

Changes in air quality and human mobility in the USA during the COVID-19 pandemic

Original

Changes in air quality and human mobility in the USA during the COVID-19 pandemic / Lozej Archer, C., Cervone, G., Golbazi, M., Al Fahel, N., Hultquist, C.. - In: BULLETIN OF ATMOSPHERIC SCIENCE AND TECHNOLOGY. - ISSN 2662-1495. - 1:3-4(2020), pp. 491-514. [10.1007/s42865-020-00019-0]

Availability:

This version is available at: 11583/3009596 since: 2026-04-03T12:33:37Z

Publisher:

Springer Nature

Published

DOI:10.1007/s42865-020-00019-0

Terms of use:

This article is made available under terms and conditions as specified in the corresponding bibliographic description in the repository

Publisher copyright

(Article begins on next page)



Changes in air quality and human mobility in the USA during the COVID-19 pandemic

Cristina L. Archer¹ · Guido Cervone² · Maryam Golbazi¹ · Nicolas Al Fahel³ · Carolyne Hultquist⁴

Received: 25 June 2020 / Accepted: 10 September 2020 / Published online: 26 October 2020
© The Author(s) 2020

Abstract

The first goal of this study is to quantify the magnitude and spatial variability of air quality changes in the USA during the COVID-19 pandemic. We focus on two pollutants that are federally regulated, nitrogen dioxide (NO₂) and fine particulate matter (PM_{2.5}). NO₂ and PM_{2.5} are both primary and secondary pollutants, meaning that they can be emitted either directly into the atmosphere or indirectly from chemical reactions of emitted precursors. NO₂ is emitted during fuel combustion by all motor vehicles and airplanes. PM_{2.5} is emitted by airplanes and, among motor vehicles, mostly by diesel vehicles, such as commercial heavy-duty diesel trucks. Both PM_{2.5} and NO₂ are also emitted by fossil-fuel power plants, although PM_{2.5} almost exclusively by coal power plants. Observed concentrations at all available ground monitoring sites (240 and 480 for NO₂ and PM_{2.5}, respectively) were compared between April 2020, the month during which the majority of US states had introduced some measure of social distancing (e.g., business and school closures, shelter-in-place, quarantine), and April of the prior 5 years, 2015–2019, as the baseline. Large, statistically significant decreases in NO₂ concentrations were found at more than 65% of the monitoring sites, with an average drop of 2 parts per billion (ppb) when compared to the mean of the previous 5 years. The same patterns are confirmed by satellite-derived NO₂ column totals from NASA OMI, which showed an average drop in 2020 by 13% over the entire country when compared to the mean of the previous 5 years. PM_{2.5} concentrations from the ground monitoring sites, however, were not significantly lower in 2020 than those in the past 5 years and were more likely to be higher than lower in April 2020 when compared with those in the previous 5 years. After correcting for the decreasing multi-annual concentration trends, the net effect of COVID-19 at the ground stations in April 2020 was a reduction in NO₂ concentrations by −1.3 ppb and a slight increase in PM_{2.5} concentrations by +0.28 μg/m³. The second goal of this study is to explain the different responses of these two pollutants, i.e., NO₂ was significantly reduced but PM_{2.5} was nearly unaffected, during the COVID-19 pandemic. The hypothesis put forward is that the shelter-in-place measures affected people's driving patterns most dramatically, thus passenger vehicle NO₂ emissions were reduced. Commercial vehicles (generally diesel) and electricity demand for

✉ Cristina L. Archer
carcher@udel.edu

all purposes remained relatively unchanged, thus $PM_{2.5}$ concentrations did not drop significantly. To establish a correlation between the observed NO_2 changes and the extent to which people were actually sheltering in place, thus driving less, we used a mobility index, which was produced and made public by Descartes Labs. This mobility index aggregates cell phone usage at the county level to capture changes in human movement over time. We found a strong correlation between the observed decreases in NO_2 concentrations and decreases in human mobility, with over 4 ppb decreases in the monthly average where mobility was reduced to near 0 and around 1 ppb decrease where mobility was reduced to 20% of normal or less. By contrast, no discernible pattern was detected between mobility and $PM_{2.5}$ concentrations changes, suggesting that decreases in personal-vehicle traffic alone may not be effective at reducing $PM_{2.5}$ pollution.

Keywords COVID19 · Air pollution · Nitrogen dioxide · Particulate matter · Mobility · Social distancing · Pandemic

1 Introduction

The World Health Organization (WHO) estimates that about 91% of the world population is exposed to poor air quality and that 4.2 million people die each year from causes directly attributed to air pollution (World Health Organization (WHO) 2020b). Nitrogen dioxide (NO_2) is one of a group of highly reactive gases known as nitrogen oxides (NO_x). NO_2 can irritate the human respiratory system and is also harmful to ecosystems by the formation of nitric acid and acid rain (U.S. Environmental Protection Agency (EPA) 2020a; Lin and McElroy 2011). NO_2 is also a precursor to tropospheric ozone (O_3) formation, which has further negative impacts on human health (EPA 2020b). $PM_{2.5}$ is another harmful air pollutant that consists of microscopic particles with a diameter smaller than 2.5 μm . These particles can pose a great risk to human health because they can penetrate into human lungs and even the bloodstream; $PM_{2.5}$ is also often associated with poor visibility (EPA 2020c). NO_2 and $PM_{2.5}$ are both primary (i.e., they can be directly emitted into the atmosphere) and secondary (i.e., they can also form after chemical reactions in the atmosphere) pollutants. High concentrations of both are not necessarily found where their emissions are highest, due to processes such as chemical reactions, transport, or diffusion. NO_2 and $PM_{2.5}$ are the main focus of this paper because they are among the seven “criteria” pollutants that are regulated at the federal level by the EPA via the National Ambient Air Quality Standards (NAAQS).

The novel coronavirus disease (COVID-19 hereafter) was first identified in Wuhan, China, on December 30, 2019 (WHO 2020a; Chan et al. 2020). Cases started to spread initially in China but quickly expanded to other countries across the world. COVID-19 was declared a global pandemic on March 11, 2020 (WHO Regional Office for Europe 2020). At the time of this study, over 36 million people have been affected by the virus, with over 1 million deaths in 214 countries and territories (Worldometers.info 2020; Johns Hopkins University 2020). COVID-19 first reached the USA in January 2020 and since then it has caused over 212,000 deaths (Center for Disease Control and Prevention (CDC) 2020; Johns Hopkins University 2020). The death rate of COVID-19 is significantly higher among people with cardiovascular and respiratory illnesses (Mullen 2020), which is also strongly connected with air pollution (Isaifan 2020). Furthermore, new studies suggest that higher concentrations of air pollutants result in a higher risk of COVID-19 infection (Yongjian et al. 2020) and mortality

(see Conticini et al. (2020) and pre-print by Wu et al. (2020)). Conticini et al. (2020) provided evidence that the high level of pollution in Northern Italy, especially the Lombardia and Emilia Romagna regions, was an additional co-factor to explain the high level of lethality recorded in that area. After adjusting for 20 potential confounding factors, such as population size, age distribution, and population density, Wu et al. (2020) found, with strong statistical confidence, that “a small increase in long-term exposure to PM_{2.5} leads to a large increase in the COVID-19 death rate.” By contrast, Contini and Costabile (2020) caution that the exposure to air pollution alone could not explain the spread and mortality of COVID-19. Citing the high mortality rates in northern Italy, Spain, the USA, and the UK, which are characterized by very different pollution levels, and the lack of significant outbreaks in very highly populated and polluted cities in India, they suggest that several other factors are potentially involved in the spread of COVID-19 and its mortality, such as population density, social habits, the restrictive measures applied, meteorological conditions, and the different strategies used for counting deaths related to COVID-19 and infected people. Clearly, the link between air pollution and spread or mortality of COVID-19 is still under debate.

In the USA, social distancing measures were implemented state by state with the goal of limiting the spread of the pandemic. In general, closure or non-physical interaction options (e.g., delivery only) were implemented for schools, restaurants, and public places of gathering. Businesses, workers, and types of activities that were deemed essential during the pandemic either continued operating under strict protection measures (e.g., personal protective equipment (PPE), masks) or switched to online. Non-essential businesses requiring physical presence and interaction closed completely (e.g., hair salons, bars, gyms). The extent of social distancing measures, seriousness of the implementation, and the degree of compliance varied throughout the USA. Most states announced some level of social distancing orders starting in mid-March 2020 (British Broadcasting Corporation (BBC) 2020), often including a mandatory quarantine for people diagnosed with or showing likely COVID-19 symptoms. By the beginning of April, almost all states had a mandatory shelter-in-place or lockdown order (Mervosh et al. 2020). Hereafter, lockdown and shelter-in-place will be used interchangeably. The social distancing measures have led to drastic changes in mobility and energy use and therefore changes in emissions of pollutants.

Globally, the COVID-19 outbreak is forcing large changes in economic activities (Worden et al. 2020). In China, following the strict social distancing measures, transportation decreased noticeably and, as a result, China experienced a drastic decrease in atmospheric pollution, specifically CO (Worden et al. 2020), NO₂, and PM_{2.5} (Zambrano-Monserrate et al. 2020; Worden et al. 2020; National Aeronautics and Space Administration (NASA) 2020) concentrations in major urban areas. However, emissions from residential heating and industry remained steady or slightly declined (Chen et al. 2020). Using satellite data, Zhang et al. (2020) and the National Center for Atmospheric Research (Worden et al. 2020) reported a 70% and 50% decrease in NO_x concentrations in Eastern China, respectively. Bao and Zhang (2020) showed an average of 7.8% decrease in the Air Quality Index over 44 cities in northern China. Bauwens et al. (2020) and Shi and Bresseur (2020) reported an increase in O₃ concentrations in the same region. Chen et al. (2020), reported that NO₂ and PM_{2.5} concentrations were decreased by 12.9 and 18.9 µg/m³, respectively. They estimated that this improvement in the air quality of China avoided over 10,000 NO₂- and PM_{2.5}-related deaths during the pandemic, which could potentially outnumber the confirmed deaths related to COVID-19 in China (Chen et al. 2020). Other researchers also have proposed that the improvements of air quality during the pandemic might have saved more lives than the COVID-19 has taken (Dutheil et al. 2020; Burke 2020). Likewise, Isaifan

(2020) argues that the shutting down of industrial and anthropogenic activities caused by COVID-19 in China may have saved more lives by preventing air pollution than by preventing infection.

European countries, such as France and Italy, experienced a sharp reduction in their air pollution amid COVID-19 (European Space Agency (ESA) 2020). In Brazil, a significant decrease in CO concentrations and, to a lesser extent, in NO_x levels was observed, while ozone levels were higher due to a decrease in NO_x concentrations in VOC-limited locations (Dantas et al. 2020; Nakada and Urban 2020). The same findings were observed in Kazakhstan and Spain, respectively (Kerimray et al. 2020; Tobías et al. 2020). Likewise, Iran (Nemati et al. 2020) and India (Mahato et al. 2020; Sharma et al. 2020) reported noticeable improvements in air pollution during the pandemic. Le Quéré et al. (2020) looked into the impacts of the forced confinement on CO₂ emissions and concluded that global CO₂ emissions decreased by 17% by early April compared with the average level in 2019. They predict that the yearly mean CO₂ emissions would decrease by 7% if restrictions remain until the end of 2020.

In the USA, as a result of social distancing, states started to experience a dramatic decrease in personal transportation and mobility in general (Gao et al. 2020). Personal vehicle transportation decreased by approximately 46% on average nationwide, while freight movement only decreased by approximately 13% (Pishue 2020). Air traffic decreased significantly as well (Slotnick 2020). On-road vehicle transportation is a major source of NO_x emissions (EPA 2017) while airports are usually hot spots for NO₂ pollution (NASA 2020).

The Houston Advanced Research Center (HARC) (Beydoun et al. 2020) analyzed the daily averages of hourly aggregated concentrations of benzene, toluene, ethylbenzene, and xylenes (BTEX) across six stations in Houston, USA. They reported a decrease in BTEX levels in the atmosphere while there was an intensified formation on PM_{2.5} in the region. Similarly, the New York Times reported huge declines in pollution over major metropolitan areas, including Los Angeles, Seattle, New York, Chicago, and Atlanta using satellite data (Plumer and Popovich 2020).

While a noticeable number of studies have looked into the correlation between lockdown measures amid COVID-19 and air quality in different countries, none has evaluated air quality for the entire USA. The goals of this study are to investigate the magnitude and spatial variability of air quality (NO₂ and PM_{2.5}) changes in the USA during the COVID-19 pandemic and to understand the relationships between mobility and NO₂ changes. An innovative aspect of this study is that we use an extensive database of ground monitoring stations for NO₂ and PM_{2.5} (Section 2.1) and a third-party high-resolution mobility dataset derived from cellular device movement (Section 2.3). In addition, we included satellite-retrieved NO₂ information to increase the spatial data coverage (Section 2.2). Whereas most studies rely only on a comparison to 2019, we consider five prior years (2015–2019) to provide a more robust measure of changes in pollution level across the country amid the COVID-19 pandemic.

2 Data

2.1 Air quality data

Criteria pollutant concentration data, originally measured and quality-checked by the various state agencies, are centrally collected and made available to the public by the EPA through their online Air Quality System (AQS or AirData) platform (EPA Air Quality

System 2020). For NO_2 and $\text{PM}_{2.5}$, the reported concentrations are 1-h averages, thus 24 records are reported daily (if no records are missing). The AQS pre-generated files are updated twice per year: once in June, to capture the complete data for the prior year, and once in December, to capture the data for the summer. The daily files, containing daily average and daily maximum of 1-h NO_2 concentrations and 24-h average of $\text{PM}_{2.5}$ concentrations, were downloaded for the years 2015–2019. At the time of this study (May 2020), however, the pre-generated files for April 2020 were not yet available.

For the year 2020 only, the data source was the U.S. EPA AirNow program (EPA AirNow 2020), which collects real-time observations of criteria pollutants from over 2000 monitoring sites operated by more than 120 local, state, tribal, provincial, and federal agencies in the USA, Canada, and Mexico. As stated on AirNow website, “these data are not fully verified or validated and should be considered preliminary and subject to change.” Of the two types of files available from AirNow, namely AQObsHourly and Hourly, AQObsHourly files were downloaded for March and April 2020 because of their smaller file size (they are updated once per hour, as opposed to multiple times). Texas and New York do not feed NO_2 measurements to Airnow, thus their 2020 NO_2 data were downloaded directly from their state websites (Texas Commission on Environmental Quality (TCEQ) 2020; New York State Department of Environmental Conservation 2020).

The NAAQS for NO_2 and $\text{PM}_{2.5}$ are based on the comparison of a “design value,” which is a specific statistic of measured concentrations over a specific time interval, against a threshold value as follows:

- NO_2 : annual mean of 1-h concentrations may not exceed 53 parts per billion (ppb);
- NO_2 : 98th percentile of 1-h daily maximum concentrations, averaged over 3 years, may not exceed 100 ppb;
- $\text{PM}_{2.5}$: annual mean of 24-h concentrations, averaged over 3 years, may not exceed $12 \mu\text{g}/\text{m}^3$;
- $\text{PM}_{2.5}$: 98th percentile of 24-h concentrations, averaged over 3 years, may not exceed $35 \mu\text{g}/\text{m}^3$.

Clearly, it is not possible to calculate the design values as early as April because neither the annual average nor the 98th percentile can be calculated after only 4 months. As such, in this study, we will use a simple monthly average as the representative metric to compare the concentrations in April 2020 to those in the previous five Aprils.

An air quality station, whether measuring NO_2 or $\text{PM}_{2.5}$, was used in this study only if it reported both in 2020 (through AirNow) and in the five years prior (through AQS). In addition, only air quality stations that were reporting at least 75% of the time were retained. Note that not all NO_2 -measuring sites also measure $\text{PM}_{2.5}$, and vice versa. Of the 426 and 882 sites that measured NO_2 and $\text{PM}_{2.5}$, respectively, in April 2020, only 271 and 819 reported at least 75% of the time, and ultimately only 201 and 480 reported NO_2 and $\text{PM}_{2.5}$ also in April 2015–2019 for at least 75% of the time. These are the sites that we will focus on in this study and that are shown in Figs. 5 and 6.

2.2 Satellite data

Satellite observations for NO_2 were acquired using the OMI instrument flying onboard the NASA Aura satellite (Krotkov et al. 2019) and were downloaded using the NASA GIOVANNI portal (NASA 2020). Specifically, the Nitrogen Dioxide Product (OMNO2d)

was used, which is a Level-3 global, daily, gridded product at a $0.25^\circ \times 0.25^\circ$ spatial resolution provided for all pixels where cloud fraction is less than 30% (Krotkov et al. 2019). The product comes in two variants, the first measuring the concentration in the total column and the second the concentration only in the tropospheric portion of the column. For this work, the latter measurements were used. The Aura satellite is not geostationary, but polar-orbiting, which means that it orbits over a given location at about the same time each day. Therefore, changes in NO_2 column totals due to COVID-19 that occur at other times of the day may not be well captured by the OMI retrievals. Details about the NASA OMI measurements can be found in the literature (Boersma et al. 2011).

The satellite-derived NO_2 column totals at the pixels of the ground monitoring sites are well correlated with the NO_2 concentrations recorded at the ground monitoring sites in all years, with R-square values varying between 0.76 and 0.80. As an example, we show the correlation between the two in 2016 and 2020 in Fig. 1. Similar agreements between satellite-derived NO_2 and observations or modeling results have been reported in the literature (Valin et al. 2011; Russell et al. 2012). As such, we can use satellite-derived NO_2 column totals to (1) confirm the results obtained from the ground monitoring sites and (2) analyze pixels where no ground monitoring sites are available.

2.3 Mobility data

Mobility measures aim to capture general patterns of observed movement and most available data products today utilize mobile device activity as a proxy. While policy makers set social distancing guidance, there are various policies enacted and various degrees to which policies are followed throughout the country. We seek to observe actual patterns of movement by using a dataset developed by Descartes Labs (2020b) that provides an aggregated mobility measure based on anonymized and/or de-identified mobile device locations. Mobility is essentially a statistical representation of the distance a typical member of a given population moves in a day. Descartes Labs calculated the farthest distance apart recorded by smartphone devices utilizing select apps (with location reporting enabled) for at least 10 uses a day, spread out over at least 8 h in a day, with a day defined as 00:00 to 23:59 local time (Warren and Skillman 2020). The maximum distance for each qualifying device is tied to the origin county in which the anonymized user is first active each day. Aggregated results at the county level are produced as a statistical measure of general travel behavior.

Mobility data are ultimately provided as percent of normal, i.e., the ratio of aggregated mobility during each day of the COVID-19 pandemic over that of the baseline (17 February–7 March 2020). Note that the baseline period is in late winter 2020, whereas the period of focus in this paper is April 2020, in spring. As such, a fraction of the differences in mobility may be due to differences in weather and/or climate rather than to COVID-19 restrictions. We did not attempt to correct for this type of bias. Another caveat, noted by the producers of the data (Warren and Skillman 2020), is that the raw data used to calculate mobility are available for only a small fraction of the total number of devices (a few percent at most), thus the resulting mobility may or may not truly represent the average behavior in each county. Nonetheless, the effects of these sampling errors are expected to be small. The mobility data are made freely available by Descartes Labs at the US county level (Descartes Labs 2020a).

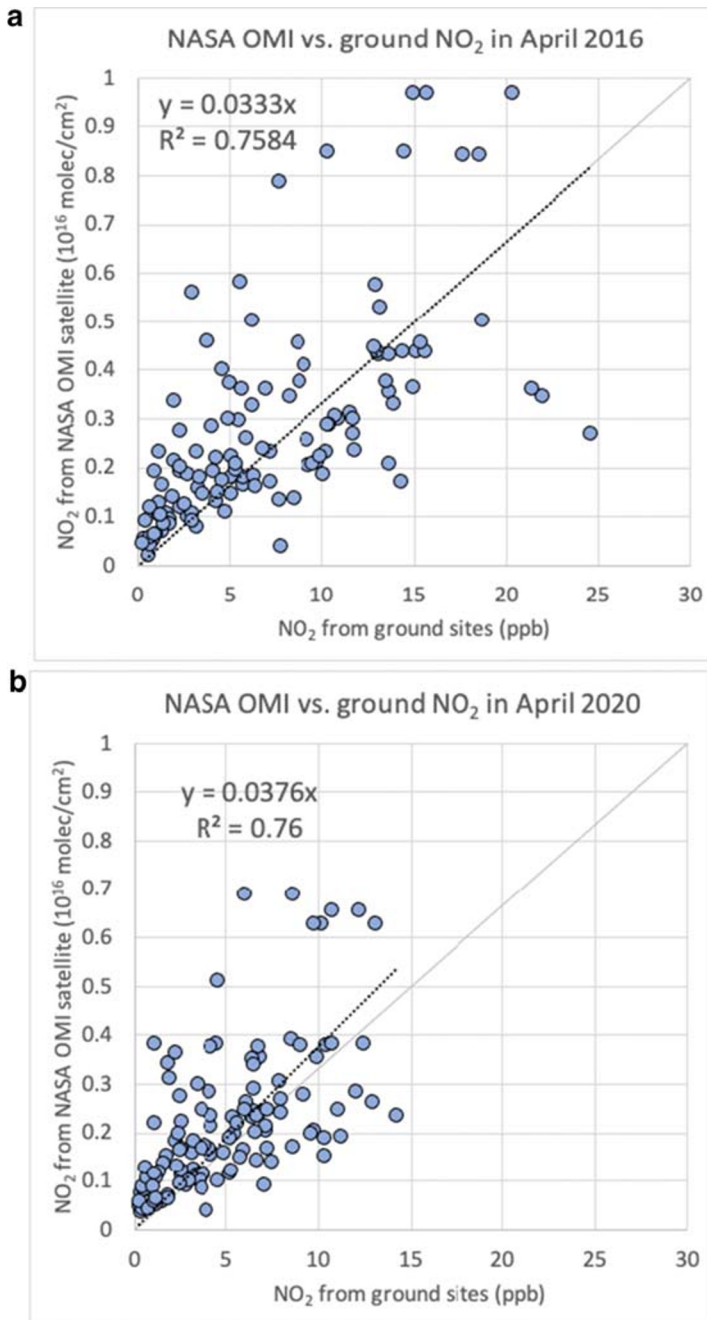


Fig. 1 Scatter plots of monthly-average NO₂ concentrations (ppb) from the ground monitoring sites versus monthly-average NO₂ column totals (10¹⁶ molecules/cm²) retrieved from the NASA OMI satellite at the pixels of the ground monitoring sites during **a** April 2016 and **b** April 2020

3 Results

3.1 Observed air quality changes

In the rest of this paper, we will compare the monthly average of the pollutant of interest—NO₂ or PM_{2.5}—during the month of April 2020 to the average of the five monthly averages during April of the years 2015 through 2019. There are two reasons for this choice. First, using five years to establish a reference is more meaningful than, say, using just the year 2019, because year-to-year variability can occur regardless of the pandemic. In fact we found that, in general, the year 2019 was relatively clean when compared to the previous five, thus a comparison between April 2020 and April 2019 may underestimate the true impact of COVID-19. Second, although the monthly average is not the design value for either NO₂ or PM_{2.5}, it is a value that is representative of the overall air quality during the entire month of April. Alternative metrics, such as the monthly maximum, are more representative of extreme circumstances, like wildfires, that are not necessarily associated with COVID-19.

Starting with NO₂, the April 2020 averages were generally below the April 2015–2019 average at the ground monitoring sites, as most sites lay below the 1:1 line in Fig. 2a. In addition, 65% of the sites were characterized by NO₂ concentrations in 2020 that were lower than those in all of the previous five years (for the month of April). Only a few sites (5 in total, < 2%) experienced NO₂ concentrations in 2020 that were higher than those in all of the previous five years (for the month of April). The average drop in NO₂ concentrations in April 2020 with respect to the average of the previous five years was –2.02 ppb (Tables 1 and 3). To verify that the observed reduction was not simply due to the multi-annual decreasing trend in emissions (Jiang et al. 2018), a trend analysis was

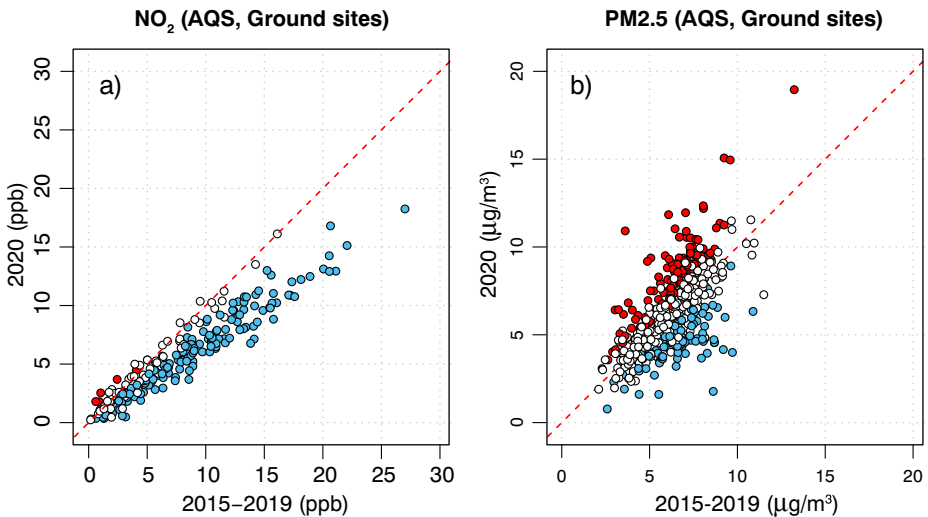


Fig. 2 Scatter plots of **a** NO₂ and **b** PM_{2.5} observed concentrations at the AQS ground monitoring sites during April of 2020 (y-axis) versus April of the previous five years 2015–2019 (x-axis). Blue-filled markers represent sites for which the values in April 2020 were lower than any in April of 2015–2019; red-filled markers represent sites for which the values in April 2020 were higher than any in April of 2015–2019

Table 1 Monthly average of NO₂ concentrations (ppb) by state in the month of April of the years 2015–2020 from the AQS sites. The last column shows the percent change in 2020 with respect to the 2015–2019 mean

State	No. sites	2015	2016	2017	2018	2019	2020	
Arizona	4	12.49	11.68	13.58	12.82	10.33	9.06	−25.6%
California	56	9.73	9.23	8.79	8.85	8.13	5.92	−33.8%
Colorado	7	11.37	9.87	9.39	9.94	9.5	8.25	−17.6%
Connecticut	3	11.71	11.13	11.72	10.34	8.43	6.54	−38.7%
District of Columbia	1	9.19	8.74	7.43	8.25	8.46	7.26	−13.7%
Florida	7	5.65	4.23	4.73	5.55	5.34	4.77	−6.5%
Georgia	2	11.39	12.15	10.83	11.62	10.8	10.83	−4.7%
Hawaii	1	3.04	2.99	4.59	3.21	3.72	2.85	−18.8%
Indiana	4	11.49	9.43	8.32	9.89	8.2	7.2	−23.9%
Iowa	1	1.42	2.33	1.66	2.08	1.9	1.69	−10.0%
Kansas	4	6.10	4.86	4.4	5.98	5.16	4.47	−15.6%
Kentucky	1	13.94	14.95	13.08	13.18	17.43	11.25	−22.5%
Maine	2	4.30	3.67	3.99	4.03	3.39	2.83	−27.0%
Maryland	5	10.43	10	8.57	8.84	8.11	6.74	−26.7%
Massachusetts	8	9.47	9.08	7.15	8.45	6.47	5.15	−36.6%
Michigan	2	9.37	8.28	8.37	8.59	7.39	6.79	−19.2%
Minnesota	2	7.51	5.95	7.25	9.88	6.53	5.08	−31.6%
Mississippi	1	3.91	4.25	4.28	3.85	3.79	2.68	−33.3%
Missouri	6	10.81	9.17	8.82	8.62	8.64	6.92	−24.9%
Montana	1	0.54	0.61	0.9	0.68	0.46	0.36	−43.5%
Nevada	2	8.48	7.93	9.77	10.09	8.53	6.76	−24.5%
New Jersey	8	13.80	13.39	12.33	12.48	12.38	8.03	−37.6%
New Mexico	8	4.68	4.56	4.48	4.74	5.22	3.58	−24.4%
New York	5	13.64	12.56	12.05	12.42	11.3	7.55	−39.1%
North Carolina	3	6.04	6.29	6.05	6.11	6.58	4.4	−29.1%
North Dakota	6	2.91	1.98	2.44	2.59	2.16	1.95	−19.3%
Ohio	5	14.60	12.13	10.84	11.17	11.28	8.25	−31.3%
Oklahoma	3	8.89	8.43	7.02	7.38	7.38	6.02	−23.0%
Oregon	2	12.39	11.59	10.69	9.42	9.98	7.77	−28.2%
Pennsylvania	1	12.87	12.89	11.74	10.81	8.7	10.39	−8.9%
Rhode Island	2	14.03	13.5	10.23	13.37	10.15	8.47	−30.9%
South Carolina	2	5.59	6.03	6.73	6.62	5.84	4.92	−20.2%
Texas	40	5.80	6.23	5.23	6.41	5.95	5.26	−11.2%
Utah	7	3.42	2.95	4.5	4.15	2.92	2.32	−35.3%
Vermont	2	7.32	6.12	6.23	6.16	5.74	4.00	−36.7%
Virginia	9	5.77	5.05	4.92	5.25	5.42	4.04	−23.5%
Washington	2	16.80	18.17	14.25	13.32	11.36	9.52	−35.6%
Wisconsin	2	12.50	11.11	9.61	11.36	9.75	8.63	−20.6%
Wyoming	13	1.69	1.62	1.61	1.55	1.31	1.33	−14.5%

performed. The average slope of the linear fit was negative (-0.24 ppb/year) and, after de-trending, the net contribution of COVID-19 was approximately -1.3 ppb on average.

The same pattern is confirmed in the satellite-derived data. Out of the 227 pixels with ground monitoring sites, a total of 127 (56%) exhibited lower NO_2 in 2020 than in the previous five years and only 5% higher (Fig. 3b). Once all 14,706 pixels with valid satellite retrievals over the continental US are considered, a similar pattern of lower NO_2 column totals in 2020 than in the five previous years emerges from these data too (Fig. 3a), but with

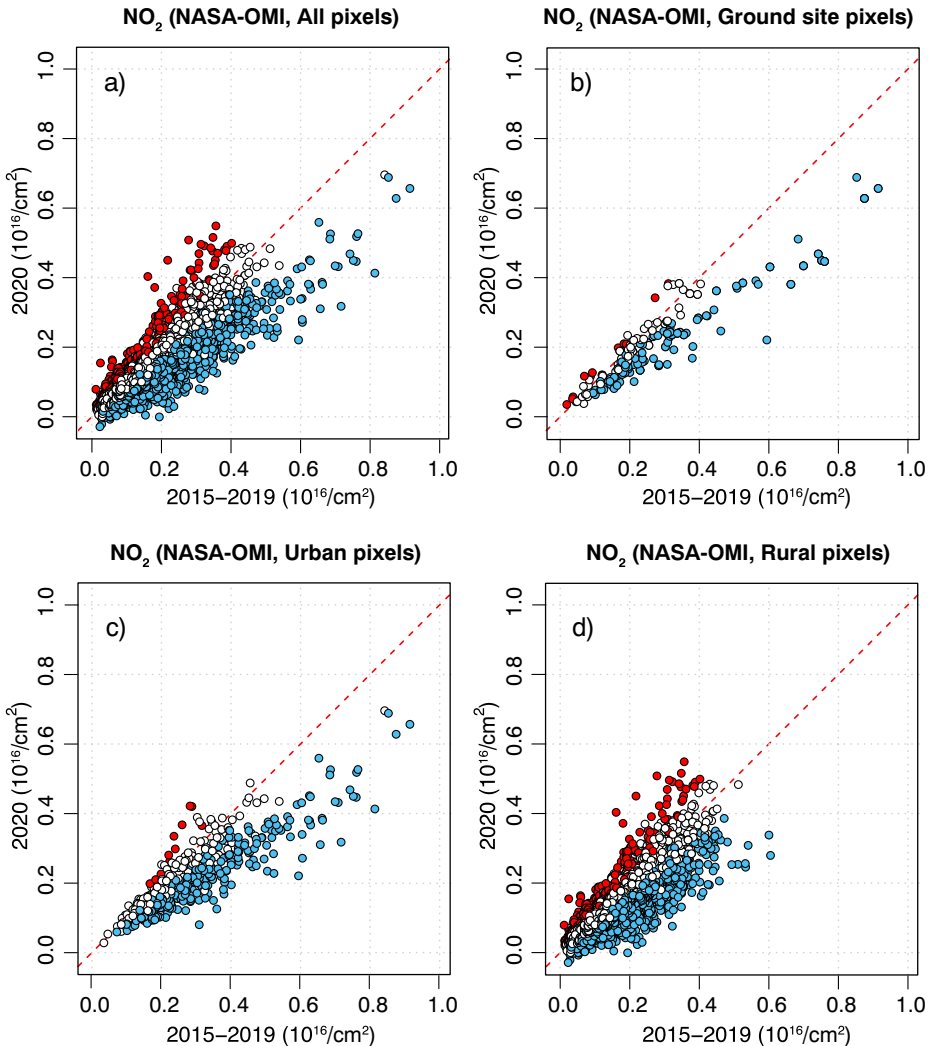


Fig. 3 Scatter plots of NO_2 column totals from NASA-OMI satellite at **a** all pixels over the continental US (CONUS), **b** at the pixels of the AQS ground stations, **c** at the urban pixels over CONUS, and **d** at the rural pixels over CONUS, during April of 2020 (y-axis) versus April of the previous five years 2015–2019 (x-axis). Blue-filled markers represent sites for which the values in April 2020 were lower than any in April of 2015–2019; red-filled markers represent sites for which the values in April 2020 were higher than any in April of 2015–2019

28% of the pixels lower in 2020 than in the previous five years and 5% higher (for the month of April, Table 3).

Further insight was gained from the satellite-derived NO_2 column totals by differentiating the pixels into two categories: urban versus rural (Socioeconomic Data and Applications Center (SEDAC) 2020). The urban pixels are shown in Fig. 4. For urban pixels, the findings closely resemble those from the AQS ground monitoring sites, with less than 2% of the sites (11 out of 786) experiencing higher NO_2 in April 2020 than in the previous five years and over 40% of the sites (325 out of 786) experiencing the opposite (Fig. 3c). This is not surprising, as ground monitoring sites are more likely to be placed in urban locations, where most people live. Basically all the pixels with higher NO_2 in April 2020 than in the previous five years from Fig. 3a were rural pixels (Fig. 3d).

In terms of spatial variability, Fig. 5 shows that, although NO_2 reductions were recorded all over the country, the highest decreases were observed in California and the Northeast, where the shelter-in-place measures started earlier (March 11 for California, the earliest in the country, and March 22 for New York, third earliest (Mervosh et al. 2020)) and lasted longer (both states still have major restrictions in place as of June 10, 2020 (The Washington Post 2020)). Noticeable exceptions were North Dakota and Wyoming, where either no significant decreases or actual small increases in NO_2 concentrations were observed. North Dakota enforced no shelter-in-place measures and in Wyoming only the city of Jackson implemented a stay-at-home order as of April 20, 2020 (Mervosh et al. 2020). However, as discussed in Section 2.3, people's actual mobility, as opposed to state ordinances, is a more

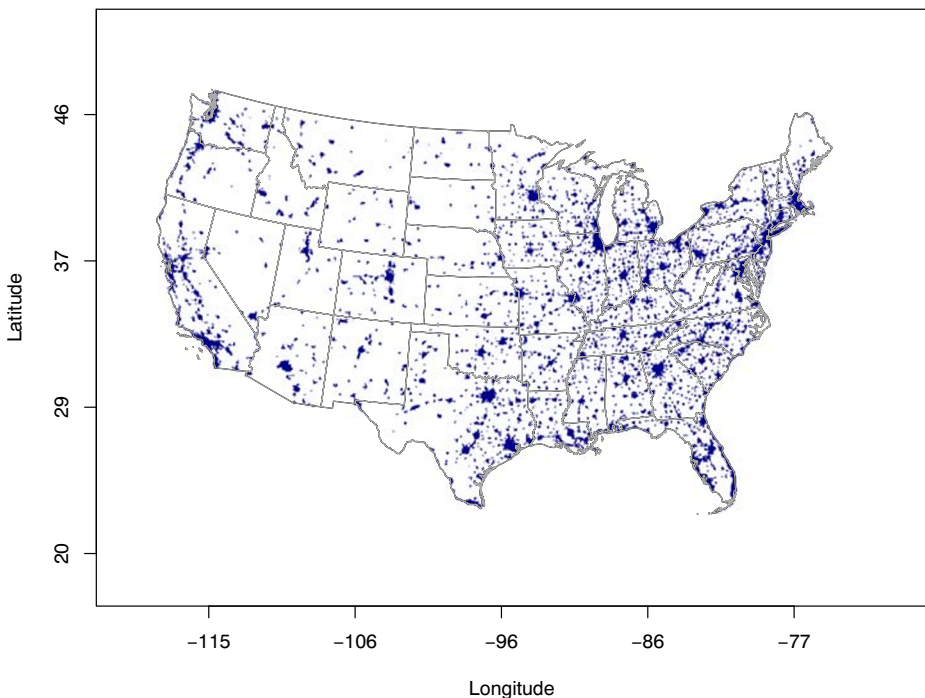


Fig. 4 Map of the urban pixels in the continental US from the Socioeconomic Data and Applications Center (SEDAC) (SEDAC 2020)

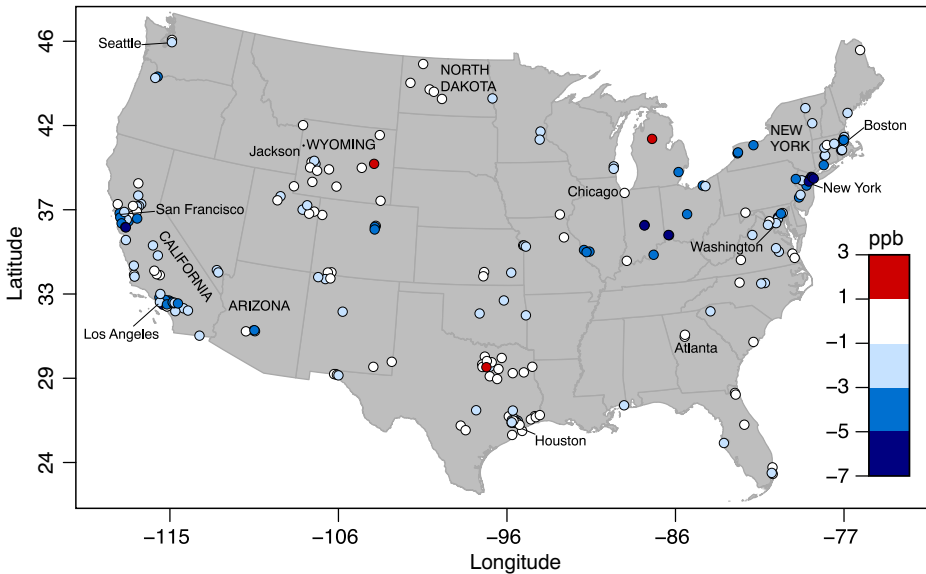


Fig. 5 Difference in monthly average NO_2 concentrations (ppb) between April 2020 and the five previous Aprils (2015–2019). Negative values (blue) indicate a decrease in NO_2 concentrations in April 2020, vice versa positive values (red) indicate an increase. Latitude and longitude are in degrees. Cities and states mentioned in the paper are labelled in lower and upper cases, respectively

appropriate metric to capture the effect of COVID-19 on air quality because there was no complete compliance with state or city restrictions.

Figure 5 was useful because it included actual NO_2 concentrations measured near the ground. However, the spatial coverage was sparse and urban areas were over-sampled compared with rural areas. This weakness is addressed via the NASA OMI satellite data, which are shown in Fig. 7 as the difference between the monthly average of NO_2 column total in 2020 and that in 2015–2019 for the month of April. The regions with low coverage of ground concentration of NO_2 and mobility in the Midwest are generally characterized by near-normal NO_2 column totals. The Northeast hotspot of low mobility is also a hotspot of low NO_2 , consistent with Bauwens et al. (2020), although it is surrounded by patches of above-normal values that were not detectable from the ground monitoring stations. The Los Angeles area is another hotspot of NO_2 decreases, as well as low mobility.

For $\text{PM}_{2.5}$, the ground monitoring stations depict a completely different response to COVID-19 (Fig. 6). Whereas most NO_2 sites were laying below the 1:1 line (Fig. 2a), the majority of $\text{PM}_{2.5}$ sites laid above it (Fig. 2b), indicating an overall increase in monthly average $\text{PM}_{2.5}$ in the country in April 2020 with respect to the previous five years. Only 18% of the sites reported concentrations of $\text{PM}_{2.5}$ that were lower in 2020 than in the previous five years (in the month of April), while 24% of the stations reported the highest levels in 2020 compared to the previous five years (for the month of April). The average increase in $\text{PM}_{2.5}$ concentrations with respect to the mean of the previous five years was small, $+0.05 \mu\text{g}/\text{m}^3$ (Tables 2 and 3). Results from the trend analysis indicated that, in the absence of COVID-19, the average concentration of $\text{PM}_{2.5}$ in April 2020 would slightly decrease (slope $-0.12 \mu\text{g}/\text{m}^3/\text{year}$). Thus, the net contribution of COVID-19 on $\text{PM}_{2.5}$ concentrations was a slight increase of about $0.28 \mu\text{g}/\text{m}^3$ on average.

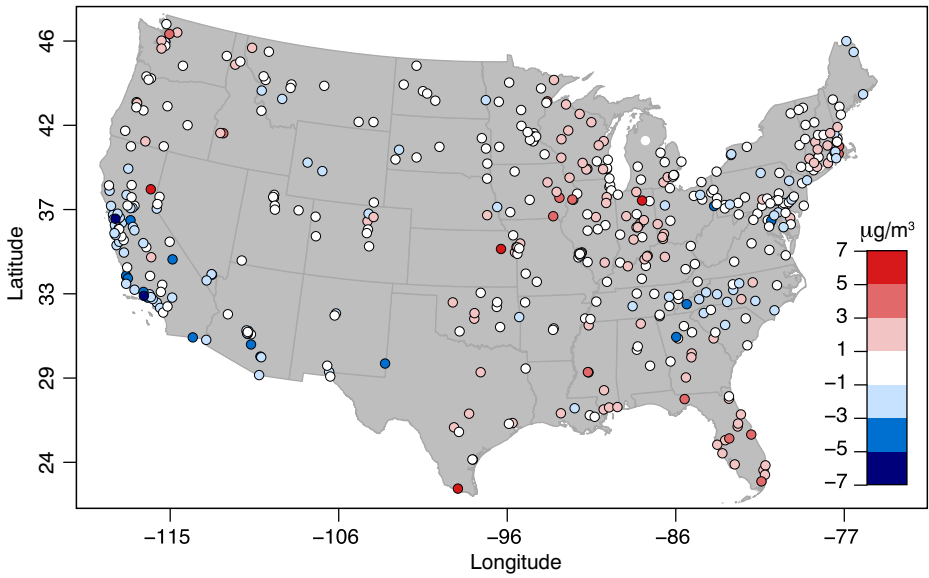


Fig. 6 Difference in monthly-average $PM_{2.5}$ concentrations ($\mu g/m^3$) between April 2020 and the five previous Aprils (2015–2019). Negative values (blue) indicate a decrease in $PM_{2.5}$ concentrations in April 2020, vice versa positive values (red) indicate an increase. Latitude and longitude are in degrees

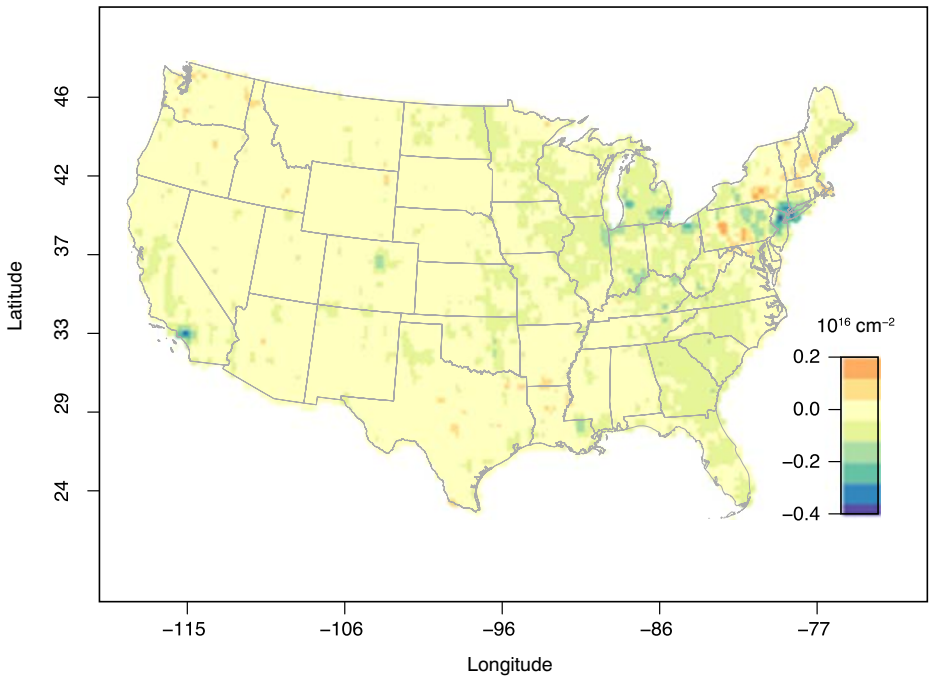


Fig. 7 Difference between the NASA OMI NO_2 monthly average column totals (10^{16} molecules/ cm^2) in 2020 and in 2015–2019 for the month of April. The “hotspot” of reduced NO_2 in the Northeast is apparent. Latitude and longitude are in degrees

Table 2 Monthly average of PM_{2.5} concentrations ($\mu\text{g}/\text{m}^3$) by state in the month of April of the years 2015–2020 from the AQS sites. The last column shows the percent change in 2020 with respect to the 2015/2019 mean

State	No. sites	2015	2016	2017	2018	2019	2020	
Alabama	4	7.94	7.56	8.82	7.26	7.64	8.59	+9.5%
Alaska	4	3.45	3.57	4.36	3.43	4.45	3.83	−0.6%
Arizona	13	5.67	5.82	6.9	8.13	5.03	4.75	−24.7%
Arkansas	4	7.01	7.12	8.12	6.98	7.51	7.54	+2.6%
California	61	7.06	6.65	6.35	7.93	6.31	5.26	−23.3%
Colorado	8	5.31	3.65	4.63	5.87	5.26	5.21	+5.4%
Connecticut	8	4.8	5.54	3.81	5.61	5.32	5.75	+14.6%
Delaware	3	5.73	5.65	6.21	6.48	5.91	7.09	+18.2%
District Of Columbia	1	6.21	6.68	7.11	8	6.33	4.67	−32.0%
Florida	16	7.01	7	7.41	7.68	6.39	9.52	+34.1%
Georgia	10	7.87	8.31	8.52	8.25	8.83	8.44	+1.0%
Hawaii	7	5.96	4.72	6.68	4.26	3.2	3.32	−33.1%
Idaho	5	4.47	5.51	4.21	4.43	3.55	5.72	+29.0%
Illinois	14	8.23	7.67	7.06	8.03	7.43	8.11	+5.5%
Indiana	15	7.5	8.21	6.17	6.64	6.21	8.47	+21.9%
Iowa	9	7.78	6.97	6.18	7.09	5.65	8.71	+29.3%
Kansas	3	6.34	6.21	6.85	8.31	8.77	11.47	+57.2%
Kentucky	12	6.97	7.03	6.27	6.48	6.77	8.04	+19.9%
Louisiana	4	7.81	7.06	8.43	7.52	6.84	7.74	+2.8%
Maine	6	5.16	5.64	4.93	4.46	3.63	4.05	−15.0%
Maryland	10	6.93	6.75	5.74	6.46	4.33	4.81	−20.4%
Massachusetts	9	4.67	5.08	3.02	5.6	4.68	5.71	+23.9%
Michigan	11	6.7	6.7	5.52	6.48	6.33	7.1	+11.9%
Minnesota	18	5.09	5.66	5.06	6.22	4.88	5.73	+6.5%
Mississippi	7	7.98	7.49	8.32	8.27	6.97	10.15	+30.0%
Missouri	13	7.65	6.3	6.46	7.33	7.33	6.6	−5.9%
Montana	11	5.02	4.57	4.07	4.81	3.7	4.21	−5.1%
Nebraska	2	8.02	6.65	9.82	9.77	6.1	8.17	+1.2%
Nevada	6	6.16	4.81	4.57	5.25	3.23	4.11	−14.4%
New Hampshire	5	4.3	4.2	3.18	4.11	3.34	4.01	+4.8%
New Jersey	3	5.69	7.27	7.32	7.17	6.09	5.84	−12.9%
New Mexico	5	7.34	5.05	7.02	7.93	5.58	4.87	−26.0%
New York	7	5.32	4.99	4.38	4.93	4.92	4.5	−8.3%
North Carolina	13	6.78	7.25	7.16	6.53	6.4	5.41	−20.7%
North Dakota	6	4.65	3.24	4.33	5.26	3.58	4.2	−0.3%
Ohio	12	7.49	7.86	5.55	6.82	6.68	6.99	+1.6%
Oklahoma	9	7.32	7.31	7.52	8.78	7.71	8.19	+6.0%
Oregon	12	5.3	4.94	4.28	5.14	4.24	5.17	+8.2%
Pennsylvania	24	7.41	7.01	7.64	6.99	6.52	6.97	−2.0%
Rhode Island	5	4.84	5.2	4.56	6.01	3.3	4.08	−14.7%

Table 2 (continued)

State	No. sites	2015	2016	2017	2018	2019	2020	
South Carolina	6	7.33	6.95	7.95	6.64	6.6	6.62	−6.7%
South Dakota	8	6.65	4.93	5.35	5.54	3.68	5.01	−4.2%
Tennessee	11	6.41	6.68	6.8	6.45	6.5	6.23	−5.1%
Texas	11	10.04	8.84	9.13	8.79	8.76	10.27	+12.7%
Utah	7	5.6	3.3	3.47	4.59	3.03	3.79	−5.2%
Vermont	4	4.32	4.24	3.27	4.69	4.48	4.73	+12.6%
Virginia	6	5.74	5.76	6.33	5.31	5.75	5.66	−2.0%
Washington	11	5.57	6.5	3.53	4.01	4.17	5.11	+7.4%
Wisconsin	18	5.45	7.47	4.58	5.46	6.68	7.49	+26.3%
Wyoming	3	4.04	2.75	2.73	3.3	2.57	1.73	−43.8%

In summary, we report a large decrease (−2.02 ppb, or 27%) in monthly average NO₂ concentrations across the US ground monitoring stations, confirmed by the satellite-derived NO₂ column total decrease of 7.1×10^{14} molecules/cm² (or 24%) at the pixels of the ground monitoring stations, during April of 2020 when compared with April of the previous five years. When all the pixels with valid data were included, a drop of 2.4×10^{14} molecules/cm² (or 13%) during April of 2020 was observed when compared to April of the previous five years (Table 3). After de-trending, the net effect of COVID-19 on NO₂ concentrations at the AQS ground monitoring stations was −1.3 ppb. The monthly average of PM_{2.5}, however, increased slightly on average (+0.05 μg/m³ when compared with the previous 5-year average) during the same period (Table 3). After de-trending, the effect of COVID-19 was a net increase of PM_{2.5} concentrations at the AQS ground monitoring stations by +0.28 μg/m³. In the next Section 3.3, we try to explain the reasons for these differences.

3.2 Observed mobility changes

Time series of mobility data at the counties with NO₂ ground monitoring sites are shown in Fig. 8a and at the counties with PM_{2.5} ground monitoring sites in Fig. 8b. Only a few counties had both types of monitoring sites, thus the counties included in the two figures are generally different. Yet, the patterns are very similar. First of all, mobility on average

Table 3 Average air quality measurements in April of the years 2015–2020 from NASA OMI and ground monitoring stations

	2015	2016	2017	2018	2019	2020
NASA OMI						
NO ₂ at all pixels (10 ¹⁶ molecules/cm ²)	0.16	0.15	0.14	0.13	0.14	0.12
NO ₂ at ground sites (10 ¹⁶ molecules/cm ²)	0.32	0.31	0.28	0.29	0.29	0.23
Ground monitoring stations						
NO ₂ (ppb)	8.16	7.69	7.22	7.62	7.0	5.52
PM _{2.5} (μg/m ³)	6.52	6.36	6.02	6.60	5.82	6.31

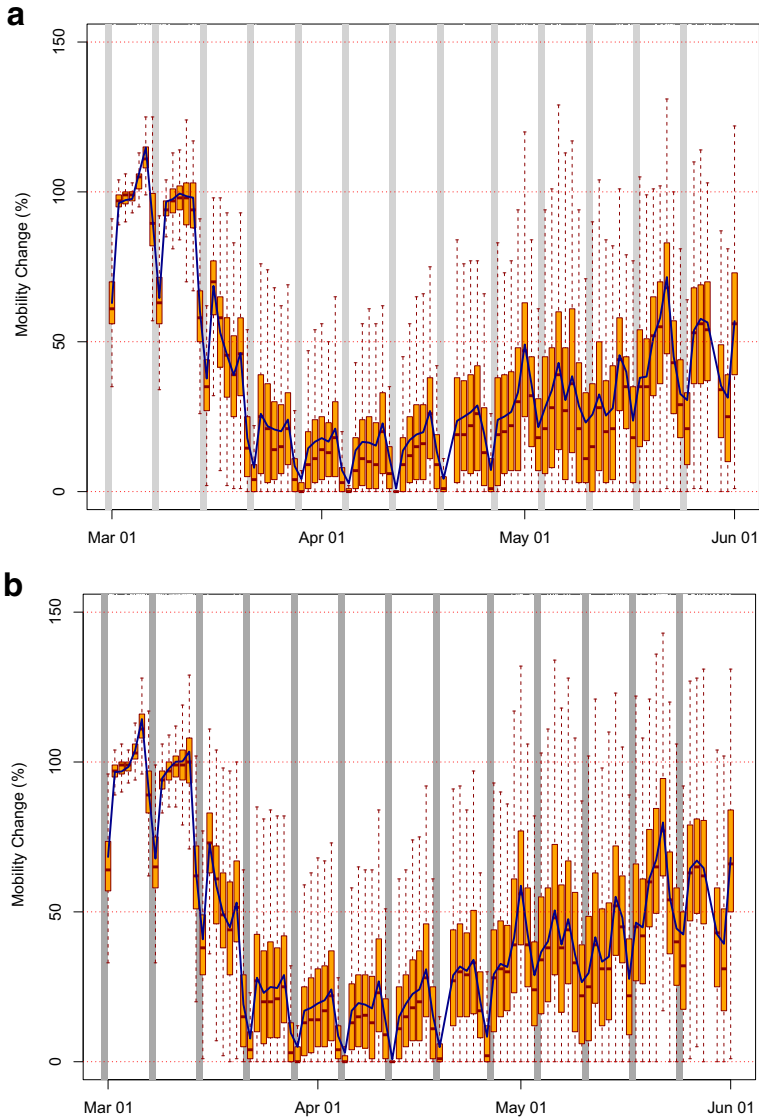


Fig. 8 Mobility, expressed as percent of normal, at the locations of the AQS ground stations monitoring **a** NO₂ and **b** PM_{2.5} during March–May 2020. The orange bars indicate first and third quartiles; the red-dashed lines cover the 5th to the 95th percentiles; the median is thick red solid; and the average of all the stations is shown with a blue line

dramatically dropped starting in the second half of March, reaching values around 20% by April, and then started to recover in May, as some states reopened for business or relaxed the shelter-in-place measures (The Washington Post 2020). Second, a distinct minimum in mobility during the month of April is clearly visible, which confirms that this month was the most relevant for air quality impacts from COVID-19. There is some variability around this general behavior, but nonetheless only a few counties barely reached normal mobility in

April. Lastly, the typical traffic reduction during the weekends is confirmed in the mobility data, regardless of the pandemic. This adds confidence to the use of mobility data as a proxy for people's actual behaviors.

In terms of spatial variability, changes in mobility during COVID-19 in the USA were not uniform, although in general mobility was reduced in most states (Fig. 9a). Note the lack of data in many counties in the Midwest (in grey in Fig. 9b), possibly due to low population density, limited smartphone usage and cellular coverage. However, the ground monitoring stations of both NO₂ and PM_{2.5} are generally located in counties with mobility data availability. In general, the strongest decreases in mobility are found around large urban areas throughout the country, e.g., the Northeast corridor from Washington D.C. to Boston; the San Francisco and Los Angeles areas in California; Seattle in the Northwest; and Chicago. A few isolated counties experienced increases in mobility (in red in Fig. 9a). Wyoming stands out as one of the few states with no significant decreases in mobility, consistent with the lack of shelter-in-place measures (Mervosh et al. 2020).

3.3 Relationships between air quality and mobility changes

To better interpret the relationship between mobility and the air pollutant of interest, either NO₂ or PM_{2.5}, the mobility data were divided into bins, based on the monthly average (in April 2020) of the mobility in the county where each ground monitoring site was located. For most cases, there was only one ground monitoring site per county. But in some cases, such as Los Angeles county in California for NO₂ or Maricopa county in Arizona for PM_{2.5}, multiple monitoring sites were located in the same county and therefore they were all paired to the same mobility value. The change in monthly average concentration of the pollutant between April 2020 and the five previous Aprils was then calculated for each mobility bin.

Starting with NO₂, there is a clear relationship with mobility (Fig. 10a). Large and negative changes in NO₂ concentrations, on the order of -4 ppb, were found at locations where mobility was basically halted, i.e., where it was less than 1% of normal in April 2020, as in full lockdown. As mobility increased, the NO₂ benefits decreased, although not linearly. For example, decreases by 2–3 ppb in NO₂ concentrations occurred where mobility was restricted but not to a full lockdown (i.e., between 1 and 20% of normal). Past 20%, the changes in NO₂ concentrations were still negative and significant, but not large, less than 1 ppb on average. This suggests that NO₂ responds modestly to changes in mobility that are not large, but then, if mobility is reduced dramatically (i.e., by at least 80%, thus it is down to 20% of normal), large decreases in NO₂ can occur.

With respect to PM_{2.5}, there is no obvious relationship between the reductions in mobility and the observed concentrations (Fig. 10b). Only for the most extreme mobility reductions, i.e., the bin with <1% mobility, which indicates that the entire population was sheltering at home for the entire month of April, PM_{2.5} concentrations decreased by about 1 $\mu\text{g}/\text{m}^3$. After the first bin, as mobility increased, both increasing and decreasing concentrations of PM_{2.5} were found, with large standard deviations and no discernible pattern. We conclude that the changes in PM_{2.5} were not directly caused by changes in people's mobility.

How can we reconcile the clear relationship of NO₂ with mobility with the lack thereof for PM_{2.5}? The hypothesis we put forward is that the shelter-in-place measures mostly affected people's driving patterns, thus passenger vehicle—mostly fueled by gasoline—emissions were reduced and so were the resulting concentrations of NO₂. Commercial vehicles (generally diesel) and electricity demand for all purposes (often provided by coal-burning power plants), however, remained relatively unchanged; thus, PM_{2.5} concentrations did not drop significantly and did not correlate with the mobility index.

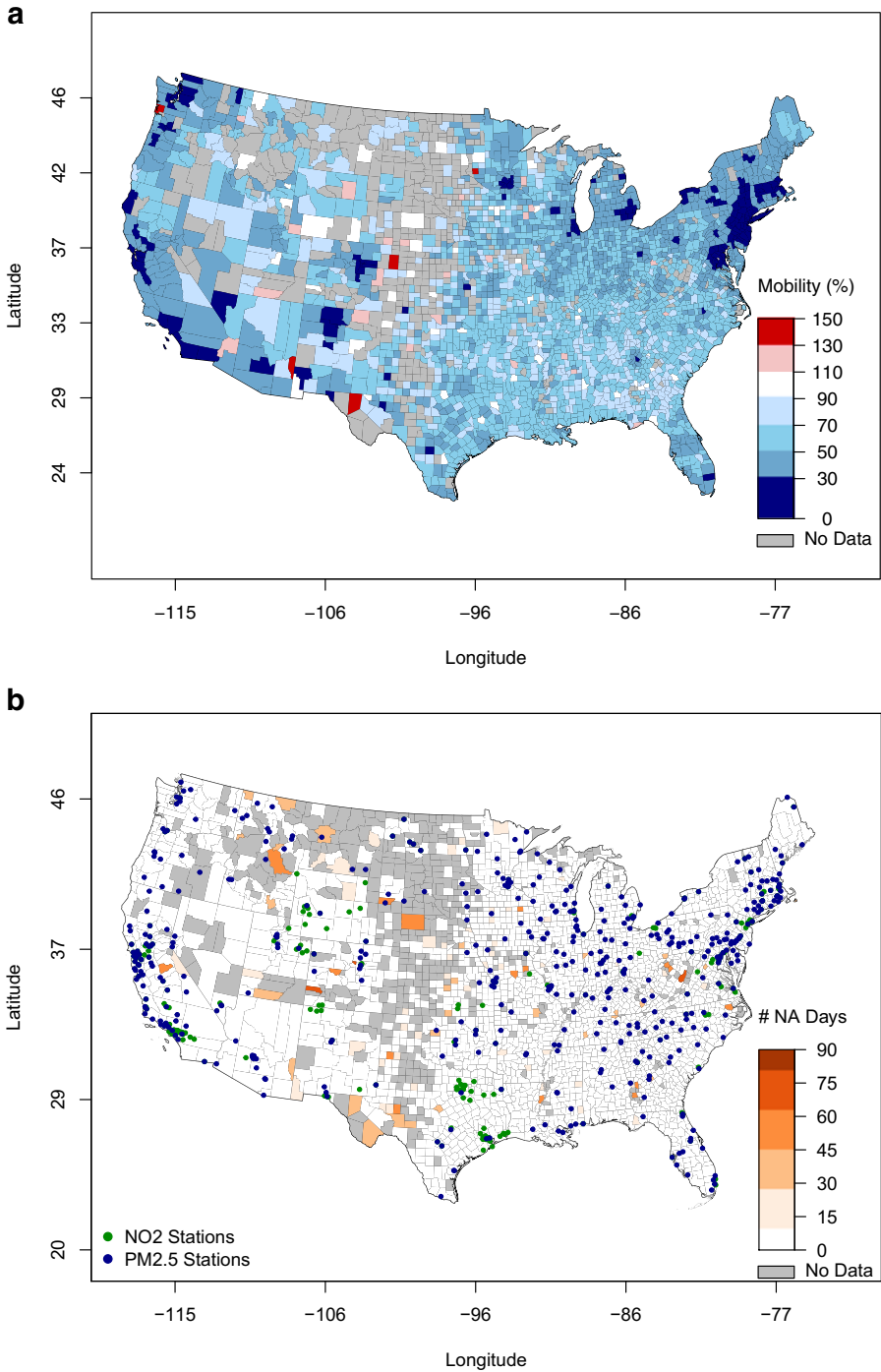


Fig. 9 Spatial distribution of **a** mobility, expressed as percent of normal, in April 2020 and **b** mobility data availability, expressed as number of missing days, during March–May 2020. Latitude and longitude are in degrees

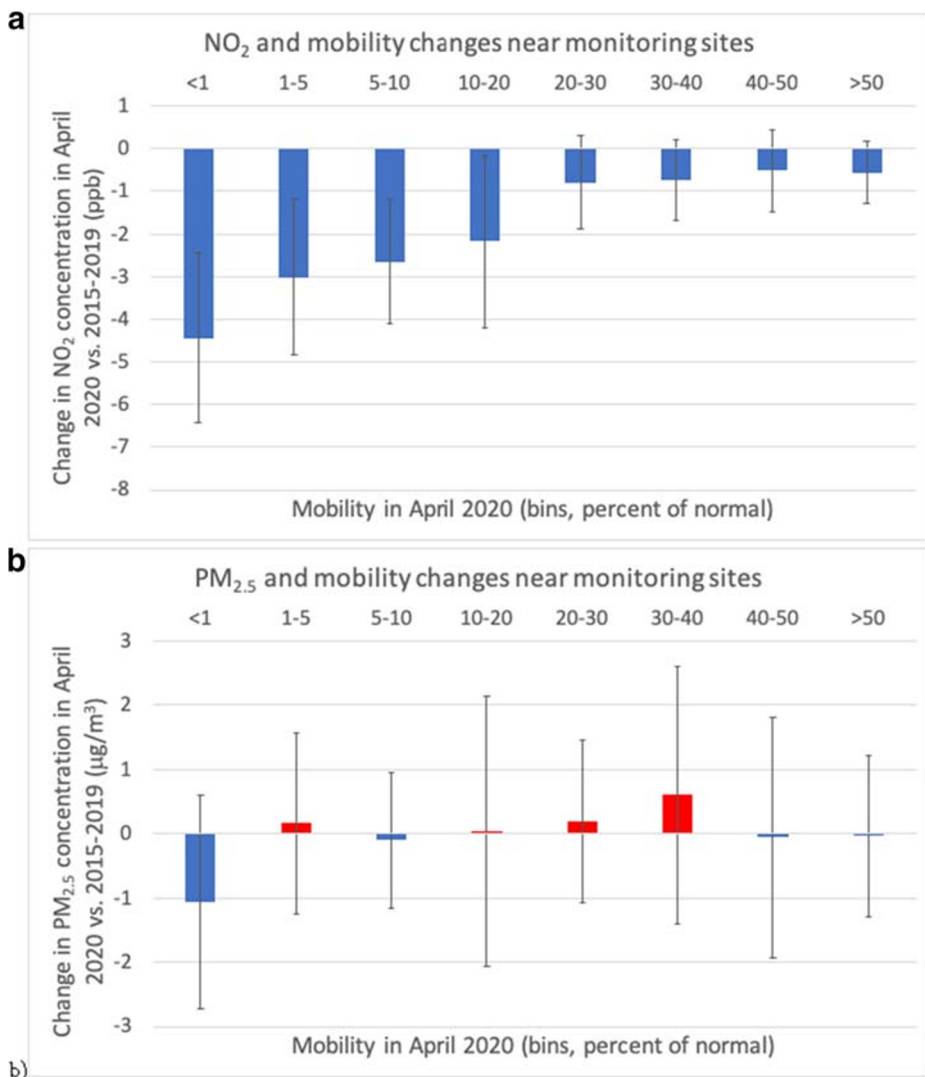


Fig. 10 Changes in monthly average concentrations of **a** NO₂ and **b** PM_{2.5} near ground monitoring sites during April of 2020 versus April of the previous five years as a function of mobility index bins in April 2020

To test this hypothesis, in a subsequent study, we will use a photochemical model, coupled with a numerical weather prediction model, which we will run with and without emissions from diesel vehicles, while keeping everything else the same. The difference between the concentrations of the pollutants in the two cases will be attributable to diesel traffic alone. Similarly, we will be able to reduce emissions from other sectors, to reflect the effect of COVID-19 on other aspects of life, such as air traffic, business closures, or residential heating. We will explore the relationship between reductions of the mobility index and residential heating increases, as more people staying at home during lockdowns likely cause higher residential heating emissions, including from biomass burning.

4 Conclusions and future work

This study analyzed the effects of COVID-19 on air quality, more specifically NO₂ and fine particulate PM_{2.5} concentrations, in the USA. Although different states introduced different levels of shelter-in-place and social distancing measures at different times, by the beginning of April 2020 all states but a few had adopted some restrictions. As such, the analysis focused on the month of April 2020, which was compared to April of the previous five years, 2015–2019.

Two types of measurements were used, NO₂ and PM_{2.5} concentrations from the ground monitoring stations—maintained by the states—and satellite-derived NO₂ column totals in the troposphere. Although the two measurements are not identical, they are strongly correlated with one another because the near-ground concentrations of NO₂ are the dominant contributors to the tropospheric column total.

To quantify social distancing, we used the mobility index calculated and distributed by Descartes Labs. Their algorithms account for people's maximum distance travelled in a day by tracing the user's location multiple times a day while using selected apps. Mobility is represented as a percent value, such that 100% means normal conditions, i.e., those during the period of 17 February–7 March 2020.

We found that NO₂ levels decreased significantly in April 2020 when compared with April of the five previous years, by up to 8 ppb in the monthly average at some locations. On average over all US monitoring sites, the decrease in NO₂ levels was between 24% (from satellite) and 27% (from ground stations). The decreases in NO₂ were largest where mobility was reduced the most, with a direct, although not linear, relationship between the two. In terms of spatial variability, hotspots of reduced NO₂ concentrations in the Northeast and California coincided perfectly with hotspots of reduced mobility. Vice versa, states where social distancing measures were minimal experienced the smallest reduction in NO₂, e.g., Wyoming and North Dakota.

By contrast, the concentrations of PM_{2.5} did not decrease significantly, but rather increased slightly during the same period and even reached unprecedented high values at about a fifth of the sites. In addition, changes in PM_{2.5} concentrations were not correlated with changes in people's mobility, neither spatially nor as aggregated statistics.

We propose that the different response to reduced people's mobility between NO₂ and PM_{2.5} could be explained by the fact that commercial vehicles (including delivery trucks, buses, trains), generally diesel fueled, remained more or less in circulation, while the use of passenger vehicles, which are primarily fueled by gasoline, decreased dramatically due to COVID-19. PM_{2.5} emissions are generally larger from diesel than from gasoline vehicles. In addition, other sources of PM_{2.5} emissions, like power plants and residential heating, did not decrease or even increased. Although our hypothesis is reasonable and consistent with the data that we have presented, the analysis conducted here is not a proof. We plan to verify this hypothesis in a subsequent study using a photochemical model coupled with a numerical weather prediction model, as described in Section 3.3, in conjunction with actual vehicle and air traffic data.

As far as we know, this is the first study to use ground monitoring stations to assess the effects of COVID-19 on air quality in the U.S. Satellite-derived NO₂ column totals have been used in a few previous studies, but none looked at the correlation between the two types of NO₂ measurements. Another innovation of this study is the use of mobility data, which are an excellent proxy for people's actual behavior, as opposed to the state or county regulations, which may or may not be fully followed by people.

This analysis has a number of limitations. First of all, we paired mobility data and pollutant concentrations at the county level, thus we implicitly assumed that the measured concentration and county-average mobility were representative of the entire county. For large counties, especially those with also low population density, this assumption may not hold. The second implicit assumption of our pairing is that local mobility affects local pollution only and, vice versa, that local pollution is affected by local mobility only. In other words, we are neglecting the effects of transport and chemical reactions, which could cause either an increase or a decrease of pollution regardless of the local mobility change in the county of interest. For example, consider the case that the prevailing wind is such that a county is located downwind of an airport. If the airport was shutdown during the pandemic, that county would see a reduction of NO₂ and PM_{2.5} concentrations even if no social distancing measures were in place. With a modeling approach, which we will pursue in the future, we will be able to properly capture the effect of transport. Another limitation is that we looked at people's mobility as the only factor explaining NO₂ concentration changes, whereas NO₂ emissions changed also in response to business and school closures, air traffic reductions, among many others sources. Meteorological factors, such as colder or warmer than usual temperatures in certain locations, may also have affected air pollution indirectly, as people heated their homes more or less than usual in April 2020 with respect to previous years. Lastly, we focused on two pollutants only, NO₂ and PM_{2.5}, because of time constraints; future work will include other regulated compounds, such as ozone and carbon monoxide.

Acknowledgments The authors would like to thank Descartes Labs for providing the mobility data free of charge. The air quality and satellite-derived data were provided by numerous federal and state agencies, listed in the references.

Funding Partial funding for this research was provided by the Delaware Natural Resources and Environmental Control (DNREC, award no. 18A00378).

Compliance with ethical standards

Conflict of interest The authors declare that they have no conflict of interest.

Open Access This article is licensed under a Creative Commons Attribution 4.0 International License, which permits use, sharing, adaptation, distribution and reproduction in any medium or format, as long as you give appropriate credit to the original author(s) and the source, provide a link to the Creative Commons licence, and indicate if changes were made. The images or other third party material in this article are included in the article's Creative Commons licence, unless indicated otherwise in a credit line to the material. If material is not included in the article's Creative Commons licence and your intended use is not permitted by statutory regulation or exceeds the permitted use, you will need to obtain permission directly from the copyright holder. To view a copy of this licence, visit <http://creativecommons.org/licenses/by/4.0/>.

References


- Bao R, Zhang A (2020) Does lockdown reduce air pollution? Evidence from 44 cities in northern China. *Science of the Total Environment* 139052. <https://doi.org/10.1016/j.scitotenv.2020.139052>
- Bauwens M, Compennolle S, Stavrakou T, Müller JF, van Gent J, Eskes H, Levelt PF, van der A R, Veeffkind JP, Vlietinck J, Yu H, Zehner C (2020) Impact of coronavirus outbreak on NO₂ pollution assessed using TROPOMI and OMI observations. *Geophys Res Lett* 47(11):e2020GL087978. <https://doi.org/10.1029/2020GL087978>

- Beydoun M, Eslami E, Jennings M (2020) HARC research analyzes effects of COVID-19 on air quality. Tech. rep., Houston Advanced Research Center (HARC). https://www.newswise.com/pdf_docs/158818399354657_BTEX.pdf
- Boersma KF, Eskes HJ, Dirksen RJ, van der A RJ, Veeffkind JP, Stammes P, Huijnen V, Kleipool QL, Sneep M, Claas J, Leitão J, Richter A, Zhou Y, Brunner D (2011) An improved tropospheric NO₂ column retrieval algorithm for the ozone monitoring instrument. *Atmos Meas Tech* 4(9):1905–1928. <https://doi.org/10.5194/amt-4-1905-2011>
- British Broadcasting Corporation (BBC) (2020) Earlier coronavirus lockdown could have saved 36,000 lives. <https://www.bbc.com/news/world-us-canada-52757150>. Accessed 06/09/2020
- Burke M (2020) COVID-19 reduces economic activity, which reduces pollution, which saves lives. <http://www.g-feed.com/2020/03/covid-19-reduces-economic-activity.html>. Accessed 06/09/2020
- Center for Disease Control and Prevention (CDC) (2020) Coronavirus disease 2019 (COVID-19): Cases in the US. <https://www.cdc.gov/coronavirus/2019-ncov/cases-updates/cases-in-us.html>. Accessed 06/09/2020
- Chan JFW, Yuan S, Kok KH, To KKW, Chu H, Yang J, Xing F, Liu J, Yip CCY, Poon RWS et al (2020) A familial cluster of pneumonia associated with the 2019 novel coronavirus indicating person-to-person transmission: a study of a family cluster. *Lancet* 395(10223):514–523
- Chen K, Wang M, Huang C, Kinney PL, Anastas PT (2020) Air pollution reduction and mortality benefit during the COVID-19 outbreak in China the lancet planetary health. [https://doi.org/10.1016/S2542-5196\(20\)30107-8](https://doi.org/10.1016/S2542-5196(20)30107-8)
- Conticini E, Frediani B, Caro D (2020) Can atmospheric pollution be considered a co-factor in extremely high level of SARS-cov-2 lethality in Northern Italy? *Environ Pollut* 261(114):465. <https://doi.org/10.1016/j.envpol.2020.114465>
- Contini D, Costabile F (2020) Does air pollution influence COVID-19 outbreaks? *Atmosphere* 11:377. <https://doi.org/10.3390/atmos11040377>
- Dantas G, Siciliano B, França BB, da Silva CM, Arbilla G (2020) The impact of COVID-19 partial lockdown on the air quality of the city of Rio de Janeiro, Brazil. *Sci Total Environ* 729(139):085
- Descartes Labs (2020a) Mobility changes in response to COVID-19. <https://github.com/descarteslabs/DL-COVID-19>. Accessed 06/01/2020
- Descartes Labs (2020b) U.S. mobility. <https://www.descarteslabs.com/mobility/>. Accessed 06/10/2020
- Dutheil F, Baker JS, Navel V (2020) COVID-19 As a factor influencing air pollution? *Environ Pollut* 263(114):466
- European Space Agency (ESA) (2020) Coronavirus lockdown leading to drop in pollution across Europe. https://www.esa.int/Applications/Observing_the_Earth/Copernicus/Sentinel-5P/Coronavirus_lockdown_leading_to_drop_in_pollution_across_Europe. Accessed 06/10/2020
- Gao S, Rao J, Kang Y, Liang Y, Kruse J (2020) Mapping county-level mobility pattern changes in the United States in response to COVID-19. *SIGSPATIAL Special* 12(1):16–26
- Isaifan R (2020) The dramatic impact of coronavirus outbreak on air quality: has it saved as much as it has killed so far? *Global J Environ Sci Manag* 6(3):275–288
- Jiang Z, McDonald BC, Worden H, Worden JR, Miyazaki K, Qu Z, Henze DK, Jones DBA, Arellano AF, Fischer EV, Zhu L, Boersma KF (2018) Unexpected slowdown of us pollutant emission reduction in the past decade. *Proc Natl Acad Sci* 115(20):5099–5104. <https://doi.org/10.1073/pnas.1801191115>
- Johns Hopkins University (2020) COVID-19 dashboard by the center for systems science and engineering (CSSE) at Johns Hopkins University (JHU). <https://coronavirus.jhu.edu/map.html>, accessed 06/16/2020
- Kerimray A, Baimatova N, Ibragimova OP, Bukenov B, Kenessov B, Plotitsyn P, Karaca F (2020) Assessing air quality changes in large cities during COVID-19 lockdowns: The impacts of traffic-free urban conditions in Almaty, Kazakhstan. *Science of the Total Environment* p 139179
- Krotkov NA, Lamsal LN, Marchenko SV, Celarier EA, J.Bucsela E, Swartz WH, Joiner J (2019) OMI core team: OMI/Aura nitrogen dioxide (NO₂) total and tropospheric column 1-orbit L2 swath 13x24 km V003. <https://doi.org/10.5067/Aura/OMI/DATA2017>. https://disc.gsfc.nasa.gov/datasets/OMNO2_003/summary. Accessed: 8/10/2020
- Le Quéré C, Jackson RB, Jones MW, Smith AJ, Abernethy S, Andrew RM, De-Gol AJ, Willis DR, Shan Y, Canadell JG et al (2020) Temporary reduction in daily global CO₂ emissions during the COVID-19 forced confinement. *Nat Clim Change* 10:1–7
- Lin JT, McElroy MB (2011) Detection from space of a reduction in anthropogenic emissions of nitrogen oxides during the chinese economic downturn. *Atmospheric Chemistry and Physics*
- Mahato S, Pal S, Ghosh KG (2020) Effect of lockdown amid COVID-19 pandemic on air quality of the megacity Delhi, India. *Science of the Total Environment* p 139086
- Mervosh S, Lu D, Swales V (2020) See which states and cities have told residents to stay at home. <https://www.nytimes.com/interactive/2020/us/coronavirus-stay-at-home-order.html>. Accessed 06/13/2020

- Mullen B (2020) COVID-19 clinical guidance for the cardiovascular care team. Tech. rep., American College of Cardiology (ACC). <https://www.acc.org//media/665AFA1E710B4B3293138D14BE8D1213.pdf>
- Nakada LYK, Urban RC (2020) COVID-19 Pandemic: Impacts on the air quality during the partial lockdown in São Paulo state, Brazil. *Science of The Total Environment* p 139087
- National Aeronautics and Space Administration (NASA) (2020) NASA probes environment, COVID-19 impacts, possible links. <https://www.nasa.gov/feature/nasa-probes-environment-covid-19-impacts-possible-links>. Accessed 06/10/2020
- Nemati M, Ebrahimi B, Nemati F (2020) Assessment of Iranian nurses' knowledge and anxiety toward COVID-19 during the current outbreak in Iran *archives of clinical infectious diseases* 15(COVID-19)
- New York State Department of Environmental Conservation (2020) Air monitoring website. <http://www.nyaqinow.net/>. Accessed 05/07/2020
- Pishue B (2020) COVID-19's impact on freight: an analysis of long-haul freight movement during a pandemic. Tech. rep. INRIX (April 28, 2020)
- Plumer B, Popovich N (2020) Traffic and pollution plummet as U.S. cities shut down for coronavirus. <https://www.nytimes.com/interactive/2020/03/22/climate/coronavirus-usa-traffic.html?auth=link-dismiss-googleItap>. Accessed 06/09/2020
- Russell AR, Valin LC, Cohen RC (2012) Trends in OMI NO₂ observations over the United States: Effects of emission control technology and the economic recession. *Atmos Chem Phys* 12(24):12,197–12,209. <https://doi.org/10.5194/acp-12-12197-2012>
- Sharma S, Zhang M, Gao J, Zhang H, Kota SH et al (2020) Effect of restricted emissions during COVID-19 on air quality in India. *Sci Total Environ* 728(138):878
- Shi X, Brasseur GP (2020) The response in air quality to the reduction of Chinese economic activities during the COVID-19 outbreak. *Geophys Res Lett* 47(11):e2020GL088,070. <https://doi.org/10.1029/2020GL088070>
- Slotnick D (2020) Coronavirus demolished air travel around the globe. These 14 charts show how empty the skies are right now. <https://www.businessinsider.com/air-traffic-during-coronavirus-pandemic-changes-effects-around-the-world-2020-4>. Accessed 06/10/2020
- Socioeconomic Data and Applications Center (SEDAC) (2020) Global rural-urban mapping project, version 1 (GRUMPv1): Urban extents grid. <https://sedac.ciesin.columbia.edu/data/set/grump-v1-urban-extents>. Accessed 8/10/2020
- Texas Commission on Environmental Quality (TCEQ) (2020) Monthly summary report by site. https://www.tceq.texas.gov/cgi-bin/compliance/monops/select_month.pl. Accessed 06/12/2020
- The Washington Post (2020) Where states are reopening after the U.S. shutdown. <https://www.washingtonpost.com/graphics/2020/national/states-reopening-coronavirus-map/>. Accessed 06/09/2020
- Tobías A, Carnerero C, Reche C, Massagué J, Via M, Minguillón MC, Alastuey A, Querol X (2020) Changes in air quality during the lockdown in Barcelona (Spain) one month into the SARS-cov-2 epidemic. *Science of the Total Environment* p 138540
- U.S. Environmental Protection Agency (EPA) (2020a) Ground-level ozone pollution. <https://www.epa.gov/no2-pollution/basic-information-about-no2#What%20is%20NO2>. Accessed 06/10/2020
- U.S. Environmental Protection Agency (EPA) (2020b) Nitrogen dioxide (NO₂) pollution. <https://www.epa.gov/ground-level-ozone-pollution/ground-level-ozone-basics>. Accessed 07/28/2020
- U.S. Environmental Protection Agency (EPA) (2020c) Particulate Matter (PM) pollution. <https://www.epa.gov/pm-pollution/particulate-matter-pm-basics#PM>. Accessed 06/10/2020
- U.S. Environmental Protection Agency (EPA) (2017) Profile of version 1 of the 2014 national emissions inventory. Tech. rep., Office of Air Quality Planning and Standards. https://www.epa.gov/sites/production/files/2017-04/documents/2014neiv1_profile_final_april182017.pdf. Accessed 06/17/2020
- U.S. Environmental Protection Agency (EPA) Air Quality System (2020) Pre-generated data files. https://aqs.epa.gov/aqsweb/airdata/download_files.html. Accessed 5/20/2020
- U.S. Environmental Protection Agency (EPA) AirNow (2020) AirNow API. <https://docs.airnowapi.org/>. Accessed 5/27/2020
- U.S. National Aeronautics and Space Administration (NASA) EarthScienceDataSystems(ESDS) (2020) Giovanni, The bridge between data and science. <https://giovanni.gsfc.nasa.gov/giovanni/>. Accessed 05/30/2020
- Valin LC, Russell AR, Hudman RC, Cohen RC (2011) Effects of model resolution on the interpretation of satellite NO₂ observations. *Atmos Chem Phys* 11(22):11,647–11,655. <https://doi.org/10.5194/acp-11-11647-2011>
- Warren MS, Skillman SW (2020) Mobility changes in response to COVID-19. Tech. rep., Descartes Labs. arXiv:2003.14228. Available at <https://www.descarteslabs.com/wp-content/uploads/2020/03/mobility-v097.pdf>

- Worden H, Martínez-Alonso S, Park M, Pan L (2020) COVID-19 impact on Asian emissions: Insight from space observations. <https://www2.acom.ucar.edu/news/covid-19-impact-asian-emissions-insight-space-observations>. Accessed 06/09/2020
- World Health Organization (WHO) RegionalOfficeforEurope (2020) WHO announces COVID-19 outbreak a pandemic. <http://www.euro.who.int/en/health-topics/health-emergencies/coronavirus-covid-19/news/news/2020/3/who-announces-covid-19-outbreak-a-pandemic>. Accessed 06/09/2020
- World Health Organization (WHO) (2020a) Coronavirus disease 2019 (COVID-19) situation report – 94. https://www.who.int/docs/default-source/coronaviruse/situation-reports/20200423-sitrep-94-covid-19.pdf?sfvrsn=b8304bf0_2. Accessed 06/09/2020
- World Health Organization (WHO) (2020b) Air pollution. https://www.who.int/health-topics/air-pollution#tab=tab_1. Accessed 06/10/2020
- Worldometers.info (2020) COVID-19 coronavirus pandemic. <https://www.worldometers.info/coronavirus/>. Accessed 06/09/2020
- Wu X, Nethery RC, Sabath BM, Braun D, Dominici F (2020) Exposure to air pollution and COVID-19 mortality in the United States medRxiv. <https://doi.org/10.1101/2020.04.05.20054502>
- Yongjian Z, Jingu X, Fengming H, Liqing C (2020) Association between short-term exposure to air pollution and COVID-19 infection: evidence from China. *Science of the total environment* p 138704
- Zambrano-Monserrate MA, Ruano MA, Sanchez-Alcalde L (2020) Indirect effects of COVID-19 on the environment. *Science of The Total Environment* p 138813
- Zhang R, Zhang Y, Lin H, Feng X, Fu TM, Wang Y (2020) NO_x emission reduction and recovery during COVID-19 in East China. *Atmosphere* 11(4):433

Affiliations

Cristina L. Archer¹  · Guido Cervone² · Maryam Golbazi¹ · Nicolas Al Fahel³ · Carolynne Hultquist⁴

¹ College of Earth, Ocean, and Environment, University of Delaware, Newark, Delaware, 19716, USA

² Institute for Computational and Data Science, The Pennsylvania State University, University Park, Pennsylvania, 16802 USA

³ Biden School of Public Policy and Administration, University of Delaware, Newark 19716, Delaware, USA

⁴ Center for International Earth Science Information Network (CIESIN), The Earth Institute at Columbia University, Palisades, New York, 10964 USA