

Spectral dependence of nonlinear absorption in ordered silver metallic nanoprism arrays

Original

Spectral dependence of nonlinear absorption in ordered silver metallic nanoprism arrays / Sanchez-Esquivel, H.; Raygoza-Sanchez, K. Y.; Rangel-Rojo, R.; Gemo, E.; Michieli, N.; Kalinic, B.; Reyes-Esqueda, J. A.; Cesca, T.; Mattei, G.. - In: SCIENTIFIC REPORTS. - ISSN 2045-2322. - ELETTRONICO. - 7:(2017). [10.1038/s41598-017-04814-2]

Availability:

This version is available at: 11583/2989982 since: 2024-06-28T20:06:59Z

Publisher:

Springer Nature

Published

DOI:10.1038/s41598-017-04814-2

Terms of use:

This article is made available under terms and conditions as specified in the corresponding bibliographic description in the repository

Publisher copyright

(Article begins on next page)

SCIENTIFIC REPORTS



OPEN

Spectral dependence of nonlinear absorption in ordered silver metallic nanoprism arrays

Héctor Sánchez-Esquivel¹, Karen Y. Raygoza-Sánchez¹, Raúl Rangel-Rojo¹, Emanuele Gemo², Niccolò Michieli², Boris Kalinic², Jorge Alejandro Reyes-Esqueda³, Tiziana Cesca² & Giovanni Mattei²

Ordered metallic nanoprism arrays have been proposed as novel and versatile systems for the observation of nonlinear effects such as *nonlinear absorption*. The study of the effect of the local field reinforcement on the fast optical third order nonlinear response around the *Surface Plasmon Resonance* is of great interest for many plasmonic applications. In this work, silver nanoprism arrays have been synthesized by the *nanosphere lithography* method. A low repetition rate tunable picosecond laser source was used to study the irradiance and wavelength dependence of the *nonlinear absorption* properties around the dipolar and quadrupolar resonances of the nanoarray with the use of the *z-scan technique*. The irradiance dependence of the on-resonance nonlinearity was studied, and a spectral region where nonlinear absorption is negligible was identified. This is important for the possible application of these materials in optical information processing devices.

The promise of novel materials with a-la-carte optical properties has placed nanostructures in the focus of intense research activity for applications such as all-optical switching, biomedics and solar-energy^{1–4}. In the case of metal nanoparticles in dielectric media, an effect known as *localized surface plasmon resonance* (LSPR) has been studied for quite some time⁵. These resonances are understood as collective oscillations of the free electrons localized along the metal nanoparticle surface with an associated confined electromagnetic field. As the dimensions of these nanoparticles approach tens of nanometers, the evanescent local polariton wave experiences dielectric confinement, increasing the effective third order electric susceptibility $\chi_{eff}^{(3)}$ of the medium^{6–8}. Also, the presence of vertices in the metallic nanoparticle morphology has been shown to further increase the enhancement of the nonlinear properties of the composite material⁹. Because of this, nanoparticle design shifted quickly towards geometries featuring a greater number and curvature of their vertices. Also when two or more nanoparticles are present in close proximity, such configurations are sometimes called nano-antennas, providing parallelism with the much more known electrical devices, resulting in enhanced electric field amplitudes¹⁰ and therefore, in an enhanced effective nonlinear response as well. Furthermore, as the number of ordered and close-proximity nanoparticles is increased, the total electric field reinforcement of the ensemble approaches the result of the coherent sum of their elementary contributions. As such, it has been demonstrated that arrays of ordered nanoparticles offer greater nonlinear response than their disordered counterparts¹¹. One nanoparticle geometry that has gained popularity in recent years is the plasmonic nanoprism¹², and more specifically, *metallic nanoprism arrays* (MNPAs) embedded in dielectrics. Structures such as MNPAs take advantage of all the previously mentioned nonlinear enhancement properties and thus are positioned as attractive potential hosts for applications based on third-order nonlinear effects such as *nonlinear absorption* (NLA) and *nonlinear refraction* (NLR)¹³. Amongst the wide gamut of techniques for nanoparticle manufacturing, great weight is placed on fabrication time, cost, and difficulty. In these terms, *nanosphere lithography* (NSL) is an attractive technique for the production of MNPAs. With this technique, greater control of the material LSPR properties is gained by simple modification of the fabrication parameters¹².

¹Departamento de Óptica, División Física Aplicada, CICESE, A.P. 360, Ensenada, 22860, BC, Mexico. ²Dipartimento di Fisica e Astronomia Galileo Galilei, Università degli Studi di Padova, Padova, Italy. ³Instituto de Física, Universidad Nacional Autónoma de México, Circuito de la Investigación Científica, Ciudad Universitaria, Delegación Coyoacán, C.P., 4510, Ciudad de México, Mexico. Héctor Sánchez-Esquivel, Raúl Rangel-Rojo, Tiziana Cesca and Giovanni Mattei contributed equally to this work. Correspondence and requests for materials should be addressed to R.R.-R. (email: rrangel@cicese.mx) or T.C. (email: tiziana.cesca@unipd.it)

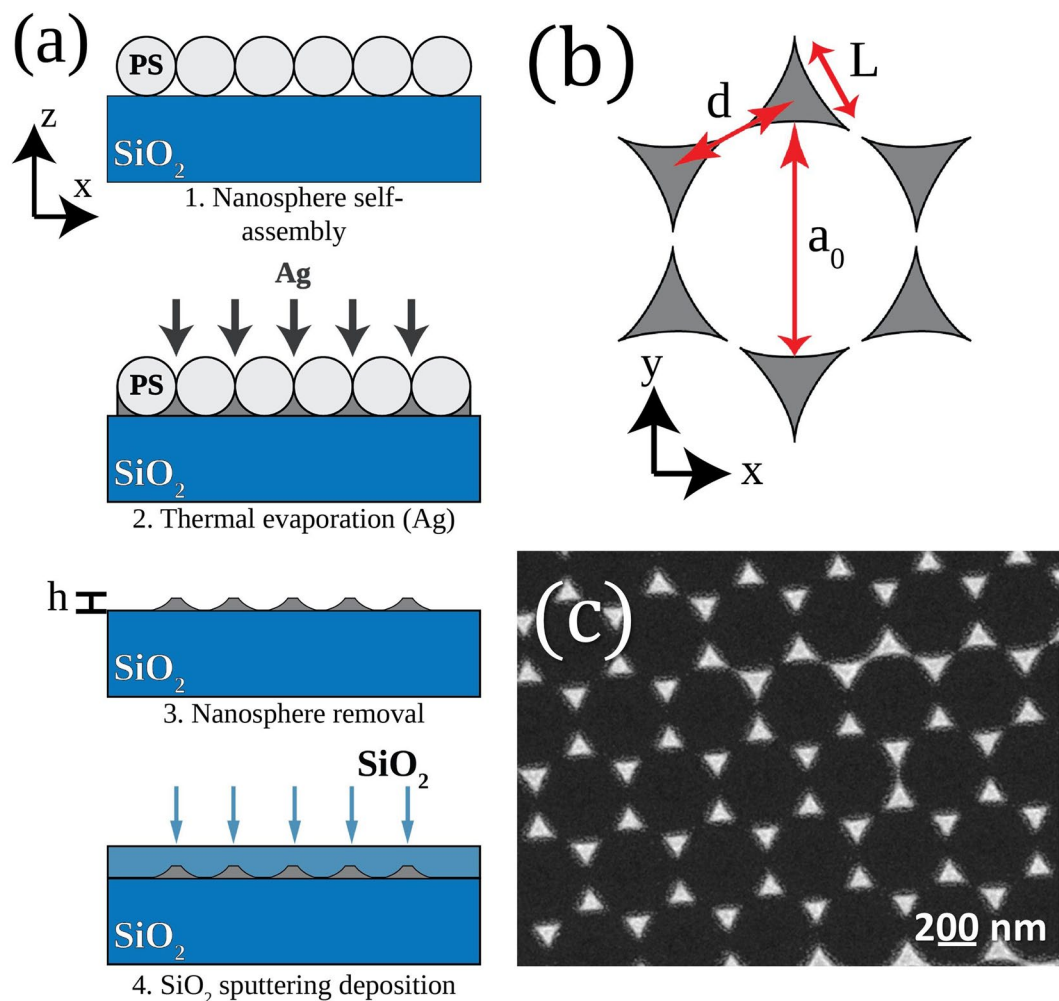


Figure 1. (a) MNPAs manufacturing process: (1) colloidal mask formation by self-assembly of PS nanospheres on a silica substrate; (2) thermal evaporation of Ag onto the PS nanospheres; (3) nanosphere removal; (4) deposition by magnetron sputtering of a protecting layer of silica. (b) Nanoprism array geometry. The definitions of the relevant geometric parameters of the nanoarray are: the lattice parameter is a_0 (corresponding to the PS nanospheres diameter), the distance between the nanoprisms d , the nanoprisms length L and height h . (c) SEM image in plane view of the synthesized MNPAs.

In this work we provide a study of the rich NLA behavior of MNPAs fabricated by NSL, using the single beam z-scan technique¹⁴, which allows to determine the magnitude and sign of the NLA effects. A tunable laser source with pulse duration in the picosecond range and low pulse repetition rate was used to study the NLA around the dipolar resonance LSPR features of the nanoarray. This scheme is of special interest due to its ability to observe fast responses as well as rendering negligible thermal contribution. A study of the dependence of the NLA of MNPAs as a function of the input irradiance and the peak absorption wavelength is also presented.

Experimental Section

Synthesis of ordered metallic nanoprism arrays. The *nanosphere lithography* (NSL) technique was used in order to fabricate 2D ordered arrays of plasmonic Ag nanoprisms^{12, 15–17}. The manufacturing process is briefly sketched in Fig. 1. First, polystyrene (PS) nanospheres were self-assembled on the surface of a clean silica glass substrate. The cleaning agent used was a “piranha” solution ($\text{H}_2\text{SO}_4:\text{H}_2\text{O}_2$, 3:1) while the PS nanospheres were of 522 nm nominal diameter (MicroParticles GmbH). Following the formation of the colloidal layer of nanospheres, thermal evaporation of Ag was performed. The deposited layer thickness was measured by the use of a calibrated quartz microbalance. Thereafter the polystyrene nanospheres were mechanically removed by use of an adhesive tape. A silica layer was then deposited by magnetron sputtering on the MNPAs in order to prevent possible oxidation effects as well as physical damage. This top protective layer was estimated to be 160 nm thick.

Structural and linear characterization. The resulting nanostructures were observed with a FE-SEM microscope (model LEO 1530, Zeiss) with a nominal operation voltage between 0.2 and 30 kV. The final height of the nanoprisms was measured by atomic force microscopy (AFM, model NT-MDT Nova Solver-PRO in non-contact mode). The relevant geometric parameters of the nanoarray are defined in label b in Fig. 1: a_0 is the

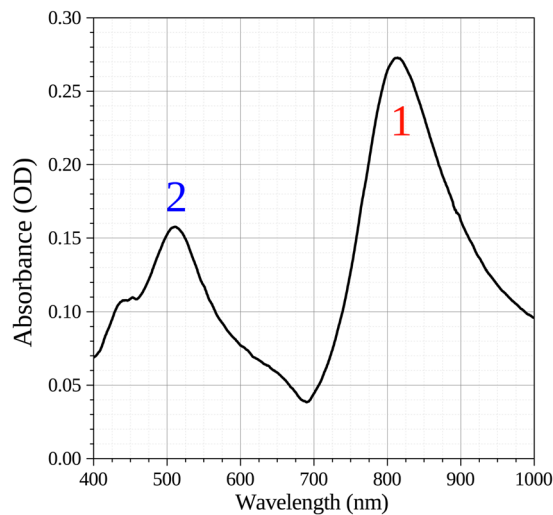


Figure 2. Optical absorbance spectrum of an Ag nanoprism array (height $h = 70$ nm), showing a characteristic LSPR response with well defined dipolar (1) and quadrupolar (2) peaks.

lattice parameter (corresponding to the PS nanospheres diameter), d is the distance between the nanoprisms, L the side length of each nanoprism and h their height. For the MNPs investigated in the present work the parameters were $a_0 = 522 \pm 5$ nm, $d = 302 \pm 6$ nm, and $L = 155 \pm 3$ nm; concerning the nanoprisms height, two sets of samples were synthesized with $h = 70 \pm 2$ nm, and $h = 49 \pm 2$ nm. The linear absorption spectra of the nanoarrays, given by $OD = -\log(I/I_{in})$ with I the output intensity and I_{in} the input intensity, were recorded with a JASCO V670 dual beam spectrophotometer. The spectrum of the array of 70 nm height is shown in Fig. 2.

FEM simulations. Finite Elements Method (FEM) electrodynamic simulations of the linear optical properties of the synthesized MNPs were performed with the software COMSOL Multiphysics 5.1 by solving the Helmholtz equation in the frequency domain¹⁸. A hexagonal unit cell was considered to model the array of nanoprisms in the $\hat{x}\hat{y}$ plane. Each vertex of the hexagonal cell contains a third of a nanoprism and the tips of the nanoprisms were along the edges of the cell. In the direction of light propagation (\hat{z} direction), the nanoprisms were placed on a silica substrate at the $z=0$ plane and surrounded on top by a silica layer. In the \hat{x} and \hat{y} directions, periodic boundary conditions (PBC) were considered. Unphysical radiation backscattering from external boundaries was absorbed by using Perfectly Matched Layer (PML) sub-domains added over and below the simulated domains. To determine the silver dielectric functions to be used in the simulations, ellipsometry measurements were performed on planar Ag films made by thermal evaporation with the same conditions as for the MNPs. A J. Woolham V-VASE spectroscopic ellipsometer was used for the measurements. The index of refraction of the silica substrate and top layer was set to $n = 1.46$. FE-SEM images of the synthesized samples were used to model the shape of the nanoprisms, while their height was obtained by AFM measurements.

Nonlinear absorption measurements. The third order nonlinear absorption properties of the MNPs were studied with the z -scan technique¹⁴, by performing *open aperture* (OA) measurements. The spectral dependence of the NLA was studied using a picosecond laser source coupled to an *optical parametric amplifier* (OPA). This allowed for a maximum pulse energy of up to 1 mJ as well as a tunable wavelength between 450 and 1100 nm, with pulses shorter than 20 ps and a repetition rate of 10 Hz. A 100 mm converging lens was used to focus the laser beam in the z -scan method. The beam waist w_0 at the lens focus was measured using the razor-edge method¹⁹. At $\lambda_0 = 633$ nm, w_0 was about 30 μ m. Properly calibrated optical density filters were used to control the average peak intensity I_0 at various points in the experiment. In order to prevent sample damage or modification during the scans, the laser beam peak intensity I_0 was maintained under 1 GW/cm² in all cases. Two Si photodetectors were used to detect both the transmitted intensity as well as the laser pulse energy as a reference to minimize the effects of laser fluctuations. For each point, the photodetectors response was measured with the help of an oscilloscope, and a 10% on peak integration window was chosen. The integrated value was then obtained by averaging over 250 pulses for each z position.

Results and Discussion

The optical response of plasmonic nanostructures depends on several variables such as the size, shape, composition of the nanoparticles, the dielectric contrast with the host medium and the coupling effects amongst the nanostructures, which is in turn dependent on their arrangement^{20–22}. As an example, in Fig. 2 we report the optical absorbance spectrum of a 70 nm height Ag nanoprism array embedded in silica. This spectrum clearly shows two resonance peaks at 811 and 511 nm; these peaks call on the different LSPR characteristics of the nanoarrays with the peak at 811 nm (label 1 in Fig. 2) being the result of the dipolar resonance while the one at 511 nm (label 2 in Fig. 2) due to a quadrupolar response^{13, 23–25}. The small shoulder visible in the spectrum at around 450 is instead very likely related to the presence of defects in the experimental sample.

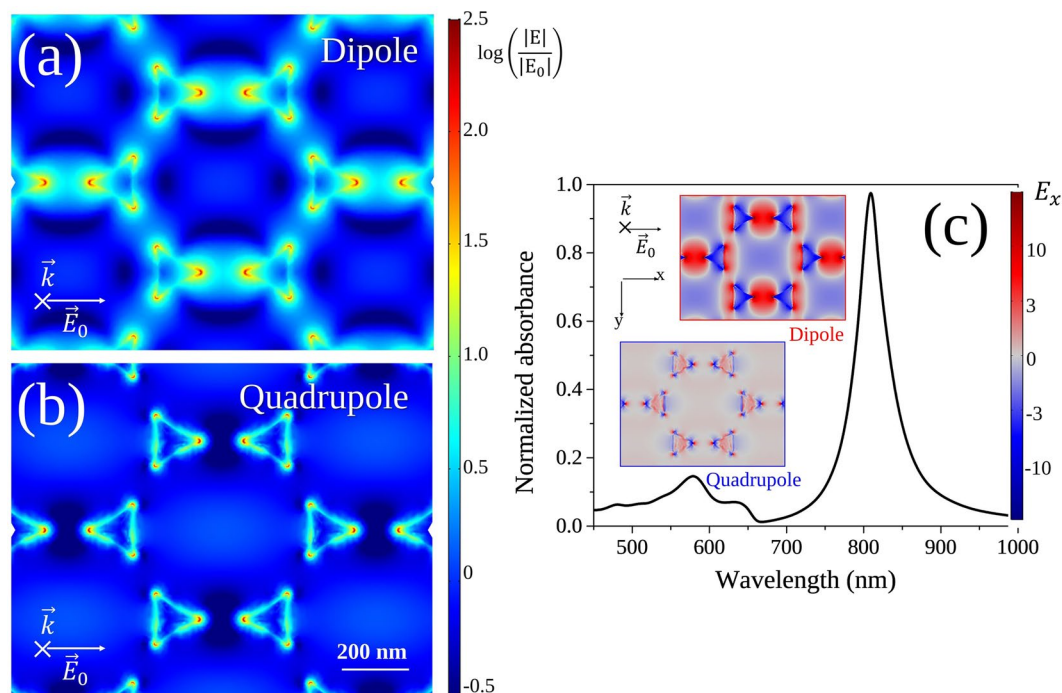


Figure 3. Simulated maps of local-electric field enhancement factor, in logarithmic scale, evaluated at the dipolar (a) and quadrupolar (b) SPR resonance peaks. E_0 is the incident electric field amplitude. Panel (c) portrays the normalized absorbance spectrum obtained by FEM Simulations. The insets show the maps of the \hat{x} component of the electric field E_x (i.e., parallel to the incident field E_0) evaluated at the dipolar and quadrupolar resonances.

Numerical analysis of the local field enhancement due to the nanostructure has suggested that the LSPR peaks are mostly determined by the interaction found in the dielectric-metal interface¹³. Therefore, since the addition of the silica protective cover greatly increases the surface area between the nanoparticles and dielectric, the LSPR response is expected to be reinforced in our samples. Finite elements method (FEM) simulations of the local-electric field in the investigated nanoprism arrays have been performed at both the dipolar and quadrupolar resonance wavelengths. The corresponding simulated maps of local-field enhancement factor $F = |E|/|E_0|$ are reported in Fig. 3. In Fig. 3(a,b) we reported the simulated absorbance spectrum (normalized to its maximum). The insets show the maps of the \hat{x} component of the electric field, E_x (i.e., parallel to the incident field E_0) evaluated at the two resonances. In the simulations, it can be seen that the electric field distribution is greatly confined at the tips of the nanoprism elements and the confinement is stronger at the quadrupolar resonance due to the shorter decay length of the multipolar plasmon mode. Moreover a total reinforcement of the electric field magnitude of more than 300 times ($\log(F) = 2.5$) is obtained due to near-field coupling among the nanoprisms in the array. In this work, we focused our efforts on two different aspects of the nonlinear response of MNPA. In first instance, we studied the irradiance dependence of the NLA at resonance with both the dipolar and quadrupolar absorption feature. This is in order to understand the nature of the nonlinearity. In a second part, we studied the spectral dependence of the response across the dipolar plasmon resonance, to look for spectral regimes with negligible nonlinear absorption. The measurements were done with a peak intensity I_0 of up to 500 MW/cm², a relatively low value in comparison to similar experiments^{13,26,27}. Because of the signal-to-noise ratio of our experimental set-up, no measurement at intensities lower than $I_0 = 20$ MW/cm² showed useful results. These experimental conditions avoided damage or permanent modification in the sample as it was scanned, as checked by issuing back and forth scans with the same intensities.

Irradiance dependence. Figure 4 shows the open aperture z-scan results obtained for both the quadrupolar and dipolar resonances taken at different input irradiance values. The results show in all cases the presence of saturable absorption, i.e. a transmittance that increases with irradiance, resulting in a maximum at the focal plane ($z=0$). This was expected due to the wavelength being on resonance for both cases. For the quadrupolar response at $\lambda_Q = 511$ nm (Fig. 4a) however, the magnitude of the NLA effect with the input pulse intensity is considerably smaller than that at the dipolar resonance at $\lambda_D = 811$ nm for similar input irradiance values. For the study at 811 nm, as shown in Fig. 4b, the effect also increases monotonically when the input irradiance is augmented but seems to start saturating at input irradiances around 200 MW/cm².

A diminishing or increasing transmittance is usually modeled by an irradiance dependent absorption coefficient $\alpha(I)$ given by $\alpha(I) = \alpha_0 + \beta I$, where β is the so called *nonlinear absorption coefficient*; where β can be positive (*induced or reverse saturable absorption, RSA*), or negative (*saturable absorption, SA*). This model implies however that the maximum transmittance increases or decreases linearly with irradiance, something that is often not

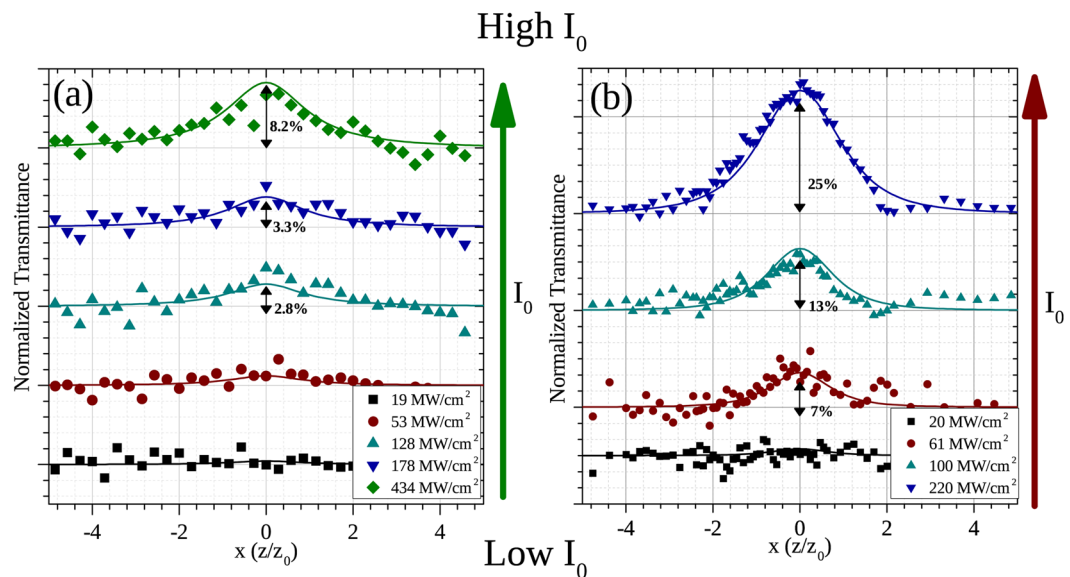


Figure 4. Open-aperture (OA) z-scans of Ag nanoprism array of 70 nm height, measured at (a) the quadrupolar resonance ($\lambda_Q = 511$ nm) and (b) the dipolar resonance ($\lambda_D = 811$ nm). The scans were taken with different laser peak intensities I_0 , as indicated in the legend. Solid lines are best-fits to the experimental data.

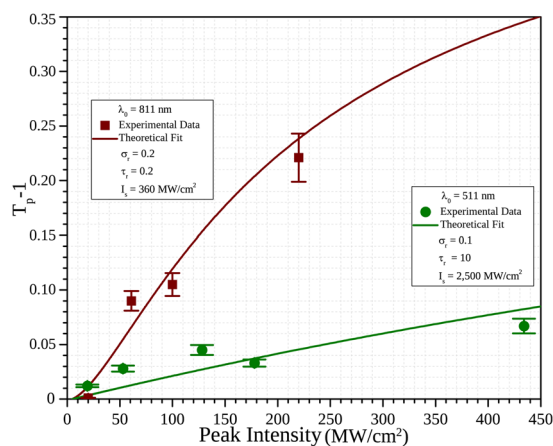


Figure 5. Experimental data and best-fit calculations for the maximum NLA change given by $T_p - 1$ at both the dipolar (red squares for experiment data and red solid line for theoretical fit) and the quadrupolar (green circles for experiment data and green solid line for theoretical fit) regimes. While the quadrupolar regime shows an early saturation effect at low intensities, the dipolar response saturates at much higher peak intensities.

observed in the experiments. In Fig. 5, we show the value of the maximum transmittance change $T_p - 1$, observed for the z-scan results in Fig. 4, as a function of the input irradiance. For both the dipolar (811 nm) and the quadrupolar (511 nm) resonances, it is easily seen that the transmittance change does not increase linearly with the input irradiance, but rather tends to saturate at higher irradiances. This saturation is sometimes taken into account by modifying the expression for $\alpha(I)$ given by equation 1 to $\alpha(I) = \alpha_0 + \beta_0 I / (1 + I/I_s)^{13}$, where a saturation irradiance I_s is introduced and β_0 is now the *unsaturated or low irradiance nonlinear absorption coefficient*, which again could be positive as well as negative to account for induced or saturable absorption respectively. On the other hand, for resonant interactions, a two-level model results in $\alpha(I) = \alpha_0 / (1 + I/I_s)$, which represents a saturable absorption with an irradiance dependence that is clearly not linear, but saturates at higher irradiances. Moreover, when there are higher lying energy states that can be accessible from the first excited state by further light absorption, a three-level system needs to be employed. Such a three-level has been used before to explain the spectral and irradiance dependence of the nonlinear absorption of different materials^{28, 29}, and can produce a NLA that changes sign at different input irradiances, which has been observed. For the MNPA systems presented here, the presence of the quadrupolar plasmon absorption indicates that further absorption beyond the excitation of the dipolar plasmon is possible, and therefore this model should be used. In the most general form of this model, transitions between the three levels are allowed: direct transitions from the ground state to either of the

λ_0 (nm)	σ_r	τ_r	I_s (MW/cm ²)
511	0.2	0.2	360
811	0.1	10	2500

Table 1. Fitting parameters for the data at the two resonances.

excited states $|2\rangle$ or $|3\rangle$, and excited state absorption, i.e. $|2\rangle \rightarrow |3\rangle$ transitions. Decay from level 3 into either level $|1\rangle$ ²⁸, or level $|2\rangle$ ²⁹ has been considered, with no change in the structure of the irradiance dependence of the non-linearity obtained. The resulting rate equations are then solved in the steady state, and an effective susceptibility $\chi_{eff}^{(3)}$, can be calculated from the solution. In the present case, we will consider only the direct transition from the ground state and the excited state absorption, i.e. $|1\rangle \rightarrow |2\rangle$ and $|2\rangle \rightarrow |3\rangle$ transitions and hence the absorption cross-section $\sigma_{13} \cong 0$. For simplicity, we will also consider decay from level $|3\rangle$ only through the $|3\rangle \rightarrow |2\rangle$ transition, but again, this is not a very restrictive assumption.

For the case of NLA, the intensity dependent absorption coefficient can be extracted from $\text{Im}\{\chi_{eff}^{(3)}\}$ to yield²⁹:

$$\alpha(I) = \alpha_0 \left\{ \frac{1 + \sigma_r(I/I_s)(1 + \tau_r)}{1 + (I/I_s)(2 + \sigma_r\tau_r) + 3(I/I_s)^2\sigma_r\tau_r} \right\}, \quad (1)$$

where α_0 is the linear absorption coefficient ($\alpha_0 = \sigma_{12}N_0$ with N_0 the number density of the material), $\sigma_r \equiv \sigma_{23}/\sigma_{21}$, $\tau_r \equiv \tau_{32}/\tau_{21}$ and σ_{ij} and τ_{ij} are the absorption cross-section and relaxations times for the $i \rightarrow j$ transitions, respectively. For the purely absorptive nonlinear case, expression (1) is used to describe propagation through the sample by calculating:

$$dI/dz' = -\alpha(I)I, \quad (2)$$

from $z' = 0$ to $z' = L$, with L the sample thickness. To obtain the open aperture z-scan trace, this integral must be calculated at each z position of the sample as well as for each I_0 , as the position dependent irradiance $I(z)$ changes with z . The irradiance dependence of the open aperture z-scan data was fitted with this model for both the dipolar ($\lambda_D = 811$ nm) and quadrupolar ($\lambda_Q = 511$ nm) resonances. In Figs 4 and 5, the fits made with this model for each data set at a given input irradiance and the fitted irradiance dependence for $T_p - 1$ at 511 and 811 nm are shown. These fits were obtained via numerical calculation of the solution for equation 1 at each z position. The model fits very well the irradiance dependence in both cases and the fitting parameters τ_r , σ_r , and I_s for each wavelength were obtained and are presented in Table 1.

One advantage of this model and calculation method is that only one set of parameters per wavelength is needed to obtain traces for any given z-scan set without losing physical relevance. Although at first sight there are too many free parameters for a unique fit, fitting the data at different input irradiances eliminates any ambiguities in the determination of the model parameters. The fitting to the model allows us in first instance to extrapolate the results to higher irradiances than those employed. Furthermore, the parameters extracted from the fit, together with linear optical measurements (which allow determination of σ_{12} and τ_{21}) can be used to obtain σ_{23} and τ_{32} , which are usually experimentally difficult to determine. Closed-aperture z-scans will in principle present also such saturation effects. However, not having a very good spatial shape for the pulses precluded us from making any quantitative studies.

The large nonlinear response observed in a sample that is only 70 nm thick can be seen as the result of the field enhancement observed in the numerical calculations, and of the coherent addition of the contribution of each nanoprism element. The observed nonlinear absorption is markedly larger for the dipolar resonance as compared to the quadrupolar. This is expected since the absorption peak is stronger for the former, indicating a larger dipolar moment. The nonlinear response will be also a fraction of this moment, giving rise to the larger response.

Wavelength dependence. Much interest has been placed in studying the “on peak” nonlinear response of plasmonic materials, yet its fine wavelength dependence is very rarely explored. This is due to the assumption that the nonlinear response is maximum strictly on resonance with the LSPR, an assumption that is usually not tested³⁰. This, altogether with the nonlinear plasmonic nanomaterials potential for frequency based multiplexing applications, makes it clear that the fine wavelength dependence of plasmonic materials is of special interest.

To this aim, in the present work we studied the spectral dependence of the nonlinear absorption properties of the investigated silver nanoprism arrays around the dipolar resonance. In order to avoid possible damage to the sample, a new one containing nanoprism arrays of height $h = 49 \pm 2$ nm (and same lattice parameter $a_0 = 522 \pm 5$ nm) was synthesized, whose dipolar LSPR is thus shifted at a slightly longer wavelength of 850 nm. Moreover, in this way the whole peak was within the optical working range of the OPA (i.e. above the signal-to-idler crossing point at 710 nm). We concentrated the study of wavelength around the dipolar resonance only, since the nonlinear response is considerably larger than that of the quadrupolar one. All the measurements were made at the same irradiance of about $I_0 = 120$ MW/cm², in order to establish a direct comparison between the data at different λ . This relatively low irradiance I_0 value was chosen in order to minimize possible saturation effects, and to be as close as possible to a purely third order nonlinearity. In the limit of low irradiance, the three-level model expression given by equation 1 for $\alpha(I)$ can be approximated to yield $\alpha(I) \simeq \alpha_0 + \beta_0 I$, where $\beta_0 = \alpha_0(\sigma_r - 2)/I_s$ is the unsaturated NLA coefficient. The figure β_0 can take positive (corresponding to RSA) or negative (SA) values. Therefore, the full three-level model was used to fit the open aperture z-scan data, and the values of β_0 at the used wavelengths were calculated in this way. Figure 6a shows the calculated β_0 values together

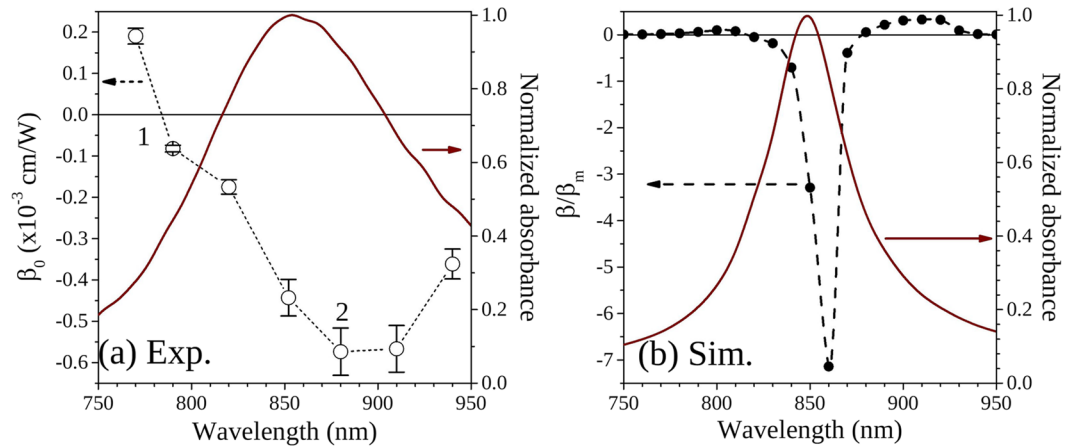


Figure 6. Wavelength dependence around the dipolar resonance peak of NLA of MNPAs with a height $h = 49$ nm. Panel (a) shows the unsaturated NLA coefficient β_0 estimated from the open-aperture z-scan experimental data. Also shown is the normalized linear absorbance spectrum. Two regions of interest are noted, with label 1 showing a change of sign in the nonlinearity and thus a cross by zero, and label 2 presenting a red-shift in the maximum nonlinear response with respect to the linear resonance. Panel (b) shows the results calculated with equation (4); the normalized linear absorbance spectrum obtained from FEM simulations is also reported.

with the linear absorbance spectrum of the sample, normalized to its maximum. For wavelengths shorter than 770 nm (label 1 in Fig. 6a) the results show a positive value of β_0 , indicating an induced absorption process or RSA. In addition, for wavelengths longer than 790 nm, the results show the presence of saturable absorption, characterized by a negative β_0 . Another thing that can be observed from the results is that the largest $|\beta_0|$ value measured is not at the resonant peak, $\lambda_D = 850$ nm, but at a rather longer wavelength of 880 nm. The fact that the maximum $|\beta_0|$ value does not correspond with the absorption peak, as would be expected for a single resonance, has probably to do with the presence of the shorter wavelength quadrupole resonance, and its influence on the NLA spectral dependence²⁹.

Moreover, it has to be noted that for nanostructures that present high curvature regions, as the tips of the nanoprisms in the present case, the spectral position of the maximum field enhancement may be different according to the region considered, e.g. the hot-spot regions at the nanoprisms tips or the whole nanoprism³¹. Since the formation of these hot-spots in the MNPA control their nonlinear behavior, whereas their linear absorbance depends on the average electric field in the nanoarray, this may account for spectral differences in the maximum linear and nonlinear response of these nanosystems. In order to further investigate this aspect, we performed FEM electrodynamic simulations. Indeed, the spectral dependence observed in the nonlinear absorption response of the investigated MNPA can be explained as a consequence of the wavelength-dependent distribution of the local electric field in the nanoprism array. Particularly, the electric field distribution calculated by FEM simulations can be used to estimate the effective third-order nonlinear susceptibility, $\chi_{eff}^{(3)}$, of the investigated nanosystems. Indeed, following the approach used by Debrus *et al.*^{32,33}, for metal-dielectric composite materials $\chi_{eff}^{(3)}$ can be expressed in the form:

$$\chi_{eff}^{(3)} = \chi_m^{(3)} \frac{1}{V} \frac{\int E^2(\lambda) |E(\lambda)|^2 dV}{E_0^2 |E_0|^2 V}, \quad (3)$$

where V is the unit cell volume of the composite material, E_0 is the incident electric field amplitude and E is the local-field amplitude in the material. From expression (3), assuming that the nonlinear contribution of the silica matrix is negligible with respect to that of the metal and that the complex cubic susceptibility of the metal component, $\chi_m^{(3)}$, is dominated by its imaginary part, the nonlinear absorption coefficient of the MNPA investigated in the present work can be expressed according to the equation^{34,35}:

$$\frac{\beta(\lambda)}{\beta_m(\lambda)} = \text{Re} \left[\frac{\int E^2(\lambda) |E(\lambda)|^2 dV}{E_0^2 |E_0|^2 V} \right] \frac{n_0(\lambda)^2}{n_{eff}(\lambda)^2}, \quad (4)$$

where n_0 is the refractive index, n_{eff} is the effective refractive index of the MNPA and β_m is the intrinsic nonlinear absorption coefficient of a homogeneous silver film. Very recently, this approach was also successfully used by our group to describe the polarization-dependent nonlinear absorption properties of similar silver nanoprism arrays³⁵. The value of n_0 at the different wavelengths was experimentally determined by spectroscopic ellipsometry measurements performed on a silver film made by thermal evaporation with the same conditions used for the synthesis of the MNPA. $n_{eff}(\lambda)$ was instead computed with the S-matrix method³⁶ by using the local electric field distribution at the different λ obtained by FEM simulations. Moreover, for a homogenous metallic film, far

from the interband transitions as in the present case, β_m is expected to have a very weak wavelength dependence³⁴. Thus, the main spectral features in the nonlinear response of the investigated MNPA can be accounted by evaluating the right-hand term in equation 4. In Fig. 6b we reported the results of this calculation in the wavelength range around the dipolar resonance used in the experiment (black dots, left-hand scale). The simulated absorbance spectrum of the samples (normalized to its maximum) is also reported (red curve, right-hand scale). The calculated LSPR absorbance peak is narrower than the experimental one, and this is probably due to the presence of defects in the fabricated nanostructures, that broaden the absorption band in the experimental samples. Nonetheless, a very good agreement between simulated and experimental results was reached. Particularly, the simulations show that the maximum nonlinear absorption response is observed at a wavelength slightly longer than the resonance peak, in agreement with the experimental results. Moreover, a change of sign from SA on resonance to RSA for shorter and longer wavelengths was demonstrated. Experimentally, such a change of sign was observed for wavelengths shorter than the resonance (Fig. 6a), while above the resonance it is still expected, but beyond the wavelength range accessible for the experiment, so it could not be observed. Anyhow, it is worth noticing that both the simulation and experimental results highlighted the existence of two spectral regions where NLA changes from saturable to induced absorption. Therefore, the NLA effect is expected to become negligible or very small at these wavelengths. Usually nonlinear absorption constitutes a deleterious effect for applications depending on nonlinear refraction, such as all-optical switching devices, where more than one device can be used in cascade³⁷. A regime where NLA is negligible is therefore very interesting for possible applications in all-optical switching, and it is found for wavelengths around 780 nm. This probably happens for wavelengths larger than 950 nm, but due to our detection system limitations, we could not prove it in our experiments.

Conclusions

The nonlinear absorption properties of ordered metallic Ag nanoprisms arrays embedded in silica and their irradiance and wavelength dependence have been studied by OA z-scan measurements with a wavelength-tunable ps laser beam. By setting the laser wavelength to the dipolar and quadrupolar plasmon resonances of the nanoarray, the gamut of nonlinear absorption phenomena has been observed and measured. The results show a remarkable reinforcement of the nonlinear absorption response at low intensities due to the great magnitude of the LSPR local field reinforcement. The quadrupolar and dipolar NLA responses are quite different and offer a great degree of freedom when designing devices based on effects such as SA and RSA. One of the most interesting results in this regard is the cancellation of the nonlinear response near the LSPR dipolar peak. This has been both observed experimentally and theoretically demonstrated by FEM electrodynamic simulations. Moreover, our results suggest that great consideration should be placed when deciding the manufacturing parameters of plasmonic materials for applications due to less than obvious wavelength-dependent nonlinear absorption effects, e.g. for maximum nonlinear response. The improved response of the investigated silver nanoprisms arrays, along with their wide gamut of nonlinear absorption characteristics, makes these nanosystems extremely attractive for photonic and plasmonic ultrafast devices.

References

1. Del Fatti, N. & Vallée, F. Ultrafast optical nonlinear properties of metal nanoparticles. *Applied Physics B: Lasers and Optics* **73**, 383–390, doi:10.1007/s003400100648 (2001).
2. Cotter, D. *et al.* Nonlinear Optics for High-Speed Digital Information Processing. *Science (New York, NY)* **286**, 1523–1528, doi:10.1126/science.286.5444.1523 (1999).
3. Ganeev, R. A. *Nonlinear Optical Properties of Materials*, vol. 174 of *Springer Series in Optical Sciences* (Springer Netherlands, Dordrecht, 2013).
4. Aubry, A. *et al.* Plasmonic light-harvesting devices over the whole visible spectrum. *Nano Letters* **10**, 2574–2579, doi:10.1021/nl101235d (2010).
5. Kauranen, M. & Zayats, A. V. Nonlinear plasmonics. *Nature Photonics* **6**, 737–748, doi:10.1038/nphoton.2012.244 (2012).
6. Haglund, R. *et al.* Nonlinear optical properties of metal-quantum-dot composites synthesized by ion implantation. *Nuclear Instruments and Methods in Physics Research Section B: Beam Interactions with Materials and Atoms* **91**, 493–504, doi:10.1016/0168-583X(94)96274-X (1994).
7. Cesca, T., Calvelli, P., Battaglin, G., Mazzoldi, P. & Mattei, G. Local-field enhancement effect on the nonlinear optical response of gold-silver nanoplanets. *Optics Express* **20**, 4537, doi:10.1364/OE.20.004537 (2012).
8. Haglund, R. F. Ion implantation as a tool in the synthesis of practical third-order nonlinear optical materials. *Materials Science and Engineering: A* **253**, 275–283, doi:10.1016/S0921-5093(98)00736-9 (1998).
9. Sánchez-Esquivel, H., Rangel-Rojo, R., Oviedo-Bandera, M. J. & Romo-Herrera, J. M. Third-order nonlinear response in cubic concave gold nanoparticles. *International Journal of Nanotechnology* **13**, 80, doi:10.1504/IJNT.2016.074525 (2016).
10. Novotny, L. & van Hulst, N. Antennas for light. *Nature Photonics* **5**, 83–90, doi:10.1038/nphoton.2010.237 (2011).
11. Wokaun, A. *et al.* Surface second-harmonic generation from metal island films and microlithographic structures. *Physical Review B* **24**, 849–856, doi:10.1103/PhysRevB.24.849 (1981).
12. Hulsteen, J. C. Nanosphere lithography: A materials general fabrication process for periodic particle array surfaces. *Journal of Vacuum Science & Technology A: Vacuum, Surfaces, and Films* **13**, 1553, doi:10.1116/1.579726 (1995).
13. Cesca, T. *et al.* Nonlinear absorption tuning by composition control in bimetallic plasmonic nanoprisms arrays. *Nanoscale* **7**, 12411–12418, doi:10.1039/C5NR01715G (2015).
14. Sheik-Bahae, M., Said, A. A., Wei, T. H., Hagan, D. J. & Stryland, E. W. V. Sensitive Measurements of Optical Nonlinearities Using a Single Beam. *IEEE Journal of Quantum Electronics* **26**, 760–769, doi:10.1109/3.53394 (1990).
15. Brigo, L. *et al.* Silver nanopyramid arrays coupled to functional hybrid films for LSPR based detection of aromatic hydrocarbons. *ACS Applied Materials and Interfaces* **6**, 7773–7781 (2014).
16. Perotto, G. *et al.* Nanopatterning of silica with mask-assisted ion implantation. *Nuclear Instruments and Methods in Physics Research, Section B: Beam Interactions with Materials and Atoms* **268**, 3211–3214, doi:10.1016/j.nimb.2010.05.091 (2010).
17. Rybczynski, J., Ebels, U. & Giersig, M. Large-scale, 2D arrays of magnetic nanoparticles. *Colloids and Surfaces A: Physicochemical and Engineering Aspects* **219**, 1–6, doi:10.1016/S0927-7757(03)00011-6 (2003).
18. Michieli, N., Kalinic, B., Scian, C., Cesca, T. & Mattei, G. Optimal geometric parameters of ordered arrays of nanoprisms for enhanced sensitivity in localized plasmon based sensors. *Biosensors and Bioelectronics* **65**, 346–353, doi:10.1016/j.bios.2014.10.064 (2015).

19. Khosrofan, J. M. & Garetz, B. A. Measurement of a Gaussian laser beam diameter through the direct inversion of knife-edge data. *Applied Optics* **22**, 3406, doi:10.1364/AO.22.003406 (1983).
20. Baffou, G. & Quidant, R. Thermo-plasmonics: Using metallic nanostructures as nano-sources of heat. *Laser & Photonics Reviews* **7**, 171–187, doi:10.1002/lpor.201200003 (2013).
21. Noguez, C. Surface Plasmons on Metal Nanoparticles: The Influence of Shape and Physical Environment. *Journal of Physical Chemistry C* **111**, 3806–3819, doi:10.1021/jp066539m (2007).
22. Hu, E. L., Brongersma, M. & Baca, A. Applications: Nanophotonics and Plasmonics. In *Nanotechnology Research Directions for Societal Needs in 2020*, 318–340, doi:10.1007/978-94-007-1168-10 (Springer Netherlands, Dordrecht, 2008).
23. Sherry, L. J., Jin, R., Mirkin, C. A., Schatz, G. C. & Van Duyne, R. P. Localized surface plasmon resonance spectroscopy of single silver triangular nanoprisms. *Nano Letters* **6**, 2060–2065, doi:10.1021/nl061286u (2006).
24. Felidj, N. *et al.* Multipolar surface plasmon peaks on gold nanotriangles. *The Journal of Chemical Physics* **128**, 094702, doi:10.1063/1.2839273 (2008).
25. Bohren, C. F. & Huffman, D. R. *Absorption & Scattering of Light by Small Particles*, 1 edn. (John Wiley, 1983).
26. Yu, B.-H., Zhang, D.-L., Li, Y.-B. & Tang, Q.-B. Nonlinear optical behaviors in a silver nanoparticle array at different wavelengths. *Chinese Physics B* **22**, 014212, doi:10.1088/1674-1056/22/1/014212 (2013).
27. Li, Z. *et al.* Ultrafast Third-Order Optical Nonlinearity in Au Triangular Nanoprism with Strong Dipole and Quadrupole Plasmon Resonance. *The Journal of Physical Chemistry C* **117**, 20127–20132, doi:10.1021/jp403308k (2013).
28. Rangel Rojo, R. *et al.* Spectrally resolved third-order nonlinearities in polydiacetylene microcrystals: influence of particle size. *Journal of the Optical Society of America B* **15**, 2937, doi:10.1364/JOSAB.15.002937. Note: We found that expression (7) in this reference has an error. Expression (1) in the present manuscript is the correct expression derived from the rate equations presented in the reference (1998).
29. Rangel-Rojo, R., Matsuda, H., Kasai, H. & Nakanishi, H. Irradiance dependence of the resonant nonlinearities in an organic material. *Journal of the Optical Society of America B* **17**, 1376, doi:10.1364/JOSAB.17.001376 (2000).
30. Khurgin, J. B. & Sun, G. *Landau Damping—The Ultimate Limit of Field Confinement and Enhancement in Plasmonic Structures* (Springer, 2017).
31. Michieli, N. *et al.* Oxidation effects on the SERS response of silver nanoprism arrays. *RSC Advances* 369–378, doi:10.1039/C6RA26307K (2017).
32. Debrus, S. *et al.* Z-scan determination of the third-order optical nonlinearity of gold:silica nanocomposites. *Journal of Applied Physics* **88**, 4469, doi:10.1063/1.1290260 (2000).
33. Ma, H. R., Xiao, R. F. & Sheng, P. Third-order optical nonlinearity enhancement through composite microstructures. *J. Opt. Soc. Am. B* **15**, 1022–1029, doi:10.1364/JOSAB.15.001022 (1998).
34. Ren, M. *et al.* Nanostructured plasmonic medium for terahertz bandwidth all-optical switching. *Advanced Materials* **23**, 5540–5544, doi:10.1002/adma.201103162 (2011).
35. Cesca, T. *et al.* Dichroic nonlinear absorption response of silver nanoprism arrays. *RSC Advances* **7**, 17741–17747, doi:10.1039/C7RA01722G (2017).
36. Smith, D. R., Vier, D. C. & Soukoulis, C. M. Electromagnetic parameter retrieval from inhomogeneous metamaterials. *Physical Review E* **71**, 1–11, doi:10.1103/PhysRevE.71.036617 (2005).
37. Stegeman, G. I. Material figures of merit and implications to all-optical waveguide switching. In *Nonlinear Optical Properties of Advanced Materials*, vol. 1852, 75–89, doi:10.1117/12.148458 (1993).

Acknowledgements

This work was supported by the Project of Major Importance Italy-Mexico MX14MO09 of the Italian Ministry of Foreign Affairs and International Cooperation (MAECI) and by CONACyT-Mexico through Grant No. 222485, Scholarship No. 221750 and mixed-funds grant 290842-359816. Financial support from PAPIIT-UNAM (México) through grant IN117116 is also acknowledged.

Author Contributions

R.R., T.C. conceived the experiments H.S., K.R., E.G., B.K., conducted the experiments. N.M. performed calculations. J.R., G.M. conceived theoretical support. All authors reviewed the manuscript.

Additional Information

Competing Interests: The authors declare that they have no competing interests.

Publisher's note: Springer Nature remains neutral with regard to jurisdictional claims in published maps and institutional affiliations.



Open Access This article is licensed under a Creative Commons Attribution 4.0 International License, which permits use, sharing, adaptation, distribution and reproduction in any medium or format, as long as you give appropriate credit to the original author(s) and the source, provide a link to the Creative Commons license, and indicate if changes were made. The images or other third party material in this article are included in the article's Creative Commons license, unless indicated otherwise in a credit line to the material. If material is not included in the article's Creative Commons license and your intended use is not permitted by statutory regulation or exceeds the permitted use, you will need to obtain permission directly from the copyright holder. To view a copy of this license, visit <http://creativecommons.org/licenses/by/4.0/>.

© The Author(s) 2017