

Design of a Closed-Loop Wireless Power Transfer System for an Implantable Drug Delivery Device

Original

Design of a Closed-Loop Wireless Power Transfer System for an Implantable Drug Delivery Device / Del Bono, Fabiana; Bontempi, Andrea; Dentis, Andrea; Di Trani, Nicola; Demarchi, Danilo; Grattoni, Alessandro; Ros, Paolo Motto. - In: IEEE SENSORS JOURNAL. - ISSN 1530-437X. - STAMPA. - (2023). [10.1109/JSEN.2023.3270521]

Availability:

This version is available at: 11583/2979046 since: 2023-06-03T10:12:24Z

Publisher:

IEEE

Published

DOI:10.1109/JSEN.2023.3270521

Terms of use:

This article is made available under terms and conditions as specified in the corresponding bibliographic description in the repository

Publisher copyright

IEEE postprint/Author's Accepted Manuscript

©2023 IEEE. Personal use of this material is permitted. Permission from IEEE must be obtained for all other uses, in any current or future media, including reprinting/republishing this material for advertising or promotional purposes, creating new collecting works, for resale or lists, or reuse of any copyrighted component of this work in other works.

(Article begins on next page)

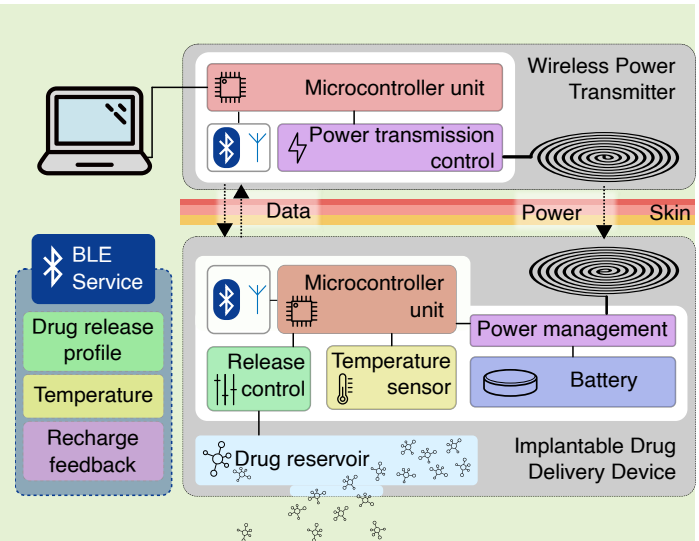
Design of a Closed-Loop Wireless Power Transfer System for an Implantable Drug Delivery Device

Fabiana Del Bono, *Student Member, IEEE*, Andrea Bontempi, *Student Member, IEEE*, Andrea Dentis, Nicola Di Trani, Danilo Demarchi, *Senior Member, IEEE*, Alessandro Grattoni, and Paolo Motto Ros, *Member, IEEE*

Abstract—Active Implantable Medical Devices (AIMDs) have seen a significant increase in popularity in recent years due to their ability to provide continuous therapy unobtrusively. One of the key challenges in developing next generation AIMDs is the design of a safe and reliable Wireless Power Transfer (WPT) system. Standard commercial WPT components are not optimized to deliver small amounts of power or to work with other than small air gaps. We developed a near-field resonant inductive coupling WPT system with closed-loop real-time control, based on the commercial off-the-shelf components and leveraging the already integrated wireless communication system. The system was used to recharge a secondary battery and power supply the Nanochannel Delivery System (nDS). We tested the system's robustness by varying the coil spacing to a maximum of 20 mm, and by misaligning the coils laterally and angularly up to 8 mm and 12°, respectively. We performed these tests by simulating battery charging from 2.8 V to 4.1 V and we tested four coils, from 6 mm to 19 mm in diameter, to evaluate the best trade-off between effectiveness and miniaturization.

Finally, we recharged the selected battery for two distances, 2.5 mm and 6.5 mm. The results show that the 17 mm and 19 mm coils have the highest peak efficiencies of 31.3 % and 32.3 % (26 % and 26.3 % on average), respectively, and provide a complete and reliable battery recharge in less than 5 hours while keeping the receiver coil temperature within 2 °C.

Index Terms—Active Implantable Medical Devices (AIMDs), Nanochannel Delivery System (nDS), Near-field Resonant Inductive Coupling (NRIC), Wireless Power Transfer (WPT)



I. INTRODUCTION

Active Implantable Medical Devices (AIMDs) are surgically implanted within the human body to provide continuous or intermittent therapy. AIMDs treat various medical conditions, including chronic diseases that develop gradually and can be managed but are not always completely cured. Some examples of chronic pathologies include diabetes, heart disease, asthma,

and kidney disease. These can cause long-term complications and increase the risk of premature death. Prevention and early treatment are essential in effectively managing chronic diseases. AIMDs can help to improve patient's quality of life and prevent long-term complications. However, specific challenges must be overcome to fully exploit these systems' potential. One of the most critical considerations in the design of implantable systems is represented by the volume constraints [1], [2]. This is because device discreteness and patient acceptability are of utmost importance in this field, much more than for wearable IoT devices [3], [4]. The next generation of advanced AIMDs aims to address these challenges by minimizing the overall size and power consumption, while also improving efficacy and safety [5]. This is a critical goal as it will allow for the devices to be more easily accepted by patients and increase their willingness to use them. Furthermore, the ultimate goal is to include connectivity in these devices,

Submitted for review on February 1st, 2023.

An earlier version of this paper was presented at the IEEE SENSORS 2022 Conference and was published in its Proceedings (DOI:10.1109/SENSORS52175.2022.9967268).

Fabiana Del Bono, Andrea Bontempi, Andrea Dentis, Danilo Demarchi and Paolo Motto Ros are with the Department of Electronics and Telecommunications (DET) of Politecnico di Torino, 10129 Torino (TO), Italy (e-mails: {fabiana.delbono; andrea.bontempi; danilo.demarchi; paolo.mottoros}@polito.it, andrea.dentis@studenti.polito.it).

Nicola Di Trani and Alessandro Grattoni are with the Department of Nanomedicine of the Houston Methodist Research Institute, Houston, TX 77005 USA. (e-mails: {nditrani, agrattoni}@houstonmethodist.org).

which will allow to exchange information and personalize therapy [6], [7], thus improving their overall effectiveness. Primary batteries are one of the most common power sources used in AIMDs. They are widely used due to their ability to provide a stable and reliable power source for years, however, one of their major drawbacks is their large size. They take up a significant amount of space within the device, which can limit its overall design and functionality. On the other hand, secondary batteries, such as lithium-ion, can be used with a smaller size and capacity than primary cells: they will have a shorter life but they can be recharged periodically. Wireless Power Transfer (WPT) systems allow power to be delivered without the use of transcutaneous cables [8]. In the literature, different WPT methods such as inductive, near-field resonant inductive coupling (NRIC), near-resonant capacitive coupling (NCC), solar and radio frequency are presented [1], [9]–[11]. NRIC devices enable the transmission of power ranging from tens to hundreds of milliwatts, which is compatible with secondary battery charging. Having with an operational range in the order of the thickness of the skin, they are compatible with the power requirements and, in general, with the application scenario of small AIMDs. Indeed, this established technology has already powered a few commercial AIMDs [12]. As a result, it can be integrated into experimental subcutaneous implants that use receiving coils with a diameter of less than 2 cm to recharge secondary batteries. Overheating is a common problem in WPT systems, particularly in NRIC systems: according to European Standard EN45502-1 [13], an implanted device's temperature must not rise more than 2 °C over body temperature. The overheating is mainly due to the poor power transmission efficiency (PTE) and the low coil quality factor. Several factors, such as load variation, misalignment of the coils, and the distance between the coils, influence the PTE [10], [14]. Poor PTE means that more power is lost as heat, which can cause the system to overheat. This paper presents the design of a NRIC WPT system based on Commercial Off-The-Shelf (COTS) components. The system is designed for charging secondary batteries and powering the Nanochannel Delivery System (nDS), a remotely controlled implantable platform for tunable drug delivery that features Bluetooth Low Energy (BLE) connectivity [7], [15]. The integration of a rechargeable battery combined with a WPT system would enable the use of nDS in a pre-clinical setting targeting chronic experiments. Such a setting typically involves animal models, and is focused on safety and efficacy/efficiency, thereby paving the way for long-term in-vivo studies. In particular, the overall device size must not increase significantly, while recharge must occur safely, reliably, in short time, and respecting the regulations in term of biocompatibility, especially on overheating. The power transfer system under consideration must be designed to accommodate both near-static (long-term, slow, rare) and dynamic misalignments (short-term, quite fast, frequent, due to the animal's movement), in order to ensure an optimal power transfer for device charging. Indeed, the physical distance/alignment between the transmitting and the receiving coils, as well as the tissues in between, may greatly affect the resulting electrical characteristics of the inductive link and can only be adjusted

at implantation time. Therefore, a greater degree of robustness has to be accounted for at the design stage. The focus of this work is to investigate, given the mentioned requirements and constraints, the trade-offs among coil miniaturization, overall system electrical performance, and coil temperature, all of which impact on the overall engineering of the final device and its suitability for different biomedical application scenarios. In order to improve the efficiency, robustness, and reliability of the wireless powering and charging system, we introduce a closed-loop control system leveraging the already available BLE link, with the ultimate goal of reducing dissipation and minimizing overheating. This paper extends our previous work presented in [16] as a proof-of-concept with preliminary measurements. Here, we discuss in depth the behavior of the closed-loop WPT system using four different coils to effectively explore the pros and cons of different designs, with the crucial trade-off between physical size and reliability across different and non-optimal operating conditions. In order to further stress the robustness of the different solutions, we extended the range of the critical test conditions as well.

Section II presents and describes the nDS device and the WPT material. Section III presents the proposed closed-loop system and gives a description of the tests performed to validate it. Section IV describes the results, discussed in section V. Section VI presents the concluding remarks.

II. MATERIALS

A. nDS system

The nDS is an AIMD for controlled drug administration, intended for the treatment of chronic pathologies [7], [15], [17]. It is based on a silicon nanofluidic membrane that modulates its permeability to the drug through the application of an electric potential, exploiting the electrochemical interaction between the drug molecules and the charged walls of the nanochannels. The nDS membrane allows for sustained systemic release of therapeutic agents, achieving a zero-order release kinetics that can be tuned to keep the plasma concentration of the drug in its therapeutic window, avoiding inefficacy and toxic effects [7]. Unlike commercial drug delivery devices, based on mechanical pumping and therefore bulky and power wasting, nDS would allow to extend controlled treatment to categories of patients that currently rely on traditional administration, with the advantage of improved medication adherence and reduced healthcare costs [18]. The current version of the device is shown in Fig. 1.

The PCB is sized 20 mm × 12 mm, and includes a low-power wireless microcontroller unit (MCU), a digital temperature sensor for monitoring the surrounding environment, a membrane voltage management circuit based on a Digital to Analog Converter (DAC) and a 2.4 GHz antenna. The MCU allows to remotely control the device using the BLE protocol. Membrane voltage can be set in a range between −3 V and 3 V, which allows to efficiently tune drug release as previously demonstrated [7], [15], [17]. Temperature and battery level data are periodically monitored. Power consumption is kept low thanks to system-level low-power techniques, other than the choice of integrating low-power components. In addition,

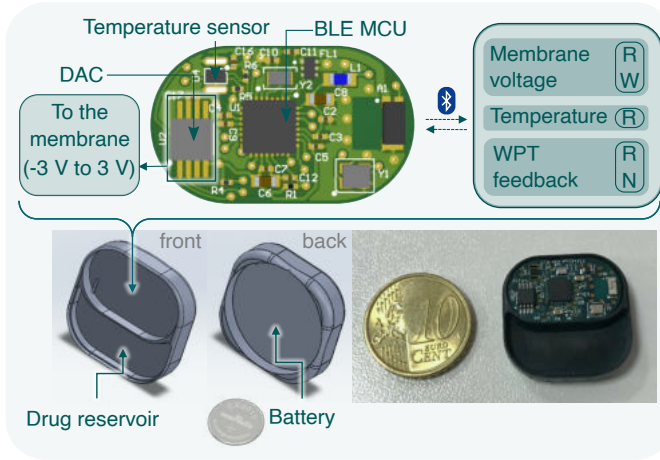


Fig. 1: nDS Drug Delivery Device. The system is composed of a drug reservoir, closed by a biocompatible cap embedding the nanofluidic membrane (not represented), and a PCB powered by a battery. The PCB includes a BLE microcontroller unit, a temperature sensor and the Digital-to-Analog converter for membrane control. BLE connectivity allows to read/write membrane voltage, read internal temperature and read/notify the feedback for WPT.

the MCU firmware has been developed to minimise power consumption by reducing as much as possible the radio-on and active-mode time. While settings like membrane voltage and reading intervals can only be changed during a BLE connection, read-only information is available in the advertising data. Thanks to these design choices, the devices proved 21 days of in-vivo full operation with a 90 mAh battery (CR2016) [7]. The integration of power transmission control within the BLE services of this device allows to close the loop with zero impact on the device size and power consumption, and it allows, in this specific application, to bypass the need for data modulation on top of the inductive power link.

B. NRIC WPT system

The WPT system consists of an external transmitter and an internal receiver to be integrated into the implantable drug delivery system. The receiver is the most critical component, as it must comply with the constraints imposed by implantable devices. Therefore, choosing the smallest footprint IC that dissipates the most negligible power is necessary to not overheat the surrounding tissues. The LTC4124 [19] is a complete wireless power receiver with an integrated lithium battery charging system, occupying only a 4 mm² area and requiring only two external passive components compared to similar solutions. The other critical component of the receiver is the coil; different coils were considered and tested for this study, all summarized in Table I. The dimensions range between 6 mm and 19 mm in diameter, with the objective of identifying the most suited one for the intended application. Physical and biomedical constraints should be taken into account for the choice, given the nDS system physical and electrical requirements. The first two coils were chosen to be more compact in size, aiming to minimize the impact of the

WPT system on the volume or, broadly speaking, the physical structure of the device. On the other hand, the other two coils were chosen larger for their reported electrical characteristics, possibly leading to a more efficient and reliable WPT.

The LTC4125 [20] is an auto-resonant wireless power transmitter compatible with the receiver. There are four possible types of resonant coupling: SS, SP, PS, and PP [21]. The first letter refers to the compensation in the TX (series or parallel), while the second letter denotes the resonant type in the receiver. SS and SP typologies deliver the same amount of power, but the first typology better works with high currents and low voltages, while the second one, vice versa, with high voltages and low currents. Choosing the SP typology improves the efficiency of the rectifier in the receiver when it operates at high voltage, and is therefore the most suitable for implantable devices [21]. The LC tank of the TX consists of the coil and two parallel capacitors in series. The coil (Würth Electronic, 760308101104) has an inductance of 6.8 μ H and a diameter of 20.8 mm. The quality factor measured using the Agilent 4294A impedance analyzer is 57.1 (60.9 from the datasheet). The NRIC WPT system is tuned to a resonance frequency of 200 kHz.

III. METHODS

A. Closed-loop control

The LTC4125 IC plays a key role in optimizing WPT. We tested two power transmission approaches, one based on the integrated load sensing system and one on an effective closed-loop control system. In the first case, the LTC4125 executes a stepwise linear ramp of transmitted power at regular intervals to detect the presence or absence of a valid receiver. By measuring the magnitude of the LC tank voltage at each step, it can identify the optimal power transfer when a substantial change in peak tank voltage from one step to the next exceeds the hardware-set threshold. However, as indicated in the results section, the load sensing control system results may be inconsistent and unreliable in different coil spatial conditions. Therefore, we introduced an effective closed-loop control system, external to the LTC4125, disabling the integrated load sensing control. The goal of this system is to dynamically optimize power transmission under different load conditions, which can vary depending on the spatial arrangement of the TX and RX. The closed-loop control shown in Fig. 2, split between TX and RX each with an MCU connected via BLE, is

TABLE I: RX Coils employed for the tests. Q measured with Agilent 4294A impedance analyzer

Diameter (mm)	Thickness (mm)	Inductance (μ H)	Q @200 kHz	Q measured @200 kHz
6 ^a	3.3	8	N/A	15.45
12 ^b	0.34	8.32	N/A	10.35
17 ^c	0.82	12.6	25	27.99
19 ^d	0.8	26	28	30.59

^aSunlord, MQQRC060630S8R0

^bTDK, WR121210-27M8-ID

^cWürth Electronic, 760308101220

^dWürth Electronic, 760308101214

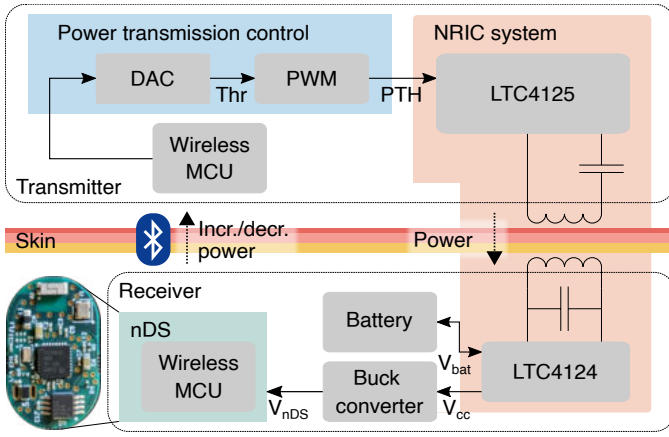


Fig. 2: Overview of the closed-loop NRIC WPT system used to test secondary battery charging and power nDS.

therefore used to enhance the performance of the WPT system in real-time. The control algorithm and hardware are designed as follows.

1) *Algorithm*: In the first phase of recharge the RX MCU monitors the condition (1)

$$V_{CC} > 3.6 \text{ V} \quad (1)$$

where V_{CC} is the rectified voltage on the receiver. This condition is fundamental to guarantee the correct working of the receiver. Unless this condition is satisfied, the MCU will request the transmitter to increase the transmission of power. Once the first condition is met, the RX MCU periodically checks condition (2)

$$\begin{cases} V_{CC} - V_{BAT} < 300 \text{ mV}, & \text{Thr} \uparrow \\ 300 \text{ mV} \leq V_{CC} - V_{BAT} \leq 700 \text{ mV}, & \text{Thr} = \\ V_{CC} - V_{BAT} > 700 \text{ mV}, & \text{Thr} \downarrow \end{cases} \quad (2)$$

where V_{BAT} is the battery voltage. This condition is necessary to ensure proper battery charging, keeping the V_{CC} voltage higher than the battery voltage. According to condition (2), the RX MCU sends a notification via BLE whether to maintain, decrease or increase the transmitted power. This whole task (conditions check and notification) is executed by the receiver every 2 s.

2) *Hardware*: The simplified electrical circuit schematic of the TX control system and a representation of closed-loop control are illustrated in Fig. 3.

The TX MCU increases, decreases, or maintains the TLV7011 comparator threshold (Thr) by a step size of 2.5 mV, according to the notification received via BLE. The capacitor is connected to the PTH pin of the LTC4125, and it is also feedback to the input of the comparator. The value of PTH is related to the power transmission; in fact, it adjusts the duty cycle of the square wave on the TX LC tank. The proposed NRIC WPT closed-loop system operates by charging and discharging the capacitor connected to the PTH pin [22]. The PTHM pin drives the charging process. The voltage on the PTHM defines the integrated DAC output ($iPTH$) (3) with an internal pull-up that continuously charges the capacitor [20].

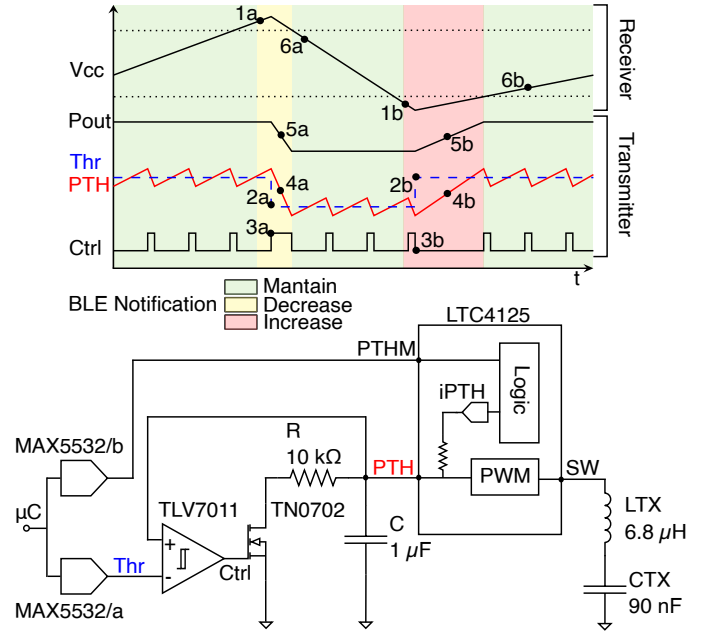


Fig. 3: (top) Representation of the control system's operation when the V_{CC} RX voltage increases/decreases (a/b): (1a/b) measurement of V_{CC} RX voltage and BLE notification; (2a/b) change of Thr value; (3a/b) control activation; (4a/b) PTH voltage variation; (5a/b) power transmission variation; (6a/b) V_{CC} voltage returns within the range. (bottom) The simplified electrical circuit schematic of the TX control system.

$$iPTH = \frac{0.576}{0.24} \cdot \frac{PTHM}{V_{DD}} \quad (3)$$

If the voltage on the PTH exceeds the set threshold, the comparator output switches to logic high, discharging the capacitor. When the transmitted power is to be kept stable, PTH oscillates around the threshold. The $iPTH$ value also defines the maximum transmissible power. To prevent the threshold set by the MCU from exceeding $iPTH$, the MCU updates the PTHM value each time the threshold is changed (4).

$$PTHM = 2 \cdot Thr + 200 \text{ mV} \quad (4)$$

The LTC4125 maintains however its security mechanisms, specifically, the feature of disconnecting when the temperature on the coil exceeds 42 °C.

B. System efficiency characterisation

Several factors impact the operation of an NRIC WPT system and, thus, energy transfer efficiency. One key factor is the distance between the transmitter and receiver, which impacts the received power and the system's efficiency. Additionally, the orientation, shape, size, and obstacles between the transmitter and receiver can impact the performance of the NRIC WPT system. It is crucial to consider all these factors to achieve maximum energy transfer. We characterized the NRIC WPT closed-loop versus load sensing control by varying the distance between the TX and RX coils and varying the load (battery voltage). The distances tested ranged from

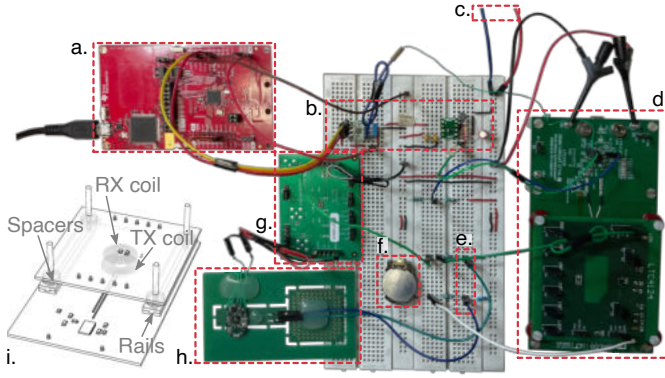


Fig. 4: Test bench setup for the recharge experiments, with main blocks highlighted: (a) TX MCU; (b) control system; (c) TX power supply; (d) coil and ICs support; (e) nDS ADC input for V_{CC} and V_{BAT} ; (f) LIR2025 battery; (g) buck converter; (h) modified nDS PCB fixed on a support; (i) detailed view of the coil and ICs support. The rails and the spacers were used for testing coil separation and misalignments. Power supply and measurement instrumentation not shown for simplicity.

2 mm to 20 mm with a step size of $1 \text{ mm} \pm 0.5 \text{ mm}$. We used a simulated battery by connecting a power supply to a 20Ω resistor connected to the battery pin of the RX system. We used the same test bench to compare the closed-loop system with different receiver coils reported in Table I. We evaluated the robustness of the NRIC WPT system by investigating the effects of lateral misalignments ranging from 0 mm to 8 mm with increments of 1 mm and angular misalignments ranging from 0° to 12° with increments of 2° . We performed the experiments with a fixed coil spacing of $6.5 \text{ mm} \pm 0.5 \text{ mm}$. Considering that the device is intended for subcutaneous implantation, a test was performed using animal tissue (chicken breast) interposed between the coils [23], [24]. For each test, V_{BAT} is varied from 2.8 V to 4.1 V with step size of 0.1 V. This allowed to test efficiency for all the voltage in the constant current (CC) phase.

C. Battery charging tests

We performed charging tests using a coin battery LIR2025 with a capacity of 25 mAh and a charging current of 10 mA. The battery has a size and capacity compatible with the requirements of nDS. Fig. 4 depicts the experimental setup for the recharge tests, with emphasis on the main parts of the system, to showcase the relative positioning of circuit components. We conducted the tests with two different coil distances, 2.5 mm and 6.5 mm, and tested 12 mm, 17 mm, and 19 mm RX coils. On the transmitter, to verify the correct performance of the control algorithm, we monitored the PTH voltage and the temperature of the TX coil in real time using NTC (Murata, FTN55XH103FD4B). At the same time, on the receiver, we measured the battery voltage (V_{BAT}), the V_{CC} , the charging current (I_{BAT}), and the temperature of the RX coil using NTC (Semitec, 103JT-025). The overall

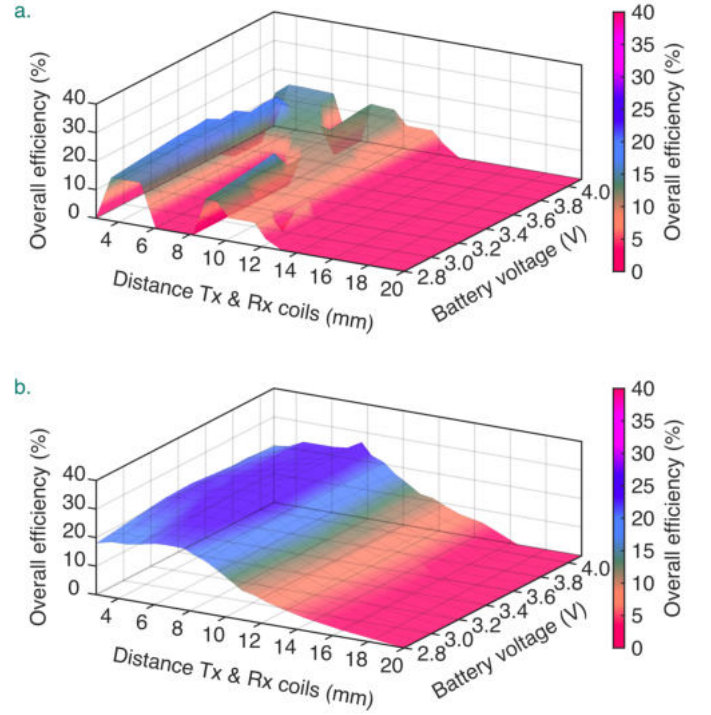


Fig. 5: Comparison of (a) load sensing and (b) closed-loop NRIC WPT system efficiency. The test is conducted with 17 mm coil. In (a), 0% efficiency denotes that TX is unable to find the RX and consequently the power is not transmitted. Test conducted in air, charging current 10 mA, coil distance 2 mm to 20 mm, simulated battery.

efficiency (5) is calculated as

$$\eta = \eta_{TX} \cdot \eta_{link} \cdot \eta_{RX} = (P_{BAT} + P_{nDS}) / P_{TX} \quad (5)$$

where P_{BAT} is the power required by the battery given by $V_{BAT} \cdot I_{BAT}$, P_{nDS} is the power required by nDS, powered at 3 V through a buck converter and an average current of 2 mA with the BLE connection active, and P_{TX} is the power supply of the transmitter. These tests aim to correlate recharge efficiency with coil temperature, focusing on the RX coil.

IV. RESULTS

A. Closed-loop efficiency characterisation

1) *Load sensing vs. Closed-loop*: in Fig. 5, we report the results on transmission efficiency, tested on 17 mm coil, in the case of load sensing control recharge and controlled recharge with closed-loop. The load sensing control in Fig. 5a has inconsistent (and unreliable) performance, resulting in no received power (0% efficiency) when the transmitter (TX) cannot detect the receiver. However, closed-loop control in Fig. 5b ensures successful and reliable power transfer, with no faults on the TX side. The efficiency of the system increases as the battery voltage increases and is highest for distances that match the thickness of skin. This outcome confirmed the hypothesis of the closed-loop as a possible solution to the reliability and continuity issues in power transfer, and has

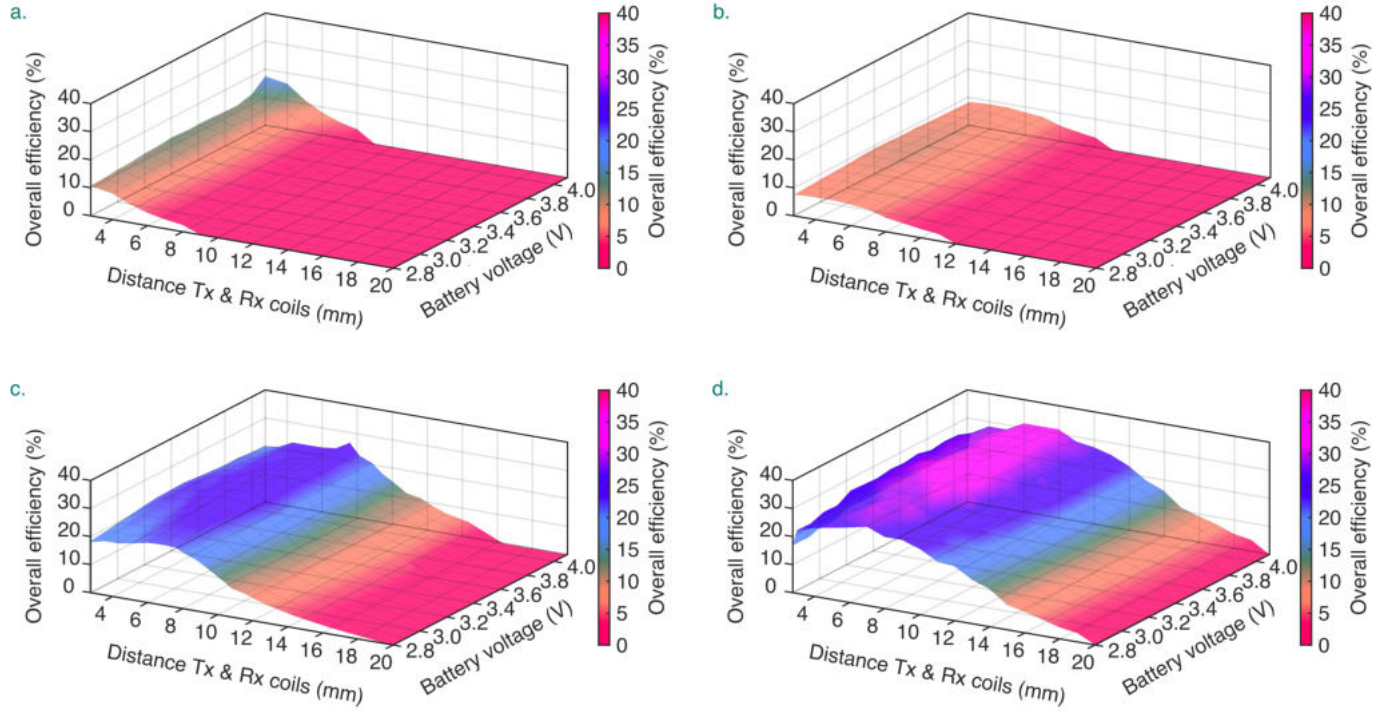


Fig. 6: NRIC WPT closed-loop system efficiency comparison using 4 different coils on the receiver: (a) coil 6 mm; (b) coil 12 mm; (c) coil 17 mm; (d) coil 19 mm. Test conducted in air, charging current 10 mA, coil distance 2 mm to 20 mm, simulated battery.

prompted us to further examine the utilization of various coils in order to address the requirements of biocompatibility and miniaturization.

2) Voltage-Distance-efficiency: the results of the coil characterization with respect to distance are reported in Fig. 6. In the tests on distance with the 6 mm coil (Fig. 6a), we were able to achieve a maximum distance of 9 mm before experiencing issues such as high power levels and consequent overheating of the transmitter, leading to the interruption of the power transmission. The peak efficiency is around 13 % at 2 mm. With the 12 mm coil (Fig. 6b), we were able to reach a maximum distance of 11 mm before encountering similar problems. The peak efficiency is approximately 9 % at 5 mm. Although the 12 mm coil shows lower efficiencies than the 6 mm one, its performance is more consistent on distance. The 17 mm and 19 mm coils reach a maximum distance of 14 mm and 19 mm, respectively, before facing the same challenges (Fig. 6c-d). The former shows a peak efficiency of 26 %, the latter of 35 %, both at 7 mm. Taking into account factors such as skin thickness, encapsulation, future transmitter housing, and PCB thickness, we chose a distance of $6.5 \text{ mm} \pm 0.5 \text{ mm}$ as a common performance metric for the system. The efficiencies reported at that distance are 5 %, 8.5 %, 25.7 % and 31 % for 6 mm, 12 mm, 17 mm and 19 mm coils, respectively.

3) Misalignments: The test results for misalignment at 6.5 mm distance are shown in Fig. 7a-b. Lateral misalignments are plotted in (a), angular misalignments in (b). For the 6 mm coil, there is a relatively constant efficiency of 5 % until

5 mm lateral misplacement, at which point the system begins to shut down due to overheating of the TX. On angular misalignment, efficiency begins to decrease significantly at 2° and the system shuts down at 4° . For the 12 mm coil, the efficiency is fairly consistent at 8 % until 6 mm, and the system does not shut down within the analysed range. Tests on angles show that efficiency is relatively constant at 8 % until 4° , then lowers, with a drop to zero at 10° . The 17 mm coil maintains a practically constant efficiency of around 27 %, it begins to slightly decrease at 8 mm. On angular misalignments, the coil maintains a practically constant efficiency up to 4° of around 27 %, and it begins to decrease significantly at 10° where efficiencies lower than 15 % are observed. The 19 mm coil has a relatively constant efficiency of 30 % until 6 mm of lateral displacement, and the system does not shut down in the analysed range, maintaining an efficiency of 17 % at 8 mm. Right above that distance, although there is a significant reduction in efficiency, it is very unlikely to have an abrupt drop in efficiency causing an unexpected shut down. The results for angular misalignment show a relatively constant efficiency of 30 % until 10° . Again, no shut down was observed within 12° , while still maintaining an efficiency of 23 %.

4) Biological tissue: In Fig. 7c, we report the results obtained using biological tissue (chicken breast) as a medium interposed between TX and RX coils. We used the 17 mm coil, and the chicken breast as a phantom. A slight decrease in efficiency is observed, however, we may not consider it

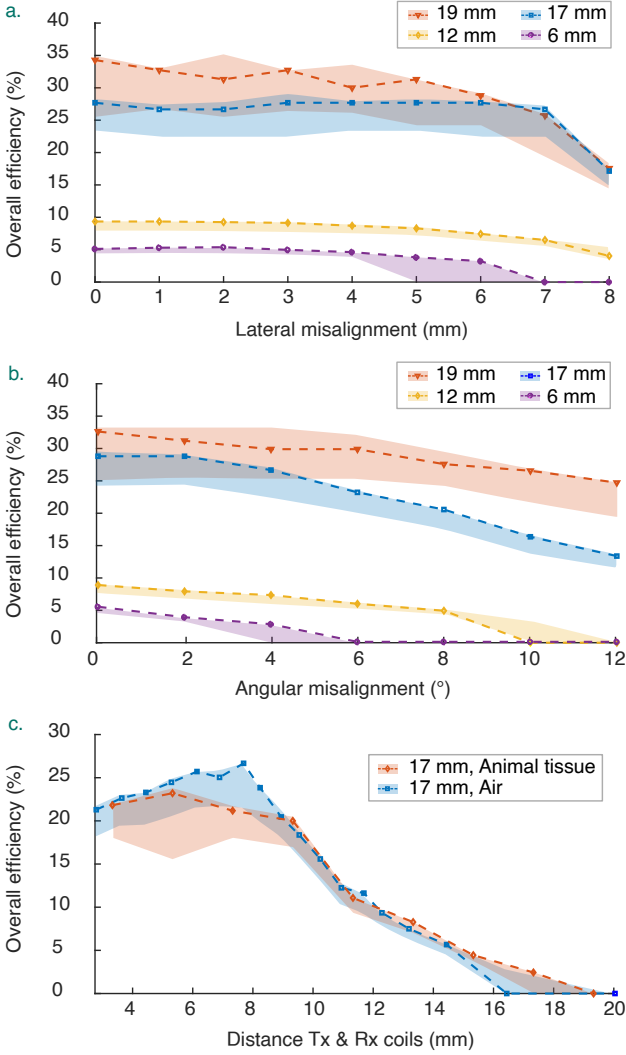


Fig. 7: Comparison of the overall efficiency of the NRIC WPT system under non-optimal coupling conditions. (a) Lateral misalignment up to 8 mm, 4 coils tested. (b) Angular misalignment up to 12°, 4 coils tested. (c) Animal tissue (chicken breast) between coils, 17 mm coil tested. Dashed lines indicate efficiency measured with a simulated battery at 3.6 V. The bands indicate the change in efficiency with varying simulated battery loads from 2.8 V to 4.1 V.

significant.

B. Battery charging performance

1) Charging process: The battery recharge tests were conducted utilizing a LIR2025 battery, which was selected as the optimal balance between capacity, charging time, duration between recharges, and physical dimensions. A three-stage process can be identified in the charging procedure, comprising of pre-charge, CC and constant voltage (CV) phases (Fig. 8). The pre-charge phase, in which the current supplied to the battery is below 10 mA, prevents damage to excessively discharged batteries. Once the voltage surpasses 2.8 V, the current gradually increases from 1 mA to 10 mA. The CC phase starts once the current reaches this final value, in which

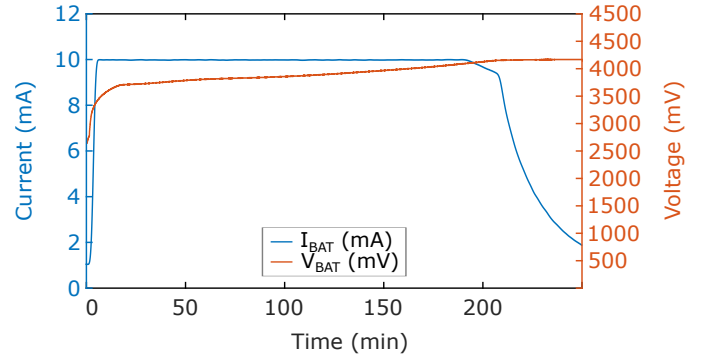


Fig. 8: Battery charging (pre-charge, CC and CV phase) LIR2025 at 10 mA with the closed-loop system. Coil distance of 6.5 mm. RX coil 17 mm.

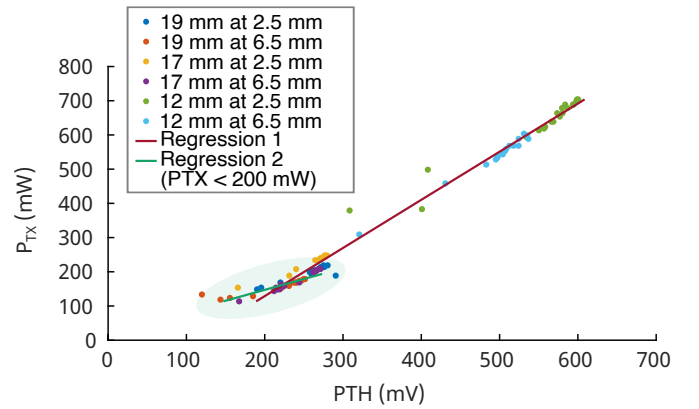


Fig. 9: Closed-loop PTH compared to P_{TX} . Data are collected during recharges of the LIR2025 battery using 12, 17, and 19 mm coils and TX and RX spacings from 2.5 mm to 6.5 mm. To show the correlation between PTH and P_{TX} , two regression lines are traced: the first one (Regression 1) is obtained using all the points in the chart; the second one (Regression 2) considering points with P_{TX} below 200 mW.

the current is maintained constant, and the battery voltage increases, reaching 4.2 V. At this point, the current begins to decrease and the charging process can be terminated. With this method, complete and safe charging of the LIR2025 battery is achieved within 250 min from the beginning of the recharge process. Fig. 9 shows the relationship between PTH and P_{TX} , illustrating how the closed-loop system adjusts the transmitted power according to the different loads.

The results obtained from the continuous monitoring of recharge tests, which were carried out using the nDS connection, are presented in Table II. For both the coil distances of 2.5 mm and 6.5 mm we report the interposed medium, the power required by the transmitter and the receiver, the average and maximum efficiency, the maximum value of PTH and the maximum temperature variation on the TX and RX coil.

V. DISCUSSION

The coil tests allow to identify the potential of their future use in battery charging in the experimental conditions of an

TABLE II: Closed-loop system performance during LIR2025 charging tests at 10 mA, measured at different distances d between the TX and the RX.

d (mm)	Coil (mm)	Interposed medium	P_{TX} max. (mW)	P_{Load}^{**} max. (mW)	η_{AVG} (%)	η_{MAX} (%)	V_{THR} max. (mV)	ΔT_{TX} max. (°C)	ΔT_{RX} max. (°C)
2.5	12	Animal tissue	604	51	6.6	9.5	571	14.7	18.7
2.5	12	0.9% Saline	505	46	6.6	9.7	523	5.3	9.3
2.5	12	Air	704	52	5.8	8.1	599	16.3	36.1
2.5	17*	Air	250	64.9	23.9	26.3	279.0	2.5	2.1
2.5	19	Air	220	52	21.1	24.3	292	3.5	4.9
6.5	12	Air	604	52	7.6	9.5	534	9.5	21.2
6.5	17*	Air	210	65.4	26.0	31.3	271	2.1	1.4
6.5	19	Air	180	56	26.3	32.3	251	1.4	1.7

* Results reported from [16]. ΔT_{RX} measured with thermal camera.

** P_{Load} is obtained by the sum of the power required by the battery (P_{BAT}) and that required by nDS (P_{nDS}).

in-vivo recharge. For example, while the 6 mm coil performed better in terms of maximum efficiency and had smaller dimensions compared to the 12 mm coil, it did not move to the recharge test phase due to its inability to ensure robustness under possible in-vivo conditions, where movements of the animal inevitably lead to misalignments. This is a proof that efficiency under a specific condition alone is not a sufficient metric for determining the quality of the system in applications where strong robustness and reliability are required under varying conditions. In terms of performance, the 19 mm coil proves to be the best, both considering efficiency and its ability to withstand non-optimal operating conditions, showing the best performance for both angular and lateral misalignment. The 6 mm coil, on the other hand, is the worst performer with a low efficiency (5 %) on the useful distance and it is too susceptible to changes in coupling conditions, despite a peak of 13 % at 2 mm distance. The 12 mm coil, still advantageous to fulfill miniaturization requirements, is not discarded because of its higher efficiency on the useful distance (8.5 %) and more robust to misalignments than the 6 mm one. Test results show that increasing the diameter sensitively improves the efficiency of the system. At the same time, the efficiency of the system is maximized at a specific distance; by reducing the gap, the efficiency will not improve, despite the corresponding increase in the coupling factor. Indeed, here (see 5) we are including the term η_{TX} related to the TX as well, and this can negatively impact on the overall efficiency.

The results of the battery charging tests demonstrate the smooth and consistent nature of the charging process, with no instances of malfunction or interruption, in accordance with the expected CC-CV charging profile [25] as shown in Fig. 8. At the same time, nDS shows complete and correct functionality, maintaining the BLE link with the transmitter, allowing to access the service, and keeping notification of threshold data active. As expected, in comparison to the 19 mm coil, the 12 mm coil requires a higher transmitted power to charge the battery, as evidenced by evaluating PTH, which is nearly double that required by the 19 mm. The increase in power also results in an increase in power dissipated by the coils, leading to an unacceptable increase in temperature for both the transmitter and receiver, exceeding 60°C in air. The assessment of thermal performance in the WPT system is a crucial aspect in biomedical applications, which is often overlooked and challenging to accomplish [26]. While not causing

TABLE III: Comparison of coils with respect to the device requirements.

Coil (mm)	Size	Robustness	Efficiency	ΔT
6	++	-	-	/
12	++	+	-	-
17	+	++	+	++
19	+	++	++	++

Symbols used and meaning: (-) bad, (+) good, (++) very good

a significant performance decrease, tissue interposition has been observed to assist in regulating the temperature increase through its water content and its thermal capacitance. The results obtained with the interposition of saline solution further prove that media with a high content of water play a vital role in regulating the temperature increase. The mitigation effect of tissue on overheating is therefore expected to be enhanced in environments characterized by blood perfusion [27]. The presented system demonstrates highly favorable outcomes, as evidenced by the data presented in Table II; the 17 mm coil is the smallest one that guarantees proper charging without overheating, obtaining the best performance together with the 19 mm one, as summarized in Table III.

In order to better understand how the control algorithm effectively adapts the transmitted power, in Fig. 9 a set of operating points during a charging process are reported. They are grouped by RX coil size and TX/RX distance, thereby each set represents a different setup and/or operating condition, or, from an electrical perspective, different load conditions. Given a set of points, their dispersion shows, broadly speaking, how much the closed loop has to adapt in real-time the transmitted power P_{TX} by setting PTH; in particular the dispersion at low powers (below 200 mW, with PTH varying from 100 mV to 250 mV) is more pronounced than at higher power levels, where presumably the TX IC has the optimal working point [20]. By looking at the possible relations between these two quantities (highlighted by regression lines in Fig. 9), it is easy to spot different sensitivities at different power levels, further confirming the need for an adaptive control for an efficient and reliable WPT with changing (and not precisely predictable) load conditions.

Table IV compares the performance of our work with other NRIC WPT systems that have been reported in the literature for biomedical applications. Considering efficiency as the most widespread performance metric, our system is comparable to

TABLE IV: Comparison with similar NRIC solutions for AIMDs, ordered by decreasing TX power.

Reference	P_{TX} (W)	freq. (kHz)	\varnothing_{TX} (mm)	\varnothing_{RX} (mm)	d (mm)	η (%)	Application
[28]	48	50	N/A	N/A	10	72	Artificial heart
	12	50	N/A	N/A	10	62	
[29]	10–60	120	N/A	N/A	10	66–78	Artificial heart
[30]	1	206	74	71.2	11.6	12.5	General
[31]	0.810	125	22	11	10	29.9	Neural
This work	0.210	200	21	19	6.5	32.3	Drug delivery
[32]	0.137	700	60	20	30	36	Orthopaedic

other solutions with similar operating frequency and levels of transmitted power. Sensitively higher efficiencies are only found for transmitted powers of the order of tens of watts. The decrease of the PTE resulting from lower levels of transmitted power is systematic in NRIC systems, found also in higher power applications [28], as well as the reduction in performance in response to load variations with respect to the optimal conditions for which the WPT was designed [32]. This further remarks the need for an approach that is robust with respect to the variation of configuration when a static, fixed setup can not be guaranteed, as in case of long-term chronic studies with implantable devices.

VI. CONCLUSIONS

In this study, a closed-loop NRIC WPT system composed of commercially available components was developed and tested in conjunction with an experimental AIMD for drug-delivery applications. The method used allows the advantageous use of COTS parts respecting thermal and geometrical constraints. The results of the experiments demonstrate the stability of power transfer, with minimal overheating and satisfactory efficiency with the coils of 17 mm and 19 mm. Table III summarizes the comparison of coils concerning the requirements of the system. The findings of this research are promising in the context of long-term implantation for chronic animal studies [17], [33]. The recharge capability of a 25 mAh battery allows for an estimated activity of the drug delivery system for a minimum of 5 days, proportionally to what is reported in [7] for the 90 mAh primary cell (CR2016). The selected battery is capable of up to 500 recharge cycles, yielding a projected chronic duration of greater than 6 years.

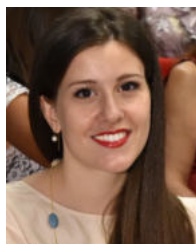
In future work, the integration of the WPT system into the nDS printed circuit board will be developed, and therefore the whole device re-engineered from a system perspective. Furthermore, the battery's actual longevity will be evaluated through examination of a recharge and discharge process of the new nDS device.

REFERENCES

- [1] K. Agarwal, R. Jegadeesan, Y.-X. Guo, and N. V. Thakor, "Wireless power transfer strategies for implantable bioelectronics," *IEEE Reviews in Biomedical Engineering*, vol. 10, pp. 136–161, 2017.
- [2] J. S. Ho, S. Kim, and A. S. Y. Poon, "Midfield wireless powering for implantable systems," *Proceedings of the IEEE*, vol. 101, no. 6, pp. 1369–1378, 2013.
- [3] F. P. Pons-Faudoa, A. Sizovs, K. A. Shelton, Z. Momin, J. A. Niles, L. R. Bushman, J. Xu, C. Y. X. Chua, J. E. Nichols, S. Demaria, M. M. Ittmann, T. Hawkins, J. F. Rooney, M. A. Marzinke, J. T. Kimata, P. L. Anderson, P. N. Nehete, R. C. Arduino, M. Ferrari, K. J. Sastry, and A. Grattoni, "Preventive efficacy of a tenofovir alafenamide fumarate nanofluidic implant in shiv-challenged nonhuman primates," *Advanced Therapeutics*, vol. 4, no. 3, p. 2000163, 2021.
- [4] F. P. Pons-Faudoa, A. Ballerini, J. Sakamoto, and A. Grattoni, "Advanced implantable drug delivery technologies: transforming the clinical landscape of therapeutics for chronic diseases," *Biomedical Microdevices*, vol. 21, no. 2, p. 47, May 2019.
- [5] J. S. Ho, A. J. Yeh, E. Neofytou, S. Kim, Y. Tanabe, B. Patlolla, R. E. Beygui, and A. S. Y. Poon, "Wireless power transfer to deep-tissue microimplants," *Proceedings of the National Academy of Sciences*, vol. 111, no. 22, pp. 7974–7979, 2014.
- [6] G. Bruno, G. Canavese, X. Liu, C. S. Filgueira, A. Sacco, D. Demarchi, M. Ferrari, and A. Grattoni, "The active modulation of drug release by an ionic field effect transistor for an ultra-low power implantable nanofluidic system," *Nanoscale*, vol. 8, pp. 18 718–18 725, 2016.
- [7] N. Di Trani, A. Silvestri, G. Bruno, T. Geninatti, C. Y. X. Chua, A. Gilbert, G. Rizzo, C. S. Filgueira, D. Demarchi, and A. Grattoni, "Remotely controlled nanofluidic implantable platform for tunable drug delivery," *Lab on a chip*, vol. 19, no. 13, pp. 2192–224, 2019.
- [8] Y. Zhou, C. Liu, and Y. Huang, "Wireless power transfer for implanted medical application: A review," *Energies*, vol. 13, 6 2020.
- [9] G. L. Barbruni, P. M. Ros, D. Demarchi, S. Carrara, and D. Ghezzi, "Miniaturised wireless power transfer systems for neurostimulation: A review," *IEEE Transactions on Biomedical Circuits and Systems*, vol. 14, no. 6, pp. 1160–1178, 2020.
- [10] S. R. Khan, S. K. Pavuluri, G. Cummins, and M. P. Y. Desmulliez, "Wireless power transfer techniques for implantable medical devices: A review," *Sensors*, vol. 20, no. 12, 2020.
- [11] A. N. Khan, Y.-O. Cha, H. Giddens, and Y. Hao, "Recent advances in organ specific wireless bioelectronic devices: Perspective on biotelemetry and power transfer using antenna systems," *Engineering*, vol. 11, pp. 27–41, 2022.
- [12] M. Haerinia and R. Shadid, "Wireless power transfer approaches for medical implants: A review," *Signals*, vol. 1, pp. 209–229, 12 2020.
- [13] "En 45502-1 active implantable medical devices – part 1: General requirements for safety, marking and information to be provided by the manufacturer," 1997.
- [14] H. J. Kim, H. Hirayama, S. Kim, K. J. Han, R. Zhang, and J. W. Choi, "Review of near-field wireless power and communication for biomedical applications," *IEEE Access*, vol. 5, pp. 21 264–21 285, 9 2017.
- [15] A. Silvestri, N. Di Trani, G. Canavese, P. Motto Ros, L. Iannucci, S. Grassini, Y. Wang, X. Liu, D. Demarchi, and A. Grattoni, "Silicon carbide-gated nanofluidic membrane for active control of electrokinetic ionic transport," *Membranes*, vol. 11, no. 7, 2021.
- [16] F. Del Bono, A. Bontempi, N. Di Trani, D. Demarchi, A. Grattoni, and P. M. Ros, "Wireless power transfer closed-loop control for low-power active implantable medical devices," in *2022 IEEE Sensors*, 2022, pp. 1–4.
- [17] N. Di Trani, A. Silvestri, A. Sizovs, Y. Wang, D. R. Erm, D. Demarchi, X. Liu, and A. Grattoni, "Electrostatically gated nanofluidic membrane

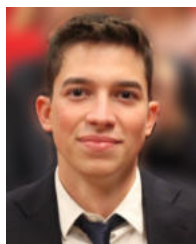
for ultra-low power controlled drug delivery,” *Lab Chip*, vol. 20, pp. 1562–1576, 2020.

- [18] J. C. Quarterman, S. M. Geary, and A. K. Salem, “Evolution of drug-eluting biomedical implants for sustained drug delivery,” *European Journal of Pharmaceutics and Biopharmaceutics*, vol. 159, pp. 21–35, 2021.
- [19] *LTC4124 100 mA Li-Ion Charger with Low Battery Disconnect*, Analog Devices, 2019, rev. A. [Online]. Available: <https://www.analog.com/en/products/ltc4124.html>
- [20] *LTC4125 5 W AutoResonant Wireless Power Transmitter*, Analog Devices, 2015. [Online]. Available: <https://www.analog.com/en/products/ltc4125.html>
- [21] R. Jegadeesan and Y.-X. Guo, “Topology selection and efficiency improvement of inductive power links,” *IEEE Transactions on Antennas and Propagation*, vol. 60, no. 10, pp. 4846–4854, 2012.
- [22] W. Li, “Close the loop between wireless charger receiver and transmitter without digital controllers,” Analog Devices, Tech. Rep., 2022.
- [23] R. K. Pokharel, A. Barakat, S. Alshhaw, K. Yoshitomi, and C. Sarris, “Wireless power transfer system rigid to tissue characteristics using metamaterial inspired geometry for biomedical implant applications,” *Scientific Reports*, vol. 11, no. 1, p. 5868, Mar 2021. [Online]. Available: <https://doi.org/10.1038/s41598-021-84333-3>
- [24] X. Jiang, F. Tahar, T. Miyamoto, A. Barakat, K. Yoshitomi, and R. K. Pokharel, “Efficient and compact dual-band wireless power transfer system through biological tissues using dual-reference dgs resonators,” in *2021 IEEE MTT-S International Microwave Symposium (IMS)*, 2021, pp. 54–57.
- [25] E. Ayoub and N. Karami, “Review on the charging techniques of a li-ion battery,” in *2015 Third International Conference on Technological Advances in Electrical, Electronics and Computer Engineering (TAECE)*, 2015, pp. 50–55.
- [26] I. Williams, E. Brunton, A. Rapeaux, Y. Liu, S. Luan, K. Nazarpour, and T. G. Constantinou, “Senseback - an implantable system for bidirectional neural interfacing,” *IEEE Transactions on Biomedical Circuits and Systems*, vol. 14, no. 5, pp. 1079–1087, 2020.
- [27] K. Hynynen, D. Deyoung, M. Kundrat, and E. Moros, “The effect of blood perfusion rate on the temperature distributions induced by multiple, scanned and focused ultrasonic beams in dogs’ kidneys in vivo,” *International Journal of Hyperthermia*, vol. 5, no. 4, pp. 485–497, 1989, PMID: 2746052. [Online]. Available: <https://doi.org/10.3109/02656738909140473>
- [28] A. Ghahary and B. Cho, “Design of transcutaneous energy transmission system using a series resonant converter,” *IEEE Transactions on Power Electronics*, vol. 7, no. 2, pp. 261–269, 1992.
- [29] G. B. Joun and B. Cho, “An energy transmission system for an artificial heart using leakage inductance compensation of transcutaneous transformer,” *IEEE Transactions on Power Electronics*, vol. 13, no. 6, pp. 1013–1022, 1998.
- [30] M. A. Adeeb, A. B. Islam, M. R. Haider, F. S. Tulip, M. N. Ericson, and S. K. Islam, “An inductive link-based wireless power transfer system for biomedical applications,” *Active and Passive Electronic Components*, vol. 2012, 2012.
- [31] M. Ghovanloo and S. Atluri, “A wide-band power-efficient inductive wireless link for implantable microelectronic devices using multiple carriers,” *IEEE Transactions on Circuits and Systems I: Regular Papers*, vol. 54, no. 10, pp. 2211–2221, 2007.
- [32] M. Catrysse, B. Hermans, and R. Puers, “An inductive power system with integrated bi-directional data-transmission,” *Sensors and Actuators A: Physical*, vol. 115, no. 2, pp. 221–229, 2004, the 17th European Conference on Solid-State Transducers. [Online]. Available: <https://www.sciencedirect.com/science/article/pii/S0924424704001335>
- [33] A. Grattoni, D. Fine, A. Ziemys, J. Gill, E. Zabre, R. Goodall, and M. Ferrari, “Nanochannel systems for personalized therapy and laboratory diagnostics,” *Current Pharmaceutical Biotechnology*, vol. 11, no. 4, pp. 343–365, 2010.



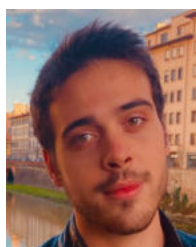
Fabiana Del Bono (GSM’21) Fabiana Del Bono is a PhD student in Electrical, Electronics and Communications Engineering at Politecnico di Torino, with the MiNES (Micro and Nano Electronics Systems) group. She graduated in Biomedical Engineering at Politecnico di Torino (MSc in 2020, BSc in 2018) and Politecnico di Milano (MSc in 2021).

Since 2021, she is a member of the Executive Committee of the IEEE Student Branch of Politecnico di Torino, currently serving as its Vice-Chair. Her main research interests include the design of implantable medical devices, bioelectronics, and wireless power transfer and communication systems.



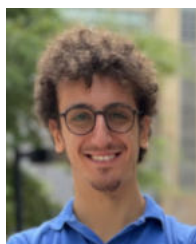
Andrea Bontempi (GSM’21) received B.Sc. and M.Sc. degrees in Biomedical Engineering at the Politecnico di Torino in 2018 and 2021, respectively. He is a PhD student at the Department of Electronics and Telecommunication (DET) with the MiNES (MicroNano Electronic Systems) research group.

Since 2021, he is the Treasurer of the IEEE Student Branch of Politecnico di Torino. His research focuses on electronic and microelectronic system applied to biomedical devices.



Andrea Dentis received the B.Sc. degree in biomedical engineering from Politecnico di Torino, Torino, Italy in 2020.

He is currently a Master’s student in Mechatronic Engineering at Politecnico di Torino, and is carrying out his Master’s thesis at the MiNES (MicroNano Electronic Systems) research group. He has a great interest in electronics and robotics, especially in the biomedical environment.



Nicola Di Trani received his B.S. and M.S. in Biomedical Engineering from the Politecnico di Turin, Turin, Italy in 2015 and 2017, respectively. In 2021, he received his Ph.D. in Material Science and Engineering from the University of Chinese Academy of Sciences.

He’s currently a Postdoctoral Fellow in the laboratory of Dr. Alessandro Grattoni at the Houston Methodist Research Institute in Houston, Texas, US. During his Ph.D. and postdoc he has been working on the development of implantable devices for drug delivery. These devices are aimed at the treatment and/or management of a variety of chronic pathologies including hypertension, cancer and HIV prophylaxis. He’s author and co-author of more than 20 peer-reviewed scientific publications in the field of drug delivery, nanofluidics, HIV PrEP, cancer and material science.



Danilo Demarchi (M'10-SM'13) received Engineering Degree and Ph.D. in electronics engineering from Politecnico di Torino, Italy, in 1991 and 1995, respectively.

Full Professor at Politecnico di Torino, Department of Electronics and Telecommunications, Turin, Italy. Visiting Professor at Tel Aviv University (2018-2021) and at EPFL Lausanne (2019). Visiting Scientist at MIT and Harvard Medical School (2018). Author and co-author of 5 patents and more than 300 international scientific publications.

cations.

Prof. Demarchi is the leader of the MiNES (MicroNano Electronic Systems) Laboratory at Politecnico di Torino, Member of IEEE Sensors Council, Member of the IEEE BioCAS Technical Committee, Associate Editor of IEEE Sensors Journal, of the IEEE Open Journal of Engineering in Medicine and Biology and of the Springer Journal BioNanoScience, General Chair of IEEE BioCAS 2017 and founder of the IEEE FoodCAS Workshop (Circuits and Systems for Better Quality Food).



Alessandro Grattoni received a M.S. degree in mechanical engineering from Politecnico di Torino, Italy in 2005 and Ph.D. degree in biomedical engineering from the same institution in 2009. In 2010, he completed a postdoctoral training in nanotechnology in Dr. Mauro Ferrari's laboratory at the Brown Foundation Institute of Molecular Medicine at the University of Texas Health Science Center at Houston, Texas. In 2010 was appointed as an assistant professor in the Department of Nanomedicine at the Houston

Methodist Research Institute (HMRI) in Houston.

Currently, he is the Frank J. and Jean Raymond Centennial Chair, Chairman and Professor, Department of Nanomedicine at HMRI. Dr. Grattoni's research activities are dedicated to the development and clinical translation of implantable technology platforms for controlled long-acting drug delivery and cell transplantation. Active areas of research include HIV pre-exposure prophylaxis (PrEP), metabolic syndrome, and intratumoral cancer immunoradiotherapy. Additionally, Dr. Grattoni's laboratory is actively studying electrokinetics in nanofluidics for modulating molecular transport to achieve a remotely controlled drug delivery platform for telemedicine. Further area of research is 3D-manufactured microencapsulation devices for the transplantation of endocrine cells. The primary focus is the creation of a protected environment supporting cell transplantation, long-term viability and function. Areas of applications include type 1 diabetes and hypogonadism among others. With the support for the ISS National Lab, Dr. Grattoni has established a Center for Space Nanomedicine at the Houston Methodist Research Institute, fully focused on leveraging the microgravity laboratory of the International Space Station, for the investigation of nanomedicine approaches for the benefit of patients on-Earth as well as for Space exploration. Dr. Grattoni is founder and scientific advisor for two spin-off companies, Semper Therapeutics and NanoGland which are focused on the clinical translation of the technology platforms developed in his laboratory.



Paolo Motto Ros (M'16) received the M.Sc. and Ph.D. degrees in electronic engineering from the Politecnico di Torino, Italy, in 2005 and 2009, respectively.

Assistant Professor at Politecnico di Torino, Department of Electronics and Telecommunications, Turin, Italy. Post-doc researcher at Politecnico di Torino (2009–2012), senior (since 2014) post-doc researcher at Istituto Italiano di Tecnologia (2012–2019), senior post-doc researcher and adjunct professor (since 2017) at Politecnico di Torino (2019–2022). Author and co-author of more than 80 international scientific publications.

Dr. Motto Ros was member of the organizing committee of IEEE ICECS 2019, the FoodCAS Satellite Event at IEEE ISCAS 2021 and IEEE CAFE 2023, review committee member of IEEE BioCAS 2021 and 2022, special session organizer at IEEE MeMeA 2021, program committee member of IEEE LASCAS 2022, guest editor of MDPI Sensors and guest associate editor of Frontiers in Neurorobotics; he is Associate Editor of IEEE Transactions on AgriFood Electronics and IEEE Transactions on Biomedical Circuits and Systems.