

Whole-Body Trajectory Optimization for Robot Multimodal Locomotion

Original

Whole-Body Trajectory Optimization for Robot Multimodal Locomotion / L'Erario, Giuseppe; Nava, Gabriele; Romualdi, Giulio; Bergonti, Fabio; Razza, Valentino; Dafarra, Stefano; Pucci, Daniele. - ELETTRONICO. - (2022), pp. 651-658. (Intervento presentato al convegno 2022 IEEE-RAS 21st International Conference on Humanoid Robots (Humanoids) tenutosi a Ginowan (Japan) nel 28-30 November 2022) [10.1109/Humanoids53995.2022.10000241].

Availability:

This version is available at: 11583/2974599 since: 2023-01-13T13:03:39Z

Publisher:

IEEE

Published

DOI:10.1109/Humanoids53995.2022.10000241

Terms of use:

This article is made available under terms and conditions as specified in the corresponding bibliographic description in the repository

Publisher copyright

IEEE postprint/Author's Accepted Manuscript

©2022 IEEE. Personal use of this material is permitted. Permission from IEEE must be obtained for all other uses, in any current or future media, including reprinting/republishing this material for advertising or promotional purposes, creating new collecting works, for resale or lists, or reuse of any copyrighted component of this work in other works.

(Article begins on next page)

Whole-Body Trajectory Optimization for Robot Multimodal Locomotion

Giuseppe L'Erario^{1,2}, Gabriele Nava¹, Giulio Romualdi¹,
Fabio Bergonti^{1,2}, Valentino Razza¹, Stefano Dafarra¹ and Daniele Pucci^{1,2}

Abstract—The general problem of planning feasible trajectories for multimodal robots is still an open challenge. This paper presents a whole-body trajectory optimisation approach that addresses this challenge by combining methods and tools developed for aerial and legged robots. First, robot models that enable the presented whole-body trajectory optimisation framework are presented. The key model is the so-called robot centroidal momentum, the dynamics of which is directly related to the models of the robot actuation for aerial and terrestrial locomotion. Then, the paper presents how these models can be employed in an optimal control problem to generate either terrestrial or aerial locomotion trajectories with a unified approach. The optimisation problem considers robot kinematics, momentum, thrust forces and their bounds. The overall approach is validated using the multimodal robot iRonCub, a flying humanoid robot that expresses a degree of terrestrial and aerial locomotion. To solve the associated optimal trajectory generation problem, we employ ADAM, a custom-made open-source library that implements a collection of algorithms for calculating rigid-body dynamics using CasADi.

I. INTRODUCTION

Monomodal locomotion systems, such as legged robots or quadrotors, often struggle when dealing with diverse scenarios. For instance, legged robots may traverse cluttered environments but often strive when covering large distances. Quadrotors and drones, instead, may cover larger distances at the cost of large energy expenditures when performing quasi-static tasks where legged systems are more efficient. Robots with multimodal locomotion abilities can overcome these difficulties that monomodal systems have, thus offering potential solutions for several real applications. Their possibility to use either terrestrial or aerial locomotion renders multimodal robots more effective when the surrounding environment and the underlying terrain are unstructured and difficult to predict. Flying exapods [1], insect biobots [2], advanced quadrotors [3], and flying humanoid robots [4] are only a few examples of multimodal robots that may have a concrete impact in the near future [5], [6], [7]. One of the main questions that arise when controlling multimodal robots, however, is the automatic transition between aerial and terrestrial locomotion, which is supposed to depend upon the robot's environment and desired motion. This paper takes a step in this direction by proposing whole-body trajectory optimisation methods that generate multimodal locomotion patterns depending on the robot's desired motion and surrounding environment.

¹ Artificial and Mechanical Intelligence, Istituto Italiano di Tecnologia, Genoa, Italy name.surname@iit.it

² University of Manchester, Manchester, UK

This work is supported by Honda R&D Co.



Fig. 1. iRonCub: the jet-powered humanoid robot. The jets are attached to the arms and the chest and exert 160 N and 220 N respectively.

Planning trajectories for multimodal robots can leverage tools and methods developed for flying and legged systems. The literature on flying vehicles is large and diverse [8], [9]. Most of the research is grounded on the assumption that the aerial system is a *floating base* rigid-body powered by body-fixed thrust forces and that the aerodynamic forces are considered negligible. Common strategies to generate open-loop trajectories are based on RRT algorithms [10], [11] as well on optimisation-based approaches [12]. The output of the trajectory generation layer is then fed to a controller whose aim is to stabilize the planned trajectory. A widely used control approach is the so-called *vectored-thrust* paradigm [13], [14]: having modelled the quadrotor as a rigid body, we can exploit the coupling between the robot position and attitude and use the angular velocity to align the external forces to the planned trajectory.

Trajectory planning for legged robots is often addressed by using the *floating-base* formalism, which assumes that none of the robot's links has an *a priori* constant position-and-orientation with respect to an inertial reference frame. Planning trajectories for complex legged systems using this formalism, however, is not an easy task. Most strategies are based on optimisation techniques that, dealing with issues such as the high-dimensionality of the nonlinear system and interactions with the environment, generate locally optimal motions. Trajectory optimisation approaches using the full-robot dynamics often lead to large computational time, albeit they generate the complete set of inputs and interaction forces [15]. Other approaches for the planning of legged systems as humanoid robots are based on linear and lower dimensional *simplified models*. The linear inverted pendulum (LIP) model and the divergent component of motion (DCM) are two of these [16], [17]. The resulting optimisation methods are usually faster but not able to exploit the full robot dynamics and kinematics constraints. The *centroidal momentum dynamics* [18] is a

widely used model for robot dynamics under external forces since it projects the effects of the base and joint motions in a 6-dimensional space. The use of these reduced models improves the problem tractability while catching most of the robot governing dynamics for real applications [19]. A different family of trajectory optimisation algorithms is the so-called *kino-dynamic* planners. These strategies use the centroidal momentum along with the full kinematics, bounding the effects of the contact forces to the robot geometry [20], [21], [22].

Trajectory optimisation strategies for multimodal robots are still at an early stage and no general and unified approach exists to the best of the authors' knowledge. This paper takes a step in this direction by proposing a unified approach for the trajectory planning of multimodal robots expressing a degree of terrestrial and aerial locomotion. More precisely, the contribution of the paper is the design of a trajectory optimisation framework that optimizes the robot centroidal momentum dynamics under the influence of contact and thrust forces having nonlinear dynamics. We propose to incorporate the thrust dynamics along with the centroidal dynamics and the full kinematics of the robot, framing the problem as a kino-dynamic planner. The overall output of the proposed approach is a set of feasible trajectories for the robot joints, contact forces, and thrust throttles. To solve the associated optimal trajectory generation problem, we employ ADAM, a custom-made open-source library that implements a collection of algorithms for calculating rigid-body dynamics using CasADi. The overall approach is tested using iRonCub, a multimodal flying humanoid robot that can walk and fly thanks to model jet turbines installed on the robot.

The paper is organized as follows. Sec. II introduces the notation and recalls some concepts about floating-base systems. Sec. III presents the models that enable the presented trajectory optimisation framework. Sec. IV presents the trajectory optimisation formulation by specifying constraints and cost function of the associated optimal problem. Sec. V presents validation results on the iRonCub, a flying humanoid robot. Sec. VI closes the paper with the conclusion perspectives.

II. BACKGROUND

A. Notation

- \mathbf{I}_n and $\mathbf{0}_n$ denote the $n \times n$ identity and zero matrix;
- \mathcal{I} denotes the inertial frame;
- ${}^{\mathcal{A}}p_{\mathcal{C}}$ represents the vector connecting the origin of the frame \mathcal{A} to the origin of the frame \mathcal{C} , expressed in \mathcal{A} ;
- ${}^{\mathcal{A}}R_{\mathcal{B}} \in SO(3)$ and ${}^{\mathcal{A}}H_{\mathcal{B}} \in SE(3)$ are the rotation matrix and the homogeneous transform matrix;
- $\hat{\cdot}$ defines the *hat operator*: $\mathbb{R}^3 \rightarrow \mathfrak{so}(3)$, where $\mathfrak{so}(3)$ is the set of skew-symmetric matrices. $\hat{x}y = x \times y$, where \times is the cross product operator in \mathbb{R}^3 . $x \times = S(x)$
- ${}^{\mathcal{A}}f_{\mathcal{B}} \in \mathbb{R}^3$ and ${}^{\mathcal{A}}\tau_{\mathcal{B}} \in \mathbb{R}^3$ are the force and torque acting on the rigid body on the frame \mathcal{B} and expressed in \mathcal{A} ;
- $f_{\mathcal{B}} = \begin{bmatrix} {}^{\mathcal{A}}f_{\mathcal{B}} & {}^{\mathcal{A}}\tau_{\mathcal{B}} \end{bmatrix}^{\top}$ identifies the wrench acting on a point of the rigid body;
- g is the gravity vector expressed in the inertial frame \mathcal{I} .

B. Floating-base modeling

A multimodal robot can be modeled as a multi-body system composed of $n + 1$ rigid bodies – called links – connected by n joints with one degree of freedom. Using of the *floating base* formalism, we define the *configuration space* as $\mathbb{Q} \in \mathbb{R}^3 \times SO(3) \times \mathbb{R}^n$. More precisely, $q = ({}^{\mathcal{I}}p_{\mathcal{B}}, {}^{\mathcal{I}}R_{\mathcal{B}}, s)$ defines a specific robot configuration. The velocity of the system belongs to the set $\mathbb{V} \in \mathbb{R}^3 \times \mathbb{R}^3 \times \mathbb{R}^n$. An element of \mathbb{V} is given by $\nu = ({}^{\mathcal{I}}\dot{p}_{\mathcal{B}}, {}^{\mathcal{I}}\omega_{\mathcal{B}}, \dot{s})$, where $({}^{\mathcal{I}}\dot{p}_{\mathcal{B}}, {}^{\mathcal{I}}\omega_{\mathcal{B}})$ are the linear and angular velocity of the base frame \mathcal{B} w.r.t. the inertial \mathcal{I} and \dot{s} are the joint velocities. The relationship ${}^{\mathcal{I}}R_{\mathcal{B}} = S({}^{\mathcal{I}}\omega_{\mathcal{B}}){}^{\mathcal{I}}R_{\mathcal{B}}$ is then satisfied. By applying the Euler-Poincaré formalism, the equation of motion of a system exchanging n_b wrenches with the environment results in

$$M(q)\dot{\nu} + C(q, \nu)\nu + G(q) = \begin{bmatrix} 0_{6 \times 1} \\ \tau \end{bmatrix} + \sum_{i=1}^{n_b} J_i^{\top} f_i, \quad (1)$$

where $M, C \in \mathbb{R}^{(n+6) \times (n+6)}$ are the mass and Coriolis matrix (accounts for the Coriolis and centrifugal terms), $G \in \mathbb{R}^{n+6}$ is the gravity vector, $\tau \in \mathbb{R}^n$ are the internal actuation torques, f_i is the i th of the n_b external wrench applied on the robot. The application point of the wrench f_i is assumed to be the origin of a frame \mathcal{C}_i attached to the link where the wrench acts. The wrench f_i is expressed in the inertial frame \mathcal{I} . The jacobian $J_i(q)$ maps the the system velocity ν to the velocity $({}^{\mathcal{I}}\dot{p}_{\mathcal{C}_i}, {}^{\mathcal{I}}\omega_{\mathcal{C}_i})$ of the frame \mathcal{C}_i .

III. MODELS FOR TRAJECTORY OPTIMISATION

This section introduces the multimodal robot models that are leveraged in the predictive trajectory layer of Sec. IV.

A. Centroidal Momentum Dynamics

Eq. (1) is the rigid multi-body model of the underlying robot and characterises the time-evolution of both the robot joints s and the floating base $({}^{\mathcal{I}}p_{\mathcal{B}}, {}^{\mathcal{I}}R_{\mathcal{B}})$. Planning robot trajectories using (1), however, leads to *large* optimisation problems often having very high computational time, which also depend on sets of gains not easy to tune. For this reason, robot trajectory optimisation often leverages system representations different from (1) with the aim of dealing with models leading to simpler and faster optimisation problems to solve. A possible approach is to use *reduced* robot models that follow from (1) but capture the time evolution of a reduced set of the robot state variables. One of these reduced models is the so-called *centroidal momentum*, namely, a six-dimensional quantity describing the time evolution of the total robot momentum expressed at a proper frame of reference [18].

Let \mathcal{G} be a frame having the origin at the robot CoM $x \in \mathbb{R}^3$ and the orientation of the inertial frame \mathcal{I} . The *centroidal momentum* is then denoted by

$$g_h = \begin{bmatrix} g_{h_p} \\ g_{h_\omega} \end{bmatrix} \in \mathbb{R}^6, \quad (2)$$

and is given by the compound linear and angular momentum of each link expressed in the frame \mathcal{G} .

The centroidal momentum dynamics is the sum of the external forces and moments that act on the system

$$\mathcal{G}\dot{h} = \sum_i^{n_b} \begin{bmatrix} \mathbf{I}_3 & \mathbf{0}_3 \\ S(p_i - x) & \mathbf{I}_3 \end{bmatrix} f_i + m\bar{g}, \quad (3)$$

being $\bar{g} = [g^\top \ 0_{1 \times 3}]^\top$, m the total mass of the robot, and p_i the origin of the i -th of one of the n_b bodies on which the wrenches are applied.

Moreover, the following relationship holds

$$\mathcal{G}h = J_{\text{CMM}}(q)\nu, \quad (4)$$

where J_{CMM} is the *Centroidal Momentum Matrix* (CMM), mapping the robot velocity to the centroidal momentum [18]. We recall that the linear momentum relates with the robot CoM velocity depending on the total mass m as $\mathcal{G}h_p = m\dot{x}$.

Under the assumption that the joint quantities can be chosen at will, Eq. (3) expresses the entire robot dynamics, which makes Eq. (1) not necessary for trajectory optimisation purposes. For the sake of clarity the superscripts \mathcal{G} , \mathcal{I} , and \mathcal{B} will be omitted in the following sections.

B. Models for the actuation of aerial locomotion

Multimodal robots express both aerial and terrestrial locomotion. Hence, we assume that the robot is powered by n_{jets} thrust forces for achieving aerial locomotion – see Fig 1 for an example. Every thrust force has an intensity denoted by $T_i \in \mathbb{R}$ and its direction and application point are defined by proper frames associated to each thrust vector. In particular, we assume that the i -th thrust generates a pure force, applied at the point p_i , given by

$$f_i = R_i(q) \begin{bmatrix} 0 \\ 0 \\ -T_i \end{bmatrix}, \forall i \in [0, n_{\text{jets}}], \quad (5)$$

where $R_i(q)$ represents the orientation of the aforementioned frame.

Assuming that thrust forces apply pure forces leads to the following *centroidal momentum* dynamics expression

$$\dot{h} = \sum_i^{n_{\text{jets}}} \begin{bmatrix} \mathbf{I}_3 \\ S(p_i - x) \end{bmatrix} f_i + m\bar{g}. \quad (6)$$

In many cases, thrust forces cannot be chosen at will [23], [4], [24], and additional models for characterising thrust dynamics shall be taken into account. By neglecting the subscript i , we assume that the thrust dynamics is described by a second-order nonlinear model

$$\ddot{T} = f(T, \dot{T}) + g(T, \dot{T}, u). \quad (7)$$

For example, jet turbines can generate thrust forces for aerial humanoid robots. Using data-driven approaches, one can show that jet dynamics are given by [24]

$$f(T, \dot{T}) = K_T T + K_{TT} T^2 + K_D \dot{T} + K_{DD} \dot{T}^2 + K_{TD} T \dot{T} + c, \quad (8a)$$

$$g(T, \dot{T}) = (B_U + B_T T + B_D \dot{T})(u + B_{UU} u^2), \quad (8b)$$

where K and B are a set of parameters that relate the evolution of the jet state $[T, \dot{T}]^\top$ to the jet throttle u .

C. Models for the actuation of terrestrial locomotion

We assume that the robot can achieve terrestrial locomotion by making and breaking contact with the environment. So, we assume that the robot may be in contact with a rigid environment at n_c distinct locations. Furthermore, we assume that the robot makes *surface* contacts, and the contact surface can be approximated with a rectangle. Consequently, the net wrench resulting from the interaction between the robot and the environment at the contact location can be described by four pure forces acting at the corner of the rectangle. In light of the above, the *centroidal dynamics* under the presence of contact forces and zero thrust writes

$$\dot{h} = \sum_j^{n_c} \begin{bmatrix} \mathbf{I}_3 \\ S(p_j - x) \end{bmatrix} f_j + m\bar{g}, \quad (9)$$

where p_j is the position of the vertex j and f_j is the pure force acting on it.

The contact force is assumed to be non-null when the point is in contact with the surface. This condition is described by the so-called *complementary condition*

$$\mathbf{d}(p_j)\mathbf{n}(p_j)^\top f_j = 0, \quad (10)$$

where $\mathbf{d}(p_j)$ returns the distance of the point p_j from the surface and $\mathbf{n}(p_j)$ computes the normal of the surface at the point. When the robot makes a *stable* contact with the environment, the contact does not slide, i.e. when the contact force is non-zero, the tangential motion of the contact point is null. This condition is called *planar complementarity condition* and is given by

$$(\mathbf{t}(p_j)^\top \dot{p}_j)(\mathbf{n}(p_j)^\top f_j) = 0, \quad (11)$$

where \mathbf{t} returns the tangential component of the surface at p_j .

The contact force belongs to a second-order cone called *friction cone* [25]. Nevertheless, the friction cone is oftentimes approximated with a set of linear inequalities of the type

$$-\mu \mathbf{n}(p_j)^\top f_j \leq \mathbf{t}(p_j)^\top f_j \leq \mu \mathbf{n}(p_j)^\top f_j, \quad (12)$$

where $\mathbf{t}(p_j)^\top f_j$ represents the tangential component of the contact forces to the surface. This constraint is re-writable in matrix form as $Af_j \leq b$.

Summing up the contributions of the contact forces (9) and of the thrust forces (6), (3) is rewritten as

$$\dot{h} = \sum_i^{n_{\text{jets}}} \begin{bmatrix} \mathbf{I}_3 \\ S(p_i - x) \end{bmatrix} R_i \begin{bmatrix} 0 \\ 0 \\ -T_i \end{bmatrix} + \sum_j^{n_c} \begin{bmatrix} \mathbf{I}_3 \\ S(p_j - x) \end{bmatrix} f_j + m\bar{g}. \quad (13)$$

IV. TRAJECTORY OPTIMISATION

This section presents the trajectory optimisation algorithms for multimodal robots characterised by the models presented above. The main aim is to cast an optimal control problem whose solution represents feasible robot trajectories.

The optimisation algorithms presented below make use of the centroidal momentum described in section III-A.

The centroidal momentum dynamics relates the external wrenches acting on the robot to the robot's center of mass (i.e. linear momentum) and *average angular motions* (i.e. angular momentum). Being the centroidal momentum related to the robot kinematics by (4), momentum-based trajectory planning allows us to enforce joint constraints, end-effector targets, and kinematic penalties. In fact, we can take into account the full robot kinematics relating the robot CoM, contact and thrust forces, and the centroidal momentum to the robot configuration q and its velocity ν .

The optimisation problem for momentum-based trajectory planning is then given by the components presented next:

- a cost function J that accounts for regularization tasks and desired final state;
- a set of constraints enforcing the robot dynamics, the thrusts, the robot kinematics, and the contacts;
- a set of constraints on initial and final centroidal momentum quantities. These play a pivotal role: they are in charge of defining initial and final equilibrium, in addition to initial and *desired* final CoM position.

The problem is transcribed using a direct *multiple-shooting* method. The trajectories of the optimisation variables are discretized with N knots, with a time interval Δt .

The base rotation R is vectorized using the quaternion representation. Hence, from now on, $q := [p^\top \ \rho^\top \ s^\top]^\top$, where $\rho \in \mathbb{H}$ is a unit quaternion.

The decision variables of the nonlinear problem are:

- CoM position, velocity and acceleration x, \dot{x}, \ddot{x} ;
- the angular momentum and its time derivative h_ω, \dot{h}_ω ;
- the robot configuration and its velocity q, ν, \dot{s} ;
- the contact forces and points f, \dot{f}, p ;
- the thrust quantities and throttle T, \dot{T}, \ddot{T}, u ;
- the total time $N\Delta t$.

A. Constraints

Constraints ensure that the optimised solution meets the defined physical description, e.g. robot dynamics consistency, contact forces in the friction cones and fulfilling the complementarity conditions, etc, at each knot k .

1) *Centroidal dynamics*: The six-dimensional centroidal dynamics taking into account thrust and contact forces – see (13) – is enforced by the constraint

$$\begin{aligned} \begin{bmatrix} \ddot{x}[k]m \\ \dot{h}_\omega[k] \end{bmatrix} &= \sum_i^{n_c} \begin{bmatrix} \mathbf{I}_3 \\ S(p_i[k] - x[k]) \end{bmatrix} f_i[k] \\ &+ \sum_j^{n_{\text{jets}}} \begin{bmatrix} \mathbf{I}_3 \\ S(p_j[k] - x[k]) \end{bmatrix} R_j[k] \begin{bmatrix} 0 \\ 0 \\ -T_i[k] \end{bmatrix}. \end{aligned} \quad (14)$$

2) *Centroidal Momentum and Kinematics*: The time evolution of the centroidal momentum is directly related to the robot kinematics – see (4). For instance, the linear robot momentum is given by $g_{h_p} = m\dot{x}$ and, in turn, the robot CoM x is a function of the robot configuration, namely

$$x[k] = \text{CoM}(q[k]). \quad (15)$$

Likewise, the angular momentum also depends upon the robot configuration and velocity. By isolating the last three equations of (4), one then obtains that the angular centroidal momentum is constrained by

$$h_\omega[k] = [\mathbf{0}_3 \quad \mathbf{I}_3] J_{\text{CMM}}(q[k])\nu[k]. \quad (16)$$

3) *Contact points and forces*: Robot contact points must satisfy the robot kinematics. The following equality then ensures that the contact position p_i equals the point computed using the robot forward kinematics of the i -th contact frame

$$p_i[k] = \text{fk}_i(q[k]). \quad (17)$$

Assuming rigid contacts presented in Sec. III-C, one has that the contact should not penetrate the surface and that normal component of the reaction force to the surface shall be non-negative, i.e. we obtain the following inequality constraint

$$\mathbf{d}(p_i[k]) \geq 0, \quad \mathbf{n}(p_i[k])^\top f_i[k] \geq 0. \quad (18)$$

Every force should lie inside the linearized friction cone

$$A f_i[k] \leq b, \quad (19)$$

where A and b depend on the static friction coefficient μ .

To determine the contact conditions, one may use the complementarity conditions (10) and (11). When used in an optimisation algorithm as a constraint, however, (10), (11) may lead to numerical issues: the constraint Jacobian may get singular, violating the linear independence constraint qualification (LIQC) that many nonlinear solver algorithms exploit to find optimal solutions [26]. For this reason, the complementarity condition (10) is implemented in its relaxed form, which leads to fewer numerical problems

$$\mathbf{d}(p_i[k])\mathbf{n}(p_i[k])^\top f_i[k] \leq \epsilon_n[k], \quad (20)$$

where ϵ_n is a so-called bounded *panic* variable that is supposed to be as small as possible. Hence, we include ϵ_n in the cost function so as its 2-norm is minimised.

The planar complementarity condition is implemented in its discretized and *relaxed* form, which writes

$$-\epsilon_t[k] \leq \mathbf{t}(p_i[k]) \left(p_i[k+1] - p_i[k] \right) \mathbf{n}(p_i[k])^\top f_i[k] \leq \epsilon_t[k], \quad (21)$$

where, in the same spirit of (20), we make use of a bounded panic variable ϵ_t that is added in the cost function.

4) *Jet location and dynamics*: Thrust forces are associated with frames, so we add the following constraint

$$(p_j, R_j) = \text{fk}_j(q[k]). \quad (22)$$

The thrust dynamics, instead, is enforced with

$$\ddot{T}[k] = f(T[k], \dot{T}[k]) + g(T[k], \dot{T}[k], u[k]), \quad (23)$$

where $f(T, \dot{T})$ and $g(T, \dot{T}, u)$ are the functions (8) regulating the thrust dynamics.

5) *Variables integration*: The evolving optimisation variables are projected along the horizon using backward Euler method, which improves numerical stability [26]. The momentum dynamics evolves as

$$h_\omega[k+1] = h_\omega[k] + \dot{h}_\omega[k+1]\Delta t, \quad (24a)$$

$$x[k+1] = x[k] + \dot{x}[k+1]\Delta t, \quad (24b)$$

$$\dot{x}[k+1] = \dot{x}[k] + \ddot{x}[k+1]\Delta t. \quad (24c)$$

The robot configuration, in the same fashion, evolves as

$$p[k+1] = p[k] + \dot{p}[k+1]\Delta t, \quad (25a)$$

$$\rho[k+1] = \omega[k+1]\Delta t \oplus \rho[k], \quad (25b)$$

$$s[k+1] = s[k] + \dot{s}[k+1]\Delta t, \quad (25c)$$

where the operator \oplus in (25b) redefines the addition operator for the rotation group. In particular, \oplus implements the exponential operator $\omega\Delta t \oplus \rho = \text{Exp}(\omega\Delta t)\rho$, ensuring the membership in the SO(3) group of the variable representing the rotation [27].

Finally, the thrust dynamics evolves as

$$T[k+1] = T[k] + \dot{T}[k+1]\Delta t, \quad (26a)$$

$$\dot{T}[k+1] = \dot{T}[k] + \ddot{T}[k+1]\Delta t. \quad (26b)$$

We introduce the variation of the contact forces as an optimisation variable, which integrates as

$$f[k+1] = f[k] + \dot{f}[k+1]\Delta t, \quad (27)$$

and allows us to obtain smoother contact forces profiles.

6) *Box constraints*: We bound the optimisation variables to their physical limitations using box constraints. In this sense, joints values are bounded inside their range of motion and have a finite variation

$$s_{\min} \leq s[k] \leq s_{\max}, \quad (28a)$$

$$\dot{s}_{\min} \leq \dot{s}[k] \leq \dot{s}_{\max}. \quad (28b)$$

Based on the jet specifications, we limit also the jet throttle

$$u_{\min} \leq u[k] \leq u_{\max}. \quad (29)$$

7) *Boundary constraints*: Initial and final constraints play a key role. We specify the task, mostly defined by the desired final CoM position, through the following constraints:

- Initial constraints: they force the system at equilibrium and the initial CoM position variable at x_0

$$x[0] = x_0, \quad (30a)$$

$$h_\omega[0] = 0, \dot{x}[0] = 0. \quad (30b)$$

- Final constraints: they force the final CoM position variable at a desired x_N

$$x[N] = x_N. \quad (31)$$

B. Cost function

Whilst the final constraints define the final goal, the objective function shapes *how* this final goal is reached. So, the cost function to be minimised is defined as

$$J = l_N + \sum_{k=0}^{N-1} l[k]\Delta t. \quad (32)$$

At each knot k , the running cost $l[k]$ accounts for regularization tasks and it is defined as the weighted 2-norm of the optimisation variables, namely

$$l[k] = \|\dot{x}[k]\|_{w_x} + \|\ddot{x}[k]\|_{w_{\ddot{x}}} + \|h_\omega[k]\|_{w_h} + \|\dot{h}_\omega[k]\|_{w_{\dot{h}}} \\ + \|\dot{s}[k]\|_{w_s} + \|\dot{v}[k]\|_{w_v} + \|s[k] - \bar{s}\|_{w_{\bar{s}}} + \|\epsilon_n[k] + \epsilon_t[k]\|_{w_\epsilon} \\ + \|\dot{f}[k]\|_{w_f} + \|f[k]\|_{w_f} + \|\dot{T}[k]\|_{w_{\dot{T}}} + \|u[k]\|_{w_u},$$

while the final cost l_N drives the momentum dynamics to the equilibrium

$$l_N = \|\dot{x}[N]\|_{\bar{w}_x} + \|\ddot{x}[N]\|_{\bar{w}_{\ddot{x}}} + \|h_\omega[N]\|_{\bar{w}_h} + \|\dot{h}_\omega[N]\|_{\bar{w}_{\dot{h}}}$$

where w, \bar{w} are weights for each term in the cost function and \bar{s} the desired joint postural configuration.

C. Complete Optimisation Problem

Summing up, the optimisation is

$$\min_{\chi} \quad l_N + \sum_{k=0}^{N-1} l[k]\Delta t \\ \text{s.t.} \quad \text{Centroidal dynamics eq. (14),} \\ \text{Centroidal momentum eqs. (15) and (16),} \\ \text{Contact points and forces eqs. (17) to (21),} \\ \text{Jet location and dynamics eqs. (22) and (23),} \\ \text{Box constraints eqs. (28) and (29),} \\ \text{Variables integration eqs. (24) to (27),} \\ \chi[0] = \chi_0, \\ \chi[N] = \chi_N. \quad (33)$$

where χ collects all the optimisation variables.

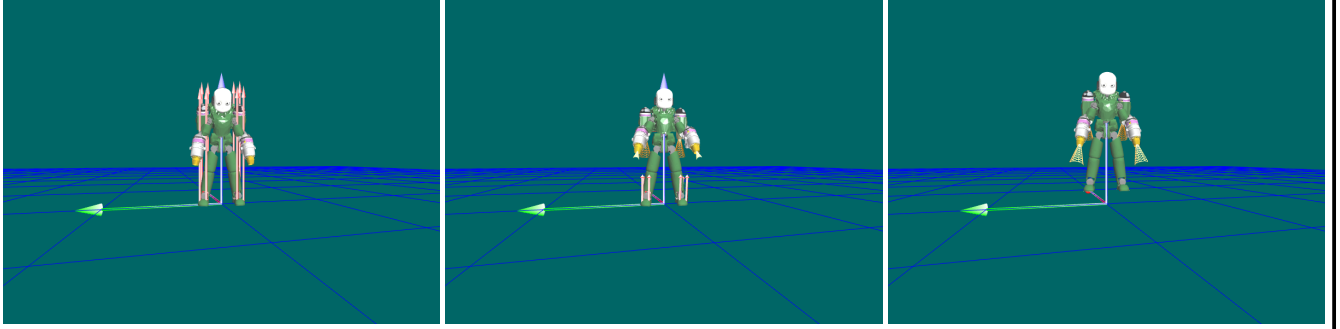
V. VALIDATION ON AN AERIAL HUMANOID ROBOT

This section presents validations for the modelling and optimisation framework above using iRonCub, a flying humanoid robot that expresses terrestrial and aerial locomotion.

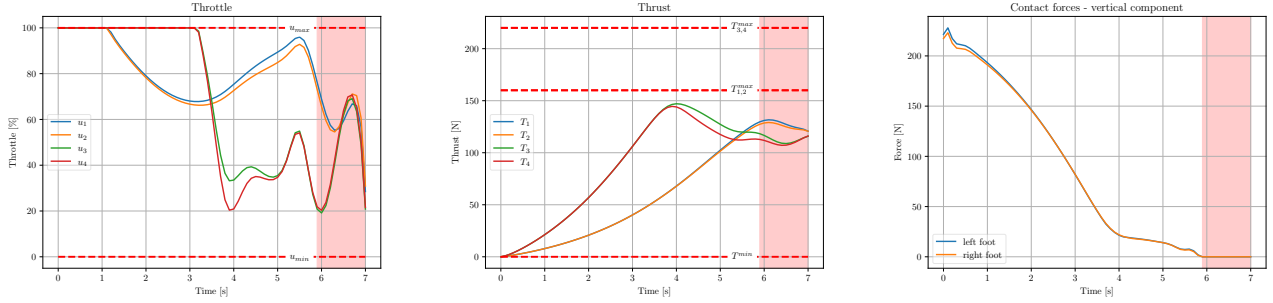
An approach to solving the nonlinear problem (33) makes use of a software framework that computes the rigid-body dynamics of the robot in a symbolic fashion, allowing its propagation in the context of direct transcription methods. For this purpose, we implemented a custom library called ADAM¹ that implements a collection of algorithms for calculating rigid-body dynamics using CasADi [28]. The optimisation problem is then transcribed using the Opti Stack and solved using IPOPT [29] 3.13.4, with the MA97 linear solver.

We carry out the validation of the methodology using the dynamical model of the jet-powered version of iCub [30], namely, the iRonCub. The robot possesses 23 degrees of

¹<https://github.com/ami-iit/ADAM>



(a) Snapshots of the robot take-off.



(b) Trajectories of throttle, thrust and total vertical component of the contact forces during the take-off. The red band represents the flight phase.

Fig. 2. Snapshots and trajectories of the robot during the take-off.

freedom and weights 44kg. It is equipped with 4 model jet engines, 2 on the arms and 2 on the chest, capable of exerting maximum thrust forces of 160 N and 220 N respectively. These limits are included in the problem (33). The parameters of the jet system dynamics (8) are those identified in [24].

We validate the trajectory optimisation framework in different scenarios. First, we test the planner for vertical take-off and landing, walking to flying transition, and jumping. In all the tests, the contact sequence emerges directly from the complementarity formulation and the robot chooses the timing and the contact location freely. The set of weights used in the cost function shapes *how* this task is performed and strongly depends on the task itself. The computational time that the solver spends to generate a trajectory strongly depends on the provided initial guess and goes from hundreds of seconds up to several minutes. Software implementation and results can be found at https://github.com/ami-iit/paper_lerario_2022_planning-multimodal-locomotion.

A. Take-off

The first scenario consists of robot take-off. The robot starts at equilibrium and the jet thrust is set to zero. We set the initial CoM position at $x_0 = 0.57$ m and the final one at $x_0 = 0.7$ m. The net-force transitions smoothly from contact forces to jet thrusts, as Fig 2b shows. The boundaries on thrust and throttle are satisfied and the jet behaviour complies with the jet dynamics. The horizon is 70 knots long. The generated

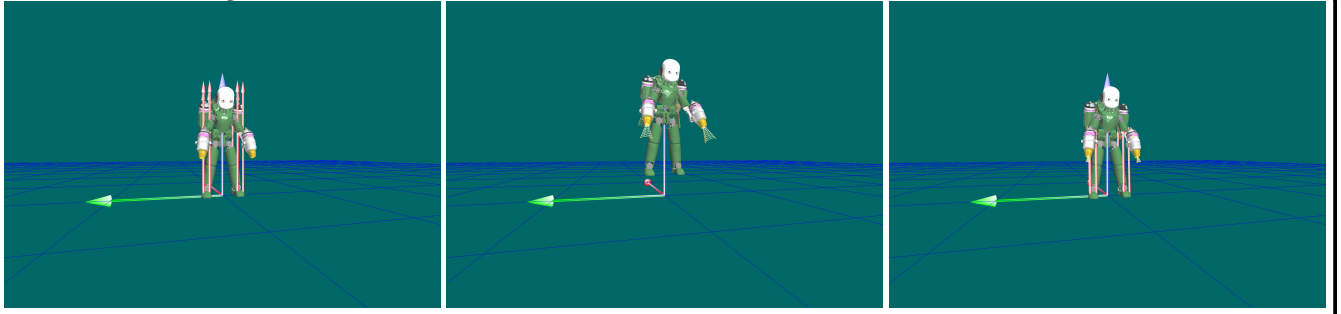
trajectories are shown in Fig 2a. We used high weights on joint velocity to obtain a slower motion of the robot.

B. Vertical Take-off and Landing

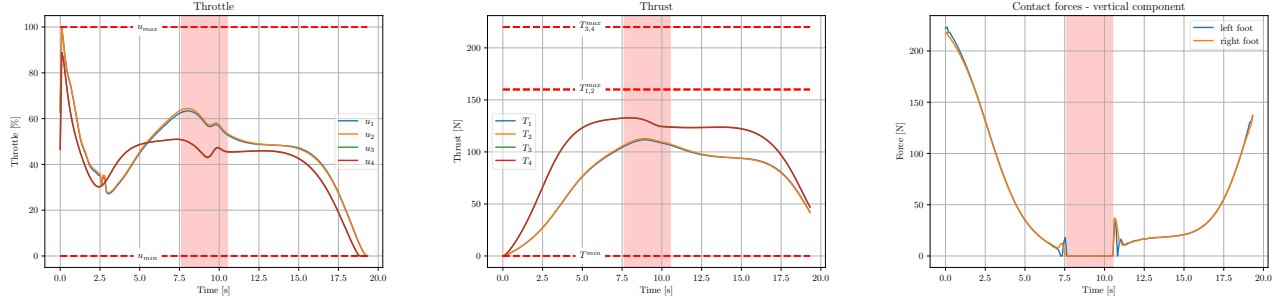
Different from the scenarios above, the second context we test our approach is a vertical take-off and landing that shall be generated as a single instance of the optimisation problem. For this reason, we need to increase the number of knots of the optimisation horizon to 200. The initial and final CoM position is set to 0.57 m while at the intermediate knot we request a CoM height higher than 0.7 m. Snapshots of this manoeuvre are in Fig 3a. The robot decreases the contact forces and increases the thrust. The trajectory of the CoM reaches the maximum height and smoothly comes back to the initial position. Note that the weights in the cost function need to be tuned properly, otherwise the trajectory would resemble more a jump than take-off and landing.

C. Walking to Flight transition

We test our approach in a context in which two different locomotion patterns are mixed. The robot starts at an initial CoM position at 0.57 m and transitions from walking to flying locomotion going 0.9 m forward and reaching 0.7 m. The number of knots of the optimisation horizon is equal to 100. Snapshots of this behaviour are in Fig 4a. The robot moves a few steps forward while increasing the thrust. Eventually, the contacts break and the robot detaches from the ground. Note



(a) Snapshots of the robot taking-off and landing.



(b) Trajectories of throttle, thrust and total vertical component of the contact forces during the take-off and landing. The red band represents the flight phase.

Fig. 3. Snapshots and trajectories of the robot during the take-off and landing.

that the contact sequence in the legged locomotion phase is not predefined and emerges directly from the formulation.

D. Jumping

To validate the approach for generating multimodal locomotion, the fourth scenario consists of the robot taking a jump. The number of optimisation knots is set to $N = 60$. The initial and the final CoM position height equal 0.57 m. We add an additional constraint on the CoM height at the middle-knot $x[N/2] \geq 0.75$ m. The CoM height decreases and then accelerates vertically until the contacts break. After the flight phase, the robot lands and returns to the initial configuration.

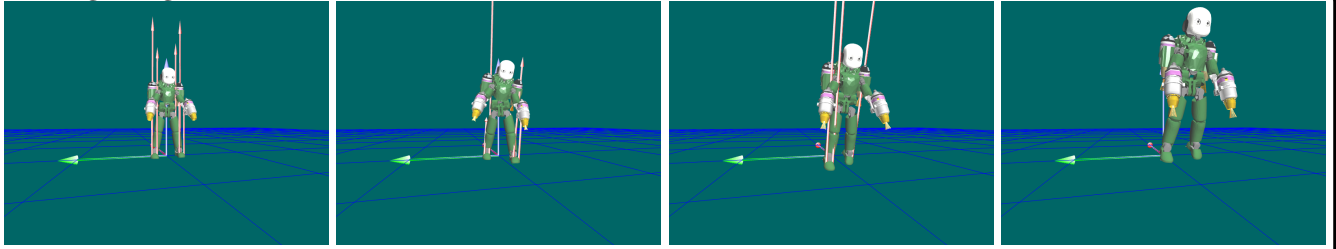
VI. CONCLUSIONS

This work proposes an extension of the so-called *kino-dynamic* planning to platforms that have multimodal locomotion capabilities, such as a flying humanoid robot. We formulate the trajectory planner as an optimisation problem, which optimises the contact sequence and robot motions, subject to the jet dynamics. Numeric examples with the model of iRonCub, our flying humanoid robot, show the effectiveness of the proposed approach. The trajectory optimisation can generate take-off and landing motion, as well as more general behaviours such as gait patterns or jumping. Large computational time makes our trajectory optimisation suitable for planning purposes rather than as a control strategy. Future work focuses on the design of a whole-body control that stabilizes the generated trajectories.

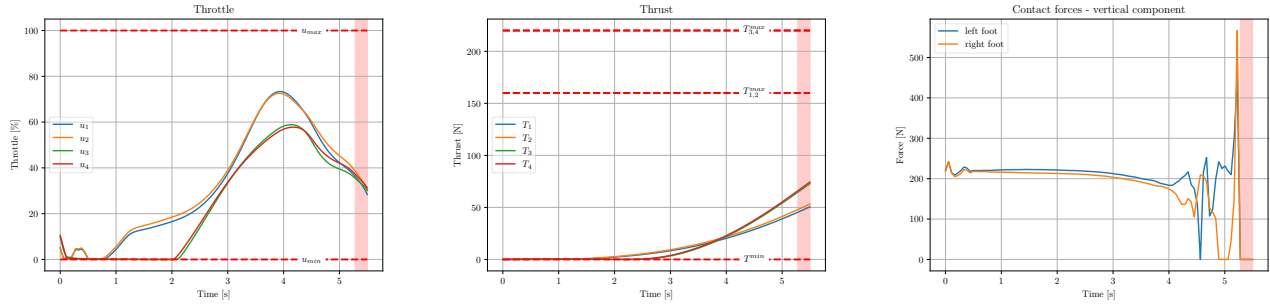
REFERENCES

- [1] M. Pitonyak and F. Sahin, "A novel hexapod robot design with flight capability," in *2017 12th System of Systems Engineering Conference (SoSE)*, 2017, pp. 1–6.
- [2] A. Bozkurt, A. Lal, and R. Gilmour, "Aerial and terrestrial locomotion control of lift assisted insect biobots," in *2009 Annual International Conference of the IEEE Engineering in Medicine and Biology Society*. IEEE, 2009, pp. 2058–2061.
- [3] A. Kalantari and M. Spenko, "Design and experimental validation of hytaq, a hybrid terrestrial and aerial quadrotor," in *2013 IEEE International Conference on Robotics and Automation*, 2013, pp. 4445–4450.
- [4] G. Nava, L. Fiorio, S. Traversaro, and D. Pucci, "Position and Attitude Control of an Underactuated Flying Humanoid Robot," in *2018 IEEE-RAS 18th International Conference on Humanoid Robots (Humanoids)*, 2018, pp. 1–9.
- [5] L. Daler, S. Mintchev, C. Stefanini, and D. Floreano, "A bioinspired multi-modal flying and walking robot," *Bioinspiration & biomimetics*, vol. 10, no. 1, p. 016005, 2015.
- [6] K. Kondak, A. Ollero, I. Maza, K. Krieger, A. Albu-Schaeffer, M. Schwarzbach, and M. Laiacker, "Unmanned aerial systems physically interacting with the environment. load transportation, deployment and aerial manipulation," *Handbook of unmanned aerial vehicles*, vol. 1, 2013.
- [7] K. Kim, P. Spieler, E.-S. Lupu, A. Ramezani, and S.-J. Chung, "A bipedal walking robot that can fly, slackline, and skateboard," *Science Robotics*, vol. 6, no. 59, p. eabf8136, 2021.
- [8] D. Xilun, G. Pin, X. Kun, and Y. Yushu, "A review of aerial manipulation of small-scale rotorcraft unmanned robotic systems," *Chinese Journal of Aeronautics*, vol. 32, no. 1, pp. 200–214, 2019.
- [9] F. Ruggiero, V. Lippiello, and A. Ollero, "Aerial Manipulation: A Literature Review," *IEEE Robotics and Automation Letters*, vol. 3, no. 3, pp. 1957–1964, 7 2018.
- [10] S. M. LaValle, "Rapidly-exploring random trees : a new tool for path planning," *The annual research report*, 1998.
- [11] S. M. LaValle and J. J. Kuffner Jr, "Randomized kinodynamic planning," *The international journal of robotics research*, vol. 20, no. 5, pp. 378–400, 2001.

Walking to flight transition



(a) Snapshots of the transition from walking to flight



(b) Trajectories of throttle, thrust and total vertical component of the contact forces during the transition from walking to flying. The red band represents the flight phase.

Fig. 4. Snapshots and trajectories of the transition from walking to flight.

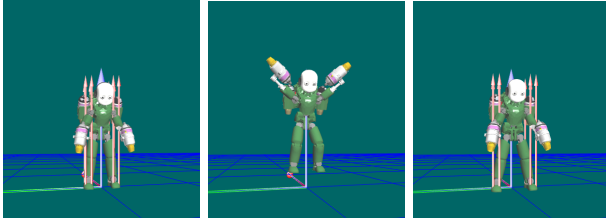


Fig. 5. Snapshots of the robot jumping.

- [12] C. Richter, A. Bry, and N. Roy, "Polynomial trajectory planning for aggressive quadrotor flight in dense indoor environments," in *Robotics research*. Springer, 2016, pp. 649–666.
- [13] R. Naldi, M. Furci, R. G. Sanfelice, and L. Marconi, "Robust global trajectory tracking for underactuated vtol aerial vehicles using inner-outter loop control paradigms," *IEEE Transactions on Automatic Control*, vol. 62, no. 1, pp. 97–112, 2016.
- [14] T. Lee, M. Leok, and N. H. McClamroch, "Geometric tracking control of a quadrotor uav on se (3)," in *49th IEEE conference on decision and control (CDC)*. IEEE, 2010, pp. 5420–5425.
- [15] M. Posa, C. Cantu, and R. Tedrake, "A direct method for trajectory optimization of rigid bodies through contact," *The International Journal of Robotics Research*, vol. 33, no. 1, pp. 69–81, 2014.
- [16] S. Kajita, F. Kanehiro, K. Kaneko, K. Fujiwara, K. Harada, K. Yokoi, and H. Hirukawa, "Biped walking pattern generation by using preview control of zero-moment point," in *2003 IEEE International Conference on Robotics and Automation*, vol. 2. IEEE, 2003, pp. 1620–1626.
- [17] T. Takenaka, T. Matsumoto, and T. Yoshiike, "Real time motion generation and control for biped robot -1st report: Walking gait pattern generation-," in *2009 IEEE/RSJ International Conference on Intelligent Robots and Systems*, 2009, pp. 1084–1091.
- [18] D. E. Orin, A. Goswami, and S.-H. Lee, "Centroidal dynamics of a humanoid robot," *Autonomous robots*, vol. 35, no. 2, pp. 161–176, 2013.
- [19] G. Romualdi, S. Dafarra, G. L'Erario, I. Sorrentino, S. Traversaro, and D. Pucci, "Online non-linear centroidal mpc for humanoid robot locomotion with step adjustment," in *2022 International Conference*

- on Robotics and Automation (ICRA)*, 2022, pp. 10412–10419.
- [20] H. Dai, A. Valenzuela, and R. Tedrake, "Whole-body motion planning with centroidal dynamics and full kinematics," in *2014 IEEE-RAS International Conference on Humanoid Robots*, 2014, pp. 295–302.
- [21] S. Dafarra, G. Romualdi, G. Metta, and D. Pucci, "Whole-Body Walking Generation using Contact Parametrization: A Non-Linear Trajectory Optimization Approach," *Proceedings - IEEE International Conference on Robotics and Automation*, pp. 1511–1517, 5 2020.
- [22] A. Herzog, S. Schaal, and L. Righetti, "Structured contact force optimization for kino-dynamic motion generation," in *2016 IEEE/RSJ International Conference on Intelligent Robots and Systems (IROS)*. IEEE, 2016, pp. 2703–2710.
- [23] D. Pucci, S. Traversaro, and F. Nori, "Momentum control of an underactuated flying humanoid robot," *IEEE Robotics and Automation Letters*, vol. 3, no. 1, pp. 195–202, 2017.
- [24] G. L'Erario, L. Fiorio, G. Nava, F. Bergonti, H. A. O. Mohamed, E. Benenati, S. Traversaro, and D. Pucci, "Modeling, identification and control of model jet engines for jet powered robotics," *IEEE Robotics and Automation Letters*, vol. 5, no. 2, pp. 2070–2077, 2020.
- [25] M. S. Lobo, L. Vandenberghe, S. Boyd, and H. Lebret, "Applications of second-order cone programming," *Linear Algebra and its Applications*, vol. 284, no. 1-3, pp. 193–228, 1998.
- [26] J. T. Betts, *Practical Methods for Optimal Control and Estimation Using Nonlinear Programming*, 2nd ed. USA: Cambridge University Press, 2009.
- [27] J. Sola, J. Deray, and D. Atchuthan, "A micro lie theory for state estimation in robotics," *arXiv preprint arXiv:1812.01537*, 2018.
- [28] J. A. E. Andersson, J. Gillis, G. Horn, J. B. Rawlings, and M. Diehl, "CasADi – A software framework for nonlinear optimization and optimal control," *Mathematical Programming Computation*, vol. 11, no. 1, pp. 1–36, 2019.
- [29] A. Wächter and L. T. Biegler, "On the implementation of an interior-point filter line-search algorithm for large-scale nonlinear programming," *Mathematical programming*, vol. 106, no. 1, pp. 25–57, 2006.
- [30] L. Natale, C. Bartolozzi, D. Pucci, A. Wykowska, and G. Metta, "iCub: The not-yet-finished story of building a robot child," *Science Robotics*, vol. 2, no. 13, 2017. [Online]. Available: <https://robotics.sciencemag.org/content/2/13/eaq1026>