

FUCOM-MOORA and FUCOM-MOOSRA: new MCDM-based knowledge-driven procedures for mineral potential mapping in greenfields

Original

FUCOM-MOORA and FUCOM-MOOSRA: new MCDM-based knowledge-driven procedures for mineral potential mapping in greenfields / Feizi, Faranak; Abbas KarbalaeiRamezanali, Amir; Farhadi, Sasan. - In: SN APPLIED SCIENCES. - ISSN 2523-3971. - 3:(2021). [10.1007/s42452-021-04342-9]

Availability:

This version is available at: 11583/2974208 since: 2022-12-29T08:17:58Z

Publisher:

Springer Nature

Published

DOI:10.1007/s42452-021-04342-9

Terms of use:

This article is made available under terms and conditions as specified in the corresponding bibliographic description in the repository

Publisher copyright

(Article begins on next page)



Research Article

FUCOM-MOORA and FUCOM-MOOSRA: new MCDM-based knowledge-driven procedures for mineral potential mapping in greenfields

Faranak Feizi¹ · Amir Abbas Karbalaeei-Ramezani² · Sasan Farhadi³

Received: 2 November 2020 / Accepted: 4 February 2021 / Published online: 22 February 2021

© The Author(s) 2021 [OPEN](#)

Abstract

In this study, we present the application of two novel hybrid multiple-criteria decision-making (MCDM) techniques in the mineral potential mapping (MPM), namely FUCOM-MOORA and FUCOM-MOOSRA, as robust computational frameworks for MPM. These were applied to a set of exploration targeting criteria of skarn. The multi-objective optimization method on the basis of ratio analysis (MOORA) and the multi-objective optimization on the basis of simple ratio analysis (MOOSRA) approaches are used to prioritize and rank individual cells. What makes MOORA and MOOSRA more reliable compared to many other methods is the fact that the optimizations procedure is applied to calculate the prospectivity score of individual unit cells. This reduces the uncertainty stemming from erroneous mathematical calculations. The full consistency method (FUCOM), on the other hand, is useful for assigning weights to the spatial proxies. The FUCOM method, as a pairwise comparison method, reduces a large number of pairwise comparisons of similar and popular approaches such as analytic hierarchy process (AHP) with $n(n - 1)/2$ and the best-worst method (BWM) with $2n - 3$ number of pairwise comparisons with $n - 1$ which leads to a less time-consuming and more consistent performance compared with AHP and BWM. These were applied to a set of exploration targeting criteria of skarn iron deposits from Central Iran. Two potential maps were retrieved from the procedures applied, the comparison of which using correct classification rates and field checks revealed the superiority of FUCOM-MOOSRA over the FUCOM-MOORA.

Keywords Mineral potential mapping · MCDM · FUCOM · MOORA · MOOSRA · Skarn iron deposits

1 Introduction

A great deal of attention has been recently focused on greenfields' mineral potential mapping (MPM), in which the intent is to reduce the search space for the possible detailed surveys (e.g., [24, 44, 79, 82, 91, 92, 96, 97, 112, 125]). In these studies, expert-based methods are applied for weighting and integrating exploration targeting criteria into potential maps. Of the various expert-based methods employed in this context, multi-criteria decision-making (MCDM) methods have gained a considerable

reputation (e.g., [8, 14, 89, 95, 100, 102]). These methods are either comparison-based or matrix-based approaches [71]. The former and the latter methods are used for assigning weights to the targeting criteria and integrating the weighted criteria into potential maps, respectively.

The matrix-based MCDM methods are often too complex [26, 77, 142, 143], making it challenging decision makers to follow their mathematical procedures. The multi-objective optimization method on the basis of ratio analysis (MOORA: [21]) and the multi-objective optimization on the basis of simple ratio analysis (MOOSRA: [32])

✉ Faranak Feizi, faranakfeizi@gmail.com | ¹Department of Petroleum and Mining Engineering, South Tehran Branch, Islamic Azad University, Tehran, Iran. ²Young Researchers and Elite Club, South Tehran Branch, Islamic Azad University, Tehran, Iran. ³Department of Environment, Land and Infrastructure Engineering, Polytechnic University of Turin, Turin, Italy.



have been proposed to provide more straightforward mathematical procedures to follow. Notwithstanding the robustness and myriad applications of these methods (e.g., MOORA: [4, 20, 22, 25, 47, 48, 70, 84, 98, 103, 137], MOOSRA: [7, 11, 33, 75, 116, 129, 137]), seldom have they been applied to the context of MPM.

The comparison-based methods and, on the other hand, a large number of pair-wise comparisons (e.g., AHP: [113], BWM: [109]) make these methods time-consuming and less consistent (e.g., [9, 42, 83, 89, 99, 100, 102, 124]). The full consistency method (FUCOM: [94]), a novel comparison-based procedure, has reduced the number of comparisons required. This method results in a higher consistency ratio by determining the deviation from utmost consistency ([12, 17, 35, 94, 105]) compared to those of similar procedures, making its outputs more reliable. Although this method has been applied in different decision-making procedures (e.g., [12, 17, 18, 35, 41, 90, 105, 127]), it is yet to be applied in MPM.

The intent of this study is to showcase the application of two novel hybrid MCDM techniques in MPM, namely FUCOM-MOORA and FUCOM-MOOSRA. The FUCOM technique was used in various scientific fields after it was published in 2018 because of two outstanding reasons: (1) this approach has reduced the number of comparisons required (which is less time-consuming) and (2) has more reliable outputs in comparison with previous approaches [17, 35, 94]; however, this method has been never used in MPM. In addition of applying the FUCOM method in MPM, we combined it to MOORA and MOOSRA to present two-step methodologies, namely FUCOM-MOORA and FUCOM-MOOSRA. MOORA and MOOSRA, like the FUCOM approach, have been never used in MPM. MOORA and MOOSRA with approximately similar and authentic mathematical backgrounds have been well validated in various scientific fields based on comparison with other methods. The superiority of MOORA and MOOSRA methods in comparison with other similar methods is related to the optimization procedure in their mathematical theory, which reduces the uncertainty stemming from erroneous mathematical calculations and causes having more reliable outputs [7, 33, 98, 129, 137]. In this paper, FUCOM-MOORA and FUCOM-MOOSRA were applied on a set of regional-scale targeting criteria of iron skarn deposits from Varan area in Central Iran to show the robustness of the proposed approaches in MPM. The intrusion of the Eocene plutonic rocks into the sediments of Qom formation, Cretaceous in age, yielded several cases of calcic skarn iron mineralization in the study area.

2 Methods

2.1 FUCOM

The full consistency method (FUCOM: [94]) is a comparison-based MCDM procedure applying the principles of pairwise comparison and deviation from maximum consistency [18, 35, 94, 136]. FUCOM requires only $n - 1$ pairwise comparisons for assigning weights to n mappable targeting criteria in MPM. The deviation from maximum consistency (DMC) of comparisons is used for validating the results of FUCOM [18].

FUCOM is implemented with regard to the following steps [18, 35, 94, 136]:

Step 1: The set of exploration targeting criteria, $C = \{C_1, C_2, \dots, C_n\}$, are initially ranked according to their importance; that is, the higher the initial rank is, the more critical the criterion is to mineralization. This is shown by the following formulation:

$$C_{j(1)} > C_{j(2)} > \dots > C_{j(k)}. \quad (1)$$

Step2: The ranking criteria are compared and the comparative priority ($\varphi_{k/(k+1)}$, $k = 1, 2, \dots, n$, in which k represents the rank of the criteria) of the criteria is determined according to Eq. (2):

$$\varphi = (\varphi_{1/2}, \varphi_{2/3}, \dots, \varphi_{k/(k+1)}). \quad (2)$$

Step3: Weight coefficients of the targeting criteria (w_1, w_2, \dots, w_n)^T are calculated. These values should meet the following conditions:

1. The weight coefficients (w_k) are proportional to the comparative priorities (φ_k) :

$$\frac{w_k}{w_{k+1}} = \varphi_{k/(k+1)}. \quad (3)$$

2. The mathematical transitivity must be met among all the comparative priorities (φ_k) :

$$\varphi_{k/(k+1)} \times \varphi_{(k+1)/(k+2)} = \varphi_{k/(k+2)}. \quad (4)$$

Step 4: The following optimization problem should be solved for calculating the optimal weights (w_1, w_2, \dots, w_n)^T of the targeting criteria:

Min X

s.t.

$$\begin{aligned} \left| \frac{w_{j(k)}}{w_{j(k+1)}} - \varphi_{k/k+1} \right| &= X, \quad \forall j \\ \left| \frac{w_{j(k)}}{w_{j(k+2)}} - \varphi_{k/(k+1)} \times \varphi_{(k+1)/(k+2)} \right| &= X, \quad \forall j \\ \sum_{j=1}^n w_j &= 1 \\ w_j &\geq 0, \forall j. \end{aligned} \tag{5}$$

2.2 MOORA

The multi-objective optimization method on the basis of ratio analysis (MOORA) has been proposed by Brauers and Zavadskas [21]. This method can be applied for integrating a set of weighted targeting criteria (cf. [10,25]) into maps of mineral potential. In the first step, targeting criteria are marked by positive and negative signs. The positive sign refers to the criteria in which higher values should be prioritized. Negative criteria, on the other hand, are those in which lower values are more important (cf. [25]). Next, the following matrix is developed in which m and n refer to the number of unit cells in the area and the number of targeting criteria, respectively [23]:

$$X = \begin{bmatrix} x_{11} & \dots & x_{1j} & \dots & x_{1n} \\ x_{21} & \dots & x_{2j} & \dots & x_{2n} \\ \dots & \dots & \dots & \dots & \dots \\ x_{i1} & \dots & x_{ij} & \dots & x_{in} \\ \dots & \dots & \dots & \dots & \dots \\ x_{m1} & \dots & x_{mj} & \dots & x_{mn} \end{bmatrix}. \tag{6}$$

For individual targeting criteria, each x_{ij} in the above matrix is normalized to x_{ij}^* in which the values vary in a [0, 1] range. This is implemented according to the following equation [23]:

$$x_{ij}^* = \frac{x_{ij}}{\left[\sum_{i=1}^m x_{ij}^2 \right]^{\frac{1}{2}}} \quad (j = 1, 2, \dots, n). \tag{7}$$

Finally, the potential values assigned to individual unit cells, y_i , are derived from the following optimization function [10, 25, 70]:

$$y_i = \sum_{j=1}^g w_j x_{ij}^* - \sum_{j=g+1}^n w_j x_{ij}^* \tag{8}$$

where g is the number of positive criteria [21] and w_j refers to weight of j th criterion [19, 73].

3 MOOSRA

The multi-objective optimization on the basis of simple ratio analysis (MOOSRA: [32]) is a matrix-based MCDM, with its procedure bearing a striking resemblance to that of MOORA [12]. The matrix alignment and the normalization of arrays in MOOSRA are identical to those of MOORA. However, the optimization procedure used for deriving the potential values assigned to individual unit cells is applied according to Eq. (9) as follows [11,32]:

$$y_i^* = \frac{\sum_{j=1}^g w_j x_{ij}^*}{\sum_{j=g+1}^n w_j x_{ij}^*} \tag{9}$$

where g and w_j refer to the number of positive criteria and the weight assigned to the j th criterion, respectively.

4 The Varan area and input data

4.1 Geological setting and the deposit model

The NW–SE trending metallogenic belt of Zagros [46, 121, 123, 139], as a segment of Alpine-Himalayan orogenic system [27, 93, 110, 117, 128] in the western section of Tethyan domain [63, 67, 132, 134, 135], is developed by the collision of the Arabian and Eurasia platforms [52, 87, 108, 126, 131] (Fig. 1). The Zagros orogenic belt includes three aligned tectonic zones of (1) the Zagros fold–thrust belt, (2) the Sanandaj–Sirjan magmatic–metamorphic zone, and (3) the tertiary Urumieh–Dokhtar magmatic belt (UDMB) [5, 6, 60, 118, 122]. The Varan area is situated in the UDMB (Fig. 2) resulted from a convergent tectonic regime [2, 3, 31, 66, 141]. This Andean volcanic arc, having extended over a length of some 2000 km, hosts plutonic complexes included intrusive, extrusive, and volcano-sedimentary units post Eocene volcanic, plutonic, and volcanic–sedimentary complexes [31, 60, 61, 66, 69, 74, 115, 119, 138, 141]. The magmatism of the UDMB is associated with continual steps of the Neo-Tethys closure within Paleogene–Neogene times, started at ~ 50 Ma [16], continued into middle Eocene, and followed by magmatic activities of Oligocene–Miocene intrusions [2, 3, 141]. The magmatism of UDMB is of calc–alkaline affinity [60, 61, 69, 138, 141]. However, Jamali et al. [65] stated alkaline rocks locally, related to younger plutonic activity in some components of the UDMB. This tectonic setting emplaced extensive magmatism constituting the trigger and heat source, and the convection forces developed a vast array of metallic ore deposits [51], especially copper [58, 104, 139, 140, 141] and Iron [42, 81, 83, 88, 138]. According to

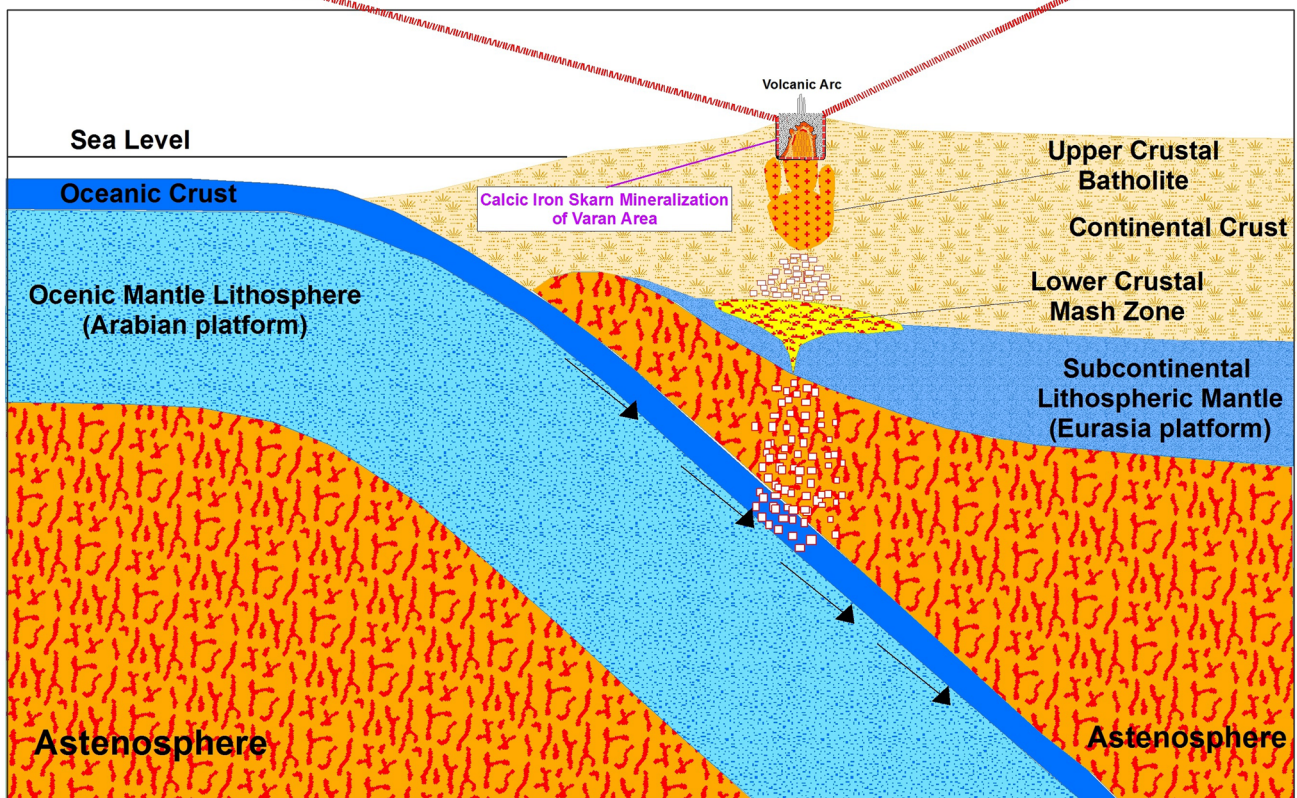
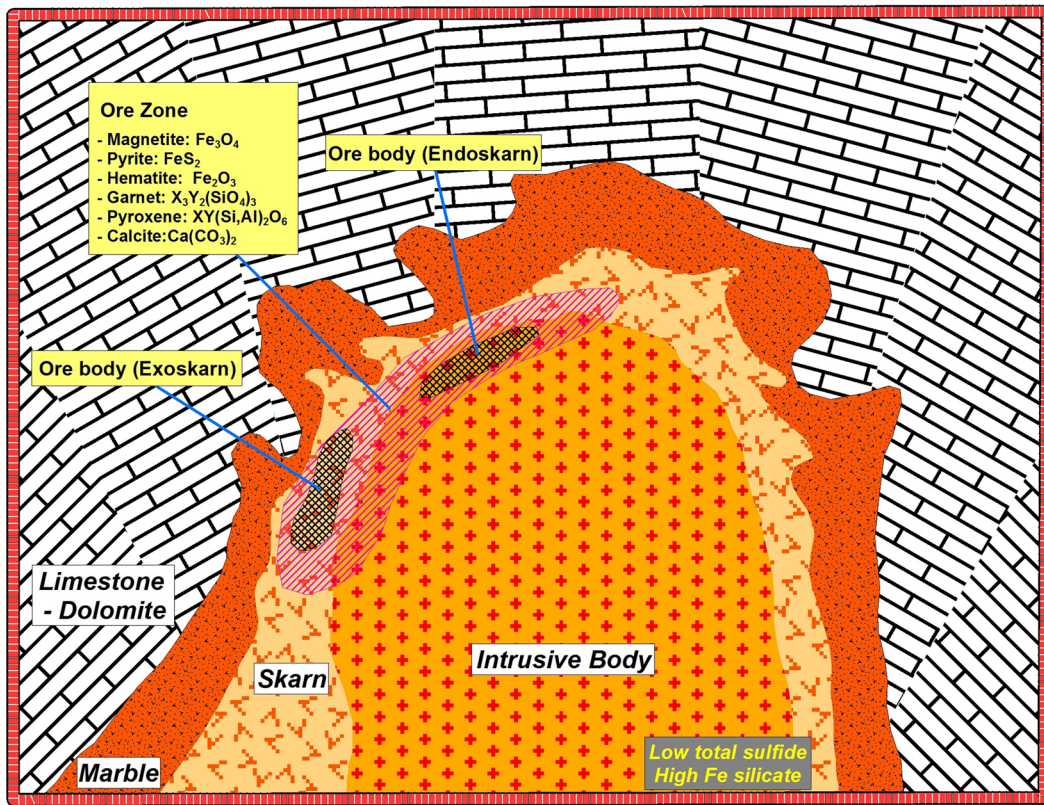


Fig. 1 Schematic image of the geodynamic evolution of Urumieh–Dokhtar magmatic arc in associated with the formation calcic skarn iron (modified after Guilbert and Lowell [54] and Meinert [86])

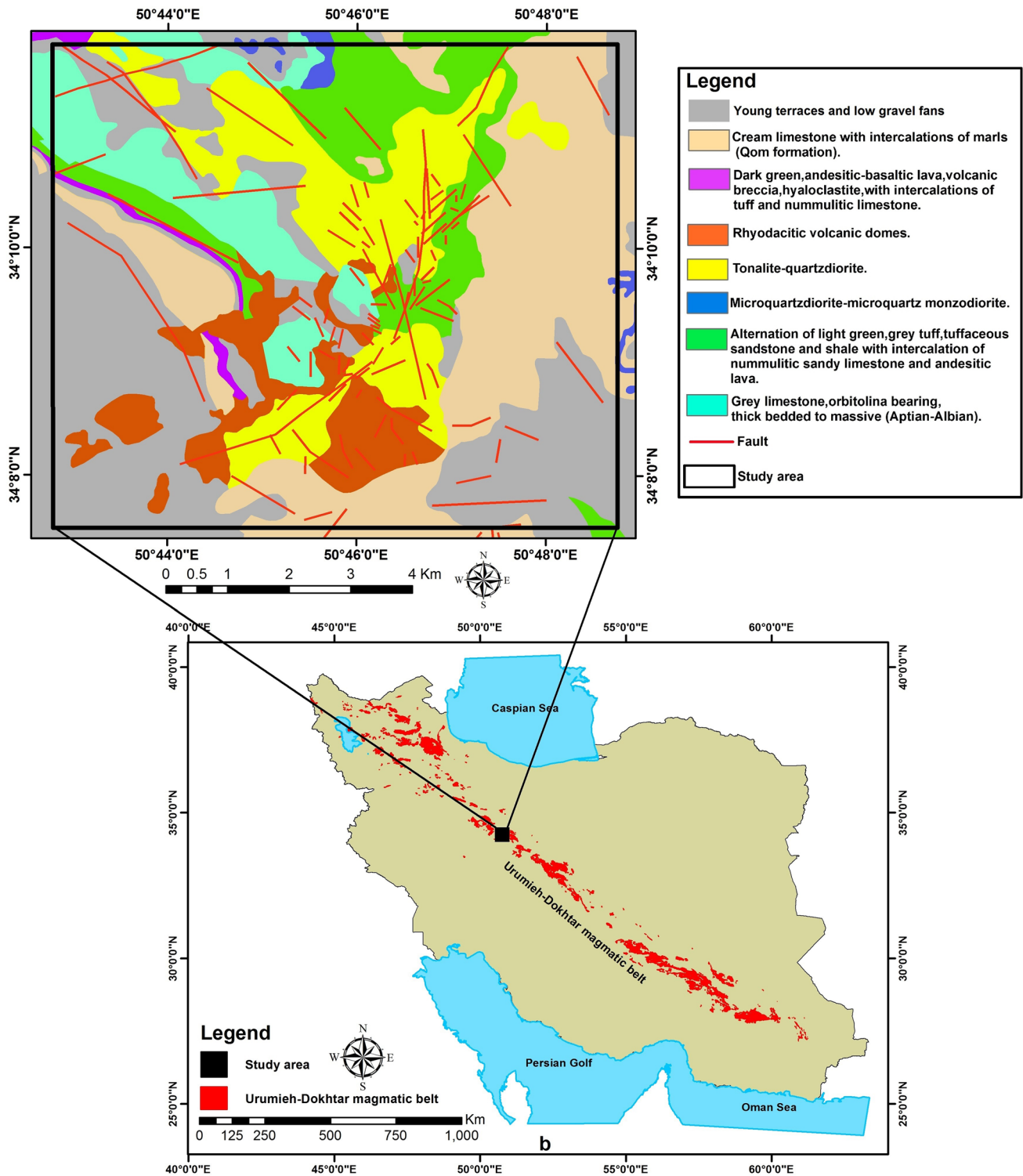


Fig. 2 Location of study area on the Urumieh–Dokhtar magmatic arc and the generalized geological map of the area (modified after Ghalamghash and Babakhani [49])

the existence of carbonate rocks, which are mostly older than plutonic complexes of the UDMB (mainly at the age of Cretaceous), there is remarkable potential for skarn mineralization in this tectonic setting.

Skarn mineralization is genetically and temporally associated with mafic to intermediate plutons that intruded an older sedimentary basement comprising limestones and dolostones [15, 28–30, 34, 36–38, 53, 55, 57, 86, 120]. Three

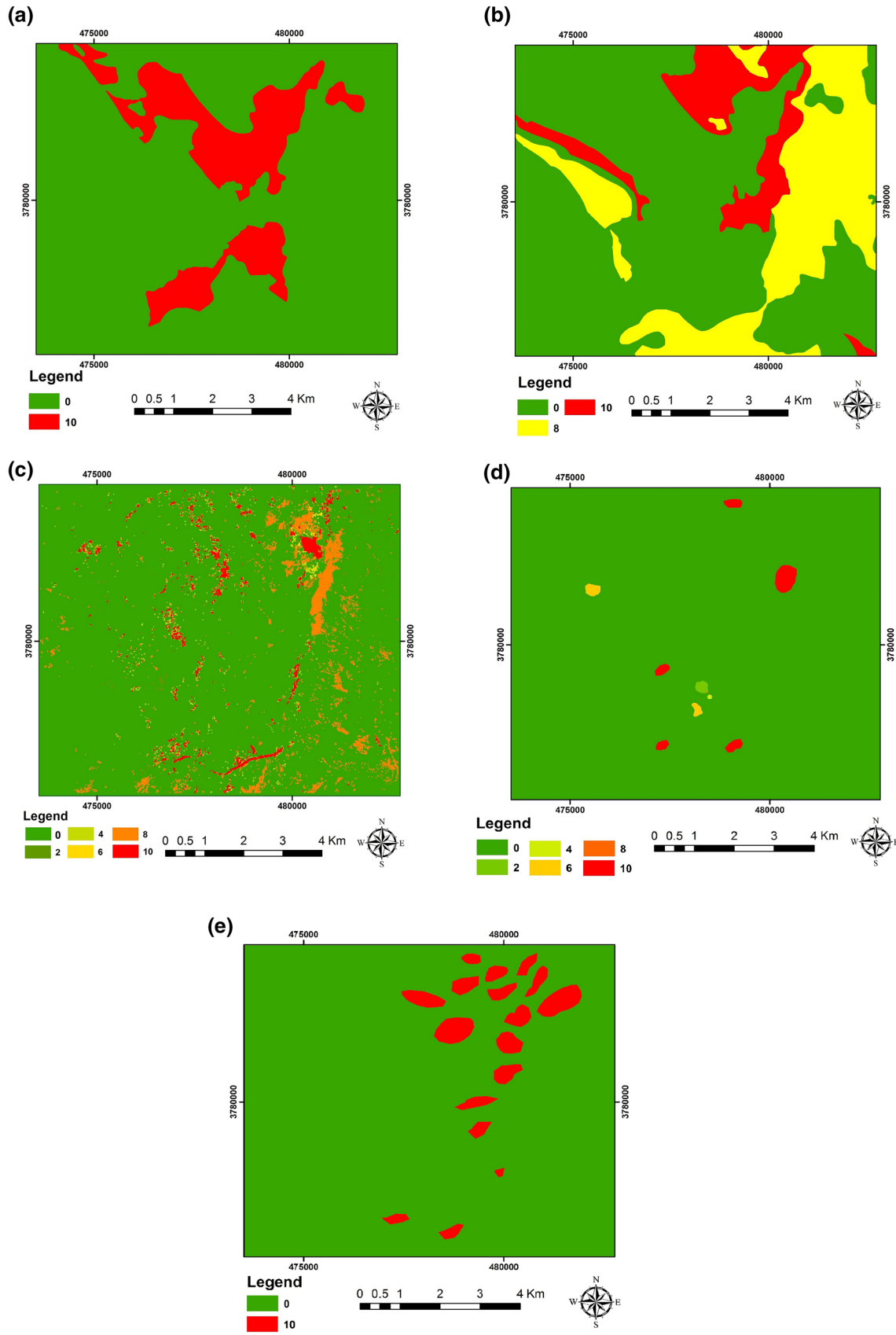


Fig. 3 Targeting criteria derived from mineral systems approach: **a** outcropping tonalities and quartz diorites representing the source, **b** outcropping calcareous sediments representing the physiochemical trap, **c** distribution of ore-related minerals representing the depositional processes, **d** uni-elemental litho-geochemical anomalies representing the depositional processes, **e** and geophysical anomalies representing the depositional processes

consecutive steps occur are required for developing skarn mineralization: (a) contact metamorphism, (b) ascending the temperature of the plutonic body and the release of ore-bearing content, and (c) developing the ore-bearing and alteration mineral assemblages [56]. Steps b and c are associated with skarn mineralization and deposition [56]. This style of mineralization can be divided into two categories that include endoskarn or exoskarn on the basis of the host rock [34, 40–38, 56, 86]. Endo- and exoskarns are the consequences of replacements of intrusive rocks within the contact zone and carbonate host rocks at or near the contact, respectively [36, 86]. Fe skarn deposits are associated with magnetite mineralization in calc–silicate contact metasomatic rocks, which can be categorized into two groups including calcic and magnesian skarn irons [28, 36, 37, 42, 81, 83, 86, 138]. The former is mostly developed by the replacement of limestone, tending to occur in convergent tectonic environments, especially in island arc settings. The latter, however, is mostly developed by the replacement of dolomite and is associated with orogenic belts along continental margins [28, 34, 36, 37, 86]. The majority of the world's economic iron skarn deposits are calcic iron, while magnesian iron skarns are less documented [38]. Calcic skarn iron deposits are large deposits averaging some 300 million tons of iron content [133]. Calcic skarn irons are characterized by less silicic intrusions compared with magnesian skarns, minor amount of alkaline rocks, somewhat great amount of endoskarn mineralization, the extensive event of Na metasomatism, in association with magnetite, pyrite, hematite, garnet, pyroxene, and calcite, with geochemical enrichments of Fe, Cu, Zn, Au, and As [28, 34, 36, 37, 42, 56, 106]. Magnesian iron skarns are characterized by more silicic intrusions compared with calcic skarns, mostly occurred in dolomitic strata, in association with magnetite, forsterite, spinel, diopside, apatite, tremolite, phlogopite, talc, amphibole, serpentine, talc, chlorite, chondrodite, magnesite, and clinohumite [36, 37, 55–57].

Most of the skarns are related to magmatic arcs and subduction zones, which also host porphyry copper deposits [55] such as the UDMB which has the same situation. Iron deposits of Iran, especially the ones located in the UDMB, are the consequence of magmatic activities pending Eocene to Miocene [122]. The Sarvian deposit, hosting some 2 million tons of Iron [138], is one of the calcic skarn irons of the UDMB [83], situated in the Varan area.

This deposit is resulted from a quartz diorite intruding an early Permian to Tertiary limestone of Qom formation, with the temperature of 370–550 °C according to Garnet–pyroxene thermometry [138]. Mansouri et al. [83] implemented successfully the potential mapping of calcic skarn iron in the Sarvian area, which is considered in this study for the Varan area, with using intrusive rocks of tonalites and quartz diorites as the source of mineralization, a reduced-to-pole map of ground magnetic data representing a further proxy for the source, the outcropping limestones and skarn units representing the trap; uni-element geochemical signatures of ore-related elements derived from litho-geochemical samples including Fe, Cu, Zn, Au, and As; and the remotely sensed derived accumulation of minerals include magnetite, pyrite, hematite, garnet, pyroxene, and calcite. Figure 1 shows a schematic representation of the subduction-related tectonic regime and ore formation model of calcic skarn iron deposit in the Varan area (after Lowell and Guilbert 1978).

The Varan area is marked by the presence of Eocene plutonic rocks and the sediments of Qom formation, Cretaceous in age [49]. The intrusion of the former into the latter yielded several cases of calcic skarn iron mineralization in the area [42]. Figure 2 depicts a simplified geological map of the study area, thoroughly discussed in Feizi et al. [43]. In the area confined by this study, calcic skarn iron mineralization [133] occurs in the contact of basic to intermediate intrusions and crystalline limestones, sandstones, and shales of Qom formation. The Qom formation has been reported as a proper trap of Skarn deposits in the UDMB [42, 81, 83, 88, 138].

4.2 Translating the deposit model to spatial proxies with using mineral system approach

Proper insight into mineral systems leads to defining the exploration targeting criteria in regional- and district-scale exploration targeting systems [62, 80, 85] which should be translated to mappable spatial proxies with the goal of targeting undiscovered mineralization [71, 72, 78, 111]. The same suit of targeting criteria exploited in Feizi et al. [42] was employed to vector toward skarn iron mineralized zones. They used a minerals system framework [76] to translate critical processes to the formation of calcic skarn iron deposits—source, trap, and deposition—to a set of targeting criteria. This set comprises the outcropping tonalites and quartz diorites representing the source of mineralization (Fig. 3a), the outcropping limestones of the Qom formation representing the physiochemical trap (Fig. 3b), the remotely sensed derived accumulation of ore minerals as a criterion representing the deposition (Fig. 3c), uni-element geochemical signatures of ore-related elements derived from litho-geochemical samples

(Fig. 3d), and a reduced-to-pole map of aeromagnetic data representing another proxy for the source (Fig. 3e) (Feizi et al. [42]). Table 1 provides a summary of these criteria. Readers are referred to Feizi et al. [42] for further details.

5 Mineral potential mapping

5.1 Weighting spatial proxies

Spatial proxies for calcic skarn iron mineralization comprising surficial heat sources (C_1), physiochemical trap (C_2), mineral assemblages (C_3), geochemical anomalies (C_4), and subsurficial heat sources (C_5) were procreated (Fig. 3). According to step 1 of FUCOM, the ranking of spatial proxies was determined as $C_1 > C_2 > C_3 > C_4 > C_5$. Then, based on step 2, a comparison was applied based on the ranking criteria, determining the significance (φ_k) of the proxies, which led to computing the comparative priority of the proxies (Table 2). Step 3 was performed to calculate the

final values of the weight coefficients, which satisfied two conditions of Eqs. 3 and 4. (Table 3). After that, Step 4 was accomplished with solving an optimization problem in Lingo software as follows:

$$\begin{aligned} & \text{Min } X \\ & \text{s.t.} \\ & \left| \frac{w_1}{w_3} - 3.4 \right| = X, \left| \frac{w_2}{w_4} - 2.64 \right| = X, \left| \frac{w_3}{w_5} - 1.47 \right| = X \\ & \sum_{j=1}^5 w_j = 1 \\ & w_j \geq 0, \forall j \end{aligned} \tag{5}$$

Thus, the optimal weights (w_1, w_2, \dots, w_n)^T acquired are given in Table 4. The spatial proxies were, therefore, ranked from the most to the least critical as heat sources (C_1 : $w = 0.434$), trap (C_2 : $w = 0.255$), mineral assemblages (C_3 : $w = 0.128$), geochemical anomalies (C_4 : $w = 0.096$), and subsurficial heat sources (C_5 : $w = 0.087$).

Table 1 Mineral systems approach [62, 80, 85] applied for deriving targeting criteria, and the weights assigned to individual classes

| Critical process | Constituent process | Targeting criteria | Class | Score | |
|---------------------|---|---|---------------------------------------|-----------|----|
| Source | Basic to intermediate intrusive rocks | Outcropping tonalites and quartz diorites | Presence | 10 | |
| Physiochemical trap | Calcareous sedimentary sequence, Qom formation | Outcropping calcareous sequences | Outcropping sandy limestones | 10 | |
| | | | Outcropping limestones | 8 | |
| Deposition | Accumulation of certain mineral assemblages including iron-bearing minerals | Mineral assemblages | Magnetite | 10 | |
| | | | Pyrite | 8 | |
| | | | Hematite | 8 | |
| | | | Garnet | 6 | |
| | | | Pyroxene | 4 | |
| | | | Calcite | 2 | |
| | | | RTP-transformed geophysical signature | Anomalies | 10 |
| | | | Geochemical anomalies | Fe | 10 |
| | | | | Cu | 8 |
| | | | | Zn | 6 |
| Au | 4 | | | | |
| | | | As | 2 | |

Table 2 The targeting criteria for calcic iron skarn mineralization and step 2 of FUCOM method

| Spatial proxies | Symbol | Significance (φ_k) | Step 2: the comparative priority of the criteria |
|---------------------------|--------|------------------------------|--|
| Surficial heat sources | C_1 | 1 | $\varphi_{C_1/C_2} = 1.7/1 = 1.7$ |
| Physiochemical trap | C_2 | 1.7 | $\varphi_{C_2/C_3} = 3.4/1.7 = 2$ |
| Mineral assemblages | C_3 | 3.4 | $\varphi_{C_3/C_4} = 4.5/3.4 = 1.32$ |
| Geochemical anomalies | C_4 | 4.5 | $\varphi_{C_4/C_5} = 5/4.5 = 1.11$ |
| Subsurficial heat sources | C_5 | 5 | – |

Table 3 Step 3 and conditions of FUCOM method

| Condition 1 | Condition 2 | Final values of the weight coefficients |
|------------------|---|---|
| $w_1/w_2 = 1.7$ | $\varphi_{C_1/C_3} = \varphi_{C_1/C_2} \times \varphi_{C_2/C_3} = 1.7 * 2 = 3.4$ | $w_1/w_3 = 3.4$ |
| $w_2/w_3 = 2$ | $\varphi_{C_2/C_4} = \varphi_{C_2/C_3} \times \varphi_{C_3/C_4} = 2 * 1.32 = 2.64$ | $w_2/w_4 = 2.64$ |
| $w_3/w_4 = 1.32$ | $\varphi_{C_3/C_5} = \varphi_{C_3/C_4} \times \varphi_{C_4/C_5} = 1.32 * 1.11 = 1.47$ | $w_3/w_5 = 1.47$ |
| $w_4/w_5 = 1.11$ | – | – |

Table 4 Results of the FUCOM approach

| Spatial proxies | Symbol | Weight |
|---------------------------|--------|--------|
| Surficial heat sources | C_1 | 0.434 |
| Physiochemical trap | C_2 | 0.255 |
| Mineral assemblages | C_3 | 0.128 |
| Geochemical anomalies | C_4 | 0.096 |
| Subsurficial heat sources | C_5 | 0.087 |

5.2 Prioritization and ranking of alternatives (pixels)

The targeting criteria were converted to raster maps with a cell size of 50×50 square meters according to the distribution of geochemical samples [59] and flight-line distancing

of aeromagnetic data [64] used in this work. These criteria were converted to the matrix represented in Eq. (6). Given the weights of the FUCOM method in Table 4, Eqs. (7–10) are used for integrating the weighted criteria into maps of mineral potential (Figs. 4, 5).

5.3 Validation of the results

Natural breaks [68] were employed for the initial classification of prospectivity maps (Figs. 4, 5). Nevertheless, for a more robust delineation of exploration targets, favorability–area [9, 42] fractal modeling was employed. Figure 6 represents the favorability–area model applied to the potential maps of MOORA (Fig. 4) and MOOSRA (Fig. 5). This process retrieved two classified maps represented in Figs. 7 and 8. Also, the thresholds derived

Fig. 4 Prospectivity map retrieved from the method of MOORA

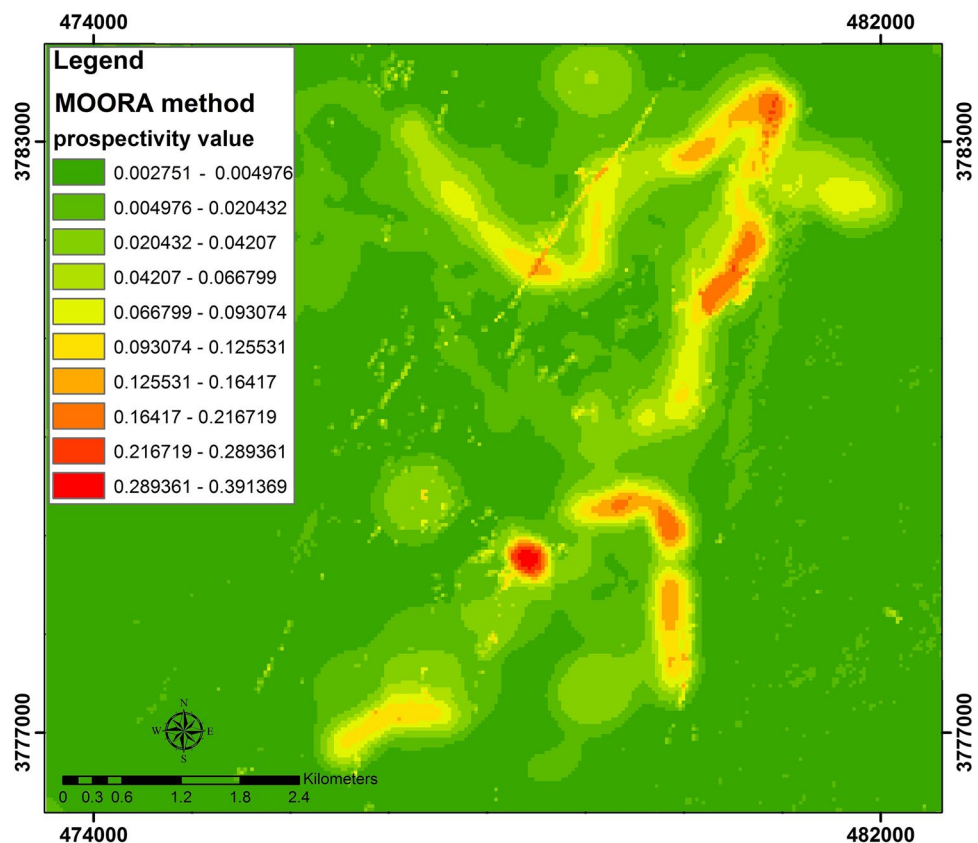
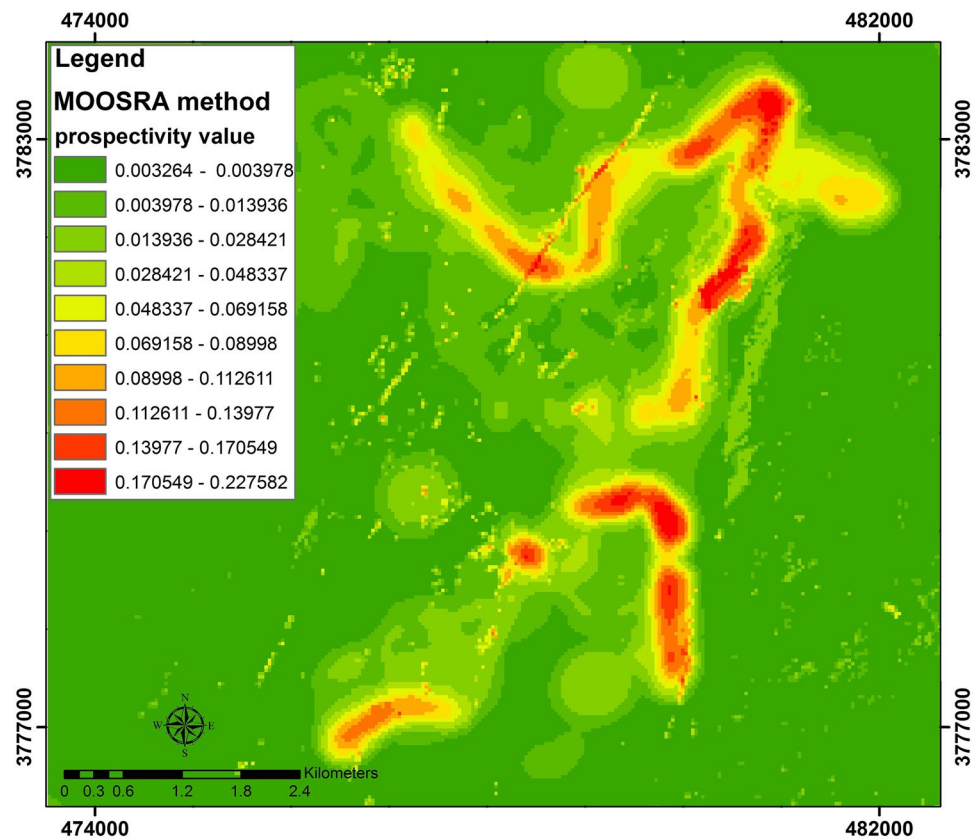


Fig. 5 Prospectivity map retrieved from the method of MOOSRA



from the fractal model are illustrated in Tables 5 and 6. According to these tables and figures, each map is divided into five classes. Field surveys were carried out to ground-check the anomalies derived from the two potential maps. Evidence of skarn iron mineralization has been observed in the area as illustrated in Fig. 9. In each ground control point illustrated in Fig. 9, litho-geochemical sampling was conducted. These samples were analyzed for their iron content using XRF. We sought the opinion of many experts regarding the concentration of iron in calcic skarn iron deposits. The average opinion of experts is represented in Table 7, according to which we classified our collected samples into five classes (Table 7). Table 8 provides a comparative tool through which one can opt for the more robust potential map. According to the result of the last column in Table 8, the accuracy of the MOOSRA method is 80% (8 correct predictions of 10), but the MOORA method is 70% (7 correct predictions of 10). Based on this comparison, the method of MOOSRA outperformed MOORA in MPM.

In addition, with respect to high prospective classes retrieved from the two methods, the method of MOOSRA is superior to MOORA. This is because the former has reduced the search space to some 1.7 square kilometers, while this number is some 3.7 square kilometers for the

latter (cf. [79]). An illustration of this comparison is provided in Fig. 10.

We also applied confusion matrixes [1, 71] to compare the two modeling methods using the correct classification rate (CCR) (Tables 9, 10). We qualitatively translate the values of very low, low, moderate, high, and very high derived from Table 8 into the values of 1, 2, 3, 4, and 5, respectively. The sum of values of diagonal lines in confusion matrixes is divided by the total number of control points, which is 10 in this study. The value of CCR is therefore 0.7 and 0.8 for MOORA and MOOSRA, respectively. This also implies that MOOSRA provides a more robust map of mineral potential.

6 Discussion

Several multi-criteria decision-making (MCDM) methods, which have their advantages and disadvantages [42, 71, 100–102], have been applied to knowledge-driven GIS-based issues, such as mineral potential mapping studies (e.g., [13, 40, 45, 50, 107, 114, 130]). These methods are used in weighting spatial proxies [9, 13, 39, 42, 71, 99, 124]. The FUCOM method, as a pairwise comparison method, reduces the large number of pairwise comparisons of similar and popular approaches such as analytic hierarchy process (AHP: [113]) with $n(n-1)/2$ and the

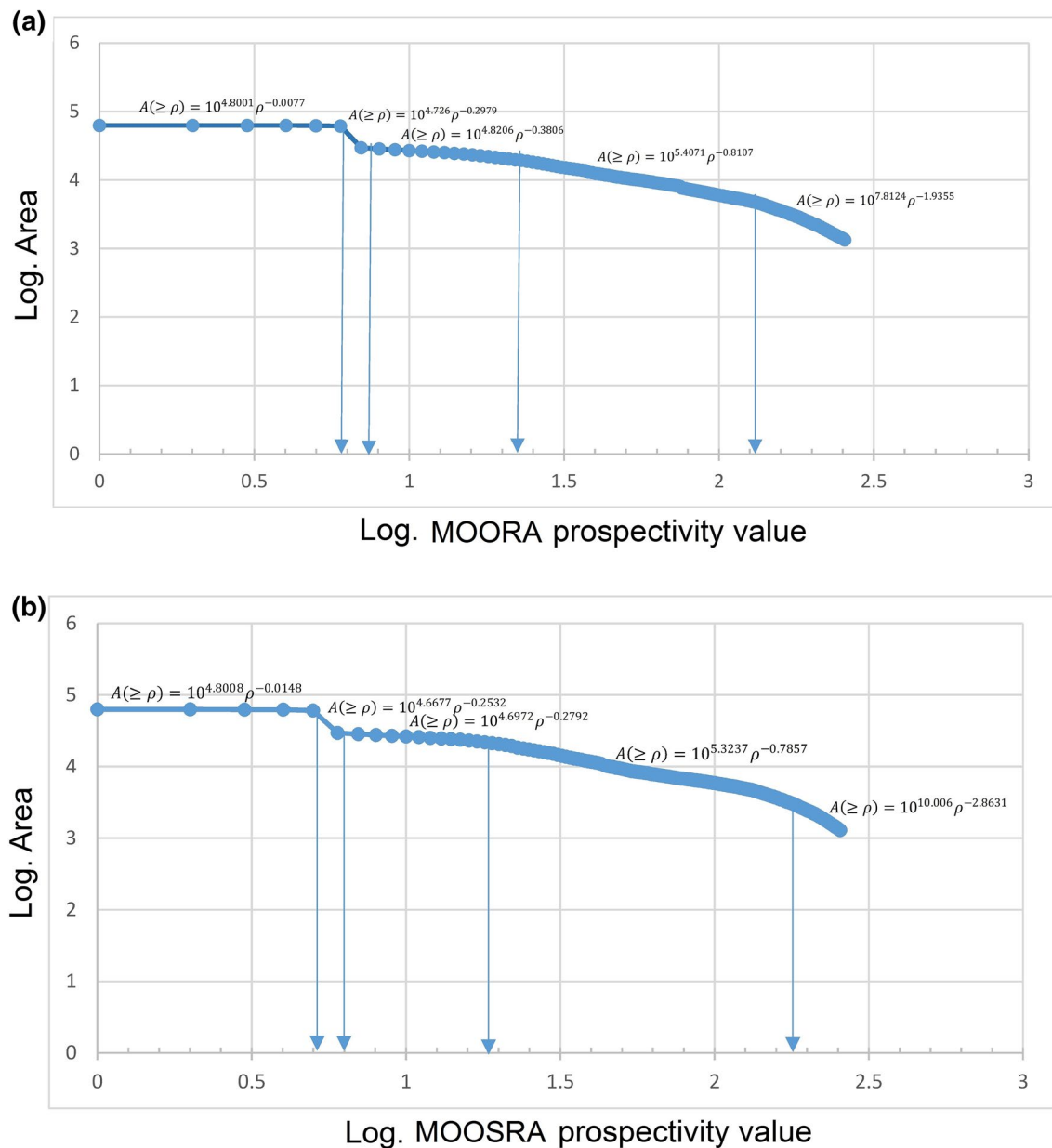


Fig. 6 Log-log plot of **a** MOORA and **b** MOOSRA prospectivity values in the study area

best-worst method (BWM: [109]) with $2n - 3$ number of pairwise comparisons with $n - 1$ which leads to a less time-consuming and more consistent performance compared with AHP and BWM. Yet, the application of FUCOM in MPM is not without drawbacks. The subjectivity has been regarded as the most crucial flaw of FUCOM in MPM (cf. [94]). Further research should account for fuzziness and ambiguity to modulate this caveat in FUCOM-based MPM (cf. [94]). Turning to the MOORA [21] and MOOSRA [32] methods, this study demonstrated the application of these approaches in the integration of weighted evidence maps. Regional-scale maps of mineral potential

are used for reducing the search space and thus the cost of exploratory surveys [79]. In this work, two multi-criteria decision-making approaches, namely MOORA [21] and MOOSRA [32], were applied in the context of knowledge-driven mineral potential mapping (MPM). Both methods successfully limited the search space for field checks and further surveys. However, MOOSRA returned a more cost-effective potential map, with its target zones occupying merely some 1.7 km². Ground-truth analysis of the delineated target also sheds light on the superiority of the MOOSRA method. Furthermore, the statistical comparison of the two methods using

Fig. 7 Classified prospectivity map of skarn deposits in the Varan area based on favorability–area fractal modeling of the MOORA method

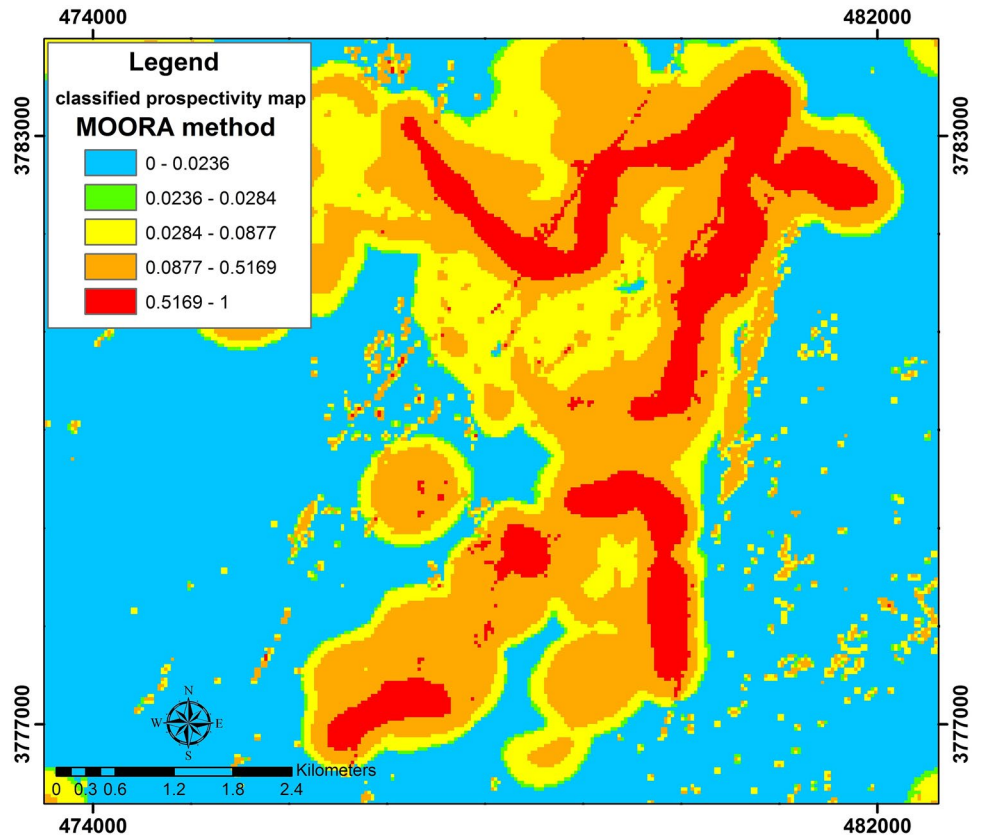


Fig. 8 Classified prospectivity map of skarn deposits in the Varan area based on favorability–area fractal modelling of the MOOSRA method

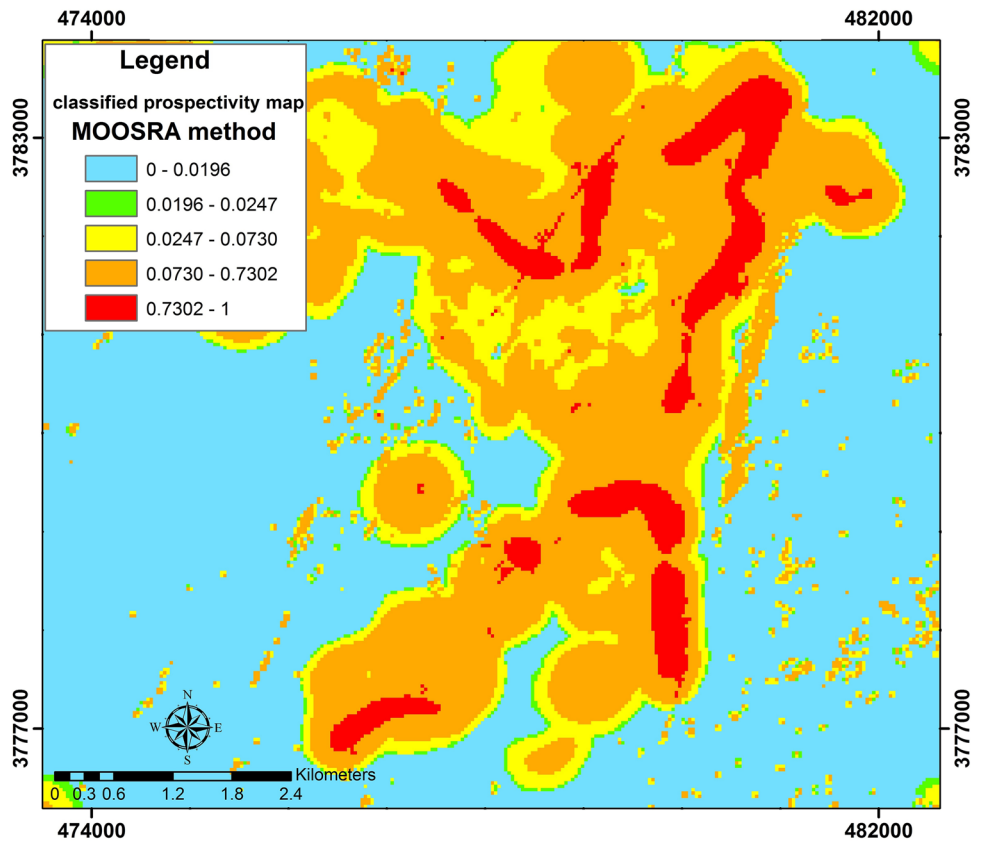


Table 5 Classification of values based on favorability–area fractal modeling in the MOORA method

| Class ID | Classes range of C-A prospectivity map of MOORA method | Favorability |
|----------|--|--------------|
| 1 | 0–0.0236 | Very low |
| 2 | 0.0236–0.0284 | Low |
| 3 | 0.0284–0.0877 | Moderate |
| 4 | 0.0877–0.5169 | High |
| 5 | 0.5169–1 | Very high |

Table 6 Classification of values based on favorability–area fractal modeling in the MOOSRA method

| Class ID | Classes range of C-A prospectivity map of MOOSRA method | Favorability |
|----------|---|--------------|
| 1 | 0–0.0196 | Very low |
| 2 | 0.0196–0.0247 | Low |
| 3 | 0.0247–0.0730 | Moderate |
| 4 | 0.0730–0.7302 | High |
| 5 | 0.7302–1 | Very high |

correct classification rates (CCR) revealed that MOOSRA returned a more reliable map of mineral potential.

There are a whole host of different multi-criteria decision-making methods used in MPM. However, what makes MOORA and MOOSRA more reliable compared to many other methods is the fact that optimizations procedure is applied to calculate the prospectivity score of individual unit cells [4, 7, 11, 33, 70, 75, 84, 98, 116, 129, 137]. This reduces the uncertainty stemming from erroneous mathematical calculations. In addition, this study was applied on a suite of mineral systems-derived targeting criteria (e.g., [85]), modulating the errors embedded in the local-scale deposit models [80]. Therefore, the target zones retrieved from these frameworks can be assumed as confident targets, in which the risk of exploration has been reduced.

Aside from the comparison of these methods, the delineated target zones show evidence of calcic skarn mineralization. The presence of mineral assemblages critical to the exploration of this style of mineralization,

such as magnetite, crystalline calcite, and pyrite, provides compelling evidence for the presence of mineralization. The delineated targets, therefore, are worthy of detailed surveys.

7 Conclusions

This study proposed the application of FUCOM method as a MCDM approach for assigning weights to the spatial proxies and two matrix-based decision-making methods of MOORA and MOOSRA for intergrading a set of targeting criteria for mineral potential mapping. These methods combined to each other to present two-step methodologies, namely FUCOM-MOORA and FUCOM-MOOSRA. The results of combined methods were interesting and accurate because FUCOM weighting method has the minimum possible number of comparisons in its theory, which lead to having more reliable outputs in comparison with previous approaches, and both MOORA and MOOSRA methods have robust mathematical theory, which reduces the uncertainty stemming from erroneous mathematical calculations and causes having more trusty results. The proposed methods FUCOM-MOORA and FUCOM-MOOSRA were utilized for intergrading a set of 2D spatial proxies representing calcic skarn mineralization in Central Iran. The latter method revealed superior results as shown by field checks and statistical analyses. Both methods successfully reduced the search space for further exploratory surveys. Moreover, a mineral system approach was applied for deriving the targeting criteria, which itself reduces the bias of fallacious assumptions in geological models. As a result, the retrieved maps of mineral potential can be assumed as a high confident map, based on which further decisions can be made. The target zones suggested in the potential maps are probably worthy of conducting further exploration surveys including litho-geochemical sampling, magnetic geophysical survey, trenching, and exploration drilling. The genetic characteristics of calcic skarn deposits and the data available were used to develop a set of 2D spatial proxies representing iron skarn mineralization. In the future, the proposed methods can be used to integrate a set of 3D spatial proxies for determining exploration drilling points in the target zones.

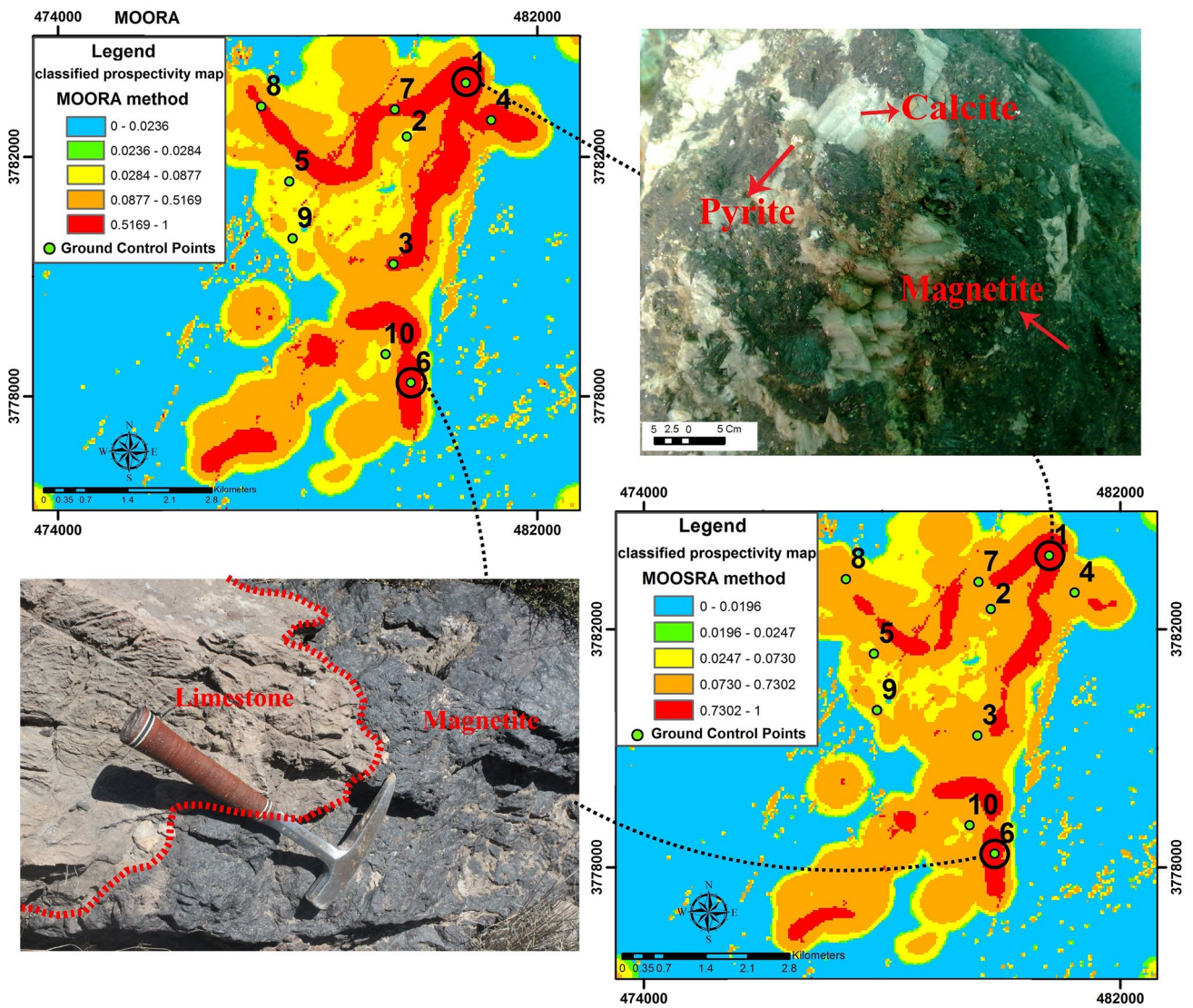


Fig. 9 Comparison between classified prospectivity maps of the MOORA and MOOSRA

Table 7 Classification of mineralization intensity of iron skarn deposits based on Fe total analyses

| Grade % Fe total | 0–6 | 6–12 | 12–18 | 18–24 | Greater than 24 |
|--|----------|------|----------|-------|-----------------|
| Classification of mineralization intensity in skarn deposits | Very low | Low | Moderate | High | Very high |

Fig. 10 Anomalous area of the MOORA in comparison with the MOOSRA (background: hill-shade of study area prepared from ASTER DEM)

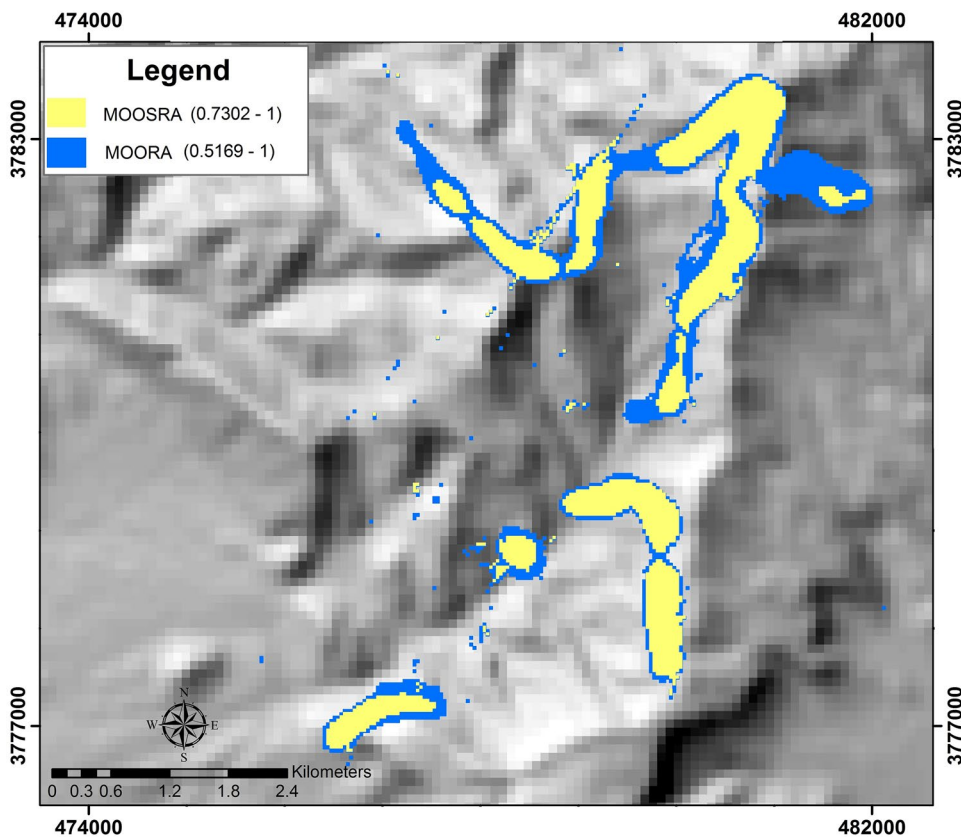


Table 8 Comparison between thresholds of the MOORA and MOOSRA prospectivity maps (based on favorability–area fractal modeling) with classification of mineralization intensity of calcic iron skarn prospectivity

| Sample number | Thresholds of C-A prospectivity map (MOORA method) | Thresholds of C-A prospectivity map (MOOSRA method) | Grade % Fe total | Classification of mineralization intensity in calcic iron skarn deposits | The most accurate method |
|---------------|--|---|------------------|--|--------------------------|
| 1 | Very high | Very high | 27 | Very high | MOORA & MOOSRA |
| 2 | Moderate | Moderate | 14 | Moderate | MOORA & MOOSRA |
| 3 | Very high | High | 22 | High | MOOSRA |
| 4 | Very high | High | 21 | High | MOOSRA |
| 5 | Moderate | Moderate | 15 | Moderate | MOORA & MOOSRA |
| 6 | Very high | Very high | 28 | Very high | MOORA & MOOSRA |
| 7 | Very high | High | 25 | Very high | MOORA |
| 8 | Very high | High | 26 | Very high | MOORA |
| 9 | Moderate | High | 19 | High | MOOSRA |
| 10 | Moderate | Moderate | 15 | Moderate | MOORA & MOOSRA |

Table 9 Confusion matrix of the MOORA method in the Varan area

| Estimated class | 1 | 2 | 3 | 4 | 5 |
|-----------------|---|---|---|---|---|
| Real class | - | - | - | - | - |
| 1 | 0 | 0 | 0 | 0 | 0 |
| 2 | 0 | 0 | 0 | 0 | 0 |
| 3 | 0 | 0 | 3 | 0 | 0 |
| 4 | 0 | 0 | 1 | 0 | 2 |
| 5 | 0 | 0 | 0 | 0 | 4 |

Table 10 Confusion matrix of the MOOSRA method in the Varan area

| Estimated class | 1 | 2 | 3 | 4 | 5 |
|-----------------|---|---|---|---|---|
| Real class | - | - | - | - | - |
| 1 | 0 | 0 | 0 | 0 | 0 |
| 2 | 0 | 0 | 0 | 0 | 0 |
| 3 | 0 | 0 | 3 | 0 | 0 |
| 4 | 0 | 0 | 0 | 3 | 0 |
| 5 | 0 | 0 | 0 | 2 | 2 |

Acknowledgements The authors give thanks to Dr. Edris Mansouri for his helpful suggestions.

Compliance with ethical standards

Conflict of interest The authors declare that they have no conflict of interest.

Open Access This article is licensed under a Creative Commons Attribution 4.0 International License, which permits use, sharing, adaptation, distribution and reproduction in any medium or format, as long as you give appropriate credit to the original author(s) and the source, provide a link to the Creative Commons licence, and indicate if changes were made. The images or other third party material in this article are included in the article's Creative Commons licence, unless indicated otherwise in a credit line to the material. If material is not included in the article's Creative Commons licence and your intended use is not permitted by statutory regulation or exceeds the permitted use, you will need to obtain permission directly from the copyright holder. To view a copy of this licence, visit <http://creativecommons.org/licenses/by/4.0/>.

References

1. Abedi M, Torabi SA, Norouzi GH, Hamzeh M, Elyasi GR (2012) PROMETHEE II: a knowledge-driven method for copper exploration. *Comput Geosci* 46:255–263
2. Agard P, Omrani J, Jolivet L, Mouthereau F (2005) Convergence history across Zagros (Iran): constraints from collisional and earlier deformation. *Int J Earth Sci* 94:401–419
3. Agard P, Omrani J, Jolivet L, Whitechurch H, Vrielynck B, Spakman W, Monié P, Meyer B, Wortel R (2011) Zagros orogeny: a subduction-dominated process. *Geol Mag* 148:692–725
4. Akkaya G, Turanoğlu B, Öztaş S (2015) An integrated fuzzy AHP and fuzzy MOORA approach to the problem of industrial engineering sector choosing. *Expert Syst Appl* 42(24):9565–9573
5. Alavijeh BS, Rashidnejad-Omran N, Corfu F (2017) Zircon U-Pb ages and emplacement history of the Nodoushan plutonic complex in the central Urumieh-Dokhtar magmatic belt, Central Iran: product of Neotethyan subduction during the Paleogene. *J Asian Earth Sci* 143:283–295
6. Aliyari F, Rastad E, Mohajjel M (2012) Gold deposits in the Sanandaj-Sirjan zone: orogenic gold deposits or intrusion-related gold systems? *Resour Geol* 62(3):296–315
7. Anitha J, Das R (2020) Optimization of process parameters in electro discharge machine using standard deviation, MULTIMOORA and MOOSRA methods. In: *Innovative product design and intelligent manufacturing systems*, Springer, Singapore, pp 619–629
8. Arabameri A, Rezaei K, Cerda A, Lombardo L, Rodrigo-Comino J (2019) GIS-based groundwater potential mapping in Shahroud plain, Iran. A comparison among statistical (bivariate and multivariate), data mining and MCDM approaches. *Sci Total Environ* 658:160–177
9. Asadi HH, Sansoleimani A, Fatehi M, Carranza EJM (2016) An AHP-TOPSIS predictive model for district-scale mapping of porphyry Cu–Au potential: a case study from Salafchegan area (central Iran). *Nat Resour Res* 25(4):417–429
10. Attri R, Grover S (2013) Decision making over the production system life cycle: MOORA method. *Int J Syst Assur Eng Manag* 5:320–328
11. Aytac E, Işık A (2016) The multi-objective decision-making methods based on MULTIMOORA and MOOSRA for the laptop selection problem. *J Ind Eng Int* 13:229–237
12. Badi I, Abdulshahed A (2019) Ranking the Libyan airlines by using full consistency method (FUCOM) and analytical hierarchy process (AHP). *Oper Res Eng Sci Theory Appl* 2(1):1–14
13. Bahrami Y, Hassani H, Maghsoudi A (2019) BWM-ARAS: A new hybrid MCDM method for Cu prospectivity mapping in the Abhar area. *NW Iran Spatial Stat* 33:100382
14. Bakhtavar E, Lotfian R (2017) Applying an integrated fuzzy gray MCDM approach: a case study on mineral processing plant site selection. *Int J Min Geo-Eng* 51(2):177–183
15. Belousov VI, Belousova IV, Filippov Y (2012) The formation of hydrothermal-magmatic systems of skarn type. In: *Proceedings, thirty-seventh workshop on geothermal reservoir engineering Stanford University, Stanford, California, January*
16. Berberian M, King GCP (1981) Towards a paleogeography and tectonic evolution of Iran. *Can J Earth Sci* 18(2):210–265
17. Bozanic D, Tešić D, Kočić J (2019) Multi-criteria FUCOM–Fuzzy MABAC model for the selection of location for construction of single-span bailey bridge. *Decis Making Appl Manag Eng* 2(1):132–146
18. Bozanic D, Tešić D, Milić A (2020) Multicriteria decision making model with Z-numbers based on FUCOM and MABAC model. *Decis Making Appl Manag Eng* 3(2):19–36
19. Brauers W, Zavadskas E (2009) Robustness of the multi-objective MOORA method with a test for the facilities sector. *Technol Econ Dev Econ* 15:352–375
20. Brauers WKM, Ginevičius R, Podvezko V (2010) Regional development in Lithuania considering multiple objectives by the MOORA method. *Technol Econ Dev Econ* 16(4):613–640
21. Brauers WK, Zavadskas EK (2006) The MOORA method and its application to privatization in a transition economy. *Control Cybern* 35:445–469
22. Brauers W, Ginevičius R, Podvezko V (2010) Regional development in Lithuania considering multiple objectives by the MOORA method. *Technol Econ Dev Econ* 16:613–640
23. Brauers W, Zavadskas E, Peldschus F, Turskis Z (2008) Multi-objective decision-making for road design. *Transport*. 23:183–193
24. Burkin JN, Lindsay MD, Occhipinti SA, Holden EJ (2019) Incorporating conceptual and interpretation uncertainty to mineral prospectivity modelling. *Geosci Front* 10(4):1383–1396
25. Chakraborty S (2011) Applications of the MOORA method for decision making in manufacturing environment. *Int J Adv Manuf Technol* 54(9–12):1155–1166
26. Chatterjee P, Athawale VM, Chakraborty S (2011) Materials selection using complex proportional assessment and evaluation of mixed data methods. *Mater Des* 32(2):851–860
27. Collins WJ, Belousova EA, Kemp AI, Murphy JB (2011) Two contrasting Phanerozoic orogenic systems revealed by hafnium isotope data. *Nat Geosci* 4(5):333–337
28. Cox DP (1986) Descriptive model of Fe skarn deposits. *Miner Depos Models US Geol Surv Bull* 1693:94
29. Cox DP, Singer DA (1986) Mineral deposit models, vol 1693, Bulletin: US Government Printing Office
30. Cox DP, Theodore TG (1986) Descriptive model of Cu skarn deposits. *Miner Depos Models US Geol Surv Bull* 1693:86
31. Dargahi S, Arvin M, Pan Y, Babaei A (2010) Petrogenesis of post-collisional A-type granitoids from the Urumieh-Dokhtar magmatic assemblage, Southwestern Kerman, Iran: constraints on the Arabian-Eurasian continental collision. *Lithos* 115(1–4):190–204
32. Das MC, Sarkar B, Ray S (2012) Decision making under conflicting environment: a new MCDM method. *Int J Appl Decis Sci* 5(2):142–162

33. Dorfeshan Y, Mousavi SM, Mohagheghi V, Vahdani B (2018) Selecting project-critical path by a new interval type-2 fuzzy decision methodology based on MULTIMOORA, MOOSRA and TPOP methods. *Comput Ind Eng* 120:160–178
34. Du Bray EA (1995) Preliminary compilation of descriptive geoenvironmental mineral deposit models. US Geological Survey, Denver, CO, pp 95–831
35. Durmić E (2019) Evaluation of criteria for sustainable supplier selection using FUCOM method. *Oper Res Eng Sci Theory Appl* 2(1):91–107
36. Einaudi MT, Burt DM (1982) Introduction; terminology, classification, and composition of skarn deposits. *Econ Geol* 77(4):745–754
37. Einaudi MT, Meinert LD, Newberry RJ, Skinner Brian JE (1981) Skarn deposits
38. Elliott JE, Wallace CA, Lee GK, Antweiler JC, Lidke DJ, Rowan LC, Moll SH (1992) Mineral resource assessment map for skarn deposits of gold, silver, copper, tungsten, and iron in the Butte I O X2 quadrangle, Montana
39. Elyasi GR, Bahroudi A, Abedi M (2019) Risk-based analysis in mineral potential mapping: application of quantifier-guided ordered weighted averaging method. *Nat Resour Res* 28(3):931–951
40. Elyasi GR, Bahroudi A, Abedi M, Rahimi H (2020) Weighted photolineaments factor (WPF): an enhanced method to generate a predictive structural evidential map with low uncertainty, a case study in Chahargonbad Area, Iran. *Nat Resour Res* 1–33
41. Fazlollahtabar H, Smailbašić A, Stević Ž (2019) FUCOM method in group decision-making: Selection of forklift in a warehouse. *Decis Making Appl Manag Eng* 2(1):49–65
42. Feizi F, Karbalaeei-Ramezani A, Mansouri E (2017) Calcic iron skarn prospectivity mapping based on fuzzy AHP method, a case Study in Varan area, Markazi province. *Iran Geosci J* 21(1):123–136
43. Feizi F, Karbalaeei-Ramezani A, Tusi H (2017) Mineral potential mapping via TOPSIS with hybrid AHP–Shannon entropy weighting of evidence: a case study for porphyry-cu, Farmahin area, Markazi Province. *Iran Nat Resour Res* 26(4):553–570
44. Ford A, Hart CJ (2013) Mineral potential mapping in frontier regions: a Mongolian case study. *Ore Geol Rev* 51:15–26
45. Forson ED, Menyeh A, Wemegah DD, Danuor SK, Adjovu I, Appiah I (2020) Mesothermal gold prospectivity mapping of the southern Kibi-Winneba belt of Ghana based on Fuzzy analytical hierarchy process, concentration-area (CA) fractal model and prediction-area (PA) plot. *J Appl Geophys* 174:103971
46. Förster H (1978) Mesozoic–cenozoic metallogenesis in Iran. *J Geol Soc* 135(4):443–455
47. Gadakh VS (2010) Application of MOORA method for parametric optimization of milling process. *Int J Appl Eng Res* 1(4):743
48. Gadakh VS, Shinde VB, Khemnar NS (2013) Optimization of welding process parameters using MOORA method. *Int J Adv Manuf Technol* 69(9–12):2031–2039
49. Ghalamghash J, Babakhani AR (1996) Geological map of Kahak area, scale 1: 100,000, Geol. Surv, Tehran, Iran
50. Gheshlaghi HA, Feizizadeh B (2017) An integrated approach of analytical network process and fuzzy based spatial decision making systems applied to landslide risk mapping. *J Afr Earth Sc* 133:15–24
51. Ghorbani M (2013) Economic geology of Iran, vol 581. Springer, Berlin
52. Golonka J (2004) Plate tectonic evolution of the southern margin of Eurasia in the Mesozoic and Cenozoic. *Tectonophysics* 381(1–4):235–273
53. Goryachev NA, Shpikerman VI, Church SE, Gvozdev VI (2018) Calcic skarn ore deposits of the North-East Russia. *Ore Geol Rev* 103:3–20
54. Guilbert JM, Lowell JD (1974) Variations in zoning patterns in porphyry copper deposits: Canadian Institute of Mining and Metallurgy Bulletin, vol 67
55. Hammarstrom JM (2002) Environmental geochemistry of skarn and polymetallic carbonate-replacement deposit models. *Prog Geoenviron Models Sel Miner Depos Types* 2:115
56. Hammarstrom JM, Kotlyar BB, Theodore TG, Elliott JE, John DA, Doebrich JL et al (1995) Cu, Au, and Zn-Pb Skarn deposits preliminary compilation of descriptive geoenvironmental mineral deposit models US Geological Survey Open-File Report 95, p 831
57. Hammarstrom JM, Theodore TG, Kotlyar BB, Doebrich JA, Elliott JE, Nash JT et al (2004) FE SKARN DEPOSITS (MODEL 18d; Cox, 198)
58. Haschke M, Ahmadian J, Murata M, McDonald I (2010) Copper mineralization prevented by arc-root delamination during Alpine-Himalayan collision in central Iran. *Econ Geol* 105(4):855–865
59. Hengl T (2006) Finding the right pixel size. *Comput Geosci* 32(9):1283–1298
60. Honarmand M, Li XH, Nabatian G, Neubauer F (2017) In-situ zircon U-Pb age and Hf-O isotopic constraints on the origin of the Hasan-Robat A-type granite from Sanandaj-Sirjan zone, Iran: implications for reworking of Cadomian arc igneous rocks. *Miner Pet* 111(5):659–675
61. Honarmand M, Omran NR, Corfu F, Emami MH, Nabatian G (2013) Geochronology and magmatic history of a calc-alkaline plutonic complex in the Urumieh-Dokhtar Magmatic Belt, Central Iran: zircon ages as evidence for two major plutonic episodes. *Neues Jahrbuch für Mineralogie-Abhandlungen: J Mineral Geochem* 190(1):67–77
62. Hronsky JM, Kreuzer OP (2019) Applying spatial prospectivity mapping to exploration targeting: fundamental practical issues and suggested solutions for the future. *Ore Geology Reviews*
63. Hutchison CS (1989) The palaeo-Tethyan realm and Indosinian orogenic system of Southeast Asia. In: *Tectonic evolution of the Tethyan region*, Springer, Dordrecht, pp 585–643
64. Isles DJ, Rankin LR (2013) Geological interpretation of aeromagnetic data. Society of Exploration Geophysicists and Australian Society of Exploration Geophysicists
65. Jamali H, Dilek Y, Daliran F, Yaghubpur A, Mehrabi B (2010) Metallogeny and tectonic evolution of the Cenozoic Ahar-Arasbaran volcanic belt, northern Iran. *Int Geol Rev* 52(4–6):608–630
66. Jamali H, Zohouri FS, Manesh SMT (2019) Exhalative deposits in eocene volcano-sedimentary rocks in the middle part of the Urumieh-Dokhtar magmatic belt: Detailed evidence from nabar deposit, west of Kashan, Urumieh-Dokhtar Magmatic Belt. *J Afr Earth Sci* 154:120–135
67. Janković S (1977) The copper deposits and geotectonic setting of the Thethyan Eurasian Metallogenic Belt. *Miner Deposita* 12(1):37–47
68. Jenks GF (1967) The data model concept in statistical mapping. *Int Yearbook Cartogr* 7:186–190
69. Kananian A, Sarjoughian F, Nadimi A, Ahmadian J, Ling W (2014) Geochemical characteristics of the Kuh-e Dom intrusion, Urumieh-Dokhtar Magmatic Arc (Iran): implications for source regions and magmatic evolution. *J Asian Earth Sci* 90:137–148
70. Karande P, Chakraborty S (2012) Application of multi-objective optimization on the basis of ratio analysis (MOORA) method for materials selection. *Mater Des* 37:317–324
71. Karbalaeei Ramezani A, Feizi F, Jafarirad A, Lotfi M (2020) Application of best-worst method and additive ratio assessment in mineral prospectivity mapping: a case study of vein-type copper mineralization in the Kuhshah-e-Urmak Area. *Iran Ore Geol Rev* 117:103268

72. Karbalaee Ramezani A, Feizi F, Jafarirad A, Lotfi M (2020) Geochemical anomaly and mineral prospectivity mapping for vein-type copper mineralization, kuhshah-e-urmak area, Iran: application of sequential gaussian simulation and multivariate regression analysis. *Nat Resour Res* 29(1):41–70
73. Karel W, Brauers W, Zavadskas E, Turskis Z, Vilutienė T (2008) Multi-objective contractor's ranking by applying the MOORA method. *J Bus Econ Manag* 9:245–255
74. Khodami M, Noghrean M, Davoudian AR (2009) Pliocene-Quaternary Adakite volcanism in the Isfahan area, Central Iranian magmatic belt. *Neues Jahrbuch für Mineralogie-Abhandlungen: J Mineral Geochem* 186(3):235–248
75. Kılıç G, Organ A (2019) Comparison of private shopping sites with user data from entropy-based Moosra method. In: *Multi-criteria decision-making models for website evaluation*, IGI Global, pp 103–120
76. Knox-Robinson CM, Wyborn LAI (1997) Towards a holistic exploration strategy: using geographic information systems as a tool to enhance exploration. *Aust J Earth Sci* 44:453–463
77. Kuo MS, Liang GS (2012) A soft computing method of performance evaluation with MCDM based on interval-valued fuzzy numbers. *Appl Soft Comput* 12(1):476–485
78. Lin N, Chen Y, Lu L (2020) Mineral potential mapping using a conjugate gradient logistic regression model. *Nat Resour Res* 29(1):173–188
79. Lindsay M, Aitken A, Ford A, Dentith M, Hollis J, Tyler I (2016) Reducing subjectivity in multi-commodity mineral prospectivity analyses: Modelling the west Kimberley, Australia. *Ore Geol Rev* 76:395–413
80. Lisitsin VA, González-Álvarez I, Porwal A (2013) Regional prospectivity analysis for hydrothermal-remobilised nickel mineral systems in western Victoria, Australia. *Ore Geol Rev* 52:100–112
81. Maleki S, Alirezaei S, Corfu F (2019) Dating of Oligocene granitoids in the Khak-Sorkh area, Central Urumieh-Dokhtar arc, Iran, and a genetic linkage with the associated skarn iron deposit. *J Asian Earth Sci* 182:103930
82. Manap MA, Sulaiman WNA, Ramli MF, Pradhan B, Surip N (2013) A knowledge-driven GIS modeling technique for groundwater potential mapping at the Upper Langat Basin, Malaysia. *Arab J Geosci* 6:1–17
83. Mansouri E, Feizi F, Rad AJ, Arian M (2017) A comparative analysis of index overlay and topsis (based on AHP weight) for iron skarn mineral prospectivity mapping, a case study in Sarvian area, Markazi province. *Iran Maden Tetkik ve Arama Dergisi* 155:147–160
84. Mavi RK, Goh M, ZARBakhshnia N (2017) Sustainable third-party reverse logistic provider selection with fuzzy SWARA and fuzzy MOORA in plastic industry. *Int J Adv Manuf Technol* 91(5–8):2401–2418
85. McCuaig TC, Beresford S, Hronsky J (2010) Translating the mineral systems approach into an effective exploration targeting system. *Ore Geol Rev* 38(3):128–138
86. Meinert, L. D. (1992). Skarns and skarn deposits. *Geoscience Canada*, vol 19, no 4
87. Meulenkamp JE, Sissingh W (2003) Tertiary palaeogeography and tectonostratigraphic evolution of the Northern and Southern Peri-Tethys platforms and the intermediate domains of the African-Eurasian convergent plate boundary zone. *Palaeogeogr Palaeoclimatol Palaeoecol* 196(1–2):209–228
88. Nabatian G, Rastad E, Neubauer F, Honarmand M, Ghaderi M (2015) Iron and Fe–Mn mineralisation in Iran: implications for Tethyan metallogeny. *Aust J Earth Sci* 62(2):211–241
89. Najafi A, Karimpour MH, Ghaderi M (2014) Application of fuzzy AHP method to IOCG prospectivity mapping: A case study in Taherabad prospecting area, eastern Iran. *Int J Appl Earth Obs Geoinf* 33:142–154
90. Nunić Z (2018) Evaluation and selection of Manufacturer PVC carpentry using FUCOM-MABAC model. *Oper Res Eng Sci Theory Appl* 1(1):13–28
91. Nykänen V, Niiranen T, Molnár F, Lahti I, Korhonen K, Cook N, Skyttä P (2017) Optimizing a knowledge-driven prospectivity model for gold deposits within Peräpohja Belt, Northern Finland. *Nat Resour Res* 26(4):571–584
92. Occhipinti SA, Metelka V, Lindsay MD, Hollis JA, Aitken AR, Tyler IM et al (2016) Multicommodity mineral systems analysis highlighting mineral prospectivity in the Halls Creek Orogen. *Ore Geol Rev* 72:86–113
93. Okay AI (1989) Alpine-Himalayan blueschists. *Annu Rev Earth Planet Sci* 17(1):55–87
94. Pamucar D, Deveci M, Canitez F, Bozanic D (2020) A fuzzy Full Consistency Method-Dombi-Bonferroni model for prioritizing transportation demand management measures. *Appl Soft Comput* 87:105952
95. Park I, Kim Y, Lee S (2014) Groundwater productivity potential mapping using evidential belief function. *Groundwater* 52(S1):201–207
96. Parsa M, Maghsoudi A, Ghezlbash R (2016) Decomposition of anomaly patterns of multi-element geochemical signatures in Ahar area, NW Iran: a comparison of U-spatial statistics and fractal models. *Arab J Geosci* 9(4):260
97. Parsa M, Maghsoudi A (2018) Controls on Mississippi valley-type Zn-Pb mineralization in Behabad district, central Iran: constraints from spatial and numerical analyses. *J Afr Earth Sci* 140:189–198
98. Patnaik PK, Swain PTR, Mishra SK, Purohit A, Biswas S (2020) Composite material selection for structural applications based on AHP-MOORA approach. *Mater Today Proc* 33:5659–5663
99. Pazand K, Hezarkhani A (2015) Porphyry Cu potential area selection using the combine AHP-TOPSIS methods: a case study in Siahrud area (NW, Iran). *Earth Sci Inf* 8(1):207–220
100. Pazand K, Hezarkhani A, Ghanbari Y (2014) Fuzzy analytical hierarchy process and GIS for predictive Cu porphyry potential mapping: a case study in Ahar-Arasbaran Zone (NW, Iran). *Arab J Geosci* 7:241–251
101. Pazand K, Hezarkhani A, Ataei M (2012) Using TOPSIS approaches for predictive porphyry Cu potential mapping: A case study in Ahar-Arasbaran area (NW, Iran). *Comput Geosci* 49:62–71
102. Pazand K, Hezarkhani A, Ataei M, Ghanbari Y (2011) Combining AHP with GIS for predictive Cu porphyry potential mapping: A case study in Ahar Area (NW, Iran). *Nat Resour Res* 20:251–262
103. Pérez-Domínguez L, Rodríguez-Picón LA, Alvarado-Iniesta A, Luviano Cruz D, Xu Z (2018) MOORA under Pythagorean fuzzy set for multiple criteria decision making. *Complexity*
104. Pour AB, Hashim M (2012) Identifying areas of high economic-potential copper mineralization using ASTER data in the Urumieh-Dokhtar Volcanic Belt. *Iran Adv Space Res* 49(4):753–769
105. Prentkovskis O, Erceg Ž, Stević Ž, Tanackov I, Vasiljević M, Gavranović M (2018) A new methodology for improving service quality measurement: Delphi-FUCOM-SERVQUAL model. *Symmetry* 10(12):757
106. Purtov VK, Kholodnov VV, Anfilogov VN, Nechkin GS (1989) The role of chlorine in the formation of magnetite skarns. *Int Geol Rev* 31(1):63–71
107. Rahimi E, Shekarian Y, Farahani S, Asgari G, Nakini A (2020) New Approach in Application of the AHP-Fuzzy TOPSIS Method in Mineral Potential Mapping of the Natural Bitumen (Gilonite): A Case Study from the Gilan-e-Gharb Block, the Kermanshah, West of Iran. *Am J Eng Appl Sci* 13(1):96–110
108. Reilinger RE, McClusky SC, Oral MB, King RW, Toksoz MN, Barka AA et al (1997) Global Positioning System measurements

- of present-day crustal movements in the Arabia-Africa-Eurasia plate collision zone. *J Geophys Res Solid Earth* 102(B5):9983–9999
109. Rezaei J (2015) Best-worst multi-criteria decision-making method. *Omega* 53:49–57
 110. Rosenbaum GIDEON, Lister GS (2002) Reconstruction of the evolution of the Alpine-Himalayan orogeny—an introduction. *J Virtual Explor* 8:1–2
 111. Roshanravan B (2020) Translating a mineral systems model into continuous and data-driven targeting models: An example from the Dolatabad Chromite District Southeastern Iran. *J Geochem Explor* 215:106556
 112. Roshanravan B, Tabatabaei SH, Kreuzer O, Moini H, Parsa M (2020) Structural and non-structural statistical methods: implications for delineating geochemical anomalies. *Appl Earth Sci* 129(3):111–121
 113. Saaty TL (1980) *The analytic hierarchy process: planning, priority setting, resources allocation*. McGraw, New York, p 281
 114. Sabbaghi H, Tabatabaei SH (2020) A combinative knowledge-driven integration method for integrating geophysical layers with geological and geochemical datasets. *J Appl Geophys* 172:103915
 115. Sarjoughian F, Javadi S, Azizi H, Ling W, Asahara Y, Lentz D (2019) Geochemical and Sr–Nd isotopic constraints on the genesis of the Soheyle–PaKuh granitoid rocks (central Urumieh–Dokhtar magmatic belt, Iran). *Int Geol Rev* 62:1–27
 116. Sarkar A, Panja SC, Das D, Sarkar B (2015) Developing an efficient decision support system for non-traditional machine selection: an application of MOORA and MOOSRA. *Prod Manuf Res* 3(1):324–342
 117. Şengör AMC (1986) The dual nature of the Alpine-Himalayan system: progress, problems and prospects. *Tectonophysics* 127(3–4):177–195
 118. Sepahi AA, Salami S, Lentz D, McFarlane C, Maanijou M (2018) Petrography, geochemistry, and U–Pb geochronology of pegmatites and aplites associated with the Alvand intrusive complex in the Hamedan region, Sanandaj–Sirjan zone, Zagros orogen (Iran). *Int J Earth Sci* 107(3):1059–1096
 119. Sepidbar F, Ao S, Palin RM, Li QL, Zhang Z (2019) Origin, age and petrogenesis of barren (low-grade) granitoids from the Bezenjan–Bardsir magmatic complex, southeast of the Urumieh–Dokhtar magmatic belt. *Iran Ore Geol Rev* 104:132–147
 120. Sepidbar F, Mirnejad H, Li JW, Ma C (2017) Mineral and stable isotope compositions, phase equilibria and ⁴⁰Ar–³⁹Ar geochronology from the iron skarn deposit in Sangam, northeastern Iran. *Ore Geol Rev* 91:660–681
 121. Shahabpour J (1999) The role of deep structures in the distribution of some major ore deposits in Iran, NE of the Zagros thrust zone. *J Geodyn* 28(2–3):237–250
 122. Shahabpour J (2005) Tectonic evolution of the orogenic belt in the region located between Kerman and Neyriz. *J Asian Earth Sci* 24(4):405–417
 123. Shahabpour J (2007) Island-arc affinity of the Central Iranian volcanic belt. *J Asian Earth Sci* 30(5–6):652–665
 124. Shahsavari S, Rad AJ, Afzal P, Nezafati N, Aghdam MA (2019) Prospecting for polymetallic mineralization using step-wise weight assessment ratio analysis (SWARA) and fractal modeling in Aghkand Area. NW Iran *Arab J Geosci* 12(7):248
 125. Skirrow RG, Murr J, Schofield A, Huston DL, van der Wielen S, Czarnota K et al (2019) Mapping iron oxide Cu–Au (IOCG) mineral potential in Australia using a knowledge-driven mineral systems-based approach. *Ore Geol Rev* 113:103011
 126. Sosson M, Kaymakci N, Stephenson R, Bergerat F, Starostenko V (2010) Sedimentary basin tectonics from the Black Sea and Caucasus to the Arabian Platform: introduction. *Geol Soc Lond Spec Publ* 340(1):1–10
 127. Stević Ž, Brković N (2020) A novel integrated FUCOM–MARCOS model for evaluation of human resources in a transport company. *Logistics* 4(1):4
 128. Storetvedt KM (1990) The Tethys Sea and the Alpine–Himalayan orogenic belt; mega-elements in a new global tectonic system. *Phys Earth Planet Inter* 62(1–2):141–184
 129. Suriani S, Purnama Y, Nguyen PT (2020) Decision support system in determining smart TV using MOORA. *J Crit Rev* 7(1):80–85
 130. Talkhablou M, Kianpour M, Aghda SF (2019) ArcGIS fuzzy modeling to assess the relationship between seismic wave velocity and electrical resistivity with limestone mass quality (case study: Asmari Formation, southwest Iran). *Model Earth Syst Environ* 5(3):1025–1035
 131. Thomas JC, Grasso JR, Bossu R, Martinod J, Nurtaev B (1999) Recent deformation in the Turan and South Kazakh platforms, western central Asia, and its relation to Arabia–Asia and India–Asia collisions. *Tectonics* 18(2):201–214
 132. Vergés J, Fernández M (2012) Tethys–Atlantic interaction along the Iberia–Africa plate boundary: the Betic–Rif orogenic system. *Tectonophysics* 579:144–172
 133. Vidal C, C. E., Injoque-Espinoza, J., Sidder, G. B., & Mukasa, S. B. (1990) Amphibolitic Cu–Fe skarn deposits in the central coast of Peru. *Econ Geol* 85(7):1447–1461
 134. Wu C, Yin A, Zuza AV, Zhang J, Liu W, Ding L (2016) Pre-Cenozoic geologic history of the central and northern Tibetan Plateau and the role of Wilson cycles in constructing the Tethyan orogenic system. *Lithosphere* 8(3):254–292
 135. Yang J, Xu Z, Robinson PT, Zhang J, Zhang Z, Liu F, Wu C (2011) HP–UHP metamorphic belts in the Eastern Tethyan orogenic system in China. In: *Ultrahigh-pressure metamorphism*, Elsevier, pp 459–499
 136. Zagradjanin N, Pamucar D, Jovanovic K (2019) Cloud-based multi-robot path planning in complex and crowded environment with multi-criteria decision making using full consistency method. *Symmetry* 11(10):1241
 137. Zaied ANH, Ismail M, Gamal A, Mostafa N (2019) An integrated neutrosophic and MOORA for selecting machine tool. *Neutrosophic Sets Syst* 28(1):4
 138. Zamanian H, Sameti M, Pazoki A, Barani N, Ahmadnejad F (2017) Thermobarometry in the Sarvian Fe–skarn deposit (Central Iran) based on garnet–pyroxene chemistry and fluid inclusion studies. *Arab J Geosci* 10(3):54
 139. Zarasvandi A, Charchi A, Carranza EJM, Alizadeh B (2008) Karst bauxite deposits in the Zagros mountain belt. *Iran Ore Geol Rev* 34(4):521–532
 140. Zarasvandi A, Liaghat S, Zentilli K, Porter TM (2005) Porphyry copper deposits of the Urumieh–Dokhtar magmatic arc Iran. *Super Porphyry Copper Gold Depos Glob Perspect* 2:441–452
 141. Zarasvandi A, Rezaei M, Sadeghi M, Lentz D, Adelpour M, Pourkaseb H (2015) Rare earth element signatures of economic and sub-economic porphyry copper systems in Urumieh–Dokhtar Magmatic Arc (UDMA). *Iran Ore Geol Rev* 70:407–423
 142. Zavadskas EK, Turskis Z, Kildienė S (2014) State of art surveys of overviews on MCDM/MADM methods. *Technol Econ Dev Econ* 20(1):165–179
 143. Zolfani SH, Chen IS, Rezaeiiniya N, Tamošaitienė J (2012) A hybrid MCDM model encompassing AHP and COPRAS–G methods for selecting company supplier in Iran. *Technol Econ Dev Econ* 18(3):529–543

Publisher's Note Springer Nature remains neutral with regard to jurisdictional claims in published maps and institutional affiliations.