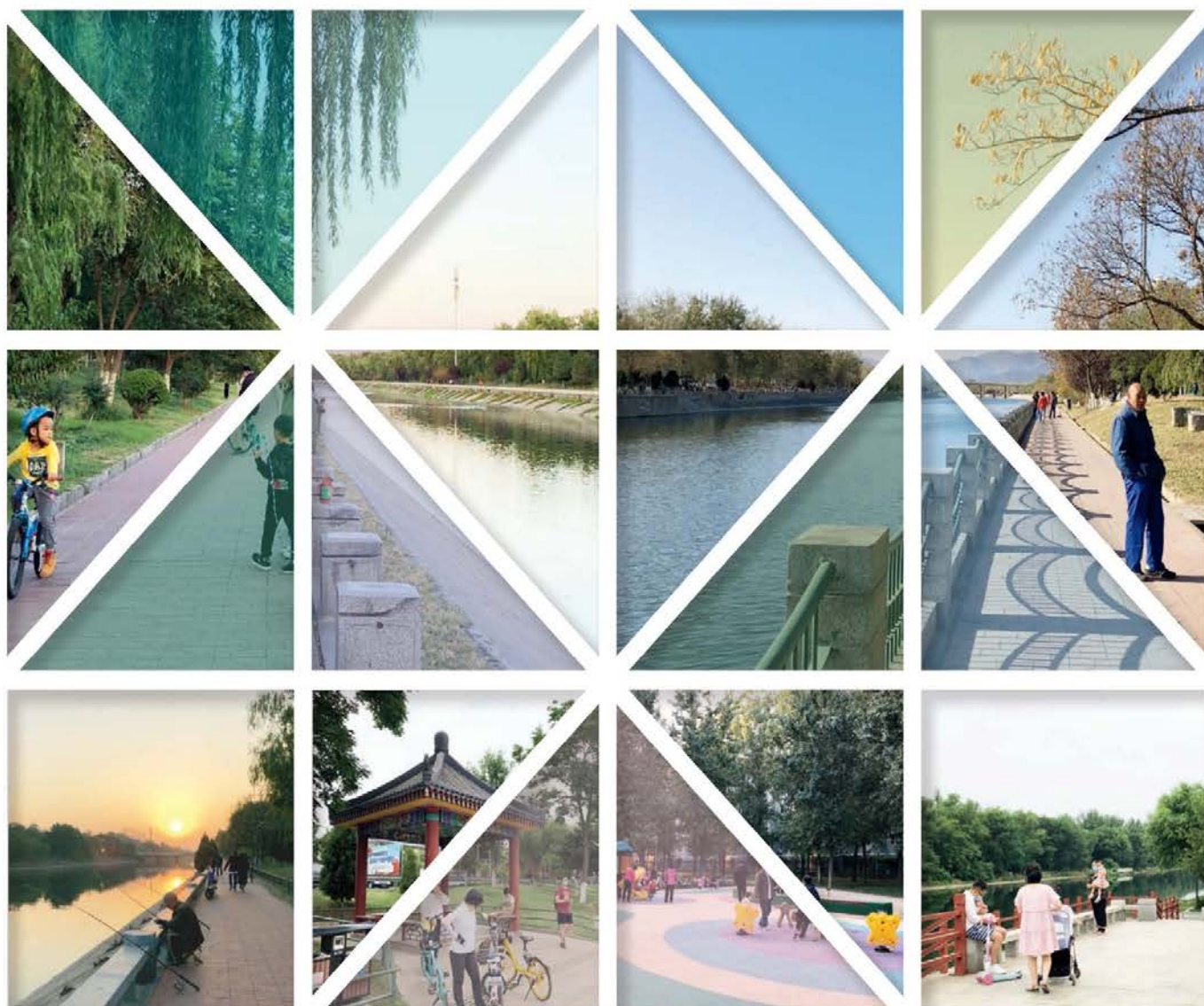




世界建筑  
World Architecture

## 北京清河滨水空间更新整治研究 | Study on the Regeneration of Qinghe River Waterfront in Beijing

历史地理视角下的北京清河 | 北京清河沿线地区功能特色认知 | 大城市边缘区滨水空间发展初探——以北京清河海淀段为例 | 城市滨水空间综合整治要素及治理导向——以北京清河海淀段为例 | 城市边缘区滨水绿道的使用模式与需求研究——以北京清河海淀段为例 | 城市滨水空间的道路交通可达性分析及提升策略研究——以北京清河海淀段为例





# 世界建筑

World Architecture

# 380

## 202202

国内统一连续出版物号  
NATIONAL PUBLICATION NO.  
CN 11-1847/TU  
国际标准连续出版物号  
INTERNATIONAL STANDARD PUBLICATION NO.  
ISSN 1002-4832

1980年10月创刊  
Founded in 1980

主管：中华人民共和国教育部  
主办：清华大学  
协办：北京清华同衡规划设计研究院有限公司，  
北京市建筑设计研究院有限公司  
出版：世界建筑杂志社  
地址：北京清华大学建筑学院建筑馆北208  
电话：010-62788125

投稿邮箱：contribution@wamp.com.cn  
合作信箱：cooperation@wamp.com.cn  
网站：http://www.wamp.com.cn  
微信公众号：世界建筑 或 WA\_magazine  
微博：http://weibo.com/wamp  
豆瓣小组：http://site.douban.com/wamp

国内发行：北京市报刊发行局  
订阅：全国各地邮局  
邮发代号：2-191

定价：每册45CNY，海外空运：45USD  
开户银行：北京银行清华园支行  
户名：北京清大卓筑文化传播有限公司  
账号：01090334600120105468638

社长：尹稚  
副社长：边兰春、赵景阳

主编：张利  
副主编：周榕、青锋  
主编助理：范路

采编中心  
主任：叶扬、项琳斐  
编辑：项琳斐、叶扬、王欣欣、天妮、庞浚波、兀晨  
编务：闫媛、蒋黄雪  
英文审校：王欣欣

运营中心  
总监：潘芳  
策划运营：汪硕、牛雨菲  
行政：林文晶、芦颖

版权声明：本刊所有文章和图片均有版权，未经书面许可不得以  
任何形式转载。本刊有权汇编作品内容、授权所刊内容收入  
国内外文献索引、文摘、全文数据库和出版网站，具有信息网  
络传播权、数字出版权。如有异议，请来稿时声明。本刊所使  
用方正字体经北京北大方正电子有限公司授权许可。

编委会  
编委会主任：庄惟敏  
编委会委员（以姓氏笔画为序）：马岩松、马清运、方振宇、  
王方戟、王昀、王建国、王辉、王路、支文军、孔宇航、  
朱小地、朱文一、朱锺、朱颖心、伍江、华黎、庄葵、  
刘克成、刘骁都、刘家琨、齐欣、孙一民、李东、李兴钢、  
李虎、李晓东、吴耀东、余加、沈磊、张永和、张利、张轲、  
张桦、张頔、张雷、邵韦平、范雪、周畅、周恺、周榕、  
单军、孟建民、孟岩、胡越、查金荣、倪阳、徐全胜、  
常青、黄屈正、黄艳、梅洪元、龚恺、崔彤、崔愷、梁井宇、  
葛家琪、董卫、董丹中、董功、曾坚、赖德森、Bruce Abbey、  
Jurgen Rosemann、Peter Rowe、Luca Molinari

协办机构  
清华大学建筑设计研究院，浙江大学建筑设计研究院，CCDI悉  
地国际，上海日清建筑设计有限公司，启迪设计集团股份有限  
公司

学术支持机构  
中国建筑西北设计研究院有限公司华夏建筑设计研究院，都市  
与建筑设计研究中心，屈培青工作室，第十设计所，西安建筑  
科技大学设计研究总院建筑三院

ADMINISTRATOR: Ministry of Education of the  
People's Republic of China  
SPONSOR: Tsinghua University  
COOPERATION: Beijing Tsinghua Tongheng  
Urban Planning & Design Institute, Beijing  
Institute of Architectural Design Co., Ltd.  
PUBLISHER: World Architecture Magazine  
Publications  
ADDRESS: Editorial Office of World Architecture,  
N-208, School of Architecture, Tsinghua  
University, Beijing 100084, China  
TEL: +86 10 62788125

EMAIL: contribution@wamp.com.cn;  
cooperation@wamp.com.cn  
WEBSITE: http://www.wamp.com.cn  
WECHAT PUBLIC ACCOUNT: WA\_magazine  
MICRO-BLOG: http://weibo.com/wamp  
DOUBAN SITE: http://site.douban.com/wamp

SUBSCRIPTION  
NATIONAL CIRCULATION BUREAU: Beijing  
Periodical Distribution Bureau  
NATIONAL CIRCULATION CODE: 2-191  
PRICE: 45CNY (CHINA), 45USD (OVERSEA)

PRESIDENT: Yin Zhi  
DEPUTY PRESIDENT: Bian Lanchun, Zhao Jingzhao

EDITOR-IN-CHIEF: Zhang Li  
DEPUTY EDITOR-IN-CHIEF: Zhou Rong, Qing Feng  
ASSISTANT EDITOR-IN-CHIEF: Fan Lu

EDITOR OFFICE  
DIRECTOR: Ye Yang, Xiang Linfei  
EDITOR: Xiang Linfei, Ye Yang, Wang Xinxin, Tian Ni, Pang Lingbo,  
WU Chen  
EDITORIAL ASSISTANT: Yan Yuan, Jiang Yingxue  
ENGLISH PROOFREADER: Wang Xinxin

OPERATION OFFICE  
DIRECTOR: Pan Fang  
PLANNING & OPERATION: Wang Shuo, Niu Yufei  
ADMINISTRATIVE DEPT.: Lin Wenjing, Lu Ying

©2022, World Architecture Magazine Publications all rights reserved.  
The contents should not be reproduced in any form, either in whole or  
in part, without written permission from the editorial department.  
The publisher has attempted to trace and acknowledge all sources  
for images used in this magazine, and we apologize for any errors  
and omissions.

EDITORIAL COMMITTEE  
DIRECTOR: Zhuang Weimin  
MEMBERS (In alphabetical order): Bruce Abbey, Chang Qing,  
Cui Kai, Cui Tong, Dong Danshen, Dong Gong, Dong Wei, Fan Xie,  
Fang Zhenning, Ge Jiaqi, Gong Kai, Hu Yue, Hua Li, Huang Juzheng,  
Huang Yan, Kong Yuhang, Lai Delin, Li Dong, Li Hu, Li Xiaodong,  
Li Xinggang, Liang Jingyu, Liu Jiakun, Liu Kecheng, Liu Xiaodu,  
Ma Qingyun, Ma Yansong, Mei Hongyuan, Meng Jianmin,  
Meng Yan, Luca Molinari, Ni Yang, Qi Xin, Jürgen Rosemann,  
Peter Rowe, Shan Jun, Shao Weiping, Shen Lei, Sun Yimin,  
Wang Fangji, Wang Hui, Wang Jianguo, Wang Lu, Wang Yun,  
Wu Yaodong, Wu Jiang, Xu Quansheng, Yu Jia, Zeng Jian,  
Zha Jirong, Zhang Hua, Zhang Ke, Zhang Lei, Zhang Li, Zhang Qi,  
Zhang Yonghe, Zhi Wenjun, Zhou Chang, Zhou Kai, Zhou Rong,  
Zhu Pei, Zhu Wenyi, Zhu Xiaodi, Zhu Yingxin, Zhuang Kui

COORDINATORS  
Architectural Design and Research Institute of Tsinghua University;  
Architectural Design and Research Institute of Zhejiang University;  
CCDI Group; La Cime International Pte. Ltd.; Tus-Design Group Co., Ltd.

SUPPORTERS  
Huaxia Institute of Architectural Design and Research, Urban &  
Architecture Design Research Center, Qu Peiqing Studio, The Tenth  
Design Institute, China Northwest Architecture Design and Research  
Institute Co., Ltd.; Xi'an University of Architecture and Technology,  
Architectural design and Research Institute, 3rd Design Studio



# 目次

北京清河滨水空间 更新整治研究	004	边兰春 让风景融入城市，让生活走进风景
	006	钟舸，何潇 历史地理视角下的北京清河
	013	黄鹤，张璐，黄莉婷，周雅青 北京清河沿线地区功能特色认知
	018	陈宇琳，王英 大城市边缘区滨水空间发展初探——以北京清河海淀段为例
	024	王英，刘健，邵磊，唐燕 城市滨水空间综合整治要素及治理导向——以北京清河海淀段为例
	034	陈宇琳，郑舒文，李雪滢 城市边缘区滨水绿道的使用模式与需求研究——以北京清河海淀段为例
	042	梁思思，袁聪聪，张鹤鸣，林俊彤 城市滨水空间的道路交通可达性分析及提升策略研究——以北京清河海淀段为例
建筑文化	048	大卫·E·库珀 两个小屋的故事：海德格尔、鸭长明和“安居”
	055	贺鼎，胡萍，王子瑜 “三生空间”视角下景德镇传统瓷业遗产类型特征研究
	062	李丽，邵龙，蔡依霖，李库 内蒙古地区传统建筑装饰文化空间分异研究
	071	高欣婷 世园会景观主路径中场所精神的表达
建筑理论	078	张燕来，胡静 从感知到科学：平潭海岛聚落空间形态量化研究
	084	黄也桐，庄惟敏，米凯利·博尼诺 城市更新中的建筑策划应对实践——以都灵费米中学改造项目为例
建筑技术	092	肖冰，吉国华，洪小春，马强 乡村住宅工业化技术体系演化及建构逻辑比较——以江苏为例
	100	殷青，邵滨荟，韩昀松 建筑自适应表皮的环境响应方法研究与应用
工程实录	108	陈建，王静，陈璐 国际化目标视野下徽派建筑地域文脉的现代演绎——中国科学技术大学国际金融研究院
简讯	112	

# Contents

## Study on the Regeneration of Qinghe River Waterfront in Beijing

- 004 **BIAN Lanchun**  
Blending Landscape into the City, Bringing Life into the Landscape
- 006 **ZHONG Ge, HE Xiao**  
A Historical Geographical Perspective on the Qinghe River in Beijing
- 013 **HUANG He, ZHANG Lu, HUANG Liting, ZHOU Yaqing**  
Characteristics of Functional Areas Along the Qinghe River in Beijing
- 018 **CHEN Yulin, WANG Ying**  
Preliminary Study on the Development of Waterfront Space in the Urban Fringe of Megacities:  
A Case of Haidian Section of Qinghe River in Beijing
- 024 **WANG Ying, LIU Jian, SHAO Lei, TANG Yan**  
Guiding Factors and Orientations for Improving Urban Waterfront Space:  
A Case Study of Haidian Section of Qinghe River in Beijing
- 034 **CHEN Yulin, ZHENG Shuwen, LI Xueying**  
Study on the Use Patterns and Needs of Waterfront Greenway in the Urban Fringe:  
A Case of the Haidian Section of Qinghe River in Beijing
- 042 **LIANG Sisi, YUAN Congcong, ZHANG Heming, LIN Juntong**  
Design Approaches in Promoting the Traffic Accessibility of Urban Waterfront Space:  
A Case of the Haidian Section of Qinghe River in Beijing

## Culture

- 048 **David E. Cooper**  
A Tale of Two Huts: Heidegger, Chōmei and "Dwelling"
- 055 **HE Ding, HU Ping, WANG Ziyu**  
Study on the Typological Characteristics of Traditional Porcelain Heritage in Jingdezhen  
from the Perspective of Production-Living-Ecology Space
- 062 **LI Li, SHAO Long, CAI Yilin, LI Ku**  
Spatial Differentiation of Traditional Architectural Decoration Culture in Inner Mongolia
- 071 **GAO Xinting**  
The Expression of the Genius Loci in the Main Path Planning of the International  
Horticultural Exposition

## Theory

- 078 **ZHANG Yanlai, HU Jing**  
From Perception to Science: A Quantitative Study of Island Settlement Spatial Morphology  
in Pingtan Island
- 084 **HUANG Yetong, ZHUANG Weimin, Michele Bonino**  
Coping Practice of Architectural Programming in Urban Renewal: A Renovation Case of  
Enrico Fermi School in Turin

## Technology

- 092 **XIAO Bing, JI Guohua, HONG Xiaochun, MA Qiang**  
Comparison of the Evolution and Construction Logic of Rural Housing Industrialization  
Technology System: Take Jiangsu Province as an Example
- 100 **YIN Qing, SHAO Binhui, HAN Yunsong**  
Research and Application of the Environmental Response Method of Adaptive Building Façade

## Project in Reality

- 108 **CHEN Jian, WANG Jing, CHEN Lu**  
Modern Interpretation of the Regional Culture of Huizhou Architecture from an International  
Perspective: Institute of International Finance of University of Science and Technology of China

## Briefs

112





校园建筑：静谧中的进化

Institutional Architecture: Silent Evolutions | 202203

ISSN 1002-4832



主办：清华大学  
出版：世界建筑杂志社  
国内统一连续出版物号：CN 11-1847/TU  
国际标准连续出版物号：ISSN 1002-4832  
邮发代号：2-191

网址：<http://www.wamp.com.cn>  
投稿：[contribution@wamp.com.cn](mailto:contribution@wamp.com.cn)  
合作：[cooperation@wamp.com.cn](mailto:cooperation@wamp.com.cn)  
定价：45CNY  
海外空运：45USD