

THE IPAD PRO BUILT-IN LIDAR SENSOR: 3D RAPID MAPPING TESTS AND QUALITY ASSESSMENT

*Original*

THE IPAD PRO BUILT-IN LIDAR SENSOR: 3D RAPID MAPPING TESTS AND QUALITY ASSESSMENT / Spreafico, A.; Chiabrando, F.; Teppati Lose', L.; Giulio Tonolo, F.. - In: INTERNATIONAL ARCHIVES OF THE PHOTOGRAMMETRY, REMOTE SENSING AND SPATIAL INFORMATION SCIENCES. - ISSN 2194-9034. - ELETTRONICO. - XLIII:B1(2021), pp. 63-69. [[10.5194/isprs-archives-XLIII-B1-2021-63-2021](https://doi.org/10.5194/isprs-archives-XLIII-B1-2021-63-2021)]

*Availability:*

This version is available at: 11583/2911086 since: 2021-07-05T19:49:53Z

*Publisher:*

Copernicus Publications

*Published*

DOI:[10.5194/isprs-archives-XLIII-B1-2021-63-2021](https://doi.org/10.5194/isprs-archives-XLIII-B1-2021-63-2021)

*Terms of use:*

This article is made available under terms and conditions as specified in the corresponding bibliographic description in the repository

*Publisher copyright*

(Article begins on next page)

# THE IPAD PRO BUILT-IN LIDAR SENSOR: 3D RAPID MAPPING TESTS AND QUALITY ASSESSMENT

A. Spreafico <sup>1\*</sup>, F. Chiabrando <sup>1</sup>, L. Teppati Losè <sup>1</sup>, F. Giulio Tonolo <sup>1</sup>

<sup>1</sup> Lab G4CH, Laboratory of Geomatics for Cultural Heritage, DAD, Dipartimento di Architettura e Design, Politecnico di Torino, Viale Mattioli 39, 10125 Torino

(alessandra.spreafico, filiberto.chiabrando, lorenzo.teppati, fabio.giuliotonolo)@polito.it

Commission I, WG I/5

**KEY WORDS:** 3D metric survey, LiDAR, 3D positioning, point cloud analyses, rapid mapping.

## ABSTRACT

The main goal of this ongoing research is the evaluation of the iPad Pro built-in LiDAR sensor for large scale 3D rapid mapping. Different aspects have been considered from the architectural surveying perspective and several analyses were carried out focusing on the acquisition phase and the definition of best practices for data collection, the quantitative analysis on the acquired data and their 3D positional accuracy assessment, and the qualitative analysis of the achievable metric products. Despite this paper is a preliminary analysis and deeper studies in various application environment are necessary, the availability of a LiDAR sensor embedded in a tablet or mobile phone, appears promising for rapid surveying purposes. According to test outcomes, the sensor is able to rapidly acquire reliable 3D point clouds suitable for 1:200 architectural rapid mapping; the iPad Pro could represent an interesting novelty also thanks to its price (compared to standard surveying instruments), portability and limited time required both for data acquisition and processing.

## 1. INTRODUCTION

In 2020 Apple released the new iPad Pro and iPhone 12 Pro with built-in LiDAR (Light Detection and Ranging) sensor representing a considerable innovation in the market segment of tablet and smartphone. The LiDAR embedded in these two devices is mainly devoted to Augmented Reality (AR) applications and some tests on its performances in this field have been already carried out (e.g. <https://www.vgis.io/2020/12/02/lidar-in-iphone-and-ipad-spatial-tracking-capabilities-test-take-2/>). The use of iPad Pro and iPhone 12 Pro for metric survey purposes is obviously of high interest for the research community, for both outdoor and indoor environments, and especially when speed, portability and cost-benefit optimisation are essential requirements, not always easy to meet using high-end surveying instruments. Also, the technical features, cost and manoeuvrability of both devices represent an interesting solution when compared to other more consolidated range-based techniques, already employed in various fields, such as Terrestrial Laser Scanning (TLS) or Time of Flight (TOF) cameras (Chiabrando et al., 2011). The new iPad Pro could be compared to recently studied sensors not specifically developed for 3D metric survey; cameras embedded in smartphones are tested for metric reconstruction as low cost and rapid solutions in case of complex environment as underground cave (Dabove et al., 2019) or for small objects (Vogt et., 2021). Other studies are focused on flexible and light weight mobile mapping systems built-in tablet, as in the case of an object survey with the Lenovo tablet (Donlic et al., 2017), or wearable instrument, as the Microsoft HoloLens tested for metric survey of architectures (Khoshelham et al., 2019). Today devices as iPad Pro and iPhone 12 Pro are commonly used and can be easily stored in a pocket or a bag; the integration of a LiDAR sensor can speed up both acquisition and processing phase, so their uses in surveying could be widespread by many professionals in different fields.

## 2. SENSORS AND DATA

The tests presented in this manuscript are based on an iPad Pro, a small (28 x 21.5 cm<sup>2</sup>) and lightweight (about 650 g) device, provided with 8-core GPU (Neural Engine, A12Z Bionic), and dual RGB cameras (Apple). The built-in LiDAR is composed by a matrix of a Vertical Cavity Surface-emitting Laser (VCSEL) and a direct Time of Flight (dToF) Near Infra-Red (NIR) CMOS Image Sensor (CIS), with a Single Photon Avalanche Diode (SPAD) array (<https://www.systemplus.fr/reverse-costing-reports/apple-ipad-pro-11s-lidar-module/>). It means that iPad Pro lidar is “a solid-state LiDAR that creates a fine grid of points, with the distance to each point measured individually” (<https://www.vgis.io/2020/12/02/lidar-in-iphone-and-ipad-spatial-tracking-capabilities-test-take-2/>). It must be highlighted that the rate of measurements enables the acquisition of multitemporal 3D point clouds of moving objects. Unfortunately, at least until the time of writing, no official technical specifications have been released by Apple. A limited number of iOS applications are today available to test the survey capabilities of the LiDAR sensor at the start of the research: nevertheless, the number is constantly growing. Among the existing applications, SiteScape (<https://www.sitescape.ai/>) - developed at the beginning of 2020 - seems to be the one more oriented in the use of 3D point cloud for documenting the surveyed area, while the approach of the other apps (Polycam, RoomScan LiDAR, 3D Scanner App, LiDAR Scanner 3D) is related to the use of mesh derived from the acquired point clouds. Moreover, SiteScape was selected for additional reasons: possibility to customize acquisition parameters (point cloud density and acquisition mode), real-time visualization of acquired 3D data, automatic storage of the acquired point cloud (in separate \*.ply files), automatic co-registration of subsequent scans, free of charge.

\* Corresponding author

In the performed tests, two different types of acquisition configurations were tested: static acquisitions mainly aimed at evaluating the sensor characteristics and dynamic acquisitions aimed at analysing the 3D point clouds. For the static acquisition, the iPad Pro was mounted on a photographic tripod to acquire static scans in a controlled indoor environment with diffuse light (Figure 1); a white vertical and planar wall was scanned from different distances (1,2,3,4 meters). For each distance 6 scans were acquired combining two acquisition configuration (max area, max detail) and three types of quality (low, medium, high) available in SiteScape settings, for a total of 24 scans. The max area configuration is aimed at acquiring a longer scan with a lower density, the max detail increases eightfold the density of the acquired 3D points limiting the scan to a smaller area. The density of the point cloud is also influenced by the selected quality type: high (medium) quality corresponds to a quadruple (double) density with respect to low quality.

In the dynamic configuration the iPad Pro was handled by an operator outdoor with natural illumination (cloudy day). In this second test, mainly devoted to the analyses of the sensor features and capabilities to reconstruct geometries, an existing 3D calibration test field (created ad hoc for digital and 360° cameras calibration as described in Teppati Losè et al., 2018) was employed as test area (Figure 2). The test field is composed by an outdoor emergency stair, connected to a historical building, representing a diversified geometrical structure composed by various architectural features and materials (mainly plaster and concrete).



**Figure 1.** Static configuration of the iPad mounted on a tripod to acquire the white vertical wall.

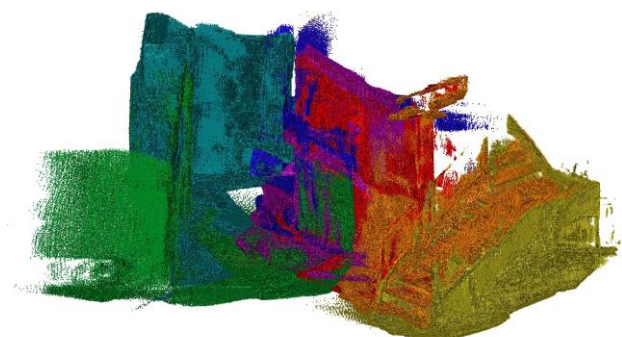


**Figure 2.** Photo of the test area.

The test field has been surveyed by the operator trying to maintain a steady and slow pace while walking, with distances between the iPad Pro and the surveyed surfaces between 1 and 3 meters. The iPad was handled following horizontal or vertical movements with the main axis of the sensor perpendicular to the surfaces, controlling the point cloud in real time on the iPad screen during the acquisition. Two different resolution of the iPad Pro were considered to test the lowest and highest level of detail on the same portion of the test area. The same trajectory was followed performing a not closed loop. The dataset (a) is a single acquisition with the lowest resolution (max area – low) lasting 4 minutes for recording the test field (Figure 3, top). The dataset (b) has highest (max detail - high) resolution and required about 20 minutes to record 7 different scans (Figure 3, bottom). Each scan was captured with an adequate overlapping to the consecutive scan (Figure 4). The number of scans required for mapping the area is connected to the employed application and to the iPad limit, for each scan is possible to store a maximum number of 11 million points that correspond to 160 MB file weight (.ply format).



**Figure 3.** Point clouds of the dataset (a) composed by a single iPad Pro scan with lowest resolution, and dataset (b) composed by 7 overlapping point clouds with highest resolution in SiteScape app.



**Figure 4.** Dataset (b) composed by 7 overlapping point clouds acquired by iPad Pro with SiteScape app. False colour visualization (each colour represents a different scan).

In order to obtain a ground truth, the test field was also mapped with 4 scans (Figure 5) by a TLS, the Faro Focus<sup>3D</sup> X330, in about 30 minutes with 1/5 resolution (7.67 mm between

adjacent points at 10 m distance) and 4x quality (each point is measured 4 times), representing the dataset (c). The TLS point clouds were selected as reference data for accuracy assessment.



Figure 5. TLS scans of the test area composing the dataset (c).

Finally, to have Ground Control Points (GCPs) and Check Points (CPs) on the test field nine artificial markers have also been positioned and measured with a total station (mean RMS on the markers < 1 cm). Table 1 shows the recorded number of points and the corresponding file size of each dataset.

Datasets	Characteristics	
	N° of points (mln)	File weight (MB)
(a) iPad - Single scan	2.5	36
(b) iPad - 7 scans	42	932
(c) Faro scans	83	1971

Table 1. Characteristics of the acquired point clouds.

### 3. METODOLOGY

As mentioned in the introduction, two different analyses have been carried out: the first one is aimed at examining the characteristics of the sensor and the application settings, the second one to estimate the point cloud quality, its geometrical reconstruction and its geometrical accuracy in comparison to the topographic Control Points measures and to the TLS dataset.

The 24 static scans are considered to evaluate the different settings available in SiteScape as well as the sensors main characteristics exploiting CloudCompare software to compute relevant metrics. The composition of the sensor matrix can be analysed, enabling the counting of the number of rows and columns, and the total number of points for each of the 6 possible settings: max area low, max area medium, max area high, max detail low, max detail medium, max detail high. Then the average distance between two consecutive points of the matrix of the 6 possible settings are measured for each distance from the surface (1,2,3,4 m) to assess the resolution of each scan.

The dynamic scans have been analysed to compute roughness and density (number of neighbours) of 1 m<sup>2</sup> point cloud subset of the concrete stair of the outdoor test field. The iPad Pro point clouds with lowest and highest resolution are compared to the TLS scans considered as ground truth.

For the 3D positional accuracy assessment, the point clouds recorded in the complex outdoor environment are studied in Leica Cyclone 3DR software (<https://leica-geosystems.com/>).

For the quality assessment evaluation four point clouds were considered:

- (A): no editing has been applied to dataset (a), i.e. iPad Pro single scan acquired with the lowest resolution;
- (B1): dataset (b) has not been edited and the 7 iPad Pro scans with highest resolution were merged exploiting SiteScape registration;
- (B2): dataset (b) has been edited applying a noise filter and and the 7 iPad Pro scans with highest resolution were co-registered using ICP algorithm in Leica Cyclone 3DR;
- (C): the 4 TLS scans (dataset (c)) have been co-registered with ICP algorithm in Faro Scene software (<https://www.faro.com/>): the final point cloud was edited erasing the point not included in the same area of the iPad Pro datasets.

Four analyses were performed to validate the iPad Pro point clouds. In the first analysis accuracy and precision of each point cloud (A, B1, B2, C) were validated on the artificial targets, using 5 points as GCPs and 4 as CPs; mean and standard deviation values for GCPs/CPs are computed for each point cloud. In the second analysis the ICP algorithm is applied to register (A), (B1) and (B2) points cloud to (C) point cloud as reference; mean and standard deviation values are calculated for each point cloud. Additionally, the histogram of cloud-to-cloud distances were computed for the same three datasets in the third analysis; for each point cloud three range of distances to the reference point cloud (C) are considered (0-2 cm, 2-5 cm, 5-10 cm) to compare the distance distribution for each of them. Finally, the last analysis is performed again on a smaller portion of the test area, excluding portions of the point cloud characterised by gross errors.

## 4. RESULTS AND DISCUSSION

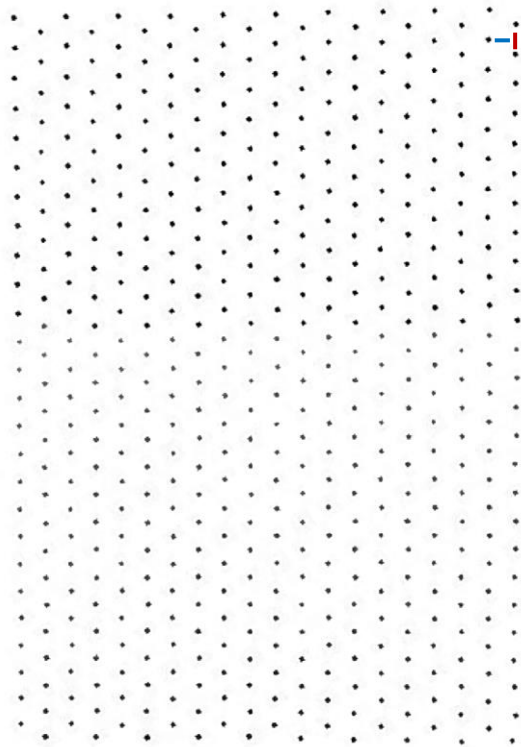
### 4.1 Sensor analysis

It is important to highlight, as reported before, that all the consideration related to the iPad Pro sensor, are based on data acquired through the SiteScape application: other applications may lead to different results.

First of all the effective maximum distance of acquisition was verified: the sensor reaches an orthogonal distance of 4.9 m from the plane of the sensor, which is in line with the declared maximum range of 5 meters (<https://www.apple.com/newsroom/2020/03/apple-unveils-new-ipad-pro-with-lidar-scanner-and-trackpad-support-in-ipados/>).

The iPad Pro sensor measure points organized in a regular matrix following a diagonal pattern (Figure 6). The number of columns and rows depends on the mode and the quality SiteScape settings (Table 2), while the field of view is constant. According to Table 2, the total number of acquired points increase exponentially depending on the settings: starting from the lowest resolution (max area – low) with 520 points, the other resolutions increase by a factor of 2 (max area – medium), 4 (max area – high), 8 (max detail – low), 16 (max detail – medium), 32 (max detail – high), as shown in Figure 7.

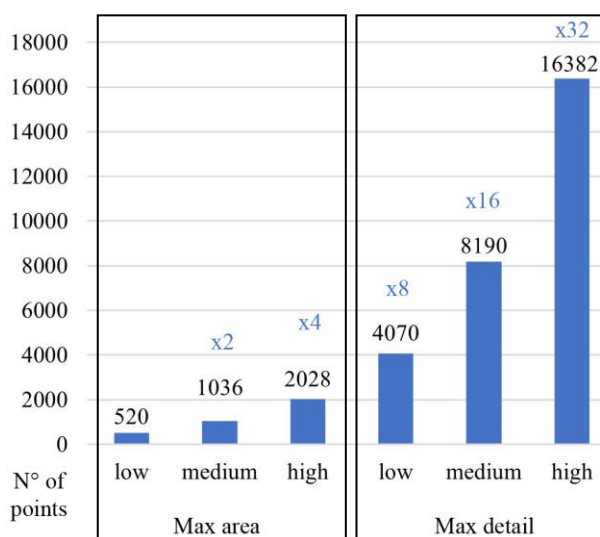
The vertical distance between rows and the horizontal distance between columns (corresponding to the red and blue lines in Figure 6) of the acquired point matrix were measured for each acquisition distance from the surface and for each possible setting, combining both mode and quality to identify the spatial resolution (Table 3). Vertical and horizontal distances are equal, so this measure can be considered the sensor resolution in ground units. The max detail high quality is the highest spatial resolution setting, reporting a distance between two points of about 1 cm at 1 meter distance from the object, covering with more than 16000 points an area of about 97x127 cm<sup>2</sup>, while the lowest resolution – corresponding to the max area low settings –



**Figure 6.** Example of the matrix of point of the max area low resolution static acquisition. In red the vertical distance and in blue the horizontal distance between two adjacent points.

Acquisition settings		Number of	
		columns	rows
max detail	high	111	148
	medium	78	105
	low	55	74
max area	high	39	52
	medium	28	37
	low	20	26

**Table 2.** Number of rows and columns of the Apple LiDAR matrix for each quality setting in SiteScape.



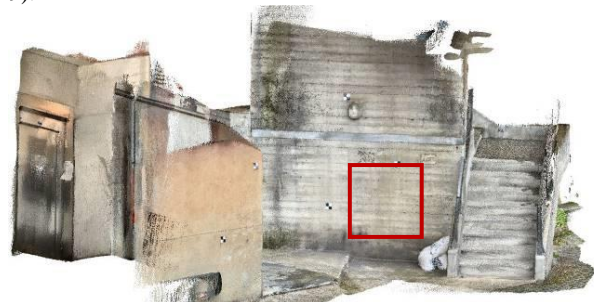
**Figure 7.** Exponential increase of the total number of points recorded by the sensor according to the combination of mode (max area, max detail) and quality (low, medium, high).

has 5.2 mm distance between two points at 1 m distance. The point distances increase with an almost linear proportion with respect to the distance from the recorded surface.

		Distance from the object (m)			
		1	2	3	4
		Point distances (cm)			
max detail	high	0.9	1.9	2.6	3.3
	medium	1.3	2.6	3.5	4.6
	low	1.8	3.6	4.9	6.6
max area	high	2.6	4.9	7.5	9.6
	medium	3.7	7.1	10.1	13.8
	low	5.2	9.9	14.3	19.1

**Table 3.** Vertical/horizontal distances between points acquired by iPad Pro sensor.

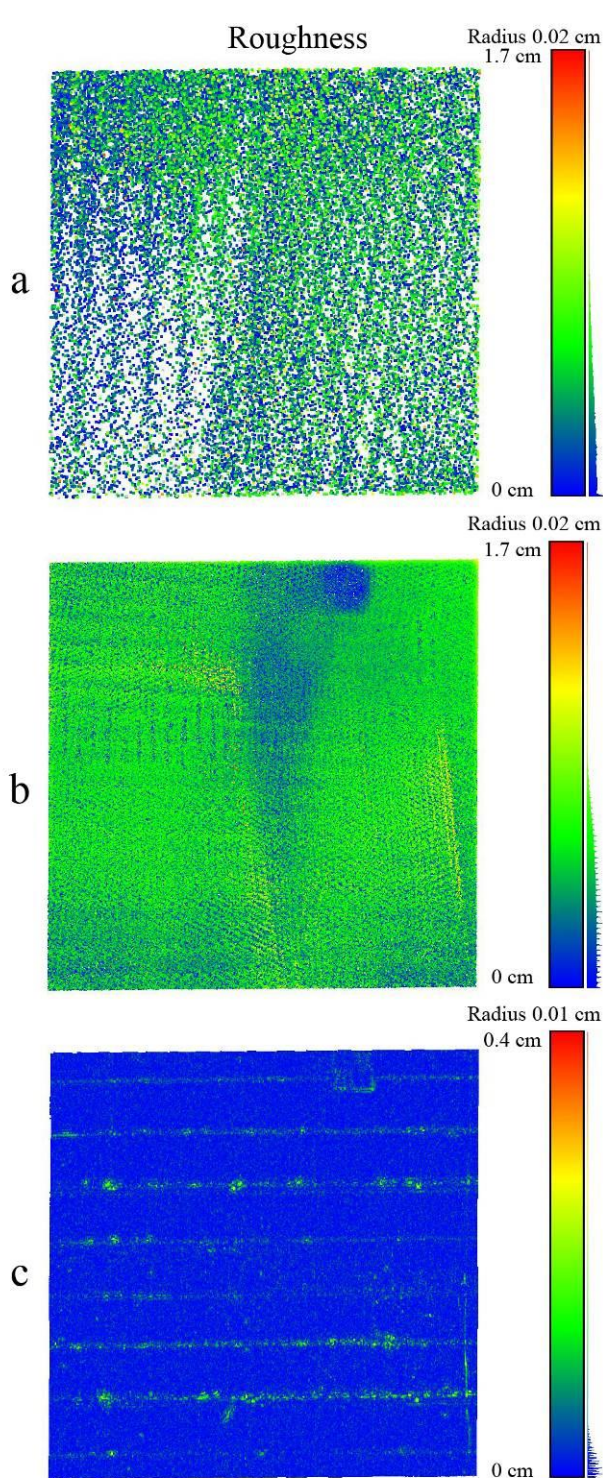
The roughness of the iPad Pro point cloud was assessed in comparison to the one of the TLS point cloud considering the same portion of the vertical wall of the stair (Figure 8) that according to the results related to the TLS scans could be considered flat. Indeed, the roughness of a single TLS point cloud - dataset (c) - with a kernel radius of a sphere equal to 1 cm shows that 99.5% of the points are far less than 1 mm from the best fitting plane calculated considering the points in the sphere. The iPad Pro point cloud acquired with lowest resolution - dataset (a) - has 97.4% of points with a roughness lower than 1 cm in a sphere of radius 2 cm. The point cloud with highest resolution - dataset (b) - is similar to (a) with the 98.7% of points with roughness values lower than 1 cm (Figure 9).



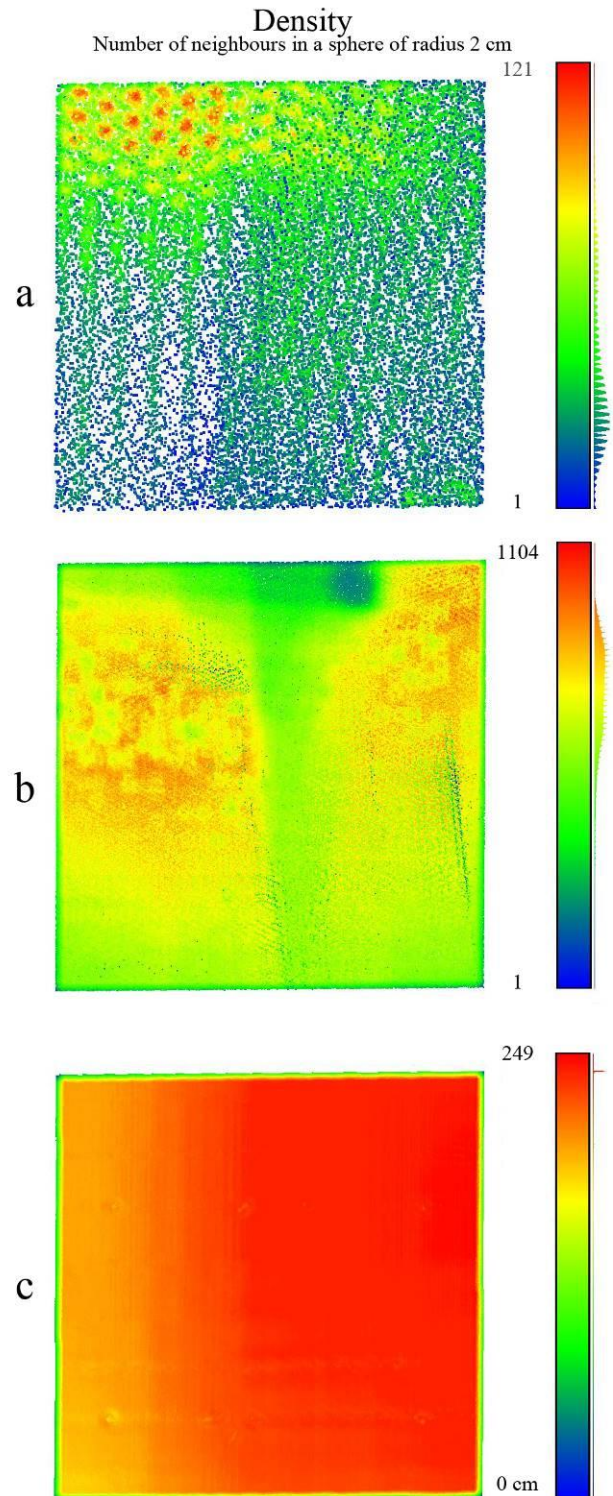
**Figure 8.** Portion of the wall where roughness and density are computed on an area of 1 m<sup>2</sup>.

Therefore, the iPad point cloud roughness does not change according to the application settings of resolution, being related to the accuracy of the sensor regardless the resolution settings. In conclusion according to the analysis of the roughness, (TLS ~ 1 mm, iPad Pro ~ 1 cm) the TLS point cloud is characterised by a roughness of one magnitude order lower than the tested sensor data: dataset (c) can be therefore considered as ground truth for validating the iPad Pro scans.

A further evaluation of the characteristics of the acquired point clouds has been performed considering the density, calculated as number of neighbours in a sphere of 2 cm radius in 1 m<sup>2</sup> area (the same portion employed for the roughness computation). In Figure 10 yellowish/reddish colour represents higher density, greenish/bluish colour lower density, while white is used for missing points. The results of this test show the homogeneous distribution in the TLS point cloud, noticeable by the red colour and low standard deviation (Table 4, c), while iPad Pro point clouds (Table 4, a,b) show not homogeneous distribution with high standard deviation, as expected due to the influence of the operator behaviour (movements and distances from the mapped surface).



**Figure 9.** Roughness (and frequency histogram on the right side of the legend) in a sphere of radius 2 cm of the (a) lowest resolution iPad point cloud and (b) single higher resolution iPad point cloud, (c) in a sphere radius of 1 cm of a single TLS point cloud in an area of 1 m<sup>2</sup>.



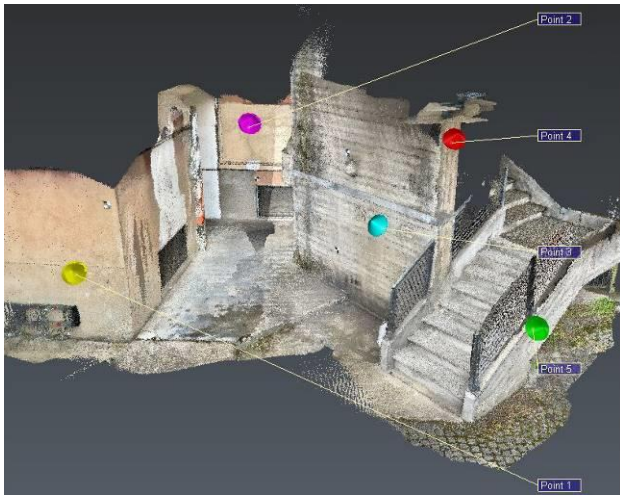
**Figure 10.** Density (and frequency histogram on the right side of the legend) expressed as number of neighbours in a sphere of radius 2 cm in an area of 1 m<sup>2</sup> of: (a) the lowest resolution iPad point cloud, (b) single higher resolution iPad point cloud, (c) single TLS point cloud.

Point cloud	Density (points/m <sup>2</sup> )	
	mean	St. dev.
(a) iPad – lowest resolution	40	24
(b) iPad – highest resolution	702	160
(c) Faro	227	21

**Table 4.** Mean and standard deviation of the density (number of neighbours) in 1 m<sup>2</sup> for a single TLS scan and the two resolutions of the single iPad scans.

#### 4.2 Positional accuracy assessment

As reported before, each dataset has been oriented using 5 GCPs and 4 CPs to evaluate the point cloud 3D positional precision (Figure 11).



**Figure 11.** GCPs collimated in the point cloud (A) to evaluate the 3D accuracy on measured points.

The 4 datasets (A, B1, B2 and C) described in section 3 have been analyzed, assessing mean and standard deviation values of the RMS error (based on the differences of coordinates of the point cloud with respect to the measured GCP/CP), reported in Table 5.

Point cloud	5 GCPs		4 CPs	
	RMS mean (cm)	St. dev. (cm)	RMS mean (cm)	St. dev. (cm)
(A) iPad - Single scan	1.8	0.7	1.8	0.8
(B1) iPad - raw scans	1.9	0.6	1.5	0.7
(B2) iPad - edited scans	1.9	0.6	1.4	0.6
(C) Faro	0.2	0.1	0.3	0.1

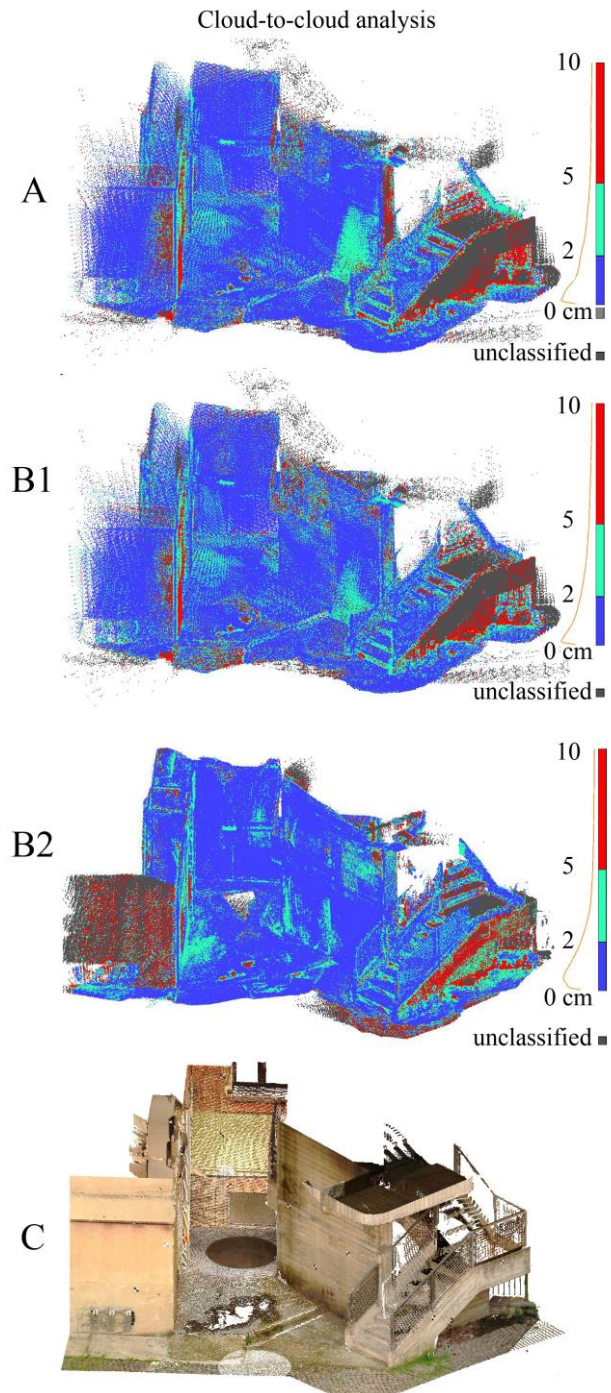
**Table 5.** Evaluation of the point clouds positioning accuracy: RMS values on GCP/CP.

As expected, the RMS mean and standard deviation values of the TLS dataset (C) are millimetric, confirming the assumption they can be used as reference dataset for the accuracy assessment step.

The iPad Pro scans are characterised by an RMS mean value lower than 2 cm and a standard deviation lower than 1 cm for both point dataset (A), (B1) and (B2).

Point cloud	ICP algorithm results	
	RMS mean (cm)	RMS St. dev. (cm)
(A) iPad - single scan	1.9	2.6
(B1) iPad - raw scans	2.5	3.4
(B2) iPad - edited scans	1.8	2.4

**Table 6.** ICP co-registration results of the different iPad Pro dataset (A, B1 and B2) to the TLS scans (C).



**Figure 12.** Cloud-to-cloud distances analysis from TLS point cloud (C) of: (A) the lowest resolution iPad point cloud, (B1) raw higher resolution iPad point cloud, (B2) edited higher resolution iPad point cloud. In blue points within a distance range of 0-2 cm, in teal 2-5 cm, in red 5-10 cm, in grey gross errors.

The registration process using ICP algorithm between the iPad scans and the TLS scans as reference reports the same results (RMS ~ 2 cm ± 3 cm) for the point clouds (A), (B1) and (B2), as visible in Table 6. Furthermore, the cloud-to-cloud distance analysis has been performed comparing the TLS point cloud and the iPad Pro clouds in the different tested configuration. The results show slightly better results for (B2) point cloud than the (A) and (B1), confirming that the application of filter and ICP algorithm between iPad scans before the alignment to the TLS dataset improve the overall registration process (Figure 12 and Table 7).

Point cloud	Cloud to cloud distance		
	0-2 cm	2-5 cm	5-10 cm
(A) iPad - single scan	60%	28%	12%
(B1) iPad - raw scans	56%	29%	15%
(B2) iPad - edited scans	67%	25%	8%

**Table 7.** Evaluation of the positioning through ICP algorithm to the TLS scans by means of cloud-to-cloud distance.

The main critical parts of the iPad Pro point clouds are located on the side wall of the stair and in the left wall (red colour in Figure 13), probably because they are at the endpoints of the iPad scans. The last performed evaluation was carried after the removal of these portions. As reported in Table 8, if these two portions are not considered in the cloud-to-cloud distance analysis, at least 90% of the points of all datasets are within 5 cm distance from the reference point cloud (97% for B2).



**Figure 13.** Point cloud showing the not considered portion (red colour) and the considered portion (blue colour) for the cloud-to-cloud distance analysis.

Point cloud	Cloud to cloud distance		
	0-2 cm	2-5 cm	5-10 cm
(A) iPad - single scan	61%	29%	10%
(B1) iPad - raw scans	70%	24%	6%
(B2) iPad - edited scans	76%	21%	3%

**Table 8.** Evaluation of the positioning through ICP algorithm to the TLS scans by means of cloud-to-cloud distance without considering portion where gross errors appeared in the previous analysis.

## 5. CONCLUSIONS

The main aim of the paper is a preliminary study about the new LiDAR sensor integrated in the iPad Pro, released by Apple in 2020 with the main purpose to apply it in Augmented Reality field. The performed analyses were focused on the metric characteristics evaluation of the point clouds acquired by the iPad Pro using the free SiteScape application. The sensor analysis allows to understand that it is possible to acquire data with six different resolution, letting to the operator to establish the point cloud density (from 500 points in a single static acquisition up to 16000 points). As far as the 3D positional assessment is concerned, evaluated in comparison to reference

points measured via topographic method and using TLS data, the iPad point clouds have a centimetric precision and accuracy, suitable for 1:200 map scale (precision 2 cm, accuracy 4 cm, according to commonly adopted Italian standards). The roughness analysis confirms the noise over a flat surface is comparable to the aforementioned centimetric 3D positional accuracy. The density analysis highlights the influence of the acquisition modality, leading to heterogenous density values. In conclusion, according to the first tests the LiDAR sensor integrated in the iPad Pro seems to be very promising in the architectural surveying field as portable cost-efficient 3D scanner, considering its low cost, portability, speed, easy usability especially in articulated complex within a range of 4 meters. Further tests will be performed to explore different iOS applications available on the market.

## REFERENCES

- Apple, iPad Pro, <https://www.apple.com/it/ipad-pro/specs/> (8 January 2021)
- Apple, Newsroom, <https://www.apple.com/newsroom/2020/03/apple-unveils-new-ipad-pro-with-lidar-scanner-and-trackpad-support-in-ipados/> (20 April 2021)
- Chiabrando, F., Piatti, D., Rinaudo, F., 2011. New sensors for cultural heritage metric survey: the ToF cameras. *Geoinformatics FCE CTU*, 6, 307-313.
- Dabove, P., Grasso, N., Piras, M., 2019. Smartphone-based photogrammetry for the 3D modeling of a geomorphological structure. *Applied Sciences*, 9(18), 3884, <https://doi.org/10.3390/app9183884>
- Donlic, M., Petkovic, T., and Pribanic, T., 2017. On Tablet 3D Structured Light Reconstruction and Registration. In: *IEEE International Conference on Computer Vision Workshop (ICCVW)*, 2462-2471, doi: 10.1109/ICCVW.2017.290.
- Khoshelham, K., Tran, H., and Acharya, D., 2019. Indoor mapping eyewear: geometric evaluation of spatial mapping capability of Hololens, *Int. Arch. Photogramm. Remote Sens. Spatial Inf. Sci.*, XLII-2/W13, 805–810, <https://doi.org/10.5194/isprs-archives-XLII-2-W13-805-2019>.
- Sistem Plus Consulting, <https://www.systemplus.fr/reverse-costing-reports/apple-ipad-pro-11s-lidar-module/> (2 February 2021)
- SiteScape, homepage, <https://www.sitescape.ai/> (2 February 2021)
- Teppati Losè, L., Chiabrando, F., Spanò, A., 2018. Preliminary evaluation of a commercial 360 multi-camera RIG for photogrammetric purposes. *Int. Arch. Photogramm. Remote Sens. Spatial Inf. Sci.*, 42(2), 1113–1120. <https://doi.org/10.5194/isprs-archives-XLII-2-1113-2018>
- vGis, 2020. <https://www.vgis.io/2020/12/02/lidar-in-iphone-and-ipad-spatial-tracking-capabilities-test-take-2/> (1 February 2021)
- Vogt, M.; Rips, A.; Emmelmann, C., 2021. Comparison of iPad Pro®'s LiDAR and TrueDepth Capabilities with an Industrial 3D Scanning Solution. *Technologies* 9, 25. <https://doi.org/10.3390/technologies9020025>