

Dynamic simulation of existing buildings: considerations on the model calibration

Original

Dynamic simulation of existing buildings: considerations on the model calibration / Angelotti, Adriana; Ballabio, Micol; Mazzarella, Livio; Cornaro, Cristina; Parente, Gianmarco; Frasca, Francesca; Prada, Alessandro; Baggio, Paolo; Ballarini, Ilaria; De Luca, Giovanna; Corrado, Vincenzo. - In: BUILDING SIMULATION CONFERENCE PROCEEDINGS. - ISSN 2522-2708. - ELETTRONICO. - (2020), pp. 4165-4172. (Intervento presentato al convegno Building Simulation 2019: 16th IBPSA Conference tenutosi a Rome (Italy) nel 2-4 September 2019) [10.26868/25222708.2019.210439].

Availability:

This version is available at: 11583/2808860 since: 2021-12-15T09:48:55Z

Publisher:

IBPSA

Published

DOI:10.26868/25222708.2019.210439

Terms of use:

This article is made available under terms and conditions as specified in the corresponding bibliographic description in the repository

Publisher copyright

(Article begins on next page)

Dynamic simulation of existing buildings: considerations on the model calibration

Adriana Angelotti¹, Micol Ballabio¹, Livio Mazzarella¹, Cristina Cornaro², Gianmarco Parente²,
Francesca Frasca³, Alessandro Prada⁴, Paolo Baggio⁴, Ilaria Ballarini⁵, Giovanna De Luca⁵,
Vincenzo Corrado⁵

¹Dipartimento di Energia Politecnico di Milano, Milano, Italy

²Dipartimento di Ingegneria dell'Impresa, Università degli Studi di Roma Tor Vergata, Roma, Italy

³ Dipartimento di Fisica, Università La Sapienza, Roma, Italy

⁴Dipartimento di Ingegneria Civile, Ambientale e Meccanica, Università di Trento, Trento, Italy

⁵Dipartimento Energia, Politecnico di Torino, Torino, Italy

Abstract

Dynamic energy simulation is increasingly used to design retrofit interventions in existing buildings. Energy savings are correctly predicted if the simulation model is carefully calibrated against measured data. In this study the same building storey is simulated by four different research groups with different dynamic simulation tools (EnergyPlus, TRNSYS, IDA ICE). The building envelope is simulated in free floating and a parametric analysis to envelope properties and users' behaviour is carried out. A set of basic information and measurements on the building is made available to three groups, while detailed information and measured data are provided to the fourth one. From the comparison among calibrated models it is concluded that, for a good calibration of a well-insulated building model, the absence of data regarding users' behaviour can be more critical than detailed measurements on the envelope properties.

Introduction

Building energy simulation (BES) is a powerful tool to design new energy efficient buildings and to identify energy retrofit and management interventions on existing ones. The second kind of application requires an accurate calibration of the simulation model against monitoring data, in order to trust the simulation results and achieve reliable predictions of the potential energy savings.

Although the calibration phase is crucial, a shared methodology is presently lacking: different approaches can be found in literature, regarding the kind and the quality of the metered data, the manual/automatic methodology, statistical indexes to be used, the uncertainty of the simulation tools etc. (Coakley et al., 2014; Fabrizio and Monetti, 2015; Prada et al. 2019). The few existing guidelines, such as ASHRAE Guideline 14 (ASHRAE, 2002), basically provide criteria and acceptable limits to consider a model calibrated. Within this framework, calibration is highly dependent on the user's skill and experience.

Multi-stage building energy model calibration, where the building and systems are divided into sub-models and then individually calibrated, has proved to achieve more accurate results than global calibration (Cacabelos et al., 2017). In a previous paper by the authors (Angelotti et al., 2018) the sub-modelling approach was brought to the single wall limit. A methodology to calibrate the thermo-

physical properties of the walls was suggested as a first step towards the envelope calibration, in case detailed measurements related to heat flows, internal and surface temperatures are available. This approach is possible even within dynamic simulation tools requiring at least the modelling of a thermal zone, through a *fictional thermal zone method*.

Clearly, in order to adopt a multi-stage calibration, measured data at a global level such as energy consumption are not sufficient. Measurements referring to individual components or behaviors are needed. Detailed measurements can refer to the building envelope thermal response, to the HVAC systems inputs/outputs, or even to the occupants' behaviour. The influence of the latter on the buildings energy performance is increasing, as building envelopes and systems become more and more optimised. The modelling of occupant behaviour has been the focus of the recently concluded IEA EBC Annex 66 (Yan et al., 2017).

Therefore, it may be argued that the quality and the quantity of measured data available to energy modellers orientate the modelling, the calibration approach and possibly the calibration results. This issue is confronted in this paper, where a comparison is carried out between models and calibrations based on the one side on detailed monitoring and on the other side on basic monitoring.

Methodology

In this study an intermediate floor of an existing residential building is simulated by four different research groups (PoliTO, PoliMI, UniTN, UniTOV), each using a dynamic simulation tool (EnergyPlus, TRNSYS and IDA ICE). PoliMI and UniTN both adopt TRNSYS 17.

The building envelope is simulated in free floating, as a first step of a multi-stage calibration approach that would include the HVAC system in a second phase. A set of basic information and measurements on the building is made available to three groups, while detailed information and measured data are provided to the fourth one. Starting from base models, calibrations are performed by minimizing the discrepancy with the indoor air temperature measured profile. Two groups adopt manual calibration, based on sensitivity analysis to envelope properties and occupants' behaviour parameters. The other two groups adopt automatic

calibration by means of optimisation algorithms. Materials and methods for each research group are summarised in Table 1. The base and the calibrated models are then compared against each other. Calibrated models are tested on a second free floating period for validation.

Table 1: settings of the research.

Research group	Tool	Measures data set	Calibration approach
PoliTO	EnergyPlus	Basic	Manual
PoliMI	TRNSYS 17	Basic	Manual
UniTOV	IDA ICE 4.8	Basic	Automatic
UniTN	TRNSYS 17	Detailed	Automatic

Table 2: detailed and basic measurement data sets.

Quantity	Detailed set	Basic set
Meteorological data	Every 10 minutes	Every hour
Floor indoor air temperature	For different rooms in Apartment A For the main room for Apartments B,C	Average among apartments A, B and C
Neighbouring floors air temperature	For every apartment in the upper and in the lower floor	Upper floor average Lower floor average
External wall surface temperatures/ heat flow densities	Every 10 minutes	Not provided
Windows opening switch	Every 10 minutes for every window in apartment A	Not provided
Mech. ventilation supply temperature	Every 10 minutes for apartment A	Not provided

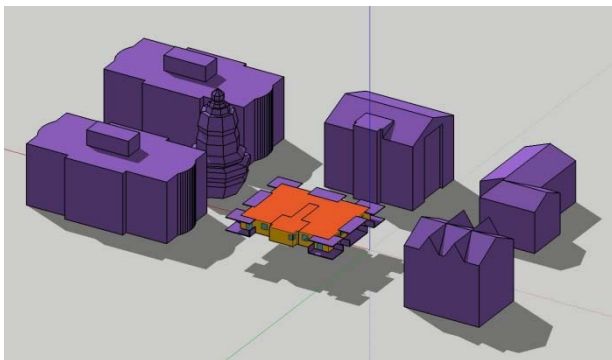


Figure 1: case study geometrical model.

Case study

The case study refers to a 5 storey residential building recently built in the province of Trento (Northern Italy, Alpine region). The building has a platform frame structure, a reinforced concrete stairwell and triple pane low-e windows. The heating system consists in a centralized condensing boiler supplying the radiant floor systems controlled by room thermostats. A mechanical ventilation system with heat recovery provides fresh air to the apartments with a constant airflow rate of 0.5 ACH during the heating period. During free-floating

period, the mechanical ventilation still provides 0.5 ACH but a manual damper at each apartment level allows to by-pass the heat recovery. No active cooling is provided in summertime. The occupants are free to open the windows and modify the thermostat set point.

A weather station close to the monitoring site collects the weather data every 10 minutes (Giovannini et al., 2013). A monitoring system measures the indoor air temperature and the thermal energy delivered daily by the radiant floor system in every apartment. In a few apartments more sensors were installed, allowing to measure surface temperatures and heat flow densities on the external wall, the indoor air temperature in different rooms, the mechanical ventilation air supply temperature and whether the windows are open or not.

For the purpose of this work, an intermediate floor of the building was chosen, where apartments named A, B and C are found. Measured data were grouped into a detailed and a basic data set, as shown in Table 2. The detailed data set was provided to UniTN, while the basic one to the other three research groups (Table 1).

Modelling

The building floor and the surrounding buildings were drawn in OpenStudio (Figure 1) and then the geometry was imported in each energy simulation environment. The research groups provided with the basic data set adopted a simple thermal zoning, modelling the building floor as 2 thermal zones, corresponding to the set of the 3 apartments and to the stairwell (see again Figure 1). In turn, the research group provided with the detailed data set defined 14 thermal zones, namely 5 zones in Apartment A, and 9 zones corresponding to Apartments B and C and the stairwell.

From the yearly meteorological data set, the month of October 2017 was chosen for simulations, considering the first week as the conditioning period for the building inertia and the remaining 3 weeks as the calibration period.

The base case models implemented constructions as described in design documentation (external walls with U -value = $0.12 \text{ W}/(\text{m}^2\cdot\text{K})$, triple-layers Argon filled low-e glazings with U -value = $0.6 \text{ W}/(\text{m}^2\cdot\text{K})$) and standard internal gains schedules for residential units (UNI/TS 11300-1, 2014). A constant mechanical ventilation flow rate equal to 0.5 ACH was assigned. Window rolling-shutters were supposed in use only during night time. Finally the air temperature profiles of the upper and lower floors were assigned as boundary conditions for the thermal zones. While UniTN modelled the internal partitions and used weather data every 10 minutes, the other groups ignored internal partitions and used hourly weather data.

Statistical metrics

The simulated indoor air temperature was compared with the measured one at every time step. The overall agreement between simulation results and measurements on the whole simulation period was evaluated through the Root Mean Squared Error, i.e.:

$$RMSE = \sqrt{\frac{\sum_k (M_k - S_k)^2}{N}} \quad (1)$$

where M_k and S_k represent the measured and simulated temperature at time step k , respectively. The model was considered calibrated if $RMSE \leq \sigma$, where the temperature measurement accuracy σ is equal to 0.5°C . In addition to $RMSE$, correlation plots of the simulated air temperature versus the measured one were drawn and the R^2 value of the linear interpolation was used as a simulation performance indicator.

Manual calibration and sensitivity analysis

PoliTO and PoliMI performed a manual calibration, preceded by a sensitivity analysis to the main building envelope parameters and user behaviour parameters reported in Table 3. The envelope parameters considered were: the thermal conductivity of the insulation layers, the thermal bridges overall correction, the g-value of the glazings and the internal mass. The latter, including the furniture, was modelled in different ways: through a multiplier of the indoor air volume capacity as suggested in (EN ISO 52016-1, 2017) and/or by introducing internal partitions. Regarding the occupants, the following parameters were considered: the internal gains daily profile, the use of rolling-shutters also during the day for solar shading when a minimum solar irradiance on the window is reached, the natural ventilation flow rate resulting from the windows opening. The latter was modelled following two approaches: opening according to a daily schedule or opening when outside air temperature reaches a threshold. In both cases, opening the windows determines given ACH_{NV} .

The parameters were varied one-at-a time and the sensitivity was evaluated by means of the following index s :

$$s = \frac{\Delta O}{\Delta I / I_m} \quad (2)$$

where O and I are the output (indoor air temperature) and the input (parameter) respectively, the subscript m indicates the mean value, and ΔO represents the root mean squared variation of the outputs at every time step, when the input is varied from the base value I_b to the generic value I . It has to be mentioned that in the case of

natural ventilation, I is set equal to the total air changes, namely the sum of ACH_{MV} and ACH_{NV} , so that $I_b = ACH_{MV} = 0.5$. The sensitivity index s is thus dimensional [$^\circ\text{C}$] but the input variation is normalised by the mean value, so that sensitivities to different quantities can be compared.

Following sensitivity analysis, the most influential parameters were combined and adjusted in order to reach the calibration target.

Automatic calibration/basic data set

UniTOV performed an automatic calibration by coupling IDA ICE with the optimization engine GenOpt, through the parametric runs macro. The objective function was identified in the $RMSE$ for the apartments thermal zone, defined in (1). Since automatic calibration allows to easily vary more parameters compared to manual calibration, this potential was exploited. More in detail, the 3 steps of the internal gains schedule were allowed to vary, possibly leading to a profile very different from the base one. Moreover, the possibility that the threshold for shutters activation depends on the window orientation was tested.

Automatic calibration/detailed data set

First of all, UniTN used the detailed monitoring of the external walls to calibrate the thermal properties of the layers, operating at the single-wall level as in (Angelotti et al., 2018). The wall response in terms of inside and outside heat flow densities under imposed surface temperatures (equal to measured profiles in October 2017) was simulated. The wall properties were then optimised in order to reproduce the measured heat flow densities on both sides.

As a second step, the base building floor model was refined, taking into account the additional information on Apartment A derived from the detailed data set (Table 2), namely:

- windows are often open during the day;
- the mechanical ventilation air supply temperature is not equal to outdoor temperature, as if the occupants did not switch on the heat recovery by-pass.

Therefore, in the refined model the windows in

Table 3: parameters of the sensitivity analysis.

	Parameter	Base value	Variation
envelope	Mineral wool/wood fibres thermal conductivity	$\lambda_{mw} = 0.038 \text{ W/(m.K)}$ $\lambda_{wf} = 0.05 \text{ W/(m.K)}$	+ 5% ÷ + 20%
	Thermal bridges	$\Psi_L = 0$	$\Psi_L = 5 \div 15 \text{ W/K}$
	Glazings g-value	$g = 0.52$	$g = 0.34 \div 0.40$
	Internal mass	Air capacity multiplier $ACM = 1$ Partitions surf. $S_{part} = 0$ No furniture	$ACM = 1 \div 10$ $S_{part} = 259 \text{ m}^2 \div 1034 \text{ m}^2$ (to include furniture)
occupants	Internal gains schedule	standard (UNI 11300-1, 2014)	a) reduced by factor 5% ÷ 50% b) modified conserving daily energy gain
	Solar irradiance threshold for shutters use	$G_{min} = 1376 \text{ W/m}^2$	$G_{min} = 200 \div 300 \text{ W/m}^2$
	Natural ventilation flow rate	$ACH_{NV} = 0$	$ACH_{NV} = 0.5 \div 1.5$ a) hourly schedule b) when $T_{ext} > T_{min}$

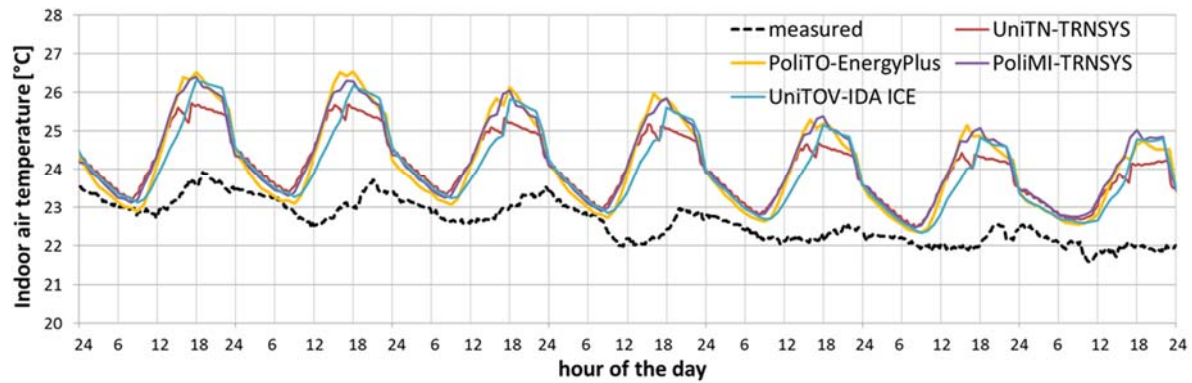


Figure 2: simulated (base models) and measured indoor air temperature (3rd week October 2017)

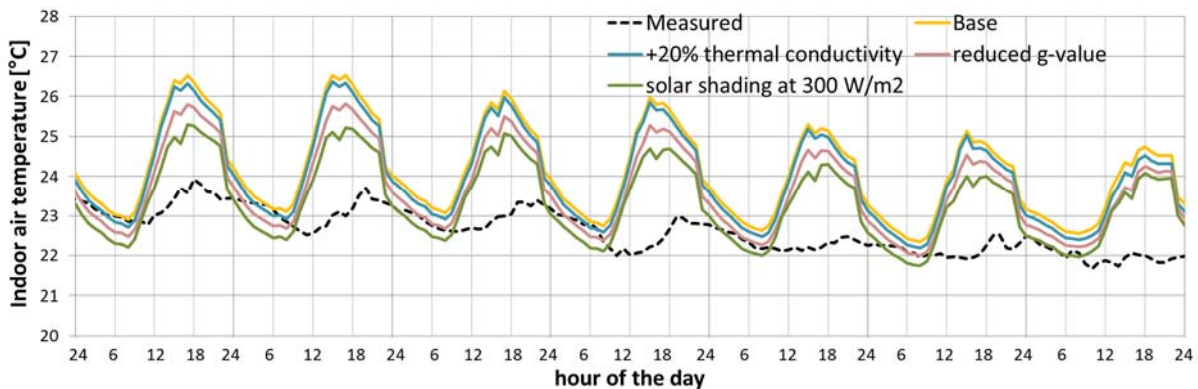


Figure 3: sensitivity analysis – PoliTO-EnergyPlus (3rd week October 2017)

Apartment A are open according to the measured switch signals and the natural ventilation flow rate is calculated depending on the wind pressure and the temperature difference, following the approach by the standard (EN 15242, 2007). As far as the mechanical ventilation in Apartment A is concerned, the measured air supply temperature profile is given as input. Finally the natural ventilation flow rates in Apartments B and C are modelled scaling the corresponding flow rate in Apartment A.

As a third step, automatic calibration on the refined model was carried out. Beside internal gains profiles, threshold irradiance for shutters activation for each apartment and indoor air volume capacitance multiplier, the calibration parameters are the windows opening angle in Apartment A and the natural ventilation flow rates scaling factors for Apartments B and C. The objective function for the automatic calibration was identified in the sum of the *RMSE* of the different thermal zones.

Validation

The calibrated models were tested on a second period. Among the periods of the year when the building is in free floating, August 2018 was selected for validation. Being warmer and more sunny than October, it actually represents a challenge for the calibrated models.

Results

Base models results

The indoor air temperature during the 3rd week of October obtained from the base models simulations is reported in Figure 2 together with the measured trend. The *RMSE* calculated over the calibration period for each base model is reported in Table 4. The outputs from the different simulation tools are generally coherent with each other's. Compared with the measured profile, they all overestimate the indoor air temperature mean value and variation amplitude; moreover, they anticipate the peaks. It is worth comparing the simulation outputs by UniTN and PoliMI, since they are both obtained through TRNSYS. The simulation output by UniTN is generally damped, especially in the warm peaks, with respect to the output obtained by PoliMI. This outcome can be attributed to the inertia of the partition walls that are modelled in the base case by UniTN, while they are not considered in the base case by PoliMI and the other groups.

Table 4: base models performance (October 2017)

Research group	Tool	<i>RMSE</i> [°C]
PoliTO	EnergyPlus	1.81
PoliMI	TRNSYS 17	1.76
UniTOV	IDA ICE 4.8	1.58
UniTN	TRNSYS 17	1.53

Manual calibration results

The sensitivity analysis performed by PoliTO and PoliMI showed a modest influence of the external opaque envelope parameters, namely the thermal conductivity of the insulation layers and the thermal bridges correction. On the contrary reducing the glazing solar heat gain coefficient, introducing external solar shading, reducing/modifying the internal gains profile, adding internal mass and introducing natural ventilation during the day all impact on the simulation output. An example is shown in Figure 3, where the variation in the indoor air temperature profile during the 3rd week of October 2017 for some parametric variations brought to the base model is reported (PoliTO-EnergyPlus simulations). Additionally in Figure 4 the maximum sensitivity index s , calculated according to equation (2), is reported for each kind of variation (PoliMI-TRNSYS simulations). The combination of the most influential variations resulted in several acceptable solutions listed in Table 5, obtained with 2, 3 or 4 variations. It can be noticed that all of them requires the modelling of additional internal mass, either through a lumped capacity approach applied to the air volume or through an explicit simulation of internal partitions.

Automatic calibration/basic data set results

The automatic calibration performed by UniTOV using IDA-ICE resulted in a calibrated model with a very good agreement with measured data, namely $RMSE = 0.27^{\circ}\text{C}$.

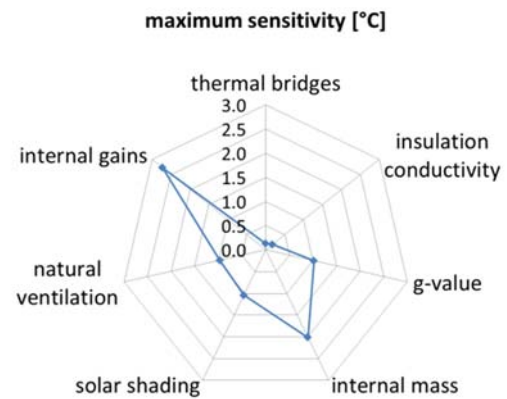


Figure 4: maximum sensitivity of the PoliMI-TRNSYS model to the main parameters

The calibrated parameters are shown in Table 5: the air capacity multiplier is set to 11, a modest thermal bridges correction is applied, a small amount of natural ventilation (0.08 h^{-1}) is added to the base mechanical ventilation rate (0.5 h^{-1}). The internal gains profile is modified with respect to the base one according to a profile named UniTOV and shown in Figure 5 together with those resulting from the calibrations performed by the other groups. Different solar irradiance thresholds for shutters activation are found for different orientation of

Table 5: calibrated models PoliTO, PoliMI and UniTOV

	Model	Internal mass	Thermal bridges correction	Natural ventilation	Internal gains	Solar shading	RMSE [°C]
PoliTO-EnergyPlus	PoliTO 1	ACM = 5 $S_{\text{part}} = 259 \text{ m}^2$	-	$\text{ACH}_{\text{NV}} = 0.5$ 1 p.m. – 10 p.m.	-	$G_{\text{min}} = 300 \text{ W/m}^2$	0.51
	PoliTO 2	ACM = 5 $S_{\text{part}} = 259 \text{ m}^2$	-	$\text{ACH}_{\text{NV}} = 0.5$ 1 p.m. – 10 p.m.	Profile PoliTO	$G_{\text{min}} = 300 \text{ W/m}^2$	0.43
	PoliTO 3	ACM = 8 $S_{\text{part}} = 0$	-	$\text{ACH}_{\text{NV}} = 0.5$ 1 p.m. – 10 p.m.	Profile PoliTO	$G_{\text{min}} = 300 \text{ W/m}^2$	0.44
	PoliTO 4	ACM = 5 $S_{\text{part}} = 259 \text{ m}^2$	-	$\text{ACH}_{\text{NV}} = 0.5$ 11 a.m. – 9 p.m.	Profile PoliTO	$G_{\text{min}} = 300 \text{ W/m}^2$	0.38
PoliMI-TRNSYS	PoliMI 1	ACM = 5 $S_{\text{part}} = 259 \text{ m}^2$	-	-	-	$G_{\text{min}} = 200 \text{ W/m}^2$	0.49
	PoliMI 2	ACM = 3 $S_{\text{part}} = 1034 \text{ m}^2$	-	-	-	$G_{\text{min}} = 200 \text{ W/m}^2$	0.46
	PoliMI 3	ACM = 5 $S_{\text{part}} = 259 \text{ m}^2$	-	$\text{ACH}_{\text{NV}} = 0.5$ 1 p.m. – 10 p.m.	-	$G_{\text{min}} = 300 \text{ W/m}^2$	0.50
	PoliMI 4	ACM = 5 $S_{\text{part}} = 259 \text{ m}^2$	-	$\text{ACH}_{\text{NV}} = 1.5$ if $T_{\text{ext}} > 18^{\circ}\text{C}$	-	$G_{\text{min}} = 200 \text{ W/m}^2$	0.46
	PoliMI 5	ACM = 3 $S_{\text{part}} = 1034 \text{ m}^2$	-	$\text{ACH}_{\text{NV}} = 1.5$ if $T_{\text{ext}} > 16^{\circ}\text{C}$	Base reduced by 25%	-	0.42
	PoliMI 6	ACM = 3 $S_{\text{part}} = 1034 \text{ m}^2$	-	$\text{ACH}_{\text{NV}} = 0.5$ 1 p.m. – 10 p.m.	Base reduced by 25%	-	0.42
UniTOV-IDA ICE	UniTOV	ACM = 11	$\Psi_L = 0.32 \text{ W/K}$	$\text{ACH}_{\text{NV}} = 0.08$	Profile UniTOV	$G_{\text{min}} = 350 \text{ W/m}^2 \text{ N}$ $G_{\text{min}} = 65 \text{ W/m}^2 \text{ E}$ $G_{\text{min}} = 611 \text{ W/m}^2 \text{ S}$ $G_{\text{min}} = 64 \text{ W/m}^2 \text{ W}$	0.27

Table 6: UniTN-TRNSYS calibration of the external wall: base and calibrated properties

Base properties				(Calibrated – base)/ base		
s	ρ	c	λ	$\Delta\rho$	Δc	$\Delta\lambda$
cm	kg/m ³	J/(kg.K)	W/(m.K)	[%]	[%]	[%]
6	160	2100	0,050	-29	-3	1
1,8	550	1221	0,098	-56	7	-2
18	40	1030	0,038	-9	-12	-2
1,8	550	1221	0,098	-56	7	-2
6	50	2100	0,038	-27	1	0
1,5	1200	1100	0,320	-47	-5	0

Table 7: UniTN-TRNSYS calibration of the building model: parameters range and calibrated values

	Range	Calibrated
Solar irradi. shading closed Ap. A	200-1400	200 W m ⁻²
Solar irradi.shading closed Ap. B	200-1400	300 W m ⁻²
Solar irradi. shading closed Ap. C	200-1400	1400 W m ⁻²
Solar irradi. difference shading closed-open Ap. A	0-200	200 W m ⁻²
Solar irradi. difference shading closed-open Ap. B	0-200	200 W m ⁻²
Solar irradi. difference shading closed-open Ap. C	0-200	50 W m ⁻²
Window opening angle Ap. A Zone KS	10-90	10 deg
Window opening angle Ap. A Zone WC	10-90	40 deg
Window opening angle Ap. A Zone LS	10-90	10 deg
Window opening angle Ap. A Zone LM	10-90	10 deg
ACH _{NV} Ap. B/ Ap. A	0-1.5	0,5
ACH _{NV} Ap. C/ Ap. A	0-1.5	0
ACH _{MV}	0.5-0.65	0,55
Stairwell zone infiltration ACH	0.1-0.6	0,3
(T _{supply} -T _{ext}) Ap. B/Ap. A	0.5-1.5	0,5
(T _{supply} -T _{ext}) Ap. C/Ap. A	0.5-1.5	0,5
Time shift internal gains profile compared to base profile	-2,+2	-1.167 h
Morning gain ampl. living area	0.5-1.5	1.1
Afternoon gain ampl. living area	0.5-1.5	1.3
Evening gain ampl. living area	0.5-1.5	0.5
Morning gain ampl. sleeping area	0.5-1.5	0.7
Afternoon gain ampl. sleeping area	0.5-1.5	1.3
Evening gain ampl. sleeping area	0.5-1.5	1.5
Air capacity multiplier	1	2.25

the windows. The minimum irradiances resulting from calibration suggest that shutters are used primarily on the East and West facades.

Automatic calibration/detailed data set results

The calibration of the thermal properties of the external walls (Table 6), obtained from single-wall level analysis, resulted in a negligible modification of the thermal conductivities of the layers, so that the U-value of the wall remains equal to 0.12 W/(m².K). The variation of the materials density appears more significant, although base values already allow classifying the wall as “light” one.

The automatic calibration at the building level resulted in the model described in Table 7. It is worth to notice that in the calibrated model shutters are activated on different thresholds for the 3 apartments. Moreover, in Apartment B natural ventilation flow rates are half the Apartment A flow rates, while in Apartment C the windows are generally closed. The overall performance of the calibrated model, in terms of mean floor air temperature, is $RMSE = 0.46^{\circ}\text{C}$.

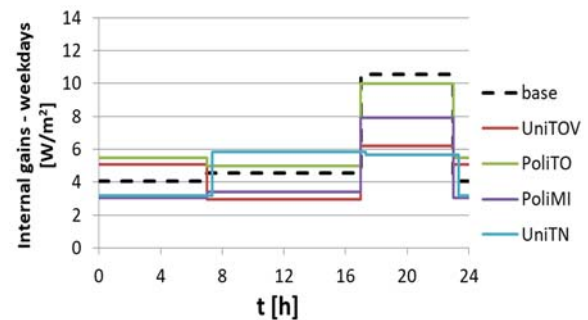


Figure 5: base and calibrated internal gains profiles (weekdays)

Discussion

Starting from similar results of the base models (Figure 2, Table 4), indicating a limited difference in the simulation tools adopted, the research groups came to various calibrated models. The indoor air temperature in the 3rd week of October 2018 simulated by calibrated models obtained by PoliTO (PoliTO 4), PoliMI (PoliMI 5), UniTOV and UniTN is plotted in Figure 6, together with the measured profile. As the corresponding $RMSE$ also demonstrate, it seems that having access to detailed monitoring does not guarantee a better calibration. Indeed, the relatively good performance of the UniTN calibrated model is the result of the combination of a very good performance in predicting the temperature in Apartment A (the one with detailed monitoring) and a less good performance in predicting the air temperature in Apartments B and C. These different performances are shown in (Figure 7) where the simulated temperature is correlated to the measured one for Apartment A ($R^2=0.7135$) and Apartment B ($R^2=0.579$).

This means that monitoring the windows opening is useful, but it should be extended to most of the users in the building to guarantee an excellent quality of the calibration as a whole.

As the very low *RMSE* achieved by the UniTOV-IDA ICE model demonstrates, automatic calibration can be more effective than manual one. However, in this case it predicts the substantial absence of natural ventilation due to window opening (Table 5), while monitoring on

Apartment A clearly indicates that windows are open for large part of the day. On the contrary, manual calibration easily results in several possible solutions with comparable performance. However, testing such solutions on a different period can help discriminating among them. As an example, the performance of the models PoliMI 5 and PoliMI 6 (Table 5), calibrated on October 2017, during the 3rd week of August 2018 is shown in Figure 8, where the simulated indoor

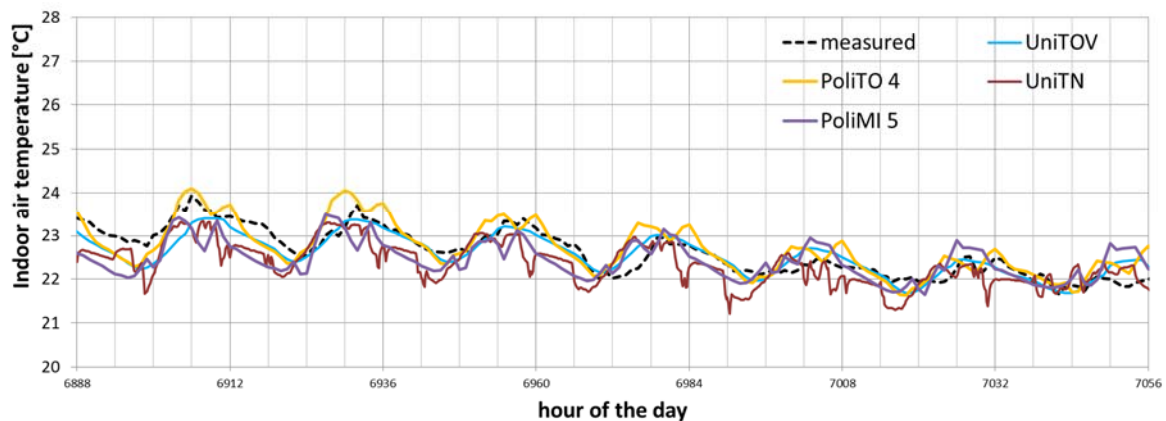


Figure 6: simulated (calibrated models) and measured indoor air temperature (3rd week October 2017)

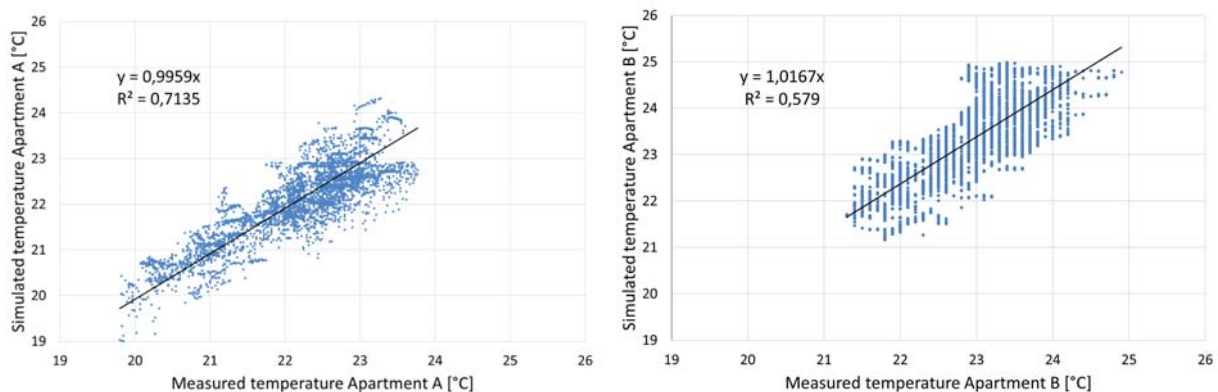


Figure 7: UniTN calibrated model – Apartment A(left) and B(right): simulated vs measured temperature

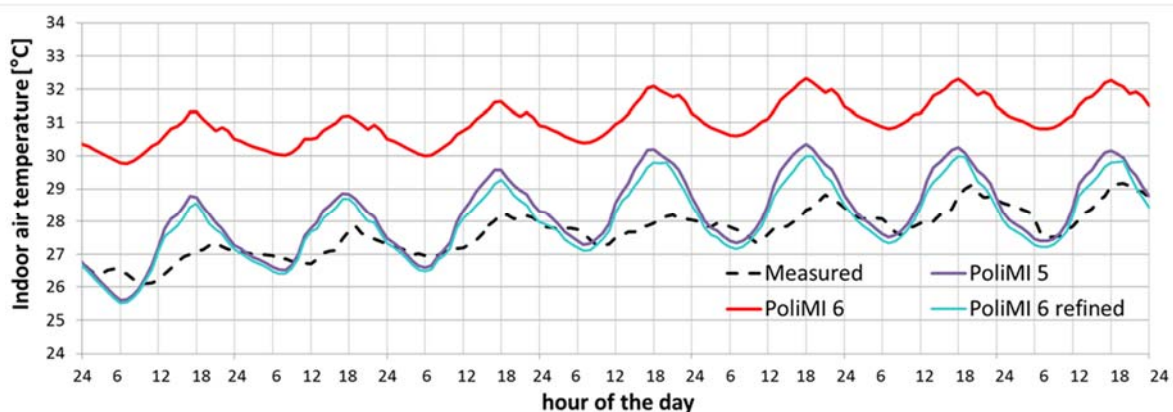


Figure 8: simulated (calibrated models) and measured indoor air temperature (3rd week August 2018)

temperatures are plotted together with the measured indoor temperature. It can be noticed that the model implementing window opening and natural ventilation according to a schedule (PoliMI 6) has a larger discrepancy compared to the one where window opening is regulated by outdoor temperature (PoliMI 5). Therefore, testing the optimal solutions in August led to discard the solutions of the first kind and to refine the solutions of the second kind. The refinement (PoliMI 6 refined) consisted in the definition of a higher threshold of outdoor temperature regulating the window closing.

As far as internal gains profile is concerned, it can be noticed that calibrated profiles by PoliMI, UniTOV and UniTN, although different (Figure 5), all result in a 24-25% reduction on the daily energy gain with respect to the base profile.

Conclusions

A BES model calibration exercise was performed in parallel by different research groups, adopting either manual or automatic calibration and having access to basic or detailed monitoring data.

Manual calibration results in different acceptable combinations of parameters. It was shown that testing such solutions on a different period (validation) can help discriminating among them.

Automatic calibration helps managing the complexity of the parameters involved, identifies a unique and very good performing solution, but in this case such solution is not completely coherent with the evidences regarding user behaviour.

Having access to detailed monitoring data first orientate the development of the building model. For a highly insulated building analysed in free floating conditions, calibrating the opaque envelope properties against monitored data at the single wall level leads to modest adjustments. In turn, monitoring the user behaviour in relation to window opening and using this information lead to more accurate calibration. Therefore, for this kind of buildings, it is more important to invest in monitoring the users' behaviour rather than the envelope thermal response. At the same time users' behaviour is characterised by diversity, so that observations should refer to sufficiently large samples.

In the presence of several acceptable models of an existing building, a possible development of the research will address the question if and to what extent using different calibrated models to design retrofit or management interventions leads to different conclusions.

Acknowledgements

This research has been carried out within the "Renovation of existing buildings in NZEB vision (nearly Zero Energy Buildings)" Project of National Interest (Progetto di Ricerca di Interesse Nazionale -

PRIN) funded by the Italian Ministry of Education, Universities and Research (MIUR).

References

- Angelotti, A., Martire, M., Mazzarella, L., Pasini, M., Baggio, P., Prada, A., Ballarini, I., Corrado, V., De Luca, G., Bosco, F., Cornaro, C. (2018) Building energy simulation for Nearly Zero Energy retrofit design: the model calibration. *Proceedings from 18th EEEIC*. Palermo (Italy), 12-15 June 2018.
- ASHRAE (2002). Guideline 14:2002. Measurement of Energy and Demand Saving.
- Cacabelos, A., Eguia, P., Febrero, L., Granada, E. (2017). Development of a new multi-stage building energy model calibration methodology and validation in a public library, *Energy and Buildings* 146, 182-199.
- Coakley, D., Raftery, P., Keane, M. (2014). A review of methods to match building energy simulation models to measured data, *Renewable and Sustainable Energy Reviews* 37, 123-241.
- EN 15242 (2007). Ventilation for buildings - Calculation methods for the determination of air flow rates in buildings including infiltration.
- EN ISO 52016-1 (2017). Energy performance of buildings - Energy needs for heating and cooling, internal temperatures and sensible and latent heat loads - Part 1: Calculation procedures.
- Fabrizio, E., Monetti, V. (2015). Methodologies and advancements in the calibration of building energy models, *Energies* 8, 2548-2574.
- Gaetani, I., Hoes P.J., Hensen, J.L.M. (2016). Occupant behaviour in building energy simulation: Toward a fit-for-purpose modeling strategy, *Energy and Buildings* 121, 188-204.
- Giovannini, L., Zardi, D., de Franceschi, M. (2013) Characterization of the thermal structure inside an urban canyon: field measurements and validation of a simple model, *Journal of Applied Meteorology and Climatology* 52, 64-81.
- Prada, A., Gasparella, A., Baggio, P. (2019) A robust approach for the calibration of existing buildings models. *Proceedings from BS2019 16th Int. Building Simulation Conference*. Roma (Italy), 2-4 September 2019.
- Yan, D., Hong, T., Dong, B., Mahdavi, A., D'Oca, S., Gaetani, I., Feng, X. (2017). IEA ECB Annex 66: Definition and simulation of occupant behavior in buildings, *Energy and Buildings* 156, 258-270.
- UNI/TS 11300-1 (2014). Energy performance of buildings Part 1: Evaluation of energy need for space heating and cooling.