

Integration of organic electrochemical transistors and immuno-affinity membranes for label-free detection of interleukin-6 in the physiological concentration range through

Original

Integration of organic electrochemical transistors and immuno-affinity membranes for label-free detection of interleukin-6 in the physiological concentration range through antibody-antigen recognition / Gentili, D.; D'Angelo, P.; Militano, F.; Mazzei, R.; Poerio, T.; Brucale, M.; Tarabella, G.; Bonetti, S.; Marasso, S. L.; Cocuzza, M.; Giorno, L.; Iannotta, S.; Cavallini, M.. - In: JOURNAL OF MATERIALS CHEMISTRY. B. - ISSN 2050-7518. - STAMPA. - 6:33(2018), pp. 5400-5406. [10.1039/c8tb01697f]

Availability:

This version is available at: 11583/2753934 since: 2019-09-23T11:09:52Z

Publisher:

Royal Society of Chemistry

Published

DOI:10.1039/c8tb01697f

Terms of use:

openAccess

This article is made available under terms and conditions as specified in the corresponding bibliographic description in the repository

Publisher copyright

(Article begins on next page)

Electronic Supplementary Information

Integration of Organic Electrochemical Transistors and Immuno-Affinity Membranes for Label-Free Detection of Interleukin-6 at the Physiological Concentration Range through Antibody-Antigen Recognition

Denis Gentili,* Pasquale D'Angelo, Francesca Militano, Rosalinda Mazzei, Teresa Poerio, Marco Brucale, Giuseppe Tarabella, Simone Bonetti, Simone L. Marasso, Matteo Cocuzza, Lidietta Giorno, Salvatore Iannotta and Massimiliano Cavallini

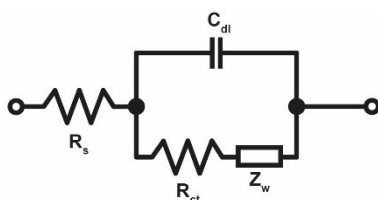


Figure S1. Randles equivalent circuit: dynamic solution resistance (R_s), double layer capacitance measured between the gold electrode and the electrolyte solution (C_{dl}), charge transfer resistance (R_{ct}) and Warburg Element (Z_w).

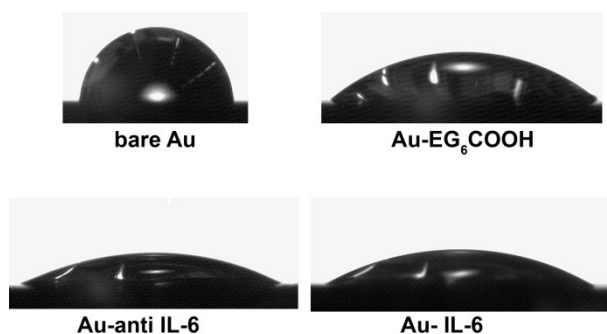


Figure S2. Static water contact angle measurements of gold-coated substrates after each functionalization and incubation steps.

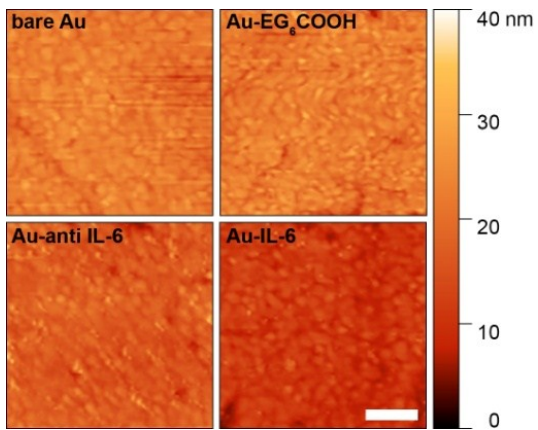


Figure S3. AFM images (scale bar: 200 nm) of a gold-coated surface after each functionalization and incubation step.

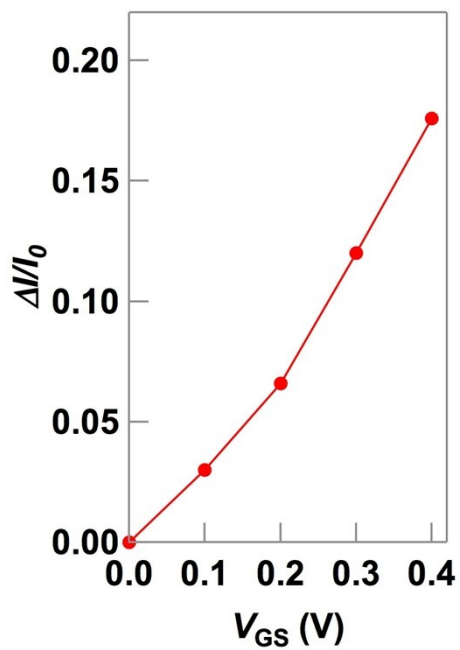


Figure S4. $\Delta I/I_0$ parameter as a function of V_{GS} (V_{DS} at -0.1 V) of OECT working with bare Au gate electrode