

# Development of 3D skin model and 3D skin infection model, as advanced testing tools for the bio-evaluation of antimicrobial biomaterials for wound healing

Ayesha Idrees<sup>1,2,3</sup>, Inge Schmitz<sup>4</sup>, Lennart Marlinghaus<sup>5</sup>, Gianluca Ciardelli<sup>1</sup>, Richard Viebahn<sup>2</sup>, Valeria Chiono<sup>1\*</sup>, Jochen Salber<sup>2,3\*</sup>

<sup>1</sup>Department of Mechanical and Aerospace Engineering (DIMEAS), Politecnico di Torino, Turin, Italy

<sup>2</sup>UMC Knappschafts Krankenhaus Bochum, Clinic of Surgery, Hospital of the RUHR University Bochum, Bochum, Germany

<sup>3</sup>Department of Experimental Surgery, Centre for Clinical Research, RUHR University Bochum, Germany

<sup>4</sup>Institute of Pathology, RUHR University Bochum, Germany

<sup>5</sup>Department of Medical Microbiology, Institute for Hygiene and Microbiology, RUHR University Bochum, Germany

\*Authors sharing last author position.

[valeria.chiono@polito.it](mailto:valeria.chiono@polito.it), [jochen.salber@hotmail.com](mailto:jochen.salber@hotmail.com)

**Introduction:** EU 7th amendment (Dir. 2003/15/EC) of the “Cosmetics Directive” (76/768/EEC) has required the replacement of animal trials with reliable *in vitro* tests for assessing cutaneous resorption since 2009. *In vitro* bio-evaluation would be more accurate using biomimetic 3D testing systems respect to 2D cell cultures. In this work, *in vitro* 3D human skin equivalent (HSE) and wound infection model (c-HSE) were developed and used for testing commercially available Ag-dressings, then compared to 2D cultures.

**Materials and methods:** Initially murine *in vitro* dermal construct (MDC) and human *in vitro* dermal construct (HDC) were generated, and different viability assays were optimized for 3D system [1]. Then, in-house reconstructed human epidermis (RHE) and reconstructed murine epidermis (RME) [2] were developed with the aim to understand the relevance of outcomes obtained from human- and animal-based systems reducing the animal trials. The human skin equivalent (HSE) having both dermal and epidermal compartments was obtained by optimizing 3D cell culture conditions based on serum/animal component-free and fully-defined media to obtain epidermal differentiation mimicking as closely as possible native human skin (NHS). Skin infection model (c-HSE) was created by full-thickness incision and colonization with *S. aureus*.

To validate the 3D systems, Ag<sup>+</sup> and several commercially available Ag containing antimicrobial wound dressings were bio-evaluated using HSE and c-HSE. On the other hand, cell monolayer cultures (based on primary cells and cell lines) were used as 2D cytocompatibility evaluation systems. These materials were also evaluated for their antibacterial activity against several clinically relevant pathogens under different growth culture conditions including simulated wound fluid (SWF). Moreover, additional efforts were addressed to the bio-evaluation of novel drug-free biomaterials intended for infected wound healing applications.

**Results:** Histological results showed characteristic well-differentiated layers of epidermis. Immunohistochemistry

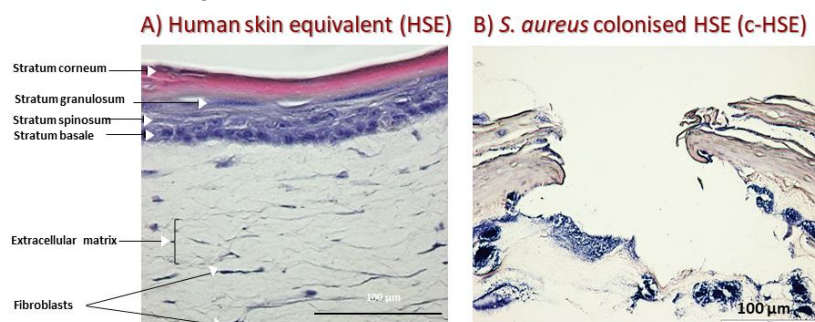


Figure: H & E stained histological image of A) HSE and B) c-HSE.

for proteins' tissue distribution analysis showed Ki-67 & K14 positive basal keratinocytes, K10 positive supra-basal keratinocytes, filaggrin & loricin positive sub-corneal & corneal keratinocytes, and laminin 5 positive basement membrane at dermal-epidermal junction. TEM revealed the ultrastructure of basement membrane demonstrating lamina lucida, lamina densa, regular hemidesmosomes, and anchoring fibres. The epidermal layers showed abundant intracellular keratin filaments, desmosomes, and tight junction between keratinocytes. SEM revealed the interwoven network and architecture of ECM with embedded dermal fibroblasts. The contact angle of  $82.5^\circ \pm 8.9^\circ$  demonstrated the barrier function of HSE with respect to  $90.0^\circ \pm 5.1^\circ$  for NHS. This model represented a fundamental construct with highly resembling features to that of NHS. Histology of c-HSE demonstrated bacterial aggregations and early biofilm formation while TEM revealed interesting features including *S. aureus* induced ECM degradation, fibroblasts/keratinocytes cell lysis, and bacterial internalization by keratinocytes. SEM revealed grape-like bacterial clusters covered within extracellular polymeric substance at wound site in dermis and epidermis. The c-HDC results suggested that co-existence of *S. aureus* and *P. aeruginosa* may be significant for both bacterial colonization and pathogenicity in wounds. The bio-evaluation outcomes were different in 2D monolayer vs. 3D HSE based cell culture systems, and conventionally used microbial methods vs. advanced c-HSE system.

**Conclusions:** With an increasing need for reliable *in vitro* testing systems, we were successfully able to establish closely mimicking and verify our advanced 3D models, to serve as a risk assessment platform for cytocompatibility and antibacterial properties.

## References:

1. Idrees, A., et al., *Validation of in vitro assays in three-dimensional human dermal constructs*. The International journal of artificial organs, 2018; p. 0391398818775519.
2. Segrelles, C., et al., *Establishment of a murine epidermal cell line suitable for in vitro and in vivo skin modelling*. BMC dermatology, 2011. 11(1): p. 9.