

Influence of the long-range ordering of gold-coated Si nanowires on SERS

Original

Influence of the long-range ordering of gold-coated Si nanowires on SERS / Cara, Eleonora; Luisa, Mandrile; Federico Ferrarese Lupi, ; Giovannozzi, ANDREA MARIO; Dialameh, Masoud; Portesi, Chiara; Katia, Sparnacci; Natascia De Leo, ; Rossi, Andrea Mario; Boarino, Luca. - In: OPEN ACCESS SCIENTIFIC REPORTS. - ISSN 2332-2675. - 8:(2018). [10.1038/s41598-018-29641-x]

Availability:

This version is available at: 11583/2712581 since: 2018-09-11T09:18:32Z

Publisher:

Nature Publishing Group

Published

DOI:10.1038/s41598-018-29641-x

Terms of use:

This article is made available under terms and conditions as specified in the corresponding bibliographic description in the repository

Publisher copyright

(Article begins on next page)

SCIENTIFIC REPORTS

OPEN

Influence of the long-range ordering of gold-coated Si nanowires on SERS

Eleonora Cara^{1,2}, Luisa Mandrile³, Federico Ferrarese Lupi¹, Andrea Mario Giovannozzi³, Masoud Dialameh^{1,2,4}, Chiara Portesi³, Katia Sparnacci⁵, Natascia De Leo¹, Andrea Mario Rossi³ & Luca Boarino¹

Received: 23 January 2018

Accepted: 16 May 2018

Published online: 27 July 2018

Controlling the location and the distribution of hot spots is a crucial aspect in the fabrication of surface-enhanced Raman spectroscopy (SERS) substrates for bio-analytical applications. The choice of a suitable method to tailor the dimensions and the position of plasmonic nanostructures becomes fundamental to provide SERS substrates with significant signal enhancement, homogeneity and reproducibility. In the present work, we studied the influence of the long-range ordering of different flexible gold-coated Si nanowires arrays on the SERS activity. The substrates are made by nanosphere lithography and metal-assisted chemical etching. The degree of order is quantitatively evaluated through the correlation length (ξ) as a function of the nanosphere spin-coating speed. Our findings showed a linear increase of the SERS signal for increasing values of ξ , coherently with a more ordered and dense distribution of hot spots on the surface. The substrate with the largest ξ of 1100 nm showed an enhancement factor of $2.6 \cdot 10^3$ and remarkable homogeneity over square-millimetres area. The variability of the signal across the substrate was also investigated by means of a 2D chemical imaging approach and a standard methodology for its practical calculation is proposed for a coherent comparison among the data reported in literature.

Surface-enhanced Raman spectroscopy (SERS) is a powerful vibrational spectroscopic technique for chemical and biological sensing; it can be employed for molecular identification and trace analysis due to its high specificity and sensitivity^{1,2}. The name itself emphasises the cornerstone of this technique: the amplification of Raman fingerprints of molecules interacting with noble metal nanostructures. While the enhancement is traditionally attributed to two factors, i.e. the electromagnetic and the chemical one, the first is widely accepted to give the largest contribution. Indeed, when a probe molecule is in close proximity to the surface, it profits from large local field enhancements that occur when localised surface plasmon resonances (LSPR) are excited^{2,3}. In this surface-sensitive technique, the morphology of metallic structures plays a fundamental role in supporting the strong plasmonic enhancement. It determines the presence of localised regions called hot spots, found in between plasmonic objects with features size and spacing at the nanoscale, that are characterised by extremely large amplification of the electromagnetic near field⁴. The hot spots account for the largest enhancement of the Raman signal across the substrate and are responsible for a considerable part of the average enhancement factor (EF). There is a strong discrepancy between the enhancement of the signal from the molecules in these regions and in other locations characterised by a weaker near field intensity⁵. Substrates owning large EF often show poor uniformity and reproducibility of the measurement and inconsistent sensitivity, while substrates with significant uniformity show limited enhancement². It is therefore clear that finding a fair compromise between EF and substrate uniformity is the key element for the realisation of an excellent SERS substrate.

Most of the research activity found in literature concerning the development of novel SERS substrates is mainly focused on the control of the location of hot spots with high density and uniform distribution. The purpose of these studies is indeed to guarantee favourable chemical detection level, towards single molecule

¹Nanoscience and Materials Division, Istituto Nazionale di Ricerca Metrologica, Strada delle Cacce 91, 10135, Torino, Italy. ²Politecnico di Torino, Corso Duca degli Abruzzi 24, 10129, Torino, Italy. ³Quality of Life Division, Istituto Nazionale di Ricerca Metrologica, Strada delle Cacce 91, 10135, Torino, Italy. ⁴Instituut voor Kern-en Stralingsfysica, KU Leuven, Celestijnenlaan 200D, 3001, Leuven, Belgium. ⁵Dipartimento di Scienze e Innovazione Tecnologica, Università del Piemonte Orientale Avogadro, INSTM, UdR Alessandria, Viale T. Michel 11, Alessandria, Italy. Correspondence and requests for materials should be addressed to E.C. (email: e.cara@inrim.it)

detection^{6,7}, along with low variability throughout the surface^{8–10}. In the last few years, flexible gold-coated nanowires (NWs) have been successfully proposed as innovative SERS substrates. The flexibility has been highlighted as an important parameter because it allows the nanowires to lean against each other and trap the molecules in the hot spots at the tip-to-tip site generating a strong enhancement^{11,12}. Besides conventional lithographic techniques, such as electron beam lithography or focused ion beam patterning^{13–15}, several advanced techniques have been investigated in order to obtain gold-coated NWs including nanoimprint lithography¹², self-assembly (SA) of metallic nanoparticles¹⁶, diblock copolymers¹⁷ and nanospheres lithography (NSL). Among them, one of the most promising techniques for the fabrication of high aspect-ratio NWs is given by the combination of NSL and the metal-assisted chemical etching (MACE)¹⁸.

NSL is based on the self-assembly (SA) process of spherical colloids leading to the formation of single- or double-layered crystals exhibiting hexagonally close-packed (HCP) symmetry. Thanks to this capability, NSL represents a promising manufacturing tool for the cheap fabrication of regular arrays of planar^{19,20} or three-dimensional nanostructures²¹, including metallic nanotriangles²², nanopillars^{23,24}, nanomeshes²⁵ or more complex configurations such as the Moiré crystals²⁶. There are two main reasons that make the HCP symmetry obtained by NSL particularly suitable to meet the requirements of high EF and surface uniformity of SERS substrates. First of all, according to Kepler's conjecture, the maximum density of nanospheres (NSs) with the same diameter is achievable in HCP configuration. As already reported¹¹, the density of plasmonic structures strongly affects the SERS activity of the substrate since, by increasing it, an increment in the number of hot spots is ultimately produced. In addition, the periodicity of HCP-ordered nanostructures leads to a uniform distribution of hot spots over the sample.

Nevertheless, the maximum extent of the HCP configuration is limited by the appearance of defects during the SA process. Typically the defects consist of groups of NS with 5–7 close neighbours, whose presence causes the appearance of grains with different size and orientation. As direct consequence, the presence of defects produces a decrease in the number of nanostructures per unit area and, correspondingly, of hot spots. In order to preserve both homogeneity and density of the nanostructures, it is therefore mandatory to increase the average grain size of the NSs and to obtain a SA monolayer, avoiding the formation of multiple layers on the substrate. These two requirements are mainly influenced by the peculiar method for the deposition of the NSs. To fulfil this task, several deposition techniques have been explored so far, including floating²⁷, micropropulsive injection²⁸, spin coating²⁹ or Roll-to-Roll Langmuir-Blodgett³⁰. Among all these possible techniques, spin coating is one of the most convenient because of its applicability to wafer-scale processes and simple utilisation. Despite the number of spin coating protocols proposed to increase the monolayer coverage area and to reduce defects in the six-fold coordination of NSs^{31,32}, not much attention has been given to the quantitative analysis of NSs effective long-range ordering. Moreover, the current understanding of the effect of the degree of order of the nanostructures on the performances of SERS substrates is still incomplete and not univocal.

In the present paper we describe a systematic study aimed at understanding the connection between the degree of order achieved in gold-coated nanowires fabricated by MACE and the intensity of the SERS signal. The method that we identified to quantify the long-range ordering is the calculation of the correlation length ξ ³³. This method takes into account both the presence of defects in the HCP configuration and the grain size. The variation of the long-range ordering is achieved by influencing the evaporation rate of the aqueous solution in which the NSs are dispersed, ultimately responsible for the SA mechanism³⁴. To this goal, samples with different spin coating velocity have been prepared and the corresponding ξ have been measured. The most representative samples were then used to produce gold-coated NWs samples on which we performed SERS measurements over square millimetres areas. The knowledge deriving from this study will serve for the fabrication of substrates with controlled and uniformly distributed hot spots showing advantageous EF with low variability and wide range of applications.

Results and Discussion

Order maximisation. The SA mechanism of NSs during spin coating is quite complex. The process is influenced by several factors, including the dispersion properties of the colloidal solution (i.e. weight fraction, solvent volatility and viscosity)²⁹ as well as the dynamic conditions during spin coating³². The dynamic conditions are given by the rotational speed (ω) and the acceleration (α) adopted during the spin coating process. The modification of these parameters has a direct impact on the evaporation rate of the solvent in which the NSs are dispersed, on the centrifugal forces and the surface tension among the nanoparticles³⁴ and ultimately on the efficiency of the SA process.

In order to understand the relation between rotational speed and ξ , we prepared a set of samples in which we varied ω between 1000 rpm and 3500 rpm. We simultaneously varied α to maintain the ramp time constant to 3.05 s. For all the samples at different ω , we analysed the SEM micrographs (Fig. 1a–f), useful to evaluate the topographical distribution of NSs and to extract the values of ξ . By setting a spinning speed of 1000 rpm (Fig. 1a) we observed the formation of double layers of NSs, it is worth to notice that the HCP ordering of the second layer is often substituted by square close-packing, in this case it is not possible to perform any further lithographic process, thus such deposition parameter will be discarded in the subsequent experiments. By increasing ω , the layer of NSs becomes more compact and the formation of a monolayer is reproduced in the range between $1250 \leq \omega \leq 2000$ rpm (Fig. 1b–d). On the other hand, we observed the formation of an unpacked layer in all the samples processed at $\omega \geq 2500$ rpm, where large portions of the surface are not covered by the NSs, as reported in Fig. 1e,f. From a practical point of view, the speeds between 1250 rpm and 2000 rpm are adequate to perform a subsequent ordered pattern-transfer process.

The quantitative analysis of the SA of NSs layers was achieved by image processing based on Delaunay triangulation of the SEM micrographs of the monolayer. We extracted the colour maps (Fig. 1g–i) representing the orientation of the grains and associate a ξ value to each spinning speed. This procedure highlighted the best

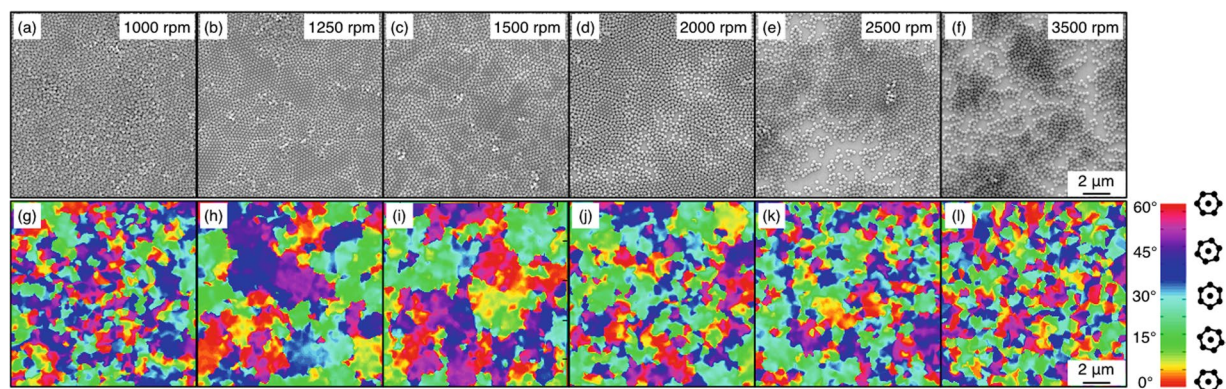


Figure 1. (a–f) SEM micrographs of the monolayer of polystyrene (PS) NSs on flat substrates achieved by spin coating at different speeds ranging from 1000 rpm to 3500 rpm. (g–l) The corresponding colour maps are shown under each SEM image.

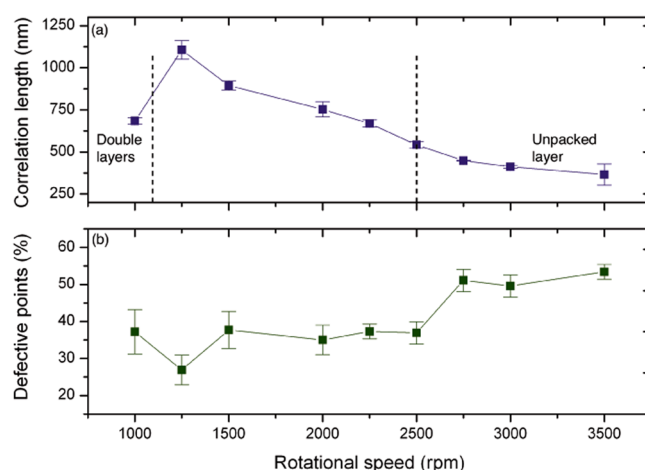


Figure 2. (a) The graph reports the monotonic decreasing trend of ξ at different rotational speed values. The maximum of ξ is found at 1250 rpm. (b) The graph shows the number of defects in the six-fold coordination of NSs in a monolayer on the substrate: the scatter plot refers to the sum of less and more the six nearest neighbours to each particle.

deposition parameters to maximise the long-range ordering of the NSs. Figure 2a displays the behaviour of ξ calculated by the colour maps as a function of the rotational speed. For values in the range $1250 \leq \omega \leq 3500$ rpm, the obtained curve presents a monotonic decreasing trend with increasing spinning speed. For $\omega = 1250$ rpm ξ reaches its maximum value 1084 nm and it drops to 339 nm for $\omega = 3500$ rpm. The error bars are calculated as the standard deviation among ξ values extracted from different images for each substrate. The decrease of ξ to 1000 rpm can be associated to the presence of a second layer of NSs, as evident from Fig. 1a.

Every break in the periodicity of the matrix of NSs, due to the formation of domains, introduces a defective point in the triangulation. We counted the number of defects in the HCP configuration and we evaluated their total percentage. The graph in Fig. 2b marks that the percentage of defects in the monolayer follows a complementary trend as a function of ω with respect to ξ . For $\omega = 3500$ rpm the number of defects reaches 55%; for smaller values of ω it decreases and presents a minimum value at the speed corresponding to the largest ξ . The value of ξ constitutes an indication of the ordering process and it can be considered representative of the whole sample. The effect of various dynamic conditions of spin coating on the ordering of NSs can be better understood through the comparison to a different SA system, such as the diblock copolymers (DBC). The ordering of DBC is influenced by the thermodynamic conditions during the thermal annealing process, i.e. time of annealing, temperature, heating and cooling ramp^{35,36}. It has been observed that raising the temperature during the annealing process and tuning other parameters leads to a process of reorganisation of adjacent domains with the annihilation of defects³⁷ to form larger and larger defect-free areas. Analogously, the effect of the rotational speed and acceleration during spin coating to which the NSs are subjected can be isolated by our analysis. By matching the graphs reported in Fig. 2, we are able to point out that a slow spin coating deposition contributes to trigger the evaporation of the solvent at a proper rate to activate the surface tension among NSs, resulting in the most correlated monolayer in our experimental conditions. On the contrary, at higher speeds the centrifugal force prevails on other physical interactions, spreading the nanoparticles on the substrate in random positions. The optimal dynamic conditions

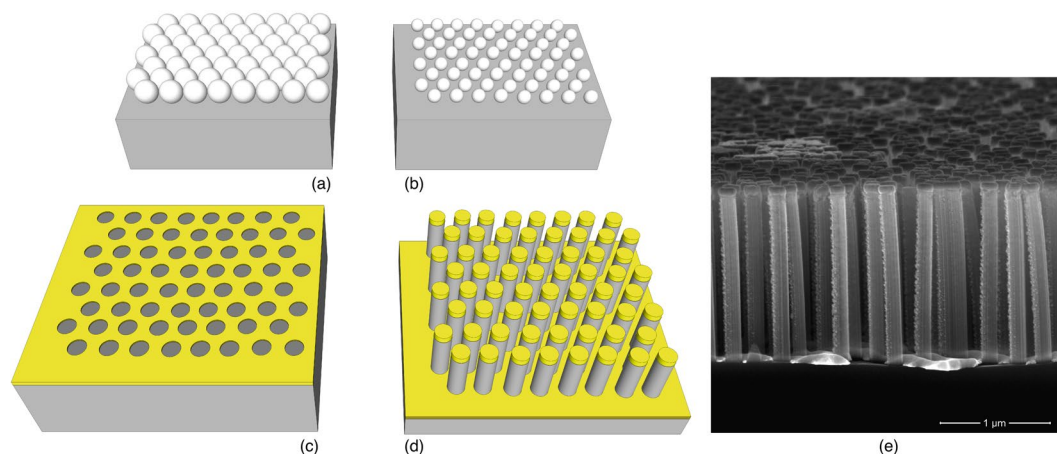


Figure 3. Scheme reporting each step of fabrication. (a) Deposition of PS NSs on the silicon wafer by spin coating at different rotational speed. (b) Reduction of NSs diameter by argon plasma. (c) Deposition of 20 nm of Au and lift-off of the NSs to obtain the pattern on the gold layer. (d) Fabrication of the nanowires by MACE and deposition of 100 nm. (e) SEM image showing the cross section of the definitive substrate prepared for SERS analysis, constituted of standing and flexible gold-coated silicon NWs.

are dependent on the diameter of the NSs; we used nanoparticles with 250 nm in diameter, while the use of bigger NSs is often described in literature resulting in large domains³¹. Despite the significant interest for large area NSL and the use of ξ in DBC ordering estimate, the degree of order of SA NSs arrays have been evaluated only qualitatively rather than quantitatively through the correlation length, making it difficult to compare these results with previous works.

SERS analysis on samples with different correlation length. Having determined the relation between the deposition parameters and ξ , we inspected the influence of degree of order on the activity of the SERS substrate. For the purpose of this test, we selected four samples with diverse values of ξ and in which the first step of deposition of the nanospheres was carried out by varying the spinning speeds. From this point on we will refer to these substrates as NW1 ($\xi = 1084$ nm and $\omega = 1250$ rpm), NW2 ($\xi = 861$ nm and $\omega = 1500$ rpm), NW3 ($\xi = 757$ nm and $\omega = 2000$ rpm) and NW4 ($\xi = 339$ nm and $\omega = 3500$ rpm). We completed the fabrication by means of NSs reduction by plasma etching and MACE to obtain a two-dimensional array of gold-coated NWs; Fig. 3 reports the fabrication steps and the SEM image of the resulting substrate. SEM images showing the substrates morphology after MACE are reported in Supplementary Fig. S1.

For this experiment we used 7-mercapto-4-methylcoumarin (MMC) as probe molecule, because a strong covalent bond is formed between the sulfhydryl functional group (R-SH) and gold on the substrate. Normal Raman spectrum of MMC in solid state is shown in Fig. 4a. The major vibrational peaks, exhibited by the typical Raman fingerprint of pure MMC, are due to the stretching mode of the -C-O- bond at 1169 cm^{-1} , to the conjugated -C=C- stretching mode at 1593 cm^{-1} , and to the -C-C- stretching and in-plane deformation of -C-H_(ring) at 1543 cm^{-1} . The band assignments to the other peaks, listed in Table 1, were obtained by a combination of a computational procedure with vibrational information from refs^{38,39}.

After the incubation of the SERS substrates with MMC and setting the most efficient configuration, corresponding to leaning nanowires, micro-Raman mapping was performed on the four chosen samples within an area of 0.5 mm^2 using a step size of $8\text{ }\mu\text{m}$; the measurement was repeated eight times over each sample in a total area of 4 mm^2 . The spectra displayed in Fig. 4b–e represent the mean spectra of eight areas of analysis of 0.5 mm^2 . The resulting spectra show the features of MMC consistently with its conventional Raman spectrum. The major characteristic peaks cited above are clearly visible in their SERS spectral counterparts. However, some changes occurred in the relative intensities and Raman shift of some characteristic peaks of the MMC. In particular a significant decrease of the intensity was observed in the SERS spectra for the peaks at 438 cm^{-1} , 1169 cm^{-1} and 1544 cm^{-1} shifted to 443 cm^{-1} , 1171 cm^{-1} and 1539 cm^{-1} , respectively. This is quite typical in SERS and it is mostly due to the interactions of the analyte with the surfaces of gold nanostructures, in particular to the orientation of analyte molecules on the substrate and their specific functional groups bound to the substrate⁴⁰.

The vibrational peak at 1593 cm^{-1} was used to compare the enhancement given by different substrates. We plotted the values of the intensities of the characteristic peak for the four substrates against the correlation length ξ of the original monolayer of NSs. As evident from Fig. 5a, the enhancing capability of our substrates is improved by the ordered nanowires; the intensity is enhanced up to 5300 counts/s in the substrate NW1 with the largest correlation length and it progressively falls for decreasing order reaching below half of this value for substrate NW4. The error bars report the relative standard deviation of the eight repeated measurements. The presented trend can be motivated by the increase in the NWs density and consequently of the hot spots in the most ordered substrate, coherently with the quality of the HCP configuration. However, the density alone is not enough to explain this result. The morphology of the hot spots has been investigated in the area with largest enhancement by matching the SERS maps to the SEM analysis. The images in Fig. 5b–e show the arrangement of the nanowires in the different substrates after the probe molecule deposition. In agreement with ref.⁴¹, the formation of bundles of two to

Raman shift (cm^{-1})	Assignment
438	Skeletal vibration
570	Ring vibration
685	Skeletal vibration
1057	Characteristic ring vibration
1102	Characteristic ring vibration
1169	-C-O- str
1318	-C-O- str.
1366	Conjugated -C=C- str. asym
1384	-C-H ₃ def.
1544	-C-C- str. and -C-H _(ring) in-plane deformation
1593	Conjugated -C=C- str. sym

Table 1. Band assignments to the Raman fingerprint of the MMC shown in Fig. 4a.

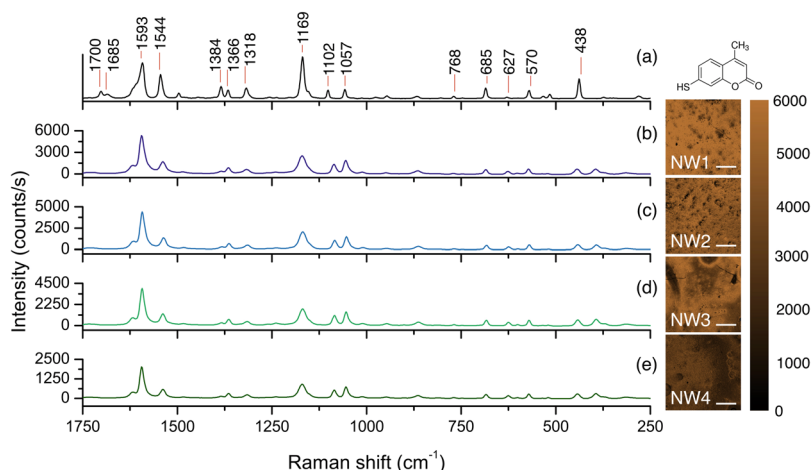


Figure 4. (a) Normal Raman spectrum of the probe molecule 7-mercapto-4-methylcoumarin (MMC). The Raman shifts are indicated above the main peaks in the spectrum and the corresponding assignments are reported in Table 1. The average SERS spectra of MMC acquired on the substrates (b) NW1, (c) NW2, (d) NW3 and (e) NW4 are shown. The chemical maps at 1593 cm^{-1} are reported for each tested substrate (the scale bars correspond to 0.5 mm).

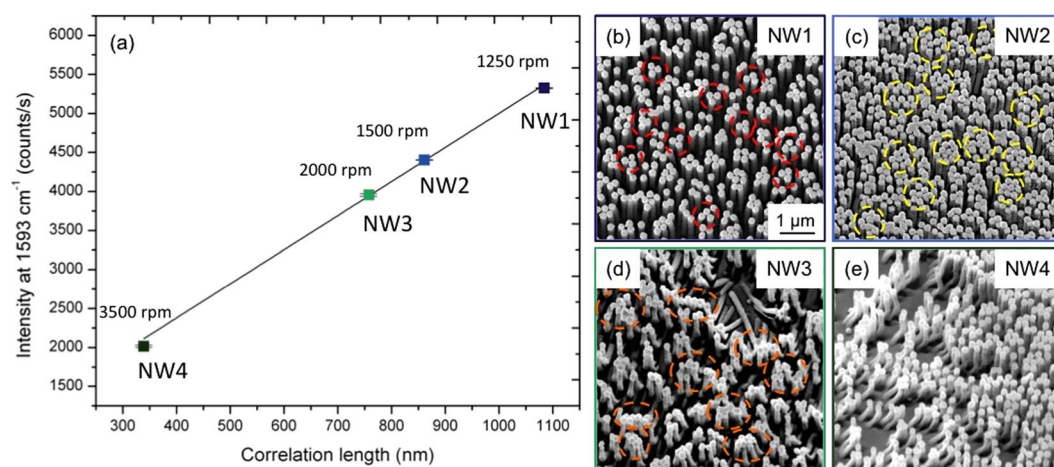


Figure 5. (a) Scatter plot of the average intensity of the SERS signal at 1593 cm^{-1} from the four characterised substrates as a function of the correlation length ξ of the nanostructures. (b–e) SEM micrographs representing the disposition of the nanowires after the probe molecule deposition.

five nanowires produces a greater enhancement of the electromagnetic field in proximity to the hot spot and this configuration is prevalent in the substrate NW1. The NWs bending configuration in substrates NW2 and NW3 is dominated by the formation of larger and irregular bundles leading to a lower enhancement of the SERS intensity. The bending configuration of the NWs is strongly conditioned by the degree of order on the substrate. A further evidence of the relevance of the degree of order ξ is given by the graph in Supplementary Fig. S2. The percentage reduction of the SERS signal, ξ and the NWs density are plotted for each sample and a strong agreement between the data sets for the SERS signal and ξ is evident. Thus the correlation length can be identified as a substantial and easily-measured parameter influencing both the density and the NWs bending arrangement playing a key role in the SERS signal enhancement.

The enhancement factor (EF) was calculated for the most ordered and efficient substrate NW1 according to the method proposed in refs^{5,11,42}. Briefly, using the MMC mode at 1593 cm^{-1} , we calculated the SERS EF of the gold-coated silicon NWs substrate at the excitation wavelength of 780 nm by applying the Eq. 1, where I_{SERS} and I_{Ref} are the intensities of the vibrational peak in SERS and normal Raman (NR) measurements, respectively, while N_{Ref} and N_{SERS} are the number of probe molecules in NR and SERS measurements.

$$EF = \frac{I_{\text{SERS}} N_{\text{Ref}}}{I_{\text{Ref}} N_{\text{SERS}}} \quad (1)$$

Since no Raman signal of the MMC was collected on a gold flat substrate (data not shown) due to the low sensitivity of the normal Raman in the detection of an organic monolayer, to establish the value for I_{Ref} , a 0.01 M ethanol solution of MMC was measured. A detailed description on the method and the calculation of the EF is reported in the Supplementary Information for a more comprehensive clarification. An enhancement factor of $1.6 \cdot 10^6$ was obtained. This value is in the same order of magnitude of the one reported in ref.¹¹ on silver coated silicon nanopillars substrate.

The uniformity of SERS response over an active substrate is a crucial aspect in view of real application; in order to evaluate it we took into account the variability of the signal across the substrate through the relative standard deviation (RSD). The RSD is widely adopted in the SERS community to assess the spatial homogeneity of a substrate. Lower RSD values show remarkable homogeneity^{43,44} and values as low as 3% have been recently reported⁴⁵ pushing the homogeneity to outstanding levels. Even though these figures are quite appealing for the application to analytical chemistry, it is worth considering that a detailed comparison is hindered by the fact that the practical calculation does not result from a standard protocol and every group reports its own methodology. Sometimes the RSD is calculated by considering the mean among tens to thousands punctual spectra^{7,46}, while in other cases it is obtained from multiple scanning areas within a larger area on the substrate^{10,47}. In some papers the scanning area onto which the analysis has been carried out is unclear^{48,49} leading to ambiguity in the results. For the purpose of defining the SERS substrates homogeneity for analytical and bioanalytical applications over large area, we suggest to extend the analysis to greater portions of the substrate and declare the analysed area unequivocally.

One interesting parameter to be considered is the intra-map homogeneity, which is well described by the RSD calculated on all the spectra composing the Raman map. In other words it represents the variability from pixel to pixel within one single map. As long as the scanned area is enlarged, the response variability of different sites increases, leading to a higher RSD value.

However, satisfactory repeatability of the measurements can be obtained by increasing the spot-size of analysis, in this way local differences are averaged. In punctual confocal Raman, the spot size is constant and it depends on the section of the focalised laser on the investigated surface ($2.7\text{ }\mu\text{m}$ for $780\text{ }\mu\text{m}$ laser and $10\times$ objective), however a spot-size enlargement can be practically obtained collecting spectra on a wider area and averaging all of them. In this way, the point-to-point intensity differences due to local defects can be overcome. The resulting mean spectrum is representative for the whole mapped area. In this concern, a relevant information is to define the minimum area that guarantees adequate repeatability. The RSD of repeated measurement of equal areas on the same SERS substrate, i.e. the inter-maps RSD, is considered to evaluate this. A similar approach is used by Novara *et al.*⁵⁰ and Fu *et al.*¹⁰. For this scope, the calculation of the RSDs was performed by elaborating the SERS spectra acquired over progressively increasing areas from $150 \times 150\text{ }\mu\text{m}^2$ to $2000 \times 2000\text{ }\mu\text{m}^2$; the chemical map, shown in Fig. 6, is built over the maximum area of analysis around the band at 1593 cm^{-1} . For each map dimension, four different regions of the substrate were scanned; the number of spectra included in the analysis is reported as well as the intra-map and inter-maps RSDs. The results and details of this analysis are specified in Table 2.

We found that the value of the intra-map RSD is 12.1% over the smallest scanning area and we registered a growth up to 20% for the maximum area of investigation. It is commonly accepted that RSD values around 20% indicate a fair grade of homogeneity in SERS detection^{47,48,51}. On the other hand, the particularly interesting aspect is that the values of the inter-maps RSD decrease when the scanning area is enlarged. The inter-maps RSD remains around 13% for small areas, while it reaches values lower than 10% when the analysis is carried out over $500 \times 500\text{ }\mu\text{m}^2$. Our result of about 13% for the intra-map and inter-maps RSD over $150 \times 150\text{ }\mu\text{m}^2$ revealed an appreciable homogeneity level of the SERS substrate and the repeatability expressed by the inter-maps RSD values is a remarkable result. Moreover, our result constitutes an encouraging step forward in comparison to the homogeneity levels of 20% for substrates with leaning nanowires as declared by Lin *et al.*⁴⁵ over a scanning area of $100\text{ }\mu\text{m}^2$.

In conclusion the application of SERS substrates to analytical chemistry requires the definition of a tailored and controlled fabrication protocol to ensure desirable enhancement together with homogeneity and reproducibility. The use of NSL and MACE for the fabrication of HCP-ordered matrix of flexible nanowires gave encouraging results. Matching the fabrication with a quantitative analysis offered an important understanding of the ordering process in NSL and the possibility to maximise ξ of the nanostructures up to 1100 nm . The increase of the correlation length led to growing enhancement, coherently with an ordered and dense distribution of

Scanned area (μm^2)	Number of spectra	Intra-map RSD (%)	Inter-maps RSD (%)
150×150	9	12.1	12.8
300×300	36	16.4	13.6
450×450	81	16.2	10.7
600×600	144	17.4	8.0
750×750	225	18.1	7.3
900×900	324	17.9	6.8
1000×1000	400	18.1	6.6
2000×2000	1600	20	—

Table 2. Study of the substrate homogeneity through the relative standard deviation. The intra-map RSD is the RSD calculated upon all the spectra composing one Raman map, the reported values are the mean of 4 determinations. The inter-maps RSD is the RSD calculated upon the four intensity averages for each map.

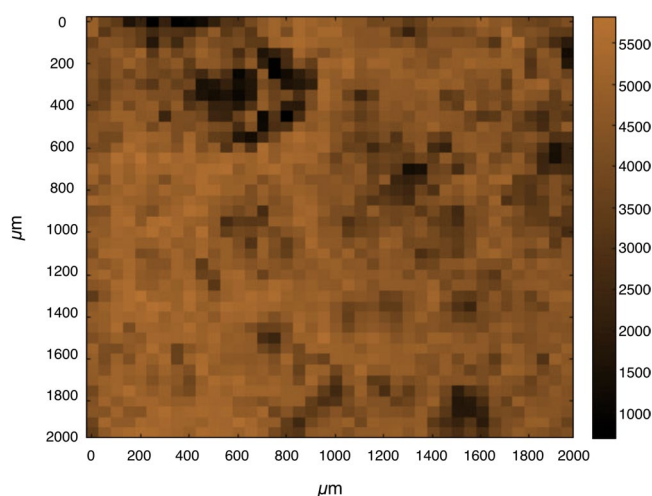


Figure 6. The chemical map at 1593 cm^{-1} , acquired on the most ordered substrate NW1 with a step size of $50\text{ }\mu\text{m}$ on large area of $2000 \times 2000\text{ }\mu\text{m}^2$, was used for the evaluation of surface homogeneity.

hot spots, and to remarkable homogeneity over square-millimetres area, inter-maps RSD of 8% was calculated on $600 \times 600\text{ }\mu\text{m}^2$. To broadening the field of applicability of this substrate, our future effort will be focused on upgrading the fabrication process to prevent the formation of grain boundaries and other irregularities that might weaken the homogeneity of the substrate over large areas. In particular, an additional topographical patterning will be developed on the silicon wafer to direct the self-assembly of NSs.

Methods

Materials and chemicals. Polystyrene NSs were synthesised by emulsion polymerisation (see ref.¹⁸ for details) with diameter equal to $(250 \pm 4)\text{ nm}$. Silicon wafers were purchased by SunEDISON/MEMC, silicon was doped with phosphorus, n+ type with resistivity $27\text{--}47\text{ }\Omega\text{ cm}$ and crystallographic orientation $\langle 100 \rangle$. Substrate functionalisation was obtained using piranha solution (H_2SO_4 (96%) and H_2O_2 (30%) with 3:1 ratio). The etching solution was made with HF (50%): H_2O_2 (35%): EtOH with 10:1:3 ratio in volumes. Ethanol, acetone and deionised water were used to rinse the samples. All reagents were purchased from Carlo Erba Reagents. SERS active molecule is 7-mercapto-4-methylcoumarin ($\text{C}_{10}\text{H}_8\text{O}_2\text{S}$), purchased by Sigma-Aldrich.

Nanospheres lithography. Sample preparation started by cleaning the silicon substrates (2.25 cm^2) with acetone, ethanol and deionised (DI) water. Surface was made hydrophilic for the deposition of NSs aqueous solution by immersing the samples in piranha solution at 80°C for 40 minutes and abundantly rinsing with DI water. We deposited the NSs using a programmable spin coater (Laurell Technologies) to modify the steps of the process. For each sample, we spread $60\text{ }\mu\text{l}$ of colloidal solution on the hydrophilic wafer. Our protocol consisted in two steps, the first lasts for 10 s where ω and α are set to 500 rpm ($1\text{ rpm} = \pi/30\text{ rad s}^{-1}$) and 410 rpm/s, respectively. We varied the second step to find the best parameters as reported in the Results and Discussion. The resulting monolayer of NSs is treated with plasma etching (Bdiscom Plasma Matrix) using argon ions with 75 W RF power in a pressure of 1 Pa for 8 minutes. NSs are reduced in size and result in a non-close-packed monolayer that constitutes a shadow mask for the deposition of 20 nm of gold. Gold was evaporated by e-gun in a high-vacuum chamber (base pressure $5 \cdot 10^{-5}\text{ Pa}$, distance from the crucible 10 cm, accelerating voltage 6 kV, filament current

35 mA and deposition rate 1.5 nm s⁻¹). We lifted off the NSs in an ultrasonic bath of ethanol and obtained a pattern on gold with a two dimensional array of circular openings corresponding to the position of the spheres.

Correlation length analysis. The quality of the NSs monolayer was investigated through the systematic acquisition of SEM micrographs for each sample by using a FEI Inspect-F field emission gun scanning electron microscope (FEG-SEM). Image processing and quantitative analysis was carried out by a MATLAB® tool. The software operates by identifying each NS within a given size interval and with a certain sensitivity level influenced by contrast and brightness of the image. Each particle is represented by a point in the HCP lattice and connected to all its nearest neighbours. Each point having less or more than six nearest neighbours, expected in the six-fold coordination, is identified as a defect⁵². The defects delimit the domains boundaries in the triangulation diagram, as shown in Supplementary Fig. S3. From this diagram, the software extrapolates a colour map wherein each colour variation corresponds to a different orientation of the domains. Elaborating the colour maps data generates the so-called auto correlation function $ACF = e^{-r/\xi}$, where r is the vector indicating the location of the domains in the two-dimensional lattice⁵³. The coherency of the order is preserved within a distance ξ , obtained through an exponential fitting of the ACF.

Nanowires fabrication and SERS measurements. MACE was used for the fabrication of Si NWs^{18,54}. Ethanol was used in the solution to increase the adhesion of the gold layer to the substrate⁵⁵. We set the etching time to 210 s and then abundantly rinsed the sample with ethanol and let it dry in air. The result is a matrix of standing silicon NWs, with high aspect ratio of 1:10. This feature determines the flexibility of NWs. The ultimate substrate for SERS is obtained by coating the silicon NWs with 100 nm of gold on top as shown in Fig. 3e. Before depositing the probe molecule, we performed plasma cleaning in O₂ (40 W, 1 minute) to remove any organic residue from the surface. The samples were immersed in a 1 mM solution of MMC in ethanol for 120 minutes and then rinsed with ethanol to remove any excess from the surface. They were subsequently rinsed with DI water to induce the bending of the NWs, due to capillarity effect arising during the evaporation of water because of its high surface tension coefficient, and to entrap the molecules in the hot spot regions¹⁸.

We carried out SERS measurement using a Thermo Scientific DXR™ xi Raman Imaging confocal microscope system equipped with an excitation laser source at 780 nm, a full range resolution grating of 5 cm⁻¹ with a spectral range from 50 cm⁻¹ to 3500 cm⁻¹, a 10x microscope objective, a 50 µm pinhole aperture and an automatic x, y motorised stage. Each spectrum of the map was registered at 600 Hz (0.00167 s integration time) with 10 scans and with a laser power of 8 mW. The spectral maps were processed with MATLAB® for map unfolding, statistics and colour maps reconstruction based on the intensity of the peak of interest. The experiments for the enhancement factor calculation were carried out using the same instrumentation equipped with a 20x long working distance (LWD) microscope objective. Raman spectra were registered with an exposure time of 1 s for 20 scans in total and at a laser power of 8 mW. More details about the method and the calculation of the EF can be found in the Supplementary Information.

Computational procedure. Geometry optimisation of model MMC structures and consequent calculations of vibrational (IR and Raman) spectra were carried out with DFT method using Gaussian 03 program⁵⁶. Full geometry optimisations were carried out without symmetry constraints. Computations were performed with the Lee, Yang and Parr correlation functional (LYP)⁵⁷ combined with the Becke's non-local three-parameter hybrid exchange functional, (B3)⁵⁸. Vibrational data were compared with the experimental Raman spectrum of MMC and the main bands in the spectrum were assigned³⁸.

Data availability. The datasets generated during and/or analysed during the current study are available from the corresponding author on reasonable request.

References

- Stiles, P. L., Dieringer, J. A., Shah, N. C. & Van Duyne, R. P. Surface-Enhanced Raman Spectroscopy. *Annu. Rev. Anal. Chem.* **1**, 601–626, <https://doi.org/10.1146/annurev.anchem.1.031207.112814> (2008).
- Le Ru, E. C. & Etchegoin, P. G. *Principles of surface enhanced Raman spectroscopy and related plasmonic effects* (Elsevier Ltd, 2009).
- Willetts, K. A. & Duyne, R. P. V. Localized Surface Plasmon Resonance Spectroscopy and Sensing. *Annu. Rev. Phys. Chem.* **58**, 267–297, <https://doi.org/10.1146/annurev.physchem.58.032806.104607> (2007).
- Fan, M., Andrade, G. F. S. & Brolo, A. G. A review on the fabrication of substrates for surface enhanced Raman spectroscopy and their applications in analytical chemistry. *Anal. Chim. Acta* **693**, 7–25, <https://doi.org/10.1016/j.aca.2011.03.002> (2011).
- Le Ru, E. C., Meyer, M., Etchegoin, P. G., Le Ru, E. C. & Blackie, E. Surface Enhanced Raman Scattering Enhancement Factors: A Comprehensive Study. *J. Phys. Chem. C* **111**, 13794–13803, <https://doi.org/10.1021/jp0687908> (2007).
- Radziuk, D. & Moehwald, H. Prospects for plasmonic hot spots in single molecule SERS towards the chemical imaging of live cells. *Phys. Chem. Chem. Phys.* **17**, 21072–21093, <https://doi.org/10.1039/C4CP04946B> (2015).
- Chen, H. Y., Lin, M. H., Wang, C. Y., Chang, Y. M. & Gwo, S. Large-Scale Hot Spot Engineering for Quantitative SERS at the Single-Molecule Scale. *J. Am. Chem. Soc.* **137**, 13698–13705, <https://doi.org/10.1021/jacs.5b09111> (2015).
- Kleinman, S. L., Frontiera, R. R., Henry, A.-I., Dieringer, J. A. & Van Duyne, R. P. Creating, characterizing, and controlling chemistry with SERS hot spots. *Phys. Chem. Chem. Phys.* **15**, 21–36, <https://doi.org/10.1039/c2cp42598j> (2013).
- Liu, X., Shao, Y., Tang, Y. & Yao, K.-F. Highly Uniform and Reproducible Surface Enhanced Raman Scattering on Air-stable Metallic Glassy Nanowire Array. *Sci. Rep.* **4**, 1–7, <http://www.ncbi.nlm.nih.gov/pubmed/25060646>, <https://doi.org/10.1038/srep05835> (2014).
- Fu, Q. *et al.* Highly Reproducible and Sensitive SERS Substrates with Ag Inter-Nanoparticle Gaps of 5 nm Fabricated by Ultrathin Aluminum Mask Technique. *ACS Appl. Mater. Interfaces* **7**, 13322–13328, <https://doi.org/10.1021/acsami.5b01524> (2015).
- Schmidt, M. S., Hubner, J. & Boisen, A. Large area fabrication of leaning silicon nanopillars for Surface Enhanced Raman Spectroscopy. *Adv. Mater.* **24**, 11–18, <https://doi.org/10.1002/adma.201103496> (2012).
- Hu, M. *et al.* Nano gold fingers for molecule trapping and detection. *J. Am. Chem. Soc.* **132**, 12820–12822, <https://doi.org/10.1021/ja105248h> (2010).

13. Chen, J. *et al.* Surface-enhanced Raman scattering of rhodamine 6G on nanowire arrays decorated with gold nanoparticles. *Nanotechnology* **19**, 275712, <https://doi.org/10.1088/0957-4484/19/27/275712> (2008).
14. Yu, Q., Guan, P., Qin, D., Golden, G. & Wallace, P. M. Inverted size-dependence of surface-enhanced Raman scattering on gold nanohole and nanodisk arrays. *Nano Lett.* **8**, 1923–1928, <https://doi.org/10.1021/nl0806163> (2008).
15. Lesuffleur, A., Kumar, L. K. S., Brolo, A. G., Kavanagh, K. L. & Gordon, R. Apex-enhanced Raman spectroscopy using double-hole arrays in a gold film. *J. Phys. Chem. C* **111**, 2347–2350, <https://doi.org/10.1021/jp067677e> (2007).
16. Lee, W., Lee, S. Y., Briber, R. M. & Rabin, O. Self-assembled SERS substrates with tunable surface plasmon resonances. *Adv. Funct. Mater.* **21**, 3424–3429, <https://doi.org/10.1002/adfm.201101218> (2011).
17. Li, T. *et al.* Wafer-Scale Nanopillars Derived from Block Copolymer Lithography for Surface-Enhanced Raman Spectroscopy. *ACS Appl. Mater. Interfaces* **8**, 15668–15675, <https://doi.org/10.1021/acsami.6b05431> (2016).
18. Kara, S. A. *et al.* Fabrication of flexible silicon nanowires by self-assembled metal assisted chemical etching for surface enhanced Raman spectroscopy. *RSC Adv.* **6**, 93649–93659, <https://doi.org/10.1039/C6RA20323J> (2016).
19. Baek, K. M., Kim, J. M., Jeong, J. W., Lee, S. Y. & Jung, Y. S. Sequentially Self-Assembled Rings-in-Mesh Nanoplasmonic Arrays for Surface-Enhanced Raman Spectroscopy. *Chem. Mater.*, <https://doi.org/10.1021/acs.chemmater.5b01397> (2015).
20. Haes, A. J., Zou, S., Schatz, G. C. & Van Duyne, R. P. A Nanoscale Optical Biosensor: The Long Range Distance Dependence of the Localized Surface Plasmon Resonance of Noble Metal Nanoparticles. *J. Phys. Chem. B* **108**, 109–116, <https://doi.org/10.1021/jp0361327> (2003).
21. Fang, C., Brodoceanu, D., Kraus, T. & Voelcker, N. H. Templated silver nanocube arrays for single-molecule SERS detection. *RSC Adv.* **3**, 4288–4293, <https://doi.org/10.1039/c3ra22457k> (2013).
22. Zrimsek, A. B., Henry, A.-I. & Van Duyne, R. P. Single Molecule Surface-Enhanced Raman Spectroscopy without Nanogaps. *J. Phys. Chem. Lett.* **4**, 3206–3210, <https://doi.org/10.1021/jz4017574> (2013).
23. Wang, H. P., Lai, K. Y., Lin, Y. R., Lin, C. A. & He, J. H. Periodic Si nanopillar arrays fabricated by colloidal lithography and catalytic etching for broadband and omnidirectional elimination of fresnel reflection. *Langmuir* **26**, 12855–12858, <https://doi.org/10.1021/la1012507> (2010).
24. Wang, J., Duan, G., Li, Y., Liu, G. & Cai, W. Wet etching-assisted colloidal lithography: A general strategy toward nanodisk and nanohole arrays on arbitrary substrates. *ACS Appl. Mater. Interfaces* **6**, 9207–9213, <https://doi.org/10.1021/am501326w> (2014).
25. Wang, M. *et al.* CVD growth of large area smooth-edged graphene nanomesh by nanosphere lithography. *Sci. Rep.* **3**, 1238, <https://doi.org/10.1038/srep01238> (2013).
26. Chen, K. *et al.* Moire Nanosphere Lithography. *ACS Nano* **9**, 6031–6040, <https://doi.org/10.1021/acsnano.5b00978> (2015).
27. Retsch, M. *et al.* Fabrication of large-area, transferable colloidal monolayers utilizing self-assembly at the air/water interface. *Macromol. Chem. Phys.* **210**, 230–241, <https://doi.org/10.1002/macp.200800484> (2009).
28. Gómez, M. & Lazzari, M. Reliable and cheap SERS active substrates: Ordered vs disordered. *Mater. Today* **17**, 358–359, <https://doi.org/10.1016/j.mattod.2014.08.001> (2014).
29. Toolan, D. T. W., Fujii, S., Ebbens, S. J., Nakamura, Y. & Howse, J. R. On the mechanisms of colloidal self-assembly during spin-coating. *Soft Matter* **10**, 8804–12, <https://doi.org/10.1039/C4SM01711K> (2014).
30. Parchine, M., McGrath, J., Bardosova, M. & Pemble, M. E. Large Area 2D and 3D Colloidal Photonic Crystals Fabricated by a Roll-to-Roll Langmuir-Blodgett Method. *Langmuir* **32**, 5862–5869, <https://doi.org/10.1021/acs.langmuir.6b01242> (2016).
31. Chen, J. *et al.* Controllable fabrication of 2D colloidal-crystal films with polystyrene nanospheres of various diameters by spin-coating. *Appl. Surf. Sci.* **270**, 6–15, <https://doi.org/10.1016/j.apsusc.2012.11.165> (2013).
32. Colson, P., Cloots, R. & Henrist, C. Experimental design applied to spin coating of 2d colloidal crystal masks: A relevant method? *Langmuir* **27**, 12800–12806, <https://doi.org/10.1021/la202284a> (2011).
33. Harrison, C. *et al.* Reducing substrate pinning of block copolymer microdomains with a buffer layer of polymer brushes. *Macromolecules* **33**, 857–865, <https://doi.org/10.1021/ma991551g> (2000).
34. Chandramohan, A. *et al.* Model for large-area monolayer coverage of polystyrene nanospheres by spin coating. *Sci. Rep.* **7**, 40888, <http://www.nature.com/articles/srep40888>, <https://doi.org/10.1038/srep40888> (2017).
35. Ferrarese Lupi, F. *et al.* Rapid thermal processing of self-assembling block copolymer thin films. *Nanotechnology* **24**, 315601, <https://doi.org/10.1088/0957-4484/24/31/315601> (2013).
36. Giammaria, T. J. *et al.* Micrometer-Scale Ordering of Silicon-Containing Block Copolymer Thin Films via High-Temperature Thermal Treatments. *ACS Appl. Mater. Interfaces* **8**, 9897–9908, <https://doi.org/10.1021/acsami.6b02300> (2016).
37. Hur, S.-M. *et al.* Molecular pathways for defect annihilation in directed self-assembly. *Proc. Natl. Acad. Sci.* **112**, 14144–14149, <https://doi.org/10.1073/pnas.1508225112> (2015).
38. Socrates, G. *Infrared and Raman Characteristic Group Frequencies: Tables and Charts*, 3 edn (Wiley, 2001).
39. Sortur, V., Yenagi, J., Tonannavar, J., Jadhav, V. B. & Kulkarni, M. V. Vibrational assignments for 7-methyl-4-bromomethylcoumarin, as aided by RHF and B3LYP/6-31G* calculations. *Spectrochim. Acta - Part A Mol. Biomol. Spectrosc.* **71**, 688–694, <https://doi.org/10.1016/j.saa.2008.01.016> (2008).
40. Luo, H., Huang, Y., Lai, K., Rasco, B. A. & Fan, Y. Surface-enhanced Raman spectroscopy coupled with gold nanoparticles for rapid detection of phosmet and thiabendazole residues in apples. *Food Control* **68**, 229–235, <https://doi.org/10.1016/j.foodcont.2016.04.003> (2016).
41. Ou, F. S. *et al.* Hot-spot engineering in polygonal nanofinger assemblies for surface enhanced Raman spectroscopy. *Nano Lett.* **11**, 2538–2542, <https://doi.org/10.1021/nl201212n> (2011).
42. Hu, Y. S. *et al.* Enhanced Raman Scattering from Nanoparticle-Decorated Nanocone Substrates: A Practical Approach to Harness In-Plane Excitation. *ACS Nano* **4**, 5721–5730 (2010).
43. Caridad, J. M. *et al.* Hot-Volumes as Uniform and Reproducible SERS-Detection Enhancers in Weakly-Coupled Metallic Nanohelices. *Sci. Rep.* **7**, 45548, <http://www.nature.com/articles/srep45548>, <https://doi.org/10.1038/srep45548> (2017).
44. Wang, C. G. *et al.* Orientation-dependent nanostructure arrays based on anisotropic silicon wet-etching for repeatable surface-enhanced Raman scattering. *Nanoscale* **8**, 4672–4680, <https://doi.org/10.1039/C5NR04750A> (2016).
45. Lin, D. *et al.* Large-Area Au-Nanoparticle-Functionalized Si Nanorod Arrays for Spatially Uniform Surface-Enhanced Raman Spectroscopy. *ACS Nano* **11**, 1478–1487, <https://doi.org/10.1021/acsnano.6b06778> (2017).
46. Huang, J. A. *et al.* Ordered Ag/Si nanowires array: Wide-range surface-enhanced Raman spectroscopy for reproducible biomolecule detection. *Nano Lett.* **13**, 5039–5045, <https://doi.org/10.1021/nl401920u> (2013).
47. Peksa, V. *et al.* Testing gold nanostructures fabricated by hole-mask colloidal lithography as potential substrates for SERS sensors: sensitivity, signal variability, and the aspect of adsorbate deposition. *Phys. Chem. Chem. Phys.* **18**, 19613–19620, <https://doi.org/10.1039/C6CP02752K> (2016).
48. Wu, W. *et al.* Low-Cost, Disposable, Flexible and Highly Reproducible Screen Printed SERS Substrates for the Detection of Various Chemicals. *Sci. Rep.* **5**, 10208, <https://doi.org/10.1038/srep10208> (2015).
49. Jamil, A. K. M., Izake, E. L., Sivanesan, A., Agoston, R. & Ayoko, G. A. A homogeneous surface-enhanced Raman scattering platform for ultra-trace detection of trinitrotoluene in the environment. *Anal. Methods* **7**, 3863–3868, <https://doi.org/10.1039/C5AY00739A> (2015).
50. Novara, C. *et al.* SERS-active Ag nanoparticles on porous silicon and PDMS substrates: A comparative study of uniformity and Raman efficiency. *J. Phys. Chem. C* **120**, 16946–16953, <https://doi.org/10.1021/acs.jpcc.6b03852> (2016).

51. Luo, Z. *et al.* Net-like assembly of Au nanoparticles as a highly active substrate for surface-enhanced Raman and infrared spectroscopy. *J. Phys. Chem. A* **113**, 2467–2472, <https://doi.org/10.1021/jp810387w> (2009).
52. Vega, D. A. *et al.* Ordering mechanisms in two-dimensional sphere-forming block copolymers. *Phys. Rev. E - Stat. Nonlinear, Soft Matter Phys.* **71**, 1–12, <https://doi.org/10.1103/PhysRevE.71.061803> (2005).
53. Liu, C.-C. *et al.* Practical Implementation of Order Parameter Calculation for Directed Assembly of Block Copolymer Thin Films. *J. Polym. Sci. Part B Polym. Phys.* **48**, 2589–2603, <https://doi.org/10.1002/polb.22114> (2010).
54. Huang, Z., Geyer, N., Werner, P., De Boor, J. & Gösele, U. Metal-assisted chemical etching of silicon: A review, <https://doi.org/10.1002/adma.201001784> (2011).
55. Li, L. *et al.* Controlling the Geometries of Si Nanowires through Tunable Nanosphere Lithography. *ACS Appl. Mater. Interfaces* **9**, 7368–7375, <https://doi.org/10.1021/acsami.6b09959> (2017).
56. Frisch, M. J. *et al.* Gaussian 03, \uppercase{R}evision \uppercase{C}.02.
57. Lee, C., Yang, W. & Parr, R. G. Development of the Colle-Salvetti correlation-energy formula into a functional of the electron density. *Phys. Rev. B* **37**, 785–789, <https://doi.org/10.1103/PhysRevB.37.785> (1988).
58. Becke, A. D. Density functional thermochemistry III. The role of exact exchange. *J. Chem. Phys.* **98**, 5648–5652, <https://doi.org/10.1063/1.464913> (1993).

Acknowledgements

The project 15HLT01 MetvBadBugs has received funding from the EMPIR programme co-financed by the Participating States and from the European Union's Horizon 2020 research and innovation programme.

Author Contributions

E.C., F.F.L., A.M.G., N.D.L., A.M.R. and L.B. conceived the experiment, E.C., L.M., F.F.L., A.M.G., M.D., C.P., K.S. conducted the experiment, E.C., L.M., F.F.L. and A.M.G. analysed the results. All authors reviewed the manuscript.

Additional Information

Supplementary information accompanies this paper at <https://doi.org/10.1038/s41598-018-29641-x>.

Competing Interests: The authors declare no competing interests.

Publisher's note: Springer Nature remains neutral with regard to jurisdictional claims in published maps and institutional affiliations.



Open Access This article is licensed under a Creative Commons Attribution 4.0 International License, which permits use, sharing, adaptation, distribution and reproduction in any medium or format, as long as you give appropriate credit to the original author(s) and the source, provide a link to the Creative Commons license, and indicate if changes were made. The images or other third party material in this article are included in the article's Creative Commons license, unless indicated otherwise in a credit line to the material. If material is not included in the article's Creative Commons license and your intended use is not permitted by statutory regulation or exceeds the permitted use, you will need to obtain permission directly from the copyright holder. To view a copy of this license, visit <http://creativecommons.org/licenses/by/4.0/>.

© The Author(s) 2018