

NTIRE 2023 Quality Assessment of Video Enhancement Challenge

Original

NTIRE 2023 Quality Assessment of Video Enhancement Challenge / Liu, Xiaohong; Min, Xionghuo; Sun, Wei; Zhang, Yulun; Zhang, Kai; Timofte, Radu; Zhai, Guangtao; Gao, Yixuan; Cao, Yuqin; Kou, Tengchuan; Dong, Yunlong; Jia, Ziheng; Li, Yilin; Zhao, Kai; Cong, Heng; Shi, Hang; Ma, Zhiliang; Agarla, Mirko; Huang, Zhiwei; Liu, Hongye; Chuang, Ironhead; Fan, Haotian; Zhou, Shiqi; Lai, Yu; Wang, Wenqi; Wu, Haoning; Zhu, Chunzheng; Zhao, Shiling; Brachemi Meftah, Hanene; Shi, Tengfei; Mansouri, Azadeh. - (2023), pp. 1551-1569. (Conference on Computer Vision and Pattern Recognition Vancouver, BC (CAN) 17-24 June 2023) [10.1109/CVPRW59228.2023.00158].

Availability:

This version is available at: 11583/2982308 since: 2023-09-19T12:32:07Z

Publisher:

IEEE/CVF

Published

DOI:10.1109/CVPRW59228.2023.00158

Terms of use:

This article is made available under terms and conditions as specified in the corresponding bibliographic description in the repository

Publisher copyright

IEEE postprint/Author's Accepted Manuscript

©2023 IEEE. Personal use of this material is permitted. Permission from IEEE must be obtained for all other uses, in any current or future media, including reprinting/republishing this material for advertising or promotional purposes, creating new collecting works, for resale or lists, or reuse of any copyrighted component of this work in other works.

(Article begins on next page)

Automated Heuristic Optimization of Prostate VMAT Treatment Planning

Christian Fiandra¹, Alessandro Alparone², Elena Gallio³, Claudio Vecchi²,
Gabiella Balestra⁴, Sara Bartoncini⁵, Samanta Rosati⁴, Riccardo Ragona¹,
Umberto Ricardi¹

¹Department of Oncology, Radiation Oncology, University of Turin, Turin, Italy

²Tecnologie Avanzate T.A. Srl, Turin, Italy

³Medical Physics Unit, A.O.U. Città della Salute e della Scienza, Turin, Italy

⁴Department of Electronics and Telecommunication, Politecnico di Torino, Turin, Italy

⁵Radiation Oncology Unit, A.O.U. Città della Salute e della Scienza, Turin, Italy

Email: christian.fiandra@unito.it

How to cite this paper: Fiandra, C., Alparone, A., Gallio, E., Vecchi, C., Balestra, G., Bartoncini, S., Rosati, S., Ragona, R. and Ricardi, U. (2018) Automated Heuristic Optimization of Prostate VMAT Treatment Planning. *International Journal of Medical Physics, Clinical Engineering and Radiation Oncology*, 7, 414-425.

<https://doi.org/10.4236/ijmpcero.2018.73034>

Received: July 27, 2018

Accepted: August 28, 2018

Published: August 31, 2018

Copyright © 2018 by authors and
Scientific Research Publishing Inc.

This work is licensed under the Creative
Commons Attribution International
License (CC BY 4.0).

<http://creativecommons.org/licenses/by/4.0/>



Open Access

Abstract

Purpose: To investigate a genetic algorithm approach to automatic treatment planning. **Methods:** A Python script based on genetic algorithm (GA) was implemented for VMAT treatment planning of prostate tumor. The script was implemented in RayStation treatment planning system using Python code. Two different clinical prescriptions were considered: 78 Gy prescribed to planning target volume in 39 fractions (GROUP 1) and simultaneous integrated boost (70.2 Gy to prostate bed and 61.1 Gy to seminal vesicles) in 26 fractions (GROUP 2). The script automatically optimizes doses to PTV and OARs according to GA. A comparison with corresponding plans created with Monaco TPS (M) and Auto-Planning module of Pinnacle³ (AP) was carried out. The plans were evaluated with a total score (TS) of PlanIQ software in terms of target coverage and sparing of OARs as well as clinical score (CS) performed by a Radiation Oncologist. **Results:** In GROUP 1, mean value of TS were 150.6 ± 30.7 , 146.3 ± 36.1 and 137.4 ± 35.7 for AP, GA and M respectively. For GROUP 2, mean value for TS were 163.5 ± 16.8 , 163.4 ± 24.7 and 162.9 ± 16.6 for AP, GA and M respectively with no significance differences. In terms of CS, the highest value has been attributed to GA in four patients out of five for both GROUP 1 and 2. **Conclusions:** Genetic approach is practicable for prostate VMAT plan generation and studies are underway in other anatomical sites such as Head and Neck and Rectum.

Keywords

Genetic Algorithm Optimization, Planning Automation, VMAT, Prostate

1. Introduction

Plan generation is generally a manual procedure in which the planner tries to guide the treatment planning system (TPS) towards a favorable plan; but treatment planning has become increasingly complex over the years, particularly regarding the number of organs at risk (OARs) that are included in the optimization of Volumetric Modulated Arc Therapy (VMAT) treatment plans. VMAT planning is complex as it involves a number of dynamic delivery parameters that need to be sequenced with each other. Several VMAT optimization algorithms are in use [1] [2] [3] to choose the most suitable dose distribution. These algorithms employ cost functions to measure the plan quality and to select a good solution. However, the quality of the final plan depends on the planner's skills and experience [4] [5] [6] and on the time allotted. It is therefore essential to develop automatic planning tools in order to reduce the workload, to make more consistent plans and to optimize plan quality.

Various approaches have been developed for automatic generation of optimal treatment plans such as lexicographic inspired approach [7] in the Plan Explorer module based on fulfillment of prioritized clinical goals already implemented in Ray Station (Ray Search Laboratories AB, Stockholm, Sweden), atlas-based planning [8] [9], ideal dose distribution estimation [10] [11] and progressive optimization algorithm as used in Pinnacle³ Auto-Planning (Philips Medical System, Fitchburg, WI) [12] [13] [14] [15].

Genetic algorithms [16] [17] (GAs) are commonly used to generate high-quality solutions for optimization and search problems by relying on bio-inspired operators such as mutation, crossover and selection. In the radiotherapy treatment planning GAs were used to optimize both beam weights and importance factors for three-dimensional forward planning [18] [19] or to find an optimal solution in the inverse planning in terms of selecting optimal plan or beam orientation [20] [21] [22]. The aim of this work was to develop a script using GA to create a good quality treatment plan with RayStation TPS. The script was retrospectively applied to a sample of 10 VMAT prostate patients and compared both with a commercial automatic planning solution and with a manual one.

2. Materials and Methods

2.1. Genetic Algorithms

Genetic algorithms are heuristic optimization algorithms inspired by the principle of natural selection and biological evolution. GAs are local and stochastic search methods based on the biological metaphor working on a population of potential solutions by applying the principle of survival of the fittest, evolving into a most suitable solution to the problem. A fitness function (FF) is defined to evaluate the solutions. New sets of solutions are created applying the genetic operators (mutation, recombination by crossover) to a subset of selected member of the population at each generation. The process leads to an evolution that best fits the environment and to the most suitable set of solutions for solving the un-

derlying problem.

In this study a genetic algorithm-based script was developed for prostate tumor plans. The script was implemented in RayStation treatment planning system (r.v.5.99) using Python code. Two different clinical prescriptions were considered: 78 Gy prescribed to planning target volume (PTV) in 39 fractions (GROUP 1) and simultaneous integrated boost (SIB) (70.2 Gy to prostate bed and 61.1 Gy to seminal vesicles) in 26 fractions (GROUP 2). The script automatically creates beams, prescription doses, auxiliary regions of interest (ROIs) and optimizes doses to PTV and OARs according to genetic algorithm. All plans were generated with the volumetric modulated arc therapy (VMAT) technique and planned for ElektaAxesse™ linear accelerator (4 mm leaf width at isocenter).

The chromosomes of the algorithm were the max equivalent uniform dose (MaxEUD) functions, which were applied to the ROIs created by subtraction between rectum and PTV (Rectum₁) and between bladder and PTV (Bladder₁).

Figure 1 shows the workflow of genetic algorithm; an initial value of MaxEUD was selected by a 3rd degree polynomial function of two variables (volume of ROI and percentage of overlapping volume between original ROI and PTV). The function coefficients were derived from a baseline dataset of 50 patients already planned at the University of Turin radiotherapy clinic. Starting from these values, the range of MaxEUD was created by adding/subtracting 10 Gy ([MaxEUD ± 10 Gy]) (initial range). Ten couples of Rectum1 and Bladder1 MaxEUD were generated randomly ([Rectum1 MaxEUD; Bladder1 MaxEUD]). For each couple, a plan was generated with 20 optimization iterations and scored by FF; coverage of the PTV was assured by a series of optimization parameters with the highest weight inside the objective function. The fitness function was defined as

$$FF = \sqrt{\frac{2(CI)^2 + 4\left(\frac{rAD}{PD}\right)^2 + 2\left(\frac{bAD}{PD}\right)^2 + \left(\frac{lFAD}{PD}\right)^2 + \left(\frac{rFAD}{PD}\right)^2}{10}} \quad (1)$$

where CI and PD are respectively the conformity index (calculated as the ratio between the ROI volume covered by the isodose and the total isodose volume) and the prescribed dose to PTV while rAD, bAD, lFAD and rFAD are the average dose of rectum, bladder and femoral heads (left and right) respectively. The plan with the best FF (the lowest value) was saved and archived. Eight couples were then randomly selected from these initial ten; a randomly selected gender (female or male) and a number (n) between [0; 1] were then assigned to each of them. If n is inferior to 0.1 (mutation probability value), one of the two elements of the couple was randomly changed within the initial range established. The eight couples evolved by crossover action and new eight couples were created. Two new random couples were added to the eight (making a total of ten) and ten more plans were generated from these new couples. This workflow was repeated four times (for a total of 5 cycles). At the end, five plans were selected from the best couples ([Rectum1 MaxEUD; Bladder1 MaxEUD]). The best plan

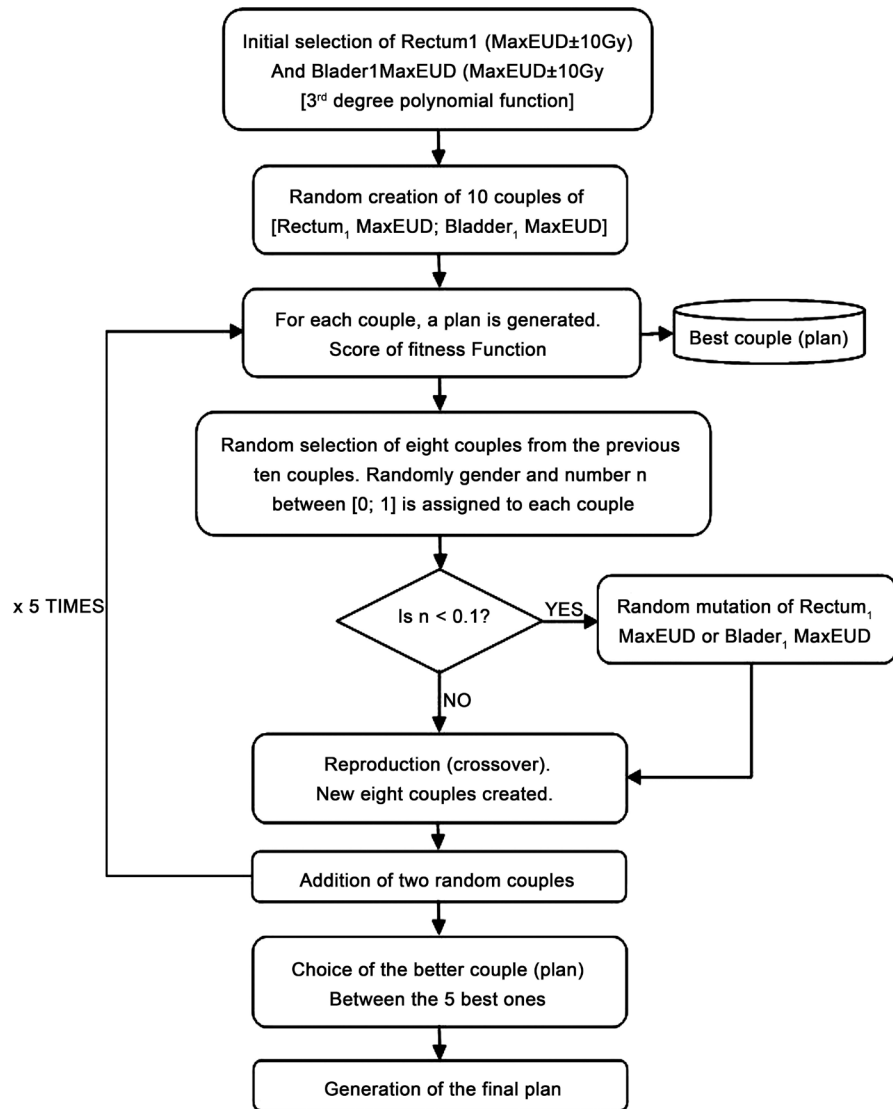


Figure 1. Workflow of the genetic algorithm of the script.

in terms of FF was selected and the final plan was calculated (0.3 cm dose grid and 40 optimization iterations).

We selected ten initial couples and 5 cycles to compromise between total calculation time (more or less half an hour on a PC Intel Xeon, CPU E5-2630 v3 @2.4 GHz equipped with 64 GB ram) and quality of the plan.

2.2. Plans Evaluation and Comparison

Ten patients were selected (five patients for GROUP 1 and five patients for GROUP 2, **Table 1**) and three plans were generated: the first automatic plan was created by GA, the second automatic plan by Auto-Planning module (AP) of Pinnacle³ and the third manual plan by the Monaco treatment planning system (M) (v.5.0, Elekta AB, Stockholm, Sweden).

The plans were evaluated with a total score (TS) generated by PlanIQ software (Sun Nuclear Corp, Melbourne, FL) that measures treatment plan quality with

Table 1. Demographic and clinical characteristics of the patients involved in the study.

Patients characteristics	N (%)
<i>Age</i>	
Mean (yrs)	71.7
Range (yrs)	66-81
<i>z-PSA</i>	
<10 ng/ml	4 (40)
10.1 - 19.9 ng/ml	5 (50)
≥20 ng/ml	1 (10)
<i>Clinical Stage</i>	
cT1c	5 (50)
cT2a	1 (10)
cT2b	1 (10)
cT2c	1 (10)
cT3a	1 (10)
cT3b	1 (10)
<i>Previous prostate surgery</i>	
TURP	2 (20)
Open adenectomy	1 (10)
<i>Androgen deprivation therapy</i>	
Yes	6 (60)
No	4 (40)

metrics that reflect clinical goals in terms of CI of the PTV and clinical constraints of OARs, by means of quantitative Plan Quality Metric (PQM) formalism described in [6] [14]. **Table 2** reports the objectives for the target and OARs and the total maximum achievable score for both groups; these scores derive from an adaptation of prostate protocol proposal of PlanIQ and our clinical constraints. All plans were loaded on the same platform (RayStation) and a clinical score (CS) ranging from 0 to 5 was asked to a well-trained Radiation Oncologist for each plan; a score of at least 3 was requested to consider a single plan acceptable for delivering. Three evaluations for each plan were performed at a different time taking the average value as reference, so considering the intra-evaluation variability. The ANOVA test between GA, M and AP was carried out for all parameters. When the p-value was significant, a Fisher-Hayter test for paired samples (GA and M, AP and M, GA and AP) was applied (5% significance level).

3. Results

All plans were compared in terms of conformity index and for the different constraints of OARs starting from the point that target coverage and homogeneity

Table 2. Objectives and corresponding score of PlanIQ functions for PTV and OARs.

GROUP 1 [PTV dose: 78 Gy (39 fractions)]			
ROI	Parameter	Objective	Max Score
PTV	CI (isodose50%)	>0.8	20
Rectum	V _{65Gy} [%]	<25%	30
Rectum	V _{75Gy} [%]	<15%	30
Rectum	Average Dose [Gy]	<60 Gy	50
Bladder	V _{70Gy} [%]	<35%	30
Bladder	Average Dose [Gy]	<40 Gy	50
Left Femoral Head	Average Dose [Gy]	<52 Gy	10
Right Femoral Head	Average Dose [Gy]	<52 Gy	10
Penile Bulb	Average Dose [Gy]	<52 Gy	5
Total Score			235
GROUP 2 [PTV ₁ dose: 70.2 Gy and PTV ₂ dose: 61.1 Gy (26 fractions)]			
ROI	Parameter	Objective	Max Score
PTV1.2	CI (isodose 50%)	>0.8	20
Rectum	V _{58Gy} [%]	<25%	30
Rectum	V _{67Gy} [%]	<15%	30
Rectum	Average Dose [Gy]	<60 Gy	50
Bladder	V _{64Gy} [%]	<35%	30
Bladder	Average Dose [Gy]	<40 Gy	50
Left Femoral Head	Average Dose [Gy]	<44 Gy	30
Right Femoral Head	Average Dose [Gy]	<44 Gy	30
Penile Bulb	Average Dose [Gy]	<52 Gy	5
Total Score			235

was achieved by all methods as recommended by ICRU 83. **Table 3** reports the PlanIQ scores, clinical score and statistical analysis results. **Figure 2** and **Figure 3** show the PlanIQ score of some relevant “metrics” for both groups of patients. **Figure 4** shows examples of the three distributions of axial, coronal and sagittal dose for one of the GROUP 2 patients.

In GROUP 1, for four patients out of five, Auto-Planning had highest total score (TS) with really minimal difference with GA (less than 3%), while for the patient 2, GA has the highest value; mean value for TS were 150.6 ± 30.7 , 146.3 ± 36.1 and 137.4 ± 35.7 for AP, GA and M respectively with no significant difference reported. In terms of CS, the highest value has been attributed to GA in four patients out of five.

For the second group of patients (GROUP 2), values of TS were higher for GA in three out of five patients whereas for the patient 3 GA has the lower value among the planning systems. In particular, we can observe the low value mainly

Table 3. PlanIQ scores, Clinical score and results of statistical analysis obtained for plans generated with genetic algorithm-based script of RayStation (GA), Monaco TPS (M) and Pinacle³ Auto-Planning module (AP) for both cases.

GROUP 1 [PTV dose: 78 Gy (39 fractions)]												
Pts	TPS	PTV Conformity Index (/20)	Rectum V65 Gy (/30)	Rectum V75 Gy (/30)	Rectum Average Dose (/50)	Bladder V70 Gy (/30)	Bladder Average Dose (/50)	Left Femoral Head Average Dose (/10)	Right Femoral Head Average Dose (/10)	Penile Bulb Average Dose (/5)	Total Score (/235)	Clinical score
1	GA	13.29	30.00	30.00	31.10	30.00	25.59	10.00	10.00	0.00	179.98	5
	M	14.50	30.00	30.00	19.90	30.00	24.09	10.00	10.00	5.00	173.49	4
	AP	11.13	30.00	30.00	30.67	30.00	26.55	10.00	10.00	5.00	183.05	4.5
2	GA	12.95	30.00	30.00	24.32	30.00	16.96	10.00	10.00	0.00	164.23	5
	M	13.16	14.67	30.00	19.05	30.00	21.55	10.00	10.00	0.00	148.43	4
	AP	13.14	26.57	30.00	20.18	30.00	21.82	10.00	10.00	0.00	161.71	4.5
3	GA	12.89	0.93	0.00	16.36	30.00	9.04	10.00	10.00	0.00	89.22	4.5
	M	12.26	0.00	0.00	14.46	30.00	10.46	10.00	10.00	5.00	92.18	4
	AP	14.23	3.95	3.95	16.67	30.00	12.13	10.00	10.00	5.00	105.93	5
4	GA	12.75	8.24	17.28	15.42	30.00	29.72	10.00	10.00	0.00	133.41	5
	M	10.98	0.14	3.88	16.30	30.00	26.58	10.00	10.00	0.00	107.88	3.5
	AP	11.07	10.82	17.48	16.99	30.00	27.50	10.00	10.00	0.00	133.86	4.5
5	GA	14.36	30.00	30.00	23.88	30.00	16.27	10.00	10.00	0.00	164.51	5
	M	12.80	30.00	30.00	21.07	30.00	21.21	10.00	10.00	0.00	165.08	4.5
	AP	11.34	30.00	30.00	26.20	30.00	21.04	10.00	10.00	0.00	168.58	4
ANOVA test p-value		0.39	0.8	0.92	0.42	1	0.87	1	1	0.3	0.83	0.003 (GA/M)
GROUP 2 [PTV ₁ dose: 70.2 Gy and PTV ₂ dose: 61.1 Gy (26 fractions)]												
Pts	TPS	PTV Conformity Index (/20)	Rectum V58 Gy (/30)	Rectum V67 Gy (/30)	Rectum Average Dose (/50)	Bladder V64 Gy (/30)	Bladder Average Dose (/50)	Left Femoral Head Average Dose (/10)	Right Femoral Head Average Dose (/10)	Penile Bulb Average Dose (/5)	Total Score (/235)	Clinical score
1	GA	12.63	30.00	30.00	30.56	30.00	27.72	10.00	10.00	0.00	180.91	5
	M	13.22	30.00	30.00	28.17	30.00	21.87	10.00	10.00	5.00	178.26	4
	AP	11.79	30.00	30.00	28.65	30.00	26.94	10.00	10.00	5.00	182.38	4.5
	GA	14.01	30.00	30.00	26.04	30.00	24.70	10.00	10.00	0.00	174.75	5
2	M	12.49	30.00	30.00	23.92	30.00	22.26	10.00	10.00	5.00	173.67	4.5
	AP	13.92	30.00	30.00	22.39	30.00	23.39	10.00	10.00	5.00	174.70	4
	GA	14.18	0.00	18.71	16.20	30.00	16.19	10.00	10.00	5.00	120.28	4
3	M	13.62	6.81	30.00	18.34	30.00	13.50	10.00	10.00	5.00	137.27	5
	AP	14.85	7.52	30.00	17.21	30.00	16.77	10.00	10.00	5.00	141.35	4.5
	GA	13.84	20.52	30.00	21.43	30.00	30.07	10.00	10.00	0.00	165.86	5
4	M	11.70	18.56	30.00	19.20	30.00	26.20	10.00	10.00	0.00	155.66	4
	AP	12.52	12.75	30.00	17.70	30.00	28.75	10.00	10.00	0.00	151.72	4.5
	GA	14.33	30.00	30.00	25.42	30.00	25.42	10.00	10.00	0.00	175.17	5
5	M	14.35	30.00	30.00	23.75	30.00	21.65	10.00	10.00	0.00	169.75	5
	AP	12.92	30.00	30.00	23.24	30.00	21.15	10.00	10.00	0.00	167.31	4.5
ANOVA test p value		0.49	0.99	0.4	0.78	1	0.5	1	1	0.39	0.99	0.308

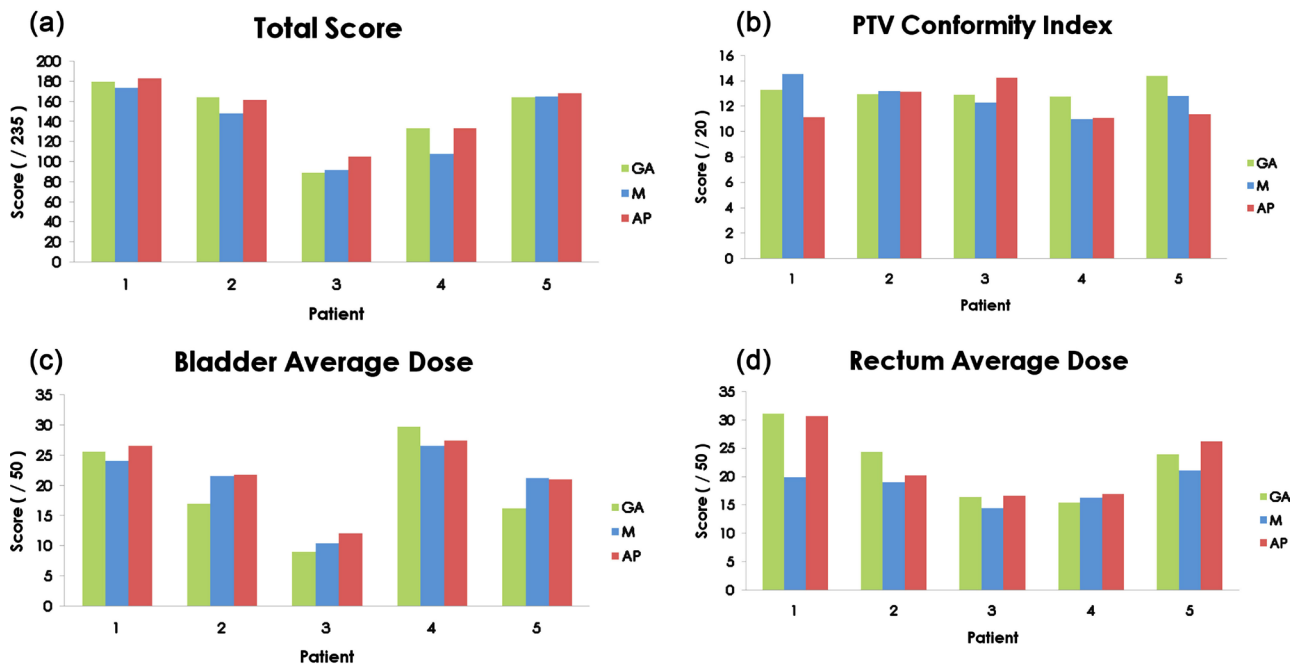


Figure 2. Total Score (a), PTV conformity index (b), average dose (AD) of bladder (c) and rectum (d) for the first group of patients (GROUP 1) obtained with genetic algorithm-based script of RayStation (GA), Monaco TPS (M) and Pinacle³ Auto-Planning module (AP).

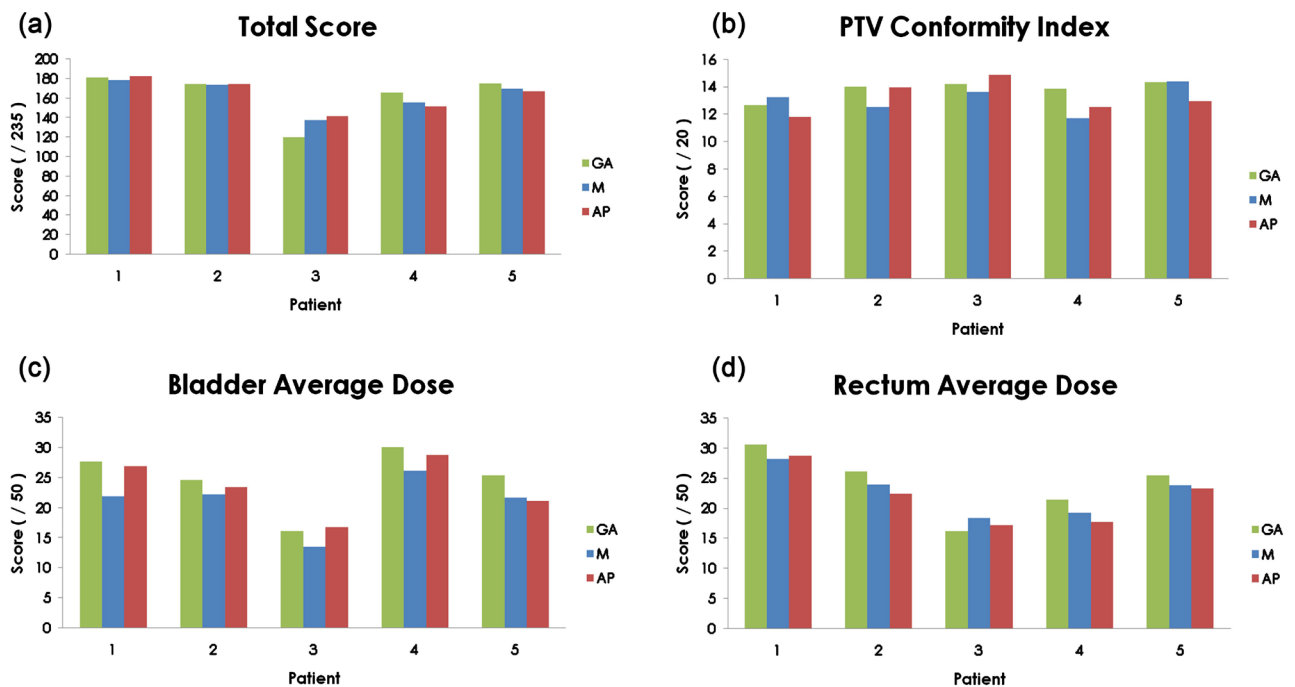


Figure 3. Total Score (a), PTV conformity index (b), average dose (AD) of bladder (c) and rectum (d) for the second group of patients (GROUP 2) obtained with genetic algorithm-based script of RayStation (GA), Monaco TPS (M) and Pinacle³ Auto-Planning module (AP).

due to V_{58Gy} that is over the acceptable value. Also, in this case CS was able to detect the difference giving the lower value to GA. Mean value for TS were 163.5 ± 16.8 , 163.4 ± 24.7 and 162.9 ± 16.6 for AP, GA and M respectively. No significant

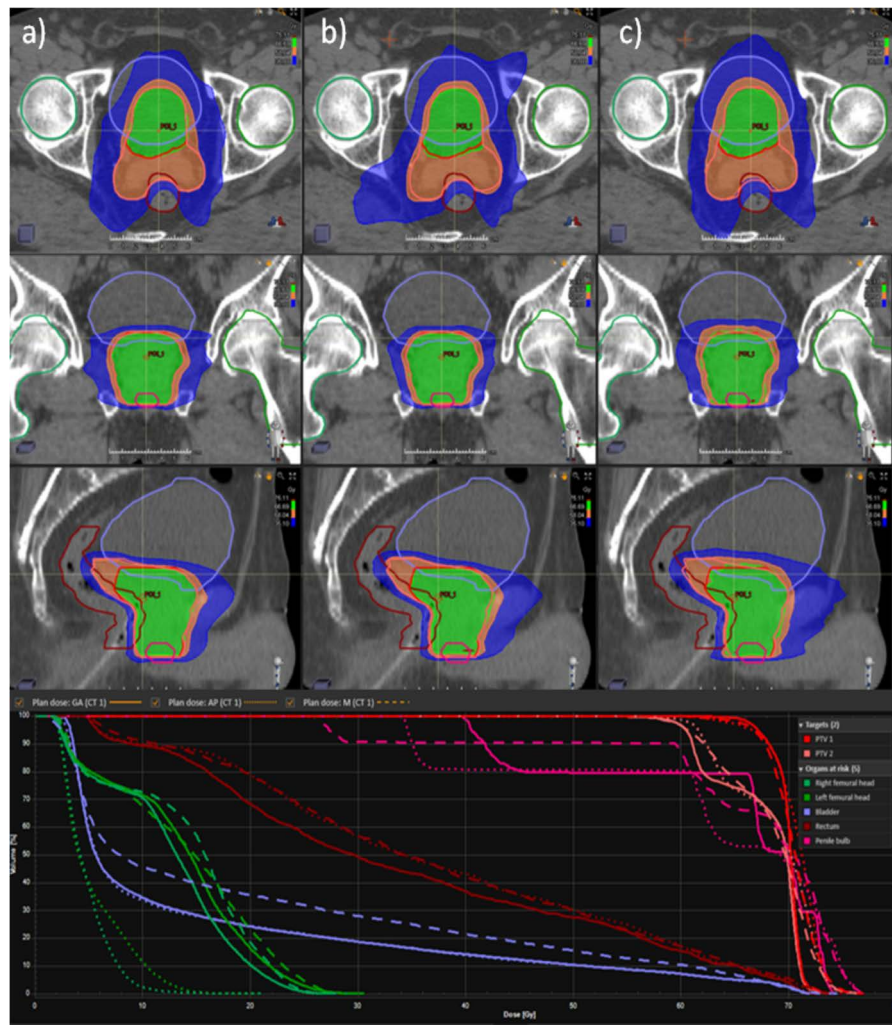


Figure 4. Isodoses and DVHs representing a single SIB treatment plan for GA (a), Pinnacle Auto Planning (b) and Monaco (c).

differences were reported from ANOVA's test for all considered parameters including CS for both cases.

4. Discussion

The automation of inverse treatment planning optimization in radiation oncology has become an active research topic in recent years. The aim of our study was to develop a fully automated process for VMAT prostate treatment planning, based on a stochastic search for an optimal solution in terms of tumor control and sparing of normal tissue. The scripting capabilities in RayStation enables/facilitates the development of clinic specific approach to automatic planning. Python code scripts are capable of reading and entering all dosimetric data and thus enabling the user to produce automatic high-quality plans; however, plan quality assessment should be carried out in order to compare the quality of the manually generated plans with the automatic plans.

In this study, manually plans were created and, given the seven-year expe-

rience with Monaco TPS in the department, the overall quality is expected to be sufficiently high for carrying out a comparison. We also decided to use an evaluation version of a commercial system, Pinnacle³ Auto-Planning, equipped with a progressive optimization algorithm. It was employed to produce the best deliverable treatment plan for each patient. Other authors have observed that Auto-Planning software appears to be a useful tool for increasing the overall quality of the treatments and reducing the inter-observer variation present in manually-created plans [12] [15]. It is important to note the inherent complexity of a plan comparison study due to the different plan optimization strategies within any department. With Plan IQ software, we were able to obtain an independent score by means of quantitative scorecards and so it is an objective evaluation tool. But we may obtain different results with different metrics reflecting other specific clinical goals; therefore, every result in terms of planning comparison must be evaluated taking account of the uncertainty related to the metric. We also add a clinical evaluation of each plan from a Radiation Oncologist to give more robustness to the comparison.

GROUP 1 with high dose (78 Gy) also prescribed to seminal vesicles may be considered more challenging compared to GROUP 2 because lower values of TS are obtained. This was intentionally done to stress as much as possible the optimization algorithms. TS differences between the manual and automatic plans is more pronounced for GROUP 1 than for GROUP 2. The patient 3 was the most challenging patient in terms of anatomical intersection between target and organs at risk; actually, TS values are the lowest both for GROUP 1 and GROUP 2. It's interesting to note the agreement of CS with TS for the best plan in the patient 3 as well as the worst plan in the patient 4, where the M solution has TS 20% lower than AP and GA. Also, for GROUP 2, the worst performance of GA in the patient 3 in terms of TS (15% lower than AP and M) was detected by CS, so giving more robustness to the PQM evaluation.

From statistical point of view, the plans of all involved platform didn't present significance differences; the genetic algorithm, in a contest of relatively simple optimization problem as may be considered a prostate plan, has satisfied the "no difference" intent compared to two well-known robust commercial solutions represented by AP and M. From clinical point of view, it was considered the best solution in 8 patients out of 10; the involved Radiation Oncology had a very good impression in terms of shape of isodoses as well as visual and numerical inspection of DVH, that is the current way to decide the best plan in our clinical routine.

However, more and more Radiation Oncologists should be involved as in the definition of different PQMs as well in the evaluation of the quality of the plans to estimate the uncertainty related to the valuation process.

5. Conclusion

This preliminary study shows that it is feasible to use the heuristic approach for

good quality plan generation in the context of VMAT prostate treatment planning with no significance difference compared to Pinnacle³ Auto-Planning that is a commercial solution that provides very good results in terms of plan quality and robust automation. Studies are underway to determine whether genetic algorithms can be used in other sites, as they appear to be a promising tool for automated inverse planning.

Conflicts of Interest

The authors declare no conflicts of interest regarding the publication of this paper.

References

- [1] Earl, M.A., Shepard, D.M., Naqvi, S., *et al.* (2003) Inverse Planning for Intensity-Modulated Arc Therapy Using Direct Aperture Optimization. *Physics in Medicine & Biology*, **48**, 1075-1089. <https://doi.org/10.1088/0031-9155/48/8/309>
- [2] Otto, K.L. (2008) Volumetric Modulated Arc Therapy: IMRT in a Single Gantry Arc. *Medical Physics*, **35**, 310-317. <https://doi.org/10.1118/1.2818738>
- [3] Cameron, C. (2005) Sweeping-Window Arc Therapy: An Implementation of Rotational IMRT with Automatic Beam-Weight Calculation. *Physics in Medicine & Biology*, **50**, 4317-4136. <https://doi.org/10.1088/0031-9155/50/18/006>
- [4] Marino, C., Villaggi, E. and Maggi, G. (2015) A Feasibility Dosimetric Study on Prostate Cancer: Are We Ready for a Multicenter Clinical Trial on SBRT? *Strahlentherapie und Onkologie*, **191**, 573-581. <https://doi.org/10.1007/s00066-015-0822-6>
- [5] Giglioli, F.R., Strigari, L., Ragona, R., *et al.* (2016) Lung Stereotactic Ablative Body Radiotherapy: A Large Scale Multi-Institutional Planning Comparison for Interpreting Results of Multi-Institutional Studies. *Physica Medica*, **32**, 600-612. <https://doi.org/10.1016/j.ejmp.2016.03.015>
- [6] Nelms, B.E., Robinson, G., Markham, J., *et al.* (2012) Variation in External Beam Treatment Plan Quality: An Inter-Institutional Study of Planners and Planning Systems. *Practical Radiation Oncology*, **2**, 296-305. <https://doi.org/10.1016/j.prro.2011.11.012>
- [7] Albin, F. (2012) Automated Improvement of Radiation Therapy Treatment Plans by Optimization under Reference Dose Constraints. *Physics in Medicine & Biology*, **57**, 7799-7811. <https://doi.org/10.1088/0031-9155/57/23/7799>
- [8] Fogliata, A., Belosi, F., Clivio, A., Navarria, P., Nicolini, G., Scorsetti, M., *et al.* (2014) On the Pre-Clinical Validation of a Commercial Model-Based Optimization Engine: Application to Volumetric Modulated Arc Therapy for Patients with Lung or Prostate Cancer. *Radiotherapy and Oncology*, **113**, 385-391. <https://doi.org/10.1016/j.radonc.2014.11.009>
- [9] Tol, J.P., Delaney, A.R., Dahele, M., Slotman, B.J. and Verbakel, W.F. (2015) Evaluation of a Knowledge-Based Planning Solution for Head and Neck Cancer. *International Journal of Radiation Oncology * Biology * Physics*, **91**, 612-620. <https://doi.org/10.1016/j.ijrobp.2014.11.014>
- [10] Ruan, D., Shao, W., Demarco, J., Tenn, S., King, C., Low, D., *et al.* (2012) Evolving Treatment Plan Quality Criteria from Institution-Specific Experience. *Medical Physics*, **39**, 2708-2712. <https://doi.org/10.1118/1.4704497>
- [11] Breedveld, S.L., Storchi, P.R., Voet, P.W., *et al.* (2012) iCycle: Integrated, Multicri-

- terial Beam Angle, and Profile Optimization for Generation of Coplanar and Non-coplanar IMRT Plans. *Medical Physics*, **39**, 951-963. <https://doi.org/10.1118/1.3676689>
- [12] Krayenbuehl, J., Norton, I., Studer, G. and Guckenberger, M. (2015) Evaluation of an Automated Knowledge Based Treatment Planning System for Head and Neck. *Radiotherapy and Oncology*, **10**, 226-233. <https://doi.org/10.1186/s13014-015-0533-2>
- [13] Hazell, I., Bzdusek, K., Kumar, P., Hansen, C.R., Bertelsen, A., Eriksen, J.G., et al. (2016) Automatic Planning of Head and Neck Treatment Plans. *Journal of Applied Clinical Medical Physics*, **17**, 272-282. <https://doi.org/10.1120/jacmp.v17i1.5901>
- [14] Gintz, D., Latifi, K., Caudell, J., et al. (2016) Initial Evaluation of Automated Treatment Planning Software. *Journal of Applied Clinical Medical Physics*, **17**, 331-346. <https://doi.org/10.1120/jacmp.v17i3.6167>
- [15] Hansen, C.R., Bertelsen, A., Hazell, I., Zukauskaitė, R., Gyldenkerne, N., Johansen, J., Eriksen, J.G. and Brink, C. (2016) Automatic Treatment Planning Improves the Clinical Quality of Head and Neck Cancer Treatment Plans. *Clinical and Translational Radiation Oncology*, **1**, 2-8. <https://doi.org/10.1016/j.ctro.2016.08.001>
- [16] Michalewicz, Z. and Fogel, D.B. (2004) How to Solve It: Modern Heuristics. 2nd Edition, Springer, Berlin. <https://doi.org/10.1007/978-3-662-07807-5>
- [17] Engelbrecht, A.P. (2007) Computational Intelligence: An Introduction. 2nd Edition, Wiley, Hoboken. <https://doi.org/10.1002/9780470512517>
- [18] Wu, X. and Zhu, Y. (2001) An Optimization Method for Importance Factors and Beam Weights Based on Genetic Algorithms for Radiotherapy Treatment Planning. *Physics in Medicine & Biology*, **46**, 1085-1099. <https://doi.org/10.1088/0031-9155/46/4/313>
- [19] Ezzell, G.A. (1996) Genetic and Geometric Optimization of Three-Dimensional Radiation Therapy Treatment Planning. *Medical Physics*, **23**, 293-305. <https://doi.org/10.1118/1.597660>
- [20] Daryl, P., Stephen, B., Matthew, D., et al. (2009) Optimization of Beam Angles for Intensity Modulated Radiation Therapy Treatment Planning Using Genetic Algorithm on a Distributed Computing Platform. *Journal of Medical Physics*, **34**, 129-132. <https://doi.org/10.4103/0971-6203.54845>
- [21] Sabbir, U.A. and Stuart, W.A.B. (2010) A Genetic Algorithm Approach to the Inverse Problem of Treatment Planning for Intensity-Modulated Radiotherapy. *Bio-medical Signal Processing and Control*, **5**, 189-195. <https://doi.org/10.1016/j.bspc.2010.03.001>
- [22] Holdsworth, C., Kim, M., Liao, J. and Phillips, M. (2012) The Use of a Multiobjective Evolutionary Algorithm to Increase Flexibility in the Search for Better IMRT Plans. *Medical Physics*, **39**, 2261-2274. <https://doi.org/10.1118/1.3697535>