

Improving the accuracy of project estimates at completion using the Gompertz function

Original

Improving the accuracy of project estimates at completion using the Gompertz function / Nannini, Giulia; Warburton, Roger; De Marco, Alberto. - In: PROJECT MANAGEMENT RESEARCH AND PRACTICE. - ISSN 2207-1415. - ELETTRONICO. - (2018). [10.5130/pmrp.irnop2017.5670]

Availability:

This version is available at: 11583/2711023 since: 2018-07-20T15:23:20Z

Publisher:

UTS ePRESS

Published

DOI:10.5130/pmrp.irnop2017.5670

Terms of use:

This article is made available under terms and conditions as specified in the corresponding bibliographic description in the repository

Publisher copyright

(Article begins on next page)

Published by
*Project
Management
Research and
Practice*



© 2018 by the author(s). This is an Open Access article distributed under the terms of the Creative Commons Attribution 4.0 International [CC BY 4.0] License (<https://creativecommons.org/licenses/by/4.0/>), allowing third parties to copy and redistribute the material in any medium or format and to remix, transform, and build upon the material for any purpose, even commercially, provided the original work is properly cited and states its license.

Citation: Nannini, G., Warburton, R. D. H. and De Marco, A. 2017. Improving the accuracy of project estimates at completion using the Gompertz function. *International Research Network on Organizing by Projects (IRNOP) 2017*, UTS ePRESS, Sydney: NSW, pp. 1-15. <https://doi.org/10.5130/pmrp.irnop2017.5670>

Published by UTS ePRESS | <http://pmrp.ePress.lib.uts.edu.au>

CONFERENCE PAPER

Improving the accuracy of project estimates at completion using the Gompertz function

Giulia Nannini¹, Roger D.H. Warburton^{2*}, Alberto De Marco³

¹Department of Management and Production Engineering, Politecnico di Torino, Italy. giulia.nannini@studenti.polito.it

²Department of Administrative Sciences, Metropolitan College, Boston University, United States. rwarb@bu.edu

³Department of Management and Production Engineering, Politecnico di Torino, Italy. alberto.demarco@polito.it

***Corresponding author:** Roger D.H. Warburton, Boston University. rwarb@bu.edu

Name: International Research Network on Organizing by Projects (IRNOP) 2017

Location: Boston University, United States

Dates: 11-14 June 2017

Host Organisation: Metropolitan College at Boston University

DOI: <https://doi.org/10.5130/pmrp.irnop2017.5670>

Published: 07/06/2018

Synopsis

A nonlinear regression-based growth model based on the Gompertz S-shaped function is used to forecast cost profiles for ongoing projects experiencing overruns. Based on the standard approach to earned value management and earned schedule, a simple linear expression is derived for the forecast of the duration estimate, and the theoretical formula is validated by application to case projects. The model's predictions are shown to be accurate, stable and reliable. We conclude with practical guidance for project managers.

Relevance for practice and education

An effective method of duration and cost forecasting is established and validated. The duration and cost error formulas are quite simple and practically useful to project management practitioners during project monitoring and control.

DECLARATION OF CONFLICTING INTEREST The author(s) declared no potential conflicts of interest with respect to the research, authorship, and/or publication of this article. **FUNDING** The author(s) received no financial support for the research, authorship, and/or publication of this article.

Research design

Using the standard definition of the earned schedule and Gompertz curve cost profiles, estimates of the final duration are found by using regression curve fitting on the first and last available earned value data. Validation is conducted on many synthetic project data sets.

Main findings

It is found that a simple two-point curve-fitting estimation formula is effective in predicting the duration of an ongoing project.

Research implications

This research broadens discussions on accuracy on nonlinear duration and cost estimates of ongoing projects, using different cost profiles and the standard definitions of the earned schedule.

Keywords

Duration Estimation, Cost Estimation, Gompertz function, Earned Value Management, Earned Schedule

Introduction

Earned value management (EVM) and earned schedule (ES) are widely recognised methodologies that are used to compute duration and cost estimates at completion for in-progress projects. Traditional EVM and ES methods use index-based formulae that are linear, but why should such models be assumed to be reliable when realistic cumulative cost curves are usually S-shaped (Khamooshi & Golafshani 2014)? As a result, nonlinear regression-based estimates have been developed to overcome some of the limitations of linear methods and to better model the S-curve cost profiles of projects in a variety of industries. Such methods are regarded as more sophisticated and are able to generate improved estimates for nonlinear cost growth patterns (Christensen & Heise 1992).

Several growth models are available to describe the S-shaped cost profile of a project (Narbaev & DeMarco 2014a). In particular, the Gompertz function is an interesting sigmoidal curve that is often used to describe phenomena inherent to data with a Sshaped growth pattern. Thus, project EVM datasets can be modelled using Sshaped Gompertz functions for their cumulative cost profiles. Previous research findings have revealed that the Gompertz function is a valid and useful nonlinear cost profile that helps in computing refined estimates of the actual, future duration and cost (Trahan 2009; Narbaev & DeMarco 2014a,b).

The solution to the nonlinear duration estimation problem was provided by Warburton and Cioffi (2016), who constructed a formal theory based on standard earned value management (EVM) and earned schedule (ES) assumptions, which applies to all projects, even those with nonlinear cost profiles. They showed that the standard duration estimation formula, which was previously believed to apply only to linear profiles, actually applies to several types of nonlinear cost profiles, which significantly extends its range of validity.

However, not all cost profiles result in the same, standard duration estimation formula, and therefore it is of interest to determine whether other profiles that have been used successfully

in the past in the prediction of cost and duration, result in the standard formula. Therefore, here we investigate the use of the Gompertz function to predict duration and cost estimates at completion.

Relevant literature

EVM provides early estimates of the project's final cost, which many studies have found to be reliable in practice (Christensen & Heise 1992; Christensen 1993). ES is the basis for duration estimation (Lipke 2003, 2010) and has been shown to work well for many real-world projects (Batselier & Vanhoucke 2015c; Colina & Vanhoucke 2015). However, Evensmo and Karlsen (2006) pointed out that the standard duration and cost estimation formulas are based on linear cumulative cost curves. This was further clarified by Kim and Kim (2014), who showed that both forecast accuracies and early warning credibility are sensitive to S-curve profiles, especially early in a project. Therefore, the nonlinearity of the cost curves significantly affects future estimates.

Batselier and Vanhoucke (2015c) analysed three duration forecasting approaches: the planned value method (Anbari 2003); the earned duration method (EDM); and the earned schedule method (ESM). Lipke (2003, 2010) created the linear duration estimate formula by defining a geometrical construction procedure to determine ES. Khamooshi and Golafshani (2014) criticised ES, along with other EVM analyses, for using monetary measures as a proxy for the true duration and argued that such measures may not accurately represent the duration's progress. They proposed the EDM, which decoupled the cost and schedule dimensions by using actual durations rather than their monetary proxies.

According to Vanhoucke and Vandevorode (2007), all forecasting methods yield similar results, regardless of the method used, which Jacob and Kane (2004) attributed to the high correlation among the methods and that they apply the same basic parameters. Teicholz (1993) compared three forecasting methods for final cost using data from 121 real projects.

Using the real-life project database constructed by Batselier and Vanhoucke (2015a), the three methods were evaluated by Batselier and Vanhoucke (2015b). Although all three methods were found to be practically useful, EDM performed the best. Lipke et al. (2009) studied 12 projects, and estimates of both the final cost and the duration were claimed to be sufficiently reliable for general application. Typically, forecast accuracy is reported as the mean absolute percentage error (MAPE) between the model's prediction and the actual project data (Chen, Chen & Li 2016; Batselier & Vanhoucke 2015b). However, the time over which the mean is taken varies among authors. Also, as Kim (2007) pointed out, an average measure of the error over the entire project's execution has little practical use, as project managers prefer early estimates.

Several researchers have enhanced the linear EVM model. Evensmo and Karlsen (2006) proposed a cubic polynomial cost curve, and Warburton (2011) developed a time-dependent EVM model for projects that follow the nonlinear Putnam-Norden-Rayleigh (PNR) profile (Putnam 1978). Cioffi (2006a) showed that a model often used in population dynamics can be applied to project S-curves, and gave an interesting example of its application to the development of the Oxford English Dictionary, a project spanning many decades (Cioffi, 2006b). Warburton (2014) used a trapezoidal labour profile, which can describe construction projects, to derive accurate duration estimates early in the project.

Elshaer (2013) suggested that although ES sometimes outperformed other methods, it failed when incorrect warnings emerged from non-critical activities. Vanhoucke (2012)

confirmed that the network topology is a significant driver of variability, that S-shaped curves degrade forecasting accuracy and that networks with greater parallelism have more variability. Warburton and Cioffi (2016) recently developed a formal, theoretical foundation for duration estimation that applies to nonlinear, S-shaped cost profiles, which provides a significant motivation for this research.

Chen et al. (2016) reported the accuracy of forecasts using MAPE, and though their model improved forecasting accuracy, it required a logarithm linear transformation of the planned value data and linear regression. Zwikael, Globerson and Raz (2000) evaluated five forecasting models using the mean square error, the mean absolute deviation and the mean absolute percentage error. Narbaev and DeMarco (2014b) proposed a Gompertz-based growth model, using nonlinear regression curve fitting, that improved forecast accuracy (as measured by MAPE) by including schedule progress as a factor in the cost performance.

Data from decades of completed US Department of Defense contracts established that the cost performance index (CPI) rarely changed by more than 10% once the contract had reached the 20% completion point, regardless of the type or phase of the defence contract, weapon system or military service involved (Christensen & Payne 1991). Therefore, in practice, the CPI seems to be a reliable indicator after the 20% completion point. Kim and Kim (2014) analysed timeliness by examining seven duration forecasting methods and showed that forecast accuracy and early warning credibility are very sensitive to S-curve patterns, especially early in a project.

The Gompertz Curve

The Gompertz function is often used to describe phenomena with inherently S-shaped growth patterns and has found wide application in many industries that feature population growth, such as biology and social sciences. As it is extensively used in curve fitting and forecasting, the Gompertz function can be useful in characterising the S-shaped cost profile of projects in a variety of industries, especially when it comes to estimating project overruns due to cost and duration growth (Trahan 2009; Narbaev & DeMarco 2014b). The Gompertz function has been proven as a statistically valid model able to generate more accurate schedule-integrated cost estimates than other nonlinear models, such as the logistic, Bass and Weibull functions (Narbaev & DeMarco 2014a).

The Gompertz curve is typically written as follows:

$$G(t) = \alpha \exp[-e^{\beta - \gamma t}], \quad (1)$$

where α , represents the asymptotic value ($t \rightarrow \infty$) of the Gompertz function and therefore is related to the final budget of the project. That leaves two parameters to be determined, and in the above representation, neither have an obvious project management interpretation.

Therefore, we eliminate β , by defining, $\beta = \gamma T$, where T is the peak in the distribution function, $g(t) = G'(t)$. Differentiating $G(t)$ with respect to t gives $g(t)$, and differentiating again and setting the result to zero shows that T is the peak in the distribution function. Thus, T is a parameter that directly determines the duration of the project, and, in fact, we will show that it is directly related to the actual end time of the project. That leaves just one parameter, γ , which characterises the growth rate of the cumulative curve, and allows for the study of a wide variety of different project cost profiles. Figure 1 presents Gompertz functions with three different values of γ that are similar to real-world project databases (Narbaev & DeMarco 2014b).

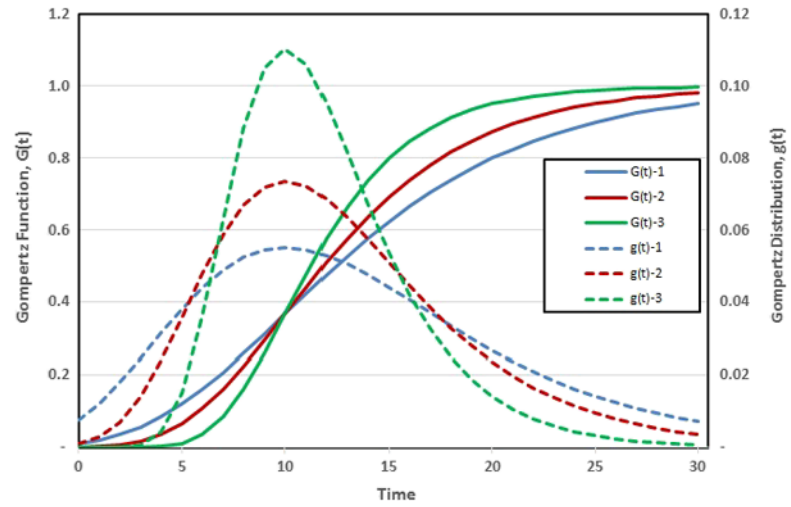


Figure 1 Gompertz functions (solid) and Gompertz distributions (dashed) with the same value of $T = 10$; asymptote, $\alpha = 1$ and different values for γ : blue = 0.15, red = 0.20 and green = 0.25

The Gompertz function and the distribution function are then:

$$\begin{aligned} G(t) &= \alpha \exp \left[-e^{-\gamma(t-T)} \right], \\ g(t) &= \frac{dG(t)}{dt} = \alpha \gamma G(t) e^{-\gamma(t-T)}. \end{aligned} \quad (2)$$

The definition of the end of the project requires some care. The Gompertz function never reaches its asymptotic value, but the planned end of the project is defined to be at a specific time, T_1 . We can define the end of the project as some specific fraction of the asymptotic value, such as 95% or 99%, in which case, at the planned end of the project,

$$G(T_1) = (1 - \varepsilon) G(t \rightarrow \infty) = (1 - \varepsilon) \alpha = \alpha \exp \left[-e^{-\gamma(T_1 - T)} \right]. \quad (3)$$

where ε is a constant. It is convenient to define k as

$$1 - \varepsilon = \exp \left[-e^{-k} \right], \quad (4)$$

which gives,

$$k = \gamma(T_1 - T). \quad (5)$$

Therefore, k is determined once we chose the specific end point of the project as, say, 99% of the asymptote, α . This relation also shows that there is a direct relation between the peak in the distribution function, T , and the end of the project. Further, this gives a practical project management interpretation to the parameter, T , which determines the duration of the project.

Duration and cost estimate formulas

We follow the standard approach to EVM and use Gompertz functions for the cumulative planned value, $Gp(t)$, earned value, $Ge(t)$, and actual cost, $Ga(t)$:

$$\begin{aligned} G_p(t) &= \alpha_p \exp\left[-e^{-\gamma_p(t-T_p)}\right], \\ G_e(t) &= \alpha_e \exp\left[-e^{-\gamma_e(t-T_n)}\right], \\ G_a(t) &= \alpha_a \exp\left[-e^{-\gamma_a(t-T_a)}\right], \end{aligned} \quad (6)$$

The p subscripts denote planned parameters; the e subscripts denote earned parameters; and the a subscripts denote actual parameters.

The total planned cost is the budget, $B = G_p(T_1)$ and the cost estimate at completion is, $E = G_a(T_1)$. The same budget, B , is used as the final cost for both planned and earned values. In this, we follow the standard EVM approach, which says that as each activity is completed, it earns its planned value, even if there is a cost increase or a delay in completing the activity (PMI 2013, 2011). Therefore, at the end of the project, when all the planned work has been completed (i.e. earned), the total earned value equals the total planned value, $G_e(T_1) = G_p(T_1)$. If unplanned work is proposed (e.g. a scope increase), the project must be re-planned, which will generate a new planned cost profile and all formulas in this paper then apply with the new profile replacing the old.

In standard EVM, if no scope creep occurs, the standard cost estimate at completion, CEAC, is the ratio of the budget to the cost performance index, that is, $CEAC = \text{Budget}/CPI$ (PMI 2011).

We define the planned end point of the project as T_1 and assume that, during execution, it ends at T'_1 . If the project is delayed, $T'_1 > T_1$, and if the project is accelerated, $T'_1 < T_1$.

According to the standard EVM methodology, when each activity is completed, it earns its planned value, even if there is a delay in the execution or a cost increase. Therefore, at the end of the project the cumulative planned value, $C_p(t)$, is equal to the cumulative earned value, $C_e(t)$,

$$C_e(T_1) = C_p(T_1). \quad (7)$$

If the planned and earned value curves end at the same percentage of the asymptote (e.g. 99%), then using equation 5, gives

$$\gamma_p(T_1 - T_p) = \gamma_e(T'_1 - T_n), \quad (8)$$

Equation 8 is referred to as the 'end point condition' and is more usefully written as

$$T'_1 = T_n + \frac{\gamma_p}{\gamma_e}(T_1 - T_p). \quad (9)$$

This equation determines T_1 and T'_1 in terms of the peaks in the planned and earned value distribution functions, T_p and T_n .

If the project is delayed, at the current time, t , the delay, $\delta(t)$, is defined as the time difference represented by the horizontal projection back from the point on the earned value curve, at t , to its intersection with the planned value curve (see Figure 2). For accelerated projects, the projection is forward in time. The mathematical representation of this condition is (Warburton & Cioffi 2016)

$$G_e(t) = G_p[t - \delta(t)]. \quad (10)$$

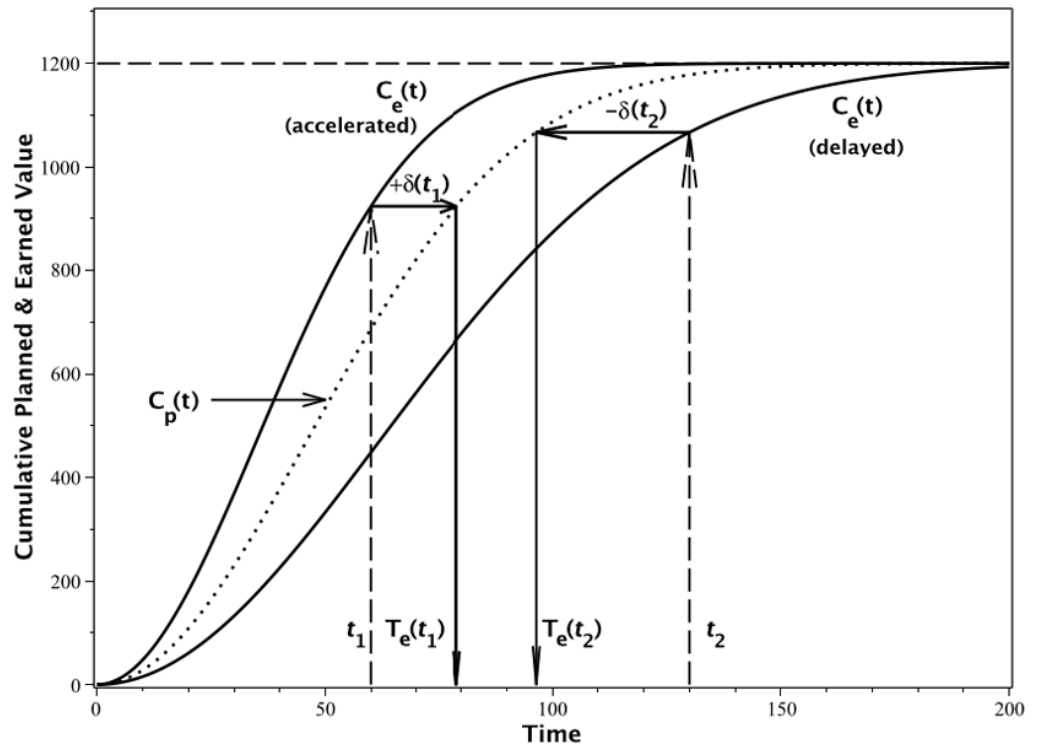


Figure 2 Definition of the delay, $\delta(t)$, as the difference between the earned and planned value curves: $+\delta(t_1)$ is an accelerated project, and $-\delta(t_2)$ is a delayed project. The corresponding earned durations are denoted as $T_e(t_1)$ and $T_e(t_2)$.

We now introduce a new quantity: the earned duration, $T_e(t)$, which is defined as a time-difference: the current time minus the delay, $\delta(t)$:

$$T_e(t) = t - \delta(t). \quad (11)$$

So far, these equations are completely general and independent of the specific shape of the cost curves. Using the above Gompertz functions, equation 6, in the definition of the delay, equation 10, gives

$$\alpha_e \exp \left[-e^{-\gamma_e(t-T_n)} \right] = \alpha_p \exp \left[-e^{-\gamma_p(t-\delta(t)-T_p)} \right], \quad (12)$$

which, upon using equation 11, gives

$$T_e(t) = T_p + \frac{\gamma_e}{\gamma_p} (t - T_n). \quad (13)$$

Using the end point condition, equation 9, gives

$$T'_1 = t + \frac{\gamma_e}{\gamma_p} (T_1 - T_e(t)). \quad (14)$$

At time, t , equation 14 can be used to predict the delayed end point of the project, T'_1 , in terms of known quantities: the planned end point, T_1 ; the earned duration, $T_e(t)$; and the growth parameters for the planned and earned value curves, γ_p and γ_e .

We can compare this prediction with that of Warburton and Cioffi (2016), who derived the following formula for the actual end of the project for several project profiles, including the

linear profile that is the basis for the traditional ES approach. Therefore, we refer to this as the ‘standard’ prediction of the project duration, T'_{1std}

$$T'_{1std} = \frac{tT_1}{Te(t)}. \quad (15)$$

Equation 14 shows that if one were to apply the standard formula (equation 15) when using Gompertz functions, one would not be using the correct expression for the duration estimate. In fact, applying the standard formula to projects represented by Gompertz functions would result in the following prediction for the final duration

$$T''_{1std} = \frac{tT_1}{T_1 + \frac{\gamma_e}{\gamma_p}(t - T'_1)}. \quad (16)$$

We note that at the end of the project, $t \rightarrow \infty$, the above prediction becomes

$$T''_{1std}(\infty) = T''_{1std}(t \rightarrow \infty) = \frac{\gamma_e}{\gamma_p}(T'_1), \quad (17)$$

and using the end point condition gives

$$T'_1 = T''_{1std}(\infty) + T'_1 - T'_1. \quad (18)$$

This interesting result suggests that the standard formula may not converge to the correct answer when using Gompertz functions to model the cost profiles. This result was previously found by Warburton and Cioffi (2016), who showed that the standard formula does not give the correct answer for a project that follows the Cioffi profile.

DURATION ESTIMATE WHEN $\beta p = \beta e$

If the β parameters for the planned and earned Gompertz curves are the same ($\beta p = \beta e$), equation 10, gives

$$T_e(t) = \frac{T_p}{T_n}t, \quad (19)$$

and using the end point condition gives

$$T'_1 = \frac{tT_1}{Te(t)} = \frac{T_1T_n}{T_p}, \quad (20)$$

which is the standard duration estimation formula. Therefore, if one were to use Gompertz functions for the planned and earned values, one could only use the standard formula if the β parameters for the two curves were the same.

We obtain a different prediction estimate when $\gamma p = \gamma e$, and these results are summarised in Table 1.

Table 1 Prediction formulas for different Gompertz parameter combinations

Case	Duration Prediction
$\beta_p = \beta_e$	$T_e(t) = \frac{T_p}{T_n} t$ $T_1' = \frac{tT_1}{Te(t)} = T_1 \frac{T_n}{T_p}$
$\gamma_p = \gamma_e$	$T_e(t) = t + T_p - T_n$ $T_1' = t + T_1 - T_e(t)$

The two-point duration prediction formula

In the early stages of the project, it is very important to be able to forecast a possible delay in order to support effective management decisions. From the above results, it is possible to construct a prediction formula that is easy to use and accurate. At the beginning of the project, we know all the parameters of the planned value curve, $Cp(t)$. On the other hand, we must assume that we know little about the earned value curve, $Ce(t)$, and so it appears wise to consider the general case. Therefore, in order to compute the duration estimates, we need to compute the parameters T_n and γ_e .

We now introduce a method of calculating the earned value curve's parameters by using only two data points from the project's earned value execution data. The mathematical details are contained in the appendix. We investigated a number of approaches for selecting the two data points, but using the first and last data points consistently showed the best results. Using two data points, the system of equations can be solved, and the final duration can be estimated. When we have significantly more than two values of the cumulative earned value data, we can use nonlinear regression to fit the entire earned value data set to a Gompertz function, which determines its parameters. Then, a duration forecast can be determined. Therefore, we have two methods for estimating the final duration:

1. Two-point: Estimates of the final duration are found by using the two-point method on the first and last available earned value data.
2. NR: Nonlinear regression is applied to all available data to date to estimate the Gompertz function parameters and hence the final duration.

RESULTS

To test the effectiveness of the above methods, we generated synthetic data sets for the planned, earned and actual data rates. Planned value data rates were generated by using Gompertz distribution functions, $g_p(t)$, with parameters similar to those found in real projects (Narbaev and DeMarco, 2014b). We then added a random uniform distribution of noise to get the earned value profile, $g_e(t)$, and the actual profile, $g_a(t)$. Many example data sets were generated, and the duration and cost predictions analysed using the above methods.

A typical example of the cost rate profiles is shown in Figure 3, where significant randomness is evident in the earned value and actual cost rates. The corresponding cumulative cost profiles are shown in Figure 4, where the randomness is smoothed out by the effect of the cumulative computation.

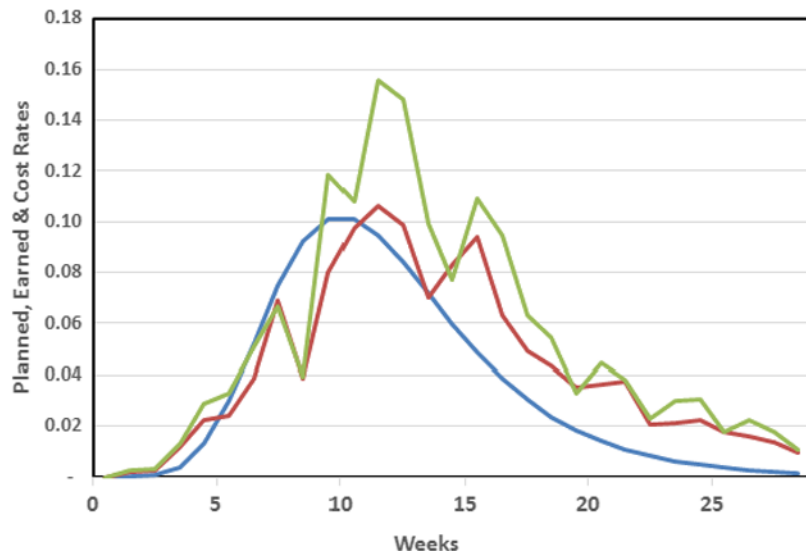


Figure 3 An example of Gompertz distribution functions, with noise, for planned value rate, $g_p(t)$, (blue), earned value rate, $g_e(t)$, (red) and actual cost rate, $g_a(t)$, (green)

The accuracy of the two duration prediction methods is shown in Figure 5, which plots the errors in the duration and cost estimates as the project proceeds. For the two-point method, we used the first data point and the last data point available, that is, at the current time of the prediction (red curve). The regression method used a nonlinear regression fit to all available data at that time (blue curve). For comparison, the error in the standard cost estimate at completion ($CEAC = Budget/CPI$) is also shown (green curve).

There are several interesting features of figure 5. The prediction errors generally decrease as the project proceeds and the duration error falls below about 10% after about 20% of the planned duration. The duration error falls to around 5% after about 30% of the planned duration.

Next, we varied the random contribution in the earned value and actual cost distributions. Somewhat surprisingly, addition of more randomness to the data did not significantly increase

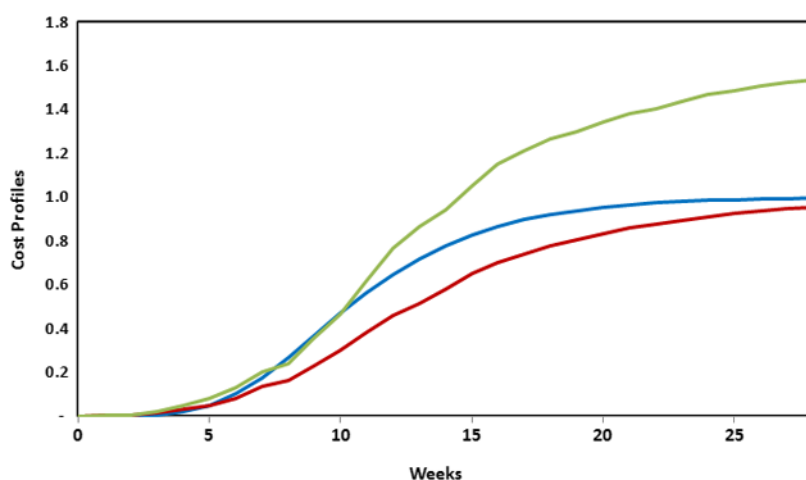


Figure 4 Corresponding Gompertz functions to those of figure 3, for cumulative planned value, $G_p(t)$, (blue), earned value, $G_e(t)$, (red) and actual cost, $G_a(t)$, (green)

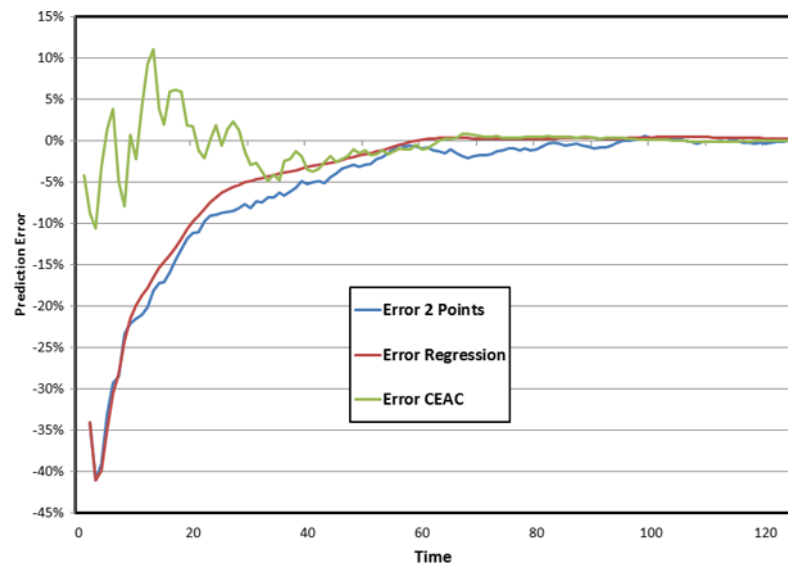


Figure 5 Errors in the estimation of the final duration (two-point method, red; regression, blue) and cost (CEAC, green)

the prediction errors. This is shown in figure 6, which summarises the results. It appears that the averaging effect of the cumulative data effectively smoothes out the deviations. This suggests that a major contribution to duration errors may be associated with biased deviations rather than random deviations, in the earned and actual cost data – a result that needs further exploration.

Conclusions

Using the standard definitions of EVM and ES, we established a sound theoretical basis for the prediction of the project duration when the cumulative cost profiles follow a Gompertz function. We derived formulas for the duration estimates and found the important and interesting result that a simple two-point estimation formula is effective in predicting the duration.

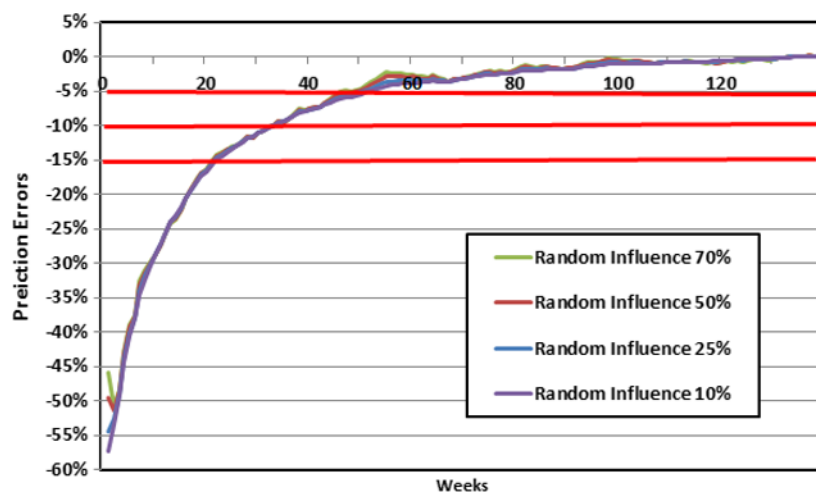


Figure 6 The effect on the prediction error of increasing the random influence is small for quite a wide range of randomness. Where the predictions cross the red lines highlights where the errors fall below 15%, 10% and 5%.

Table 2 summarises the results by providing the prediction errors over time through the project.

Table 2 The decline in the prediction error as a percent through the planned project

Duration Prediction Error	Percent of Plan
15%	15%
10%	20%
5%	35%

Because the entire theory was built on standard EVM and ES definitions, it is proposed as a familiar and accessible methodology for project management practitioners. Also, while the derivation of the error formula was moderately complex, the resulting two-point formula is quite straightforward, especially if compared to some previous studies that require three time points for curve fitting (Narbaev & DeMarco 2014b).

There are several issues that could be explored in future research. One might extend this work to other cost profiles, such as the Cioffi (2005) profile and the trapezoidal profile often used in construction (Warburton 2014). In addition, it might be possible to extend this theory to analyse the impact on the estimates of scope growth during execution. Typically, such methods incorporate estimates of extra work and scope changes needed to increase the project's expectations relative to its original performance. Further investigation might also provide guidance on the selection of appropriate cost profiles and, in particular, the effectiveness of using of Gompertz functions to characterise different categories of projects and industries.

In conclusion, we established a new, effective method of duration and cost estimation over time and validated the theory by comparing its predictions to many synthetic projects. The duration and cost error formulas are quite simple and require little additional effort to be practically useful to project teams during project monitoring and control.

Appendix: Mathematical details

We define two times for which we have earned value data, t_1 and t_2 ($t_1, t_2 > 0$ and $t_1 < t_2$). We also know the earned value data at the two instants of time, $C_e(t_1)$ and $C_e(t_2)$. For these two time values, we calculate the earned duration, $T_e(t)$, from $C_e(t) = C_p(t - \delta(t))$, as

$$T_e(t) = T_p - \frac{1}{\gamma_e} \ln \left[-\ln \left(\frac{C_e(t)}{\alpha} \right) \right]. \quad (21)$$

Once the $T_e(t)$ values are determined, we can calculate T_n and γ_e and thus T_1 in two different ways, but the different approaches lead to essentially the same results.

The first method, called the two-point method, uses the properties of linear functions and allows defining the parameters a and m as

$$T_e(t) = a + m * t. \quad (22)$$

We develop a two-equation system where the $T_e(t)$ values are estimated from equation 21.

$$\begin{aligned} T_e(t_1) &= a + m t_1 \\ T_e(t_2) &= a + m t_2. \end{aligned} \quad (23)$$

After solving the system, we estimate T_1 as

$$T_1' = \frac{T_1 - a}{m}. \quad (24)$$

When we have several values for the cumulative earned value data, we perform a nonlinear regression on the entire earned value data set to determine the parameters of the Gompertz function. The estimate of the duration forecast then follows.

References

- Anbari, F.T. 2003, 'Earned value project management: method and extensions,' *Project Management Journal*, vol. 34, no. 4: pp. 12–23.
- Batselier, J. & Vanhoucke, M. 2015a, 'Construction and evaluation framework for a real-life project database', *International Journal of Project Management*, vol. 33, no. 3: pp. 697–710. <https://doi.org/10.1016/j.ijproman.2014.09.004>
- Batselier, J. & Vanhoucke, M. 2015b, 'Empirical evaluation of earned value management forecasting accuracy for time and cost', *Journal of Construction Engineering Management*, vol. 141. no. 11, pp. 1–13. [https://doi.org/10.1061/\(asce\)co.1943-7862.0001008](https://doi.org/10.1061/(asce)co.1943-7862.0001008)
- Batselier, J. & Vanhoucke, M. 2015c, 'Evaluation of deterministic state-of-the-art forecasting approaches for project duration based on earned value management', *International Journal of Project Management*, vol. 33, no. 7: pp. 1588–96. <https://doi.org/10.1016/j.ijproman.2015.04.003>
- Chen, H.L., Chen, W.T. & Lin, Y.L. 2016, 'Earned value project management: Improving the predictive power of planned value', *International Journal of Project Management*, vol. 34, pp. 22–9. <https://doi.org/10.1016/j.ijproman.2015.09.008>
- Christensen, D.S. 1993, 'The estimate at completion problem: a review of three studies', *Project Management Journal*, vol. 24, pp. 37–42.
- Christensen, D.S. & Heise, S.R. 1992, 'Cost performance index stability', *National Contract Management Journal*, vol. 25, no. 1: pp. 7–15.
- Christensen, D.S. & Payne, K. 1991, 'Cost performance index stability: fact or fiction?', in 'Proceedings of the 1991 Acquisition Research Symposium', *Defense Systems Management College*, Fort Belvoir, VA, pp. 257–66.
- Cioffi, D.F. 2005, 'A tool for managing projects: an analytic parameterisation of the S-curve', *International Journal of Project Management*, vol. 23, pp. 215–22. <https://doi.org/10.1016/j.ijproman.2004.08.001>
- Cioffi, D.F. 2006a, 'Designing project management: a scientific notation and an improved formalism for earned value calculations', *International Journal of Project Management*, vol. 24, pp. 136–44. <https://doi.org/10.1016/j.ijproman.2005.07.003>
- Cioffi, D.F. 2006b, 'Subject expertise, management effectiveness, and the newness of a project: the creation of the Oxford English Dictionary', *Project Management Institute Research Conference*, Project Management Institute, Montreal, Canada.
- Colina, J. & Vanhoucke, M. 2015, 'A comparison of the performance of various project control methods using earned value management systems', *Expert Systems with Applications*, vol. 6, no. 15: pp. 3159–75. <https://doi.org/10.1016/j.eswa.2014.12.007>

- Elshaer, R. 2013, 'Impact of sensitivity information on the prediction of project's duration using Earned Schedule method', *International Journal of Project Management*, vol. 31, no. 4: pp. 579–88. <https://doi.org/10.1016/j.ijproman.2012.10.006>
- Evensmo, J. & Karlsen, J.T. 2006, 'Earned value based forecasts-some pitfalls', *AACE International Transactions*, vol. EV6, pp. 1–5.
- Jacob, D. & Kane, M. 2004, 'Forecasting schedule completion using earned value metrics revisited', *The Measurable News (Summer)*, no. 1, pp. 11–17.
- Khamooshi, H. & Golafshani, H. 2014, 'EDM: earned duration management, a new approach to schedule performance management and measurement', *International Journal of Project Management*, vol. 32, no. 6: pp. 1019–41. <https://doi.org/10.1016/j.ijproman.2013.11.002>
- Kim, B. 2007, Forecasting project progress and early warning of project overruns with probabilistic methods, PhD thesis, Texas A&M University.
- Kim, B. & Kim, H. 2014, 'Sensitivity of earned value schedule forecasting to S-curve patterns', *Journal of Construction Engineering and Management*, vol. 140, no. 7: pp. 4014–23. [https://doi.org/10.1061/\(ASCE\)CO.1943-7862.0000856](https://doi.org/10.1061/(ASCE)CO.1943-7862.0000856)
- Lipke, W. 2003, 'Schedule is different', *The Measurable News*, (Summer), pp. 31–4.
- Lipke, W. 2010, *Earned schedule*, Lulu (R) Publishing, Lexington, KY.
- Lipke, W., Zwikael, O., Henderson, K. & Anbari, F. 2009, 'Prediction of project outcome. The application of statistical methods to Earned Value Management and Earned Schedule performance indexes', *International Journal of Project Management*, vol. 27, pp. 400–7.
- Narbaev, T. & DeMarco, A. 2014a, 'Combination of growth model and earned schedule to forecast project cost at completion', *Journal of Construction Engineering and Management*, vol. 140, no. 1: p. 04013038. [https://doi.org/10.1061/\(ASCE\)CO.1943-7862.0000783](https://doi.org/10.1061/(ASCE)CO.1943-7862.0000783)
- Narbaev, T. & DeMarco, A. 2014b, 'An earned schedule-based regression model to improve cost estimate at completion', *International Journal of Project Management*, vol. 32, no. 6: pp. 1007–18. <https://doi.org/10.1016/j.ijproman.2013.12.005>
- Project Management Institute (PMI) 2011, *Practice standard for earned value management*, 2nd edn, PMI, Newtown Square, PA.
- Project Management Institute (PMI) 2013, *A guide to the project management body of knowledge (PMBOK (R) Guide)*, 5th edn, PMI, Newtown Square, PA.
- Putnam, L.H. (1978), 'A general empirical solution to the macro software sizing and estimating problem', *IEEE Transactions on Software Engineering*, vol. 4, no. 4: pp. 345–61. <https://doi.org/10.1109/tse.1978.231521>
- Teicholz, P. 1993, 'Forecasting final cost and budget of construction projects', *Journal of Computing in Civil Engineering*, vol. 7, no. 4: pp. 511–29. [https://doi.org/10.1061/\(ASCE\)0887-3801\(1993\)7:4\(511\)](https://doi.org/10.1061/(ASCE)0887-3801(1993)7:4(511))
- Trahan, E. 2009, *An evaluation of growth models as predictive tools for estimates at completion*, master's thesis, Air Force Institute of Technology, Wright-Patterson AFB, OH.
- Vanhoucke, M. 2012, 'Measuring the efficiency of project control using fictitious and empirical project data', *International Journal of Project Management*, vol. 30, no. 2: pp. 252–63. <https://doi.org/10.1016/j.ijproman.2011.05.006>

- Vanhoucke, M. & Vandevorode, S. 2007, 'A simulation and evaluation of earned value metrics to forecast the project duration', *Journal of the Operational Research Society*, vol. 58, pp. 1361–74. <https://doi.org/10.1057/palgrave.jors.2602296>
- Warburton, R.D.H. 2011, 'A time-dependent earned value model for software projects', *International Journal of Project Management*, vol. 29, pp. 1082–90. <https://doi.org/10.1016/j.ijproman.2011.02.008>
- Warburton, R.D.H. 2014, 'A new schedule estimation technique for construction projects', *Organization, Technology and Management in Construction, An International Journal*, vol. 6, no. 3: pp. 1075–82. <https://doi.org/10.5592/otmcj.2014.3.1>
- Warburton, R.D.H. & Cioffi, D.F. 2016, 'Estimating a project's earned and final duration', *International Journal of Project Management*, vol. 34, 1493–1504. <https://doi.org/10.1016/j.ijproman.2016.08.007>
- Zwikael, O., Globerson, S. & Raz, T. 2000, 'Evaluation of models for forecasting the final cost of a project', *Project Management Journal*, vol. 31, no. 1: pp. 53–7.

About the Authors



Giulia Nannini earned her master degree in Engineering&Management from Politecnico di Torino with a dissertation in cost and schedule nonlinear estimates at completion. She works at KPMG as a consultant in supply chain and operations management.



Roger Warburton, PhD, is an Associate Professor Emeritus. He teaches courses in supply chain management and project management in U.S. and Europe and conducts research in project management, having developed a model for including time dependence into Earned Value Management, to determine project costs and schedules early in their life. Previously, Warburton was the MIS director for Griffin Manufacturing and vice president of the Software Technology Division of Jaycor, directing the technical analysis of very large information systems.



Alberto De Marco, PhD, is an Associate Professor. He teaches project management and operations management at various international institutions. He's been Visiting Professor at the Tongji University in Shanghai and the Massachusetts Institute of Technology. His research activities are in the areas of construction project management, project control and public-private partnership for infrastructure and service projects.