

Annexes

*Original*

Annexes / Battistoni, Chiara; GIRALDO NOHRA, Carolina. - STAMPA. - Systemic Design Method Guide for Policymaking: a Circular Europe on the way. Volume 1:(2017), pp. 145-177.

*Availability:*

This version is available at: 11583/2696472 since: 2018-01-10T11:46:31Z

*Publisher:*

Umberto Allemandi

*Published*

DOI:

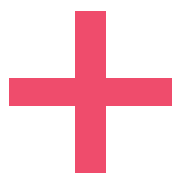
*Terms of use:*

This article is made available under terms and conditions as specified in the corresponding bibliographic description in the repository

*Publisher copyright*

(Article begins on next page)

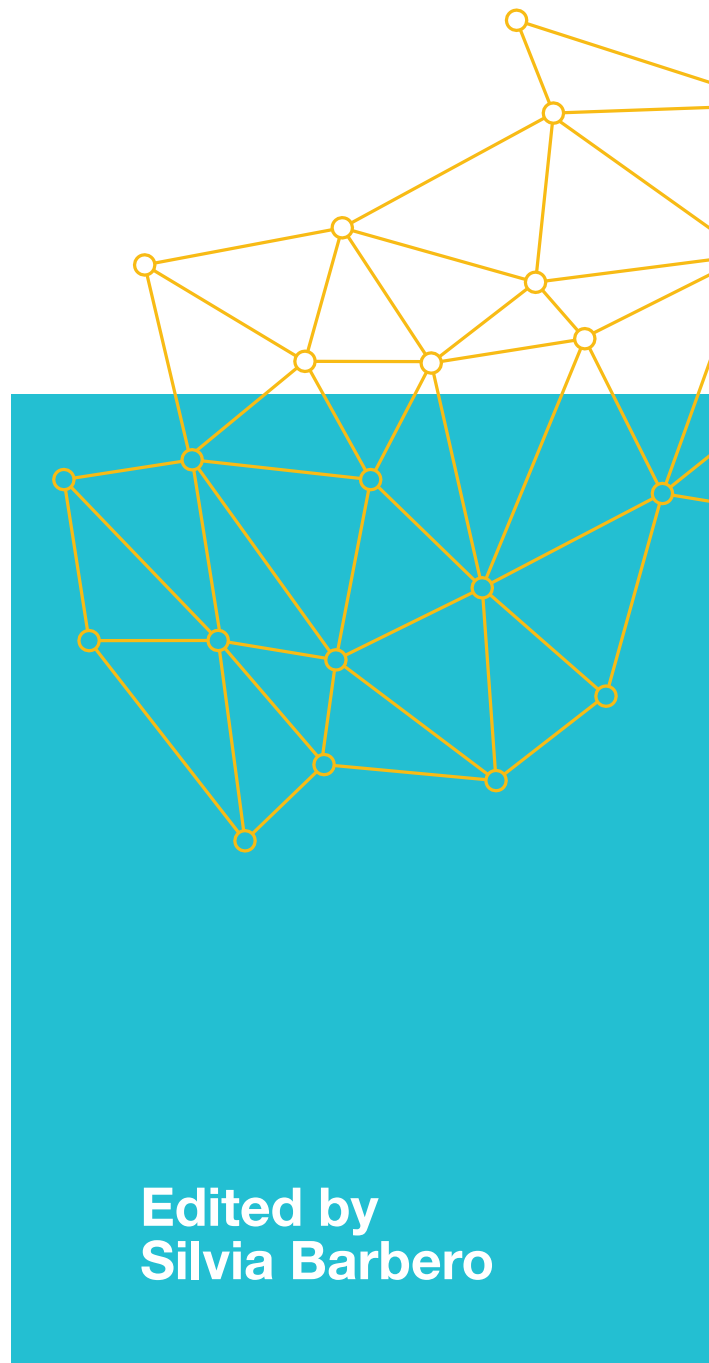
# retrace



## Systemic Design Method Guide for Policymaking:

A Circular Europe  
on the Way

volume 1



Edited by  
Silvia Barbero

Allemandi



SYSTEMIC DESIGN  
METHOD GUIDE  
FOR POLICYMAKING  
*A Circular Europe on the Way*

EDITED BY  
SILVIA BARBERO

Allemandi

# SYSTEMIC DESIGN METHOD GUIDE FOR POLICYMAKING: A CIRCULAR EUROPE ON THE WAY

*Edited by*

Silvia Barbero

*Preface by*

Erwin Siweris

*RETRACE Coordinator*

Politecnico di Torino (Italy)

*RETRACE Partners*

Piedmont Region (Italy)

Azaro Foundation (Spain)

Beaz Bizkaia (Spain)

Higher School of Advanced Industrial Technology / ESTIA (France)

Association for Environment and Safety in Aquitaine / APESA (France)

Government Office for Development and European Cohesion Policy (Slovenia)

North-East Regional Development Agency (Romania)



*Chief Editor*

Silvia Barbero

*Assistant Editor*

Carolina Giraldo Nohra

*Authors*

Jocelyn Bailey

Cyril Baldacchino

Silvia Barbero

Chiara Battistoni

Luigi Bistagnino

Emanuele Bompan

Daniel Calleja Crespo

Tiziana Dell'Olmo

Marjana Dermelj

Carolina Giraldo Nohra

Jean-Michel Larrasquet

Iban Lizarralde

Ander Muñoz Urbizu

Agnese Pallaro

Pier Paolo Peruccio

Estibaliz Plaza Elordi

Marion Real

Ramona Tanasã

Paolo Tamborrini

Benjamin Tyl

*Cover Design*

Carolina Giraldo Nohra

*Annexes Design*

Chiara Battistoni

Carolina Giraldo Nohra

First Edition

ISBN 978-88-422-2444-0

© 2017 BY RETRACE PROJECT

© 2017 UMBERTO ALLEMANDI SRL

PRINTED IN TURÍN IN THE MONTH OF SEPTEMBER 2017  
FOR THE UMBERTO ALLEMANDI PUBLISHING HOUSE

All rights reserved

No part of this publication may be reproduced in any manner without permission.

This publication is possible thanks to the support of Interreg Europe and the European Regional Development Fund (ERDF) in the RETRACE Project.

[www.interregeurope.eu/retrace](http://www.interregeurope.eu/retrace)

This publication reflects the authors' views only and the Interreg Europe programme authorities are not liable for any use that may be made of the information contained therein.

# Table of Contents

9	Introduction SILVIA BARBERO
	<b>1. Transition Towards a Circular Economy</b>
14	1.1 The Circular Economy Package. Beginning of the Transition towards a more Circular Economy DANIEL CALLEJA CRESPO
16	1.2 Circular Economy: Definition and Evolution. Principles and Development EMANUELE BOMPAN
24	1.3 The Transition of European Countries Toward a New Economy and the Role of Regions TIZIANA DELL'OLMO
35	1.4 Evolution of Interreg Europe Projects on Circular Economy MARJANA DERMELJ
43	1.5 Elements of Novelty: Designer as Policy-Maker JOCELYN BAILEY
51	1.6 Sustainable and Collaborative Innovation for the Territory PAOLO TAMBORRINI
	<b>2. Systemic Design: A Tool for An Emerging Sustainable Future</b>
58	2.1 A Complementary View on Complex and Systemic Approaches MARION REAL, JEAN MICHEL LARRASQUET AND IBAN LIZARRALDE

68	2.2	Systemic Design: A Historical Perspective PIER PAOLO PERUCCIO
75	2.3	Systemic Design: Methodology and Principles LUIGI BISTAGNINO
83	2.4	Systemic Design as Effective Methodology for the Transition to Circular Economy SILVIA BARBERO
	3.	The RETRACE Project
92	3.1	Overview of the RETRACE Project RAMONA TANASĂ
101	3.2	Involved Actors CYRIL BALDACCHINO AND BENJAMIN TYL
	4.	The Methodology of the RETRACE Project
112	4.1	Exchange of Experiences CHIARA BATTISTONI, CAROLINA GIRALDO NOHRA, AGNESE PALLARO AND ANDER MUÑOZ URBIZU
135	4.2	Communication and Dissemination ESTIBALIZ PLAZA ELORDI, MARION REAL AND MIKELE LARRONDE
140		Conclusion SILVIA BARBERO
143		Annexes
179		Glossary
185		Authors' Biographies

# Annexes



Italy

# PIEDMONT



TOTAL AREA: **2.538.700 ha**  
2010



Mountains **43,3%**

Hills **30,3%**

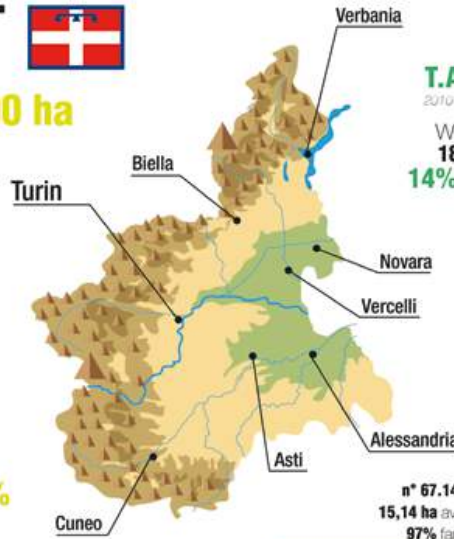
Flat area **26,4%**

Artificial area: **183.082 ha** 7%



## geography

T.A.A (Total Agricultural Area): **1.299.007 ha** 51%  
2010

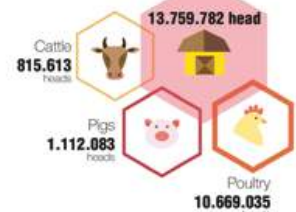
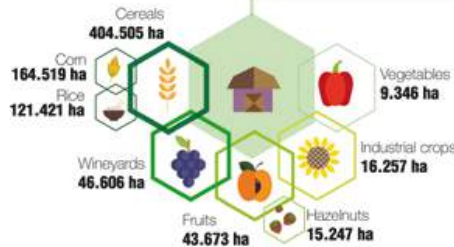


Agriculture area (U.A.A.): **1.013.157 ha** 78%

Area for pasture **371.350 ha**

n° 67.148 Crop Farms  
15,14 ha average (U.A.A)  
97% family managed

n° 19.724 Breeding Farms  
n° 52 head average  
97% family managed



Italy

# PIEDMONT

Population (inhabitants)  
**4.424.467**  
2015

density of population  
**171,8** hab/kmq  
2011



## demography

family composition

**2,2** Average number of people in a family  
2013

TOTAL FAMILY UNITS **1.953.360**  
2011

MAIN CATEGORIES

**591.709** **246.850**

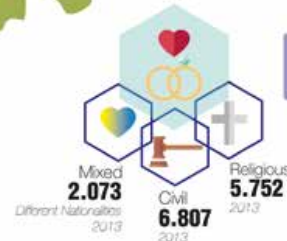


**374.659** **671.901**

marriage

Marriages **12.599**  
2013

Divorces and separation **12.152**  
2012



**+0,9** Mortality variation last 30 years

**46,2** Average age of population  
2014

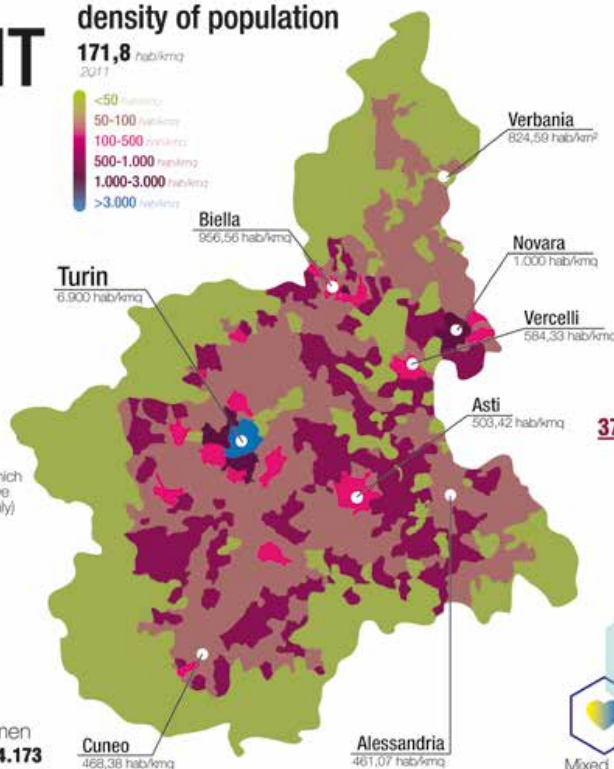
**30,1** Average age at which young people leave parents' house (Italy)

**-0,3** Nativity variation last 30 years

**152** Child adoption  
2013

Men **2.140.294**  
2015

Women **2.284.173**  
2015



# Italy PIEDMONT

## demography

### employment

Variation of total employment rate  
Working age 20-64



Variation of total unemployment rate  
Working age



1.347.299 employees  
2013



Average income per year

23.616 €  
2011



Average income per age - ITALY  
2015 (median equivalized net)

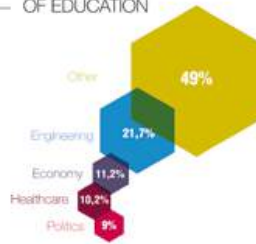


### education

SCHOOLING RATE  
41%  
2013



VOCATION OF EDUCATION



NUMBER OF EDUCATION LEVELS & UNITS



### migration

Rate of Emigration  
+ 4,4 %  
last 30 years



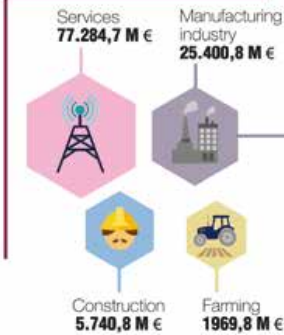
Rate of Immigration  
+ 5 %  
last 30 years



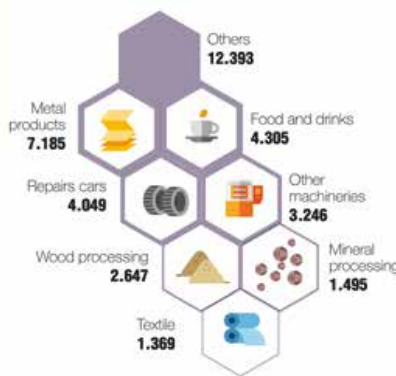
# Italy PIEDMONT

## economy

MAIN ECONOMIC / INDUSTRIAL SECTORS

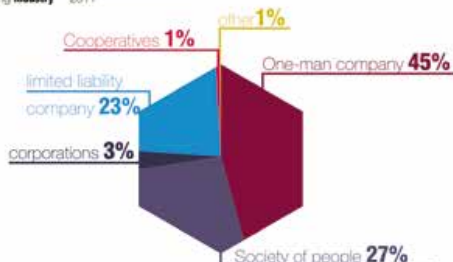


MANUFACTURING INDUSTRY 36.689 UNIT



INTERNAL ORGANIZATION OF INDUSTRY

Manufacturing industry 2011



NUMBER OF INDUSTRIES  
MANUFACTURING SECTORS 2011

EMPLOYEES

1-15	Micro	34.177
15-49	Small	2.678
50-249	Medium	1.013
+250	Large	156

NUMBER OF EMPLOYEES  
MANUFACTURING SECTORS 2011

1-15	114.904
15-49	71.161
50-249	99.237
+250	105.659

# Italy PIEDMONT

## influences



## culture

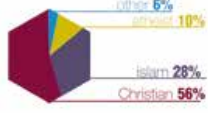
### traditions by season



### languages



### religion



### sport



### notable residents

#### industrial- politician- religious



### folklore

#### instruments



#### authors - musician- artist



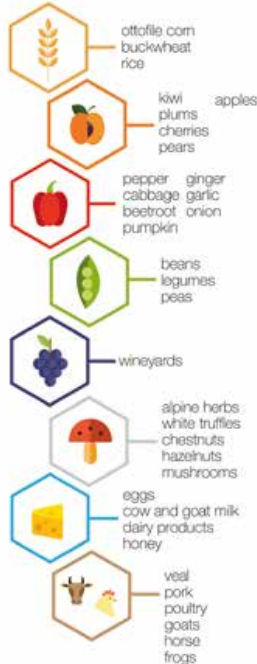
#### dances



# Italy PIEDMONT

## culture gastronomy

### food resources



### traditions

MERENDA SINOIRA (afternoon snack):  
bread  
salami  
cheese  
fruit  
wine



### recipes



Italy

# PIEDMONT

architecture  
styles/  
urban patterns



Landmarks



crafts



culture

craft districts



Italy

# PIEDMONT

## Torino 1st main city

foundation by Romans  
Taurasia  
III century B.C.

1st capital of Italy  
in 1861-1865

1280  
part of Savoy  
County

romanic colony  
by Augusto  
Augusta Taurinorum  
in I century B.C.

Middle Ages  
center of  
Longobardo Duchy

**890.529**  
2015

**population**

Women  
**466.848**

Men  
**423.681**

Immigrants  
rate **81,5**

universities

**2**  
University of Torino  
Politecnico di Torino

economic sectors  
2013



urban centres

**326.214**  
employees

cultural events



main infrastructures



churches  
catholics



# Italy PIEDMONT Novara

2nd city of Piedmont for population  
founded by Celts in **89 B.C.**

domain by:  
Romans;  
Longobard;  
Visconti; Sforza;  
Habsburg Empire;  
Savoia; Austrian

Located between Vercelli and Milano

**104.380**  
2015  
population



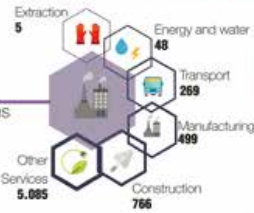
## universities

**1** university pole  
Perrone



## economic sectors 2013

**8.668**  
Companies



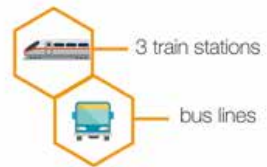
## urban centres

**32.053**  
employees

## cultural events

Novara Carnival February

## main infrastructures



## churches catholics

# Italy PIEDMONT Alessandria

long siege by imperial forces  
Founded in **XII century**

domain by:  
Romans;  
Visconti,  
Milano duchy;  
French; Austrian;  
Savoia

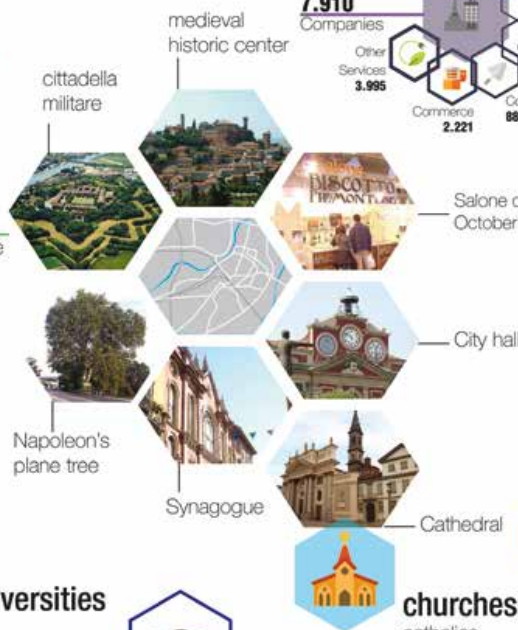
battle of Marengo  
strategic position:  
at the center of triangle  
Torino-Milano-Genova

**93.943**  
2015  
population



## universities

**2**  
Piemonte orientale  
Politecnico di Torino



## economic sectors 2013

**7.910**  
Companies



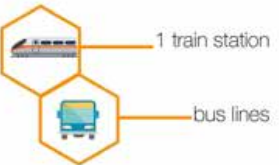
## urban centres

**29.385**  
employees

## cultural events

Salone del Biscotto October

## main infrastructures



## churches catholics

# Italy PIEDMONT Asti

Founded by Romans  
1935 detached from Alessandria province

domain by: Romans; Longobard; Napoli; Orleans; Savoia  
in the middle of wine hills, heart of Piedmont

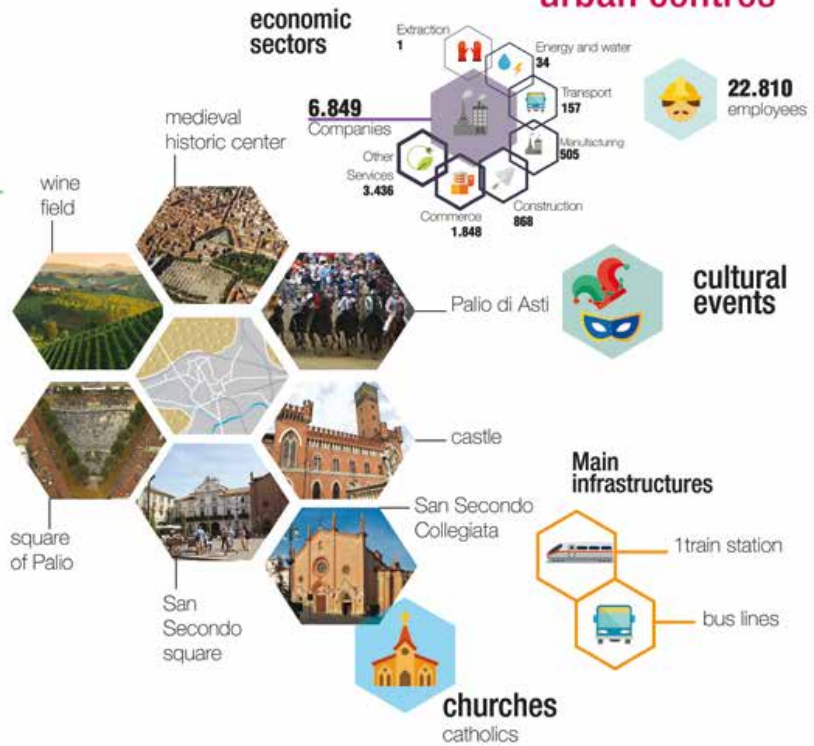
## population

76.202 (2015)

Women 39.887

Men 36.315

Immigrants rate 103.7



# Italy PIEDMONT Cuneo

come from carolingia city Auriate  
Partisan center  
was capital of 'piemonte provenzale'

domain by: Angioini; Romans; Visconti; Savoia; French-spanish

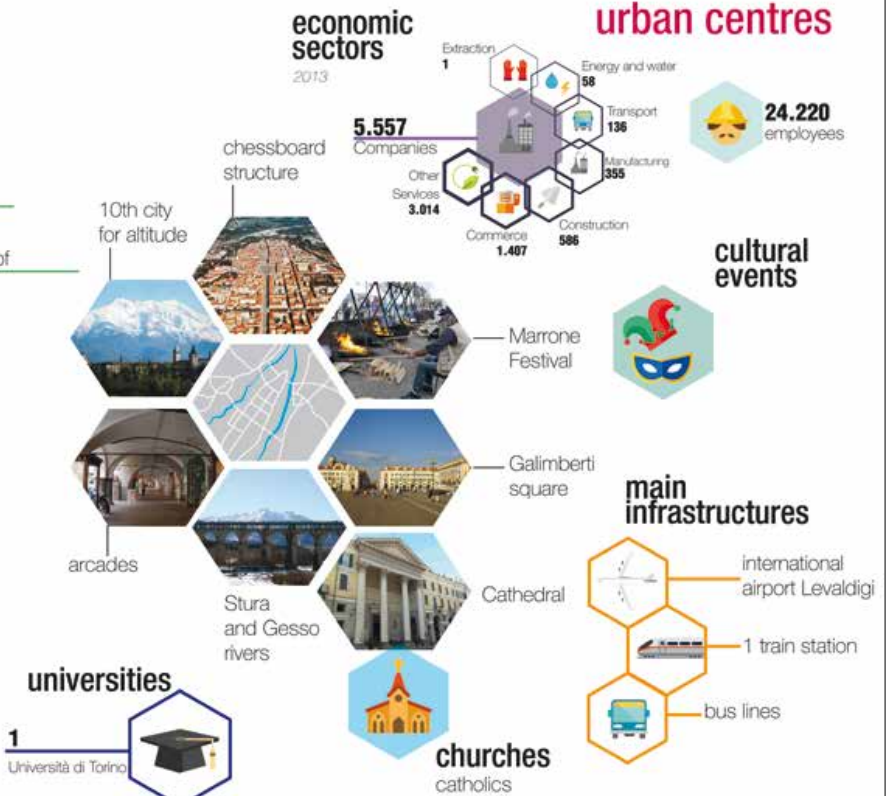
## population

56.081 (2015)

Women 29.273

Men 26.808

Immigrants rate 91.8



# Italy PIEDMONT Vercelli

founded by Celts,  
Wehr-Celt

stop on the way  
of via francigena

domain by:  
Romans;  
longobard;  
Visconti;  
Savoia;  
Spanish

European  
capital of rice

**46.754**  
2015

population



Immigrants  
rate **72,2**

universities

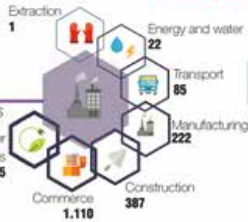
1 Piemonte orientale



economic  
sectors  
2013

**3.902**  
Companies

Other  
Services  
**2.075**



urban centres

**12.277**  
employees

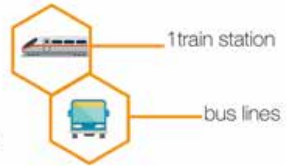


cultural  
events



La Panissa vercellese  
Sagra d'la Panissa

main  
infrastructures

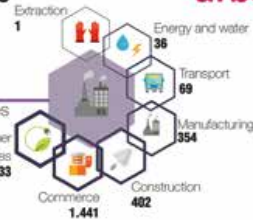


churches  
catholics

economic  
sectors  
2013

**5.536**  
Companies

Other  
Services  
**3.233**



urban centres

**18.759**  
employees

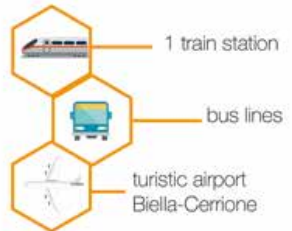


cultural  
events



Biella Festival Autori  
October

main  
infrastructures



churches  
catholics

# Italy PIEDMONT Biella

Foundation  
**826**

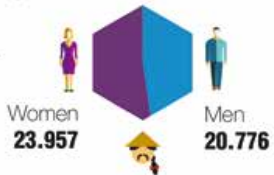
important place  
for the industrial  
revolution after  
the war with Piaggio

domain by:  
Romans;  
Longobards,  
French;  
Savoia

First modern  
wool factory

**44.733**  
2015

population



Immigrants  
rate **52,6**

universities

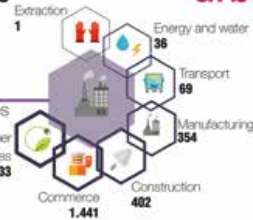
1 campus  
University of Turin  
Politecnico di Torino  
Università del Piemonte Orientale



economic  
sectors  
2013

**5.536**  
Companies

Other  
Services  
**3.233**



urban centres

**18.759**  
employees

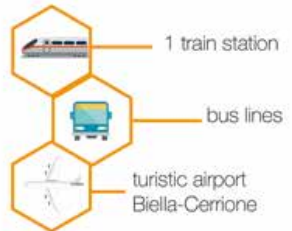


cultural  
events



Biella Festival Autori  
October

main  
infrastructures



churches  
catholics

# Italy PIEDMONT Verbania

created in **1939**,  
from the  
merger of  
Intra+Pallanza

the garden  
on the lake

In **1944**, massacre  
of 44 partisans

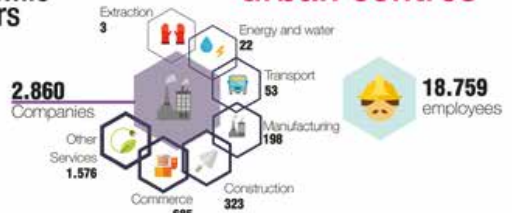
**30.961**  
2015

population



economic  
sectors  
2013

urban centres



**18.759**  
employees

view to the  
lake Maggiore

City hall

LetterAItura  
June

cultural  
events

botanic  
garden  
Villa Taranto

main  
infrastructures

Museo del  
paesaggio

train stations

Borromeo  
Palace

San Remigio  
church

bus lines



churches  
catholics

# PIEDMONT Italy

## bibliography /webography

consultation date: from september 2016 to december 2016

### geography

Regione Piemonte (2015). Montebaggio del consumo di suolo in Piemonte. Torino: Regione Piemonte. Retrieved from: <http://www.regione.piemonte.it>

[www.wikipedia.it](http://www.wikipedia.it)  
[www.visitpiemonte.it](http://www.visitpiemonte.it)

### demography

[www.istat.it/piemonte](http://www.istat.it/piemonte)  
[www.demos.piemonte.it](http://www.demos.piemonte.it)  
[www.comuni-italiani.it](http://www.comuni-italiani.it)  
[www.piemonteinfo.it](http://www.piemonteinfo.it)  
[www.rup.piemonte.it](http://www.rup.piemonte.it)  
<http://appello.eurostat.ec.europa.eu>  
<http://dat.istat.it>  
<http://datcom.piemonte.it/dati-e-statistiche/istat/annuario-2014-2015>  
[www.istat.it/it/nuovi-media/di-uscita/di-uscita](http://www.istat.it/it/nuovi-media/di-uscita/di-uscita)

Commissione per le adozioni internazionali (2014) Dati e prospettive nelle adozioni internazionali, dal 1° gennaio al 31 dicembre 2013. Retrieved from: <http://www.commissioneadozioni.it>

Istat (2013). L'Italia del censimento: risultati demografici e processo di rilevazione. Piemonte. Roma: Istat. Retrieved from: [www.istat.it](http://www.istat.it)

Istat (2016). Osservatorio Istruzione e Formazione professionale. Piemonte 2015. Torino: Istat. Retrieved from: <http://www.istat.it/piemonte>

Ricucci R. (2015). Piemonte. Rapporto Immigrazione 2014. In: Uner (2015). Dossier statistico Immigrazione 2014. Retrieved from: [www.piemonteimmigrazione.it](http://www.piemonteimmigrazione.it)

Map: Reproduction of the map retrieved from <http://relazioneambiente.piemonte-gov.it/2015/05/area-protetta/riserva-qualita/>

### economy

database Asis from Istat, national institute of statistics (<http://www.istat.it/piemonte>)  
data from chamber of commerce ([www.c.ciaaconf.it](http://www.c.ciaaconf.it))  
data from Piedmont Region and regional clusters

<http://www.istat.it/piemonte>  
<http://dat-commerciodiindustrie/istat/Mybusiness>

### culture

Bioffo A. (1947). Stazioni Piemontesi. Torino: Prati e Valenzani edit.  
Barbero A. (2008). Storia del Piemonte. Torino: Einaudi.  
Dei Noce F., Geronzi R., Massaroni P., Mavale S., Pacini D. (2008). Il Piemonte dal 1945 al 2008. Museo ed. Istat (2015). Raport: appartenimento e analisi regionale fra i cittadini stranieri. Retrieved from: <http://www.istat.it/piemonte>  
Regione Piemonte (2006). Piemonte. Torino: Regione Piemonte.  
Ruggiero C., Dellacasa E., Monardi G. (a cura di) (2007). Il Piemonte architettonico e ambientale. Torino: Casa Scenari&design per i beni archeologici del Piemonte (2003). Archivi Sapori. Torino.

[www.sapori.it](http://www.sapori.it)  
<https://it.wikipedia.org/wiki/Piemonte>  
[www.piemontetour.it](http://www.piemontetour.it)  
[www.sapori.it](http://www.sapori.it)  
<http://torinonavigio.atenvisio.org/danze-piemontesi.html>  
[www.mond.it](http://www.mond.it)  
[www.piemontetour.it](http://www.piemontetour.it)  
[www.youtube.com](http://www.youtube.com)  
[www.piemontetourbook.it](http://www.piemontetourbook.it)  
[www.piemontetourbook.it](http://www.piemontetourbook.it)  
[www.istat.it](http://www.istat.it)  
[www.sapori.it](http://www.sapori.it)  
[www.piemontetourbook.it](http://www.piemontetourbook.it)  
[www.regione.piemonte.it](http://www.regione.piemonte.it)  
[www.osservatorioagricoltura.it](http://www.osservatorioagricoltura.it)

### urban centers

database Asis from Istat, national institute of statistics (<http://www.istat.it/piemonte>)  
data received from chamber of commerce

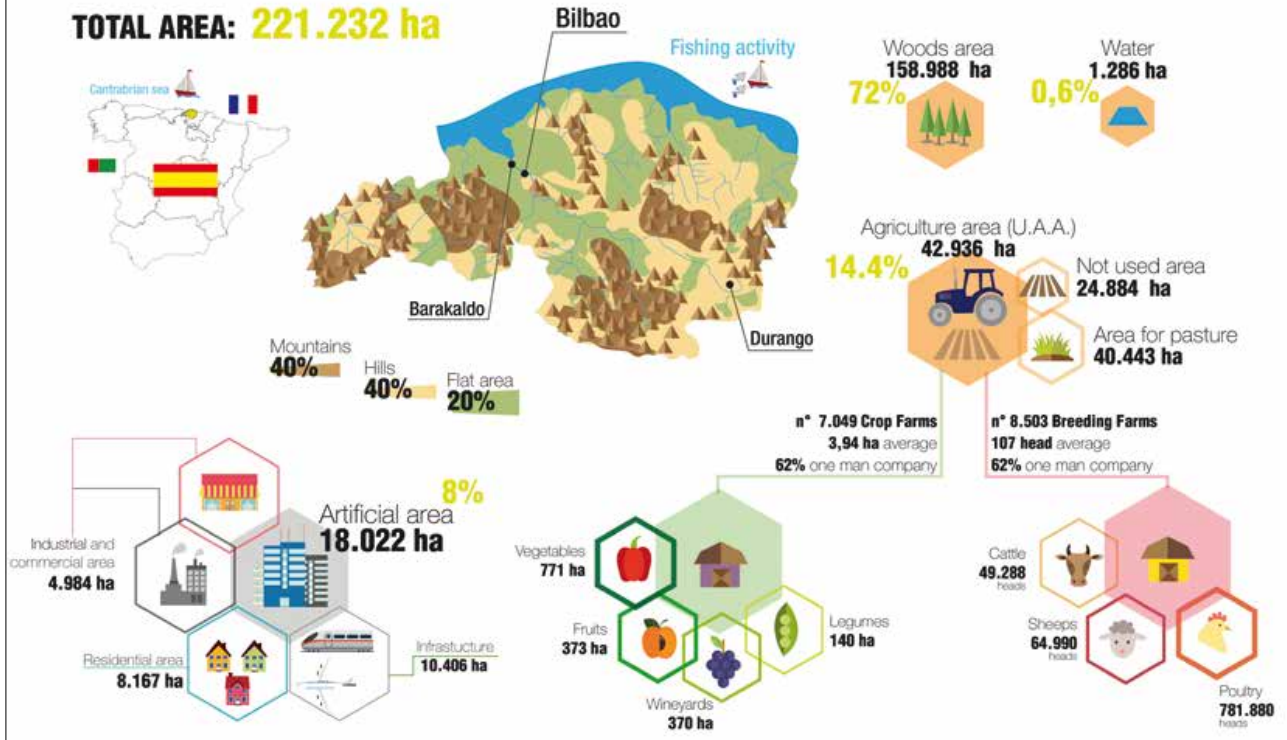
[www.wikipedia.it](http://www.wikipedia.it)  
<http://piemonte.it/regione/la-regione>  
[www.turistica.it](http://www.turistica.it)  
[www.rup.piemonte.it](http://www.rup.piemonte.it)

Spain - Basque Country

# BISCAY

TOTAL AREA: **221.232 ha**

## geography



Spain - Basque Country

# BISCAY

Population (inhabitants)

**1.141.442**

2015

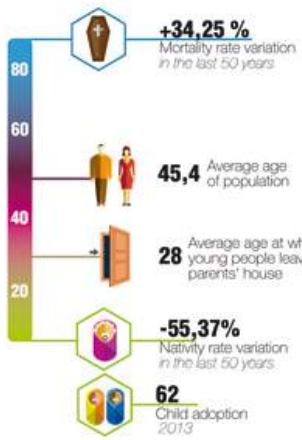
## density of population

**515,36** hab/kmq  
2015



## Bilbao demography

**8.331,11** hab/kmq



Men **549.984** 2015

Women **591.458** 2015

## family composition

**-5,9** Average number of people in a family variation in the last 50

TOTAL FAMILY UNITS **551.600**

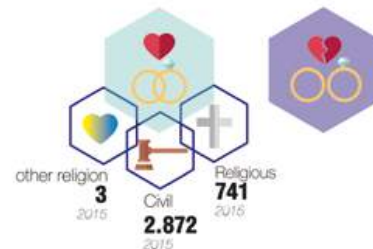
MAIN CATEGORIES



## marriage

Marriages **3.616** 2015

Divorces **1.764** 2013



# Spain - Basque Country BISCAY

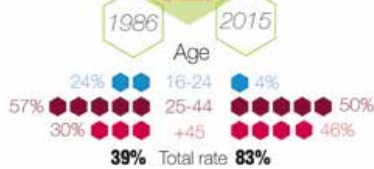
## demography

### employment

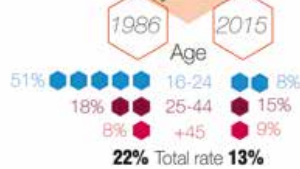
463.009 employees 2015



Variation of total employment Working age



Variation of total unemployment Working age



Average income / Month per job type



Average income per Age 2013

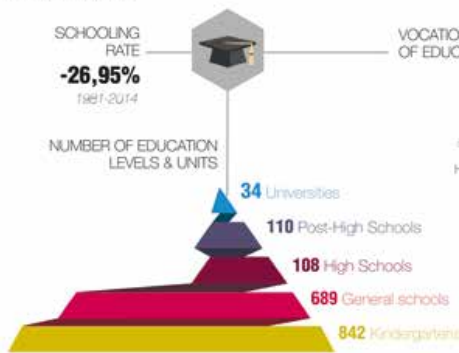


### education

SCHOOLING RATE

-26,95% 1981-2014

NUMBER OF EDUCATION LEVELS & UNITS

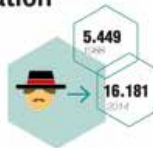


VOCATION OF EDUCATION



### migration

Rate of Emigration +197% last 30 years



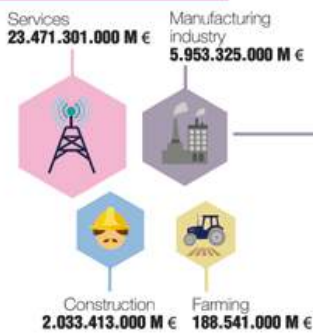
Rate of Immigration +511% last 30 years



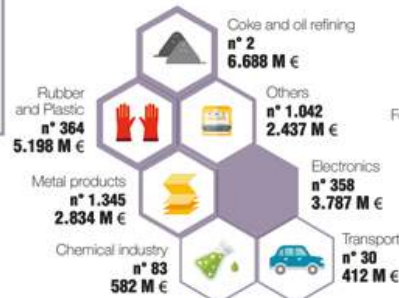
# Spain - Basque Country BISCAY

## economy

MAIN ECONOMIC / INDUSTRIAL SECTORS



MANUFACTURING INDUSTRY 80.321 UNIT



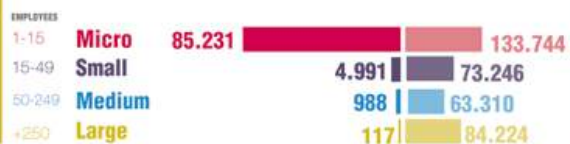
INTERNAL ORGANIZATION OF INDUSTRY

Manufacturing industry 2015



NUMBER OF INDUSTRIES

MANUFACTURING SECTORS 2015



# Spain - Basque Country BISCAY

## influences



## culture

### traditions by season

**spring** - Easter Catholics processions

**summer** - Nostalgic Basque Urban Street Juggling Shows

**autumn** - All Saints' Day

**winter** - Visit a giant nativity scene  
- Christmas  
- New Year's Eve  
- January 5 Three Kings Parties

### languages



### religion



### sport



### notable residents

#### industrialist - politician - religious

Maria López de Haro (1270-1342)

Enrique de Arceiza y Aregui (Doctor 1860-1961)

Dolores Ibárruri (Politician 1892-1989)

Unai Romentería (president of the provincial council 1973)

Casilda Iturrizar (1818-1900)

Sabino Arana (1865-1903)

Iñaki Azkuna (former mayor of Bilbao 1943-2014)

Juan Mari Aburto (1961)

### folklore

#### instruments



#### authors - musician - artist

Juan Crisóstomo de Arriaga (1829-1888)

Gabriel Aresti (1833-1875)

Valentín de Zubiaurre (1879-1963)

Igor Yerba (1924)

Miguel de Unamuno (1891-1936)

Néstor Basterrebea (1904-2014)

Agustín Ibarrola (1900)

#### dances



# Spain - Basque Country BISCAY

## culture

### food resources

- wheat, barley, corn, oats
- peaches, cherries, apples, pears
- pepper, carrot, tomato, pumpkin
- mushrooms, garlic, onion
- beans, legumes, peas
- wineyards
- sardines, anchovies, tuna, crab
- eggs, cow, sheep and goat milk, dairy products, honey
- veal, pork, poultry, goats, wild boar

### traditions

Eating pintxos at 12pm going from a bar to another bar.



### recipes

3 STAR Michelin Guide destination

Goxua

porusalda soup

cider

marmitakoi stew

pintxos

Piperade



Spain - Basque Country

# BISCAY

## architecture



## museums

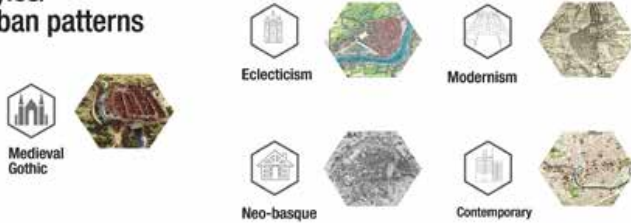
Guggenheim Museum Bilbao  
Bilbao Fine Arts Museum  
the Basque Museum  
Bilbao River Maritime Museum  
Archaeological Museum of Bizkaia

## crafts



## culture

## styles/ urban patterns



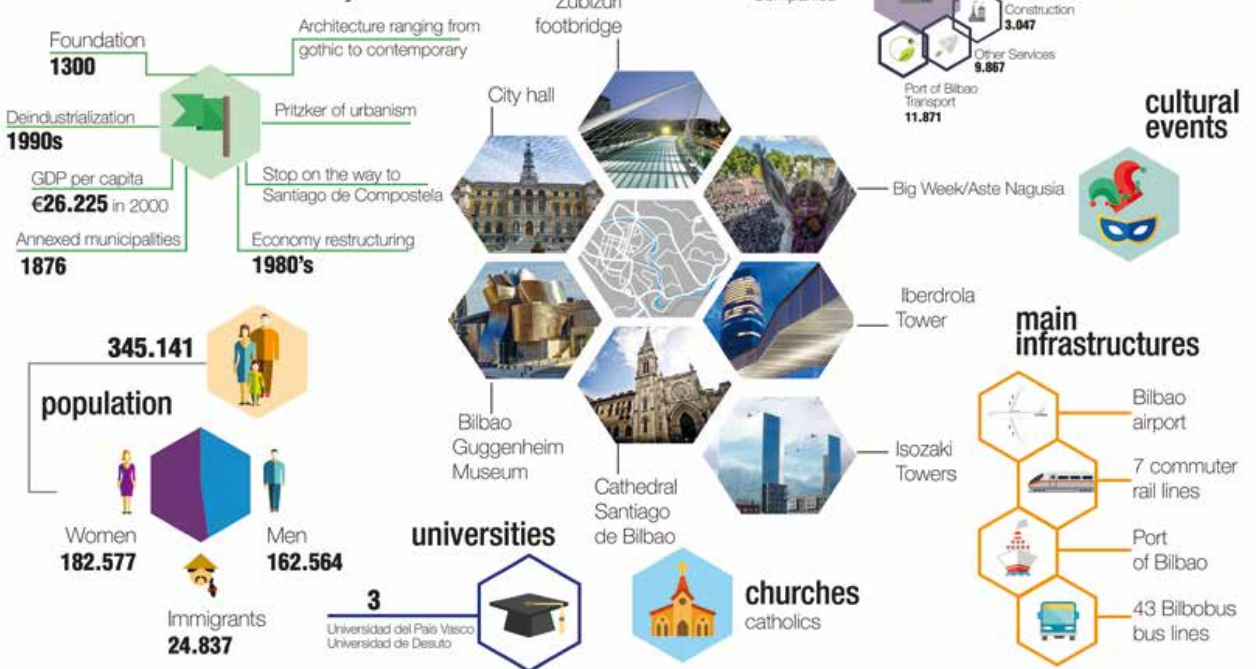
## craft districts



Spain - Basque Country

# BISCAY

## Bilbao 1st main city



Spain - Basque Country

# BISCAY

## Barakaldo 2nd city

Foundation  
**1051**

Industrial recession  
**1980's**

Developed  
as an endpoint  
of a mining  
railway

from industrial  
to core services town

Iron Works Business  
major economic activity  
**XIX/XX** century

**98.403**  
population



economic  
sectors

**6.902**  
Companies

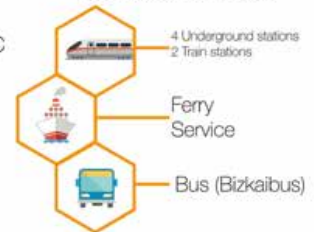


urban centres

**28.567**  
employees

cultural  
events

main  
infrastructures



Spain - Basque Country

# BISCAY

## Durango 3rd city

Foundation  
**1300**

Economy restructuring  
**1970's**

Heavy Industry  
**XIX/XX** century

Architecture  
Gothic  
Neapolitan classic  
Baroque  
Contemporary

**28.899**  
population



economic  
sectors

**1.951**  
Companies

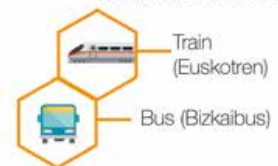


urban centres

**7.798**  
employees

cultural  
events

main  
infrastructures



# BISCAY Spain - Basque Country

## bibliography /webography

consultation date: from september 2016 to december 2016

### geography

<http://en.eustat.eus>  
<http://www.nasdap.ejgv.euskadi.eus>  
<https://en.wikipedia.org/wiki/>  
<http://www.ign.es>

### demography

map: interpretation of the map retrieved from [www.ksabarna.com](http://www.ksabarna.com)

<http://www.eustat.eus>  
<http://www.ine.es>  
<http://www.euskadi.eus>  
<http://www.elcomercio.com/bizkaia>  
<http://www.bizkaia.eu>  
<http://en.eustat.eus>  
<http://www.mecd.gob.es>

### economy

data from register of company  
<http://www.eustat.eus/temas/05>  
<http://www.bizkaialalent.eus>

### culture

<http://www.kultura.ejgv.euskadi.eus>  
<http://www.bilbaoTurismo.net>  
<https://en.wikipedia.org/>  
<http://www.euskomedia.org>  
<http://www.kultura.ejgv.euskadi.eus>  
<https://ec.europa.eu>  
<http://www.kultura.ejgv.euskadi.eus>  
<https://es.wikipedia.org>  
<http://www.bizkaialalent.eus>  
<http://www.elmundo.es>  
<http://peopleof.oureverydaylife.com>  
<http://www.bizkaialalent.eus>  
<http://www.bizkaialalent.eus>  
<http://www.bilbaoTurismo.net>

### urban centers

<http://garpen.net>  
<http://www.bilbaoTurismo.net>  
<https://es.wikipedia.org/wiki/>  
<http://www.eustat.eus>  
<http://www.durango-udsia.eus>  
<http://www.camarabilbao.com>

France

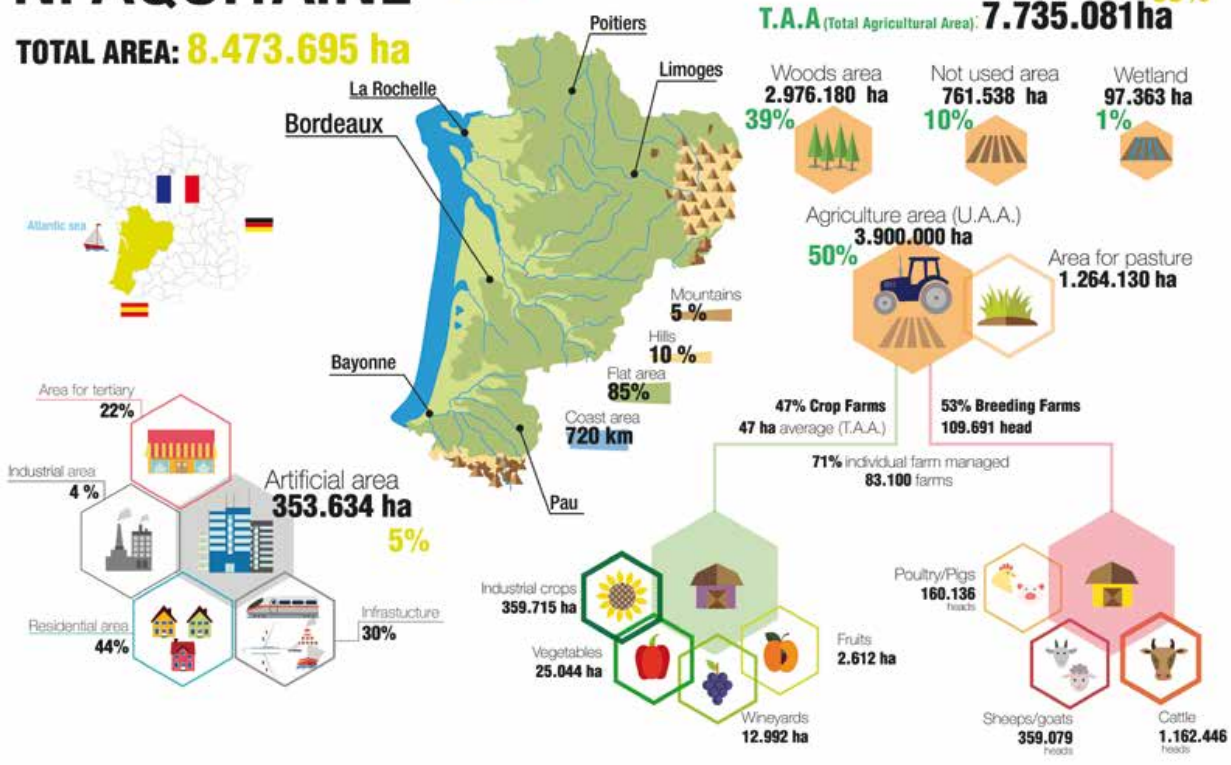
# N. AQUITAINE

RÉGION NOUVELLE-AQUITAINE

TOTAL AREA: **8.473.695 ha**

## geography

T.A.A (Total Agricultural Area): **7.735.081 ha** <sup>95%</sup>



France

# N. AQUITAINE

density of population  
70 hab/kmq

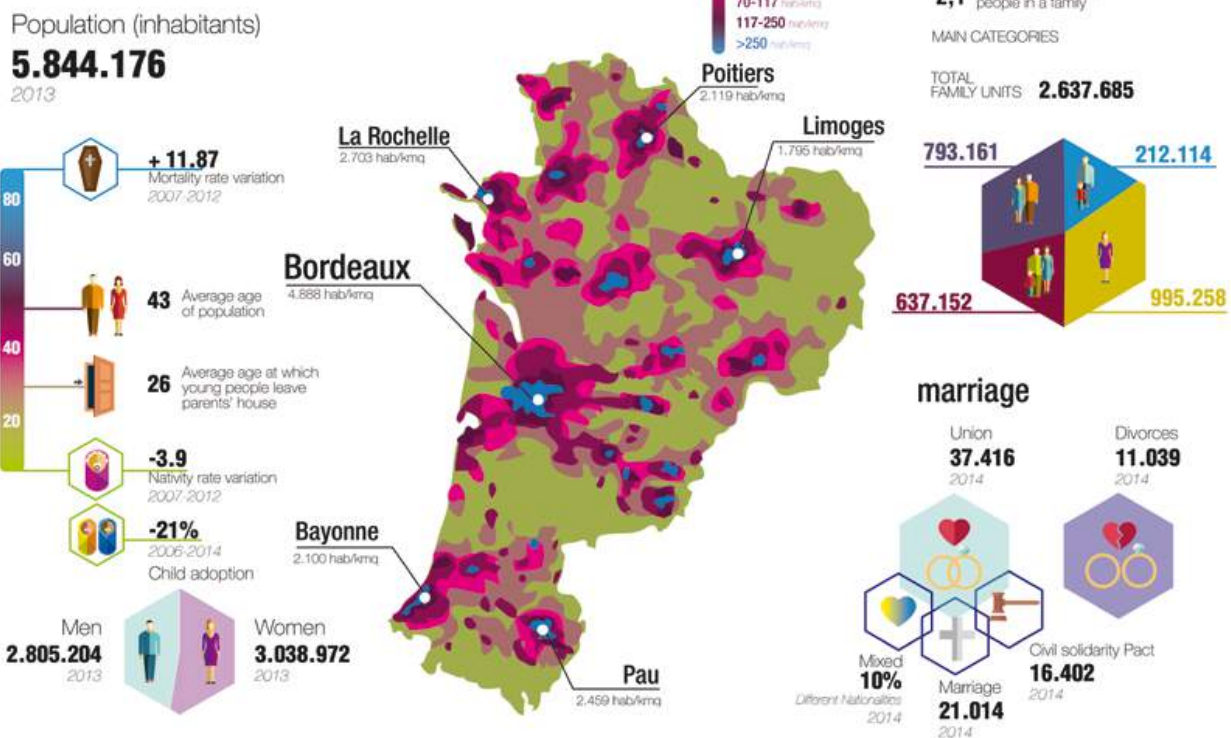
## demography

### family composition

2,1 Average number of people in a family

MAIN CATEGORIES

TOTAL FAMILY UNITS: **2.637.685**



# France N. AQUITAINE

2.345.400 employees  
2015

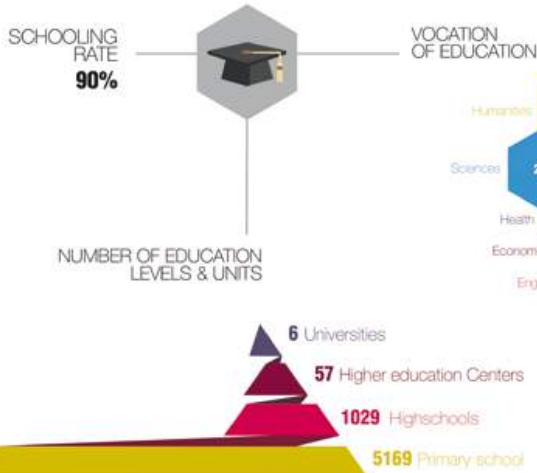


## demography

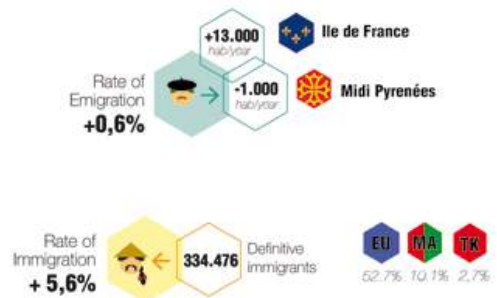
### employment



### education



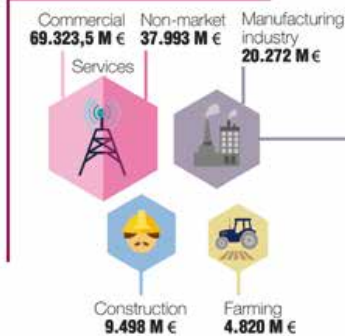
### migration



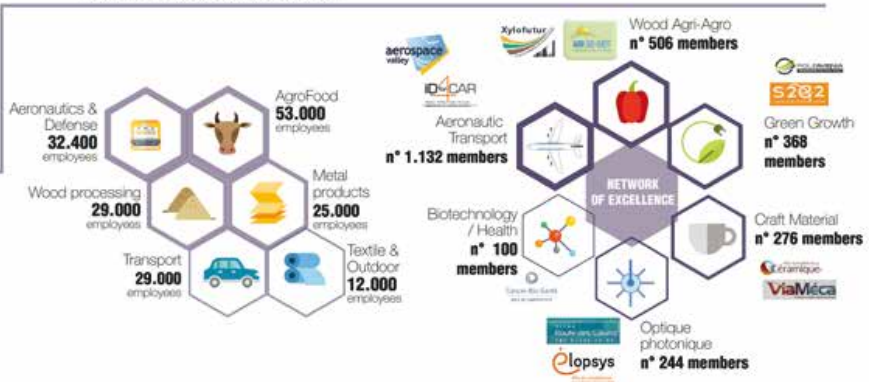
# France N. AQUITAINE

## economy

### MAIN ECONOMIC / INDUSTRIAL SECTORS

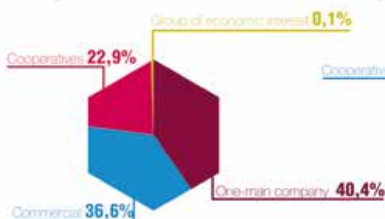


### MANUFACTURING INDUSTRY 36.898 UNIT

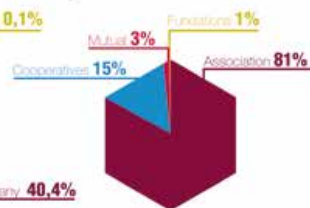


### INTERNAL ORGANIZATION OF INDUSTRY

Manufacturing Industry 2016

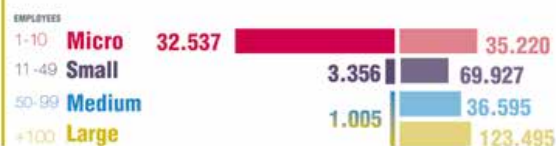


### SOCIAL ECONOMY



### NUMBER OF INDUSTRIES

Manufacturing Industry 2013



### NUMBER OF EMPLOYEES

Manufacturing Industry 2013

France

# N. AQUITAINE

influences



culture

traditions by season



languages



religion



sport



notable residents

industrialist- politician- religious



folklore

instruments



dances



authors - musician- artist

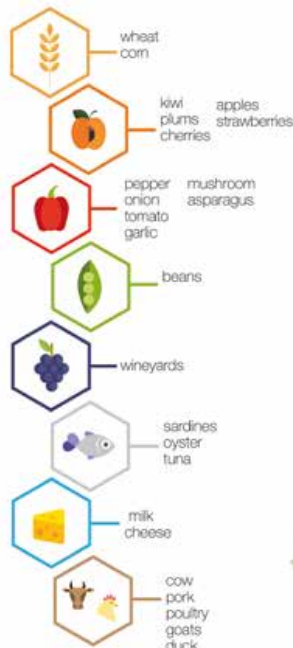


FRANCE

# N. AQUITAINE

culture gastronomy

food resources



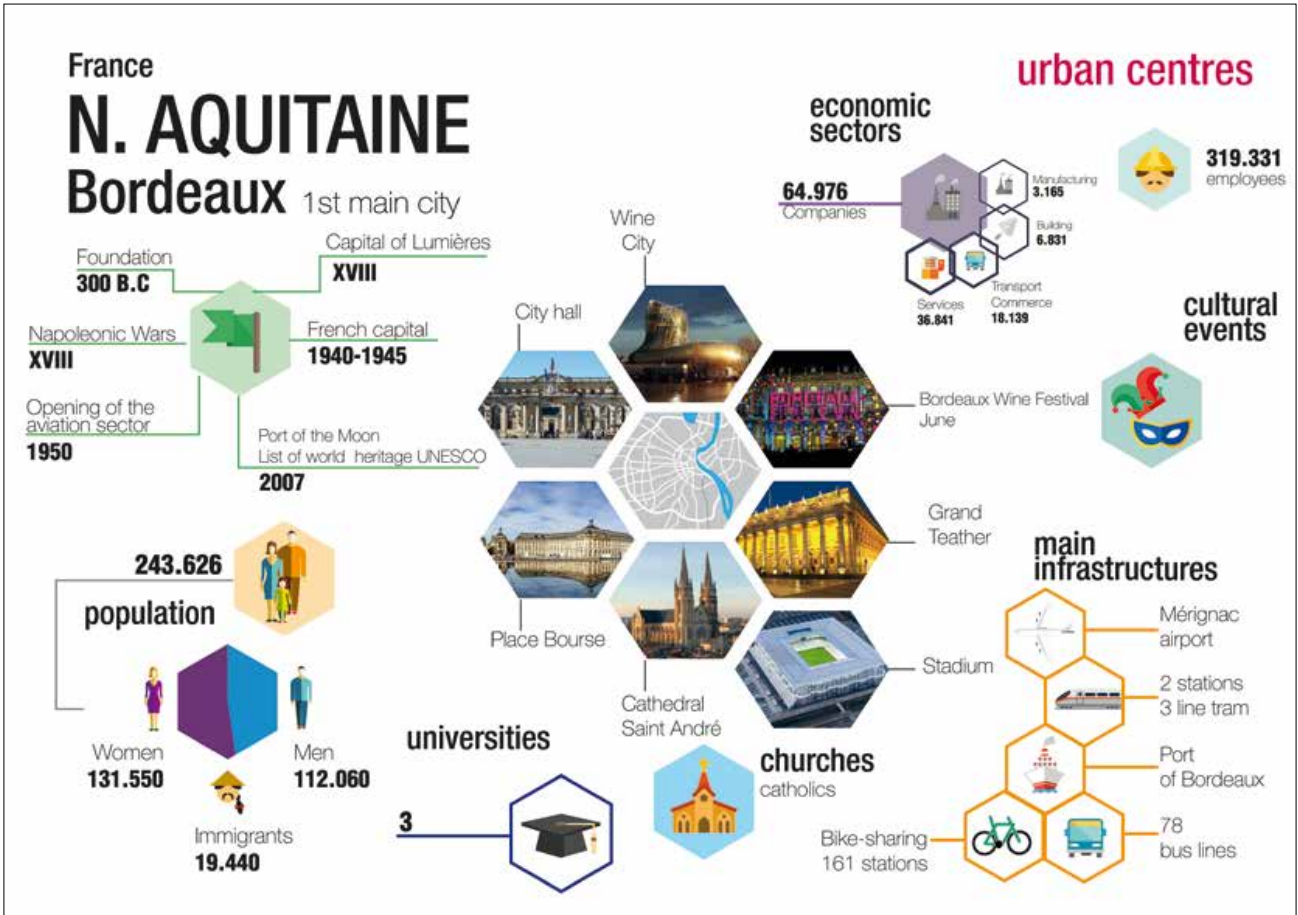
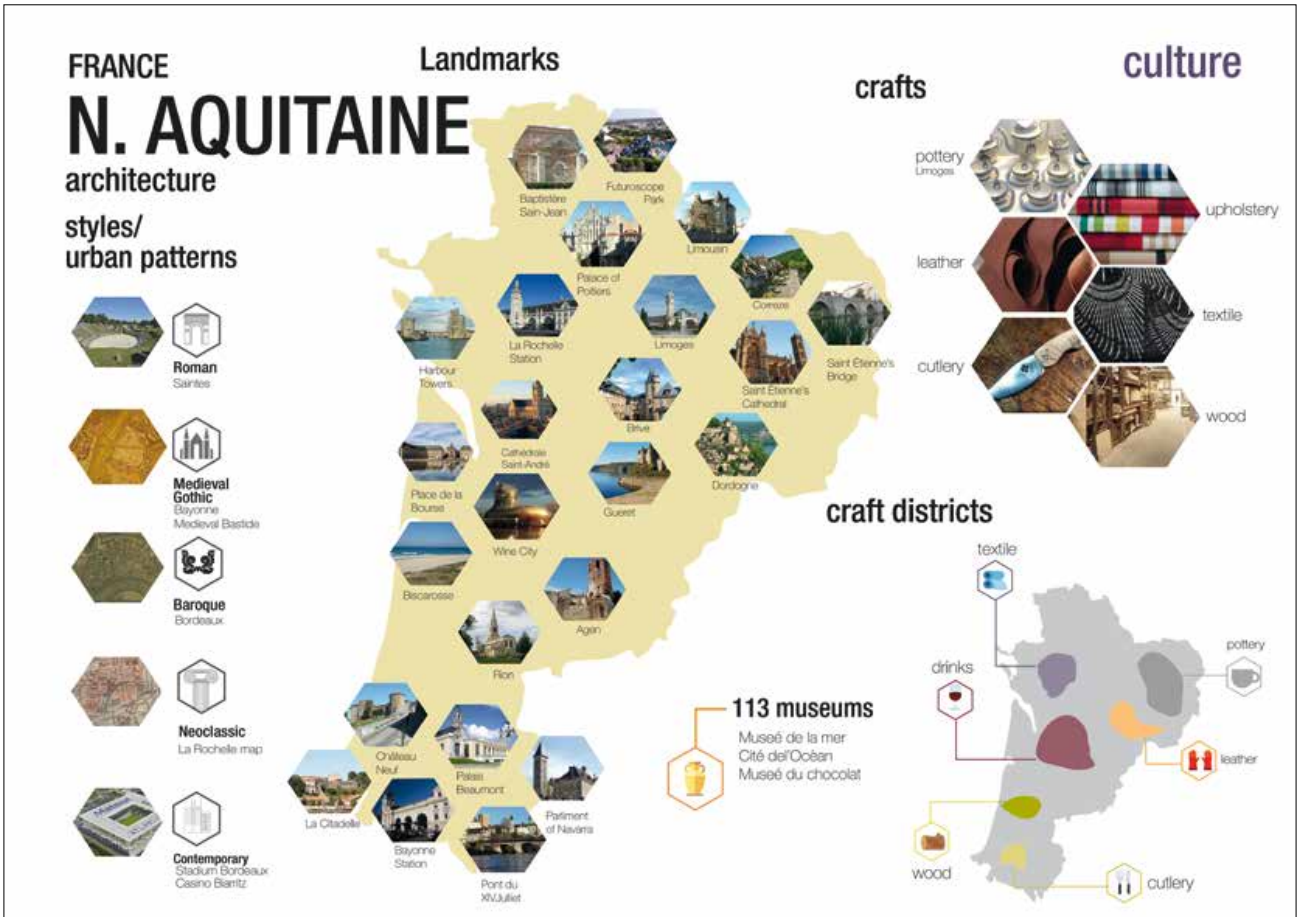
traditions

Eat Tapas and watch Rugby



recipes





France

# N. AQUITAINE Bayonne 2nd city

Foundation  
**950**

Middle Ages part of the Duchy of Vasconia

Center of Basque cultures activist

Conquered by Vikings  
**844**

Ruled By British  
**1169 -1199**

**47.492**  
population



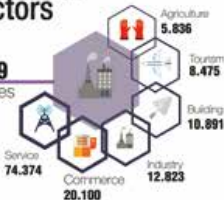
universities

**8**



economic sectors

**132.499**  
Companies



urban centres

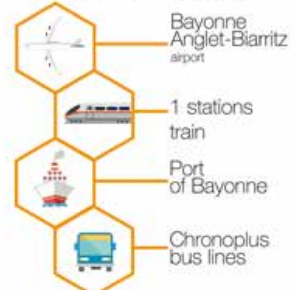
**117.082**  
employees

Fête de Bayonne  
July

cultural events

Train Station

main infrastructures



churches  
catholics

France

# N. AQUITAINE Limoges 3rd city

Foundation  
**10 B.C**

3rd century invasions of Germanic tribes

11th century artistic centre

General Confederation of Labour was created in **1895**

19th-century Limoges porcelain

**135.098**  
population



universities

**1**



economic sectors

**6.778**  
Companies



urban centres

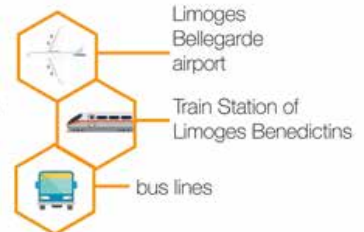
**118.096**  
employees

Limoges Carnival  
February

cultural events

Train Station

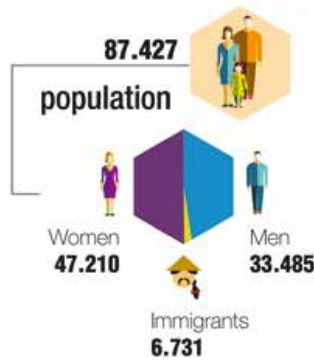
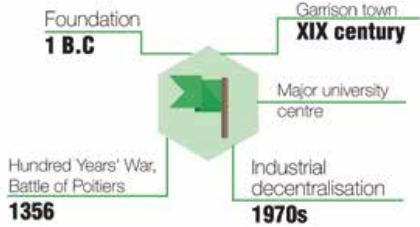
main infrastructures



churches  
catholics

France

# N. AQUITAINE Poitiers 4th city



## economic sectors

**4.151** Companies



## urban centres

**103.740** employees



Film Festival December

## main infrastructures

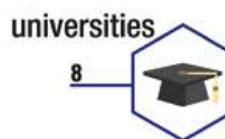
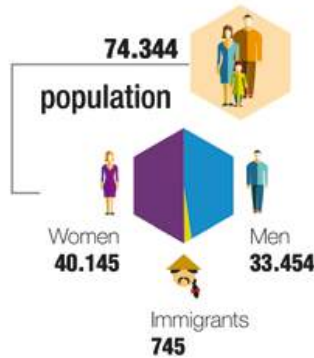
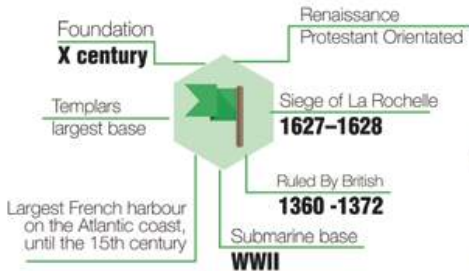


## churches catholics



France

# N. AQUITAINE La Rochelle 5th city



## economic sectors

**6.089** Companies



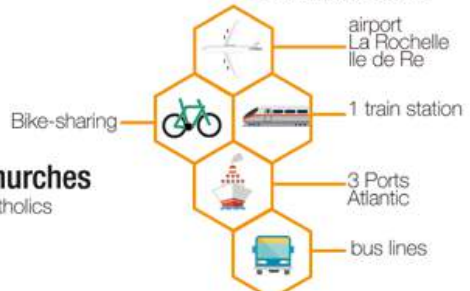
## urban centres

**80.833** employees



Les Francofolies July

## main infrastructures



## churches catholics



France

# N. AQUITAINE

Pau 6th city

Foundation  
**12 B.C**

Capital of Béarn  
**1464**

Winter resort town  
**1920**

Seat of the Kings of Navarre  
**1512**

The first balloon/plane flights  
**1844-1909**

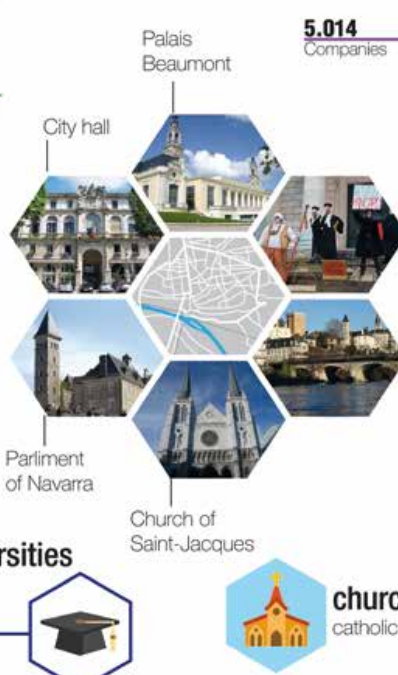
**77.575**

**population**

Women  
**41.890**

Men  
**35.684**

Immigrants  
**5674**



## urban centres

### economic sectors

**5.014** Companies

Industry  
**207**

Building  
**340**

Public Administration  
**1.085**

Transport  
**3.382**

**80.833** employees

### cultural events

Carnival Biarnés

Pont du XIV.Juliet

### main infrastructures

Airport of Pau-Pyrénées

TGV Intercity trains

Urban transport IDELIS network

### universities

**1**

### churches catholics

# N. AQUITAINE France

## bibliography /webography

consultation date: from september 2018 to december 2018

### geography

<http://agreste.agriculture.gouv.fr/IMG/pdf/teru2015T2teru.pdf>  
[www.wikipedia.fr](http://www.wikipedia.fr)

### demography

data from CCI Aquitaine 2016, Panorama Web CCI Aquitaine 2015

<https://fr.wikipedia.org>  
[www.insee.fr](http://www.insee.fr)  
[www.limonde.fr](http://www.limonde.fr)  
<http://beta.bdm.insee.fr>  
[www.adoption.gouv.fr](http://www.adoption.gouv.fr)  
<http://aquitaine.cci.fr>

Map: elaboration of the map retrieved from: <http://www.pigma.org/>

### economy

data from Panorama CCI AQUITAINE 2016  
data from insee Clap 2013  
data from CCI ALPC document

[www.verif.com](http://www.verif.com)  
[www.aftv.org](http://www.aftv.org)  
[larigion-dlpc.fr](http://larigion-dlpc.fr)  
[www.coop-aquitaine.coop](http://www.coop-aquitaine.coop)  
[www.coopdefrance.coop](http://www.coopdefrance.coop)

### culture

data from ESTIA Partners

[www.osbetrama.org/](http://www.osbetrama.org/)  
<https://fr.wikipedia.org>  
[gastronomie.aquitaine.fr/](http://gastronomie.aquitaine.fr/)  
[www.savoirfaire-gronde.fr/](http://www.savoirfaire-gronde.fr/)  
[/www.insee.fr](http://www.insee.fr)  
[www.sondequi.com](http://www.sondequi.com)  
<http://leuskadi.net.free.fr>  
<http://melandainiballet.com>  
[www.culturecommunication.gouv.fr](http://www.culturecommunication.gouv.fr)

### urban centers

[www.insee.fr](http://www.insee.fr)  
[www.bordaux-tourisme.com](http://www.bordaux-tourisme.com)  
<https://fr.wikipedia.org>  
[www.infobcc.com](http://www.infobcc.com)  
[www.u-bordaux.fr](http://www.u-bordaux.fr)  
<http://darwin.camp>  
[www.bayonne.cci.fr](http://www.bayonne.cci.fr)  
<http://www.laB4.fr>  
<http://www.chronoplus.eu>  
[www.bayonne.fr](http://www.bayonne.fr)  
<http://www.dke.eus.fr>  
[www.voyagesphotosmaru.com/economie\\_potiers.html](http://www.voyagesphotosmaru.com/economie_potiers.html)  
[www.ville-larochele.fr/economie.html](http://www.ville-larochele.fr/economie.html)  
[www.intersaute.com/Ville/potiers/Ville-63194/demographie](http://www.intersaute.com/Ville/potiers/Ville-63194/demographie)

# SLOVENIA

TOTAL AREA: **2.073.000 ha**

## geography

T.A.A (Total Agricultural Area) **491.414 ha** <sup>24%</sup>

Mountains **11%** Flat area **16%** Hills **75%**

Woods area **1.182.016 ha**

Not used area **17.726 ha**

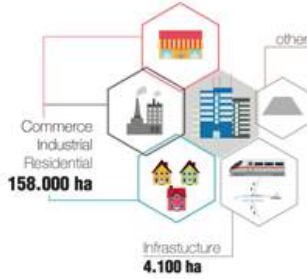
Not fertile land **15.060 ha**



Agriculture area (U.A.A.) **476.682 ha**

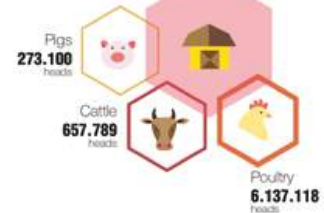
Area for pasture **274.251 ha**

Artificial area: **720.000 ha** <sup>35%</sup>



n° 72.377 Crop Farms  
6,8 average ha (SAT)  
family management

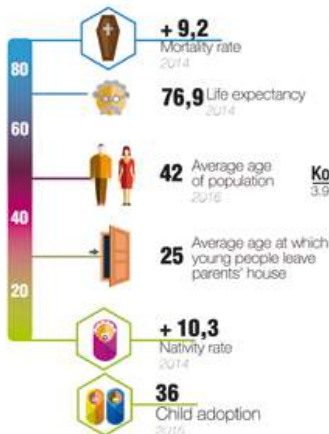
n° 55.814 Breeding Farms  
130 head average  
n.d. management



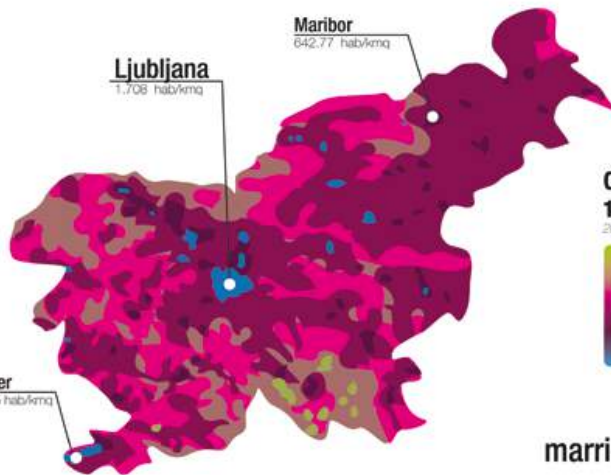
# SLOVENIA

Population (inhabitants)  
**2.064.241**  
2016

## demography



Men **1.023.872** Women **1.040.369**



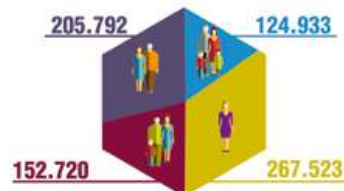
density of population  
**101,6 hab/kmq**  
2000



## family composition

2,47 Average number of people in a family TOTAL FAMILY UNITS **820.541**

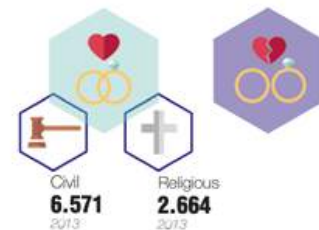
MAIN CATEGORIES



## marriage

Marriages **6.571**  
2014

Divorces **2.469**  
2014



# SLOVENIA

## demography

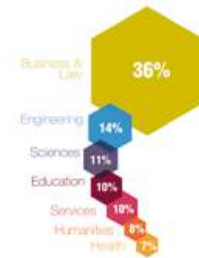
### employment



### education



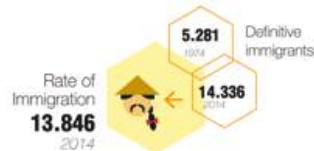
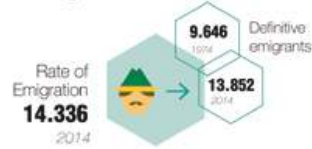
#### VOCATION OF EDUCATION



#### NUMBER OF EDUCATION LEVELS & UNITS 2015-2016



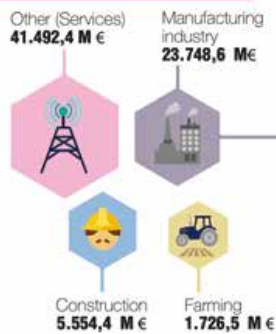
### migration



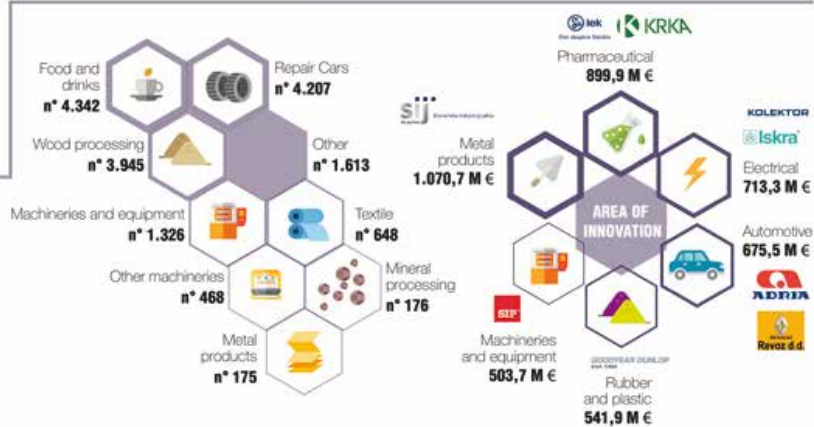
# SLOVENIA

## economy

#### MAIN ECONOMIC / INDUSTRIAL SECTORS

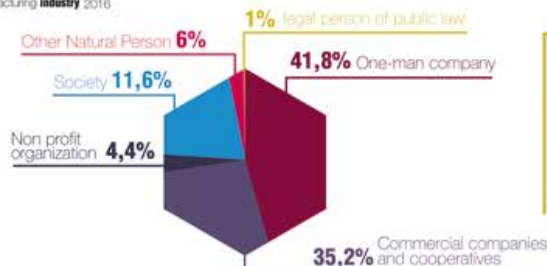


#### MANUFACTURING INDUSTRY 36.534 UNIT 2014



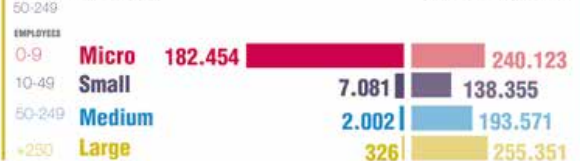
#### INTERNAL ORGANIZATION OF INDUSTRY

Manufacturing industry 2016



#### NUMBER OF INDUSTRIES

Manufacturing industry 2014



#### NUMBER OF EMPLOYEES

Manufacturing industry 2014

# SLOVENIA

## influences



## culture

## traditions by season

**spring**

- cherry feast – Goriška Brda
- carnival
- Palm Sunday
- Easter

**summer**

- The sheep feast in Jezersko
- 100 women go to Triglav
- Beer and flowers in Laško
- Lent festival in Maribor
- summer music festival

**autumn**

- The march from Litija
- St. Martin feast in Martinovance
- The Cow's Ball in Bohinj
- Grape harvest

**winter**

- prepare a crib
- kolodniki
- Christmas
- New Year's Eve

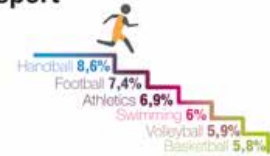
## languages



## religion



## sport



## notable residents

### industrial- politician- religious



## folklore

### instruments



### authors - musician- artist

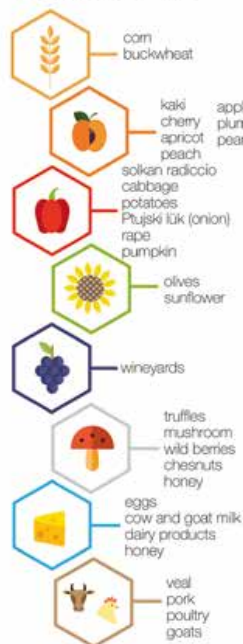
### dances



# SLOVENIA

## culture gastronomy

## food resources



## recipes



## traditions



# SLOVENIA

landmarks 3.995 monuments



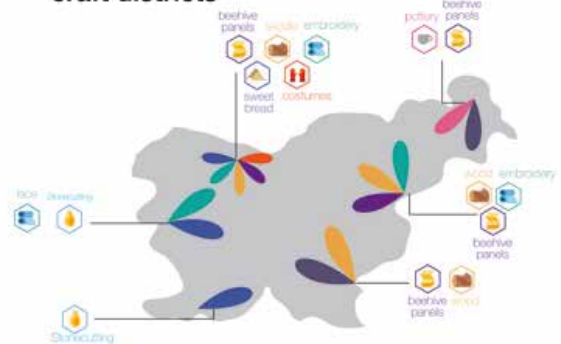
54 museums culture

National Gallery  
Museum of Modern Art

crafts



craft districts



styles/  
urban patterns

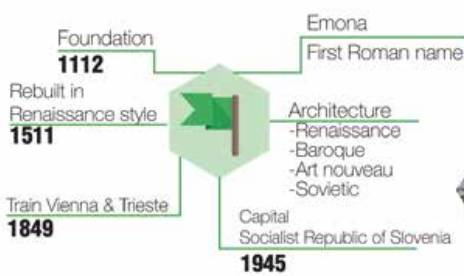


# SLOVENIA

Ljubljana 1st main city

economic sectors

urban centres



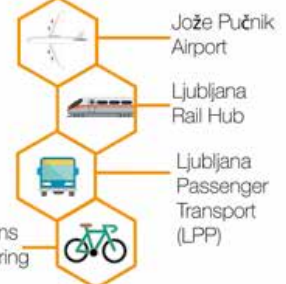
205.574 employees

cultural events

Summer Festival June

Opera & Ballet Theater

main infrastructures



population 288.179

Women 149.323  
Men 138.856

universities

1 University of Ljubljana

Cathedral of St. Nicholas

churches catholics

City hall

Ljubljana Castle

University Library (NUK)

# SLOVENIA

## Maribor 2nd city

Foundation **1204**

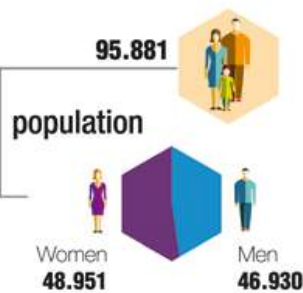
Markburg  
First Celtic name

Bombed by the Allies **1945**

European Capital of Culture **2012**

Largest city of Lower Styria

Train Vienna & Trieste **1849**



universities



urban centres



cultural events

main infrastructures



# SLOVENIA

## Koper 3dr city

Foundation **599**

Oldest town in Slovenia

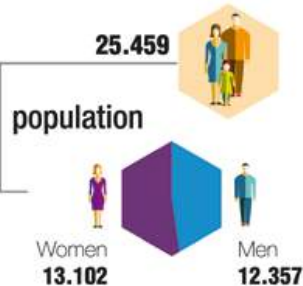
Italian Empire **1918-1954**

Middle Ages, was an island

Yugoslavia **1954-1991**

Venetian Republic **1279-1797**

Austrian Empire **1809-1918**



universities

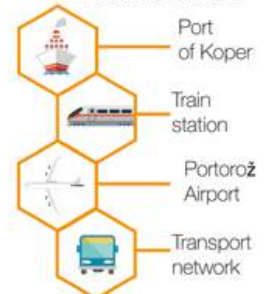


urban centres



cultural events

main infrastructures



# SLOVENIA

## bibliography /webography

consultation date: from september 2016 to december 2016

### geography

data from database SORS

[www.wikipedia.com](http://www.wikipedia.com)

### demography

data from database SORS

[www.stat.si](http://www.stat.si)  
<http://pxweb.stat.si/>  
[www.mddur.gov.si](http://www.mddur.gov.si)  
[www.mizs.gov.si](http://www.mizs.gov.si)  
[www.wikipedia.com](http://www.wikipedia.com)

map: interpretation of the map retrieved from cieszyn center <http://hedac.cieszyn.columbia.edu/gow/>

### economy

data from register of company

[www.stat.si](http://www.stat.si)  
[www.govk.gov.si/](http://www.govk.gov.si/)  
[www.mgri.gov.si](http://www.mgri.gov.si)  
<http://pxweb.stat.si>

### culture

[www.slovenia.info](http://www.slovenia.info)  
[www.wikipedia.com](http://www.wikipedia.com)  
[www.muzej-idrija-cerkno.si](http://www.muzej-idrija-cerkno.si)  
[www.gradimo.com](http://www.gradimo.com)  
[www.stat.si/doc/pub](http://www.stat.si/doc/pub)  
[www.kartuzija-gleterje.si](http://www.kartuzija-gleterje.si)  
[www.kgr-ribnica.si](http://www.kgr-ribnica.si)  
[www.rokodelstvo.si](http://www.rokodelstvo.si)  
[www.jurjovanje.si](http://www.jurjovanje.si)  
<http://tpi.net.eu>  
[www.zfbs.si](http://www.zfbs.si)  
[www.stnfolk.eu](http://www.stnfolk.eu)

### urban centers

<http://www.ljubljana.info>  
<http://maribor-pohorje.si>  
<https://www.stat.si>  
[www.slovenia.info](http://www.slovenia.info)  
[www.wikipedia.com](http://www.wikipedia.com)  
<http://pxweb.stat.si>

Romania

# NORTH-EAST

TOTAL AREA: **3.685.000 ha**

## geography



Mountains **28%**

Hills **12%**

Flat area **60%**

T.A.A (Total Agricultural Area): **3.518.306 ha** <sup>95%</sup>

Woods area **1.231.943 ha**  
**35%**

Not used area **34.021 ha**  
**1%**

Fallowed land **127.567 ha**  
**4%**

Agriculture area (U.A.A.) **2.124.775 ha**  
**60%**

Area for pasture **491.639 ha**

Artificial area: **158.260 ha** **5%**



n° **790.901** Crop Farms  
**2,69 ha** average  
**99%** family managed

n° **496.507** Breeding Farms  
**31,39 head** average  
**99%** family managed

Cereals **1.162.811 ha**

Fruits **12.752 ha**

Animal feed **582.850 ha**

Vegetables **52.854 ha**

Industrial crops **142.967 ha**

Beef **515.339** heads

Pigs **550.920** heads

Poultry **12.867.214** heads

Romania

# NORTH-EAST

Population (inhabitants)

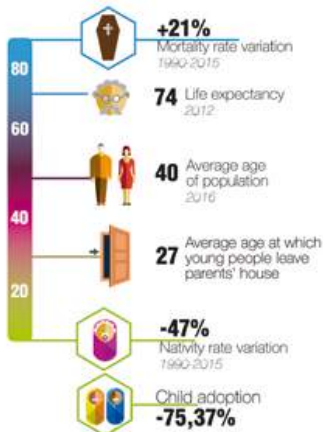
**3.302.217**

2011

## demography

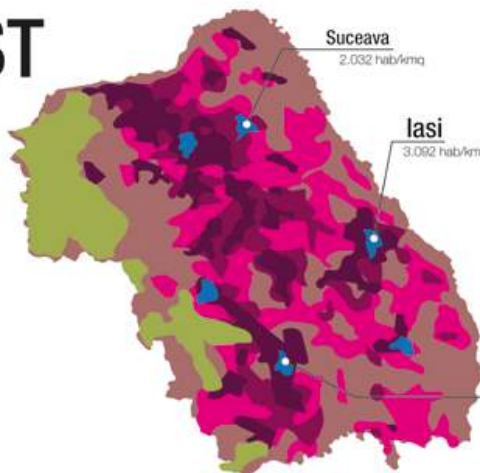
density of population

**100,5** hab./km<sup>2</sup>



Men **1.622.817**

Women **1.679.400**



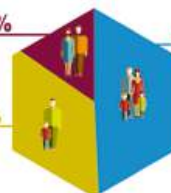
## family composition

**3,61** Average number of people in a family 2008-2015

**15,41%**

**49,24%**

**35,35%**



## marriage

**20.754** Marriages 2015

**5.215** Divorces 2015

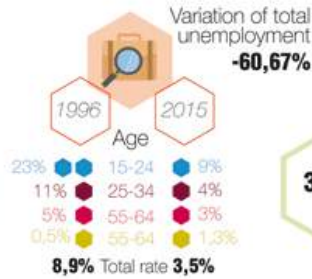
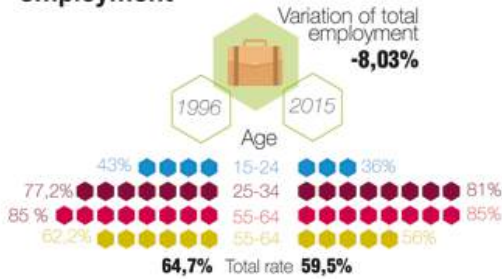


# Romania NORTH-EAST

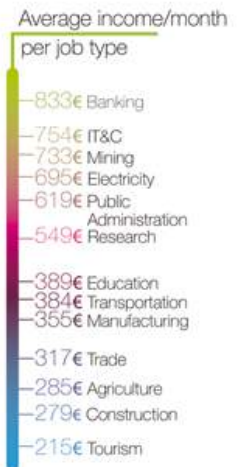
## demography

### employment

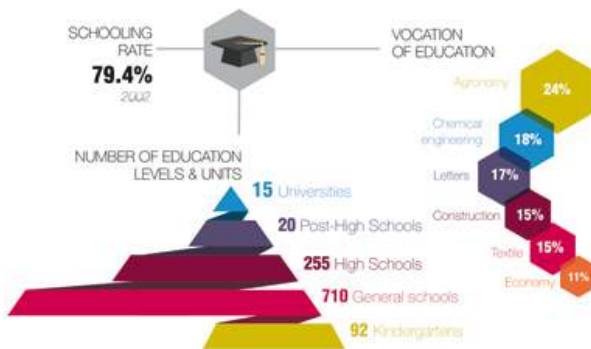
56.164 employees 2015



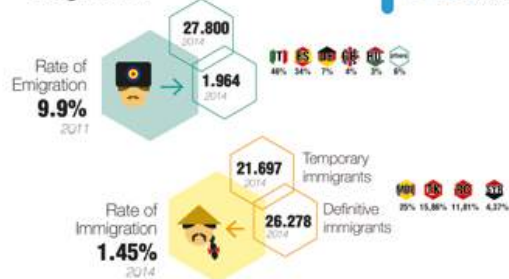
Average income per month 347 € 2015



### education



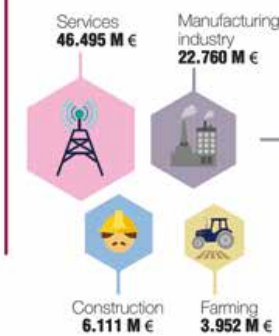
### migration



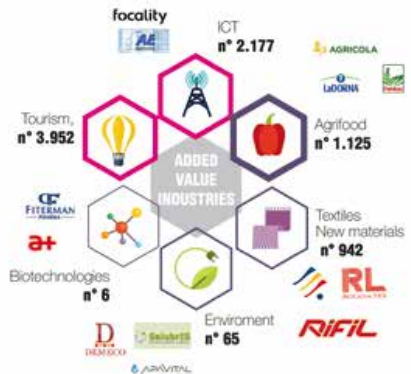
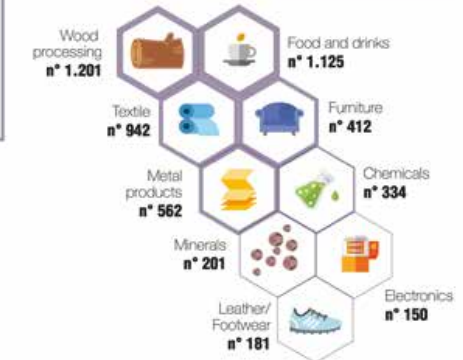
# Romania NORTH-EAST

## economy

### MAIN ECONOMIC / INDUSTRIAL SECTORS

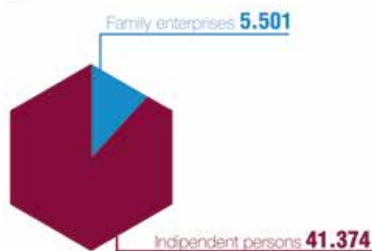


### MANUFACTURING INDUSTRY 6.104 UNIT



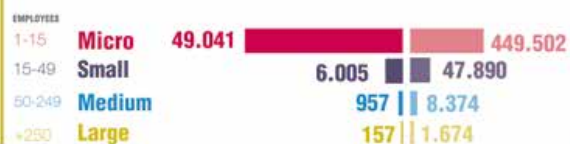
### INTERNAL ORGANIZATION OF INDUSTRY

Private entrepreneurs 2015



### NUMBER OF INDUSTRIES

Manufacturing Industry 2014



### NUMBER OF EMPLOYEES

Manufacturing Industry 2014

# Romania NORTH-EAST

## influences



## culture

### traditions by season

**spring**  
- 1st of March celebration  
beginning of spring  
- Orthodox Easter

**SUMMER**  
24th of June: **SANZENELE**,  
Universal Day Romanian  
Blouses

**autumn**  
St. Andrew's (protector  
of Romania)

**winter**  
- December 1st Romania's  
National Day  
- Christmas  
- New Year's Eve

### languages



### religion



### sport



### notable residents

industrialist - politician - religious



### folklore

#### instruments



#### authors-musician-artist



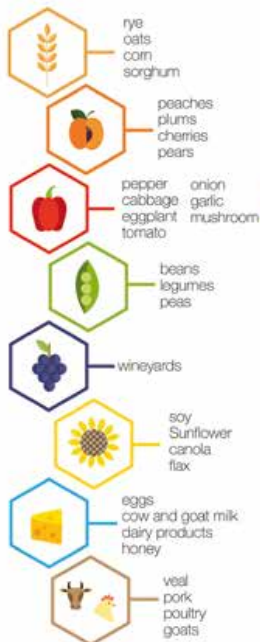
#### dances



# Romania NORTH-EAST

## culture gastronomy

### food resources



### recipes



### traditions

Welcome guests with bread and salt, a symbol of hospitality and respect.



# Romania NORTH-EAST

**124 museums**  
 Palatul Culturii  
 Cucuteni Museum  
 Unirii Palace  
 Cetatea de Scaun/rom

## styles/urban patterns



## landmarks

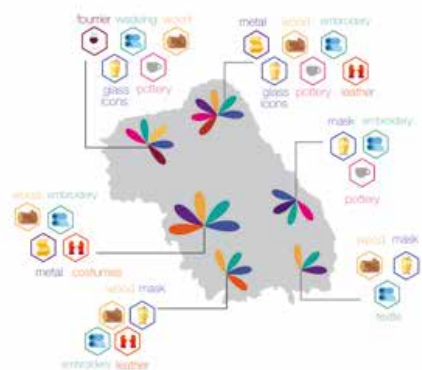


## crafts



## culture

## craft districts



# Romania NORTH-EAST Iasi

1st main city

**Foundation 1230**  
 The Cultural Capital of Romania  
 Oldest city in Romania  
 Rebuilt in **1950**  
 Destroyed 1513 by Tatars  
 1553 by Ottomans  
 1686 by Russian  
 1945 by URSS

**290.422**  
**population**  
 Women **152.871**  
 Men **137.551**  
 Immigrants **10.890**

**universities**  
**6**

**churches**  
 Romanian Orthodox

## urban centres

**economic sectors**  
**17.572** Companies  
 Furniture  
 Food 19%  
 Agriculture 21%  
 Textile 24%

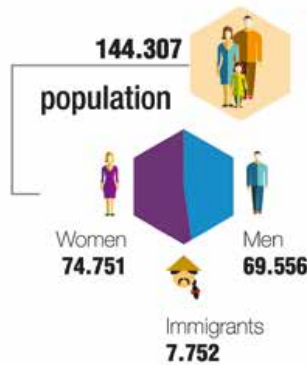
**cultural events**  
 St. Parascheva pilgrimage  
 14th October

**main infrastructures**  
 Iasi international airport  
 Train station  
 bus lines

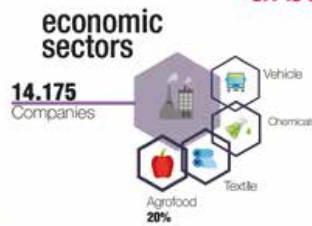


Romania  
**NORTH-EAST**  
**Bacau** 2nd city

Foundation **1230**  
Industrial center  
biggest aeronautic services factory  
Architecture  
-Interwar period  
- socialist  
Industrialized **1945**  
Economy Decrease **1990**



**2** universities



**urban centres**

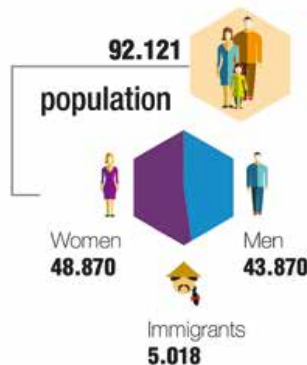
**cultural events**

**main infrastructures**

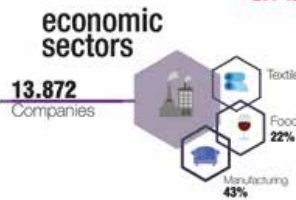


Romania  
**NORTH-EAST**  
**Suceava** 3rd city

Capital of Moldova **1565**  
Reindustrialized in **1950**  
Part of Austrian Empire **1775**  
Back to Romania **1918**  
Architecture  
Austrian-Hungarian  
Classic neo byzantin  
Humdrum



**2** churches  
Romanian Orthodox



**urban centres**

**36.698**  
employees

**cultural events**

**main infrastructures**



# NORTH-EAST Romania

## bibliography /webography

consultation date: from september 2016 to december 2016

### geography

data from PRD 2014-2020  
data from INSSE Tempo Database

[www.wikipedia.it](http://www.wikipedia.it)

### demography

data from INSSE Tempo Database  
data from EU SILC data

Map: rielaboration of the map retrieved from North-East Regional Development Agency

### economy

data from PRD 2014-2020  
data from INSSE Tempo Database  
data received from Chamber of trade and industry

### culture

data from PRD 2014-2020  
data from INSSE Tempo Database

G. Ionescu, (1937). *Istoria Arhitecturii Romanesti. Din cele mai vechi timpuri pana la 1900*.  
V. Florea. (2007). *Istoria artei romanesti, Bucuresti-Chisinău*. Litera International ed.  
R. A. Roman. *Bucate, vinuri si obiceiuri romanesti*

[www.wikipedia.it](http://www.wikipedia.it)  
<http://www.buildersmagazine.ro/>  
<http://romaniatourism.com>  
<http://spatiulconstruit.ro/>  
[www.bucataria-lui-radu.ro](http://www.bucataria-lui-radu.ro)  
<http://calendarulortodox.ro>  
[www.travelguideromania.com](http://www.travelguideromania.com)  
<http://tradiitiobiceiuri.blogspot.ro>

### urban centers

data from PRD 2014-2020  
data from INSSE Tempo Database  
data received from Chamber of trade and industry

<http://fasi-7coline.blogspot.ro/>  
[www.wikipedia.it](http://www.wikipedia.it)  
[www.aeroport.ro](http://www.aeroport.ro)  
city hall web site  
[bacaulactiv.ro](http://bacaulactiv.ro)  
[www.aeroportsuceava.ro](http://www.aeroportsuceava.ro)

© 2017 UMBERTO ALLEMANDI, TURIN

© 2017 THE AUTHORS

PUBLISHED AND PRINTED IN TURIN IN THE MONTH OF SEPTEMBER 2017  
BY UMBERTO ALLEMANDI PUBLISHING

**T**his volume aims at clarifying the role of Circular Economy according to a sustainable development and how policymakers can target it effectively in their activities. It is a guide to Systemic Design as a key methodology to establish sustainable regional action plans towards a Circular Economy.

As the result of an intense dialogue between people who present different perspectives and seek for a common language in the current complexity of policymaking and designing, this is the first of a three book series published across a four-year period (2016–2020) as part of the RETRACE Project funded by the Interreg Europe Programme.

**Preface by** Erwin Siweris

**With contributions by**

Jocelyn Bailey / Cyril Baldacchino /  
Silvia Barbero / Chiara Battistoni /  
Luigi Bistagnino / Emanuele Bompan /  
Daniel Calleja Crespo /  
Tiziana Dell’Olmo / Marjana Dermelj /  
Carolina Giraldo Nohra /  
Jean-Michel Larrasquet /  
Iban Lizarralde / Ander Muñoz Urbizu /  
Agnese Pallaro / Pier Paolo Peruccio /  
Estibaliz Plaza Elordi / Marion Real /  
Ramona Tanasă / Paolo Tamborrini /  
Benjamin Tyl



volume 1

ISBN 978-88-422-2444-0



9 788842 224440

**Partners**

