

Embedded model control GNC for the next generation gravity mission

*Original*

Embedded model control GNC for the next generation gravity mission / Colangelo, Luigi; Massotti, Luca; Canuto, Enrico; Novara, Carlo; Dionisio, Sabrina. - (2016). (Intervento presentato al convegno 67th International Astronautical Congress, IAC 2016 tenutosi a mex nel 2016).

*Availability:*

This version is available at: 11583/2674875 since: 2017-06-21T11:23:40Z

*Publisher:*

International Astronautical Federation, IAF

*Published*

DOI:

*Terms of use:*

This article is made available under terms and conditions as specified in the corresponding bibliographic description in the repository

*Publisher copyright*

(Article begins on next page)

## EMBEDDED MODEL CONTROL GNC FOR THE NEXT GENERATION GRAVITY MISSION

Luigi Colangelo<sup>a\*</sup>, Luca Massotti<sup>b</sup>, Enrico Canuto<sup>c</sup>, Carlo Novara<sup>d</sup>, Sabrina Dionisio<sup>e</sup>

<sup>a</sup> Department of Control and Computer Engineering, Politecnico di Torino, Corso Duca degli Abruzzi 24, Turin 10129, Italy, [luigi.colangelo@polito.it](mailto:luigi.colangelo@polito.it)

<sup>b</sup> Earth Observation Programmes Department – Future Mission Division (EOP-SF), ESA-ESTEC, NL-2200 Noordwijk, The Netherlands, [Luca.Massotti@esa.int](mailto:Luca.Massotti@esa.int)

<sup>c</sup> Department of Control and Computer Engineering, Politecnico di Torino, Corso Duca degli Abruzzi 24, Turin 10129, Italy, [enrico.canuto@polito.it](mailto:enrico.canuto@polito.it)

<sup>d</sup> Department of Control and Computer Engineering, Politecnico di Torino, Corso Duca degli Abruzzi 24, Turin 10129, Italy, [carlo.novara@polito.it](mailto:carlo.novara@polito.it)

<sup>e</sup> Engineering Department, Domain Exploration & Science, Thales Alenia Space Italia, Strada Antica di Collegno 253, Turin 10146, Italy, [Sabrina.Dionisio@thalesaleniaspace.com](mailto:Sabrina.Dionisio@thalesaleniaspace.com)

\* Corresponding Author

### Abstract

A Next Generation Gravity Mission (NGGM) concept for measuring the Earth's variable gravity field has been recently proposed by ESA. The mission objective consists in measuring the temporal variations of the Earth gravity field over a long time span, with very high spatial and temporal resolutions.

This paper focuses on the guidance, navigation and control (GNC) design for the science phase of NGGM mission. NGGM will consist of a two-satellite long-distance formation like GRACE, where each satellite will be controlled to be drag-free like GOCE. Satellite-to-satellite distance variations, encoding gravity anomalies, will be measured by laser interferometry. The formation satellites, distant up to 200 km, will fly in a quasi-polar orbits at an Earth altitude between 300 and 450 km.

Orbit and formation control counteract bias and drift of the residual drag-free accelerations, in order to reach orbit/formation long-term stability. Drag-free control allows the formation to fly counteracting the atmospheric drag, ideally subject only to gravity.

Orbit and formation control, designed through the innovative Integrated Formation Control (IFC), have been integrated into a unique control system, aiming at stabilizing the formation triangle consisting of satellites and Earth Center of Masses.

In addition, both spacecraft must align their control axis to the satellite-to-satellite line (SSL) with micro-radian accuracy. This is made possible by specific optical sensors and the inter-satellite laser interferometer, capable of materializing the SSL. Such sensors allow each satellite to pursue an autonomous alignment after a suitable acquisition procedure. Pointing control is severely constrained by the angular drag-free control which must ideally zero the angular acceleration vector, in the science frequency band.

The control unit has been designed according to the Embedded Model Control methodology and is organized in a hierarchical way, where drag-free control plays the role of a wide-band inner loop, and orbit/formation and attitude/pointing controls are narrow band outer loops. The relevant state equations are converted to discrete time providing the embedded model, part of the control unit. The state predictor, control law and reference generator are built on and interfaced to the embedded model.

Simulated results, via a high-fidelity simulator, prove the concept validity and show that the control performances are in agreement with the defined mission requirements. Indeed, the presented control strategy has been shown capable of keeping the attitude and formation variables stable within the required boundaries, all over the 10-year mission, through a low-thrust authority in the order of few milli-Newton.

**Keywords:** Gravimetry, Drag-free; Orbit; Formation; Pointing; Attitude

### Acronyms/Abbreviations

Embedded Model Control (EMC), Next Generation Gravity Mission (NGGM), Formation Local Orbital Frame (FLOF), Satellite-to-satellite line (SSL), Measurement bandwidth (MBW), Integrated orbit and Formation control (IFC), Attitude and Orbit Control System (AOCS).

### 1. Introduction

Post ESA's GOCE (Gravity field and steady state Ocean Circulation Explorer [1]) and GRACE (Gravity Recovery and Climate Experiment [2]) space Earth gravimetry missions will rely on a formation of free falling 'proof masses' and on the measurement of their

distance variations, encoding the gravity anomalies. As a matter of fact, one of the main objective will be to increase at greater extent the performance level of gravity missions. Such an ambitious objective can be achieved by adding a formation control to the formation control technology in addition to long-distance distributed space systems as in GRACE, in the order of 100 km distance, but at a lower altitude (300 to 400 km). However, at those altitude ranges, the effects of the Earth atmosphere over the satellites are very severe. Hence, such kind of missions require that each satellite is controlled to be drag-free (up to a certain measurement bandwidth) and completed by an accurate distance measurement system.

Following these main principles, the Next Generation Gravity Mission (NGGM), under study at the European Space Agency (ESA), will consist in a two-satellite long-distance formation, placed in a low near-polar orbit. Each satellite will be autonomously controlled to be drag-free. Concerning the measurement principle, a laser interferometry will ensure the satellite-to-satellite tracking and the inter-satellite distance variation measurements.

Consequently, a first set of mission requirements comes from the scientific data elaboration. In this framework, the main requirement concerns non-gravitational CoM accelerations as they must be ideally brought to zero. A second set of requirements concerns the orbit and formation control.

In this case, orbit and formation control is designed to counteract the effects of the drag-free control residual, which can make the satellite formation diverging. Finally, the attitude and pointing control system is intended to keep aligned the satellite optical axis and eventually ensure an orbital roll motion for tracking the Sun beam.

The NGGM mission technology is defined as a consequence of the established requirements [3]. Indeed, drag-free control requires one or more accelerometers capable of providing linear and angular accelerations. In addition, formation control requires both a global navigation satellite system (GNSS), in order to materialize the relative satellite position, velocity and the formation frame, and an inter-satellite link (ISL). As a design choice, all the control functions are actuated by an electric propulsion assembly, able to provide a few milli-Newton thrust level. Finally, satellite-to-satellite mutual alignment variations are measured via an inter-satellite laser interferometer and specific optical sensors.

The approach adopted in the AOCS design for the NGGM mission is based on the Embedded Model Control (EMC) design methodology [4,5], which calls for a hierarchical and multi-rate control unit around the real-time internal model of the satellite controllable dynamics. This internal (or embedded) model describes

the controllable dynamics and the disturbance dynamics. The disturbance dynamics is in charge of estimating a wide range of unknown model errors as drag-free residuals, parametric uncertainties, cross couplings and neglected non-linearities.

This paper focuses on the AOCS design principles for the science phase of the NGGM mission. One of the most relevant contribution of this paper is the definition of all the NGGM AOCS architecture control functions within the unified framework of the EMC design methodology. Specifically, for the orbit and formation control, this is enhanced via the definition of an innovative integrated orbit and formation control (IFC) architecture [6]. Such formulation is based on the definition of a peculiar formation reference frame (the formation local orbital frame, FLOF) and the formation triangle virtual structure.

This paper starts with some concepts about the NGGM mission requirements and the architecture of the control design. After this brief outline, the paper describes the main principles of the EMC design and the drag-free concept. Further, the formation triangle dynamics model is made explicit, introducing the FLOF frame. The discrete-time (DT) final equations of the drag-free and the formation internal models are provided. As a consequence, leveraging the EMC design, the state predictor and the control law are built on and interfaced to the internal model. In addition, some sketches about the attitude and pointing control and its interface with the angular drag-free control functions are provided. Finally, some preliminary simulated results verify control performances and requirements compliance.

## **2. NGGM Mission Requirements and EMC Control Architecture**

In this section some of the main characteristics of the NGGM mission will be addressed as well as the corresponding control requirements. Further, a general overview of the adopted design methodology (EMC) will be provided, together with the AOCS chief design principles.

### *1.1 Mission characteristics and requirements*

Concerning satellite formation geometry, two suitable formation types have been proposed as good candidates for the NGGM science mission mode: (i) inline, and (ii) pendulum. The inline formation is characterized by two satellites following the same orbital path, with different true anomalies. On the other hand, in the pendulum configuration, the two satellites are placed on two slightly separated but intersecting orbits, having either different right ascension of the ascending node. Further, the nominal altitude range spans between 325 and 425 km on quasi-polar inclined orbits, and the orbit period varies among 5.46 and 5.59

ks. Finally the nominal inter-satellite distance is in the range of 100-200 km. Such a set of orbital features will allow NGGM to provide all-latitude coverage, short repeat cycles and a precise gravity signal with a long mission lifetime (up to 11 years).

The NGGM mission concept leverages a two-satellite formation, ideally drag-free and flying as test masses in the Earth gravity field. Such a pair of distant drag-free satellites acts as a sort of gradiometer, with a very long baseline ( $\approx 200$  km). As a matter of fact, such configuration will make NGGM the first free-falling formation mission. Given the distance variation between the two satellites CoM, which is the mission fundamental observable, a gradiometer-like configuration of this kind has been conceived in order to retrieve only the small fraction, within the total distance variation, due to the gravity acceleration (i.e. the Earth gravity field anomalies effect).

Consequently, from the orbit and formation control perspective, such a drag-free formation implies that no stringent requirements apply to the formation control. Indeed, in principle the two satellites, while acting as proof-masses, must be left free to move under the action of the Earth gravity field. However, since the accelerometer errors (e.g. bias, drift) make an ideal drag-free control not possible, a loose orbit and formation control is needed [3]. The Table 1 lists the main requirements driving the control design in the science mode of the NGGM mission. Note that the formation requirements have been split into distance, radial and lateral variations with respect to a nominal circular orbit; expressed as a percentage of the nominal inter-satellite distance.

Table 1. NGGM mission science control mode: main performance requirements for the AOCS

Performance variable	Bound	Unit
<b>Drag-free control</b>		
Linear CoM acceleration (PSD in MBW)	0.01	$\mu\text{m/s}^2/\sqrt{\text{Hz}}$
Linear CoM acceleration	1	$\mu\text{m/s}^2$
Angular CoM acceleration (PSD in MBW)	0.01	$\mu\text{rad/s}^2/\sqrt{\text{Hz}}$
Angular CoM acceleration	1	$\mu\text{rad/s}^2$
<b>Orbit and Formation Control</b>		
Formation Distance Variation	5	% (distance)
Formation Lateral Variation	1	% (distance)
Formation Radial Variation	2	% (distance)
<b>Attitude and Pointing Control</b>		
Satellite X-axis pointing along the SSL	2	$\mu\text{rad}/\sqrt{\text{Hz}}$
Satellite X-axis roll along the SSL	2	mrad

All the requirements above in Table 1 refer to the Scientific Mode (SCM), in which the measurements needed to obtain the scientific product are performed.

This control mode provides fully drag-free environment, formation flying control, and optical link between satellites and orbit control (by ground or

autonomous). The science control mode is the last of a series of control model starting from the satellites separation from the launcher and through a mode transition logic based on some monitoring variables. However, the science mode is the fundamental structure on which several control functions of the higher modes are based.

## 1.2 The Embedded Model Control

The EMC rationale encompasses three model classes to describe the uncertainty affecting the models [4]. The term plant refers to the real system to be controlled (the NGGM spacecraft formation), whereas the digital control unit refers to NGGM AOCS in charge of orbit, formation and attitude control. The word model corresponds to different classes: (i) the fine model is the more refined, (ii) the design model is a discrete-time simplification formulating the uncertainty class, (iii) the embedded model implements the design model into the control unit. The fine or truth model surrogates the spacecraft system and environment (shortly the plant) and may be a mix of code and hardware. Assuming only code (numerical simulator) it is written and coded as a mix of continuous-time (CT) and discrete-time (DT) state equations.

The design model is the DT conversion of the fine model. In this case, the whole dynamics from command to measurement is split into controllable dynamics, whose states must be included in the embedded model, and into a neglected dynamics, that accounts for the parasitic dynamics outside the EM. The controllable dynamics is completed by three kinds of disturbance signals: (i) known interactions that are not essential to ensure controllability, (ii) unknown interactions that account for the parametric uncertainty, (iii) unpredictable disturbances, to account for unpredictable causes (causal uncertainty).

Finally, the embedded model is the real-time instantiation of the design model inside the control unit. To this end, the neglected dynamics is dropped and unknown interactions are considered part of the partly unpredictable disturbance. This means that no parameter estimation is done, unlike the adaptive control.

Thus, Embedded Model Control methodology implies the design of an internal model (Embedded Model) coded into the control unit and running in parallel with the plant. The Embedded Model is made up by two main building blocks. Indeed, the controllable dynamics of the plant to be controlled (spacecraft) is completed by a disturbance dynamics model.

Indeed, EMC allows to treat all the wide range of unmodelled dynamics, non-linear effects, and parameter uncertainties as disturbances, collocated at command level, which can be estimated and rejected. The disturbance dynamics, being purely stochastic and parameter-free, aims at estimating all this non-modelled

effects. The disturbance dynamics is driven by a noise vector playing the role of a disturbance input, to be real-time retrieved from the model error (plant output less model output) by means of a suitable noise estimator (NE). The union of the EM and the NE represents a state observer, affected by prediction errors.

This disturbance or uncertainty dynamics makes possible to estimate and then reject through the control law all the model errors, neglected or un-modelled dynamics, parametric uncertainties et cetera. Therefore, the embedded model control technique fully solves the typical modelling problems through a simple but effective disturbance estimation dynamics. Hence, one of the main advantage consists leveraging a simplified LTI internal model but, at the same time, directly rejecting the perturbations from the LTI model reducing the required thrust level and fuel consumption.

As a property of the EM, all the state variables, forced either by command, or noise, must be observable from the model output. By tuning the eigenvalues of the closed-loop system dynamics, the stability of the state predictor versus the neglected dynamics is achieved.

In addition, starting from the operator target, a reference generator provides the reference trajectories for command and controllable states.

Finally, the control law is composed by three terms: the nominal command, the feedback and the disturbance rejection.

Control requirements in Subsection 1.1 are formulated through reference values (or time profiles) of the model variables, corrupted by a certain tracking error, whereas error fluctuation is bounded as in Table 1 in terms either of absolute maximum value or in terms of a spectral density bound within the scientific measurement band ( $MBW = \{1mHz \leq f \leq 0.1Hz\}$ ).

### 1.3 Control design principles

Given the EMC AOCS design, the main driving principles [6,7] are:

**Integrated orbit and formation control** The orbit and formation control design is driven by an innovative approach to multi-satellite formation and orbit control based on the integration of orbit and formation dynamics and control through the formation triangle concept. As a matter of fact, such modelling idea leads to new CW-type equations (see [6] and Section 4).

**Frequency coordination** Drag-free control and the formation control are actuated at different frequency bands. This is deemed necessary in order to prevent any possible interference among inner/outer loops control functions and to coordinate properly the several tasks of the control design.

**Multi-hierarchical control** The control tasks are carried out via a multi-hierarchical control design (see Figure 1). Indeed, the integrated orbit and formation control is an outer loop which provides the long-term

reference accelerations to be tracked by drag-free control.

**Attitude and formation decoupling** Also favoured by the EMC disturbance dynamics and due to a mrad alignment between control frame and FLOF, since the early mission phases, the two frames can be confused. Nevertheless, some coupling still persists at certain extent in the thruster dispatching algorithm, due to the very limited thrust authority (few milli-Newton as a baseline).

**Coordinate decomposition** applies to all the control blocks, in Figure 1. For instance, drag-free control is decomposed into six independent SISO (single-input-single-output) loops, taking advantage of the stochastic disturbance dynamics. Specifically, concerning the attitude and pointing, coordinate decomposition (roll, pitch and yaw) relies on the assumption of small (order of mrad) estimation and tracking errors since the early mission phases. Nevertheless, the formation embedded model is not completely decoupled, because of the interactions between altitude and distance, in the same ways as longitudinal and radial coupling in Hill's equations.

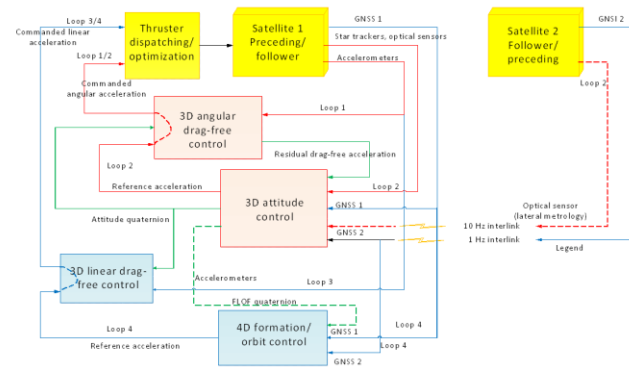


Fig. 1. Higher-level block diagram of the AOCS architecture for the NGGM science mode

### 3. Linear and Angular Drag-free Control

In this section, the main focus will be on the drag-free control, both linear and angular.

Drag-free linear control aims at making both the satellites free-falling. Indeed, through drag-free control, the satellite orbit is only determined by local gravity but secular (low frequency) residuals, due to the accelerometer errors (bias, drift, et cetera). Therefore, the satellite formation is only subject to differential accelerations due to gravitation, which are revealed by the inter-satellite distance fluctuations. On the other side, angular drag-free control aims at zeroing all the disturbance torques; including gyro, gravity gradient and aerodynamic torques. Both the commanded force and torques are actuated by a thruster assembly.

Given the impossibility of a perfect drag-free condition, due to the accelerometer errors above mentioned, formation and attitude controls are needed.

From the system perspective, each drag-free satellite, according to the accelerometer concept [8], embarks in a proper cage free falling masses. In addition, an active suspension system, after performing initial centering after launch, keeps the masses centered in the cage. As a consequence, by measuring the suspension force, it is possible to retrieve a measurement of the non-gravitational forces acting on the satellite, which can be directly cancelled by thrusters commanded by a drag-free control.

The ideal drag-free requirement, both concerning the linear and the angular case, is to zero the residual accelerations in the selected MBW. Outside this frequency interval the requirement may be relaxed in order to accommodate the formation and attitude control authorities.

Drag-free control is actuated separately on each satellite of the NGGM formation. By considering a single satellite, the EMC allows each component to be controlled separately, leading to six decoupled scalar drag-free controls for each spacecraft (three for the linear and three for the angular case).

The Embedded Model includes a disturbance dynamics model of the disturbance class affecting the dynamics, driven by arbitrary unknown signals. Such a disturbance estimation model is designed based on experimental data and literature about thermosphere density and experimental thruster noise. The studies made during the ESA GOCE mission [8] suggest how a combination of white noise (accounting for the thruster noise), and a first and second-order random drift (modelling thruster noise and aerodynamic forces) is a reliable stochastic model for the class of the expected time realizations.

As a consequence, according to the Embedded Model Control methodology, a ninth-order stochastic disturbance dynamics (third order for each axis) driven by a 12th-dimensional bounded noise vector  $\mathbf{w}_d$  allows to account reliably for the high frequency spectral density of drag, thruster noise and accelerometer bias/drift [6]. The final DT model, from sensor to actuator dynamics, which is embedded in the control unit, reads:

$$\begin{aligned} \mathbf{x}_a(i+1) &= \begin{bmatrix} 0 & I & 0 & 0 \\ 0 & I & I & 0 \\ 0 & 0 & I & I \\ 0 & 0 & 0 & I \end{bmatrix} \mathbf{x}_a(i) + \begin{bmatrix} I \\ 0 \\ 0 \\ 0 \end{bmatrix} \mathbf{u}_a(i) + I_4 \mathbf{w}_d(i), \\ \mathbf{y}_a(i) &= [I \quad 0 \quad 0 \quad 0] \mathbf{x}_a(i) + \mathbf{e}_a(i) \end{aligned} \quad (1)$$

where the state vector is  $\mathbf{x}_a = [z_a \quad x_d \quad s_d \quad z_d]^T$ ,  $\mathbf{u}_a$  is the command,  $\mathbf{e}_a$  is the model error (plant minus model output),  $\mathbf{w}_d$  is the noise signal driving the disturbance dynamics, and the total accelerometer reads:

$$\mathbf{a}(i) = \mathbf{d}_a(i) + \mathbf{b}_a(i) + \mathbf{u}_a(i) \quad (2)$$

where  $\mathbf{d}_a(i) + \mathbf{b}_a(i) = \mathbf{x}_d(i) + \mathbf{w}_d(i)$  is the sum of the total estimated disturbances and the accelerometer secular error (bias/drift). The loop is closed by adding to (1) a static noise estimator, as in standard observers:

$$\mathbf{w}_d(i) = \mathbf{L} \mathbf{e}_a(i) \quad (3)$$

where a  $\mathbf{L}$  is a  $12 \times 3$  constant matrix, making the closed-loop dynamics asymptotically stable. The nonzero entries (on the diagonal) of  $\mathbf{L}$  are computed by assigning the eigenvalues of the closed-loop matrix trading-off stability property vs the desired performance level.

It is worth to notice how in (1) the actuator-to-sensor dynamics is simplified to a first-order dynamics (first row in (1)). Such a design simplification in the Embedded Model is in line with the GOCE drag-free control [8].

From the control perspective, being the thruster-to-accelerometer dynamics in (1) asymptotically stable, the reference tracking is ensured by only cancelling at the better extent the sum of the estimated disturbance  $\mathbf{d}_a(i) + \mathbf{b}_a(i)$ . Therefore, the control law reads:

$$\mathbf{u}_a(i) = -\mathbf{x}_d(i) + \mathbf{u}_{ref}(i) \quad (4)$$

According to the drag-free control concept, the former term in (4) tends to ideally zero the non-gravitational accelerations, within the selected bandwidth. The second term generically denotes either formation or attitude commands, counteracting the drag-free residuals.

#### 4. Integrated Orbit and Formation Dynamics

In this section, the main focus will be on the integrated orbit and formation dynamics. For the sake of brevity the inline formation type, in which the satellites follow the same orbital path with different true anomalies, will be addressed.

The designed orbit and formation embedded model assumes that the high-frequency forcing accelerations are only due to the gravity periodic components. As a matter of fact, this assumption is due to the high-

frequency drag-free control action, able to cancel the short-term non-gravitational accelerations.

In the present design, as soon as the formation distance can be on-board controlled (it requires radio interlink to exchange GNSS data), formation and orbit control are combined into a unique strategy, through the definition of the formation triangle virtual structure (Figure 2 and [6]) and the FLOF perturbations definition.

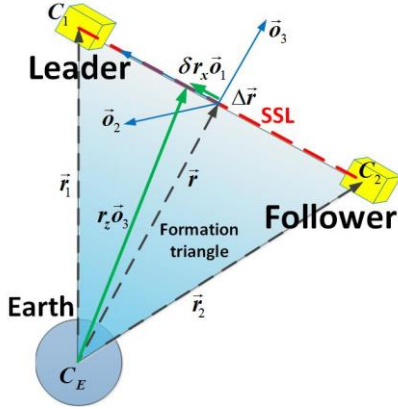


Fig. 2. The formation triangle and the Formation Local Orbital Frame (FLOF)

By design, the formation triangle vertices join the satellites CoM and the Earth CoM. The model has been built with respect to a common main frame of reference: the Formation Local Orbital Frame (FLOF, see Figure 2). The three FLOF axes are defined as follows:

$$\mathbf{o}_1 = \frac{\Delta \mathbf{r}}{d}, \quad \mathbf{o}_2 = \frac{\frac{\mathbf{r}}{r} \times \mathbf{o}_1}{\left| \frac{\mathbf{r}}{r} \times \mathbf{o}_1 \right|}, \quad \mathbf{o}_3 = \mathbf{o}_1 \times \mathbf{o}_2, \quad (5)$$

where  $\mathbf{o}_1$  is the satellite-to-satellite (SSL) direction,  $\mathbf{r}$  is the mean formation radius,  $\Delta \mathbf{r}$  is the satellites relative position, and  $d$  is the inter-satellite distance.

As a consequence, the orbit/formation dynamics is expressed through a combination of Cartesian and angular perturbations (triangle angular rotations), defined through the FLOF frame. Specifically, the three controllable Cartesian perturbations (see Figure 2) are: (i) the distance variation  $\delta d$ , (ii) the formation mean radius deviation (along the SSL)  $\delta r_x$ , (iii) the mean altitude variation  $\delta r_z$ , defined as:

$$\Delta \mathbf{r} = (d_{nom} + \delta d), \quad \mathbf{r} = (r_{nom} + \delta r_z) \mathbf{o}_3 + \delta r_x \mathbf{o}_1 \quad (6)$$

given the nominal radius  $r_{nom}$  and the nominal inter-satellite distance  $d_{nom}$ .

The resulting integrated orbit and formation dynamics is expressed through a new set of Clohessy-Wiltshire-type equations, based on the differential equations of the formation triangle perturbations [6].

In order to derive these motion equations we started from the relative satellites position vector and we derived the differential equation of the inter-satellite distance and their derivatives. After that, the formation triangle kinematic equations in terms of the FLOF angular rate and of the angular acceleration have been obtained.

It is worth to notice how the gravity gradient has been kept into account in terms of the spherical gravity term. Indeed, the higher order terms, referring to gravitational and non-linear have been considered as external disturbance accelerations. Such a model linearization leverages the Embedded Model Control capability to estimate and reject in the control law all the non-explicitly modelled effects, through the disturbance dynamics.

The set of differential equations is completed by the six formation degrees of freedom concerning the mean and differential altitude.

As already mentioned, the rationale behind the orbit and formation control is to counteract the drag-free residuals. Indeed, given a formation variable, let us say the distance  $d$ , this can be decomposed as the sum of three terms: (i) a nominal value  $d_{nom}$ , (ii) a secular component  $d_0$ , and (iii) a periodic component  $d_g$ , due to the gravity field effect. The third component is linked to the scientific product of the mission whereas the second one is due to the accelerometer errors (i.e. bias/drift), preventing a perfect drag-free control. Hence, the orbit and formation control has been conceived as an outer loop aiming at regulating the formation variables to their nominal value, neglecting the periodic component while trying to zero the secular one.

As a consequence, starting from the above mentioned set of differential equations, perturbation equations, linearized around the equilibrium point, can be adopted to the purpose of control design.

The next modelling step leads to the discretization of equations to implement them within a digital control unit. The discretization step must take into account that formation control authority should not degrade drag-free requirements as well as the very limited thrust authority. At this proposal a continuous control strategy appears to be useful [6]. As a matter of fact, the orbital rate has been valued as a viable discretisation time step. Hence the IFC command changes each nominal orbit period.



At this point, according to the EMC design, the embedded model to be coded directly into the control unit can be built. The embedded model encompasses the controllable model (i.e. the ZOH DT formation equations) completed by a purely stochastic and parameter-free disturbance dynamics, to describe the secular components (bias and drift) of the unknown disturbances. To build the controllable dynamics part, all the uncontrollable variables as the longitudinal perturbation and the formation rates have been dropped, since we are only interested in the control of the formation triangle position variables (radial altitude control). In the following, for the brevity sake, only the discrete-time final equations of the formation internal model are provided.

Let us define the state vector as:

$$\mathbf{x} = [\mathbf{r}_w \quad \mathbf{w}]^T = [\rho_{xw} \quad \rho_{zw} \quad d_w \quad \theta_w \quad w_x \quad w_z \quad w_d \quad w_y]^T \quad (7)$$

where the terms  $w_k$  are the four normalized formation rate perturbations, while  $\rho_{xw} = \rho_x + (w_d - w_z)/2$ ,  $\rho_{zw} = \rho_z + (w_y + w_x)/2$ ,  $d_w = \delta d + \rho_z + 2w_y$ ,  $\theta_w = d_{nom} \delta \theta - 3\rho_x - 2w_d$  are linear combinations of formation position perturbations variable. Indeed,  $\rho_x = \alpha \delta r_x$ ,  $\rho_z = \alpha \delta r_z$ , where  $\alpha = d_{nom}/r_{nom}$  is an adimensional scale factor. Hence, the linearized secular formation dynamics DT Embedded Model (controllable plus first-order disturbance dynamics) reads:

$$\begin{aligned} \begin{bmatrix} \mathbf{r}_w \\ \mathbf{x}_d \end{bmatrix} (i+1) &= \begin{bmatrix} A_w & I \\ 0 & I \end{bmatrix} \begin{bmatrix} \mathbf{r}_w \\ \mathbf{x}_d \end{bmatrix} (i) + \begin{bmatrix} B_w \\ 0 \end{bmatrix} \mathbf{u}(i) + \begin{bmatrix} \mathbf{w}_r \\ \mathbf{w}_d \end{bmatrix} (i), \\ \begin{bmatrix} \mathbf{r}_w \\ \mathbf{x}_d \end{bmatrix} (0) &= \begin{bmatrix} \mathbf{r}_{w0} \\ \mathbf{x}_{d0} \end{bmatrix} \quad \mathbf{y}(i) = \begin{bmatrix} I & 0 \end{bmatrix} \begin{bmatrix} \mathbf{r}_w \\ \mathbf{x}_d \end{bmatrix} (i) + \mathbf{e}_m(i), \\ A_w &= \begin{bmatrix} 1 & 0 & 0 \\ 0 & 1 & 0 \\ -12\pi & 0 & 1 \end{bmatrix}, \quad B_w = \begin{bmatrix} 0 & -\alpha/2 & 1/2 & 0 \\ \alpha/2 & 0 & 0 & 0 \\ 0 & 3\pi\alpha & -3\pi & -2 \end{bmatrix} \begin{bmatrix} T_0 \\ \omega_{nom} \end{bmatrix} \end{aligned} \quad (8)$$

In (8),  $\mathbf{r}_w$  is the controllable state vector (comprising the three states relatively to the distance variations, the mean altitude and formation mean radius deviation). The input variable  $\mathbf{u}$  is given in acceleration units. In (8) all the state variables are decoupled except the lateral perturbation pair  $d_w$  and  $\rho_{xw}$ .  $\mathbf{x}_d$  is the disturbance state sub-vector expressing the unknown disturbance dynamics states. Indeed, in order to describe the secular components (bias and drift), three first-order

stochastic dynamics were added, as above mentioned. In addition,  $\mathbf{w}_r$  and  $\mathbf{w}_d$  components play the role of arbitrary, but bounded signals driven by the model error (plant minus model output)  $\mathbf{e}_m$ . The loop is closed, thus completing the state predictor, by adding to the embedded model a static noise estimator (described by (9)). Finally, the elements of the diagonal matrix  $L \in \Re^{6 \times 3}$  are scalar gains that can be tuned via pole placement, by fixing the closed-loop eigenvalues. This allows a trade-off between fast disturbance prediction and the closed-loop predictor stability.

$$\mathbf{w} = L \mathbf{e}_m, \quad L = \begin{bmatrix} L_x & 0 \\ 0 & L_z \end{bmatrix} \quad (9)$$

Extensive simulations [3,6], have shown the IFC model to be satisfyingly robust to the initial orbit perturbations envelope for the science phase of the NGGM mission. Indeed, given the very low thrust level constraining the NGGM control design (few milli-Newtons), stability and drift issues may affect some formation variable in case of a set of initial conditions non optimal for starting the NGGM mission science phase. Specifically, issues of this kind can arise after: (i) poor/missing formation and orbit acquisition, (ii) pre-science control modes transition.

## 5. Orbit and Formation Control

In this section, the synthesis of the IFC control law will be addressed. The total linear control action is organized in a hierarchical way. The inner loop is the drag-free control (see Section 3); the outer loop is the orbit/formation control. The actuation time is sampled at the shortest time unit  $T = 0.1s$  which is imposed by drag-free control. Therefore, at each control step, the drag-free command is dispatched to the plant, while, at each navigation or orbital step, the IFC part of the command adds up to the drag-free one.

Concerning the IFC, the control algorithms are organized around the above described embedded model (see Section 4). The IFC control law is the combination of a feedback term and a disturbance rejection term.

The disturbance rejection term is responsible for the embedded model stabilization. Indeed, given the unitary eigenvalues of the disturbance dynamics in (8), the rejection of the estimated disturbances is needed to make the closed-loop system BIBO stable.

The IFC feedback command portion is the result of two combined control strategies. Specifically, the proposed solution is a multi-hierarchical structure of the feedback control law able to prevent that the formation rate variables, uncontrollable by the low-frequency control of the DT IFC in (8), could affect the





hierarchical and frequency coordinated angular control law will be synthesized, also pointing out some criticalities possibly affecting current requirements [7].

At the system level, broadly speaking, the attitude control helps to minimize drag-free commands and is responsible to align satellite-to-satellite line to the laser beam (pointing control). As a matter of fact, a pointing control able to align the satellites optical axis is compulsory to measure, via laser interferometry, the inter-satellite distance variations, i.e. the scientific measurable of the mission. At this proposal, the attitude control, during the mission science phase, leverages a laser beam materialization of the SSL. Each spacecraft is supposed to be equipped with the same laser and optical metrology mechanism respectively launching a laser beam and receiving the beam coming from the companion satellite. Specifically, the optical metrology sensor measures the 2D tilt (pitch and yaw) of the incoming laser beam launched by the companion satellite. Further, attitude control is actuated by the same propulsion assembly (all-propulsion satellite) responsible for the linear control action and consisting of eight small proportional thrusters capable of a few milli-Newtons thrust. Therefore there is no pointing mechanism to steer the laser beam [3]. Conversely the satellite-to-satellite pointing is characterized by quite strict requirements, as highlighted in Table 1. Conversely, all along the pre-science mission phases, the attitude control is constrained by looser requirements and leverages coarser attitude sensors, like Sun and Earth sensors or star trackers.

The attitude kinematics and dynamics equations used in the control design are based on the definition of a control reference frame, whose origin is in the satellite CoM, in addition to the FLOF frame. The first axis of the control frame is defined by the optical metrology in the motion direction, whereas the second axis is close to the axis of the accelerometer pair.

The attitude control objective is to reach the alignment of the control quaternion  $\mathbf{q}_{ck}$ , describing the attitude of the satellite control frame with reference to inertial frame, to the FLOF frame quaternion  $\mathbf{q}_o$  with an accuracy of the order of micro-radians to enable laser interferometry. The wide-band angular drag-free control helps the pointing control action by zeroing the total angular acceleration. The accurate body frame alignment to FLOF allows one to confuse body and FLOF components in the control assumptions. For instance accelerations can be assumed to be measured in the FLOF frame. Similarly, the alignment of orbital and body frames allows coupling between orbit and attitude to be neglected in the control design and treated as a disturbance component.

The attitude model can be described by the vector  $\mathbf{0}_k$  of small 3-2-1 Euler angles  $\{\varphi_k, \theta_k, \psi_k\}$  between FLOF and control frame. The pointing control requirements concern mainly the pitch and yaw, while the attitude first component requirements is less stringent. Therefore, the relative attitude quaternion  $\mathbf{q}_k$  between the control frame and the FLOF frame reads:

$$\mathbf{q}_k = \mathbf{q}_o^{-1} \otimes \mathbf{q}_{ck} \quad (11)$$

whereas attitude quaternion kinematics is:

$$\dot{\mathbf{q}}_k(t) = \mathbf{q}_k(t) \times \boldsymbol{\omega}_k / 2 \quad (12)$$

where  $\boldsymbol{\omega}_k$  is the local satellite angular rate, in control coordinates. The formulation in (12) holds also for the FLOF quaternion, via the FLOF angular rate vector  $\boldsymbol{\omega}_o$ . The FLOF angular rate can be estimated, provided that some reliable satellite GNSS measures are available. Finally, the satellite dynamics may be described by:

$$\dot{\boldsymbol{\omega}}_k(t) = J^{-1}(\mathbf{M}_c(t) + \mathbf{M}_d(t)) + h(\boldsymbol{\omega}_k, \boldsymbol{\omega}_o, \mathbf{q}_k)(t) \quad (13)$$

where  $J$  is the inertia tensor,  $\mathbf{M}_c$  and  $\mathbf{M}_d$  are respectively the command and disturbance torques (in control coordinates), whereas  $h(\cdot)$  accounts for the FLOF frame rotation. By pursuing the alignment of control and FLOF frames the relative attitude quaternion  $\mathbf{q}_k$  should approach the unit quaternion, while  $\dot{\boldsymbol{\omega}}_{ck} \approx 0$  due to the angular drag-free control action.

Consequently, the control design requires a reliable estimation of FLOF quaternion, angular rate and acceleration [9]. According to the EMC methodology, the attitude control unit is based on a discrete-time version of (12) and (13). Specifically the FLOF state observer consists of the quaternion kinematics and of a third order stochastic angular rate model, where the state variables are angular rate, angular acceleration and jerk. The attitude state observer relies on the same equations than the FLOF one, but also the attitude command and the FLOF acceleration are part of the model.

Concerning the control law, similarly to the total linear command, the angular command  $\mathbf{a}_u$  (in angular acceleration units) will be the sum of the drag-free control action  $\mathbf{a}_{df}$  and the attitude and pointing one



altitude  $r_z$  and formation mean radius deviation along the SSL  $r_x$ ) with respect to their reference values. All the variables evolution is within the bound that corresponds to the fractional requirement reported in Table 1.

The simulated total linear command, including both linear drag-free command and orbit/formation command is showed in Figure 8. The total longitudinal component (x, in red) includes the longitudinal drag compensation that becomes the largest component when formation transient vanishes. After the transient, the required thrust authority is well below a level of 3 mN. An overall optimization of the control gains may be beneficial to the improvement of the transient behavior, as shown from the preliminary simulated results.

Finally, the simulated PSD of the attitude tilt angles is presented in Figure 9. Both satellite pitch and yaw angle PSD meet the requirement bound with some margin. Therefore, the pointing control unit enables the satellites mutual alignment along the SSL line with the desired mrad precision level.

However, as already stated, in the medium frequencies region the margin is quite reduced. This is coherent with the theoretical considerations underlining how in the critical region  $1\text{mHz} < f < 10\text{mHz}$  the attitude objectives are quite contrasting each other. At this proposal, the star tracker noise can be better filtered than the optical sensors, thus enlarging the margin for  $f > 10\text{mHz}$  but, as a preliminary conclusion, the low-frequency pointing bound should be enlarged to introduce some margin.

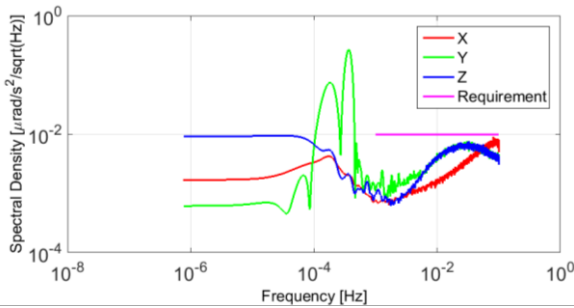


Fig. 6. Simulated PSD of the angular non-gravitational residuals

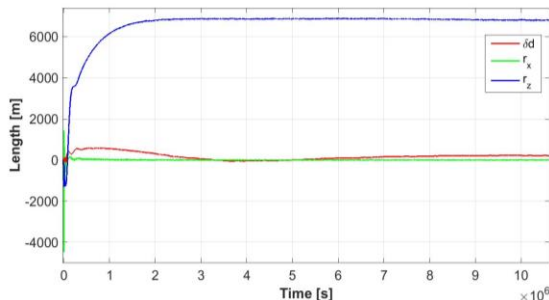


Fig. 7. Formation variable perturbations (formation mean tracking errors)

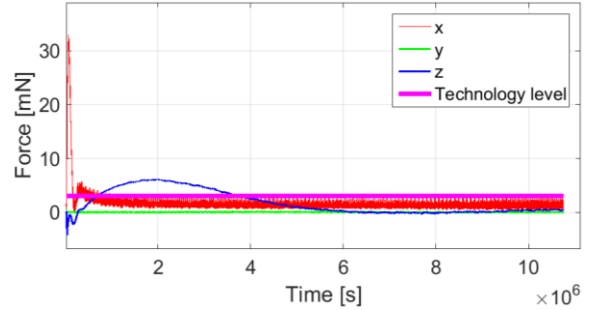


Fig. 8. Simulated total linear command

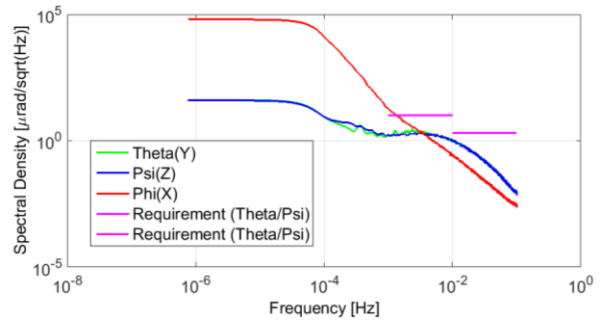


Fig. 9. Simulated PSD of the attitude 2D pointing

## 5. Conclusions

In summary, we have presented an outline of the AOCS design for the future formation gravity missions, like NGGM under study by ESA. This design was based on the Embedded Model Control Methodology, which employs three model classes to account for the uncertainty affecting models.

Then, the mandatory design in terms of disturbance dynamics, their measurement and rejection for the formation and drag-free control has been described.

The design of the orbit and formation control was tackled through the innovative concepts of formation triangle and formation local orbital frame (FLOF). This leads to a new set of CW-type equations, suitable to design a formation control which is capable of controlling in an integrated way distance and altitude. An enhanced multi-rate and multi-hierarchical formation control architecture was studied to overcome the possible weaknesses concerning the formation stability in some orbital conditions. Specifically, we envisages a combination of two different control strategies actuating at very different time units. The secular perturbations, below the orbital period, are addressed by a low-frequency feedback loop leveraging formation position variables. Then, a further feedback loop was added, involving the formation rate variables and aiming at ensuring their stability.

Also the rationale and the most relevant aspects of the formation attitude control have been outlined. The formation attitude design was based on the independent pointing control of each satellite, given proper optical sensors measuring the satellite misalignment from the satellite-to-satellite line. Pointing control must be coordinated with the angular drag-free control in hierarchical way.

Extensive simulated results, run via a high fidelity simulator, proved the validity of the design concept and showed how the control performance level meets the mission requirements.

### Acknowledgements

Part of this research was carried out within the study Next Generation Gravity Mission (NGGM): AOCS Solutions and Technologies study and within the ESA Networking Partner Initiative (NPI) PhD project Laser Metrology Spacecraft Formation (Ref. 4000109653/13/NL/MH) funded by the European Space Agency; Thales Alenia Space Italy (Turin) being the prime contractor.

The first author would like to thank the Italian Space Agency (ASI) and the Space Generation Advisory Council (SGAC) for funding the participation to this conference, within the ASI-SGAC grant 2016 initiative.

### References

- [1] European Space Agency website - ESA's gravity mission, [http://www.esa.int/Our\\_Activities/Observing\\_the\\_Earth/GOCE](http://www.esa.int/Our_Activities/Observing_the_Earth/GOCE), (accessed 30.08.16).
- [2] GFZ Potsdam website - The GRACE Mission, <http://op.gfz-potsdam.de/grace>, (accessed 30.08.16).
- [3] A. Bacchetta, M. Buonocore, S. Cesare, S. Dionisio, M. Parisch, E. Canuto, B. Girouart, L. Massotti, The Results of the AOCS Solutions and Technologies study for the Next Generation Gravity Mission, AIAA Guidance, Navigation, and Control Conference, AIAA SciTech, (AIAA 2015-1556).
- [4] E. Canuto, C.P. Montenegro, L. Colangelo, M. A. Lotufo, Active Disturbance Rejection Control and Embedded Model Control: A case study comparison, In Proceedings of the 33<sup>rd</sup> Chinese Control Conference, 2014.
- [5] E. Canuto, C.P. Montenegro, L. Colangelo, M. A. Lotufo, Embedded Model Control: Design separation under uncertainty, In Proceedings of the 33<sup>rd</sup> Chinese Control Conference, 2014.
- [6] E. Canuto, L. Colangelo, M. Buonocore, L. Massotti, B. Girouart, Orbit and formation control for low-earth-orbit gravimetry drag-free satellites, Proceedings of the Institution of Mechanical

Engineers, Part G: Journal of Aerospace Engineering 229(7) 2014 1194-1213.

- [7] E. Canuto, L. Colangelo, M. A. Lotufo, S. Dionisio, Satellite-to-satellite attitude control of a long-distance spacecraft formation for the Next Generation Gravity Mission, European Journal of Control, Volume 25, September 2015, Pages 1-16, ISSN 0947-3580.
- [8] E. Canuto, Drag-free and attitude control for the GOCE satellite, Automatica, 44(7) 2008 1766-1780.
- [9] E. Canuto, L. Colangelo, Angular drag-free control and fine satellite-to-satellite pointing for the Next Generation Gravity Missions, European Control Conference (ECC), Strasbourg, 2014, 3017-3022.