

INTERACTIVE VISUALIZATION TOOL (INVITO): A WEB VISUAL TOOL FOR SHARING
INFORMATION IN TERRITORIAL DECISION-MAKING PROCESSES

Original

INTERACTIVE VISUALIZATION TOOL (INVITO): A WEB VISUAL TOOL FOR SHARING INFORMATION IN
TERRITORIAL DECISION-MAKING PROCESSES / Abastante, Francesca; Pensa, Stefano; Masala, Elena;
Gagliarducci, Riccardo. - In: NEWDIST. - ISSN 2283-8791. - ELETTRONICO. - 1:(2016), pp. 113-121. (Intervento
presentato al convegno Towards post carbon cities tenutosi a Torino nel 18-19 Febbraio 2016).

Availability:

This version is available at: 11583/2643472 since: 2020-02-11T15:34:07Z

Publisher:

DIST, Politecnico di Torino

Published

DOI:

Terms of use:

This article is made available under terms and conditions as specified in the corresponding bibliographic description in
the repository

Publisher copyright

(Article begins on next page)



new Dist

SPECIAL ISSUE
JULY 2016
ISSN 2283-8791

SBE16 Towards Post-Carbon Cities | 2



DIPARTIMENTO INTERATENEEO DI SCIENZE
PROGETTO E POLITICHE DEL TERRITORIO
POLITECNICO E UNIVERSITÀ DI TORINO

INTERACTIVE VISUALIZATION TOOL (INVITO): A WEB VISUAL TOOL FOR SHARING INFORMATION IN TERRITORIAL DECISION-MAKING PROCESSES

Authors

Stefano PENSA

stefano.pensa@polito.it

DAD - Department of
Architecture and Design
Politecnico di Torino
Viale Pier Andrea Mattioli, 39
10125 Turin (Italy)

Elena MASALA

elena.masala@polito.it

SiTI - Higher Institute on
Territorial Systems for
Innovation
Via P.C. Boggio 61
10138 Turin (Italy)

Francesca ABASTANTE

francesca.abastante@polito.it

DIST - Inter University
Department of Regional and
Urban Studies and Planning
Politecnico di Torino
Viale Mattioli, 39
10125 Turin (Italy)

Riccardo GAGLIARDUCCI

riccardo@brixel.it

Brixel
Via Valprato, 68
10155 Turin (Italy)

Keywords

geovisualization
decision support systems (DSS)
InViTo
WebGIS
decision processes
territorial planning

Abstract

Territorial planning is the focus of considerable debates, which often develop into uncertain and vulnerable decision contexts.

Numbers and quantitative information in fact often dominate the process of decision-making but they are not easily comprehensible through quick and simple reasoning. Nonetheless, the huge quantities of data that describe our cities and regions could provide excellent bases to analyze spatial data in order to assess territories and simulate future development scenarios.

The application of innovative digital tools in the analysis of urban issues offers new advantages and opportunities for the improvement of communication values in policies and decision-making processes, concurring to overcome conventional approaches to territorial management.

The paper describes the application of the Interactive Visualization Tool (InViTo), a web tool based on maps and visual analysis allowing data to be filtered, explored, interconnected and compared on a visual interface.

Data visualization, intended as the way to see the unseen (McCormick et al., 1987), is here used as a new paradigm to highlight the positive and negative effects on spatial systems considering the impacts of choice-alternatives along multiple dimensions. The correlation between information and their localization generates an essential instrument for the knowledge of urban dynamics and resilience in answering to specific policies.

The investigation of a number of case studies shows the possibilities and opportunities given by the use of InViTo in creating a shared knowledge between actors involved in decision-making processes and in offering a challenge for integrating new perspectives on the analysis of future cities and regions.

1_Introduction

The on-going urbanization has lead to an increased focus on cities (UN, 2012) highlighting their inability to offer adequate facilities to their population. In fact, such complex congregation of people tend to become disordered places (Johnson, 2008) generating sets of material and non-material problems. The first set comprises among others difficulty in waste management, scarcity of resources, traffic congestions, aging infrastructures and energy management (Borja, 2007; Marceau, 2008; Toppeta, 2010; Washburn et al., 2010). The set of non-material problems are instead related to social and organisational matters associated "with multiple and diverse stakeholders, high levels of interdependence, competing objectives and values as well as social and political complexity" (Johnson, 2008; Weber and Khademian, 2008; Dawes et al., 2009; Chourabi et al., 2012).

In this sense, urban and social issues can be considered as "wicked problems" (Rittel & Webber, 1973) creating potential conflicts and unanticipated effects. Due to the complexity of the cities, the mission of an urban project is never so clear including a wide number of data, variables, parameters, indexes and qualitative elements usually barely measurable.

Moreover, while in the past one of the difficulties in urban planning was the lack of data-measuring activities, nowadays the problem is the opposite: there is a huge amount of quantitative and qualitative data but they are often

difficult to read. Therefore, databases need to be not simply able to visualise data but also to extract and process usable information (Belton and Pictet, 1997; Mingers and Rosenhead, 2004; Belton and Stewart, 2010; White, 2006; Montibeller et al., 2008; Pensa et al., 2014; Lami and Franco, 2016).

The application of Information and Communication Technology (ICT) is often mentioned as part of the solution to those complex problems and the term 'smart city' is increasingly being used in this context (Hilty et al., 2011; Lövehagen and Bondesson, 2013).

However, despite that ICT are definitely enhancing the opportunities for spatial planning changing the common vision of the social inclusion (Goodspeed, 2011; 2012; Resch, Summa, Sagl, Zeile, & Exner, 2014;) they often present huge difficulties in being applied in daily practice (te Brömmelstroet, 2010; Vonk, Geertman, & Schot, 2005): 1) it takes a long time to calculate results which hinder the interaction between data models and users; 2) data models generally have low flexibility to adjust to specific needs; 3) most of these support systems have limited abilities in communication.

Communication is in fact one of the main features to be considered when talking about effectiveness of ICT for smart cities but the approach of communication by simply "writing down your objectives and stating your priorities, is inadequate for decisions worthy of thought" (Keeney, 2013; Lami et al., 2014). Thus, spatial planning is currently encountering new approaches to the use of technology. In particular, both the academic researchers and professionals are increasing their interest in data-driven methods (Kamenetz, 2013; Lanzerotti, Bradach, Sud, & Barmeier, 2013; Kokalitcheva, 2014) investigating new tools in order to allow information to be easily extracted from data and disclosed to the stakeholders involved in a urban planning process (Bawa-Cavia, 2010; Neuhaus, 2011; Chua, Marcheggiani, Serrvillo, & Vande Moere, 2014).

In this context, the paper investigates three case studies describing the application of the Interactive Visualization Tool (InViTo). InViTo is a web tool based on maps and visual analysis allowing data to be filtered, explored, interconnected and compared on a visual interface (Pensa et al., 2014). The aim of InViTo is to built a shared basis of discussion among the actors involved being interactive in order to allow adjustments during a urban processes. Furthermore, InViTo offers a way to represent different typologies of geo-referenced data and to combine them in order to visualise the "hidden connections" (Dodge, 2005) among these data.

After the introduction the paper is organized as follows: section 2 reports the methodology adopted focussing on the development of the InViTo tool; section 3 shows some examples of applications of InViTo; finally, the conclusions resume the potentialities of the methodology adopted and further developments.

2_Methodology

2.1_The InViTo tool

Developed in 2011 (Pensa and Masala, 2014) as a visual support for spatial planning and decision-making processes, InViTo is conceived as a toolbox for supporting the analysis, the exploration, the visualisation and communication

The structure of the front interface can be in turn divided into three subsections: data filtering, map weighting and data visualization.

The **data filtering** section allows data to be interactively selected and filtered by the end users in order to customise the visualisation. Despite basically InViTo works as other GIS viewers, it does not visualise only the different layers of a set of data, but it allows users to explore the single records of a dataset by the use of different kind of pre settled filters. Moreover, the filters can be grouped in panels, so that the visualisation can be driven through a particular path to follow. Moreover, InViTo allows data to be investigated at different levels with also intersection of attributes, in order to analyse data clusters in relation to specific parameters. In this sense, InViTo overcome the data-map representation to arrive to the visualisation, intended as the discipline to see the unseen (McCormick, De Fanti, & Brown, 1987).

The **map weighting** section allows the filtered maps to be overlapped and weighted on the basis of their priority. The aim of the map weighting section is to provide users with a tool for analysing the localisation of expected effect of specific elements and evaluating the sum of effects on the basis of a specific mathematical curve associated to the layers. This section is an on-going part of the research. In fact, the map weighting is currently based on the sum of maps as in the basic methodology of Multicriteria Decision Analysis (MCDA - Figueira et al., 2005). Further developments of InViTo will improve this section in order to integrate the opportunity to develop MCDA directly in the tool as the spatial Multicriteria Analyses combining GIS and MCDA (Malczewski, 1999; Ferretti, 2013).

The **data visualization** settings allows a high level of customization on colours, dimensions, styles, map styles (between Open Street Maps or different Google Maps styles) and on a series of utilities by means of which the tool is expected to offer a wide range of possibilities for users to improve their analytical skills and enhancing the discussion. Furthermore, users can visualize tables and charts showing data according to the filters activated in the filtering section. The tables show the attributes related to the filtered data, providing pre settled additional information field by field. The charts show the values of the filtered data in relation to the whole set of data, highlighting the selected geometries.

The distinctive features of InViTo are therefore dynamicity and interactivity, which make it open to variously skilled users and suitable to be part of instrumental equipment for meetings and workshops. In fact, it can be used by a single person or collectively during discussion sessions. In this case the displayed map can become the interface for sharing opinions and reasoning. In fact, its quick responses and visual interface offers possibilities for improving the discussion among people, providing a shared basis for enhancing the debate.

3_Case studies

Spatial decisions and policymaking processes affect, or can affect, the geography of an area at different spatial scales. This can happen with a very wide spectrum of consequences, which can be studied by different discipline



Figure 2. The use of InViTo during the second SINERGI workshop, Turin, June 2015: identification of an existing infrastructural lack (left) and checking of a design idea for a new road (right).

fields such as urban planning, transport planning, mobility, environment, social and economic sciences. The InViTo structure was conceived as open as possible in order to avoid constraints in the use of the tool. Thus, it can be used for dealing with different case studies, with different purposes and afferent to various disciplines. The following three case studies show some example of applications of InViTo.

3.1 SINERGI project

The Social Inclusion through Urban Growth Strategies (SINERGI) is a project funded by the “Europe for Citizens” programme. It involved four cities as Skopje, Lisbon, Turin and Zagreb, in a number of seminars and workshops oriented to the improvement of the process of social inclusion within the urban planning.

In order to achieve the project objective, InViTo has been chosen to perform the SINERGI workshops. The first workshop was held in Skopje in December 2014 and was focused on the evaluation of three infrastructural scenarios for an urban area in the same city. The second workshop was held in Turin in June 2015 and concerned the renewal of a huge dismissed urban area with an industrial past and many future projects insisting on it (Figure 2).

Both the workshops had a diversified public, composed by city administrators, technicians, academics, students and social representatives. A number of discussions emerged outlining possibilities and opportunities given by the use of interactive maps designed to facilitate and improve the interaction between the information and the actors involved in the planning process.

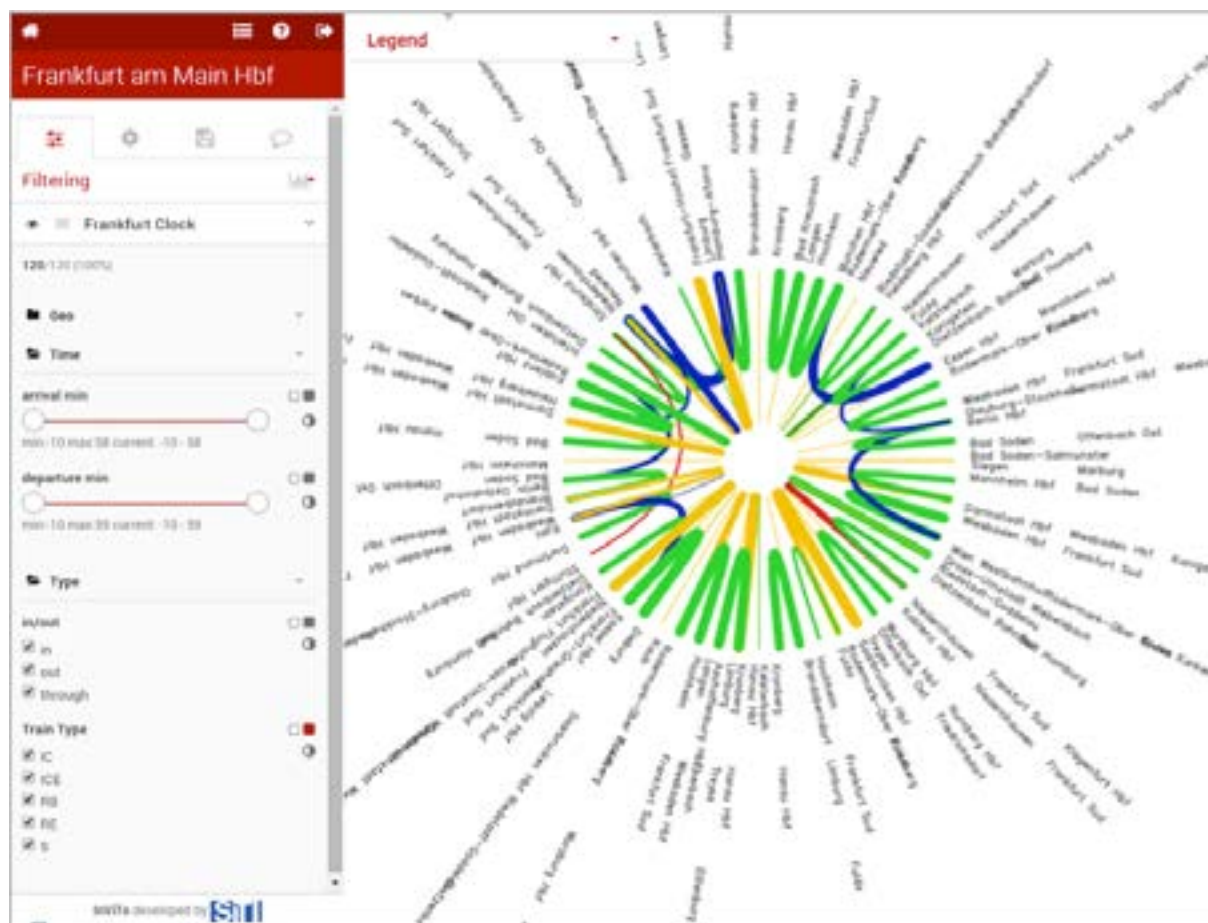
The tool has been used to detect critical areas and areas with more opportunities. After the discussion of some design alternative options, InViTo has been applied to evaluate “what if” scenarios. The outcome provided by the tool gave no solutions, but opportunities for the participants involved in the workshops to discuss and elaborate a shared solution.

3.2 CODE24 project

During an Interreg IVB NWE Project named “CoDe24” (INTERREG IVB NWE, 2005; ERDF European Territorial Cooperation 2007-2013, 2010), the Interactive Visualisation Tool has been used for several events and purposes. One of these concerned the exploration of the total number of trains arriving and departing from the Frankfurt am Main railway station between 8.00 a.m. and 9.00 p.m. of a common working day (Figure 3).

The visualisation of data is interactive. Users can choose the setting and filtering of a number of parameters, such as the train typologies, the city of origin or the city of destination. Unlike other projects, in this case the represented data are not spatial. They are organized within an info-graphic without background maps or geographical references. The geographic information is restricted in the selection of filters.

The online use of this application provided the possibility to share the information between the partners of the project. Furthermore, it generated an intuitive visualisation of the railway connections of an important city like Frankfurt am Main, the train arriving, outgoing or passing by the city, the typology of the trains and the possible integrations among the different trains.



Colours and thickness of lines change according to the setting made by the users, providing further information on the selected elements.

Figure 3. The use of InViTo for visualising the railway connections of Frankfurt am Main between 8.00 a.m. and 9.00 p.m.

3.3 Tweets in Barcelona

A third case study concerns the visualization of tweets sent from the metropolitan area of Barcelona in the period January 7-19, 2015. The research is part of the TUD COST Action TU1306 - Fostering knowledge about the relationship between Information and Communication Technologies and Public Spaces supported by strategies to improve their use and attractiveness (CYBERPARKS). The objective of the research was the improving of the design of public open spaces by means of information captured by the analysis of user-generated data.

The data collected from Twitter have been elaborated and uploaded in InViTo. The visualisation allows users to interact with a large amount of data (more than 67.000 records) and to understand the urban patterns generated by Twitter's users by the self-exploration.

The large amount of maps that can be obtained by such a data exploration is sufficient to identify several urban patterns and understand some dynamics on the use of the city. In particular, the tool showed to be very important for analysing the tweets following both a spatial and a temporal logic. The differences in tweets spatial distribution according to the temporal period selected provided new insights on the analysis of the city. These outcomes highlighted a number of issues related to the tourism and the use of the city in relation to the origin country of people visiting Barcelona.

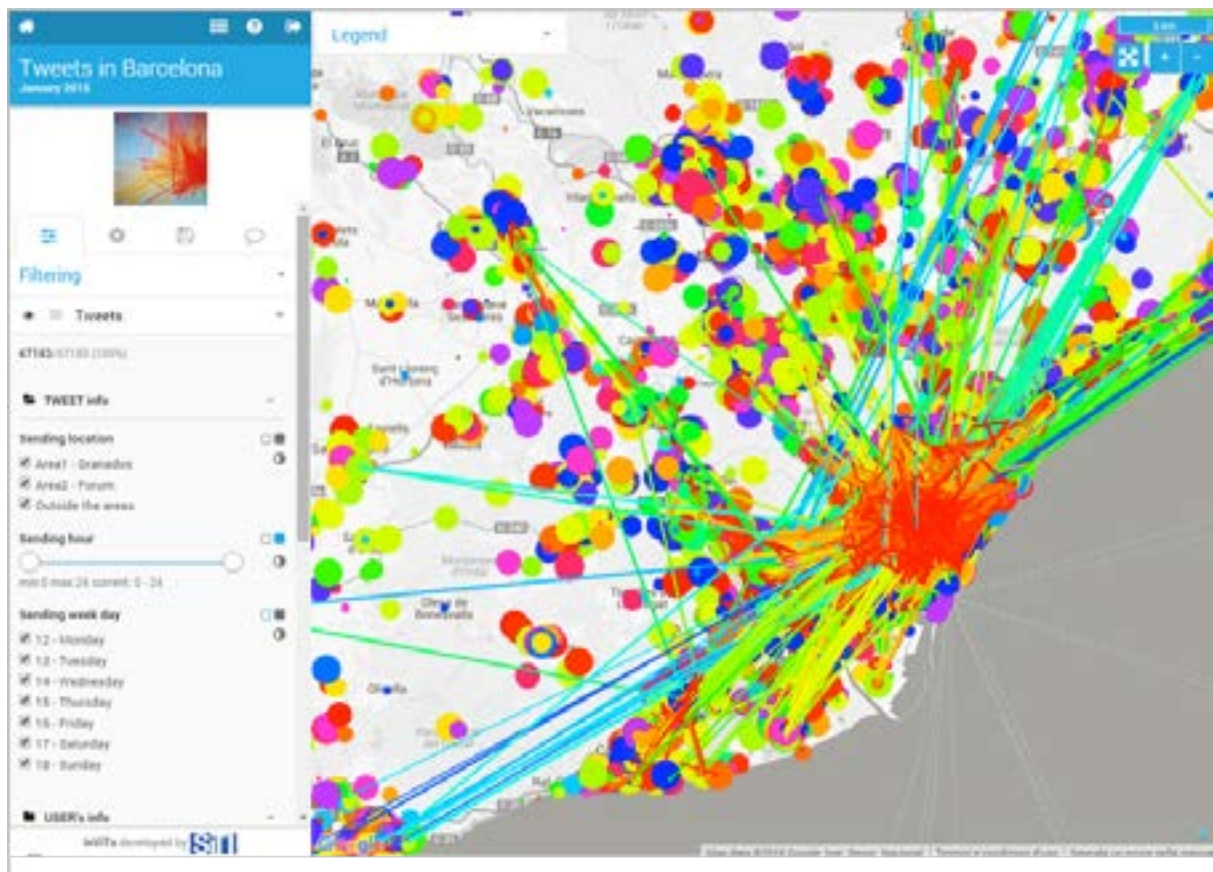


Figure 4. The visualisation of Twitter Data in Barcelona, collected in January 2015.

4 Conclusions

The three case studies are a small example of possibilities in applying the tool. The high level of customisation of the filtering and weighting sections as well as of the visualisation provide a large amount of opportunities for the information sharing between large groups of people. The use of visualisation goes against a technocratic vision of cities and increases the power of experts. It allows planners, city administrators, technicians, but also common citizens, to improve their awareness of urban problems. A higher knowledge enhances the decision-making process, providing opportunities for better choices.

Furthermore, a high flexibility of the tool allows the instrument to be adapted to the case study and not, as often, the planning adapted to the possibilities given by the tool. By this way, the urban tool is not a constraint but a real support to the urban planning.

Future developments of InViTo will foresee the improvement of the MCDA section currently drafted in the tool in order to better weight the maps provided and enhance the usability of InViTo in supporting urban planning.

5 References

- Bawa-Cavia A. 2010, *Sensing the Urban. Using location-based social network data in urban analysis*, 1st workshop on Pervasive Urban Applications PURBA '11. San Francisco.
- Belton V., Pictet J. 1997, A framework for Group Decision Using MCDA model: Sharing, Aggregating or Comparing individual Information? *Journal of decision systems* 6(3), pp. 283-303.

- Belton V., Stewart T. 2010, Problem Structuring and Multi Criteria Decision Analysis. In: Hergot et al. (eds.), *Trends in Multiple Criteria Decision Analysis*, International Series in Operations Research and Management Science, 142. Springer Science and Business Media, pp. 209-239.
- Borja J. 2007, Counterpoint: Intelligent cities and innovative cities, *E-Journal on the Knowledge Society*, 5. Available at <http://www.uoc.edu/uocpapers/5/dt/eng/mitchell.pdf>.
- Chourab H., Nam T., Walker S., Gil-Garcia J., Mellouli S., Nahon K., Pardo T.A., Scholl H.J. 2012, Understanding smart cities: an integrative framework, in: *System Science (HICSS)*, 45th Hawaii International Conference on, Grand Wailea, Maui, Hawaii, pp. 2289-2297.
- Chua A., Marcheggiani E., Serrvillo L., Vande Moere A. 2014, FlowSampler: Visual Analysis of Urban Flows in Geolocated Social Media Data. In M. Aiello, & D. McFarland (Eds.), *International Conference on Social Informatics*. Barcelona.
- Dodge M. 2005, *Information Maps: Tools for Document Exploration*, CASA, working paper series 94. University College London, London, Retrieved November 5, 2013, from <http://www.bartlett.ucl.ac.uk/casa/publications/working-paper-94>.
- Ferretti V. 2013, Le Analisi Multicriteri spaziali a supporto delle procedure di pianificazione e valutazione: analisi e classificazione della letteratura scientifica, *Geoingegneria Ambientale e Mineraria* (2), pp. 53-66.
- Figueira J., Greco S., Ehrgott M. 2005, *Multiple Criteria Decision Analysis: State of the Art Surveys*, Boston, Dordrecht, London: Springer Verlag.
- Goodspeed R. 2011, *The Coming Urban Data Revolution*, Retrieved January 8, 2015, from Planetizen: <http://www.planetizen.com/node/51158>.
- Goodspeed R. 2012, *The Democratization of Big Data*, Retrieved January 2015, 02, from Planetizen: <http://www.planetizen.com/node/54832>.
- Hilty L., Lohmann W., Huang E. 2011, Sustainability and ICT - An overview of the field with focus on socio economic aspects, *Notizie di Politeia* 17(104), pp. 13-28.
- Kamenetz A. 2013, *How Cities Are Using Data To Save Lives*, Retrieved January 13, 2015, from Fast company: <http://www.fastcoexist.com/3021498/how-cities-are-using-data-to-save-lives>.
- Keeney R.L. 2013, Identifying, prioritizing and using multiple objectives, *EURO Journal on Decision Processes* 1, pp. 45-67.
- Kokalitcheva K. 2014, *How a swarm of data is helping Chicago re-map urban life*, Retrieved January 12, 2015 da Venture Beat: <http://venturebeat.com/2014/05/14/how-a-swarm-of-data-is-helping-chicago-re-map-urban-life>.
- Johnson B. 2008, Cities, systems of innovation and economic development. *Innovation: Management, Policy & Practice* 10(2-3), pp.146-155.
- Lami I.M., Abastante F., Bottero M., Masala E., Pensa S. 2014, Integrating multicriteria evaluation and data visualization as a problem structuring approach to support territorial transformation projects, *EURO Journal on Decision Processes* 2(3-4), pp. 281-312.
- Lami I.M., Franco L.A. 2016, Exploring the Affordances of Collaborative Problem-Solving Technologies in the Development of European Corridors, in: H., Drewello, & B., Scholl (Eds.), *Integrated Spatial and Transport Infrastructure Development: The case of European North-South Corridor Rotterdam-Genoa*, pp. 65-80, London: Springer Publishers.
- Lanzerotti L., Bradach J., Sud S., Barmeier H. 2013, *Geek Cities: How Smarter Use of Data and Evidence Can Improve Lives*, Retrieved January 13, 2015 in The Bridgespan Group: <http://www.bridgespan.org/Publications-and-Tools/Performance-Measurement/Geek-Cities-Data-Improves-Lives.aspx#.VLZ9BSvF9Ks>.
- Lövehagen N., Bondesson A. 2013, Evaluating sustainability of using ICT solutions in smart cities - methodology requirements, in: M. Hilty, B. Aebischer, G. Andersson, W. Lohmann (Eds.), *ICT4S 2013: Proceedings of the First International Conference on Information and Communication Technologies for Sustainability*, Switzerland, Zurich, pp. 184-191.

- McCormick B.H., De Fanti T.A., Brown M.D. 1987, Visualization in Scientific Computing, *Computer Graphics*, 21(6).
- Malczewski J. 1999, *GIS and Multicriteria Decision Analysis*, John Wiley and Sons, New York.
- Marceau J. 2008, Introduction: Innovation in the city and innovative cities, *Innovation: Management, Policy & Practice* 10(2-3), pp. 136-145.
- Mingers J., Rosenhead J. 2004, Problem structuring methods in action, *European Journal of Operational Research* 152, pp. 530-554.
- Montibeller G., Belton V., Ackermann F., Ensslin L. 2008, Reasoning maps for decision aid: an integrated approach for problem-structuring and multi-criteria evaluation, *Journal of the operational research society* 59, pp. 575-589.
- Neuhaus F. 2011, Twitter Data - Seeking Spatial Pattern. Retrieved January 09, 2015, from UrbanTick: [http://urbantick.blogspot.it/2011/03/twitter-data-seeking-spatial-pattern.html?utm_source=feedburner&utm_medium=feed&utm_campaign=Feed:+urbantick+\(urbanTick\)](http://urbantick.blogspot.it/2011/03/twitter-data-seeking-spatial-pattern.html?utm_source=feedburner&utm_medium=feed&utm_campaign=Feed:+urbantick+(urbanTick)).
- Pensa S., Masala E., Lami I.M., Rosa A. 2014, Seeing is knowing: data exploration as a support to planning, *Proceedings of the ICE - Civil Engineering* 167(5), pp. 3-8.
- Pensa, S., Masala, E. 2014, InViTo: An Interactive Visualisation Tool to Support Spatial Decision Processes. In: N.N. Pinto, J.A. Tenedorio, A.P. Antunes, & J.R. Cladera (Eds.), *Technologies for Urban and Spatial Planning: Virtual Cities and Territories*, Hershey, PA: IGI Global Book, pp. 135-153.
- Resch B., Summa A., Sagl G., Zeile P., Exner J.P. 2014, *Urban Emotions - Geo-semantic Emotion Extraction from Technical Sensors, Human Sensors and Crowdsourced Data*, Heidelberg: German Research Foundation (DFG - Deutsche Forschungsgemeinschaft).
- Rittel H.W.J., Webber M. 1973, Dilemmas in a general theory of planning, *Policy Sciences* 4, pp. 155-169.
- te Brömmelstroet M.C. 2010, Equip the warrior instead of manning the equipment: Land use and transport planning support in the Netherlands, *Journal of Transport and Land Use* 3, pp. 25-41.
- Toppeta D. 2010, *The Smart City Vision: How Innovation and ICT Can Build Smart, "Livable", Sustainable Cities*. The Innovation Knowledge Foundation. Available at http://www.thinkinovation.org/file/research/23/en/Toppeta_Report_005_2010.pdf.
- United Nations 2012, *The future we want, Cities, fact sheet for the Rio United National Conference on Sustainable Development*, Rio de Janeiro, Brazil, June 20-22, 2012, Accessible at http://www.un.org/en/sustainablefuture/pdf/Rio+20_FS_Cities.pdf.
- Vonk G., Geertman S., Schot P. 2005, Bottlenecks blocking widespread usage of planning support systems, *Environment and Planning A* 37(5), pp. 909-924.
- Weber E.P., Khademian A.M. 2008, Wicked problems, knowledge challenges, and collaborative capacity builders in network settings, *Public Administration Review* 68(2), pp. 334-349.
- Washburn D., Sindhu U., Balaouras S., Dines R.A., Hayes N.M., Nelson L.E. 2010, *Helping CIOs Understand "Smart City" Initiatives: Defining the Smart City, Its Drivers, and the Role of the CIO*, Cambridge, MA: Forrester Research, Inc.
- White L. 2006, Evaluating Problem-Structuring Methods: Developing an Approach to Show the Value and Effectiveness of PSMs, *The Journal of the Operational Research Society* 57(7), pp. 842-855.