

A qualitative explanation of the origin of torsional instability in suspension bridges

Original

A qualitative explanation of the origin of torsional instability in suspension bridges / Berchio, Elvise; Gazzola, Filippo. - In: NONLINEAR ANALYSIS. - ISSN 0362-546X. - STAMPA. - 121:(2015), pp. 54-72. [10.1016/j.na.2014.10.026]

Availability:

This version is available at: 11583/2624906 since: 2016-09-13T17:04:05Z

Publisher:

Elsevier

Published

DOI:10.1016/j.na.2014.10.026

Terms of use:

openAccess

This article is made available under terms and conditions as specified in the corresponding bibliographic description in the repository

Publisher copyright

(Article begins on next page)

A qualitative explanation of the origin of torsional instability in suspension bridges

Elvise BERCHIO [#] - Filippo GAZZOLA [†]

[#] Dipartimento di Scienze Matematiche-Politecnico di Torino-Corso Duca degli Abruzzi 24-10129 Torino, Italy

[†] Dipartimento di Matematica - Politecnico di Milano - Piazza Leonardo da Vinci 32 - 20133 Milano, Italy

elvise.berchio@polito.it, filippo.gazzola@polimi.it

Dedicated to Enzo Mitidieri, on the occasion of his 60th birthday.

Abstract

We consider a mathematical model for the study of the dynamical behavior of suspension bridges. We show that internal resonances, which depend on the bridge structure only, are the origin of torsional instability. We obtain both theoretical and numerical estimates of the thresholds of instability. Our method is based on a finite dimensional projection of the phase space which reduces the stability analysis of the model to the stability of suitable Hill equations. This gives an answer to a long-standing question about the origin of torsional instability in suspension bridges.

Keywords: suspension bridges, torsional stability, Hill equation.

Mathematics Subject Classification: 37C75, 35G31, 34C15.

1 Introduction

The collapse of the Tacoma Narrows Bridge, which occurred in 1940, raised many questions about the stability of suspension bridges. In particular, since the Federal Report [2] considers *the crucial event in the collapse to be the sudden change from a vertical to a torsional mode of oscillation*, see also [36], a natural question appears to be:

why do torsional oscillations appear suddenly in suspension bridges? (Q)

The main purpose of the present paper is to give an answer to (Q) by analyzing a suitable mathematical model. We are here concerned with the main span, namely the part of the roadway between the towers, which has a rectangular shape with two long edges (of the order of 1km) and two shorter edges (of the order of 20m) fixed and hinged between the towers. Due to the large discrepancy between these measures we model the roadway as a degenerate plate, that is, a beam representing the midline of the roadway with cross sections which are free to rotate around the beam. We call this model a *fish-bone*, see Figure 1. The grey part is the roadway, the two black edges are fixed between the towers and the plate is hinged there. The red line contains the barycenters of the cross sections and is the line where the downwards vertical displacement y is computed. The green orthogonal lines are virtual cross sections seen as rods that can rotate around their barycenter, the angle of rotation with respect to the horizontal position being denoted by θ . We assume that the roadway has length L and width 2ℓ with $2\ell \ll L$. The kinetic energy of a rotating object is $\frac{1}{2}J\dot{\theta}^2$, where J is the moment of inertia and $\dot{\theta}$ is the angular velocity. The moment of inertia of a rod of length 2ℓ about the perpendicular axis through its center is given by $\frac{1}{3}M\ell^2$ where M is the mass density of the rod. Hence, the kinetic energy of the rod having half-length ℓ , rotating about its center with angular velocity $\dot{\theta}$, is given by

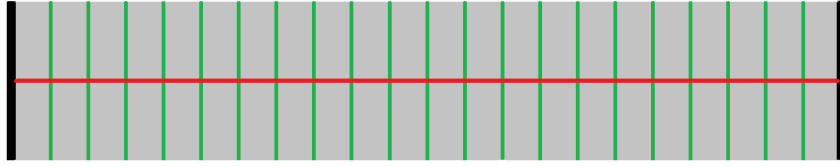


Figure 1: The model of a fish-bone plate.

$\frac{M}{6}\ell^2\dot{\theta}^2$. On the other hand, the bending energy of the beam depends on its curvature and this leads to a fourth order equation, see [6]. Note that M is also the mass per unit length in the longitudinal direction. The hangers are prestressed and the equilibrium position of the midline is $y = 0$, recall that $y > 0$ corresponds to a downwards displacement of the midline. The equations for this system read

$$\begin{cases} My_{tt} + EIy_{xxxx} + f(y + \ell \sin \theta) + f(y - \ell \sin \theta) = 0 & 0 < x < L, \quad t > 0, \\ \frac{M\ell^2}{3}\theta_{tt} - \mu\ell^2\theta_{xx} + \ell \cos \theta (f(y + \ell \sin \theta) - f(y - \ell \sin \theta)) = 0 & 0 < x < L, \quad t > 0, \end{cases} \quad (1)$$

where $\mu > 0$ is a constant depending on the shear modulus and the moment of inertia of the pure torsion, $EI > 0$ is the flexural rigidity of the beam, f represents the restoring action of the prestressed hangers and therefore also includes the action of gravity. We have not yet simplified by ℓ the second equation in (1) in order to emphasize all the terms.

To (1) we associate the following boundary-initial conditions:

$$y(0, t) = y_{xx}(0, t) = y(L, t) = y_{xx}(L, t) = \theta(0, t) = \theta(L, t) = 0 \quad t \geq 0 \quad (2)$$

$$y(x, 0) = \eta_0(x), \quad y_t(x, 0) = \eta_1(x), \quad \theta(x, 0) = \theta_0(x), \quad \theta_t(x, 0) = \theta_1(x) \quad 0 < x < L. \quad (3)$$

The first four boundary conditions in (2) model a beam hinged at its endpoints whereas the last two boundary conditions model the fixed cross sections between towers.

In a slightly different setting, involving mixed space-time fourth order derivatives, a *linear* version of (1) was suggested by Pittel-Yakubovich [32], see also [39, Chapter VI]; this model, with the addition of an external forcing representing the wind, was studied with a parametric resonance approach and an instability was found for a sufficiently large action of the wind. This approach received severe criticisms from engineers [34, p.841], see also [5, 22] for the physical point of view. The reason is that *the rhythm of the failure (torsion) mode has nothing to do with the natural rhythm of shed vortices*. And it is clear that, in a windstorm, a precise phenomenon such as forced resonance is quite unlikely to be seen [24, Section 1]. More recently, Moore [29] considered (1) with

$$f(s) = k \left[\left(s + \frac{Mg}{2k} \right)^+ - \frac{Mg}{2k} \right],$$

a nonlinearity which models hangers behaving as linear springs of elastic constant $k > 0$ if stretched but exert no restoring force if compressed; here g is gravity. This nonlinearity, first suggested by McKenna-Walter [28], describes the possible slackening of the hangers (occurring for $s \leq -\frac{Mg}{2k}$) which was observed during the Tacoma Bridge collapse, see [2, V-12]. But Moore considers the case where the hangers do not slacken: then f becomes *linear*, $f(s) = ks$, and the two equations in (1) decouple. In this situation there is obviously no interaction between vertical and torsional oscillations and, consequently, no possibility to give an answer to **(Q)**.

It is nowadays established that suspension bridges behave nonlinearly, see [8, 15, 23, 28] and references therein. Whence, nonlinear restoring forces f in (1) appear unavoidable if one wishes to

have a realistic model. A nonlinear f was introduced in (1) by Holubová-Matas [19] who were able to prove well-posedness for a forced-damped version of (1).

For a slightly different model, numerical results obtained by McKenna [25] show a sudden development of large torsional oscillations as soon as the hangers lose tension, that is, as soon as the restoring force behaves nonlinearly. Further numerical results by Doole-Hogan [11] and McKenna-Tuama [27] show that a purely vertical periodic forcing may create a torsional response. An answer to **(Q)** was recently given in [3] by using suitable Poincaré maps for a suspension bridge modeled by several coupled (second order) nonlinear oscillators. When enough energy is present within the structure a resonance may occur, leading to an energy transfer between oscillators. The results in [3] are, again, purely numerical. So far no theoretical explanation of the origin of torsional oscillations has been given, nor any effective way to estimate the conditions which may create torsional instability. This naturally leads to the following question (see [26, Problem 7.4]): *can one employ the tools of nonlinear analysis to say anything further in terms of stability?*

In this paper we consider the fish-bone model and we display the same phenomenon of sudden transition from purely vertical to torsional oscillations. Let us mention that a somehow related behavior of self-excited oscillations is visible in nonlinear beam equations, see [4, 17]: in turn, this behavior is also visible in biharmonic semilinear coercive problems, see [10] and [16, Section 3.2]. Here we provide a qualitative theoretical explanation of how internal resonances occur in (1), yielding instability. Our results are purely qualitative and consider the bridge as an *isolated system*, with no dissipation and no interaction with the surrounding fluid. We neglect the so-called aerodynamic forces and we focus our attention on the nonlinear structural behavior. The idea of considering isolated systems is quite natural, see [20, p.176].

In Theorem 1 we prove well-posedness of (1)-(2)-(3) for a wide class of nonlinearities f . The proof is based on a Galerkin method which enables us to project (1) on a finite dimensional subspace of the phase space and to study the instability of the vertical modes in terms of suitable Hill equations [18]. After justifying (both physically and mathematically) this finite dimensional projection we show that it enables us to determine both theoretical and numerical bounds for stability, see Sections 3, 4, 5, and to explain the origin of torsional instability.

The obtained results yield the following answer to question **(Q)**. The onset of large torsional oscillations is due to a structural resonance which generates an energy transfer between different oscillation modes. When the bridge is oscillating vertically with sufficiently large amplitude, part of the energy is suddenly transferred to a torsional mode giving rise to wide torsional oscillations. And estimates of what is meant by “large amplitudes” may be obtained both theoretically and numerically.

2 Simplification of the model and well-posedness

It is not our purpose to give the precise quantitative behavior of the model under consideration. Therefore, in this section we make several simplifications which do not modify the qualitative behavior of the nonlinear system (1).

First of all, up to scaling we may assume that $L = \pi$; this will simplify the Fourier series expansion. Then we take $EI \left(\frac{\pi}{L}\right)^4 = 3\mu \left(\frac{\pi}{L}\right)^2 = 1$ although these parameters may be fairly different in actual bridges. Finally, note that the change of variable $t \mapsto \sqrt{M}t$ results in a positive or negative delay in the occurrence of any (possibly catastrophic) phenomenon; whence, we may take $M = 1$.

After these changes (1) becomes

$$\begin{cases} y_{tt} + y_{xxxx} + f(y + \ell \sin \theta) + f(y - \ell \sin \theta) = 0 & 0 < x < \pi, \quad t > 0, \\ \ell \theta_{tt} - \ell \theta_{xx} + 3 \cos \theta (f(y + \ell \sin \theta) - f(y - \ell \sin \theta)) = 0 & 0 < x < \pi, \quad t > 0, \end{cases} \quad (4)$$

with boundary-initial conditions

$$y(0, t) = y_{xx}(0, t) = y(\pi, t) = y_{xx}(\pi, t) = \theta(0, t) = \theta(\pi, t) = 0 \quad t \geq 0 \quad (5)$$

$$y(x, 0) = \eta_0(x), \quad y_t(x, 0) = \eta_1(x), \quad \theta(x, 0) = \theta_0(x), \quad \theta_t(x, 0) = \theta_1(x) \quad 0 < x < \pi. \quad (6)$$

If f is nondecreasing, as in the physical situation, then

$$F(s) := \int_0^s f(\tau) d\tau \quad \text{is a positive convex function.} \quad (7)$$

Therefore, the coercive functional (here $' = \frac{d}{dx}$)

$$J(y, \theta) = \frac{\|y''\|_2^2}{2} + \ell^2 \frac{\|\theta'\|_2^2}{6} + \int_0^\pi [F(y + \ell \sin \theta) + F(y - \ell \sin \theta)] dx,$$

defined for all $y \in H^2 \cap H_0^1(0, \pi)$ and $\theta \in H_0^1(0, \pi)$, admits a unique absolute minimum which coincides with the equilibrium $(y, \theta) = (0, 0)$; here and in the sequel $\|\cdot\|_2$ denotes the $L^2(0, \pi)$ -norm.

We say that the functions

$$y \in C^0(\mathbb{R}_+; H^2 \cap H_0^1(0, \pi)) \cap C^1(\mathbb{R}_+; L^2(0, \pi)) \cap C^2(\mathbb{R}_+; H^*(0, \pi))$$

$$\theta \in C^0(\mathbb{R}_+; H_0^1(0, \pi)) \cap C^1(\mathbb{R}_+; L^2(0, \pi)) \cap C^2(\mathbb{R}_+; H^{-1}(0, \pi))$$

are solutions of (4)-(5)-(6) if they satisfy the initial conditions (6) and if

$$\langle y_{tt}, \varphi \rangle_{H^*} + \langle y_{xx}, \varphi'' \rangle + \langle f(y - \ell \sin \theta) + f(y + \ell \sin \theta), \varphi \rangle = 0 \quad \forall \varphi \in H^2 \cap H_0^1(0, \pi), \forall t > 0,$$

$$\ell \langle \theta_{tt}, \psi \rangle_{H^{-1}} + \ell \langle \theta_x, \psi' \rangle + 3 \cos \theta \langle f(y + \ell \sin \theta) - f(y - \ell \sin \theta), \psi \rangle = 0 \quad \forall \psi \in H_0^1(0, \pi), \forall t > 0,$$

where $\langle \cdot, \cdot \rangle_{H^{-1}}$ and $\langle \cdot, \cdot \rangle_{H^*}$ are the duality pairings in $H^{-1} = (H_0^1(0, \pi))'$ and $H^* = (H^2 \cap H_0^1(0, \pi))'$ while (\cdot, \cdot) denotes the scalar product in $L^2(0, \pi)$. We have

Theorem 1. *Let $\eta_0 \in H^2 \cap H_0^1(0, \pi)$, $\theta_0 \in H_0^1(0, \pi)$, $\eta_1, \theta_1 \in L^2(0, \pi)$. Assume that $f \in \text{Lip}_{loc}(\mathbb{R})$ is nondecreasing, with $f(0) = 0$, and $|f(s)| \leq C(1 + |s|^p)$ for every $s \in \mathbb{R} \setminus \{0\}$ and for some $p \geq 1$. Then there exists a unique solution (y, θ) of (4)-(5)-(6).*

The proof of Theorem 1 is essentially due to [19, Theorems 8 and 11]. For the sake of completeness and since we require additional regularity for the solution, we quote a sketch of its proof in Section 6. It is based on a Galerkin procedure which suggests to approximate (4) with a finite dimensional system. In the next sections we study in some detail these approximate systems.

3 Finite dimensional torsional stability

3.1 Dropping the trigonometric functions

Since we are willing to describe how small torsional oscillations may suddenly become larger ones, we can use the following approximations:

$$\cos \theta \cong 1 \quad \text{and} \quad \sin \theta \cong \theta. \quad (8)$$

This statement requires a rigorous justification. It is known from the Report [2, p.59] that the torsional angle of the Tacoma Narrows Bridge prior to its collapse grew up until 45° . On the other

hand, Scanlan-Tomko [35, p.1723] judge that the torsional angle can be considered harmless provided that it remains smaller than 3° . In radians this means that

$$\text{the torsional angle may grow up until } \frac{\pi}{4} \text{ and may be considered harmless until } \frac{\pi}{60}. \quad (9)$$

By the Taylor expansion with the Lagrange remainder term, we know that

$$\sin \varepsilon = \sum_{k=0}^n (-1)^k \frac{\varepsilon^{2k+1}}{(2k+1)!} + (-1)^{2n+3} \cos(\varepsilon_\sigma) \frac{\varepsilon^{2n+3}}{(2n+3)!} := P(\varepsilon, n) + \Gamma_s(\varepsilon, n) \quad \forall \varepsilon \in \mathbb{R}$$

where $|\varepsilon_\sigma| < |\varepsilon|$ while P and Γ_s represent, respectively, the approximating polynomial and the approximating error. We have that

$$P\left(\frac{\pi}{60}, 0\right) = \frac{\pi}{60}, \quad P\left(\frac{\pi}{60}, 1\right) = \frac{\pi}{60} - \frac{\pi^3}{1296} \cdot 10^{-3}, \quad P\left(\frac{\pi}{4}, 0\right) = \frac{\pi}{4}, \quad P\left(\frac{\pi}{4}, 1\right) = \frac{\pi}{4} - \frac{\pi^3}{384},$$

while we know that

$$\sin \frac{\pi}{60} = \sin\left(\frac{\pi}{10} - \frac{\pi}{12}\right) = \frac{(\sqrt{5}-1)(\sqrt{6}+\sqrt{2}) - (\sqrt{6}-\sqrt{2})\sqrt{10+2\sqrt{5}}}{16} \approx 0.0523, \quad \sin \frac{\pi}{4} = \frac{1}{\sqrt{2}}.$$

Therefore, the relative error $R_s(\varepsilon, n) := \left| \frac{\sin \varepsilon - P(\varepsilon, n)}{\sin \varepsilon} \right|$ (or percentage error) is given by

$$R_s\left(\frac{\pi}{60}, 0\right) \approx 4.6 \cdot 10^{-4}, \quad R_s\left(\frac{\pi}{60}, 1\right) \approx 6.3 \cdot 10^{-8}, \quad R_s\left(\frac{\pi}{4}, 0\right) \approx 0.11, \quad R_s\left(\frac{\pi}{4}, 1\right) \approx 3.5 \cdot 10^{-3}.$$

Similarly, we proceed with the cosine function. The Taylor expansion yields

$$\cos \varepsilon = \sum_{k=0}^n (-1)^k \frac{\varepsilon^{2k}}{(2k)!} + (-1)^{2n+2} \sin(\varepsilon_\sigma) \frac{\varepsilon^{2n+2}}{(2n+2)!} := Q(\varepsilon, n) + \Gamma_c(\varepsilon, n) \quad \forall \varepsilon \in \mathbb{R}.$$

We have that

$$Q\left(\frac{\pi}{60}, 0\right) = 1, \quad Q\left(\frac{\pi}{60}, 1\right) = 1 - \frac{\pi^2}{7200}, \quad Q\left(\frac{\pi}{4}, 0\right) = 1, \quad Q\left(\frac{\pi}{4}, 1\right) = 1 - \frac{\pi^2}{32},$$

while we also know that

$$\cos \frac{\pi}{60} \approx 0.999, \quad \cos \frac{\pi}{4} = \frac{1}{\sqrt{2}}.$$

Therefore, the relative error $R_c(\varepsilon, n) := \left| \frac{\cos \varepsilon - Q(\varepsilon, n)}{\cos \varepsilon} \right|$ is given by

$$R_c\left(\frac{\pi}{60}, 0\right) \approx 1.4 \cdot 10^{-3}, \quad R_c\left(\frac{\pi}{60}, 1\right) \approx 3.1 \cdot 10^{-7}, \quad R_c\left(\frac{\pi}{4}, 0\right) \approx 0.41, \quad R_c\left(\frac{\pi}{4}, 1\right) \approx 2.2 \cdot 10^{-2}.$$

The above computations enable us to draw the following conclusions, which we collect in a proposition.

Proposition 1.

- If the model allows torsional angles up to $\frac{\pi}{4}$, then the approximation (8) is incorrect, yielding large relative errors (41% for the cosine and 11% for the sine); a second order approximation still yields fairly large relative errors (2.2% for the cosine and 0.4% for the sine).
- If the model allows torsional angles up to $\frac{\pi}{60}$, the approximation (8) is quite accurate, yielding small relative errors (0.14% for the cosine and less than 0.05% for the sine); a second order approximation does not improve significantly the precision of the model.

Since we consider small torsional data, of the order of 10^{-4} , and since our purpose is merely to detect when the torsional angle θ increases of two orders of magnitude, thereby reaching at most $10^{-2} \ll \frac{\pi}{60}$, we can make use of the approximation (8). We emphasize that our results do not aim to describe the behavior of the bridge when the torsional angle becomes large, they just aim to describe how a small torsional angle ceases to be small.

Proposition 1 allows us to implement the approximation suggested by (8); we set $z := \ell\theta$ so that (4) becomes

$$\begin{cases} y_{tt} + y_{xxxx} + f(y+z) + f(y-z) = 0 & 0 < x < \pi, t > 0, \\ z_{tt} - z_{xx} + 3f(y+z) - 3f(y-z) = 0 & 0 < x < \pi, t > 0. \end{cases} \quad (10)$$

In (10) the dependence on the width ℓ is somehow hidden; to recover this dependence, note that $\theta = \frac{z}{\ell}$ so that smaller ℓ yield larger θ , that is, less stability.

3.2 Choosing the nonlinearity

We consider a specific nonlinearity f satisfying the assumptions of Theorem 1. Since our purpose is merely to describe the qualitative phenomenon, the choice of the nonlinearity is not of fundamental importance; it is shown in [3] that several different nonlinearities yield the same qualitative behavior for the solutions. Following a suggestion by Plaut-Davis [33, Section 3.5] and since the same nonlinearity appears in several elastic contexts (see e.g. [21, (1)]) we take

$$f(s) = s + \gamma s^3 \quad \text{for } \gamma > 0. \quad (11)$$

The parameter γ measures how far is f from a linear function. When f is as in (11), the system (10) becomes

$$\begin{cases} y_{tt} + y_{xxxx} + 2y(1 + \gamma y^2 + 3\gamma z^2) = 0 & 0 < x < \pi, t > 0, \\ z_{tt} - z_{xx} + 6z(1 + 3\gamma y^2 + \gamma z^2) = 0 & 0 < x < \pi, t > 0. \end{cases} \quad (12)$$

To (12) we associate some initial conditions which determine the conserved energy of the system, that is,

$$\begin{aligned} E_\gamma &= \frac{\|y_t(t)\|_2^2}{2} + \frac{\|z_t(t)\|_2^2}{6} + \frac{\|y_{xx}(t)\|_2^2}{2} + \frac{\|z_x(t)\|_2^2}{6} \\ &+ \int_0^\pi \left(y(x,t)^2 + z(x,t)^2 + 3\gamma z(x,t)^2 y(x,t)^2 + \gamma \frac{y(x,t)^4}{2} + \gamma \frac{z(x,t)^4}{2} \right) dx. \end{aligned}$$

Let (y_γ, z_γ) be the solution of (12) with some initial conditions. If we put $(\bar{y}, \bar{z}) = \sqrt{\gamma}(y_\gamma, z_\gamma)$, then (\bar{y}, \bar{z}) solves system (12) when $\gamma = 1$. Accordingly, the conserved energy is modified:

Proposition 2. *Let $\gamma > 0$. The conserved energy of (12) satisfies $E_\gamma = E_1/\gamma$, where E_1 is the conserved energy of (12) when $\gamma = 1$. Moreover, the widest vertical amplitude $\|y_\gamma\|_\infty$ satisfies $\|y_\gamma\|_\infty = \|\bar{y}\|_\infty/\sqrt{\gamma}$.*

The proof of Proposition 2 follows by rescaling. Proposition 2 enables us to restrict our attention to the case $\gamma = 1$, that is,

$$f(s) = s + s^3. \quad (13)$$

In this case we have

$$f(y+z) + f(y-z) = 2y(1 + y^2 + 3z^2) \quad \text{and} \quad f(y+z) - f(y-z) = 2z(1 + 3y^2 + z^2)$$

so that (4) reduces to

$$\begin{cases} y_{tt} + y_{xxxx} + 2y(1 + y^2 + 3z^2) = 0 & (0 < x < \pi, t \geq 0) \\ z_{tt} - z_{xx} + 6z(1 + 3y^2 + z^2) = 0 & (0 < x < \pi, t \geq 0). \end{cases} \quad (14)$$

Moreover, the conserved energy is given by

$$\begin{aligned} E &= \frac{\|y_t(t)\|_2^2}{2} + \frac{\|z_t(t)\|_2^2}{6} + \frac{\|y_{xx}(t)\|_2^2}{2} + \frac{\|z_x(t)\|_2^2}{6} \\ &+ \int_0^\pi \left[\frac{y(x,t)^4}{2} + \frac{z(x,t)^4}{2} + 3z(x,t)^2 y(x,t)^2 + y(x,t)^2 + z(x,t)^2 \right] dx. \end{aligned} \quad (15)$$

Our purpose is to determine energy thresholds for torsional stability of vertical modes (still to be rigorously defined), see Section 3.4. From Proposition 2 we see that

$$\gamma \mapsto E_\gamma \quad \text{and} \quad \gamma \mapsto \|y_\gamma\|_\infty$$

are decreasing with respect to γ and both tend to 0 if $\gamma \rightarrow \infty$, whereas they tend to ∞ if $\gamma \rightarrow 0$. This shows that the nonlinearity plays against stability:

more nonlinearity yields more instability and almost linear elastic behaviors are extremely stable.

3.3 Why can we neglect high torsional modes?

Our finite dimensional analysis is performed on the low modes. This procedure is motivated by classical engineering literature. Bleich-McCullough-Rosecrans-Vincent [7, p.23] write that *out of the infinite number of possible modes of motion in which a suspension bridge might vibrate, we are interested only in a few, to wit: the ones having the smaller numbers of loops or half waves.* The physical reason why only low modes should be considered is that higher modes require large bending energy; this is well explained by Smith-Vincent [37, p.11] who write that *the higher modes with their shorter waves involve sharper curvature in the truss and, therefore, greater bending moment at a given amplitude and accordingly reflect the influence of the truss stiffness to a greater degree than do the lower modes.* The suggestion to restrict attention to lower modes, mathematically corresponds to project an infinite dimensional phase space on a finite dimensional subspace, a technique which should be attributed to Galerkin [14].

Consider the solution (y, z) of (14)-(5)-(6), as given by a straightforward variant of Theorem 1, and let us expand it in Fourier series with respect to x :

$$y(x, t) = \sum_{j=1}^{\infty} y_j(t) \sin(jx), \quad z(x, t) = \sum_{j=1}^{\infty} z_j(t) \sin(jx), \quad (16)$$

where the functions y_j and z_j are the unknowns. Denote by z^m the projection of z on the space spanned by $\{\sin(x), \dots, \sin(mx)\}$ and by w^m the projection of z on the infinite dimensional space spanned by $\{\sin((m+1)x), \sin((m+2)x) \dots\}$:

$$z(x, t) = z^m(x, t) + w^m(x, t), \quad z^m(x, t) = \sum_{j=1}^m z_j(t) \sin(jx), \quad w^m(x, t) = \sum_{j=m+1}^{\infty} z_j(t) \sin(jx). \quad (17)$$

In Section 7 we prove the following sufficient smallness condition for w^m .

Theorem 2. Let $\omega > 0$, let (y, z) be a solution of (14)-(5)-(6) having energy $E > 0$ and let (17) be the decomposition of z . Then $\|w^m\|_\infty < \omega$ provided that at least one of the following inequalities holds

$$\pi \omega^4 (m+1)^2 \left[\pi(m^2 + 2m + 7)^2 + 36E \right] - 36 \pi^2 E^2 (m+1)^4 - 9\omega^8 \geq 0 \quad (18)$$

$$E^3 + \frac{\pi}{2} E^2 - \frac{3\omega^4}{4} E - \frac{3\omega^8}{32\pi} - \frac{\pi\omega^4}{3} \leq 0. \quad (19)$$

The two inequalities (18) and (19) have a completely different meaning. The condition (19) is somehow obvious and uninteresting: it states that if the total energy E is sufficiently small then all the torsional components are small. In the next table we give some numerical bounds for E in dependence of the maximum allowed amplitude ω .

ω	0.2	0.1	0.05	0.01
E	$3.3 \cdot 10^{-2}$	$8.2 \cdot 10^{-3}$	$2 \cdot 10^{-3}$	$8.2 \cdot 10^{-5}$

Upper bound for the energy E in dependence of the maximal amplitude ω .

It appears clearly that the energy E needs to be very small.

On the contrary, the condition (18) is much more useful: it gives an upper bound on the modes to be checked. High torsional modes remain small provided they are above a threshold which depends on the energy E and on the maximum allowed amplitude ω . In the next two tables we give some numerical bounds on the modes m in dependence of the energy E , when ω is fixed.

E	1	0.5	0.4	0.3	0.2	0.1	0.05
m	598	298	238	178	118	58	28

Upper bound for the number of modes m in dependence of the energy E when $\omega = 0.1$.

E	1	0.5	0.4	0.3	0.2	0.1	0.05
m	148	73	58	43	28	13	5

Upper bound for the number of modes m in dependence of the energy E when $\omega = 0.2$.

It turns out that the map $E \mapsto m$ appears to be almost linear: in fact, we have

$$m \approx \frac{6E}{\omega^2} - 2.$$

This approximation is reliable for small ω : it follows by dropping the term $9\omega^8$ in (18), by dividing by $(m+1)^2$, and by solving the remaining second order algebraic inequality with respect to m .

Remark 1. With the very same procedure we may rule out high vertical modes where, possibly, (19) becomes more useful. We have here focused our attention only on the torsional modes because they are considered the main cause in the collapses of bridges, see [2, 36].

3.4 Stability of the low modes

Let us fix some energy $E > 0$. After having ruled out high modes (say, larger than m) through Theorem 2, we focus our attention on the lowest m modes, $j \leq m$. We consider the functions

$$y^m(x, t) = \sum_{j=1}^m y_j(t) \sin(jx), \quad z^m(x, t) = \sum_{j=1}^m z_j(t) \sin(jx) \quad (20)$$

aiming to approximate the solution of (14), see the proof of Theorem 1 in Section 6. Put $(Y, Z) := (y_1, \dots, y_m, z_1, \dots, z_m) \in \mathbb{R}^{2m}$ and consider the system

$$\begin{cases} \ddot{y}_j(t) + j^4 y_j(t) + \frac{4}{\pi} \int_0^\pi y^m(x, t)(1 + y^m(x, t)^2 + 3z^m(x, t)^2) \sin(jx) dx = 0 \\ \ddot{z}_j(t) + j^2 z_j(t) + \frac{12}{\pi} \int_0^\pi z^m(x, t)(1 + 3y^m(x, t)^2 + z^m(x, t)^2) \sin(jx) dx = 0 \end{cases} \quad (j = 1, \dots, m). \quad (21)$$

The proof of Theorem 1 is constructive: it ensures that y^m and z^m converge (as $m \rightarrow \infty$) to the unique solution of (14). To (21) we associate the initial conditions

$$Y(0) = Y_0, \quad \dot{Y}(0) = Y_1, \quad Z(0) = Z_0, \quad \dot{Z}(0) = Z_1, \quad (22)$$

where the components of the vector $Y_0 \in \mathbb{R}^m$ are the Fourier coefficients of the projection of $y(0)$ onto the finite dimensional space spanned by $\{\sin(jx)\}_{j=1}^m$; similarly for Y_1, Z_0, Z_1 . In the sequel, we denote by

$$\{e_j\}_{j=1}^m \quad \text{the canonical basis of } \mathbb{R}^m.$$

The conserved total energy of (21), to be compared with (15), is given by

$$\begin{aligned} E &:= \frac{|\dot{Y}|^2}{2} + \frac{|\dot{Z}|^2}{6} + \frac{1}{2} \sum_{j=1}^m j^4 y_j^2 + \frac{1}{6} \sum_{j=1}^m j^2 z_j^2 \\ &+ \frac{2}{\pi} \int_0^\pi \left[\frac{y^m(x, t)^4}{2} + \frac{z^m(x, t)^4}{2} + 3y^m(x, t)^2 z^m(x, t)^2 + y^m(x, t)^2 + z^m(x, t)^2 \right] dx. \end{aligned} \quad (23)$$

Note that (23) yields the boundedness of each of the $y_j, \dot{y}_j, z_j, \dot{z}_j$. Once (21) is solved, the functions y^m and z^m in (20) provide finite dimensional approximations of the solutions (16) of (14). In view of Theorem 2, this approximation is reliable since higher modes have small components.

Let us describe rigorously what we mean by vertical mode of (21).

Definition 1. Let $m \geq 1$ and $1 \leq k \leq m$; let $\mathbb{R}^2 \ni (\alpha, \beta) \neq (0, 0)$. We say that Y_k is the k -th **vertical mode** at energy $E_k(\alpha, \beta)$ if $(Y_k, 0) \in \mathbb{R}^{2m}$ is the solution of (21) with initial conditions (22) satisfying

$$Y(0) = \alpha e_k, \quad \dot{Y}(0) = \beta e_k, \quad Z(0) = \dot{Z}(0) = 0 \in \mathbb{R}^m. \quad (24)$$

By (23) and Lemma 4 the conserved energy of (21)-(24) is given by

$$E_k(\alpha, \beta) := \frac{\beta^2}{2} + (k^4 + 2) \frac{\alpha^2}{2} + \frac{3}{8} \alpha^4. \quad (25)$$

The initial conditions in (24) determine the constant value of the energy $E_k(\alpha, \beta)$. Different couples of data (α, β) in (24) may yield the same energy; in particular, for all $(\alpha, \beta) \in \mathbb{R}^2$ there exists a unique $\mu > 0$ such that

$$E_k(\mu, 0) = E_k(\alpha, \beta). \quad (26)$$

This value of μ is the amplitude of the initial oscillation of the k -th vertical mode.

The standard procedure to deduce the stability of $(Y_k, 0)$ consists in studying the behavior of the perturbed vector $(Y - Y_k, Z)$ where (Y, Z) solves (21), see [38, Chapter 5]. This leads to linearize the system (21) around $(Y_k, 0)$ and, subsequently, to apply the Floquet theory for differential equations with periodic coefficients, at least for $m = 1, 2$. The torsional components ξ_j of the linearization of system (21) around $(Y_k, 0)$ satisfy

$$\frac{d^2 \Xi}{dt^2} + P_k(t) \Xi = 0, \quad (27)$$

where $\Xi = (\xi_1, \dots, \xi_m)$ and $P_k(t)$ is a $m \times m$ matrix depending on Y_k .

Definition 2. *We say that the k -th vertical mode Y_k at energy $E_k(\alpha, \beta)$ (that is, the solution of (21)-(24)) is **torsionally stable** if the trivial solution of (27) is stable.*

In the following two sections we state our (theoretical and numerical) stability results when $m = 1$ and $m = 2$. As we briefly explain in the Appendix, the cases where $m \geq 3$ are more involved because Y may spread on more components. Our results lead to the conclusion that

if the energy $E_k(\alpha, \beta)$ in (25) is small enough then small initial torsional oscillations remain small for all time $t > 0$, whereas if $E_k(\alpha, \beta)$ is large (that is, the vertical oscillations are initially large) then small torsional oscillations suddenly become wider.

Therefore, a crucial role is played by the amount of energy inside the system (14). In the next sections we analyze the energy, both theoretically and numerically, within (21) when $m = 1$ and $m = 2$. For the theoretical estimates of the critical energy we will make use of some stability criteria by Zhukovskii [40] applied to suitable Hill equations [18]. For the numerical estimates, we choose “small” data Z_0 and Z_1 in (22) and, to evaluate the stability of the k -th vertical mode of (21), we consider data Y_0 and Y_1 concentrated on the k -th component of the canonical basis of \mathbb{R}^m . More precisely, we take

$$Y_0 = \mu e_k, \quad Y_1 = 0 \in \mathbb{R}^m, \quad |Z_0| \leq |\mu| \cdot 10^{-4}, \quad |Z_1| \leq |\mu| \cdot 10^{-4}. \quad (28)$$

Then the initial (and constant) energy (23) is approximately given by $E \approx (k^4 + 2) \frac{\mu^2}{2} + \frac{3}{8} \mu^4$ and the remaining (small) part of the initial energy is the torsional energy of Z_0 and Z_1 plus some coupling energy. We also show that different initial data, with $Y_1 \neq 0$, give the same behavior provided the initial energy is the same.

4 The 1-mode system

When $m = 1$, the approximated 1-mode solutions (20) have the form

$$y^1(x, t) = y_1(t) \sin x, \quad z^1(x, t) = z_1(t) \sin x.$$

By Lemma 4 in the Appendix, (21) reads

$$\begin{cases} \ddot{y}_1 + 3y_1 + \frac{3}{2}y_1^3 + \frac{9}{2}y_1z_1^2 = 0 \\ \ddot{z}_1 + 7z_1 + \frac{9}{2}z_1^3 + \frac{27}{2}z_1y_1^2 = 0, \end{cases} \quad (29)$$

with some initial conditions

$$y_1(0) = \eta_0, \quad \dot{y}_1(0) = \eta_1, \quad z_1(0) = \zeta_0, \quad \dot{z}_1(0) = \zeta_1. \quad (30)$$

Hence, in this case $Y_1 = \bar{y}$ where \bar{y} is the unique (periodic) solution of the autonomous equation

$$\ddot{y} + 3y + \frac{3}{2}y^3 = 0, \quad y(0) = \alpha, \quad \dot{y}(0) = \beta, \quad (31)$$

which admits the conserved quantity

$$E = \frac{\dot{y}^2}{2} + \frac{3}{2}y^2 + \frac{3}{8}y^4 \equiv \frac{\beta^2}{2} + \frac{3}{2}\alpha^2 + \frac{3}{8}\alpha^4. \quad (32)$$

Therefore, (27) reduces to the following Hill equation [18]:

$$\ddot{\xi} + a(t)\xi = 0 \quad \text{with} \quad a(t) = 7 + \frac{27}{2}\bar{y}(t)^2, \quad (33)$$

In Section 8 we prove

Theorem 3. *The first vertical mode $Y_1 = \bar{y}$ at energy $E_1(\alpha, \beta)$ (that is, the solution of (31)) is torsionally stable provided that*

$$\|\bar{y}\|_\infty \leq \sqrt{\frac{10}{21}} \approx 0.69$$

or, equivalently, provided that

$$E_1 \leq \frac{235}{294} \approx 0.799.$$

As already remarked, Definition 2 is the usual one. Nevertheless, the stability results obtained in [31] for suitable *nonlinear* Hill equations suggest that different equivalent definitions can be stated, possibly not involving a linearization process. In particular, by [31] we know that the stability of the trivial solution of (33) implies the stability of the trivial solution of

$$\ddot{\xi} + a(t)\xi + \frac{9}{2}\xi^3 = 0 \quad \text{with} \quad a(t) = 7 + \frac{27}{2}\bar{y}(t)^2.$$

We also refer to [9] and references therein for stability results for nonlinear first order planar systems. As far as we are aware, there is no general theory for nonlinear systems of any number of equations but it is reasonable to expect that results similar to [31] might hold. This is why, in our numerical experiments, we consider system (29) without any linearization. The below numerical results suggest that the threshold of instability is larger than the one in Theorem 3. Clearly, they only give a “local stability” information (for finite time), but the observed phenomenon is very precise and the thresholds of torsional instability are determined with high accuracy. The pictures in Figure 2 display the plots of the solutions of (29) with initial data

$$y_1(0) = \|y_1\|_\infty = 10^4 z_1(0), \quad \dot{y}_1(0) = \dot{z}_1(0) = 0 \quad (34)$$

for different values of $\|y_1\|_\infty$. The green plot is y_1 and the black plot is z_1 . For $\|y_1\|_\infty = 1.45$ no

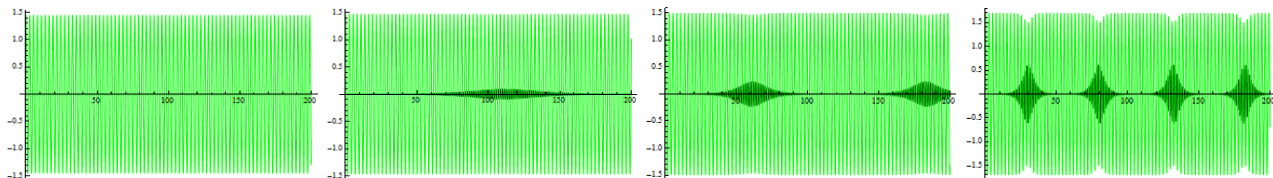


Figure 2: On the interval $t \in [0, 200]$, plot of the solutions y_1 (green) and z_1 (black) of (29)-(34) for $\|y_1\|_\infty = 1.45, 1.47, 1.5, 1.7$ (from left to right).

wide torsion appears, which means that the solution $(y_1, 0)$ is torsionally stable. For $\|y_1\|_\infty = 1.47$ we see a sudden increase of the torsional oscillation around $t \approx 50$. Therefore, the stability threshold for the vertical amplitude of oscillation lies in the interval $[1.45, 1.47]$. Finer experiments show that

the threshold is $\|y_1\|_\infty \approx 1.46$, corresponding to a critical energy of about $E \approx 4.9$: these values should be compared with the statement of Theorem 3. When the amplitude is increased further, for $\|y_1\|_\infty = 1.5$ and $\|y_1\|_\infty = 1.7$, the appearance of wide torsional oscillations is anticipated (earlier in time) and amplified (larger in magnitude). This phenomenon continues to increase for increasing $\|y_1\|_\infty$. We then tried different initial data with $\dot{y}_1(0) \neq 0$; as expected, the sudden appearance of torsional oscillations always occurs at the energy level $E \approx 4.9$, no matter of how it is initially distributed between kinetic and potential energy of y_1 . Summarizing, we have seen that the “true” (numerical) thresholds are larger than the ones obtained in Theorem 3.

For suspension bridges in absence of wind, it is well-known that the torsional frequency is always greater than its vertical counterpart, see [20, p.178]. We wish to emphasize this fact in our fish-bone model. We slightly modify the parameters involved: instead of $EI = 3\mu = 1$, we take $EI = \mu = 1$ and (29) should then be replaced by

$$\begin{cases} \ddot{y}_1 + 3y_1 + \frac{3}{2}y_1^3 + \frac{9}{2}y_1z_1^2 = 0 \\ \ddot{z}_1 + 9z_1 + \frac{9}{2}z_1^3 + \frac{27}{2}z_1y_1^2 = 0. \end{cases} \quad (35)$$

Then we prove

Theorem 4. *Let (y_1, z_1) be a nontrivial solution of (35). Let $t_1 < t_2$ be two consecutive critical points of $y_1(t)$. Then there exists $\tau \in (t_1, t_2)$ such that $z_1(\tau) = 0$.*

Proof. For any solution (y_1, z_1) of (35) we have

$$\frac{d}{dt} [\dot{y}_1^3 \dot{z}_1] + 9 \frac{d}{dt} \left[y_1 z_1 + \frac{y_1 z_1^3}{2} + \frac{z_1 y_1^3}{2} \right] \dot{y}_1^2 = 0. \quad (36)$$

By integrating (36) by parts over (t_1, t_2) we obtain

$$\begin{aligned} 0 &= 9 \int_{t_1}^{t_2} \frac{d}{dt} \left[y_1(t) z_1(t) + \frac{y_1(t) z_1(t)^3}{2} + \frac{z_1(t) y_1(t)^3}{2} \right] \dot{y}_1(t)^2 dt \\ &= -18 \int_{t_1}^{t_2} y_1(t) z_1(t) \left[1 + \frac{z_1(t)^2}{2} + \frac{y_1(t)^2}{2} \right] \ddot{y}_1(t) \dot{y}_1(t) dt \\ &= 54 \int_{t_1}^{t_2} y_1(t)^2 z_1(t) \left[1 + \frac{z_1(t)^2}{2} + \frac{y_1(t)^2}{2} \right] \left[1 + \frac{y_1(t)^2}{2} + \frac{3z_1(t)^2}{2} \right] \dot{y}_1(t) dt \end{aligned}$$

where, in the last step, we used (35)₁. In the integrand, $y_1^2 [1 + \frac{z_1^2}{2} + \frac{y_1^2}{2}] [1 + \frac{y_1^2}{2} + \frac{3z_1^2}{2}] \geq 0$ and also \dot{y}_1 has fixed sign so that the integral may vanish only if $z_1(t)$ changes sign in (t_1, t_2) . \square

Theorem 4 shows that the nonlinear frequency of z_1 is always larger than the frequency of y_1 . If the frequency of z_1 reaches a multiple of the frequency of y_1 then an internal resonance is created and this yields a possible transfer of energy from y_1 to z_1 .

5 The 2-modes system

Let us fix $m = 2$ in (20) and (21) and put

$$y^2(x, t) = y_1(t) \sin x + y_2(t) \sin(2x), \quad z^2(x, t) = z_1(t) \sin x + z_2(t) \sin(2x).$$

Then, after integration over $(0, \pi)$ and using Lemma 4, we see that y_j and z_j satisfy the system

$$\begin{cases} \ddot{y}_1 + 3y_1 + \frac{9}{2}y_1z_1^2 + 3y_1z_2^2 + 3y_1y_2^2 + \frac{3}{2}y_1^3 + 6z_1z_2y_2 = 0 \\ \ddot{y}_2 + 18y_2 + \frac{9}{2}y_2z_2^2 + 3y_2z_1^2 + 3y_2y_1^2 + \frac{3}{2}y_2^3 + 6z_1z_2y_1 = 0 \\ \ddot{z}_1 + 7z_1 + \frac{27}{2}z_1y_1^2 + 9z_1y_2^2 + 9z_1z_2^2 + \frac{9}{2}z_1^3 + 18y_1y_2z_2 = 0 \\ \ddot{z}_2 + 10z_2 + \frac{27}{2}z_2y_2^2 + 9z_2y_1^2 + 9z_2z_1^2 + \frac{9}{2}z_2^3 + 18y_1y_2z_1 = 0, \end{cases} \quad (37)$$

while the energy becomes

$$\begin{aligned} E = & \frac{1}{2}(\dot{y}_1^2 + \dot{y}_2^2) + \frac{1}{6}(\dot{z}_1^2 + \dot{z}_2^2) + \frac{3}{2}y_1^2 + 9y_2^2 + \frac{7}{6}z_1^2 + \frac{5}{3}z_2^2 + 6y_1y_2z_1z_2 \\ & + \frac{9}{4}(y_1^2z_1^2 + y_2^2z_2^2) + \frac{3}{2}(y_1^2y_2^2 + y_1^2z_2^2 + y_2^2z_1^2 + z_1^2z_2^2) + \frac{3}{8}(y_1^4 + y_2^4 + z_1^4 + z_2^4). \end{aligned}$$

Since our purpose is to emphasize perturbations of linear equations, it is more convenient to rewrite the two last equations in (37) as

$$\begin{cases} \ddot{z}_1 + \left(7 + \frac{27}{2}y_1^2 + 9y_2^2 + 9z_2^2\right)z_1 + \frac{9}{2}z_1^3 = -18y_1y_2z_2 \\ \ddot{z}_2 + \left(10 + \frac{27}{2}y_2^2 + 9y_1^2 + 9z_1^2\right)z_2 + \frac{9}{2}z_2^3 = -18y_1y_2z_1. \end{cases} \quad (38)$$

Hence, in this case we have $Y_j = \bar{y}_j e_j$ ($j = 1, 2$) where \bar{y}_j is the unique (periodic) solution of the problem

$$\ddot{y}_j(t) + (j^4 + 2)y_j(t) + \frac{3}{2}y_j(t)^3 = 0, \quad y_j(0) = \alpha, \quad \dot{y}_j(0) = \beta,$$

which admits the conserved energy

$$E_j = \frac{\dot{y}(t)^2}{2} + (j^4 + 2)\frac{y(t)^2}{2} + \frac{3y(t)^4}{8} = \frac{\beta^2}{2} + (j^4 + 2)\frac{\alpha^2}{2} + \frac{3}{8}\alpha^4 \geq 0. \quad (39)$$

Then (27) becomes the following system of uncoupled Hill equations:

$$\begin{cases} \ddot{\xi}_1(t) + a_{1,j}(t)\xi_1(t) = 0 \\ \ddot{\xi}_2(t) + a_{2,j}(t)\xi_2(t) = 0 \end{cases} \quad (j = 1, 2) \quad (40)$$

where $a_{i,j}(t) = i^2 + 6 + 9\alpha_{i,j}\bar{y}_j(t)^2$, $\alpha_{i,j} = 1$ if $i \neq j$ and $\alpha_{i,i} = \frac{3}{2}$.

In Section 9 we prove

Theorem 5. *The first vertical mode $Y_1 = (\bar{y}_1, 0)$ of (37) at energy E_1 is torsionally stable provided that*

$$\|\bar{y}_1\|_\infty \leq \frac{1}{\sqrt{3}} \approx 0.577 \iff E_1 \leq \frac{13}{24} \approx 0.542. \quad (41)$$

The second vertical mode $Y_2 = (0, \bar{y}_2)$ of (37) at energy E_2 is torsionally stable provided that

$$\|\bar{y}_2\|_\infty \leq \sqrt{\frac{32}{51}} \approx 0.792 \iff E_2 \leq \frac{5024}{867} \approx 5.795.$$

Again, Theorem 5 merely gives a sufficient condition for the torsional stability and, numerically, the thresholds seem to be larger. Once more, numerics only shows local stability but the observed phenomena are very precise and hence they appear reliable. Here the situation is slightly more complicated because two modes (4 equations) are involved. Therefore, we proceed differently.

We start by studying the stability of the first vertical mode. The pictures in Figure 3 display the plots of the torsional components (z_1, z_2) of the solutions of (37) with initial data

$$y_1(0) = \|y_1\|_\infty = 10^4 y_2(0) = 10^4 z_1(0) = 10^4 z_2(0), \quad \dot{y}_1(0) = \dot{y}_2(0) = \dot{z}_1(0) = \dot{z}_2(0) = 0 \quad (42)$$

for different values of $\|y_1\|_\infty$. The green plot is z_1 and the black plot is z_2 . Recalling that the initial

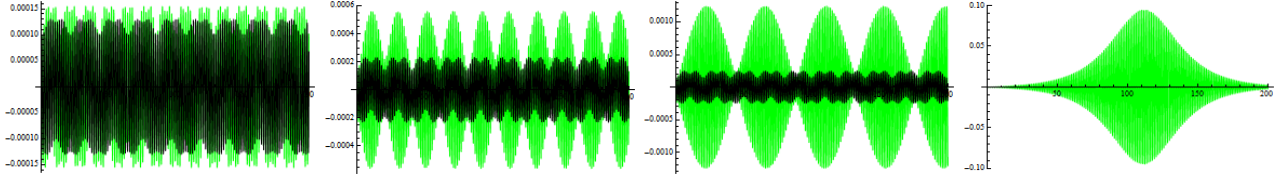


Figure 3: On the interval $t \in [0, 200]$, plot of the torsional components z_1 (green) and z_2 (black) of (37)-(42) for $\|y_1\|_\infty = 1, 1.4, 1.45, 1.47$ (from left to right).

torsional amplitudes are of the order of 10^{-4} we can see that, for $\|y_1\|_\infty = 1$, both torsional components remain small, although z_1 is slightly larger than z_2 . By increasing the y_1 amplitude, $\|y_1\|_\infty = 1.4$ and $\|y_1\|_\infty = 1.45$, we see that z_1 and z_2 still remain small but now z_1 is significantly larger than z_2 and displays bumps. When $\|y_1\|_\infty = 1.47$, z_1 has become so large that z_2 , which is still of the order of 10^{-4} , is no longer visible in the fourth plot of Figure 3. The threshold for the appearance of $z_1 \gg z_2$ is again $\|y_1\|_\infty \approx 1.46$, see Section 4. Therefore, it seems that the stability of the first vertical mode does not transfer energy on the second modes; but, as we now show, this is not true.

We increased further the initial datum up to $\|y_1\|_\infty = 3$. In Figure 4 we display the plot of all the components (y_1, y_2, z_1, z_2) of the corresponding solution of (37)-(42). One can see that some energy is

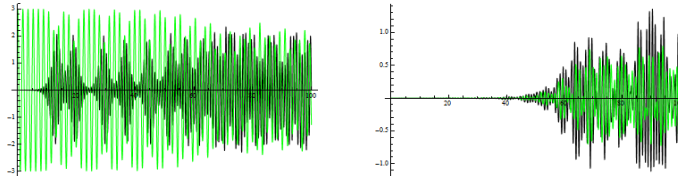


Figure 4: On the interval $t \in [0, 100]$, plot of the solution of (37)-(42) for $\|y_1\|_\infty = 3$. Left picture: green= y_1 , black= z_1 . Right picture: green= y_2 , black= z_2 .

also transferred to both the vertical and torsional second modes, although this occurs with some delay (in the second picture, the green oscillation is hidden but it is almost as wide as the black oscillation).

Concerning the stability of the second vertical mode, we just quickly describe our numerical results. The loss of stability appeared for $\|y_2\|_\infty \approx 0.945$ corresponding to $E \approx 8.33$; in this case, Theorem 5 gives a fairly good sufficient condition. For $\|y_2\|_\infty \leq 0.94$, both z_1 and z_2 (and also y_1) remain small and of the same magnitude, with the amplitude of oscillations of z_1 being almost constant while the amplitude of oscillations of z_2 being variable. For $\|y_2\|_\infty \geq 0.945$, z_2 suddenly displays the bumps seen in the above pictures. Finally, for $\|y_2\|_\infty \geq 1.08$, also y_1 and z_1 display sudden wide oscillations which, however, appear delayed in time when compared with z_2 .

6 Proof of Theorem 1

The existence and uniqueness issues are inspired to [19, Theorems 8 and 11] while the regularity statement is achieved by arguing as in [12, Lemma 8.1].

For the existence part we perform a Galerkin procedure. The sequence $\{\sin(jx)\}_{j \geq 1}$ is an orthogonal basis of the spaces $L^2(0, \pi)$, $H_0^1(0, \pi)$ and $H^2 \cap H_0^1(0, \pi)$. Then, for a given $n \in \mathbb{N}$, we set

$$y^n(x, t) = \sum_{j=1}^n y_j(t) \sin(jx), \quad \theta^n(x, t) = \sum_{j=1}^n \theta_j(t) \sin(jx), \quad (43)$$

where y_j and θ_j satisfy the system of ODE's

$$\begin{cases} \ddot{y}_j(t) + j^4 y_j(t) + \frac{2}{\pi} \int_0^\pi [f(y^n(x, t) + \ell \sin \theta^n(x, t)) + f(y^n(x, t) - \ell \sin \theta^n(x, t))] \sin(jx) dx = 0 \\ \ell \ddot{\theta}_j(t) + j^2 \ell \theta_j(t) + \frac{6}{\pi} \int_0^\pi [f(y^n(x, t) + \ell \sin \theta^n(x, t)) - f(y^n(x, t) - \ell \sin \theta^n(x, t))] \sin(jx) dx = 0 \end{cases} \quad (44)$$

for $t > 0$ and $j = 1, \dots, n$. Moreover, writing the Fourier expansion of the initial data (6) as

$$\eta_0(x) = \sum_{j=1}^{\infty} \eta_0^j \sin(jx) \quad \text{in } H^2 \cap H_0^1(0, \pi) \quad y_1(x) = \sum_{j=1}^{\infty} \eta_1^j \sin(jx) \quad \text{in } L^2(0, \pi)$$

$$\theta_0(x) = \sum_{j=1}^{\infty} \theta_0^j \sin(jx) \quad \text{in } H_0^1(0, \pi) \quad \theta_1(x) = \sum_{j=1}^{\infty} \theta_1^j \sin(jx) \quad \text{in } L^2(0, \pi),$$

we assume that, for every $1 \leq j \leq n$, the y_j 's and the θ_j 's satisfy

$$y_j(0) = \eta_0^j, \quad \dot{y}_j(0) = \eta_1^j, \quad \theta_j(0) = \theta_0^j, \quad \dot{\theta}_j(0) = \theta_1^j. \quad (45)$$

The existence of a unique local solution of (44)-(45) in some maximal interval of continuation $[0, \tau_n)$, $\tau_n > 0$, follows from standard theory of ODE's. Then, we multiply the first equation in (44) by $6\dot{y}_j(t)$ and the second equation by $2\dot{\theta}_j(t)$, then we add the so obtained $2n$ equations for $j = 1$ to n , finally we integrate over $(0, t)$ to obtain

$$3\|\dot{y}^n(t)\|_2^2 + 3\|y_{xx}^n(t)\|_2^2 + \ell^2\|\dot{\theta}^n(t)\|_2^2 + \ell^2\|\theta_x^n(t)\|_2^2 + 12 \int_0^\pi [F(y^n(t) + \ell \sin \theta^n(t)) + F(y^n(t) - \ell \sin \theta^n(t))] dx \leq$$

$$3\|\dot{y}^n(0)\|_2^2 + 3\|y_{xx}^n(0)\|_2^2 + \ell^2\|\dot{\theta}^n(0)\|_2^2 + \ell^2\|\theta_x^n(0)\|_2^2 + 12 \int_0^\pi [F(y^n(0) + \ell \sin \theta^n(0)) + F(y^n(0) - \ell \sin \theta^n(0))] dx$$

where $y^n(t) = y^n(x, t)$, $\theta^n(t) = \theta^n(x, t)$ and $F(s) = \int_0^s f(\tau) d\tau$. Since $F \geq 0$, this yields

$$3\|\dot{y}^n(t)\|_2^2 + 3\|y_{xx}^n(t)\|_2^2 + \ell^2\|\dot{\theta}^n(t)\|_2^2 + \ell^2\|\theta_x^n(t)\|_2^2 \leq C \quad \text{for any } t \in [0, \tau_n) \text{ and } n \geq 1 \quad (46)$$

for some constant C independent of n and t . Hence, $\{y^n\}$ and $\{\theta^n\}$ are globally defined in \mathbb{R}_+ and uniformly bounded, respectively, in the spaces $C^0([0, T]; H^2 \cap H_0^1(0, \pi)) \cap C^1([0, T]; L^2(0, \pi))$ and $C^0([0, T]; H_0^1(0, \pi)) \cap C^1([0, T]; L^2(0, \pi))$ for all finite $T > 0$. We show that they both admit a strongly convergent subsequence in the same spaces.

The estimate (46) shows that $\{y^n\}$ and $\{\theta^n\}$ are bounded and equicontinuous in $C^0([0, T]; L^2(0, \pi))$. By the Ascoli-Arzelà Theorem we then conclude that, up to a subsequence, $y^n \rightarrow y$ and $\theta^n \rightarrow \theta$ strongly

in $C^0([0, T]; L^2(0, \pi))$. By (46) and the embedding $H_0^1(0, \pi) \subset L^\infty(0, \pi)$ we also infer that y^n and θ^n are uniformly bounded in $[0, \pi] \times [0, T]$. Whence,

$$\begin{aligned} & \left| \int_0^\pi F(y^n(t) + \ell \sin \theta^n(t)) dx - \int_0^\pi F(y(t) + \ell \sin \theta(t)) dx \right| \\ & \leq \int_0^\pi |f(\tau(y^n(t) + \ell \sin \theta^n(t)) + (1 - \tau)(y(t) + \ell \sin \theta(t)))| (|y^n(t) - y(t)| + \ell |\theta^n(t) - \theta(t)|) dx \end{aligned}$$

for some $\tau = \tau(x, t, n) \in [0, 1]$. Since y^n and θ^n are uniformly bounded, so is $f(\tau(y^n + \ell \sin \theta^n) + (1 - \tau)(y + \ell \sin \theta))$ and the latter inequality yields

$$\left| \int_0^\pi F(y^n(t) + \ell \sin \theta^n(t)) dx - \int_0^\pi F(y(t) + \ell \sin \theta(t)) dx \right| \leq C \left(\|y^n(t) - y(t)\|_2 + \ell \|\theta^n(t) - \theta(t)\|_2 \right) \rightarrow 0. \quad (47)$$

We may argue similarly for $F(y^n - \ell \sin \theta^n)$.

Next, for every $n > m \geq 1$, we set $y^{n,m} := y^n - y^m$ and $\theta^{n,m} := \theta^n - \theta^m$. Repeating the computations which yield (46), for all $t \in [0, T]$ one gets

$$\begin{aligned} & 3\|\dot{y}^{n,m}(t)\|_2^2 + 3\|y_{xx}^{n,m}(t)\|_2^2 + \ell^2\|\dot{\theta}^{n,m}(t)\|_2^2 + \ell^2\|\theta_x^{n,m}(t)\|_2^2 = \\ & 3\|\dot{y}^{n,m}(0)\|_2^2 + 3\|y_{xx}^{n,m}(0)\|_2^2 + \ell^2\|\dot{\theta}^{n,m}(0)\|_2^2 + \ell^2\|\theta_x^{n,m}(0)\|_2^2 - \\ & 12 \int_0^\pi [F(y^n(t) + \ell \sin \theta^n(t)) - F(y^m(t) + \ell \sin \theta^m(t)) + F(y^n(t) - \ell \sin \theta^n(t)) - F(y^m(t) - \ell \sin \theta^m(t))] + \\ & 12 \int_0^\pi [F(y^n(0) + \ell \sin \theta^n(0)) - F(y^m(0) + \ell \sin \theta^m(0)) + F(y^n(0) - \ell \sin \theta^n(0)) - F(y^m(0) - \ell \sin \theta^m(0))] . \end{aligned}$$

Therefore, by using (47), we infer that

$$\sup_{t \in [0, T]} \left(3\|\dot{y}^{n,m}(t)\|_2^2 + 3\|y_{xx}^{n,m}(t)\|_2^2 + \ell^2\|\dot{\theta}^{n,m}(t)\|_2^2 + \ell^2\|\theta_x^{n,m}(t)\|_2^2 \right) \rightarrow 0 \quad \text{as } n, m \rightarrow \infty$$

so that $\{y^n\}$ and $\{\theta^n\}$ are Cauchy sequences in the spaces $C^0([0, T]; H^2 \cap H_0^1(0, \pi)) \cap C^1([0, T]; L^2(0, \pi))$ and $C^0([0, T]; H_0^1(0, \pi)) \cap C^1([0, T]; L^2(0, \pi))$, respectively. In turn this yields

$$\begin{aligned} y^n & \rightarrow y \text{ in } C^0([0, T]; H^2 \cap H_0^1(0, \pi)) \cap C^1([0, T]; L^2(0, \pi)) \quad \text{as } n \rightarrow +\infty, \\ \theta^n & \rightarrow \theta \text{ in } C^0([0, T]; H_0^1(0, \pi)) \cap C^1([0, T]; L^2(0, \pi)) \quad \text{as } n \rightarrow +\infty. \end{aligned}$$

Let $\Upsilon \in C_c^\infty(0, T)$, $\varphi \in H^2 \cap H_0^1(0, \pi)$ and $\psi \in H_0^1(0, \pi)$. We denote by φ^n and ψ^n the orthogonal projections of φ and ψ onto $X_n := \text{span}\{\sin(jx)\}_{j=1}^n$ from, respectively, the spaces $H^2 \cap H_0^1(0, \pi)$ and $H_0^1(0, \pi)$. Then (44) yields

$$\left\{ \begin{aligned} & \int_0^T (\dot{y}^n(t), \varphi^n) \dot{\Upsilon}(t) dt = \\ & \int_0^T [(y_{xx}^n(t), (\varphi^n)''') + \frac{2}{\pi}(f(y^n(t) - \ell \sin \theta^n(t)) + f(y^n(t) + \ell \sin \theta^n(t)), \varphi^n)] \Upsilon(t) dt \\ & \int_0^T (\dot{\theta}^n(t), \psi^n) \dot{\Upsilon}(t) dt = \\ & - \int_0^T [(\theta_x^n(t), (\psi^n)') + \frac{6}{\pi\ell}(f(y^n(t) - \ell \sin \theta^n(t)) - f(y^n(t) + \ell \sin \theta^n(t)), \psi^n)] \Upsilon(t) dt. \end{aligned} \right.$$

Since, by compactness,

$$f(y^n \pm \ell \sin \theta^n) \rightarrow f(y \pm \ell \sin \theta) \quad \text{in } C^0([0, T], L^2(0, \pi)),$$

by letting $n \rightarrow +\infty$ in the above system we conclude that $y_{tt} \in C^0([0, T]; H^*)$ and $\theta_{tt} \in C^0([0, T]; H^{-1})$. The verification of the initial conditions follows by noting that $y^n(0) \rightarrow y(0)$ in $H^2 \cap H_0^1(0, \pi)$, $\dot{y}^n(0) \rightarrow \dot{y}(0)$ in $L^2(0, \pi)$, $\theta^n(0) \rightarrow \theta(0)$ in $H_0^1(0, \pi)$ and $\dot{\theta}^n(0) \rightarrow \dot{\theta}(0)$ in $L^2(0, \pi)$. The proof of the existence part is complete, once we observe that all the above results hold for any $T > 0$.

Next we turn to the uniqueness issue. Since it follows by repeating the proof of [19, Theorem 11] with some minor changes we only give a sketch of it. Assume problem (4)-(5)-(6) admits two couples of solutions (y^1, θ^1) and (y^2, θ^2) and denote $(\bar{y}, \bar{\theta}) := (y^1 - y^2, \theta^1 - \theta^2)$. Next, we put $\mu_s(t) = -\int_t^s \bar{y}(\tau) d\tau$, $\eta_s(t) = -\int_t^s \bar{\theta}(\tau) d\tau$, $Y(t) = \int_0^t \bar{y}(\tau) d\tau$ and $\Theta(t) = \int_0^t \bar{\theta}(\tau) d\tau$ with $0 < t \leq s$. Note that $\mu'_s(t) = \bar{y}(t)$, $\eta'_s(t) = \bar{\theta}(t)$, $\mu_s(t) = Y(t) - Y(s)$ and $\eta_s(t) = \Theta(t) - \Theta(s)$. Multiply the equation satisfied by \bar{y} times μ_s and the one satisfied by $\bar{\theta}$ times η_s . By integrating, one deduces

$$\left\{ \begin{array}{l} \frac{1}{2} \|\bar{y}(s)\|_2^2 + \frac{1}{2} \|Y_{xx}(s)\|_2^2 = \\ \int_0^s [f(y^1 - \ell \sin \theta^1) + f(y^1 + \ell \sin \theta^1) - f(y^2 - \ell \sin \theta^2) - f(y^2 + \ell \sin \theta^2)] \mu_s dt \\ \frac{\ell}{6} \|\bar{\theta}(s)\|_2^2 + \frac{\ell}{6} \|\Theta_x(s)\|_2^2 = \\ \int_0^s [\cos(\theta_1)(f(y^1 - \ell \sin \theta^1) - f(y^1 + \ell \sin \theta^1)) - \cos(\theta_2)(f(y^2 - \ell \sin \theta^2) - f(y^2 + \ell \sin \theta^2))] \eta_s dt. \end{array} \right.$$

Exploiting the fact that $f \in \text{Lip}_{loc}(\mathbb{R})$ and (46), one infers that

$$\|\bar{y}(s)\|_2^2 + \|\bar{\theta}(s)\|_2^2 + \|Y_{xx}(s)\|_2^2 + \|\Theta_x(s)\|_2^2 \leq C \int_0^s (\|\bar{y}(t)\|_2^2 + \|\bar{\theta}(t)\|_2^2 + \|Y_{xx}(t)\|_2^2 + \|\Theta_x(t)\|_2^2) dt$$

where both the Young and the Poincaré inequalities have been exploited. Hence, by the Gronwall Lemma, $\|\bar{y}(s)\|_2 = \|\bar{\theta}(s)\|_2 = 0$ and uniqueness follows.

7 Proof of Theorem 2

We start with a calculus lemma.

Lemma 1. *Let $a, b, c, d > 0$ and let $A = \{(x, y) \in \mathbb{R}^2; 0 < y < dx, ax + y + by^2 < c\}$. Let*

$$K_1 = \frac{2c^2 d}{(a+d)^2 + 2bcd^2 + (a+d)\sqrt{(a+d)^2 + 4bcd^2}} > 0,$$

$$K_2 = \frac{2(1+3bc)^{3/2} - 2 - 9bc}{27ab^2} > 0.$$

Then

$$\sup_{(x,y) \in A} xy = \max\{K_1, K_2\}.$$

Proof. The set A is delimited by two segments and an arch of parabola, see Figure 5. In order to find the supremum of xy , we intersect the hyperbola $xy = k$ with the closure of A and the maximum of xy on such set belongs to the bold face part of the boundary in Figure 5. Whence, either it coincides with the point M or with a point where a hyperbola $xy = k > 0$ is tangent to the parabola.

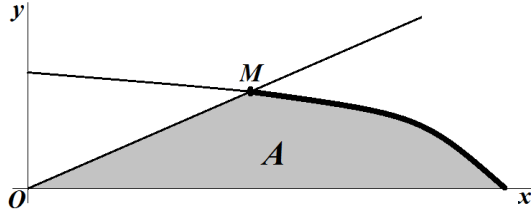


Figure 5: The set A .

The coordinates of the point M are given by

$$M \left(\frac{\sqrt{(a+d)^2 + 4bcd^2} - (a+d)}{2bd^2}, \frac{\sqrt{(a+d)^2 + 4bcd^2} - (a+d)}{2bd} \right)$$

which belongs to the hyperbola $xy = K_1$.

The hyperbola tangent to the parabola is found by solving the following system:

$$xy = k, \quad ax + y + by^2 = c.$$

We have to determine for which k this system admits a double solution. We find $k = K_2$.

Summarizing, the hyperbola having equation $xy = k$ intersect the bold face of the boundary in Figure 5 for $k = K_1$ if the intersection is at the point M and for $k = K_2$ if the hyperbola is tangent to the parabola. This proves the statement. \square

Then we recall a Gagliardo-Nirenberg [13, 30] inequality. Since we are interested in the value of the constant and since we were unable to find one in literature, we also give its proof. We do not know if the optimal constant is indeed 1.

Lemma 2. For all $u \in H_0^1(0, \pi)$ we have $\|u\|_\infty^2 \leq \|u\|_2 \|u'\|_2$.

Proof. Since symmetrization leaves L^q -norms of functions invariant and decreases the L^p -norms of the derivatives, see e.g. [1, Theorem 2.7], we may restrict our attention to functions which are symmetric, positive and decreasing with respect to the center of the interval. If u is one such function we have

$$\int_0^{\pi/2} u(\tau)u'(\tau) d\tau = \int_0^{\pi/2} |u(\tau)u'(\tau)| d\tau = \int_{\pi/2}^\pi |u(\tau)u'(\tau)| d\tau = \frac{1}{2} \int_0^\pi |u(\tau)u'(\tau)| d\tau.$$

Therefore, by the Hölder inequality we have

$$\|u\|_\infty^2 = u\left(\frac{\pi}{2}\right)^2 = \int_0^{\pi/2} [u(\tau)^2]' d\tau = 2 \int_0^{\pi/2} u(\tau)u'(\tau) d\tau = \int_0^\pi |u(\tau)u'(\tau)| d\tau \leq \|u\|_2 \|u'\|_2. \quad \square$$

In particular, by Lemma 2, we have

$$\|w^m(t)\|_\infty^4 \leq \|w^m(t)\|_2^2 \|w_x^m(t)\|_2^2. \quad (48)$$

Note also that an improved Poincaré inequality yields

$$\|w^m(t)\|_2 \leq \frac{1}{m+1} \|w_x^m(t)\|_2. \quad (49)$$

Moreover, by (17), we may also rewrite (15) as

$$\begin{aligned}
E &= \frac{\|y_t(t)\|_2^2}{2} + \frac{\|z_t^m(t)\|_2^2}{6} + \frac{\|w_t^m(t)\|_2^2}{6} + \frac{\|y_{xx}(t)\|_2^2}{2} + \frac{\|z_x^m(t)\|_2^2}{6} + \frac{\|w_x^m(t)\|_2^2}{6} \\
&\quad + \|y(t)\|_2^2 + \|z^m(t)\|_2^2 + \|w^m(t)\|_2^2 + \frac{\|y(t)\|_4^4}{2} + \frac{\|z(t)\|_4^4}{2} + 3 \int_0^\pi y(x,t)^2 z(x,t)^2 dx \\
(\text{H\"older}) &> \frac{\|w_x^m(t)\|_2^2}{6} + \|w^m(t)\|_2^2 + \frac{\|z(t)\|_4^4}{2\pi} \\
\text{by (17)} &> \frac{\|w_x^m(t)\|_2^2}{6} + \|w^m(t)\|_2^2 + \frac{\|w^m(t)\|_2^4}{2\pi}. \tag{50}
\end{aligned}$$

The two constraints (49) and (50) are as in Lemma 1 with $x = \|w_x^m(t)\|_2^2$, $y = \|w^m(t)\|_2^2$, and

$$a = \frac{1}{6}, \quad b = \frac{1}{2\pi}, \quad c = E, \quad d = \frac{1}{(m+1)^2}.$$

Therefore, Lemma 1 combined with (48) states that

$$\|w^m(t)\|_\infty^4 \leq \max\{K_1, K_2\} \tag{51}$$

where

$$\begin{aligned}
K_1 &= \frac{72\pi E^2 (m+1)^2}{\pi(m^2 + 2m + 7)^2 + 36E + (m^2 + 2m + 7)\sqrt{\pi^2(m^2 + 2m + 7)^2 + 72\pi E}}, \\
K_2 &= \frac{16\pi^2}{9} \left[\left(1 + \frac{3E}{2\pi}\right)^{3/2} - 1 \right] - 4\pi E.
\end{aligned}$$

Then (51) yields $\|w^m(t)\|_\infty \leq \omega$, provided either $K_1 \leq \omega^4$ or $K_2 \leq \omega^4$. The first occurs whenever (18) holds whereas the second case occurs whenever (19) holds. Theorem 2 is so proved.

8 Proof of Theorem 3

For any $E > 0$ we put

$$\Lambda_\pm(E) := 2\sqrt{1 + \frac{2}{3}E} \pm 2.$$

Then we prove

Lemma 3. *For any $\alpha, \beta \in \mathbb{R}$ problem (31) admits a unique solution \bar{y} which is periodic of period*

$$T(E) = \frac{8}{\sqrt{3}} \int_0^1 \frac{ds}{\sqrt{(\Lambda_+(E) + \Lambda_-(E)s^2)(1-s^2)}}. \tag{52}$$

In particular, the map $E \mapsto T(E)$ is strictly decreasing and $\lim_{E \rightarrow 0} T(E) = 2\pi/\sqrt{3}$.

Proof. The existence, uniqueness and periodicity of the solution \bar{y} is a known fact from the theory of ODE's. For a given $E > 0$, we may rewrite (32) as

$$\dot{y}^2 = 2E - 3y^2 - \frac{3}{4}y^4. \tag{53}$$

Hence,

$$\|\bar{y}\|_\infty = \sqrt{\Lambda_-(E)}. \tag{54}$$

Since (31) merely consists of odd terms, the period $T(E)$ of \bar{y} is the double of the width of an interval of monotonicity for \bar{y} . Since the problem is autonomous, we may assume that $\bar{y}(0) = -\|\bar{y}\|_\infty$ and $\dot{\bar{y}}(0) = 0$; then, by symmetry and periodicity, we have that $\bar{y}(T/2) = \|\bar{y}\|_\infty$ and $\dot{\bar{y}}(T/2) = 0$. By rewriting (53) as

$$\dot{y} = \frac{\sqrt{3}}{2} \sqrt{(\Lambda_+(E) + y^2)(\Lambda_-(E) - y^2)} \quad \forall t \in \left(0, \frac{T}{2}\right),$$

by separating variables, and upon integration over the time interval $(0, T/2)$ we obtain

$$\frac{T(E)}{2} = \frac{2}{\sqrt{3}} \int_{-\|\bar{y}\|_\infty}^{\|\bar{y}\|_\infty} \frac{dy}{\sqrt{(\Lambda_+(E) + y^2)(\Lambda_-(E) - y^2)}}.$$

Then, using the fact that the integrand is even with respect to y and through a change of variable,

$$T(E) = \frac{8}{\sqrt{3}} \int_0^{\|\bar{y}\|_\infty} \frac{dy}{\sqrt{(\Lambda_+(E) + y^2)(\|\bar{y}\|_\infty^2 - y^2)}} = \frac{8}{\sqrt{3}} \int_0^1 \frac{ds}{\sqrt{(\Lambda_+(E) + \Lambda_-(E)s^2)(1 - s^2)}},$$

which proves (52). Both the maps $E \mapsto \Lambda_\pm(E)$ are continuous and increasing for $E \in [0, \infty)$ and $\Lambda_-(0) = 0$, $\Lambda_+(0) = 4$. Whence, $E \mapsto T(E)$ is strictly decreasing and

$$\lim_{E \rightarrow 0} T(E) = T(0) = \frac{4}{\sqrt{3}} \int_0^1 \frac{ds}{\sqrt{1 - s^2}} = \frac{2\pi}{\sqrt{3}},$$

a result that could have also been obtained by noticing that, as $E \rightarrow 0$, the equation (31) tends to $\ddot{y} + 3y = 0$. \square

In the sequel, we need bounds for $T(E)$. From (52) we see that, by taking $s = 0$ in the first polynomial under square root,

$$T(E) \leq \frac{8}{\sqrt{3\Lambda_+(E)}} \int_0^1 \frac{ds}{\sqrt{1 - s^2}} = \frac{4\pi}{\sqrt{3\Lambda_+(E)}} \implies \frac{16\pi^2}{T(E)^2} \geq 3\Lambda_+(E). \quad (55)$$

Moreover, by taking $s = 1$ in the first polynomial under square root, we infer

$$T(E) \geq \frac{8}{\sqrt{3}\sqrt{\Lambda_+(E) + \Lambda_-(E)}} \int_0^1 \frac{ds}{\sqrt{1 - s^2}} = \frac{2\pi}{\sqrt{9 + 6E}} \implies \frac{4\pi^2}{T(E)^2} \leq \sqrt{9 + 6E}. \quad (56)$$

Let us now consider (33). With the initial conditions $\xi(0) = \dot{\xi}(0) = 0$, the unique solution of (33) is $\xi \equiv 0$. We are interested in determining whether the trivial solution is stable in the Lyapunov sense, namely if the solutions of (33) with small initial data $|\xi(0)|$ and $|\dot{\xi}(0)|$ remain small for all $t \geq 0$. By Lemma 3, the function $\bar{y}(t)^2$ is $T/2$ -periodic. Then a is a positive $T/2$ -periodic function and a stability criterion for the Hill equation due to Zhukovskii [40], see also [39, Chapter VIII], states that the trivial solution of (33) is stable provided that

$$\frac{4\pi^2}{T(E)^2} \leq a(t) \leq \frac{16\pi^2}{T(E)^2}. \quad (57)$$

Let us translate this condition in terms of $\|\bar{y}\|_\infty$. By the definition of a in (33) and by (54), we have

$$7 \leq a(t) \leq 7 + \frac{27}{2} \|\bar{y}\|_\infty^2 = -20 + 9\sqrt{9 + 6E}.$$

Whence, (57) holds if both

$$\frac{4\pi^2}{T(E)^2} \leq 7 \quad \text{and} \quad -20 + 9\sqrt{9 + 6E} \leq \frac{16\pi^2}{T(E)^2}. \quad (58)$$

In turn, by (55)-(56), the inequalities in (58) certainly hold if

$$\sqrt{9+6E} \leq 7 \quad \text{and} \quad -20 + 9\sqrt{9+6E} \leq 3\Lambda_+(E).$$

The first of such inequalities is fulfilled provided that $E \leq \frac{20}{3}$; the second inequality is satisfied if

$$E \leq \frac{235}{294} \approx 0.799, \quad \|\bar{y}\|_\infty \leq \sqrt{\frac{10}{21}} \approx 0.69, \quad (59)$$

which is more stringent and, therefore, yields a sufficient condition for (57) to hold. This proves Theorem 3.

Remark 2. The sufficient condition (57) is fulfilled as long as both (58) hold. Numerically, we see that the former is satisfied for $E \lesssim 10.445$ whereas the latter is satisfied for $E \lesssim 0.944$. The most stringent is the second one which corresponds to $\|\bar{y}\|_\infty \lesssim 0.74$, not significantly better than (59).

9 Proof of Theorem 5

For any $E > 0$, we put

$$\Lambda_\pm^j(E) = 2\sqrt{\frac{(j^4+2)^2}{9} + \frac{2}{3}E} \pm \frac{2}{3}(j^4+2) \quad (j=1,2).$$

Then (39), with $E_j = E$, reads

$$y_j^2 = \frac{3}{4}(\Lambda_+^j(E) + y_j^2)(\Lambda_-^j(E) - y_j^2) \quad (j=1,2).$$

By this, since any j -th vertical mode \bar{y}_j satisfies (39), we deduce

$$\|\bar{y}_j\|_\infty = \sqrt{\Lambda_-^j(E)} \quad (j=1,2). \quad (60)$$

Then, the same analysis performed in Section 8 yields that the \bar{y}_j are periodic functions of period

$$T_j(E) = \frac{8}{\sqrt{3}} \int_0^1 \frac{ds}{\sqrt{(\Lambda_+^j(E) + \Lambda_-^j(E)s^2)(1-s^2)}}.$$

In particular, the map $E \mapsto T_j(E)$ is strictly decreasing and $\lim_{E \rightarrow 0} T_j(E) = 2\pi/\sqrt{j^4+2}$. Furthermore, the following estimates hold

$$T_j(E) \leq \frac{8}{\sqrt{3\Lambda_+^j(E)}} \int_0^1 \frac{ds}{\sqrt{1-s^2}} = \frac{4\pi}{\sqrt{3\Lambda_+^j(E)}} \implies \frac{16\pi^2}{T_j(E)^2} \geq 3\Lambda_+^j(E) \quad (61)$$

and

$$T_j(E) \geq \frac{8}{\sqrt{3}\sqrt{\Lambda_+^j(E) + \Lambda_-^j(E)}} \int_0^1 \frac{ds}{\sqrt{1-s^2}} = \frac{2\pi}{\sqrt[4]{(j^4+2)^2 + 6E}} \implies \frac{4\pi^2}{T_j(E)^2} \leq \sqrt{(j^4+2)^2 + 6E}. \quad (62)$$

Consider the first mode $(Y_1, 0) = (\bar{y}_1, 0, 0, 0)$. For $j=1$ the system (40) reads

$$\begin{cases} \ddot{\xi}_1(t) + (7 + \frac{27}{2}\bar{y}_1(t)^2)\xi_1(t) = 0 \\ \ddot{\xi}_2(t) + (10 + 9\bar{y}_1(t)^2)\xi_2(t) = 0. \end{cases} \quad (63)$$

If the trivial solution of both the equations in (63) is stable then system (63) itself is stable and Definition 2 is satisfied, see [39, Theorem II-Chapter III-vol 1]. Since the first equation in (63) coincides with (33), the proof of Theorem 3 yields the torsional stability provided that (59) holds. For the second equation in (63), by applying again the Zhukovskii stability criterion (57), we see that the trivial solution is stable provided that

$$\frac{4\pi^2}{T(E)^2} \leq 10 + 9\bar{y}_1(t)^2 \leq \frac{16\pi^2}{T(E)^2}.$$

By arguing as in the proof of Theorem 3, see (58), we reach the bounds (41) which are more stringent than (59). These are the bounds for the torsional stability of the first vertical mode.

For the second vertical mode $(Y_2, 0) = (0, \bar{y}_2, 0, 0)$ we proceed similarly, but now system (40) reads

$$\begin{cases} \ddot{\xi}_1(t) + (7 + 9\bar{y}_2(t)^2)\xi_1(t) = 0 \\ \ddot{\xi}_2(t) + (10 + \frac{27}{2}\bar{y}_2(t)^2)\xi_2(t) = 0. \end{cases} \quad (64)$$

Concerning the first equation, a different stability criterion for the Hill equation due to Zhukovskii [40], see also [39, Chapter VIII], states that the trivial solution is stable provided that

$$0 \leq 7 + 9\bar{y}_2(t)^2 \leq \frac{4\pi^2}{T_2(E)^2}. \quad (65)$$

The left inequality is always satisfied while the second inequality is satisfied if $7 + 9\|\bar{y}_2\|_\infty^2 \leq \frac{4\pi^2}{T_2(E)^2}$. Whence, by (61) a sufficient condition for the stability is

$$7 + 9\|\bar{y}_2\|_\infty^2 \leq \frac{3}{4}\Lambda_+^2(E) \iff E \leq \frac{38}{3}, \quad \|\bar{y}_2\|_\infty \leq \frac{2}{\sqrt{3}}. \quad (66)$$

Next we focus on the second equation in (64). The stability of the trivial solution is ensured if $0 \leq 10 + \frac{27}{2}\bar{y}_2(t)^2 \leq \frac{4\pi^2}{T_2(E)^2}$, that is, if $10 + \frac{27}{2}\|\bar{y}_2\|_\infty^2 \leq \frac{4\pi^2}{T_2(E)^2}$. Whence, by (61) with $j = 2$, a sufficient condition for the stability is

$$10 + \frac{27}{2}\|\bar{y}_2\|_\infty^2 \leq \frac{3}{4}\Lambda_+^2(E) \iff E \leq \frac{5024}{867}, \quad \|\bar{y}_2\|_\infty \leq \sqrt{\frac{32}{51}}. \quad (67)$$

This is more restrictive than (66) and is therefore a sufficient condition for the stability of the second vertical mode \bar{y}_2 . The proof of Theorem 5 is now complete.

10 Appendix

In order to determine the projected system, we need to multiply by $\sin(jx)$ ($j \in \mathbb{N}$) the equations in (14) and then integrate over $(0, \pi)$. Therefore, we intensively exploit the following

Lemma 4. *For all $k \in \mathbb{N}$ we have*

$$c_{k,k,k} = \frac{8}{\pi} \int_0^\pi \sin^4(kx) dx = 3.$$

For all $l, k \in \mathbb{N}$ ($l \neq k$) we have

$$c_{l,k,k} = \frac{8}{\pi} \int_0^\pi \sin^3(kx) \sin(lx) dx = \begin{cases} -1 & \text{if } l = 3k \\ 0 & \text{if } l \neq 3k. \end{cases}$$

For all $l, k \in \mathbb{N}$ ($l \neq k$) we have

$$c_{l,l,k} = \frac{8}{\pi} \int_0^\pi \sin^2(kx) \sin^2(lx) dx = 2.$$

For all $l, j, k \in \mathbb{N}$ (all different and $l < j$) we have

$$c_{l,j,k} = \frac{8}{\pi} \int_0^\pi \sin^2(kx) \sin(jx) \sin(lx) dx = \begin{cases} 1 & \text{if } j + l = 2k \\ -1 & \text{if } j - l = 2k \\ 0 & \text{if } j \pm l \neq 2k. \end{cases}$$

Proof. By linearization we know that

$$\sin^4 \theta = \frac{\cos(4\theta) - 4 \cos(2\theta) + 3}{8}, \quad \sin^3 \theta = \frac{3 \sin \theta - \sin(3\theta)}{4} \quad \forall \theta \in \mathbb{R}.$$

Therefore, we may readily compute the two integrals

$$\begin{aligned} \int_0^\pi \sin^4(kx) dx &= \int_0^\pi \frac{\cos(4kx) - 4 \cos(2kx) + 3}{8} dx = \frac{3}{8} \pi, \\ \int_0^\pi \sin^3(kx) \sin(lx) dx &= \int_0^\pi \sin(lx) \frac{3 \sin(kx) - \sin(3kx)}{4} dx \\ &= -\frac{1}{4} \int_0^\pi \sin(lx) \sin(3kx) dx = \begin{cases} -\frac{\pi}{8} & \text{if } l = 3k \\ 0 & \text{if } l \neq 3k. \end{cases} \end{aligned}$$

Next, we compute

$$\int_0^\pi \sin^2(kx) \sin^2(lx) dx = \frac{1}{4} \int_0^\pi (1 - \cos(2kx))(1 - \cos(2lx)) dx = \frac{\pi}{4}.$$

Finally, by using the prosthaphaeresis formula, we get

$$\begin{aligned} \int_0^\pi \sin^2(kx) \sin(jx) \sin(lx) dx &= \frac{1}{2} \int_0^\pi (1 - \cos(2kx)) \sin(jx) \sin(lx) dx \\ &= \frac{1}{4} \int_0^\pi \cos(2kx) [\cos((j-l)x) + \cos((j+l)x)] dx = \begin{cases} \frac{\pi}{8} & \text{if } j + l = 2k \\ -\frac{\pi}{8} & \text{if } j - l = 2k \\ 0 & \text{if } j \pm l \neq 2k. \end{cases} \end{aligned}$$

The proof of the four identities is so complete. \square

Lemma 4 allows to compute the coefficients of problems (21) and (27). For the former, one needs to compute coefficients of the kind $c_{l,k,k}$. If $m \geq 3$, since these coefficients do not vanish when $l = 3k$, (21) with initial conditions (24) may admit solutions $(Y, 0)$ which have more than one nontrivial component within the vector Y . Then the study of the stability of the k -th vertical mode, see Definition 1, cannot be reduced to that of a single Hill equation as in the cases $m = 1$ and $m = 2$. One obtains, instead, a system of coupled equations. Hence, when $m \geq 3$ the theoretical stability analysis requires more refined tools and we do not address this problem here. On the other hand, we performed several numerical experiments which confirm the conclusions stated in Section 3.4.

Acknowledgements. The authors are members of the Gruppo Nazionale per l'Analisi Matematica, la Probabilità e le loro Applicazioni (GNAMPA) of the Istituto Nazionale di Alta Matematica (INdAM). This work has been partially supported by the research project FIR (Futuro in Ricerca) 2013 *Geometrical and qualitative aspects of PDE's* and by the PRIN project *Equazioni alle derivate parziali di tipo ellittico e parabolico: aspetti geometrici, disuguaglianze collegate, e applicazioni*.

References

- [1] F. Almgren, E. Lieb, *Symmetric decreasing rearrangement is sometimes continuous*, J. Amer. Math. Soc. **2**, 683-773 (1989)
- [2] O.H. Ammann, T. von Kármán, G.B. Woodruff, *The failure of the Tacoma Narrows Bridge*, Federal Works Agency, Washington D.C. (1941)
- [3] G. Arioli, F. Gazzola, *A new mathematical explanation of what triggered the catastrophic torsional mode of the Tacoma Narrows Bridge collapse*, to appear in Appl. Math. Modelling
- [4] E. Berchio, A. Ferrero, F. Gazzola, P. Karageorgis, *Qualitative behavior of global solutions to some nonlinear fourth order differential equations*, J. Diff. Eq. **251**, 2696-2727 (2011)
- [5] K.Y. Billah, R.H. Scanlan, *Resonance, Tacoma Narrows Bridge failure, and undergraduate physics textbooks*, Amer. J. Physics **59**, 118-124 (1991)
- [6] M.A. Biot, T. von Kármán, *Mathematical methods in engineering: an introduction to the mathematical treatment of engineering problems*, McGraw Hill, New York (1940)
- [7] F. Bleich, C.B. McCullough, R. Rosecrans, G.S. Vincent, *The mathematical theory of vibration in suspension bridges*, U.S. Dept. of Commerce, Bureau of Public Roads, Washington D.C. (1950)
- [8] J.M.W. Brownjohn, *Observations on non-linear dynamic characteristics of suspension bridges*, Earthquake Engineering & Structural Dynamics **23**, 1351-1367 (1994)
- [9] J. Chu, J. Lei, M. Zhang, *The stability of the equilibrium of a nonlinear planar system and application to the relativistic oscillator*, J. Diff. Eq. **247**, 530-542 (2009)
- [10] L. D'Ambrosio, E. Mitidieri, *Liouville theorems for semilinear polyharmonic equations and inequalities*, preprint 2014
- [11] S.H. Doole, S.J. Hogan, *Non-linear dynamics of the extended Lazer-McKenna bridge oscillation model*, Dyn. Stab. Syst. **15**, 43-58 (2000)
- [12] A. Ferrero, F. Gazzola, *A partially hinged rectangular plate as a model for suspension bridges*, to appear in Disc. Cont. Dynam. Syst. A
- [13] E. Gagliardo, *Proprietà di alcune classi di funzioni in più variabili*, Ricerche Mat. **7**, 102-137 (1958)
- [14] B.G. Galerkin, *Sterzhni i plastinki: reydy v nekotorykh voprosakh uprugogo ravnovesiya sterzhney i plastinok*, Vestnik Inzhenerov **1 (19)**, 897-908 (1915)
- [15] F. Gazzola, *Nonlinearity in oscillating bridges*, Electron. J. Diff. Equ. no.211, 1-47 (2013)
- [16] F. Gazzola, R. Pavani, *Blow up oscillating solutions to some nonlinear fourth order differential equations*, Nonlinear Analysis **74**, 6696-6711 (2011)
- [17] F. Gazzola, R. Pavani, *Wide oscillations finite time blow up for solutions to nonlinear fourth order differential equations*, Arch. Rat. Mech. Anal. **207**, 717-752 (2013)
- [18] G.W. Hill, *On the part of the motion of the lunar perigee which is a function of the mean motions of the sun and the moon*, Acta Math. **8**, 1-36 (1886)
- [19] G. Holubová, A. Matas, *Initial-boundary value problem for nonlinear string-beam system*, J. Math. Anal. Appl. **288**, 784-802 (2003)
- [20] H.M. Irvine, *Cable structures*, MIT Press Series in Structural Mechanics, Massachusetts (1981)
- [21] I.V. Ivanov, D.S. Velchev, M. Kneć, T. Sadowski, *Computational models of laminated glass plate under transverse static loading*, In: Shell-like structures, non-classical theories and applications; H. Altenbach, V. Eremeyev (Eds.), Springer, Berlin, Advanced Structured Materials **15**, 469-490 (2011)

- [22] A. Jenkins, *Self-oscillation*, Physics Reports **525**, 167-222 (2013)
- [23] W. Lacarbonara, *Nonlinear structural mechanics*, Springer (2013)
- [24] A.C. Lazer, P.J. McKenna, *Large-amplitude periodic oscillations in suspension bridges: some new connections with nonlinear analysis*, SIAM Rev. **32**, 537-578 (1990)
- [25] P.J. McKenna, *Torsional oscillations in suspension bridges revisited: fixing an old approximation*, Amer. Math. Monthly **106**, 1-18 (1999)
- [26] P.J. McKenna, *Large-amplitude periodic oscillations in simple and complex mechanical systems: outgrowths from nonlinear analysis*, Milan J. Math. **74**, 79-115 (2006)
- [27] P.J. McKenna, C.Ó Tuama, *Large torsional oscillations in suspension bridges revisited again: vertical forcing creates torsional response*, Amer. Math. Monthly **108**, 738-745 (2001)
- [28] P.J. McKenna, W. Walter, *Nonlinear oscillations in a suspension bridge*, Arch. Rat. Mech. Anal. **98**, 167-177 (1987)
- [29] K.S. Moore, *Large torsional oscillations in a suspension bridge: multiple periodic solutions to a nonlinear wave equation*, SIAM J. Math. Anal. **33**, 1411-1429 (2002)
- [30] L. Nirenberg, *On elliptic partial differential equations*, Ann. Scuola Norm. Sup. Pisa **13**, 115-162 (1959)
- [31] R. Ortega, *The stability of the equilibrium of a nonlinear Hill's equation*, SIAM J. Math. Anal. **25**, 1393-1401 (1994)
- [32] B.G. Pittel, V.A. Yakubovich, *A mathematical analysis of the stability of suspension bridges based on the example of the Tacoma bridge (Russian)*, Vestnik Leningrad Univ. **24**, 80-91 (1969)
- [33] R.H. Plaut, F.M. Davis, *Sudden lateral asymmetry and torsional oscillations of section models of suspension bridges*, J. Sound and Vibration **307**, 894-905 (2007)
- [34] R.H. Scanlan, *Developments in low-speed aeroelasticity in the civil engineering field*, AIAA Journal **20**, 839-844 (1982)
- [35] R.H. Scanlan, J.J. Tomko, *Airfoil and bridge deck flutter derivatives*, J. Eng. Mech. **97**, 1717-1737 (1971)
- [36] R. Scott, *In the wake of Tacoma. Suspension bridges and the quest for aerodynamic stability*, ASCE Press (2001)
- [37] F.C. Smith, G.S. Vincent, *Aerodynamic stability of suspension bridges: with special reference to the Tacoma Narrows Bridge, Part II: Mathematical analysis*, Investigation conducted by the Structural Research Laboratory, University of Washington - Seattle: University of Washington Press (1950)
- [38] F. Verhulst, *Nonlinear differential equations and dynamical systems*, Springer-Verlag Berlin (1990)
- [39] V.A. Yakubovich, V.M. Starzhinskii, *Linear differential equations with periodic coefficients*, J. Wiley & Sons, New York (1975) (Russian original in Izdat. Nauka, Moscow, 1972)
- [40] N.E. Zhukovskii, *Finiteness conditions for integrals of the equation $d^2y/dx^2 + py = 0$ (Russian)*, Mat. Sb. **16**, 582-591 (1892)