

Influence of LV Neutral Grounding on Global Earthing Systems

*Original*

Influence of LV Neutral Grounding on Global Earthing Systems / Cafaro, G.; Montegiglio, P.; Torelli, F.; Barresi, A.; Colella, Pietro; De Simone, A.; Di Silvestre, M. L.; Martirano, L.; Morozova, E.; Napoli, Roberto; Parise, G.; Parise, L.; Pons, Enrico; Riva Sanseverino, E.; Tommasini, Riccardo; Tummolillo, F.; Valtorta, G.; Zizzo, G.. - CD-ROM. - (2015), pp. 389-394. ( 2015 IEEE 15th International Conference on Environment and Electrical Engineering Roma June 10-13, 2015) [10.1109/EEEIC.2015.7165193].

*Availability:*

This version is available at: 11583/2611956 since: 2020-01-24T09:33:22Z

*Publisher:*

IEEE

*Published*

DOI:10.1109/EEEIC.2015.7165193

*Terms of use:*

This article is made available under terms and conditions as specified in the corresponding bibliographic description in the repository

*Publisher copyright*

IEEE postprint/Author's Accepted Manuscript

©2015 IEEE. Personal use of this material is permitted. Permission from IEEE must be obtained for all other uses, in any current or future media, including reprinting/republishing this material for advertising or promotional purposes, creating new collecting works, for resale or lists, or reuse of any copyrighted component of this work in other works.

(Article begins on next page)

# Influence of LV Neutral Grounding on Global Earthing Systems

G. Cafaro<sup>\*</sup>, P. Montegiglio<sup>\*</sup>, F. Torelli<sup>\*</sup>, A. Barresi<sup>‡</sup>, P. Colella<sup>§</sup>, A. De Simone<sup>†</sup>, M. L. Di Silvestre<sup>¶</sup>, L. Martirano<sup>¶</sup>, E. Morozova<sup>†</sup>, R. Napoli<sup>§</sup>, G. Parise<sup>¶</sup>, L. Parise<sup>¶</sup>, E. Pons<sup>§</sup>, E. Riva Sanseverino<sup>¶</sup>, R. Tommasini<sup>§</sup>, F. Tummolillo<sup>‡</sup>, G. Valtorta<sup>†</sup> and G. Zizzo<sup>¶</sup>

<sup>\*</sup> Dipartimento di Ingegneria Elettrica e dell'Informazione, Politecnico di Bari, Bari, Italy, giuseppe.cafaro@poliba.it

<sup>†</sup> Enel Distribuzione SpA, Roma, Italy, angelo.desimone@enel.com

<sup>‡</sup> IMQ, Milano, Italy, filomena.tummolillo@imq.it

<sup>§</sup> Dipartimento Energia, Politecnico di Torino, Torino, Italy, pietero.colella@polito.it

<sup>¶</sup> Dipartimento di Energia, Ingegneria dell'Informazione e Modelli Matematici,

Università degli studi di Palermo, Palermo, Italy, gaetano.zizzo@unipa.it

<sup>¶</sup> Dipartimento di Ingegneria Astronautica, Elettrica ed Energetica, Università degli Studi di Roma "La Sapienza", Roma, Italy, luigi.martirano@uniroma1.it

**Abstract**— International Standards define a Global Earthing System as an earthing net created interconnecting local Earthing Systems (generally through the shield of MV cables and/or bare buried conductors). In Italy the Regulatory Authority for Electricity and Gas requires Distributors to guarantee the electrical continuity of LV neutral conductor. This requirement has led to the standard practice of realizing “reinforcement groundings” along the LV neutral conductor path and at users’ delivery cabinet. Moreover, in urban high load scenarios (prime candidates to be part of a Global Earthing System), it is common that LV distribution scheme creates, through neutral conductors, an effective connection between grounding systems of MV/LV substations, modifying Global Earthing System consistency. Aim of this paper is to evaluate the effect, in terms of electrical safety, of the above mentioned LV neutral distribution scheme when an MV-side fault to ground occurs. At this purpose simulations are carried out on a realistic urban test case and suitable evaluation indexes are proposed.

**Keywords**—Global Earthing System; GES; Global Grounding System; GGS; Ground potential; Maxwell Sub-areas Method; LV neutral conductor

## I. INTRODUCTION

Grounding systems surely are a traditional topic in electrical engineering [1]-[3]. With reference to their quasi-static behaviour, the research field could seem fully explored. However, the need of electrical services widespread delivery, along with the significant increase of demand in concentrated areas (i.e. industrial/urban areas), makes it necessary to reconsider some aspects of groundings.

International Standards [4], [5], defining the Global Earthing System (GES), point out how GES advantages result primarily from two aspects:

- grounding systems *Interconnection*;
- *Proximity* of interconnected grounding systems.

GES, in fact, arises from the interconnection between distributors’ (as well as private users’) MV/LV substations Earthing Systems (ES). This interconnection, made (at least)

with the metal shield of MV cables, allows the repartition of MV single line to ground fault currents in more than one injection point in the soil [6], thus producing a consistent reduction of Earth Potential Rise (EPR) of the faulted substation.

Proximity effects should avoid the presence of dangerous touch voltages in the considered area (*quasi-equipotentiality* condition).

A full discussion on the above mentioned concepts (*Interconnection*, *Proximity* and *Quasi-equipotentiality*) and their implications can be found in [7].

The Italian Authority, in its effort to guarantee the best service quality to LV users (TT system), imposes strict constraints on Distributors System Operator (DSO) regarding LV neutral continuity.

As a consequence, LV neutral conductors are grounded (typically with a single grounding rod) at each user delivery cabinet and, sometimes, along their path (neutral *reinforcement groundings*).

In areas characterized by high load, DSOs often reach users’ delivery nodes with LV lines coming from two different substations (belonging to the same or different feeding stations). This choice is meant to ensure the quickest post-contingency power restoration for customers, providing them the opportunity to be fed from different sides. To make LV network radial in nature, lines are disconnected in a distribution box, whereas neutral conductors are never interrupted. This makes for an effective interconnection between substation grounding systems of the considered area.

What above said, combined with neutral reinforcement groundings, produces a further increase in the density of the earthing network serving the area, with the possible effect of modifying GES consistency.

In this work, developed within the Meterglob Project [8], [9], effects on electrical safety, due to the sole LV neutral interconnections, have been analyzed for an urban area chosen as case study.

Simulations have been carried out with a software, written in Matlab, which passed experimental testing [10].

The Meterglob Project, cofounded by the Italian CCSE (Cassa Conguaglio per il Settore Elettrico), is investigating

various aspects related to GES, in particular on the contribution of extraneous conductive parts [10] and on the problem of periodic testing of ESs reliability [11].

The Project main purpose is to support Standardization Bodies in providing a more precise definition of GES as well as reliable procedures to assess and verify GES existence. In line with this target, suitable indexes for the evaluation of electrical safety degree of the area under investigation have been evaluated.

## II. THE MODEL

The system under investigation, which is hereafter referred to as “*Total System*”, is depicted in Fig. 3. It is a simplified representation of a typical urban scenario, potentially candidate to be defined as a portion of a GES.

In this section its mathematical model is reported, after a brief recall of the Maxwell Sub-Areas Method theoretical background.

A detailed description of all Total System components is presented in Section III.

### A. Grounding Systems Quasi-static Model

The study of a grounding electrode leaking a known quasi-static current can be accomplished applying the Maxwell Subareas Method (MaSM) [1], [12], [13].

The method is based on subdividing the leaking surface of the considered electrode in a suitable number  $n$  of smaller portions (subareas) having the following characteristics:

1. to be small enough to consider their surface leakage current density uniform;
2. to have a shape that allows to find an analytical expression of their produced field and potential when considered alone in an uniform, isotropic and indefinite medium;
3. to be at the same potential under fault conditions.

Statement 3 means that the voltage drop across the metal parts of the electrode is negligible, which is an amply justified hypothesis considering that the conductivity of electrodes parts is considerably greater than the soil one.

Fig. 1 shows an example of discretization of a simple cylindrical electrode embedded in a conductive homogeneous medium (the formulation extension to more complex geometries is immediate).

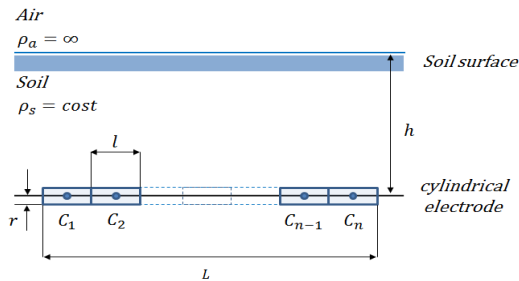


Fig. 1. Example of discretization of a simple cylindrical conductor

According to the MaSM, it has been subdivided in  $n$  cylindrical segments that satisfy condition 1 but still have a

length adequately greater than their diameter ( $2r/L \ll 1$ ), in order to assume the current field generated by each of them the same as that produced by uniform linear current sources laying on their longitudinal axes.

Every single subarea interferes with the others by means of *voltage coefficients*  $R_{ij}$  ( $i, j = 1, 2, \dots, n$ ) which represent the voltage produced by the generic inducing subarea  $j$  in the  $C_i$  barycentre of the induced subarea  $i$ , when  $j$  is leaking a unitary current. Being  $\rho$  the resistivity of the considered uniform medium, the analytical expression of the generic voltage coefficient is:

$$R_{ij} = \frac{\rho}{4\pi l_j} \ln \left[ \frac{x_i + \frac{l_j}{2} + \sqrt{\left(x_i + \frac{l_j}{2}\right)^2 + y_i^2 + z_i^2}}{x_i - \frac{l_j}{2} + \sqrt{\left(x_i - \frac{l_j}{2}\right)^2 + y_i^2 + z_i^2}} \right] \quad (1)$$

where  $l_j = L/n$  is the length of the inducing subarea and  $(x_i, y_i, z_i)$  are the coordinates of  $C_i$  on a local coordinate system centered on  $C_j$ .

The application of the MaSM method leads, for a single grounding electrode leaking a known current  $I_F$ , to the formulation of the following set of linear equations:

$$\begin{cases} R_{i1}I_1 + R_{i2}I_2 + \dots + R_{in}I_n = V_i = V_E & i = 1, 2, \dots, n \\ I_1 + I_2 + \dots + I_n = I_F \end{cases} \quad (2)$$

where  $V_i$  is the potential assumed by each subarea.

Equation set (2)-(3) solution gives the  $n$  subcurrents  $I_j$  leaked by each subarea and the Earth Potential Rise  $V_E$  of the considered electrode. The knowledge of subcurrent  $I_j$  allows the subsequent computation of the electric potential at any point of the soil surface.

The presence of air in half of the space domain, as well as the presence in the medium of layers with different resistivity (multi-layer soil model), is taken into account by means of the electrical images principle [1], [13].

Since each subarea is modelled as a uniform linear current source, it is obvious that a larger number of them results in a more adequate representation of the leakage current distribution along the electrode. Simulation reported in this paper have been repeated increasing  $n$  until negligible variations on ground surface potential values ( $< 1\%$ ) have been observed.

### B. Long Buried Conductors Quasi-static Model

As mentioned earlier, MaSM operates under the assumption of equipotentiality for grounding electrodes in quasi-static condition. This hypothesis leads to results whose degree of accuracy decreases as electrode size increases (e.g. long buried metal pipes, railways, etc.), being the voltage drop along them no more negligible [3].

It is possible to extend the applicability of MaSM to the case of a long buried conductor [14]. With reference to Fig. 2,

once subdivided the considered electrode in  $n$  subareas (trunks), each of them have to be considered as a separate grounding electrode, connected to the trunks immediately before and after by means of an admittance.

It is well known that, at industrial frequency, the interference phenomenon between bare conductors in contact with the soil can be described with satisfactory accuracy through purely resistive parameters [3]. Therefore, the admittance connecting consecutive trunks barycentres can be substituted by a conductance, whose value is given by the material and section of the conductor itself.

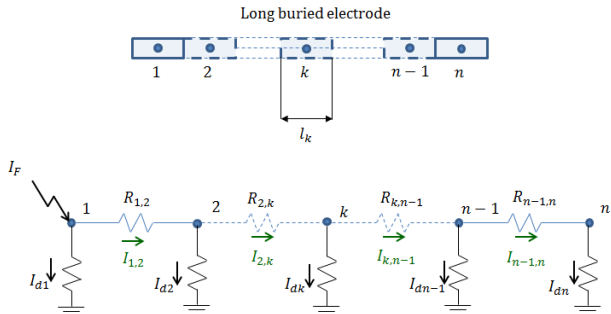


Fig. 2. Long bare buried electrode model

Currents flowing from a subarea to the neighbouring ones became new variables and must be determined, as well as the leakage current distribution along conductors.

### C. Total System Model

With reference to Fig. 3, *Total System* is composed by  $N_{MV} = 3$  MV/LV substation grounding electrodes connected each other and with  $N_r = 37$  grounding rods (neutral reinforcement groundings) through the LV distributed neutral conductor. In the area under investigation there are also  $N_{LV} = 33$  LV users grounding electrodes (TT system) and  $N_p = 3$  distinct pipelines (extraneous conductive parts).

Naming:

- $N_{gs} = N_{MV} + N_{LV}$ ;
- $n_{gstot} = \sum_{i=1}^{N_{gs}} n_{gs_i}$ , where  $n_{gs_i}$  is the subareas number of the  $i^{\text{th}}$  grounding system;
- $n_{rtot} = \sum_{i=1}^{N_r} n_{r_i}$ , where  $n_{r_i}$  is the subareas number of the  $i^{\text{th}}$  grounding rod;
- $n_{ptot} = \sum_{i=1}^{N_p} n_{p_i}$ , where  $n_{p_i}$  is the subareas number of the  $i^{\text{th}}$  pipeline;
- $n_{LV}$  the number of grounding electrodes connection sections realized by LV neutral conductor (ref. Fig. 3);

and being:

- $\mathbf{V}_{gs} = [V_{gs_1}, \dots, V_{gs_{N_{gs}}}]^T$  the unknown vector of EPRs assumed by the *Total System* square grounding electrodes;
- $\mathbf{V}_r = [V_{r_1}, \dots, V_{r_{N_r}}]^T$  the unknown vector of EPRs assumed by *Total System* grounding rods;
- $\mathbf{V}_{p_i} = [V_{p_{i,1}}, \dots, V_{p_{i,n_{p_i}}}]^T$  ( $i = 1, \dots, N_p$ ) the unknown vector of EPRs assumed by the  $n_{p_i}$  subareas of the  $i^{\text{th}}$  pipeline;

- $\mathbf{I}_{d_{gs_i}} = [I_{d_{gs_i,1}}, \dots, I_{d_{gs_i,n_{gs_i}}}]^T$  ( $i = 1, \dots, N_{gs}$ ) the unknown vector of subcurrents leaked by the  $i^{\text{th}}$  grounding electrode subareas;
- $\mathbf{I}_{d_{r_i}} = [I_{d_{r_i,1}}, \dots, I_{d_{r_i,n_{r_i}}}]^T$  ( $i = 1, \dots, N_r$ ) the unknown vector of subcurrents leaked by the  $i^{\text{th}}$  grounding rod subareas;
- $\mathbf{I}_{d_{p_i}} = [I_{d_{p_i,1}}, \dots, I_{d_{p_i,n_{p_i}}}]^T$  ( $i = 1, \dots, N_p$ ) the unknown vector of subcurrents leaked by the  $i^{\text{th}}$  pipeline subareas;
- $\mathbf{I}_{l_{LV}}$  the unknown vector of currents flowing through the  $n_{l_{LV}}$  connection sections between grounding electrodes;
- $\mathbf{I}_{l_{p_i}} = [I_{l_{p_i,1}}, \dots, I_{l_{p_i,n_{p_i}-1}}]^T$  ( $i = 1, \dots, N_p$ ) the unknown vector of currents flowing along the trunks of the  $i^{\text{th}}$  pipeline (ref. Figure 2);

the *Total System* model, which describes both the effects of mutual interferences due to current fields established in the ground and the presence of LV neutral connections, can be expressed as follows:

$$\begin{cases} \mathbf{U}\mathbf{x}_1 - \mathbf{R}\mathbf{x}_2 = \mathbf{0} & (9) \\ \mathbf{F}\mathbf{x}_2 + \mathbf{A}\mathbf{x}_3 = \mathbf{I}_{k_1} & (10) \\ \mathbf{M}\mathbf{x}_1 - \mathbf{x}_3 = \mathbf{0} & (11) \\ \mathbf{U}_s\mathbf{x}_2 = \mathbf{I}_{k_2} & (12) \end{cases}$$

where:

- $\mathbf{x}_1 = [\mathbf{V}_{gs}^T, \mathbf{V}_r^T, \mathbf{V}_{p_1}^T, \dots, \mathbf{V}_{p_{N_p}}^T]^T$ ;
- $\mathbf{x}_2 = [I_{d_{gs_1}}^T, \dots, I_{d_{gs_{N_{gs}}}}^T, I_{d_{r_1}}^T, \dots, I_{d_{r_{N_r}}}^T, I_{d_{p_1}}^T, \dots, I_{d_{p_{N_p}}}^T]^T$ ;
- $\mathbf{x}_3 = [I_{l_{LV}}^T, I_{l_{p_1}}^T, \dots, I_{l_{p_{N_p}}}^T]^T$ .
- $\mathbf{U} = \text{blockdiag}(\mathbf{U}_{gs_1}, \dots, \mathbf{U}_{gs_{N_{gs}}}, \mathbf{U}_{r_1}, \dots, \mathbf{U}_{r_{N_r}}, \mathbf{U}_p)$ , with  $\mathbf{U}_{gs_i} = [1, 1, \dots, 1]_{n_{gs_i}}^T$ ,  $\mathbf{U}_{r_i} = [1, 1, \dots, 1]_{n_{r_i}}^T$  and  $\mathbf{U}_p = \text{diag}([1, 1, \dots, 1]_{n_{p_{tot}}})$ ;
- $\mathbf{R}$  is the  $(n_{tot} \times n_{tot})$  matrix of voltage coefficients, with  $n_{tot} = n_{gstot} + n_{rtot} + n_{ptot}$ ;
- $\mathbf{F} = \text{blockdiag}(\mathbf{F}_{LV}, \mathbf{U}_p)$ , where  $\mathbf{F}_{LV}$  is equal to  $\mathbf{U}^T$  matrix curtailed of the  $N_{LV} + n_{p_{tot}}$  lines corresponding to grounding electrodes not connected to the LV neutral network;
- $\mathbf{A} = \text{blockdiag}(\mathbf{A}_{LV}, \mathbf{A}_{pT})$ , where  $\mathbf{A}_{LV}$  is the node-lines matrix of LV neutral network in Fig. 6 (excluding the remote earth node and its afferent lines) and  $\mathbf{A}_{pT} = \text{blockdiag}(\mathbf{A}_{p1}, \mathbf{A}_{p2}, \dots, \mathbf{A}_{p_{N_p}})$  where  $\mathbf{A}_{p_i}$  is the node-lines incidence matrix of the resistive network represented in Fig. 2, written, for each pipe, excluding the remote earth node and its afferent lines;
- $\mathbf{I}_{k_1}$  is the known vector of injected currents in LV neutral network nodes (it has  $N_{MV} + N_r$  elements);
- $\mathbf{I}_{k_2} = [I_{k_1}, \dots, I_{k_{N_{LV}}}, I_{k_{p_1}}^T, \dots, I_{k_{p_{N_p}}}^T]^T$ , where  $I_{k_i}$  is the known leaked current of  $i^{\text{th}}$  grounding electrode not

connected to Fig. 6 network (equal to zero for passive elements) and  $\mathbf{I}_{k_{P_i}}$  is the known vector of currents injected in subareas barycentres of the  $i^{\text{th}}$  pipeline (nodes of resistive network in Fig. 2);

- $\mathbf{U}_s$  is equal to  $\mathbf{U}^T$  matrix curtailed of lines corresponding to the  $N_{MV}$  grounding electrodes connected to the LV neutral network.

Matrix  $\mathbf{M}$  in (11), has the following structure:

$$\mathbf{M} = \begin{bmatrix} \mathbf{M}_1 \\ \mathbf{M}_2 \end{bmatrix} = \begin{bmatrix} \text{diag}(\mathbf{Y}_N)\mathbf{M}_{LV}^T & \mathbf{0} \\ \mathbf{0} & \text{diag}(\mathbf{G})\mathbf{A}_{PT}^T \end{bmatrix} \quad (13)$$

where:

- $\mathbf{Y}_n$  is the vector of neutral connections admittances;
- $\mathbf{G} = [\mathbf{G}_1, \dots, \mathbf{G}_{N_p}]^T$ , where  $\mathbf{G}_i$  is the vector of the conductances connecting the subareas barycentres of the  $i^{\text{th}}$  pipe (ref. Fig. 2);
- $\mathbf{M}_{LV}^T$  is the line-nodes matrix for the LV neutral network, written so that the size and the sort order of its columns are congruent with vector  $[\mathbf{V}_{gs}^T, \mathbf{V}_r^T]^T$ .

Since  $\mathbf{I}_{k_1}$ ,  $\mathbf{I}_{k_2}$  and  $\mathbf{Y}_N$  are, in general, complex quantities,  $\mathbf{x}_1$ ,  $\mathbf{x}_2$  and  $\mathbf{x}_3$  will be such also. By decomposing each of the (8)-(11) equations in their real and imaginary parts, all the relations needed for a unique direct solution are provided.

Due to the short connections, capacitive couplings between LV neutral conductor and remote earth, LV and MV lines are considered negligible and not taken into account. Inductive couplings between LV neutral conductor MV and LV lines are also neglected.

### III. CASE STUDY

Fig. 3 reports a plan view of the implemented case study, which is a simplified schematization of a real urban district portion in Torino, composed by six city blocks [10].

According to the requirements for the automatic disconnection of supply given by the international Standard IEC 60364-4 [15] for TT systems (the unique possible for LV users in Italy), each building of each block has an ES disjointed from the MV/LV substations' ones (red squares). The ESs of LV users, as well as the ESs of the MV/LV substations, are modeled with a square electrode, buried at 0.5 m under the soil level. The ES of the faulted MV/LV substation is the number 21.

The total fault current is  $I_F = 100^{<0.00} [A]$ , typical for a single line to ground fault in an Italian urban scenario (isolated neutral MV distribution system).

Blue lines represent three distinct water pipes, buried at 1 m (continuous line) and 1.3 m (dashed lines) depths.

The soil has been considered homogeneous, characterized by a resistivity of  $100\Omega\text{m}$ . Other geometrical and electrical details are reported in Table I.

The goal of the simulations is to evaluate how the presence of distributed LV neutral conductor and its "reinforcement grounding rods" modify both the electric potential profile (EPP) on the soil surface and the Transferred Potential (TP) on floating metallic parts.

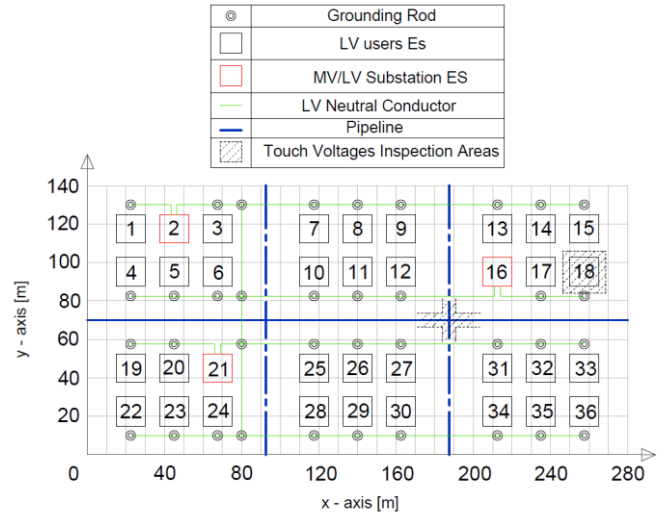


Fig. 3. Total System plan view

TABLE I  
GEOMETRICAL AND ELECTRICAL DETAILS OF THE CASE STUDY

Symbol	Quantity	Values
$L_{SE}$	Square electrodes length	15 m
$L_{GR}$	Grounding rod length	1.5 m
$L_{IALV}$	Length of square Inspection Area around the $j^{\text{th}}$ LV ES	22 m
$L_{IAP}$	Thickness of Inspection Area along pipes	7 m
$r_{SE}$	Square electrodes radius	4 mm
$r_{GR}$	Grounding rod radius	10 mm
$r_{WP}$	Water pipes radius	50 mm
$r_{LV}$	LV neutral conductor radius	3.99 mm
$\hat{z}_{LV}$	LV neutral conductor impedance	$0.393+j0.101 \Omega/\text{km}$
$g_{WP}$	Water pipes conductance	$1.555 \text{ S}\cdot\text{km}$

At this purpose two scenarios have been considered:

- Scenario 1: LV neutral connections and reinforcement grounding rods missing. Faulted MV/LV substation is called to disperse the entire fault current  $I_F$ ;
- Scenario 2: Total system as represented in Fig. 3.

For each scenario the fault current is kept constant.

To carry out the comparison, together with contour plots of the ground potential, three shape coefficients have been evaluated on the same portion of soil surface: Uniformity ( $C_U$ ), Valley Effect ( $C_{VE}$ ), Gradient ( $C_G$ ):

$$C_U = \frac{|V_{AV}|}{|V_{MAX}|} \quad (14)$$

$$C_{VE} = \frac{|V_{MIN}|}{|V_{AV}|} \quad (15)$$

$$C_G = \max(|\nabla V(x, y)|) \quad (16)$$

where:

- $V_{AV}$  = EPP Average Value;
- $V_{MAX}$  = EPP Maximum Value;
- $V_{MIN}$  = EPP Minimum Value;
- $\nabla V(x, y)$  = EPP gradient.

These coefficients allows global evaluation of EPP on the area under investigation.

In order to evaluate electrical safety degree for each scenario, the Maximum Touch Voltage coefficient ( $C_{MTV}$ ) has been introduced:

$$C_{MTV} = \frac{V_{TMax}}{|EPR_{21}|} = \frac{(|V_{TPj} - V_{IAminj}|)_{Max}}{|EPR_{21}|} \quad (17)$$

where:

- $EPR_{21}$  = EPR of MV/LV faulted substation ES;
- $V_{TPj}$  = TP on the  $j^{th}$  Floating Part;
- $V_{IAminj}$  = Minimum Voltage (with respect to remote earth) of the Soil in the Inspection Area around the  $j^{th}$  LV ES and along pipes (ref. Figure 3).

All introduced coefficients, except  $C_G$ , are independent from the product of soil resistivity and fault current. However, they all allow general validity observations.

Finally a computation of the maximum fault current for which users safety requirement:

$$V_{TMax} \leq 50V \quad (18)$$

is satisfied, has been performed for each scenario.

The utilized relation is the following:

$$|I_{50Vj}| = \frac{50}{C_{MTV} \cdot R_{eqj}} \quad j = 1,2 \quad (19)$$

where  $R_{eq}$  is defined as the ratio of  $|EPR_{21}|$  to total fault current  $I_F$  magnitude.

#### A. Simulation results

Table II reports, for each simulated scenario, the MV/LV substations EPRs and all the quantities presented in the previous section. EPRs' phase angles are expressed in degree. Scenario 2 reports a drastic reduction of faulted substation EPR (about 77%). This is due to the repartition of fault current between all other grounding electrodes connected through LV neutral conductor. As reported in Fig. 6, faulted substation is in fact called on to disperse less than 20% of the total fault current.

The great increase of uniformity coefficient  $C_U$  from scenario 1 to scenario 2 is obviously due to the above mentioned reduction of  $EPR_{21}$ , but also to the rise of EPP in areas far from the faulted substation (thanks to currents leaked by all auxiliary electrodes).

Same considerations can be made about the smaller increase of  $C_{VE}$ .

Particularly significant is the reduction of the maximum EPP gradient magnitude (about 80%), which is a relevant

index of the equipotentiality degree reached by the area under investigation.

TABLE II  
EPR AND SHAPE COEFFICIENTS FOR THE SIMULATED SCENARIOS

Quantity	Scenario N°	
	1	2
$EPR_{21}^{\circ}$ [V°degree]	19.6 $\angle$ 0.0	84.5 $\angle$ -0.1
$EPR_{16}^{\circ}$ [V°degree]	13.6 $\angle$ 0.0	84.1 $\angle$ -0.2
$EPR_{21}$ [V°degree]	379.2 $\angle$ 0.0	86.2 $\angle$ 0.2
$C_U$	0.091	0.347
$C_{VE}$	0.330	0.481
$C_G$ [V/m]	70.327	13.184

equal to transferred potential for scenario 1

Table III reports the shape coefficients recalculated for a single block of the urban area, the one containing the faulted substation.

TABLE III  
SHAPE COEFFICIENTS FOR A SINGLE BLOCK

Quantity	Scenario N°	
	1	2
$C_U$	0.214	0.395
$C_{VE}$	0.325	0.500
$C_G$ [V/m]	70.327	13.184

Uniformity coefficient  $C_U$ , calculated for the reduced area, is obviously different from that calculated before. The maximum voltage is in fact the same, while the average is greater (low far-away potentials are not considered). As expected, the  $C_U$  increase is smaller for scenario 2.

Coefficient  $C_{VE}$  remains the same, being both average and minimum values increased. The unchanged value of  $C_G$  states that, for each scenario, maximum step voltages are located in proximity of the faulted substation.

Table IV reports quantities introduced to evaluate TPs on floating parts and touch voltages.

TABLE IV  
EVALUATION OF TRANSFERRED POTENTIAL

Quantity	Scenario N°	
	1	2
$V_{TPMax}$ [%]	18.70 (on ES 24)	35.01 (on ES 5)
$C_{MTV}$	0.0757 (I. Area around Es 20)	0.0790 (I. Area around Es 1)
$ I_{50V} $ [A]	173.6	733

Quantity  $V_{TPMax}$  is the magnitude, expressed in percentage of  $EPR_{21}$ , of the maximum transferred potential to floating parts. It is nearly doubled in scenario 2, as a consequence of the diffused presence of active electrodes around floating parts (higher couplings due to the current field in the soil). Coefficient  $C_{MTV}$  remains practically the same. This means that also the ratio of minimum soil potential (even if evaluated for different inspection areas) to the EPR of faulted station has increased. With reference to absolute touch voltages, this

means a general improvement, from a scenario to another, of the electrical safety of the area in question.

Current  $I_{50V}$  magnitude can be taken as an indicator of the degree of electrical safety, with reference to LV users. Results reported in Table IV confirms that scenario 2 is four times safer than scenario 1.

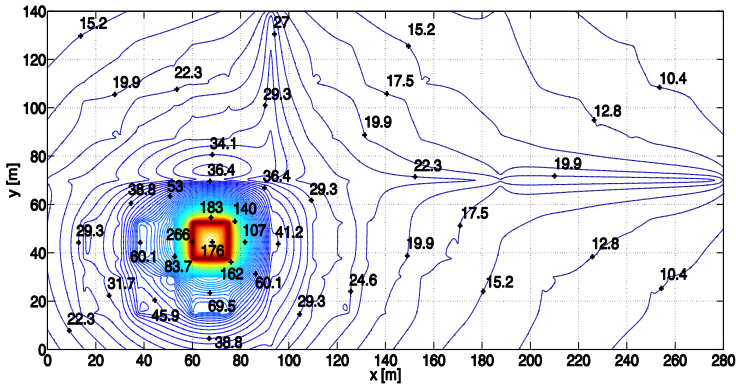


Fig. 4. EPP contour plot (in volt) for scenario 1

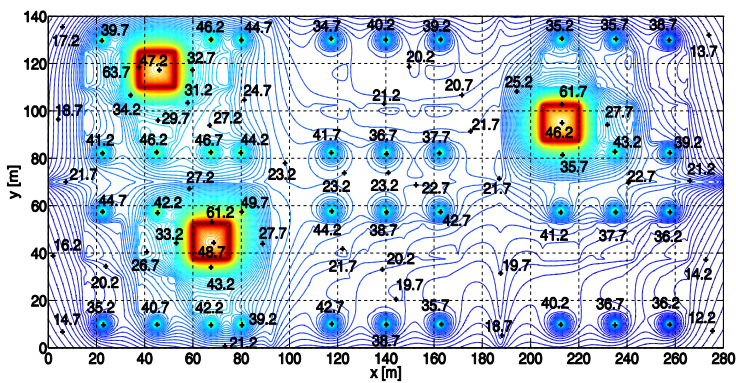


Fig. 5. EPP contour plot (in volt) for scenario 2

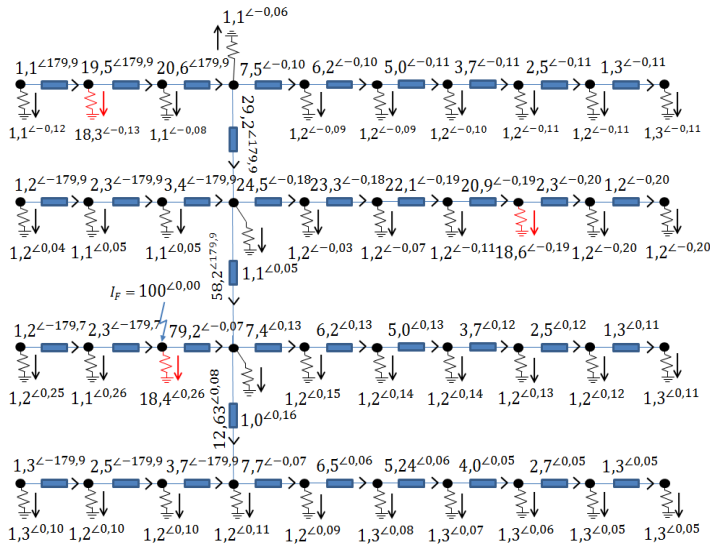


Fig. 6. Scenario 2: LV neutral network current flows (magnitude in ampere, phase angle in degree). Red resistances correspond to MV/LV substations ES.

## IV. CONCLUSIONS

This work analyzes the role, in electrical safety, of the LV distributive scheme adopted in Italy for high load areas.

At this purpose the effect of the sole presence of LV neutral interconnections between substations ESs, along with LV neutral reinforcement groundings, have been evaluated in case of a MV single line to ground fault.

With reference to the worst case scenario (the faulted substation called on to disperse the entire fault current), calculated indexes show significant reductions of EPRs, EPP gradient and touch voltages. This is because described LV distributive scheme realizes, although in a small area, all the concepts behind the GES definition provided by Standards: *Interconnection*, *Proximity* and *Quasi-equipotentiality*. For this reason it surely improves GES efficiency in that area and its realization should be recommended.

## REFERENCES

- [1] P. Buccheri, V. Cataliotti, G. Morana, "Calcolo automatico di impianti di terra comunque complessi in terreni omogenei e non omogenei a doppio strato," *Energ. Elettr.*, pp. 293-304, 1977.
- [2] J. M. Nahman, "Analysis of interconnected earthing systems", *Archiv für Elektrotechnik*, No. 63, pp. 261-265, 1981.
- [3] G. Ala, P. Buccheri, A. Campoccia, "Interferenza tra elettrodi interrati rettilinei a caduta di tensione longitudinale non trascurabile. Analisi dell'accoppiamento conduttivo," *Energ. Elettr.*, No. 10, pp. 405-413, 1992.
- [4] *Power installations exceeding 1kV a.c., Part 1: Common rules*. EN 61936-1, 2011.
- [5] *Earthing of power installations exceeding 1 kV a.c.* EN 50522, 2011.
- [6] P. Colella, et al., "Current and Voltage Behaviour During a Fault in a HV/MV System: Methods and Measurements," in *Proceedings of the 15th IEEE International Conference on Environment and Electrical Engineering*. IEEE, 2015, submitted for publication.
- [7] M. Di Silvestre, et al., "The global grounding system: Definitions and guidelines," in *Proceedings of the 15th IEEE International Conference on Environment and Electrical Engineering*. IEEE, 2015, submitted for publication.
- [8] R. Napoli, et al., "The Meterglob Project: Impact of fault current division and of extraneous conductive parts on Global Earthing Systems," in *Proceedings of International Conference on Grounding and Earthing & 6th International Conference on Lightning Physics and Effects*, Manaus, Brazil, 2014.
- [9] G. Cafaro, P. Montegiglio, F. Torelli, "The Meterglob Project," 1<sup>th</sup> SCORE@POLIBA2014, 3-5 December, Bari, Italy, 2014.
- [10] E. Pons, et al., "Global Earthing Systems: Can buried metallic structures significantly modify the ground potential profile?," *IEEE Trans. on Industry Applications*, to be published
- [11] L. Martirano, et al., "A Practical Method to Test HV/MV Substation Grounding Systems," in *Proceedings of the 15th IEEE International Conference on Environment and Electrical Engineering*. IEEE, 2015, submitted for publication
- [12] F. Freschi, M. Mitolo, and M. Tartaglia, "An Effective Semianalytical Method for Simulating Grounding Grids," *Industry Applications, IEEE Transactions on*, vol. 49, no. 1, pp. 256-263, 2013.
- [13] V. Cataliotti and A. Campoccia, *Impianti di terra*. TNE, 2013.
- [14] M. Bronzini, G. Delvecchio, N. Mitaritonna, P. Pugliese, M. Sylos Labini, "A method for studying the current field generated by interconnected grounding systems," 21<sup>th</sup> ISEF International Symposium on Electromagnetic Field in Electrical Engineering, Maribor, Slovenia, 2003.
- [15] *Low-voltage electrical installations - Part 4-41: Protection for safety - Protection against electric shock*. IEC 60364-4, 2005.