

Shannon, Tsallis and Kaniadakis entropies in bi-level image thresholding

Original

Shannon, Tsallis and Kaniadakis entropies in bi-level image thresholding / Sparavigna, Amelia Carolina. - In: INTERNATIONAL JOURNAL OF SCIENCES. - ISSN 2305-3925. - STAMPA. - 4:2(2015), pp. 35-43. [10.18483/ijSci.626]

Availability:

This version is available at: 11583/2592189 since: 2015-09-03T06:50:33Z

Publisher:

England: Alkhaer Publications

Published

DOI:10.18483/ijSci.626

Terms of use:

This article is made available under terms and conditions as specified in the corresponding bibliographic description in the repository

Publisher copyright

(Article begins on next page)

Shannon, Tsallis and Kaniadakis Entropies in Bi-level Image Thresholding

Amelia Carolina Sparavigna¹

¹Department of Applied Science and Technology, Politecnico di Torino, Italy

Abstract: The maximum entropy principle is often used for bi-level or multi-level thresholding of images. For this purpose, some methods are available based on Shannon and Tsallis entropies. In this paper, we discuss them and propose a method based on Kaniadakis entropy.

Keywords: Kaniadakis Entropy, Image Processing, Image Segmentation, Image Thresholding, Texture Transitions

1. Introduction

The concept of entropy was born in thermodynamics and statistical mechanics. Shannon, in 1948, formulated it for the theory of information, obtaining the “information entropy”. In an intuitive understanding of it [1], this entropy relates to the amount of uncertainty about an event associated with a given probability distribution.

In image processing, Shannon entropy was the first being used, but today, it is the Tsallis formulation of entropy that seems to be preferred [2-4]. For the elaboration of images, the entropy uses their histograms. For instance, in the bi-level segmentation of a gray-level image, a threshold is determined which separates the gray tones in two systems A and B , maximizing the entropy. Considering A and B independent, the entropy $S(A \cup B)$ is the generalized sum $S^A \oplus S^B$, where S^A, S^B are the corresponding entropies of the systems. In this paper, we will discuss the use of Shannon and Tsallis entropies for image thresholding. Among the other formulations of entropy [5], here we propose the thresholding using Kaniadakis entropy, which is a quite attractive entropy based on the relativistic formulation of the statistical mechanics [6,7].

Both Tsallis and Kaniadakis entropies have an entropic index. If these entropies are used for a bi-level thresholding of an image, the bi-level black and white image that we obtain depends on the value of the optimize threshold, which is depending on the entropic index. Here we compare the results we can obtain with Kaniadakis and Tsallis entropies, proposing a

“measure” on the output image. In this “measure”, we evaluate the number of edge pixels that separate black and white regions. After experiments on some images, we can conclude that the two entropies compare positively. We have the same results, but Kaniadakis entropy has the intuitive advantage of recovering the Shannon result when its entropic index goes to zero.

2. Images and information entropy

Before proposing the use of Kaniadakis entropy for image thresholding, let us shortly illustrate the classic method using the Shannon entropy applied for segmentation. Let us consider an image which as N elements of luminance. These elements can have g gray tones, labelled $\{x_1, x_2, \dots, x_n\}$, for instance $\{0, 1, 2, \dots, g\}$, with $g = 255$. Let us suppose that each tone x_i is chosen N_i times. The frequency is $f_i = N_i / N$. Accordingly, we have a set $F = \{f_1, f_2, \dots, f_n\}$, that we call “the scene”. Any given scene has a certain multiplicity W_F :

$$W_F = \frac{N!}{(Nf_1)! \dots (Nf_n)!} \quad (1)$$

Equation (1) gives the number of ways in which we can generate the same scene [8]. Let us consider that each of the generated copy of the scene has the same probability, which is equal to $1/W_F$. In the case N is large, we can apply the Stirling approximation:

$$\begin{aligned} \frac{1}{N} \ln W_F &= \frac{1}{N} \ln \left(\frac{N!}{(Nf_1)! \dots (Nf_n)!} \right) = \frac{1}{N} \{ \ln N! - [\ln(Nf_1)! + \dots + \ln(Nf_n)!] \} \\ &= \frac{1}{N} N \ln N - N - \frac{1}{N} [Nf_1 \ln Nf_1 + Nf_1 + \dots + Nf_n \ln Nf_n + Nf_n] \\ &= \frac{1}{N} N \ln N - \frac{1}{N} [Nf_1 \ln N + Nf_1 \ln f_1 + \dots + Nf_n \ln N + Nf_n \ln f_n] \\ &= -[f_1 \ln f_1 + \dots + f_n \ln f_n] = -\sum_{i=1}^n f_i \ln f_i \end{aligned} \tag{2}$$

In (2), we use $\sum_{i=1}^n f_i = 1$. This is the Shannon entropy; it is depending on “objective” frequencies f_i instead of “subjective” probabilities p_i [8].

3. Thresholding

For a bi-level thresholding of an image, let us follow the approach of reference 4. Let us consider two independent systems A and B , for which the joint probability is $p(A, B) = p(A)p(B)$. The entropy $S(A \cup B)$ is $S^A \oplus S^B$. The systems can be given as in the following [4]. A contains elements with g gray tones, labelled $\{x_1, x_2, \dots, x_t\}$, for instance $\{0, 1, 2, \dots, t\}$, that is, with gray tone below or equal a given threshold t . Let us suppose that each tone x_i is chosen $N_{A,i}$ times, according to frequency: $f_{A,i} = f_i N / N_A$. We

have: $N_A = \sum_{i=1}^t Nf_i = N \sum_{i=1}^t f_i = NP_A$

Therefore: $f_{A,i} = Nf_i / (NP_A) = f_i / P_A$

Moreover, $\sum_{i=1}^t f_{A,i} = 1$. In the same manner, B

contains elements $\{x_{t+1}, x_2, \dots, x_n\}$, that is, $\{t+1, t+2, \dots, g\}$. Let us suppose that each tone x_i is chosen $N_{B,i}$ times, according to frequency:

$f_{B,i} = f_i N / N_B$. Again:

$N_B = \sum_{i=t+1}^g Nf_i = N \sum_{i=t+1}^g f_i = NP_B$.

The entropy S^A is:

$$S^A = \frac{1}{N_A} \ln W_A = \frac{1}{N_A} \ln \left(\frac{N_A!}{(N_{A,1})! \dots (N_{A,t})!} \right) \tag{3}$$

Then, using Stirling again:

$$S^A = -\sum_{i=1}^t f_{A,i} \ln f_{A,i} = -\sum_{i=1}^t \frac{f_i}{P_A} \ln \frac{f_i}{P_A} \tag{4}$$

For B:

$$S^B = \frac{1}{N_B} \ln W_B = \frac{1}{N_B} \ln \left(\frac{N_B!}{(N_{B,t+1})! \dots (N_{B,g})!} \right) = -\sum_{i=t+1}^g \frac{f_i}{P_B} \ln \frac{f_i}{P_B} \tag{5}$$

The abovementioned frequencies for a gray-level image can be given by the normalized histogram.

To find the best value of threshold t , we have to maximize $S^A + S^B$ [4].

3. Bi-level thresholding with Tsallis and Kaniadakis entropies

Let us remember that the Tsallis entropy is given by [9,10]:

$$S_q = \frac{1}{q-1} \left\{ 1 - \sum_i p_i^q \right\} = \frac{1}{q-1} \left\{ \sum_i p_i (1 - p_i^{q-1}) \right\} \tag{6}$$

In fact, the Tsallis entropy is defined, using the q -logarithm, as:

$$S_q = -\sum_i p_i^q \ln_q p_i = -\sum_i p_i^q \frac{p_i^{1-q} - 1}{1-q} = -\sum_i \frac{p_i - p_i^q}{1-q} = \frac{1}{q-1} \left\{ 1 - \sum_i p_i^q \right\} \quad (7)$$

Let us assume a bi-level threshold t for the gray levels. In [3], two systems had been introduced, A and B , and their probability distributions. Let us assume the properties of A and B as in the previous section. The Tsallis entropies, one for each distribution, are given by:

$$S_q^A(t) = \frac{1}{q-1} \left\{ 1 - \sum_{i=1}^t \left(\frac{f_i}{P_A} \right)^q \right\} \quad (8)$$

$$S_q^B(t) = \frac{1}{q-1} \left\{ 1 - \sum_{i=t+1}^g \left(\frac{f_i}{P_B} \right)^q \right\} \quad (9)$$

Taking the limit $q \rightarrow 1$, Tsallis entropy gives Shannon's entropy. The total Tsallis entropy is given by the generalized sum:

$$S_q(t) = S_q^A(t) + S_q^B(t) + (1-q) S_q^A(t) S_q^B(t) \quad (10)$$

In fact, in a generalization of statistical mechanics, a deformed entropy had been proposed, the Kaniadakis entropy, also known as κ -entropy [6,7]:

$$S_\kappa = -\sum_i p_i \ln_{\{\kappa\}}(p_i) \quad (11)$$

This entropy has the remarkable property of having the same behavior of Shannon entropy, that is:

$$S_\kappa = \sum_i p_i \ln_{\{\kappa\}} \left(\frac{1}{p_i} \right) \quad (12)$$

In it, we have the generalized version of the logarithm [7]:

$$S_\kappa = -\frac{1}{2\kappa} \left\{ \sum_i \left((p_i)^{1+\kappa} - (p_i)^{1-\kappa} \right) \right\} \quad (13)$$

We can apply this entropy to the bi-level thresholding. Let us call the threshold τ . Generalizing (3) and (5), κ -entropies are:

$$S_\kappa^A(\tau) = -\frac{1}{2\kappa} \left\{ \sum_{i=1}^{\tau} \left(\left(\frac{f_i}{P_A} \right)^{1+\kappa} - \left(\frac{f_i}{P_A} \right)^{1-\kappa} \right) \right\} \quad (14)$$

$$S_\kappa^B(\tau) = -\frac{1}{2\kappa} \left\{ \sum_{i=\tau+1}^g \left(\left(\frac{f_i}{P_B} \right)^{1+\kappa} - \left(\frac{f_i}{P_B} \right)^{1-\kappa} \right) \right\} \quad (15)$$

In the limit $\kappa \rightarrow 0$, Kaniadakis entropy becomes Shannon entropy.

Let us consider the composition of systems A and B , but in the framework of this deformed statistics. According to [11], the generalized sum:

$$S_\kappa(\tau) = S_\kappa^A(\tau) \mathfrak{S}_\kappa^B(\tau) + S_\kappa^B(\tau) \mathfrak{S}_\kappa^A(\tau) \quad (16)$$

In (16) we have:

$$\mathfrak{S}_\kappa^A(\tau) = \frac{1}{2} \left\{ \sum_{i=1}^{\tau} \left(\left(\frac{f_i}{P_A} \right)^{1+\kappa} + \left(\frac{f_i}{P_A} \right)^{1-\kappa} \right) \right\} \quad (17)$$

$$\mathfrak{S}_\kappa^B(\tau) = \frac{1}{2} \left\{ \sum_{i=\tau+1}^g \left(\left(\frac{f_i}{P_B} \right)^{1+\kappa} + \left(\frac{f_i}{P_B} \right)^{1-\kappa} \right) \right\} \quad (18)$$

When entropies, (10) or (16), are maximized, the corresponding gray level τ is considered the optimum threshold value. In the gray bi-level thresholding, we have a resulting processed image, which is a black and white image. The output image is created as in the following: if pixels have a gray tone larger than the threshold, they become white. If pixels have a lower value, they become black.

4. More deeply in the limit of Kaniadakis entropy

In fact, we have that:

$$\mathfrak{S}_\kappa = \frac{1}{2} \left\{ \sum_i p_i^{1+\kappa} + \sum_i p_i^{1-\kappa} \right\} = \kappa S_\kappa + \sum_i p_i^{1+\kappa} \quad (19)$$

That is:

$$\begin{aligned} \mathfrak{S}_\kappa &= \frac{1}{2} \left\{ \sum_i p_i^{1+\kappa} + \sum_i p_i^{1-\kappa} \right\} = -\kappa \frac{1}{2\kappa} \left\{ \sum_i p_i^{1+\kappa} - \sum_i p_i^{1-\kappa} \right\} + \sum_i p_i^{1+\kappa} \\ &= -\frac{1}{2} \sum_i p_i^{1+\kappa} + \frac{1}{2} \sum_i p_i^{1-\kappa} + \sum_i p_i^{1+\kappa} = \mathfrak{S}_\kappa \end{aligned}$$

Therefore:

$$\begin{aligned} S_\kappa &= S_\kappa^A \mathfrak{S}_\kappa^B + S_\kappa^B \mathfrak{S}_\kappa^A \\ &= S_\kappa^A \left(\kappa S_\kappa^B + \sum_{i=\tau+1}^g \left(\frac{f_i}{P_B} \right)^{1+\kappa} \right) + S_\kappa^B \left(\kappa S_\kappa^A + \sum_{i=1}^\tau \left(\frac{f_i}{P_A} \right)^{1+\kappa} \right) \quad (20) \end{aligned}$$

$$S_\kappa = 2\kappa S_\kappa^A S_\kappa^B + S_\kappa^A \sum_{i=\tau+1}^g \left(\frac{f_i}{P_B} \right)^{1+\kappa} + S_\kappa^B \sum_{i=1}^\tau \left(\frac{f_i}{P_A} \right)^{1+\kappa} \quad (21)$$

In the limit $\kappa \rightarrow 0$, Kaniadakis entropy becomes Shannon entropy, and therefore we must have the normal additivity. And in fact:

$$S_\kappa = S^A \sum_{i=\tau+1}^g \frac{f_i}{P_B} + S^B \sum_{i=1}^\tau \frac{f_i}{P_A} = S^A + S^B \quad (22)$$

S^A, S^B are the Shannon entropies. In the limit $\sum_{i=1}^\tau \left(\frac{f_i}{P_A} \right)^{1+\kappa}$ becomes $\sum_{i=1}^\tau \frac{f_i}{P_A} = \frac{1}{P_A} \sum_{i=1}^\tau f_i = \frac{P_A}{P_A} = 1$. We have the same for B .

4. Discussion

Let us note that, both Tsallis and Kaniadakis entropies have entropic indices that can give different results when applied to the sample. To choose among these several results and define an output image, we propose a “measure” of the bi-level image, given by the number of edge pixels between black and white regions. We imagine that, increasing the number of edge pixels, we are able to see more textures in the black and white image. Of course, other measures can be defined.

Figures 1-5 give images, bi-level images and the corresponding Tables, which are displaying the results of maximizing Tsallis and Kaniadakis entropies, according to (10) and (16). In experiments, their entropic indices are spanning interval (0,1). Let us avoid, in the calculations, the values 0 and 1.

Of the five examples proposed in the corresponding figures, we have that the results we obtain using the

Kaniadakis entropy are the same of that we obtain with Tsallis entropy, within an uncertainty of one gray-tone. Let us also note that, in three of the examples, the best result that we obtain, according to the proposed “measure”, is the same of that we can have from the Shannon approach. However, in the case of the two examples (Figs. 4 and 5), where the method is applied to microscopic images of blood, the best result is different from that given by the Shannon limit. Moreover, in the case of Figure 5, we have the evidence of an “image transition” (see Ref.12 for more details).

Besides the fact that the Kaniadakis entropy possesses a formalism closer to that of Shannon entropy, a good reason for preferring κ -entropy is that it has the more intuitive behavior of an entropy recovering the Shannon result, when its entropic index is going to zero. Another relevant advantage of Kaniadakis entropy is in the evaluation of multi-level thresholding

of images. This will be discussed in a future paper.

References

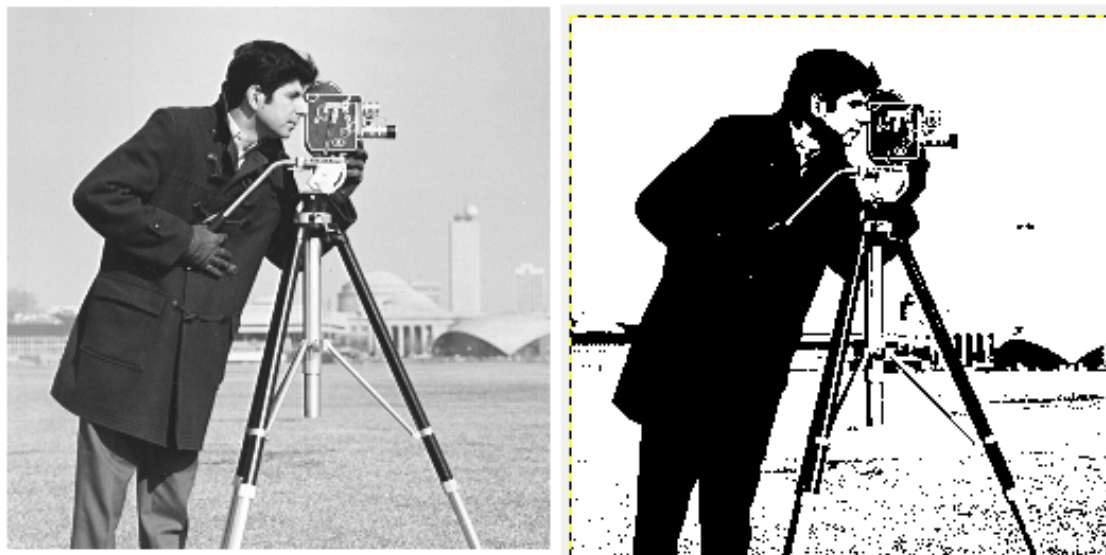
1. Sonka, M.; Hlavac, V.; Boyle, R. Image processing, analysis, and machine vision, Cengage Learning, 2014. <http://dx.doi.org/10.1007/978-1-4899-3216-7>
2. Gull, S.F.; Skilling, J. Maximum entropy method in image processing. Communications, Radar and Signal Processing, IEE Proceedings F, 1984, 131, 646-659. <http://dx.doi.org/10.1049/ip-f-1.1984.0099>
3. Portes de Albuquerque, M.; Esquef, I.A.; Gesualdi Mello, A.R.; Portes de Albuquerque, M. Image thresholding using Tsallis entropy. Pattern Recognition Letters, 2004, 25, 1059-1065. <http://dx.doi.org/10.1016/j.patrec.2004.03.003>
4. Kapur, J.N.; Sahoo, P.K.; Wong, A.K.C. A new method for gray-level picture thresholding using the entropy of the histogram. Comput. Vision Graphics Image Process., 1985, 29, 273-285. [http://dx.doi.org/10.1016/0734-189x\(85\)90125-2](http://dx.doi.org/10.1016/0734-189x(85)90125-2)
5. Beck, C. Generalised information and entropy measures in physics, Contemporary Physics, 2009, 50, 495-510. <http://dx.doi.org/10.1080/00107510902823517>
6. Kaniadakis, G. Statistical mechanics in the context of special relativity, Phys. Rev. E, 2002, 66, 056125. <http://dx.doi.org/10.1103/physreve.66.056125>
7. Kaniadakis, G. Theoretical foundations and mathematical formalism of the power-law tailed statistical distributions, Entropy, 2013, 15, 3983-4010. <http://dx.doi.org/10.3390/e15103983>
8. Jaynes, E.T. Where do we go from here?, in C. Ray Smith and W.T. Grandy, Jr. (eds.), Maximum-entropy and Bayesian methods in inverse problems, 21-58, 1985, D. Reidel Publishing Company. http://dx.doi.org/10.1007/978-94-017-2221-6_2
9. Tsallis, C. Introduction to nonextensive statistical mechanics, 2009, Springer. http://dx.doi.org/10.1007/978-0-387-85359-8_6
10. Yamano, T. Some properties of q-logarithm and q-exponential functions in Tsallis statistics, Physica A 2002, 305, 486-496. [http://dx.doi.org/10.1016/s0378-4371\(01\)00567-2](http://dx.doi.org/10.1016/s0378-4371(01)00567-2)
11. Scarfone, A.M.; Wada, T. Thermodynamic equilibrium and its stability for microcanonical systems described by the Sharma-Taneja-Mittal entropy, 2005, Phys. Rev. E 72, 026123. <http://dx.doi.org/10.1103/physreve.72.026123>
12. Sparavigna, A.C. Gray-level image transitions driven by Tsallis entropic index, International Journal of Sciences 2015, 4, 16-25.



t=120

Entropic indices (q,κ)	Threshold (T-entropy)	Number of edge pixels	Threshold (κ-entropy)	Number of edge pixels
0.01	119	7807	120	7901
0.05	119	7807	120	7901
0.1	119	7901	120	7901
0.15	119	7901	120	7901
0.2	120	7901	120	7901
0.4	120	7901	120	7901
0.6	120	7901	120	7901
0.8	120	7901	120	7901
0.9	120	7901	119	7807
0.99	120	7901	119	7807

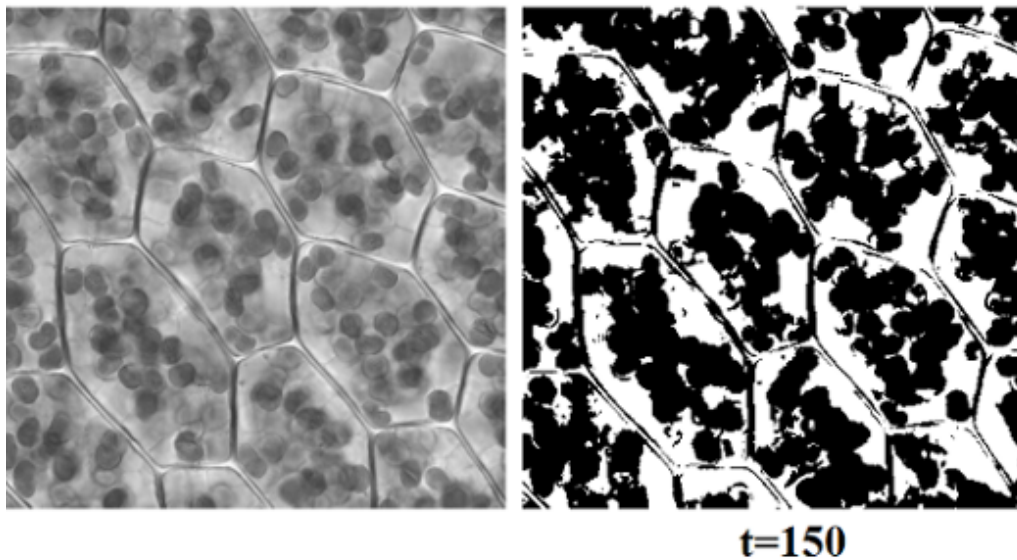
Fig.1. Lena and the corresponding bi-level black and white image, for threshold 120. The table shows the optimized thresholds obtained using Tsallis (T-entropy) and Kaniadakis (κ-entropy) entropies, for several values of entropic indices. In the limit $q \rightarrow 1$, Tsallis entropy provides Shannon result, and for $\kappa \rightarrow 0$, Kaniadakis entropy becomes Shannon entropy. When the image is segmented in a bi-level black and white image according to the given threshold, the number of edge pixels between black and white regions are calculated. If we assume the “best” bi-level image being that having the largest number of edge pixels, the threshold to choose is 120 from T-entropy and κ-entropy.



t=176

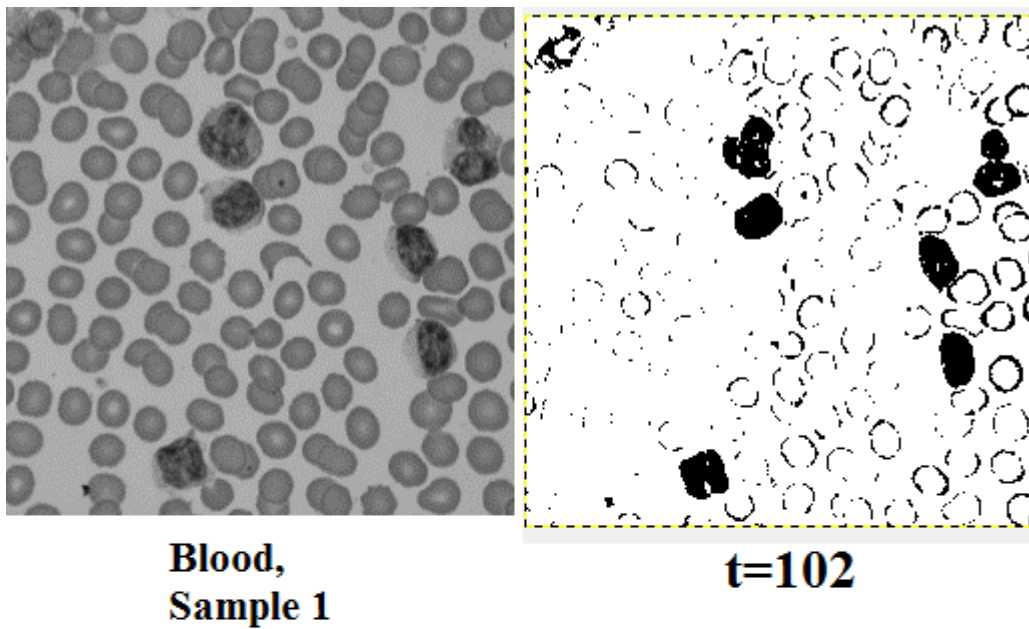
Entropic indices (κ, q)	Threshold (T-entropy)	Number of edge pixels	Threshold (κ -entropy)	Number of edge pixels
0.01	138	4559	176	7186
0.05	140	4557	175	6938
0.1	141	4579	175	6938
0.15	143	4596	174	6734
0.2	145	4570	171	6176
0.3	148	4628	168	5716
0.4	154	4695	165	5323
0.5	160	4895	160	4895
0.6	165	5323	154	4695
0.7	167	5570	148	4628
0.8	171	6176	145	4570
0.9	175	6938	141	4579
0.99	175	6938	138	4559

Fig.2. Cameraman and the corresponding bi-level black and white image, for threshold 176. The table shows the optimized thresholds obtained using T-entropy and κ -entropy, for several values of entropic indices. Note again, that in the limit $q \rightarrow 1$, Tsallis entropy provides Shannon result, and for $\kappa \rightarrow 0$, Kaniadakis entropy becomes Shannon entropy. As we did for Lena, the image is segmented in a bi-level black and white image according to the given threshold; the number of edge pixels between black and white regions are calculated. If we assume the “best” bi-level image being that having the largest number of edge pixels, the threshold to choose is 176 from κ -entropy. Note that the best result is corresponding to the Shannon limit



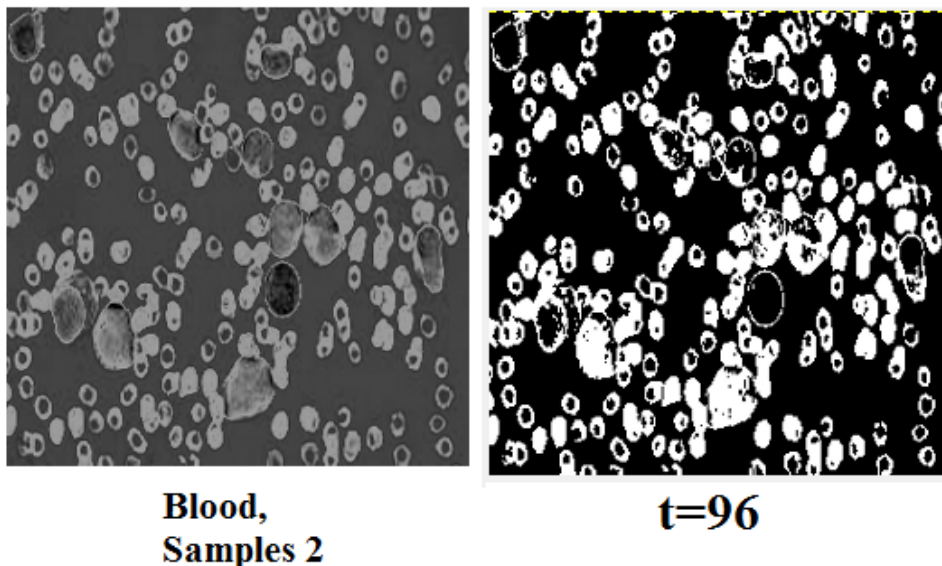
Entropic indices (κ, q)	Threshold (T-entropy)	Number of edge pixels	Threshold (κ -entropy)	Number of edge pixels
0.01	154	20663	150	21461
0.05	154	20663	150	21461
0.1	155	20450	150	21461
0.15	155	20450	151	21277
0.2	154	20663	151	21277
0.3	154	20663	151	21277
0.4	154	20663	153	20903
0.5	153	20903	153	20903
0.6	153	20903	154	20663
0.7	151	21277	154	20663
0.8	151	21277	154	20663
0.9	151	21277	155	20450
0.99	150	21461	154	20663

Fig.3. Microscopic image of cells (courtesy Kristian Peters, Wikipedia) in gray-level rendering and the corresponding bi-level image. The table is showing the optimized thresholds obtained using T-entropy and κ -entropy. As we did for Lena and Cameraman, the image is segmented in a bi-level black and white image according to the given threshold; the number of edge pixels between black and white regions are calculated. If we assume the “best” bi-level image being that having the largest number of edge pixels, the threshold to choose is 150 from T- and κ -entropies. Again, the best result corresponds to the Shannon limit.



Entropic indices (κ, q)	Threshold (T-entropy)	Number of edge pixels	Threshold (κ -entropy)	Number of edge pixels
0.01	102	7215	93	1525
0.05	98	3253	93	1525
0.1	96	2281	94	1735
0.2	95	1966	94	1735
0.3	95	1966	95	1966
0.5	95	1966	95	1966
0.7	95	1966	95	1966
0.8	94	1735	95	1966
0.9	94	1735	96	2281
0.99	93	1525	102	7215

Fig.4. Microscopic image of blood cells (courtesy Wikipedia) and the table showing the optimized thresholds obtained using T-entropy and κ -entropy. If we assume the “best” bi-level image being that having the largest number of edge pixels, the threshold to choose is 102 from T- and κ -entropies. Note that, in this case, the best result is quite different from the Shannon limit. It is at the opposite end of the interval spanned by the entropic index.



Entropic indices (κ, q)	Threshold (T-entropy)	Number of pixels at edges	Threshold (κ -entropy)	Number of pixels at edges
0.01	90	13561	49	858
0.05	90	13561	49	858
0.1	91	13603	49	858
0.2	91	13603	49	858
0.3	96	13691	49	858
0.4	96	13691	49	858
0.5	87	13530	87	13530
0.55	49	858	87	13530
0.6	49	858	96	13691
0.7	49	858	96	13691
0.8	49	858	91	13603
0.9	49	858	91	13603
0.99	49	858	90	13561

Fig.5. Another microscopic image of blood cells (courtesy Wikipedia) and the table showing the optimized thresholds obtained using T-entropy and κ -entropy. If we assume the “best” bi-level image being that having the largest number of edge pixels, the threshold to choose is 96 from T- and κ -entropies. Note that, in this case again, the best result is different from the Shannon limit. It is about the values 0.6 and 0.7 of the κ entropic index, and about 0.3 and 0.4 of the q index. In fact, here we are observing, as the index is spanning the interval (0,1), an “image transition”, which is accompanied by a texture transition in it [12].