

POLITECNICO DI TORINO  
Repository ISTITUZIONALE

Città Universitaria della Conciliazione a Grugliasco (TO)

*Original*

Città Universitaria della Conciliazione a Grugliasco (TO) / Crotti, Massimo; DE ROSSI, Antonio; Bazzanella, Liliana; Forsans, M. P.. - In: SHIJIE JIANZHU. - ISSN 1002-4832. - STAMPA. - 275(2013), pp. 88-89.

*Availability:*

This version is available at: 11583/2520519 since: 2016-12-06T11:34:56Z

*Publisher:*

Shijie Jianzhu Zazhishe

*Published*

DOI:

*Terms of use:*

This article is made available under terms and conditions as specified in the corresponding bibliographic description in the repository

*Publisher copyright*

(Article begins on next page)



275

都灵·可持续策略

Torino. Sustainable Strategies

201305 | 世界建筑



世界建筑

201305 | Torino. Sustainable Strategies | 都灵·可持续策略

主办: 清华大学  
 出版: 世界建筑杂志社  
 协办: 北京市建筑设计研究院

地址: 北京清华大学建筑馆  
 邮编: 100084  
 电话: 8610-62785799, 62781318  
 广告: 8610-62788125

代理: 国龙时代广告有限公司  
 传真: 8610-62770780  
 http://www.wamp.com.cn  
 E-mail: wamp@tsinghua.edu.cn

国内统一刊号 CN 11-1847/TU  
 国际刊号 ISSN 1002-4832  
 邮发代号 2-191  
 定价: 每册 ¥25  
 海外空运: US\$25



# 都灵·可持续策略

## TORINO. SUSTAINABLE STRATEGIES

World Architecture  
世界建筑 (月刊)  
1980年10月创刊  
国内外公开发行

编委会主任 庄惟敏  
编委会委员 (2010-2013)  
崔愷 陈刚 董卫 董丹申 方振宁 龚恺  
胡越 黄薇 赖德霖 李晓东 刘晓都  
马清运 齐欣 孙一民 邵韦平 单军 沈磊  
王路 王方戟 王毅 王建国 伍江 吴耀东  
吴钢 许亦农 余加 张桦 张雷 张利  
张永和 郑可 周恺 朱文一 朱小地 朱锺  
庄葵 查金荣 薄曦 Stanislaus Fung  
Eduard Koegel Verena M. Schindler

#### EDITORIAL COMMITTEE

DIRECTOR: Zhuang Weimin

#### MEMBERS (2010-2013):

Cui Kai, Chen Gang, Dong Wei,  
Dong Danshen, Fang Zhenning,  
Gong Kai, Hu Yue, Huang Wei,  
Lai Delin, Li Xiaodong, Liu Xiaodu,  
Ma Qingyun, Qi Xin, Sun Yimin,  
Shao Weiping, Shan Jun, Shen Lei,  
Wang Lu, Wang Fangji, Wang Yi,  
Wang Jianguo, Wu Jiang, Wu Yaodong,  
Wu Gang, Xu Yinong, Yu Jia, Zhang Hua,  
Zhang Lei, Zhang Li, Zhang Yonghe,  
Zheng Ke, Zhou Kai, Zhu Wenyi,  
Zhu Xiaodi, Zhu Pei, Zhuang Kui,  
Zha Jinrong, Bo Xi, Stanislaus Fung,  
Eduard Koegel, Verena M. Schindler

#### 协办机构:

浙江大学建筑设计研究院  
CCDI悉地国际  
都市实践urbanus 建筑事务所  
上海联创建筑设计有限公司  
GOA 绿城东方  
赛德设计/苏州市建筑设计研究院有限责任公司  
北京水晶石数字科技有限公司  
森拓设计机构

主管 中华人民共和国教育部  
主办 清华大学  
协办 北京市建筑设计研究院

社长 尹稚  
副社长 边兰春 赵景昭

主编 张利  
副主编 周榕

#### 采编中心

主任 孙凌波  
副主任 叶扬  
编辑 孙凌波 项琳斐 王小玲 叶扬  
本期责编 孙凌波  
编务部 闫媛

#### 运营中心

总监 吴刚  
副总监 都文娟  
拓展部主任 贾东东  
广告部主任 冯金良  
美编部主任 张晓宁  
发行部 徐丹

出版 世界建筑杂志社  
出版日期 2013年5月18日  
地址 北京清华大学建筑学院建筑馆北208  
邮编 100084  
电话 010-62785799 62781318  
传真 010-62770780  
电子信箱 wamp@tsinghua.edu.cn  
网址 www.wamp.com.cn

国内发行 北京市邮政局  
国外发行 中国国际图书贸易总公司  
刊号 NT-1086  
订 阅 全国各地邮局  
邮发代号 2-191  
国内统一刊号 CN 11-1847/TU  
国际标准刊号 ISSN 1002-4832

广告部电话 010-62788125  
传 真 010-62770780  
广告许可证 京海工商广字第0081号  
代理 国龙时代广告有限公司  
发行部电话 010-62788125  
传 真 010-62770780

定 价 25元(中国大陆) 25美元(海外空运)  
开户银行 北京银行清华园支行  
户 名 北京清大卓策文化传播有限公司  
账 号 01090334600120105468638

WORLD ARCHITECTURE (Monthly)  
www.wamp.com.cn

Issue 5 May 2013 Volume 275  
CN 11-1847/TU  
ISSN 1002-4832  
Publishing date: 2013-5-18

#### PUBLISHER

World Architecture Magazine Publications  
Founded in 1980

#### EDITORIAL OFFICE OF WORLD ARCHITECTURE

N-208, School of Architecture  
Tsinghua University  
Beijing 100084, China  
Tel: +86 10 62785799/62781318  
Fax: +86 10 62770780  
Email: wamp@tsinghua.edu.cn

#### PRESIDENT: Yin Zhi

DEPUTY PRESIDENT: Bian Lanchun, Zhao Jingzhao

#### EDITOR-IN-CHIEF: Zhang Li

DEPUTY EDITOR-IN-CHIEF: Zhou Rong

#### EDITORIAL CENTER

DIRECTOR: Sun Lingbo  
DEPUTY DIRECTOR: Ye Yang  
EDITORS: Sun Lingbo, Xiang Linfei,  
Wang Xiaoling, Ye Yang  
EXECUTIVE EDITOR: Sun Lingbo  
EDITORIAL ASSISTANT: Yan Yuan

#### OPERATION CENTER

DIRECTOR: Wu Gang  
DEPUTY DIRECTOR: Du Wenjuan  
DIRECTOR OF DEVELOPMENT DEPT.: Jia Dongdong  
DIRECTOR OF ADVERTISING DEPT.: Feng Jinliang  
DIRECTOR OF ART EDITORIAL DEPT.: Zhang Xiaoning  
SUBSCRIPTION DEPT.: Xu Dan

#### SUBSCRIPTION

Tel: +86 10 62788125  
Fax: +86 10 62770780  
Email: wamp@tsinghua.edu.cn

#### ADVERTISING

Tel: +86 10 62788125  
Fax: +86 10 62770780



总第 275 期

国家建筑科学类  
中文核心期刊

# 目 录

特别报道	12	激扬思想, 共创未来——“清华建筑思想论坛”第1、2期评述 周榕, 叶扬
简讯	14	
都灵·可持续策略	18	寻常之物: 不同于以往的长远可持续模式 米凯莱·博尼诺
	22	讲述都灵 卡洛·奥尔莫
	27	可持续发展的意大利 卢卡·莫利纳里
	31	软性可持续性: 都灵的策略 张利
重复、减少和循环使用的可持续性	34	既存建筑的再思考 达维德·托马索·费兰多
	36	林格托工厂改建, 都灵, 意大利
	48	多拉公园, 都灵, 意大利
	58	卡雷纳砖厂整建, 坎比亚诺, 都灵, 意大利
新美食学的可持续性	68	地区与全球之间 达维德·托马索·费兰多
	70	Eataly一期和二期工程, 都灵, 意大利
公共住房和公共工作空间的可持续性	76	社会团体的反击 达维德·托马索·费兰多
	78	“美景”社会住宅, 都灵(原奥林匹克村), 意大利
	82	“工具箱”都灵办公实验室, 都灵, 意大利
协调工作和家庭生活的可持续性	88	受欢迎的空间 达维德·托马索·费兰多
	90	工作—生活平衡中心, 格鲁利亚斯科, 都灵, 意大利
社会经济意义的可持续性	96	大都会中的修道院 达维德·托马索·费兰多
	98	SER.MI.G.: 前都灵军械厂及周边建筑改造, 都灵, 意大利
建筑创作	109	水塔展廊(改造), 沈阳, 中国 META-工作室
城市规划	114	荷兰可持续居住区的水系统设计与管理 周正楠
设计与理论	118	切尔尼科夫的机器主义构成思想逻辑研究 韩林飞, 邓登
城市翻修	122	“城市翻修”教学系列报告(二十): 北京奥林匹克公园北顶娘娘庙及其周边地段城市设计 朱文一, 高钰琛
全景视窗	127	“媒体建筑”系列学术活动 常志刚, 张诺然
		本期特约编辑: 米凯莱·博尼诺

MAKING ALTERNATIVE INQUIRIES: OBSERVATIONS FROM THE FIRST TWO PROCEEDINGS OF THE THINKING ARCHITECTURE TSINGHUA FORUM <i>ZHOU Rong, YE Yang</i>	12	SPECIAL REPORT
	14	WA BRIEFS
NOTHING SPECIAL: A DIFFERENT AND LONG-TERM MODEL OF SUSTAINABILITY <i>Michele Bonino</i>	18	TORINO. SUSTAINABLE STRATEGIES
NARRATING TORINO <i>Carlo Olmo</i>	22	
SUSTAINABLE ITALY <i>Luca Molinari</i>	27	
SOFT SUSTAINABILITY: THE TORINO APPROACH <i>ZHANG Li</i>	31	
RECONSIDERING THE EXISTING <i>Davide Tommaso Ferrando</i>	34	SUSTAINABILITY AS REUSE, REDUCE AND RECYCLE
LINGOTTO FACTORY CONVERSION, TORINO, ITALY	36	
PARCO DORA, TORINO, ITALY	48	
FORNACE CARENA RENOVATION, CAMBIANO, TORINO, ITALY	58	
BETWEEN LOCAL AND GLOBAL <i>Davide Tommaso Ferrando</i>	68	SUSTAINABILITY AS NEO-GASTRONOMY
EATALY, PHASE 1 AND 2, TORINO, ITALY	70	
THE COMMUNITY STRIKES BACK <i>Davide Tommaso Ferrando</i>	76	SUSTAINABILITY AS COHOUSING AND COWORKING
BUENA VISTA SOCIAL HOUSING, TORINO (FORMER OLYMPIC VILLAGE), ITALY	78	
TOOLBOX TORINO OFFICE LAB, TORINO, ITALY	82	
A WELCOMING SPACE <i>Davide Tommaso Ferrando</i>	88	SUSTAINABILITY AS CONCILIATION BETWEEN WORK AND FAMILY LIFE
CITTÀ DELLA CONCILIAZIONE, GRUGLIASCO, TORINO, ITALY	90	
A METROPOLITAN MONASTERY <i>Davide Tommaso Ferrando</i>	96	SUSTAINABILITY AS SOCIAL ECONOMY
SER.MI.G.: RENOVATION OF THE FORMER TORINO ARSENAL AND SURROUNDING BUILDINGS, TORINO, ITALY	98	
WATER TOWER PAVILION (RENOVATION), SHENYANG, CHINA <i>META-Project</i>	109	ARCHITECTURE CREATION
INTRODUCTION OF WATER SYSTEM DESIGN AND MANAGEMENT IN DUTCH SUSTAINABLE RESIDENTIAL AREAS <i>ZHOU Zhengnan</i>	114	CITY PLANNING
ANALYSIS ON CHERNIKHOV'S MECHANISTIC CONSTRUCTION LOGIC <i>HAN Linfei, DENG Deng</i>	118	DESIGN & THEORY
STUDIO TEACHING REPORTS ON URBAN FIXING (20): URBAN DESIGN OF THE BEIDING-NIANGNIANG TEMPLE AREA IN BEIJING OLYMPIC PARK <i>ZHU Wenyi, GAO Yuchen</i>	122	URBAN FIXING
ACADEMIC ACTIVITIES ON MEDIA ARCHITECTURE <i>CHANG Zhigang, ZHANG Nuoran</i>	127	PANORAMA

# 受欢迎的空间. 协调工作和家庭生活的可持续性

## A WELCOMING SPACE. SUSTAINABILITY AS CONCILIATION BETWEEN WORK AND FAMILY LIFE

达维德·托马索·费兰多/Davide Tommaso Ferrando

王寒妮 译/Translated by WANG Hanni

尽管“重新协调工作和家庭生活”一词在近年来变得越来越重要，其实早在1980年代，当它首次用于描述许多女性试图同时肩负事业和家庭的双重责任所不得不面对的困难时，该术语就已经被纳入欧盟议程。当今，工作和家庭结构在模式及需求上的改变已逐渐增加了研究机构和公司两方面的兴趣，2010年，欧盟的家庭组织联盟(COFACE)发起了让欧盟指定2014年为重新调解工作与家庭生活欧洲年的运动。政治策略包括，在劳动力市场增加女性岗位，为她们提供灵活的时间安排，以及鼓励幼托设施的实现，这些措施均通过增强性别平等以构筑更加可持续的社会。但是，根据一份近期欧盟委员会成员工作文件，该领域的工作进程缓慢，对抗经济危机的压力导致针对家庭生活和工作生活的适当平衡政策经常被推迟实施。

Although it has become increasingly important in recent years, the term "reconciliation of work and family life" has been on the European Union agenda since the 1980s, when it was first used to bring to the fore the obstacles that many women had to face when trying to combine their careers and family responsibilities. In recent times, changes in the pattern and demands of work and family structure have gradually increased the interest on the matter of both institutions and companies, and in 2010 the Confederation of Family Organizations in the European Union (COFACE) has started a campaign to have the EU designate 2014 as the European Year for Reconciling Work and Family Life. Political measures that increase women's participation in the labor market, provide flexible time arrangements and stimulate the realization of childcare facilities, all contribute in constructing a more sustainable society through the enhancement of gender equality. Though, according to a recent European Commission staff working document, progress in this field is slowing down, as the pressure to fight the economic crisis is often postponing the adoption of adequate family and work life balance policies.

收稿日期: 2013-03-29

由都灵大学平等机会委员会于2001年启动研究所获得的最终成果，“工作-生活平衡中心”是该领域引领型的项目，它旨在为该大学的学生和雇员，以及为这栋建筑所在的都市郊区的格鲁利亚斯科的家庭，提供多样组合的社会服务。从头开始项目策划即需要自创（更不用说考虑到空间和时间方面，未来使用者需求的不可预料），建筑师的任务并不容易。为了使该项目更有追求，选定了研究机构、设计师和持股人共同参与的过程，最后以都灵理工大学学生组织的工作室的研究为结束，经过讨论，最终确定了该项目的主要原则。

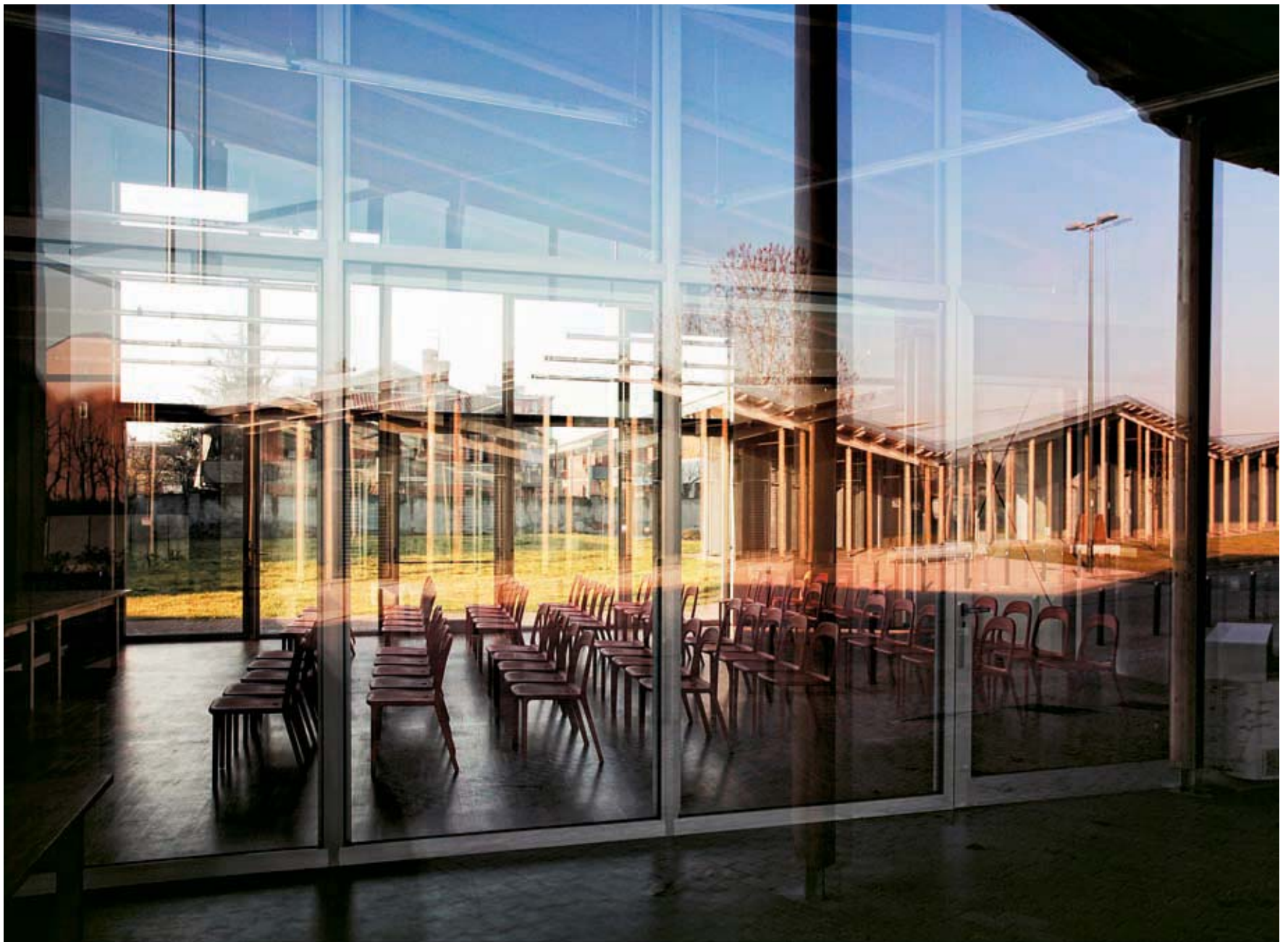
考虑到它们在城市中的存在，工作-生活平衡中心的两栋建筑（较大一栋最初被定为教学和保育中心，较小一栋容纳一系列可变的其它功能活动）安静而和谐地矗立在郊区环境肌理中，这归功于它们所限定的

Final outcome of a research started in 2001 by the Equal Opportunities Committee at the *Università di Torino*, the *Città della Conciliazione* is the pioneering project for a public facility meant to offer a diversified set of social services both to students and employees of the University, as well as to the families of Grugliasco – the small municipality in the outskirts of Torino where the building is set. With a program to invent from scratch (not to mention the unpredictability of the future users' needs, both in terms of space and time), the architects' task was everything but easy, and to make the project even more ambitious, a participated process was chosen to produce a preliminary confrontation between institutions, designers and stakeholders, which culminated in the organization of a workshop with the students of the Politecnico di Torino, out of which the principal guidelines for the project were eventually defined.

Considered in their urban presence, the two buildings of the *Città della Conciliazione* (the bigger one is primarily dedicated to education and childcare, while the smaller one hosts a changing catalog of other activities) stand quietly and harmoniously in

受欢迎的、中间状态的公共空间的人体尺度，以及人们所熟悉的斜屋顶和锯齿形的门廊的形象——一个都灵建筑学校的持久“地标”，在这个案例中，看起来比它自身的组织更充分地诠释了该研究机构的精神。从室内，事实上，这个项目被安排在不规则的、安逸的空间序列中，看似没有在所有情况下呼应清晰的功能逻辑。特别是幼儿园，它迷宫般的布局受4个令人愉悦的中心内院所支配，在内院周围布置了教室，并且它们的空间（同时考虑感知和声音条件）与屋顶剖面的变化形成了似有似无的对话。然而，该项目已经为特定的用户成功地创造出了强大的社区，这些用户们积极适应到大小事件中（由于经济危机，它要坚持最初的使命已经日益困难），这通常伴随着非常复杂的项目管理运营。□

their suburban context, thanks to the human size of the welcoming, in-between public space they define, as well as to the familiar imaginary that their pitched roofs and zigzagged porticoes manage to conjure – a long lasting "trademark" of Torino's architecture School that, in this case, seems more adequate to interpret the spirit of the institution than its own organization. From the inside, in fact, the program is arranged in irregular sequences of cozy spaces that don't seem to respond in all cases to a clear functional logic. This is particularly true for the kindergarten, whose labyrinthine distribution is dictated by the presence of the four – delightful – central patios around which the classrooms are disposed, and whose spatiality (in both perceptive and acoustic terms) is the result of an unresolved dialogue with the changing section of the roof. Nevertheless, the project has already succeeded in creating a strong community of dedicated users, who are enthusiastically adapting themselves to the smaller and bigger incidents (due to the crisis it is becoming every day harder to stick to the original mission of the structure) that often follow the management of such complex programs. □



1 工作生活平衡中心，内/外的公共空间/Città della Conciliazione,  
public space outside/inside (摄影/Photo: Michele D' Ottavio)