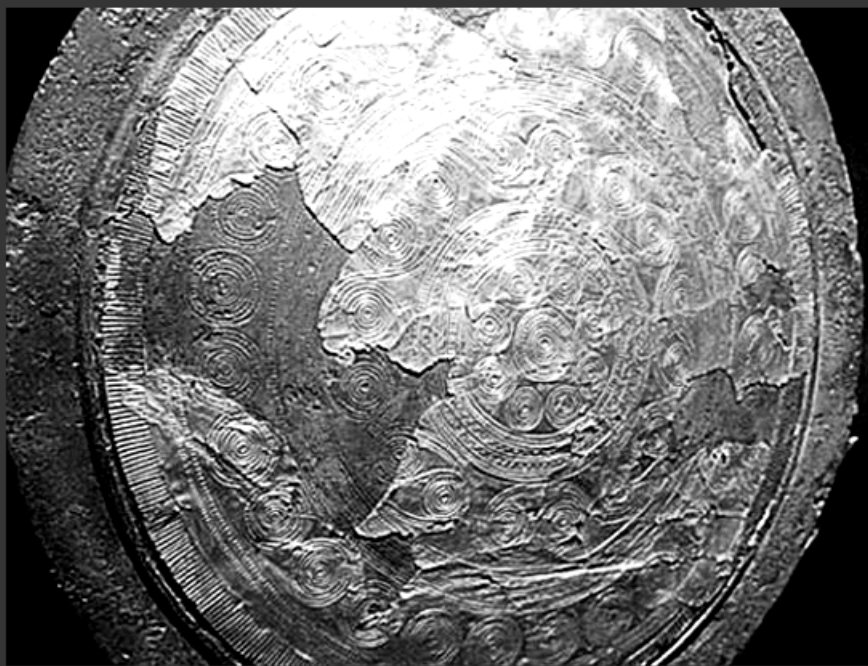


CALENDAR PUZZLES DECIPHERED IN ANCIENT STATUE: PHOTOS

Like 141 likes. Sign Up to see what your friends like.

Tweet 32

By Rossella Lorenzi



Approximately 10.23 inches across, the sun disk is made of two bronze plates decorated with concentric circles and spirals. The plates are soldered together using an outer ring: one side is gold plated, representing the sun during the day.

"The decorations in both sides of the disk include circular grooves, spirals and circles ordered in various rings. They could simply be some beautiful ornamentation. But they could well contain a mathematical puzzle," Amelia Carolina Sparavigna, assistant professor at the department of physics of Turin's Polytechnic University, told Discovery News.

She detailed her research in a paper published on the arXiv physics website.

Kim Bach

Like 141 likes. Sign Up to see what your friends like.