

Fully Integrated Hydrocarbon Reservoir Studies: Myth or Reality?

Original

Fully Integrated Hydrocarbon Reservoir Studies: Myth or Reality? / Benetatos, Christoforos; Viberti, Dario. - In: AMERICAN JOURNAL OF APPLIED SCIENCES. - ISSN 1546-9239. - STAMPA. - 7:11(2010), pp. 1477-1486. [10.3844/ajassp.2010.1477.1486]

Availability:

This version is available at: 11583/2381914 since:

Publisher:

Science Publications

Published

DOI:10.3844/ajassp.2010.1477.1486

Terms of use:

This article is made available under terms and conditions as specified in the corresponding bibliographic description in the repository

Publisher copyright

(Article begins on next page)

Fully Integrated Hydrocarbon Reservoir Studies: Myth or Reality?

Christoforos Benetatos and Dario Viberti
Department of DITAG, Politecnico di Torino,
Corso Duca Degli Abruzzi 24, 10129 Torino, Italy

Abstract: Problem statement: In the petroleum industry and especially during reservoir studies, data coming from different disciplines must be combined in order to generate a model that is representative of the reservoir being studied and can be used for defining the most viable development strategy of the field from both an economic and technical standpoint. Each of these disciplines represents an independent piece of a puzzle that is solved by professionals from various scientific fields who have different educational backgrounds. Integration among geophysics, geology, fluid dynamics and geomechanics is truly essential, but requires specific approaches and procedures for generating and calibrating a reservoir model capable of dealing with all and each of these aspects. **Approach:** Independent workflows were examined for each of the disciplines involved so as to highlight unavoidable interdependencies between static, dynamic and geomechanical models, even when the goal is to tackle each issue separately. Then, the traditional working method was compared to the integrated approach that supports the generation and calibration of models based on data and interpretation results from all the disciplines involved in the entire project. **Results:** The construction of a reservoir model should be regarded as a dynamic process, subject to repeated updates as new data is made available and by frequent modifications when inconsistencies are found between the understanding that different specialists have of the same system. This approach has exhibited great advantages in terms of improvement in the quality and flexibility of the model, reduction of working time and generation of a single final model that can be adapted or used for any kind of simulation problem. **Conclusion:** An integrated approach is necessary for reservoir modeling purposes. Modern reservoir studies should be designed accordingly to permit the full integration of static, dynamic and geomechanical data into a single reservoir model. Integration is always beneficial, even though there still remains a misconception that it is not needed at all times. For this reason, it is recommended that an effort is made to set up a model capable to handle all aspects of a reservoir study each time a new field study is undertaken, even when it is not envisioned that all aspects might be of interest in the future.

Key words: Reservoir studies, Mechanical Earth Model (MEM), reservoir study, dynamic behavior, static model, geomechanical analyses, production strategy, dynamic simulations, petrophysical parameters, hydrocarbon reservoirs

INTRODUCTION

The goal of a reservoir study is to understand and describe the dynamic behavior of a hydrocarbon reservoir by properly integrating all the available geological, geophysical, petrophysical and engineering information so as to predict the future performance of the system under different development and production strategies. To that purpose, it is common practice to rely on a reservoir model that can handle and process a large amount of data. This model is generated to accurately reproduce the structural and petrophysical properties of the hydrocarbon-bearing formation and to describe the fluid dynamics taking place within the reservoir. Ideally, the same model should be further

extended to account for the rock mechanical properties, to calculate stresses and deformations induced by operating the reservoir. In this way, all relevant aspects (static, dynamic and geomechanical) would be incorporated into one comprehensive model, by which not only single phenomena but also their mutual interactions, as they occur in the reservoir, could be investigated for forecast purposes and economic evaluations. However, a typical reservoir study can be very complex because it requires the integration of several disciplines, each having a different perspective, each governed by different sets of equations and parameters and often focused on a different problem scale. Furthermore, a subsurface body can only be characterized indirectly (e.g., through seismic methods),

Corresponding Author: Dario Viberti, Department of DITAG, Politecnico di Torino, Corso Duca degli Abruzzi 24, 10129 Torino, Italy

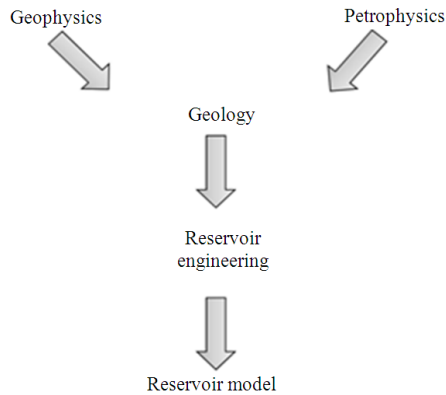


Fig.1: Traditional approach for reservoir modeling (modified, from Cosentino, 2001)

which means that no direct observation or measurement can be made, or by direct investigation of very limited portions (e.g., at exploration wells) of the whole reservoir. As a consequence, uncertainties often related to the structural and geological complexity of the upper layers of the Earth's crust, where reservoirs are found, cannot be eliminated and need to be dealt with.

Historically, the workflow followed for many years by geoscientists and engineers looked very similar to that presented in Fig. 1. Basically, each matter in a reservoir study was managed independently. The results were handed from one specialist to the other without any active interconnection or systematic information exchange. Each discipline involved in the construction of the reservoir model had to provide data with the highest possible accuracy in order to minimize the overall uncertainties. This work process was based on the conviction that if the results provided by each discipline could be accurate, the uncertainty affecting the final model would be reduced. However, this approach showed several limitations, especially when inconsistencies arose during data processing and interpretation. In these situations, a thorough and consistent re-evaluation of all model parameters was required.

In recent years, a generally improved awareness of environmental issues and the need to enhance recovery from a large number of oil and gas fields around the world demanded a new reservoir management practice. At the same time, significant advances in technology and computer science were achieved, potentially allowing data sharing and a facilitated transfer of hard and soft information among different disciplines. Thus, the market was prompted to provide highly sophisticated tools for studying and simulating the behavior of hydrocarbon reservoirs. The need for more

accurate modeling, with a higher level of details so as to capture most of the reservoir geological and geomechanical features and to describe complex interactions among rocks, fluids and wells, are currently leading to the creation of software packages that incorporate all the subsurface disciplines and provide a common project environment for petroleum geoscientists and engineers. In this approach subsequent adjustments to maintain a coherent reservoir representation and modeling are eased by the possibility that all specialists have access to updated data and results in real time.

The interaction between the various specialists involved in a reservoir model construction can produce significant changes to the final model depending on the scale of the problem they are looking at. For example, a new definition of the geological structure can heavily affect the whole reservoir model, while a re-evaluation of the porosity of a single facies would influence only the fluid amount or distribution in the model. The understanding and modeling of coupled phenomena also provide new insights of the system behavior. When fluid dynamic and geomechanical issues are solved together, the deformations induced by pressure depletion due to production and, in turn, the impact of rock compaction on fluid flow, are accounted for. This implies that the model is more sophisticated and that the relevant parameters must be defined and calibrated accordingly.

Overall, the recognition of the importance of the reciprocal influences among different disciplines and the progressively enhanced ability to actually implement integration has led, in time, to a substantially new approach to reservoir modeling. This advanced workflow can truly provide better-quality reservoir studies, but it also demands improved competences and skills.

MATERIALS AND METHODS

Description of reservoir modeling workflow: The construction of a complete reservoir model requires the integration and coupling of three basic models, each one describing in detail specific reservoir characteristics:

- Static model
- Dynamic model
- Geomechanical model

Static reservoir modeling: The static model of a reservoir can be considered the final product of the structural, stratigraphic and lithological modeling activities. Each of the above modeling parts can be

developed according to its own workflow, but a deep integration among them is necessary in order to generate a calibrated static model.

The workflow for setting up the static model always begins with the creation of a structural model, which includes all the geophysical, geological and well information that are needed to reproduce the top and bottom maps of the reservoir layers and to identify the presence of faults, if any. First, the available geophysical data are imported and quality checked. Usually 2D seismic sections that cover the portion of the subsoil where the reservoir is located are available. However, nowadays modern acquisition techniques provide 3D high resolution seismic datasets. If coupled with a good sedimentological understanding of the area, they permit identification of the geological trends and extraction of a large variety of seismically derived lithological and petrophysical properties. The seismic data are most commonly expressed in TWT (two way travel time) of the seismic rays from the seismic datum, which is usually the sea level, to the subsurface formations. Then, all the features derived from the seismic datasets are converted from the time domain to the depth domain by using an appropriate velocity model. Based on the interpretation of the seismic acquisitions in combination with well log data, the definition of the surfaces that correspond to the tops and bottoms of the reservoir layers is possible and the construction of the structural model begins. When analyzing the seismic data, faults are also recognized and mapped to be used at a later time during the construction of the model grid.

The most important part in the construction of a structural model is perhaps the fault modeling process. The role of the faults in the compartmentalization of the field and the accuracy, with which faults are mapped in the model, can have a direct impact on the way fluids can flow through the porous media. Hence, they can severely affect the results of the dynamic simulations that are used to define the production strategy of the field. In order to achieve the highest possible accuracy, all available seismic and well data should be combined. Discontinuities of the seismic signal can be interpreted as faults, but only well data can provide direct evidence that a fault has been intercepted by the well.

The stratigraphic modeling is the workflow part that deals with the description of the internal structure of the model. Zones and layers that best describe the different levels of the reservoir are defined. Modern stratigraphic interpretation also takes the principles of sequence stratigraphy into account. Sequence stratigraphy helps identifying and predicting the geometries of the various geological bodies based on

the sea level change that causes the deposition of different sedimentation patterns. The stratigraphic correlations are then migrated in a 3D static model as a series of units (beds) with a varying areal continuity throughout the field. The continuity of the sedimentary bodies is a key issue because it will eventually control the flow patterns when modeling the dynamic reservoir behavior.

In a typical numerical reservoir modeling approach, the volume of interest (i.e., the reservoir) is divided into elements-called blocks (or cells). Each block is assigned values of the local petrophysical properties, obtained from the geological and geophysical studies. In a static model the grid is generally Cartesian, thus the cells should all have a regular shape. The block dimensions are usually small in the horizontal plane (the side can be some 20-50 meters) and so as to allow accurate description of the structural and geological features. The vertical discretization is imposed so as to honor the stratigraphic sequence encountered at the wells, but it can be further refined where needed or if the reservoir comprises one or more thick stratigraphic units.

The last part of the static modeling workflow is the assignment of appropriate lithological (facies modeling) and petrophysical properties to each block. Facies can be described as lithological units that include a series of geological characteristics. They can be considered as an elementary part of the reservoir model. During facies modeling, the grid cells are classified in a usually limited number of facies that can be used in the following for the tuning of the static model. The facies distribution can be performed using a variety of statistical approaches; with these the attempt is made to rely on some objective (or less subjective) rules to distribute the information recorded at the wells throughout the entire reservoir.

Petrophysical modeling consists in assigning the petrophysical parameters to the model grid blocks. Fluids saturations and porosity are the most important parameters that control the amount of the hydrocarbons stored inside the reservoir; permeability dictates the ease with which they can flow and thus eventually be produced.

The values of the petrophysical parameters usually derive from well and core data but their distribution in the model is controlled by deterministic or statistical methods. Possible facies distributions created using a stochastic approach are presented in Fig. 2. In the last decades geostatistics has become a valuable tool with which the areal distribution of the petrophysical properties can be generated in a statistical and geological representative manner.

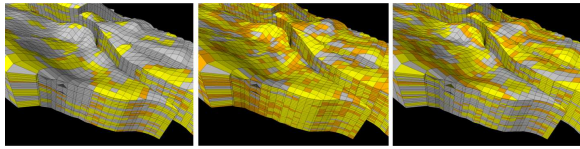


Fig. 2: Example of three realizations of a fully stochastic facies distribution in a static model

Usually geological models are constructed using very fine grids that are not suitable for dynamic simulation purposes. Although the more detailed the model, the most accurate the description of fluid flow phenomena, a good balance between accuracy and speed of computation is generally sought. Therefore, a coarser grid is then generated to be exported in the dynamic model that then can be used in the static model. This implies that all the properties in the grid need to be upscaled and the problem arises on how the properties of very large grids (e.g., millions of cells) should be transposed to much smaller grids (tens or hundreds of thousands of cells). A number of analytical and numerical techniques have been proposed to calculate an average value used to populate the cells of the simulation grid (Christie, 1996; Carlson, 2003). Depending on the petrophysical parameter (e.g., porosity or permeability) that needs to be upscaled, a different approach should be used. The selection of the most adequate method for upscaling mainly depends on the variance and distribution of the property values and is of crucial importance since all the simulation results are obviously affected by the characteristics of the final reservoir model. Sensitivity studies are highly recommended in order to evaluate the most suited upscaling procedure for the case under investigation (Cosentino, 2001).

Dynamic reservoir modeling: The objective of reservoir modeling is to build a numerical model able to simulate the dynamic behavior of a given hydrocarbon reservoir. The purposes of the model, once built and calibrated, are various: estimate system parameters, forecast the field productivity according to different development scenarios and learn more about specific phenomena.

Among the different techniques available in the market to study hydrocarbon reservoirs, 3D numerical modeling represents one of the most widespread and powerful approaches for reservoir simulation in the petroleum industry.

As previously discussed, the model grid constitutes the geometrical discretization of the reservoir and is built on the basis of the structural maps (top, bottom, shape, thickness). The model blocks are then connected through flow equations describing the fluid flow mechanisms.

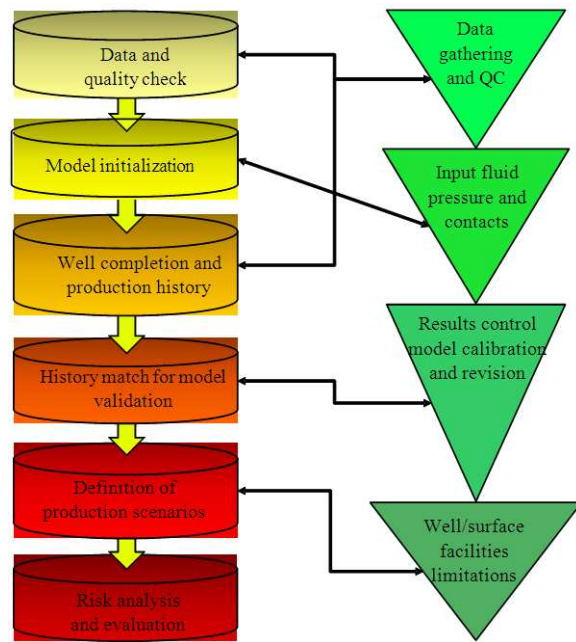


Fig. 3: Schematic representation of the dynamic modeling workflow

The components of a dynamic reservoir modeling workflow are the static model, the PVT data of the fluids, the rock-fluid interaction properties, the equilibration data (i.e., initial conditions), the well data and the production history.

A schematic of the reservoir dynamic modeling workflow is displayed in Fig. 3.

The basic workflow consists in 5 distinct steps:

- Data acquisition
- Model design
- Initialization
- History matching
- Forecast

The first step of the workflow is the data acquisition, i.e., the gathering of available data and the quality control of each piece of information.

The design of a simulation model is influenced by the type of process to be modeled, the complexity of the fluid-mechanics problem, the objectives of the study, the quality of the reservoir data, the time and budget constraints. The most common simulators are immiscible black oil programs; the simulation of more complex processes requires use of special-purpose simulators, often supported by peripheral programs (Mattax and Dalton, 1990).

The initialization phase consists in assigning the initial saturation and pressure distributions and to double-check the hydrocarbons volumetric evaluations performed with the static model and through material balance techniques. In the history matching phase the model is calibrated based on the available measured pressure and production data, by modifying the input parameters. Once the model is properly calibrated, productivity and recovery forecasts are performed for different field development scenarios.

The main input data for a dynamic reservoir model comes from different sources. Well logs typically provide porosity and water saturation values along the well trajectory, while RFTs and MDTs measure the formation pressure profile versus depth, which is crucial for initializing the model. Laboratory routine analyses on cores can provide information about horizontal and vertical permeabilities; special core analyses are performed to obtain capillary pressures and relative permeability curves. Fluid samples are collected and analyzed in laboratories to obtain PVT fluid properties. Well testing is a common and powerful tool to get reliable estimates of the well productivity, of the permeability of the formation and of possible heterogeneities within the test drainage area.

The principal input parameters of a dynamic reservoir model can be classified according to the following scheme:

- Petrophysical data: absolute/relative permeability, porosity, water saturation, net to gross ratio, capillary pressure
- PVT data: oil properties (density, formation volume factor, gas-oil solution ratio, viscosity, saturation pressure), gas properties (gas gravity, compressibility factor, formation volume factor, viscosity) and water properties (density, formation volume factor, viscosity, compressibility)
- Reservoir data: depth of the fluid contacts, initial pressure at a given depth (datum), temperature and aquifer parameters
- Production data: production/injection fluid rates, bottom hole and tubing head flowing pressure measurements, static bottom hole pressure values;
- Completion data: well productivity and injectivity index, wellbore diameter, skin factor (i.e., permeability reduction in the near wellbore due to drilling and completion mud invasion)
- Well and/or field constraints: target (maximum) production/injection rates, maximum water rate, maximum gas-oil ratio, minimum flowing bottom hole and minimum tubing head pressure
- Economic requirements: minimum oil and gas production rates, maximum water production rate

Geomechanical model: Historically, much of reservoir simulation has accounted for rock mechanics only by simple use of a constant or pressure-dependent compressibility. In reality, in many reservoirs fluid flow is intimately coupled with rock mechanics. Therefore, rigorous reservoir simulation should include simultaneous solution of multiphase flow and stresses and account for the appropriate dependencies between these two processes.

Geomechanical models allow prediction of the stress state perturbations generated in the reservoir and also in the surroundings, for instance in the cap rock, due to hydrocarbon production and storage operations. The physical consequences of stress changes, such as permeability variation and faults (re)activation, are often not negligible and strongly affect the reservoir performance and safety, especially in stress-sensitive formations. So, the application of geomechanics into reservoir issues requires the solution of a coupled fluid flow and stress/deformation problems. The coupled approach involves the solution of a multiphase flow problem in porous media, typical of dynamic reservoir modeling, whereas the solution of deformation and stress issues pertains to geomechanical modeling. The geomechanical model is strongly connected to the static and dynamic models since it collects all rock/soil and fracture features of the reservoir. Nevertheless, a substantial difference related to model scale exists between the definition of a static model for dynamic analysis only and the generation of a static model suitable also for geomechanical purposes. In fact, because the goal of a reservoir study is the optimization of production strategy, the domain of analysis is generally restricted to the hydrocarbon bearing formation and to a small portion of the aquifer, if any. On the other hand, geomechanical analyses require structural and geological modeling at the regional scale in order to consider the stress-strain effects of the surrounding formations on the reservoir and its cap rock. Thus, the geomechanical model must exceed the reservoir dimensions to include also overburden, underburden, (Settari and Sen, 2007). So, it is a common practice to populate the whole enlarged static model with geomechanical parameters and only the dynamic reservoir volume with fluid-dynamic parameters.

The basic workflow for geomechanical modeling coincides with the one described for reservoir dynamic modeling: data acquisition, model design, initialization, history matching and forecast.

The first step in every process related to geomechanics is building a Mechanical Earth Model (MEM) (Perchikolaee *et al.*, 2010). The MEM is a numerical representation of the state of stress and rock

mechanical properties for a specific stratigraphic section in a field or basin. In its basic form, the MEM consists of depth profiles of: elastic and/or elasto-plastic parameters, rock strength and earth stresses referenced to the local stratigraphic section.

MEM's can be developed from the exploration through the development phase of a reservoir and can be simple one-dimensional models or complicated three-dimensional model to include full description of pore pressure, stresses and mechanical properties. In 3D models, lateral variation in rock mechanical properties is included using seismic data, log data and lithostratigraphic model.

MEM's represent the starting point of each geomechanical analysis: wellbore stability prediction, casing design, perforation and stimulation job design, prediction of reservoir compaction and subsidence, reservoir safety analyses and EOR project planning.

Just as it happens in the creation of a reservoir dynamic model, also the geomechanical model must be calibrated against historical production data and can be updated using real-time measurements. But in this case, the calibration process must take into account not only production data, like fluid rates and pressure values, but also information related to the stress/strain evolution during production, such as surface subsidence measurements, leak off test data. Only this approach allows definition of a reliable tool for predicting the reservoir behavior according to different production strategies.

The focal issue of geomechanics application to reservoir disciplines is the definition of the suitable coupling degree between fluid-flow and geomechanical processes. Several authors (Dean *et al.*, 2003) have presented different theoretic approaches according to different coupling degrees which can be generally classified into fully coupled, partially coupled and one-way coupled methods. The first approach is based on the simultaneous determination of all variables, i.e., fluid flow and displacement calculations are performed together. In the iterative coupled approach, the basic equations for multiphase porous flow and rock deformation are solved separately and sequentially and the coupling terms are iterated at each time step. The exchange of information between the reservoir simulator and the geomechanic module is generally performed through a coupling code that also verifies the convergence of the coupling iterations. In the one-way coupling technique, only geomechanical parameters are updated at each time step according to the fluid-dynamic reservoir behavior (i.e., pressure and temperature variations) defined via conventional reservoir models. The fluid flow simulation, instead, is

not affected by geomechanical behavior of the formation.

Obviously, the higher the degree of coupling, the higher the need of specific field data acquisition and laboratory test and the request for technical skills, with a consequent financial charge increment. Also, different reservoir conditions and operational scenarios involve different levels of interaction between rock deformation and fluid flow in hydrocarbon reservoirs. Even if couplings physically exist to some extent in all reservoirs, it is important to evaluate the real added value of a coupled simulation approach for each specific case and to take into consideration other solutions, such as the possibility to substructure complex models (Rocca and Verga, 2008; Rocca, 2009). For example, in the case of subsidence analyses for standard reservoirs (i.e., no stress sensitive formations), the one-way coupling approach is absolutely capable to predict the impact of reservoir depletion on formation displacement. On the other hand, the adoption of a coupled approach is necessary in the case of stress-sensitive reservoir, where stress, pressure and temperature variations due to production (or storage) operations modify the nature of porous media. In particular, stress changes affect those parameters which primarily influence the performance of both individual wells and of the reservoir as a whole. In fact, the effects may result in rock movements such as compaction, induced fracturing, enhancement of natural fractures and/or fault (re)activation, which in turn modify the reservoir properties, i.e., permeability and fault transmissibility (Rocca and Verga, 2008).

RESULTS

Calibration of reservoir models:

Static stand-alone calibration: During the construction of the static model, as new data are progressively added to the model, it is necessary to perform a re-calibration of the static model before it becomes ready for simulation purposes. Data from a new seismic section or from a new well can lead to the reconstruction of the structural model or to a re-evaluation of the petrophysical parameters and their distribution in the geological grid. The high complexity and heterogeneity that characterize the majority of the reservoirs demand the incorporation of all available information. The fault modeling is one of the parts of the geological workflow that frequently get re-assessed when new seismic or well data (e.g., new well tops) are acquired. Faults contribute to the compartmentalization of the field and, hence, strongly affect the fluid flow in the reservoir, but they also have an impact on the shape

of the cells, potentially leading to grid anomalies (e.g., spikes, wedges.). This combination of new seismic and well data can lead to modifications of the geometry of geological zones from which the reservoir is produced. This can have an immediate effect on the hydrocarbon volume, to which in turn the economic evolution of the field is directly connected. Since the geological model and property distribution define the basic 'skeleton' on which the dynamic and the geomechanical models are then build, it is very important that it is well calibrated and coherent with all the available data.

Dynamic stand-alone calibration: History matching is a complex procedure, strongly dependent on the quality and amount of available data, the particular reservoir being studied, the resources allocated to the project and eventually the experience and personal attitude of the engineers working on the model (Cosentino, 2001).

Several limitations and critical factors are typically associated to the history matching process, the most important one being the non-uniqueness of the solution. A second critical aspect of the process is the iterative nature of the history match. In a typical reservoir study the history match requires to modify several parameters having a completely different nature. Normally, some parameters are related to the static-geological modeling, whereas other parameters are dynamic. In the dynamic modeling process all modifications should be shared with the other professionals of the group, in order to ensure consistency. Uncontrolled adjustments of model parameters can easily and quickly render useless the efforts of the whole team.

Typically, the simplest and most traditional approach to history matching is the stand-alone calibration of the dynamic model. The structural and geological model is generated independently and beforehand. Once a properly defined static model has been set up, it is employed to define a dynamic model which is subsequently modified and calibrated by acting on some parameters. In this kind of approach, the static model is usually not modified, not to mention challenged and all the adjustments are performed in the dynamic modeling environment.

Even if it is not possible to define a standard procedure for the history matching process, some general steps can be identified. The first stage in a calibration process is to define the critical parameters (i.e., those affected by a high degree of uncertainty) and the key wells (i.e., wells with typical production behavior and long historical production) to be tuned in order to obtain a satisfactory match.

Two steps are crucial in the calibration process: pressure match and saturation match. The pressure

match requires the calibration of the global energy balance in the reservoir. The global pressure level of the field is first adjusted by modifying the pore volumes occupied by the different fluids (oil, gas and aquifer), the formation compressibility and the permeability on a field scale. In a second stage the individual well behavior is matched through local variations of the same parameters. Permeability is generally the principal reservoir variable to modify in order to improve the pressure match. Saturation history matching is usually carried out after the pressure match with the aim of reproducing the reservoir fluids distribution, both in terms of arrival time of water/gas at the wells and of evolution of the associated production profiles after breakthrough. Again, the match should be focused first on the adjustment of the global field performance and then on the behavior of the individual wells. Relative permeability curves represent the key matching factor in this stage of the history matching process.

The history matching phase can be considered successful when the model is able to reproduce the historical dynamic behavior of the reservoir. It is not crucial to obtain an inherently good match of every well; it is important that the model is able to capture the main production mechanisms governing the field behavior so that the model can be effectively employed for its real purpose, i.e., the development and production forecast scenarios.

Integrated calibration (static-dynamic models): A huge limitation of the stand-alone approach to reservoir modeling is the limited exchange of information among the different technicians (typically geologists and reservoir engineers) involved in the reservoir study. The exchange can be truly effective and advantageous only if the different phases of the study are fully integrated and if the activities are performed in parallel with a proper timing.

Traditionally, the static modeling in a reservoir study is performed separately by a group of geologists and simulation experts. The modeling workflow ends with the computation of the fluids initially in place. All subsequent modifications performed in the dynamic modeling phase are rarely integrated in the original static modeling. A more effective approach, which is recently being adopted in many reservoir studies, is to continue the static modeling phase and the exchange of information throughout the whole reservoir modeling process. Following this approach, the results of the dynamic analysis and modeling can be directly employed in the static modeling phase in order to better constrain the workflow and get more reliable results. The static and dynamic modeling, represent two distinct but interchangeable phases of the whole process and can be considered concluded only when the integrated model is fully reviewed and integrated.

The integrated process can be time consuming and requires an open option for modifications at all levels of the workflow: for instance, during the process it can be necessary to change the structure of the reservoir or the formation layering, causing a new processing of most steps of the static and dynamic modeling. Notwithstanding the disadvantages and drawbacks involved, an integrated workflow allows obtainment of a significantly improved picture of the reservoir, to better handle all the data and mostly to ensure a high level of consistency between the different phases of the study.

In order to ensure the success of an integrated approach, the traditional sequential planning of the activities must be replaced by an integrated, parallel, planning (Saleri, 1993) which allows overlapping of the time frames associated to the various contributing activities, facilitates exchange and integration possibilities and reduces potential delays (every actor remains active for the whole duration of the process).

DISCUSSION

Integrated calibration (static-dynamic-geomechanical models): Numerical modeling of coupled processes is extremely complex and has been historically carried out in three separate areas: geomechanical modeling, which has the primary goal of computing stress/strain behavior; reservoir simulation, which essentially models multiphase flow and heat transfer in porous media; and fracture mechanics, dealing with crack propagation and geometry. Usually each of these disciplines makes simplifying assumptions about the part of the problem that is not of its own primary interest. However, such approach is unacceptable in situations where there is a strong coupling, such as weak plastic reservoir rocks and unconsolidated porous media (Settari and Maurits, 1998).

According to a totally integrated workflow, the need for possible geomechanical investigations should be taken into account from the very beginning of a project, thus starting from the static model definition: a change in prospective is needed in order to shift from the reservoir size model to the regional scale model (Fig. 4). This approach allows for a high level of detail at both regional and reservoir scales.

Obviously, the number of cells becomes a crucial aspect for an enlarged regional model, so coarsening and refinement techniques are needed: coarsening is applied far from the reservoir where the cells are characterized by minor or null production-induced stresses, while refinement of the fluid-dynamic domain is necessary for an adequate description of the analyzed flow phenomena.

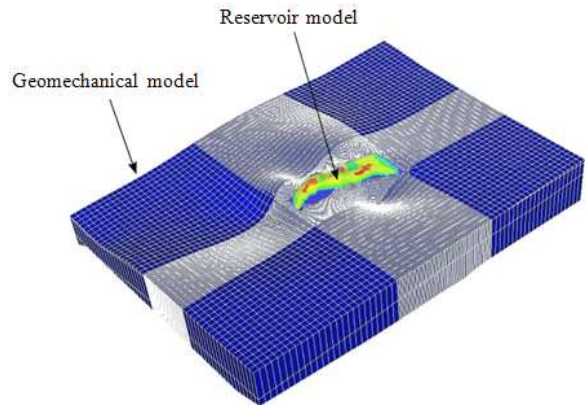


Fig. 4: Difference between a geomechanical model (regional scale) and a reservoir model

Also, once the large model is set up for geomechanical applications, the reservoir zone can be extracted so that dynamic simulations can be run on the portion of interest with relevant time saving.

The best advantage of this working philosophy is the definition of a static model suitable both for dynamic analyses only as well as for geomechanical purposes. Even if the need for geomechanical analyses is not envisioned when a new field study is undertaken, it is recommended that an effort is made to keep that option viable for the future. In fact, the retroactive application of an integrated workflow to an existing calibrated reservoir model requires that the static model be embedded into a larger to geomechanical one. But, often, the grid geometry outside the reservoir region is geologically meaningless, so it must be severely modified, if at all possible, in order to be consistent with the regional geological settings and trends (Sacchi and Rocca, 2010).

Once generated, the regional static model can then be initialized and calibrated according to a coupled fluid-flow and stress/strain approach. The iterative, calibration process is performed by modifying not only the petrophysical, geometrical, PVT, aquifer parameters but also the geomechanical ones, such as the initial stress field, until the reservoir historical behavior is reproduced with an acceptable accuracy in terms of both production data and stress/strain evolution during production. The calibration phase can be developed essentially according to two main couplings between reservoir flow and stresses: pore volume coupling and flow properties coupling. Pore volume coupling requires that the changes in porosity and bulk volume in the reservoir, as calculated by geomechanics, are honored in the reservoir simulator. Conventional (uncoupled) reservoir models use a fixed (non-

deforming) mesh and a simple law of porosity as a function of pressure. In reality, the reservoir and its surroundings deform in response to changes in pressure (and temperature) in the reservoir, but these changes are themselves function of the deformations- and, hence, the coupling. Flow properties coupling, on the other hand, is primarily the response of the formation permeability to deformation expressed as either stress or strain changes. Again, the stress-induced changes of the permeability field modify the pressure field, which in turn drives the stress and deformation changes (Settari and Sen, 2007).

CONCLUSION

The aim of the study is to demonstrate the need for an integrated approach in the construction of hydrocarbon reservoir models. In fact, a truly integrated workflow leads to an overall improvement of the reservoir model from the static, dynamic and geomechanical point of view. The updates, revisions and modifications proposed at each step, including progressive adjustment of the model parameters in the calibration phase, are shared among the different specialists and coherency is inherently ensured.

During dynamic modeling, the engineers can provide the geologists with valuable information about the hydraulic connectivity among the geological bodies or through faults intersecting the reservoir. They can also offer feedback on the petro physical parameters and their distributions based on the calibration of the global energy balance of the field, as the global pressure level is adjusted by modifying the pore volumes occupied by the different fluids.

The coupling between rock mechanics and fluid flow properties can have a significant impact on fluid dynamic simulations. For this reason, the calibration of a model, so that it can simultaneously reproduce the stress/deformation evolution and the production history, is deemed necessary. However, some geomechanical properties are directly connected with the static model parameters, so it is often possible that the calibration procedure involves modifications to the parameters of the static model as well. For this reason too, an integrated methodology is the only one guaranteeing a rigorous technical approach to reservoir studies.

The main advantage of a working philosophy that looks at the whole picture rather than at specific issues of a reservoir study is the possibility to set up a model which can be equally employed for the development and production forecast scenarios and for geomechanical purposes, such as subsidence

predictions. Therefore, even if the need for a model capable to handle all geological, dynamic and geomechanical aspects is not envisioned when a new field study is undertaken, it is recommended that an effort is made to keep that option viable for the future. Additionally, the cost of an incorrect production strategy due to an incorrect understanding of the geological features and settings, or due to failing to capture the main production mechanisms governing the field behavior, is much more expensive than that of an integrated study.

The need for integration in reservoir modeling has been well perceived by scientists, who developed the theory and practices for making it a reality, but also by the various companies specialized in software used for numerical simulation of various kinds. In fact, in the last several years, a continuous reduction of separate stand-alone software packages was observed. At the same time, a migration to single multi-functional software platforms was witnessed in the petroleum field, so that geoscientists and the engineers can not only update data and share results with all users in a common working environment, but they can also use the same software and work in real time on the same project.

So the path for the creation of high-quality, reliable and versatile hydrocarbon reservoir models has been set and paved; now individuals and personal attitude to team working will make the difference.

REFERENCES

- Carlson, M., 2003. Practical Reservoir Simulation: Using, Assessing and Developing Results. 4th Edn., Penn Well Corporation, ISBN: 0-87814-803-5, pp: 516.
- Christie, M.A., 1996. Upscaling for reservoir simulation. JPT, 48: 1004-1010. <http://www.onepetro.org/mslib/servlet/onepetroview?id=00037324&soc=SPE>
- Cosentino, L., 2001. Integrated reservoir studies. Editions Technip., ISBN: 2-7108-0797-1, pp: 310.
- Dean, R.H., X. Gai, C.M. Stone and S.E. Minkoff, 2003. A comparison of techniques for coupling porous flow and geomechanics. Proceeding of the SPE Reservoir Simulation Symposium, Feb. 3-5, Houston, Texas, USA. SPE, pp: 1-9. DOI: 10.2118/79709-PA
- Mattax, C.C. and R.L. Dalton, 1990. Reservoir Simulation. In: Doherty Memorial fund of AIME, Henry, L. (Ed.). Society of Petroleum Engineers, ISBN: 1-55563-028-6, pp: 173-173.

- Perchikolaee, R.S., R.S. Shadizadeh, K. Shahryar and E. Kazemzadeh, 2010. Building a precise mechanical Earth Model and its application in drilling operation optimization: A case study of Asmari formation in Masuri oil field. Proceeding of the CPE/SPE International Oil and Gas Conference and Exhibition, June 8-10, Beijing, China. Society of Petroleum Engineers Inc., pp: 21-21. DOI: 10.2118/132204-MS.
- Rocca, V. and F. Verga, 2008. Stability modelling applied to wellbore design. *Geam. Geoingegneria Ambientale E Mineraria*, 3: 5-12. ISSN: 1121-9041
- Rocca, V., 2009. Development of a fully coupled approach for evaluation of wellbore stability in hydrocarbon reservoirs. *Am. J. Environ. Sci.*, 5: 781-790. ISSN: 1553-345X
- Sacchi, Q. And V. Rocca, 2010. Gridding Guidelines for Improved Embedding of a Petrel Reservoir Model into Visage. SIS 2010 Global Forum, London, UK.
- Salari, N.G., 1993. Reservoir performance forecasting: acceleration by parallel planning. *JPT*, 45: 652-657. <http://www.onepetro.org/mslib/servlet/onepetroview?id=00025151&soc=SPE>
- Settari, A. and F.M. Maurits 1998. A coupled reservoir and geomechanical simulation system. Proceeding of the SPE Reservoir Simulation Symposium, Feb. 12-15, San Antonio, Texas, USA. SPE, pp: 1-8. DOI: 10.2118/50939-PA
- Settari, A. and V. Sen, 2007. The role of geomechanics in integrated reservoir modeling. *TLE*, 26: 622-627. DOI: 10.1190/1.2737102