

Debris flow and rockslide analysis with advanced photogrammetry techniques based on high-resolution rpas data. Ponte formazza case study (nw alps)

Original

Debris flow and rockslide analysis with advanced photogrammetry techniques based on high-resolution rpas data. Ponte formazza case study (nw alps) / Notti, D.; Giordan, D.; Cina, A.; Manzino, A.; Maschio, P.; Bendea, I. H.. - In: REMOTE SENSING. - ISSN 2072-4292. - 13:9(2021), p. 1797. [10.3390/rs13091797]

Availability:

This version is available at: 11583/2913537 since: 2021-07-17T17:51:50Z

Publisher:

MDPI AG

Published

DOI:10.3390/rs13091797

Terms of use:

This article is made available under terms and conditions as specified in the corresponding bibliographic description in the repository

Publisher copyright

(Article begins on next page)



Article

Debris Flow and Rockslide Analysis with Advanced Photogrammetry Techniques Based on High-Resolution RPAS Data. Ponte Formazza Case Study (NW Alps)

Davide Notti ¹, Daniele Giordan ^{1,*}, Alberto Cina ², Ambrogio Manzino ², Paolo Maschio ² and Iosif Horea Bendea ²

¹ Italian National Research Council, Research Institute for Geo-Hydrological Protection (CNR-IRPI), Strada delle Cacce 73, 10135 Torino, Italy; davide.notti@irpi.cnr.it

² Department of Environment, Land and Infrastructure Engineering (DIATI), Politecnico di Torino, Corso Duca Degli Abruzzi, 24, 10129 Torino, Italy; alberto.cina@polito.it (A.C.); ambrogio.manzino@polito.it (A.M.); paolo.maschio@polito.it (P.M.); iosif.bendea@polito.it (I.H.B.)

* Correspondence: daniele.giordan@irpi.cnr.it

Abstract: The use of a Remotely Piloted Aircraft System (RPAS) for the characterization and monitoring of landslides has been widely improved in the last decade. In particular, the use of this system is particularly effective for the study of areas prone to geohazards. Zones affected by landslides, such as rock slides and debris flows, are often quite critical in terms of accessibility due to unstable blocs that can strongly limit the direct access to the studied area. In this paper, we present the case study of Ponte Formazza in NW Italian Alps. In June 2019, a massive and complex debris flow re-mobilized about 300,000 m³ of a rockslide deposit that occurred in 2009. In this particular environment, we tested traditional, direct and mixed photogrammetric approaches using various configurations of Ground Control Points (GCPs) of the photogrammetric block and by calculating the relative errors. The minimum configuration of GCPs was established to reduce in situ measurements without degrading the accuracy of the cartographic products. The images of three RPAS campaigns (2017, 2018 and 2019), processed with a Structure from Motion (SfM) technique, allowed us to obtain very high-resolution orthophoto and digital surface models (DSMs) before and after the 2019 event. A few GCPs, geolocated with a Global Navigation Satellite System (GNSS), improved the orthophoto and DSM quality (Root Mean Squared Error RMSE 5 cm) even in the areas far from the drone deployment. The availability of high-resolution models has been fundamental for the identification of the volume changes. Furthermore, the 3D view supported and completed the geomorphological mapping of affected areas, particularly in the areas where the field survey is dangerous. The use of ancillary meteorological data and Sentinel-2 satellite images allows for a better definition of the kinematics and the predisposal and triggering factors of the 2019 debris flow.

Keywords: RPAS; debris flow; rockslide; Structure from Motion; direct photogrammetry; Sentinel-2



Citation: Notti, D.; Giordan, D.; Cina, A.; Manzino, A.; Maschio, P.; Bendea, I.H. Debris Flow and Rockslide Analysis with Advanced Photogrammetry Techniques Based on High-Resolution RPAS Data. Ponte Formazza Case Study (NW Alps). *Remote Sens.* **2021**, *13*, 1797. <https://doi.org/10.3390/rs13091797>

Academic Editor: Alessandro Corsini

Received: 26 March 2021

Accepted: 29 April 2021

Published: 5 May 2021

Publisher's Note: MDPI stays neutral with regard to jurisdictional claims in published maps and institutional affiliations.



Copyright: © 2021 by the authors. Licensee MDPI, Basel, Switzerland. This article is an open access article distributed under the terms and conditions of the Creative Commons Attribution (CC BY) license (<https://creativecommons.org/licenses/by/4.0/>).

1. Introduction

In the last few years, the use of unmanned aerial vehicles (UAVs) or Remotely Piloted Aircraft Systems (RPASs) in the study of natural hazards has significantly increased [1,2].

The improvement of autopilot or semi-autopilot systems, high-resolution digital cameras, and GNSS and inertial systems has allowed RPAS to increase the precision and accuracy of the data. Captured images are geocoded by various approaches requiring onboard and/or ground-based solutions. UAVs are usually equipped with positioning apparatuses. To improve the final positioning accuracy, ground control points (GCPs) are positioned, surveyed and used in the image post-processing. A possible technical solution adopted for improving the quality of the GNSS position is the use of Real-Time Kinematic (RTK) receivers [3,4] onboard UAVs. This approach, called direct photogrammetry, allows

RPAS surveys without using traditional GCPs on the ground [5,6]. However, such a technique is a recent technology and needs to be tested and compared with traditional photogrammetry approaches.

The Structure from Motion SfM [7–9] is a codified process that can generate a 3-D point cloud from the RPAS geocoded images. Starting from a densified pointcloud, SfM software can also generate a Digital Elevation Model (DEM) and orthoimage. These map layers can be used to extract image features (e.g., colors, texture) or geomorphological features from DEM or 3-D image analysis (e.g., slope, aspect, hydrographic network).

Among the natural processes, the landslides are suitable for UAV analysis, and in the literature, it is possible to find several examples of this [10–15]. The multi-temporal analysis of UAV data allows us to detect and study the morphological changes that have occurred to landslides using images [16,17]. The DEM time series provides detailed multi-temporal sets of 3D surfaces useful for vertical displacements and volume change investigation [7,18,19].

The debris flows in mountain areas are among the main risks for human life and cause damage to infrastructure and buildings [20]. Like many other mountainous areas, the Alps are affected by debris flow, especially in the summer and autumn seasons [21–23].

Several studies observed an increase in the frequency and intensity of debris flow in the Alps that could be related to climate change that provides more extreme rainfall events [24–27]. Other events that could activate debris flows are the sudden outburst of glacial lakes [28] or the increase in source materials like rockfall accumulation [29] that creates unstable deposits that could be activated during extreme rainfall events.

An important element that should be considered in the study of debris flow is the sequence of events that generates the critical condition for the activation of the gravitational process. In particular, the identification and the characterization of the deposits that the debris flow has mobilized are fundamental elements that can be evaluated for a correct evaluation of the possible repetition of the process. The identification of the critical sequence of the critical events and the evaluation of the possibility that a new debris flow could occur are the basis for the improvement in early warning systems [30]. To reach this goal, very high-resolution orthophoto and digital surface model (DSM) obtained by RPAS could be a precious help [31].

In this work, we present the application of direct and mixed photogrammetry, SfM based on RPAS data to study the debris flow that hit the village of Ponte Formazza (NW Alps, Italy) on 10 June 2019. The availability of pre- and post-event images made with RPAS data allowed detailed mapping of debris flow. We tested and compared the accuracy and the volume estimation of different photogrammetry approaches: traditional, direct, and mixed. We applied the SfM technique to extract pre- and post-event DSMs and calculate the topography and volume variation. We also used low-resolution satellite data of Sentinel-2 to make a rapid mapping of the affected area and estimate the snow coverage. Meteorological and snow data allowed us to reconstruct the predisposing and the triggering factor of this debris flow. The potentialities and limitations of the RPAS applied to large a landslide study are discussed here.

2. Study Area

2.1. Geological and Geomorphological Settings

The Ponte Formazza is a small village located in the upper Formazza Valley, Piemonte region (NW Italian Alps), here several hotels and touristic facilities were built on the east side of the Toce river.

The study area (Figure 1) is inside Lepontine nappe of the Penninic domain, and it is located at the tectonic boundaries between Teggiolo formation (made by calcschist, metapelite lithology) and the Antigorio formation (orthogneiss lithotype) [32].

The main tectonic lineaments have directions SW-NE, E-W and NW-SE, these lineaments drive at the local scale the fracture systems of the rock mass.

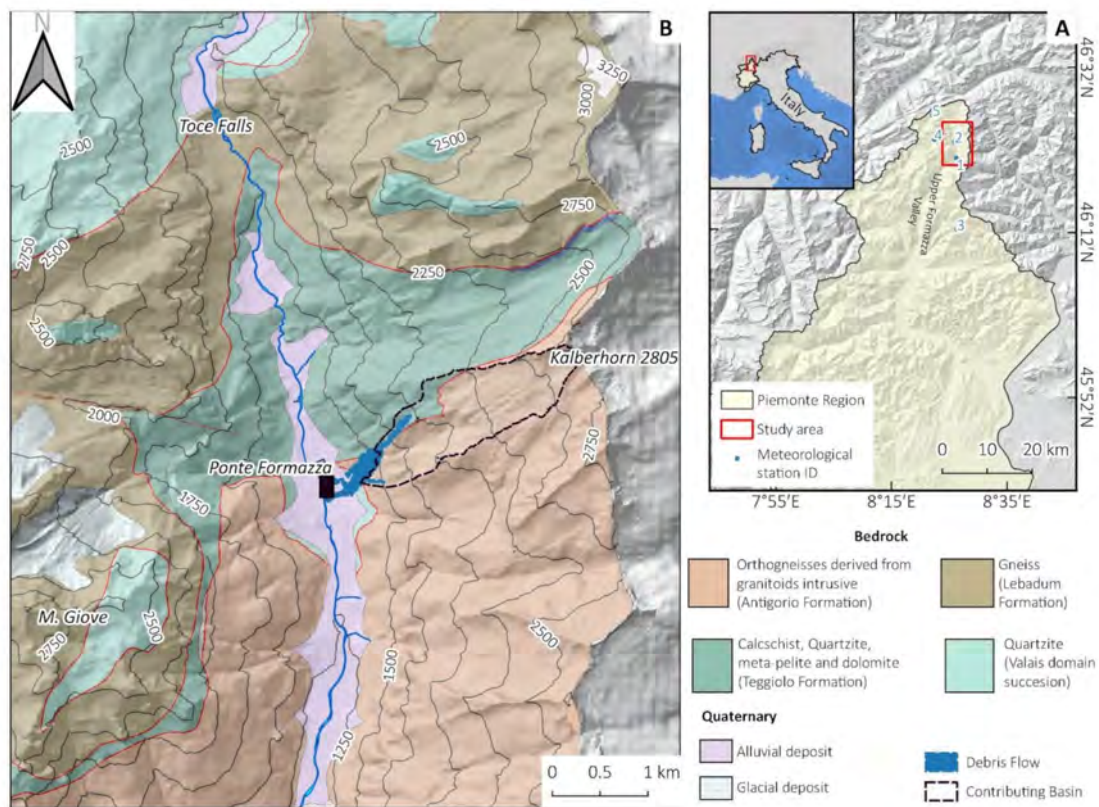


Figure 1. (A) Location of the study area. (B) Geological settings of the study area modified from [32] and available on https://webgis.arpa.piemonte.it/Geoviewer2D/index.html?config=other-configs/geologia250k_config.json (accessed on 2 May 2021) and the location of the debris flow and its contributing basin.

The upper Formazza Valley shows a North-South direction, and its morphology is driven by the glacial erosion with a typical U-shape. Near the village of Ponte Formazza, on the left flank of the valley, there are the basins of some small creeks (Enni and Rich) that contributed to the debris flow. We can identify three main sectors along the slope: (i) the low sector with a gentle gradient made by an alluvial fan and talus and rockfall accumulation; (ii) the middle sector 1500–2000 m located on the tectonic contact between Teggiolo formation and Antigorio formation, here the creek erosion isolated a cliff of a calcschist where a system of fractures separated several blocks prone to fall; (iii) the upper part of the slope (2000–2800 m) shows a glacial landform with the talus and periglacial deposits that cover the bedrock. The area involved in the June 2019 debris flow comprises the rockslide deposit located in the lower part of the slope and the bottom of the valley.

2.2. Previous Events: April 2009 Rockslide

The area of the 2019 debris flow was previously affected by several instability events; debris flows have already hit this area, as in August 1987 and in October 2000 [33], as reported in the Arpa Piemonte database, even if these were much less massive compared to the 2009 event. The geomorphological evidence from pre-2009 aerial photos suggests that the area was also periodically affected by large rockfalls.

The most massive event in recent time occurred on 9 April 2009, when a massive rockslide (Figure 2) created a large deposit that can be considered the main predisposing factor for the event that occurred in June 2019.

In 2009, the rock mass release area (R.S.A. in Figure 2) was located on a ridge at 1950 m elevation and oriented parallel to NE–SW striking steeply dipping faults. The initial failure likely occurred along such a fault, then the detached mass fell in a steep gorge on the north side of the cliff [34–36].

The rockslide mass moved quickly along the slope, which has an inclination of about 40° . The direction of the detached mass was about 210° with a drop height of 530 m over a horizontal distance of 600 m. The estimated total volume was $700,000 \text{ m}^3$. On 1 May 2009, a few days after the rockslide, a small shallow landslide affected the colluvial deposit where vegetation was eradicated (E.T. in Figure 2) [34].

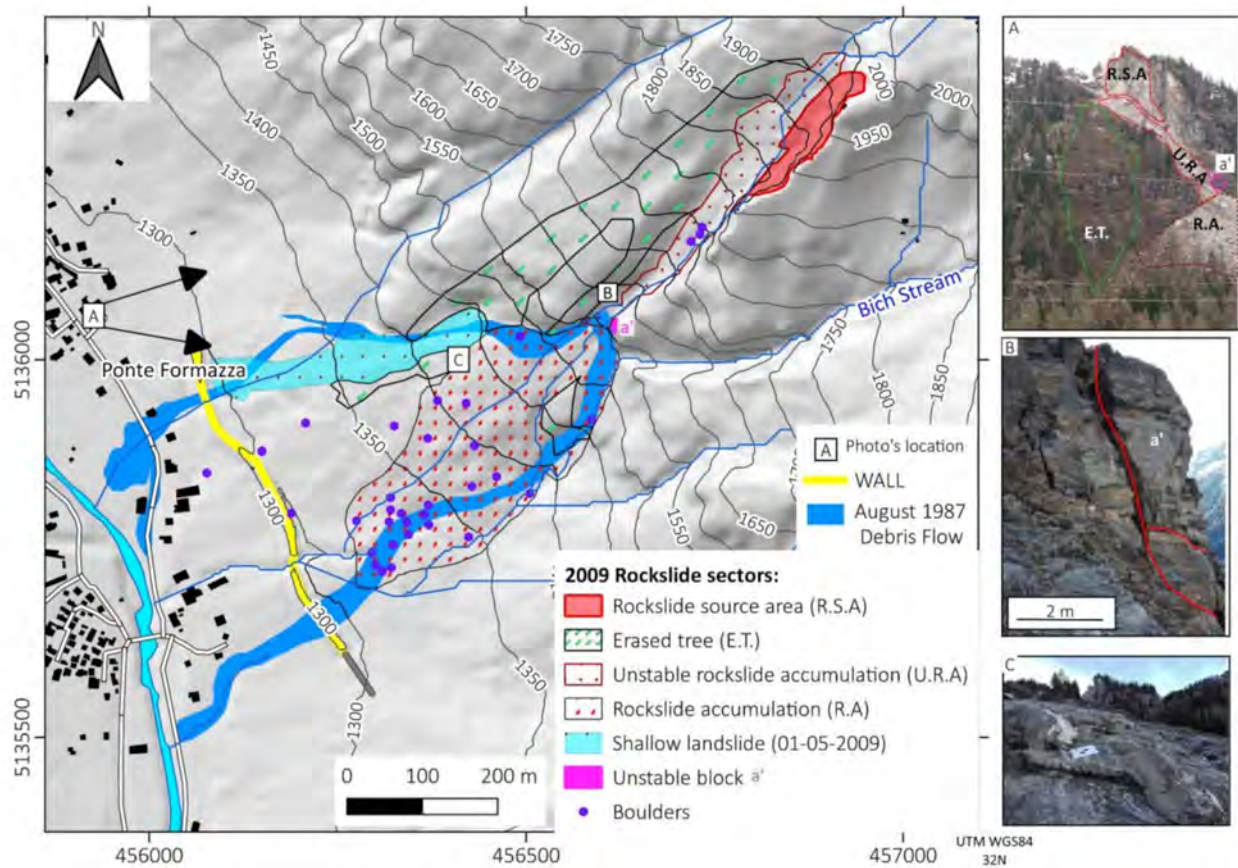


Figure 2. Map of April 2009 rockslide event and 1987 debris flow. Photo A shows a general view of the rockslide just after April 2009 (Photo Credit Colluccino M.) and the location of a'. Photo B shows a large ($10 \times 3 \text{ m}$) unstable block (a') in autumn 2017, which collapsed during the 2019 event. Photo C shows a marker used to fix RPAS photos placed on a large boulder of the rockslide.

The unstable rockslide accumulation (U.R.A. in Figure 2A), formed by some boulders of up to tens of metres in size, was partially blocked in a steep channel at the cliff base. This meta-stable deposit was massively moved by debris flow in June 2019. The field survey of 2017 also allowed us to detect an unstable block (a' in Figure 2B) that collapsed during the 2019 event.

From 2009 to 2019, the studied area was characterized only by limited rockfall detached from the unstable cliff or some movement of blocks of the rockfall deposit.

In November 2017 and May 2018, within a project funded by the Agency for the Informative System of Piemonte Region (CSI is the Italian acronym), we mapped the rockslide accumulation and part of the gorge close to the cliff using RPAS. These two surveys allowed us to acquire high-resolution DSMs and orthophotos to compare the pre-event morphology with the post-debris flow topography acquired in the 2019 survey.

3. Materials and Methods

The correct description of the 2019 debris flow requires the identification of the triggering and predisposing factors and the characterization of the effects of the slope

instability. For this reason, we collected rainfall and snow depth data to assess the triggering factors. We used satellite data to map the limit of the occurred debris flow and the known past events and the snow coverage. RPAS data of pre-event (2017 and 2018) and post-event (2019) were used to create high-resolution orthophoto and DSM of the studied area. We use these data to detect the geomorphological feature of debris flow and quantify the changes.

3.1. Meteorological Data

We collected meteorological data (rainfall and snow depth) from the Agency for Environmental Protection of Piemonte Region (ARPA is the Italian acronym) meteorological database [37], to understand the triggering factors of debris flow. The data come from the closest stations to Formazza (Figure 1A), located at a different altitude (Table 1). We first calculated the snowpack thickness in the contributing basin on the basis of: (i) the snow gauge data; (ii) Sentinel-2 images; (iii) the elevation from the Digital Terrain Model (DTM) of ARPA. Snow melting in early summer is an important parameter that has to be carefully considered because it could contribute to soil saturation. We also considered the nearest station data (Formazza Bruggi) to check the hourly peak rainfall that triggered the debris flow.

Table 1. The meteorological stations of ARPA Piemonte used for this work were also located in Figure 1.

Station Name	Parameters	ID	Distance from the Study Area	Elevation m. a.s.l.
Formazza Bruggi	Hourly and daily rainfall	1	3.5 km S	1226
Formazza Ponte	Snow depth	2	0	1300
Larecchio	Snow depth	3	18 km S	1860
Lago Vannino	Snow depth	4	5 km W	2177
Formazza	Snow depth	5	9 km NE	2450

3.2. Low-resolution Mapping and Snow Coverage Estimation

Before planning a detailed RPAS survey, we made a rapid mapping of the affected area using the Sentinel-2 images. In particular, we made a difference in the pre- and post- NDVI spectral index ($NDVI_{var}$) (Table 2). This approach can identify areas where vegetation was eradicated or covered by debris; using an approach similar to the one adopted to identify flooded areas [38,39], we identified the area covered by the debris flow deposit. The data of Sentinel-2 were also used to map the snow coverage before the debris flow event. We mapped the area affected by the rockslide in 2009 using the middle-high resolution orthophoto provided by Regione Piemonte. The data allowed mapping the detachment sector and part of the unstable rockslide accumulation (C.B. and U.R.A in Figure 2) that was not covered by RPAS flight (Table 2).

Table 2. Satellite and aerial images used in the study area.

Image Source	Spatial Resolution	Image Acquisition Date		Event Studied	Products Obtained
		Pre-Event	Post-Event		
Aerial Photo (Regione Piemonte)	0.5 m	2006	2010	2009 rockslide	Rockslide manual mapping
Sentinel-2	10 m	1 June 2019	16 June 2019	2019 debris flow	$NDVI_{var}$, Snow Coverage.

3.3. High-Resolution Mapping Strategy

The area affected by a rockslide in 2009 was mapped at very high resolution in November 2017, July 2018, and July 2019 (Table 3) with a Phantom 4 Pro UAV. The flights have been planned to acquire a detailed DSM of the accumulation sector and part of the gorge occupied by debris; due to its vertical position and the distance from the take-off point, it was impossible to reach and map the cliff source of the collapsed block.

Table 3. Very high-resolution RPAS dataset tested.

RPAS Model	Sector Covered	Flight Date	Photogrammetry Approach	Product Obtained
Phantom 4 Pro	S1, S1+S2	Nov. 2017 (pre-event)	Traditional (GCPs)	DSM, Orthophoto, points cloud
Phantom 4 Pro	S1, S1+S2	July 2018 (pre-event)	Traditional (GCPs)	DSM, Orthophoto, points cloud
Phantom 4 Pro	S1, S1+S2	July 2019 (post-event)	Traditional (GCPs)	DSM, Orthophoto, points cloud
Phantom 4 RTK	S2, S1+S2	July 2019 (post-event)	Traditional (GCPs) Direct (PCPs) & Mixed (GCPs+PCs)	Test of photogrammetry method precision DSM, Orthophoto, points cloud,

Considering these logistic limits, the area affected by 2019 debris flow was divided into two main parts (S1 and S2, in Figure 3) that partly overlap (S1+S2, in Figure 3).

The upper part of the slope (S1 and S1+S2 in Figure 3) was mapped by traditional RPAS and processed with SfM (Table 3). This sector was too dangerous for installing new GCPs, and we used only the two survived and five of the new GCPs located at the bottom of the surveyed area, in safe sectors. From processing, we obtained a DSM for most of the debris flow area used for the comparison with the pre-event dataset of 2017 and 2018.

The survey made in 2019 in the lower part of the slope (sectors S2 and S1+S2, in Figure 3) was done using a DJI PH4 UAV equipped with double-frequency GNSS receivers.

It was possible to use all the new 13 GCPs made of 50×50 cm² plastic square sharply visible in the RPAS photo (Figure 3C), which allowed us to test three different photogrammetry approaches (direct, traditional, and mixed). In direct photogrammetry (Figure 3A''), the coordinates of the Projection Center (PCPs) are used, these are obtained from data of onboard GNSS and the camera parameters (Table 4). The traditional photogrammetry uses the GCPs measured on the field (Figure 3A'). The mixed approach uses both types of coordinates. We obtained the DSM for the lower sector of the slope (S1 and S+2 in Figure 3) from these processings, which only partly overlap with the pre-event DSMs.

3.4. Mapping with RPAS: Processing Strategies in Emergency Cases

The dangerous and inaccessible conditions and the urgency to survey areas affected by landslide and debris flow phenomena led to using RPAS photogrammetry mapping. In these emergency cases, the most time-consuming and dangerous activity in the field is the positioning and measure of GCPs.

In 2017, we installed GCPs measured with GNSS on the area up to the cliff base for photogrammetric orientation of images.

Unfortunately, most of the GCPs installed for 2017–2018 flights were removed or covered by the debris flow, and only two markers installed on the stable cliff on the flank were still visible in July 2019.

Due to the greater extent of the debris flow in 2019 compared to 2018, the higher danger and the work in situ to make the safety of homes and the road, it was impossible to create and measure GCPs inside the landslide.

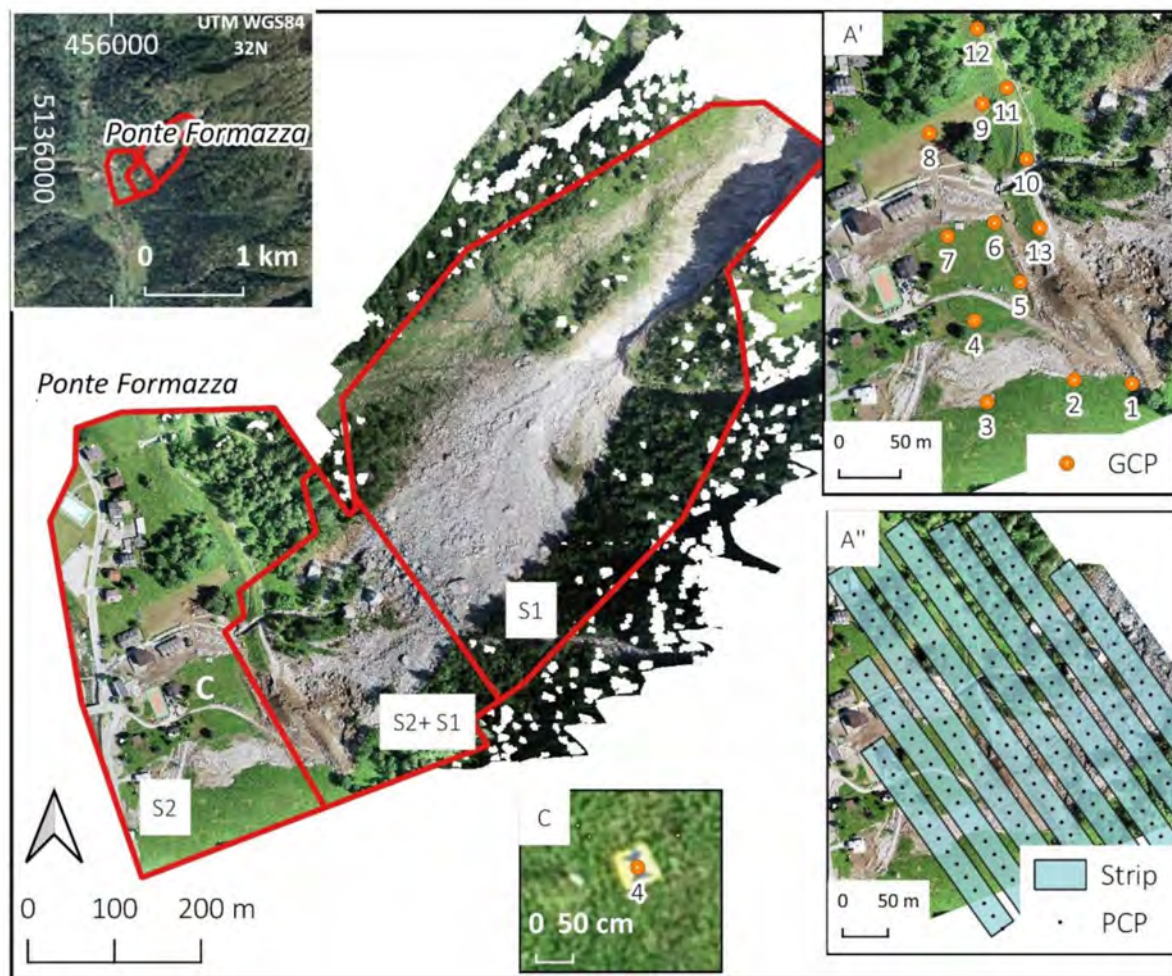


Figure 3. Area covered by 2019 RPAS survey. (S1) Higher sector, mapped by RPAS and processed with Structure from Motion. (S2) Lower sector mapped Rtk RPAS and processed with high-precision photogrammetry with two approaches (A') Traditional photogrammetric approach: GCPs location; (A'') Direct Photogrammetry approach: Projection Center Point (PCPs) coordinates. In S1+S2 the flights overlap. (C) Example of plastic GCP 50 × 50 cm (Marker004).

Table 4. Camera and flight parameter used in 2019 survey.

Camera	Sensor size and memory 1": 20 M pixel
	Pixel size = 2.4 μ m
RPAS Model	Principal distance = 8.8 mm (24 mm FF)
	DJI Phantom 4 RTK
Flight	Relative height average on the ground = 100 m
	Average scale of photos = 1:11300
	Ground Sample Dimension of 1 pixel (GSD) = 2.7 cm
	Number of photos: 246
	Ground size of photos 150 m × 100 m
	Coverage: along track 80%, across track 70%
Area Measured at ground	Flight time: 11 min mean speed = 7 m/s
	150,000 m ² 13 GCPs (50 × 50 cm size marker)

Even if they are quick and precisely re-measurable with GNSS, these points can be located only at the landslide area edges and not where the photogrammetry technique requires it. On the other hand, with the so-called “Direct Photogrammetry” theoretically, the ground-based measurements are unnecessary because the GNSS receiver installed onboard the aircraft provides the Projection Centers Point (PCP) positions and the inertial measurement unit (IMU) provides the camera’s angular assets. In both cases, however, these measurements require complex post-processing.

Unfortunately, the inertial instruments of adequate precision have weights and costs incompatible with small RPAS. For this reason, usually the information derived from the GNSS position of the PCPs is the only one used for the post-processing procedure. Adopting a high percentage of photographic coverage, the set of frames (called “block”) can be oriented in the cartographic reference system even without the precise but expensive inertial measurements.

The coordinates of the PCPs enter into a software called “aerial triangulation” (AT), which allows us to determine the angular asset of all the frames and provides statistical parameters to evaluate the precision of the procedure. Thus, it is possible to improve this accuracy by adding GCP measurements like in classical photogrammetry. The approach used a 2019 survey to combine the two techniques (“mixed approach”) to improve the accuracy and the reliability of the results.

The research activity aimed to find what could be a good compromise in these emergency cases. This compromise between precision, safety and speed consists in the use of all PCPs and a limited number of GCPs. For this purpose, the accuracies of the aerial triangulation calculations in some typical scenarios were evaluated and compared.

To achieve the survey to be sufficiently precise, i.e., a few cm, it is necessary that the coordinates of the PCPs also have similar accuracy and a mass-market GNSS receiver is insufficient for this purpose. It is mandatory to use a receiver that records the code and phase data to be processed in post-processing, such as the uBlox-F9P receiver. After the flight, the data must be treated with differential processing, i.e., also using the data of a second receiver close to the survey area. The post-processing software must also achieve the fixing of phase ambiguities to integer numbers.

The photogrammetric block was compensated with a reference both with GCPs and with PCs, analyzing different configurations.

The RPAS used, the DJI PH4 model, is equipped with a dual-frequency receiver to achieve this positioning accuracy. The GNSS antenna’s position was obtained with a one-second rate of acquisition with post-processed kinematic (PPK) methods [40], starting from a base station near the rockslide. Fixing of the integer phase ambiguity has been achieved with a formal precision always better than 1 cm in the three coordinates. In turn, the base station position coordinates have been obtained with a static relative positioning in the ETRF2000 system, assured by the correct use of GNSS permanent stations network “SPIN.” (<https://www.spingnss.it/spiderweb/frmIndex.aspx> accessed on 2 May 2021).

The positions of the PCPs at the instant of the shooting were obtained with two subsequent calculations. The phase center of the GNSS antenna does not coincide with the center of the camera, and the opening instant does not coincide with the exact second position of the antenna already computed

First, a temporal interpolation of the phase center’s position was done to bring it backward or forward to the instant of shooting. The camera center position was then obtained from the phase center by correcting the known spatial eccentricity between the two centers. The eccentricity vector, called lever arm, was then rotated in the ground reference system, knowing the aircraft attitude’s angular values. For this purpose, the low precision of the drone’s onboard IMU is sufficient due to the distances of a few centimeters. Even an angular error of 3° makes it possible to carry out this operation with centimeter accuracy. Therefore, the camera centers’ position and accuracy do not depend solely on the accuracy of the GNSS antenna phase centers, and coordinates and accuracy enter together in the aerial triangulation procedure.

Traditional, Direct and Mixed Photogrammetry Techniques Using an SfM Software

The adopted aerial triangulation software used is part of the Agisoft Metashape™ suite that also performs the dense images matching. Agisoft Metashape™ is probably one of the most famous Structure for Motion software (SfM). Usually, the products of this software are the digital surface model (DSM) and orthophoto. These results are obtained with a so-called dense matching, i.e., the output of correlation, pixel by pixel of digital images.

All the SfM software are working with a series of routines that, in order, perform these tasks:

- Finding homologous points, named key points, in all photograms.
- Performing the relative orientation of the images (also named camera frames orientation).
- Performing the absolute orientation of the block of photograms with some measures (GCPs and/or PCPs). This part is classically named “Aerial Triangulation” (AT).
- Building the dense cloud.
- Building of mesh and texture.
- Building of DSM, DTM, and Orthophoto.

In this paper, we present several tests conducted in the AT phase of the adopted SfM software. Tests aim to identify the most accurate results that we could obtain in the AT phase limiting the number of GCPs. We defined different scenarios, and we evaluated the accuracy obtained in AT that determine the accuracy of the final products (orthophotos and DSM). The AT procedure also provides the estimate of the metric characteristics of the camera (internal orientation of camera and distortions of the optic). This estimation is necessary, in particular with cameras like the one placed on the used RPAS that cannot be considered a professional camera, and therefore, it has non-negligible optical distortions. If it is not possible to evaluate accurately the mathematical parameters that model these distortions, the frames would be unusable for metric purposes. The estimation occurs together with the camera orientation parameters during the AT. The final result is usually conditioned by the presence of a high number of constraints (known coordinate points) in the photogrammetric block. The known coordinates points are made of GCPs and the PCPs of the images sequence.

To evaluate the amount of degradation of the accuracy due to the scarcity of measurement points on the ground of the AT process, we considered three different scenarios:

1. Traditional photogrammetry: Using Ground Control Points only (GCPs).
2. Direct photogrammetry: the use of Projection Centre Points (PCPs).
3. Mixed approach: the use of both PCPs and a variable number of GCPs (from one up to 13).

To compare the results and evaluate the volumetric and precision differences, we considered the third scenario (with all PCPs and GCPs) as the more precise reference. In intermediate scenarios, the differences between the unused points' coordinates and those obtained from AT have been evaluated (Check Points—CKP).

Both GCPs and PCPs enter in AT with their weight, i.e., their accuracy. Planimetric accuracy of 1 cm and an altimetric accuracy of 3 cm were achieved and established for the GCPs. For PC, a planimetric accuracy of 3 cm and an altimetric accuracy of 5 cm were used.

The configurations are summarised in Table 5. In Case 1, the AT uses only the GCPs. In Case 2, only the PCPs are used. The other cases are mixed solutions with all the PCPs and with a variable number of GCPs.

Table 5. Various kinds of known coordinates and their number (n.) in the AT calculation.

Cases	Kind of Adjustment	n. GCP	n. CKP	n. PCP
Case 1	Aerial Triangulation with only 9 GCPs	9	4	0
Case 2	Direct Photogrammetry: i.e., use only PCPs	0	13	246
Case 3a	Mixed solution–minimal Case: use only 1 GCP	1	12	246
Case 3b	Mixed solution–intermediate case: use 3 GCPs	3	10	246
Case 3c	Mixed solution–complete Case use all 13 GCPs	13	0	246

3.5. Volume Estimation and Geomorphological Mapping of the Debris Flow

The volume changes for the sectors S1 and S1+S2 (Figure 3) were obtained by a DSM of difference computed in QGIS software. Specifically, we first divided the debris flow into different sectors avoiding the areas covered by vegetation. In a second step, we multiplied the area of these sectors for the average variation of elevation (DEM of difference) to obtain volume change. We calculated the volume variation using the 2019 and 2017 DSM, which shows a more overlapping area than the 2018 DSM.

For the lower part of debris flow (sector S2 in Figure 3) covered only by the 2019 RPAS Rtk survey (A), we evaluated the volume with a different methodology that is made of three steps, made with Agisoft Metashape™ software:

- we first cut out from DSM the area covered by debris (Figure 4B);
- we proceeded to interpolate the clipped part to reconstruct the surface before the event (Figure 4C);
- we calculated the difference between the original raw DSM and the reconstructed DSM pre-event. This allowed us to estimate the volume also of this sector (see Figure 8A in the results).

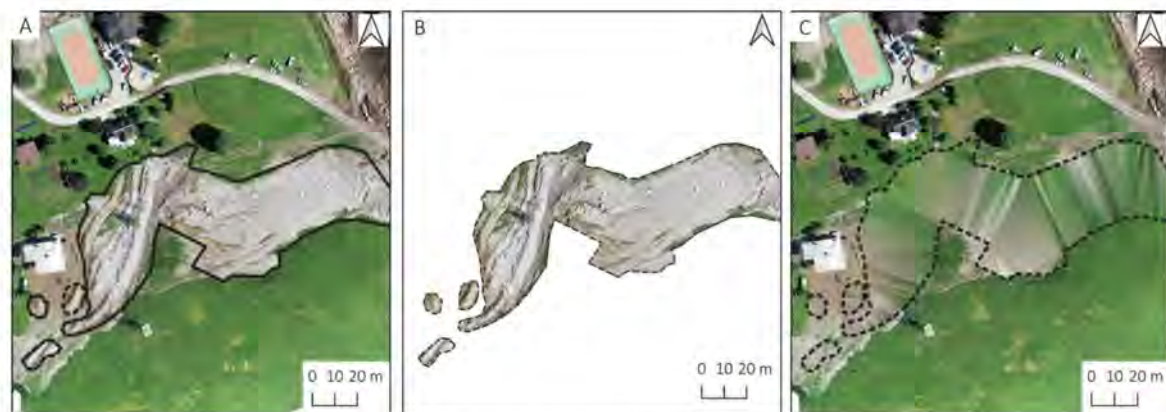


Figure 4. (A) Lower sector interested by debris flow; (B) clipped low-energy debris flow; (C) interpolated DSM that fill the clipped part.

A more precise volume estimation was also made by removing the vegetation on both pre- and post-event DSM, using a manual clipping. Then, using interpolation, the data gaps were filled.

Using the results obtained from SfM and volume change estimation, we used QGIS to map debris flow boundary and geomorphological sectors manually. The high-resolution DSM and orthophoto were also used to define the shape of the 2009 rockslide better and estimate the size of the most massive boulders.

The pre- and post-event DSM difference was used to compute the volume changes in different sectors and measure the size of some large boulders mobilized by debris flow. Using Qgis2threejs Plugin [41] for QGIS, we create a 3-D view that helps the detailed

analysis of the deposits that we could not reach with field surveys. The use of 3D also helped reconstruct the event dynamic and trajectories of some most massive boulders.

4. Results

The main results of the 2019 debris flow analysis are shown in the following paragraphs.

4.1. Meteorological Analysis of the 2019 Event

The debris flow was triggered by intense rainfall on 10–11 June 2019, with accumulated rainfall of 100 mm in 24 h and a peak of 25 mm/h (Figure 5B). These values are not extreme for the area; however, they occurred in the period of intense snow-melting that probably saturated the soil (Figure 5A). From the data of snow depth of the nearby stations and the Sentinel-2 images of 01 June 2019 (Figure 6B), it is possible to estimate snow depth and coverage at the moment of triggering rainstorm (Figure 6A). Half of the basin that contributed to debris flow was covered by snowpack that in the highest sector (>2500 m) reached about 200 cm of thickness. From the end of May 2019, the snowpack starts a rapid melting at 8 cm/days. All these factors contributed to soil saturation at the moment of the storm.

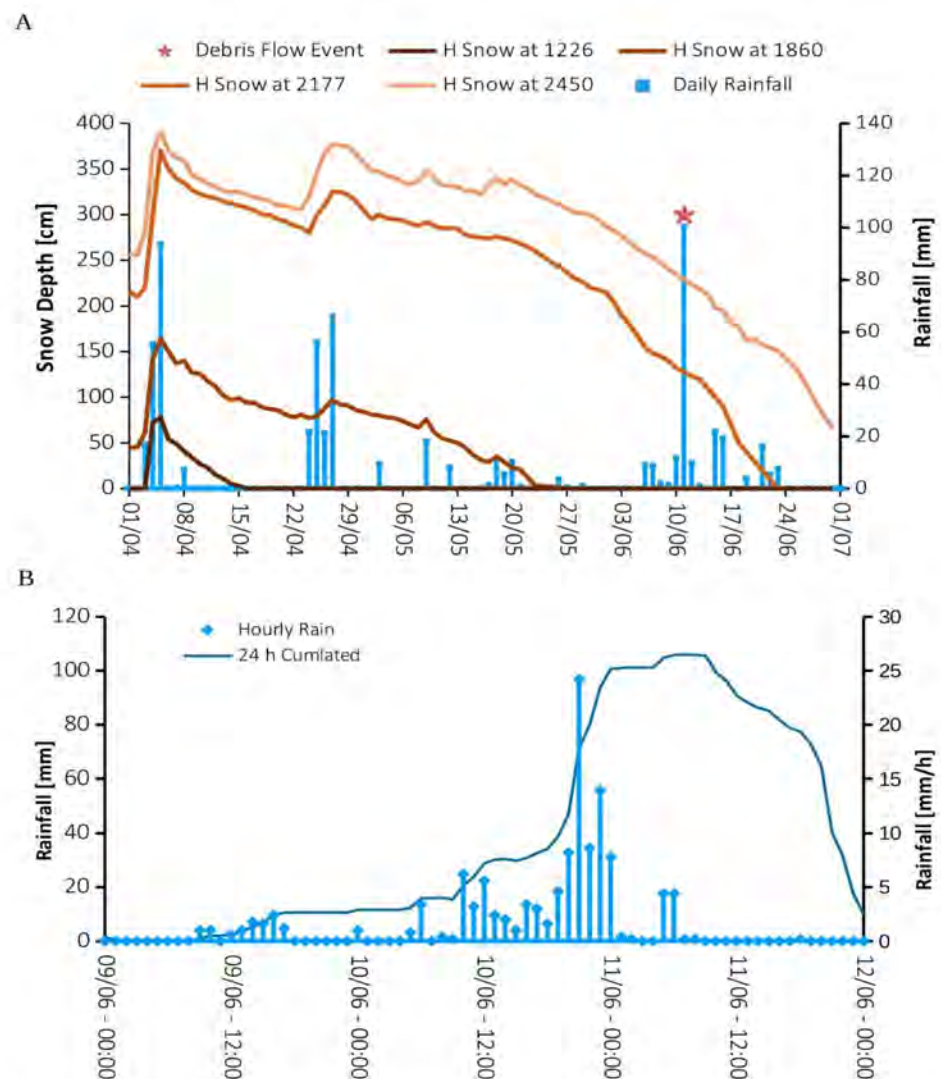


Figure 5. (A) Daily rainfall and snow depth at a different elevation from 1 April to 30 June 2019. (B) Hourly and cumulated precipitation at Formazza Bruggi rain gauge from 9 June 2019 00 UTC to 12 June 2019 00 UTC.

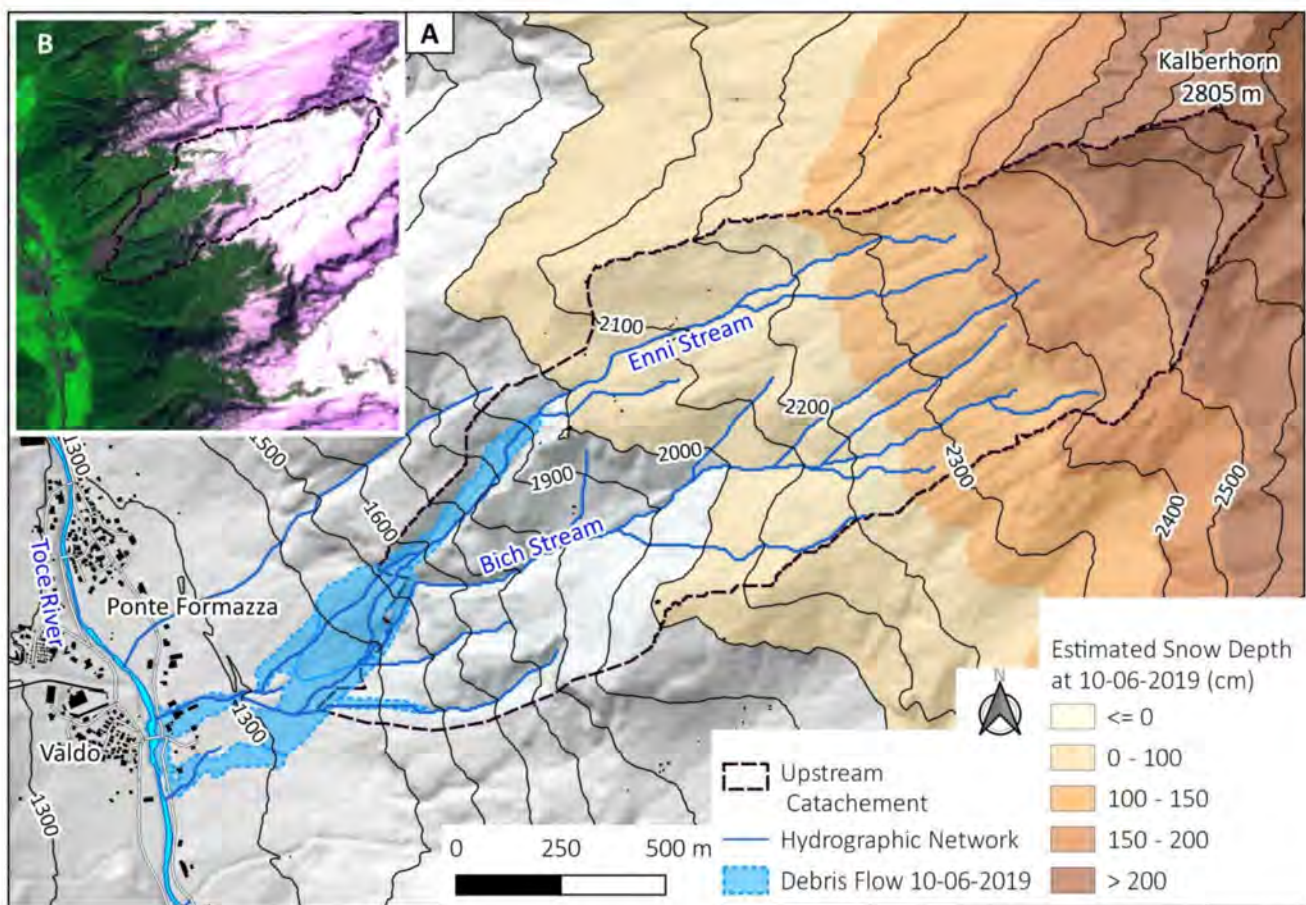


Figure 6. (A) The contributing watershed basin upstream from the debris flow area and estimated snow depth and coverage at the moment of the storm (10–11 June 2019) based on snow depth data, Sentinel-2 images and DTM data. (B) Sentinel-2 image acquired on 1 June 2019.

Data from ARPA Piemonte [42] show that a peak of rainfall of about 15 mm in 10 min observed from RADAR data could be the final trigger of the debris flow. The rainfall that triggered the debris flow is coherent with several intensity/duration thresholds in the literature [43–45].

The main difference with previous debris flow events in this area, as the events of 1987 and 2000, is the massive amount of new debris released by the 2009 rockslide that became part of the debris flow mass. In particular, the rockslide accumulation that holds the canyon of the Enni stream represented an important source of material, and it could have temporally dammed the creek. The creation of a small temporary lake and its sudden collapse could amplify the magnitude of the debris flow and the volume of deposits involved in the event [42]. Besides, the vibration and the movement caused by debris flow contributed to the detachment of the large unstable block (a' in Figure 2) that rolled and bounced until a distance of 30 m to the base of the wall.

4.2. Low-Resolution Mapping

Low and medium spatial resolution images characterize the rockslide that occurred in 2009 and the 2019 debris flow. The combined study of these two events is fundamental as the rockslide created favorable conditions for the subsequent debris flow activation.

We first mapped the rockslide (Figure 2) using aerial images of ARPA Piemonte (Table 2) and on the basis of field surveys made by [34,35].

The processing of Sentinel-2 images (Figure 7A,B) allowed us to map the area affected by debris flow in 2019 quickly. Thanks to the first post-event images available a few

days after the event, the affected area map helped plan RPAS flights made on 2 July 2019. Moreover, the upper part of the debris flow was mapped only with Sentinel-2 and ground-based photos because this sector is too far from the RPAS take-off point.

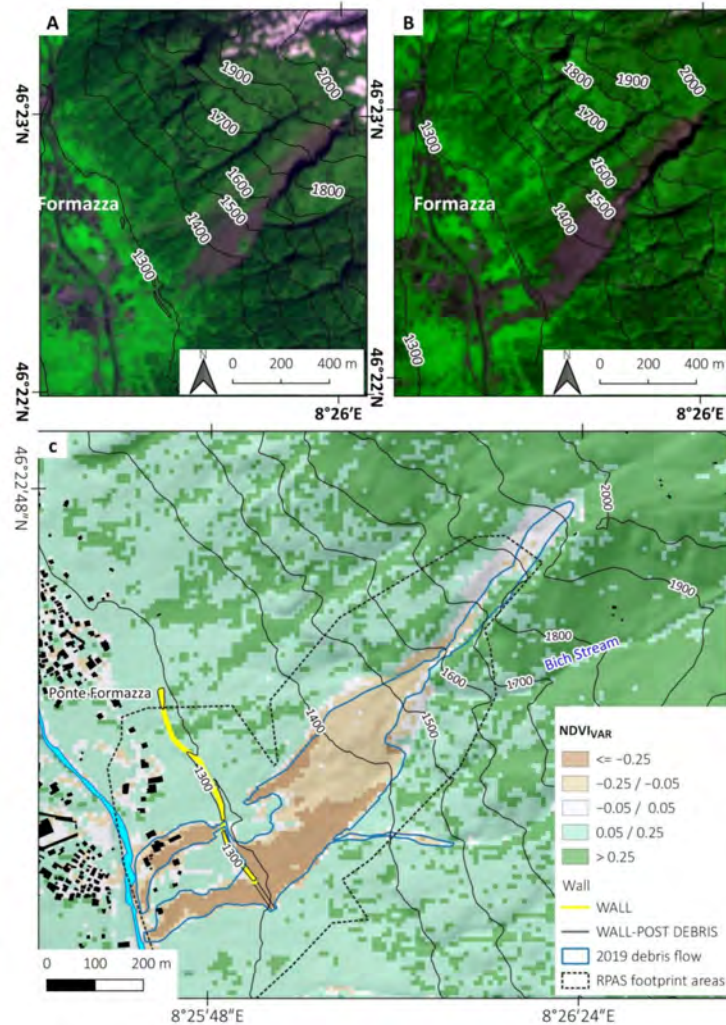


Figure 7. Low-Resolution debris flow mapping made with Sentinel-2 data. (A) Pre-event image 1 June 2019; (B) Post-event image 16 June 2019; (C) $NDVI_{var}$ map and the boundaries of debris flow furtherly mapped with RPAS

Figure 7C shows the $NDVI_{var}$ perfectly matching the boundary of the debris flow area furtherly mapped with RPAS, especially in the bottom deposits sector. It is also possible to see that the decrease of NDVI is higher in the lower sector of the slope where vegetation was erased. The areas already occupied by debris and boulder of the 2009 event show a negative $NDVI_{var}$ because the debris flow buried pioneer vegetation of the 2009 rockslide deposits.

As reported in the previous paragraph, the Sentinel-2 images also allowed mapping the snow coverage area.

4.3. High-Resolution Mapping Results

In this section is presented the results of the high-resolution mapping of debris flow based on RPAS data.

4.3.1. SfM for DSM and Orthophoto Production

For the upper part of the slope (S1 and S1+S2 in Figure 3), we processed images of 2017, 2018, and 2019 using the SfM technique (using Agisoft Metashape™) to obtain point clouds DSMs, and orthophotos. The software also gives a report about the precision and accuracy of elaboration, time, and processing parameters. We tested several processes in order to obtain the most accurate results.

Table 6 resumes the main characteristic of the RPAS acquisitions. It is possible to see that RMSE is within 2 cm on the plane and within 5 cm, including the vertical component. These values are accurate enough to map the topography variations (in the order of several meters) after the 2019 debris flow.

Table 6. SfM processing of RPAS data: resume of the orthophotos and DSM spatial resolution and accuracy.

RPAS Model	Date	Area Covered km ²	GCPs Count	RMSE (cm)				Image (Pixel)	Pixel Size (m)	
				X (East)	Y (North)	Z (Height)	Total		Orthophoto	DSM
Ph4 pro	Nov-17	0.188	11	2.08	1.52	1.60	3.03	0.45	0.02	0.05
Ph4 pro	Jul-18	0.218	9	0.67	1.37	1.58	2.19	0.22	0.02	0.05
Ph4 pro	Jul-19	0.264	7(2)	1.51	1.40	4.60	5.04	0.62	0.05	0.05

The obtained results from the flight of 2019 show a higher RMSE related to the GCP distribution. As mentioned before, for the 2017 and 2018 flights, the GCPs used were almost the same and equally distributed in the affected areas, while for the 2019 flight, only two were surveyed, and the other new seven are located on the lower part.

4.3.2. Accuracy Results in SfM Software for the Aerial Triangulation Cases

In the S1+S2 sector, we tested different photogrammetric approaches using the 2019 survey. To verify the accuracy of the AT, even with a very low number of ground measurements, some elaborations have been carried out corresponding to three cases. These cases are indicated in Table 5. The results obtained are reported in Table 7. Recall that the accuracy of the digital terrain and volume calculations largely depend on these preliminary operations.

Table 7. Statistical summary of case residuals.

Residuals Mean and Standard Deviation	Residuals on CKP			Residuals on GCP		
	n° of CKP	Plan (cm)	h (cm)	n. GCP	Plan (cm)	h (cm)
Case 1	4	3.1 ± 2.1	−3.8 ± 1.8	9	1.3 ± 0.7	−0.1 ± 3.3
Case 2	13	3.8 ± 1.6	5.9 ± 10.1	0		
Case 3a with 1 GCP M_5	12	3.7 ± 1.5	6.8 ± 10.1	1		
Case 3a with 1 GCP M_13	12	1.9 ± 1.4	2.8 ± 10.4	1		
Case 3b	10	1.9 ± 0.8	4.7 ± 7.5	3	2.4 ± 4.9	4.9 ± 13.8
Case 3c	0			13	1.6 ± 1.0	1.6 ± 8.7

The obtained results show that the direct photogrammetry solution (Case 2), if not supported by precise CPs measurements, is less accurate than the traditional (Case 1) and mixed approaches. In particular, the mixed one requires only 3 GCPs (Case 3b) for obtaining a good accuracy (planar residuals about 2 cm and vertical 5 cm). The best result is obtained using the whole 13 GCPs (Case 3c).

We propose a detailed description of each case and the obtained residuals with graphical representation in the Supplementary Material (Figures S1 and S2).

4.3.3. DSM and Volume Accuracy in the Lower Sector of Landslides

As shown in the previous section, case 3c is the solution we used for the official DSM creation and volume calculation. However, we also used solution 3b to evaluate how the higher residual effectively affected the volume estimation.

We first computed the volume difference between the 2019 DSM created with cases 3c and 3b for the whole areas covered by the RPAS survey. The results show a difference of 3112 m³ over an area of 114,226 m², corresponding to an average elevation difference of 2.7 cm. This difference is less than the expected bias, usually 2–3 times the ground sampling distance, GSD.

After we computed the effective volume changes caused by the landslides using the DSM of 2018 for comparison, we removed vegetation and buildings from both DSMs to have an effective digital terrain model (DTM) of difference and a more realistic volume change.

The results Figure 8A show that the volume of accumulated material is respectively 30,909 m³ (Case 3b) and 31,064 m³ (Case 3c). The difference between direct photogrammetry with only 3 GCPs and full solution (3c) is about 720 m³ (2.4%); this is excellent accuracy results for geomorphological analysis. It is possible to appreciate that the excavators were also removed from the volume computation.

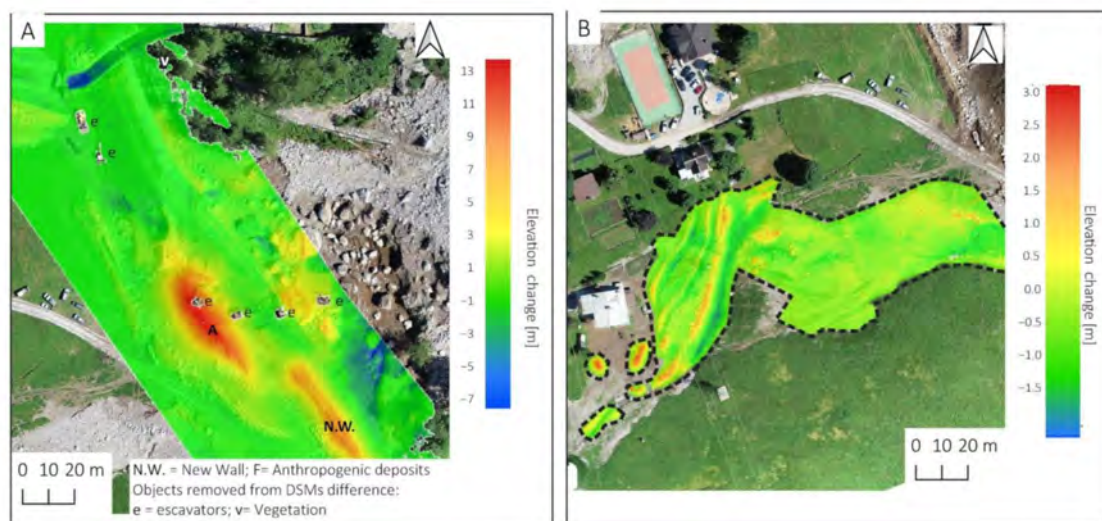


Figure 8. (A) DTM of difference (2018–2019) of the wall sector, the volume of accumulated materials is 31,064 m³ (Case 3c). (B) Low-energy debris flow sector DTM of difference made with clipping and interpolation of 2019 DSM (estimated volume 155 m³).

Using the methodology described in paragraph 3.4, we calculated the DTM of change and the volume for the low-energy sector of the debris flow (Figure 8B) where there is no available 2018 data (12s in Figure 13). In this case, the estimated cumulated volume is about 155 m³, a modest amount compared with the rest of the debris flow volume (described in Section 4.3.4).

4.3.4. Rockslide and Debris Flow Volume Estimation and Mapping Based on SfM

The High-resolution RPAS surveys carried out in 2017 and 2018 allowed to obtain an extremely detailed orthophoto (Figure 9A,B) and DSM of the rockslide accumulation (Figure 9C). The 3-D views allowed us to measure and estimated the volumes of large boulders as on the field. It is interesting to note how most of the GCPs installed in 2017 are still well visible in the 2018 orthophoto (e.g., Figure 9A',B').

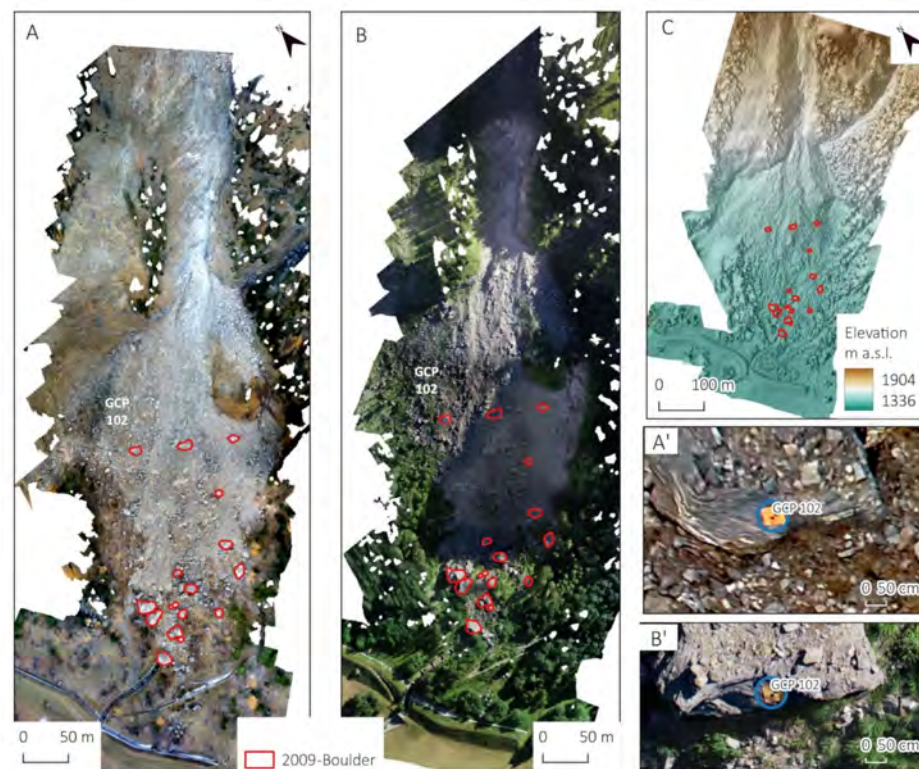


Figure 9. High-resolution orthophoto of 2009 rockslide deposits made with RPAS in November 2017 (A) and July 2018 (B), a detailed zoom view on GCP 102 in 2017 (A') and 2018 (B'). In panel (C) the 2017 DSM made with SfM used for the comparison with the 2019 post-event DSM.

The difference between UAV DSM 2018 and UAV DSM 2017 did not show significant values ($DMS_{var} < 10$ cm, Table 8). This is in agreement with the fact that no significant event occurred during the period. The main noise is related to vegetation or shadow areas created by some blocks. The low 2018–2017 DSM difference a confirmation of the excellent quality of geocoding obtained with SfM.

Table 8. DSM Elevation change 2017–2018 (cm) for the GCPs installed.

GCP id	DSM _{VAR}	GCP id	DSM _{VAR}
GCP 106	6.71	GCP 110	−2.39
GCP 100	19.20	GCP 111	−11.13
GCP 101	9.22	GCP 103	23.14
GCP 102	−2.27	GCP 112	−10.33
GCP 108	−6.84	GCP 104	0.11
GCP 109	30.97	GCP 105	16.21

The orthophoto and DSM obtained from the SfM allowed us to compare the change that occurred after the June 2019 debris flow.

The orthophoto allowed a precise mapping of most debris flows (Figure 10A), especially in the lower part, and at the downslope of the wall. Here the relatively low-energy flow created fine-sized debris deposits (from the decimetric block to the sand matrix). Some UAV footage available on the Local Team web video platform [46] shows the debris flow deposit just a few hours after the event. The videos helped to understand some depositional patterns of the restored area at the moment of our RPAS flight 15 days later.

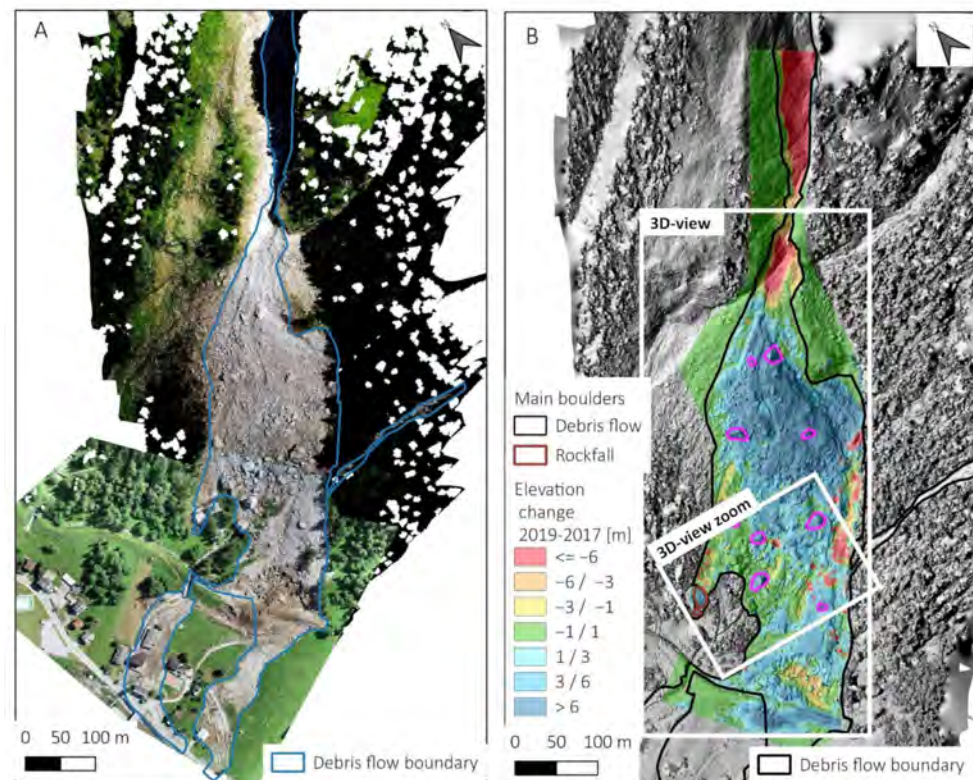


Figure 10. 2019 event (A) UAV post-event orthophoto with the boundary of the debris flow; (B) DSM change (2019–2017) draped on the hillshade model and the most massive boulders mobilized during the 2019 event.

The difference between DSM 2019 and 2017 allowed us to understand the complexity of the processes during the 2019 event (Figure 10B). The main events and their geomorphological evidence can be resumed as follows: (i) The canyon of Enni Stream was utterly washed out of the 30 m thickness of debris and boulders, and now the bedrock is not covered by rockslide deposits; (ii) the giant block a' that was positioned at the top of the fan fall down during the 2019 event following a linear trajectory independent from the rest of debris flow; (iii) most of the debris mass was deposited in the middle sector of the slope, here it is possible to see how the Enni stream migrated from the central part of the fan to the left sector joining the Rich stream; (iv) a sector characterized by the presence of a heterogeneous deposit composed by large blocks in a coarse-grained matrix due to the debris flow transport effect and the rolling component of the movement of unstable rock blocks; (v) the contribution of Rich stream energy and water to the lower sector of the debris flow that accumulated 10 m of materials behind the wall built after the 2009 rockslide; (vi) part of debris flow overpassed the wall, and the rest get around the wall and reached the main Toce river, with two separate branches. These flows hit several buildings, roads, and some sports facilities. The relatively low-energy debris flow avoided more severe damage to buildings, and the few residents were evacuated some minutes before, avoiding life risk.

In the general 3D view (Figure 11), it is possible to detect the area of erosion in the upper part of the channel, the detachment on the large boulders (a'), and its trajectory until its final position (a''). The main accumulation (m.a.) is located at an altitude of 1500 m. In the lower part of the slope, the debris flow shows the fine-size of the blocks (i.a.), and the restoration work moved part of this debris (l.a.e) to make a new section of the wall (a.a.).

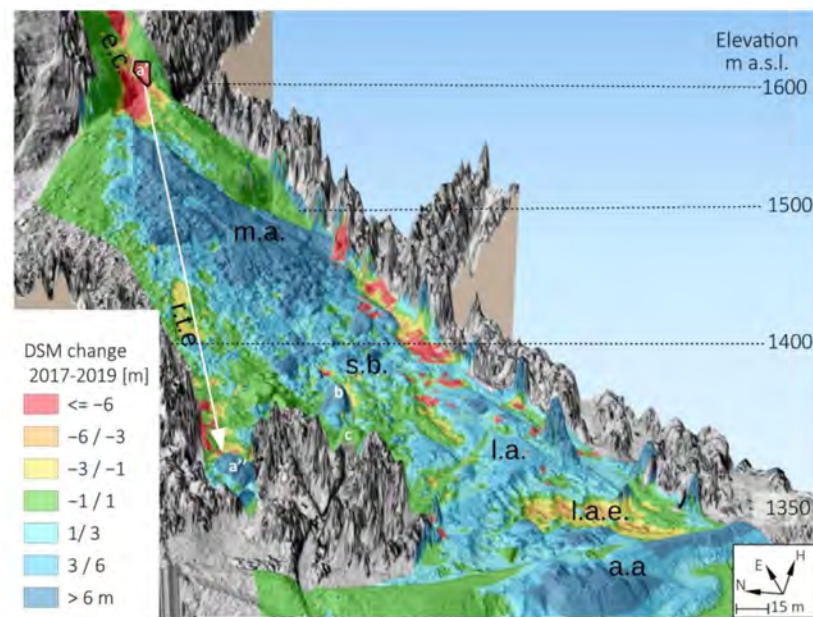


Figure 11. 3-D shadow model of the affected area with DSM change 2019-2017 draped on. It is possible to detect: the erosion channel (e.c.); the collapsed block (a'), its rolling/bounce erosion trace (r.t.e.) and its final position (a''); the main accumulation (m.a.); the area with large sparse boulders (s.b.); the lower accumulation (l.a.) partially excavated (l.a.e); the anthropogenic accumulation (a.a.).

In Figure 12, a 3D view of the areas with the largest boulders is represented with more detail. It is interesting to note how the DSM difference allowed us to distinguish the boulder “c” that is part of the 2009 rockslide, from the block a” derived from the new detachment and the rest of the boulders like “b” that is part of the debris flow.

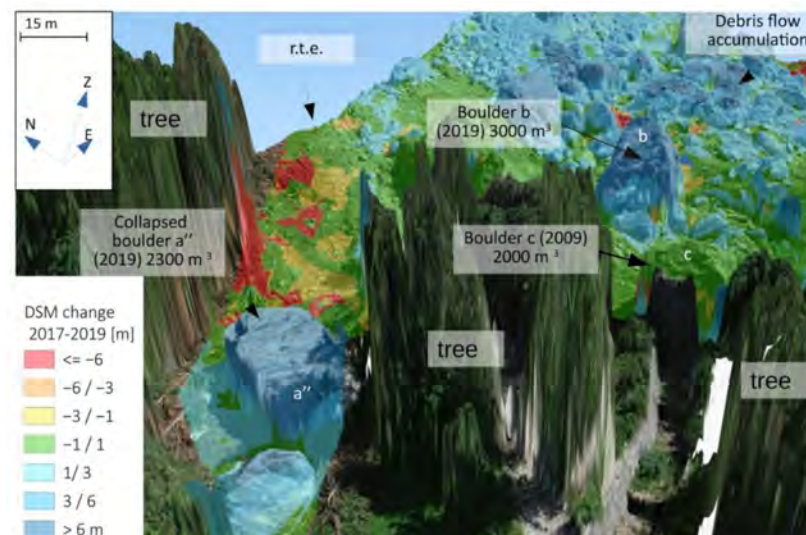


Figure 12. A detailed 3d view of the accumulation. It is possible to detect the most massive boulders from 2009 (c with no change in DSM difference) and 2019 events (a'' and b). The areas covered by trees are excluded from DSMs differences.

4.4. Geomorphological Interpretation

We finally produced a geomorphological map of the 2019 event (Figure 13) based on the orthophoto, 3D view, and 2019–2017 DSM differences (Table 9). We mapped four main geomorphological groups of sectors:

- Erosion sectors (red/violet colors in Figure 13). Here it is possible to find the eroded channel (1) (source of most of the material mobilized; the area of the detachment of the block a') (2) and the erosion caused by its rolling and bounce (4 a/b); a small area of erosion (3) on the left side of the rockslide deposit related to debris flow action increased by the Bich stream.
- A small transit sector (5) where erosion and deposits are balanced (orange color in Figure 13). Another transit sector is the lateral debris flow (12) that increased the energy for the middle section of the slope.
- Deposition sectors (green colors in Figure 13). Most of the debris was deposits in the middle sector of the slope just after the channel (6) at 1400 m a.s.l. Just below this deposit, we can find a dispersed accumulation where most of the boulders stopped (about 211,000 m³) (7); the lower sector of the slope (under 1350 m) is characterized by middle energy deposits blocked by the wall (8) and partly removed by remedial work in July 2019 (8b). Part of the removed material was used to build a new section of the wall (10). On the right side of the accumulation, we can also find the collapsed boulder a'' (2000 m³) that stopped about 30 m from the wall (9).
- Low-energy sectors (cyan colors in Figure 13). A small portion of debris flow overpassed the wall for these deposits (11). We calculated the volume for the 's' portion (155 m³) with the method described in Section 3.5 and showed in Figure 8B.

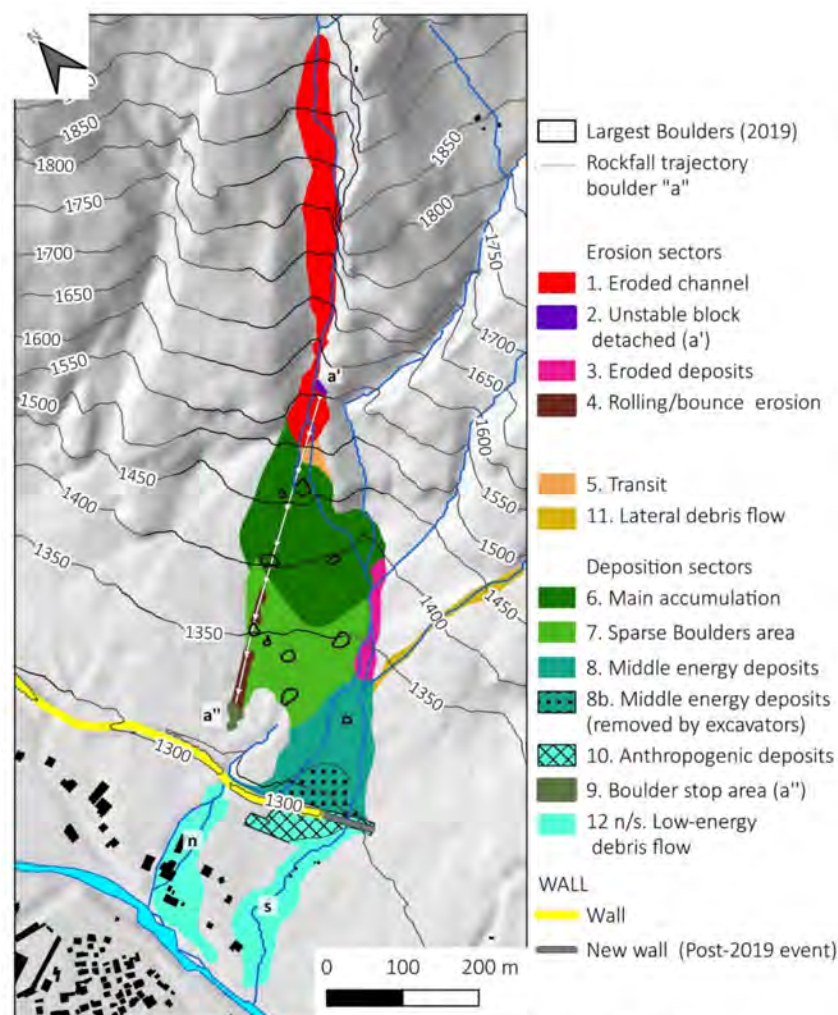


Figure 13. Geomorphological sectors of 2019 debris flow and rockfall.

Table 9. Geomorphological sectors DSM elevation and volume changes from 2017 to 2019.

Sector	ID	Area m ²	DSM _{VAR} (2019–2017)		Volume Change m ³
			Mean (m)	St. dev.	
Eroded channel	1	18,799	−11.00	11.80	−206.8 × 10 ³
Boulder “a” detach point	2	116	−10.32	6.57	−1.2 × 10 ³
Eroded deposits	3	2887	−5.66	7.81	−16.4 × 10 ³
Rolling/bounce erosion	4a	487	−1.40	0.69	−0.681 × 10 ³
Rolling/bounce erosion	4b	1172	−4.21	8.77	−4.94 × 10 ³
Transit	5	1023	0.32	0.94	0.327 × 10 ³
Main accumulation	6	28,235	7.48	4.63	211.2 × 10 ³
Sparse Boulders area	7	18,483	2.13	3.72	39.4 × 10 ³
Middle energy deposits removed	8b	4641	1.13	2.86	5.3 × 10 ³
Middle energy deposits	8	12,974	1.86	4.86	24.1 × 10 ³
Boulder “a” stop point	9	438	6.42	3.36	2.81 × 10 ³
Anthropogenic accumulation	10	4581	4.57	2.97	20.9 × 10 ³
Lateral debris flow	11	2357	No data	No data	No data
Low-energy debris flow	12 n	10,329	No data	No data	No data
Low-energy debris flow	12 s	10,587	The volume was calculated with the interpolation method (0.155 × 10 ³ m ³)		

5. Discussion

In this paper, we analyzed the evolution of the slope located between the Enni and Bich streams in the Ponte Val Formazza municipality. This area has been affected by different gravitational processes in the last decade. In particular, the rockslide that occurred in 2009 created a large chaotic deposit mobilized during the intense rainfall event in 2019 that caused a large debris flow. Different remote sensing solutions (satellite and RPAS datasets) supported a detailed analysis of the evolution that characterized the slope evolution. The particular condition of the studied area after the event occurred in 2019 makes the presented case study a good example of the strategy that could be adopted for the acquisition of a high-resolution dataset in a dangerous environment. After the event, the direct accessibility to a large part of the slope was limited by unstable blocks, and the RPAS survey has been planned considering these limitations. The availability of an RPAS equipped with double-frequency GNSS receivers allowed us to test and compare different post-processing techniques.

In particular, we found that the direct photogrammetry solution, if not supported by precise PCPs measurements, is less accurate than the mixed one, but the accuracies are acceptable with minimum support of only 3 GCPs. The internal calibration parameters of the camera are: (i) the focal distance f (more correctly called “main distance”), (ii) the position of the main point within the frame (c_x , c_y in Table 10), and (iii) a variable number of parameters of a polynomial indicated by K_i , through which the radial distortion is modeled. Other distortion parameters can also be calculated, which are not essential for the explanation here. The result of the calculation of these parameters is visible in Table 10 for cases 3-c and 3-a.

From the comparison of the two sets of parameters, we can draw some considerations. The precision with which they are estimated is very similar, except for the principal distance, which is more affected by the different configuration of the constraint points. In the case of complete support, it goes from 0.31 μm to 0.11 μm , and the two values of the principal distance are significantly different.

Table 10. Calibration parameters obtained from Case 3c (using all GCPs) and Case 3a-13 (one GCP). Value (m = main distance; σ = precision).

		f (μm)	c_x (μm)	c_y (μm)	K1	K2	K3	K4
Case 3-c PC + 13 GCP	$m=$	8757.480	−8.277	16.434	−0.653	0.295	−0.128	0.029
	$\sigma=$	0.113	0.046	0.038	5.04×10^{-5}	1.65×10^{-4}	2.01×10^{-4}	8.33×10^{-5}
Case 3-a PC + 1 GCP	$m=$	8742.528	−8.532	16.309	−0.651	0.293	−0.127	0.029
	$\sigma=$	0.312	0.046	0.038	6.82×10^{-5}	1.67×10^{-4}	1.99×10^{-4}	8.16×10^{-5}

The differences in the position of the principal point are within $0.26 \mu\text{m}$ (about $1/9$ of a pixel). Even calculating the radial distortion with the K_i coefficients in the two cases shows that the difference between the configuration with full and minimum support of GCP does not exceed $0.27 \mu\text{m}$ (about $1/9$ of a pixel).

Instead, we can observe a significant variation $\Delta f = 15 \mu\text{m}$ of the principal distance. It involves a change in altitude in altitude $\Delta H = n\Delta f = 17 \text{ cm}$, where n indicates the inverse of the frame's average scale. On the ground level (Table 10), a variation Δf implies a planimetric variation of 2.6 cm , comparable to the GSD value.

Therefore, the number and configuration of GCPs are helpful to improve the estimation of the reference system scale, which is the main effect due to the variation of the principal distance. Thus, a single GCP is not sufficient, but at least three are required for a sufficiently correct estimate of the focal length.

The calculation scenarios described were also used to obtain various DSMs, which are the most important product obtained from dense photogrammetry. Therefore, the real comparison concerns the differences found in the landslide volumes obtained in the various calculation cases already discussed. The most accurate reference used is the digital surface model obtained from Case 3-c. The precision reached by Case 3-c could be used to detect the slight ground variation and estimate the volume and debris removal cost.

For the geomorphological study of such large events, the accuracy and precision reached by the photogrammetry techniques and SfM are very good both for DSM creation and volume estimation.

The use of RPAS data associated with the SfM technique has shown many advantages and some limitations for the study of this complex and large debris flow.

The availability of pre- and post-event RPAS data allowed reconstructing the elevation and volume variations for most of the affected area.

The very high resolution obtained from orthophoto and DSM allowed the study of the debris flow deposits like in a field survey, without safety risk (area with unstable blocks and affected by rockfall). Moreover, the 3D view and DSM change were useful to understand the dynamics of some blocks that created a path with bounce and rolling.

On the other hand, the main limitation of this RPAS survey is the limited area that could be covered (mainly for legal limitation to their distance and flight height). These regulations limited the survey of the upper part of the slope ($>500 \text{ m}$ of vertical distance) and vertical cliff.

The gap in acquisition could be covered by a flight made from the upper part for the slope, but it would have required a long time hiking to reach the point of RPAS deployment. A terrestrial laser scanner (TLS) or helicopter LIDAR to supply this lack of data needs a budget far higher than RPAS surveys. In our case study, we used the satellite data of Sentinel-2 and the comparison of ground photos taken from the bottom slope to fill the gap of RPAS flight.

Focusing on the event of 10–11 June 2019, it is not ordinary debris flow for its dynamics but a more complicated process that involved several mechanisms and kinematic not so commonly found in the literature. The rockslide deposits in the channel were triggered by water flow, and then it started to move under gravitational kinematics with a roll and bounce movement. These also triggered a rockfall of a block ($a' > a''$) with its independent

trajectory. Finally, the lower part of the mass moved to show a more flow-based mechanism also implemented by a liquid contribution of Bich and other small creeks. The wall projected to protect the village of Ponte Formazza from another rockslide failed to contain this type of landslide. The debris flow deposit reached the same height of the wall (about 10 m) and, in some points, overpassed it. The older structures built to protect from debris flow (e.g., after the 1987 event) are several orders of volume below the capacity to retain the volume (about 50,000 m³) of material that reached the wall in June 2019.

6. Conclusions

We tested the potentiality of advanced photogrammetry techniques and structure from motion (SfM) based on RPAS data in this work. We applied these techniques to study the debris flow that affected Ponte Formazza village (NW Alps) in June 2019. The collected data supported a better definition of the predisposal, preparatory, and trigger causes of the occurred event.

The meteorological and Sentinel-2 data analysis shows that the debris flow was triggered by an intense rainfall event (the registered peak of precipitation was 25 mm/h) that occurred during the most intense snow melting period of the year. The massive amount of debris and boulders inside a steep gorge is derived from a rockslide deposit. The rockslide occurred in 2009 and its deposit can be considered the most crucial predisposal factor of this event.

After the debris flow, we made a RPAS survey and we used the acquired material for a detailed mapping of the complex debris flow and rockfall that occurred in June 2019 in upper Formazza Valley (NW Alps). The availability of two surveys done in 2017 and 2018 allowed a detailed comparison of pre- and post-event topography.

The event affected an area of 0.4 km², with an elevation range of 600 m representing a technical limit for many RPAS flights. Unfortunately, these limitations did not allow us to map the highest altitude sector study areas. The low-resolution mapping made with Sentinel-2 data and ground photos allowed us to supply the area of debris flow (7%) not reached by RPAS.

The post-event photogrammetric RPAS survey allowed us to make a precise and rapid mapping of hazard areas and test different photogrammetric approaches. We found that a mixed approach, based on the direct photogrammetry (PCPs) and at least 3 GCPs, allowed us to reach a centimetric accuracy almost the same as traditional photogrammetry that uses a dense network of GCPs. This approach also allowed us to obtain precise orthophotos and DSM volume variations (2.4% of difference compared to traditional photogrammetry). RPAS data processed with SfM allowed us to obtain very-high resolution orthophoto and DSMs for most of the debris flow, with a satisfactory accuracy (5 cm RMSE). This result is significant for the use of RPAS in emergency conditions when the use of GCPs could often represent a critical element of the survey.

The obtained data supported the precise mapping of 2019 debris flow deposits and helped us to understand the dynamics, volume and trajectory followed by massive boulders (up to 2000 m³). The good precision of pre- and post-DSM allowed us to precisely estimate the volume changes (about 300,000 m³), including the anthropic restoration that occurred between the event and the flight (July 2019). Using the very high-resolution data obtained with mixed photogrammetry methods, we also calculated the volume of the low part of the debris flow note covered by pre-event DSM by applying a clipping and interpolation.

We used the 3D views created with GIS to make a virtual field trip on the deposits in a potentially dangerous area and measure the most massive boulders included some blocks of the 2009 rockslide.

These results confirm that the RPAS surveys could be an accurate, safe, and affordable solution to map and quantify changes in small areas and limited relief energy affected by geological processes. The areas with a high elevation range, however, still need a different mapping methodology.

Simultaneously, the integration of RPAS data with low-resolution images and ancillary data is still fundamental to understand the kinematic of the processes in a multidisciplinary approach.

Supplementary Materials: The supplementary materials are available online at: <https://www.mdpi.com/article/10.3390/rs13091797/s1>

Author Contributions: Conceptualization, D.N. and D.G.; methodology, D.N., D.G., A.M and A.C.; software, D.G., A.C., P.M., and D.N.; validation, A.C., P.M. and A.M.; formal analysis, A.C., A.M.; investigation, D.N.; hardware (GNSS and RPAS), P.M., I.H.B. and A.M.; data acquisition and curation, P.M., A.C., I.H.B. and D.N.; writing—original draft preparation, D.N.; writing—review and editing, D.N., D.G., A.M and A.C.; visualization, D.N.; supervision, D.G.; project administration, A.C., D.G.; funding acquisition, A.C. All authors have read and agreed to the published version of the manuscript.

Funding: This research was funded by CSI Piemonte (<https://www.csipiemonte.it/en>) in the project “Attività di ricerca e sviluppo sulle tecnologie e strumenti della geomatica per il monitoraggio di versanti in dissesto e infrastrutture (research and development activities on technologies and instruments of geomatics for the monitoring of landslides and infrastructures).”

Data Availability Statement: Rainfall and Snow Depth data are available on ARPA Piemonte: <http://www.arpa.piemonte.it/dati-ambientali/dati-meteoidrografici-giornalieri-richiesta-automatica> (accessed on 2 May 2021); Sentinel-2 images are available on: <https://scihub.copernicus.eu/> (accessed on 2 May 2021); The Geological map of the area is available on https://webgis.arpa.piemonte.it/Geoviewer2D/index.html?config=other-configs/geologia250k_config.json <https://scihub.copernicus.eu/> (accessed on 2 May 2021); 5-m DTM of Regione Piemonte and aerial photos are available on <http://www.geoportale.piemonte.it/geocatalogorp/index.jsp> (accessed on 2 May 2021).

Acknowledgments: The authors would thank ARPA Piemonte for the meteorological data and the post-event report; Maurilio Coluccino (Provincia di Verbania, Regione Piemonte) for the logistic support, the photos and the ancillary data of the 2009 rockslide.

Conflicts of Interest: The authors declare no conflict of interest.

References

- Giordan, D.; Adams, M.S.; Aicardi, I.; Alicandro, M.; Allasia, P.; Baldo, M.; De Berardinis, P.; Dominici, D.; Godone, D.; Hobbs, P. The Use of Unmanned Aerial Vehicles (UAVs) for Engineering Geology Applications. *Bull. Eng. Geol. Environ.* **2020**, *79*, 3437–3481. [[CrossRef](#)]
- Giordan, D.; Hayakawa, Y.; Nex, F.; Remondino, F.; Tarolli, P. The Use of Remotely Piloted Aircraft Systems (RPASs) for Natural Hazards Monitoring and Management. *Nat. Hazards Earth Syst. Sci.* **2018**, *18*, 1079–1096. [[CrossRef](#)]
- Daakir, M.; Pierrot-Deseilligny, M.; Bossier, P.; Pichard, F.; Thom, C. UAV Onboard Photogrammetry and GPS Positioning for Earthworks. *Int. Arch. Photogramm. Remote Sens. Spat. Inf. Sci.* **2015**, *40*, 293. [[CrossRef](#)]
- Forlani, G.; Dall’Asta, E.; Diotri, F.; di Cella, U.M.; Roncella, R.; Santise, M. Quality Assessment of DSMs Produced from UAV Flights Georeferenced with On-Board RTK Positioning. *Remote Sens.* **2018**, *10*, 311. [[CrossRef](#)]
- Chiabrande, F.; Lingua, A.; Piras, M. Direct Photogrammetry Using UAV: Tests and First Results. *Int. Arch. Photogramm. Remote Sens. Spat. Inf. Sci.* **2013**, *1*, 81–86. [[CrossRef](#)]
- Zhang, H.; Aldana-Jague, E.; Clapuyt, F.; Wilken, F.; Vanacker, V.; Oost, K.V. Evaluating the Potential of Post-Processing Kinematic (PPK) Georeferencing for UAV-Based Structure-from-Motion (SfM) Photogrammetry and Surface Change Detection. *Earth Surf. Dyn.* **2019**, *7*, 807–827. [[CrossRef](#)]
- Godone, D.; Allasia, P.; Borrelli, L.; Gullà, G. UAV and Structure from Motion Approach to Monitor the Maierato Landslide Evolution. *Remote Sens.* **2020**, *12*, 1039. [[CrossRef](#)]
- Cignetti, M.; Godone, D.; Wrzesniak, A.; Giordan, D. Structure from Motion Multisource Application for Landslide Characterization and Monitoring: The Champlas Du Col Case Study, Sestriere, North-Western Italy. *Sensors* **2019**, *19*, 2364. [[CrossRef](#)]
- Lucieer, A.; de Jong, S.M.; Turner, D. Mapping Landslide Displacements Using Structure from Motion (SfM) and Image Correlation of Multi-Temporal UAV Photography. *Prog. Phys. Geogr.* **2014**, *38*, 97–116. [[CrossRef](#)]
- Rossi, G.; Tanteri, L.; Tofani, V.; Vannocci, P.; Moretti, S.; Casagli, N. Multitemporal UAV Surveys for Landslide Mapping and Characterization. *Landslides* **2018**, *15*, 1045–1052. [[CrossRef](#)]
- Mateos, R.M.; Azañón, J.M.; Roldán, F.J.; Notti, D.; Pérez-Peña, V.; Galve, J.P.; Pérez-García, J.L.; Colomo, C.M.; Gómez-López, J.M.; Montserrat, O.; et al. The Combined Use of PSInSAR and UAV Photogrammetry Techniques for the Analysis of the Kinematics of a Coastal Landslide Affecting an Urban Area (SE Spain). *Landslides* **2016**, *14*, 743–754. [[CrossRef](#)]

12. Keilig, K.-P.; Dietrich, A.; Krautblatter, M. Comparison of Multi-Temporal Elevation Models of a Debris-Flow Channel. In Proceedings of the IAEG/AEG Annual Meeting Proceedings, San Francisco, CA, USA, 2018; Springer: Berlin/Heidelberg, Germany, 2019; Volume 1, pp. 275–282.
13. Liu, C.-C.; Chen, P.-L.; Matsuo, T.; Chen, C.-Y. Rapidly Responding to Landslides and Debris Flow Events Using a Low-Cost Unmanned Aerial Vehicle. *J. Appl. Remote Sens.* **2015**, *9*, 096016. [[CrossRef](#)]
14. Stumpf, A.; Malet, J.-P.; Kerle, N.; Niethammer, U.; Rothmund, S. Image-Based Mapping of Surface Fissures for the Investigation of Landslide Dynamics. *Geomorphology* **2013**, *186*, 12–27. [[CrossRef](#)]
15. Giordan, D.; Manconi, A.; Tannant, D.D.; Allasia, P. UAV: Low-Cost Remote Sensing for High-Resolution Investigation of Landslides. In Proceedings of the 2015 IEEE International Geoscience and Remote Sensing Symposium (IGARSS), Milan, Italy, 26–31 July 2015; pp. 5344–5347.
16. Fernández, T.; Pérez, J.L.; Cardenal, J.; Gómez, J.M.; Colomo, C.; Delgado, J. Analysis of Landslide Evolution Affecting Olive Groves Using UAV and Photogrammetric Techniques. *Remote Sens.* **2016**, *8*, 837. [[CrossRef](#)]
17. Al-Rawabdeh, A.; He, F.; Moussa, A.; El-Sheimy, N.; Habib, A. Using an Unmanned Aerial Vehicle-Based Digital Imaging System to Derive a 3D Point Cloud for Landslide Scarp Recognition. *Remote Sens.* **2016**, *8*, 95. [[CrossRef](#)]
18. Peterman, V. Landslide Activity Monitoring with the Help of Unmanned Aerial Vehicle. *Int. Arch. Photogramm. Remote Sens. Spat. Inf. Sci.* **2015**, *40*, 215. [[CrossRef](#)]
19. Hsieh, Y.-C.; Chan, Y.-C.; Hu, J.-C. Digital Elevation Model Differencing and Error Estimation from Multiple Sources: A Case Study from the Meiyuan Shan Landslide in Taiwan. *Remote Sens.* **2016**, *8*, 199. [[CrossRef](#)]
20. Jakob, M.; Hungr, O.; Jakob, D.M. *Debris-Flow Hazards and Related Phenomena*; Springer: Berlin/Heidelberg, Germany, 2005; Volume 739.
21. Tiranti, D.; Crema, S.; Cavalli, M.; Deangeli, C. An Integrated Study to Evaluate Debris Flow Hazard in Alpine Environment. *Front. Earth Sci.* **2018**, *6*, 60. [[CrossRef](#)]
22. Ciurean, R.L.; Hussin, H.; Van Westen, C.J.; Jaboyedoff, M.; Nicolet, P.; Chen, L.; Frigerio, S.; Glade, T. Multi-Scale Debris Flow Vulnerability Assessment and Direct Loss Estimation of Buildings in the Eastern Italian Alps. *Nat. Hazards* **2017**, *85*, 929–957. [[CrossRef](#)]
23. Nikolopoulos, E.I.; Borga, M.; Marra, F.; Crema, S.; Marchi, L. Debris Flows in the Eastern Italian Alps: Seasonality and Atmospheric Circulation Patterns. *Nat. Hazards Earth Syst. Sci.* **2015**, *15*, 647–656. [[CrossRef](#)]
24. Beniston, M.; Stoffel, M. Rain-on-Snow Events, Floods and Climate Change in the Alps: Events May Increase with Warming up to 4 C and Decrease Thereafter. *Sci. Total Environ.* **2016**, *571*, 228–236. [[CrossRef](#)] [[PubMed](#)]
25. Gariano, S.L.; Guzzetti, F. Landslides in a Changing Climate. *Earth Sci. Rev.* **2016**, *162*, 227–252. [[CrossRef](#)]
26. Turkington, T.; Remaître, A.; Ettema, J.; Hussin, H.; van Westen, C. Assessing Debris Flow Activity in a Changing Climate. *Clim. Chang.* **2016**, *137*, 293–305. [[CrossRef](#)]
27. Giorgi, F.; Torma, C.; Coppola, E.; Ban, N.; Schär, C.; Somot, S. Enhanced Summer Convective Rainfall at Alpine High Elevations in Response to Climate Warming. *Nat. Geosci.* **2016**, *9*, 584–589. [[CrossRef](#)]
28. Allen, S.K.; Rastner, P.; Arora, M.; Huggel, C.; Stoffel, M. Lake Outburst and Debris Flow Disaster at Kedarnath, June 2013: Hydrometeorological Triggering and Topographic Predisposition. *Landslides* **2016**, *13*, 1479–1491. [[CrossRef](#)]
29. Baer, P.; Huggel, C.; McArdell, B.W.; Frank, F. Changing Debris Flow Activity after Sudden Sediment Input: A Case Study from the Swiss Alps. *Geol. Today* **2017**, *33*, 216–223. [[CrossRef](#)]
30. Hürlimann, M.; Coviello, V.; Bel, C.; Guo, X.; Berti, M.; Graf, C.; Hübl, J.; Miyata, S.; Smith, J.B.; Yin, H.-Y. Debris-Flow Monitoring and Warning: Review and Examples. *Earth Sci. Rev.* **2019**, *199*, 102981. [[CrossRef](#)]
31. Adams, M.S.; Fromm, R.; Lechner, V. High-Resolution Debris Flow Volume Mapping with Unmanned Aerial Systems (UAS) and Photogrammetric Techniques. *Int. Arch. Photogramm. Remote Sens. Spat. Inf. Sci.* **2016**, *41*. [[CrossRef](#)]
32. Piana, F.; Fioraso, G.; Irace, A.; Mosca, P.; d’Atri, A.; Barale, L.; Falletti, P.; Monegato, G.; Morelli, M.; Tallone, S. Geology of Piemonte Region (NW Italy, Alps–Apennines Interference Zone). *J. Maps* **2017**, *13*, 395–405. [[CrossRef](#)]
33. Tropeano, D.; Luino, F.; Turconi, L. Evento Alluvionale Del 14-15 Ottobre Nell’Italia Nord-Occidentale. Fenomeni Ed Effetti. *Geam Torino* **2000**, *37*, 203–216.
34. Coluccino, M. *Fenomeno Franoso del 19.04.2009 Lungo il rio Rich, Versante Sinistro Idrografico Della Val Formazza, a Monte Della Località Ponte (Comune di Formazza, VCO). Rapporto di Valutazione Geologica Preliminare a Seguito del Sopralluogo del 21.04.2009*; Provincia del Verbano: Verbania, Italy, 2009.
35. Boldrini, N. *Studio, Caratterizzazione e Valutazione Qualitativa della Pericolosità della Frana di Crollo di Formazza (Località Ponte/Valdo, VB)*; Milano Bicocca: Milano, Italy, 2010.
36. Dammeier, F.; Guilhem, A.; Moore, J.R.; Haslinger, F.; Loew, S. Moment Tensor Analysis of Rockslide Seismic Signals. *Bull. Seismol. Soc. Am.* **2015**, *105*, 3001–3014. [[CrossRef](#)]
37. Accesso Ai Dati Annali Meteorologici Ed Idrologici Banca Dati Meteorologica. Available online: https://www.arpa.piemonte.it/rischinaturali/accesso-ai-dati/annali_meteoidrologici/annali-meteo-idro/banca-dati-meteorologica.html (accessed on 6 May 2020).
38. Notti, D.; Giordan, D.; Caló, F.; Pepe, A.; Zucca, F.; Galve, J. Potential and Limitations of Open Satellite Data for Flood Mapping. *Remote Sens.* **2018**, *10*, 1673. [[CrossRef](#)]

39. Giordan, D.; Notti, D.; Villa, A.; Zucca, F.; Calò, F.; Pepe, A.; Dutto, F.; Pari, P.; Baldo, M.; Allasia, P. Low Cost, Multiscale and Multi-Sensor Application for Flooded Area Mapping. *Nat. Hazards Earth Syst. Sci.* **2018**, *18*, 1493–1516. [CrossRef]
40. Gabrlik, P.; la Cour-Harbo, A.; Kalvodova, P.; Zalud, L.; Janata, P. Calibration and Accuracy Assessment in a Direct Georeferencing System for UAS Photogrammetry. *Int. J. Remote Sens.* **2018**, *39*, 4931–4959. [CrossRef]
41. Qgis2threejs Plugin Document—Qgis2threejs Plugin 2.4 Documentation. Available online: <https://qgis2threejs.readthedocs.io/en/docs/> (accessed on 22 July 2020).
42. ARPA Piemonte. *RAPPORTO EVENTO 11/06/2019 Colata Detritica nel Comune di Formazza*; ARPA Piemonte: Turin, Italy, 2019; p. 28. Available online: <https://www.arpa.piemonte.it/pubblicazioni-2/relazioni-tecniche/analisi-eventi/eventi2019/rapportoformazza.pdf> (accessed on 22 July 2020).
43. Segoni, S.; Piciullo, L.; Gariano, S.L. A Review of the Recent Literature on Rainfall Thresholds for Landslide Occurrence. *Landslides* **2018**, *15*, 1483–1501. [CrossRef]
44. Guzzetti, F.; Peruccacci, S.; Rossi, M.; Stark, C.P. The Rainfall Intensity–Duration Control of Shallow Landslides and Debris Flows: An Update. *Landslides* **2008**, *5*, 3–17. [CrossRef]
45. Palladino, M.R.; Viero, A.; Turconi, L.; Brunetti, M.T.; Peruccacci, S.; Melillo, M.; Luino, F.; Deganutti, A.M.; Guzzetti, F. Rainfall Thresholds for the Activation of Shallow Landslides in the Italian Alps: The Role of Environmental Conditioning Factors. *Geomorphology* **2018**, *303*, 53–67. [CrossRef]
46. Local Team Frana a Formazza, Case Raggiunte. Il Drone in Volo Sulla Colata—Local Team. Available online: <https://www.localteam.it/video/frana-a-formazza-case-raggiunte-il-drone-in-volo-sulla-colata> (accessed on 3 July 2020).