

Travelling with MoMoWo

Original

Travelling with MoMoWo / Garda, EMILIA MARIA - In: MoMoWo: 100 Works in 100 Years. European Women in architecture and Design. 1918-2018 / Ana María Fernández García, Caterina Franchini, Emilia Garda, Helena Seražin. - ELETTRONICO. - Ljubljana - Torino : France Stele Institute of Art History ZRC SAZU - Politecnico di Torino, 2016. - ISBN 978-961-254-922-0. - pp. 89-89

Availability:

This version is available at: 11583/2650697 since: 2020-01-31T16:37:40Z

Publisher:

France Stele Institute of Art History ZRC SAZU - Politecnico di Torino

Published

DOI:

Terms of use:

This article is made available under terms and conditions as specified in the corresponding bibliographic description in the repository

Publisher copyright

default_conf_editorial [DA NON USARE]

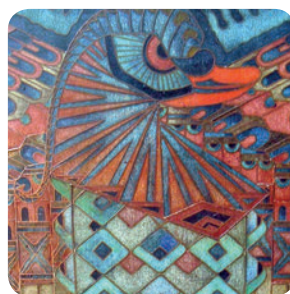
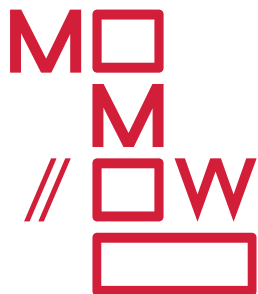
-

(Article begins on next page)



MoMoWo - 100 WORKS IN 100 YEARS

EUROPEAN WOMEN IN ARCHITECTURE AND DESIGN - 1918-2018



Co-funded by the Creative Europe Programme of the European Union



Ljubljana - Torino

MoMoWo · 100 Works in 100 Years

European Women in Architecture and Design · 1918-2018

Edited by Ana María FERNÁNDEZ GARCÍA, Caterina FRANCHINI, Emilia GARDA, Helena SERAŽIN

MoMoWo Scientific Committee:

POLITO (Turin Italy)	Emilia GARDA, Caterina FRANCHINI
IADE-U (Lisbon Portugal)	Maria Helena SOUTO
UNIOVI (Oviedo Spain)	Ana Mária FERNÁNDEZ GARCÍA
LU (Leiden The Netherlands)	Marjan GROOT
ZRC SAZU (Ljubljana Slovenia)	Helena SERAŽIN
UGA (Grenoble France)	Alain BONNET
SiTI (Turin Italy)	Sara LEVI SACERDOTTI

English language editing by

Marta Correias Celorio, Alberto Fernández Costales, Elizabeth Smith Grimes

Design and layout by

Andrea Furlan ZRC SAZU, Žiga Okorn

Published by

France Stele Institute of Art History ZRC SAZU, represented by Barbara Murovec
Issued by Založba ZRC, represented by Oto Luthar

Printed by

Agit Mariogros, Beinasco (TO)

First edition / first print run: 3000

Ljubljana and Turin 2016

© 2016, MoMoWo

© 2016, Založba ZRC, ZRC SAZU, Ljubljana



Co-funded by the
Creative Europe Programme
of the European Union



<http://www.momowo.eu>

Publication of the project MoMoWo - Women's Creativity since the Modern Movement
This project has been co-funded 50% by the Creative Europe Programme of the European Commission

This publication reflects the views only of the authors, and the Commission cannot be held responsible for any use which may be made of the information contained therein.

This book was published on the occasion of the MoMoWo traveling exhibition *MoMoWo · 100 Works in 100 Years · European Women in Architecture and Design · 1918-2018*, which was first presented at the University of Oviedo Historical Building, Spain, from 1 July until 31 July 2016. The Exhibition's further stops are: Lisbon (September 2016), Grenoble (November 2016), Amsterdam (March 2017), Ljubljana (April 2017) and Turin (June 2017)

MoMoWo Travelling Exhibition, Oviedo

Curator

Ana María Fernández García

Assistant curator

Esther Rodríguez Ortiz

Exhibition design by

Brezo Rubín and Pelayo Álvarez

MoMoWo Partnership



Universidad de
Oviedo



Universiteit Leiden



With the Patronage of



MOMOWO TEAMS

POLITO Team

Margherita BONGIOVANNI
Carlo CALDERA
Elena DELLAPIANA
Francesco FIERMONTE
Caterina FRANCHINI
Emilia GARDA
Mario GROSSO
Marcella GUY
Guido MONTANARI
Laura OTTONELLO
Fernanda PIZZOCCARO
Daniela SCUGLIA
Chiara SERRA
Annalisa STELLA
Federica VOCI

IADE-U Team

Rita BOTO
José Ferro CAMACHO
Eduardo CÔRTE-REAL
Carlos DUARTE
Emília DUARTE
Márcia GOMES
Catarina LISBOA
Pedro RODRIGUES
Sílvia ROSADO
Marta SANTOS
Susana SANTOS
Maria Helena SOUTO

UNIOVI Team

Marta DÍAZ FERNÁNDEZ
Alberto FERNÁNDEZ COSTALES
Ana María FERNÁNDEZ GARCÍA
Esther RODRÍGUEZ ORTIZ
Sara VÁZQUEZ CANÓNICO-COSTALES

LU Team

Marjan GROOT
Josh CROWLE
Marit EISSES
Petra KAMER
Korrie KOREVAART
Willemien THIJSEN
Alex VAN DER MEER
Emily VAN GENT

ZRC SAZU Team

Nejc BERNIK
Andrea FURLAN
Simona KERMAVNAR
Renata KOMIČ MARN
Anica LAVRIČ
Franci LAZARINI
Katarina MOHAR
Mija OTER GORENČIČ
Blaž RESMAN
Helena SERAŽIN
Barbara VODOPIVEC
Romana ZAJC

UGA Team

Alain BONNET
Norina D'ARRIGO
Vanessa DELFAU
Viviana GIORDANO
Amina QUASHIE

SiTI Team

Sabrina ESPELETA
Mariacristina FORCISI
Sara LEVI SACERDOTTI
Stefania MAURO
Raffaella MOTTA

MO
M
// OW
□

Emilia Garda

Travelling with MoMoWo

This catalogue collects and promotes contents from the International Travelling Exhibition which is one of the main means of dissemination of the European cultural cooperation project, MoMoWo.

The exhibition started its year travelling across Europe by visiting the cities that host our partnership, namely Oviedo, Lisbon, Grenoble, Amsterdam, Ljubljana and Turin before then moving on to other cities.

The exhibition is organised into two sections, indoor and outdoor, and addresses not only specialists, but also the general public and non-audiences. The outdoor section is designed to be visited in urban public spaces, such as roads, squares, train stations, etc.

The indoor section consists mainly of an interactive digital exhibition entitled “MoMoWo. 100 Works in 100 Years. European Women in Architecture and Design. 1918-2018” that shows the first results from the MoMoWo database.

The MoMoWo database includes biographies of women architects, civil engineers, furniture and industrial designers, urban planners, interior and landscape designers. It includes entries on prominent and lesser-known figures from the past up until today. It goes beyond MoMoWo partners’ national interests in order to represent the main trends and major ‘schools’ of architecture and design all over Europe.

The biographical data covers education and training, professional histories, networks women have operated in, including informal societies, memberships in trade bodies and associations, their profile as international, national, local and regional designers, as well as looking at how women have

promoted their work i.e. in exhibitions, publications, competition entries, etc.

The data concerning the past is collected into the following three time spans: 1918-45, 1946-68, 1969-89, which all relate to significant periods of cultural, social and political changes in Europe. While the data concerning the period from the Fall of the Berlin Wall (1989) to the end of the MoMoWo project (2018) runs in parallel throughout the project.

The first period was between the end of the two World Wars (1918-45) and witnessed the official entry of women into the building and design fields. Their presence however was sporadic and often confined to the innovative drive of the avant-garde movements and trends.

The second period (1946-68) was a time of expanding opportunities for female design practitioners, and the post-war period in particular, challenged increasing numbers of women to join the architectural, design and engineering professions.

The third period (1969-89) is characterised by significant production both qualitatively and quantitatively due to the 1968 uprisings in Europe and ensuing contribution from feminist movements.

The most recent period (1989-2018) is marked by significant historical events namely the Fall of the Berlin Wall and the end of Socialist regimes in Eastern Europe, and the opportunities that globalisation created for women working in the design and building fields.

Through imagery and slogans, the indoor section of the exhibition presents the public with iconic and lesser known works alike that represent the four above-mentioned time spans.

The works displayed show the creativity of 100 women professionals from over twenty-six countries that have worked in various fields of architecture and design over the last century. They range from architecture, urban planning and landscape architecture to interior and product design. Beside this impressive collection of works, the indoor section also presents the “MoMoWo. Women. Architecture & Design Itineraries across Europe”. Eighteen cultural-tourist itineraries were created by the MoMoWo’s international team in order to promote 125 works of women architects and designers in four cities –Barcelona, Lisbon, Paris, Turin– and two countries the Netherlands and Slovenia.

The outdoor section of the Travelling Exhibition presents the winning projects of the “International Photo Competition” which showcased women designers’ own homes. Organised by MoMoWo, this competition invited professional and amateur photographers to promote the MoMoWo mission by portraying the houses that women professionals had designed for themselves and their families. The International Photo Competition focused on women’s creativity and the impact it has on everyday lives. In fact, the results of this competition aim to highlight the existing relationship between life at home and life at work.

The first three winners’ entire works, consisting of ten photos each, have been published in this catalogue together with the public’s choice from the ten finalists. Five photos each of the remaining six finalists were also published. Lastly, one photograph was published for each of the two entries that had been awarded honourable mentions by the jury for their originality and social awareness.

The interactive concept of the Travelling Exhibition gives the visitor an enriching experience. It has been designed as a powerful tool to support the international circulation of artistic and cultural works and products. It aims to increase awareness and stimulate interest in the works and lives of European women designers as well as those designers who have worked in Europe but were born elsewhere.

This catalogue has more than 360 pages, 100 entries, essays and over 550 illustrations and it aims to raise awareness of the knowledge and critical thought generated by the MoMoWo project through its comparative and multidisciplinary approach. Like other MoMoWo products, this book intends to stimulate the study and research well beyond the end of the project.

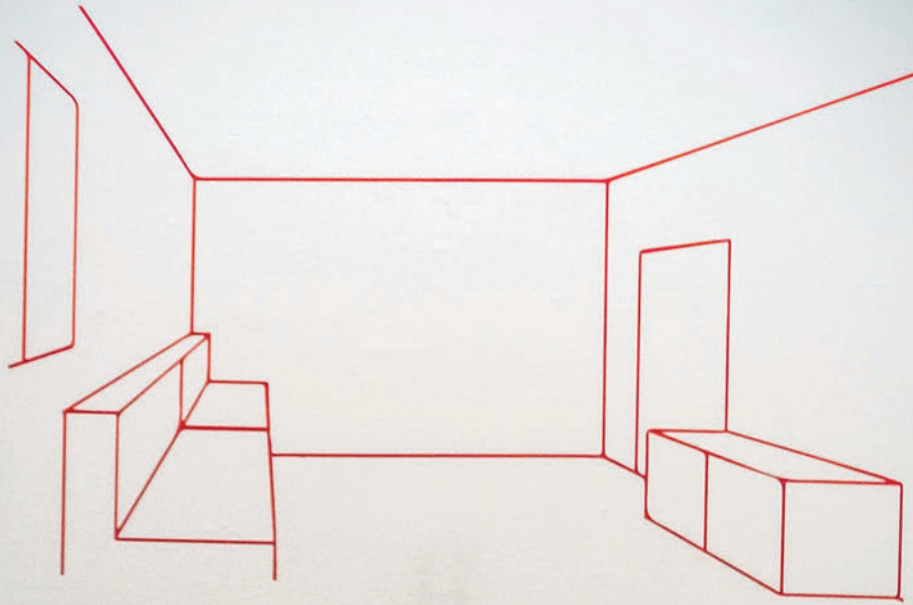
The first section of the catalogue is dedicated to the description of exhibited works and the biography of their authors, while the photos of the reportages are published in a separate section.

The catalogue provides the context and detailed information about the selected works, thus facilitating accessibility to cultural heritage created by women in Europe and beyond. It addresses scholars and students, architects and designers, as well as those interested in gender studies and broader audiences. This book is distributed free at the indoor Travelling Exhibition and is available in specialised and public libraries. A digital version of this catalogue is downloadable from the MoMoWo website (www.momowo.eu).

1918-2018

100 WORKS IN 100 YEARS ■ EUROPEAN WOMEN IN ARCHITECTURE & DESIGN

1918-2018



MoMoWo · 100 WORKS IN 100 YEARS

EUROPEAN WOMEN IN ARCHITECTURE AND DESIGN · 1918-2018

Summary

<i>History Does not Stand in a Single File. 100 Works, 100 Years, 100 Creative Women in Europe</i> Caterina Franchini	14
<i>On Women Architects. Looking for a Room of One's Own: On the Visibility of Professional Women and Associationism in Europe</i> Ana María Fernández García	16
100 WORKS 100 YEARS 100 WOMEN	
Catalogue	22
List of Authors	222
CHRONOMOMOWO	
<i>About ChronoMoMoWo</i> Ana María Fernández García	225
List of Authors	236
THEMATIC ESSAYS	
<i>Women in the History of Architecture and Design. Sailing to a New History</i> Caterina Franchini	238
<i>Crossing Boundaries. Architecture, Design and beyond in the Age of the Pioneers</i> Elena Dellapiana	244
<i>From the Embroidery to the Construction. Women in Design and Architecture: Domus 1928-1950</i> Caterina Franchini	249
<i>To the History of Women Architects. Pioneers of North European Countries</i> Wenche Findal	256
<i>Breaking Ground. Pioneering Women in Serbian Architecture</i> Aleksandra Ilijevski	258
<i>The Access of Women to Architecture. The Situation of Spain's Female Pioneers</i> Ana María Fernández García and Esther Rodríguez Ortiz	262

<i>In Praise of Shadows</i>	
Stéphanie Mesnage	266
<i>Spanish Design Made by Women</i>	
Alicia Menéndez Martínez	272
<i>Maria Helena Matos. A Woman Leadership in Portuguese Design on the Late New State's Dictatorship</i>	
Maria Helena Souto	277
<i>Being Two then Being One. Professional Recognition versus Gender</i>	
Claude Kovatchévitch and Alain Bonnet.....	279
<i>Modernism and Cross-Cultural Heritage: Moriko Kira Connecting the Netherlands and Japan</i>	
Marjan Groot	284
<i>The Reinvention of Architecture in Democratic Times. Two Portuguese Studios Named after Women</i>	
Maria Helena Souto	288
<i>'True Life' and Spaces of Museums, Monuments, and Libraries Mediated by Women Designers in the Netherlands after 1999</i>	
Marjan Groot	290

MOMOWO INTERNATIONAL PHOTO COMPETITION. REPORTAGE ON WOMEN DESIGNERS' OWN HOME

International Photo Competition Winners	296
<i>Women's Tale. A Reportage on Women Designers</i>	
Maria Helena Souto	297

ANNEXES

Credits of Images	338
Bibliography	348
Index of Women Architects, Civil Engineers and Designers	362
Acknowledgments	368

CIP - Kataložni zapis o publikaciji
Narodna in univerzitetna knjižnica, Ljubljana

72(4)
72-051-055.2

MoMoWo

MoMoWo : 100 Works in 100 Years : European Women in Architecture & Design :
1918-2018 / [edited by Ana Maria Fernández García ...et al.]. - 1st ed. - Ljubljana : Založba ZRC, 2016

ISBN 978-961-254-922-0

1. Fernández García, Ana María
285585920

ISBN 978-961-254-922-0



9 789612 549220 >

not for sale