

The process of sharing information in a sustainable development perspective: A web visual tool

*Original*

The process of sharing information in a sustainable development perspective: A web visual tool / Abastante, F.; Pensa, S.; Masala, E. (GREEN ENERGY AND TECHNOLOGY). - In: Green Energy and Technology / Mondini G., Stanghellini S., Oppio A., Bottero M., Abastante F.. - [s.l.] : Springer Verlag, 2020. - ISBN 978-3-030-23784-4. - pp. 339-350 [10.1007/978-3-030-23786-8\_19]

*Availability:*

This version is available at: 11583/2782580 since: 2020-02-11T13:28:10Z

*Publisher:*

Springer Verlag

*Published*

DOI:10.1007/978-3-030-23786-8\_19

*Terms of use:*

This article is made available under terms and conditions as specified in the corresponding bibliographic description in the repository

*Publisher copyright*

Springer postprint/Author's Accepted Manuscript

This version of the article has been accepted for publication, after peer review (when applicable) and is subject to Springer Nature's AM terms of use, but is not the Version of Record and does not reflect post-acceptance improvements, or any corrections. The Version of Record is available online at: [http://dx.doi.org/10.1007/978-3-030-23786-8\\_19](http://dx.doi.org/10.1007/978-3-030-23786-8_19)

(Article begins on next page)

# The process of sharing information in a sustainable development perspective: a web visual tool

Francesca Abastante<sup>1</sup>, Stefano Pensa<sup>2</sup>, Elena Masala<sup>3</sup>

**Abstract** Proposing effective strategies in a sustainable development perspective is the focus of considerable debates, which often develop into uncertain and vulnerable decision contexts.

Numbers and quantitative information in fact often dominate the process of decision-making but they are not easily comprehensible through quick and simple reasoning. Nonetheless, the huge quantities of data that describe our cities and regions could provide excellent bases to analyze spatial data in order to assess territories and simulate future development scenarios.

The application of innovative digital tools in the analysis of territorial issues offers new advantages and opportunities for the improvement of communication values in policies and decision-making processes, concurring to overcome conventional approaches to territorial management.

The paper describes the application of the Interactive Visualization Tool (InViTo), a web tool based on maps and visual analysis allowing data to be filtered, explored, interconnected and compared on a visual interface.

Data visualization, intended as the way to see the unseen (McCormick et al. 1987), is here used as a new paradigm to highlight the positive and negative effects on spatial systems considering the impacts of choice-alternatives along multiple dimensions. The correlation between information and their localization generates an essential instrument for the knowledge of urban dynamics and resilience in answering to specific policies.

The investigation of a number of case studies shows the possibilities and opportunities given by the use of InViTo in creating a shared knowledge between actors involved in decision-making processes and in offering a challenge for integrating new perspectives on the analysis of future cities and regions.

Keywords: InViTo, Data knowledge, Smart cities, Visualization

---

<sup>1</sup>F. Abastante (Corresponding Author), Politecnico di Torino, InterUniversity department of regional urban studies and planning, Torino, Italy (phone: +39011090XXX; e-mail: Francesca.abastante@polito.it).

<sup>2</sup>S. Pensa, LINKS Foundation - Leading Innovation and Knowledge for Society, Logistics and Transport Research Area, Torino, Italy

<sup>3</sup>E. Masala, LINKS Foundation - Leading Innovation and Knowledge for Society, Environmental Heritage and Urban Regeneration Area, Torino, Italy

## 1. Introduction

The on-going urbanization has led to an increased focus on cities (UN 2012) highlighting their inability to offer adequate facilities to their population. In fact, such complex congregation of people tend to become disordered places (Johnson 2008) generating sets of material and non-material problems, which often cause a decrease in terms of values. The material problems comprise among others difficulty in waste management, scarcity of resources, traffic congestions, aging infrastructures and energy management (Borja 2007; Marceau 2008; Toppeta 2010; Washburn et al. 2010). The non-material problems are instead related to social and organisational matters associated “with multiple and diverse stakeholders, high levels of interdependence, competing objectives and values as well as social and political complexity” (Johnson 2008; Weber and Khademian 2008; Dawes et al. 2009; Chourabi et al. 2012).

In this sense, urban and social issues can be considered as “wicked problems” (Rittel and Webber 1973; Abastante et al. 2019) creating potential conflicts and unanticipated effects. Due to the complexity of the cities, the mission of an urban project is never so clear including a wide number of data, variables, parameters, indexes and qualitative elements usually barely measurable.

Moreover, while in the past one of the difficulties in urban planning was the lack of data-measuring activities, nowadays the problem is the opposite: there is a huge amount of quantitative and qualitative data but they are often difficult to read. This difficulty adds a further level of complexity to the planning of strategic solutions. This is particularly true when talking about sustainable development which incorporates different concepts as: sustainable economy, sustainable environment, sustainable society.

In terms of data, the available databases need to be not simply able to visualise data but also to extract and process different kind of usable information (Mingers and Rosenhead 2004; Belton and Stewart 2010; White 2006; Montibeller et al. 2008; Pensa et al. 2014; Lami and Franco 2016; Abastante 2016).

The application of Information and Communication Technology (ICT) is often mentioned as part of the solution to those complex problems and the term ‘smart city’ is increasingly being used in this context (Hilty et al. 2011; Lövehagen and Bondesson 2013).

However, despite that ICT are definitely enhancing the opportunities for spatial planning changing the common vision of the social inclusion (Goodspeed 2011 2012; Resch et al. 2014) they often present huge difficulties in being applied in daily practice (te Brömmelstroet 2010; Vonk et al. 2005): 1) it takes a long time to calculate results which hinder the interaction between data models and users; 2) data models generally have low flexibility to adjust to specific needs; 3) most of these support systems have limited abilities in communication.

Communication is in fact one of the main features to be considered when talking about effectiveness of ICT for smart cities but the approach of communication by simply “writing down your objectives and stating your priorities, is inadequate for decisions worthy of thought” (Keeney 2013; Lami et al. 2014; Lami and Abastante 2017; Abastante et al. 2018).

Thus, spatial planning is currently encountering new approaches to the use of technology. In particular, both the academic researchers and professionals are increasing their interest in data-driven methods (Kamenetz 2013; Lanzerotti et al. 2013; Kokalitcheva 2014) investigating new tools in order to allow information to be easily extracted from data and disclosed to the stakeholders involved in an urban planning process (Bawa-Cavia 2010; Neuhaus 2011; Chua et al. 2014).

In this context, the paper investigates three case studies describing the application of the Interactive Visualization Tool (InViTo), which is a web tool based on spatial maps and visual analyses allowing data to be filtered, explored, interconnected and compared on a visual interface (Pensa et al. 2014). The aim of InViTo is to build a shared basis of discussion among the actors involved being interactive in order to allow adjustments during an urban process. Furthermore, InViTo offers a way to represent different typologies of geo-referenced data and to combine them in order to visualise the “hidden connections” (Dodge 2005) among these. In this perspective, it seems to be a useful tool to support strategies of sustainable development.

After the introduction the paper is organized as follows: section 2 reports the methodology adopted focussing on the development of the InViTo tool; section 3 shows some examples of applications of InViTo; finally, the conclusions resume the potentialities of the methodology adopted and the future developments.

## **2. Methodology**

### ***2.1 The InViTo Tool***

InViTo has been developed starting from 2011 (Pensa and Masala 2014). It has been conceived as a visual support for spatial planning and decision-making processes. In this sense, InViTo is a toolbox for supporting the analysis, the exploration, the visualisation and communication of data in order to facilitate policy and decision-making, improving the communication between actors coming from different backgrounds.

In its current version, InViTo can be classified within the category of Spatial Decision Support System (SDSS) (Malczewski 1999; Abastante et al. 2017; Lombardi et al. 2017) as a Web-GIS tool. In fact, it is a web platform able to show and present GIS data and let people to play with those in order to increase the level of knowledge on spatial issues among both expert and non-expert people. Nevertheless, the new developments allow the exploration of non-spatial data too, so that interactive info-

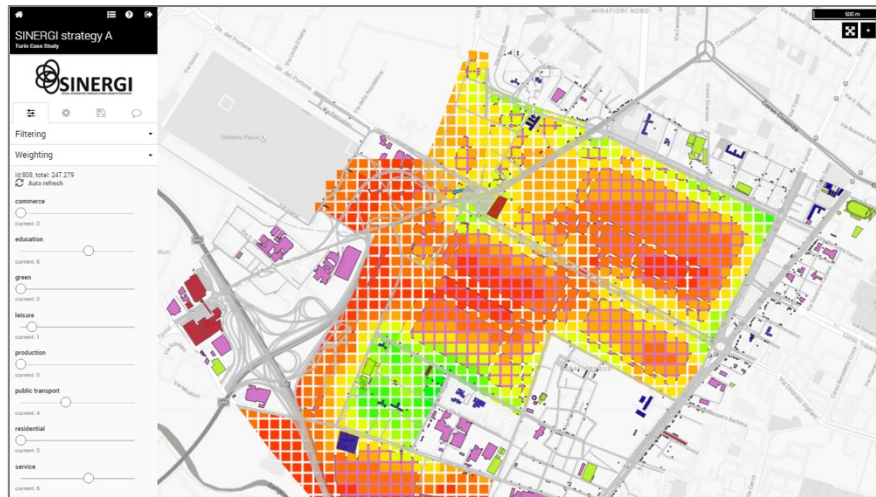
graphics can be visualised and analysed. The construction and development of the InViTo tool, crossed different phases and involved many steps. In particular, it is possible to recognize six development steps: the construction of the web platform, the back-end, the front interface, the data filtering, the map weighting and the data visualization.

The building of a web platform structure was the first essential step to develop the tool creating the general framework. Its construction took several months and has been progressively adapted to the development of other elements composing the tool. It is important to underline that, in order to be really accessible, this part of the tool was completely based on an open source structure and open source initiatives. From the point of view of the IT structure, InViTo is composed by two main sections: the back-end and the front interface.

The **back-end** is destined for GIS technicians, planners and administrators of different projects. In this section, the logged-in users can create new projects and manage existing ones deciding the information that need to be seen by final users. Moreover, in the back-end interface, the logged-in users can decide the filter modality choosing among checkbox, dropdown menu, range sliders or single choice range sliders. Finally, specific buttons provide possibilities for customising the visualisation or for enabling particular elements such as tables, analysis grids or background maps. Accordingly, the back-end interface is flexible and allows a high level of customization. This is useful when managing project devoted to the identification of strategies of sustainable development, which involve different aspects.

The **front interface** is destined for final users. In fact it can be public and allow people visualizing, filtering and exploring data related to specific projects. The front-end interface is graphically structured by two main elements: a viewer window containing an interactive map and a vertical menu on the left side containing

all the parameters settled by the logged-in users in the back-end interface (Figure 1).



**Fig. 1** Front interface of InViTo: a window containing an interactive map on the main frame and a vertical menu on the left side.

The structure of the front interface can be in turn divided into three subsections: data filtering, map weighting and data visualization.

The **data filtering** section allows data to be interactively selected and filtered by the end users in order to customise the visualisation. InViTo basically works as other GIS viewers. However, it does not visualise only the different layers of a set of data, but it allows users to explore the single records of a dataset by the use of different kind of pre-settled filters. Moreover, the filters can be grouped in the so called “panels”. The panels can be defined as macro-sections of qualitative and quantitative data so that the visualisation can be driven through a particular path to follow. Moreover, InViTo allows data to be investigated at different levels with also intersection of attributes, in order to analyse data clusters in relation to specific parameters. In this sense, InViTo overcome the data-map representation to arrive to the visualisation, intended as the discipline to see the unseen (McCormick et al. 1987).

The **map weighting** section allows the filtered maps to be overlapped and weighted on the basis of their priority. The aim of the map weighting section is to provide users with a tool for analysing the localisation of expected effect of specific elements and evaluating the sum of effects on the basis of a specific mathematical curve associated to the layers. The map weighting is currently based on the sum of maps as in the basic methodology of the Multicriteria Decision Analysis (MCDA –

Figueira et al. 2005). Further developments of InViTo will improve this section in order to integrate the opportunity to develop MCDA directly in the tool as the spatial Multicriteria Analyses combining GIS and MCDA (Malczewski 1999; Ferretti 2013).

The **data visualization** settings allow a high level of customization on colours, dimensions, styles, map styles (between Open Street Maps or different Google Maps styles) and on a series of utilities by means of which the tool is expected to offer a wide range of possibilities for users to improve their analytical skills and enhancing the discussion. An interesting possibility of the tools is constituted by the visualization of interactive tables and charts showing data according to the filters activated in the filtering section. The tables show the attributes related to the filtered data, providing pre-settled additional information field by field. The charts show the values of the filtered data in relation to the whole set of data, highlighting the selected geometries.

The distinctive features of InViTo are therefore dynamicity and interactivity, which make it open to variously skilled users and suitable to be part of instrumental equipment for meetings and workshops. In fact, it can be used by a single person or collectively during discussion sessions. In this case the displayed map can become the interface for sharing opinions and reasoning. In fact, its quick responses and visual interface offer possibilities for improving the discussion among people, providing a shared basis for enhancing the debate.

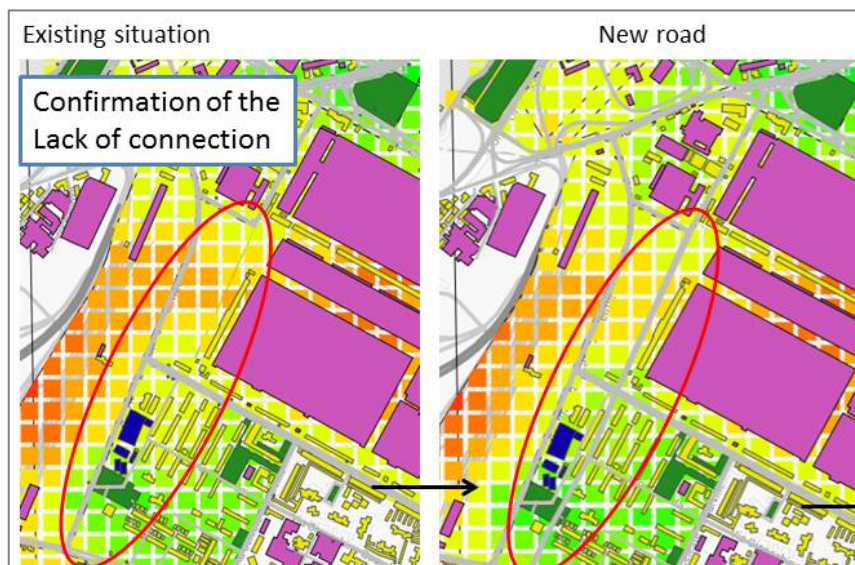
### 3. Case Studies

Spatial decisions and policymaking processes affect, or can affect, the geography of an area at different spatial scales. This can happen with a very wide spectrum of consequences, which can be studied by different discipline fields such as urban planning, transport planning, mobility, environment, social and economic sciences. The InViTo structure was conceived as open as possible in order to avoid constraints in the use of the tool. Thus, it can be used for dealing with different case studies, with different purposes and afferent to various disciplines. The following three case studies show some example of applications of InViTo.

#### 3.1 *SINERGI project*

The Social Inclusion through Urban Growth Strategies (SINERGI) is a project funded by the “Europe for Citizens” programme. It involved four cities as Skopje, Lisbon, Turin and Zagreb, in a number of seminars and workshops oriented to the improvement of the process of social inclusion within the urban planning.

In order to achieve the project objective, InViTo has been chosen to perform the SINERGI workshops. The first workshop was held in Skopje in December 2014 and was focused on the evaluation of three infrastructural scenarios for an urban area in the same city. The second workshop was held in Turin in June 2015 and concerned the renewal of a huge dismissed urban area with an industrial past and many future projects insisting on it (Figure 2).



**Fig. 2** The use of InViTo during the second SINERGI workshop held in Turin in June 2015: identification of an infrastructural lack and checking of design ideas.

Both the workshops had a diversified public, composed by city administrators, technicians, academics, students and social representatives. A number of discussions emerged outlining possibilities and opportunities given by the use of interactive maps designed to facilitate and improve the interaction between the information and the actors involved in the planning process.

The tool has been used to detect critical areas and areas with more opportunities. After the discussion of some design alternative options, InViTo has been applied to evaluate “what if” scenarios. The outcome provided by the tool gave no solutions, but opportunities for the participants involved in the workshops to discuss and elaborate a shared solution.





The online use of this application provided the possibility to share the information between the partners of the project. Furthermore, it generated an intuitive visualisation of the railway connections of an important city like Frankfurt am Main, showing the arriving trans, the outgoing ones and those that are crossing the city, the typology of the trains and the possible connections among the different trains. Colours and thickness of lines change according to the setting made by the users, providing further information on the selected elements.

### 3.3 Tweets in Barcellona

A third case study concerns the visualization of tweets sent from the metropolitan area of Barcelona in the period January 7-19, 2015. The research is part of the TUD COST Action TU1306 - Fostering knowledge about the relationship between Information and Communication Technologies and Public Spaces supported by strategies to improve their use and attractiveness (CYBERPARKS). The objective of the research was the improving of the design of public open spaces by means of information captured by the analysis of user-generated data.

The data collected from Twitter have been elaborated and uploaded in InViTo. The visualisation allows users to interact with a large amount of data (more than 67.000 records) and to understand the urban patterns generated by Twitter's users by the self-exploration.

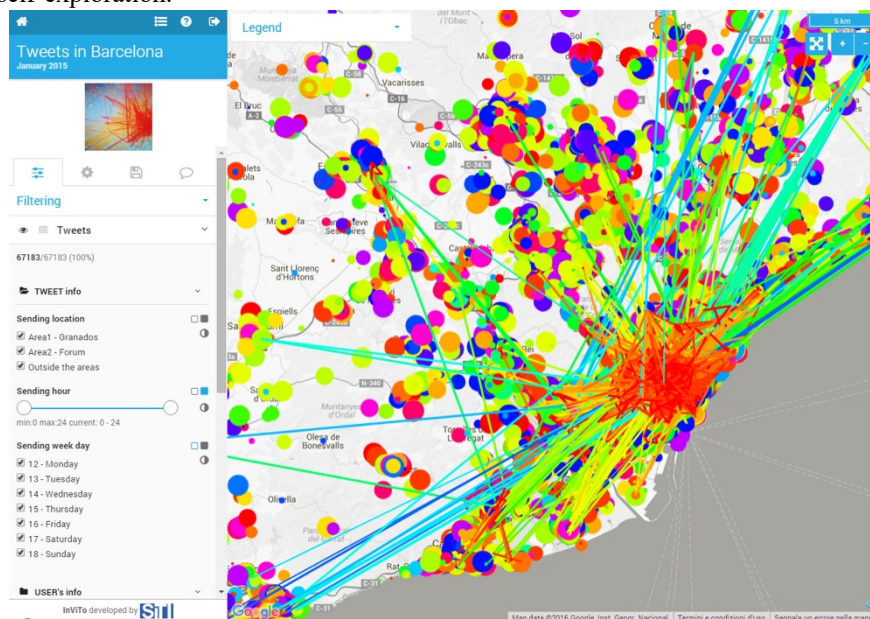


Fig. 4 The visualisation of Twitter Data in Barcelona, collected in January 2015.

The large amount of maps that can be obtained by such a data exploration is sufficient to identify several urban patterns and understand some dynamics on the use of the city. In particular, the tool showed to be very important for analysing the tweets following both a spatial and a temporal logic. The differences in tweets spatial distribution according to the temporal period selected, provided new insights on the analysis of the city. These outcomes highlighted a number of issues related to the tourism and the use of the city in relation to the origin country of people visiting Barcelona.

#### **4. Conclusions**

The three case studies are a small example of possibilities in applying the tool. As showed, InViTo can be a powerful tool in many participatory process since it is able to visualize data but also to analyse usable information.

The high level of customisation of the filtering and weighting sections as well as of the visualisation provide a large amount of opportunities for the information sharing between large groups of people. The use of visualisation goes against a technocratic vision of cities and increases the power of experts. It allows planners, city administrators, technicians, but also common citizens, to improve their awareness of urban problems. A higher knowledge enhances the decision-making process, providing opportunities for better choices.

Furthermore, a high flexibility of the tool allows the instrument to be adapted to the case study and not, as often, the planning adapted to the possibilities given by the tool. By this way, the urban tool is not a constraint but a real support to the sustainable development of cities.

Future developments of InViTo will foresee the improvement of the MCDA section currently drafted in the tool in order to better weight the maps provided and enhance the usability of InViTo in supporting urban planning.

#### **Bibliographic references**

Abastante F (2016), Multicriteria decision methodologies supporting decision processes. *Geoing. Ambient. Mineraria GEAM*, 149, 5–18.

Abastante F, Lami IM, Lombardi P (2017) An Integrated Participative Spatial Decision Support System for Smart Energy Urban Scenarios: A Financial and Economic Approach. *Buildings*, 7(4), 103.

Abastante F, Corrente S, Greco S, Ishizaka A, Lami IM (2018) Choice architecture for architecture choices: Evaluating social housing initiatives putting together a

parsimonious AHP methodology and the Choquet integral. *Land Use Policy*, 78, 748-762.

Abastante F, Corrente S, Greco S, Ishizaka A, Lami IM (2019), A new parsimonious AHP methodology: Assigning priorities to many objects by comparing pairwise few reference objects, *Expert Systems with Applications*, Vol. 127, 2019, pp. 109-120.

Bawa-Cavia A (2010) Sensing the Urban. Using location-based social network data in urban analysis, 1st workshop on Pervasive URBan Applications PURBA '11. San Francisco.

Belton V, Stewart T (2010) Problem Structuring and Multi Criteria Decision Analysis. In: Hergot et al. (eds.) *Trends in Multiple Criteria Decision Analysis*, International Series in Operations Research and Management Science, 142. Springer Science and Business Media, pp. 209-239.

Borja J (2007) Counterpoint: Intelligent cities and innovative cities, *E-Journal on the Knowledge Society*, 5. Available at <http://www.uoc.edu/uocpapers/5/dt/eng/mitchell.pdf>.

Chourab H, Nam T, Walker S, Gil-Garcia J, Mellouli S, Nahon K, Pardo TA, Scholl HJ (2012) Understanding smart cities: an integrative framework. In: *System Science (HICSS)*, 45th Hawaii International Conference on, Grand Wailea, Maui, Hawaii, pp. 2289–2297.

Chua A, Marcheggiani E, Serrvillo L, Vande Moere A (2014) FlowSampler: Visual Analysis of Urban Flows in Geolocated Social Media Data. In M. Aiello, & D. McFarland (Eds.), *International Conference on Social Informatics*. Barcelona.

Dodge M (2005) *Information Maps: Tools for Document Exploration*, CASA, working paper series 94. University College London, London, Retrieved November 5, 2013, from <http://www.bartlett.ucl.ac.uk/casa/publications/working-paper-94>.

Ferretti V (2013) *Le Analisi Multicriteri spaziali a supporto delle procedure di pianificazione e valutazione: analisi e classificazione della letteratura scientifica*, *Geoingegneria Ambientale e Mineraria* 2: 53-66.

Figueira J, Greco S, Ehrgott M (2005) *Multiple Criteria Decision Analysis: State of the Art Surveys*, Boston, Dordrecht, London: Springer Verlag.

Goodspeed R (2011) *The Coming Urban Data Revolution*, Retrieved January 8, 2015, from Planetizen: <http://www.planetizen.com/node/51158>.

Goodspeed R (2012) *The Democratization of Big Data*, Retrieved January 2015, 02, from Planetizen: <http://www.planetizen.com/node/54832>.

Hilty L, Lohmann W, Huang E (2011) Sustainability and ICT - An overview of the field with focus on socio economic aspects, *Notizie di Politeia* 17(104): 13-28.

Kamenetz A (2013) *How Cities Are Using Data To Save Lives*, Retrieved January 13, 2015, from Fast company: <http://www.fastcoexist.com/3021498/how-cities-are-using-data-to-save-lives>.

Keeney RL (2013) Identifying, prioritizing and using multiple objectives, *EURO Journal on Decision Processes* 1, pp. 45-67.

Kokalitcheva K (2014) How a swarm of data is helping Chicago re-map urban life, Retrieved January 12, 2015 da Venture Beat: <http://venturebeat.com/2014/05/14/how-a-swarm-of-data-is-helping-chicago-re-map-urban-life>.

Johnson B (2008) Cities, systems of innovation and economic development. *Innovation: Management, Policy & Practice* 10(2-3): 146-155.

Lami IM, Abastante F, Bottero M, Masala E, Pensa S (2014) Integrating multicriteria evaluation and data visualization as a problem structuring approach to support territorial transformation projects, *EURO Journal on Decision Processes* 2(3-4): 281-312.

Lami IM, Franco LA (2016) Exploring the Affordances of Collaborative Problem-Solving Technologies in the Development of European Corridors, in: H., Drewello, & B., Scholl (Eds.), *Integrated Spatial and Transport Infrastructure Development: The case of European North-South Corridor Rotterdam-Genoa: 65-80*, London: Springer Publishers.

Lami IM, Abastante F (2017) Social Housing evaluation procedures: literature review and steps forward. *Geam-Geoingegneria Ambientale E Mineraria-Geam-Geoenvironment Engineering Environment And Mining*, 150; 15-28.

Lanzerotti L, Bradach J, Sud S, Barthelemy H (2013) Geek Cities: How Smarter Use of Data and Evidence Can Improve Lives, Retrieved January 13, 2015 da The Bridgespan Group: <http://www.bridgespan.org/Publications-and-Tools/Performance-Measurement/Geek-Cities-Data-Improves-Lives.aspx#.VLZ9BSvF9Ks>.

Lombardi P, Abastante F, Torabi Moghadam S, Toniolo J (2017) Multicriteria Spatial Decision Support Systems for Future Urban Energy Retrofitting Scenario. *Sustainability*, 9: 1252; doi:10.3390/su9071252

Lövehagen N, Bondesson A (2013) Evaluating sustainability of using ICT solutions in smart cities – methodology requirements, in: M. Hilty, B. Aebischer, G. Andersson, W. Lohmann (Eds.), *ICT4S 2013: Proceedings of the First International Conference on Information and Communication Technologies for Sustainability*, Switzerland, Zurich: 184–191.

McCormick BH, De Fanti TA, Brown MD (1987) Visualization in Scientific Computing. *Computer Graphics*, 21(6).

Malczewski J (1999) *GIS and Multicriteria Decision Analysis*, John Wiley and Sons, New York.

Marceau J (2008) Introduction: Innovation in the city and innovative cities, *Innovation: Management, Policy & Practice* 10(2-3): 136-145.

Mingers J, Rosenhead J (2004) Problem structuring methods in action, *European Journal of Operational Research* 152: 530-554.

Montibeller G, Belton V, Ackermann F, Ensslin L (2008) Reasoning maps for decision aid: an integrated approach for problem-structuring and multi-criteria evaluation, *Journal of the operational research society*, 59, pp. 575-589.

Neuhaus F (2011) *Twitter Data - Seeking Spatial Paettern*. Retrieved January 09, 2015, from UrbanTick: [http://urbantick.blogspot.it/2011/03/twitter-data-seeking-spatial-pattern.html?utm\\_source=feedburner&utm\\_medium=feed&utm\\_campaign=Feed:+urbantick+\(urbanTick\)](http://urbantick.blogspot.it/2011/03/twitter-data-seeking-spatial-pattern.html?utm_source=feedburner&utm_medium=feed&utm_campaign=Feed:+urbantick+(urbanTick))

Pensa S, Masala E, Lami IM, Rosa A (2014) Seeing is knowing: data exploration as a support to planning, *Proceedings of the ICE - Civil Engineering* , 167(5): 3-8.

Pensa S, Masala E (2014) InViTo: An Interactive Visualisation Tool to Support Spatial Decision Processes. In: N. N. Pinto, J. A. Tenedorio, A. P. Antunes, & J. R. Cladera (Eds.), *Technologies for Urban and Spatial Planning: Virtual Cities and Territories*, Hershey, PA: IGI Global Book: 135-153.

Resch B, Summa A, Sagl G, Zeile P, Exner JP (2014) Urban Emotions – Geosemantic Emotion Extraction from Technical Sensors, Human Sensors and Crowdsourced Data, Heidelberg: German Research Foundation (DFG – Deutsche Forschungsgemeinschaft).

Rittel HWJ, Webber M (1973), Dilemmas in a general theory of planning, *Policy Sciences*, 4: 155-169.

te Brömmelstroet MC (2010) Equip the warrior instead of manning the equipment: Land use and transport planning support in the Netherlands, *Journal of Transport and Land Use* 3: 25-41.

Toppeta D (2010) The Smart City Vision: How Innovation and ICT Can Build Smart, “Livable”, Sustainable Cities. The Innovation Knowledge Foundation. Available at [http://www.thinkinovation.org/file/research/23/en/Toppeta\\_Report\\_005\\_2010.pdf](http://www.thinkinovation.org/file/research/23/en/Toppeta_Report_005_2010.pdf).

United Nations (2012) The future we want, Cities, fact sheet for the Rio United National Conference on Sustainable Development, Rio de Janeiro, Brazil, June 20-22, 2012, Accessible at [http://www.un.org/en/sustainablefuture/pdf/Rio+20\\_FS\\_Cities.pdf](http://www.un.org/en/sustainablefuture/pdf/Rio+20_FS_Cities.pdf).

Vonk G, Geertman S, Schot P (2005) Bottlenecks blocking widespread usage of planning support systems, *Environment and Planning A*. 37(5): 909 – 924.

Weber EP, Khademian AM (2008) Wicked problems, knowledge challenges, and collaborative capacity builders in network settings, *Public Administration Review* 68(2): 334-349.

Washburn D, Sindhu U, Balaouras S, Dines RA, Hayes NM, Nelson LE (2010) *Helping CIOs Understand "Smart City" Initiatives: Defining the Smart City, Its Drivers, and the Role of the CIO*, Cambridge, MA: Forrester Research, Inc.

White L (2006) Evaluating Problem-Structuring Methods: Developing an Approach to Show the Value and Effectiveness of PSMs, *The Journal of the Operational Research Society* 57(7): 842-855.

