

Low-cost sensors for rapid mapping of cultural heritage: first tests using a COTS Steadicamera

*Original*

Low-cost sensors for rapid mapping of cultural heritage: first tests using a COTS Steadicamera / Calantropio, Alessio; Patrucco, Giacomo; Sammartano, Giulia; Teppati Losè, Lorenzo. - In: APPLIED GEOMATICS. - ISSN 1866-9298. - STAMPA. - 10:1(2018), pp. 31-45. [10.1007/s12518-017-0199-6]

*Availability:*

This version is available at: 11583/2703730 since: 2018-03-19T10:30:16Z

*Publisher:*

Springer Nature

*Published*

DOI:10.1007/s12518-017-0199-6

*Terms of use:*

This article is made available under terms and conditions as specified in the corresponding bibliographic description in the repository

*Publisher copyright*

(Article begins on next page)

# *Low-cost sensors for rapid mapping of cultural heritage: first tests using a COTS Steadicamera*

**Alessio Calantropio, Giacomo Patrucco,  
Giulia Sammartano & Lorenzo Teppati  
Losè**

**Applied Geomatics**

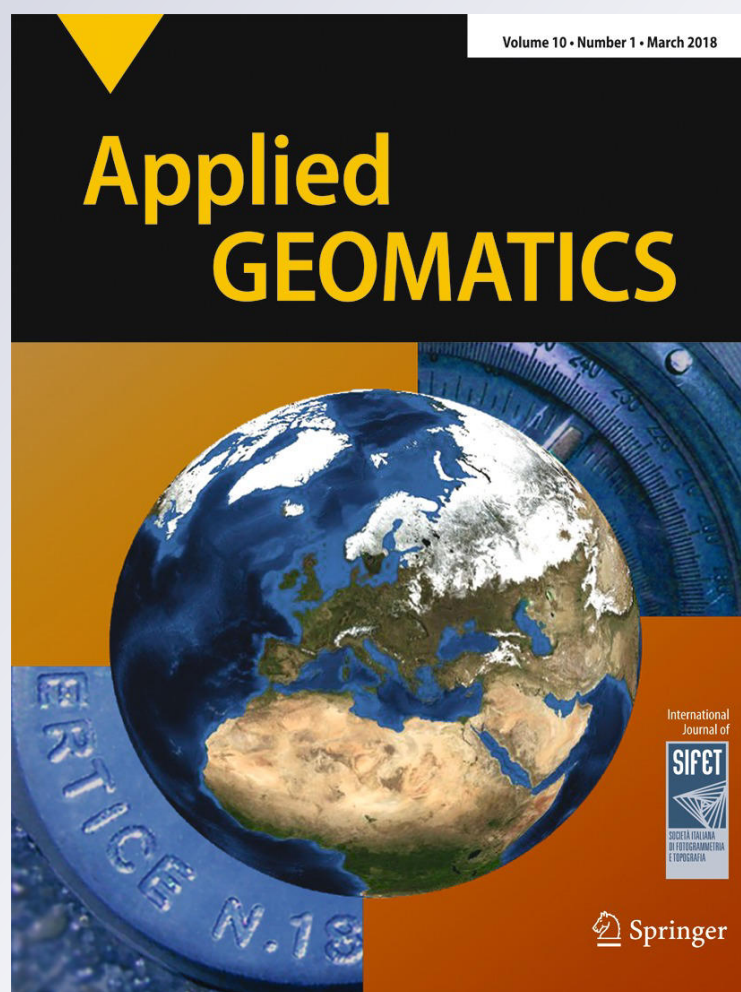
ISSN 1866-9298

Volume 10

Number 1

Appl Geomat (2018) 10:31–45

DOI 10.1007/s12518-017-0199-6



**Your article is published under the Creative Commons Attribution license which allows users to read, copy, distribute and make derivative works, as long as the author of the original work is cited. You may self-archive this article on your own website, an institutional repository or funder's repository and make it publicly available immediately.**



# Low-cost sensors for rapid mapping of cultural heritage: first tests using a COTS Steadicamera

Alessio Calantropio<sup>1</sup> · Giacomo Patrucco<sup>1</sup> · Giulia Sammartano<sup>1</sup> · Lorenzo Teppati Losè<sup>1</sup> 

Received: 5 July 2017 / Accepted: 9 November 2017 / Published online: 11 December 2017  
© The Author(s) 2017. This article is an open access publication

## Abstract

One of the last and more pressing requests to the researchers working in the field of Geomatics is to research, validate, and propose new strategies for the rapid mapping of different contexts, with low-cost solutions. The continuous implementation of image-matching algorithms and their use in structure from motion (SfM) software allow using new sensors and implementing new strategies for the production of 3D models starting from an image-based approach. In the last years, another central issue for the researchers has been related with the documentation of cultural heritage (CH) artifacts using different sensors and techniques. In the experience presented in this paper, the attention was focused on these two central aspects: a test of a commercial off-the-shelf (COTS) steadicamera for the rapid 3D documentation of two cultural heritage artifacts was proposed. The two sites chosen to evaluate this mass market sensor were as follows: the *Basilica of San Nicola* (Tolentino, MC, Marche Region, Central Italy) and the *Castello del Valentino* (Torino, TO, Piedmont Region, North Italy). The metric products obtained with the Steadicam were compared with more consolidated techniques such as close-range photogrammetry (CRP) and terrestrial laser scanner (TLS). The products derived from the different techniques were then evaluated and compared, and an overall assess of the use of this new solution was made.

**Keywords** Rapid mapping · Cultural heritage · 3D models · Steadicam · Videogrammetry · SfM

## Introduction

In the last years, a great number of works in the field of Geomatics have focused their attention on the use of low-cost and commercial sensors for the rapid mapping in different scenarios (Kolev et al. 2014; Micheletti et al. 2014; Nocerino et al. 2017). In Italy, due to the recent seismic events, the attention was focused also in post disaster scenarios, where the contribution of geomatics could become imperative. The researchers are nowadays experimenting different solutions based on several

techniques. Simultaneous localization and mapping (SLAM) portable LiDAR and photogrammetric approaches seem to be the most promising for future developments (Brocchini et al. 2017; Chiabrando et al. 2017b, c; Micheletti et al. 2014). The key concepts of the range/image-based sensors are as follows: the rapidity of usage and the low-cost aspect in the 3SLAM technique is based on an algorithm that using the information derived from a sensor (often Lidar or imagery) is able to compute the position of the device in the space. Thanks to this technology, new interesting tools for the rapid mapping are available on the market, although the costs still do not allow it to be defined as market accessible. Some experiences (Bosse et al. 2012; Brocchini et al. 2017; Chiabrando et al. 2017b, c) have investigated 3D documentation of different scenarios using SLAM technologies and compared the results with other consolidated methodologies. In the scenario of image-based techniques, a big acceleration of the whole process has been facilitated by two different factors: the introduction on the markets of new low cost and high performances sensors (smartphones, tablet, and integrated cameras that are more and more performing) and the continuous implementation of the image matching algorithms that are embedded in the software using an SfM approach

---

✉ Lorenzo Teppati Losè  
lorenzo.teppati@polito.it

Alessio Calantropio  
alessio.calantropio@polito.it

Giacomo Patrucco  
giacomo.patrucco@polito.it

Giulia Sammartano  
giulia.sammartano@polito.it

<sup>1</sup> DAD - Department of Architecture and Design, Politecnico di Torino, Viale Mattioli 39, 10129 Torino, Italy

**Table 1** Main specs of the steadicam

Model	DJI OSMO+
Camera	
Model	X3/FC350H
Sensor	1/2.3" CMOS effective pixels: 12.40 M
Lens	94° FOV 20 mm f/2.8
ISO range	100–3200 (video); 100–1600 (photo)
Max. image size JPEG, DNG (RAW)	Shooting: 4000 × 3000 px From 4 K video: 4096 × 2160 px
Video resolution MP4/MOV	FHD: 1920 × 1080 (24/25/30/48/50/60/100p)
Handle	
Dimension	61.8 × 48.2 × 161.5 mm
Weight (with battery)	200 g
Gimbal	
Model	Zenmuse X3
Weight	221 g
Angular vibration range	±0.03°
Max. controllable speed	120°/s

(Harwin and Lucieer 2012; Koutsoudis et al. 2014; Remondino et al. 2014; Westoby et al. 2012). The use of steadicams is now widespread, mainly for video and photo documentation, both for expert and unprofessional purposes. The research experience on this subject is not exhaustive, but multi-sensor devices with the stabilization standard have been developed in environmental context applications, as the agriculture ones (Das et al. 2015).

The possibility to obtain different metric products thanks to a SfM approach based on video frames extraction was stressed in this research, using a new COTS Steadicam. More consolidated sensors, terrestrial laser scanning (TLS) and digital single-lens reflex (DSLR), were used as ground truth elements.

**Table 2** Specifications of the two cameras

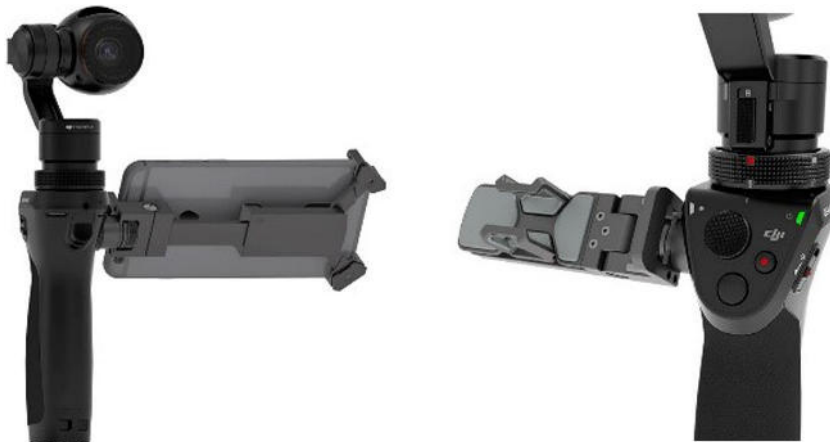
	Model	Sensor (mm)	Image size	Lens (mm)	Foc. (mm)
A	Canon EOS 5DS R	CMOS 50.6Mp 36 × 24	7680 × 5120	24–105	30
B	Canon EOS 5D mark II	CMOS 21Mp 36 × 24	5616 × 3744	24–70	24

### Image-based solutions for cultural heritage documentation: low-cost sensors and rapid mapping

As already stated, lot of researchers focused their attention on the use of mass market sensors combined with an image-based approach. The use of these low-cost sensors such as smartphones, tablets, and action cams for rapid mapping is becoming more and more common, and getting metric data becomes extremely fast. Since the acquisition time is very short and the technologies are low cost, the strategies are applicable to different contexts, as the risk areas ones.

In this sense, the active and central role of Geomatics in the documentation of cultural heritage context has been established since many years. The principles that drive the works of documentation are already well known by the experts of the field: the documentation has to be continuous; it should go with every stage of life of the heritage, and it has to be foreseen for future applications. Such principles are contained in ICOMOS charters, particularly in Sofia Charter, 1996, re-affirmed by European Landscape Convention of the Council of Europe, 2000; with the CIPA 3 × 3 rules in their 2013 last update, the will of optimize the whole process of mandatory documentation of CH has been reaffirmed (Waldhäusl et al. 2013). Moreover, thanks to the technological improvements described above is nowadays possible to reach good levels of sustainability, in the direction of quality of information and detail, both in terms of time and cost. Furthermore, when working on cultural contexts is necessary

**Fig. 1** DJI OSMO+ with a mounted smartphone (left) and detail of the handle controls



**Table 3** Specifications of the scanner

Operational range	0.6–130 [m]
Ranging error	± 2 [mm]
Vertical/horizontal field of view (FoV)	305/360 [°]
Embedded camera resolution	70 [Mpx]
Acquisition speed	Up to 976.000 [pt/s]

also to consider the importance of their spatial and temporal complexity.

Considered all these reasons, several researchers in geomatics have recently begun to approach these themes with a new perspective and trying to improve and adapt themselves to the different needs of sites (Balletti et al. 2015; Gruen 2009; Lerma et al. 2011). As is well known, the choice of specific approaches with dedicated sensors leads to related specific outputs in terms of the level of detail requested and of resources involved. The focus on technologies dedicated to the rapid mapping of cultural heritage has been studied by several researchers (D'Annibale et al. 2013; Fiorillo et al. 2016; Kwiatek and Tokarczyk 2015; Pérez Ramos and Robleda Prieto 2016) while (as previously reported) the use of Steadicam for these purposes is still a poorly researched topic.

## A COTS Steadicam: first experiences in comparison with consolidated sensors

### Sensors

As already stated, different sensors, depending on the techniques adopted, were employed: a TLS, two different DSLR, and a steadicam.

**Fig. 2** The case study A: the Castello del Valentino, view from the inner court (top-left), detail of the decorated vault of the cabinet (down-left), and general view of the cabinet (right). Source: <http://castellodelvalentino.polito.it/> and authors



**Fig. 3** Risks of ordinary type related to the everyday usage of the Valentino Castle for academic activities of Politecnico di Torino and numerous events that take place in the Castle. Source: [www.lastampa.it](http://www.lastampa.it) and [www.polito.it](http://www.polito.it)

### Steadicam

The DJI OSMO+ steadicam (Dà-Jiāng Innovations Science and Technology Co. 2017) was tested in order to evaluate the metric and radiometric quality of the 3D photogrammetric model. A detailed description of the steadicam is reported below and specification in Table 1. OSMO+ (Fig. 1) is a handheld camcorder manufactured by DJI and released in October 2015. OSMO+ equipped by X3/FC350H camera is capable of recording 4 K videos (max 30 frames/s) in MP4 or MOV and capturing photos at 12 Mpx (max 4096x2160px) in Adobe DNG RAW or JPEG formats. Furthermore, it is also possible to upgrade the sensor with other cameras. The sensor is mounted on a 2-axis gimbal that stabilize the device (it is



**Fig. 4** The case study B: the Basilica of San Nicola, main façade (top) and the coffered wooden ceiling (down). Source: <http://www.iluoghidelsilenzio.it/> and authors

possible to assemble an additional gimbal for Z-axis), cushioning the movements of the operator's arm, providing smooth videos without shaky frame movements. On the left

**Fig. 5** Basilica di Tolentino. Provisional structures after the seismic events



**Table 4** Specifications about data acquisition and processing time

		Laser scans	Steadicam	DSLR camera
(A)	Acquisition	52 min	2 min 20s	35 min
	Processing	3 h	8 h	9 h
(B)	Acquisition	178 min	4 min 30s	80 min
	Processing	14 h	7 h	9 h

of the handle, an adjustable support can house a smartphone providing, through a dedicated app for iOS or Android operating systems, the control system of the device, as well as the screen on which to see what the camera is framing.

#### DSLR camera

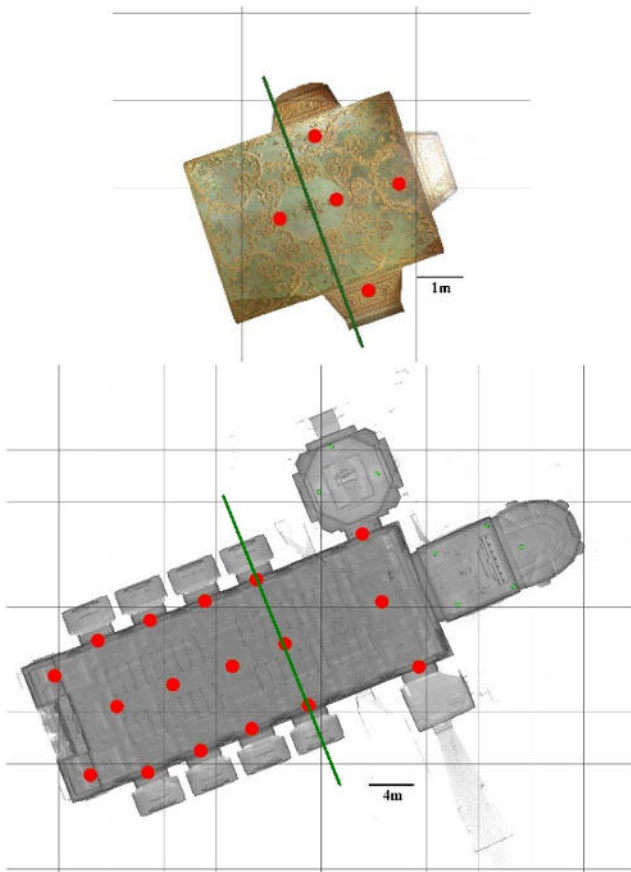
Furthermore, a more traditional close-range photogrammetric approach based on digital camera was performed. Two different DSLR cameras were used for the surveys; their specifications are shown in Table 2.

#### Laser scanner

A TLS acquisition was performed using a time-of-flight (ToF) laser scanner Faro Focus<sup>3D</sup> by CAM2 (Table 3), in order to obtain a *ground-truth* metric model.

#### The case studies

In this first phase, the multi-sensor approach, finalized to the evaluation of the photogrammetric products by steadicam, was tested mainly on two cultural heritage artifacts, which are specifically chosen for comparing similarities and



**Fig. 6** The cases study A (top, the cabinet) and B (down, the church). In red the positions of the scans, in green the positions of the transversal sections referred to Fig. 10

differences: The *Castello del Valentino* (Torino, TO, North Italy) and *The Basilica of San Nicola* (Tolentino, MC, Central Italy), both located in Italy. Both the sites that were chosen as case studies possess a high cultural value and peculiar features. Furthermore, they can both be included, for different reasons, in that part of cultural heritage subjected to several types of risks.

**The Valentino castle cabinet (A)**

The Castello del Valentino (case study A) in Fig. 2 is part of the Royal Residences of the Savoy House in the territory of Piedmont. The castle is nowadays hosting the Faculty of Architecture of the Politecnico di Torino, several conferences

**Table 5** Scan specifications

	N° scans	Mean dimension	Meann°pt/ scans	Resolution (Mpt)	Quality	Scan area
(A)	5	440 Mb	18 mln	¼ (1 pt./6 mm at 10 m)	4×	180°
(B)	17	670 Mb	24 mln	¼ (1 pt./6 mm at 10 m)	4×	360°

**Table 6** Accuracy results after cloud registration

	Cloud to cloud		Target based		
	Mean scan pt tension [mm]	Scan pt tension < 4 mm [%]	N° target	Mean target tension [mm]	St. dev. target tension [mm]
(A)	1.55	79.9	25	7.24	11.25
(B)	3.10	60.40	51	4.57	2.35

and different public events organized for the local community of citizens; these factors plus the inevitable decay of historical structures allow to insert the castle in the list of sites in a condition of middle risk (Fig. 3). Moreover, the castle is located near the Po River (the longest Italian river) and is in an area subjected to potential floods.

The Castello del Valentino starting from the 1977 is also part of the list of World Heritage Sites of UNESCO. The castle was built in the sixteenth century but reached its actual conformation only one century later, when important works of restoration and expansion were ordered to Carlo and Amedeo di Castellamonte from Maria Cristina di Borbone. The castle was partially restored in the second half of the nineteenth century. During the centuries, these important buildings were designated to different functions (residence for noble families, veterinary school, and barracks) until 1906 when they reached its actual destination.

Among the different indoor rooms that compose the castle, the *Gabinetto dei Fiori Indorato* was chosen to be the object of the different acquisitions due to its limited dimensions and its easiness of access. The cabinet of the Castello del Valentino, with its pavilion vault (Fig. 2), is characterized by an abundance of stucco-work and an absence of frescos if compared with the other rooms of the royal apartment. The stucco-work is composed by interlacing plants, branches, and acanthus scrolls, enriched by a bloom of flowers and roses gently protruding from the ceiling. It was realized by Pompeo and Francesco Bianchi in the 1642, probably with the collaboration of Carlo Solaro and Giovanni Casasopra.

**The San Nicola Church (B)**

The building history of the Basilica di San Nicola in Fig. 4 (case study B) is tied with the Italian Saint “San Nicola” that have lived in Tolentino in the second half of the thirteenth century A.D. and that was buried in this ecclesiastic complex. The structure of the basilica was mainly modified between the fourteenth and seventeenth centuries A.D. and nowadays is one of the most important religious and cultural complexes of Central Italy. The whole city of Tolentino and the basilica were slightly damaged by the seismic wave that hit this area of Italy starting from the 24 August 2016, and the religious



**Fig. 7** Zoomed images of the cabinet ceiling: (left) reflex camera; (right) steadicam frame



complex is still closed to the public due to security reason, damage assessment, and restorations (Fig. 5).

The coffered ceiling (Fig. 4), that has been the area of the religious complex chosen to be surveyed, was ordered by the bishop Giambattista Visconti, and its realization ended in the 1628 A.D. after 23 years of work. It is composed by 21 coffers, divided in 7 rows, and hosts the wooden statues of different saints and characters of the gospels (Mariano 2008).

### Data acquisition and processing

As presented in previous paragraphs, the two case studies present at the same time similar characteristics and own peculiar architectural attributes. The main nave of San Nicola church is  $13.5 \times 38.5$  m large (almost  $520 \text{ m}^2$ ); the cabinet is  $5 \times 4$  m large (almost  $20 \text{ m}^2$ ). The main difference between these two elements is related to the distance of the ceiling from

**Fig. 8** Zoomed images of the ceiling in San Nicola church: (left) reflex camera; (right) steadicam frame



**Table 7** Test (A), the Valentino castle cabinet: (S) Osmo+ steadicam and (C) Canon Camera datasets, processing and metric control with RMSE (Root mean square error).

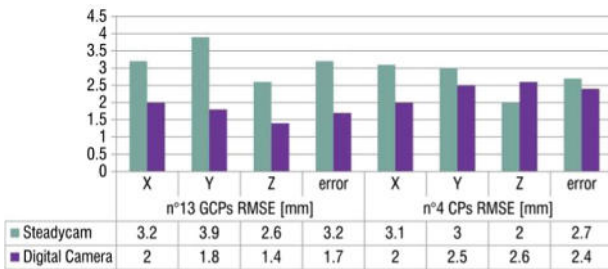
Dataset					
	N° images	Focal length	Camera config.	Shooting distance	Area [m <sup>2</sup> ]
S	314	35	<i>nadiral</i>	3.5	22
C	65	30	<i>nad/oblique</i>	3.5	

Models results				
	GSD [mm/px]	Tie points	Dense cloud	Av. Density [pt/m <sup>2</sup> ]
S	1.04	77 912	13 270 000	591 000
C	0.50	320 000	50 560 000	2 300 000

Metric control								
	n°13 GCPs RMSE [mm]				n°4 CPs RMSE [mm]			
	X	Y	Z	error	X	Y	Z	error
S	3.2	3.9	2.6	3.2	3.1	3.0	2.0	2.7
C	2.0	1.8	1.4	1.7	2.0	2.5	2.6	2.4



the floor: the (A) in the cabinet of Valentino castle is located 4 m high from the floor while the coffered ceiling (B) of San Nicola in Tolentino is located 15 m high.

**Table 8** Test (B), the coffered ceiling in San Nicola church: (S) Osmo + steadicam and (C) Canon Camera datasets, processing and metric control with RMSE (Root mean square error).

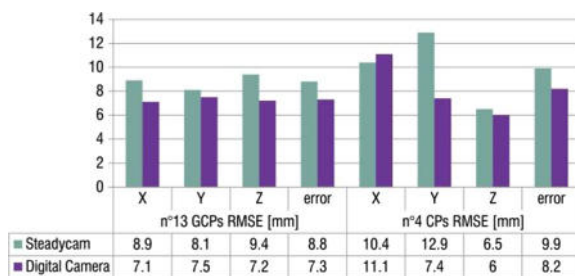
Datasets					
	N° images	Focal length	Camera config.	Shooting distance	Area [m <sup>2</sup> ]
S	328	35	<i>nadir</i>	13	560
C	84	24		14	

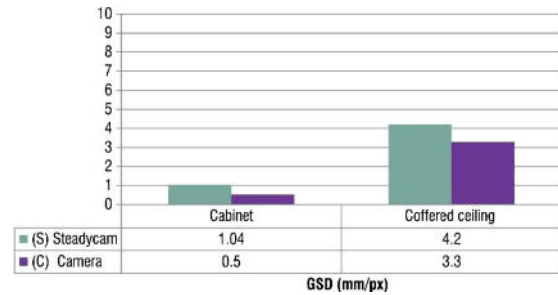
Results				
	GSD [mm/px]	Tie points	Dense cloud	Av. Density [pt/m <sup>2</sup> ]
S	4.20	196 580	16 370 000	29 200
C	3.30	171 000	28 300 000	50 500

Metric control								
	n°13 GCPs RMSE [mm]				n°6 CPs RMSE [mm]			
	X	Y	Z	error	X	Y	Z	error
S	8.9	8.1	9.4	8.8	10.4	12.9	6.5	9.9
C	7.1	7.5	7.2	7.3	11.1	7.4	6.0	8.2



**Table 9** Synthesis of GSD [mm/px] of the 3D models for both the cases study using both photogrammetric approaches



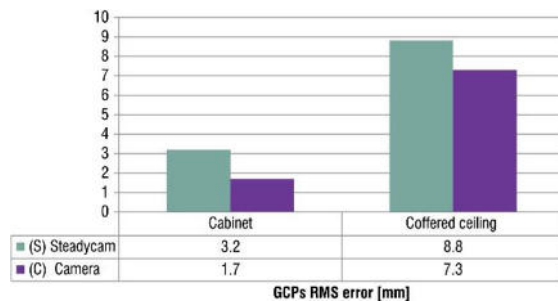
The examination focuses on the ceilings of the two indoor environments: both are richly decorated surfaces, with different materials and techniques decoration yet. The cabinet is decorated with painted stuccos (gold and blue) while the coffered ceiling of San Nicola is made with lacquered woods. Obviously, the two materials reacted differently to the lights and that is a factor that we need to consider during the acquisitions. More specifically, San Nicola was poorly lightened by natural light (so we need to use the illumination system of the church) while for the cabinet, we did not need to use artificial light, thanks to the presence of a lot of natural light. All the factors cited above were considered during the acquisition phase, and consequently, we projected the geometry of the different acquisitions. All the acquisitions were performed without the use of aerial structures such as scaffoldings. The entire datasets derived from the three sensors were processed using standard workflows.

A synthesis of the time factor in the process of data acquisition and processing is shown in Table 4.

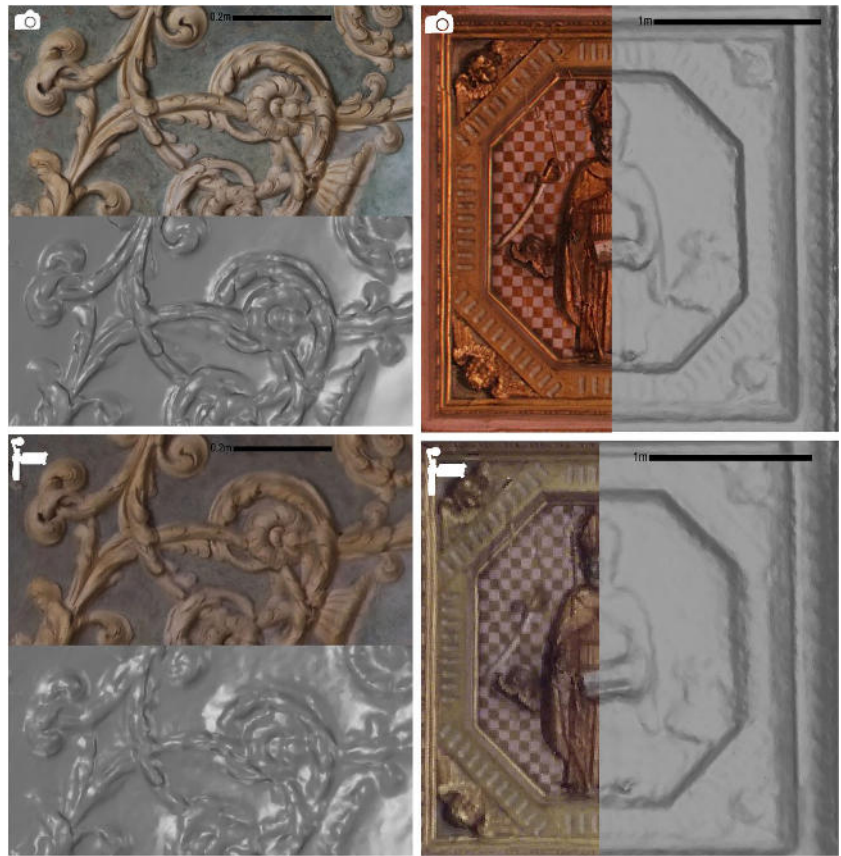
First of all, to make the description more schematic, the laser scanning acquisition will be presented for both the objects, and then a more in-depth section will be dedicated to the two photogrammetric approaches that have been tested on the two cases study.

**(L) Laser scanning** The TLS acquisitions were projected to reach a good coverage (in terms of quantity and quality of information) for both the objects surveyed. To cover the main

**Table 10** Synthesis from Table x and x of RMS error on GCPs [mm] for both the cases study using both photogrammetric approaches

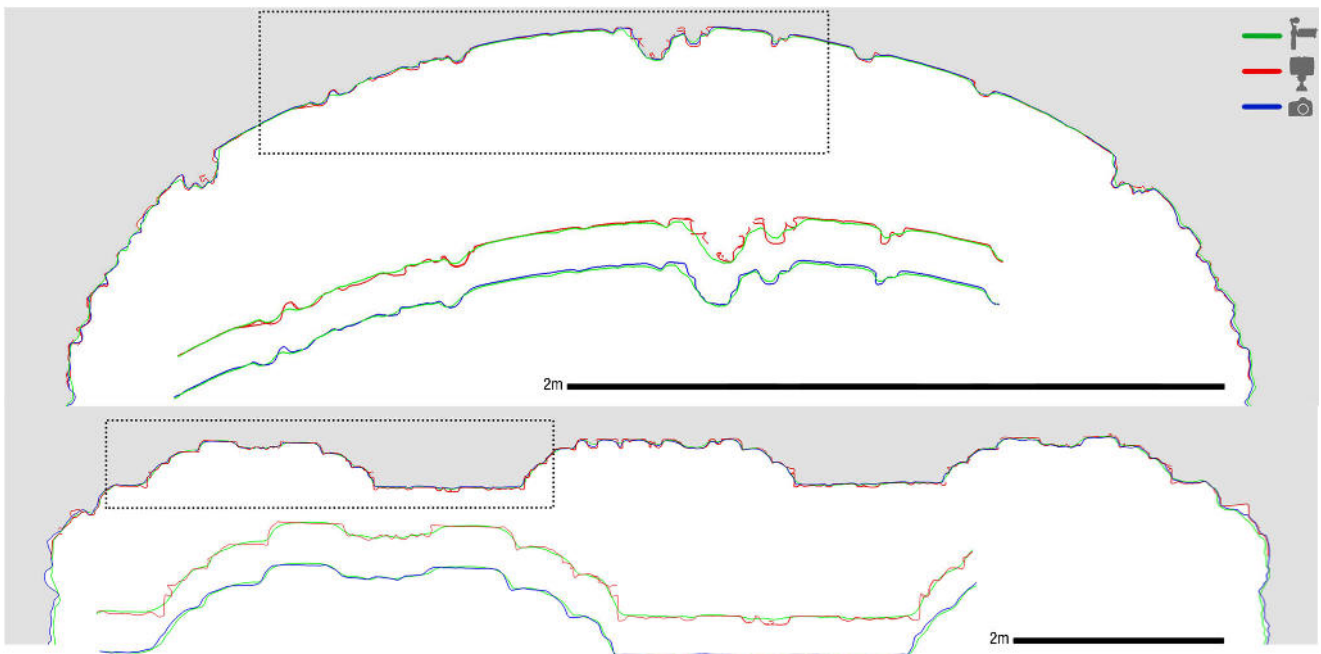


**Fig. 9** Zoomed images on a decorative detail of the two ceilings (A, top), and (B, right column), comparing digital camera and steadicam, with the display of the textured and not textured 3D model

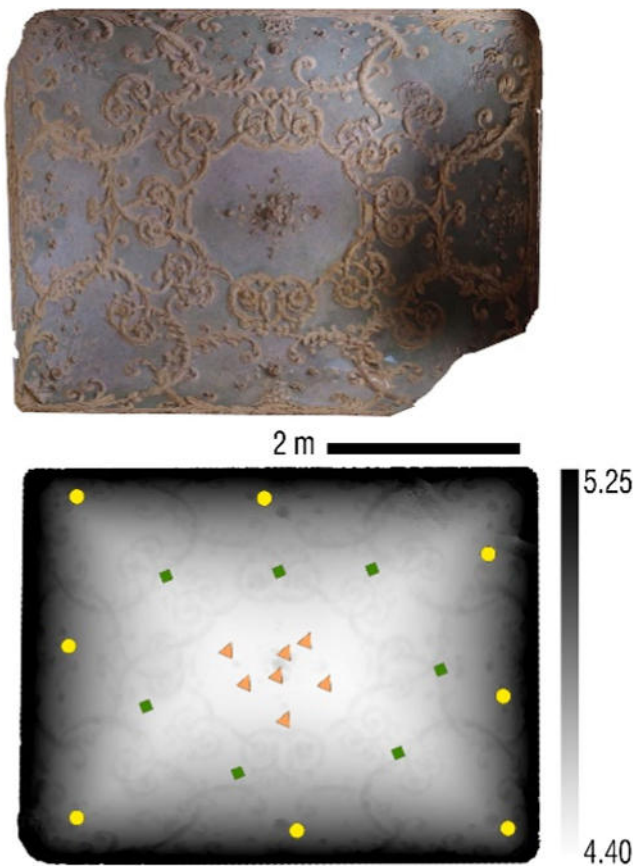


nave of San Nicola church n°30 scans were realized (Fig. 6, red circle); for the cabinet n°5 scans were realized. The scans from TLS were registered using the software Faro SCENE

and through a consolidated process; first, the scans were registered using a cloud-to-cloud approach, and in a second step, they were georeferenced through some control points acquired



**Fig. 10** (next page) Test case (a) up and test case (b) down, in a transversal sections. Three profiles corresponding to the tested sensor are pointed out in colors, and a specific assessment of the Osmo+ (green) is made in zoomed excerpt through appraisal with laser and digital camera



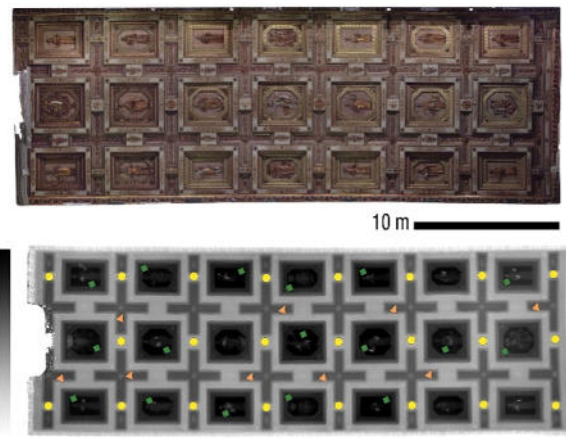
**Fig. 11** Test case (a), orthoimage and DEM in which a set of control points are distributed

by total station (Chiabrando et al. 2016). The results of this process are reported in Table 5 and 6.

**(S) Steadicam photogrammetry** The OSMO acquisitions were performed blocking the Z-axis of the gimbal, with the camera axis parallel to the ceiling and recording a 4-k video at 24 fps (frame per second). Blocking the axis of the gimbal allowed us to stabilize the camera and perform the video acquisition while walking under the ceiling. No oblique video/images were acquired with the OSMO because we want to analyze the results of the most rapid and standard acquisition (nadir) in a grid strip configuration. From the video, a set of frames was extracted to perform the SfM photogrammetric workflow. For the (A) test, the cabinet, the parameter of extraction is 2 frames/s while for the (B) case, frames were extracted at the ratio of 1 frame/s.

**Table 11** Statistic values on control points and combined according to their distribution on the vault surface

	abs mean	st.dev	m	M
<b>all points</b>	0.0041	0.0041	0.0005	0.0214
<b>A</b>	0.0057	0.0063	0.0011	0.0214
<b>B</b>	0.0024	0.0012	0.0005	0.0048
<b>C</b>	0.0040	0.0009	0.0027	0.0057



**Fig. 12** Test-case (B), orthoimage and DEM in which a set of control points are distributed

**Table 12** Statistic values on control points and combined according to their distribution on the coffered ceiling

	abs mean	st.dev	m	M
<b>all points</b>	0.0119	0.0079	0.0000	0.0359
<b>A</b>	0.0086	0.0052	0.0000	0.0208
<b>B</b>	0.0173	0.0092	0.0015	0.0359
<b>C</b>	0.0103	0.0055	0.0028	0.0175

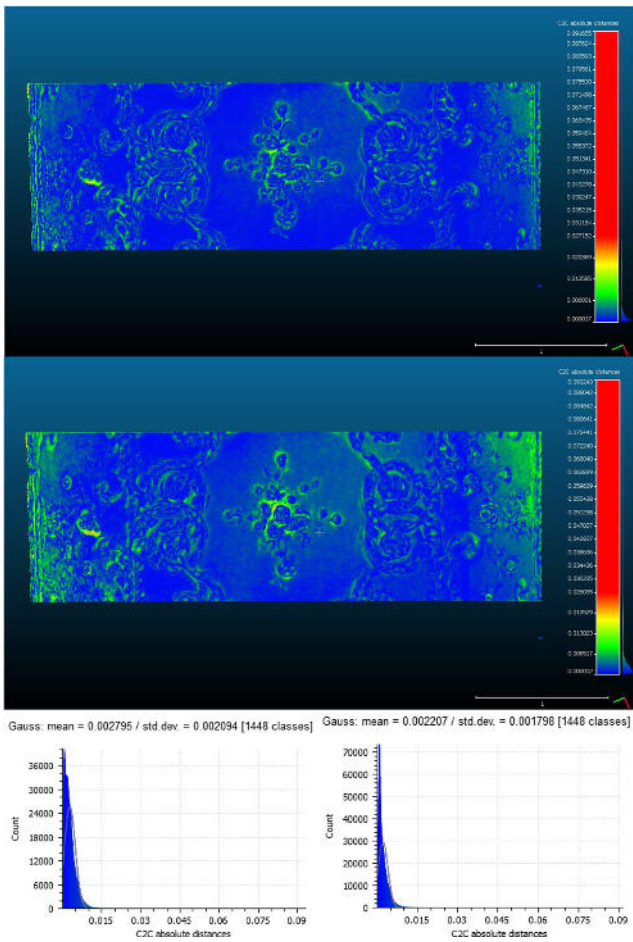
**Table 13** Analysis on the sample area of the (A) case study according to the three sensors

		LiDAR	Digital camera	Steadicam
n° points	Sample	16,256,090	7,567,928	2,094,567
	0.1 m slice	1,567,432	939,116	253,814
Density (pt/V. sfera $r = 0.01$ )	Mean	50,627	29,199	8060
	St. dev.	12,986	5776	1794
Roughness (di/V. sphere $r = 0.1$ )	Mean	0.0054	0.0060	0.0051
	St. dev.	0.0059	0.0056	0.0048

**(C) Digital camera photogrammetry** The tradition photogrammetric acquisitions were realized using a photographic tripod to minimize vibrations and consequently reduce the noise of images. The use of tripod was particular important in the case of San Nicola because of the bad lighting conditions. For both the objects, several stripes of images were realized, both with

**Table 14** Statistical synthesis of the cloud-to-cloud absolute distance computation on (A)

	Mean	St. dev.	m	M
Steadicam VS digital camera	0.0028	0.0021	0.0000	0.0932
Steadicam VS LiDAR	0.0022	0.0018	0.0000	0.0917



**Fig. 13** Test case (a): cloud-to-cloud distance computation and histograms plotting the Gaussian of absolute distances (meters) between point clouds. (top) steadicam VS DSLR and histogram on left; (down) steadicam VS LiDAR and histogram on right

the orientation of the lens axis of camera parallel to the ceiling and both using an inclination of  $\approx 45^\circ$  (Chiabrando et al. 2017a, d) to obtain a more complete reconstruction of the object. The photos were shoot in both RAW and JPG format to perform a radiometric correction before the processing.

Below the comparison of data acquisition for the two photogrammetric approaches (S) and (C) in parallel for each case study

**Table 15** Analysis on the sample area of the (B) case study according to the three sensors

		LiDAR	Digital camera	Steadicam
n° points	Sample	11,332,659	3,272,302	2,259,573
	0.1 m slice	185,450	45,262	30,923
Density (pt/V.sphere $r = 0.01$ )	Mean	2623	521	357.7
	St. dev.	1265	73	49.5
Roughness (di/V.sphere $r = 0.1$ )	Mean	0.0093	0.0072	0.0062
	St. dev.	0.0077	0.0062	0.0052

**Table 16** Statistical synthesis of the cloud-to-cloud absolute distance computation on (B)

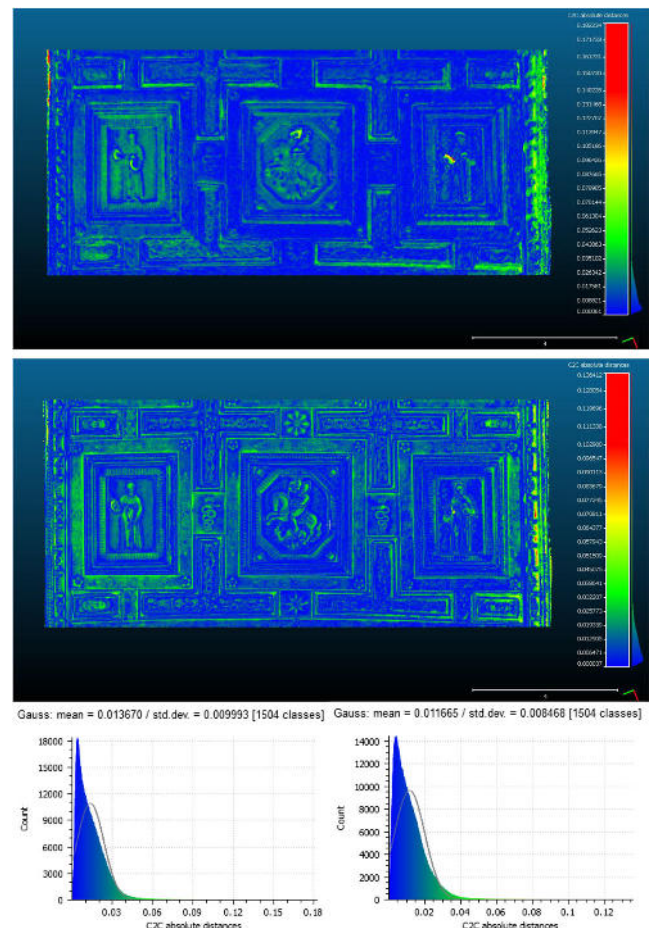
	Mean	St. dev.	$m$	$M$
Steadicam VS digital camera	0.0137	0.010	0.0001	0.1822
Steadicam VS LiDAR	0.0117	0.0085	0.0000	0.1364

(A) and (B) (Figs. 7 and 8), together with elaboration results and metric control on the 3D models performed by topographic control by total station measurements on markers and natural points as ground control points (GCPs) and check points (CPs).

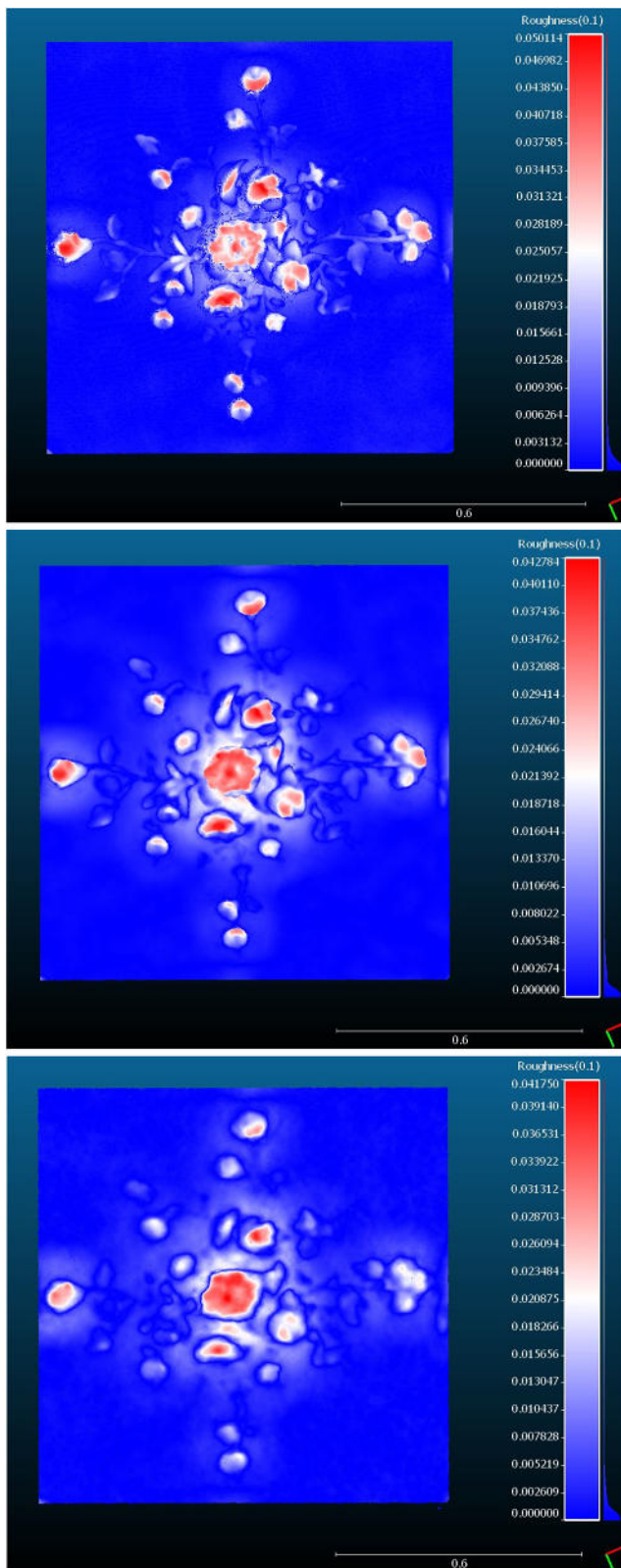
**The Valentino castle cabinet (A)**

**The San Nicola Church (B)**

Summarizing the results about the metric control performed on the two photogrammetric models organized in Tables 7 and 8, the metric resolution and the RMS error con GCPs are reported in graphs below (Tables 9 and 10).



**Fig. 14** Test-case (b): C2C distance computation and histograms plotting the Gaussian of computed absolute distances (meters) between point clouds. (top) steadicam VS DSLR and histogram on left; (down) steadicam VS LiDAR and histogram on right



**Fig. 15** Test case (a) detail: roughness index maps on the three sensors. From top: LiDAR, reflex camera, steadicam. Higher level of roughness index is to correlate to the highest level of detail of the 3D surface, corresponding to that of the most raised areas of the point cloud: the Osmo+ one the least rough but undoubtedly the most smoothed one

The appreciable resolution of the photogrammetric model by steadicam, in Table 9, is strictly related to the geometry of the room and thus of the acquisition one. The model of the cabinet returns a resolution of 1 mm/px (about twice the model produced by reflex camera, 0.5 mm/px) whereas the ground sample distance (GSD) for the coffered ceiling of the basilica is 4.2 mm/px (about only 1.2 times the reflex camera model, 3.3 mm/px), due to both the greatest shooting distance and the different sensor features.

The RMS errors results on CPs (Tables 7 and 8) and GCPs synthesis (Table 10) indicate a good performance of the photogrammetric approach based on steadicam: 3.2 mm for the cabinet (1:8 ratio with the camera model control) and almost 1 cm for the coffered ceiling of the Basilica (1:2 ratio with the camera). All this however is relational to a good architectonic representation scale, up to 1:20 as expected for the digital camera model and almost 1:50 for the steadicam model.

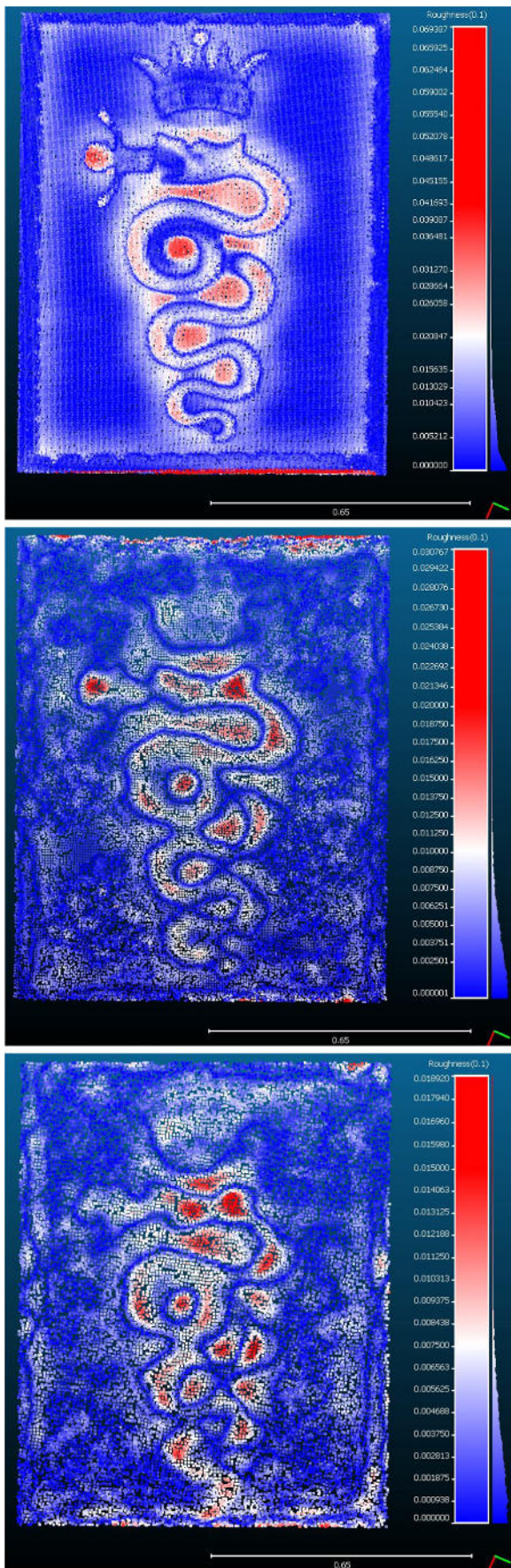
### Multi-scale evaluation of the 3D models: geometric and radiometric comparison

A set of focused analysis are now listed below with the aim of organize a multi-level comparison and weighing of the sensors, especially for the two photogrammetric approaches: the more traditional one with DSLR camera and the experimental one with video frame by Osmo+ steadicam, in comparison with the laser scanner point cloud model. Two levels of investigation are conducted: the first on a sample area of the two ceilings and the second on a small detail of the decoration.

### Orthoimage and digital model

A rigorous comparison of the surfaces from a geometric and radiometric point of view is now carried out first of all in order to test the effective capability of a high-detailed documentation of complex architectonic surfaces. The two sensors are called upon to depict thin decorative details as well as, in case of risk contexts and damaging events, a decay mapping and represent and measure potential cracking traces. The orthoimages and the 3D models (Raster Digital Elevation Model and Triangulated Model), generated using the commercial software PhotoScan by Agisoft, are going to be considered below.

Pointing out again the GSD of the two models is clearly visible in Table 9 the different resolution ratio depending both from the shooting distance and from the sensor size. Nevertheless, the Fig. 9 confirms a good level of detail reached by the steadicam models against the reflex camera ones, that is very satisfactory for mapping and measure in any case a great number of information on the affected surface. A specific assessment on the triangulated mesh and on the DEM is reported below.



**Fig. 16** The (b) detail: roughness index. From top: LiDAR, reflex camera, Osmo+. The photogrammetric densification suffers from bad lighting conditions than the LiDAR one, although the dense roughness index

In Fig. 10, transversal sections, made using the software 3DReshaper, operated in the high-definition triangulated surface. The three profiles corresponding to the sensor are pointed out.

According to the DEM resolution for the Z value, the assessment has been carried out using the software QGIS on a set of control points statistically considered, all together and clustered according to their spatial distribution on the three-dimensionality of the surfaces.

Some reflections must be conducted about these results, which display different performances according to the criticality of the surface on which they have been picked up. The main problem on the cabinet vault in the Valentino Castle (Fig. 11 and Table 11) is the combination of the nadir-shooting configuration, with the projecting rays of the cameras very oblique according to the base curvature (points A) of the pavilion vault and more orthogonal according to the central area of the vault (points B). The wooden coffered ceiling in Tolentino (Fig. 12 and Table 12) has a strong three-dimensionality (almost 1 m depth); the points B area are the ones distributed on the recesses of the paneled ceiling with the decorative apparatus of saints. The points C, at the same time, are distributed on the cruciform decorative wooden profiles of the ceilings with composite engravings.

### A sample area

Now, a test area has been selected in both the cases study, corresponding to a transversal slice of the ceiling: a module made up of three caissons, for the Basilica, and a central portion of the pavilion vault of the cabinet. In this step of the analytical comparison, the point clouds originating from the three sensors have been considered, taking into consideration many geometric features of them: n° of points (in the entire sample and the one contained in a 10-cm slice, in order to absolutize the comparison); density, roughness. Moreover, a *cloud-to-cloud absolute distance computation* was performed using the software CloudCompare: the Osmo+ steadicam 3D model with the reflex cloud and with the LiDAR cloud.

**Table 17** Roughness index on detail in case (A)

	LiDAR	Digital camera	Steadicam
n° points	3,461,344	1,085,839	314,647
Roughness	Media 0.0036	0.0047	0.0041
(dist pt./V.sphere $r = 0.1$ )	st.dev 0.0062	0.0071	0.0062

**Table 18** Roughness index on detail in case (B)

		LiDAR	Digital camera	Steadicam
n° points		170,438	32,056	20,311
Roughness (dist pt./V.sphere $r = 0.1$ )	Media	0.0076	0.0040	0.0034
	St. dev.	0.0073	0.0035	0.0028

**The pavilion vault of the cabinet**

The setting up of the documentation project in such small environment with good light condition lead to expected excellent results of metric and radiometric resolution concerning the more traditional sensors, as presented in paragraph before. However, here is extended and proved the good feedback of the Osmo+ point cloud resolution and accuracy previously tackled yet, and it can be defined as very competitive in terms of geometry, density, and roughness, despite the higher detail of the LiDAR one (Table 13). In the comparison between sensors, St. dev. from models are within the centimeter (Table 14, Fig. 13).

**The coffered ceiling modules**

In case of big scale change, as in Tolentino Basilica, where spaces are larger 30:1 ratio and ceiling distance is tripled, the metric accuracy, as reported before, is lower together with the density of information on the model as well, even though it remains corresponding to the architectonic scale especially toward the Osmo+ model. The surface definition is penalized by shooting distance and strong three-dimensionality of the caissons undercuts and suffers from the lighting condition (Tables 15 and 16).

The assessment between models operated in the same test area along the caissons bas-reliefs allows evaluating the Osmo+ photogrammetric point cloud as average well detailed,

in deficit in case of compared to others consolidate sensors as well (1:6 ratio with LiDAR and 1:4 ratio with Reflex camera), although definitely less affected by roughness (Table 16). However, the discrepancy in terms of absolute distances is not uniform, distributed across the whole area. In case of comparison with LiDAR and DSLR camera, the densification suffers in terms of precision in the ceiling limits, in the grafts on the wall (Fig. 14).

**A focus on a decorative detail**

Two details of comparable area about 1 m<sup>2</sup>, are paralleled in order to examine possible level of detail reached by Osmo+ in case that the documentation needs would be the expected rapid mapping of damages and cracks, where metric/radiometric information are equally significant (Figs. 15 and 16 and Tables 17 and 18).

**The stucco-work floral ornament**

**The crowned snake**

**Conclusion**

The aim of the research is to evaluate the Osmo+ steadicam as low-cost sensor for metric applications and rapid 3D mapping for photogrammetry aims. Therefore, a final assessment is now carried out downstream the analytical workflow presented in this contribution. The characteristic features together with strengths and weakness of the photogrammetric technique by Osmo+ steadicam device are listed below are synthesized in a tabular overview (Table 19).

Surely, the rapidity in image/video acquisition in 4 k, the functionality and user-friendliness of the Osmo+, a light-weight and handily device, are the most significant aspect that define the steadicam as an effective solution for rapid mapping

**Table 19** Synthetic overview of many factors involved in a global evaluation of operational efficiency in use and metric accuracy of results about the tested COTS steadicam together with the other tested sensor

	Price	Acquisition			Processing			Results	
		Autonomy	Acquisition time	Operator work	Hardware work	User Work	Processing time	Detail	Roughness
LiDAR	€€€€€	🔋🔋	🕒🕒🕒	👷👷	🔧🔧🔧	👷👷👷	🌀🌀🌀	📏📏📏 📏📏📏	📍
DSLR camera	€€€€	🔋🔋🔋	🕒🕒	👷👷👷	🔧🔧🔧	👷👷	🌀🌀	📏📏📏 📏📏📏	📍
Osmo+ steadicam	€€	🔋	🕒	👷	🔧🔧🔧	👷👷	🌀🌀	📏📏📏 📏📏📏	📍



of critical environments, regardless of the survey scale. The chance to own one-hand-free to use along walking, the other one for side tasks is not a secondary attribute. The shooting distance and the lighting condition, however, are important factors that significantly influence the quality of 3D models, especially in big complex spaces, or outdoor because of the overexposure in outdoors applications. On the contrary, the reduced angle of sight, the short battery life, and the gimbal stability that often needs recalibration are crucial aspect, which the operator has to take into consideration in a successful operative work. Nevertheless, the price is very competitive (600–1000\$ for the base configuration or accessories, up to 2000–3000\$ for the extreme stabilization with full accessories pack).

As far as functionality in acquisition and data processing is concerned, the reached detail is very competitive compared to the DSLR camera, as well as the metric accuracy. Despite these aspect, there is to consider the context of use. In case of emergency or middle risk, the importance of time-cost ratio and metric accuracy is important together with the operator's occupancy of the spaces. The metric and radiometric contribution to the 3D documentation of local condition is crucial, and the use of a steadycam is resulted suitable for expectations and much more than acceptable in the final evaluation.

**Acknowledgments** The authors would like to express their gratefulness to DIRECT team members and tutors, especially Nannina Spanò and Filiberto Chiabrande, for the operative fieldwork in the Basilica of San Nicola and their nonstop attention in a constant guidance. The authors would also like to thank to the Tolentino municipality and the Architecture Faculty of Politecnico di Torino in Valentino Castle and the operative task force of Politecnico di Torino for the financial support of the missions in the area of Central Italy.

**Open Access** This article is distributed under the terms of the Creative Commons Attribution 4.0 International License (<http://creativecommons.org/licenses/by/4.0/>), which permits unrestricted use, distribution, and reproduction in any medium, provided you give appropriate credit to the original author(s) and the source, provide a link to the Creative Commons license, and indicate if changes were made.

## References

- Balletti C, Guerra F, Scocca V, Gottardi C (2015) 3D integrated methodologies for the documentation and the virtual reconstruction of an archaeological site. *Int Arch Photogramm Remote Sens Spatial Inf Sci* 40(5):215–222. <https://doi.org/10.5194/isprsarchives-XL-5-W4-215-2015>
- Bosse M, Zlot R, Flick P (2012) Zebedee: design of a spring-mounted 3D range sensor with application to mobile mapping. *IEEE Trans Robot* 28(5):1104–1119. <https://doi.org/10.1109/TRO.2012.2200990>
- Brocchini D, Chiabrande F, Colucci E, Sammartano G, Spanò A, Teppati Losè L, Villa A (2017) The geomatics contribution for the valorisation project in the Rocca of San Silvestro landscape site. *Int Arch Photogramm Remote Sens Spatial Inf Sci* XLII-5/W1: 495–502 ISSN 2194–9034
- Chiabrande F, Di Pietra V, Lingua A, Maschio P, Noardo F, Sammartano G, Spanò A (2016) TLS models generation assisted by UAV survey. *Int Arch Photogramm Remote Sens Spatial Inf Sci* XLI-B5:413–420 ISSN 2194–9034
- Chiabrande F, Lingua A, Maschio P, Teppati Losè L (2017a) The influence of flight planning and camera orientation in UAVs photogrammetry. a test in the area of Rocca San Silvestro (LI), Tuscany. *Int Arch Photogramm Remote Sens Spatial Inf Sci* XLII-2/W3:163–170 ISSN 2194–9034
- Chiabrande F, Naretto M, Sambuelli L, Spanò AT, Sammartano G, Teppati Losè L (2017b) The 4DILAN project (4th dimension in landscape and artifacts analyses). *Int Arch Photogramm Remote Sens Spatial Inf Sci* XLII-2/W3:227–234. <https://doi.org/10.5194/isprs-archives-XLII-5-W1-227-2017>
- Chiabrande F, Sammartano G, Spanò A (2017c) A comparison among different optimization levels in 3D multi-sensor models. A test case in emergency context: 2016 Italian earthquake. *Int Arch Photogramm Remote Sens Spatial Inf Sci* XLII-2/W3:155–162 ISSN 2194–9034
- Chiabrande F, Spanò A, Sammartano G, Teppati Losè L (2017d) UAV oblique photogrammetry and LiDAR data acquisition for 3D documentation of the Hercules fountain. *Virtual Archaeol Rev* 8(16):83–96 ISSN 1989–9947
- D'Annibale E, Tassetti AN, Malinverni ES (2013) From panoramic photos to a low-cost photogrammetric workflow for cultural heritage 3D documentation. *Int Arch Photogramm Remote Sens Spatial Inf Sci* XL-5/W2:213–218
- Dà-Jiāng Innovations Science and Technology Co., Ltd (2017) OSMO - Specifications, FAQ, videos tutorials, manuals, reimagine movement - DJI. Retrieved 8 June 2017 from DJI - The Future Of Possible: <http://www.dji.com/osmo>
- Das J, Cross G, Qu C, Makineni A, Tokekar P, Mulgaonkar Y, Kumar V (2015) August. Devices, systems, and methods for automated monitoring enabling precision agriculture. In *Automation Science and Engineering (CASE), 2015 I.E. International Conference on* (pp 462–469). IEEE
- Fiorillo F, Limongiello M, Fernández-Palacios BJ (2016) Testing GoPro for 3D model reconstruction in narrow spaces. *IMEKO-ACTA-05(2016)-02-09*. [https://doi.org/10.21014/acta\\_imeko.v5i2.372](https://doi.org/10.21014/acta_imeko.v5i2.372)
- Gruen A (2009) Image-based 3D recording and modeling of landscapes and large cultural heritage sites. *ARCHAIA-Case Studies on Research Planning, Characterization, Conservation and Management of Archaeological Sites*
- Harwin S, Lucieer A (2012) Assessing the accuracy of georeferenced point clouds produced via multi-view stereopsis from unmanned aerial vehicle (UAV) imagery. *Remote Sens* 4(6):1573–1599
- Kolev K, Tanskanen P, Speciale P, Pollefeys M (2014) Turning mobile phones into 3D scanners. *IEEE Conference on Computer Vision and Pattern Recognition (CVPR)*, pp 3946–3953. <https://doi.org/10.1109/CVPR.2014.504>
- Koutsoudis A, Vidmar B, Ioannakis G, Arnaoutoglou F, Pavlidis G, Chamzas C (2014) Multi-image 3D reconstruction data evaluation. *J Cult Herit* 15(1):73–79. <https://doi.org/10.1016/j.culher.2012.12.003>
- Kwiatk K, Tokarczyk R (2015) Immersive photogrammetry in 3D modelling. *Geomatics Environ Eng* 9(2):51–62
- Lerma JL, Seguí AE, Cabrelles M, Haddad N, Navarro S, Akasheh T (2011) Integration of laser scanning and imagery for photorealistic 3D architectural documentation. INTECH Open Access Publisher. <https://doi.org/10.5772/14534>
- Mariano F (2008) *Soffitto Ligneo. La Basilica di San Nicola a Tolentino. Guida all'arte e alla storia*. Edited by Centro studi "Agostino Trapè", Biblioteca Egidiana, pp 63–65

- Micheletti N, Chandler JH, Lane SN (2014) Investigating the geomorphological potential of freely available and accessible structure-from-motion photogrammetry using a smartphone. *Earth Surf Process Landf* 40:473–486. <https://doi.org/10.1002/esp.3648>
- Nocerino E et al (2017) A smartphone-based 3D pipeline for the creative industry—the REPLICATE EU project. *Int Arch Photogramm Remote Sens Spatial Inf Sci XLII-2/W3:535–541*. <https://doi.org/10.5194/isprs-archives-XLII-2-W3-535-2017>
- Pérez Ramos A, Robleda Prieto G (2016) Only image based for the 3D metric survey of gothic structures by using frame cameras and panoramic cameras. *Int Arch Photogramm Remote Sens Spatial Inf Sci XLI-B5:363–370*. <https://doi.org/10.5194/isprsarchives-XLI-B5-363-2016>
- Remondino F, Spera MG, Nocerino E, Menna F, Nex F (2014) State of the art in high density image matching. *Photogramm Rec* 29(146): 144–166. <https://doi.org/10.1111/phor.12063>
- Waldhäusl P, Ogleby CL, Lerma JL, Georgopoulos A (2013) 3x3 rules for simple photogrammetric documentation of architecture. URL: [http://cipa.icomos.org/wp-content/uploads/2017/02/CIPA\\_\\_3x3\\_rules\\_\\_20131018.pdf](http://cipa.icomos.org/wp-content/uploads/2017/02/CIPA__3x3_rules__20131018.pdf)
- Westoby MJ, Brasington J, Glasser NF, Hambrey MJ, Reynolds JM (2012) Structure-from-motion photogrammetry: a low-cost, effective tool for geoscience applications. *Geomorphology* 179:300–314. <https://doi.org/10.1016/j.geomorph.2012.08.021>