

Bibliometric Indicators: Why Do We Need More Than One?

Original

Bibliometric Indicators: Why Do We Need More Than One? / Setti, Gianluca. - In: IEEE ACCESS. - ISSN 2169-3536. - ELETTRONICO. - 1:(2013), pp. 232-246. [10.1109/ACCESS.2013.2261115]

Availability:

This version is available at: 11583/2696569 since: 2018-02-28T10:29:23Z

Publisher:

Institute of Electrical and Electronics Engineers Inc.

Published

DOI:10.1109/ACCESS.2013.2261115

Terms of use:

This article is made available under terms and conditions as specified in the corresponding bibliographic description in the repository

Publisher copyright

IEEE postprint/Author's Accepted Manuscript

©2013 IEEE. Personal use of this material is permitted. Permission from IEEE must be obtained for all other uses, in any current or future media, including reprinting/republishing this material for advertising or promotional purposes, creating new collecting works, for resale or lists, or reuse of any copyrighted component of this work in other works.

(Article begins on next page)

Bibliometric Indicators: Why Do We Need More Than One?

GIANLUCA SETTI, (Fellow, IEEE)

Department of Engineering (ENDIF), University of Ferrara, Ferrara 44100, Italy, and also with the Advanced Research Center on Electronic Systems, University of Bologna, Bologna 40125, Italy (gianluca.setti@unife.it)

ABSTRACT This paper provides an overview of the main features of several bibliometric indicators which were proposed in the last few decades. Their pros and cons are highlighted and compared with the features of the well-known impact factor (IF) to show how alternative metrics are specifically designed to address the flaws that the IF was shown to have, especially in the last few years. We also report the results of recent studies in the bibliometric literature showing how the scientific impact of journals as evaluated by bibliometrics is a very complicated matter and it is completely unrealistic to try to capture it by any single indicator, such as the IF or any other. As such, we conclude that the adoption of more metrics, with complementary features, to assess journal quality would be very beneficial as it would both offer a more comprehensive and balanced view of each journal in the space of scholarly publications, as well as eliminate the pressure on individuals and their incentive to do metric manipulation which is an unintended result of the current (mis)use of the IF as the gold standard for publication quality.

INDEX TERMS Bibliometrics, impact factor, journal ranking, Eigenfactor, popularity indicators, prestige indicators, research evaluation.

I. INTRODUCTION

By its very definition, *bibliometrics* is a set of methods to quantitatively analyze scientific and technical literature. As such, when used in research assessment, the purpose of bibliometric indicators is to quantify the performance and/or impact of a *large set* of scholarship products (referred to, in the following, also as “research products” or simply as “papers”). The ideal process to perform such an evaluation would simply be to rely on the very same analysis one uses for assessing the quality of a *single* paper: asking independent peer experts to read all products and score their impact. Regrettably, such direct assessment cannot scale to the current (and increasing) rate of production and volume of research products.

Since product quality cannot be directly evaluated, one therefore needs a suitable measurement proxy, the most widely accepted being *citation analysis*, which is based upon the assumption that a citation (from another scholarship product) is a positive reflection on the scientific quality of a paper. Such a choice is not immune from criticism [1], e.g., citation count is unable to distinguish between positive citations to seminal work and negative citations to poor work or incorrect results; furthermore it is also unable to discern between rhetorical citations, added as simple pointers to a

specific area, and those with a true meaning of scientific remuneration. Notwithstanding these flaws, citation count undoubtedly still remains the most accepted approach by the scientific community.

It is however worth stressing that alternative indicators have recently been proposed, such as the number of on-line views or downloads [2] and the number of hits in scientific on-line bookmarking tools as Zotero and Mendeley [3]. They have attracted an increasing burst of interest, and first studies have recently appeared offering initial validation of their capabilities of measuring scientific impact [4]; despite very promising they are not yet mature enough to be considered as valid alternatives to more classical, citation-based, journal indicators.

The crude number of citations can be directly employed as a proxy for the quality of a single paper, but such counts must be *aggregated and averaged* to obtain indicators of the scientific impact of a journal. Indeed, such indicators are used widely by librarians for ranking, evaluating, categorizing, and comparing **journals**.¹ Each metric has its own particular

¹We wish to stress that the scope of this paper is indeed to consider an overview of journals indicators as a way to measure journal impact. Other use (and most often misuse) of these indicators will not be considered here apart briefly in the concluding section.

TABLE 1. List of acronyms and principal symbols used in this paper with the corresponding significance.

Acronym/Symbol	Description
IF	Impact Factor (Popularity Index)
5YIF	Five Year Impact Factor (Popularity Index)
SNIP	Source Normalized Impact per Paper (Popularity Index)
JFIS	Journal to Field Impact Score (Popularity Index)
EF	Eigenfactor (Prestige Index)
AI	Article Influence (Prestige Index)
SJR	Scimago Journal Rank (Prestige Index)
AF	Audience Factor (Prestige Index)
IW	Influence Weight (Prestige Index)
PR	Page Rank
JCR	Journal Citation Reports
PCA	Principal Component Analysis
IJHE	International Journal of Hydrogen Energy
LPB	Lasers and Particles Beams
CO	Cortex
IJNSNS	International Journal of Nonlinear Science and Numerical Simulation
$\%SC_j^{IF}$	Percentage of self-cites used for IF computation in journal i
R_j^{IF}	Rate of self-cites used for IF computation in journal i
Y_n	year n
Δ_α	A time period α expressed by a given set of years
$C_{ij}^{\Delta_\beta \Delta_\alpha}$	Citations given to papers published in journal j in period Δ_α by papers published in journal i in period Δ_β
$P_i^{\Delta_\alpha}$	Papers published in journal i in period Δ_α
$C_{i \rightarrow}^{\Delta_\beta \Delta_\alpha}$	Total citations given by journal i in period Δ_β to all other journals in the database published in period Δ_α
$C_{\rightarrow j}^{\Delta_\beta \Delta_\alpha}$	Total citations received by journal j in period Δ_α originating by all journal in the database published in period Δ_β

features, but in general, they have all been designed to provide rankings of and insight into journal quality based on citation analysis. Ideally, any indicator should meet at least these three fundamental criteria:

- *It should reflect the true scientific quality of a journal.* Highly respected publications, such as *Science* or *Nature* will have a much higher indicator than a low-reputation “Journal of Obscurity”;
- *It should be consistent over time.* Because publication reputations build over many years, an accurate index should not exhibit large fluctuations over a limited time period;
- *It should be very robust (and possibly immune) to external manipulation.* Explicit actions creating an index increase not corresponding to an increase in the actual quality of the journal should be difficult (if not impossible) to implement.

In the last half century, many measures have been proposed, each aiming to fulfill the three requirements given above. While a complete taxonomy is beyond the scope of this manuscript, we provide descriptions and analyses of ten such measures which have attracted greater attention, focusing in particular on the six which are currently computed in the Thomson Journal Citation Reports (JCR) [5] and in

Scopus [6]. The definitions and properties of these indexes are reported in the Appendix.

The manuscript makes a *qualitative comparison of different bibliometric indicators* and is organized as follows. In Section II we describe features and flaws of the most widespread (and misused) bibliometric indicator, namely the Impact Factor (IF) [7], [8]. Section III reports the main features of the most widely employed alternatives to the IF, highlighting their advantages and differences with respect to it, as well as introducing the important distinction between *popularity* and *prestige* measures. Section IV explores what information on such journal quality one may hope to extract from the indicators and highlights that the quality of a journal is sufficiently complicated that *it cannot be measured by any single indicator*. Conversely, the multiple indicators offer a more balanced perspective on journals impact and we will show that they may even be employed as warning of the possible existence of manipulative practices. Finally, Section V presents conclusions and Table 1 reports, for the readers’ quick reference a list of all acronyms used through the manuscript.

II. THE IMPACT FACTOR AND ITS FLAWS

The IF [7], [8] (c.f. Appendix part A) introduced by Garfield in 1972 as a measure of journal impact and computed by nor-

malizing the expected relationship between journal size and number of received citations is certainly the most widespread and well known among the bibliometric indexes, but is also the simplest and most crude. Commonly mentioned flaws² of the IF are:

- i) the absence of normalization for different citation practices and traditions in the various scientific areas [11], or of the distinction of the “quality” of the journal which is the source of each citation [13];
- ii) the bias caused by the choice of the 2-year time window for collecting article citations; as Garfield himself in fact pointed out [14], by changing the “2-year based period to calculate impact, some kinds of journals are found to have higher impact;”
- iii) the lack of transparency in the data used for its computation;
- iv) the relative liability of the IF with respect to active manipulation practices [15], since:
 - a) IF is generated from citations from (and to) all content, including non peer-reviewed content like editorials. Such content does not count in the denominator of the IF (being non-citable) but can inflate the numerator;³
 - b) IF counts *self-citations* (citations from a given journal to itself), which creates a very favorable condition for the editors of journals (and possibly others involved in their management) to engineer its value by artfully placed self-citations [16], [17].

The first two criticisms are both self-explanatory and fairly straightforward to address in a computational manner (c.f. Section III). As to point iii) Thomson uses proprietary data for IF computation, which are not audited and have exhibited many inconsistencies, as shown by [25]–[28], where attempts to replicate or to predict the reported values have generally failed. Problem iv-a) of citations to non peer-reviewed content can also be addressed computationally, as explained again in Section III, but the criticism iv-b) is more subtle since it may also extend to the area of ethical misconduct where both numerical evidence and survey-based studies provide indications of the existence of the problem, as is explained in details in the following Subsections.

A. SOME TRENDS IN JOURNAL SELF-CITATIONS

Appropriate use of self-citations is a complex issue, since they cannot and should not be considered as a negative practice per se. On the contrary, a large number of self-citations can be reasonably expected when high-impact journals are the submission target, especially when there is a single top-level publication which is the reference target of a small com-

²We will not consider here other criticisms related to the consistency of the data base (e.g., the accuracy of data capture, [9]) or the coverage of the data base (all-inclusive vs quality-based inclusive, [10]), since these factors will uniformly affect, *ceteris paribus* any bibliometric indicator.

³The most spectacular effect of such non-peer reviewed content was a 43% increase in the 1992 IF of the *Lancet* [48].

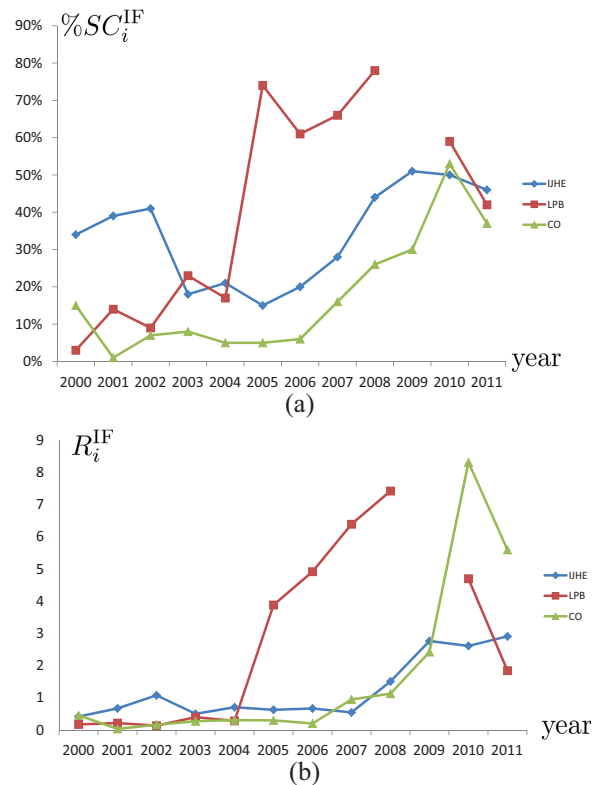


FIGURE 1. (a) Percentages of self-citations used in the IF calculation $\%SC_i^{IF}$ and (b) number of self-citations used in the IF calculation per published paper R_i^{IF} in the period 2000–2011 for IJHE (SC: Energy & Fuels; Environmental Sciences, Physics, Atomic, Molecular & Chemical; Chemistry, Physical), Laser and Particle Beams (LPB) (SC: Physics, Applied) and Cortex (CO) (SC: Behavioral Science; Neuroscience). LPB evaluation is absent in 2009 since Thomson decided to suspend the journal from the JCR due to the excessive influence of self-cites.

munity. Furthermore, authors can be naturally expected to cite their own previous work in the same area, and it is also reasonable to expect that authors publishing in high impact journals are more experienced and successful, and possess a long track record of publications in the same venue in which they are publishing. Often, these authors are also part of large groups which leads to a multiplicative effect for this phenomenon.

Yet, inconsistent and/or inexplicable increases in self-citations for several journals across different scientific areas suggest that deliberate IF manipulation (such as those in Subsection II-B) may indeed exist and be of increasing extension. Figure 1-(a) reports the percentage of self-cites ($\%SC_i^{IF}$ for journal i) used for the computation of the IF from 2000 to 2011 for three different journals: the *International Journal of Hydrogen Energy* (IJHE), *Laser and Particle Beams* (LPB) and *Cortex* (CO). Each of them belongs to one or more Subject Categories (SC) in very different scientific areas, namely *Energy & Fuels*, *Environmental Sciences*, *Physics*, *Atomic, Molecular & Chemical* and *Chemistry, Physical* for IJHE; *Physics*, *Applied* for LPB; and *Behavioral Science* and *Neuroscience* for CO. An increasing trend is clearly

present, sometimes with dramatic jumps. Of course, there is no evidence in these cases of coercive practices aiming at acquiring self-citations, so that their presence could be due to fully legitimate reasons such as those mentioned above. Also, it is difficult to determine how many journals exhibit similar trends in the scholarly publishing arena and therefore to appreciate the extent of this phenomena. Yet, both the large slope of and the very high peak (78% in 2008) reached by LPB caused Thomson to temporarily suspend the journal in 2009 due to the excessive number of self-cites [51], [52]. The journal was reinstated in the 2010 JCR once the level of self-cites dropped to more “normal” values according to Thompson.⁴

The conclusions of the above paragraph are even further strengthened by Figure 1-(b) which shows for the same 3 journals the trend of the self-citation rate R_i^{IF} per published paper for journal i used in the IF calculation, namely, by using the notation of the Appendix and for a given year Y_n ,

$$R_i^{\text{IF}} = \frac{c_{ii}^{\Delta_2 \Delta_1}}{p_i^{\Delta_2}}$$

where $c_{ii}^{\Delta_2 \Delta_1}$ is the number of self-cites of journal i to articles published in years in set $\Delta_1 = \{Y_{n-2}, Y_{n-1}\}$ from papers published in year $\Delta_2 = \{Y_n\}$, and $p_i^{\Delta_2}$ is the number of papers published in year set Δ_2 . In other words, R_i^{IF} represents the average number of self-cites included in the reference list of each paper published by journal i in year n which enter the IF computation; with respect to $\%SC_i^{\text{IF}}$, coefficient R_i^{IF} has the advantage to represent the influence on IF of the behavior of each journal, normalized to its size. Interestingly enough, R_i^{IF} shows a trend which is (at least until 2008) almost perfectly monotonically increasing, and the peak value of R_i^{IF} for CO in 2010 is larger than the one of LPB in 2008 which could be also seen as potential indication of a similar problematic self-citation pattern.

B. ETHICAL ISSUES

As far as ethical misconduct is concerned, the use of self-citations to manipulate IFs has been reported in the last decade in the areas of psychology [16] and medicine [18], and has more recently been shown to be spreading in the area of mathematics. In the latter area, [19] showed how self-citations manipulation (along with other unethical behavior such as editorial board members using their own conference papers to boost the citation counts) allowed the *International Journal of Nonlinear Sciences and Numerical Simulation* (IJNSNS) to dominate the IF ranking in the *SC Mathematics, Applied*, where it took first place from 2006 to 2009 (generally by a wide margin), and second place in 2005.

Most recently, [20] conducted a survey-based study to establish the level of “coercive self-citation” exhibited by

⁴Thomson maintains a list of suppressed titles which are those that “were found to have anomalous citation patterns resulting in a significant distortion of the IF, so that the rank does not accurately reflect the journal’s citation performance in the literature.” [51], [52]

Editors-in-Chief of 832 journals in the areas of economics, sociology, psychology, and multiple business disciplines. Out of the 54,000 requests sent, as reported also in [21], authors of [20] received 6672 responses in which 480 authors identified 175 journals as coercers, most of which were named only once, and eight of which ten or more times. Editors were more likely to coerce early-career scientists and to target papers with a small number of authors. Furthermore, [20] found that journals published by for-profit organizations exhibited this practice more often than academic publishers. Finally, coercive actions were found to be concentrated by area, since editors are more likely to coerce citations if this is a more common practice among journals in their domain. The authors of [20] concluded that “*without action, the situation is likely to deteriorate, because the strategic nature of coercion continues to put pressure on editors to coerce. Academic associations could help by officially condemning the practice. Their action would raise the cost of coercion to editors and might help persuade organizations that promote impact factors to remove self-citations from those calculations, which would eliminate the coercive motive.*” As reported in [21], however, the Editor-in-Chief of the journal found most coercing in [20], namely the *Journal of Business Research* (JBR) (see also Table 2), stated that they ask authors to scan the literature and discuss and cite relevant JBR articles if they exist, a practice that does not correspond to what [20] defines coercive citation. According to [21] this “*apparent discrepancy points out the large grey area that exists between coercion and advice on useful articles to add*” to set the paper in perspective for the journal readership.

It is worthy of further study to determine whether specific cases of ethical misconduct such as that reported about the IJNSNS and in the journals found to be coercers in [20] possess similar self-citation patterns as reported in Subsection II-A. The supporting material of [20] includes also the list of the coercing journals, and names 93 publications which were reported as coercer once, 31 twice, 18 three times, 7 four times, 6 five times, 8 six times, 2 seven times, 1 eight times and nine times each, and 8 ten or more times. Table 2 reports the values from 2008–2011 of the coefficients $\%SC_i^{\text{IF}}$ and R_i^{IF} for the 6 titles which were both among the ten top most coercers in [20] and which are also included in the JCR. Despite the difficulty in drawing strong conclusions from such a reduced set of data, Table 2 indicates that not surprisingly the number of coercions appears to correlate better with the self citation rate R_i^{IF} than with the percentage of self-cites $\%SC_i^{\text{IF}}$ (the latter of which, as highlighted in Subsection II-A, also depends on the number of citations from external sources, i.e., not only on the behavior of the journal itself w.r.t. self-cites). Also, a large number of coercions does not seem to correspond to any particularly unusual trend in the either for $\%SC_i^{\text{IF}}$ or R_i^{IF} in all but the case of the *Journal of Retailing* and, even more so the *Journal of Consumer Psychology* whose self-citation pattern was considered so critical by Thomson to cause its exclusion from the 2011 JCR. These findings support the opinion, reported in [21], of Phil Davis,

TABLE 2. Self-citations level in terms of percentage of self-cites $\%SC_i^{IF}$ and self-citation rate (i.e., per paper) R_i^{IF} for the journals which were both among the ten most coercing journals in [20] and appeared in the Thomson JCR. SUP indicates that the title was suppressed in the JCR by Thomson for that year.

Name of the journal	# coercions	2008		2009		2010		2011	
		$\%SC_i^{IF}$	R_i^{IF}	$\%SC_i^{IF}$	R_i^{IF}	$\%SC_i^{IF}$	R_i^{IF}	$\%SC_i^{IF}$	R_i^{IF}
Journal of Business Research	49	10%	0.20	12%	0.28	25%	0.75	23%	1.28
Journal of Retailing	43	73%	5.40	66%	5.86	34%	1.64	44%	1.80
Marketing Science	29	43%	1.86	28%	1.11	29%	1.10	28%	1.40
Applied Economics	18	21%	0.16	11%	0.08	4%	0.03	15%	0.12
Academy of Management Journal	14	9%	1.29	7%	0.96	8%	0.76	4%	0.59
Journal of Consumer Psychology	9	45%	3.60	68%	3.37	75%	3.00	SUP	SUP

TABLE 3. Self-citations level in terms of coefficients $\%SC_i^{IF}$ and R_i^{IF} for the IJNSNS since its insertion in the Thomson JCR. The data in 2011 are 0% and N/A as no data is reported in the JCR for the number of papers published in 2011 (so that also the number of self-cites is 0); IJNSNS was regularly published in 2011 and the journal is not banned from the JCR since it can be accessed on line and is not present in the list [51].

	2003	2004	2005	2006	2007	2008	2009	2010	2011
$\%SC_i^{IF}$	40%	17%	35%	27%	17%	7%	29%	36%	0%
R_i^{IF}	0.77	0.40	1.26	1.48	1.57	1.84	1.47	1.35	N/A

a scholarly-publishing consultant and regular columnist of the *Scholarly Kitchen* [22], who “worries that survey biases may have affected the numbers” even if “ultimately you can say that the behaviour exists and that it’s a problem at a few journals”.

The data pertaining to IJNSNS are reported in Table 3. Even if $\%SC_i^{IF}$ can be generally considered to be relatively large, in 2005-2009 when most of the issues highlighted in [19] took place, it has a concave trend with minimum in 2008. This is not surprising since the potentially unethical practice involved citations coming from other sources, mainly related conferences, which cannot be detected by performing this analysis. Interestingly, the trend in R_i^{IF} reveals an increase after 2004, even if the ultimate values are not large enough to reach any strong conclusion in the absence of additional evidence such as that reported in [19].

III. ALTERNATIVES TO THE IF: POPULARITY VS PRESTIGE MEASURES, AND THEIR COMPUTATIONAL FEATURES

To both offer a solution to the IF’s flaws mentioned in Section II and to complement the information attainable from the IF itself, a plethora of alternative bibliometric indicators have been proposed over the last 30 years. Table 4 lists the IF along with 8 of these indexes, their acronyms, and the data bases from which citations are acquired to compute them. A summary of the indexes’ properties used in computation and features is given in Table 4, while the definitions and complete description of their peculiarities are reported in the Appendix.

In this section, we will discuss their main properties and how they address the three requirements of an index mentioned in the Introduction as well as they cope with the IF’s flaws. We will also draw attention to the aspects which will allow us to highlight the pros and cons of each of them in Section IV. In order to provide quick indexing for the

reader, the primary properties are highlighted in bold and underlined fonts at the beginning of each paragraph; furthermore the reading of this section assumes at least familiarity with the introductory definitions of the first paragraph of the Appendix.

Time window. A reduction of bias caused by the IF’s limited two-year time window is achieved by increasing the citation window to either three years for both the *Source Normalized Impact per Paper* (SNIP) [29] and the *Scimago Journal Rank* (SJR) [30], or to five years for the *Five Year Impact Factor* (5YIF), the *Journal to Field Impact Score* (JFIS) [32], the *Audience Factor* (AF) [31], the *Influence Weight* (IW) [11], the *Eigenfactor* (EF) and the *Article Influence* (AI). [33]–[35]. Clearly, **this addresses point ii) in Section II-A.**

Quantifying popularity or prestige. A second and very important difference [24] is between indexes measuring *popularity* and those measuring *prestige*. These two concepts are based on the distinctions between the two factors which contribute to determine the status of an element in a social network, namely the number of endorsements and the prestige of the sources of the endorsements. There is a clear difference for publications too: for example, journals publishing only review articles may be very popular and cited often by any kind of source including low-impact publications, while highly specialized journals receive citations coming from a smaller but often highly qualified audience working at the cutting-edge of technology. IF, 5YIF, JFIS, and SNIP all consider the *crude number* of citations received by each paper as a measure of their value and are therefore *popularity measures*. *Prestige measures* include AF, IW, EF, AI and SJR, all of which weight citations *based on their source*. As such, they *explicitly consider the “quality” of the journal which is the source of each citation and thereby address a flaw in the IF (second part of point i) in Section II-A)*. IW, EF, AI and

TABLE 4. Features of several bibliometric indexes.

Property/Feature	Bibliometric Index										
	Popularity Measures					Prestige Measures					
	IF	5YIF	JFIS	SNIP	AF	IW	EF	AI	SJR		
Citation Window	2 years	5 years	1-5 years	3 years	5 years	5 years ^a	5 years	5 years	3 years		
Publication Window	1 year	1 year	1-5 years	1 year	1 year	1 year	1 year	1 year	1 year		
Self-Citations	Yes	Yes	Yes	Yes	Yes	Yes	No	No	Yes (max 33%)		
Subject/Field Normalization	No	No	Explicit (wrt average citations received by a prescribed subject field)	Explicit (wrt citations from set of citing journals)	Explicit (wrt average citations from any set of journals)	Implicit	Implicit	Implicit	Implicit		
Cited/Citing-side Normalization	N/A	N/A	Cited	Citing	Citing	Yes (based on influence redistribution)	Yes (based on prestige redistribution)	Yes (based on prestige redistribution)	Yes (based on prestige redistribution)		
Document Type Numerator	Articles, letters notes, reviews	Articles, letters notes, reviews	Articles, letters notes, reviews	Articles, reviews	Not mentioned explicitly	Not mentioned explicitly	Articles, letters notes, reviews	Articles, letters notes, reviews	Articles, reviews		
Document Type Denominator	Articles, reviews	Articles, reviews	Articles, letters notes, reviews	Articles, reviews	Not mentioned explicitly	Not mentioned explicitly	Articles, letters reviews	Articles, letters reviews	Articles reviews		
Weight of Citing Source	None	None	None	None	Yes	Yes	Yes	Yes	Yes		
Data Base ^c	JCR	JCR	(Wo5)	Scopus	(JCR)	(JCR)	JCR	JCR	Scopus		

^aIn the original paper [11] no time window was specified, while one of five years was selected for comparison purposes in further works such as [23]

^bFor articles, citations both from journal and conference papers are considered. The main difference here is the coverage of the underlying data base with respect to conference proceedings which is much wider in Scopus with respect to Web of Science or the Journal of Citation Reports

^cParentheses are reported to indicate that the data were taken from the mentioned data base to compute the indexes, but that the measure is not officially reported there

SJR achieve this result by using recursive citation weighting. For the latter three indicators, the set of scholarly papers is represented as a network, where each node corresponds to a journal and each link indicates citations from one journal to another [33]–[35]. Furthermore, the connections between nodes are oriented and weighted: large numbers of citations correspond to strong weights and the orientation of the connection indicates the direction of the citations. The use of this network representation allows the exploitation of well known and effective algorithmic tools to extract information from the structure of the data. Important examples of these tools are the eigenvector centrality [36], [37], used to quantify the popularity or the status of an individual in a social or communication network; and the Page Rank (PR) [38], used by Google to rank the importance of websites by considering the hyperlink structure of the world wide web. Eigenvector centrality is indeed the concept grounding the EF, AI and SJR metrics as well [33]–[30], [35] and, as such, the importance of a journal depends on where it is located in this structured network of citation links, that is, a journal is central in the mesh of citations if it is largely referenced, especially from other well connected journals. The IW is also a prestige measure and, as reported in the Appendix (see Subsections E and F, particularly at the end of the latter), can be interpreted as a special case of the AI; historically it was the first one proposed [11] and was one of the elements which led Brin and Page to develop the idea of the PR algorithm [38].

Interestingly, despite its definition it is not based on a recurrence equation (see Subsection C), the AF can also be interpreted as a special case of the AI (see also the end of Subsection F).

Desirable insensitivities. As shown in [23] both AF and IW possess two desirable properties, namely *insensitivity to insignificant journals* (i.e., the index is almost invariant if non-significant journals are not included in the data base) and *insensitivity to field differences* (i.e., the indicator for 2 different areas citing only minimally to other fields is on average the same). As reported in [23], these properties are to some extent **also “inherited” by the AI.**

Kind of measured performance. IW is a measure of a journal performance *per-reference* and not *per-article* as it is the case for the AI and the SJR, as well as the IF, 5YIF, JFIS and SNIP, while the EF measures the total performance of the journal and therefore, *ceteris paribus*, journals publishing more papers tend to have a larger EF.⁵

Normalization. To account for different citation practices among various subjects/fields, all new indexes **either rely on an implicit or explicit form of normalization, thereby**

⁵Note that the absence of a normalization by the size of the journal (which is implicit in every per-article measure) can be considered a desirable feature. In fact, one may argue that publishing only high impact papers is increasingly more difficult with an increasing journal size and also that large size journals provide potentially more benefits to the overall growth of the scientific community and of the impact of its produced results than very small ones publishing only 15-20 very high quality contributions per year.

addressing another of the IF’s flaws (first part of point i) in Section II-A). IW, EF, AI and SJR all provide implicit normalization. Explicit normalization on the *cited-side* is included in the JFIS, using the average number of citations received by all papers published in a given Subject Category. In the SNIP, explicit normalization on the *citing-side* is included, using the average number of citations contained in the set of papers present in the data base and citing papers published in publications in the same data base within the prescribed time window.

Similarly, the AF also possesses a *citing-side* normalization using the ratio between the average number of citations of the papers published in the journal of the same area and the same figure for the specific journal under consideration.

Included/excluded document types. JFIS, SNIP, and SJR eliminate inaccuracies caused by citations from non-peer-reviewed sources by considering the same list for both “*citable items*” considered in the numerator of each indicator and “*publication items*” considered at the denominator of each indicator. EF and AI reduce inaccuracies by reducing the influence of citable items which are not publication items. As such, **item iv)-a) in Section II-A is either completely addressed or at least notably reduced.**

Self-citations. As already stated in Section II-A, appropriate inclusion of self-citations in bibliometric indexes is a complex issue. JFIS, SNIP, AF, and IW include all self-citations and do not therefore offer any advantage over the IF. At the other extreme, EF and AI **ignore all self-citations, which obviously makes these indexes very difficult to manipulate.** Counting self-citations is, however, a subtle issue, since, as already mentioned, there may good reasons to include them. To try to address this issue, SJR takes a more balanced approach towards self-citations by allowing each journal to receive a maximum percentage of self-cites equal to 33%, which of course limits room for possible index inflation without penalizing normal self-citation behavior. In any case EF, AI and (with some pros and cons) SJR **successfully address issue iv)-b) in Section II-A.**

As a final remark and despite not being reported in Table 4, use of an *h*-type index would well complement the information extracted by other bibliometric indexes, as suggested in [56]. The *h*-index of a journal should not be computed from the journal’s creation date, but rather with respect to a definite time window, e.g. one or more years. Such a computation window will prevent strong biases against (relatively) old journals and, as such, a journal-level *h*-index is different from from what was originally proposed by Hirsh for individual scientist evaluation [43]. Such an indicator with a 5-year time window (h_5) has recently been adopted by Google Scholar [44] for the purpose of establishing a freely available ranking of scholarly publications⁶ and may therefore become an important reference in the future.

⁶This includes not only journals and conference proceedings but also archival repositories such as arXiv.org.

IV. QUANTITY AND KIND OF INFORMATION OBTAINABLE BY VARIOUS BIBLIOMETRIC INDICATORS: FACTOR ANALYSIS AND LINEAR REGRESSION

Each of the proposed bibliometric indexes discussed above offers one or more advantages over the IF. Yet, each index captures its own data of interest while sometimes ignoring or deemphasizing other data and/or has its own disadvantages. In this section, we analyze the information that one can extract from various bibliometric indicators introduced in Section III. To do so, we illustrate some comparisons and criticisms of the three most commonly used indexes, namely EF, AI, and SJR, to which the h -index and the SNIP are added as additional references; we then review the main results of two studies which analyzed several measures including EF, AI, SJR and h (but not the SNIP which was introduced in 2010) via a *Principal Component Analysis* (PCA) [46] and we conclude by showing how the use of a simple multiple linear regression model may successfully highlight anomalies in the trend of one specific indicator (the IF in particular).

As mentioned in Section III and very clearly highlighted in [40], EF and AI have the advantages that:

- they measure prestige by *weighting citations depending on the source* so those which come from highly prestigious journals such as *Science*, *Nature*, *Physical Review Letters*, *Proceedings of the IEEE*, ... are considered more important than those coming from the “Journal of Obscurity;”
- they use a *citation window of five years* which contributes to a reduction of year-to-year fluctuations and which better captures most papers’ citation impact for the vast majority of disciplines;
- they offer an *implicit normalization* by accounting for the *citation intensity* of a journal. In other words, since the number of citations given by journal j to journal i in Equation (12) of Subsection F in the Appendix is normalized by the total number of citations of all papers published by journal j , citations from journals with short list of references are implicitly considered more important than citations from journals with very long bibliographies (such as those publishing review papers only). This is also provides some normalization with respect to different areas with different citation practices.

EF and AI, however, both ignore all self-citations, an approach with both pros and cons. As already mentioned, ignoring them obviously makes these indexes very difficult to manipulate; however, it also fully discounts legitimate self-citations, especially in small scientific communities where one journal could be the undisputed reference.

The SJR *possesses similar features* as EF and AI with a (marginal) difference of using a citation window of three years instead of five and a (more important) difference of including self-citations up to a maximum of 33% of the total, which offers the advantage of including legitimate self-cites, but leaves some room for potential manipulation.

The SNIP *offers trade-offs between adaptivity to citation practices across fields and to what it measures*. It includes a subject-based normalization by considering the characteristics of a properly defined subject field [29], but *measures popularity rather than prestige*.

The most important positive features of the h -index include [56] the *insensitivity to an “accidental excess” in the number of non-cited papers and in the number of citations for one or few very highly cited contributions*, as well as the *capability to combine both the effect of the number of papers published and the citation rate*, thus reducing the apparent overperformance of small journals as measured by IF. The most important criticism is related to its lack of consistency as defined in [45].⁷

These simple examples illustrate clearly, as was first stated in [48], that **“one single impact measure might not be sufficient to describe citation characteristics of journals.”** Such a statement is even further strengthened by the analysis performed independently by [39] and [41], both of which performed a PCA [46] of the matrix containing the correlations between the rankings produced by, respectively, 39 and 13 existing and proposed different bibliometric measures. The 39 measures in [39] include, in addition to EF, AI, h -index and SJR, several other citation based metrics (Total Number of Cites, Immediacy Index, ...) taken from the 2007 JCR and the Scimago web site [53] and others which are based on usage log data resulting from the MESUR project [54]. The 13 measures in [41] are based on the analysis of citations acquired from the 2006 and 2007 JCRs and downloaded from the Scimago web site also for 2006 and 2007.⁸

Figure 2 provides a qualitative illustration of the main results reported in [39] and [41]. Their conclusions include that:

- 1) the scientific impact is (at least) a two-dimensional variable that **cannot be fully captured by any single indicator**. In fact, the cumulative variance of (i.e. the “amount of information” captured by) the PCA analysis [46] is sufficiently large ($> 70\%$) when (at least) 2 components are taken, since it amounts to is 83.4% for the analysis in [39] and 74.6% for the one in [41];
- 2) **different clusters of measures exist, distinguishing**, in particular, **between popularity and prestige measures**. In particular, in Figure 2 black ovals represent regions occupied by citation based metrics, where popularity and prestige indicators are clearly separated, while the green oval contains the region where usage

⁷Adapting the example in [45], assume that journal JA has a better performance index than JB which is based on the citations given to the papers they both publish. Suppose next that both journals obtain one additional paper each, both with the same number of citations. It would be natural to assume that JA still has better performance than JB. If this happens the performance index is said to be *consistent*. Interestingly, the h -index is not consistent. Suppose that JA has four papers with 4 citations each and JB has three papers with five citations each, then $h_5(\text{JA}) = 4$ and $h_5(\text{JB}) = 3$. If both journals receive another paper with five citations, then the relative performance changes since $h_5(\text{JA}) = h_5(\text{JB}) = 4$ (and if an additional paper with five citations arrives for both journals, then JB even outperforms JA).

⁸see [41] pp. 1329 for a thorough description of the data consistency.

TABLE 5. Ranking with respect to the IF (RK-IF), the AI (RK-AI), and the EF (RK-EF) for: (a) the IJNSNS (SC: Mathematics, Applied), (b) the IJHE (SC: Energy & Fuels), (c) the LPB (SC: Physics, Applied), and (d) the CO (SC: Behavioral Science). The total number of titles for the years 2007–2011 is (165, 175, 204, 236, 245) for Mathematics, Applied, (64, 67, 71, 79, 81) for Energy & Fuels, (94, 95, 108, 118, 125) for Physics, Applied and (45, 47, 49, 48, 48) for Behavioral Science. SUP indicated a title suppressed from the JCR that year.

	2007	2008	2009	2010	2011
RK-IF	1	1	1	4	24
RK-AI	38	8	34	81	63
RK-EF	36	25	43	53	51

(a)

	2007	2008	2009	2010	2011
RK-IF	6	8	SUP	17	49
RK-AI	32	54	SUP	45	57
RK-EF	50	67	SUP	70	79

(c)

	2007	2008	2009	2010	2011
RK-IF	6	5	7	12	12
RK-AI	9	17	21	38	30
RK-EF	6	5	3	3	3

(b)

	2007	2008	2009	2010	2011
RK-IF	8	19	7	4	4
RK-AI	9	15	12	15	10
RK-EF	15	21	17	16	14

(d)

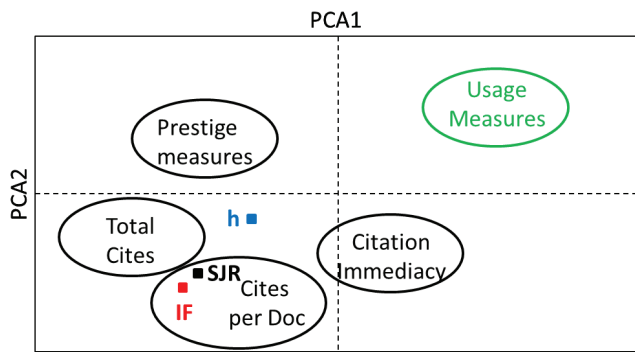


FIGURE 2. Qualitative sketch illustrating the correlations between 37 [39] and 13 [41] rankings with respect to different bibliometric measures mapped onto first two principal components of PCA. The cumulative variance of the first two factors (i.e., the “amount of information” captured by considering the first two components only of the PCA indicated as PCA1 and PCA2) is 83.4% for the analysis in [39] and 74.6% for the one in [41]. Data were taken from the 2007 edition of the JCR and the Scimago web site as well for the MESUR project (<http://mesur.lanl.gov/MESUR.html>) for [39] and from the 2007 and 2006 editions of the JCR and from the Scimago web site for [41]. Cluster of metrics are clearly identifiable: black ovals represent regions occupied by citation based metrics, (including those based on popularity and prestige), while the green oval contains the region where usage based metrics are positioned. Note that the IF is not located at the core of the construct but at its periphery, highlighting that it is able to capture only part of the meaningful information.

based metrics are positioned. Interestingly, despite being a prestige measure, the SJR is positioned in both analysis very close to the IF. On the contrary, the *h*-index is somewhat better positioned and is equidistant between prestige and popularity measures. Furthermore, [39] observed that the IF “is not positioned at the core of this construct, but at its periphery, and should thus be used with caution,” and certainly not considered as the “the only measure of choice”. Conversely, prestige indicators as the EF and the AI should be used to complement the information on the impact of the journal.

A simple example of the kind of information one can obtain by using more than one measure is shown in Table 5(a)–(d),

TABLE 6. Value of the multiple linear regression model coefficients (α_{EF} , α_{AI} , e) for the *M* journals reported in the JCR in years from 2007 to 2011 for which the value of the IF, EF, and AI was computed. The last 2 rows show the mean value $E\left[\frac{IF_i - IF_i^{Pr}}{IF_i^{Pr}}\right]$ and the standard deviation σ of the relative difference between the real value IF_i of the IF and the corresponding value IF_i^{Pr} predicted using the multiple linear regression model.

	2007	2008	2009	2010	2011
α_{EF}	2.591	2.610	2.553	2.255	2.438
α_{AI}	1.812	1.867	1.901	1.978	1.952
e	0.393	0.499	0.511	0.4937	0.504
<i>M</i>	5862	6023	6286	6649	6893
$E\left[\frac{IF_i - IF_i^{Pr}}{IF_i^{Pr}}\right]$	-0.072	-0.073	-0.067	-0.065	-0.058
σ	0.425	0.411	0.423	0.403	0.402

which reports the ranking with respect to the IF, AI and EF (denoted as RK-IF, RK-AI and RK-EF respectively and for four of the journals considered in Section II, i.e., (a) the IJNSNS (SC: Mathematics, Applied), (b) the IJHE (SC: Energy & Fuels), (c) the LPB (SC: Physics, Applied), and (d) the CO (SC: Behavioral Science). As can be seen by comparing the data of Table 5(a) and those reported in Table 3 and in Subsection II-B, the large differences in RK-IF for the IJNSNS with respect to those of both RK-AI and RK-EF highlight the anomaly in citation patterns reported in [19]. Similarly, a very large discrepancy exists for LPB in 2007 and 2008 [see Table 5(c)], which could again be considered as a good indicator of the anomalies which led Thomson to suppress the title for the 2009 JCR. On the contrary, the more limited differences in RK-IF, RK-AI and RK-EF for IJHE and CO may lead one to conclude that the increasing trends in Figure 1(a) and (b) (including the large peak of R_i^{IF} in 2010 for CO) are not related to any particular anomaly.⁹

Instead of correlating the ranking with respect to various indicators, a similar conclusion can be reached in a more

⁹Note that the particularly low value for RK-EF for IJHE may also be due to the large and increasing number of papers published by it in recent years.

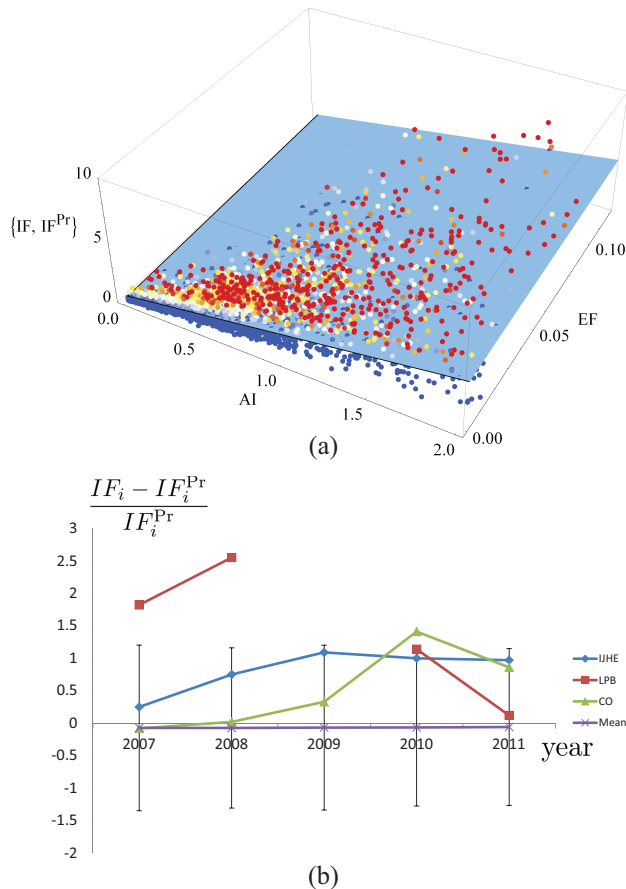


FIGURE 3. (a) Plot of the points (AI_i, EF_i, IF_i) for the 5862 journals contained in the 2007 edition of the JCR and for which all 3 indicators have been computed and of the corresponding best fitting plane $IF_i^{Pr} = \alpha_{EF}EF_i + \alpha_{AI}AI_i + e$ with the parameters reported in the 2007 column of Table 6. The color of the points is set in accordance to a typical temperature scale and only the part of the plot corresponding to the largest aggregation of the data point is reported; (b) plot of the relative difference $((IF_i - IF_i^{Pr})/IF_i^{Pr})$ for IJHE, LPB, and CO between 2007 and 2011 together with the corresponding mean $E[(IF_i - IF_i^{Pr})/IF_i^{Pr}]$ computed for the entire JCR, in which $\pm 3\sigma$ error bars are also shown.

quantitative way by performing a multiple linear regression [57] where the IF is the dependent variable and EF and AI are the explanatory variables. More precisely, let us consider the data set $\{IF_i, EF_i, AI_i\}_{i=1}^M$ of M statistical units, which are the journals in the JCR edition of a given year for which the IF, the AI and the EF have been computed. We then assume that the relationship between the dependent variable IF_i^{Pr} and (EF_i, AI_i) exists in the form

$$IF_i^{Pr} = \alpha_{EF}EF_i + \alpha_{AI}AI_i + e \tag{1}$$

where the coefficients $(\alpha_{EF}, \alpha_{AI}, e)$ are determined as those defining the best fitting plane for the M statistical units in the least square sense. The coefficients obtained by this procedure for the JCR editions from 2007 to 2011 are reported in Table 6, which shows also the corresponding value of M . As an example, Figure 3(a) reports a plot of the points (AI_i, EF_i, IF_i) for most of the 5862 journals contained in the 2007 edition of the JCR for which all 3 indicators exists, as

well as of the corresponding best fitting plane. The multiple linear regression model (1) can be used to determine, for each journal, the value IF_i^{Pr} , that is the IF that a generic journal i would have if its quality could be determined by the corresponding EF and AI alone. Given the fact that the latter indicators discard self-citations, a too large positive difference $IF_i - IF_i^{Pr}$ can be naturally considered as an indication that IF manipulation is taking place for the journal. Figure 3(b) reports the for IJHE, LPB, and CO the relative difference $(IF_i - IF_i^{Pr})/IF_i^{Pr}$ for year 2007 to 2011 together with the corresponding mean value $E[(IF_i - IF_i^{Pr})/IF_i^{Pr}]$ computed with respect to the whole JCR and whose value is reported, together with the corresponding standard deviation σ in the last two rows of Table 6. The data illustrate that, while for CO and IJHE the value of $(IF_i - IF_i^{Pr})/IF_i^{Pr}$ always fall in an interval of amplitude 3σ centered on the JCR mean value (represented by the gray error bars in the plot of Figure 3(b)) or are very close to it, LPB in 2007 and 2008 lie far outside from it, which offers further ground to Thomson decision of excluding the journal from the JCR in 2009.

V. CONCLUSION

The scientific impact of journals as evaluated by bibliometrics is a complicated, multi-dimensional construct **which cannot be captured by any single measure**. Furthermore, the well-known and widely employed IF is not at the center of the “metrics space” and therefore can be considered to express **only a rather particular aspect of the scientific impact**, which in no way supports its current status of “gold standard.” Many other bibliometric indicators exist whose features address the IF’s flaws. In particular *prestige indicators*, such as the EF and the AI, should be selected as a complement of *popularity measures*, the IF in particular, to better characterize the quality of each journal.

There is an additional and very important advantage in promoting the use of more than one bibliometric index. One cannot stress enough that being an average measure of a particularly skewed distribution of the number of citations received by each manuscript, **any journal-based metric is simply not designed to capture qualities of individual papers** [49]. A similar statement holds also when one needs to evaluate **the publications of individual scholars** or, in general, any small collection of papers. Thomson-Reuters itself stresses that [50] that “The impact factor should be used with informed peer review. In the case of academic evaluation for tenure it is sometimes inappropriate to use the impact of the source journal to estimate the expected frequency of a recently published article,” and similar considerations apply also for any other measure one may consider to evaluate journal quality. Despite this, **more and more often IF is misused as a central element in the assessment of the performance of scientists, for hiring, tenure and promotions, and as a fundamental factor in evaluating and scoring research proposals**, a practice which is as much to be deplored as it is unfortunately spread. This fact, in addition to the misplaced emphasis on the IF which has become the *de-facto* single

measure for journal evaluation, can be considered to be the *core reason for the increase in the number of reported attempts of manipulate it*. In similar cases, the well known Goodhart's law in Economics [19], [55] warns us that *when a measure becomes a target, it ceases to be a good measure*.

It is therefore time for the scientific community to take a stand against such behavior, by spreading this knowledge, encouraging the use of multiple bibliometric indicators, and by taking a position on the proper use of bibliometrics to evaluate journals' quality in the scholarly literature. At the same time, the community should condemn any attempt to manipulate bibliometric indicators and also their improper use for the evaluation of single scientists, whose work can only be correctly measured by the opinions of competent peers after a careful reading.

APPENDIX

For completeness, this appendix reports the definitions of all the bibliometric indicators discussed in this paper. Here, we use the standard notation used in the bibliometric literature for variables. For the first time to the best of the author's knowledge, the notation is consistently maintained for all indicators, which make it easier to compare their features. Let us assume that the data base contains N papers and let Δ_α and Δ_β indicate 2 different set of years, where the element of the first set precede the element of the second one. Let us indicate with $c_{ij}^{\Delta_\beta \Delta_\alpha}$ the number of citations given to papers published in journal j in period Δ_α from papers published in journal i in period Δ_β , and with $p_i^{\Delta_\beta}$ ($p_j^{\Delta_\alpha}$) the number of papers published by journal i (j) in period Δ_β (Δ_α), so that $C_{i \rightarrow}^{\Delta_\beta \Delta_\alpha} = \sum_{j=1}^N c_{ij}^{\Delta_\beta \Delta_\alpha}$ indicates the total number of citations originating from journal i ($i \rightarrow$) in period Δ_β to all journals indexed in the data base and published in period Δ_α and $C_{\rightarrow j}^{\Delta_\beta \Delta_\alpha} = \sum_{i=1}^N c_{ij}^{\Delta_\beta \Delta_\alpha}$ indicates the total number of citations received by all papers published in journal j ($\rightarrow j$) in period Δ_α originating from all journals in the data base in period Δ_β .

A. IMPACT FACTOR AND FIVE-YEAR IMPACT FACTOR

For a given year Y_n , let $\Delta_1 = \{Y_{n-2}, Y_{n-1}\}$ and $\Delta_2 = \{Y_n\}$ so that the Impact Factor of journal i is defined as

$$IF_i = \frac{C_{\rightarrow i}^{\Delta_2 \Delta_1}}{p_i^{\Delta_1}} \quad (2)$$

For the Five Year Impact Factor 5YIF_{*i*} the above definition is formally the same, with an identical choice for Δ_2 and with $\Delta_1 = \{Y_{n-5}, Y_{n-4}, \dots, Y_{n-1}\}$. With this, IF_{*i*} and 5YIF_{*i*} assume the significance of the average number of citations given to each paper published in journal i in the previous two years $\{Y_{n-2}, Y_{n-1}\}$ or five years $\{Y_{n-5}, Y_{n-4}, \dots, Y_{n-1}\}$, respectively.

B. JOURNAL TO FIELD IMPACT SCORE

For a given set of years (usually 4, but also 5 or more have been used [32]) $\Delta_1 = \{Y_{n-3}, Y_{n-2}, Y_{n-1}, Y_n\}$, let

$\Delta_2 = \{Y_{n-2}, Y_{n-1}, Y_n\}$ and $\Delta_3 = \{Y_{n-1}, Y_n\}$ and $\Delta_4 = \{Y_n\}$, with $c(\xi)_{ij}^{\Delta_\beta \Delta_\alpha}$ for $\xi = A, R, L$, and N the number of citations given by all papers published in journal i in period Δ_β to the different document types (articles, review, letters and notes) published in journal j in period Δ_α whose total number is $\xi_j^{\Delta_\alpha}$ respectively, and with $C(\xi)_{\rightarrow j}^{\Delta_\beta \Delta_\alpha} = \sum_{i=1}^N c_{ij}^{\Delta_\beta \Delta_\alpha}$ the corresponding total number of citations received by publication items ξ in journal j in period Δ_α originating from all journals in the data base in period Δ_β . The Journal to Field Impact Score for journal i is defined as

$$JFIS_i = \frac{\sum_{k=1}^4 \sum_{\xi \in \{A,R,L,N\}} \frac{C(\xi)_{\rightarrow i}^{\Delta_k \Delta_k}}{\xi_i^{\Delta_k}}}{\sum_{j \in SC} \sum_{k=1}^4 \sum_{\xi \in \{A,R,L,N\}} \frac{C(\xi)_{\rightarrow j}^{\Delta_k \Delta_k}}{\xi_j^{\Delta_k}}} \quad (3)$$

where the denominator is the average number of citations received by all journals in the same area (i.e. Subject Category (SC) in WoS) as journal i .

C. AUDIENCE FACTOR

The definition of the Audience Factor [31] is similar to that of the IF except that citations are weighted based on the journal from which they originate. More specifically, define \mathcal{J} to be a specific set of journals (not necessarily a SC), and then for a given year Y_n and with $\Delta_1 = \{Y_{n-5}, Y_{n-4}, \dots, Y_{n-1}\}$ and $\Delta_2 = \{Y_n\}$, for journal i we have

$$AF_i = \frac{1}{p_i^{\Delta_2}} \sum_{j=1}^N \frac{\sum_{k \in \mathcal{J}} C_{k \rightarrow}^{\Delta_2 \Delta_1}}{\frac{\sum_{j \rightarrow} C_{j \rightarrow}^{\Delta_2 \Delta_1}}{p_j^{\Delta_2}}} c_{ji}^{\Delta_2 \Delta_1} \quad (4)$$

Note that the AF performs a normalization with respect to the citing-side, while the JFIS definition is based on a normalization with respect to the cited-side of the expression.

D. SOURCE NORMALIZED IMPACT PER PAPER

For a given year Y_n , let $\Delta_1 = \{Y_{n-3}, Y_{n-2}, Y_{n-1}\}$ and $\Delta_2 = \{Y_n\}$. The Source Normalized Impact per Paper (SNIP) [29] of journal i is defined as the ratio

$$SNIP_i = \frac{RIP_i}{RDCP_i} \quad (5)$$

where RIP_i is the Raw Impact per Paper of journal i , i.e. the average number of citations per paper published in journal i in period Δ_1 by papers published in all journals present in the data base in period Δ_2

$$RIP_i = \frac{C_{\rightarrow i}^{\Delta_2 \Delta_1}}{p_i^{\Delta_1}} \quad (6)$$

so that, by comparing (6) and (2) one immediately sees that the only difference between RIP_i and IF_i is the length of the citation window Δ_1 . The $RDCP_i$ is the Relative Database

Citation Potential of journal i , which is the average number of citations contained in any paper citing journal i in period Δ_1 normalized in such a way that the median journal in the database has $RDCP_i = 1$

$$RDCP_i = \theta \frac{\sum_{j \in \mathcal{I}} C_{j \rightarrow i}^{\Delta_2 \Delta_1}}{p_{j \rightarrow i}^{\Delta_2 \Delta_1}} \quad (7)$$

where \mathcal{I} is the set of journals published in the data base in period Δ_2 which cite papers published in journal i in period Δ_1 , $p_{j \rightarrow i}^{\Delta_2 \Delta_1}$ is the number of papers published in the journal j of this set in the period Δ_2 citing papers published in journal i of the set in period Δ_1 , and θ is a normalizing constant chosen to have $RDCP_i = 1$ for the median journal in the data base.¹⁰

E. INFLUENCE WEIGHT

For a given year Y_n , let $\Delta_1 = \{Y_{n-5}, Y_{n-4}, \dots, Y_{n-1}\}$ and $\Delta_2 = \{Y_n\}$. The Influence Weight [11] for journal i is computed as

$$IW_i = \lim_{k \rightarrow \infty} IW_i[k] \quad (8)$$

where at each recursion step, $IW_i[k]$ is the solution of the following system of linear equations

$$IW_i[k] = \sum_{j=1}^N \frac{c_{ji}^{\Delta_2 \Delta_1}}{C_{i \rightarrow}^{\Delta_2 \Delta_1}} IW_i[k-1] \\ \frac{\sum_{i=1}^N IW_i[k] C_{i \rightarrow}^{\Delta_2 \Delta_1}}{\sum_{i=1}^N C_{i \rightarrow}^{\Delta_2 \Delta_1}} = 1 \quad (9)$$

The normalization term in the denominator makes the IW measure journal average performance *per-reference* and not *per-paper*. To get an indication of the latter, one needs therefore to compute

$$IPP_i = \frac{IW_i C_{i \rightarrow}^{\Delta_2 \Delta_1}}{p_i^{\Delta_1}} \quad (10)$$

F. EIGENFACTOR AND ARTICLE INFLUENCE

For a given year Y_n , let $\Delta_1 = \{Y_{n-5}, Y_{n-4}, \dots, Y_{n-1}\}$ and $\Delta_2 = \{Y_n\}$. As stated in Section I, the computation of the EF takes advantage of the entire journal network and is based on a recursive equation similar to the PR algorithm. More precisely [34], for each journal $i = 1, \dots, M$ let one needs to compute the value

$$\pi_i = \lim_{k \rightarrow \infty} \pi_i[k] \quad (11)$$

where at each recursion step, $\pi_i[k]$ is the solution of the following system of linear equations

¹⁰i.e. θ is the inverse of the median of the quantity $\sum_{j \in \mathcal{I}} C_{j \rightarrow i}^{\Delta_2 \Delta_1} / p_{j \rightarrow i}^{\Delta_2 \Delta_1}$.

$$\pi_i[k] = (1 - \alpha) \frac{p_i^{\Delta_2}}{\sum_{k=1}^M p_k^{\Delta_2}} \\ + \alpha \left(\sum_{\substack{j=1, j \neq i \\ j \notin \mathcal{D}}}^M \frac{c_{ji}^{\Delta_2 \Delta_1}}{\sum_{l=1, l \neq j}^M c_{jl}^{\Delta_2 \Delta_1}} \pi_j[k-1] \right. \\ \left. + \frac{p_i^{\Delta_1}}{\sum_{l=1}^M p_l^{\Delta_1}} \sum_{j \in \mathcal{D}} \pi_j[k-1] \right) \\ \sum_{i=1}^M \pi_i[k] = 1 \quad (12)$$

where:

- the parameter α must be less than 1 to ensure convergence of (12) (usually $\alpha = 0.85$ [33])¹¹;
- \mathcal{D} is the set of *dangling nodes* in the journal network, i.e. the journals that are only cited, but do not cite any other journal in time window Δ_1 . To avoid losing their prestige ($\sum_{j \in \mathcal{D}} \pi_j[k-1]$), this is redistributed weighted with respect to the “journal relative prestige due to size,” i.e., the ratio between the number of papers published by the journal in period Δ_1 with respect to the total for journals in the data base $p_i^{\Delta_1} / \sum_{l=1}^M p_l^{\Delta_1}$.

Once system (12) is solved, the EF for journal i can be defined as

$$EF_i = 100 \sum_{j=1}^M \frac{\pi_j}{C_{j \rightarrow}^{\Delta_2 \Delta_1}} c_{ji}^{\Delta_2 \Delta_1} \quad (13)$$

Note that EF_i depends through (12) on the citations journal i receives from all other journals, weighted both by the journal citation potential (i.e the total number of citations given by that specific journal to any other) and by the journal prestige coefficient (i.e., its own coefficient π_j). Note also that (because $j \neq i$, i.e., $c_{ii}^{\Delta_2 \Delta_1} = 0$) self-citations are not considered. If we assume $\alpha = 1$, another useful way to interpret the above recursion is to notice that π_i are the elements of the eigenvector of unity eigenvalue of a Markov chain whose nodes are the journals in the collection and whose transition matrix is proportional to the fraction of citations linking each journal j to journal i . This corresponds to considering the scores as the result of the following random process [34]:

“Imagine that a researcher is to spend all eternity in the library randomly following citations within scientific periodicals. The researcher begins by picking a random journal in the library. From this volume a random citation is selected. The researcher then walks over to the journal referenced by this citation. The probability of doing so corresponds to

¹¹It can be proven that if $\alpha < 1$ this system of linear equations always has a unique solution. For $\alpha = 1$, the system of linear equations has a unique solution if the journal citation matrix $[c_{ij}^{\Delta_2 \Delta_1}]$ is irreducible [23].

the fraction of citations linking the referenced journal to the referring one, conditioned on the fact that the researcher starts from the referring journal. From this new volume the researcher now selects another random citation and proceeds to that journal. This process is repeated ad infinitum.”

Of course, the above scientist will read journals that receives a large number of citations and will reach them coming from journals that are also highly cited. The percentage of the time that the model researcher visits that journal in the walk through the library is given by the elements of the eigenvector of unity eigenvalue of the transition matrix of the Markov chain modeling the process. Each element of this eigenvector gives a quantity which is proportionally related to the EF score of the corresponding journal. So when we report that *IEEE Transactions on Information Theory* in 2010 had an EF score of 0.06987, the physical significance of this is that almost 0.07% of the time, the model researcher would have visited that periodical. It is also worthwhile to stress that:

- the Eigenfactor score is a per-journal measure and therefore tends to increase with the number of papers published, since having more articles one can expect them to be visited more often. On the other hand, it may be useful for librarians to determine the expected impact of the journal in their readership;
- because by its very definition the sum of the Eigenfactor in the entire collection of publication is equal to 100%, Eigenfactors are additive, that is, the percentage of time a researcher spends at a given group of journals is the sum of their EFs.¹²

The AI is computed starting from the EF and normalizing its value with respect to the total number of papers $p_i^{\Delta_2}$ published by the corresponding journal, i.e.

$$AI_i = \beta \frac{EF_i}{p_i^{\Delta_2}} \quad (14)$$

where β is a normalization constant chosen so that $AI = 1$ for the journal corresponding to the median of the distribution of the Article Influence values in the set of journals under consideration. The Article Influence score therefore measures the influence, per-article, of a given journal and as such is directly comparable to IF; a value above 1 indicates an above average performance for that journal.

Finally, as reported in [23]:

- for $\alpha = 0$ one immediately find comparing the very definition (12)–(14) and (4) that $AI_i \propto AF_i$ assuming that the number of papers $p_i^{\Delta_1}$ published by journal i in period Δ_1 is proportional to the number of papers $p_i^{\Delta_2}$ published by the same journal in period Δ_2 ;
- for $\alpha = 1$ one gets again by their very definitions (12)–(14) and (8)–(10) that $AI_i \propto IPP_i$.

¹²This property can be very useful for librarians to compare the value of specific journal bundles.

G. SCIMAGO JOURNAL RANK

The SJR [30] belongs, as the EF and the AI, to the family of bibliometric indexes related to the PR algorithm. Let us consider a specific year Y_n , let $\Delta_1 = \{Y_{n-3}, Y_{n-2}, Y_{n-1}\}$ and $\Delta_2 = \{Y_n\}$. As in the previous case the computation of the SJR involves to determine for each journal $i = 1, \dots, M$ the value

$$\sigma_i = \lim_{k \rightarrow \infty} \sigma_i[k] \quad (15)$$

where at each recursion step, $\sigma_i[k]$ is the solution of the following system of linear equations

$$\begin{aligned} \sigma_i[k] = & \frac{(1 - \gamma - \delta)}{M} + \delta \frac{p_i^{\Delta_1}}{\sum_{k=1}^M p_k^{\Delta_1}} \\ & + \gamma \left(\frac{p_i^{\Delta_1}}{\sum_{k=1}^M p_k^{\Delta_1}} \sum_{j \in \mathcal{D}} \sigma_j[k-1] \right. \\ & \left. + \Lambda[k-1] \sum_{j=1, j \neq i}^M \frac{c_{ji}^{\Delta_2 \Delta_1}}{C_{j \rightarrow}^{\Delta_2 \Delta_1}} \sigma_j[k-1] \right) \\ \sum_{i=1}^M \sigma_i[k] = & 1 \end{aligned} \quad (16)$$

where δ and γ are two constant set to weight, respectively, the amount of influence of the number of articles published and the number of citations received to determine the level of prestige (typically $\delta = 0.9$, and $\gamma = 0.0999$), while \mathcal{D} is the set of dangling nodes in window Δ_1 . It is worth mentioning the significance of each term in (16). The first two elements of the RHS, making up 10% of a journal’s prestige value, are constant through the iterations and accounts, respectively, for the simple existence of the journal in the data base and for the fraction of articles it publishes in the entire network.

As far as the third element is concerned, the first addend represents the prestige transferred from each journal j citing journal i , which is weighted by the fraction of citations which journal j gives to journal i with respect to its total in the citation window Δ_1 . Note also that due to the fact that only citations in the period Δ_1 are considered in the process of transferring prestige, the quantity

$$\Lambda[k-1] = \frac{1 - \sum_{j \in \mathcal{D}} \sigma_j[k-1]}{\sum_{m=1}^M \sum_{n=1}^M \frac{c_{mn}^{\Delta_2 \Delta_1}}{C_{n \rightarrow}^{\Delta_2 \Delta_1}} \sigma_n[k-1]}$$

has been introduced to avoid losing prestige in the transferring process since not all citations of each paper are considered. To do so, one simply multiplies by the above coefficient Λ which is just the ratio between the total prestige (i.e. 1 apart from what is given to dangling nodes) and the one distributed through the citations falling in window Δ_1 . The second addend aims at redistributing the amount of prestige lost to dangling nodes and does so simply in a way which is proportional to the fractions of papers published in journal i with respect to the total in the data base.

Once system (16) has been solved, the SJR of journal i can be computed as

$$\text{SJR}_i = \frac{\sigma_i}{P_i^{\Delta_1}} \quad (17)$$

From the above equation one readily gets that SJR is a measure of quality *per-paper* and it is therefore comparable to the AI but not directly to the EF. From this point of view, it is also interesting to notice that, even when one sets $\gamma + \delta = \alpha$, the solution of (16) does not lead to EF_i due to the absence of the equivalent of (13) in the set of equations defining the SJR. This offers a possible explanation of what Bollen et al. found in their analysis [39], in which they have shown that the SJR's placement in the "space" of impact measures was closer to IF than to EF and other PR-based measures.

H. h-INDEX

Similarly to what is defined by Hirsh for scientists [43], a journal has h -index of h if h of the N papers it has published have h citations each and the other $N - h$ have fewer than h citations each. The use of this indicator to complement IF in journal evaluation was first suggested by [56] and, differently with respect to a scientist, to compensate for the journal age, N may also refer to the most recent (say in the last 5 or 10 years) papers published in a journal.

REFERENCES

- [1] B. R. Martin and J. Irvine, "Assessing basic research," *Res. Policy*, vol. 12, no. 2, pp. 61–90, 1983.
- [2] P. T. Shepherd, "The feasibility of developing and implementing journal usage factor: A research project sponsored by UKSG," *Serials*, vol. 20, no. 2, pp. 117–123, 2007.
- [3] (2012). *From Bibliometrics to Altmetrics, A Changing Scholarly Landscape* [Online]. Available: <http://altmetrics.org/manifesto/>
- [4] J. Priem, H. A. Piwowar, and B. M. Hemminger, "Altmetrics in the wild: Using social media to explore scholarly impact," in *Proc. ACM Web Sci. Conf. Workshop Evanston*, 2012, pp. 1–3.
- [5] *Journal of Scientific Report* [Online]. Available: http://thomsonreuters.com/products_services/science/science_products/az/journal_citation_reports/
- [6] *Scopus Database* [Online]. Available: <http://www.scopus.com>
- [7] E. Garfield, "Citation analysis as a tool in journal evaluation," *Science*, vol. 178, no. 4060, pp. 471–479, 1972.
- [8] E. Garfield, "The history and meaning of the journal impact factor," *J. Amer. Med. Assoc.*, vol. 295, no. 1, pp. 90–93, 2006.
- [9] J. F. Gehanno, S. J. Darmoni, and J. F. Caillard, "Major inaccuracies in articles citing occupational or environmental medicine papers and their implications," *J. Amer. Med. Assoc.*, vol. 93, no. 1, pp. 118–121, 2005.
- [10] P. Dong, M. Loh, and A. Mondry, "The impact factor revisited," *Biomed. Digital Libraries*, vol. 2, pp. 1–4, Dec. 2005.
- [11] G. Pinski and F. Narin, "Citation influence for journal aggregates of scientific publications," *Inf. Process. Manage.*, vol. 46, no. 1, pp. 575–589, 1976.
- [12] B. M. Althouse, J. D. West, T. Bergstrom, and C. T. Bergstrom, "Differences in impact factor across fields and over time," *J. Amer. Soc. Inf. Sci. Technol.*, vol. 60, no. 1, pp. 27–34, 2010.
- [13] C. Tomer, "A statistical assessment of two measures of citations: The impact factor and the immediacy index," *Inf. Process. Manage.*, vol. 22, no. 3, pp. 251–258, 1986.
- [14] E. Garfield, "The evolution of physical chemistry and chemical physics," *Current Contents*, vol. 3, pp. 3–12, Jan. 1986.
- [15] M. E. Falagas and V. G. Alexiou, "The top-ten in journal impact factor manipulation," *Archivum Immunol. Ettherapiae Experim.*, vol. 56, no. 4, pp. 223–226, 2008.
- [16] F. Anseel, W. Duyck, and W. De Baene, "Journal impact factor and self-citations: Implications for psychology journals," *Amer. Psychol.*, vol. 59, no. 1, pp. 49–51, 2004.
- [17] G. Yu, D. Hui Yang, and H.-Xin He "An automatic recognition method of journal impact factor manipulation," *J. Inf. Sci.* vol. 37, no. 3, pp. 235–245, 2011.
- [18] S. Begley, "Science journals artfully try to boost their rankings," *Wall Street J.*, vol. 3, pp. B1–B8, Jun. 2006.
- [19] D. N. Arnold and K. K. Fowler, "Nefarious numbers," *Notices AMS*, vol. 58, pp. 434–437, Mar. 2011.
- [20] A. W. Wilhite and E. A. Fong, "Coercive citations in academic publishing," *Science*, vol. 335, no. 6068, pp. 542–543, 2012.
- [21] R. Van Noorden, (2012). *Researchers Feel Pressure to Cite Superfluous Papers* [Online]. Available: <http://www.nature.com/news/researchers-feel-pressure-to-cite-superfluous-papers-1.9968>
- [22] [Online]. Available: <http://scholarlykitchen.sspnet.org>
- [23] L. Waltman and N. J. van Eck, "The relation between eigenfactor, audience factor and influence weight," *J. Amer. Soc. Inf. Sci. Technol.*, vol. 61, pp. 1476–1486, Mar. 2010.
- [24] J. Bollen, M. A. Rodriguez, and H. van de Sompel, "Journal status," *Scientometrics*, vol. 69, pp. 669–687, Jan. 2006.
- [25] M. Rossner, H. van Epps, and E. Hill, "Show me the data," *J. Cell Biol.*, vol. 179, pp. 1091–1092, Dec. 2007.
- [26] M. Rossner, H. van Epps, and E. Hill, "Irreproducible results: A response to Thomson scientific," *J. Cell Biol.* vol. 180, no. 2, pp. 254–255, 2008.
- [27] A. Jackson, "The impact factor game," *PLoS Med. Editors*, vol. 3, no. 6, pp. 289–291, Jun. 2006.
- [28] P. Campbell, "Escape from the impact factor," *Ethics Sci. Environ. Polit.*, vol. 8 pp. 5–7, Jan. 2008.
- [29] H. F. Moed, "Measuring contextual citation impact of scientific journals," *J. Inf.*, vol. 4, no. 3, pp. 265–277, 2010.
- [30] B. Gonzalez-Pereira, V. P. Guerrero-Bote, and F. Moya-Anegon, "A new approach to the metric of journals scientific prestige: The SJR indicator," *J. Inf.* vol. 4, pp. 379–391, Apr. 2010.
- [31] M. Zitt and H. Small, "Modifying the journal impact factor by fractional citation weighting: The audience factor," *J. Amer. Soc. Inf. Sci. Technol.*, vol. 59, pp. 1856–1860, Sep. 2008.
- [32] T. N. van Leeuwen and H. F. Moed, "Development and application of journal impact measures in the Dutch science system," *Scientometrics*, vol. 53, no. 2, pp. 249–266, 2002.
- [33] J. D. West, "Eigenfactor: Ranking and mapping scientific knowledge," Ph.D. dissertation, Dept. Biol., Univ. Washington, Seattle, WA, USA, 2010.
- [34] J. D. West, T. C. Bergstrom, and C. T. Bergstrom, "The eigenfactor metrics: A network approach to assessing scholarly journals," *College Res. Libraries*, vol. 71, pp. 236–244, May 2010.
- [35] C. T. Bergstrom, "Eigenfactor: Measuring the value and prestige of scholarly journals," *Scholarly Commun.*, vol. 68, no. 5, pp. 1–3, 2007.
- [36] D. J. de Solla Price, "Networks of scientific papers," *Science* vol. 149, pp. 510–515, Jul. 1965.
- [37] P. Bonacich "Factoring and weighting approaches to clique identification," *J. Math. Sociol.*, vol. 2, no. 1, pp. 113–120, 1972.
- [38] L. Page, S. Brin, R. Motwani, and T. Winograd, "The pagerank citation ranking: Bringing order to the web," Stanford Digital Library Technol. Project, Stanford Univ., Stanford, CA, USA, Tech. Rep. 2570, 1998.
- [39] J. Bollen, H. van de Sompel, A. Hagberg, and R. Chute, "A principal component analysis of 39 scientific impact measures," *PLoS One*, vol. 4, no. 6, p. e6022, 2009.
- [40] M. Franceschet, "Ten good reasons to use the Eigenfactor metrics," *Inf. Process. Manage.*, vol. 46, pp. 555–558, Sep. 2010.
- [41] L. Leydesdorff, "How are new citation-based journal indicators adding to the bibliometric toolbox," *J. Amer. Soc. Inf. Sci. Technol.*, vol. 60, pp. 1327–1336, Apr. 2008.
- [42] T. Braun, W. Glaenzel, and A. Schubert, "A Hirsch-type index for journals," *Scientometrics*, vol. 69, no. 1, pp. 169–173, 2006.
- [43] J. E. Hirsh, "An index to quantify an individual scientific output," in *Proc. Nat. Academy Sci. United States Amer.*, vol. 102, 2005, pp. 16569–16572.
- [44] [Online]. Available: <http://scholar.google.com/intl/en/scholar/metrics.html>

[45] L. Waltman and N. J. van Eck, "A Taxonomy of bibliometric performance indicators based on the property of consistency," Joint Res. Inst. Rotterdam School Manage., Erasmus Univ. Rotterdam, USA, Rep. No ERS-2009-014-LIS, 2009.

[46] I. T. Jolliffe, *Principal Component Analysis*, New York, NY, USA: Springer-Verlag, 2002.

[47] R. A. Johnson and D. W. Wichern, *Applied Multivariate Statistical Analysis*, Upper Saddle River, NJ, USA: Prentice Hall, 2007.

[48] W. Glaenzel and H. F. Moed, "Journal impact measures in bibliometric research," *Scientometrics*, vol. 53, no. 2, pp. 171–193, 2002.

[49] C. Neylon and S. Wu, "Article-level metrics and the evolution of scientific impact," *PLOS Biol.*, vol. 7, no. 11, p. e1000242, 2009.

[50] *The Thomson Reuter Impact Factor* [Online]. Available: http://thomsonreuters.com/products_services/science/free/essays/impact_factor

[51] (2011). *Journal of Citation Reports Notices* [Online]. Available: http://admin-apps.webofknowledge.com/JCR/static_html/notices/notices.htm

[52] (2010). *Journal of Citation Reports Notices* [Online]. Available: http://admin-apps.webofknowledge.com/JCR/static_html/notices/20110603notices.htm

[53] *Scimago Web Site* [Online]. Available: <http://www.scimagojr.com>

[54] *MESUR: Metrics from Scholarly Usage of Resources* [Online]. Available: <http://mesur.lanl.gov/MESUR.html>

[55] C. Goodhart, "Problems of monetary management: The U.K. experience," in *Inflation, Depression, and Economic Policy in the West*, A. S. Courakis (ed.), Lanham, MD, USA: Rowman & Littlefield, 1981, pp. 111–146.

[56] T. Braun, W. Glaenzel, and A. Schubert, "A Hirsch-type index for journals," *Scientometrics*, vol. 69, no. 1, pp. 169–173, 2006.

[57] R. A. Johnson and D. W. Wichern, "Applied multivariate statistical analysis," *Pearson*, 6th ed., 2007.

He served as an Associate Editor for the IEEE TRANSACTIONS ON CIRCUITS AND SYSTEMS - PART I from 1999 to 2002 and from 2002 to 2004) and the IEEE TRANSACTIONS ON CIRCUITS AND SYSTEMS - PART II from 2004 to 2007, the Deputy-Editor-in-Chief for the IEEE *Circuits and Systems Magazine* from 2004 to 2007 and as the Editor-in-Chief for the IEEE TRANSACTIONS ON CIRCUITS AND SYSTEMS - PART II from 2006 to 2007 and the IEEE TRANSACTIONS ON CIRCUITS AND SYSTEMS - PART I from 2008 to 2009.

He was the 2004 Chair of the Technical Committee on Nonlinear Circuits and Systems of the of the IEEE CAS Society, a Distinguished Lecturer from 2004 to 2005 a member of the Board of Governors from 2005 to 2008, and he served as the 2010 President of the same society.

In 2012, he was the Chair of the IEEE Strategic Planning Committee of the Publication Services and Products Board and since 2013 has been the first non North-American Vice President of the IEEE for Publication Services and Products.

He was the Technical Program Co-Chair of NDES2000 (Catania), ISCAS2007 (New Orleans), ISCAS2008 (Seattle), ICECS2012 (Seville), as well as the General Co-Chair of NOLTA2006 (Bologna).

• • •



GIANLUCA SETTI (S'89–M'91–SM'02–F'06) received the Dr.Eng. degree (Hons.) in electronic engineering and the Ph.D. degree in electronic engineering and computer science from the University of Bologna, Bologna, Italy, in 1992 and 1997, respectively, for his contribution to the study of neural networks and chaotic systems. From May 1994 to July 1995, he was with the Laboratory of Nonlinear Systems, Swiss Federal Institute of Technology, Lausanne (EPFL), Switzerland, as a

Visiting Researcher. Since 1997, he has been with the School of Engineering, University of Ferrara, Ferrara, Italy, where he is currently a Professor of circuit theory and analog electronics. He held several visiting position as a Visiting Professor/Scientist with EPFL in 2002 and 2005, UCSD in 2004, the IBM T. J. Watson Laboratories in 2004 and 2007, and the University of Washington, Seattle, USA, in 2008 and 2010 and is a Permanent Faculty Member of ARCES, University of Bologna. His current research interests include nonlinear circuits, recurrent neural networks, implementation and application of chaotic circuits and systems, statistical signal processing, electromagnetic compatibility, wireless communications, and sensor networks.

He received the 1998 Caianiello Prize for the Best Italian Ph.D. thesis on Neural Networks. He is also a recipient of the 2013 IEEE CAS Society Meritorious Service Award and co-recipient of the 2004 IEEE CAS Society Darlington Award, of the 2013 IEEE CAS Society Guillemin-Cauer Award, as well as of the Best Paper Award at ECCTD2005, and the Best Student Paper Award at EMCZurich2005 and at ISCAS2011.