

Flexoelectricity in Nematics Confined to Cylindrical Geometry

Original

Flexoelectricity in Nematics Confined to Cylindrical Geometry / Sparavigna, Amelia Carolina. - In: PHILICA. - ISSN 1751-3030. - ELETTRONICO. - 2015:451(2015), pp. 1-5.

Availability:

This version is available at: 11583/2584350 since:

Publisher:

[Salisbury] : Philica

Published

DOI:

Terms of use:

This article is made available under terms and conditions as specified in the corresponding bibliographic description in the repository

Publisher copyright

default_article_editorial [DA NON USARE]

-

(Article begins on next page)

Equations are not being displayed properly on some articles. We hope to have this fixed soon. Our apologies.

[Philica front page](#)[Search](#)[About Philica](#)[Take the tour](#)[Publish your work](#)[Work needing review](#)[Most popular entries](#)[Highest-rated entries](#)[Recent reviews](#)[How to cite Philica](#)[FAQs](#)[Support Philica](#)[Contact us](#)[Get confirmed status](#)

Flexoelectricity in Nematics Confined to Cylindrical Geometry

[Amelia Carolina Sparavigna](#) (Department of Applied Science and Technology, Politecnico di Torino)

Published in physic.philica.com

Abstract

Abstract: External fields act on the order parameter, the tensor which is describing the local order of molecules, driving the liquid crystal cells to their final configuration. The external actions can be an applied magnetic or electric field or the confinement created by the walls of the cell. Here we consider a nematic liquid crystal confined in a cylindrical cell. Besides elasticity, electric field and confinement, we consider the flexoelectricity too. Given the free energy density of the nematic, the corresponding Euler-Lagrange equation is solved numerically. A phase diagram of the director configuration according to the flexoelectricity of the material is obtained. Keywords: Liquid Crystals, Nematics, Confined nematics. Author: A.C. Sparavigna, Department of Applied Science and Technology, Politecnico di Torino, Italy.

Article body

Introduction

The free energy density of a liquid crystal is depending on the distortion of the local order parameter from its uniformly aligned configuration. This quantity contains terms describing the coupling of elastic strains and external fields. In some circumstances, the director field can exhibit a spatial undulated distortion too. In fact, we see helicoidally periodic alignments in liquid crystal materials which are cholesteric or ferroelectric [1]. In nematics, a periodic structure can appear spontaneously too, with period that can be controlled by external factors such as applied fields, saddle-splay elasticity and asymmetric anchoring conditions [2-4]. The electric field controls the instability produced by the flexoelectric effect too [5-7].

In this paper we will consider a nematic liquid crystal confined in a cylindrical cell. Let us assume as order parameter the director field \mathbf{n} , describing the local mean orientation of molecules. The flexoelectric contribution to the bulk free energy is given by $f_{\text{Flexo}} = -\mathbf{P} \cdot \mathbf{E}$. Flexoelectricity is a property of liquid crystals similar to the piezoelectric effect. In certain anisotropic materials, which contain molecular asymmetry or quadrupolar ordering with permanent molecular dipoles, an applied electric field may induce an orientational distortion. Conversely any distortion will induce a macroscopic polarization within the material. The polarization vector \mathbf{P} in the flexoelectric term is then described with a distortion in the nematic director field:

$$\vec{P} = e_S \vec{n} (\vec{\nabla} \cdot \vec{n}) - e_B (\vec{n} \cdot \vec{\nabla}) \vec{n} = e_S \vec{n} \operatorname{div} \vec{n} + e_B \vec{n} \times \operatorname{rot} \vec{n} \quad (1)$$

The two terms in the polarization vector are due to the splay and the bend contribution. The coupling of the polarization \mathbf{P} with an external electric field results in the appearance of a periodic distortion. In fact, Meyer showed that the infinite liquid crystal must be disturbed, the perturbation is periodic along the director orientation and the period is inversely proportional to electric field strength [5]. The nematic planar cell was studied in [7]. Here we will discuss the role of flexoelectricity in a confined geometry with cylindrical symmetry. The problem of a cylindrical confinements had been addressed by the author in previous papers [8,9].

NEWS: The SOAP Project, in collaboration with CERN, are conducting a [survey on open-access publishing](#). Please take a moment to give them your views

Cylindrical cell

Here we are giving a reduced version of the theory proposed in [9]. Let us consider a cylinder with radius R . In this cylindrical cell, we can imagine to have a nematic liquid crystal. We use the frame as in Figure 1 and solve the Euler-Lagrange equation in cylindrical coordinates.

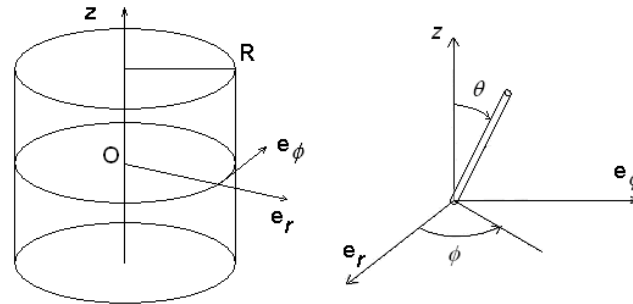


Figure 1: Cylindrical cell and frame of references on the left and on the right the angles of director chosen for calculations

The bulk free energy density in the one elastic constant approximation, with an electric field applied parallel to the z-axis, is given by:

$$f = \frac{1}{2} K \left[(\text{div } \bar{n})^2 + (\text{rot } \bar{n})^2 \right] - \frac{\varepsilon_o \Delta \varepsilon}{2} (\bar{E} \cdot \bar{n})^2$$

In a simplified approach, we assume $\theta = \theta(r)$, only depending on the radial distance, and moreover, $\varphi = 0$. The Euler-Lagrange equation and the bulk free energy density are [9]:

$$\frac{\partial f}{\partial \theta} = \frac{1}{r} \frac{\partial}{\partial r} \left(r \frac{\partial f}{\partial (\partial \theta / \partial r)} \right) \quad (2)$$

$$f = \frac{K}{2} \left[\left(\frac{\partial \theta}{\partial r} \right)^2 + \frac{\sin^2 \theta}{r^2} + 2 \frac{\sin \theta \cos \theta}{r} \left(\frac{\partial \theta}{\partial r} \right) \right] - \frac{\varepsilon_o \Delta \varepsilon}{2} (E \cos \theta)^2 \quad (3)$$

The Euler-Lagrange equation turns out to be:

$$\frac{\sin \theta \cos \theta}{r^2} + \xi^2 \sin \theta \cos \theta = \frac{1}{r} \frac{\partial}{\partial r} \left(r \frac{\partial \theta}{\partial r} \right) ; \quad \xi^2 = \varepsilon_o \Delta \varepsilon E^2 / K \quad (4)$$

Let us note the presence of the dielectric anisotropy in the term which is coupling electric field and director. Moreover, let us write the surface energy density as:

$$f_{Surf} = -W_H \sin^2 \theta_R + W_P \sin^2 \theta_R \quad (5)$$

where $W_H > 0; W_P < 0$

For an anchoring that is favouring an homeotropic alignment of the nematic perpendicular at the wall of the cylinder, we use:

$$f_{Surf} = -W_H \sin^2 \theta_R \quad (6)$$

If we want to avoid the presence of a defect at the axis of cylinder (z-axis), the director must

We aim to suit all browsers, but recommend Firefox particularly:

Nuova Offerta
Formativa
unicampus.it
Vieni a conoscere i

escape in the z-direction. The solution, if the applied electric field is zero, is given by an inverse tangent:

$$\theta^o(r) = 2 \tan^{-1} \left(\beta \frac{r}{R} \right) \quad (7)$$

where $\beta = 1$ means strong anchoring

This is a well-known solution obtained by Belavin and Polyakov [10]. To solve the equation in the case of electric field different from zero, we choose a solution as:

$$\theta(r) = \theta^o(r) + \theta'(r) \quad (8)$$

Using (8), we have two equations to solve:

$$\frac{\sin \theta^o \cos \theta^o}{r^2} = \frac{1}{r} \frac{\partial}{\partial r} \left(r \frac{\partial \theta^o}{\partial r} \right) \quad (9)$$

$$\xi^2 \sin \theta^o \cos \theta^o = \frac{1}{r} \frac{\partial}{\partial r} \left(r \frac{\partial \theta'}{\partial r} \right)$$

The second equation can be solved iteratively. In the numerical solution, it is observed that at the fourth step of iteration the solution is within 0.1%. So we have:

$$\xi^2 \sin \tilde{\theta}^j \cos \tilde{\theta}^j = \frac{1}{r} \frac{\partial}{\partial r} \left(r \frac{\partial \theta^{j+1}}{\partial r} \right) ; \quad \tilde{\theta}^j = \theta^o + \theta^j \quad (10)$$

Actually, we arrive at the following solutions:

$$\theta^o(r) = 2 \tan^{-1} \left(\beta \frac{r}{R} \right) ; \quad \theta^{j+1}(r) = \xi^2 \int_0^r \frac{dr''}{r''} \int_0^{r''} \sin \tilde{\theta}^j(r') \cos \tilde{\theta}^j(r') r' dr' \quad (11)$$

and then at final solution:

$$\theta(r) = \theta^o(r) + \theta^{j+1}(r) \quad (12)$$

To determine the value of parameter β we determine the solution minimizing the reduced total free energy:

$$\frac{F}{2\pi RL} = \int_0^d f r dr + f_{Surf} \quad (13)$$

where L is an arbitrary length of the cylindrical cell.

Flexoelectricity

Let us consider the contribution of flexoelectricity to Euler-Lagrange equation. After calculation, we see that this contribution depends on the difference between the splay and bend flexoelectric coefficients:

$$\frac{\partial f}{\partial \theta} - \frac{1}{r} \frac{\partial}{\partial r} \left(r \frac{\partial f}{\partial (\partial \theta / \partial r)} \right) = (e_S - e_B) E \frac{\sin^2 \theta}{r} \quad (14)$$

Defining two parameters, the equation to solve is the following:

$$\xi^2 \sin \tilde{\theta}^j \cos \tilde{\theta}^j + \Pi \xi \frac{\sin^2 \tilde{\theta}^j}{r} = \frac{1}{r} \frac{\partial}{\partial r} \left(r \frac{\partial \theta^{j+1}}{\partial r} \right) \quad (15)$$

$$\text{where: } (e_S - e_B)E = \Pi \xi \\ b = WR / K$$

After the numerical solution, in Ref.[9], we gave several figures illustrating the role of anchoring parameter b and the dimensionless electric field parameter ξ .

Discussion

As it is intuitively expected, when the electric field is higher than a threshold value, the angle θ goes to zero and the director field is parallel to the cylinder axis, in all the cell. If the flexoelectric parameter Π is large, a distorted configuration (see the Figure 2) is favoured, and the threshold field required for suppressing this configuration is increased. Moreover, if the flexoelectric parameter is large, the angle θ starts to oscillate as the field increases. We must have a huge electric field to suppress the oscillating distortion and have $\cos\theta=0$, that is, with all the nematic aligned parallel to the field, in a uniform configuration.

In the Figure 2, the phase diagram is shown, when anchoring parameter b is fixed and equal to 6. We see three regions, denoted by U for uniform alignment of director parallel to z-axis, D for the director with a deformed configuration, and O when the director is oscillating and cosine becomes negative too. Angle θ turns more than $\pi/2$ on the distance R .

A last note on the flexoelectric term. The flexoelectric vector is a sum of two contributions:

$$\begin{aligned} \vec{P} &= (e_S \vec{n} \operatorname{div} \vec{n} + e_B \vec{n} \times \operatorname{rot} \vec{n}) = & (16) \\ &= e_S D (\sin \theta \vec{u}_r + \cos \theta \vec{u}_z) + e_B R (-\cos \theta \vec{u}_r + \sin \theta \vec{u}_z) = e_S D \vec{n} + e_B R \vec{t} \end{aligned}$$

$$\text{where: } D = \operatorname{div} \vec{n}, R = (\operatorname{rot} \vec{n})_\varphi$$

These two components which are perpendicular each other: when they are coupled with the electric field, parallel to the cylinder axis, we have then the two contributions in the bulk energy with an opposite sign. To conclude, let us discuss the saddle-splay contribution to the free energy. In the previously made assumptions, ($\theta=\theta(r)$, $\varphi=0$), this is a term which is simply renormalizing the value of the surface energy and then it does not need a further discussion.

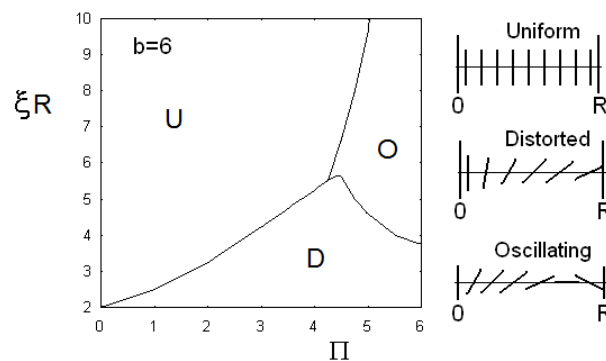


Figure 2. Phase diagram of the cylindrical confinement, when the anchoring parameter b is fixed. The three regions are denoted by U for the uniform alignment of director parallel to the cylinder axis, D when the director has a deformed configuration, and O if director is oscillating and cosine becomes negative too.

References

- [1] Pikin, S.A. Structural transformations in liquid crystals, Gordon & Breach Science Publishers Ltd., 1991.
- [2] Sparavigna, A., Lavrentovich, O.D. and Strigazzi, A. Periodic stripe domains and hybrid-alignment regime in nematic liquid crystals: Threshold analysis. *Phys. Rev. E* 1994, 49, 1344-1352.
- [3] Sparavigna, A., Komitov, L., Lavrentovich, O. and Strigazzi, A. Saddle-splay and periodic instability in a hybrid aligned nematic layer subjected to a normal magnetic field. *Journal de Physique II*, EDP Sciences 1992, 2 (10), 1881-1888.
- [4] Sparavigna, A., Lavrentovich, O.D. and Strigazzi, A. Magnetic field effect on periodic stripe domains in nematic liquid crystals, *Physical Review E* 1995, 792-795.
- [5] Meyer, R.B. Piezoelectric effects in liquid crystals. *Phys. Rev. Lett.* 1969, 22, 918-921.
- [6] Vistin, L.K. Electrostructural effect and optical properties of a certain class of liquid crystals and their binary mixtures, *Sov. Phys. Crystallogr.* 1970, 5(3), 514-515.
- [7] Bobylev, Y.P., Chigrinov, V.G. and Pikin, S.A., Threshold flexoelectric effect in nematic liquid crystals. *Journal de Physique Colloques* 1979, 40(C3), 331-333.
- [8] Palffy-Muhoray, P., Sparavigna, A. and Strigazzi, A. Saddle-splay and mechanical instability in nematics confined to a cylindrical annular geometry, *Liquid Crystals* 1993, 14(4), 1143-1151.
- [9] Sparavigna, A. Role of Lifshitz Invariants in Liquid Crystals, *Materials* 2009, 2, 674-698.
- [10] Belavin, A.A.; Polyakov, A.M. Metastable states of 2-dimensional isotropic ferromagnets, *JETP Lett.* 1975, 22, 245-247.

Information about this Article



This work is licensed under a [Creative Commons Attribution 2.5 License](https://creativecommons.org/licenses/by/2.5/).

The full citation for this Article is:

Sparavigna, A. (2015). Flexoelectricity in Nematics Confined to Cylindrical Geometry. *PHILICA.COM Article number 451*.

[<< Go back](#)

[Review this Article](#)

[Printer-friendly](#)

[Report this Article](#)

Website copyright © 2006-07 Philica; authors retain the rights to their work under [this Creative Commons License](https://creativecommons.org/licenses/by/2.5/) and reviews are copyleft under the [GNU free documentation license](https://www.gnu.org/licenses/).
Using this site indicates acceptance of our [Terms and Conditions](#).

This page was generated in 0.1555 seconds.