

REVISIT

TO WUXI EXPERIMENTAL BUILDING

2014. 05

CONTENTS

INTRODUCTION  
Historical Source & Objective

01



GENERAL IMPRESSION  
Living Environment

03



LIVING STORIES  
Renovation Activity

15



## INTRODUCTION

At the northern foot of Mountain Hui sites the first support building project in China. Completed in 1985, it covers a gross area of 12,100 m<sup>2</sup> with the building area of 8,500 m<sup>2</sup> and is composed of eleven clusters with 217 households. Thirty years passed after realization, this project is still widely discussed while its current situation is unknown. That is why this study is conceived.



Original Photos (Provided by Prof. Bao Jiasheng)

GENERAL IMPRESSION

ITEMS

Public Space

The public space between buildings is left for the users' future activity.



Shared Courtyard

Shared courtyard is designed in each building.



Private Gardens

Private gardens are designed in the entrance or terrace.





## THE USE OF OPEN SPACE

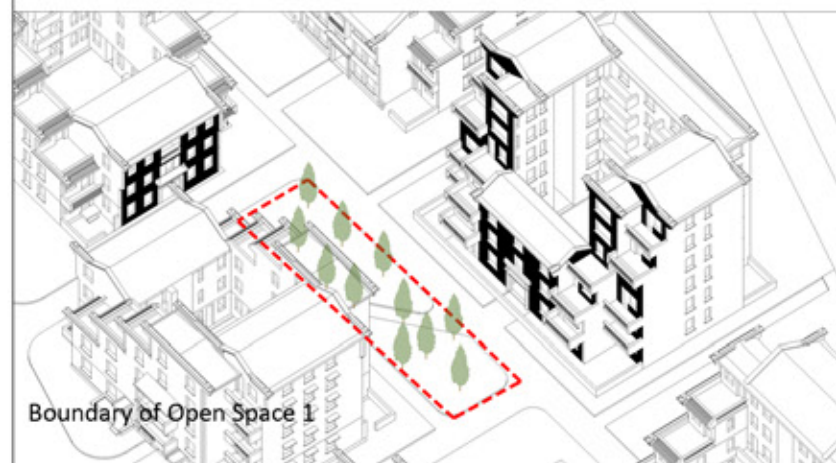
Open space between buildings is not well used. Trees are seldom pruned, the grass is quite overgrown, and public facilities are disorderly arranged. Some people dry clothes or park the car there, but they would not stay longer.



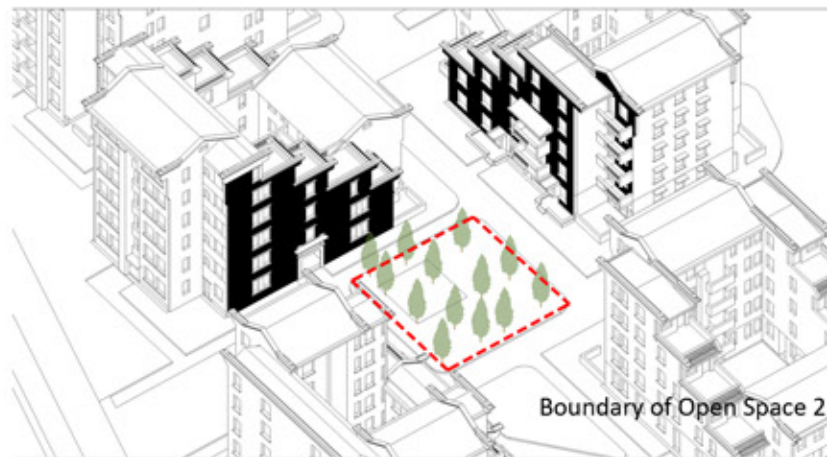
Picture of Open Space 2



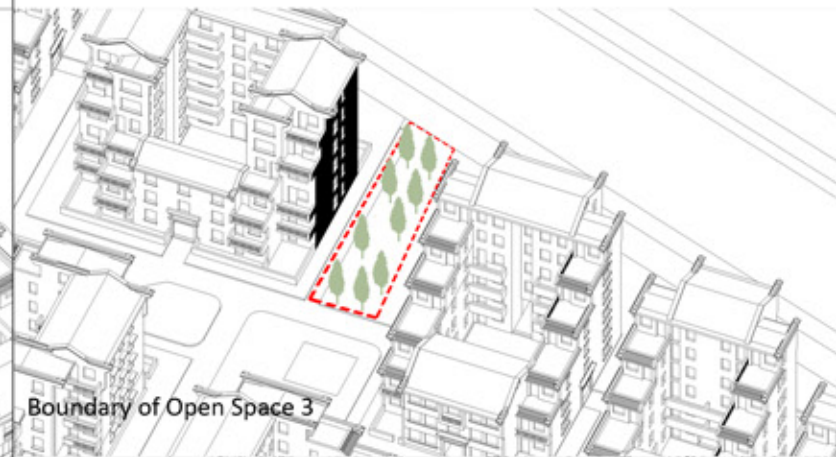
Picture of Open Space 4(a)



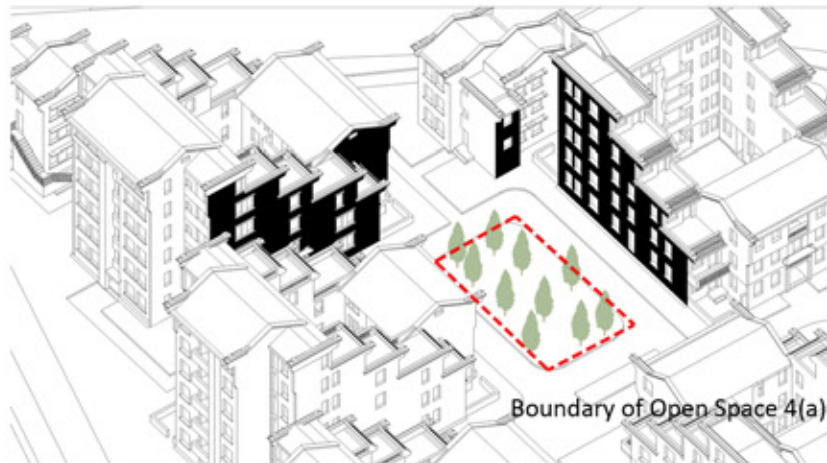
Boundary of Open Space 1



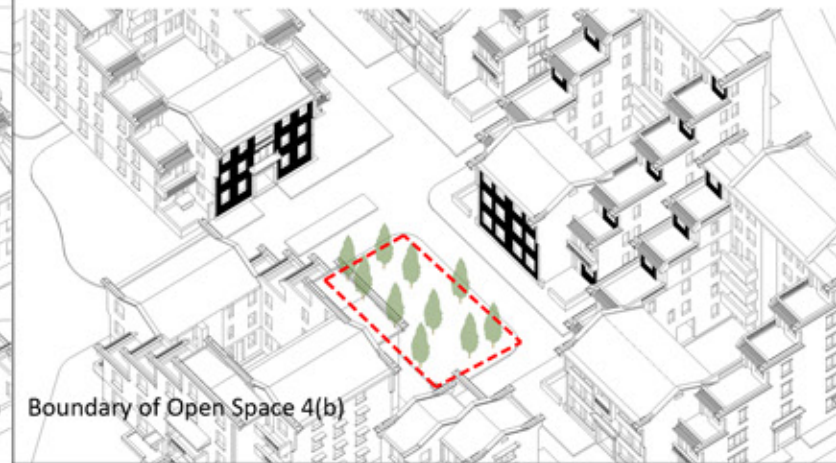
Boundary of Open Space 2



Boundary of Open Space 3



Boundary of Open Space 4(a)



Boundary of Open Space 4(b)



Picture of Open Space 1



Picture of Open Space 3



Picture of Open Space 4(b)



## THE USE OF OPEN SPACE

It is observed that the space along river is in a better condition. It is now the most pleasant place for chatting. While several suites facing the community road are used as shop or workplace, which have a positive on the open space along road.



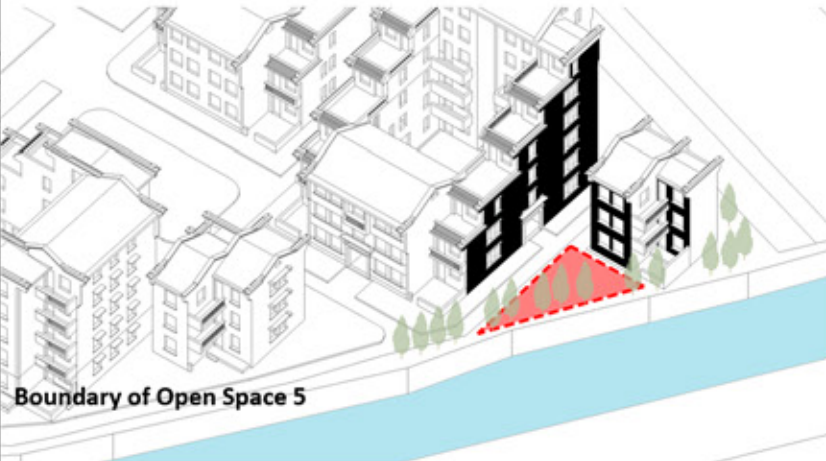
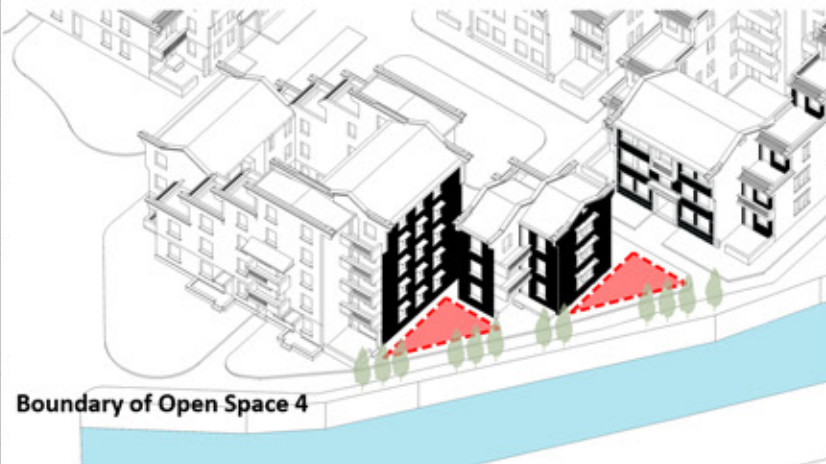
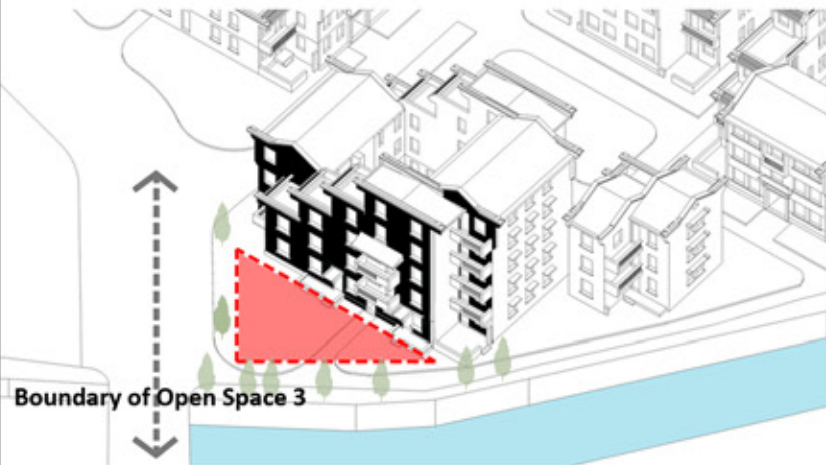
**Picture for Open Space 1**

Wooden benches are provided by the municipal department. People may have a rest here, but seldom stay for a long time.



**Picture for Open Space 2**

The workplace has a positive influence on the open space along the street.



**Picture for Open Space 3**

People living in the northern part like to dry clothes in the grassy field which is with wonderful sunshine.



**Picture for Open Space 4**

People like to stand and chat by the river. Some of them even do their handwork there.



**Picture for Open Space 5**

Some trees are planted by residents, and a set of stone table and stool is provided by a family in the ground floor.

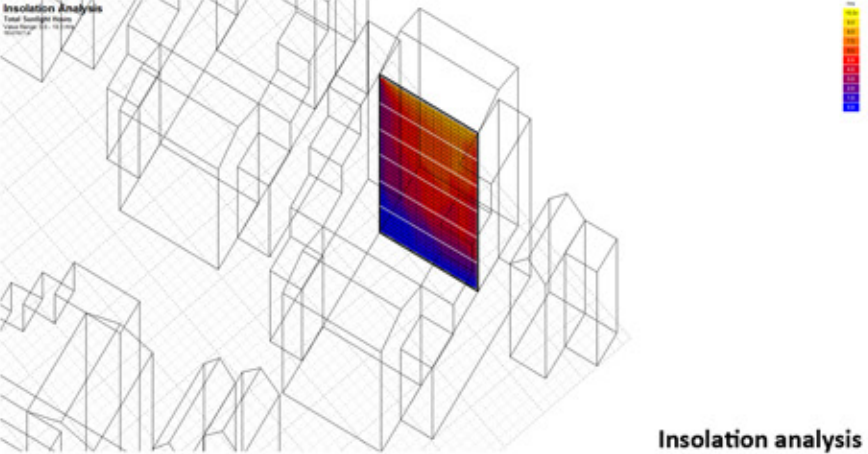


SHARED COURTYARD

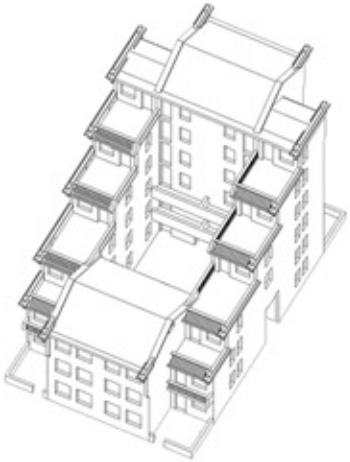
Shared courtyard is designed for every building in order to provide the opportunity for neighborhood communication. It should be admitted that this special building form has a negative impact on the natural lighting condition of suites in the northern part. And it attributes to users' wide complaints of this community.



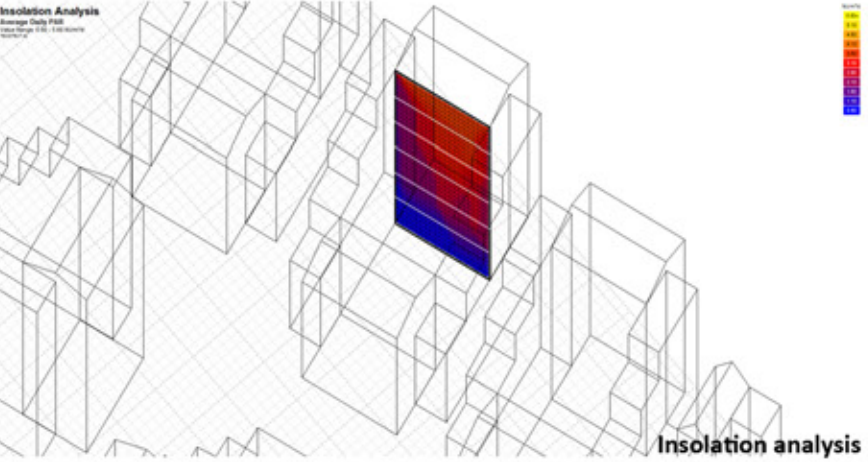
Type A



Insolation analysis



Type B

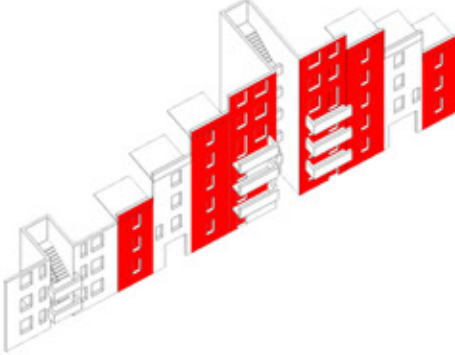


Insolation analysis

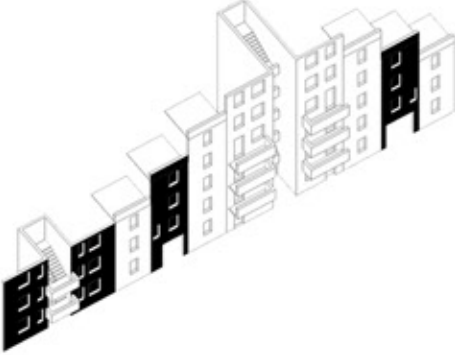
However, it is observed that only very few people would stay at the courtyard although various accesses are design by the architect. In the group discussion, 10 participants attributes the disadvantage to the visual noise especially to the 'sensitive rooms' (for example, bedroom). While 6 of them mentioned the influence of 'negative rooms', for example bathroom and kitchen.



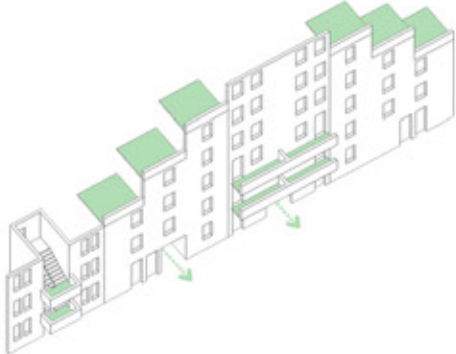
Access



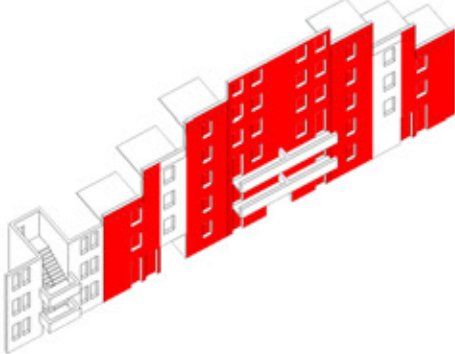
Sensitive rooms



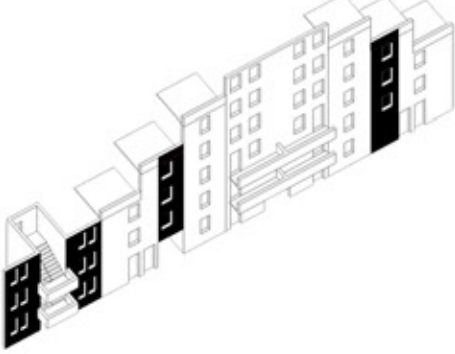
Negative rooms



Access



Sensitive rooms

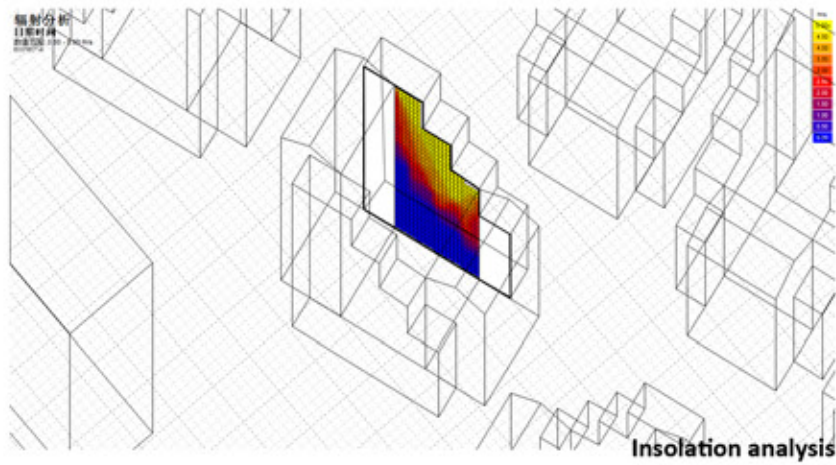


Negative rooms





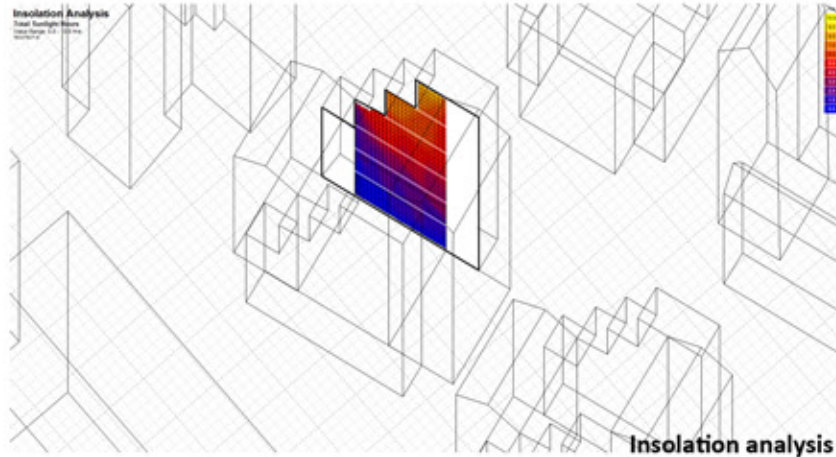
Type C1



Insolation analysis



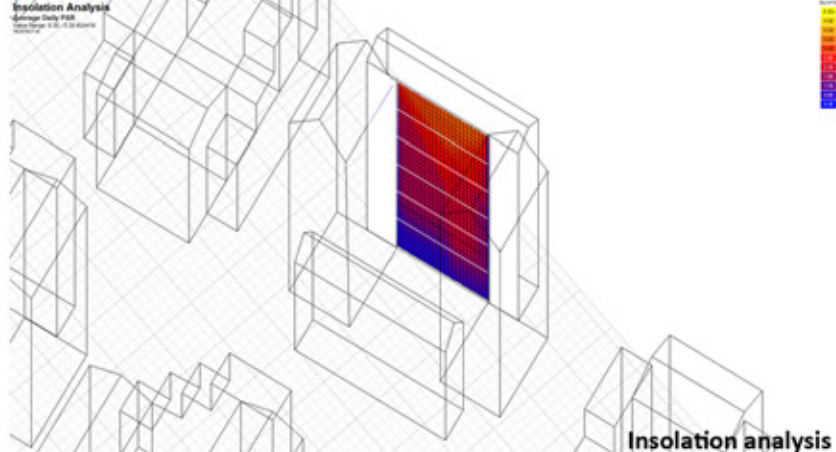
Type C2



Insolation analysis



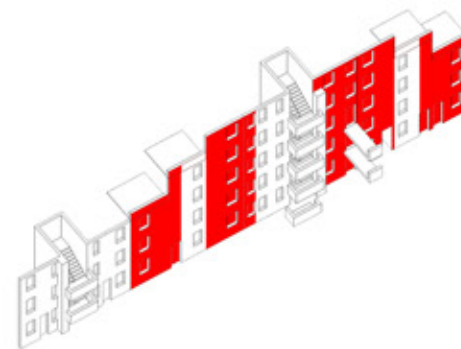
Type D



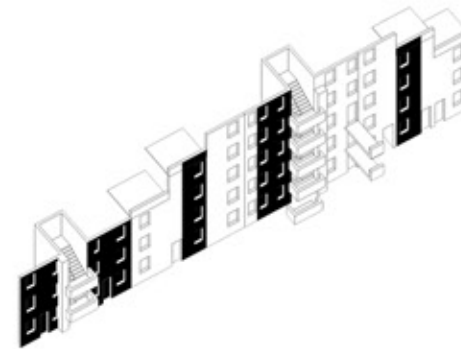
Insolation analysis



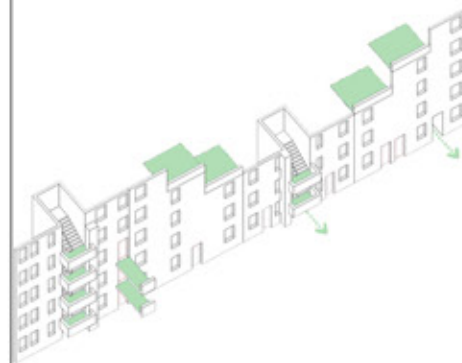
Access



Sensitive rooms



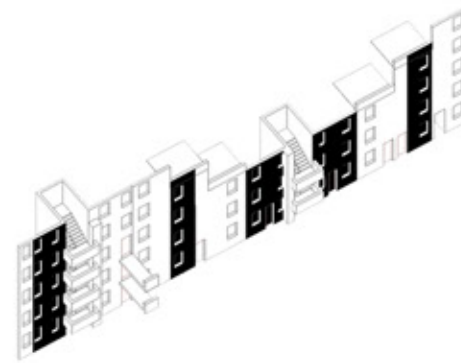
Negative rooms



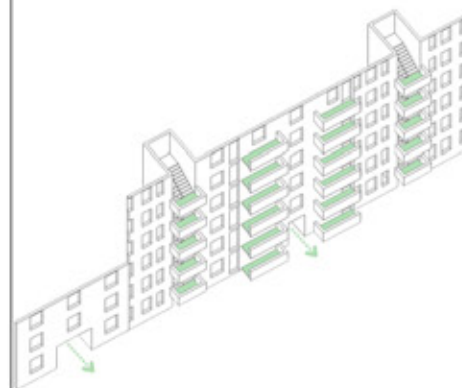
Access



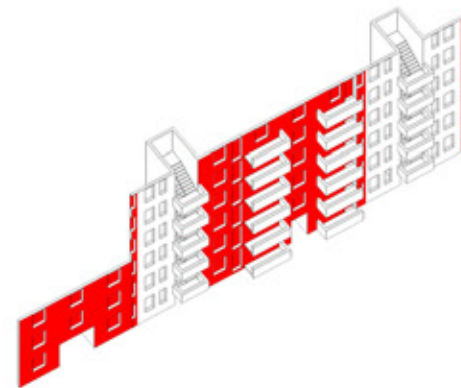
Sensitive rooms



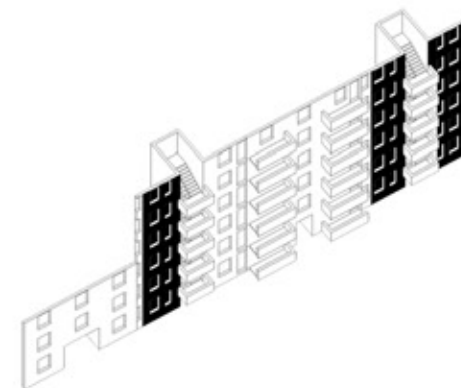
Negative rooms



Access



Sensitive rooms

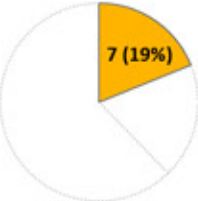


Negative rooms

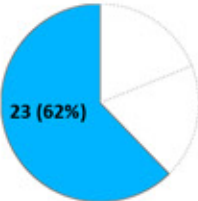


## ENTRANCE GARDEN

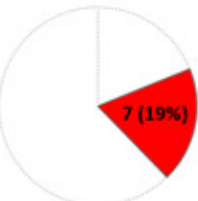
Private gardens in the ground floor are used in three ways. Among all the 37 entrance gardens, 7 of them are completely abandoned. 23 are rebuilt as additional room, the great majority of which is storage room. The rest maintains the original function.



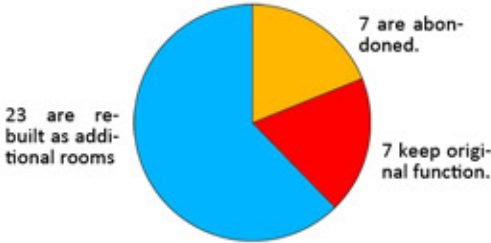
Abandoned



As additional room



Renew as a garden



## TERRACE

It is observed that spacious terraces that are design as private garden are now with two forms. Some maintain the original design, while the rest is shut off by users. The unorganized renovation of terrace has a negative influence on the appearance of building.

	Open	Closed	Total
South-facing	10	26	36
North-facing	0	0	0
East-facing	2	10	12
West-facing	1	11	12



Open Terrace



Closed Terrace

## BALCONY

Sealing balcony is very popular. While only a few balcony are left open.

		Open	Closed	Total
Outside the courtyard	South-facing	10	33	43
	North-facing	0	0	0
	East-facing	0	10	10
	West-facing	2	4	6
Inside the courtyard		1	39	40



Open Balcony



Closed Balcony



LIVING STORIES

The renovation experience of sixteen families is recorded.

Building	Family	Renovation				Page
		Reorganization of internal space	Area extension	Driven by spiritual demand	The change of function	
Type A	A1	●	●			17
	A2	●	●			39
	A3		●			40
	A4	●	●	●		23
Type B	B1	●	●			37
Type C	C1	●	●			27
	C2	●	●		●	29
	C3	●	●		●	31
	C4	●	●			33
	C5	●	●			41
	C6		●			42
	C7		●			35
Type D	D1	●	●			38
	D2		●			19
	D3			●		21
Type 甲	甲1			●		25







Introduction:

In 1985, a couple moved in this apartment with their youngest son (24 years old). After the son's marriage, the old dining room came to be too crowded to bear. As a result, the wall between kitchen and dining room was removed in 1990. In the next year, the third generation was born and the living area was obviously insufficient. Instead of making a renovation, the grandchild was sent to her (maternal) grandparent's home at the age of nine until the old couples moved out in 2004.

Fig. Picture of the dining room

Current Layout

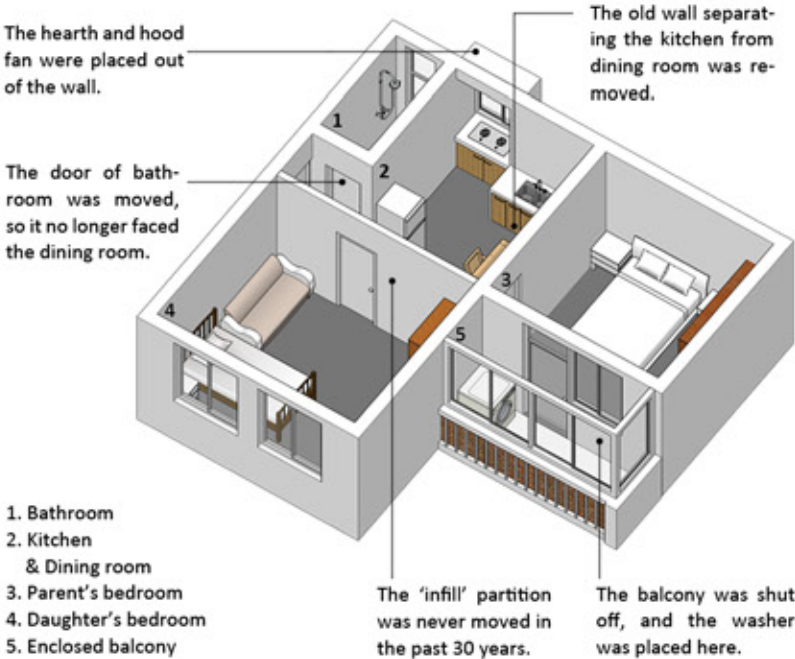


Fig. Location in the community

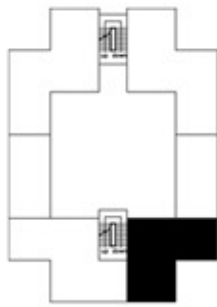
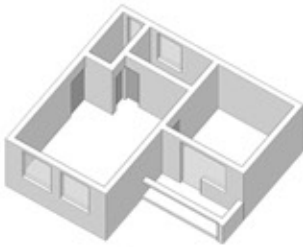


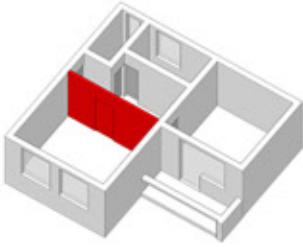
Fig. Location in the building

Stage 1  
(by architect)



**Support:**  
Facade elements, windows, doors, enclosure wall of kitchen and bathroom.

**Infil:**  
A partition

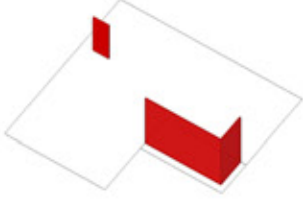


**Result:**  
Apartment with two bedrooms, a kitchen, a bathroom and a hall.

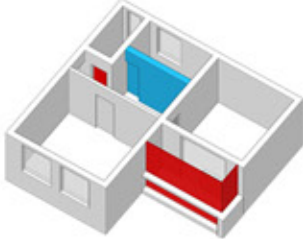
Stage 2  
(by users)



**Remove:**  
The wall dividing kitchen and the hall; the door of the bathroom.



**Add:**  
A door for bathroom, and windows in the balcony.



**Result:**  
The kitchen was opened; door of the bathroom was moved; the balcony was shut off.





Introduction

The householder is a couple about 75 years old. In 1985, they moved here as relocated household. In the past 30 years, their renovation could be concluded as three aspects - the 'infill' partition was renewed; the entrance garden was rebuilt to a storage room; the balcony was shut off.

Fig. Picture of the additional room

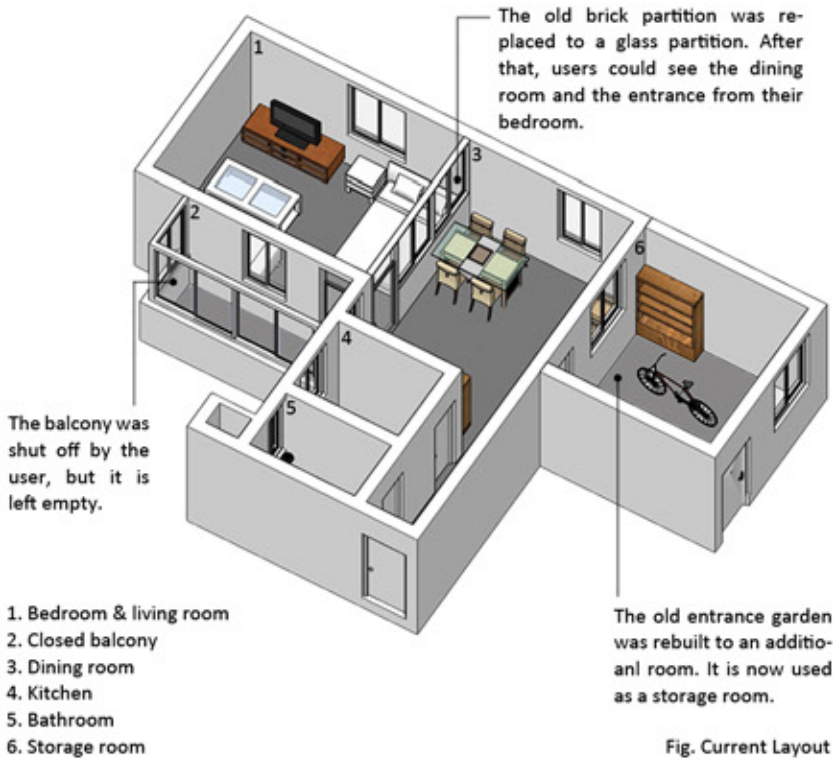


Fig. Current Layout



Fig. Location in the community

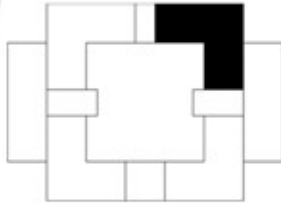
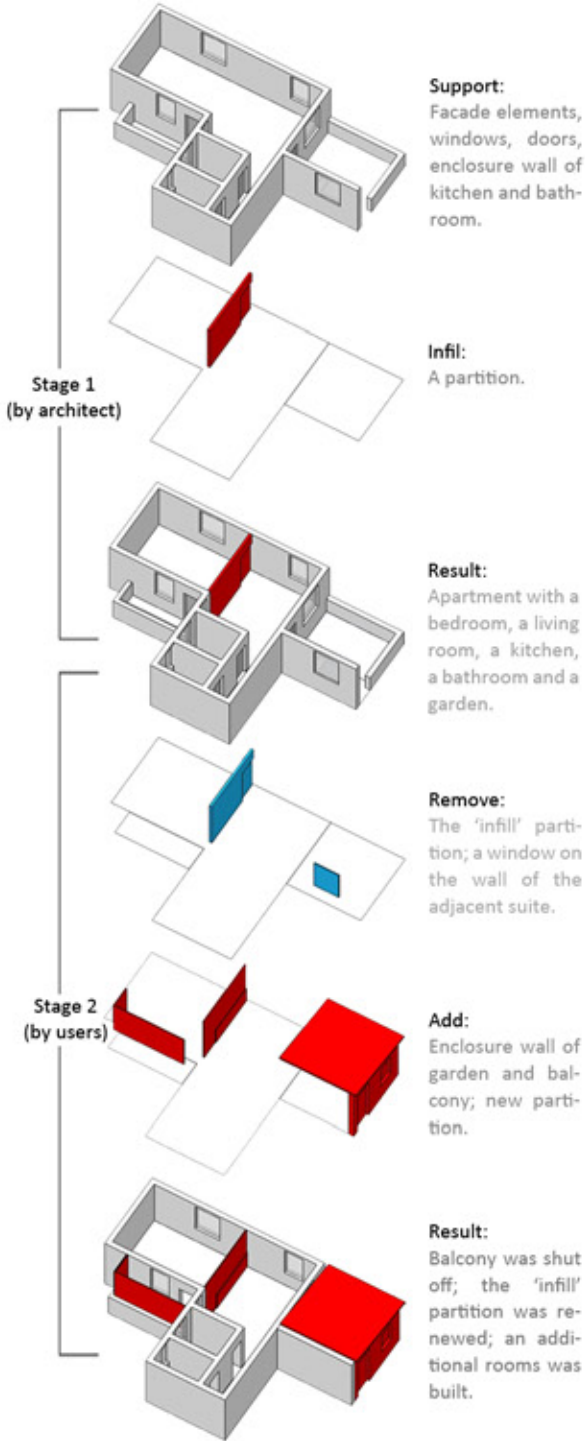


Fig. Location in the building







Introduction

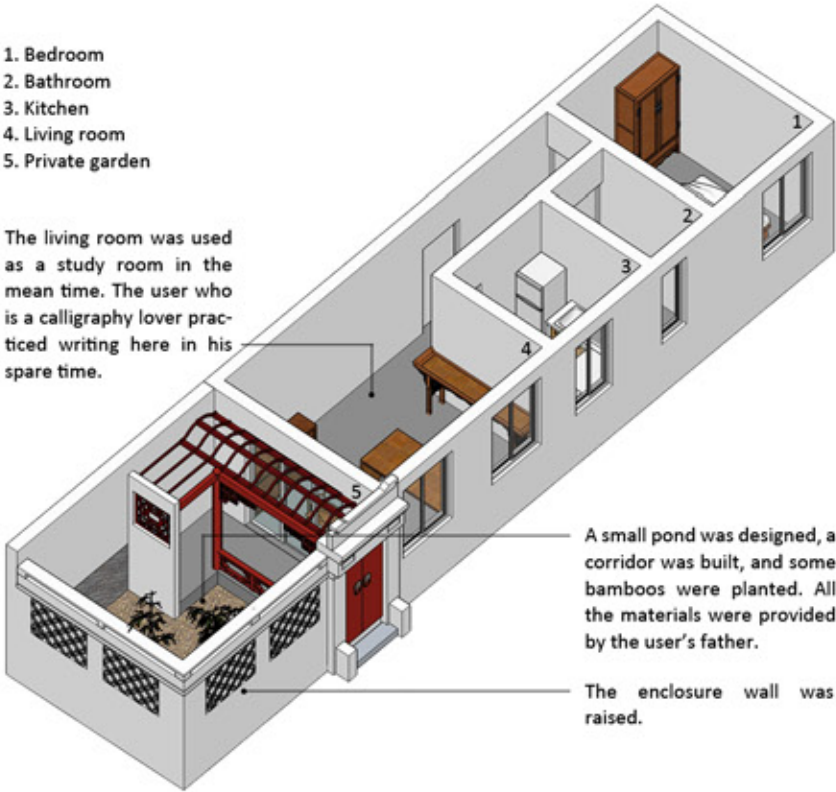
The current user is a 27 year-old journalist. In 1985, his father bought this suite and presented it to the son in 2005. The renovation was under the direct control of the father. With great interest in ancient building, he tried to renew the suite to a traditional Chinese building. And the son also participated in the work.

Fig. Picture of the garden

Current Layout

- 1. Bedroom
- 2. Bathroom
- 3. Kitchen
- 4. Living room
- 5. Private garden

The living room was used as a study room in the mean time. The user who is a calligraphy lover practiced writing here in his spare time.



A small pond was designed, a corridor was built, and some bamboos were planted. All the materials were provided by the user's father.

The enclosure wall was raised.



Fig. Location in the community

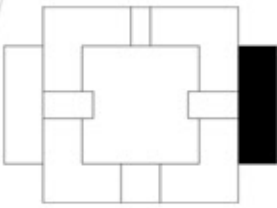


Fig. Location in the building

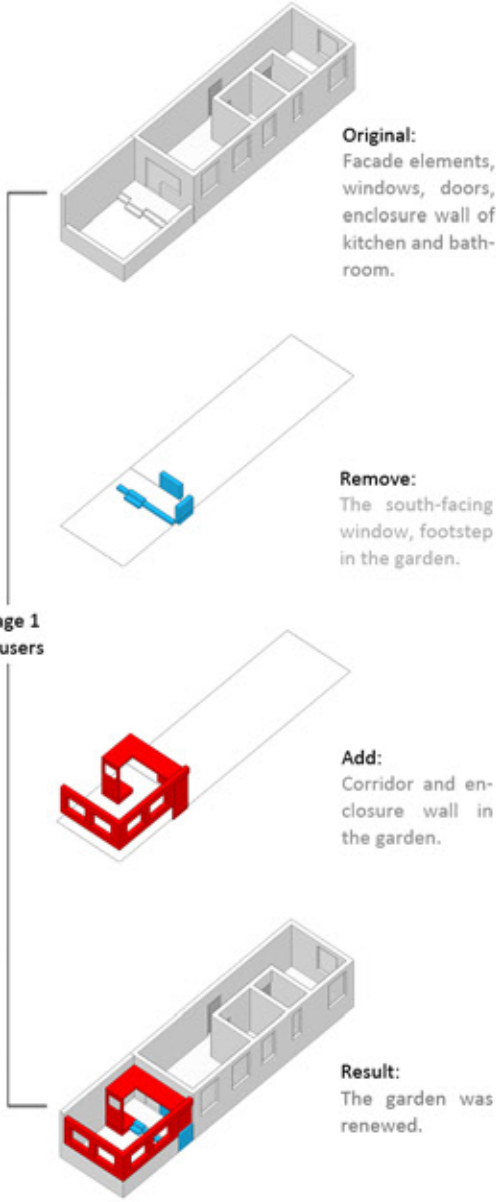


Fig. Renovation Process

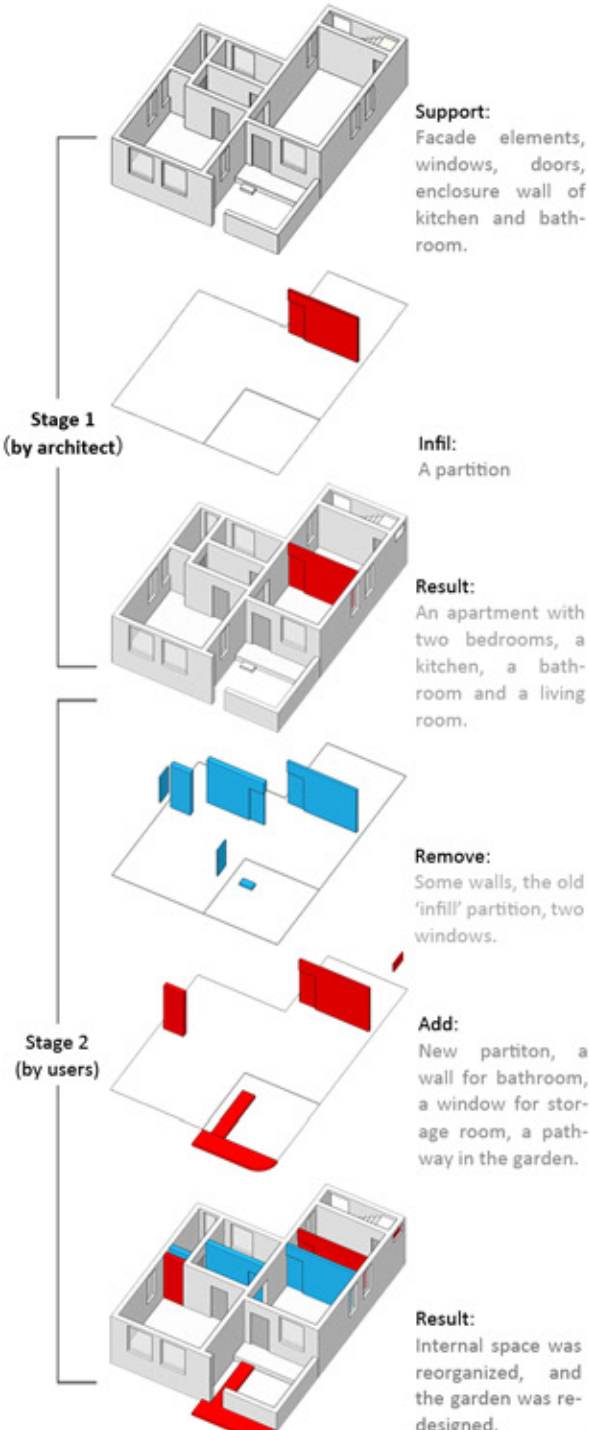
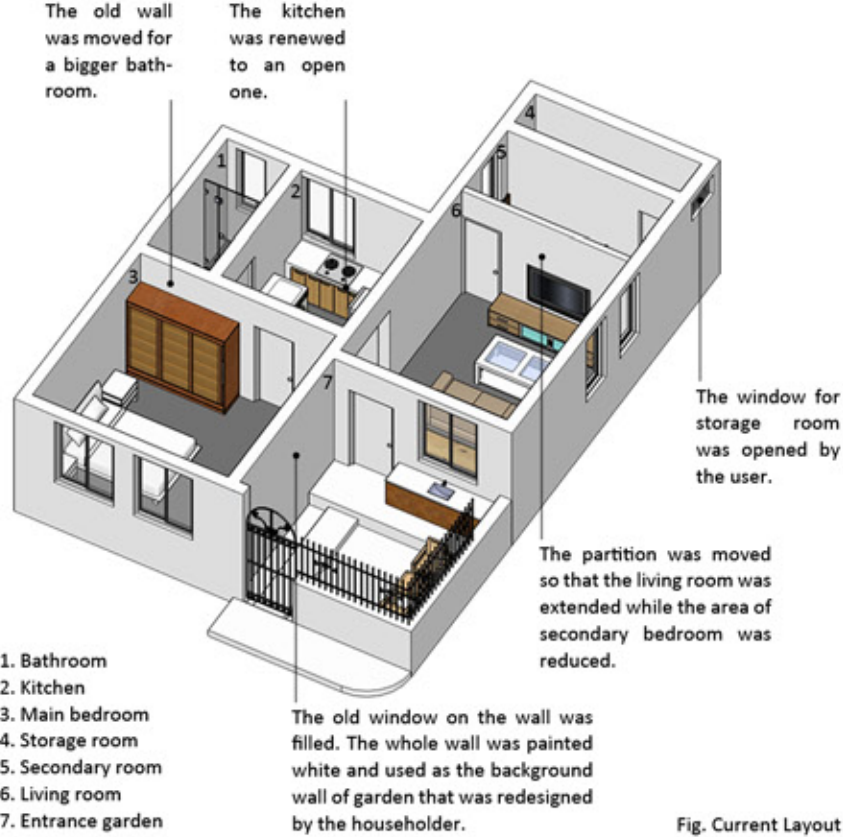




Fig. Picture of the entrance

Introduction

The current householder is a new couple (27 years old) who bought this suite in 2004 for the wonderful location of the community. Being unsatisfied with the area of kitchen and living room, the reorganization of internal space was organized shortly after they bought the suite.







Introduction

The householder is a couple about 55 years old. They live in this community since 1985, and this is the couple's second suite that is bought in 2001. As an antique collector, the husband uses this suite as his home and his own exhibition hall. All the furniture is antique. The renovation is driven by this factor as well.

Fig. Picture of the internal space

Current Layout

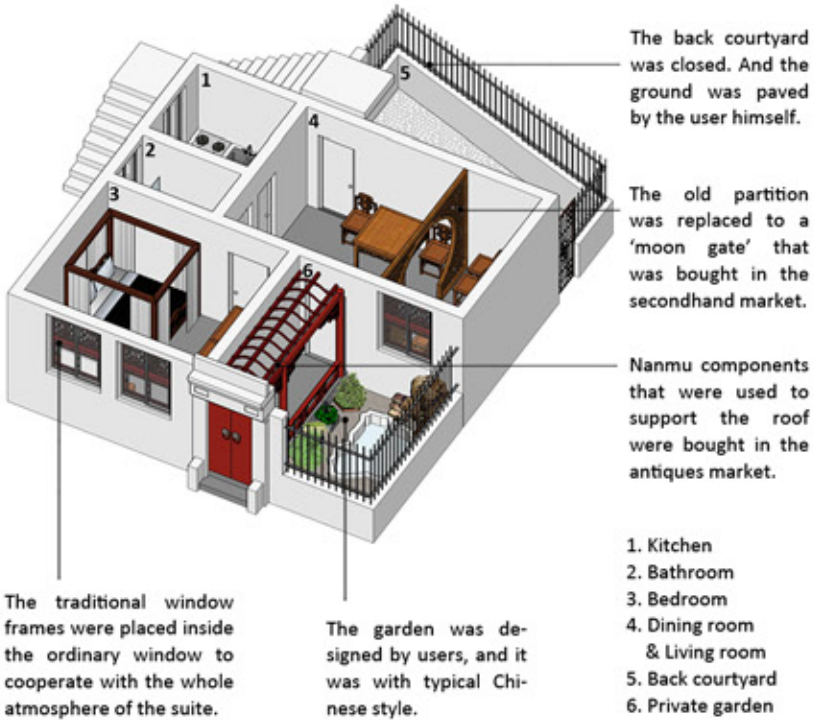
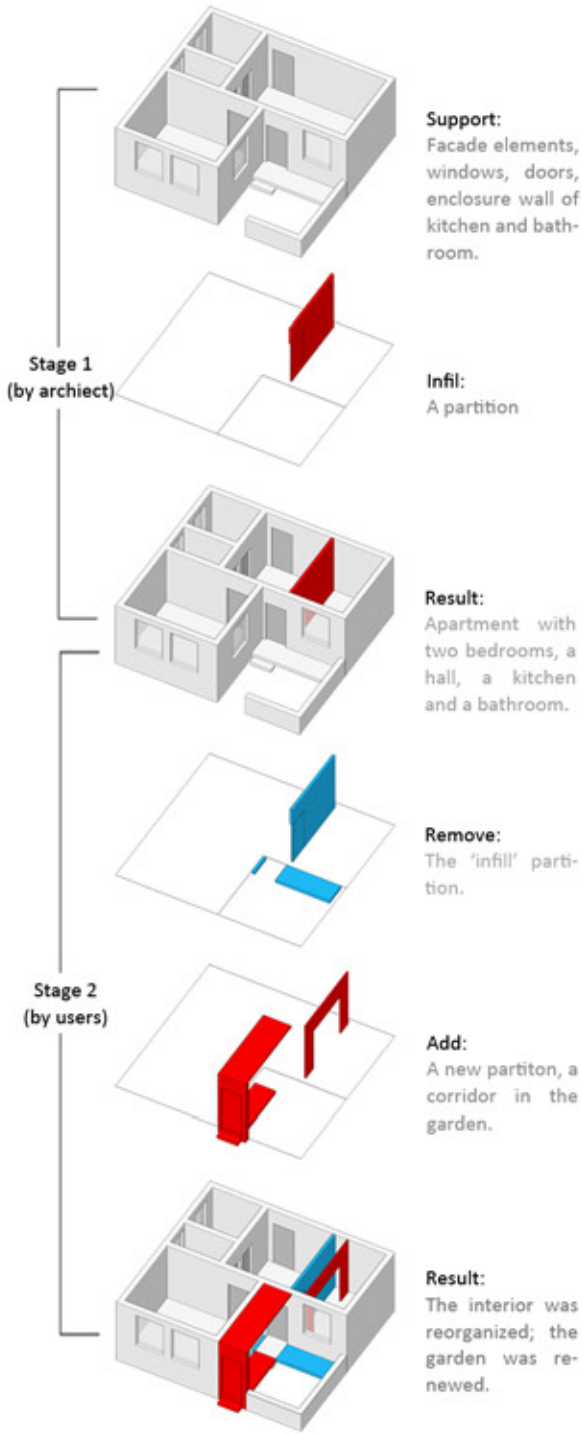


Fig. Location in the community

Fig. Layout after renovation







Introduction

The current users are a couple about 35 years old and a 9 year-old daughter. In 2004, the couple bought this suite. Being unsatisfied with the narrow kitchen, they reorganized the space of kitchen and bathroom before they moved in.

Fig. Picture of the internal space

Current Layout

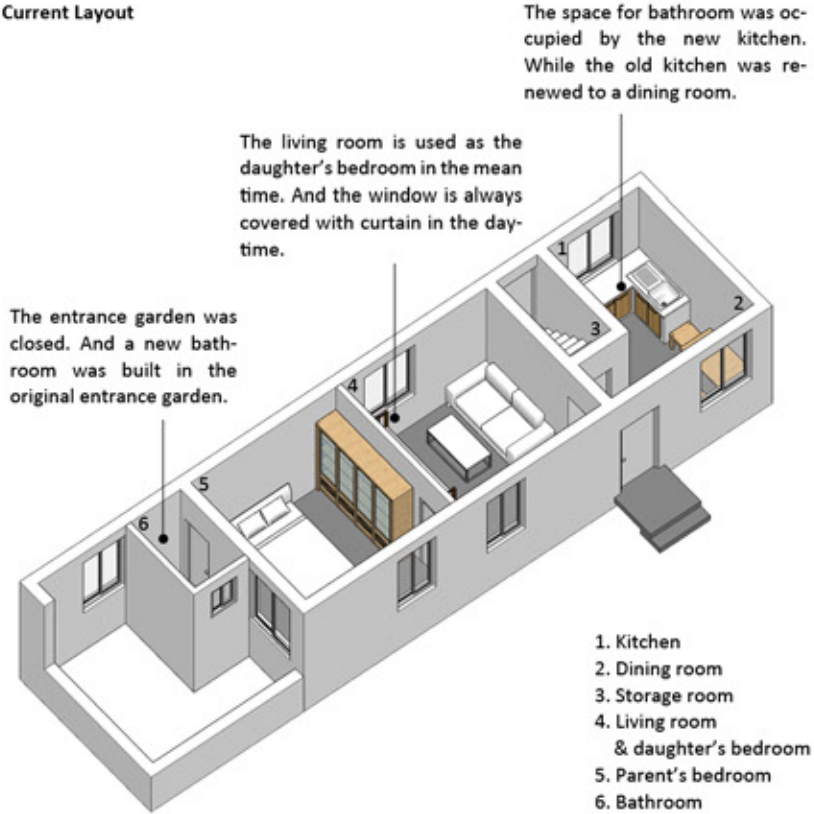


Fig. Location in the community

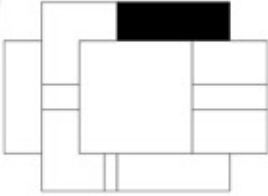
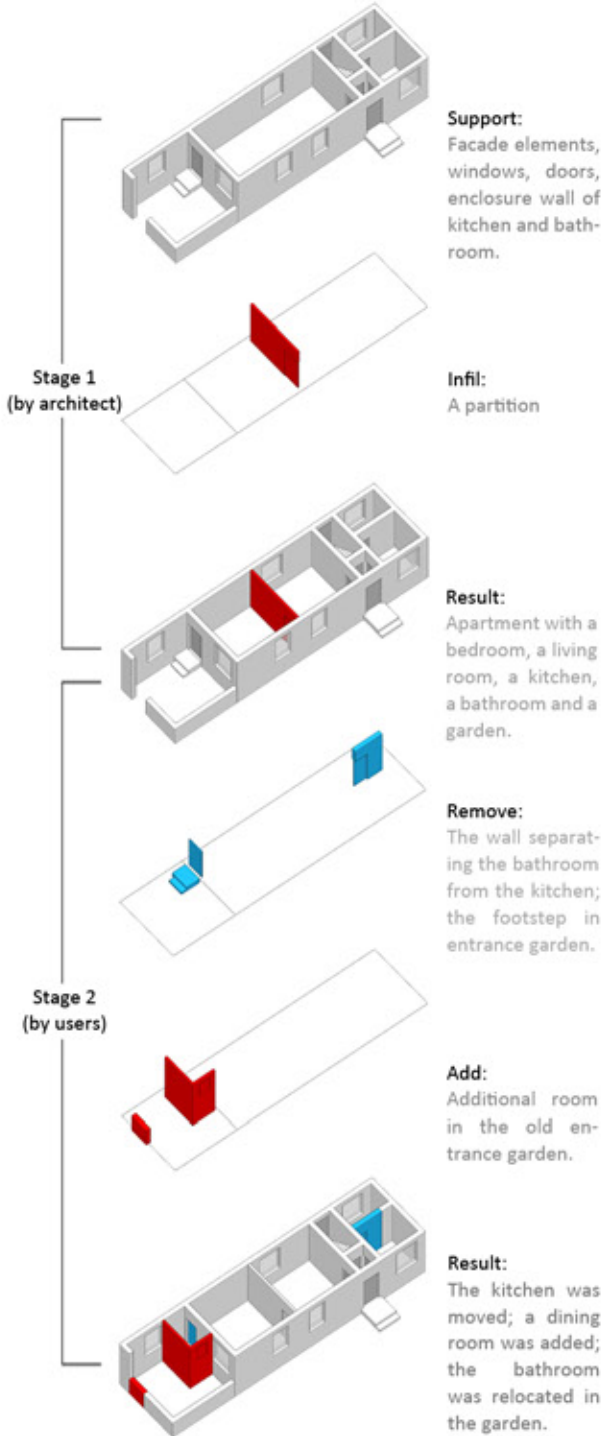


Fig. Location in the building







Introduction

The suite is used as a workplace from the very beginning and the household is a 54 year-old tailor. There were two main renovations in this suite in the past thirty years. One was conducted in 1986, shortly after moving in. The user added a partition to divide the suite into a living part and a small tailor shop. The other was conceived since 2001, in which the whole suite was changed to a dry-cleaning shop.

Fig. Picture of the internal space

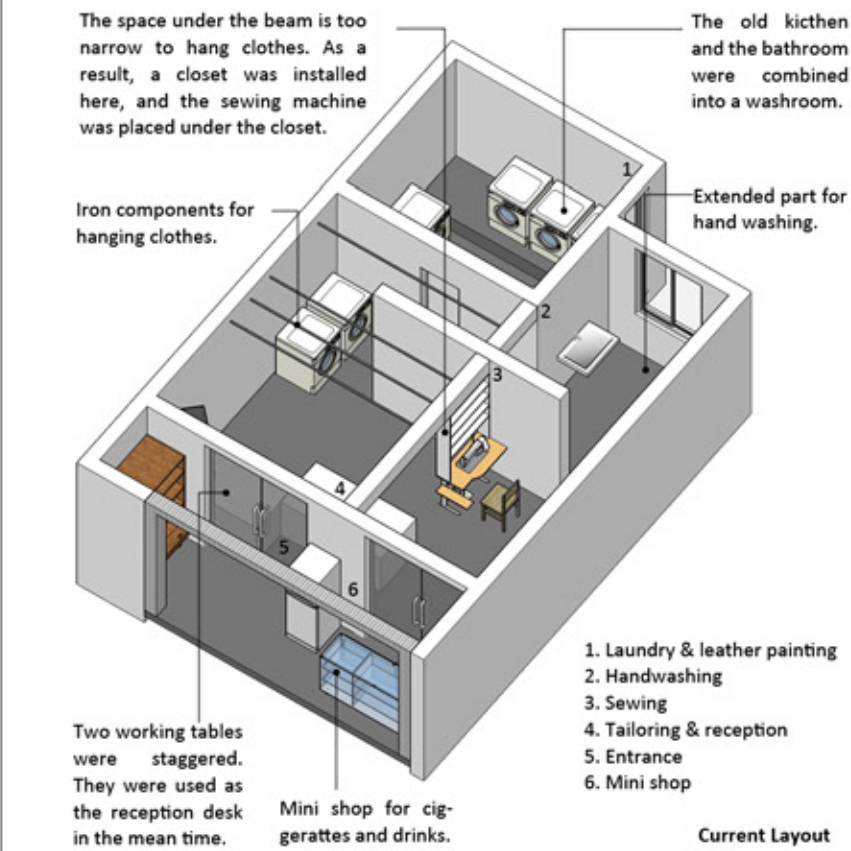


Fig. Location in the community

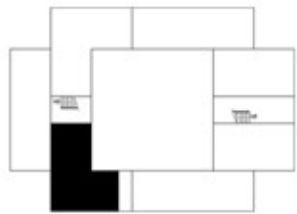
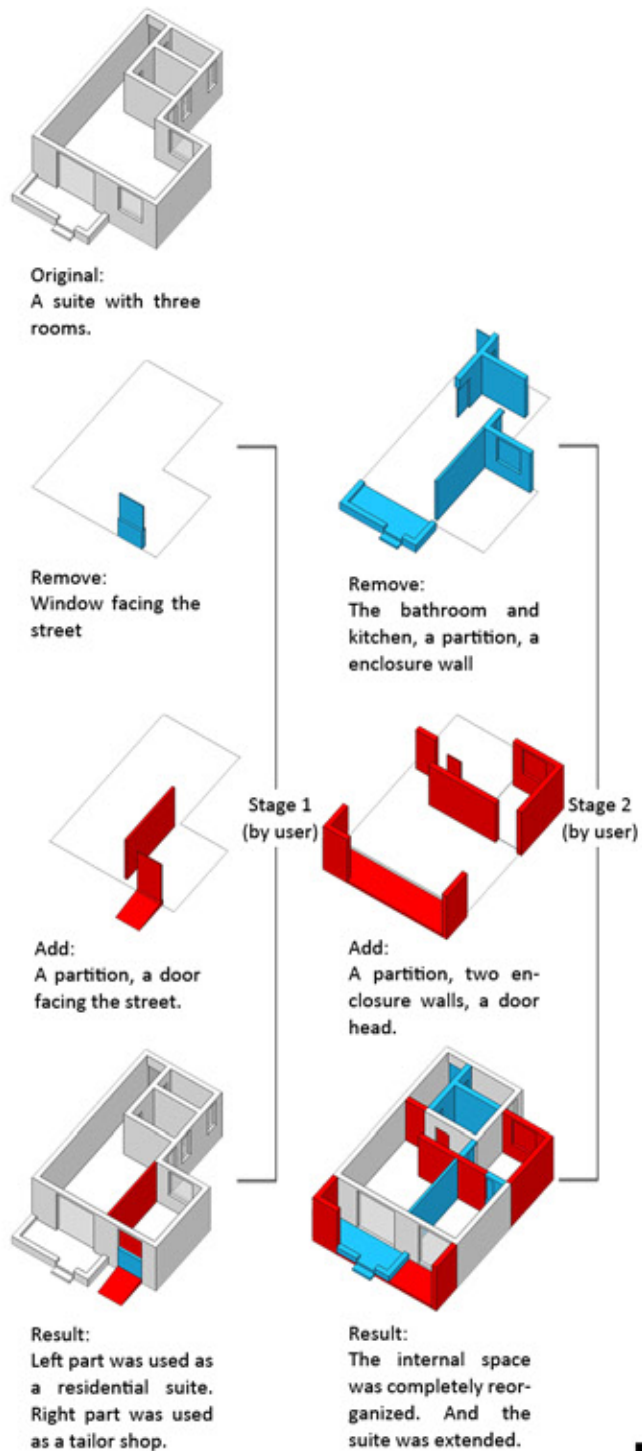


Fig. Location in the building







Introduction

This is a rented suite that is used as storage house of fruits. The householder is living in Shanghai with his wife and son, and this apartment is rented to the fruit seller since 2009. The renovation is conducted by the rent. After that, two storage rooms are separated; the entrance garden is changed to an office; and the bathroom and kitchen are left empty.

Fig. Picture of the new office

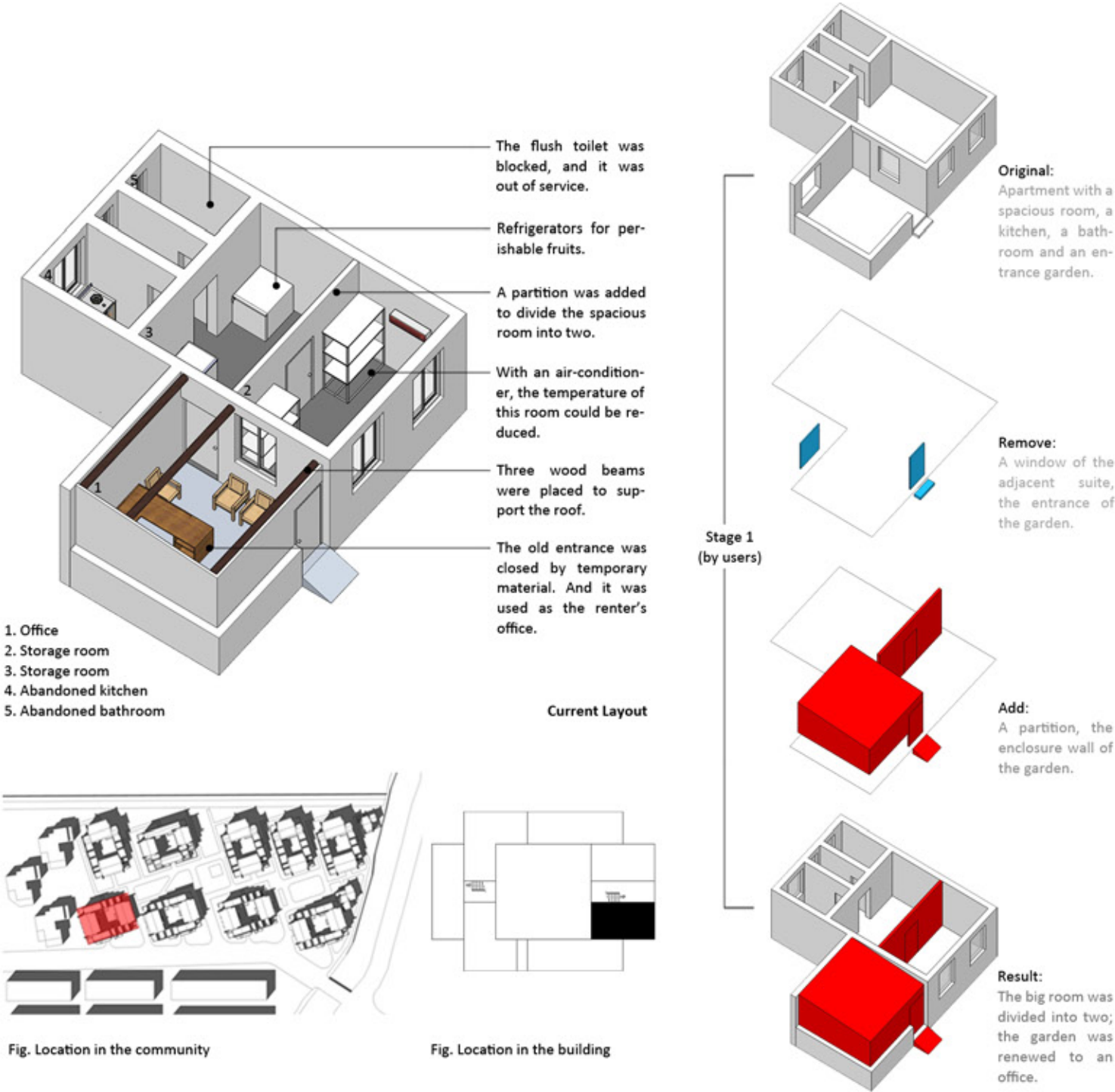


Fig. Location in the community

Fig. Location in the building





Introduction

This is an apartment for a family of three - the couple are bank clerks of about 55 years old and their son is a 24 year-old doctor. In thirty years' living, their renovation focuses on area extension. The couple's bedroom was extended, while the duplex floor was built to provide an independent room for the son.

Fig. Picture of the internal space

Current Layout

- 1. living room
- 2. Dining room
- 3. Son's bedroom
- 4. Parent's bedroom
- 5. Bathroom
- 6. Kitchen

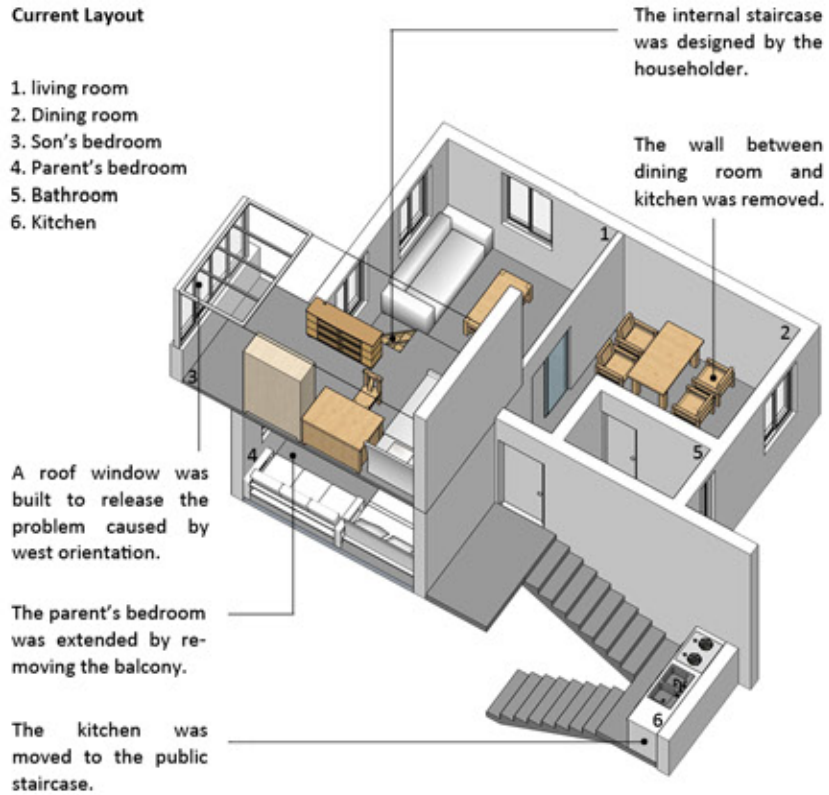


Fig. Location in the community

Fig. Location in the building

Stage 1  
(by architect)



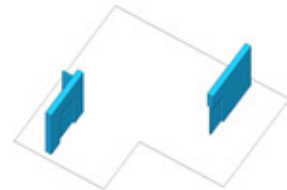
**Support:**  
Facade elements, windows, doors, enclosure wall of kitchen and bathroom.



**Infil:**  
One partition

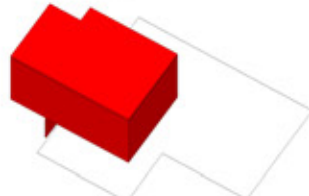


**Result:**  
Apartment with bedroom, living room, bathroom, kitchen, dining room, and balcony.

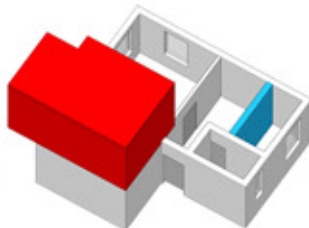


**Remove:**  
Walls of the kitchen and the balcony.

Stage 2  
(by users)



**Add:**  
A wall for the old balcony; and the second floor.



**Result:**  
The balcony was combined with the couple's bedroom; kitchen was opened; new balcony and son's room were built in the second floor.





The current householder is a couple about 75 years old. In 1985, the man's single mother moved in the suite without making any renovation. After the mother's passing away in 2000, the couple moved here for its wonderful natural lighting. For enjoying the sunshine, they made the first renovation in 2013 - a sunshine room was built outside their house.

Fig. Picture of the internal space

- 1. Bathroom
- 2. Kitchen
- 3. Living room & Dining room
- 4. Bedroom
- 5. Sunshine room

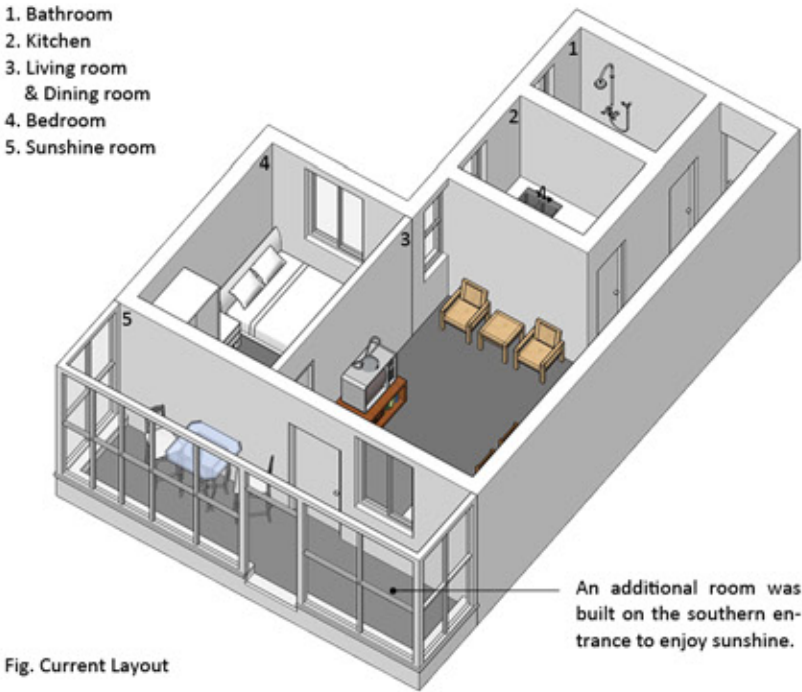


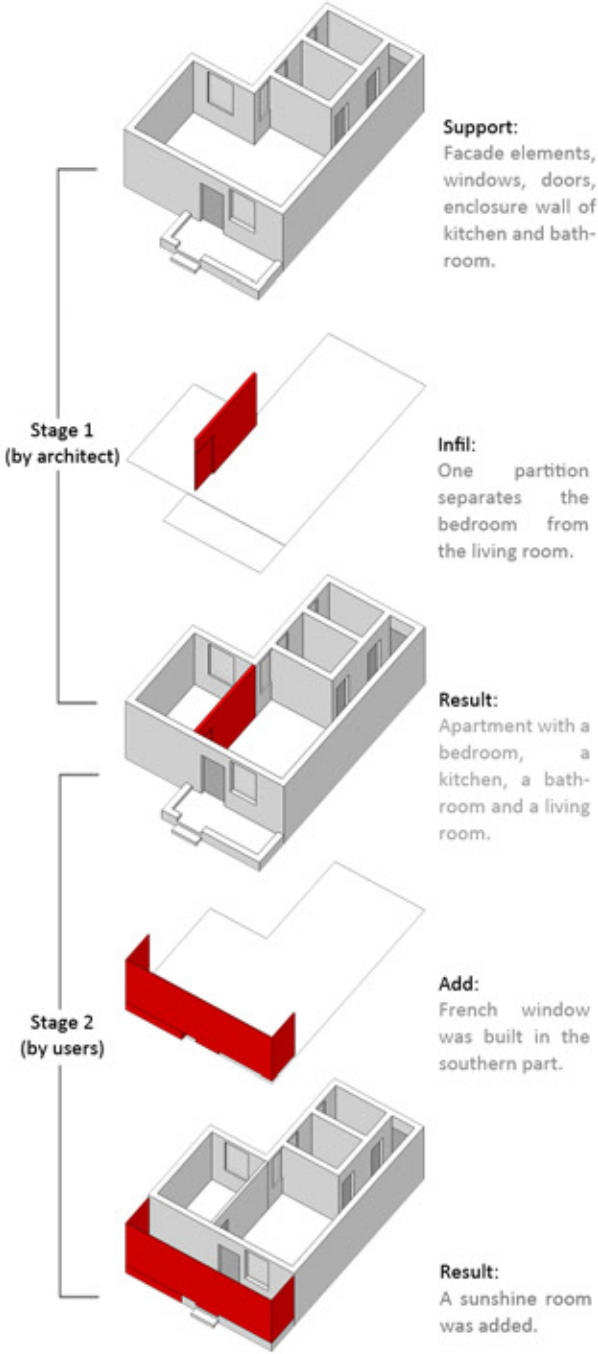
Fig. Current Layout



Fig. Location in the community



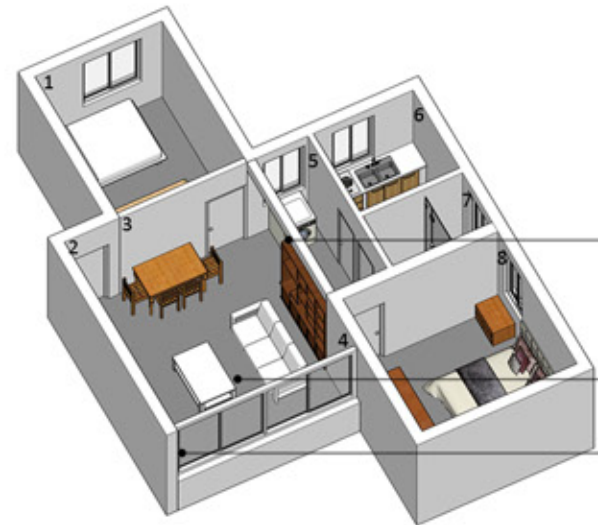
Fig. Location in the building





FAMILY B1

This is a suite for a family of three - parent with their seven-year-old daughter. In 2003, the couple bought the apartment for their marriage. Just before moving in, they changed all the windows and doors, and laid the floor. Besides, the balcony was shut off to get a larger living room. The shelf in the hall was customized in 2009.



- 1. Daughter's bedroom
- 2. Entrance
- 3. Dining room
- 4. Living room
- 5. Corridor
- 6. Kitchen
- 7. Bathroom
- 8. Parent's bedroom

A shelf was customized to separate the hall from the corridor.

The old balcony was now used as part of the living room.

The balcony was shut off.



Fig. The location in community

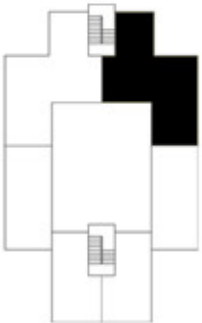
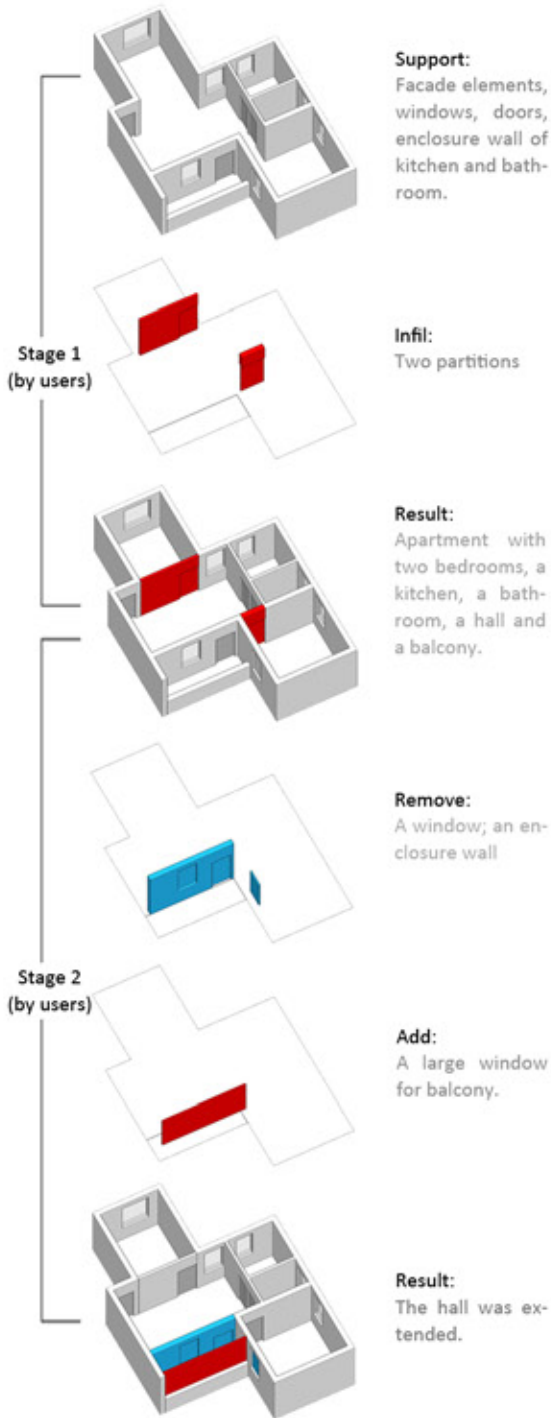


Fig. The location in building



FAMILY D1

This is a suite for a family of three - a couple about thirty years old and their two-year-old son. In 2010, the couple bought this apartment, and the renovation was conducted before they moved in.



The old partition was removed so that the old bedroom was changed to a living room.

The balcony was closed, and a set of closet was customized.

The young son shares the same bedroom with his parents.



Fig. The location in community

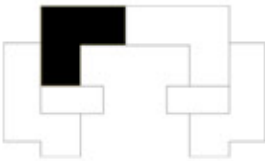
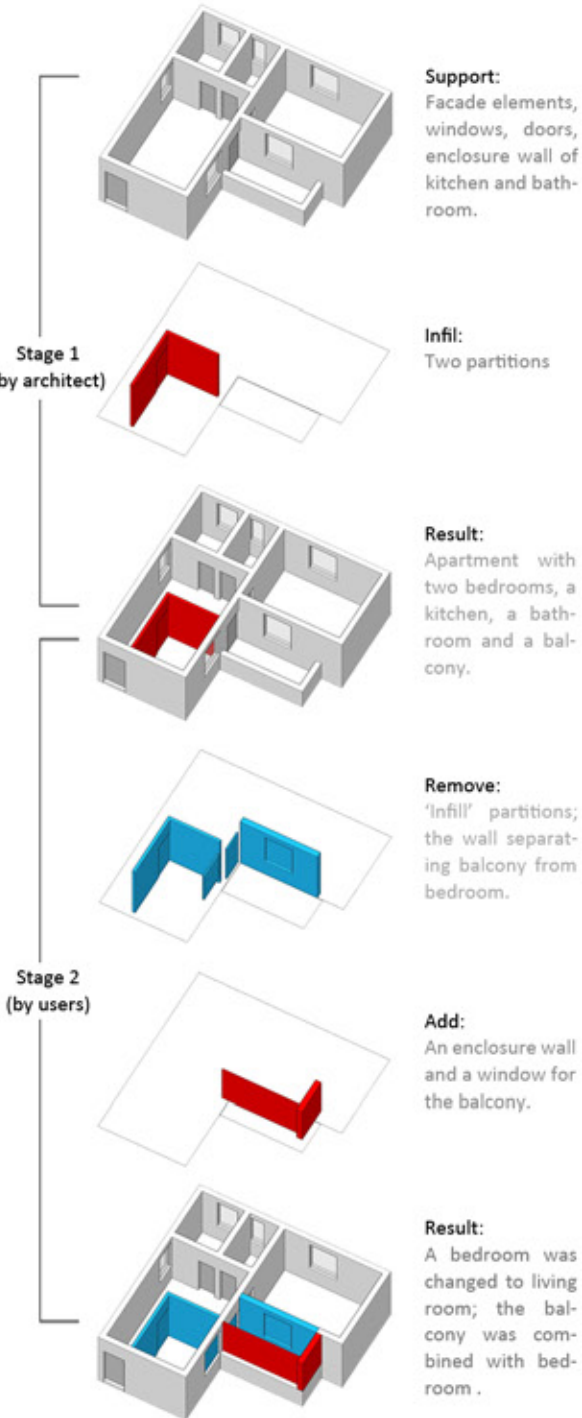


Fig. The location in building





FAMILY A2

In 1985, the householder moved in this suite with his wife. They did not make a massive renovation until 2005 when their only son left Wuxi to Shanghai. In the mean time, the apartment with large living room became increasingly popular. As a result, they changed the north-facing bedroom to a living room. And the terrace was enclosed in the same year.

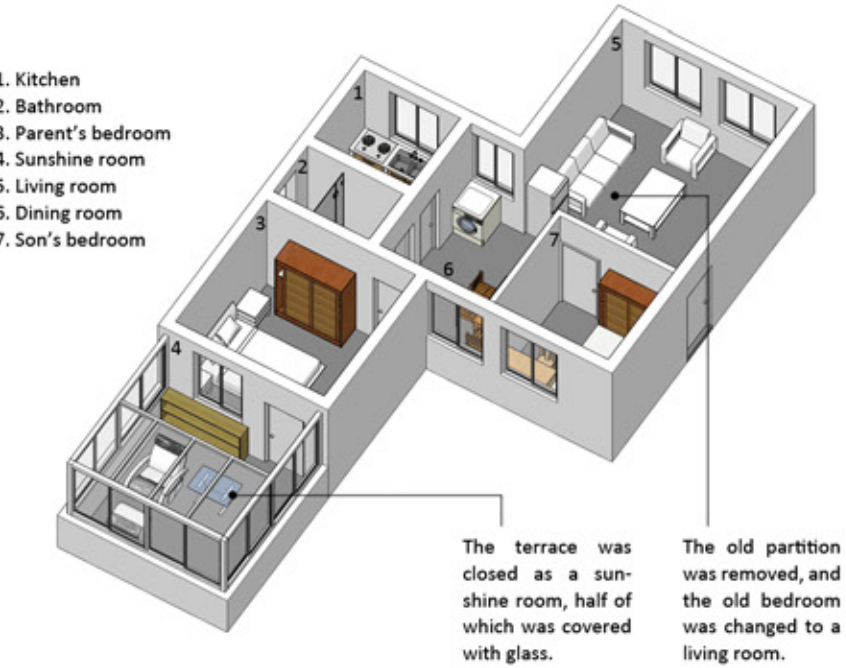
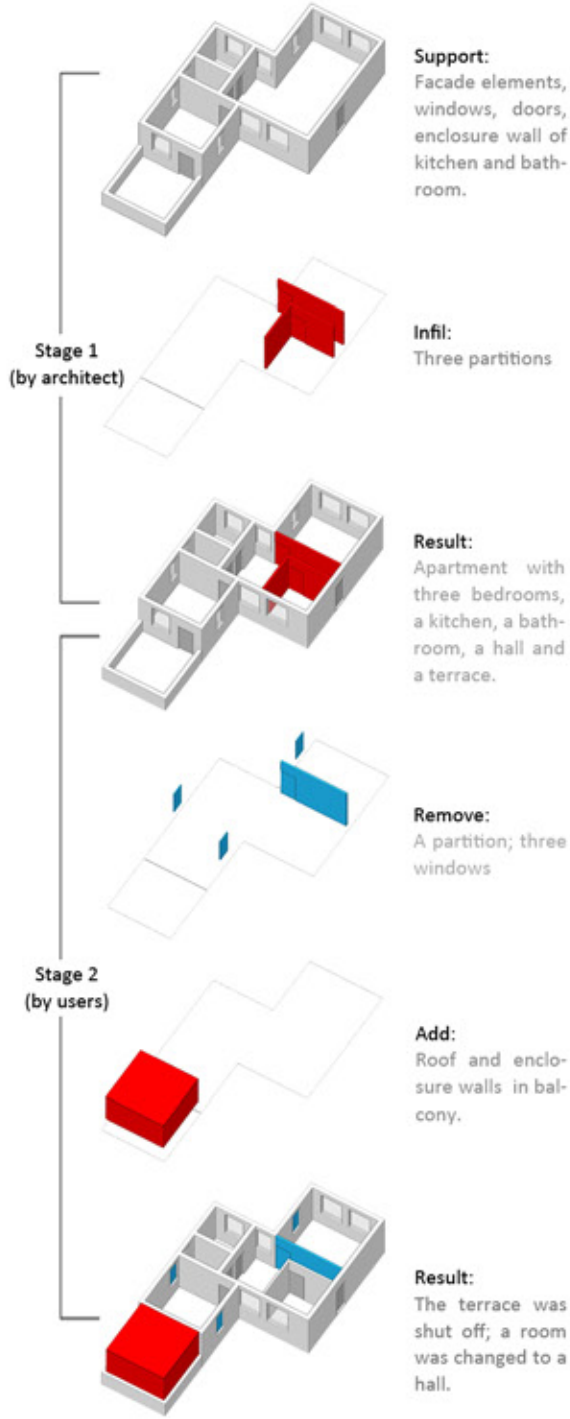


Fig. The location in community

Fig. The location in building



FAMILY A3

This is a suite for an old couple of about 70 years old. In the past thirty year, they only made some slight renovations, for example laying the floor and closing the balcony.

- 1. Main bedroom
- 2. Kitchen
- 3. Bathroom
- 4. Secondary bedroom
- 5. Dining room

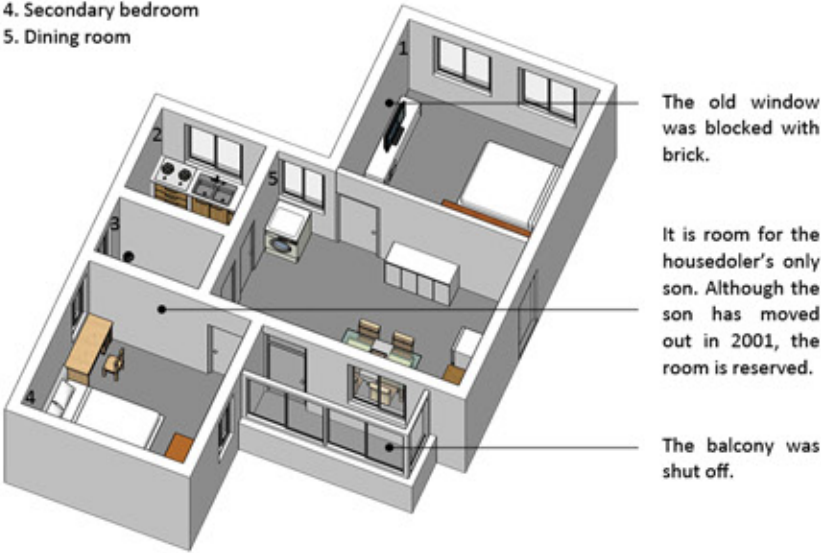
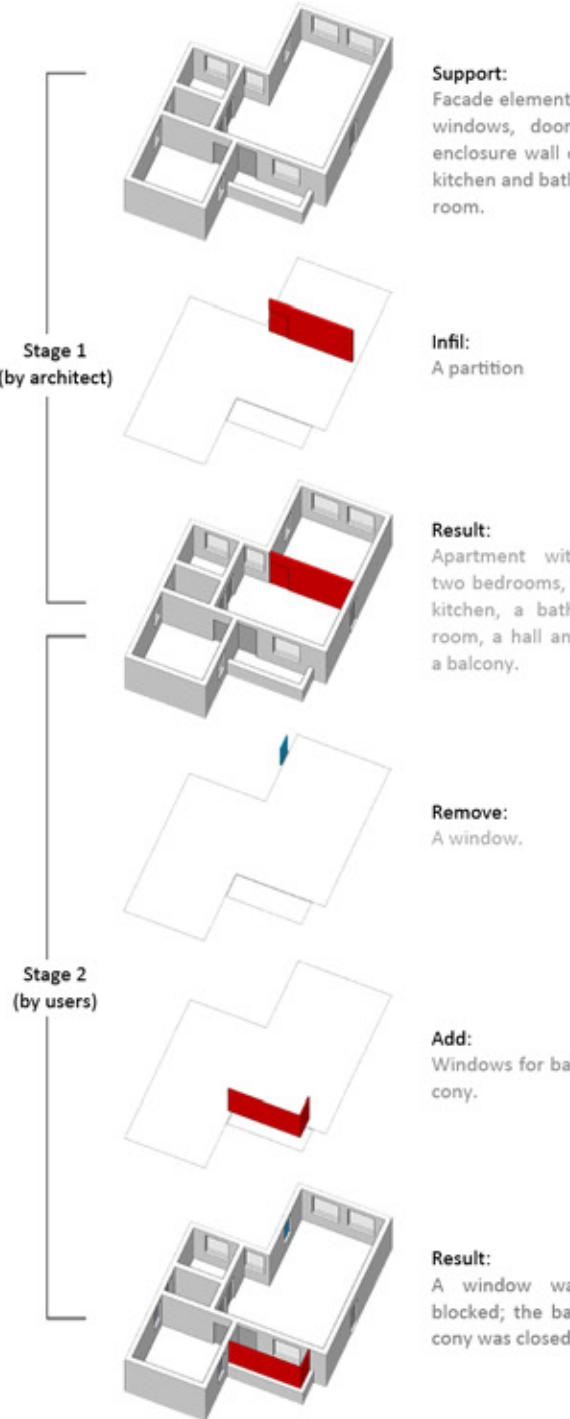


Fig. The location in community

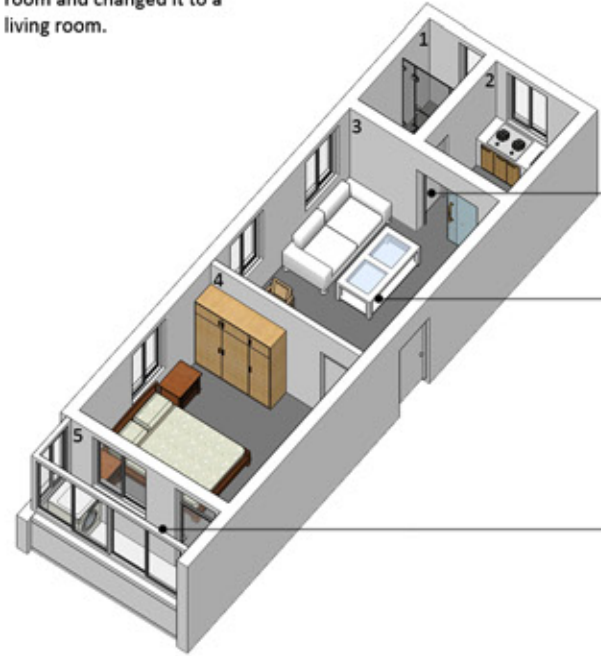
Fig. The location in building





FAMILY C5

This is a suite for a DINK family. The renovation was conducted in 2000 under the control of the householder who was about 46 years old. He removed their study room and changed it to a living room.



- 1. Bathroom
- 2. Kitchen
- 3. Living room
- 4. Bedroom
- 5. Closed balcony

The door of bathroom was moved.

The old partition was removed and the original secondary bedroom was changed to a living room.

The balcony was shut off.



Fig. Location in Community

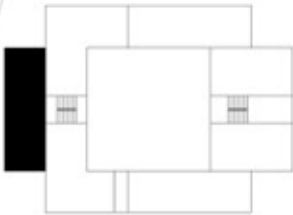
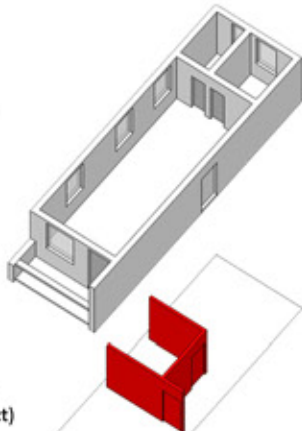


Fig. Location in Building

Stage 1  
(by architect)



**Support:**  
Facade elements, windows, doors, enclosure wall of kitchen and bathroom.

**Infil:**  
Three partitions

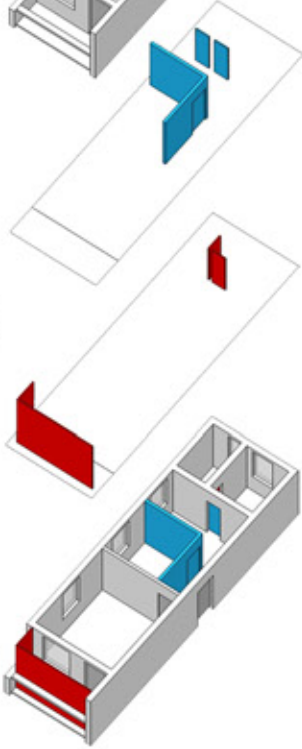
**Result:**  
Apartment with two bedrooms, a kitchen, a bathroom and a balcony.

**Remove:**  
Door of kitchen and bathroom; 'infill' partitions

**Add:**  
Doors for kitchen and bathroom; enclosure walls for balcony.

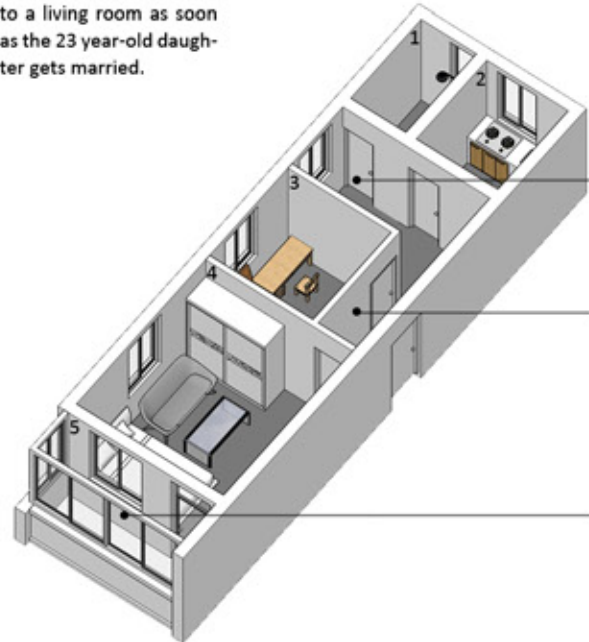
**Result:**  
Doors of kitchen and bathroom were moved; internal space was redesigned; the balcony was closed.

Stage 2  
(by users)



FAMILY C6

This is a suite for a family of three. They did not make obvious renovation in the past 30 years except enclosed the balcony. However, they plan to remove the secondary bedroom and change it to a living room as soon as the 23 year-old daughter gets married.



- 1. Bathroom
- 2. Kitchen
- 3. Daughter's room
- 4. Parent's room
- 5. Closed balcony

The door of bathroom was moved away from kitchen.

The 'infill' partition was never moved in the past 30 years.

The balcony was changed to a storage room.



Fig. Location in Community

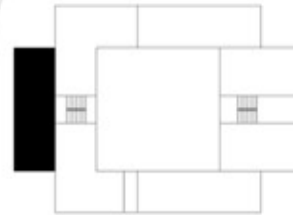
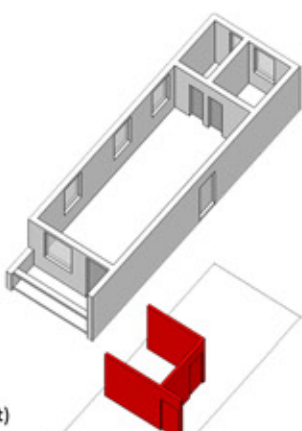


Fig. Location in Building

Stage 1  
(by architect)



**Support:**  
Facade elements, windows, doors, enclosure wall of kitchen and bathroom.

**Infil:**  
Three partitions

**Result:**  
Apartment with two bedrooms, a kitchen, a bathroom and a balcony.

**Remove:**  
The door of bathroom.

**Add:**  
A new door for bathroom, enclosure wall for balcony.

**Result:**  
The door of the kitchen was moved; the balcony was closed.

Stage 2  
(by users)

