

Figure 11.14: sTEC measurements comparison, March 25<sup>th</sup>, 2011. MAPGPS (grey), Ashtech (blue), CRS (black), NovAtel (red). Satellite DCB corrected. Elevation cutoff 45°.

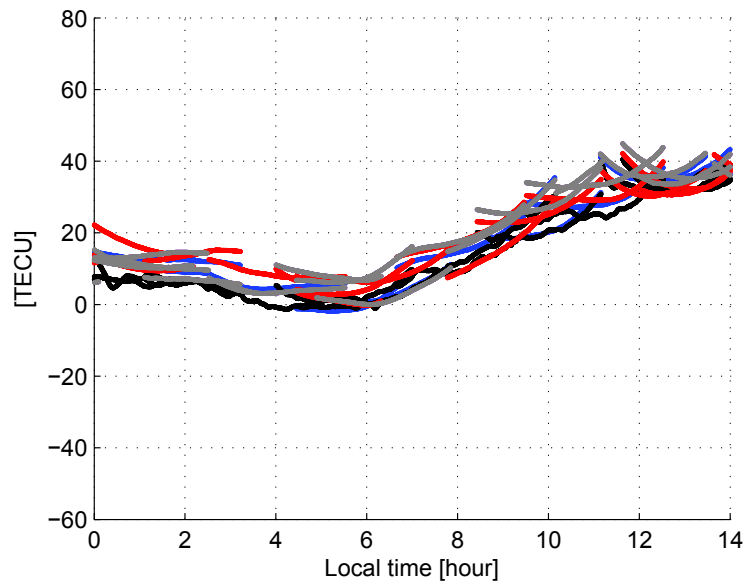


Figure 11.15: sTEC zero-normalized measurements comparison, March 25<sup>th</sup>, 2011. MAPGPS (grey), Ashtech (blue), CRS (black), NovAtel (red). Satellite DCB corrected. Elevation cutoff 45°.

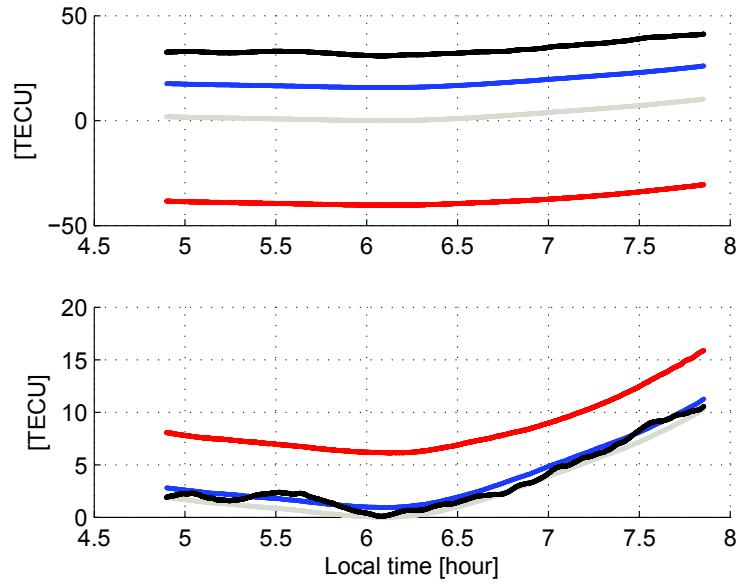


Figure 11.16: sTEC (upper plots) and sTEC zero-normalized (lower plots) measurements comparison, March 25<sup>th</sup>, 2011, PRN 10. MAPGPS (gray), Ashtech (blue), CRS (black), NovAtel (red).

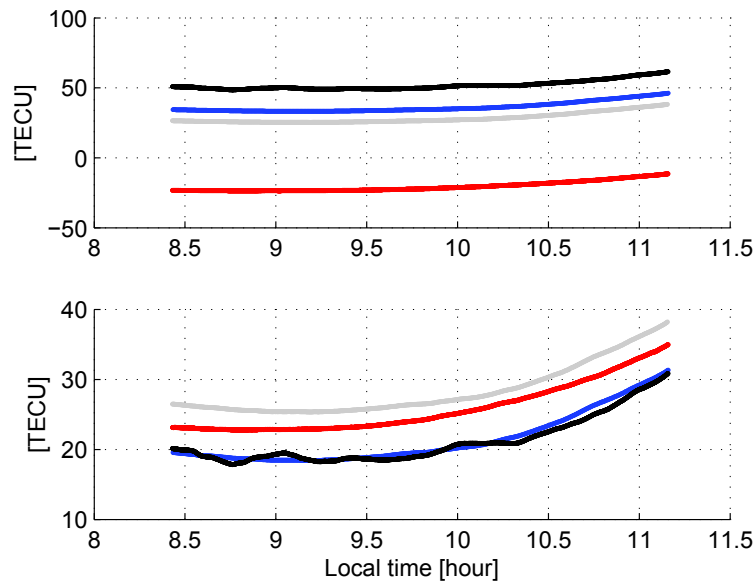


Figure 11.17: sTEC (upper plots) and sTEC zero-normalized (lower plots) measurements comparison, March 25<sup>th</sup>, 2011, PRN 26. MAPGPS (gray), Ashtech (blue), CRS (black), NovAtel (red).