

Feasibility, tailoring and properties of polyurethane/bioactive glass composite scaffolds for tissue engineering

*Original*

Feasibility, tailoring and properties of polyurethane/bioactive glass composite scaffolds for tissue engineering / Baino, Francesco; Verne', Enrica; VITALE BROVARONE, Chiara. - In: JOURNAL OF MATERIALS SCIENCE. MATERIALS IN MEDICINE. - ISSN 0957-4530. - STAMPA. - 20:(2009), pp. 2189-2195. [10.1007/s10856-009-3787-0]

*Availability:*

This version is available at: 11583/1996774 since:

*Publisher:*

Springer

*Published*

DOI:10.1007/s10856-009-3787-0

*Terms of use:*

This article is made available under terms and conditions as specified in the corresponding bibliographic description in the repository

*Publisher copyright*

(Article begins on next page)

**Feasibility, tailoring and properties of polyurethane/bioactive glass composite scaffolds for  
tissue engineering**

Francesco Baino\*, Enrica Verné, Chiara Vitale-Brovarone

This is the author post-print version of an article published on *Journal of Materials Science: Materials in Medicine*, Vol. 20, pp. 2189-2195, 2009 (ISSN 0957-4530).

The final publication is available at

[http://link.springer.com/article/10.1007%2Fs10856-009-3787-](http://link.springer.com/article/10.1007%2Fs10856-009-3787-0)

*0*This version does not contain journal formatting and may contain minor changes with respect to the published edition.

The present version is accessible on PORTO, the Open Access Repository of the Politecnico of Torino, in compliance with the publisher's copyright policy.

Copyright owner: *Springer*.

*Materials Science and Chemical Engineering Department, Politecnico di Torino, Corso Duca degli  
Abruzzi 24, 10129 Torino, Italy*

\* Corresponding author: Francesco Baino

Phone: +39 011 564 4668

Fax: +39 011 564 4699

E-mail: [francesco.baino@polito.it](mailto:francesco.baino@polito.it)

## **Abstract**

This research work aims to propose highly porous polymer/bioactive glass composites as potential scaffolds for hard-tissue and soft-tissue engineering. The scaffolds were prepared by impregnating an open-cells polyurethane sponge with melt-derived particles of a bioactive glass belonging to the  $\text{SiO}_2\text{-P}_2\text{O}_5\text{-CaO-MgO-Na}_2\text{O-K}_2\text{O}$  system (CEL2).

Both the starting materials and the composite scaffolds were investigated from a morphological and structural viewpoint by X-ray diffraction analysis and scanning electron microscopy. Tensile mechanical tests, carried out according to international ISO and ASTM standards, were performed by using properly tailored specimens.

*In vitro* tests by soaking the scaffolds in simulated body fluid (SBF) were also carried out to assess the bioactivity of the porous composites. It was found that the composite scaffolds were highly bioactive as after 7 days of soaking in SBF a HA layer grew on their surface.

The obtained polyurethane/CEL2 composite scaffolds are promising candidates for tissue engineering applications.

*Keywords:* Scaffold; Composites; Mechanical properties; Bioactivity; Tissue engineering.

## 1. Introduction

Tissue engineering represents a promising approach to repair and regenerate a wide variety of damaged human tissues, avoiding the problems involved in transplantation [1]. Autografts have been commonly considered the “gold standard” in bone reconstructive surgery, but their availability is limited and harvesting the patient’s own tissue can cause death of healthy tissue at the donor site. Allografts are in larger supply but carry the risks of pathologic transmission. The use of man-made alloplastic materials overcomes the drawbacks related to autografts and allografts and, in addition, avoids the need for a permanent implant.

Different natural and synthetic materials have been widely investigated to produce tissue engineering scaffolds, *i.e.* usually porous implants acting as 3-D templates for cells adhesion, growth and proliferation.

Biocompatible polymers, such as degradable polylactide, polyglycolide and their co-polymers, are the most promising candidates for soft-tissue engineering applications [2-3].

As regards hard-tissue engineering, bioceramics have been proposed as bone graft materials for many decades and they have a range of applications including bone defects filling, fracture fixation, trauma and tumours treatment, maxillofacial and spinal surgery [4-8]. Hydroxyapatite (HA) has been traditionally used for hard-tissue repair because of its chemical and crystallographic similarity to the carbonated apatite in human teeth and bone [9]. Calcium phosphate salts have usually been adopted as fillers for small bone cavities in orthopaedics and in restorative dentistry [10-11]. Bioactive glasses (BGs) and glass-ceramics (BGCs), basically composed of  $\text{SiO}_2$ ,  $\text{P}_2\text{O}_5$ ,  $\text{Na}_2\text{O}$  and  $\text{CaO}$ , have been investigated due to their highly bioactive behaviour [12-14]. Above the traditional silica-based BGs, phosphate-based scaffolds, able to resorb at the same time as the bone is repaired, have been recently proposed [15-16].

In previous years, polymer/ceramic (glass) porous composites have attracted increasing interest as scaffolds for bone tissue engineering. Specifically, two classes of composite scaffolds have been

fabricated and investigated: (i) polymer-based scaffolds coated with ceramic (glass) particles and (ii) polymer-coated ceramic (glass) scaffolds.

As examples of the type (i), PLGA/amorphous CaP, PLLA/hydroxyapatite and PLGA/Bioglass<sup>®</sup> composite scaffolds have been proposed for bone regeneration [17-19]. The ceramic (glass) particles were added to the polymer to enhance scaffold bioactivity, aiming to induce implant mineralization/osteointegration.

In the case (ii), the polymer was introduced to strengthen the ceramic (glass) scaffold structure: the polymer layer acted as a glue, holding the glass particles together as the struts start to fail [20].

Polymer/ceramic (glass) scaffolds have been mainly proposed for hard-tissue engineering but some studies, involving the use of such scaffolds for soft-tissue regeneration, have been also carried out. For instance, PDLLA/Bioglass<sup>®</sup> composite scaffolds have been investigated for lung tissue engineering [21].

Concerning the composite scaffolds fabricated by using a polymer and, specifically, bioactive glass particles, in the authors' knowledge a wide range of polymers has been tested but only Bioglass<sup>®</sup> powders [22] have been adopted as inorganic phase. This research work pursued the aim to fabricate polyurethane-based composite scaffolds coated with melt-derived particles of a bioactive glass (CEL2) different from Bioglass<sup>®</sup>. The prepared scaffolds were characterized in terms of structure, morphology and *in vitro* bioactivity. In addition, mechanical tests were carried out on “dumbbell-shaped” specimens apt for tensile strength tests according to international standards. In fact, specific ASTM and ISO standards [23-24] are recommended for tensile tests on biomaterials [25], but at present only one study was carried out to assess the tensile strength of polymer/glass composite scaffolds [26], due to the difficulties occurring in the shaping of specimens.

## **2. Materials and methods**

### *2.1. Starting materials*

The polymeric skeleton of the composite scaffolds was a commercial polyurethane (PU) open-cell sponge (density  $\sim 20 \text{ kg}\cdot\text{m}^{-3}$ ) characterized by a 3-D network of macropores.

The glass particles necessary for polymer coating were produced by a traditional melting/quenching route. Briefly, the silica-based glass (CEL2; molar composition: 45%  $\text{SiO}_2$ , 3%  $\text{P}_2\text{O}_5$ , 26%  $\text{CaO}$ , 7%  $\text{MgO}$ , 15%  $\text{Na}_2\text{O}$ , 4%  $\text{K}_2\text{O}$  [27]) was synthesized by melting the reagents, *i.e.*  $\text{SiO}_2$ ,  $\text{Ca}_3(\text{PO}_4)_2$ ,  $\text{CaCO}_3$ ,  $(\text{MgCO}_3)_4\cdot\text{Mg}(\text{OH})_2\cdot 5\text{H}_2\text{O}$ ,  $\text{Na}_2\text{CO}_3$  and  $\text{K}_2\text{CO}_3$ , in a platinum crucible in air at  $1400 \text{ }^\circ\text{C}$  for 1 h (heating rate:  $5 \text{ }^\circ\text{C}\cdot\text{min}^{-1}$ ) to ensure homogeneity and by then quenching the melt in cold water. The so-obtained “frit” was ground by ball milling and carefully sieved to obtain particles with diameter below  $32 \text{ }\mu\text{m}$ . The steps involved in glass synthesis are resumed in figure 1.

The glass powders were analyzed by means of wide-angle ( $2\theta$  within  $10\text{-}60^\circ$ ) X-ray diffraction (XRD) by using a X'Pert Philips diffractometer (Cu anode with  $\text{K}\alpha$  radiation, incident wavelength  $\lambda = 1.5405 \text{ \AA}$ , Bragg-Brentano geometry) operating at 40 kV and 30 mA, with a step size  $\Delta(2\theta) = 0.02^\circ$  and a fixed counting time of 1 s per step.

Scanning electron microscopy (SEM, Philips 525 M operating at 15 kV) was carried out on both the CEL2 particles and the PU sponge.

## 2.2. Scaffolds fabrication

The PU sponge was carefully shaped to obtain two kinds of samples: (i)  $15.0 \times 15.0 \times 15.0 \text{ mm}^3$  cubic blocks and (ii) “dumbbell-shaped” specimens necessary for mechanical tests. The so-tailored bare polymer underwent a process of infiltration by dipping in a water-based CEL2 slurry to finally obtain PU/CEL2 composite scaffolds. The weight ratio of slurry components was set as follows: 30% CEL2, 6% polyvinyl alcohol (PVA), 64% water. PVA was used as binding agent so that the glass particles adhere to the surfaces of the polymer. After PVA hydrolysis at  $60 \text{ }^\circ\text{C}$  for 1 h under magnetic continuous stirring, CEL2 powders were added to the solution. After slurry mixing at

room temperature (RT) for 0.5 h, the bare PU samples were soaked for 30 s in the slurry which infiltrates the polymer structure; the samples were then extracted and the exceeding slurry was removed by pressing (20 kPa for 1 s). The process was repeated for 4 times to obtain a continuous and homogeneous glass coating on the polymeric structure; finally, the resulting composite scaffolds were dried at room temperature on glass plates.

The stages necessary for composite scaffolds fabrication are resumed in figure 2.

### 2.3. Scaffolds characterization

The PU/CEL2 composite scaffolds were investigated by SEM in order to evaluate the results of the fabrication process.

The porous content of the bare sponge and of the composite scaffolds was easily assessed from the mass and dimensions of the samples. Specifically, the composite scaffolds were weighted before and after the glass infiltration process; the porosity  $P$  (%vol.), *i.e.* the void space in the scaffold volume, was finally calculated as [28]:

$$P = \left(1 - \frac{\rho_s}{\rho_0}\right) \cdot 100,$$

where  $\rho_s$  is the apparent density of the scaffold and  $\rho_0$  is the density of the material of which the scaffold is fabricated. Named  $m_p$  the mass of the bare polymer,  $m_g$  the mass of the infiltrated glass,  $\phi_p$  the mass fraction of PU,  $\phi_g$  the mass fraction of glass and  $V$  the scaffold volume, the apparent density of the composite scaffold can be calculated as  $\rho_s = \phi_p \frac{m_p}{V} + \phi_g \frac{m_g}{V}$ . The density of non-porous material was determined as  $\rho_0 = \phi_p \rho_p + \phi_g \rho_g$ , where  $\rho_p$  and  $\rho_g$  are the densities of PU and CEL2, respectively.

The “dumbbell-shaped” scaffolds underwent tensile strength tests, that were performed by using a MTS System Corp. apparatus (cross-head speed set at 10 mm·min<sup>-1</sup>). The failure tensile stress  $\sigma_t$  (MPa) was obtained as

$$\sigma_t = \frac{F_b}{S},$$

where  $F_b$  (N) is the tensile load at break and  $S$  (mm<sup>2</sup>) is the resistant cross-section perpendicular to the load axis.

The Young’s modulus  $E$  (MPa) was calculated from the Hookean region of the stress-strain plot.

The energy absorbed per unit volume  $W_{0 \rightarrow \varepsilon^*}$  (J·cm<sup>-3</sup>) by the scaffold was defined as the energy necessary to deform a specimen from the unloaded condition ( $\sigma = 0$ ,  $\varepsilon = 0$ ) to a strain  $\varepsilon^*$  (breaking off) and was calculated as the area under the stress-strain curve up to  $\varepsilon^*$  [29]:

$$W_{0 \rightarrow \varepsilon^*} = \int_0^{\varepsilon^*} \sigma(\varepsilon) d\varepsilon.$$

*In vitro* bioactivity was investigated by soaking 15.0 × 15.0 × 15.0 mm<sup>3</sup> composite scaffolds for 7 days in 30 ml of acellular simulated body fluid (SBF) maintained at controlled temperature (37 °C), as described by Kokubo’s protocol [30]. The solution was replaced twice a week to approximately simulate fluid circulation in the human body. The samples were analyzed by SEM and EDS (EDAX Philips 9100) analysis to assess the precipitation of apatite-like phases.

### 3. Results and discussion

#### 3.1. Morphological and structural investigations

The morphology of CEL2 particles used to coat the PU sponge is non-spherical, irregular and angular, as shown in figure 3. In addition, a bimodal distribution of particles size can be observed:

(i) particles ranging within 20-30  $\mu\text{m}$  and (ii) particles with size below 10  $\mu\text{m}$ .



The glassy nature of CEL2 particles was demonstrated by XRD investigations, as the broad halo depicted in figure 4 reveals that the material was completely amorphous.

Low-magnification SEM observations confirmed that the bare PU sponge exhibited a 3-D network of highly interconnected macropores ranging within 200-800  $\mu\text{m}$ , as shown in figure 5. After polymer impregnation, a continuous and uniform CEL2 particles coating was successfully obtained on sponge trabeculae (figure 6). Some clotted pores are visible, but, in general, the pores remain – at least partially – open and interconnected.

The sponge-impregnation method used for the fabrication of the composite scaffolds involves a remarkable potential for reconstructive surgery due to two reasons: (i) grafts of various size and shape can be easily tailored to each single patient and (ii) the problem of controlling the volumetric shrinkage which occurs in ceramic (glass) scaffolds is successfully overcome.

The porous content of PU/CEL2 scaffolds is close to that of the bare sponge (table 1), demonstrating that the glass coating does not significantly reduce the pores size, as already shown by SEM observations (figure 6).

### *3.2. Mechanical characterization*

Figure 7a shows a “dumbbell-shaped” scaffold used for tensile strength tests; two examples of tensile stress-strain curves (bare polymer and composite) are depicted in figure 7b.

For both samples, the plots show an initial Hookean region (positive slope) in which stress increases in proportion to strain (elastic behaviour), followed by plastic behaviour (a plateau region is evident in (2)) and, finally, by a failure region ending with the specimen breaking off.

The mechanical properties inferred from the stress-strain curves are resumed in table 2. A low standard deviation was assessed for these data, thus confirming that a good reproducibility of the specimens was achieved.

No statistically significant differences in terms of failure strength can be observed between bare sponge and composite scaffold.

The elastic modulus of the porous composites is one order of magnitude higher than bare sponge because, as expected, the glass coating increases the scaffold stiffness. In addition, the composite scaffolds showed limited energy absorption until failure in comparison with the bare polymer.

With regard to scaffolds mechanical properties, polymer/ceramic (glass) composite scaffolds have been proposed by many authors for hard-tissue substitution [17-20,27,31], but it should be noticed that the elastic stiffness and the mechanical strength of today's available polymer/ceramic (glass) composite scaffolds, including those prepared in the present work, are inadequate if compared to the tissues they should temporarily replace. This drawback is particularly evident for implants devoted to bone substitution because polymer/glass porous composites are at least one order of magnitude weaker than natural cancellous bone [32], and they could successfully replace bone portions only after careful optimizations to reach a significant improvement of the mechanical properties. Although the composite scaffolds prepared in this research work exhibit not satisfactory mechanical features and, therefore, their potential use at present may be limited by such drawback, however they are interesting for tissue regeneration applications thanks to (i) the easiness of samples shaping according to the patient's need and (ii) their excellent bioactivity, as demonstrated in the section 3.3. Applications for bone substitution can be suggested, as proposed by other authors for Bioglass<sup>®</sup>-coated polymeric scaffolds [20,33]. It should be noticed that, in this case, the replacement of strictly non-bearing bone portions is recommended.

### *3.3. In vitro bioactivity assessment*

Figure 8a shows that globe-shaped agglomerates, resembling the typical “cauliflower morphology” of hydroxyapatite (HA), are well distinguishable on scaffold surface after 7 days of soaking in SBF. The glass particles lie underneath the newly formed layer. EDS analysis, reported in figure 8b,

confirms that the newly formed phase is HA, because it exhibits a Ca/P molar ratio ( $\sim 1.66$ ) which closely approaches the natural HA stoichiometric value ( $\text{Ca/P} = 1.67$ ). The presence of a weak peak for silicon (Si) can be attributed to the underlying silica-rich gel layer, due to the bioactive process as described by Hench [34]. The peak of silver (Ag) is due to the metal coating necessary for analysis.

The sponge polymer (polyurethane) is biocompatible [35] and, as expected, does not affect the bioactivity of CEL2 particles. The *in vitro* behaviour of the composite scaffolds is similar to that shown by the only CEL2 [27], because the formation of a HA layer in both cases.

The pH variations induced by the scaffold soaked in SBF are quite moderate ( $\text{pH} = 8.20$  after soaking for 24 h and  $\text{pH} = 7.80$  after soaking for 7 days were registered, with respect to  $\text{pH} = 7.40$  of the as-prepared SBF), thus no cytotoxic effect is foreseen after *in vivo* implantation.

#### **4. Conclusions**

In this research work 3-D foam-like polyurethane/bioactive glass composite scaffolds were produced by the sponge-impregnation technique. Specifically, macroporous polyurethane-based scaffolds coated with a continuous and homogeneous CEL2 layer were successfully obtained. The scaffolds were tailored in form of “dumbbell-shaped” specimens apt to carry out tensile strength tests according to ASTM and ISO standards; in this sense, the present work is a preliminary study about tensile behaviour of potential composite substitutes for tissue engineering.

The mechanical properties of the obtained porous composites were comparable to those of today's available similar scaffolds proposed for hard-tissue and soft-tissue engineering. In addition, the prepared scaffolds showed an excellent bioactive behaviour. In fact, the *in vitro* studies showed that the CEL2 coating imparted high bioactivity to the scaffolds by promoting the formation of a hydroxyapatite layer on their surface.

Therefore, the prepared scaffolds are interesting candidates for tissue engineering applications due to their easiness of fabrication and bioactive properties.

### **Acknowledgements**

The authors gratefully acknowledge the financial support of Regione Piemonte (Ricerca Sanitaria Finalizzata) supplied for this work.

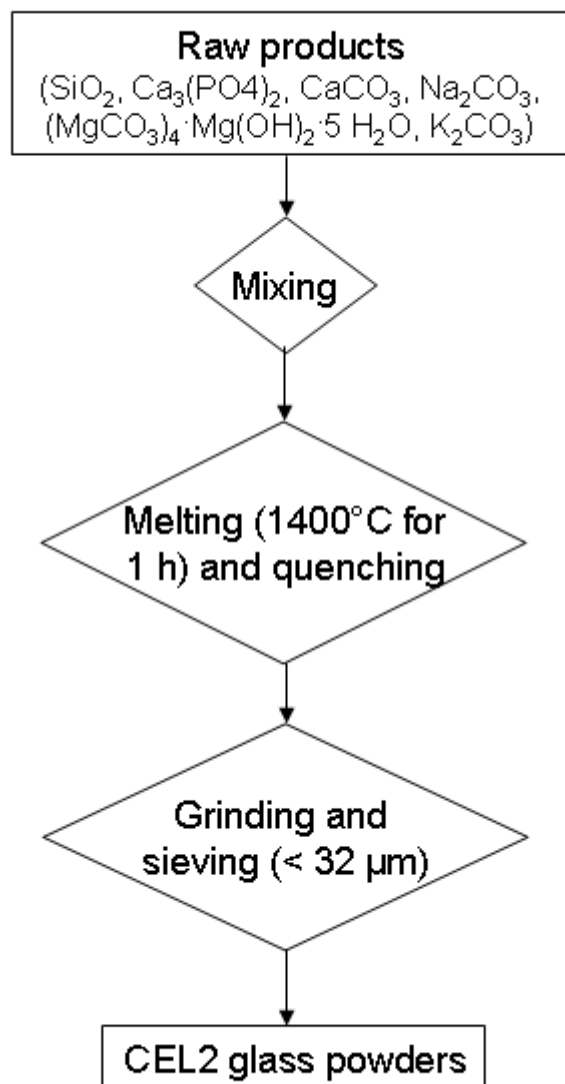
## References

- [1] W. Schlickewei, S. Schlickewei, *Macromol. Symp.* 253, 10 (2007)
- [2] L. Wu, J. Ding, *Biomaterials* 25, 5821 (2004)
- [3] A.S.P. Lin, T.H. Barrows, S.H. Cartmell, R.E. Guldberg, *Biomaterials* 24, 481 (2003)
- [4] D. Wolff, V.M. Goldberg, S. Stevenson, *J. Orthop. Res.* 12, 439 (1994)
- [5] E. Kon et al., *J. Biomed. Mater. Res.* 49, 328 (2000)
- [6] D.C. Fredericks et al., *Key Eng. Mater.* 218-220, 409 (2002)
- [7] C.E. Wilson al., *Biomaterials* 27, 302 (2002)
- [8] M. Marcacci et al., *Tissue Eng.* 13, 947 (2007)
- [9] N. Ozawa, S. Negami, T. Odaka, T. Morii, T. Koshino, *J. Mater. Sci. Lett.* 8, 869 (1989)
- [10] R.Z. LeGeros, *Clin. Mater.* 14, 65 (1993)
- [11] R.Z. LeGeros, S. Lin, R. Rohanizadeh, D. Mijares, J.P. LeGeros, *J. Mater. Sci.: Mater. Med.* 14, 201 (2003)
- [12] L.L. Hench, *J. Biomed. Mater. Res.* 41, 511 (1998)
- [13] L.L. Hench, *Biomaterials* 19, 1419 (1998)
- [14] J.R. Jones, L.M. Ehrenfried, L.L. Hench, *Biomaterials* 27, 964 (2006)
- [15] J.C. Knowles, *J. Mater. Chem.* 13, 2395 (2003)
- [16] E.A. Abou, J.C. Knowles, *J. Mater. Sci.: Mater. Med.* 19, 377 (2008)
- [17] Y.M. Khan, D.S. Dhirendra, S. Katti, C.T. Laurencin, *J. Biomed. Mater. Res. A* 69(A), 728 (2004)
- [18] R.Y. Zhang, P.X. Ma, *J. Biomed. Mater. Res.* 44, 446 (1999)
- [19] A.G. Stamboulis, A.R. Boccaccini, L.L. Hench, *J. Mater. Sci.: Mater. Med.* 4, 843 (2002)
- [20] O. Bretcanu, Q. Chen, S.K. Misra, A.R. Boccaccini, I. Roy, E. Verné, C. Vitale-Brovarone, *Glass Technol.: Eur. J. Glass Sci. Technol. A* 48, 227 (2007)
- [21] S. Verrier, J.J. Blaker, V. Maquet, L.L. Hench, A.R. Boccaccini, *Biomaterials* 25, 3013 (2004)

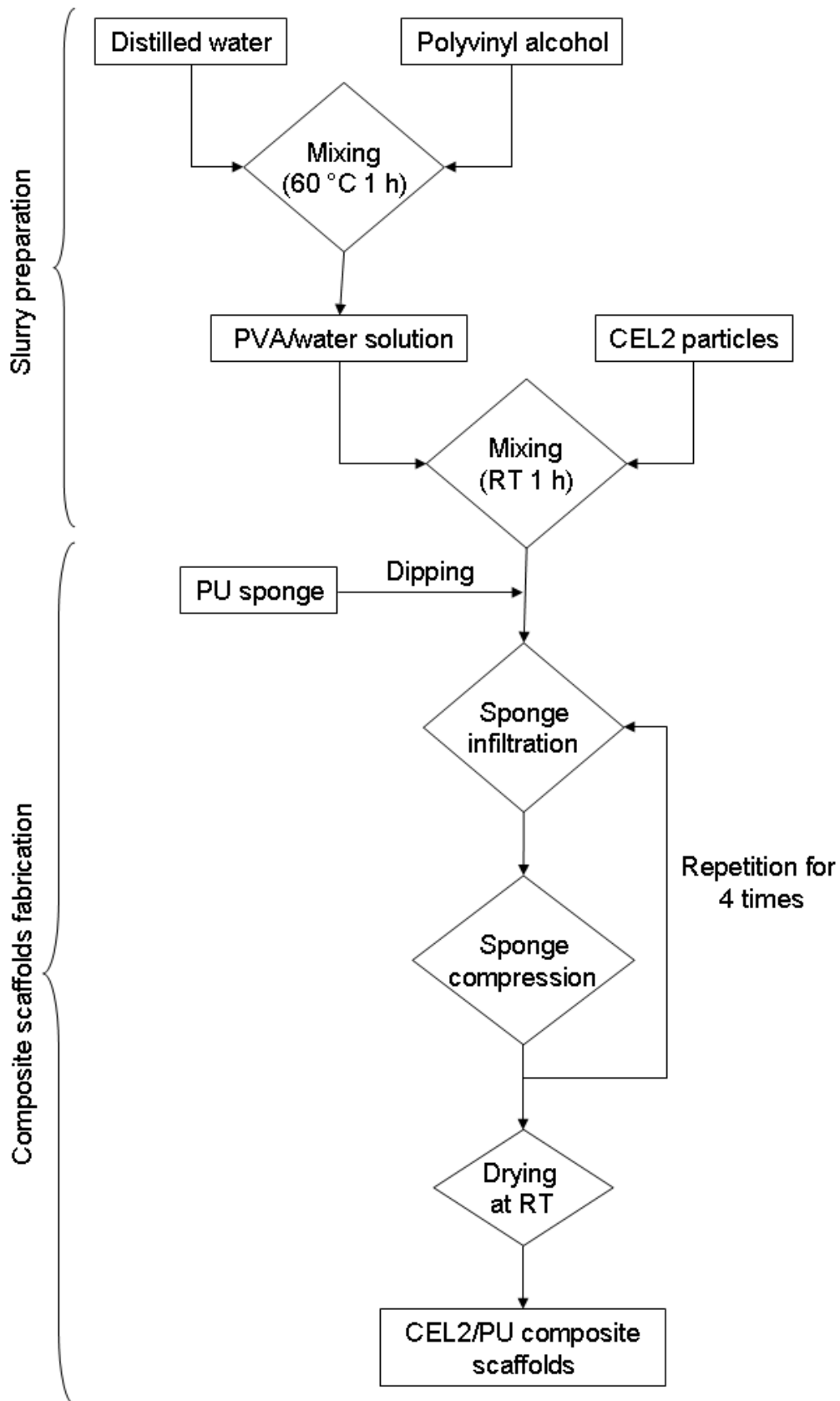
- [22] L.L. Hench, *J. Mater. Sci.: Mater. Med.* 17, 967 (2006)
- [23] ASTM D638-08. Standard Test Method for Tensile Properties of Plastics.
- [24] ISO 527-1:1993 standard. Plastics – Determination of tensile properties.
- [25] ASTM F2150-07. Standard Guide for Characterization and Testing of Biomaterial Scaffolds Used in Tissue-Engineered Medical Products.
- [26] K. Zhang, Y. Wang, M.A. Hillmayer, L.F. Francis, *Biomaterials* 25, 2489 (2004)
- [27] C. Vitale-Brovarone, E. Verné, L. Robiglio, G. Martinasso, R.A. Canuto, G. Muzio, *J. Mater. Sci.: Mater. Med.* 19, 471 (2008)
- [28] V. Karageorgiou, D. Kaplan, *Biomaterials* 26, 5474 (2005)
- [29] P. Kenesei, Cs. Kadar, Zs. Rajkovits, J. Lendvai, *Script. Mater.* 50, 295 (2004)
- [30] T. Kokubo, H. Takadama, *Biomaterials* 27, 2907 (2006)
- [31] K. Rezwan, Q.Z. Chen, J.J. Blaker, A.R. Boccaccini, *Biomaterials* 27, 3413 (2006)
- [32] J. Jones, L.L. Hench, *Curr. Opin. Solid State Mater. Sci.* 7, 301 (2003)
- [33] M. Bil, J. Ryszkowska, J.A. Roether, O. Bretcanu, A.R. Boccaccini, *Biomed. Mater.* 2, 93 (2007)
- [34] L.L. Hench, *J. Biomed. Mater. Res.* 41, 511 (1998)
- [35] G. Ciardelli et al., *Polym. Adv. Technol.* 17, 786 (2006)

**Figure**

**Fig. 1** Flow-chart of glass synthesis

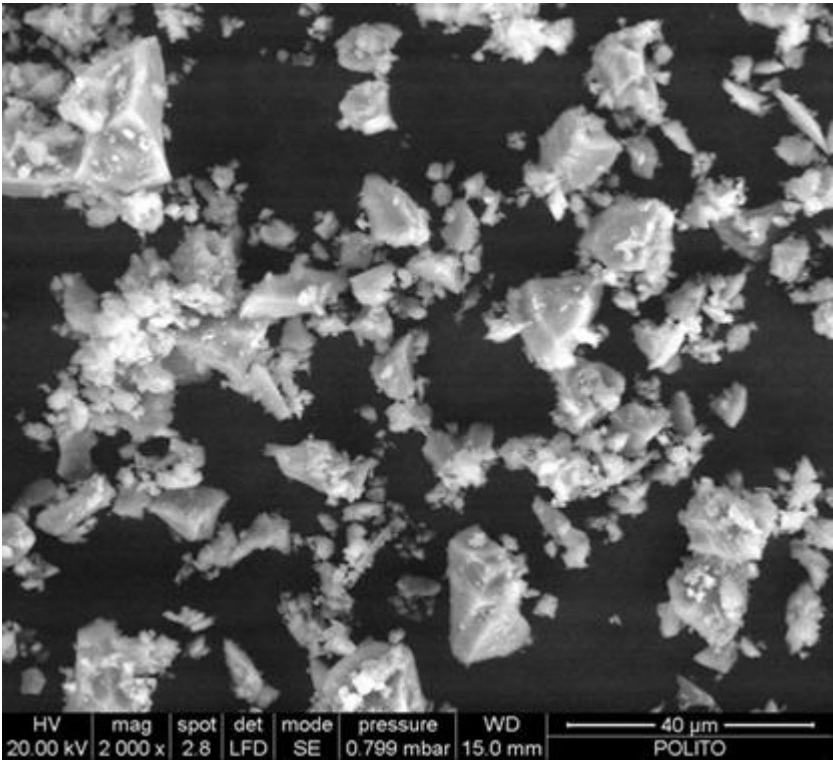


**Fig. 2** Flow-chart of sponge-impregnation method for fabrication of composite scaffolds

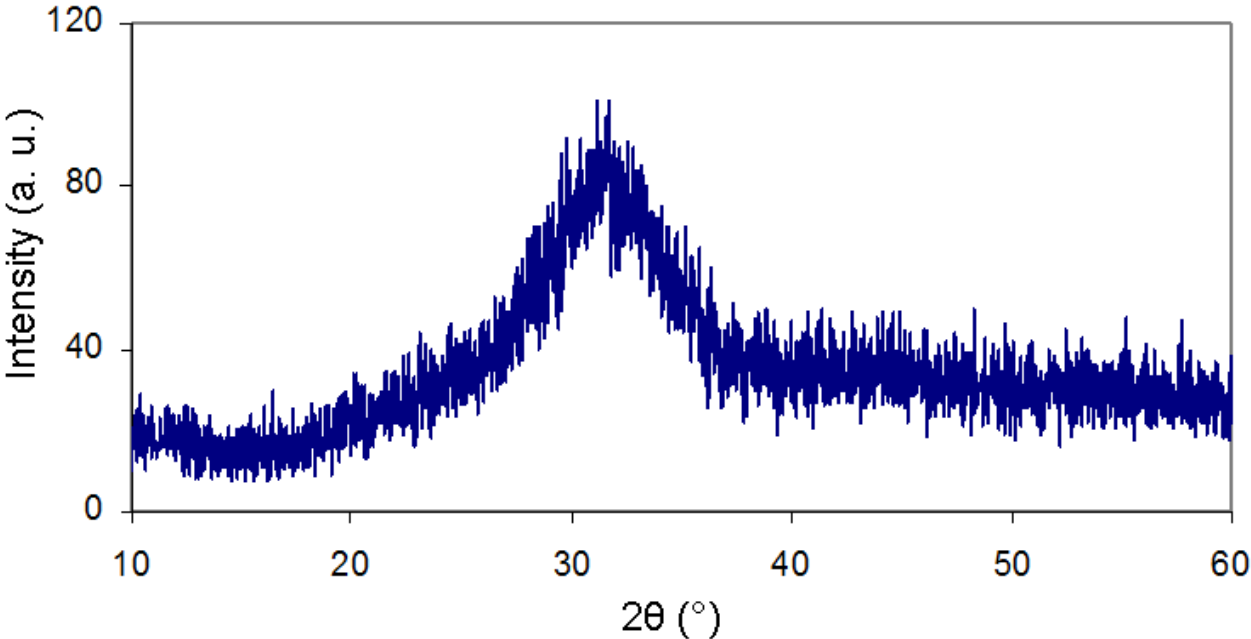




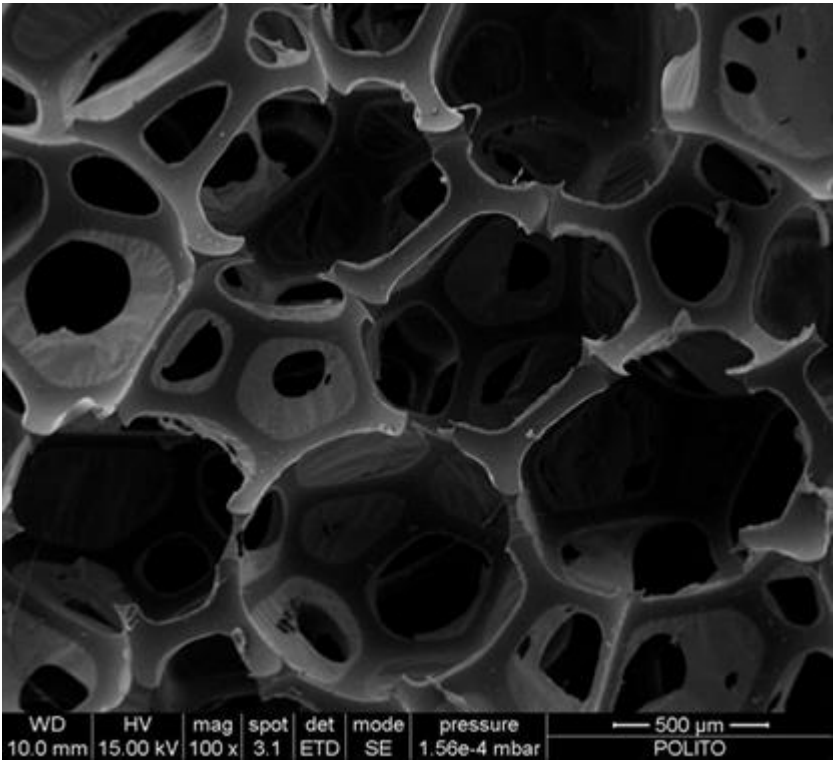
**Fig. 3** Low-magnification SEM micrograph of glass particles used for PU sponge coating



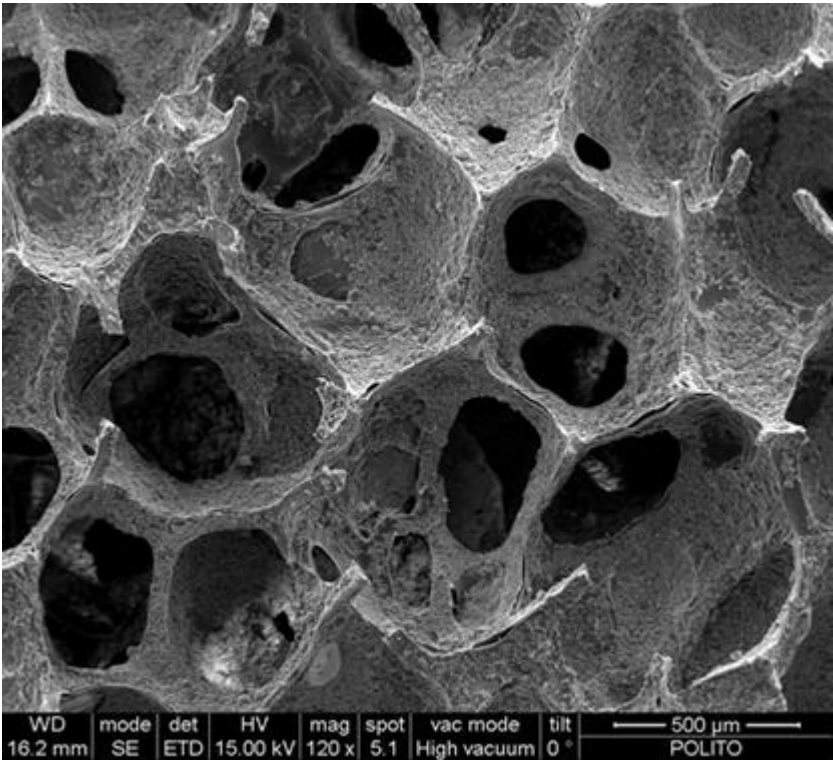
**Fig. 4** XRD pattern of CEL2 particles



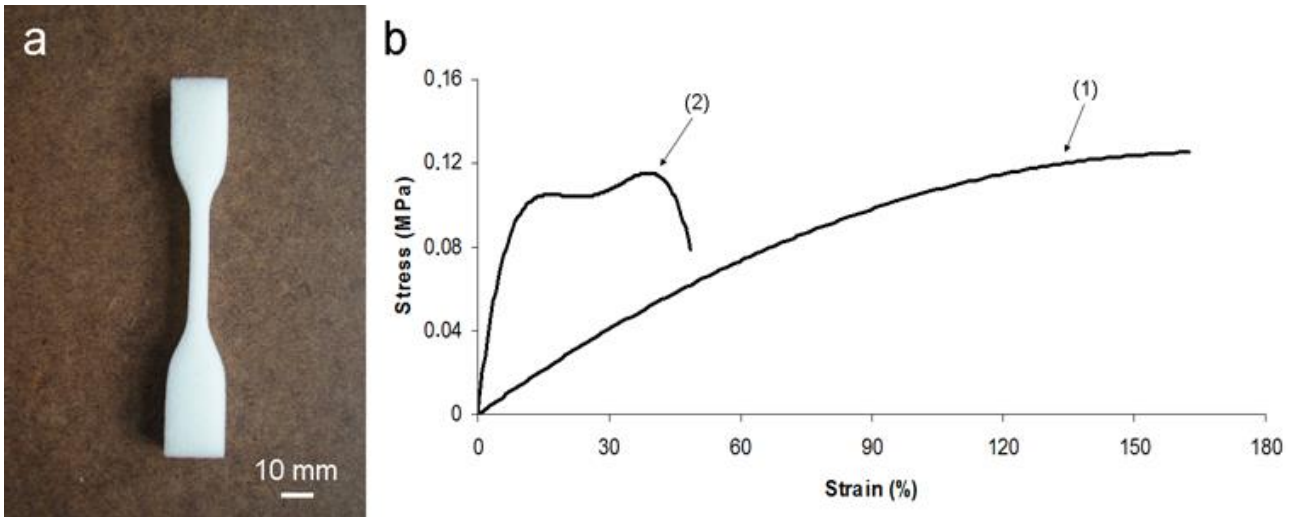
**Fig. 5** Structure of the bare polyurethane sponge



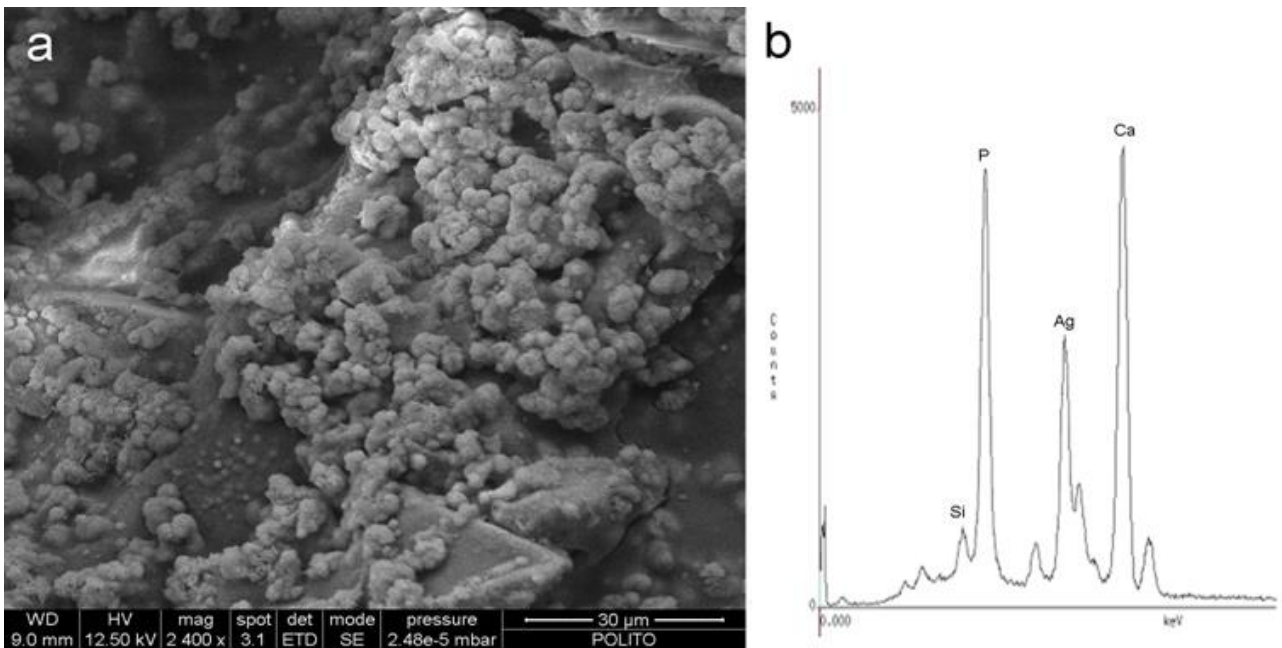
**Fig. 6** Morphology of the composite scaffold



**Fig. 7** Tensile strength tests: (a) “dumbbell-shaped” bare sponge specimen; (b) typical stress-strain curves of (1) bare sponge and (2) composite scaffold.



**Fig. 8** *In vitro* bioactivity tests: (a) scaffold surface after 7 days of soaking in SBF and (b) corresponding EDS pattern.



## Tables

**Table 1** Samples porosity assessed via density measurements <sup>a</sup>

Sample	$P$ (%vol.)
Bare sponge	$95.0 \pm 4.0$
Composite scaffold	$87.0 \pm 8.0$

<sup>a</sup> 5 samples tested for each type

**Table 2** Mechanical properties of the scaffolds <sup>b</sup>

Sample	$E$ (MPa)	$\sigma_t$ (MPa)	$W_{0 \rightarrow \varepsilon^*}$ ( $\text{J} \cdot \text{cm}^{-3}$ )
Bare sponge	$0.12 \pm 0.020$	$0.12 \pm 0.010$	$146.0 \pm 25.0$
Composite scaffold	$1.35 \pm 0.050$	$0.10 \pm 0.020$	$36.6 \pm 10.0$

<sup>b</sup> 5 samples tested for each type