

OFF-SITE MANUFACTURING FOR A NEW MODULAR WOODEN ARCHITECTURE MADE IN ITALY

Original

OFF-SITE MANUFACTURING FOR A NEW MODULAR WOODEN ARCHITECTURE MADE IN ITALY / Angeli, Albino; Bono, Jacopo; Callegari, Guido; Francescotti, Adriano; Lo Turco, Massimiliano; Menapace, Stefano; Procel, Jean Carlos Lapo; Rossi, Andrea; Rossi, Benedetta; Simeone, Paolo; Tomalini, Andrea. - ELETTRONICO. - (2025), pp. 2436-2443. (14th World Conference on Timber Engineering 2025 (WCTE 2025) Brisbane (Australia) 22-26 June 2025) [10.52202/080513-0297].

Availability:

This version is available at: 11583/3001391 since: 2025-06-30T16:57:45Z

Publisher:

Curran Associates

Published

DOI:10.52202/080513-0297

Terms of use:

This article is made available under terms and conditions as specified in the corresponding bibliographic description in the repository

Publisher copyright

(Article begins on next page)



WORLD CONFERENCE ON TIMBER ENGINEERING 2025

BRISBANE, AUSTRALIA

Advancing Timber for the Future Built Environment



Proceedings

from the 14th World Conference
on Timber Engineering

June 22 – June 26, 2025



World Conference on Timber Engineering 2025

Advancing Timber for the Future Built Environment

Brisbane, Australia
22-26 June 2025

Editor:
Kelly Rischmiller

ISBN: 979-8-3313-2089-8

eISBN: 979-8-3313-2090-4

DOI: <https://doi.org/10.52202/080513>

PROCEEDINGS FROM THE 14TH WORLD CONFERENCE ON TIMBER ENGINEERING (2025)

EDITORS

Kelly Rischmiller

The University of Queensland, School of Civil Engineering / Australian Research Council Industrial Transformation Research Hub to Advance Timber for Australia's Future Built Environment (ARC Advance Timber Hub)

CO-EDITORS

From The University of Queensland, School of Civil Engineering

Mahmoud Abu Saleem

Chloe Downey

Joe Gattas

Duncan Hossy

Lisa Ottenhaus

Wenxuan Wu

Zidi Yan

Yuhao Zhang

All authors have submitted two-page extended abstracts, which were peer reviewed by the WCTE 2025 International Scientific Committee. The full papers have not been further reviewed but checked for conformity. Many of these papers represent ongoing research and it is expected that many of the papers will appear in a more comprehensive form in scientific journals in due course.

PHOTO COVER

Murdoch University, Boola Katitjin Building – Perth, Western Australia – *image courtesy of Aurecon Group*

25 King Street Commercial Tower – Brisbane, Queensland – *image courtesy of Lendlease*

Monterey Apartments – Brisbane, Queensland – *image courtesy of Aurecon Group*

Library at the Dock – Melbourne, Victoria – *image courtesy of Lendlease*

25 King Street Commercial Tower – Brisbane, Queensland – *image courtesy of Lendlease*

The individual contributions in this publication and any liabilities arising from them, remain the responsibility of the authors. The designations employed and the presentation of material in this publication do not imply the expression of any opinion whatsoever on the part of the World Conference on Timber Engineering 2025, concerning the legal status of any country, territory, city or area or of its authorities, or concerning the delimitations of its frontiers or boundaries. The publisher is not responsible for possible damages, which could arise due to the content derived from this publication.

Copyright ©(2025) WORLD CONFERENCE ON TIMBER ENGINEERING 2025 (WCTE 2025) All rights reserved.

ISBN: Print 979-8-3313-2089-8

ISBN: e-proceedings 979-8-3313-2090-4

Printed with permission by Curran Associates, Inc. (2025)

For permission requests, please contact WCTE 2025 at the address below.

Email: wcte2025@civil.uq.edu.au

Additional copies of this publication are available from:

Curran Associates, Inc, 57 Morehouse Lane, Red Hook, NY 12571 USA

Phone: +1 845-758-0400, Fax: +1 845-758-2633, Email: curran@proceedings.com

www.proceedings.com

PROCEEDINGS FROM THE 14TH WORLD CONFERENCE ON TIMBER ENGINEERING (2025) – BRISBANE, AUSTRALIA – 22 TO 26 JUNE 2025

The World Conference on Timber Engineering (WCTE) is the premier forum of the world for dissemination of the latest developments, technologies and innovations in wood materials and timber design, engineering and construction.

The scope covers research, education and practice topics from all over the globe. The conference has attracted wide international representation and attendance.

The name WCTE exists since 1998 when the world's timber engineering society decided to coordinate the former world events and to introduce biennial consecutive conferences in Europe, America, Asia & Pacific.

WCTE 2025 CONFERENCE COMMITTEE

Chair: Keith Crews, Professor, The University of Queensland School of Civil Engineering, Director of the Australian Research Council Industrial Transformation Research Hub to Advance Timber for Australia's Future Built Environment

Deputy Chair: Greg Nolan, Professor, University of Tasmania School of Architecture & Design, Director of the University of Tasmania's Centre for Sustainable Architecture with Wood

Secretariat: Kelly Rischmiller, The University of Queensland, School of Civil Engineering, Manager of the Australian Research Council Industrial Transformation Research Hub to Advance Timber for Australia's Future Built Environment

ABOUT WCTE

HISTORY

The forerunner of WCTE dates back to May 1984, and the Pacific Timber Engineering Conference (PTEC) in Auckland, New Zealand. The first World Conference on Timber Engineering (WCTE) started in 1998 in Montreux, Switzerland, when the world's timber engineering society decided to coordinate the former world events and to introduce a biennial rhythm with consecutive conferences in Europe, America, Asia & Pacific.

Today WCTE is the world's premier scientific dissemination forum for presenting and discussing the latest technical and architectural developments and innovations in timber engineering and construction. The scope covers research, education and practice topics from all over the world. The conference has attracted wide international representation and attendance.

1984	PTEC Auckland, New Zealand
1988	ICTE Seattle, USA
1989	PTEC Auckland, New Zealand
1990	ITEC Tokyo, Japan
1991	ITEC London, UK
1994	PTEC Surfer's Paradise, Australia
1996	IWEC New Orleans, USA
1998	WCTE Montreux, Switzerland
2000	WCTE Whistler, Canada
2002	WCTE Shah Alam, Malaysia
2004	WCTE Lahti, Finland
2006	WCTE Portland, USA
2008	WCTE Miyazaki, Japan
2010	WCTE Trentino, Italy
2012	WCTE Auckland, New Zealand
2014	WCTE Quebec City, Canada
2016	WCTE Vienna, Austria
2018	WCTE Seoul, Rep. of Korea
2021	WCTE Santiago, Chile
2023	WCTE Oslo, Norway
2025	WCTE Brisbane, Australia
2027	WCTE Edmonton, Canada

ABOUT WCTE

WCTE COORDINATING COUNCIL 2025

South Korea

Kugbo Shim
Jung-Kwon Oh

Chile

Juan Jose Ugarte
Sebastian Carcamo
Carlito Calil

Norway

Kjell Arne Malo
Anders Q. Nyrud
Kristine Nore
Knut Werner Lindeberg Alsen

Australia

Keith Crews
Greg Nolan
Kelly Rischmiller

Germany

Jan Willem van de Kuilen
WCTE Coordinating Council Secretariat

NATIONAL ORGANISERS WCTE 2025

Main Organisers

The University of Queensland, School of Civil Engineering / Australian Research Council Industrial Transformation Research Hub to Advance Timber for Australia's Future Built Environment (ARC Advance Timber Hub)

Supporting Institutions

Brisbane Economic Development Agency
Business Event Australia
Tourism & Events Queensland

Conference Chairs & Secretariat WCTE 2025

Chair: Keith Crews, Professor, The University of Queensland School of Civil Engineering, Director of the Australian Research Council Industrial Transformation Research Hub to Advance Timber for Australia's Future Built Environment (ARC Advance Timber Hub)

Deputy Chair: Greg Nolan, Professor, University of Tasmania School of Architecture & Design, Director of the University of Tasmania's Centre for Sustainable Architecture with Wood

Secretariat: Kelly Rischmiller, The University of Queensland School of Civil Engineering, Manager of the Australian Research Council Industrial Transformation Research Hub to Advance Timber for Australia's Future Built Environment (ARC Advance Timber Hub)

INTERNATIONAL SCIENTIFIC COMMITTEE

Fank, Pamela Yohana	Argentina	Sandhaas, Carmen	Germany
Torran, Eduardo	Argentina	Schober, Kay-Uwe	Germany
Cowled, Craig	Australia	van de Kuilen, Jan-Willem	Germany
Crews, Keith	Australia	Harte, Annette	Ireland
Dewsbury, Mark	Australia	Ballerini, Marco	Italy
Dunn, Andrew	Australia	Casagrande, Daniele	Italy
Gasparri, Eugenia	Australia	Faggiano, Beatrice	Italy
Gattas, Joe	Australia	Fragiacomo, Massimo	Italy
Gilbert, Benoit	Australia	Giongo, Ivan	Italy
Nolan, Gregory	Australia	Piazza, Maurizio	Italy
Noroozinejad, Ehsan	Australia	Polastri, Andrea	Italy
Ottenhaus, Lisa	Australia	Isoda, Hiroshi	Japan
Shanks, Jon	Australia	Kobayashi, Kenji	Japan
Singh, Tripti	Australia	Leijten, Adrian	Netherlands
Brandner, Reinhard	Austria	Buchanan, Andy	New Zealand
Füssli, Josef	Austria	Quenneville, Pierre	New Zealand
Kaufmann, Hermann	Austria	Raftery, Gary	New Zealand
Lukacevic, Markus	Austria	Zarnani, Pouyan	New Zealand
Schickhofer, Gerhard	Austria	Kvande, Tore	Norway
Baño, Vanesa	Belgium	Malo, Kjell	Norway
Descamps, Thierry	Belgium	Modaresi, Roja	Norway
Calil Junior, Carlito	Brazil	Øvrum, Audun	Norway
Neto, Calil	Brazil	Stamatopoulos, Haris	Norway
Chui, Ying Hei	Canada	Thiis, Thomas	Norway
Dagenais, Christian	Canada	Tomasi, Roberto	Norway
Lam, Frank	Canada	Branco, Jorge	Portugal
Li, Minghao	Canada	Dias, Alfredo	Portugal
Loss, Cristiano	Canada	Arriaga, Francisco	Spain
Malek, Sardar	Canada	Cabrero, José Manuel	Spain
Popovski, Marjan	Canada	F. Llana, Daniel	Spain
Salem, Sam	Canada	González-Rodrigo, Beatriz	Spain
Salenikovich, Alexander	Canada	Íñiguez-González, Guillermo	Spain
Smith, Ian	Canada	Danielsson, Henrik	Sweden
Tannert, Thomas	Canada	Frühwald Hansson, Eva	Sweden
Viau, Christian	Canada	Goto, Yutaka	Sweden
Wiesner, Felix	Canada	Johansson, Marie	Sweden
He, Minjuan	China	Ormarsson, Sigurdur	Sweden
Li, Zheng	China	Serrano, Erik	Sweden
Zhang, Shengdong	China	Vessby, Johan	Sweden
Correal, Juan	Colombia	Franke, Bettina	Switzerland
Kuklik, Petr	Czech Republic	Lehmann, Martin	Switzerland
Björnfort, Anders	Denmark	Sigrist, Christophe	Switzerland
Fink, Gerhard	Finland	Steiger, René	Switzerland
Fortino, Stefania	Finland	Chen, Jessie Y.	United States of America
Jaaranen, Joonas	Finland	Clouston, Pegg	United States of America
Moutou Pitti, Rostand	France	Morrell, Jeff	United States of America
Blass, Hans J.	Germany	Riggio, Mariapaola	United States of America
Dietsch, Philipp	Germany	Sinha, Arijit	United States of America
Haller, Peer	Germany	Muszynski, Lech	United States of America
Jockwer, Robert	Germany		

OFF-SITE MANUFACTURING FOR A NEW MODULAR WOODEN ARCHITECTURE MADE IN ITALY

Albino Angeli¹, Jacopo Bono², Guido Callegari², Adriano Francescotti¹, Massimiliano Lo Turco², Stefano Menapace³, Jean Carlos Lapo Procel², Andrea Rossi⁴, Benedetta Rossi¹, Paolo Simeone², Andrea Tomalini²

ABSTRACT: The industrial development project “SU.PRE.MO – from Super X-Lam To Prefabrication and 2D/3D Modularity”, organised with the support of the Provincia Autonoma di Trento, focused on modular homes for self-build and emergency situations, using the prefabricated CLT products of the Trento-based company. XLAM Dolomiti was the project leader. This paper describes the design activities relating to the *modular house kits* designed in versions from 20m² to 100m² by the Polytechnic University of Turin, in cooperation with XLAM Dolomiti. A combination of off-site manufacturing and the standard products of XLAM Dolomiti was used to produce a digital catalogue of the various building concepts with a number of possible configurations for the modular homes.

KEYWORDS: off-site manufacturing, modularity, self-build houses, parametric design, computational design

1 – INTRODUCTION

The main objective of the multidisciplinary research project SU.PRE.MO was to develop a new generation of architecture in engineered wood from Super X-Lam to Prefabrication and 2D/3D Modularity. This paper presents the one-floor modular homes built using prefabricated components and off-site manufacturing systems with a wood-based CLT panel construction system. The product is destined for countries in which self-build homes are regulated and established, and included the analysis of social requirements for the development of a product capable of adapting to various international contexts and conditions.

2 – BACKGROUND

The SU.PRE.MO. project takes up one of the challenges launched by the EU: to innovate the building sector through industrialised construction using bio-based materials in order to increase the diffusion of engineered timber construction systems as a decarbonisation strategy.

The project – a technological and production challenge – focuses on the theme Off-site Manufacturing Methods for Sustainable Building Systems.

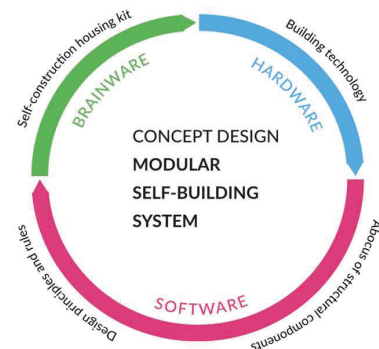


Figure 1. Concept design process according to the three fundamental components of technology for the SU.PRE.MO project

Smart manufacturing is an important element of industry 5.0, the Collaborative Industry, a business model characterised by the goal of giving added value to production by creating highly customised products. In this specific case, the aim was to develop a design process capable of accompanying the most important Italian CLT manufacturer in the automation of the design stages of a self-build housing model, using a simplified and accessible construction process. The system includes the support of a user-friendly interface for end users, able to generate multiple housing solutions in a short time, while

¹ XLAM Dolomiti Spa, Castelnuovo, Trento, Italy, albino.angeli@xlamdolomiti.it

² Polytechnic University of Turin, Department of Architecture and Design, Torino, Italy, guido.callegari@polito.it

³ ARM Process Srl, Trento, Italy, stefano@armprocess.com

⁴ University of Kassel, Faculty of Architecture, Urban Planning and Landscape Architecture, Kassel, Germany, rossi@asl.uni-kassel.de

respecting the rules and technical constraints present. The SU.PRE.MO. project was born in the context of the Autonomous Province of Trento (PAT), which is characterised by an industrial ecosystem of companies specialised in the sector of timber construction and research for eco-sustainable buildings. In Italy, this reality is one of the excellences in the reference sector that, in the last two decades, has generated added value with internationally recognisable contributions such as the SOFIE project conducted by CNR Ivalsa (now CNR Ibe) with the support of the Autonomous Province of Trento and ARCA, which is the certification system designed specifically for timber buildings by Habitech and Trentino Sviluppo. The acronym SU.PRE.MO identifies the three main focuses of the project:

- SU indicates the development of a Superlegno;
- PRE the theme of prefabrication systems and processes;
- MO the field of modular housing for self-construction and emergency.

In this framework, the skills of the Polytechnic University of Turin have been employed in developing the design of modular houses for self-construction, which is explored in depth in the context of this contribution. In addition to the Polytechnic University of Turin, the multidisciplinary research activity of the SU.PRE.MO project involved the Trentino technology district Habitech, the Bruno Kessler Foundation, the CNR IBE of San Michele all'Adige, the University of Trento, the University of Florence as well as several start-ups, innovative companies in the digital sector, and professional firms.

2.1 INTEGRATED CLT MANUFACTURING

XLAM Dolomiti is located in Trentino: founded in 2012 by the Paterno Group, it quickly gained an important position in the production of CLT panels and today represents one of the most authoritative and cutting-edge companies in the sector at an international level.



Figure 2. Photos from the manufacturing site in Castelnuovo (TN) – Italy. Photo: Paolo Simeone.

One of the distinctive features of XLAM Dolomiti is its integrated approach to the construction cycle; the company offers its customers a complete service, from the production of the panels to the design and construction of the buildings, guaranteeing perfect integration of the various phases up to the final realization.



Figure 3: Construction site of XLAM Dolomiti in Italy.

3 – PROJECT DESCRIPTION

The “SU.PRE.MO – from Super X-Lam To Prefabrication and 2D/3D Modularity” research project aims to develop innovative timber-based products. Initiated on September 5, 2022, the project has a three-year duration and is currently underway. SU.PRE.MO. includes a specific macro-deliverable on modularity (MO), which is divided into two branches:

- One investigates the design of emergency modules, created with the intention of providing shelter to those affected by natural disasters, where rapid response times are crucial.
- The other, which is the object of this paper, focuses on the creation of housing modules, with particular emphasis on those designed for self-construction.

The tasks related to self-construction modules include the creation of a series of standardized prefabricated modules intended for foreign markets (outside Italy) where self-construction is allowed. Starting from a limited number

of basic CLT panels, it is possible to create a huge number of dwellings with these minimal production variations (see section 5). Furthermore, the project encompasses the study of architectural solutions, dwelling volumes, formal aspects, and performance.

Another key element of the project is the creation of a digital platform for non-professional clients, as consumers, managing the process from inquiry to delivery. Through an online configurator, users can customize their dwelling based on a series of feasible solutions adaptable to individual needs.

The objective is to offer a user-friendly, customizable self-construction system that guarantees high-quality standards. Flexibility and adaptability are fundamental components of this modular system relying on a set of realistic solutions.

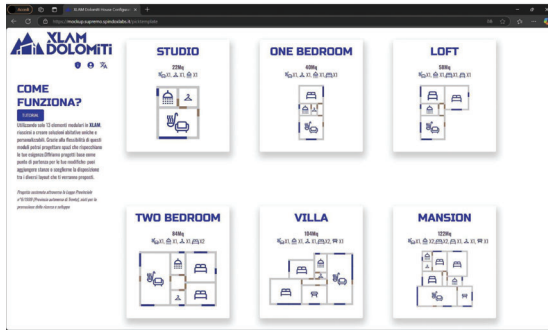


Figure 4. Digital platform's online configurator.

The digital platform plays a crucial role, allowing customers to configure the house, receive self-construction materials with precise assembly instructions, and exploit ancillary services from local partners. This platform will enable reaching customers worldwide, leveraging e-commerce systems and integrated logistics.

XLAM Dolomiti is in charge of the manufacturing of CLT panels, timber structure engineering and industrial use. Through regular meetings to review and share results, a project management approach facilitates collaboration between the organization and different entities, including research institutions, universities and specialists. Each organization provides specialized knowledge according to the various goals, collaborating to accomplish the project's objectives.

4 – DESIGN PROCESS

The research activity included an initial analysis of the benchmarks at international level with reference to the development of residential modules, and in particular to self-build solutions, both experimental and established.

Subsequently, using a system of modular grids the design rules for the technological and construction system using load-bearing CLT panels and the organization of the rooms in the versions to be offered were identified. A handbook with a brief description of the main steps of the design process was written, which led to the charting of the design and process rules for the SU.PRE.MO modular system and the programming of an algorithm to generate the homes automatically using an online configurator.

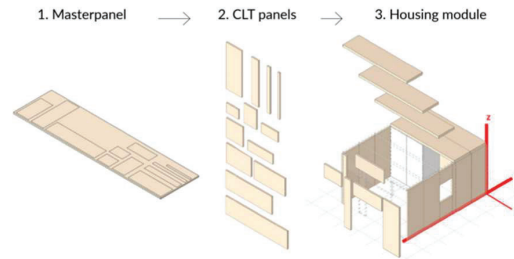


Figure 5. Production process: from the masterpanel of CLT (1) made in XLAM Dolomiti plant to typical panels (2) and housing module (3).

5 – MODULAR SELF-BUILD SYSTEM

5.1 A PROCESS FOR DESIGN IN SELF-BUILD PROJECTS

One of the primary goals of the SU.PRE.MO. project has been to establish a design and self-building process utilizing a limited number of structural components. The research led to the identification and definition of a system of fundamental design criteria — both architectural and constructive — developed by the research team at the Polytechnic University of Turin in collaboration with the expert team at XLAM Dolomiti.

This collaboration aimed to develop a new method for aggregating rooms and distributing functions in a one-floor house based on a simple grid using the measurement of the width of the CLT panel as a modular parameter: 1120 mm.

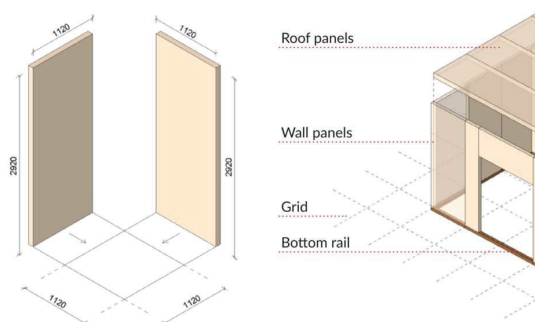


Figure 6. Modular grid based on the width of the CLT panel (112 cm); positioning of the main structural components on the grid.

An optimized self-construction process through a set of 10 basic rules constituted the design principles of the SU.PRE.MO. system that includes 4 "standard-kit" housing modules of various sizes, 26, 46, 67, and 84 (m²).

The 10 basic rules are: 01-Modular grid; 02-Wall system positioning; 03-Floor system positioning; 04-Wall system; 05- Lintel system; 06-Door/window opening; 07-Floor system; 08-Connection system; 09-Rooms modular generation; 10-Self-construction kit.

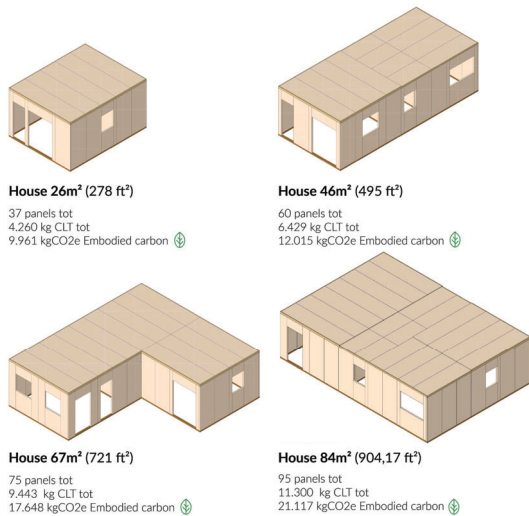


Figure 7. Four housing modules created using the panel kit in accordance with the 10 basic rules; the embodied carbon (KgCO_{2e}) related to the mass of CLT utilized in each house.

In the design principles of SU.PRE.MO. system "Rule 09 – Rooms modular generation" is the fundamental rule that defines the criteria for the aggregation process of the rooms and the distribution functions for achieving the optimal configurations of the MO Self-construction. Starting from the 112x112 modular grid by applying the first 8 rules stated above, it was possible to define the scheme of all the rooms that can be generated to guarantee the main living functions of a house. (Figure XX). With an alphanumeric code, the scheme includes a set of 15 rooms, related to the typical functions, from A1.2 to A4.9 where the numbers refer to the modules of the grid; for instance: A2,4 means a room of dimensions (112 X 2) X (112 X 4) = 224x448 cm² = a room of 10,00 m² of surface area.

TYPICAL FUNCTIONS	MODULAR GRID / ROOMS															
Corridor	1,2	1,3	1,4	2,2												
Storage/laundry	1,2			2,2												
Bathroom				2,2	2,3											
Kitchen					2,3	2,4	3,3	3,4	3,5	4,4	4,5					
Office					2,3	2,4	3,3	3,4								
Single bedroom						3,3	3,4									
Living room							3,3	3,4	3,5	4,4	4,5	4,6	4,7			
Twin/double bedroom								3,4	3,5	4,4	4,5	4,6				
Openspace									3,4	3,5	4,4	4,5	4,6	4,7	4,8	4,9

Figure 8. Abacus of 15 rooms generated by the modular grid, from A1,2 to A4,9, and their typical functions.

To show Rule-09, we will describe the 46 m² housing module (Figure XX), which is composed starting from the aggregation of 4 rooms: A1,2 (corridor), A2,3 (bathroom), A3,4 (double bedroom), and A4,4 (living room and kitchen). The following drawing illustrates the layout of the house with its 4 aggregated rooms.

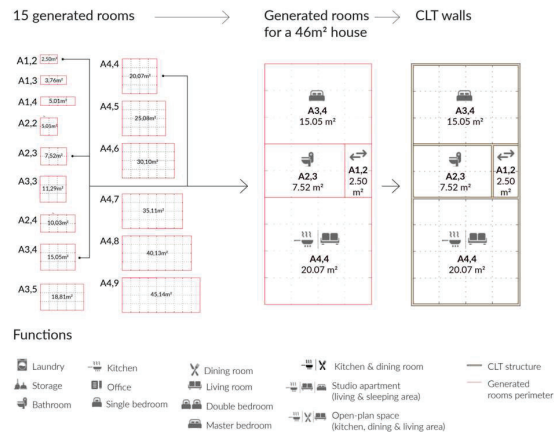


Figure 9. Abacus of the 15 generated rooms and the application of Rule-09 "Rooms modular generation" for the 46m² house.

This set of rules has been compiled into a manual titled "SU.PRE.MO.Sistema_Mo Autocostruzione Handbook" (SU.PRE.MO. Modular Self-build System Handbook) to provide a comprehensive tool for outlining the fundamental aspects of the design process. [1]

The research team at the Polytechnic University of Turin designed the manual with a detailed visual layout, where both text and illustrations (including 2D-3D schematics and architectural drawings) work together to clarify the complexity of the project's results.

The manual has been an essential tool for the subsequent development at the software level for advanced algorithmic solutions for the semi-automatic generation of housing modular layouts (see section 5.3).

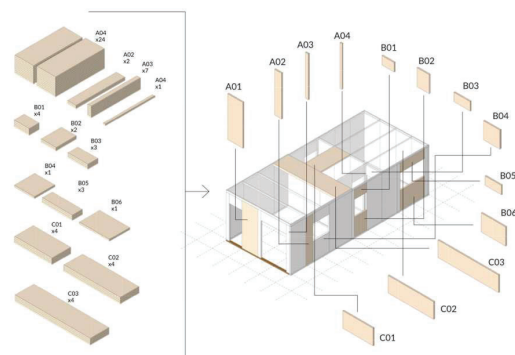


Figure 10. Self-construction kit made of 54 CLT panels ready for the assembly of a SU.PRE.MO. 46m² modular house.

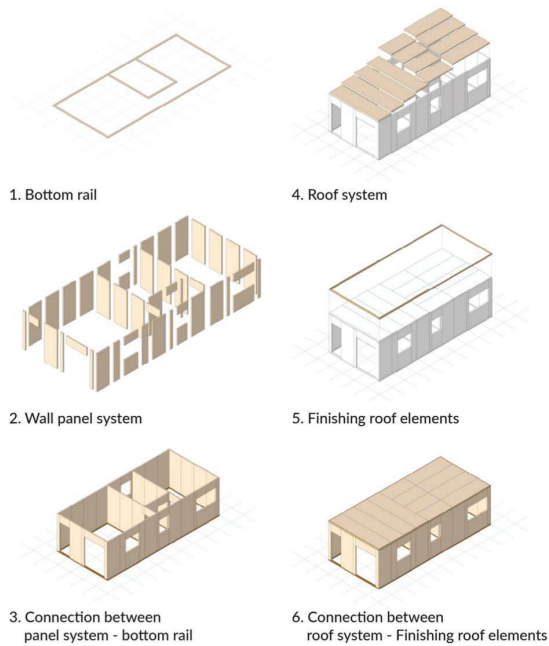


Figure 11. Assembly process of the self-construction housing kit for a SU.PRE.MO. 46m² modular house.

5.2 OFF-SITE MANUFACTURING PROCESS

Modular timber architecture is manufactured off-site using an organized and iterative process that begins with an initial concept design and continues through engineering and refinement stages until a final catalogue of elements ("Abaco") is defined. This approach fully exploits the advantages of industrialized timber construction by ensuring high precision, reduced material waste and improved assembly efficiency.

a) Modular design framework and concept development.

The design process starts with a parametric framework that defines modular constraints according to manufacturing, transport and on-site assembly requirements. The aim of the concept phase is to create spatial arrangements that optimize uniformity while maintaining architectural flexibility. At this stage, the following important factors are taken into account:

- Panel sizing based on transit logistics and production optimization;
- Evaluation of structural integrity to ensure seismic and load bearing specifications are met.

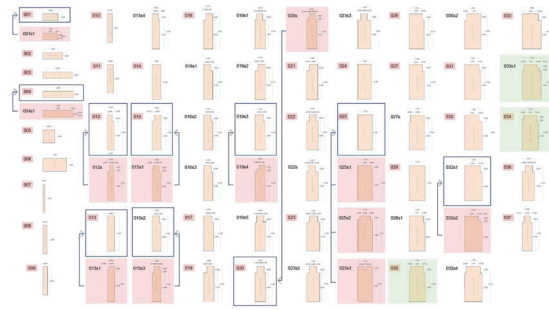


Figure 12. First step of optimization of the panel abacus.

b) Design optimization and iterative refinement.

Once the modular principles have been established, each design element is evaluated for structural performance and manufacturability during an iterative refinement phase. During this phase,

- *raw material consumption* is reduced and *sustainability* is improved through material optimization.



Figure 13. Further optimization of the panel abacus.

- *Connector system* engineering that ensures reliable and rapid on-site installation with minimal manpower.

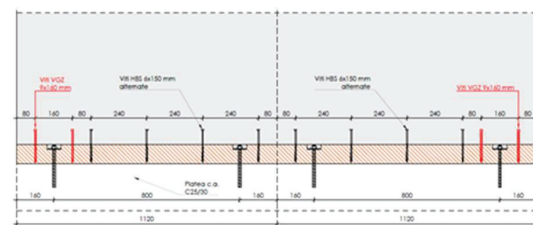
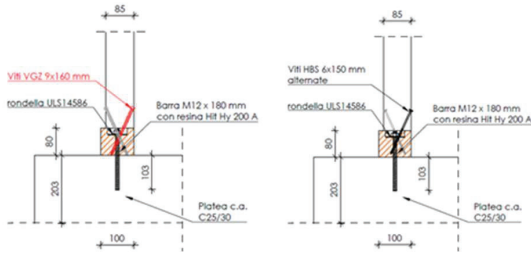


Figure 14. Examples of connection details.



Figures 15. Examples of connection details.

- *Digital simulation* using Building Information Modelling (BIM) and Finite Element Analysis (FEA) to confirm the effectiveness of load-bearing components and structural nodes.

c) Abaco's final panel catalogue and standardization.

The final stage is to create a catalogue of the standardized components that make up the modular system. This "Abaco" will include:

- *Wall panels arranged according to their structural purpose.*
- *Roof components, optimized for spans, load distribution and thermal performance.*
- *Details of connections, such as mechanical fasteners.*

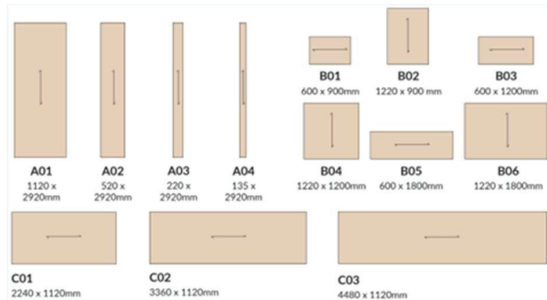


Figure 16. CLT panels KIT made of 13 structural elements organized into walls (from A01 to A04), lintel (from B01 to B06) and floor (C01, C02 and C03).

An industrialized production workflow is based on the refined panel catalogue, allowing mass customization while ensuring cost efficiency and consistent quality. Before being delivered to site, each component is prefabricated in a controlled factory environment, incorporating quality control procedures, precision CNC machining and bonding techniques.

d) Integration with logistics and digital manufacturing.

The modular components are easily integrated into a digital manufacturing process, where millimeter accuracy is guaranteed by CAD/CAM-controlled production. Optimize packaging and transportation strategies for volumetric efficiency.

Modular timber architecture achieves high levels of

efficiency through this structured off-site manufacturing strategy, which also reduces construction times, improves sustainability and ensures compliance with engineering and performance standards.

5.3 ADVANCED ALGORITHMIC SOLUTIONS FOR SEMI-AUTOMATIC GENERATION OF LAYOUTS

The above mentioned web platform consists of a database of tested solutions and a filter interface to select the most appropriate one for the end user. Regarding the population of this database, a semi-automatic generative system was implemented to create different design configurations.[2]

This system consists of a sequential computational process divided into six interconnected phases. The definition of housing module aggregation standards required a preliminary analysis of the interrelationships between geometric, alphanumeric and topological information. This led to the definition of an abacus of rooms with typical functions, characterised by modular dimensions, typological and topological attributes. This abacus was converted into a structured data format for computational processing. The developed methodology exploits visual programming language through a dedicated environment and a specific plugin (Wasp) to implement combinatorial design algorithms and integrated data management.

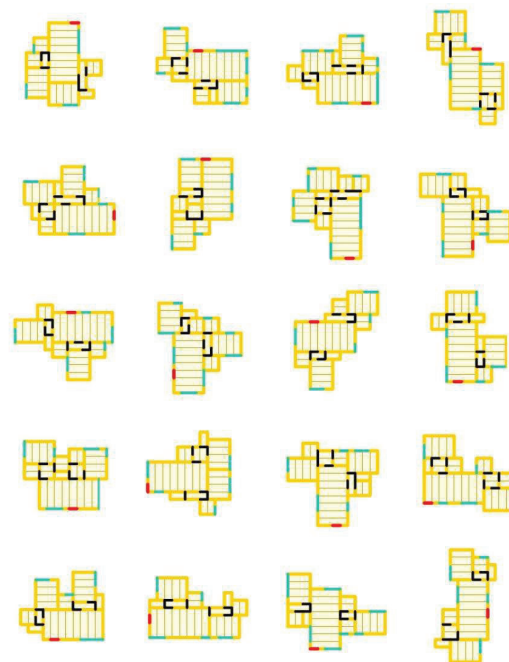


Figure 17. Generated solutions characterized by the same connection graph.

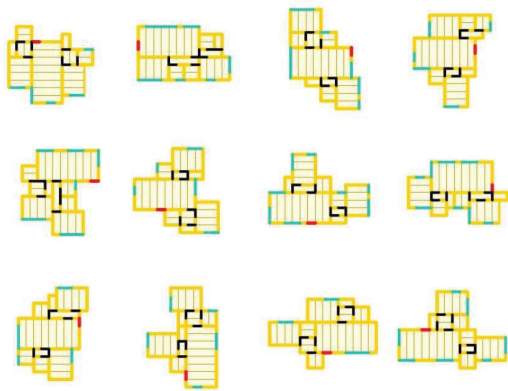
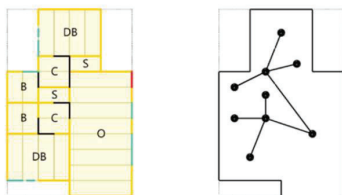


Figure 18. Generated solutions characterized by the same connection graph.

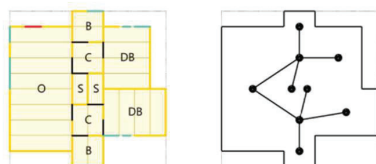
A visual interface allows the selection of desired functions and the definition of the total area. Dedicated scripts extract combinations of elements that satisfy the set constraints from the abacus. The plan generation phase uses a stochastic aggregation algorithm based on customisable adjacency rules to ensure distributional coherence and spatial connectivity between rooms.

The algorithm allows the variation of random parameters, producing a wide range of alternative solutions, while keeping the topological connection structure and the original constraints unchanged. The generated floor plans are then enriched with connection elements, such as doors and windows, then exported for further processing.

Area/Perimeter: 0.792
AreaBB/Area: 1.9



Area/Perimeter: 0.76
AreaBB/Area: 1.9



Area/Perimeter: 0.917
AreaBB/Area: 2.026

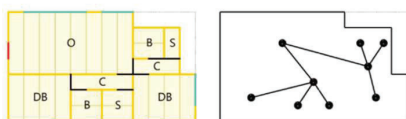


Figure 19. Three "compact" solutions with the same graph and same functions (O: Openspace; DB: DoubleBedroom; B: Bathroom; C: Corridor; S: Storage).

In order to ensure the quality and the consistency of the generated solutions, an algorithmic filtering phase was implemented to eliminate sub-optimal configurations. The filters adopted are based on geometric parameters, such as the area/perimeter ratio and the ratio between the plan area and the area of the minimum footprint rectangle. The selected floor plans are further processed with the automatic insertion of windows, in compliance with the regulations regarding air-to-light ratios. For this purpose, differentiated algorithms have been implemented to comply with specific regulatory frameworks, based on distinct calculation methodologies. The final stage of the process involves converting and exporting the data into a standardised textual format, including descriptive metadata such as the reference regulatory framework, the functional surface area, the spatial connectivity structure and a unique identification code, for subsequent integration into the web platform database.

Through the proposed methodology, starting from a syntetic abacus, more than one million configurations were generated.

Adopting open data formats and a fully automated computational workflow gives the system high adaptability and flexibility concerning changes in design parameters or modular dimensions.

5 – RESULTS

The project focuses on developing innovative modular self-build housing. Key aspects include:

Modular Housing: Designing prefabricated housing units for self-build scenarios using cross-laminated timber (CLT) through a digital platform easy to use for end-users.

Self-Build System: Creating an easy-to-assemble housing kit with a digital configurator to simplify design, reduce waste and optimize construction.

Design & Automation: Using computational design to generate efficient housing solutions with over a million possible configurations.

Sustainability: Prioritizing eco-friendly materials and circular economy principles.

Overall, the SU.PRE.MO project integrates material innovation, automation and sustainability to create efficient, scalable modular housing solutions.

6 – CONCLUSION

The SU.PRE.MO project has developed an automated design process for modular self-build housing, using engineered wood, emphasizing automation, adaptability and sustainability, simplifying and making construction more accessible. It features a user-friendly interface that generates multiple housing solutions while following technical constraints. The project established design and self-construction rules that minimize waste, optimize transport storage, reduce construction time and adapt to different markets.

A key innovation is the use of parametric and computational design, enabling high customization. By utilizing open data formats and an automated workflow, the system can generate over a million configurations, ensuring adaptability to design changes. The project also integrates off-site manufacturing for sustainable building systems and prioritizes bio-based materials, supporting the EU's decarbonization goals.

The use of the digital platform to drive the adoption of this solution in the self-build market, will require further development and implementation to enhance the end-user experience.

The system's flexibility allows for expansion beyond single-floor modular homes (multistorey buildings). Additionally, future research should focus on integrating plants and finishings using smart manufacturing, new materials, and partnerships to offer a turnkey building solution.

7 – REFERENCES

[1] "Su.Pre.Mo. Sistema_ MO Autocostruzione. Handbook" is an output of the "Deliverable 4.2.3 / Architectural design of self-construction modules" of SU.PRE.MO project, designed by the team of the Polytechnic University of Turin Department of Architecture and Design, Guido Callegari (scientific director) and Paolo Simeone, with the collaboration of Jean Carlos Lapo Procel, and the team of XLAM Dolomiti, Albino Angeli (CEO e President), Stefano Menapace (Project Manager - ARM Process Srl), Adriano Francescotti, Donato Fanti, Evgeny Borovin, Benedetta Rossi and Chiara Gonzo.

[2] The algorithmic platform for the automatic generation of project layouts is a partial product of the "Deliverable 4.3 / Software platform of self-construction modules". This specific Task, designed by the team of the Department of Architecture and Design of the Polytechnic University of Turin, Massimiliano Lo Turco (scientific manager) and Andrea Tomalini, with the

collaboration of Andrea Rossi, and the team of XLAM Dolomiti, previously mentioned, and the team of Spindox, responsible for Deliverable 4.3.