

In Vitro 3D Models of Haematological Malignancies: Current Trends and the Road Ahead?

Original

In Vitro 3D Models of Haematological Malignancies: Current Trends and the Road Ahead? / Mattioda, Carlotta; Voena, Claudia; Ciardelli, Gianluca; Mattu, Clara. - In: CELLS. - ISSN 2073-4409. - 14:1(2025). [10.3390/cells14010038]

Availability:

This version is available at: 11583/2996172 since: 2025-01-03T11:28:49Z

Publisher:

MDPI

Published

DOI:10.3390/cells14010038

Terms of use:

This article is made available under terms and conditions as specified in the corresponding bibliographic description in the repository

Publisher copyright

(Article begins on next page)

Review

In Vitro 3D Models of Haematological Malignancies: Current Trends and the Road Ahead?

Carlotta Mattioda ¹, Claudia Voena ², Gianluca Ciardelli ¹ and Clara Mattu ^{1,*}

¹ DIMEAS, Politecnico di Torino, C.so Duca degli Abruzzi 24, 10129 Torino, Italy; carlotta.mattioda@polito.it (C.M.); gianluca.ciardelli@polito.it (G.C.)

² Department of Molecular Biotechnology and Health Sciences, Molecular Biotechnology Center, University of Torino, 10126 Torino, Italy; claudia.voena@unito.it

* Correspondence: clara.mattu@polito.it

Abstract: Haematological malignancies comprise a diverse group of life-threatening systemic diseases, including leukaemia, lymphoma, and multiple myeloma. Currently available therapies, including chemotherapy, immunotherapy, and CAR-T cells, are often associated with important side effects and with the development of drug resistance and, consequently, disease relapse. In the last decades, it was largely demonstrated that the tumor microenvironment significantly affects cancer cell proliferation and tumor response to treatment. The development of biomimetic, in vitro models may promote the investigation of the interactions between cancer cells and the tumor microenvironment and may help to better understand the mechanisms leading to drug resistance. Although advanced in vitro models have been largely explored in the field of solid tumors, due to the complex nature of the blood cancer tumor microenvironment, the mimicking of haematological malignancies mostly relies on simpler systems, often limited to two-dimensional cell culture, which intrinsically excludes the microenvironmental niche, or to ethically debated animal models. This review aims at reporting an updated overview of state-of-the-art hematological malignancies 3D in vitro models, emphasizing the key features and limitations of existing systems to inspire further research in this underexplored field.

Keywords: in vitro models; haematological malignancies; tumor microenvironment



Academic Editors: Anna Bassi and Stefania Vernazza

Received: 26 November 2024

Revised: 23 December 2024

Accepted: 30 December 2024

Published: 2 January 2025

Citation: Mattioda, C.; Voena, C.; Ciardelli, G.; Mattu, C. In Vitro 3D Models of Haematological Malignancies: Current Trends and the Road Ahead? *Cells* **2025**, *14*, 38. <https://doi.org/10.3390/cells14010038>

Copyright: © 2025 by the authors. Licensee MDPI, Basel, Switzerland. This article is an open access article distributed under the terms and conditions of the Creative Commons Attribution (CC BY) license (<https://creativecommons.org/licenses/by/4.0/>).

1. Introduction

Haematological malignancies are life-threatening, systemic diseases, commonly referred to as blood cancers (BCs), and they were responsible for nearly 0.7 million deaths worldwide in 2020 [1,2]. BCs involve a diverse range of neoplasms arising from cells within the bone marrow (BM) and the lymphatic system and are categorized into myeloid and lymphoid tumors, depending on the altered precursor cells. BCs include three main classes of malignancies: leukaemia, myeloma, and lymphoma [3].

Leukaemia is characterized by the malignant clonal expansion of sub-populations of hematopoietic stem cells (HSPCs) within the BM and is further categorized according to the mutated precursor cell type (i.e., lymphoid or myeloid) and disease progression pace (i.e., acute or chronic) [4]. Thus, leukaemia encompasses the following conditions: acute lymphocytic leukaemia (ALL), which arises from mutated lymphoblasts and is commonly diagnosed at paediatric age; chronic lymphocytic leukaemia (CLL), which is a consequence of B-lymphocytes alteration, and acute or chronic myeloid leukaemia (AML or CML) [5], which arise, respectively, from myeloid progenitors and myeloblasts.

Multiple myeloma (MM) is a B-cell malignancy which affects completely differentiated plasma cells in the BM [6–9]. During B-lymphocyte development, genetic alterations may lead to the development of MM cells [10]. MM cells progressively reduce the available space for normal cells in the BM, induce osteoclasts recruitment, and interfere with MSCs differentiation into osteoblasts, causing abnormal bone resorption [11–13].

The third category of BCs consists of malignant lymphomas, which originate from the clonal expansion of lymphocytes [14,15]. Lymphomas are classified into Hodgkin lymphoma (HL) and non-Hodgkin's lymphomas (NHLs), which include mature B-cell-, mature T-cell-, and natural killer (NK)-cell neoplasms.

HL represents one of the most common tumors in young adults. Primary HL has a promising prognosis, with a 5-year survival rate around 98% [16], while the long-term survival rate remains poor due to relapsed or refractory disease [17]. Histologically, HL is classified in classical HL (cHL) and nodular lymphocyte-predominant HL. Classical HL accounts for almost 95% of all diagnosed HLs and is characterized by the presence of CD30+ Reed–Sternberg [18], large multinucleated cells derived from B-lymphocytes, embedded in a tumor microenvironment (TME) rich in immune cells [19–21], while nodular lymphocyte predominant HL is characterized by the presence of CD20+ lymphocyte-predominant (LP) cells, surrounded by a TME mostly composed of mature lymphocytes [22].

NHLs include a vast group of BCs, which commonly develop in the lymph nodes but which can occur in almost any lymphoid tissue [23], arising from B-lymphocytes (i.e., follicular lymphoma, Burkitt lymphoma, diffuse large B-cell lymphoma, mantle cell lymphoma, marginal zone lymphoma, and primary central nervous system lymphoma), or from T-lymphocytes or NK-cells (i.e., adult T-cell lymphoma and mycosis fungoides) [24]. In a physiological context, lymphoid progenitors, presenting both B- and T-cell potential, originate in the BM followed by migration of T-cell progenitors to the thymus, and of B-lymphocytes to secondary lymphoid organs (SLOs) (e.g., lymph nodes and spleen). Maturation arrest during lymphocyte development or the establishment of proliferative and anti-apoptotic alterations may lead to a lymphoid neoplasm [25]. The mutated lymphocytes proliferate in an abnormal way and accumulate within specific sections of the lymphatic system, losing their infection-fighting ability [26].

Multiple therapeutic options are available for the management of BCs, including radiotherapy, chemotherapy, targeted therapy, immunotherapy, and chimeric antigen receptor (CAR)-T cell therapy (as summarized in Table 1). Nowadays, treatment consists of combinations of multiple agents, including chemotherapy, proteasome inhibition, immunomodulation, and/or monoclonal antibodies [27]. Unfortunately, only in a small subset of cases can long-term remission be successfully achieved. Traditional treatments based on radiotherapy and/or chemotherapy present systemic toxicity and off-target effects [28,29]. Moreover, the development of drug resistance resulting in treatment-refractory disease is common and represents the leading cause of mortality in BC patients [30]. The TME in BCs has been suggested to play a fundamental role in driving drug resistance and recurrence, albeit the molecular mechanisms governing this process still need to be elucidated [31]. To date, *in vitro* pre-clinical research on BCs mostly relied on 2D cultures, which intrinsically exclude the microenvironmental niche [32], resulting in the underestimation of the TME role. Three-dimensional *in vitro* cancer models have the potential to reproduce the TME and its complex interactions with cancer cells. Unfortunately, their application has remained mostly confined to solid tumors [33–35], with only a few applications in BCs. Reliable *in vitro* models mimicking BCs may facilitate the investigation of the tumor/TME interactions and the understanding of the mechanisms governing relapse and drug resistance, and may support the design of more efficient therapies. Unfortunately, the complex nature of the stromal environment in lymph nodes, BM, and SLOs, characterized by a

broad variety of cell populations in different differentiation stages [36,37], as well as the characteristics of the tumor cell populations (e.g., suspension growth), have limited the development of 3D models of BCs [32], with only a few attempts reported in the literature.

Table 1. Therapeutic agents currently involved in BCs treatment.

Malignancy Subtype	Therapy	Therapeutic Agent
ALL	Chemotherapy	Vincristine, liposomal Vincristine, Daunorubicin, Doxorubicin, Cytarabine, L-asparaginase, PEG-L-asparaginase, 6-mercaptopurine (6-MP), Methotrexate, Cyclophosphamide, Prednisone, Dexamethasone, Nelarabine [38]
	Targeted therapy	Imatinib, Dasatinib, Nilotinib, Ponatinib, Bosutinib [39]
	Immunotherapy	Anti-CD20 Ab (Rituximab, Ofatumumab), Anti-CD22 Ab (Inotuzumab ozogamicin), Anti-CD19 Ab (Blinatumomab) [40–45]
	CAR-T cells	Anti-CD19 CAR-T cells Anti-CD19/CD22 CAR-T cells [46–50]
CLL	Chemotherapy	Fludarabine, Pentostatin, Cladribine Chlorambucil, Bendamustine Cyclophosphamide, Prednisone, Methylprednisolone, Dexamethasone [51]
	Targeted therapy	Ibrutinib, Acalabrutinib, Zanubrutinib, Pirtobrutinib, Idelalisib, Duvelisib, Venetoclax [52]
	Immunotherapy	Anti-CD54 Ab (Alemtuzumab) Anti-CD20 Ab (Obinutuzumab, Ofatumumab, Rituximab) [53]
	CAR-T cells	Anti-CD19 CAR-T cells, Anti-CD19/ Anti-CD20 CAR-T cells [54,55]
AML	Chemotherapy	Cytarabine, Daunorubicin, Idarubicin, Cladribine, Fludarabine, Mitoxantrone, Etoposide, Hydroxyurea, Prednisone, Dexamethasone, Methotrexate, 6-mercaptopurine, Azacitidine, Decitabine, Liposomal daunorubicin, Cytarabine [56]
	Targeted therapy	Midostaurin, Quizartinib, Gilteritinib, Ivosidenib, Olutasidenib, Enasidenib, Venetoclax, Glasdegib [57]
	Immunotherapy	Anti-CD33 Ab (Gemtuzumab ozogamicin) [58]
	CAR-T cells	Anti-CD33 CAR-T-cell [59]
CML	Chemotherapy	Hydroxyurea, Methotrexate, Thioguanine, Chlorambucil, Cisplatin, Cyclophosphamide, Mechlorethamine, Etoposide [60]
	Targeted therapy	Imatinib, Dasatinib, Nilotinib, Bosutinib, Ponatinib, Asciminib [61]
	Immunotherapy	Anti-CD20 Ab (Rituximab) [62,63]
	CAR-T cells	Anti-IL-1RAP CAR T-cells [64]
MM	Chemotherapy	Cyclophosphamide, Etoposide, Doxorubicin, Liposomal doxorubicin, Melphalan, Bendamustine [65] Pomalidomide [66]
	Targeted therapy	Lenalidomide, Carfilzomib, Bortezomib [65]
	Immunotherapy	Anti-CD38 (Daratumumab, Isatuximab) Anti-SLAMF7 Ab (Elotuzumab) [65] Anti-BCMA (Elranatamab, Teclistamab) [67] Anti-GPRC5D (Talquetamab) [68]
	CAR-T cells	Anti-BCMA CAR-T-cell Anti-CD19 CAR-T-cell [69,70]

Table 1. Cont.

Malignancy Subtype	Therapy	Therapeutic Agent
HL	Chemotherapy	Bleomycin, Doxorubicin, Cytarabine, Cyclophosphamide, Dacarbazine, Mechlorethamine, Procarbazine, Prednisone, Etoposide, Vinblastine, Vincristine [71]
	Immunotherapy	Anti-CD30 Ab (Brentuximab vedotin) Anti-CD20 Ab (Rituximab) [72] Anti-PD-1 (Nivolumab) [73]
	CAR-T cells	Anti-CD30 CAR-T-cell [74,75]
nHL	Chemotherapy	Cyclophosphamide, Chlorambucil, Bendamustine, Ifosfamide, Prednisone, Dexamethasone, Cisplatin, Carboplatin, Oxaliplatin, Fludarabine, Pentostatin, Cladribine, Cytarabine, Gemcitabine, Methotrexate, Pralatrexate,, Liposomal doxorubicin, Vincristine, Mitoxantrone, Etoposide (VP-16), Bleomycin [76]
	Targeted therapy	Idelalisib, Bortezomib, Belinostat, Ibrutinib, Acalabrutinib, Zanubrutinib, Pirtobrutinib, Duvelisib, Tazemetostat, Selinexor [77]
	Immunotherapy	Anti-CD30 Ab (Brentuximab vedotin), Anti-CD20 Ab (Obinutuzumab, Rituximab, Ofatumumab), Anti-CD79b Ab (Polatuzumab vedotin) Anti-CD52 Ab (Alemtuzumab), Anti-CD19 Ab (Loncastuximab tesirine) Bispecific Ab (Mosunetuzumab, Epcoritamab, Glofitamab) [78]
	CAR-T cells	Anti-CD19 CAR-T-cell [78]

In this scenario, this review aims at providing an updated overview of the current landscape of in vitro models of haematological tumors, highlighting the main desired features and constraints, with the aim of encouraging new research in this largely unexplored field.

2. The Tumor Microenvironment in BC

The complex interactions between stromal cells and HPSCs govern different physiological and pathological mechanisms, such as haematopoiesis, cell survival, and cell function. These interactions occur in unique microenvironments which are characteristic of the tissue and, in BCs, of the specific disease subtype. Thus, the TME can be considered a therapeutic target due to its influence on malignant evolution and drug resistance [79]. For instance, HSPCs reside in the BM microenvironment, commonly referred to as “niches”, composed by different cell populations, including mesenchymal stem cells (MSCs), endothelial cells, sympathetic nerves, and non-myelinating Schwann cells [80]. In BCs, cancer cells and cancer-associated stem cells alter this complex microenvironment, hindering physiological haematopoiesis [81]. Therefore, understanding the composition and key features of each pathological niche is fundamental for the design of reliable in vitro models of BCs and to identify the key aspects governing malignancy, treatment response, and relapse.

2.1. The Bone Marrow Microenvironment

The BM is a soft tissue that fills the cavities within bones and consists of different cell types, such as immune cells, osteoblasts, osteoclasts, osteocytes, MSCs, fibroblasts, stromal cells, and vascular endothelial cells (Figure 1A) [82]. The ECM is well-vascularized and is mainly composed of fibronectin, collagen I, II, III, IV, and X, laminin, tenascin, thrombospondin, and elastin [83]. In physiological conditions, the BM microenvironment is known to influence HPSCs’ fate, for instance, through interactions with the stromal cell population [84–87]. Two main niches can be identified in the BM: the endosteal, or osteoblastic, niche and the vascular, or sinusoidal, niche [88]. The endosteal niche includes osteoblasts and osteoclasts, while the vascular niche is composed by the sinusoids, a mi-

crovascular network through which the bloodstream interacts with the BM [89]. In the niches, non-hematopoietic cells interact with HPSCs through the secretion of cytokines, chemokines, and other soluble factors, governing the proliferation, differentiation, adhesion, and quiescence of HPSCs [90,91]. For example, the hypoxic microenvironment in the endosteal niche maintains the HPSCs in a quiescent state, while the vascular niche supports proliferating and differentiating progenitor cells to form the hematopoietic cell populations [92].

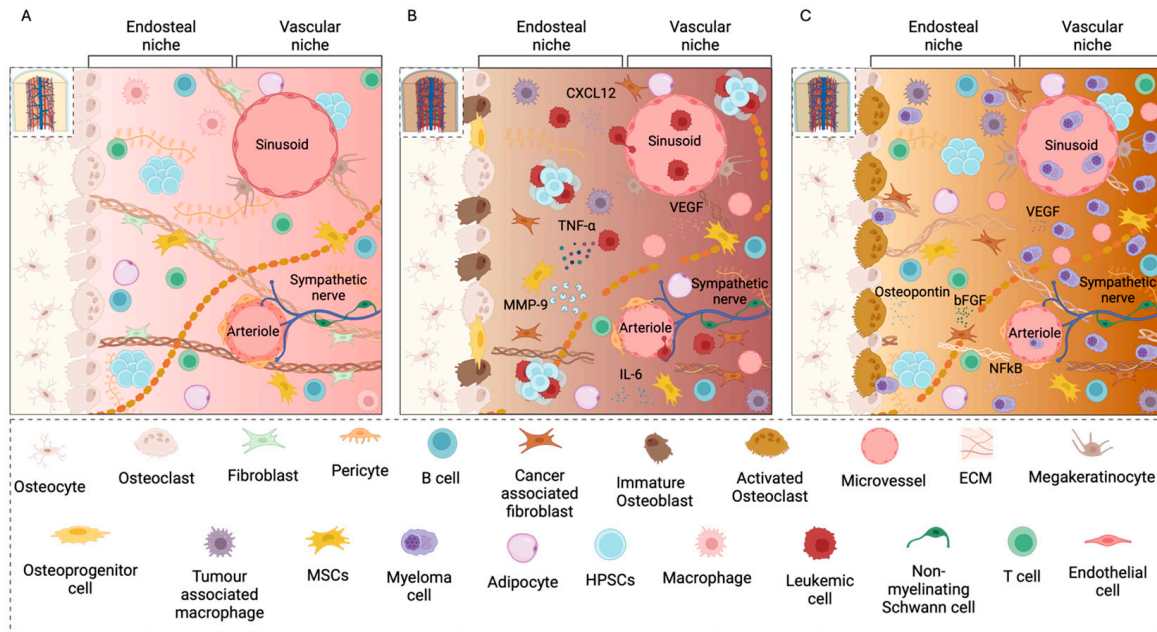


Figure 1. Schematic representation of BM in physiological condition (A) and affected by leukaemia (B), and multiple myeloma BM (C) microenvironment. [Created in BioRender. Mattu, C. <https://BioRender.com/l65m769> (accessed on 19 December 2024)].

In BCs, the BM structure and composition are affected in different ways depending on the tumor subtype [93,94]. For instance, in leukaemia (Figure 1B) the altered balance between bone formation and resorption in the osteoblastic niche leads to bone loss [95] and to deficient bone mineralization [96,97]. The vascular niche is also altered in leukaemia. It has been shown that endothelial cells and leukemic cells interact through autocrine and paracrine stimuli, leading to the attachment of tumor cells to the endothelium [98]. This behaviour allows the migration of leukemic stem cells within the vascular network, and, consequently, the metastatic development. Deregulated angiogenesis is another characteristic aspect of the leukaemia microenvironment, with new blood vessel formation being fundamental for the progression of this pathology. Indeed, the micro vessel density in the BM has been identified as a prognostic marker in leukaemia [99]. The ECM also plays a crucial role in leukaemia development and progression [100]. In ALL, B-cells and leukemic cells secrete tumor necrosis factor α (TNF- α), leading to an increased production of matrix metalloproteinase 9 (MMP-9) by MSCs, resulting in ECM degradation, and, ultimately, in local invasion by leukemic cells [101]. In AML, the interactions between type-I Collagen and $\alpha 2\beta 1$ integrins protect leukemic cells from drug-induced apoptosis, confirming the fundamental role of the ECM in driving chemotherapy resistance [102].

In MM, the BM microenvironment (Figure 1C) plays a crucial role in the progression of MM and in the response to therapeutic agents by facilitating immune escape and supporting tumor proliferation [103–106]. Malignant MM cells can locally modify the BM niche by altering the secretion of cytokines and exosomes, creating a growth-supporting environ-

ment which stimulates metastatic dissemination [107,108]. Typically, MM cells adhere to the endosteal niche, which maintains them in a quiescence state. Patients affected by MM often display a severe imbalance between osteoblasts and osteoclasts [109–111]. Indeed, remodeling of the niche by osteoclasts interrupts quiescence and causes the reactivation of MM cells and their migration away from the niche [112,113]. Interaction between MM cells and MSCs is fundamental during this process, as it triggers the release of pro-osteoclastogenic factors, such as proinflammatory cytokines (IL-6) and osteoclastogenic factors (such as RANKL) that activate osteoclasts and suppress osteoblasts [12,114,115]. Moreover, osteoclasts release osteopontin, a proangiogenic factor, which cooperates with vascular endothelial growth factor (VEGF) and basic fibroblast growth factor (bFGF), secreted by MM cells and BM stromal cells, to enhance angiogenesis in the BM microenvironment [116–118]. CD138 and VLA-4 expressed by MM cells facilitate their interaction with ECM proteins, such as collagen type-I and fibronectin. This interaction triggers the activation of the nuclear factor kappa-light-chain-enhancer of activated B-cells (NFkB), which induces MM cell proliferation and adhesion-mediated drug resistance [119,120].

In summary, the BM microenvironment in BCs is characterized by an altered equilibrium between osteoblasts and osteoclasts, an enhanced secretion of angiogenic factors and inflammatory cytokines, and an altered ECM structure and composition. These alterations play a key role in tumor growth, invasion, and in the development of drug resistance, confirming the importance of the TME in the development and progression of haematological malignancies [121].

2.2. The Microenvironment of Secondary Lymphoid Organs

SLOs comprise lymph nodes, the spleen, Peyer's patches, and other mucosal tissues, such as nasal-associated lymphoid tissue, adenoids, and tonsils. Each SLO is constituted by a complex network of stromal cells, which are unique to the tissue, along with blood and lymphatic endothelial structures and distinct B-cells and T-cells zones (Figure 2A) [122]. The microenvironment interacts with B- and T-cells, supporting their survival and enabling them to proceed to a different SLO, when an antigen is not identified. Conversely, when B- and T-cells recognize a specific antigen, the microenvironment in SLOs supports their activation and proliferation [37]. Peripheral lymphoid tissues are composed of two types of ECM, which differ in terms of morphology and biochemical signaling, namely the interstitial matrix and the basement membrane. The interstitial matrix supports the interaction between fibroblastic reticular cells and is mainly constituted by collagen I, III, V, and XI, proteoglycans and glycoproteins, such as fibronectin, tenascin, and vitronectin [123]. The basement membrane separates the different functional compartments of the organ, and is composed of collagen IV, laminins, heparan sulphate proteoglycans, and glycoproteins [124]. The lymphoid compartments are connected to the peripheral sites through the conduit system, which support the transport of chemokines and cytokines and allow lymphocyte locomotion inside the SLOs [125,126].

SLOs are involved in the initiation, proliferation, and spreading of HL and nHL [127–129]. The TME composition is extremely variable depending on the subtype of BC. For instance, in HL and in some T-cell lymphomas, tumor cells, namely Reed-Sternberg cells, represent only a small percentage of the tumor mass, while the majority is constituted by non-tumoral cells (Figure 2B). In B-cell lymphomas, the proportion of non-tumoral cells is significantly reduced (Figure 2C) [130]. Immune cells play a crucial role in lymphoma progression, by assuming either pro- or anti-oncogenic phenotypes depending on the signals from the surrounding microenvironment. Macrophages, dendritic cells, eosinophils, and tumor-infiltrated lymphocytes are generally involved in tumor control, while myeloid-derived suppressor cells, mast cells, regulatory T-cells, and tumor-associated macrophages (TAMs)

are implicated in immunosuppressing mechanisms [131]. The ECM composition is also affected by tumor progression. Neoplastic and stromal cells may produce new ECM components, essential for tumor–stroma interactions and tumor proliferation [132]. For instance, SPARC (secreted protein acidic rich in cysteine) and osteopontin are non-structural ECM proteins which play a crucial role in supporting tumor growth and invasion, e.g., by regulating ECM degradation, and are often deregulated in BC [133–136].

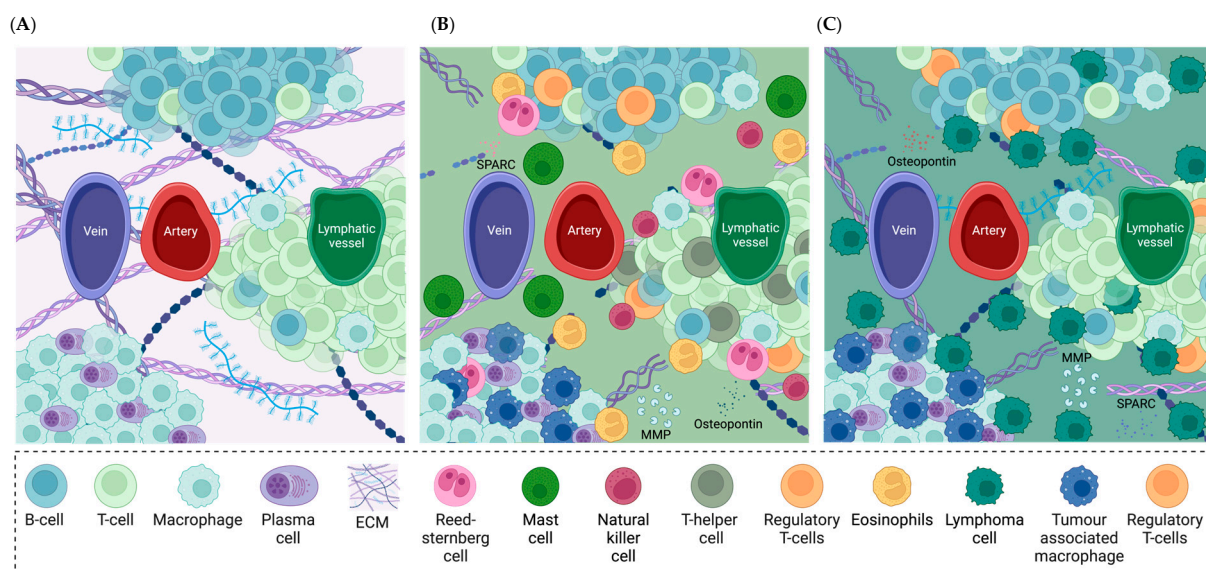


Figure 2. Schematic representation of lymph node microenvironment composition in physiological conditions (A), in Hodgkin's lymphoma (B), and in non-Hodgkin's lymphoma (C). [Created in BioRender. Mattu, C. <https://BioRender.com/k93w241> (accessed on 19 December 2024)].

In summary, SLOs' microenvironment in BCs, characterized by the presence of tumor-infiltrating immune cells and by the increased secretion of non-structural proteins, is a key player in supporting cell migration and tumor growth, representing a potential therapeutic target that should not be overlooked.

3. In Vitro Models of BCs

As discussed above, the TME in BCs plays an active role in supporting tumor progression, metastatic dissemination, and in orchestrating treatment response. The microenvironment of both BM and SLOs, presents pathology-specific alterations which lead to variations in the ECM structure and composition, enhanced secretion of angiogenic factors and inflammatory cytokines, and migration and proliferation of stromal cells and immune cells. These alterations facilitate tumor growth, invasion, and drug resistance, highlighting the importance of the TME in the development and progression of haematological malignancies [121,137]. Therefore, the complex interactions between cancer cells and other cellular and non-cellular components of the TME should be considered to fully unravel the mechanisms underlying BC development and to design new therapeutic options. Unfortunately, in vitro studies are still mostly based on conventional 2D cell cultures, which fall short of replicating the crucial dynamics, architectural features, and the composition of the TME [94,138]. Models based on spheroids and organoids are widely used to study haematological malignancies [139,140], as they allow for the reproduction of connections among cells in a tridimensional environment in an easy and reproducible fashion. [141] However, organoid-based models are costly and often require a long maturation time. Moreover, the absence of immune and stromal components and blood vessels limits their ability to faithfully replicate the microenvironment in BCs [142]. More complex 3D systems,

presented in Figure 3, have the potential to more faithfully mimic cell/TME interactions and to replicate cell colonization and proliferation within niches, therefore facilitating the identification and evaluation of potential therapeutic targets and enhancing the understanding of BC pathophysiology and recurrence [137,143]. The development of representative 3D in vitro models of BCs is extremely challenging, since different aspects, such as chemical and biochemical stimuli (e.g., calcium concentration, oxygen concentration, growth factors release), heterogeneous cell populations, topographic and mechanical properties of the niches, and the presence of the vascular network, should be considered simultaneously [36]. Moreover, the ex vivo culture of HPSC strictly depends on the physical and biochemical properties of the substrate in which the cells are grown, and on the presence of other cell populations in co-culture, as well as on environmental stimuli, such as hypoxia [144].

The following paragraphs report examples of the recent 3D in vitro models of different BC subtypes, highlighting their advancements over traditional 2D cultures and discussing their limitations.

3.1. Leukaemia In Vitro Models

Challenges in the development of in vitro models of leukaemia include the presence of different niches and the heterogeneity of the cell populations composing the niches [145], the presence of leukaemia-associated stem cells [146], and the complex interactions between leukaemia cells and other cell types, including endothelial cells [147], MSCs [148], and immune cells [149], and between leukaemia cells and the ECM [150]. For example, in acute leukaemias, the crosstalk between tumor cells and the vascular endothelium actively contributes to pathology progression and to the development of drug resistance [151], while MSCs are known to orchestrate the interactions between cancer cells and other cells in the TME, controlling the behaviour of leukemic cells [152,153]. The accumulation of B-lymphocytes is another key feature of BCs. Indeed, B-cell infiltration in CLL has been associated with pathology progression and with the development of drug resistance [154,155]. An additional challenge in designing leukaemia models is represented by the different composition and morphological features of the niches, which depend on the pathology subtype.

Few attempts have been made to replicate leukaemia in vitro. Some models exploit non-contact interactions (e.g., by using trans-well inserts) among two or more cell types [156], and others are based on the co-culture of two or more cell types inside porous scaffolds or 3D hydrogels that may include ECM proteins and exploit the self-assembly ability of the cells to obtain different compartments [151,157,158]. More recent approaches harness microfluidics [159] or 3D-printing technologies to reproduce some of the morphological features of the microenvironment, together with a controlled spatial positioning of the different cell types [160].

For instance, Torres-Barrera et al. [156] used a co-culture model to investigate the role of the BM endothelium in regulating the quiescence and proliferation of leukaemia-associated stem cells (LSCs) in CML. To this aim, primary human CML stem cells (Lin-CD34+) were cultured for up to 72 h with or without direct contact with normal endothelial cells. When endothelial cells were co-cultured with CML cells, either in direct or indirect contact, proliferation of CML cells was observed, with an increase in the cell number of 110%–170% as compared to the initial count. On the other hand, in control cultures without endothelial cells, a reduction in the number of CML cells was noted. Similarly, culturing CML progenitor cells in contact with endothelial cells produced an increase of nearly 20% in the cell count. The number of colony-forming cells remained constant when leukemic cells were cultured in direct contact with endothelial cells, while the number of colony-forming cells decreased by 50% in co-culture without contact and by 83% in control cultures with basal medium alone. These data suggested that direct contact with

endothelial cells is essential for the maintenance of the CML progenitors and stem cells. Moreover, after 72 h of co-culture with endothelial cells, two different populations of hematopoietic cells were identified: one population adhering to the endothelial layer (15.9%) and a second population which remained in suspension (84%). Analysis of the cell phenotype indicated that among the adherent population, the percentage of stem, progenitor, and mature cells was 16%, 61%, and 22%, respectively. In the floating cells, the percentage of stem, progenitor, and mature cells was 9%, 74%, and 17%, respectively. The work suggested that direct contact co-culture with endothelial cells is essential for the regulation of haematopoiesis and that the microenvironment produced by endothelial cells may facilitate the maintenance of primitive CML cells in a quiescent state.

Svozilová and co-workers [158] proposed a biocompatible polymer hydrogel functionalized with the Arg-Gly-Asp-Ser (RGDS) peptide to co-culture CLL cells together with BM stromal cells. They observed that the scaffold culture could maintain physiological cell morphology and that BM stromal cells and CLL cell lines were metabolically active for up to 70 days in the hydrogel, while patient-derived CLL cells had a significantly lower survival of only 4 days.

Using a similar hydrogel-based approach, Bray et al. [151] developed a hydrogel-based 3D system including the vascular niche, to mimic the interactions between leukemic cells and endothelial cells and understand their role in pathology progression and drug resistance in AML. In detail, they developed a triculture system of endothelial cells (HUVECs), MSCs, and different leukaemia cell lines or primary leukaemia cells from AML patients (pAML) in an RGD-modified poly (ethylene glycol) (PEG)-heparin hydrogel [161,162]. The three cell populations were seeded within the matrix, using a three-to-six-fold higher endothelial cell concentration and a ten-fold lower MSCs concentration in comparison to AML cells. Growth factors (namely, VEGF, fibroblast growth factor 2, and stromal cell-derived factor 1) were added to induce the development of an endothelial cell capillary network within the gels. Interestingly, they observed that all tested AML cell lines were mainly localized in the proximity of the HUVEC-MSCs vascular network, suggesting that the co-culture system may replicate the supportive role played by the endothelial network in mediating adhesion and proliferation of AML cells. This confinement was confirmed also with primary AML cells, albeit with a lower proliferation rate. The effect of this dynamic interactions between AML cells and the vascular network on drug resistance was investigated after treatment with Daunorubicin. As expected, drug cytotoxicity was significantly higher in 2D cultures and in 3D monocultures, in comparison to the three-culture system (with a 2.5-to-30-fold increase, depending on the cell line and the testing conditions), suggesting that complex in vitro models may better recapitulate drug response. Treatment with a CXC chemokine receptor type 4 (CXCR4) inhibitor, which has been suggested to block the CXCR4/CXCR12 axis involved in AML cells protection by stromal cells, was also tested [163,164]. To investigate this aspect, the authors administered the CXCR4 antagonist AMD3100 to the AML cells in the model. They found that administration of the CXCR4 antagonist significantly reduced contact between the endothelial cells and AML cells, both for AML cell lines and for primary AML cells, replicating the expected behaviour of the molecule.

In a different work, Ma et al. [159] designed a microfluidic leukaemia-on-a-chip model simulating the ALL niche in the BM to study the interactions between ALL cells and the BM microenvironment [165]. The model included a central venous sinus, representing the medullary cavity, and endosteal regions connected to medium reservoirs to continuously provide nutrients to the cells. The chip design, with its different compartments, allowed communication between tumor cells and TME cells, reproducing the TME role in supporting ALL cells proliferation and drug resistance.

Two different ALL cell lines with favorable and poor treatment response (i.e., REH and SUP) were seeded within the microfluidic device in combination with endothelial cells (HUVECs), MSCs, and human osteoblasts (hFOB 1.19). In detail, ALL cells were cultured in the central area of the device, the BM niche cells (endothelial cells and MSCs) were seeded in the central ring, and the human osteoblasts in the outer ring, mimicking the endosteal region, connected with four reservoirs for medium supply. Periodic cytokine quantification indicated the increased secretion of CCL2, CCL5, interleukin (IL)-6, and IL-8 with increasing ALL cell proliferation for both cell lines, as well as incremented NF- κ B signaling, which was further enhanced in co-culture with the BM niche cells. Time lapse imaging highlighted the movement of endothelial cells towards the central region, confirming their attraction towards the tumor cells. The model was also used to investigate the interactions between the chemokine CXCL12 and its receptor CXCR4, which is implicated in leukaemia progression [166]. They observed that ALL cells in co-culture with BM niche cells expressed a higher amount of CXCR4 in comparison to the same cells in single culture, confirming that the interactions between ALL and BM niche cells is implicated in CXCL12/CXCR4 signalling. Moreover, the interactions between ALL cells and hFOB seeded in the outer region of the chip was analysed to investigate the role of the endosteal niche in regulating pathology progression. In the presence of ALL cells, secretion of osteopontin by osteoblasts was reduced, suggesting an effect of leukaemia cells on the differentiation and maturation of hFOB. The authors reported a higher content of p21⁺ ALL cells in the endosteal niche in comparison to the perivascular niche. Since p21 indicates dormant ALL cells, these findings confirmed that osteoblasts are involved in maintaining quiescence of ALL cells. Different therapies used to treat ALL were also tested in the model, namely prednisone (PRE), vincristine (VCR), and nilotinib (NIL). ALL cells in single culture displayed a higher sensitivity to all the tested agents, confirming the essential influence of the microenvironment on treatment response. SUP cells, which are obtained from a drug refractory ALL, showed higher resistance in comparison to REH cells in the model, confirming that drug resistance is maintained in 3D cultures.

To investigate the influence of the TME in the progression of CLL, Barboglio et al. [157] proposed a scaffold-based 3D system mimicking the homing and migration phase in CLL in response to treatment administration. Specifically, the authors designed a 3D model of the BM microenvironment, using a SpongostanTM scaffold, inserted into a rotating bioreactor to enable the interaction between CLL and BM stromal cells. The scaffold was first seeded with a BM stromal cell line (HS5), followed by the addition of GFP-labeled CLL cells (GFP-MEC1) under rotating conditions [167]. They observed that the amount of CLL cells within the scaffold was significantly higher when CLL cells were co-cultured with stromal cells in comparison to CLL cells in single culture, confirming the role of BM stromal cells in sustaining CLL infiltration and proliferation. They also evaluated the expression of the hematopoietic lineage cell-specific protein 1 (HS1) [168] in CLL cells cultured in the BM microenvironment model. To this aim, genetically modified CLL cells with reduced expression of HS1 were co-cultured with wild type cells with high HS1 expression in the BM microenvironment model. The authors observed that wild type cells were mostly located outside the scaffold and that most of the cells in the scaffold had low HS1 expression, suggesting a better BM-homing ability for cells of low HS1 expression. Using patient-derived CLL cells from six different patients, the authors found that HS1 expression varied depending on the tissue from which the cells were obtained, with cells derived from BM showing lower HS1 expression in comparison to cells obtained from the peripheral blood of the same patient. These results suggested that the tissue-specific microenvironment controls protein expression in CLL cells, and that the *in vitro* BM scaffold model was able to reproduce this behaviour. The authors also investigated the response to the BTK inhibitor

(ibrutinib) treatment in the model and found that both CLL cell line and primary CLL cells migrated outside the scaffold after treatment to a much higher extent than the untreated control, confirming that drug treatment influences cell mobilization [169].

3.2. Multiple Myeloma In Vitro Models

MM predominantly develops within the BM niche, where MM cells establish close interactions with the ECM, leading to the generation of signals promoting cell survival and inhibiting apoptosis [170,171]. The BM microenvironment, composed of hematopoietic cells, non-hematopoietic cells, and non-cellular components is essential for the development of specialized niches which actively contribute to MM growth and to the development of drug resistance [172]. To date, efforts to expand primary MM cells outside their BM microenvironment have largely failed [173], confirming the importance of the BM niche in supporting MM proliferation and survival.

Given the importance of the TME, the reported MM models often include non-cellular components of the tissue ECM, such as ECM proteins, either as coating on polymer scaffolds or as components of hydrogels in which cells are embedded. Most models also strive to replicate the interactions between MM cells and MSCs, either by simple co-culture or by exploiting more complex culture conditions, such as 3D structures and dynamic systems [167,170,174–179].

Trujillo et al. [180] developed an innovative 3D platform based on semi-solid culture to model the MM microenvironment. The model is a dynamic suspension of polymer microspheres coated with hyaluronic acid (HA) or fibronectin, two non-cellular components of the BM ECM [181,182], implicated in MM cells adhesion and in their consequent evolution into drug resistant cells [183]. The microspheres were incubated with three different MM non-adherent cells, namely RPMI8226, U226, and MM1.S, on spinning plates to create a dynamic environment compatible with the suspension-culture conditions required for MM cells. The cells, cultured in this dynamic environment or in traditional suspension culture, were treated with Dexamethasone or with Bortezomib, two common chemotherapeutic agents in MM [184,185]. The authors found an up to 20-fold increase in the proliferation rate of cells after treatment with Bortezomib, indicative of drug resistance, for the cells cultured in the dynamic model. On the contrary, no indications of drug resistance were observed in suspension cells, suggesting that a dynamic environment including ECM proteins may better replicate the interactions between MM cells and the TME which bring to the development of drug-refractory phenotypes.

Ferrarini et al. [186] used a Rotary Cell Culture System (RCCS™) Bioreactor to culture MM specimens *ex vivo*. The authors were able to maintain MM explants for up to 14 days within the bioreactor, reporting the presence of the different components of MM TME, such as MM cells and arterioles, and preservation of the native tissue architecture. The authors also found that patient samples in the RCCS bioreactor maintained the original sensitivity to proteasome inhibition treatment, confirming the applicability of the model in drug evaluation and screening.

Spelat et al. [187] used a different approach to maintain MM cells in co-culture with MSCs. In detail, they embedded MSCs into a thermo-responsive polymer hydrogel of poly(glycerol monomethacrylate)-block-poly-(2-hydroxypropyl methacrylate). Using a trans-well insert, the hydrogel loaded with MSCs was placed in a cell culture plate containing MM cells in suspension. Interestingly, the authors observed a significant over-expression of the chemokine receptor CX3CR1, which is known to mediate the interactions between MM and BM cells that favor cell survival and disease progression [188]. They also reported an upregulation of IL-6 and IL-10, which was correlated with an increment in MM cells proliferation, only in co-culture with MSCs.

Recently, Wu et al. [171] proposed coaxial extrusion 3D bioprinting, to develop canular constructs mimicking the BM cavity. The construct presented a hollow structure surrounded by a shell, mimicking the cortical bone, while MM cells (MM1S cell line) were printed in the core, alone or in combination with HS5 stromal cells, using a bioink composed of a blend of gelatin methacryloyl, alginate, polyethylene glycol-diacrylate, and nano-hydroxyapatite. Treatment response was analyzed by treating the 3D model with BTZ for 24 h. The authors reported significantly higher IC50 values of BTZ for MM cells in 3D co-culture with stromal cells, in comparison with 2D culture and with the 3D model hosting only MM cells, with a 3-fold and a 1.7-fold increase, respectively. They also observed that MM cells in the co-culture group showed aggregation following BTZ treatment. Co-administration of tocilizumab (TOC) to reduce cell adhesion was found to significantly improve BTZ treatment [189,190], highlighting the potential of this model as a screening for combinatorial therapeutic options. Moreover, the authors were able to maintain patient-derived MM cells for up to 7 days in the model, while survival in traditional 2D culture did not exceed 5 days [191].

3.3. Lymphoma In Vitro Models

As mentioned above, lymphomas include HL and NHL, which have different characteristic hallmarks. HL is characterized by the degradation of the lymph node structure caused by the presence of mutated B-cells, namely Hodgkin and Reed–Sternberg cells, which lead to defective immunoglobulin expression, and to the development of an inflammatory TME. HL cells constitute less than 1% of the total cell population while most cells are non-malignant reactive immune cells, which have been suggested to support HL progression [192].

NHLs arise from the genetic alteration of B-lymphocytes (86% of all NHL), T- cells, or NK-cells (14% of all NHL) [193]. Recent findings highlighted the key role of TME in NHL pathogenesis. Indeed, non-tumoral cells, such as immune cells, stromal cells, blood vessels, and extracellular components [194], together with cancer cells create a dynamic microenvironment that triggers tumor initiation, survival, proliferation, immune escape, and drug resistance [195–198]. For example, MSCs in the BM are known to interact with NHL cells, promoting an anti-inflammatory and immunosuppressive microenvironment that leads to cancer cell proliferation and to drug resistance [199,200].

Only a few models of HL and NHL have been developed to date, because of the difficulty of recreating such dynamic interplay among cells in the TME, as well as because of technical issues correlated with the poor survival of most cell types in vitro and to the co-culture conditions [201].

Bahlmann et al. [202] developed an in vitro model of HL that included TAMs, a fundamental immune component of the TME. To mimic the composition of the HL ECM, the authors developed a biomimetic cryogel composed of hyaluronan, gelatin, and fibronectin conjugated with adhesive peptides to facilitate TAMs invasion. The tendency of TAMs to invade the cryogel was investigated in co-culture with Reed–Sternberg cells or in culture with their conditioned medium. The authors observed that macrophages were able to invade the hydrogel to a significantly higher extent in co-culture with HL cells or when maintained in HL-conditioned medium, as compared to single TAMs culture in non-conditioned medium. TAMs were also cultured with conditioned medium from six different NHL cell lines, with the observation of a significantly lower gel colonization in comparison to macrophages cultured in HL cells-conditioned medium, confirming the different behavior of these two lymphoma sub-types. TAMs cultured in an HL cells-conditioned medium were treated with 25 therapeutic agents that interfere with HL-TAM communication and their gel colonization behaviour was monitored. The authors were able to identify five compounds

that led to a significant reduction in macrophage colonization, namely the MMPs inhibitors Marimastat and Batimastat, the STAT 6 inhibitor (AS1517499), the P38-MAPK inhibitor (PD-169316), and the JAK1/2 inhibitor Ruxolitinib. The results showed that PD-169316 was most effective in inducing re-polarization of macrophages into a pro-inflammatory phenotype, while AS1517499 and Ruxolitinib significantly reduced the activity of the pro-inflammatory gene TNFA and of the M2-like gene CD206, respectively. As expected, PD-169316 caused a significant reduction of MMPs activity. The HL model, albeit including only two cell types of the TME, enabled the screening of a library of compounds and the identification of their key mechanisms of action, paving the way for the development of more efficient treatments.

Immune system-tumor crosstalk also plays a key role in NHL pathogenesis. Mannino et al. [203] developed an NHL model based on a HA hydrogel containing cancer and immune cells, integrated in a perfusable polydimethylsiloxane (PDMS) construct, which reproduced an endothelialized microchannel to mimic the tumor microvasculature. The channel was coated with mouse lung microvascular endothelial cells under rotation to achieve uniform cell attachment to the inner surface of the channel. VE-cadherin staining confirmed the full endothelialization of the channel. Administration of a model fluorescent antibody via direct injection in the microchannel resulted in antibody extravasation and permeation through the gel. Extravasation was significantly enhanced in the presence of NHL cells, confirming that vessel permeability is affected by cancer cells [204]. The therapeutic anti-CSF-1R antibody, which specifically targets macrophages [205], was also injected in the microchannel, resulting in a significant reduction of macrophage viability (of nearly 50%) in comparison to the untreated control sample.

Ceccato et al. [206] proposed a model of NHL, using human decellularized femoral bone to replicate the BM microenvironment. In detail, decellularized scaffolds were seeded with BM stromal cells (HS-5) using a custom-made PDMS dual-step seeding device that allowed the slow-flowing of the cell suspension within the matrix. They found that NHL cells colonized the decellularized scaffold creating a strong interaction with MSCs and maintaining the expression of specific surface markers (e.g., CD19, CD20, and CD45).

Treatment with Doxorubicin, clinically used for the treatment of DLBC, indicated a significantly lower cytotoxicity of the drug when administered in the model, as compared to drug treatment in traditional 2D cell culture. For instance, Doxorubicin-induced apoptosis on germinal B-cell-derived OCI-LY18 cells decreased from 49.9% + 7.7% in 2D culture to 30.7% + 9.2% in BM ECM model. When HS-5 were added in the BM ECM model, the apoptosis rate of NHL cells further decreased to 27.6% + 7.3%, confirming the importance of the TME in determining drug response.

Recently Mastini et al. [207] used a commercial microfluidic chip (DAX-1, AIM Biotech) to develop a model of the perivascular niche in large cells anaplastic lymphoma. The microfluidic device was composed by two lateral channels, mimicking the blood vessels and a central channel, reproducing the perivascular niche. Endothelial cells (HUVECs) were seeded within the lateral channels with lymphoma cells flowing within the channel.

The authors reported a reduced cytotoxic effect of the tyrosine kinase inhibitor crizotinib on large cells anaplastic lymphoma, when the cells were co-cultured with HUVECs, and they showed that this effect was mediated through the CCL19-21/CCR7 axis. This work confirmed the critical role of the TME in supporting the persistence of large cells anaplastic lymphoma cells after chemotherapy.

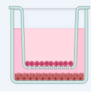
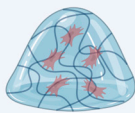
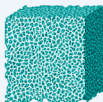

	<i>In vitro</i> model	Pathology	Cell populations	Matrix compositions
Indirect co-culture		Multiple myeloma (MM) [187]	<ul style="list-style-type: none"> Mesenchymal stem cells MM cells 	Poly(glycerol monomethacrylate)-block-poly-(2-hydroxypropyl methacrylate) (PGMA-PHPMA)
Hydrogel-based 3D cell culture		Acute myeloid leukaemia (AML) [151]	<ul style="list-style-type: none"> AML cells Endothelial cells Mesenchymal stem cells 	PEG-heparin functionalized with the receptor ligand peptide (RGD)
		Multiple myeloma (MM) [180,171]	<ul style="list-style-type: none"> MM cells 	Acrylic polymers microspheres functionalized with HA or fibronectin
		Hodgkin's Lymphoma (HL) [202]	<ul style="list-style-type: none"> MM cells BM stromal cells 	Gelatin methacryloyl (GelMA), alginate, polyethylene glycol-diacrylate (PEGDA), nano-hydroxyapatite (nHA)
		Non-Hodgkin's Lymphoma (NHL) [203]	<ul style="list-style-type: none"> HL cells Tumor associated macrophages 	Hyaluronan, gelatin, and fibronectin conjugated with adhesive peptides
Scaffold-based 3D cell culture		Chronic lymphocytic leukaemia (CLL) [157]	<ul style="list-style-type: none"> NHL cells Immune cells Healthy lymph node cells Endothelial cells 	Gelatin, hyaluronic acid
		Non-Hodgkin's Lymphoma (NHL) [206]	<ul style="list-style-type: none"> CLL cells BM stromal cells 	Spongostan™
Microfluidic chip		Acute lymphocytic leukaemia (ALL) [159]	<ul style="list-style-type: none"> NHL cells Mesenchymal stromal cells 	Decellularized femoral bone
		Non-Hodgkin's Lymphoma (NHL) [207]	<ul style="list-style-type: none"> ALL cells Endothelial cells Mesenchymal stromal cells Osteoblasts 	Gelatin
			<ul style="list-style-type: none"> NHL cells Endothelial cells 	Collagen

Figure 3. Representation of the available 3D *in vitro* models of hematological malignancies [Created in BioRender. Mattu, C. (2024) <https://BioRender.com/m25e426> (accessed on 19 December 2024)].

4. Conclusions

In hematological malignancies, TME plays a fundamental role in orchestrating tumor progression and treatment response [208]. Therefore, TME should be considered an active player in the pathogenesis of BCs and an important therapeutic target. Unfortunately, its complex and heterogeneous composition, characterized by the presence of tumor-associated macrophages, endothelial cells, immune infiltrate, and other non-tumoral cell types, as well as of an altered ECM and modified cytokines expression, is hard to replicate *in vitro* [209].

Additional complexities include co-culturing issues associated with medium selection, short *in vitro* survival of some cell types, and non-attachment growth conditions, which are further exacerbated by the differences among BC subtypes.

For these reasons, few attempts have been made to generate complex *in vitro* 3D models of BCs. In this context, this review aims at encouraging engineering and exploitation of these largely unexplored systems, providing an updated overview of the state-of-the-art *in vitro* models of BCs, highlighting the main features of the developed models and identifying technological challenges and knowledge gaps in the field.

The resulting analysis of the literature shows that *in vitro* 3D models of BCs can replicate to some extent the interactions between different BC cells, endothelial cells, immune infiltrate, and stromal cells in the TME, which orchestrate tumor development and treatment response. These models have demonstrated the potential to extend the survival of short-living cells, to deepen the understanding of pathology development, and to offer

reliable drug screening conditions, making them a valid alternative to 2D or 3D BC cells monocultures. The development of BC models may introduce alternative systems for those subtypes that still lack reliable and easy-to-establish animal models, such as tumors arising from central nervous system (CNS) infiltration of BC cells.

Future research should focus on optimizing ECM modeling by better replicating its structure and protein composition, on integrating a functional vascular network, and on including additional cell types to better reflect the complexity of TME. Despite the evident need for further improvements, 3D models represent essential tools for the study of BC, with the ability to unravel the role of TME and to support the development of patient-specific therapies, demonstrating their incontrovertible potential.

Author Contributions: C.M. (Carlotta Mattioda): Writing—original draft. C.V.: Writing—review and editing. G.C.: Writing—review and editing. C.M. (Clara Mattu): Writing—review and editing, Conceptualization. All authors have read and agreed to the published version of the manuscript.

Funding: Carlotta Mattioda acknowledges PON “Ricerca e Innovazione” 2014–2020 Azione IV.R “dottorati su tematiche green” for co-financing her Ph.D scholarship. Claudia Voena has received funding from AIRC under IG 2019–ID. 23146.

Data Availability Statement: No new data were created or analyzed in this study. Data sharing is not applicable to this article.

Conflicts of Interest: The authors declare no conflicts of interest.

References

- Hani, U.; Gowda, B.H.J.; Haider, N.; Ramesh, K.; Paul, K.; Ashique, S.; Ahmed, M.G.; Narayana, S.; Mohanto, S.; Kesharwani, P. Nanoparticle-Based Approaches for Treatment of Hematological Malignancies: A Comprehensive Review. *AAPS PharmSciTech* **2023**, *24*, 233. [[CrossRef](#)]
- Sung, H.; Ferlay, J.; Siegel, R.L.; Laversanne, M.; Soerjomataram, I.; Jemal, A.; Bray, F. Global Cancer Statistics 2020: GLOBOCAN Estimates of Incidence and Mortality Worldwide for 36 Cancers in 185 Countries. *CA Cancer J. Clin.* **2021**, *71*, 209–249. [[CrossRef](#)]
- Hazan-Halevy, I.; Landesman-Milo, D.; Rosenblum, D.; Mizrahy, S.; Ng, B.D.; Peer, D. Immunomodulation of Hematological Malignancies Using Oligonucleotides Based-Nanomedicines. *J. Control. Release* **2016**, *244*, 149–156. [[CrossRef](#)] [[PubMed](#)]
- Brown, G. Oncogenes and the Origins of Leukemias. *Int. J. Mol. Sci.* **2022**, *23*, 2293. [[CrossRef](#)]
- Bain, B.J.; Estcourt, L. FAB Classification of Leukemia. In *Brenner’s Encyclopedia of Genetics*, 2nd ed.; Academic Press: Cambridge, MA, USA, 2013; pp. 5–7. [[CrossRef](#)]
- Cowan, A.J.; Green, D.J.; Kwok, M.; Lee, S.; Coffey, D.G.; Holmberg, L.A.; Tuazon, S.; Gopal, A.K.; Libby, E.N. Diagnosis and Management of Multiple Myeloma. *JAMA* **2022**, *327*, 464. [[CrossRef](#)] [[PubMed](#)]
- Joshua, D.E.; Bryant, C.; Dix, C.; Gibson, J.; Ho, J. Biology and Therapy of Multiple Myeloma. *Med. J. Aust.* **2019**, *210*, 375–380. [[CrossRef](#)]
- Bird, S.A.; Boyd, K. Multiple Myeloma: An Overview of Management. *Palliat. Care Soc. Pract.* **2019**, *13*, 117822421986823. [[CrossRef](#)] [[PubMed](#)]
- Mitsiades, C.S.; Mitsiades, N.; Munshi, N.C.; Anderson, K.C. Focus on Multiple Myeloma. *Cancer Cell* **2004**, *6*, 439–444. [[CrossRef](#)] [[PubMed](#)]
- Hideshima, T.; Anderson, K.C. Molecular Mechanisms of Novel Therapeutic Approaches for Multiple Myeloma. *Nat. Rev. Cancer* **2002**, *2*, 927–937. [[CrossRef](#)]
- Jagannath, S. Pathophysiological Underpinnings of Multiple Myeloma Progression. *J. Manag. Care Pharm.* **2015**, *14*, 7–11. [[CrossRef](#)] [[PubMed](#)]
- Garcia-Gomez, A.; Sanchez-Guijo, F.; del Cañizo, M.C.; Miguel, J.F.S.; Garayoa, M. Multiple Myeloma Mesenchymal Stromal Cells: Contribution to Myeloma Bone Disease and Therapeutics. *World J. Stem Cells* **2014**, *6*, 322–343. [[CrossRef](#)] [[PubMed](#)]
- Pellat-Deceunynck, C.; Bataille, R. Normal and Malignant Human Plasma Cells: Proliferation, Differentiation, and Expansions in Relation to CD45 Expression. *Blood Cells Mol. Dis.* **2004**, *32*, 293–301. [[CrossRef](#)]
- Rodriguez-Abreu, D.; Bordoni, A.; Zucca, E. Epidemiology of Hematological Malignancies. *Ann. Oncol.* **2007**, *18*, i3–i8. [[CrossRef](#)]
- Bispo, J.A.B.; Pinheiro, P.S.; Kobetz, E.K. Epidemiology and Etiology of Leukemia and Lymphoma. *Cold Spring Harb. Perspect. Med.* **2020**, *10*, a034819. [[CrossRef](#)]

16. Kelly, K.M. Hodgkin Lymphoma in Children and Adolescents: Improving the Therapeutic Index. *Blood* **2015**, *126*, 2452–2458. [CrossRef]
17. Munir, F.; Hardit, V.; Sheikh, I.N.; AlQahtani, S.; He, J.; Cuglievan, B.; Hosing, C.; Tewari, P.; Khazal, S. Classical Hodgkin Lymphoma: From Past to Future—A Comprehensive Review of Pathophysiology and Therapeutic Advances. *Int. J. Mol. Sci.* **2023**, *24*, 10095. [CrossRef]
18. Definition of Reed-Sternberg Cell—NCI Dictionary of Cancer Terms—NCI. Available online: <https://www.cancer.gov/publications/dictionaries/cancer-terms/def/reed-sternberg-cell#> (accessed on 16 July 2024).
19. Brice, P.; de Kerviler, E.; Friedberg, J.W. Classical Hodgkin Lymphoma. *Lancet* **2021**, *398*, 1518–1527. [CrossRef]
20. Hoppe, R.T.; Advani, R.H.; Ai, W.Z.; Ambinder, R.F.; Bello, C.M.; Bierman, P.J.; Blum, K.A.; Dabaja, B.; Duron, Y.; Forero, A.; et al. Hodgkin Lymphoma. *J. Natl. Compr. Cancer Netw.* **2011**, *9*, 1020–1058. [CrossRef]
21. Connors, J.M.; Cozen, W.; Steidl, C.; Carbone, A.; Hoppe, R.T.; Flechtner, H.H.; Bartlett, N.L. Hodgkin Lymphoma. *Nat. Rev. Dis. Primers* **2020**, *6*, 1–25. [CrossRef]
22. Momotow, J.; Borchmann, S.; Eichenauer, D.A.; Engert, A.; Sasse, S. Hodgkin Lymphoma—Review on Pathogenesis, Diagnosis, Current and Future Treatment Approaches for Adult Patients. *J. Clin. Med.* **2021**, *10*, 1125. [CrossRef]
23. Ekström-Smedby, K. Epidemiology and Etiology of Non-Hodgkin Lymphoma—A Review. *Acta Oncol.* **2006**, *45*, 258–271. [CrossRef]
24. Armitage, J.O.; Weisenburger, D.D. New Approach to Classifying Non-Hodgkin’s Lymphomas: Clinical Features of the Major Histologic Subtypes. Non-Hodgkin’s Lymphoma Classification Project. *J. Clin. Oncol.* **1998**, *16*, 2780–2795. [CrossRef]
25. Ninkovic, S.; Lambert, J. Non-Hodgkin Lymphoma. *Medicine* **2017**, *45*, 297–304. [CrossRef]
26. Non-Hodgkin Lymphoma—NHS. Available online: <https://www.nhs.uk/conditions/non-hodgkin-lymphoma/> (accessed on 17 July 2024).
27. Saba, L.; Fu, C.L.; Liang, H.; Chaulagain, C.P. A Real-World Analysis on Access to Triplet and Quadruplet Therapy in Newly Diagnosed Multiple Myeloma Patients in the United States. *Clin. Lymphoma Myeloma Leuk.* **2024**. online ahead of print. [CrossRef]
28. Vinhas, R.; Mendes, R.; Fernandes, A.R.; Baptista, P.V. Nanoparticles-Emerging Potential for Managing Leukemia and Lymphoma. *Front. Bioeng. Biotechnol.* **2017**, *5*, 323313. [CrossRef]
29. Samir, A.; Elgamal, B.M.; Gabr, H.; Sabaawy, H.E. Nanotechnology Applications in Hematological Malignancies (Review). *Oncol. Rep.* **2015**, *34*, 1097. [CrossRef]
30. Zhan, F.; Zangari, M.; Qiu, L. Drug Resistance in Hematologic Malignancies: Induction Mechanisms, Genetics, and Therapeutics. *Biomed. Res. Int.* **2015**, *2015*. [CrossRef] [PubMed]
31. Hofmann, W.K.; Trumpp, A.; Müller-Tidow, C. Therapy Resistance Mechanisms in Hematological Malignancies. *Int. J. Cancer* **2023**, *152*, 340–347. [CrossRef]
32. Maura, R.; Francesco, A.; Simona, R.; Elena, S.; Claudio, A. Three-Dimensional Models: A Novel Approach for Lymphoma Research. *J. Cancer Res. Clin. Oncol.* **2022**, *148*, 753–765. [CrossRef]
33. Cauli, E.; Polidoro, M.A.; Marzorati, S.; Bernardi, C.; Rasponi, M.; Lleo, A. Cancer-on-Chip: A 3D Model for the Study of the Tumor Microenvironment. *J. Biol. Eng.* **2023**, *17*, 1–25. [CrossRef]
34. Zhou, Z.; Pang, Y.; Ji, J.; He, J.; Liu, T.; Ouyang, L.; Zhang, W.; Zhang, X.L.; Zhang, Z.G.; Zhang, K.; et al. Harnessing 3D In Vitro Systems to Model Immune Responses to Solid Tumours: A Step towards Improving and Creating Personalized Immunotherapies. *Nat. Rev. Immunol.* **2023**, *24*, 18–32. [CrossRef]
35. Flores-Torres, S.; Jiang, T.; Kort-Mascort, J.; Yang, Y.; Peza-Chavez, O.; Pal, S.; Mainolfi, A.; Pardo, L.A.; Ferri, L.; Bertos, N.; et al. Constructing 3D In Vitro Models of Heterocellular Solid Tumors and Stromal Tissues Using Extrusion-Based Bioprinting. *ACS Biomater. Sci. Eng.* **2023**, *9*, 542–561. [CrossRef]
36. Raic, A.; Naolou, T.; Mohra, A.; Chatterjee, C.; Lee-Thedieck, C. 3D Models of the Bone Marrow in Health and Disease: Yesterday, Today and Tomorrow. *MRS Commun.* **2019**, *9*, 37–52. [CrossRef]
37. Cupedo, T.; Stroock, A.; Coles, M. Application of Tissue Engineering to the Immune System: Development of Artificial Lymph Nodes. *Front. Immunol.* **2012**, *3*, 32837. [CrossRef] [PubMed]
38. Chemotherapy for Acute Lymphocytic Leukemia (ALL) | American Cancer Society. Available online: <https://www.cancer.org/cancer/types/acute-lymphocytic-leukemia/treating/chemotherapy.html> (accessed on 18 July 2024).
39. Targeted Therapy for Acute Lymphocytic Leukemia (ALL) | American Cancer Society. Available online: <https://www.cancer.org/cancer/types/acute-lymphocytic-leukemia/treating/targeted-therapy.html> (accessed on 18 July 2024).
40. Chevallier, P.; Pigneux, A.; Robillard, N.; Ayari, S.; Guillaume, T.; Delaunay, J.; Eveillard, M.; Dumas, P.Y.; Lippert, E.; Mohty, M.; et al. Rituximab for the Treatment of Adult Relapsed/Refractory CD20 Positive B-ALL Patients: A Pilot Series. *Leuk. Res.* **2012**, *36*, 311–315. [CrossRef]

41. Sasaki, K.; Kantarjian, H.M.; Morita, K.; Short, N.J.; Konopleva, M.; Jain, N.; Ravandi, F.; Garcia-Manero, G.; Wang, S.; Khoury, J.D.; et al. Hyper-CVAD plus Ofatumumab versus Hyper-CVAD plus Rituximab as Frontline Therapy in Adults with Philadelphia Chromosome-Negative Acute Lymphoblastic Leukemia: A Propensity Score Analysis. *Cancer* **2021**, *127*, 3381–3389. [[CrossRef](#)]
42. Kantarjian, H.; Thomas, D.; Jorgensen, J.; Kebriaei, P.; Jabbour, E.; Rytting, M.; York, S.; Ravandi, F.; Garris, R.; Kwari, M.; et al. Results of Inotuzumab Ozogamicin, a CD22 Monoclonal Antibody, in Refractory and Relapsed Acute Lymphocytic Leukemia. *Cancer* **2013**, *119*, 2728–2736. [[CrossRef](#)]
43. DeAngelo, D.J.; Stock, W.; Stein, A.S.; Shustov, A.; Liedtke, M.; Schiffer, C.A.; Vandendries, E.; Liau, K.; Ananthakrishnan, R.; Boni, J.; et al. Inotuzumab Ozogamicin in Adults with Relapsed or Refractory CD22-Positive Acute Lymphoblastic Leukemia: A Phase 1/2 Study. *Blood Adv.* **2017**, *1*, 1167–1180. [[CrossRef](#)]
44. Kantarjian, H.; Stein, A.; Gökbuget, N.; Fielding, A.K.; Schuh, A.C.; Ribera, J.-M.; Wei, A.; Dombret, H.; Foà, R.; Bassan, R.; et al. Blinatumomab versus Chemotherapy for Advanced Acute Lymphoblastic Leukemia. *N. Engl. J. Med.* **2017**, *376*, 836–847. [[CrossRef](#)]
45. Topp, M.S.; Gökbuget, N.; Stein, A.S.; Zugmaier, G.; O'Brien, S.; Bargou, R.C.; Dombret, H.; Fielding, A.K.; Heffner, L.; Larson, R.A.; et al. Safety and Activity of Blinatumomab for Adult Patients with Relapsed or Refractory B-Precursor Acute Lymphoblastic Leukaemia: A Multicentre, Single-Arm, Phase 2 Study. *Lancet Oncol* **2015**, *16*, 57–66. [[CrossRef](#)] [[PubMed](#)]
46. Maude, S.L.; Frey, N.; Shaw, P.A.; Aplenc, R.; Barrett, D.M.; Bunin, N.J.; Chew, A.; Gonzalez, V.E.; Zheng, Z.; Lacey, S.F.; et al. Chimeric Antigen Receptor T Cells for Sustained Remissions in Leukemia. *N. Engl. J. Med.* **2014**, *371*, 1507–1517. [[CrossRef](#)]
47. Park, J.H.; Rivière, I.; Gonen, M.; Wang, X.; Sénéchal, B.; Curran, K.J.; Sauter, C.; Wang, Y.; Santomaso, B.; Mead, E.; et al. Long-Term Follow-up of CD19 CAR Therapy in Acute Lymphoblastic Leukemia. *N. Engl. J. Med.* **2018**, *378*, 449–459. [[CrossRef](#)]
48. Cordoba, S.; Onuoha, S.; Thomas, S.; Pignataro, D.S.; Hough, R.; Ghorashian, S.; Vora, A.; Bonney, D.; Veys, P.; Rao, K.; et al. CAR T Cells with Dual Targeting of CD19 and CD22 in Pediatric and Young Adult Patients with Relapsed or Refractory B Cell Acute Lymphoblastic Leukemia: A Phase 1 Trial. *Nat. Med.* **2021**, *27*, 1797–1805. [[CrossRef](#)] [[PubMed](#)]
49. Liu, S.; Deng, B.; Yin, Z.; Lin, Y.; An, L.; Liu, D.; Pan, J.; Yu, X.; Chen, B.; Wu, T.; et al. Combination of CD19 and CD22 CAR-T Cell Therapy in Relapsed B-Cell Acute Lymphoblastic Leukemia after Allogeneic Transplantation. *Am. J. Hematol.* **2021**, *96*, 671–679. [[CrossRef](#)] [[PubMed](#)]
50. Shalabi, H.; Qin, H.; Su, A.; Yates, B.; Wolters, P.L.; Steinberg, S.M.; Ligon, J.A.; Silbert, S.; DéDé, K.; Benzaoui, M.; et al. CD19/22 CAR T Cells in Children and Young Adults with B-ALL: Phase 1 Results and Development of a Novel Bicistronic CAR. *Blood* **2022**, *140*, 451–463. [[CrossRef](#)] [[PubMed](#)]
51. Chemotherapy for Chronic Lymphocytic Leukemia | American Cancer Society. Available online: <https://www.cancer.org/cancer/types/chronic-lymphocytic-leukemia/treating/chemotherapy.html> (accessed on 18 July 2024).
52. Targeted Therapy Drugs for Chronic Lymphocytic Leukemia | American Cancer Society. Available online: <https://www.cancer.org/cancer/types/chronic-lymphocytic-leukemia/treating/targeted-therapy.html> (accessed on 19 July 2024).
53. Immunotherapy for Chronic Lymphocytic Leukemia | American Cancer Society. Available online: <https://www.cancer.org/cancer/types/chronic-lymphocytic-leukemia/treating/monoclonal-antibodies.html> (accessed on 19 July 2024).
54. Porter, D.L.; Hwang, W.T.; Frey, N.V.; Lacey, S.F.; Shaw, P.A.; Loren, A.W.; Bagg, A.; Marcucci, K.T.; Shen, A.; Gonzalez, V.; et al. Chimeric Antigen Receptor T Cells Persist and Induce Sustained Remissions in Relapsed Refractory Chronic Lymphocytic Leukemia. *Sci. Transl. Med.* **2015**, *7*, 303ra139. [[CrossRef](#)] [[PubMed](#)]
55. Shah, N.N.; Johnson, B.D.; Schneider, D.; Zhu, F.; Szabo, A.; Keever-Taylor, C.A.; Krueger, W.; Worden, A.A.; Kadan, M.J.; Yim, S.; et al. Bispecific Anti-CD20, Anti-CD19 CAR T Cells for Relapsed B Cell Malignancies: A Phase 1 Dose Escalation and Expansion Trial. *Nat. Med.* **2020**, *26*, 1569–1575. [[CrossRef](#)]
56. Chemotherapy for Acute Myeloid Leukemia (AML) | American Cancer Society. Available online: <https://www.cancer.org/cancer/types/acute-myeloid-leukemia/treating/chemotherapy.html> (accessed on 19 July 2024).
57. Targeted Therapy Drugs for Acute Myeloid Leukemia (AML) | American Cancer Society. Available online: <https://www.cancer.org/cancer/types/acute-myeloid-leukemia/treating/targeted-therapy.html> (accessed on 19 July 2024).
58. Swaminathan, M.; Cortes, J.E. Update on the Role of Gemtuzumab-Ozogamicin in the Treatment of Acute Myeloid Leukemia. *Ther. Adv. Hematol.* **2023**, *14*, 20406207231154708. [[CrossRef](#)]
59. Wang, Q.S.; Wang, Y.; Lv, H.Y.; Han, Q.W.; Fan, H.; Guo, B.; Wang, L.L.; Han, W.D. Treatment of CD33-Directed Chimeric Antigen Receptor-Modified T Cells in One Patient With Relapsed and Refractory Acute Myeloid Leukemia. *Mol. Ther.* **2015**, *23*, 184–191. [[CrossRef](#)]
60. Chemotherapy for Chronic Myeloid Leukemia | American Cancer Society. Available online: <https://www.cancer.org/cancer/types/chronic-myeloid-leukemia/treating/chemotherapy.html> (accessed on 20 July 2024).
61. Targeted Therapies for Chronic Myeloid Leukemia | American Cancer Society. Available online: <https://www.cancer.org/cancer/types/chronic-myeloid-leukemia/treating/targeted-therapies.html> (accessed on 20 July 2024).

62. Shanafelt, T.D.; Wang, V.; Kay, N.E.; Hanson, C.A.; O'Brien, S.M.; Barrientos, J.C.; Jelinek, D.F.; Braggio, E.; Leis, J.F.; Zhang, C.C.; et al. Ibrutinib and Rituximab Provides Superior Clinical Outcome Compared to FCR in Younger Patients with Chronic Lymphocytic Leukemia (CLL): Extended Follow-up from the E1912 Trial. *Blood* **2019**, *134*, 33. [CrossRef]
63. Shanafelt, T.D.; Wang, X.V.; Kay, N.E.; Hanson, C.A.; O'Brien, S.; Barrientos, J.; Jelinek, D.F.; Braggio, E.; Leis, J.F.; Zhang, C.C.; et al. Ibrutinib–Rituximab or Chemoimmunotherapy for Chronic Lymphocytic Leukemia. *N. Engl. J. Med.* **2019**, *381*, 432–443. [CrossRef] [PubMed]
64. Warda, W.; Larosa, F.; Da Rocha, M.N.; Trad, R.; Deconinck, E.; Fajloun, Z.; Faure, C.; Caillot, D.; Moldovan, M.; Valmary-Degano, S.; et al. CML Hematopoietic Stem Cells Expressing IL1RAP Can Be Targeted by Chimeric Antigen Receptor-Engineered T Cells. *Cancer Res.* **2019**, *79*, 663–675. [CrossRef] [PubMed]
65. Drug Therapy for Multiple Myeloma | American Cancer Society. Available online: <https://www.cancer.org/cancer/types/multiple-myeloma/treating/chemotherapy.html> (accessed on 20 July 2024).
66. Richardson, P.G.; Siegel, D.; Baz, R.; Kelley, S.L.; Munshi, N.C.; Laubach, J.; Sullivan, D.; Alsina, M.; Schlossman, R.; Ghobrial, I.M.; et al. Phase 1 Study of Pomalidomide MTD, Safety, and Efficacy in Patients with Refractory Multiple Myeloma Who Have Received Lenalidomide and Bortezomib. *Blood* **2013**, *121*, 1961–1967. [CrossRef]
67. Sammartano, V.; Franceschini, M.; Fredducci, S.; Caroni, F.; Ciofini, S.; Pacelli, P.; Bocchia, M.; Gozzetti, A. Anti-BCMA Novel Therapies for Multiple Myeloma. *Cancer Drug Resist.* **2023**, *6*, 169. [CrossRef] [PubMed]
68. Zhou, D.; Wang, Y.; Chen, C.; Li, Z.; Xu, K.; Zhao, K. Targeting GPRC5D for Multiple Myeloma Therapy. *J. Hematol. Oncol.* **2024**, *17*, 1–19. [CrossRef] [PubMed]
69. Ali, S.A.; Shi, V.; Maric, I.; Wang, M.; Stroncek, D.F.; Rose, J.J.; Brudno, J.N.; Stetler-Stevenson, M.; Feldman, S.A.; Hansen, B.G.; et al. T Cells Expressing an Anti-B-Cell Maturation Antigen Chimeric Antigen Receptor Cause Remissions of Multiple Myeloma. *Blood* **2016**, *128*, 1688–1700. [CrossRef]
70. Garfall, A.L.; Maus, M.V.; Hwang, W.-T.; Lacey, S.F.; Mahnke, Y.D.; Melenhorst, J.J.; Zheng, Z.; Vogl, D.T.; Cohen, A.D.; Weiss, B.M.; et al. Chimeric Antigen Receptor T Cells against CD19 for Multiple Myeloma. *N. Engl. J. Med.* **2015**, *373*, 1040–1047. [CrossRef] [PubMed]
71. Chemotherapy for Hodgkin Lymphoma | Hodgkin Lymphoma & Chemo | American Cancer Society. Available online: <https://www.cancer.org/cancer/types/hodgkin-lymphoma/treating/chemotherapy.html> (accessed on 20 July 2024).
72. Immunotherapy for Hodgkin Lymphoma | Hodgkin Antibody Treatment | American Cancer Society. Available online: <https://www.cancer.org/cancer/types/hodgkin-lymphoma/treating/monoclonal-antibodies.html> (accessed on 20 July 2024).
73. Ansell, S.M.; Lesokhin, A.M.; Borrello, I.; Halwani, A.; Scott, E.C.; Gutierrez, M.; Schuster, S.J.; Millenson, M.M.; Cattry, D.; Freeman, G.J.; et al. PD-1 Blockade with Nivolumab in Relapsed or Refractory Hodgkin's Lymphoma. *N. Engl. J. Med.* **2015**, *372*, 311–319. [CrossRef] [PubMed]
74. Wang, C.M.; Wu, Z.Q.; Wang, Y.; Guo, Y.L.; Dai, H.R.; Wang, X.H.; Li, X.; Zhang, Y.J.; Zhang, W.Y.; Chen, M.X.; et al. Autologous T Cells Expressing CD30 Chimeric Antigen Receptors for Relapsed or Refractory Hodgkin Lymphoma: An Open-Label Phase I Trial. *Clin. Cancer Res.* **2017**, *23*, 1156–1166. [CrossRef] [PubMed]
75. Ramos, C.A.; Ballard, B.; Zhang, H.; Dakhova, O.; Gee, A.P.; Mei, Z.; Bilgi, M.; Wu, M.F.; Liu, H.; Grilley, B.; et al. Clinical and Immunological Responses after CD30-Specific Chimeric Antigen Receptor–Redirected Lymphocytes. *J. Clin. Investig.* **2017**, *127*, 3462–3471. [CrossRef] [PubMed]
76. Chemotherapy for Non-Hodgkin Lymphoma | American Cancer Society. Available online: <https://www.cancer.org/cancer/types/non-hodgkin-lymphoma/treating/chemotherapy.html> (accessed on 20 July 2024).
77. Targeted Therapy Drugs for Non-Hodgkin Lymphoma | American Cancer Society. Available online: <https://www.cancer.org/cancer/types/non-hodgkin-lymphoma/treating/targeted-therapy.html> (accessed on 20 July 2024).
78. Immunotherapy for Non-Hodgkin Lymphoma | American Cancer Society. Available online: <https://www.cancer.org/cancer/types/non-hodgkin-lymphoma/treating/immunotherapy.html> (accessed on 20 July 2024).
79. Méndez-Ferrer, S.; Bonnet, D.; Steensma, D.P.; Hasserjian, R.P.; Ghobrial, I.M.; Gribben, J.G.; Andreeff, M.; Krause, D.S. Bone Marrow Niches in Haematological Malignancies. *Nat. Rev. Cancer* **2020**, *20*, 285–298. [CrossRef] [PubMed]
80. Baryawno, N.; Przybylski, D.; Kowalczyk, M.S.; Kfoury, Y.; Severe, N.; Gustafsson, K.; Kokkaliaris, K.D.; Mercier, F.; Tabaka, M.; Hofree, M.; et al. A Cellular Taxonomy of the Bone Marrow Stroma in Homeostasis and Leukemia. *Cell* **2019**, *177*, 1915–1932.e16. [CrossRef] [PubMed]
81. Wang, A.; Zhong, H. Roles of the Bone Marrow Niche in Hematopoiesis, Leukemogenesis, and Chemotherapy Resistance in Acute Myeloid Leukemia. *Hematology* **2018**, *23*, 729–739. [CrossRef] [PubMed]
82. Yin, T.; Li, L. The Stem Cell Niches in Bone. *J. Clin. Investig.* **2006**, *116*, 1195–1201. [CrossRef] [PubMed]
83. Klammer, S.; Voermans, C. The Role of Novel and Known Extracellular Matrix and Adhesion Molecules in the Homeostatic and Regenerative Bone Marrow Microenvironment. *Cell Adh. Migr.* **2014**, *8*, 563–577. [CrossRef] [PubMed]

84. Bruns, I.; Lucas, D.; Pinho, S.; Ahmed, J.; Lambert, M.P.; Kunisaki, Y.; Scheiermann, C.; Schiff, L.; Poncz, M.; Bergman, A.; et al. Megakaryocytes Regulate Hematopoietic Stem Cell Quiescence through CXCL4 Secretion. *Nat. Med.* **2014**, *20*, 1315–1320. [[CrossRef](#)]
85. Winkler, I.G.; Sims, N.A.; Pettit, A.R.; Barbier, V.; Nowlan, B.; Helwani, F.; Poulton, I.J.; Van Rooijen, N.; Alexander, K.A.; Raggatt, L.J.; et al. Bone Marrow Macrophages Maintain Hematopoietic Stem Cell (HSC) Niches and Their Depletion Mobilizes HSCs. *Blood* **2010**, *116*, 4815–4828. [[CrossRef](#)]
86. Galán-Díez, M.; Kousteni, S. The Osteoblastic Niche in Hematopoiesis and Hematological Myeloid Malignancies. *Curr. Mol. Biol. Rep.* **2017**, *3*, 53–62. [[CrossRef](#)]
87. Ding, L.; Saunders, T.L.; Enikolopov, G.; Morrison, S.J. Endothelial and Perivascular Cells Maintain Haematopoietic Stem Cells. *Nature* **2012**, *481*, 457–462. [[CrossRef](#)]
88. Nwajei, F.; Konopleva, M. The Bone Marrow Microenvironment as Niche Retreats for Hematopoietic and Leukemic Stem Cells. *Adv. Hematol.* **2013**, *2013*, 953982. [[CrossRef](#)] [[PubMed](#)]
89. Bakker, E.; Qattan, M.; Mutti, L.; Demonacos, C.; Krstic-Demonacos, M. The Role of Microenvironment and Immunity in Drug Response in Leukemia. *Biochim. Biophys. Acta (BBA)—Mol. Cell Res.* **2016**, *1863*, 414–426. [[CrossRef](#)] [[PubMed](#)]
90. Sison, E.A.R.; Brown, P. The Bone Marrow Microenvironment and Leukemia: Biology and Therapeutic Targeting. *Expert Rev. Hematol.* **2011**, *4*, 271–283. [[CrossRef](#)] [[PubMed](#)]
91. Shafat, M.S.; Gnanaswaran, B.; Bowles, K.M.; Rushworth, S.A. The Bone Marrow Microenvironment—Home of the Leukemic Blasts. *Blood Rev.* **2017**, *31*, 277–286. [[CrossRef](#)] [[PubMed](#)]
92. Pimenta, D.B.; Varela, V.A.; Datoguaia, T.S.; Caraciolo, V.B.; Lopes, G.H.; Pereira, W.O. The Bone Marrow Microenvironment Mechanisms in Acute Myeloid Leukemia. *Front. Cell Dev. Biol.* **2021**, *9*, 764698. [[CrossRef](#)] [[PubMed](#)]
93. Moser-Katz, T.; Joseph, N.S.; Dhodapkar, M.V.; Lee, K.P.; Boise, L.H. Game of Bones: How Myeloma Manipulates Its Microenvironment. *Front. Oncol.* **2021**, *10*, 625199. [[CrossRef](#)] [[PubMed](#)]
94. Duarte, D.; Hawkins, E.D.; Lo Celso, C. The Interplay of Leukemia Cells and the Bone Marrow Microenvironment. *Blood* **2018**, *131*, 1507–1511. [[CrossRef](#)]
95. Battula, V.L.; Le, P.M.; Sun, J.C.; Nguyen, K.; Yuan, B.; Zhou, X.; Sonnylal, S.; McQueen, T.; Ruvolo, V.; Michel, K.A.; et al. AML-Induced Osteogenic Differentiation in Mesenchymal Stromal Cells Supports Leukemia Growth. *JCI Insight* **2017**, *2*, e90036. [[CrossRef](#)] [[PubMed](#)]
96. Le, P.M.; Andreeff, M.; Lokesh Battula, V. Osteogenic Niche in the Regulation of Normal Hematopoiesis and Leukemogenesis. *Haematologica* **2018**, *103*, 1945–1955. [[CrossRef](#)] [[PubMed](#)]
97. Giannoni, P.; Marini, C.; Cutrona, G.; Matis, S.; Capra, M.C.; Puglisi, F.; Luzzi, P.; Pigozzi, S.; Gaggero, G.; Neri, A.; et al. Chronic Lymphocytic Leukemia Cells Impair Osteoblastogenesis and Promote Osteoclastogenesis: Role of TNF α , IL-6 and IL-11 Cytokines. *Haematologica* **2021**, *106*, 2598–2612. [[CrossRef](#)] [[PubMed](#)]
98. Cogle, C.R.; Goldman, D.C.; Madlambayan, G.J.; Leon, R.P.; Al Masri, A.; Clark, H.A.; Asbaghi, S.A.; Tyner, J.W.; Dunlap, J.; Fan, G.; et al. Functional Integration of Acute Myeloid Leukemia into the Vascular Niche. *Leukemia* **2014**, *28*, 1978–1987. [[CrossRef](#)] [[PubMed](#)]
99. Kuzu, I.; Beksac, M.; Arat, M.; Celebi, H.; Elhan, A.H.; Erekul, S. Bone Marrow Microvessel Density (MVD) in Adult Acute Myeloid Leukemia (AML): Therapy Induced Changes and Effects on Survival. *Leuk. Lymphoma* **2004**, *45*, 1185–1190. [[CrossRef](#)]
100. Zanetti, C.; Krause, D.S. “Caught in the Net”: The Extracellular Matrix of the Bone Marrow in Normal Hematopoiesis and Leukemia. *Exp. Hematol.* **2020**, *89*, 13–25. [[CrossRef](#)] [[PubMed](#)]
101. Verma, D.; Zanetti, C.; Godavarthy, P.S.; Kumar, R.; Minciocchi, V.R.; Pfeiffer, J.; Metzler, M.; Lefort, S.; Maguer-Satta, V.; Nicolini, F.E.; et al. Bone Marrow Niche-Derived Extracellular Matrix-Degrading Enzymes Influence the Progression of B-Cell Acute Lymphoblastic Leukemia. *Leukemia* **2020**, *34*, 1540–1552. [[CrossRef](#)] [[PubMed](#)]
102. Naci, D.; Berrazouane, S.; Barabé, F.; Aoudjit, F. Cell Adhesion to Collagen Promotes Leukemia Resistance to Doxorubicin by Reducing DNA Damage through the Inhibition of Rac1 Activation. *Sci. Rep.* **2019**, *9*, 19455. [[CrossRef](#)] [[PubMed](#)]
103. Kawano, Y.; Moschetta, M.; Manier, S.; Glavey, S.; Görgün, G.T.; Roccaro, A.M.; Anderson, K.C.; Ghobrial, I.M. Targeting the Bone Marrow Microenvironment in Multiple Myeloma. *Immunol. Rev.* **2015**, *263*, 160–172. [[CrossRef](#)]
104. Manier, S.; Sacco, A.; Leleu, X.; Ghobrial, I.M.; Roccaro, A.M. Bone Marrow Microenvironment in Multiple Myeloma Progression. *J. Biomed. Biotechnol.* **2012**, *2012*, 157496. [[CrossRef](#)] [[PubMed](#)]
105. Bianchi, G.; Munshi, N.C. Pathogenesis beyond the Cancer Clone(s) in Multiple Myeloma. *Blood* **2015**, *125*, 3049–3058. [[CrossRef](#)]
106. García-Ortiz, A.; Rodríguez-García, Y.; Encinas, J.; Maroto-Martín, E.; Castellano, E.; Teixidó, J.; Martínez-López, J. The Role of Tumor Microenvironment in Multiple Myeloma Development and Progression. *Cancers* **2021**, *13*, 217. [[CrossRef](#)] [[PubMed](#)]
107. Roccaro, A.M.; Sacco, A.; Maiso, P.; Azab, A.K.; Tai, Y.-T.; Reagan, M.; Azab, F.; Flores, L.M.; Campigotto, F.; Weller, E.; et al. BM Mesenchymal Stromal Cell-Derived Exosomes Facilitate Multiple Myeloma Progression. *J. Clin. Investig.* **2013**, *123*, 1542–1555. [[CrossRef](#)] [[PubMed](#)]

108. Wang, J.; Hendrix, A.; Hernot, S.; Lemaire, M.; De Bruyne, E.; Van Valckenborgh, E.; Lahoutte, T.; De Wever, O.; Vanderkerken, K.; Menu, E. Bone Marrow Stromal Cell-Derived Exosomes as Communicators in Drug Resistance in Multiple Myeloma Cells. *Blood* **2014**, *124*, 555–566. [[CrossRef](#)]
109. Raje, N.; Roodman, G.D. Advances in the Biology and Treatment of Bone Disease in Multiple Myeloma. *Clin. Cancer Res.* **2011**, *17*, 1278–1286. [[CrossRef](#)] [[PubMed](#)]
110. Giuliani, N.; Rizzoli, V.; Roodman, G.D. Multiple Myeloma Bone Disease: Pathophysiology of Osteoblast Inhibition. *Blood* **2006**, *108*, 3992–3996. [[CrossRef](#)]
111. Kuehl, W.M.; Bergsagel, P.L. Molecular Pathogenesis of Multiple Myeloma and Its Premalignant Precursor. *J. Clin. Investig.* **2012**, *122*, 3456–3463. [[CrossRef](#)] [[PubMed](#)]
112. Lawson, M.A.; McDonald, M.M.; Kovacic, N.; Hua Khoo, W.; Terry, R.L.; Down, J.; Kaplan, W.; Paton-Hough, J.; Fellows, C.; Pettitt, J.A.; et al. Osteoclasts Control Reactivation of Dormant Myeloma Cells by Remodelling the Endosteal Niche. *Nat. Commun.* **2015**, *6*, 8983. [[CrossRef](#)] [[PubMed](#)]
113. Khoo, W.H.; Ledergor, G.; Weiner, A.; Roden, D.L.; Terry, R.L.; McDonald, M.M.; Chai, R.C.; De Veirman, K.; Owen, K.L.; Opperman, K.S.; et al. A Niche-Dependent Myeloid Transcriptome Signature Defines Dormant Myeloma Cells. *Blood* **2019**, *134*, 30–43. [[CrossRef](#)]
114. Nakamura, K.; Smyth, M.J.; Martinet, L. Cancer Immunoediting and Immune Dysregulation in Multiple Myeloma. *Blood* **2020**, *136*, 2731–2740. [[CrossRef](#)] [[PubMed](#)]
115. Yasui, H.; Hideshima, T.; Richardson, P.G.; Anderson, K.C. Novel Therapeutic Strategies Targeting Growth Factor Signalling Cascades in Multiple Myeloma. *Br. J. Haematol.* **2006**, *132*, 385–397. [[CrossRef](#)] [[PubMed](#)]
116. Tanaka, Y.; Abe, M.; Hiasa, M.; Oda, A.; Amou, H.; Nakano, A.; Takeuchi, K.; Kitazoe, K.; Kido, S.; Inoue, D.; et al. Myeloma Cell-Osteoclast Interaction Enhances Angiogenesis Together with Bone Resorption: A Role for Vascular Endothelial Cell Growth Factor and Osteopontin. *Clin. Cancer Res.* **2007**, *13*, 816–823. [[CrossRef](#)]
117. Corre, J.; Mahtouk, K.; Attal, M.; Gadelorge, M.; Huynh, A.; Fleury-Cappellesso, S.; Danho, C.; Laharrague, P.; Klein, B.; Rème, T.; et al. Bone Marrow Mesenchymal Stem Cells Are Abnormal in Multiple Myeloma. *Leukemia* **2007**, *21*, 1079–1088. [[CrossRef](#)]
118. Jakob, C.; Sterz, J.; Zavrski, I.; Heider, U.; Kleeberg, L.; Fleissner, C.; Kaiser, M.; Sezer, O. Angiogenesis in Multiple Myeloma. *Eur. J. Cancer* **2006**, *42*, 1581–1590. [[CrossRef](#)] [[PubMed](#)]
119. Glavey, S.V.; Naba, A.; Manier, S.; Clauser, K.; Tahri, S.; Park, J.; Reagan, M.R.; Moschetta, M.; Mishima, Y.; Gambella, M.; et al. Proteomic Characterization of Human Multiple Myeloma Bone Marrow Extracellular Matrix. *Leukemia* **2017**, *31*, 2426–2434. [[CrossRef](#)] [[PubMed](#)]
120. Landowski, T.H.; Olashaw, N.E.; Agrawal, D.; Dalton, W.S. Cell Adhesion-Mediated Drug Resistance (CAM-DR) Is Associated with Activation of NF-KB (RelB/P50) in Myeloma Cells. *Oncogene* **2003**, *22*, 2417–2421. [[CrossRef](#)] [[PubMed](#)]
121. Ribatti, D.; Nico, B.; Vacca, A. Multiple Myeloma as a Model for the Role of Bone Marrow Niches in the Control of Angiogenesis. *Int. Rev. Cell Mol. Biol.* **2015**, *314*, 259–282. [[CrossRef](#)] [[PubMed](#)]
122. Ruddle, N.H.; Akirav, E.M. Secondary Lymphoid Organs: Responding to Genetic and Environmental Cues in Ontogeny and the Immune Response. *J. Immunol.* **2009**, *183*, 2205–2212. [[CrossRef](#)] [[PubMed](#)]
123. Song, J.; Lokmic, Z.; Lämmermann, T.; Rolf, J.; Wu, C.; Zhang, X.; Hallmann, R.; Hannocks, M.J.; Horn, N.; Ruegg, M.A.; et al. Extracellular Matrix of Secondary Lymphoid Organs Impacts on B-Cell Fate and Survival. *Proc. Natl. Acad. Sci. USA* **2013**, *110*, E2915–E2924. [[CrossRef](#)] [[PubMed](#)]
124. Genovese, L.; Brendolan, A. Lymphoid Tissue Mesenchymal Stromal Cells in Development and Tissue Remodeling. *Stem Cells Int.* **2016**, *2016*, 8419104. [[CrossRef](#)]
125. Bajénoff, M.; Egen, J.G.; Koo, L.Y.; Laugier, J.P.; Brau, F.; Glaichenhaus, N.; Germain, R.N. Stromal Cell Networks Regulate Lymphocyte Entry, Migration, and Territoriality in Lymph Nodes. *Immunity* **2006**, *25*, 989–1001. [[CrossRef](#)] [[PubMed](#)]
126. Nolte, M.A.; Beliën, J.A.M.; Schadee-Eestermans, I.; Jansen, W.; Unger, W.W.J.; Van Rooijen, N.; Kraal, G.; Mebius, R.E. A Conduit System Distributes Chemokines and Small Blood-Borne Molecules through the Splenic White Pulp. *J. Exp. Med.* **2003**, *198*, 505–512. [[CrossRef](#)] [[PubMed](#)]
127. Aldinucci, D.; Gloghini, A.; Pinto, A.; De Filippi, R.; Carbone, A. The Classical Hodgkin’s Lymphoma Microenvironment and Its Role in Promoting Tumour Growth and Immune Escape. *J. Pathol.* **2010**, *221*, 248–263. [[CrossRef](#)]
128. Joshi, M.; Ansell, S.M. Activating the Antitumor Immune Response in Non-Hodgkin Lymphoma Using Immune Checkpoint Inhibitors. *J. Immunol. Res.* **2020**, *2020*, 8820377. [[CrossRef](#)]
129. Calabretta, E.; D’amore, F.; Carlo-Stella, C. Immune and Inflammatory Cells of the Tumor Microenvironment Represent Novel Therapeutic Targets in Classical Hodgkin Lymphoma. *Int. J. Mol. Sci.* **2019**, *20*, 5503. [[CrossRef](#)] [[PubMed](#)]
130. Menter, T.; Tzankov, A. Lymphomas and Their Microenvironment: A Multifaceted Relationship. *Pathobiology* **2019**, *86*, 225–236. [[CrossRef](#)] [[PubMed](#)]

131. Lorenzo-Sanz, L.; Muñoz, P. Tumor-Infiltrating Immunosuppressive Cells in Cancer-Cell Plasticity, Tumor Progression and Therapy Response. *Cancer Microenviron.* **2019**, *12*, 119–132. [[CrossRef](#)] [[PubMed](#)]
132. Cacciatore, M.; Guarnotta, C.; Calvaruso, M.; Sangaletti, S.; Florena, A.M.; Franco, V.; Colombo, M.P.; Tripodo, C. Microenvironment-Centred Dynamics in Aggressive B-Cell Lymphomas. *Adv. Hematol.* **2012**, *2012*, 138079. [[CrossRef](#)]
133. Pupa, S.M.; Ménard, S.; Forti, S.; Tagliabue, E. New Insights into the Role of Extracellular Matrix during Tumor Onset and Progression. *J. Cell. Physiol.* **2002**, *192*, 259–267. [[CrossRef](#)] [[PubMed](#)]
134. Malaponte, G.; Hafsi, S.; Polesel, J.; Castellano, G.; Spessotto, P.; Guarneri, C.; Canevari, S.; Signorelli, S.S.; McCubrey, J.A.; Libra, M. Tumor Microenvironment in Diffuse Large B-Cell Lymphoma: Matrixmetalloproteinases Activation Is Mediated by Osteopontin Overexpression. *Biochim. Et Biophys. Acta (BBA)—Mol. Cell Res.* **2016**, *1863*, 483–489. [[CrossRef](#)]
135. Sangaletti, S.; Tripodo, C.; Vitali, C.; Portararo, P.; Guarnotta, C.; Casalini, P.; Cappetti, B.; Miotti, S.; Pinciroli, P.; Fuligni, F.; et al. Defective Stromal Remodeling and Neutrophil Extracellular Traps in Lymphoid Tissues Favor the Transition from Autoimmunity to Lymphomas. *Cancer Discov.* **2014**, *4*, 110–129. [[CrossRef](#)]
136. Cioroianu, A.I.; Stinga, P.I.; Sticlaru, L.; Cioplea, M.D.; Nichita, L.; Popp, C.; Staniceanu, F. Tumor Microenvironment in Diffuse Large B-Cell Lymphoma: Role and Prognosis. *Anal. Cell. Pathol.* **2019**, *2019*, 8586354. [[CrossRef](#)]
137. Aljittawi, O.S.; Li, D.; Xiao, Y.; Zhang, D.; Ramachandran, K.; Stehno-Bittel, L.; Van Veldhuizen, P.; Lin, T.L.; Kambhampati, S.; Garimella, R. A Novel Three-Dimensional Stromal-Based Model for in Vitro Chemotherapy Sensitivity Testing of Leukemia Cells. *Leuk. Lymphoma* **2014**, *55*, 378–391. [[CrossRef](#)]
138. Hawkins, E.D.; Duarte, D.; Akinduro, O.; Khorshed, R.A.; Passaro, D.; Nowicka, M.; Straszowski, L.; Scott, M.K.; Rothery, S.; Ruivo, N.; et al. T-Cell Acute Leukaemia Exhibits Dynamic Interactions with Bone Marrow Microenvironments. *Nature* **2016**, *538*, 518–522. [[CrossRef](#)] [[PubMed](#)]
139. Sabhachandani, P.; Sarkar, S.; Mckenney, S.; Ravi, D.; Evens, A.M.; Konry, T. Microfluidic Assembly of Hydrogel-Based Immunogenic Tumor Spheroids for Evaluation of Anticancer Therapies and Biomarker Release. *J. Control. Release* **2019**, *295*, 21–30. [[CrossRef](#)]
140. Foxall, R.; Narang, P.; Glaysher, B.; Hub, E.; Teal, E.; Coles, M.C.; Ashton-Key, M.; Beers, S.A.; Cragg, M.S. Developing a 3D B Cell Lymphoma Culture System to Model Antibody Therapy. *Front. Immunol.* **2021**, *11*, 605231. [[CrossRef](#)]
141. Wood, L.D.; Ewald, A.J. Organoids in Cancer Research: A Review for Pathologist-Scientists. *J. Pathol.* **2021**, *254*, 395–404. [[CrossRef](#)]
142. Xia, T.; Du, W.L.; Chen, X.Y.; Zhang, Y.N. Organoid Models of the Tumor Microenvironment and Their Applications. *J. Cell. Mol. Med.* **2021**, *25*, 5829–5841. [[CrossRef](#)]
143. Ayala, F.; Dewar, R.; Kieran, M.; Kalluri, R. Contribution of Bone Microenvironment to Leukemogenesis and Leukemia Progression. *Leukemia* **2009**, *23*, 2233–2241. [[CrossRef](#)] [[PubMed](#)]
144. Dozzo, A.; Galvin, A.; Shin, J.W.; Scalia, S.; O'Driscoll, C.M.; Ryan, K.B. Modelling Acute Myeloid Leukemia (AML): What's New? A Transition from the Classical to the Modern. *Drug Deliv. Transl. Res.* **2023**, *13*, 2110–2141. [[CrossRef](#)] [[PubMed](#)]
145. Krause, D.S.; Scadden, D.T. A Hostel for the Hostile: The Bone Marrow Niche in Hematologic Neoplasms. *Haematologica* **2015**, *100*, 1376–1387. [[CrossRef](#)] [[PubMed](#)]
146. Chopra, M.; Bohlander, S.K. The Cell of Origin and the Leukemia Stem Cell in Acute Myeloid Leukemia. *Genes Chromosomes Cancer* **2019**, *58*, 850–858. [[CrossRef](#)]
147. Fodil, S.; Arnaud, M.; Vaganay, C.; Puissant, A.; Lengline, E.; Mooney, N.; Itzykson, R.; Zafrani, L. Endothelial Cells: Major Players in Acute Myeloid Leukaemia. *Blood Rev.* **2022**, *54*, 100932. [[CrossRef](#)] [[PubMed](#)]
148. Pontikoglou, C.; Kastrinaki, M.C.; Klaus, M.; Kalpadakis, C.; Katonis, P.; Alpantaki, K.; Pangalis, G.A.; Papadaki, H.A. Study of the Quantitative, Functional, Cytogenetic, and Immunoregulatory Properties of Bone Marrow Mesenchymal Stem Cells in Patients with B-Cell Chronic Lymphocytic Leukemia. *Stem Cells Dev.* **2012**, *22*, 1329–1341. [[CrossRef](#)] [[PubMed](#)]
149. Witkowski, M.T.; Dolgalev, I.; Evensen, N.A.; Ma, C.; Chambers, T.; Roberts, K.G.; Sreeram, S.; Dai, Y.; Tikhonova, A.N.; Lasry, A.; et al. Extensive Remodeling of the Immune Microenvironment in B-Cell Acute Lymphoblastic Leukemia. *Cancer Cell* **2020**, *37*, 867. [[CrossRef](#)]
150. Korkolopoulou, P.; Viniou, N.; Kavantzias, N.; Patsouris, E.; Thymara, I.; Pavlopoulos, P.M.; Terpos, E.; Stamatopoulos, K.; Plata, E.; Anargyrou, K.; et al. Clinicopathologic Correlations of Bone Marrow Angiogenesis in Chronic Myeloid Leukemia: A Morphometric Study. *Leukemia* **2003**, *17*, 89–97. [[CrossRef](#)] [[PubMed](#)]
151. Bray, L.J.; Binner, M.; Körner, Y.; Von Bonin, M.; Bornhäuser, M.; Werner, C. A Three-Dimensional Ex Vivo Tri-Culture Model Mimics Cell-Cell Interactions between Acute Myeloid Leukemia and the Vascular Niche. *Haematologica* **2017**, *102*, 1215–1226. [[CrossRef](#)] [[PubMed](#)]
152. Jacamo, R.; Chen, Y.; Wang, Z.; Wencai, M.; Zhang, M.; Spaeth, E.L.; Wang, Y.; Battula, V.L.; Mak, P.Y.; Schallmoser, K.; et al. Reciprocal Leukemia-Stroma VCAM-1/VLA-4-Dependent Activation of NF-KB Mediates Chemoresistance. *Blood* **2014**, *123*, 2691–2702. [[CrossRef](#)] [[PubMed](#)]

153. Boyerinas, B.; Zafrir, M.; Yesilkanal, A.E.; Price, T.T.; Hyjek, E.M.; Sipkins, D.A. Adhesion to Osteopontin in the Bone Marrow Niche Regulates Lymphoblastic Leukemia Cell Dormancy. *Blood* **2013**, *121*, 4821–4831. [[CrossRef](#)]
154. Ponzoni, M.; Doglioni, C.; Caligaris-Cappio, F. Chronic Lymphocytic Leukemia: The Pathologist's View of Lymph Node Microenvironment. *Semin. Diagn. Pathol.* **2011**, *28*, 161–166. [[CrossRef](#)] [[PubMed](#)]
155. Herishanu, Y.; Pérez-Galán, P.; Liu, D.; Biancotto, A.; Pittaluga, S.; Vire, B.; Gibellini, F.; Njuguna, N.; Lee, E.; Stennett, L.; et al. The Lymph Node Microenvironment Promotes B-Cell Receptor Signaling, NF- κ B Activation, and Tumor Proliferation in Chronic Lymphocytic Leukemia. *Blood* **2011**, *117*, 563–574. [[CrossRef](#)]
156. Torres-Barrera, P.; Moreno-Lorenzana, D.; Alvarado-Moreno, J.A.; García-Ruiz, E.; Lagunas, C.; Mayani, H.; Chávez-González, A. Cell Contact with Endothelial Cells Favors the In Vitro Maintenance of Human Chronic Myeloid Leukemia Stem and Progenitor Cells. *Int. J. Mol. Sci.* **2022**, *23*, 10326. [[CrossRef](#)] [[PubMed](#)]
157. Barboglio, F.; Belloni, D.; Scarfò, L.; Sbrana, F.V.; Ponzoni, M.; Bongiovanni, L.; Pavesi, L.; Zambroni, D.; Stamatopoulos, K.; Caiolfa, V.R.; et al. Three-Dimensional Co-Culture Model of Chronic Lymphocytic Leukemia Bone Marrow Microenvironment Predicts Patient-Specific Response to Mobilizing Agents. *Haematologica* **2020**, *106*, 2334–2344. [[CrossRef](#)]
158. Svozilová, H.; Plichta, Z.; Proks, V.; Studená, R.; Baloun, J.; Doubek, M.; Pospíšilová, Š.; Horák, D. RGDS-Modified Superporous Poly(2-Hydroxyethyl Methacrylate)-Based Scaffolds as 3D In Vitro Leukemia Model. *Int. J. Mol. Sci.* **2021**, *22*, 2376. [[CrossRef](#)] [[PubMed](#)]
159. Ma, C.; Witkowski, M.T.; Harris, J.; Dolgalev, I.; Sreeram, S.; Qian, W.; Tong, J.; Chen, X.; Aifantis, I.; Chen, W. Leukemia-on-a-Chip: Dissecting the Chemoresistance Mechanisms in B Cell Acute Lymphoblastic Leukemia Bone Marrow Niche. *Sci. Adv.* **2020**, *6*, eaba5536. [[CrossRef](#)]
160. Sbrana, F.V.; Pinos, R.; Barboglio, F.; Ribezzi, D.; Scagnoli, F.; Scarfò, L.; Redwan, I.N.; Martinez, H.; Farè, S.; Ghia, P.; et al. 3D Bioprinting Allows the Establishment of Long-Term 3D Culture Model for Chronic Lymphocytic Leukemia Cells. *Front. Immunol.* **2021**, *12*, 639572. [[CrossRef](#)] [[PubMed](#)]
161. Freudenberg, U.; Hermann, A.; Welzel, P.B.; Stirl, K.; Schwarz, S.C.; Grimmer, M.; Zieris, A.; Panyanuwat, W.; Zschoche, S.; Meinhold, D.; et al. A Star-PEG–Heparin Hydrogel Platform to Aid Cell Replacement Therapies for Neurodegenerative Diseases. *Biomaterials* **2009**, *30*, 5049–5060. [[CrossRef](#)] [[PubMed](#)]
162. Tsurkan, M.V.; Chwalek, K.; Prokoph, S.; Zieris, A.; Levental, K.R.; Freudenberg, U.; Werner, C.; Tsurkan, M.V.; Chwalek, K.; Prokoph, S.; et al. Defined Polymer–Peptide Conjugates to Form Cell-Instructive StarPEG–Heparin Matrices In Situ. *Adv. Mater.* **2013**, *25*, 2606–2610. [[CrossRef](#)]
163. Borthakur, G.; Ofran, Y.; Tallman, M.S.; Foran, J.; Uy, G.L.; DiPersio, J.F.; Showel, M.M.; Shimoni, A.; Nagler, A.; Rowe, J.M.; et al. BL-8040 CXCR4 Antagonist Is Safe and Demonstrates Antileukemic Activity in Combination with Cytarabine for the Treatment of Relapsed/Refractory Acute Myelogenous Leukemia: An Open-Label Safety and Efficacy Phase 2a Study. *Cancer* **2021**, *127*, 1246–1259. [[CrossRef](#)]
164. Chen, Y.; Jacamo, R.; Konopleva, M.; Garzon, R.; Croce, C.; Andreeff, M. CXCR4 Downregulation of Let-7a Drives Chemoresistance in Acute Myeloid Leukemia. *J. Clin. Investig.* **2013**, *123*, 2395. [[CrossRef](#)]
165. Duan, C.W.; Shi, J.; Chen, J.; Wang, B.; Yu, Y.H.; Qin, X.; Zhou, X.C.; Cai, Y.J.; Li, Z.Q.; Zhang, F.; et al. Leukemia Propagating Cells Rebuild an Evolving Niche in Response to Therapy. *Cancer Cell* **2014**, *25*, 778–793. [[CrossRef](#)]
166. Wang, S.; Wang, X.; Liu, S.; Zhang, S.; Wei, X.; Song, Y.; Yin, Q. The Cxcr4 Antagonist, Amd3100, Reverses Mesenchymal Stem Cell-Mediated Drug Resistance in Relapsed/Refractory Acute Lymphoblastic Leukemia. *Onco Targets Ther.* **2020**, *13*, 6583–6591. [[CrossRef](#)]
167. Belloni, D.; Heltai, S.; Ponzoni, M.; Villa, A.; Vergani, B.; Pecciarini, L.; Marcatti, M.; Girlanda, S.; Tonon, G.; Ciceri, F.; et al. Modeling Multiple Myeloma-Bone Marrow Interactions and Response to Drugs in a 3d Surrogate Microenvironment. *Haematologica* **2018**, *103*, 707–716. [[CrossRef](#)]
168. Scielzo, C.; Bertilaccio, M.T.S.; Simonetti, G.; Dagklis, A.; Ten Hacken, E.; Fazi, C.; Muzio, M.; Caiolfa, V.; Kitamura, D.; Restuccia, U.; et al. HS1 Has a Central Role in the Trafficking and Homing of Leukemic B Cells. *Blood* **2010**, *116*, 3537–3546. [[CrossRef](#)]
169. Herman, S.E.M.; Mustafa, R.Z.; Jones, J.; Wong, D.H.; Farooqui, M.; Wiestner, A. Treatment with Ibrutinib Inhibits BTK and VLA-4 Dependent Adhesion of Chronic Lymphocytic Leukemia Cells in Vivo. *Clin. Cancer Res.* **2015**, *21*, 4642. [[CrossRef](#)] [[PubMed](#)]
170. Kirshner, J.; Thulien, K.J.; Martin, L.D.; Debes Marun, C.; Reiman, T.; Belch, A.R.; Pilarski, L.M. A Unique Three-Dimensional Model for Evaluating the Impact of Therapy on Multiple Myeloma. *Blood* **2008**, *112*, 2935–2945. [[CrossRef](#)]
171. Wu, D.; Wang, Z.; Li, J.; Song, Y.; Perez, M.E.M.; Wang, Z.; Cao, X.; Cao, C.; Maharjan, S.; Anderson, K.C.; et al. A 3D-Bioprinted Multiple Myeloma Model. *Adv. Healthc. Mater.* **2022**, *11*, e2100884. [[CrossRef](#)]
172. Clara-Trujillo, S.; Ferrer, G.G.; Ribelles, J.L.G. In Vitro Modeling of Non-Solid Tumors: How Far Can Tissue Engineering Go? *Int. J. Mol. Sci.* **2020**, *21*, 5747. [[CrossRef](#)] [[PubMed](#)]
173. Bam, R.; Khan, S.; Ling, W.; Randal, S.S.; Li, X.; Barlogie, B.; Edmondson, R.; Yaccoby, S. Primary Myeloma Interaction and Growth in Coculture with Healthy Donor Hematopoietic Bone Marrow. *BMC Cancer* **2015**, *15*, 864. [[CrossRef](#)]

174. Kim, J.; Denu, R.A.; Dollar, B.A.; Escalante, L.E.; Kuether, J.P.; Callander, N.S.; Asimakopoulos, F.; Hematti, P. Macrophages and Mesenchymal Stromal Cells Support Survival and Proliferation of Multiple Myeloma Cells. *Br. J. Haematol.* **2012**, *158*, 336–346. [CrossRef]
175. Braham, M.V.J.; Deshantri, A.K.; Minnema, M.C.; Öner, F.C.; Schiffelers, R.M.; Fens, M.H.A.M.; Alblas, J. Liposomal Drug Delivery in an in Vitro 3D Bone Marrow Model for Multiple Myeloma. *Int. J. Nanomed.* **2018**, *13*, 8105–8118. [CrossRef]
176. Jakubikova, J.; Cholujova, D.; Hideshima, T.; Gronesova, P.; Soltysova, A.; Harada, T.; Joo, J.; Kong, S.-Y.; Szalat, R.E.; Richardson, P.G.; et al. A Novel 3D Mesenchymal Stem Cell Model of the Multiple Myeloma Bone Marrow Niche: Biologic and Clinical Applications. *Oncotarget* **2016**, *7*, 77326–77341. [CrossRef]
177. Reagan, M.R.; Mishima, Y.; Glavey, S.V.; Zhang, Y.; Manier, S.; Lu, Z.N.; Memarzadeh, M.; Zhang, Y.; Sacco, A.; Aljawai, Y.; et al. Investigating Osteogenic Differentiation in Multiple Myeloma Using a Novel 3D Bone Marrow Niche Model. *Blood* **2014**, *124*, 3250–3259. [CrossRef] [PubMed]
178. Inhibitory Effects of Osteoblasts and Increased Bone Formation on Myeloma in Novel Culture Systems and a Myelomatous Mouse Model | Haematologica. Available online: <https://haematologica.org/article/view/3843> (accessed on 19 December 2024).
179. de la Puente, P.; Muz, B.; Gilson, R.C.; Azab, F.; Luderer, M.; King, J.; Achilefu, S.; Vij, R.; Azab, A.K. 3D Tissue-Engineered Bone Marrow as a Novel Model to Study Pathophysiology and Drug Resistance in Multiple Myeloma. *Biomaterials* **2015**, *73*, 70–84. [CrossRef] [PubMed]
180. Clara-Trujillo, S.; Tolosa, L.; Cordón, L.; Sempere, A.; Gallego Ferrer, G.; Gómez Ribelles, J.L. Novel Microgel Culture System as Semi-Solid Three-Dimensional in Vitro Model for the Study of Multiple Myeloma Proliferation and Drug Resistance. *Biomater. Adv.* **2022**, *135*, 212749. [CrossRef] [PubMed]
181. Avigdor, A. CD44 and Hyaluronic Acid Cooperate with SDF-1 in the Trafficking of Human CD34+ Stem/Progenitor Cells to Bone Marrow. *Blood* **2004**, *103*, 2981–2989. [CrossRef] [PubMed]
182. Tancred, T.M.; Belch, A.R.; Reiman, T.; Pilarski, L.M.; Kirshner, J. Altered Expression of Fibronectin and Collagens I and IV in Multiple Myeloma and Monoclonal Gammopathy of Undetermined Significance. *J. Histochem. Cytochem.* **2009**, *57*, 239–247. [CrossRef]
183. Fei, M.; Hang, Q.; Hou, S.; Ruan, C. Cell Adhesion to Fibronectin Down-Regulates the Expression of Spy1 and Contributes to Drug Resistance in Multiple Myeloma Cells. *Int. J. Hematol.* **2013**, *98*, 446–455. [CrossRef]
184. Burwick, N.; Sharma, S. Glucocorticoids in Multiple Myeloma: Past, Present, and Future. *Ann. Hematol.* **2019**, *98*, 19–28. [CrossRef] [PubMed]
185. Chen, D.; Frezza, M.; Schmitt, S.; Kanwar, J.; Dou, Q.P. Bortezomib as the First Proteasome Inhibitor Anticancer Drug: Current Status and Future Perspectives. *Curr. Cancer Drug Targets* **2011**, *11*, 239–253. [CrossRef]
186. Ferrarini, M.; Steimberg, N.; Ponzoni, M.; Belloni, D.; Berenzi, A.; Girlanda, S.; Caligaris-Cappio, F.; Mazzoleni, G.; Ferrero, E. Ex-Vivo Dynamic 3-D Culture of Human Tissues in the RCCSTM Bioreactor Allows the Study of Multiple Myeloma Biology and Response to Therapy. *PLoS ONE* **2013**, *8*, e71613. [CrossRef]
187. Spelat, R.; Ferro, F.; Contessotto, P.; Warren, N.J.; Marsico, G.; Armes, S.P.; Pandit, A. A Worm Gel-Based 3D Model to Elucidate the Paracrine Interaction between Multiple Myeloma and Mesenchymal Stem Cells. *Mater. Today Bio* **2020**, *5*, 100040. [CrossRef]
188. Wada, A.; Ito, A.; Iitsuka, H.; Tsuneyama, K.; Miyazono, T.; Murakami, J.; Shibahara, N.; Sakurai, H.; Saiki, I.; Nakayama, T.; et al. Role of Chemokine CX3CL1 in Progression of Multiple Myeloma via CX3CR1 in Bone Microenvironments. *Oncol. Rep.* **2015**, *33*, 2935–2939. [CrossRef]
189. Furukawa, M.; Ohkawara, H.; Ogawa, K.; Ikeda, K.; Ueda, K.; Shichishima-Nakamura, A.; Ito, E.; Imai, J.; Yanagisawa, Y.; Honma, R.; et al. Autocrine and Paracrine Interactions between Multiple Myeloma Cells and Bone Marrow Stromal Cells by Growth Arrest-Specific Gene 6 Cross-Talk with Interleukin-6. *J. Biol. Chem.* **2017**, *292*, 4280–4292. [CrossRef]
190. Piddock, R.E.; Marlein, C.R.; Abdul-Aziz, A.; Shafat, M.S.; Auger, M.J.; Bowles, K.M.; Rushworth, S.A. Myeloma-Derived Macrophage Inhibitory Factor Regulates Bone Marrow Stromal Cell-Derived IL-6 via c-MYC. *J. Hematol. Oncol.* **2018**, *11*, 66. [CrossRef] [PubMed]
191. Papadimitriou, K.; Kostopoulos, I.V.; Tsopanidou, A.; Orogas-Stavrou, N.; Kastiris, E.; Tsitsilonis, O.; Dimopoulos, M.A.; Terpos, E. Ex Vivo Models Simulating the Bone Marrow Environment and Predicting Response to Therapy in Multiple Myeloma. *Cancers* **2020**, *12*, 2006. [CrossRef] [PubMed]
192. Aldinucci, D.; Celegato, M.; Casagrande, N. Microenvironmental Interactions in Classical Hodgkin Lymphoma and Their Role in Promoting Tumor Growth, Immune Escape and Drug Resistance. *Cancer Lett.* **2016**, *380*, 243–252. [CrossRef] [PubMed]
193. Miranda-Filho, A.; Piñeros, M.; Znaor, A.; Marcos-Gragera, R.; Steliarova-Foucher, E.; Bray, F. Global Patterns and Trends in the Incidence of Non-Hodgkin Lymphoma. *Cancer Causes Control.* **2019**, *30*, 489–499. [CrossRef] [PubMed]
194. Tarte, K. Role of the Microenvironment across Histological Subtypes of NHL. *Hematology* **2017**, *2017*, 610–617. [CrossRef]
195. Kumar, D.; Xu, M.L. Microenvironment Cell Contribution to Lymphoma Immunity. *Front. Oncol.* **2018**, *8*, 288. [CrossRef] [PubMed]

196. Fowler, N.H.; Cheah, C.Y.; Gascoyne, R.D.; Gribben, J.; Neelapu, S.S.; Ghia, P.; Bollard, C.; Ansell, S.; Curran, M.; Wilson, W.H.; et al. Role of the Tumor Microenvironment in Mature B-Cell Lymphoid Malignancies. *Haematologica* **2016**, *101*, 531–540. [[CrossRef](#)] [[PubMed](#)]
197. Alizadeh, A.A.; Gentles, A.J.; Alencar, A.J.; Liu, C.L.; Kohrt, H.E.; Houot, R.; Goldstein, M.J.; Zhao, S.; Natkunam, Y.; Advani, R.H.; et al. Prediction of Survival in Diffuse Large B-Cell Lymphoma Based on the Expression of 2 Genes Reflecting Tumor and Microenvironment. *Blood* **2011**, *118*, 1350–1358. [[CrossRef](#)]
198. Pizzi, M.; Boi, M.; Bertoni, F.; Inghirami, G. Emerging Therapies Provide New Opportunities to Reshape the Multifaceted Interactions between the Immune System and Lymphoma Cells. *Leukemia* **2016**, *30*, 1805–1815. [[CrossRef](#)]
199. Yao, Z.; Deng, L.; Xu-Monette, Z.Y.; Manyam, G.C.; Jain, P.; Tzankov, A.; Visco, C.; Bhagat, G.; Wang, J.; Dybkaer, K.; et al. Concordant Bone Marrow Involvement of Diffuse Large B-Cell Lymphoma Represents a Distinct Clinical and Biological Entity in the Era of Immunotherapy. *Leukemia* **2017**, *32*, 353–363. [[CrossRef](#)] [[PubMed](#)]
200. Zhong, W.; Zhu, Z.; Xu, X.; Zhang, H.; Xiong, H.; Li, Q.; Wei, Y. Human Bone Marrow-Derived Mesenchymal Stem Cells Promote the Growth and Drug-Resistance of Diffuse Large B-Cell Lymphoma by Secreting IL-6 and Elevating IL-17A Levels. *J. Exp. Clin. Cancer Res.* **2019**, *38*, 1–17. [[CrossRef](#)]
201. Barozzi, D.; Scielzo, C. Emerging Strategies in 3D Culture Models for Hematological Cancers. *Hemasphere* **2023**, *7*, E932. [[CrossRef](#)] [[PubMed](#)]
202. Bahlmann, L.C.; Xue, C.; Chin, A.A.; Skirzynska, A.; Lu, J.; Thériault, B.; Uehling, D.; Yerofeyeva, Y.; Peters, R.; Liu, K.; et al. Targeting Tumour-Associated Macrophages in Hodgkin Lymphoma Using Engineered Extracellular Matrix-Mimicking Cryogels. *Biomaterials* **2023**, *297*, 122121. [[CrossRef](#)] [[PubMed](#)]
203. Mannino, R.G.; Santiago-Miranda, A.N.; Pradhan, P.; Qiu, Y.; Mejias, J.C.; Neelapu, S.S.; Roy, K.; Lam, W.A. 3D Microvascular Model Recapitulates the Diffuse Large B-Cell Lymphoma Tumor Microenvironment in Vitro. *Lab Chip* **2017**, *17*, 407–414. [[CrossRef](#)] [[PubMed](#)]
204. Aoki, Y.; Tosato, G. Vascular Endothelial Growth Factor/Vascular Permeability Factor in the Pathogenesis of Primary Effusion Lymphomas. *Leuk. Lymphoma* **2001**, *41*, 229–237. [[CrossRef](#)] [[PubMed](#)]
205. Pixley, F.J.; Stanley, E.R. CSF-1 Regulation of the Wandering Macrophage: Complexity in Action. *Trends Cell Biol.* **2004**, *14*, 628–638. [[CrossRef](#)] [[PubMed](#)]
206. Ceccato, J.; Piazza, M.; Pizzi, M.; Manni, S.; Piazza, F.; Caputo, I.; Cinetto, F.; Pisoni, L.; Trojan, D.; Scarpa, R.; et al. A Bone-Based 3D Scaffold as an in-Vitro Model of Microenvironment–DLBCL Lymphoma Cell Interaction. *Front. Oncol.* **2022**, *12*, 947823. [[CrossRef](#)]
207. Mastini, C.; Campisi, M.; Patrucco, E.; Mura, G.; Ferreira, A.; Costa, C.; Ambrogio, C.; Germena, G.; Martinengo, C.; Peola, S.; et al. Targeting CCR7-PI3K γ Overcomes Resistance to Tyrosine Kinase Inhibitors in ALK-Rearranged Lymphoma. *Sci. Transl. Med.* **2023**, *15*, eabo3826. [[CrossRef](#)]
208. Colmone, A.; Amorim, M.; Pontier, A.L.; Wang, S.; Jablonski, E.; Sipkins, D.A. Leukemic Cells Create Bone Marrow Niches That Disrupt the Behavior of Normal Hematopoietic Progenitor Cells. *Science* **2008**, *322*, 1861–1865. [[CrossRef](#)]
209. Morrison, S.J.; Scadden, D.T. The Bone Marrow Niche for Haematopoietic Stem Cells. *Nature* **2014**, *505*, 327–334. [[CrossRef](#)]

Disclaimer/Publisher’s Note: The statements, opinions and data contained in all publications are solely those of the individual author(s) and contributor(s) and not of MDPI and/or the editor(s). MDPI and/or the editor(s) disclaim responsibility for any injury to people or property resulting from any ideas, methods, instructions or products referred to in the content.