

Gravitational effects in a superconducting film struck by a laser pulse

Original

Gravitational effects in a superconducting film struck by a laser pulse / Ummarino, G. A.; Gallerati, A.. - In: EUROPEAN PHYSICAL JOURNAL. C, PARTICLES AND FIELDS. - ISSN 1434-6052. - 84:2(2024). [10.1140/epjc/s10052-024-12506-1]

Availability:

This version is available at: 11583/2986230 since: 2024-02-22T09:41:48Z

Publisher:

Springer

Published

DOI:10.1140/epjc/s10052-024-12506-1

Terms of use:

This article is made available under terms and conditions as specified in the corresponding bibliographic description in the repository

Publisher copyright

(Article begins on next page)



Gravitational effects in a superconducting film struck by a laser pulse

G. A. Ummarino^a , A. Gallerati^b 

Dipartimento di Scienza Applicata e Tecnologia, Politecnico di Torino, corso Duca degli Abruzzi 24, 10129 Turin, Italy

Received: 22 November 2023 / Accepted: 30 January 2024
© The Author(s) 2024

Abstract We study the local interaction of the gravitational field with a superfluid condensate. To this end, we exploit the Ginzburg–Landau formalism with generalized Maxwell fields. The analysis shows that a slight local alteration of the gravitational field in a thin superconducting film can be achieved by laser pulses with particular characteristics.

1 Introduction

In the classical theory of gravitation, as well as in general relativity, the local gravitational field cannot be affected by any medium or device of reasonable density and size. The situation changes, as shown theoretically by Modanese [1, 2], if the stress–energy tensor is subjected to an appropriate contribution from a suitable macroscopic quantum system (a superconductor or a more general superfluid condensate).

In previous works, we have already studied the possibility that supercondensate systems can locally affect the gravitational field [3–8]. From an experimental point of view, observable phenomena require a sufficiently long time scale and intensity of the interplay. Our research is then aimed at studying particularly favorable situations, where the intensity of the effect and its duration are maximized. In this regard, we are going to explore the effects of particular electromagnetic fields on a supercondensate immersed in a weak gravitational field. With respect to our previous analyses, we will exploit the additional effects of incident laser beams, bringing the system into a more convenient condition for experimental observations.

As one might expect, the increase in system complexity is reflected in troubles with the mathematical formalism describing the interplay. To study the new setting with a tractable mathematical formulation, we will consider a

simple system consisting of a thin superconducting film, with thickness smaller than the superconductive penetration depth. The latter film is then hit, orthogonally to its center, by a laser beam with suitable time-dependent frequency and intensity. This will generate an external vector potential and associated generalized electric field, driving the effective interaction between the supercondensate and the local gravitational field. The chosen setup allows to neglect the spatial dependence of the physical quantities involved, so that the behavior of the system can be described in terms of time-dependent differential equations of the first order. This also provides a simpler framework in which to determine the most favorable situation for a localized interaction with the gravitational field.

The paper is organized as follows. In Sect. 2 we briefly describe the gravito-Maxwell formalism, giving rise to the generalized Maxwell fields. In Sect. 3 we give an explicit formulation for the physical interaction by means of a generalized time-dependent Ginzburg Landau (TDGL) theory, taking into account the effects of the laser pulses. In Sect. 4 we analyse the experimental predictions about the local gravitational affection and study how to determine the most favorable situation for a macroscopic effect; this, in turn, requires an optimization of the input parameters in the Ginzburg–Landau equations, in order to maximize the interaction. Finally, in Sect. 5 we summarize our results and give some insights about possible future developments.

2 Gravito-Maxwell formalism

Our starting point for a well-defined model, leading to explicit experimental predictions, is the appearance of generalized fields and potentials in superconductors, induced by the presence of a local gravitational field coupled to the supercondensate [9–21]. The latter phenomenon can be suitably

^ae-mail: giovanni.ummarino@polito.it

^be-mail: antonio.gallerati@polito.it (corresponding author)

characterized by an effective model, where the precise definition of the generalized fields emerge from a weak-field expansion for the Earth local gravitational field. In the following, we briefly summarize the mathematical formulation of this gravito-Maxwell approach [3,22].

Let us consider a weak gravitational background, where the (nearly-flat) spacetime metric $g_{\mu\nu}$ is expressed as

$$g_{\mu\nu} \simeq \eta_{\mu\nu} + h_{\mu\nu}, \tag{1}$$

with $\eta_{\mu\nu} = \text{diag}(-1, +1, +1, +1)$ and where $h_{\mu\nu}$ is a small perturbation of the flat Minkowski spacetime.¹ If we now introduce the symmetric traceless tensor

$$\bar{h}_{\mu\nu} = h_{\mu\nu} - \frac{1}{2} \eta_{\mu\nu} h, \tag{2}$$

with $h = h^\sigma{}_\sigma$, it can be shown that the Einstein equations in the harmonic De Donder gauge $\partial^\mu \bar{h}_{\mu\nu} \simeq 0$ can be rewritten, in linear approximation, as [3–6,23,24]

$$R_{\mu\nu} - \frac{1}{2} g_{\mu\nu} R = \partial^\rho \mathcal{G}_{\mu\nu\rho} = 8\pi G T_{\mu\nu}, \tag{3}$$

having also defined the tensor

$$\mathcal{G}_{\mu\nu\rho} \equiv \partial_{[\nu} \bar{h}_{\rho]\mu} + \partial^\sigma \eta_{\mu[\rho} \bar{h}_{\nu]\sigma} \simeq \partial_{[\nu} \bar{h}_{\rho]\mu}. \tag{4}$$

We then introduce the fields [3,13]

$$\begin{aligned} \mathbf{E}_g &= -\frac{1}{2} \mathcal{G}_{00i} = -\frac{1}{2} \partial_{[0} \bar{h}_{i]0}, \\ \mathbf{A}_g &= \frac{1}{4} \bar{h}_{0i}, \quad \mathbf{B}_g = \frac{1}{4} \varepsilon_i{}^{jk} \mathcal{G}_{0jk}, \end{aligned} \tag{5}$$

for which we get, restoring physical units, the set of equations [3,4,13,25]

$$\begin{aligned} \nabla \cdot \mathbf{E}_g &= -4\pi G \rho_g, \quad \nabla \cdot \mathbf{B}_g = 0, \\ \nabla \times \mathbf{E}_g &= -\frac{\partial \mathbf{B}_g}{\partial t}, \quad \nabla \times \mathbf{B}_g = -4\pi G \frac{1}{c^2} \mathbf{j}_g + \frac{1}{c^2} \frac{\partial \mathbf{E}_g}{\partial t}, \end{aligned} \tag{6}$$

having defined, in a comoving reference frame, the mass density $\rho_g \equiv T_{00}$ and the mass current density $\mathbf{j}_g \equiv -T_{0i}$.² The above equations have the same formal structure of the Maxwell equations, with \mathbf{E}_g and \mathbf{B}_g gravitoelectric and gravitomagnetic field, respectively.

Generalized fields and equations. Now we introduce generalized electric/magnetic fields, scalar and vector potentials, featuring both electromagnetic and gravitational contributions [3,4,13,26]:

$$\mathbf{E} = \mathbf{E}_e + \frac{m}{e} \mathbf{E}_g, \quad \mathbf{B} = \mathbf{B}_e + \frac{m}{e} \mathbf{B}_g,$$

¹ Here we work in the ‘mostly plus’ convention and natural units $c = \hbar = 1$.

² The latter identifications differ by a sign with respect to our previous works, and determine minus signs in (6) and subsequent (8).

$$\phi = \phi_e + \frac{m}{e} \phi_g, \quad \mathbf{A} = \mathbf{A}_e + \frac{m}{e} \mathbf{A}_g, \tag{7}$$

where m and e identify the mass and electron charge, respectively. The generalized Maxwell equations for the new fields read [3–6,13,24]:

$$\begin{aligned} \nabla \cdot \mathbf{E} &= \left(\frac{1}{\varepsilon_0} - \frac{1}{\varepsilon_g} \right) \rho, \quad \nabla \cdot \mathbf{B} = 0, \\ \nabla \times \mathbf{E} &= -\frac{\partial \mathbf{B}}{\partial t}, \quad \nabla \times \mathbf{B} = (\mu_0 - \mu_g) \mathbf{j} + \frac{1}{c^2} \frac{\partial \mathbf{E}}{\partial t}, \end{aligned} \tag{8}$$

where ε_0 and μ_0 are the vacuum electric permittivity and magnetic permeability. In the above equations, ρ and \mathbf{j} identify the electric charge density and electric current density, respectively, while the mass density and the mass current density vector can be expressed in terms of the latter as

$$\rho_g = \frac{m}{e} \rho, \quad \mathbf{j}_g = \frac{m}{e} \mathbf{j}, \tag{9}$$

while the vacuum *gravitational* permittivity ε_g and permeability μ_g read

$$\varepsilon_g = \frac{1}{4\pi G} \frac{e^2}{m^2}, \quad \mu_g = \frac{4\pi G}{c^2} \frac{m^2}{e^2}. \tag{10}$$

3 The model

3.1 Time-dependent Ginzburg–Landau formulation

Let us consider a superconducting sample on the Earth surface, in the presence of an external magnetic field \mathbf{B}_0 . The standard Ginzburg–Landau equations describing the system can be written as [27–29]:

$$\begin{aligned} \frac{\hbar^2}{2m_\star} \left(i \nabla + \frac{2e}{\hbar} \mathbf{A} \right)^2 \psi - a \psi + b |\psi|^2 \psi \\ = -\frac{\hbar^2}{2m_\star \mathcal{D}} \left(\frac{\partial}{\partial t} + \frac{2ie}{\hbar} \phi \right) \psi, \end{aligned} \tag{11a}$$

$$\nabla \times \nabla \times \mathbf{A} - \nabla \times \mathbf{B}_0 = \mu_0 (\mathbf{j}_n + \mathbf{j}_s), \tag{11b}$$

where m_\star is the mass of a Cooper pair, \mathcal{D} the diffusion coefficient, σ the conductivity in the normal phase. We already pointed out that the interaction with the local weak gravitational field leads to the appearance of effective generalized Maxwell fields (7), so the above equation refer to generalized external magnetic field \mathbf{B}_0 and vector potential \mathbf{A} , featuring both electromagnetic and gravitational contributions. The a and b coefficients read

$$a \equiv a(T) = a_0 (T - T_c), \quad b \equiv b(T_c), \tag{12}$$

a_0, b being positive constants. The contributions related to the normal current and supercurrent densities can be explicitly

written as

$$\begin{aligned} \mathbf{j}_n &= -\sigma \left(\frac{\partial \mathbf{A}}{\partial t} + \nabla \phi \right), \\ \mathbf{j}_s &= -i \hbar \frac{e}{m_\star} (\psi^* \nabla \psi - \psi \nabla \psi^*) - \frac{4e^2}{m_\star} |\psi|^2 \mathbf{A}. \end{aligned} \tag{13}$$

The boundary and initial conditions are

$$\left. \begin{aligned} \left(i \nabla \psi + \frac{2e}{\hbar} \mathbf{A} \psi \right) \cdot \mathbf{n} &= 0 \\ \nabla \times \mathbf{A} \cdot \mathbf{n} &= \mathbf{B}_0 \cdot \mathbf{n} \\ \mathbf{A} \cdot \mathbf{n} &= 0 \end{aligned} \right\} \text{on } \partial\Omega \times (0, t),$$

$$\left. \begin{aligned} \psi(x, 0) &= \psi_0(x) \\ \mathbf{A}(x, 0) &= \mathbf{A}_0(x) \end{aligned} \right\} \text{on } \Omega, \tag{14}$$

where $\partial\Omega$ is the boundary of a smooth and simply connected domain in \mathbb{R}^N . We denote by \mathbf{A}_0 and ϕ_0 the external vector and scalar potentials, coinciding with the internal values when the sample is in the normal state and the material is very weakly diamagnetic. Finally, $\psi_0(x)$ is the order parameter in the unperturbed superfluid state.

Dimensionless Ginzburg–Landau equations. Let us put ourselves in the Coulomb gauge $\nabla \cdot \mathbf{A} = 0$ so that, when \mathbf{B}_0 is uniform,

$$\nabla^2 \mathbf{A} = -\mu_0 (\mathbf{j}_n + \mathbf{j}_s). \tag{15}$$

In order to write Eqs. (11) in a dimensionless form, we introduce the quantities

$$\begin{aligned} \psi_0^2(T) &= \frac{|a(T)|}{b}, \quad \xi(T) = \frac{\hbar}{\sqrt{2 m_\star |a(T)|}}, \\ \lambda(T) &= \sqrt{\frac{b m_\star}{4 \mu_0 |a(T)| e^2}}, \quad k = \frac{\lambda(T)}{\xi(T)}, \\ \tau(T) &= \frac{\lambda^2(T)}{\mathcal{D}}, \quad \eta = \mu_0 \sigma \mathcal{D}, \\ B_C(T) &= \sqrt{\frac{\mu_0 |a(T)|^2}{b}} = \frac{\hbar}{2\sqrt{2} e \lambda(T) \xi(T)}, \end{aligned} \tag{16}$$

where $\lambda(T)$, $\xi(T)$ and $B_C(T)$ are the penetration depth, coherence length and thermodynamic critical field, respectively. We also define the dimensionless quantities

$$t' = \frac{t}{\tau}, \quad x' = \frac{x}{\lambda}, \quad y' = \frac{y}{\lambda}, \quad z' = \frac{z}{\lambda}, \quad \psi' = \frac{\psi}{\psi_0}, \tag{17}$$

and the dimensionless potentials, fields and currents can be then expressed as:

$$\begin{aligned} \mathbf{A}' &= \frac{\mathbf{A} k}{\sqrt{2} B_C \lambda}, \quad \phi' = \frac{\phi k}{\sqrt{2} B_C \mathcal{D}}, \quad \mathbf{E}' = \frac{\mathbf{E} \lambda k}{\sqrt{2} B_C \mathcal{D}}, \\ \mathbf{B}' &= \frac{\mathbf{B} k}{\sqrt{2} B_C}, \quad \mathbf{j}' = \frac{\mathbf{j} \mu_0 \lambda k}{\sqrt{2} B_C}. \end{aligned} \tag{18}$$

Finally, we define the dimensionless parameter [3]

$$g_\star = \frac{\lambda(T) k m_\star g}{\sqrt{2} e B_C \mathcal{D}} \ll 1, \tag{19}$$

proportional to the Earth surface gravity acceleration g .

Using (17) and (18) in Eqs. (13) and (11) we find the dimensionless time-dependent Ginzburg–Landau (TDGL) equations in a bounded, smooth and simply connected domain in \mathbb{R}^N [27,30]³:

$$\frac{\partial \psi}{\partial t} + i \phi \psi + k^2 (|\psi|^2 - 1) \psi + (i \nabla + \mathbf{A})^2 \psi = 0, \tag{20a}$$

$$\begin{aligned} \nabla \times \nabla \times \mathbf{A} - \nabla \times \mathbf{B}_0 &= \mathbf{j}_n + \mathbf{j}_s = -\eta \left(\frac{\partial \mathbf{A}}{\partial t} + \nabla \phi \right) \\ &- \frac{i}{2} (\psi^* \nabla \psi - \psi \nabla \psi^*) - |\psi|^2 \mathbf{A}, \end{aligned} \tag{20b}$$

k , η e \mathbf{A}_0 being the three parameters describing our system. The boundary and initial conditions (14) become, in the dimensionless form,

$$\left. \begin{aligned} (i \nabla \psi + \mathbf{A} \psi) \cdot \mathbf{n} &= 0 \\ \nabla \times \mathbf{A} \cdot \mathbf{n} &= \mathbf{B}_0 \cdot \mathbf{n} \\ \mathbf{A} \cdot \mathbf{n} &= 0 \end{aligned} \right\} \text{on } \partial\Omega \times (0, t);$$

$$\left. \begin{aligned} \psi(x, 0) &= \psi_0(x) \\ \mathbf{A}(x, 0) &= \mathbf{A}_0(x) \end{aligned} \right\} \text{on } \Omega. \tag{21}$$

In the (dimensionless) Coulomb gauge, $\nabla \cdot \mathbf{A} = 0$, the above (20) read

$$\begin{aligned} \frac{\partial \psi}{\partial t} + i \phi \psi + k^2 (|\psi|^2 - 1) \psi + (-\Delta \psi + i \mathbf{A} \cdot \nabla \psi) \\ + \mathbf{A}^2 \psi = 0, \end{aligned} \tag{22a}$$

$$-\Delta \mathbf{A} = -\eta \left(\frac{\partial \mathbf{A}}{\partial t} + \nabla \phi \right) - \frac{i}{2} (\psi^* \nabla \psi - \psi \nabla \psi^*) - |\psi|^2 \mathbf{A}. \tag{22b}$$

3.2 Laser pulse

We now examine in detail the experimental setting introduced in Sect. 1 and the relevant physical implications.

Let us consider an horizontal thin superconducting film of thickness L , see Fig. 1. The origin of a cartesian reference system is put at the center of the film, at mid-thickness, with \mathbf{u}_y , \mathbf{u}_z parallel to the ground and \bar{u}_x along the vertical direction and perpendicular to the film surface. At $t = 0$, the film is struck by an orthogonal laser pulse, giving rise to an

³ From now on, we drop the primes for the sake of notational simplicity.

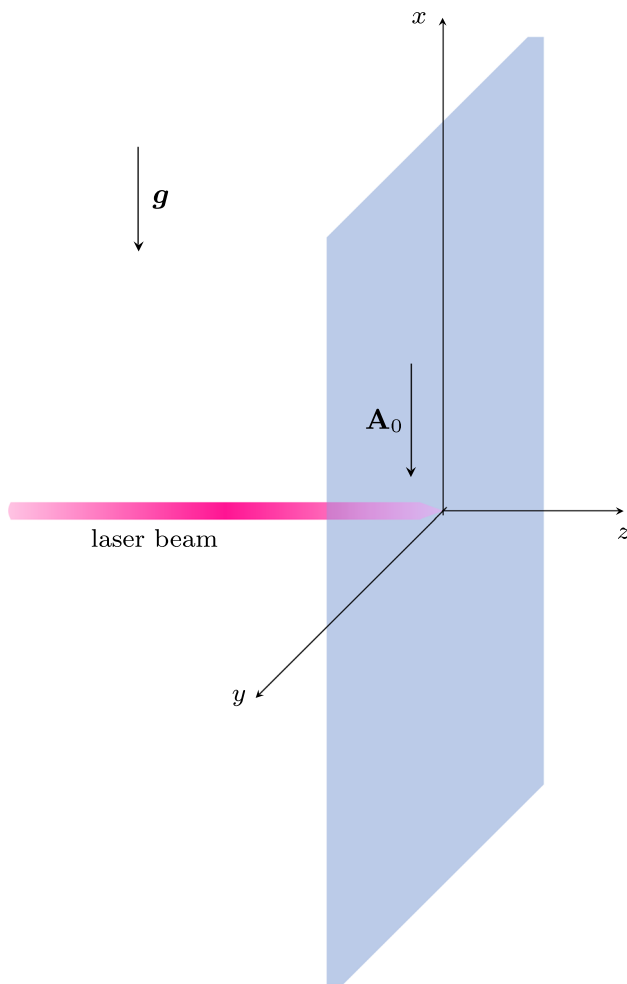


Fig. 1 Schematic representation of the system under consideration: a superconducting thin film is excited by a normally incident, x -polarized electromagnetic pulse

external electromagnetic vector potential $\mathbf{A}_0(t)$ of the form⁴

$$\mathbf{A}_0 = -A_0 \theta(t) \vec{u}_x, \tag{23}$$

where $\theta(t)$ is the Heaviside function.

Then, we consider the presence of the constant, external Earth gravitational field along the vertical direction. The latter constitutes the gravitational component $\mathbf{E}_{0g} = -g_\star \vec{u}_x$ of an external generalized electric field.⁵ We then write

$$\mathbf{E}_{0g} = E_{0g} \vec{u}_x = -g_\star \vec{u}_x = -\nabla \phi_{0g}, \tag{24}$$

with a related scalar potential $\phi_{0g} = g_\star x$.

Following the discussion of Sect. 2, the external generalized field \mathbf{E}_0 is then expressed as

$$\mathbf{E}_0 = -\nabla \phi_{0g} - \frac{\partial \mathbf{A}_0}{\partial t} = E_{0g} \vec{u}_x + A_0 \delta(t) \vec{u}_x. \tag{25}$$

⁴ From now on, we denote by a zero subscript the values of the initial external potentials and fields.

⁵ In dimensional units, $\mathbf{E}_{0g} = -\frac{m}{e} g \vec{u}_x$.

Let us now consider equations (22). In order to find an intensity scale at which possible gravitational effects in the superconductor become observable, we make the assumption that the order parameter ψ varies slowly in the spatial variables, being the film thin and the perturbations homogeneous. This in turn allows to neglect the spatial dependence of ψ [31], allowing for a simplification of (22). Equation (22a) can be then rewritten as

$$\frac{\partial \psi}{\partial t} + i \phi \psi + k^2 (|\psi|^2 - 1) \psi + A^2 \psi = 0. \tag{26}$$

In the absence of the laser pulse and neglecting the gravitational field we would have

$$k^2 (|\psi|^2 - 1) = 0, \tag{27}$$

that implies, for these conditions, $\psi = \psi_0 = 1$. We then look for general solutions inside the superconductor of the form

$$\begin{aligned} \psi(t) &= \psi_0 + \psi_1(t) + g_\star \psi_2(t), \\ A(t) &= A_1(t) + g_\star A_2(t), \\ \phi &= \phi_{0g} = g_\star x, \end{aligned} \tag{28}$$

where we stopped the expansion at first order in g_\star , being $g_\star \ll 1$. Here, $A(t)$ denotes the magnitude of the vector potential modified by the presence of the superconductor. The terms $\psi_1(t)$ and $A_1(t)$ are connected to the perturbation of the system due to the presence of the laser, while $\psi_2(t)$ and $A_2(t)$ are determined by the presence of the gravitational field. In this regard, we are interested in the laser effect on the superconducting condensate, analysing a possible enhance of the local perturbation on the gravitational field.

Let us now derive the equations for $\psi_1(t)$, $\psi_2(t)$, $A_1(t)$ and $A_2(t)$. To this end, we will analyse the contributions in the TDGL equations at different orders in g_\star .

Inserting (28) in (26) we obtain for ψ_1 the relation

$$\begin{aligned} \frac{\partial \psi_1(t)}{\partial t} + k^2 \psi_1^3(t) + 3k^2 \psi_1^2(t) + (k^2 + A_1^2(t)) \psi_1(t) \\ = -A_1^2(t), \end{aligned} \tag{29}$$

at zero-order in g_\star , with the initial condition $\psi_1(0) = 0$.

The variation of the ψ_2 component comes from the expansion at first-order in g_\star and reads

$$\begin{aligned} \frac{\partial \psi_2(t)}{\partial t} + (3k^2(1 + \psi_1(t))^2 - k^2 + A_1^2(t)) \psi_2(t) \\ = -(2A_1(t)A_2(t) + i x)(1 + \psi_1(t)). \end{aligned} \tag{30}$$

We assume that, when the laser is turned on at $t = 0$, the superconductor has already been subjected to the external static gravitational field for a sufficiently long time. This ensures that the effect of any gravitational transient on the supercondensate has already vanished [3] so that, before the laser pulse, the system is in equilibrium. We are therefore exploring physical effects other than [3, 6, 7], since the local

alteration does not arise from the transition of the sample to the superconducting state, but from its interaction with the laser pulse at subsequent times.

In order to simplify calculations, we study what happens at the center of the superconductor, corresponding to $x = 0$. This gives for ψ_2

$$\frac{\partial \psi_2(t)}{\partial t} + \left(3k^2(1 + \psi_1(t))^2 - k^2 + A_1^2(t)\right) \psi_2(t) = -2A_1(t)A_2(t)(1 + \psi_1(t)), \tag{31}$$

with the initial condition $\psi_2(0) = 0$.

Using (28) in (22b), from the zero-order in g_\star we obtain the variation of the A_1 contribution

$$\eta \frac{\partial A_1(t)}{\partial t} = -A_1(t)(1 + \psi_1(t))^2, \tag{32}$$

with the initial condition $A_1(0) = -A_0$, see (23).

Finally, from the contribution at first-order in g_\star , we find for A_2

$$\eta \left(\frac{\partial A_2(t)}{\partial t} + 1\right) = -A_2(t)(1 + \psi_1(t))^2 - 2A_1(t)\psi_2(t)(1 + \psi_1(t)), \tag{33}$$

with the initial condition $A_2(0) = -\eta$. The latter condition is found starting from Eq. (25) at first order in g_\star

$$-\frac{\partial \phi_{0g}}{\partial x} - g_\star \frac{\partial A_2}{\partial t} \Big|_{t=0} = -g_\star \Rightarrow \frac{\partial A_2}{\partial t} \Big|_{t=0} = 0, \tag{34}$$

so that from (33) we obtain

$$0 = \eta \frac{\partial A_2}{\partial t} \Big|_{t=0} = -A_2(0)(1 + \psi_1(0))^2 - 2A_1(0)\psi_2(0)(1 + \psi_1(0)) - \eta. \tag{35}$$

To solve the resulting system of four equations, we initially put in Eqs. (29) and (31) the initial conditions

$$\begin{aligned} A_1(0) &= -A_0, \\ A_2(0) &= -\eta, \end{aligned} \tag{36}$$

and then we solve for $\psi_1(t)$ and $\psi_2(t)$. Subsequently, we use the latter results to obtain $A_1(t)$ and $A_2(t)$ from Eqs. (32) and (33). The process converges already at the first iteration.

In the special case under consideration, with a laser impulse of the form (23), it is possible to find cumbersome analytical solutions for $\psi_1(t)$, $\psi_2(t)$, $A_1(t)$, $A_2(t)$, that we report in Appendix A.

4 Discussion

From a general point of view, when solving the Ginzburg–Landau equations describing our framework, it is necessary

to respect the physical prescription

$$A_0 < k, \tag{37}$$

since the condition $A_0 \geq k$ would cause the system under consideration to return to its normal state.

Figures 2 and 3 show the calculated local alteration of the gravitational field, for different values of A_0 , for two superconductors, YBCO and Pb. The former is an high critical temperature superconductor of the second type, while the latter is low critical temperature superconductor of the first type. In particular, we study the magnitude of the ratio

$$\frac{\mathbf{E} - \mathbf{E}_{0g}}{g_\star}, \tag{38}$$

where \mathbf{E}_{0g} is given by the constant contribution of the standard Earth gravitational field (24), while \mathbf{E} is given by

$$\mathbf{E} = -\nabla\phi - \frac{\partial \mathbf{A}}{\partial t}, \tag{39}$$

and represents the perturbed generalized field, affected by the presence of the superconductor, whose form is found using the solutions (28) of the Ginzburg–Landau equation.

Every variation is calculated at a sample temperature T^\star such that the ratio

$$\frac{T_c - T^\star}{T_c} \tag{40}$$

is approximately the same in the two materials. The latter T^\star is chosen so that the material is in the superconducting interval of temperatures where the Ginzburg–Landau formulation apply and a mean field approximation can be exploited. The described situation takes place for a range of temperatures close to the critical T_c , but sufficiently far from it so as to prevent the appearance of fluctuations. The results show that the local gravitational affection is maximized for values of A_0 that are close to k , and the extent of the response is similar for the two superconductors.

Restoring dimensional quantities through (18) we would find

$$A_0 \rightarrow A_0 \frac{k}{\sqrt{2} B_C \lambda} = \frac{A_0}{A_n}, \quad A_n = \frac{\sqrt{2} B_C \lambda}{k}, \tag{41}$$

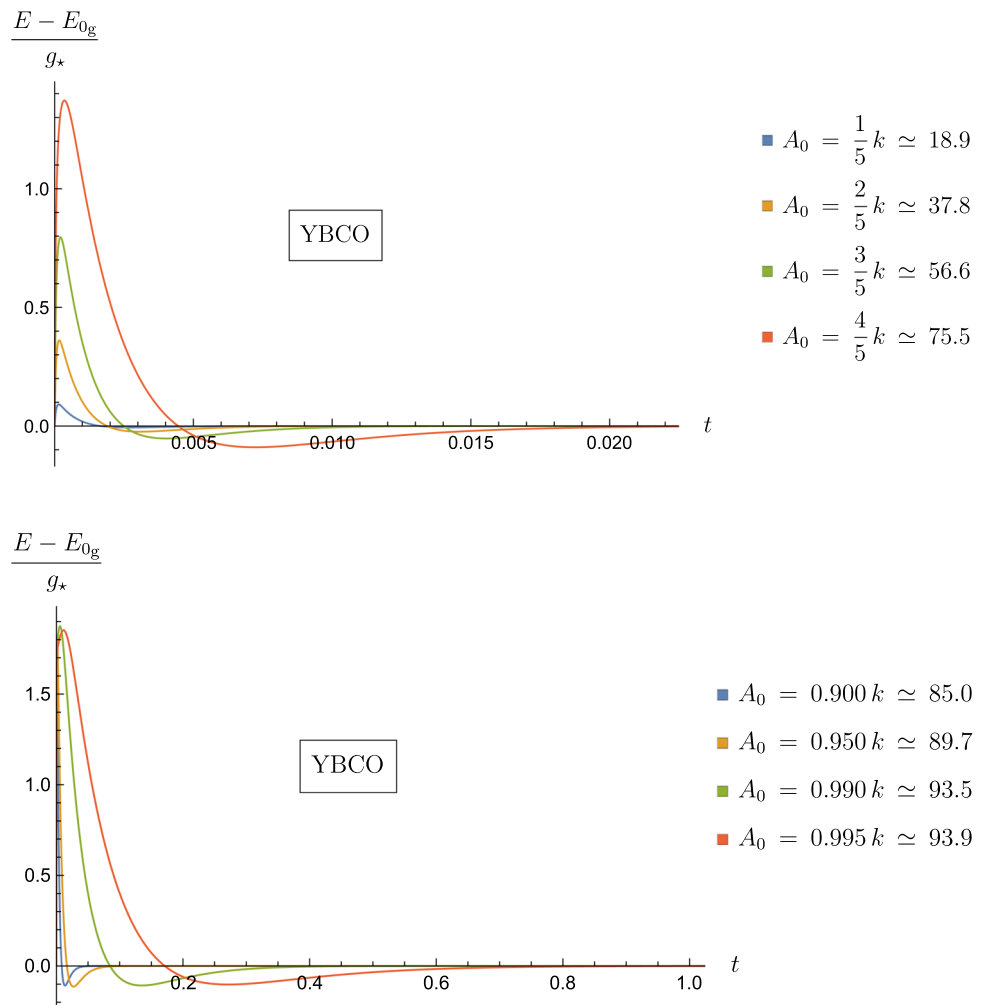
so that the dimensional version of condition (37), involving the maximum allowed value for the vector potential magnitude, is given by

$$\frac{A_0}{A_n} < k \Rightarrow A_0 < \sqrt{2} B_C \lambda = A_0^{\text{MAX}} \tag{42}$$

then depending on penetration depth and thermodynamic critical field.

Apparently, there is a great difference in the characteristic times of the phenomenon for the two superconductors. However, restoring again dimensional quantities through Eqs. (17) and (18), we roughly obtain comparable time intervals, of

Fig. 2 Gravitational field alteration as a function of time (adimensional units) for an YBCO film



the order of 10^{-9} s. The latter result can be directly obtained multiplying by time units τ (from Table 1) the time scales deduced from the plots.

We can also see from Figs. 2 and 3 that an initial time range exists where the altered gravitational field receives a positive contribution. After this phase, there is a time interval where the field is decreased with respect to the standard external intensity. Finally, the field relaxes returning to the unperturbed value.

4.1 Oscillating vector potential

Now we examine the effects originating from the presence of an oscillating laser pulse. We study the particularly simple case

$$\mathbf{A}_0(t) = A_0 \cos(\omega t) \vec{u}_x. \tag{43}$$

In this case, it is no longer possible to obtain affordable analytical solutions of the system given by the Ginzburg–Landau equations (29)–(33) for the fields (28), but the behavior of system can still be studied by numerical simulations.

In this new physical situation, the input parameters for the system are given by A_0 and ω . The latter affects not only the periodicity of the local effect, but also its intensity. The limitation (37), $A_0 < k$, still apply.

The results of the simulations are shown in Figs. 4 and 5. As in the former case, the local gravitational field in the film is subject to positive and negative variations, that in this case are periodic in accordance to the form (43) of the vector potential.

From the same figures we can also see that the intensity of the local variation of the gravitational field increases as k and ω increase. On the other hand, higher values of ω result in higher frequency rates of the oscillations: this in turn means that, from an experimental point of view, it would be more difficult to observe the phenomenon due to reduced time scales, since the average effect also tends to zero.

In view of the above discussion, the best physical setup for experimental detection involves an amplitude A_0 close to k and a value of ω that is not too large. The latter choice is dictated by the discussed difficulties in time resolution for standard measurement systems.

Fig. 3 Gravitational field alteration as a function of time (adimensional units) for a Pb film

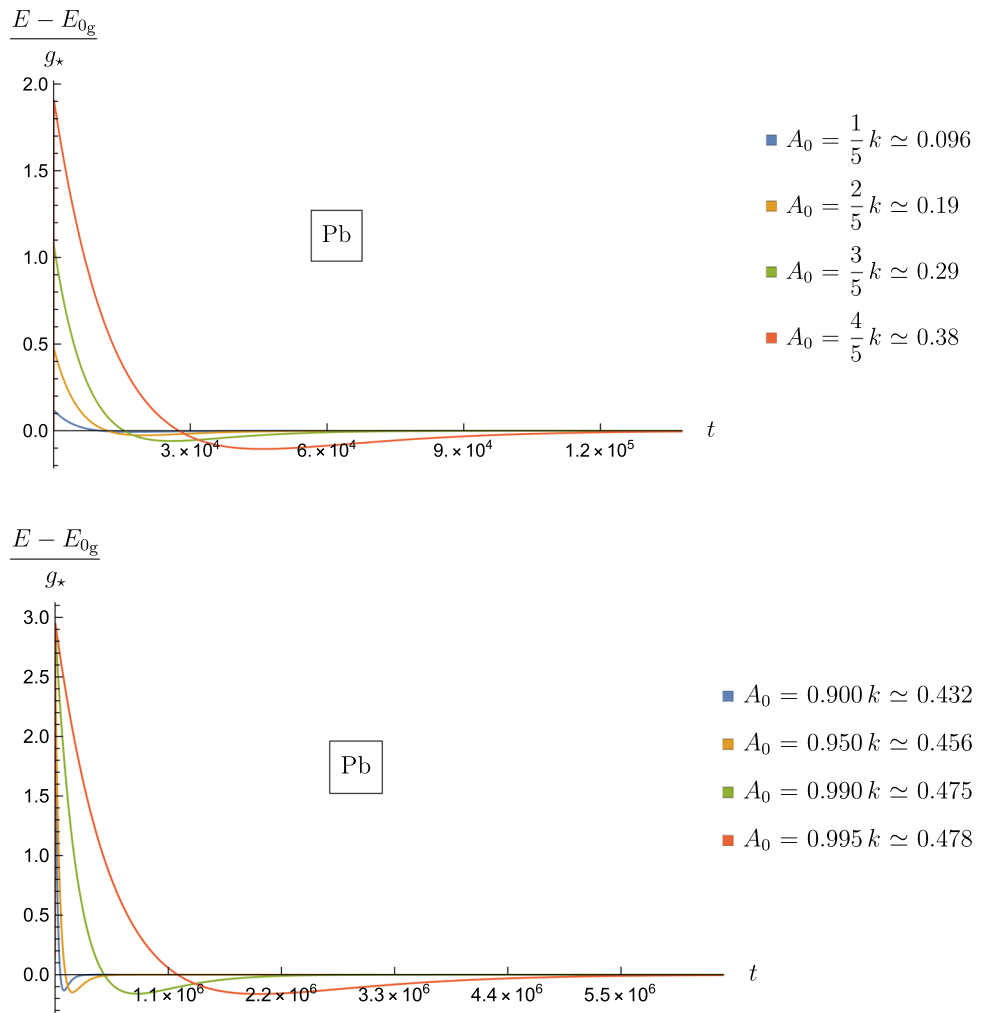


Table 1 Physical quantities related to YBCO and Pb

	YBCO	Pb
T_c	89 K	7.2 K
T^*	85 K	6.9 K
$\xi(0)$	1.8×10^{-9} m	9.0×10^{-8} m
$\xi(T^*)$	8.5×10^{-9} m	4.4×10^{-7} m
$\lambda(0)$	1.7×10^{-7} m	4.0×10^{-8} m
$\lambda(T^*)$	8.0×10^{-7} m	2.0×10^{-7} m
$B_{C_2}(0)$	61.0 T	6.5×10^{-2} T
$B_{C_2}(T^*)$	2.5×10^{-1} T	3.1×10^{-3} T
\mathcal{D}	3.2×10^{-4} m ² /s	1.0 m ² /s
k	94.4	4.8×10^{-1}
η	1.0×10^{-3}	6.6×10^3
$g_*(T^*)$	1.4×10^{-10}	1.2×10^{-16}
$A_0^{\text{MAX}}(T^*)$	2.8×10^{-7} V s/m	8.8×10^{-10} V s/m
$\tau(T^*)$	5.0×10^{-10} s	3.2×10^{-14} s

5 Concluding remarks

In this work we have seen that suitable laser pulses can be used to maximize and amplify a local affection of the static Earth’s gravitational field, in the simultaneous presence of a superconducting condensate. In particular, we have considered the vector potential associated to the laser pulse and its interaction with a superconducting thin film. This local interplay gives rise to a generalized electric-like field, featuring a gravitational component, and its explicit form can be obtained by studying the associated Ginzburg–Landau equations. We have then compared the latter perturbed field with the unperturbed value of the Earth’s gravitational field, analysing the magnitude of the interaction and the time scales in which the phenomenon manifests itself.

A major challenge definitely consists in simultaneously optimizing the magnitude and duration of the effect, exploiting particular values of the input parameters, such as the

Fig. 4 Gravitational field alteration as a function of time (adimensional units) for an YBCO film subject to an oscillating external vector potential

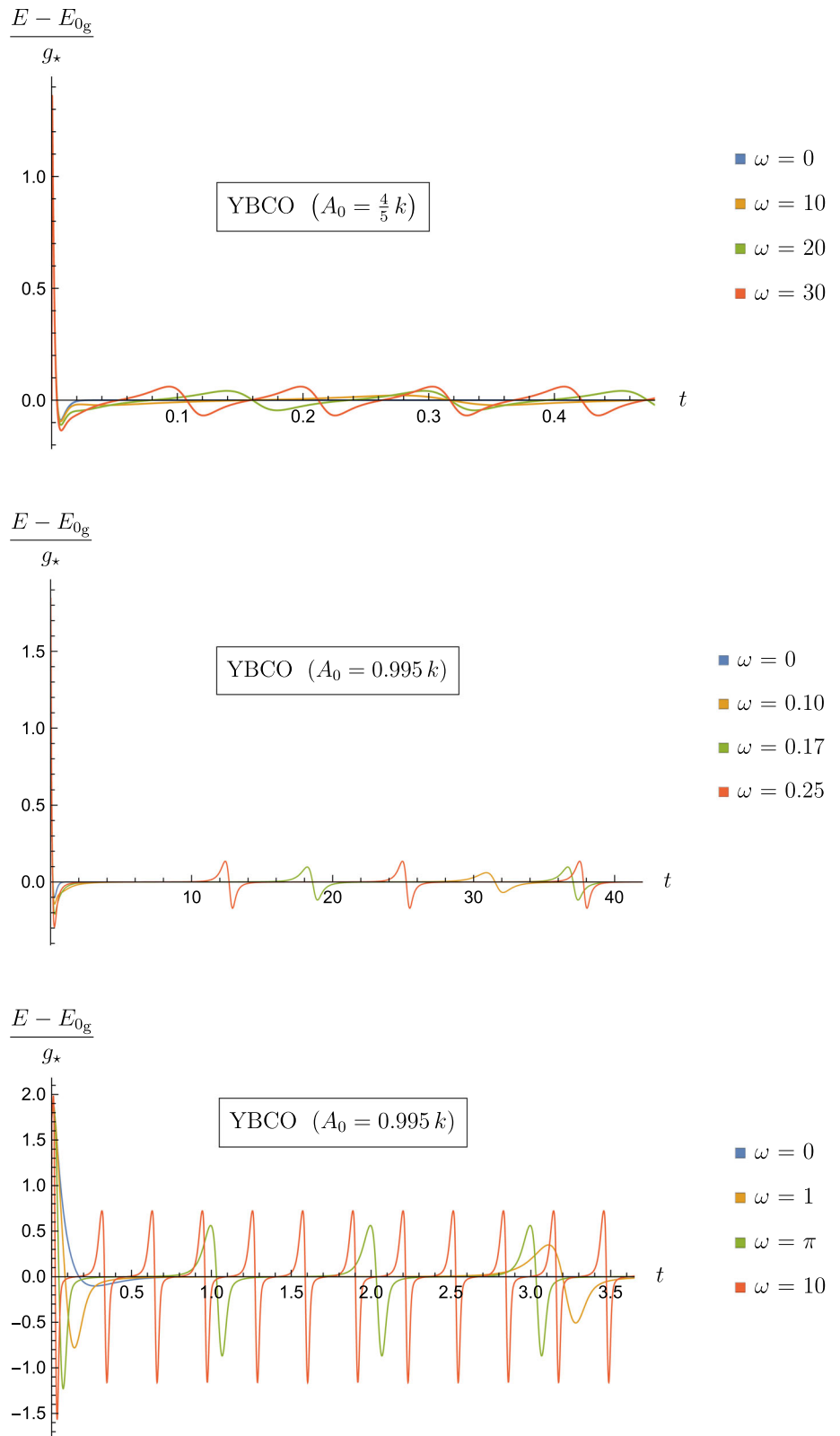
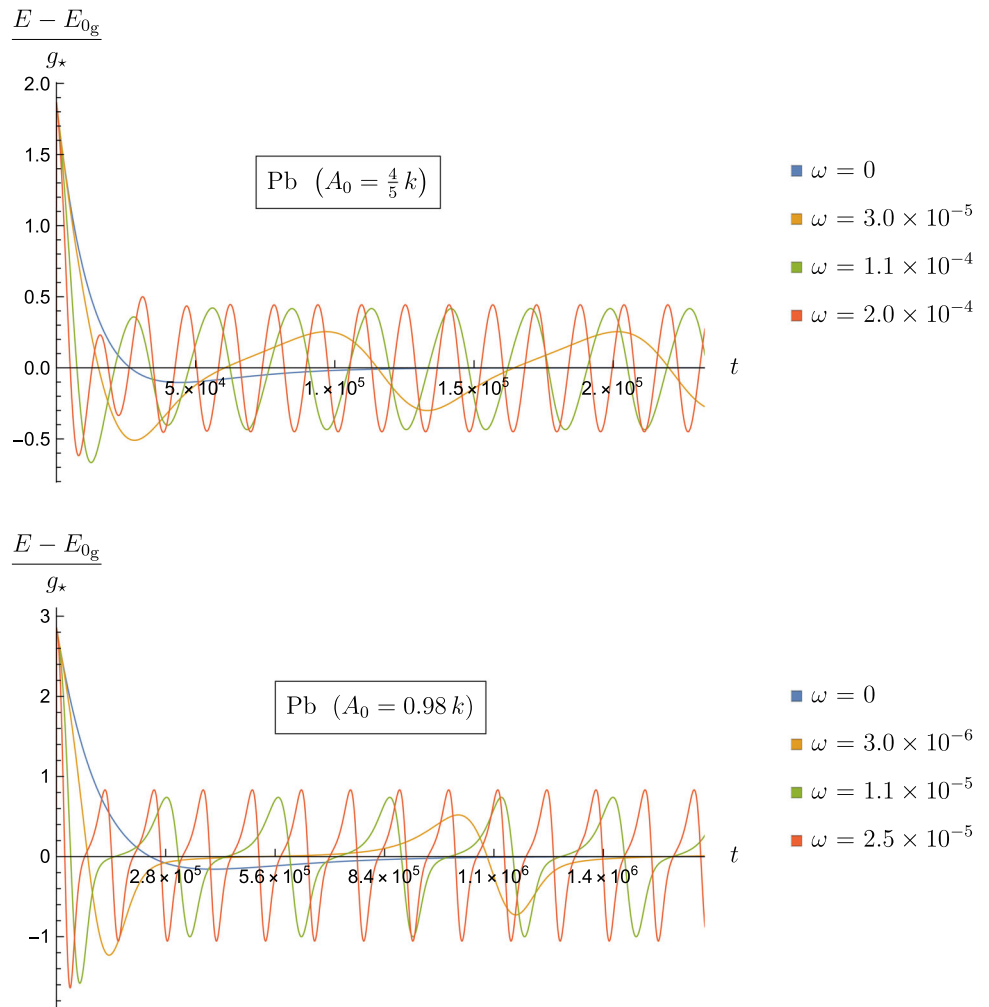


Fig. 5 Gravitational field alteration as a function of time (adimensional units) for a Pb film subject to an oscillating external vector potential



intensity of the laser pulse and the physical characteristics of the superconductors. In this regard, most of the detection difficulties reside in reduced time scales for the occurrence of the local interplay. However, recent experimental setups should be able to probe effects taking place in time intervals well below nanoseconds [32].

Acknowledgements We thank Fondazione CRT that partially supported this work for A. Gallerati.

Data Availability Statement This manuscript has no associated data or the data will not be deposited. [Authors' comment: This manuscript has no associated data.]

Open Access This article is licensed under a Creative Commons Attribution 4.0 International License, which permits use, sharing, adaptation, distribution and reproduction in any medium or format, as long as you give appropriate credit to the original author(s) and the source, provide a link to the Creative Commons licence, and indicate if changes were made. The images or other third party material in this article are included in the article's Creative Commons licence, unless indicated otherwise in a credit line to the material. If material is not included in the article's Creative Commons licence and your intended use is not permitted by statutory regulation or exceeds the permitted use, you will need to obtain permission directly from the copyright holder. To view a copy of this licence, visit <http://creativecommons.org/licenses/by/4.0/>.
 Funded by SCOAP³.

Appendix A: Analytical solutions

Here we report the analytical form of the solutions (28) to the Ginzburg–Landau equations (29)–(33) for a vector potential of the form (23):

$$\begin{aligned}
\psi_1(t) &= -1 + \sqrt{\frac{k^2 - A_0^2}{k^2 - A_0^2 \exp(-2k^2 t - 2A_0^2 t)}}, \\
\psi_2(t) &= \frac{\eta A_0}{\sqrt{k^2 - A_0^2}} \frac{-k^2 \exp(3k^2 t) + (-2A_0^4 t + k^2(1 + 2A_0^2 t)) \exp(2A_0^2 t + k^2 t)}{(k^2 \exp(2k^2 t) - A_0^2 \exp(2A_0^2 t))^{3/2}}, \\
A_1(t) &= A_0 \theta(t) \exp\left(-\int_0^t \frac{(1 + \psi_1(t))^2}{\eta} dt\right), \\
A_2(t) &= \eta \exp\left(-\int_0^t \frac{(1 + \psi_1(t))^2}{\eta} dt\right) - 2 \int_0^t A_1 \psi_2(t) (1 + \psi_1(t)) \exp\left(\int_0^t \frac{(1 + \psi_1(t))^2}{\eta} dt\right) dt. \tag{A.1}
\end{aligned}$$

References

- G. Modanese, Theoretical analysis of a reported weak gravitational shielding effect. *Europhys. Lett.* **35**, 413–418 (1996). [arXiv:hep-th/9505094](#)
- G. Modanese, Role of a ‘local’ cosmological constant in Euclidean quantum gravity. *Phys. Rev. D* **54**, 5002–5009 (1996). [arXiv:hep-th/9601160](#)
- G.A. Ummarino, A. Gallerati, Superconductor in a weak static gravitational field. *Eur. Phys. J. C* **77**(8), 549 (2017). [arXiv:1710.01267](#)
- G.A. Ummarino, A. Gallerati, Exploiting weak field gravity-Maxwell symmetry in superconductive fluctuations regime. *Symmetry* **11**(11), 1341 (2019). [arXiv:1910.13897](#)
- G.A. Ummarino, A. Gallerati, Josephson AC effect induced by weak gravitational field. *Class. Quantum Gravity* **37**(21), 217001 (2020). [arXiv:2009.04967](#)
- G.A. Ummarino, A. Gallerati, Possible alterations of local gravitational field inside a superconductor. *Entropy* **23**(2), 193 (2021). [arXiv:2102.01489](#)
- G.A. Ummarino, A. Gallerati, Superconductor in static gravitational, electric and magnetic fields with vortex lattice. *Results Phys.* **30**, 104838 (2021). [arXiv:2110.07335](#)
- A. Gallerati, G. Modanese, G. Ummarino, Interaction between macroscopic quantum systems and gravity. *Front. Phys.* **10**, 941858 (2022). [arXiv:2206.07574](#)
- G. Papini, Gravity-induced electric fields in superconductors. II *Nuovo Cimento B* **63**(2), 549–559 (1969)
- N. Li, D. Torr, Effects of a gravitomagnetic field on pure superconductors. *Phys. Rev. D* **43**(2), 457 (1991)
- J. Anandan, Gravitationally coupled electromagnetic systems and quantum interference. *Class. Quantum Gravity* **1**, L51 (1984)
- D. Torr, N. Li, Gravitoelectric-electric coupling via superconductivity. *Found. Phys. Lett.* **6**(4), 371–383 (1993)
- M. Agop, C. Buzea, P. Nica, Local gravitoelectromagnetic effects on a superconductor. *Phys. C: Supercond.* **339**(2), 120–128 (2000)
- F. Cabral, F.S.N. Lobo, Gravitational waves and electrodynamics: new perspectives. *Eur. Phys. J. C* **77**(4), 237 (2017). [arXiv:1603.08157](#)
- M. Tajmar, C. de Matos, Extended analysis of gravitomagnetic fields in rotating superconductors and superfluids. *Physica C* **420**, 56 (2005). [arXiv:gr-qc/0406006](#)
- M. Tajmar, F. Plesescu, B. Seifert, K. Marhold, Measurement of gravitomagnetic and acceleration fields around rotating superconductors. *AIP Conf. Proc.* **880**(1), 1071–1082 (2007). [arXiv:gr-qc/0610015](#)
- M. Tajmar, Electrodynamics in superconductors explained by Proca equations. *Phys. Lett. A* **372**(18), 3289–3291 (2008)
- M.L. Ruggiero, A note on the gravitoelectromagnetic analogy. *Universe* **7**(11), 451 (2021). [arXiv:2111.09008](#)
- G.Z. Toth, Energy-momentum tensor and duality symmetry of linearized gravity in the Fierz formalism. *Class. Quantum Gravity* **39**(7), 075003 (2022). [arXiv:2108.02124](#)
- N.A. Inan, J.J. Thompson, R.Y. Chiao, Interaction of gravitational waves with superconductors. *Fortschr. Phys.* **65**(6–8), 1600066 (2017). [arXiv:2207.08062](#)
- N.A. Inan, Superconductor Meissner effects for gravitoelectromagnetic fields in harmonic coordinates due to non-relativistic gravitational sources. *Front. Phys.* **10**, 854 (2022)
- A. Gallerati, G. Ummarino, Superconductors and gravity. *Symmetry* **14**, 3 (2022). [arXiv:2203.09417](#)
- A. Gallerati, Interaction between superconductors and weak gravitational field. *J. Phys. Conf. Ser.* **1690**(1), 012141 (2020). [arXiv:2101.00418](#)
- A. Gallerati, Local affection of weak gravitational field from supercondensates. *Phys. Scr.* **96**(6), 064001 (2021)
- H. Behera, Comments on gravitoelectromagnetism of Ummarino and Gallerati in “Superconductor in a weak static gravitational field” vs other versions. *Eur. Phys. J. C* **77**(12), 822 (2017). [arXiv:1709.04352](#)
- M. Agop, P. Ioannou, F. Diaconu, Some implications of gravitational superconductivity. *Prog. Theor. Phys.* **104**(4), 733–742 (2000)
- Q. Tang, S. Wang, Time dependent Ginzburg–Landau equations of superconductivity. *Phys. D: Nonlinear Phenom.* **88**(3–4), 139–166 (1995)
- J. Fleckinger-Pellé, H.G. Kaper, P. Takáč, Dynamics of the Ginzburg–Landau equations of superconductivity. *Nonlinear Anal.: Theory Methods Appl.* **32**(5), 647–665 (1998)
- N. Kopnin, E. Thuneberg, Time-dependent Ginzburg–Landau analysis of inhomogeneous normal-superfluid transitions. *Phys. Rev. Lett.* **83**(1), 116 (1999)
- F.H. Lin, Q. Du, Ginzburg–Landau vortices: dynamics, pinning, and hysteresis. *SIAM J. Math. Anal.* **28**(6), 1265–1293 (1997)
- K.A.F. Charles, W. Robson, F. Biancalana, Giant ultrafast Kerr effect in superconductors. *Phys. Rev. B* **95**, 214504–1–214504–5 (2017)
- A. Mak, G. Shamuilov, P. Salén, D. Dunning, J. Hebling, Y. Kida, R. Kinjo, B.W. McNeil, T. Tanaka, N. Thompson et al., Attosecond single-cycle undulator light: a review. *Rep. Prog. Phys.* **82**(2), 025901 (2019)