

Incommensurability and unconventional superconductor to insulator transition in the hubbard model with bond-charge interaction

Original

Incommensurability and unconventional superconductor to insulator transition in the hubbard model with bond-charge interaction / A. A., Aligia; Anfossi, ALBERTO FRANCESCO; L., Arrachea; C., DEGLI ESPOSTI BOSCHI; A., Dobry; C., Gazza; Montorsi, Arianna; F., Ortolani; M., Torio. - In: PHYSICAL REVIEW LETTERS. - ISSN 0031-9007. - 99:20 (206401)(2007). [10.1103/PhysRevLett.99.206401]

Availability:

This version is available at: 11583/1641417 since:

Publisher:

APS

Published

DOI:10.1103/PhysRevLett.99.206401

Terms of use:

This article is made available under terms and conditions as specified in the corresponding bibliographic description in the repository

Publisher copyright

(Article begins on next page)



OPEN ACCESS

EDITED BY

Ruslan Prozorov,
Iowa State University, United States

REVIEWED BY

Krastyo Buchkov,
Georgi Nadjakov Institute of Solid State Physics
(BAS), Bulgaria
Ioan Adrian Crisan,
National Institute of Materials Physics, Romania

*CORRESPONDENCE

Daniele Torsello,
✉ daniele.torsello@polito.it

RECEIVED 10 November 2023

ACCEPTED 31 December 2023

PUBLISHED 16 January 2024

CITATION

Torsello D, Piatti E, Fracasso M, Gerbaldo R,
Gozzelino L, Yi X, Xing X, Shi Z, Daghero D and
Ghigo G (2024), Unusually weak irradiation
effects in anisotropic iron-based
superconductor $\text{RbCa}_2\text{Fe}_4\text{As}_4\text{F}_2$.
Front. Phys. 11:1336501.
doi: 10.3389/fphy.2023.1336501

COPYRIGHT

© 2024 Torsello, Piatti, Fracasso, Gerbaldo,
Gozzelino, Yi, Xing, Shi, Daghero and Ghigo.
This is an open-access article distributed under
the terms of the [Creative Commons Attribution
License \(CC BY\)](https://creativecommons.org/licenses/by/4.0/). The use, distribution or
reproduction in other forums is permitted,
provided the original author(s) and the
copyright owner(s) are credited and that the
original publication in this journal is cited, in
accordance with accepted academic practice.
No use, distribution or reproduction is
permitted which does not comply with these
terms.

Unusually weak irradiation effects in anisotropic iron-based superconductor $\text{RbCa}_2\text{Fe}_4\text{As}_4\text{F}_2$

Daniele Torsello^{1,2*}, Erik Piatti¹, Michela Fracasso^{1,2},
Roberto Gerbaldo^{1,2}, Laura Gozzelino^{1,2}, Xiaolei Yi³,
Xiangzhuo Xing⁴, Zhixiang Shi³, Dario Daghero¹ and
Gianluca Ghigo^{1,2}

¹Department of Applied Science and Technology, Politecnico di Torino, Torino, Italy, ²Istituto Nazionale di Fisica Nucleare, Sezione di Torino, Torino, Italy, ³School of Physics, Southeast University, Nanjing, China, ⁴School of Physics and Physical Engineering, Qufu Normal University, Qufu, China

We report on the effects of 3.5 MeV proton irradiation in $\text{RbCa}_2\text{Fe}_4\text{As}_4\text{F}_2$, an iron-based superconductor with unusual properties in between those of the pnictides and of the cuprate high-temperature superconductors. We studied how structural disorder introduced by ion bombardment affects the critical temperature, superfluid density and gap values by combining a coplanar waveguide resonator technique, electric transport measurements and point-contact Andreev-reflection spectroscopy. We find an unusually weak dependence of the superconducting properties on the amount of disorder in this material when compared to other iron-based superconductors under comparable irradiation conditions. The nodal multigap state exhibited by pristine $\text{RbCa}_2\text{Fe}_4\text{As}_4\text{F}_2$ is also robust against proton irradiation, with a two-band d - d model being the one that best fits the experimental data.

KEYWORDS

12442 iron-based superconductors, proton irradiation, superfluid density, order parameter symmetry, point-contact spectroscopy

1 Introduction

Ion irradiation has proven to be an extremely useful tool for the investigation of fundamental properties of superconductors [1–3]. In recent years, significant efforts have been devoted to the study of iron-based superconductors (IBSs) [4–7], hoping that understanding their pairing mechanism could lead to a comprehensive understanding of unconventional superconductivity [8]. Although this high goal is still far from being achieved, several interesting findings were reported on these intriguing materials, contributing to deepen the knowledge of the effects of disorder on the superconducting condensate and related phenomena. In particular, besides the more standard result of enhancing the vortex pinning capability [7], an irradiation-disorder-induced transition was observed between s_{\pm} and s_{++} states in two-band IBSs of the 122 family [3], that contributed to confirm the s_{\pm} state for the pristine compound, as predicted theoretically [1].

In the last few years, the attention moved to a newly discovered family of IBSs, the 12442 pnictide family [9–11], that shows some peculiar properties resembling those of the cuprates [12–15]. The 12442-type $\text{ACa}_2\text{Fe}_4\text{As}_4\text{F}_2$ (where A = K, Rb, Cs) compounds are obtained by the intergrowth of 1111-type CaFeAsF and 122-type AFe_2As_2 . While in most IBSs superconductivity emerges after the suppression of antiferromagnetic order in the

parent compound by carrier doping, the 12442 compounds are superconducting in their stoichiometric state, with a critical temperature ranging from 28 to 33 K, without the need for chemical substitution to achieve extra carrier doping. These compounds consist of alternate stacking of conducting Fe_2As_2 layers and insulating Ca_2F_2 blocks, and contrary to other IBSs, they have double FeAs layers between neighboring insulating layers, thus mimicking the case of double CuO_2 layers in the cuprates. As the cuprates (and contrary to 122 and 1144 IBSs), these compounds show a large anisotropy in the upper critical field and penetration depth [16]. As for the pairing symmetry and gap structure, to date it is still controversial whether in 12442 there exist gap nodes or not, and, in the former case, whether nodal d -wave-like or accidental nodal s -wave gaps should be expected. Recently, a study of the gap structure of $\text{RbCa}_2\text{Fe}_4\text{As}_4\text{F}_2$ (Rb-12442) led to the identification of two gaps with signatures of d -wave-like nodal behavior [16]. Data are well described by a two-band d - d state with symmetry-imposed nodes, since they persist upon Ni doping. Within this framework, the need emerges to investigate the role of disorder of nonchemical origin, e.g., induced by ion irradiation. In fact, in this case it is possible to compare measurements on the very same crystals before and after irradiation, i.e., after the introduction of structural defects with defined shape and dimensions, and controlled density. This could help in completing the picture and give hints toward an overall interpretation of the superconductivity mechanism in the 12442 IBSs.

In this work, we report on the effects of disorder introduced via 3.5 MeV proton irradiation on the critical temperature, superfluid density and gap values of Rb-12442 single crystals, investigated by a combination of the complementary techniques of electric transport measurements, coplanar waveguide resonator (CPWR) measurements and point-contact Andreev-reflection spectroscopy (PCARS).

Transport measurements allow the determination of the resistivity as a function of temperature, of the residual resistivity ratio RRR, and of the superconducting transition temperature T_c^p , and thus provide information on how irradiation affects the scattering of electrons by defects and the onset of the superconducting state.

CPWR measurements allow a direct determination of the London penetration depth λ_L as a function of temperature, and consequently of the superfluid density ρ_s and of the critical temperature T_c^λ at which it vanishes. The temperature dependence of ρ_s provides indications on the symmetry of the superconducting gap(s), and in particular on whether unpaired quasiparticles persist down to the lowest temperatures, which is associated to an incomplete gapping of the Fermi surface typical for example, of d -wave superconductivity.

PCARS allows a direct determination of the amplitude and symmetry of the superconducting gap(s) and of the temperature at which they close, T_c^A , by measuring the differential conductance dI/dV of a small (point-like) contact between a normal metal (N) and the superconductor under study (S), as a function of the bias voltage V applied across the NS junction [17–19]. The absence of an insulating barrier between the N and S banks enables Andreev reflection at the interface [17–19], which enhances the dI/dV for $V \leq \Delta/e$ (Δ being the superconducting gap) and makes it sensitive to the coherence of the superconducting condensate—unlike tunnelling

spectroscopy that probes the density of states of unpaired quasiparticles. Finally, the dependence of the critical temperature (T_c^p or T_c^λ) on the disorder (which is directly related to the symmetry of the energy gap in single-band systems) can be compared to that observed in other, more widely-studied IBS systems.

The conclusion of this extensive study is that the critical temperature of 12442 decreases on increasing disorder in an unusually weak (if compared to other IBSs) and nonlinear manner, while the London penetration depth increases in an approximately linear way. The joint analysis of PCARS spectra and CPWR measurements supports the existence of nodes in at least one gap, and most probably indicates the persistence of the same gap symmetry observed in the pristine, non-irradiated compound.

2 Materials and methods

2.1 Crystal growth and basic characterization

Single crystals of Rb-12442 were grown by the self-flux method [14, 20, 21] and their high quality was assessed through X-ray diffraction and energy-dispersive X-ray spectroscopy as detailed in Refs. [14, 16].

2.2 Electrical resistivity measurements

The temperature dependence of the electrical resistivity was measured on selected single crystals by means of the van der Pauw method [22] after having electrically contacted them with thin gold wires and conducting silver paste. Each resistance measurement was performed by sourcing a small DC current $\approx 100 \mu\text{A}$ between two adjacent contacts and measuring the resulting voltage drop across the opposite pair of contacts. Common-mode offsets including thermoelectric voltages were removed using the current-reversal method.

2.3 CPWR measurements

The London penetration depth and superfluid density were measured by means of a coplanar waveguide resonator (CPWR) technique, particularly suitable to study small IBS crystals for irradiation experiments since it is minimally invasive and the same samples can be characterized several times before and after different irradiation steps [23]. The measurement was carried out within a resonator perturbation approach. A coplanar waveguide resonator obtained by patterning an $\text{YBa}_2\text{Cu}_3\text{O}_{7-\delta}$ thin film deposited on MgO substrate was coupled to a vector network analyzer for the measurement of the scattering matrix at low input power. The transmitted power shows a resonance that can be fitted by a modified Lorentzian function, yielding the resonance frequency and quality factor. Measurements were carried out as a function of the temperature for the empty resonator and with the investigated samples coupled to it (i.e., placed on the central stripline, far from the edges). The presence of the sample causes

shifts of the resonance frequency and of the quality factor that are due to the electromagnetic properties of the sample: from these shifts, after a self-consistent calibration procedure, the absolute value of the penetration depth and its temperature dependence can be assessed [24].

2.4 PCARS measurements

The structure of the superconducting gap was assessed via point-contact Andreev reflection spectroscopy (PCARS), by measuring the differential conductance (dI/dV) of point-like contacts made between a normal metal (N) and the superconducting sample (S). Unlike in tunnelling spectroscopy, in a direct N/S contact without insulating barrier, electrons impinging on the N/S interface are either transmitted from the metal to the superconductor—if their energy eV is higher than the gap Δ in the S side—or experience Andreev reflection, i.e., are transmitted as a Cooper pair in S while a hole is reflected back in N [17–19]. As a result, the differential conductance of the junction is enhanced for V smaller than Δ/e . In real junctions, a small potential barrier can be present at the interface, which makes a tunneling contribution be present in addition to the Andreev-reflection signal. The shape of the resulting dI/dV vs. V curve depends not only on the gap amplitude, but also on its symmetry in the reciprocal space. In particular, isotropic gaps give rise to conductance curves with a zero-bias minimum and two symmetric maxima at the gap edges, no matter what is the direction of current injection with respect to the crystallographic axes [18]. Instead, anisotropic nodal gaps (especially in the case of a d -wave symmetry) can give rise to a variety of different curves depending on the angle of current injection [25]. For example, zero-bias cusps or peaks are typical features that can be associated to a d -wave gap, in specific conditions of barrier height and current direction [19]. In multigap systems, features such as peaks or shoulders are observed in the differential conductance, which are the hallmarks of the different gaps [19].

Point contacts were fabricated by using the so-called soft technique [18, 19], i.e., by using a thin gold wire ($\phi \approx 12.7 \mu\text{m}$) stretched over the platelet-like sample and touching its very thin and flat side surface in a single point. These contacts were (optionally) mechanically stabilized by small ($\phi \approx 50 \mu\text{m}$) drop-cast droplets of silver paste. In either case, the “macroscopic” contact actually consists of several parallel nanoscopic N/S contacts.

The differential conductance was obtained by numerical derivation of the $I - V$ characteristics of the contact, measured in the pseudo-four-probe configuration as detailed in Refs. [12, 16]. Within the present paper, the direction of (main) current injection was confined along the ab planes of the crystals by making the point contacts on the thin, but smooth and flat side surfaces of the crystals. For the dI/dV vs. V curves to contain spectroscopic information, the (maximum) energy of the injected electrons must be directly related to the bias voltage applied through the junction, i.e., $E = eV$. This requires that the resistance of the contact is much larger than the resistance of the normal bank, and that electrons do not lose energy while crossing the interface. The latter condition means that there is no Joule dissipation in the contact, and is fulfilled if the individual

nanocontacts are in the ballistic or at most diffusive regime [18, 26], i.e., their radius is smaller than the (inelastic) electronic mean free path.

Information about the gap number, amplitude and symmetry were extracted from the experimental dI/dV vs. V curves of spectroscopic contacts by fitting them with suitable models. Before fitting, the experimental curves at any temperature were normalized to the normal-state curve measured just above the superconducting transition—as customary in IBSs [18, 27, 28]—after this was rescaled by subtracting the contribution of the so-called spreading resistance R_s , i.e., normal-state resistance of the crystal that appears, in series with the contact, in the proximity of the resistive transition and results in a horizontal stretching and a downward shift of the dI/dV spectra with respect to those at low temperature [29]. As discussed in Refs. [12, 16], for each contact we typically selected the value of R_s that allows matching the tails of the normal and superconducting dI/dV spectra. Since this choice remains somewhat arbitrary, we used multiple reasonable values of R_s to obtain the normalized spectra, and repeated each time the fitting procedure. The resulting values of the fit parameters were then averaged and their maximum differences taken as the uncertainty of the procedure.

The normalized dI/dV spectra were then fitted to the two-band version [18, 19] of the appropriate anisotropic Blonder-Tinkham-Klapwijk model [30–32], as extensively discussed in Refs. [12, 16]. The reason why we used an effective two-band model even if we expect more than two gaps to be present in this compound is due to the necessity to limit the number of adjustable parameters. Indeed, for each gap i the model includes as adjustable parameters the gap amplitude Δ_i , the broadening parameter Γ_i , and the barrier parameter Z_i . The model also contains the relative weight of the large-gap band in the conductance w_1 and the direction α between the direction of (main) current injection and the antinodal line. The latter is crucial in reproducing zero-bias peaks in the experimental spectra arising from the interference effects occurring when electron-like and hole-like quasiparticles experience order parameters of opposite sign. Being based on the weak-coupling BCS theory, the model does not capture strong-coupling features such as electron-boson-derived shoulders appearing at energies higher than the largest gap, which must therefore be excluded from the fitting procedure [19, 27, 29].

2.5 Ion irradiation

Ion irradiation was carried out at the CN facility of the Legnaro National Laboratories of INFN, at room temperature, in high vacuum, with a defocused 3.5 MeV proton beam incident parallel to the c axis of the samples. This energy ensures that ion implantation is avoided in all the investigated samples. The beam current was kept below 60 nA on a spot of 7 mm of diameter, to avoid excessive sample heating.

Irradiation with MeV-protons in IBSs is known to produce point-like defects (Frenkel pairs) and small clusters of nanometric size [33], that in the present case are quite uniformly distributed in the sample, since the Bragg peak is avoided. Such defects are efficient scattering centers that can strongly affect the superconducting state by suppressing the superfluid density.

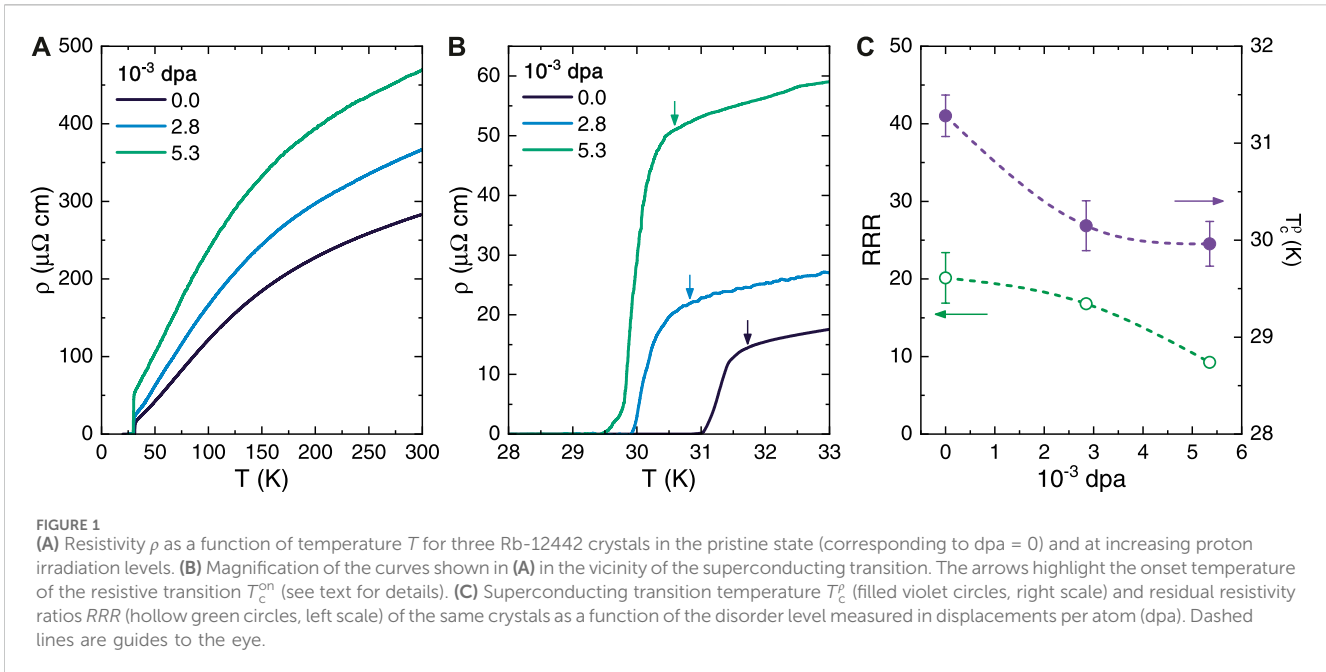


FIGURE 1

(A) Resistivity ρ as a function of temperature T for three Rb-12442 crystals in the pristine state (corresponding to dpa = 0) and at increasing proton irradiation levels. (B) Magnification of the curves shown in (A) in the vicinity of the superconducting transition. The arrows highlight the onset temperature of the resistive transition T_c^{on} (see text for details). (C) Superconducting transition temperature T_c^p (filled violet circles, right scale) and residual resistivity ratios RRR (hollow green circles, left scale) of the same crystals as a function of the disorder level measured in displacements per atom (dpa). Dashed lines are guides to the eye.

In order to compare the effects of irradiation on the superconducting properties of our samples with other materials and irradiation conditions we computed the displacements per atom (dpa) through Monte Carlo simulations with the SRIM code [34]. This approach has proven useful to study the effects of ion-irradiation-induced disorder because dpa is a good parameter to characterize the amount of scattering centers introduced in the sample [35]. The dpa value is proportional to the proton fluence, that was evaluated through the total deposited charge obtained by integrating the measured beam current at the beam spot on the sample.

3 Results

We first investigate the effects of ion irradiation on the electric transport properties of the Rb-12442 crystals. Figure 1A shows the electrical resistivity ρ as a function of temperature T of three crystals at different dpa values, and Figure 1B a magnification close to the superconducting transitions. The normal state of the pristine crystal exhibits the typical behaviour as reported in the literature [14, 16]: the residual resistivity ratio, defined as $RRR = \rho(300 \text{ K})/\rho(T_c^{\text{on}})$, is $RRR = 20 \pm 3$ and larger than the literature values (12–16) [14, 16, 36]; whereas the resistivity at room T is $\rho(300 \text{ K}) = 290 \pm 30 \mu\Omega \text{ cm}$ and lower than the previously-reported values ($\approx 1.1 \text{ m}\Omega \text{ cm}$) [14]. Both features attest the high crystalline quality of our present samples. Here, T_c^{on} is defined as the onset of the superconducting transition, i.e., the temperature at which the resistivity starts to deviate from a linear extrapolation of the normal state (highlighted by the arrows in Figure 1B). The resistive superconducting transition temperature is defined as $T_c^p = T_c^{50} \pm \frac{T_c^{90} - T_c^{10}}{2}$, where T_c^α is the temperature at which the resistivity reaches $\alpha\%$ of $\rho(T_c^{\text{on}})$, and is equal to $T_c^p = 31.3 \pm 0.2 \text{ K}$ for the pristine crystal, in good agreement with the previous reports [12, 14, 16].

At the increase of the irradiation level, the resistivity increases in the entire temperature range up to $\rho(300 \text{ K}) = 470 \pm 50 \mu\Omega \text{ cm}$ in the crystal at 5.3×10^{-3} dpa, and at the same time both T_c^p and RRR are suppressed. As shown in Figure 1C, the suppression of T_c^p introduced by irradiation is significantly faster at lower dpa than at higher dpa values, and for both quantities it is minute with respect to those introduced by substitutional Ni doping. Specifically, we observe a maximum T_c^p suppression of 4.2% and a minimum $RRR = 9$ in our irradiated samples, against a complete disappearance of superconductivity and a minimum $RRR \approx 1$ in Ni-doped samples. This indicates that the perturbations to the structural and electronic properties of Rb-12442 crystals introduced by irradiation are minimal with respect to those attained by substitutional doping.

A more extensive characterization of the superconducting properties of the Rb-12442 crystals upon increasing ion irradiation was carried out by analyzing the data from CPWR measurements. Figure 2A shows the temperature dependence of the London penetration depth λ_L for the pristine crystal and for five irradiated crystals with increasing dpa values, from 1.7 up to 7.8×10^{-3} dpa. It can clearly be seen that ion irradiation increases λ_L in the entire T range and suppresses the onset temperature below which superconducting behaviour is observed. In particular, the superconducting critical temperature T_c^λ can be obtained as the value of T at which λ_L diverges (or equivalently, at which the superfluid density $\rho_s = \lambda_L^{-2}$ goes to 0). Figure 2B shows how this definition correlates extremely well to the midpoint of the resistive transition in transport measurements, for both pristine and irradiated samples.

Figure 2C tracks the evolution of T_c^λ upon increasing irradiation level, which confirms both its small suppression as compared with those attained via substitutional doping (maximum T_c^λ suppression of 4.5% at 7.8×10^{-3} dpa) and the progressive reduction in its suppression rate at higher dpa values. Figure 2D shows λ_L measured at $T = 10 \text{ K}$ and the corresponding values of ρ_s as a function of the dpa values: $\lambda_L(10 \text{ K})$ increases from 211 to 790 nm from the pristine

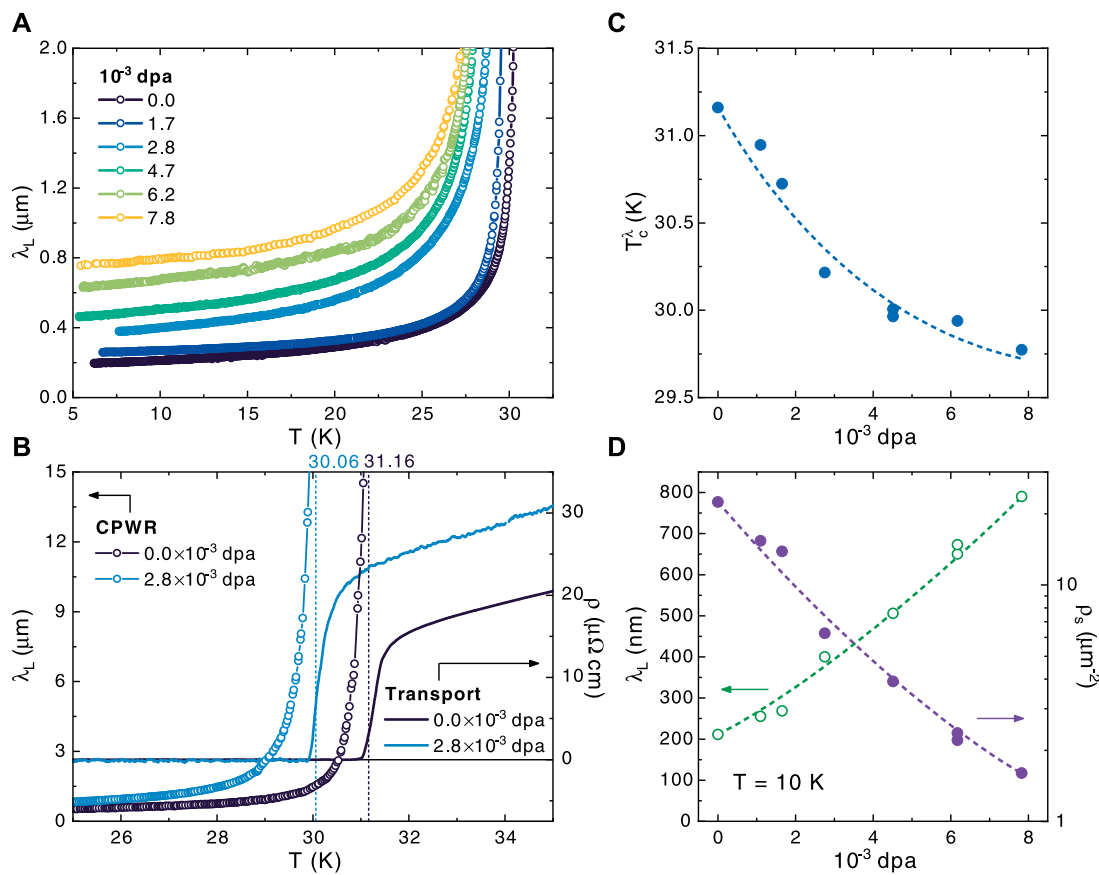


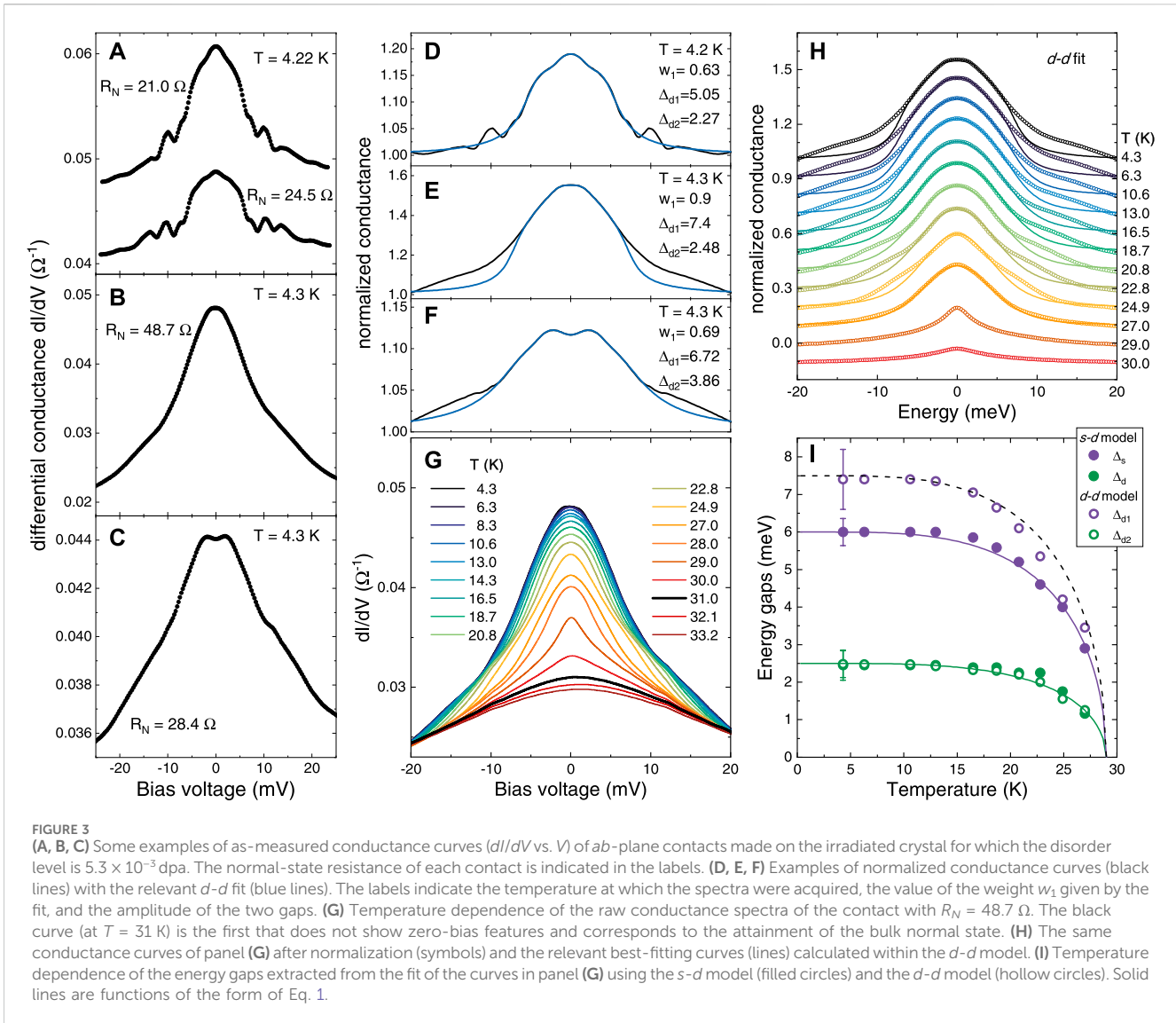
FIGURE 2

(A) Temperature (T) dependence of the London penetration depth λ_L determined from CPWR measurements for pristine and irradiated crystals for increasing proton irradiation levels, measured as displacements per atom (dpa). (B) Comparison of the T dependencies of λ_L (hollow circles, left scale) and of the electrical resistivity ρ (solid lines, right scale) measured in the same two samples (a pristine crystal and an irradiated crystals at 2.8×10^{-3} dpa). The superconducting critical temperature determined from CPWR measurements, T_c^λ (defined as the T at which λ_L diverges) correlates well with the midpoint of the resistive transition. (C) T_c^λ and (D) λ_L (hollow green circles, left scale) and ρ_s (filled violet circles, right scales) measured at 10 K determined from the curves shown in panel (A) as a function of the disorder level measured in dpa. Dashed lines are guides to the eye.

crystal to the crystal irradiated at 7.8×10^{-3} dpa, corresponding to a reduction in $\rho_s(10 \text{ K})$ from 22.4 to $7.8 \mu\text{m}^{-2}$. This shows that ion irradiation is much more effective at tuning the magnetic penetration depth of the Rb-12442 crystals with respect to their superconducting transition temperatures, also when compared with Ni substitutional doping: for instance, 5% Ni-doped crystals—where T_c^λ was suppressed by $\sim 34\%$ with respect to the pristine crystals—exhibited an increase of $\lambda_L(10 \text{ K})$ only up to $\sim 600 \text{ nm}$ [16].

Now we turn our attention to the effect of ion irradiation on the values of the superconducting energy gaps as measured by PCARS. Figures 3A, B, C show some examples of low-temperature PCARS spectra of different point contacts (with different normal-state resistance) made on the sample with a disorder level of 5.3×10^{-3} dpa. Most spectra (Figure 3A) show a zero-bias cusp or maximum, which is suggestive of a nodal gap [18, 19, 30–32], and is perfectly consistent with the observations made on pristine Rb-12442 [12, 16]. Others, instead, show a broad maximum (Figure 3B) or even two symmetric maxima at low bias (Figure 3C) that are usually associated to an isotropic gap, but can be observed even in d -wave gap symmetry when the current is injected (mainly) along the antinodal direction [18, 19, 30–32].

More detailed information about the energy gap can be extracted by normalizing the experimental spectra to the normal-state curve measured immediately above T_c [18, 27, 28], and fitting the normalized spectra to a suitable model for Andreev reflection at a normal metal/superconductor interface [18, 19]. Figures 3D, E, F show three different normalized spectra (black lines). None of these could be fitted by using a single gap, either in s -wave or d -wave symmetry, indicating that irradiation does not change the multiband nature of superconductivity in this compound. We then used an effective two-band model, in which the relative weight of the gaps is an adjustable parameter. Based on the results found in pristine, unirradiated Rb-12442 [12, 16] and on the fact that some of the curves (Figure 3D) display a zero-bias cusp, we tried to fit the curves using either an isotropic s -wave gap and a nodal d -wave gap (s - d model in the following) or two d -wave gaps (d - d model). As discussed in Ref. [12], the s - d model actually mimics the nodal s_\pm and the $d_{x^2-y^2}$ symmetries, whereas the d - d model mimics the d_{xy} symmetry, all compatible with the tetragonal structure of Rb-12442 [8]. In both the models, the partial conductance associated to each gap is modelled as in Ref. [32]. The fitting parameters are then, in addition to the gap amplitudes Δ_s and Δ_d (in the s - d model) or Δ_{d1}



and Δ_{d2} (in the d - d model), the weight w_1 of the large gap (such that $w_2 = 1 - w_1$), the barrier parameters Z_1 and Z_2 , the broadening parameters Γ_1 and Γ_2 , and the angle α between the direction of (main) current injection and the antinodal direction of the d -wave gap. In the case of the d - d model, we assume $\alpha_1 = \alpha_2$, that implies that both the gaps have nodes in the same direction.

It turns out that both the models allow a good fit of the curves, as already pointed out in the case of pristine Rb-12442 and of the Ni-doped compound [12, 16]. The fact that irradiation does not change the gap structure is compatible both with the small effect on the critical temperature, and with the observed persistence of the same structure even in Ni-doped samples [12, 16] where the dopants introduce disorder and give rise to a much more significant T_c suppression (about 10 K). It is worth noting that, in order to reproduce the shape of the curves in panels E and F, the current injection has to be assumed to occur along the antinodal direction of the d -wave gap (i.e., $\alpha \approx 0$). Just as an example, Figures 3D, E, F show the results of the d - d fit of three different curves measured at the lowest temperature. The fit is very good in the central part of the curves, while for higher energies (starting at about 10 meV) it fails

due to an excess conductance probably due to the coupling of charge carriers with some bosonic mode involved in the superconducting pairing, as always observed in IBSS [19, 27, 29, 37]. The amplitudes of the superconducting gaps vary from one contact to another, probably due to the fact that the compound features more than two gaps, while we are using here a minimal (effective) two-gap model in order to keep the number of adjustable parameters to a minimum; moreover, the presence of the bosonic structures prevents an accurate determination of the larger gap, presumably causing its overestimation. The same happened in pristine Rb-12442, where the gap amplitudes were spread over a rather wide band of energies. In particular we found, for the d - d model, $\Delta_{d1} \in [4.8, 7.3]$ meV and $\Delta_{d2} \in [1.3, 3.0]$ meV. The gap amplitudes that result from the d - d fit of the curves in irradiated Rb-12442 are still generally compatible with the same distribution of gap values, meaning that no significant change in the gap amplitudes has been produced by irradiation. The same happens in the case of the s - d fit.

Figure 3G reports, as an example, the temperature dependence of the conductance curves of a point-contact whose normal-state resistance is 48.7 Ω . Above 31 K (black curve) the conductance

curves are smooth and do not show any feature at zero bias. This means that, at this temperature, the transition to the normal state is complete (in accordance with the green curve in Figure 1B). We thus chose this curve as the normal-state conductance and used it to normalize all the others at lower temperatures, with no need of any further rescaling or shift. The resulting normalized curves are shown in Figure 3H (symbols), vertically offset for clarity (apart from the lowest-temperature curve). The best-fitting curves, obtained within the d - d model, are shown as well as solid lines. The fit follows rather well the temperature evolution of the experimental curves; up to 23 K, it was possible to fit them by keeping all the parameters of the model (apart from the gaps) fixed to their lowest-temperature values, which is always a good indication of both the reliability of the curves (and of the normalization) and of the ability of the model to grasp the physics of the system. In particular, we used $w = 0.9$, $\Gamma_1 = 0.45$ meV, $Z_1 = 0.14$, $\Gamma_2 = 0.25$ meV, $Z_2 = 0.32$. Above 23 K, instead, the conductance curves start to shrink, becoming too narrow with respect to what predicted by the model; if one wants to reproduce this shrinking, the values of the barrier parameters and of the broadening parameters must be reduced. The possible reason for this behaviour can be understood by plotting the gap amplitudes resulting from the fit as a function of the temperature, as in Figure 3I. This plot shows that the small gap amplitude is rather robust against the model used (either s - d or d - d) which is natural since in either case the small gap has the d -wave symmetry. The amplitude of the larger gap instead depends on whether it is s -wave or d -wave, which is perfectly natural due to the different shape of the Andreev-reflection features that these two symmetries produce. The most relevant thing is that, no matter what the model is, the gap amplitudes follow a very clear trend which can be approximated by the solid and dashed curves, whose expression is

$$\Delta_i(T) = \Delta_i(0) \tanh\left(2.0 \sqrt{\frac{T_c^A}{T} - 1}\right) \quad (1)$$

where Δ_i is the gap of the i -th band and $T_c^A = 29$ K. This indicates that the behaviour is not exactly BCS, and that the Andreev critical temperature T_c^A (i.e., the temperature at which the Andreev signal disappears, and at which the superconducting bank of the junction becomes normal) is about 29 K, and thus smaller than $T_c = 31$ K at which the narrow zero-bias maximum in the experimental curves disappears (see Figure 3G). As is clear from Figure 1B, T_c^A falls in the proximity of the superconducting transition, but still in a region where the resistivity is zero. This is likely to be due to the non perfectly ballistic nature of the contact, so that a very small heating occurs in the contact region giving rise to a small mismatch between the “bulk” T_c^p and T_c^A . The same effect explains the narrow zero-bias peak that emerges at high temperature in the conductance curves: while at zero bias the temperature of the contact is equal to that of the bulk, on increasing the bias voltage the current gives rise to heating and, being close to the normal transition, this produces an increase in resistance (and thus a decrease in conductance). Such an effect ceases when the temperature at which the curve is acquired is already in a region where the normal transition (as measured by transport) is complete, since here the resistivity has a much weaker dependence on temperature. Figure 4 displays the temperature dependence of the zero-bias resistance (main panel) and conductance (inset). It is clear that the high-temperature behaviour of both these quantities is no longer due to the temperature

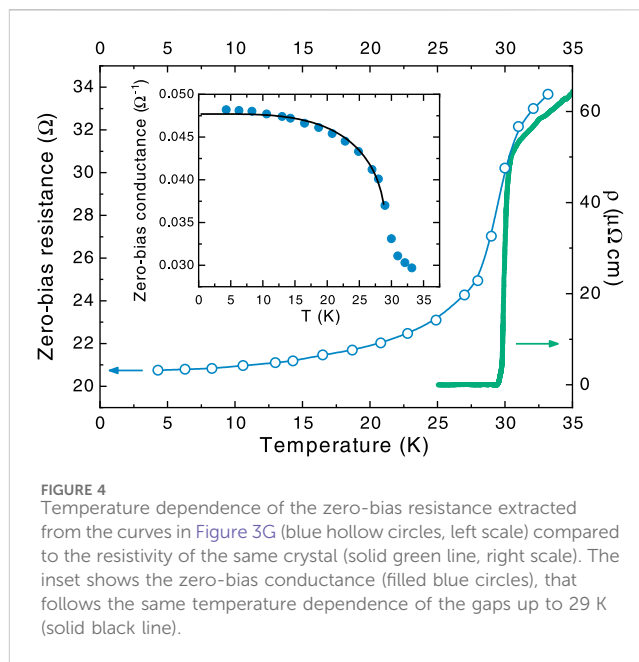


FIGURE 4 Temperature dependence of the zero-bias resistance extracted from the curves in Figure 3G (blue hollow circles, left scale) compared to the resistivity of the same crystal (solid green line, right scale). The inset shows the zero-bias conductance (filled blue circles), that follows the same temperature dependence of the gaps up to 29 K (solid black line).

4 Discussion

The response to proton-irradiation-induced disorder of Rb-12442 is qualitatively as expected for the IBSS, showing a suppression of the critical temperature and of the superfluid density due to the enhanced scattering of carriers in a multiband system. However, there is a relevant quantitative difference: below about $4\text{--}5 \times 10^{-3}$ dpa, the T_c suppression rate with dpa in optimally-doped (Ba,K)Fe₂As₂ is about twice than for Rb-12442 samples, despite the similar pristine critical temperature of the two compositions. This is reported in Figure 5A, where the data obtained in this work on Rb-12442 are compared to the typical behavior exhibited by the 122 family of IBSS when exposed to the same irradiation process [35]. It is also evident that the T_c vs. dpa curve of Rb-12442 shows an upward curvature (or alternatively, that it can be divided in two separate linear trends with different slopes), implying an even lower dpa dependence at higher disorder levels. This behavior is quite unexpected, and could—in principle—be the result of an important change in the symmetry of the superconducting gap of the system. However, the fact that the experimental PCARS spectra measured on a sample with a disorder level of 5.3×10^{-3} dpa can be satisfactorily fitted using models employing the same gap symmetry describing pristine and Ni-doped Rb-12442 [12, 16] makes this scenario highly unlikely. Similarly to T_c , also the low-temperature value of the London penetration depth, as shown in Figure 5B, has a much smaller variation with dpa when compared to other IBSS. In this case, the modification with dpa is approximately linear in the whole investigated range.

These two observations indicate that the condensate in this system is affected much less than similar systems by the exposition to the same proton irradiation conditions. Since the composition, density and chemical nature of the 12442 and 122 families of IBSSs is

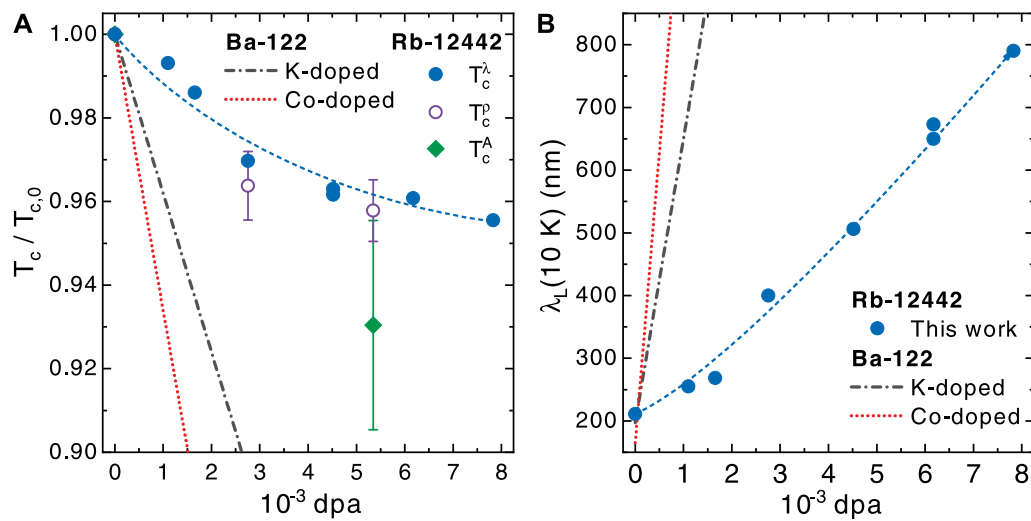


FIGURE 5

(A) Proton-irradiation-induced suppression of the superconducting critical temperature T_c for Rb-12442 samples, determined from CPWR analysis (T_c^λ , filled blue circles), from dc resistivity (T_c^p , hollow violet circles) and from PCARS measurements (T_c^A , filled green diamonds—the smaller value is due to localized contact heating as explained in the text). The dashed line is a guide for the eye. Data are normalized to the corresponding transition temperature at 0 dpa ($T_{c,0}$) and compared to the trend (black and red lines) showed by two optimally-doped systems of the 122 IBS family (K and Co-doped BaFe_2As_2), for which the scaling laws with dpa were reported [35]. (B) Proton irradiation-induced increase of the London penetration depth λ_L at $T = 10 \text{ K}$ for Rb-12442 samples (symbols, dashed line is a guide to the eye), compared to the trends shown by the same two IBS Ba-122 systems shown in (A) [35].

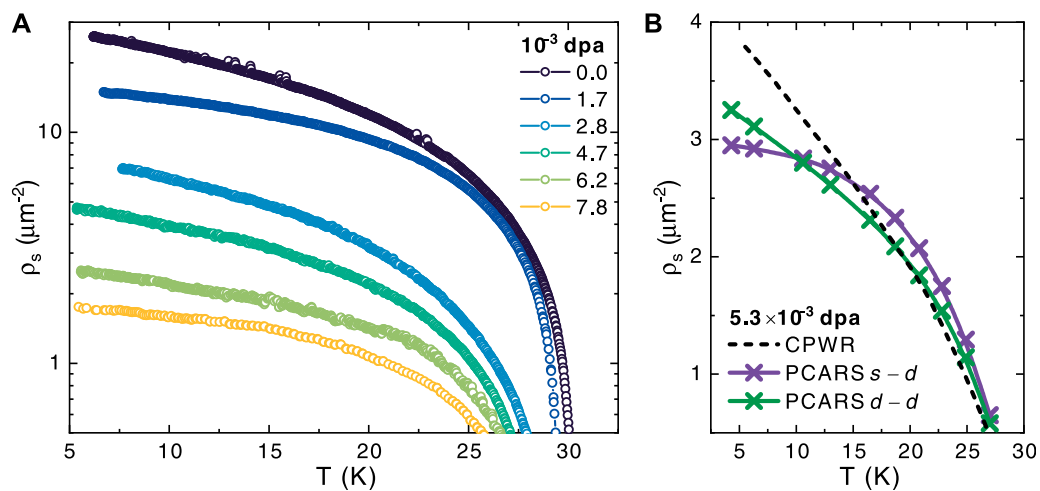


FIGURE 6

(A) Superfluid density ($\rho_s = \lambda_L^{-2}$) as a function of temperature T for increasing values of proton irradiation-induced disorder measured in displacements per atom (dpa), from CPWR measurements. (B) Data calculated from the gap values measured by PCARS (crosses) are compared to the temperature dependence of ρ_s deduced starting from CPWR data for the disorder level of 5.3×10^{-3} dpa.

similar, a similar defects morphology is induced in the samples. Therefore, either the recombination rate of the created defects is much higher in the 12442 family (possibly due to the more layered and anisotropic structure), or the superconducting state itself is more radiation-hard. The latter option could be related to the other peculiarities observed in this system, such as the observation of nodal behavior [16, 38–40] and its vicinity to the disappearance of the electron-like pockets [12].

A further confirmation of the robustness of nodal behavior in Rb-12442 against the introduction of disorder via proton irradiation

can be obtained from the temperature dependence of the superfluid density. Figure 6A shows $\rho_s = \lambda_L^{-2}$ as a function of T determined from the $\lambda_L(T)$ curves shown in Figure 2A: beyond the suppression of the superfluid density in the entire temperature range with increasing dpa, it can be seen that all the $\rho_s(T)$ curves exhibit a smooth, kink-less behavior in the experimentally-accessible temperature range, and a clear linear dependence at low temperatures. Both features are consistent with the previous reports in pristine and Ni-doped Rb-12442 crystals [12, 16] and are typically associated with multigap superconductivity with

mainly interband coupling [41] and with the existence of at least one nodal gap [38, 39] respectively.

This interpretation can be further corroborated by combining the results obtained independently by means of the CPWR and PCARS measurements. As a matter of fact, the superfluid density can also be computed from the zero-temperature London penetration depth, $\lambda_L(0)$, and from the temperature-dependence of the gap values extracted from PCARS, $\Delta_i(T)$, as [42]:

$$\rho_s(T) = \frac{1}{\lambda_L(0)^2} \sum_i w_i \left[1 + \frac{1}{\pi} \int_0^{2\pi} \int_0^{\infty} \frac{\partial f}{\partial E} \frac{EdEd\phi}{\sqrt{E^2 - \Delta_i^2(\phi, T)}} \right]$$

where i identifies the band, $\Delta_i(\phi, T)$ is the angle-dependent superconducting gap function, $f = [1 + \exp(E/k_B T)]^{-1}$ is the Fermi function and w_i is the mixing weight of the i -th gap contribution (constrained by $w_1 + w_2 = 1$). For this latter parameter we use the same value previously employed for pristine undoped Rb-12442 [16] and consider it as a fixed parameter. One can factorize the angular and temperature dependencies of the gap as $\Delta_i(\phi, T) = \Delta_{0,i} f_{\phi}(\phi) f_T(T)$, where the angular function for d -wave (nodal) superconductors is $f_{\phi}(\phi) = \cos(2\phi)$ and the gap amplitude is the one measured by PCARS. To obtain the $\lambda_L(0)$ value for the disorder level of the sample measured by PCARS we linearly interpolate the data shown in Figure 5B.

The comparison between the superfluid data from PCARS obtained within this approach and the data from the CPWR technique is shown in Figure 6B, for the disorder level of 5.3×10^{-3} dpa. Violet (green) crosses indicate the values of ρ_s calculated by starting from the PCARS gaps extracted from the s - d (d - d) fit, while the black dotted line represents the $\rho_s(T)$ curve deduced from the CPWR analysis for a disorder level of 5.3×10^{-3} dpa. The PCARS d - d case seems to yield the best qualitative match with the CPWR trend since it reproduces the linear behavior at low temperatures (even though with a lower slope), contrarily to what is found for the s - d case, where the s -wave component forces the curve to saturate.

In summary, we reported on the unusually weak irradiation effects on the superconducting properties of the IBS Rb-12442. The analysis was performed by CPWR and PCARS on single crystals before and after 3.5-MeV proton irradiation, at different damage levels up to 7.8×10^{-3} dpa. Both the critical temperature and the superfluid density are shown to decrease with disorder, but at a much lower rate than for other IBS systems with similar pristine values of T_c and ρ_s . Moreover, the critical temperature degradation shows also a qualitatively different trend with respect to the other mentioned IBSs, i.e., a change of linear slope or possibly an upward curvature, implying an even smaller disorder dependence for higher irradiation doses. A comparison between results from the two measurement techniques allowed us to elaborate about the order parameter symmetry, in an effective two-gap approach. The evidence of a nodal behavior is confirmed also for the irradiated crystal and on the basis of the comparison we are inclined to select the d - d scenario rather than the s - d one, even though an ultimate evidence is still needed, which encourages further investigation.

Data availability statement

The original contributions presented in the study are included in the article/Supplementary Material, further inquiries can be directed to the corresponding author.

Author contributions

DT: Conceptualization, Investigation, Writing—original draft, Writing—review and editing. EP: Data curation, Investigation, Visualization, Writing—original draft, Writing—review and editing. MF: Investigation, Writing—review and editing. RG: Investigation, Writing—review and editing. LG: Investigation, Writing—review and editing. XY: Investigation, Writing—review and editing. XX: Investigation, Writing—review and editing. ZS: Investigation, Writing—review and editing. DD: Formal Analysis, Funding acquisition, Investigation, Resources, Writing—original draft, Writing—review and editing. GG: Conceptualization, Formal Analysis, Funding acquisition, Investigation, Resources, Writing—original draft, Writing—review and editing.

Funding

The author(s) declare financial support was received for the research, authorship, and/or publication of this article. This work was supported by the Italian Ministry of Education, University, and Research through the PRIN-2017 program: DT, MF, RG, LG, and GG acknowledge support from project “HIBISCUS”, Grant No. 201785KWLE; EP and DD acknowledge support from project “Quantum2D”, Grant No. 2017Z8TS5B). DT also acknowledges that this study was carried out within the Ministerial Decree no. 1062/2021 and received funding from the FSE REACT-EU—PON Ricerca e Innovazione 2014–2020.

Acknowledgments

Support by INFN CSN5 and by the European Cooperation in Science and Technology (COST) action CA21144 “SUPERQUMAP” is also acknowledged.

Conflict of interest

The authors declare that the research was conducted in the absence of any commercial or financial relationships that could be construed as a potential conflict of interest.

Publisher's note

All claims expressed in this article are solely those of the authors and do not necessarily represent those of their affiliated organizations, or those of the publisher, the editors and the reviewers. Any product that may be evaluated in this article, or claim that may be made by its manufacturer, is not guaranteed or endorsed by the publisher.

Author disclaimer

This manuscript reflects only the authors' views and opinions, neither the European Union nor the European Commission can be considered responsible for them.

References

- Korshunov MM, Togushova YN, Dolgov OV. Impurities in multiband superconductors. *Physics-Uspekhi* (2016) 59:1211–40. doi:10.3367/UFNe.2016.07.037863
- Efremov DV, Korshunov MM, Dolgov OV, Golubov AA, Hirschfeld PJ. Disorder-induced transition between s_x and s_{++} states in two-band superconductors. *Phys Rev B* (2011) 84:180512. (R). doi:10.1103/PhysRevB.84.180512
- Ghigo G, Torsello D, Umbarino GA, Gozzelino L, Tanatar MA, Prozorov R, et al. Disorder-driven transition from s_x to s_{++} superconducting order parameter in proton irradiated $\text{Ba}(\text{Fe}_{1-x}\text{Rh}_x)_2\text{As}_2$ single crystals. *Phys Rev Lett* (2018) 121:107001. doi:10.1103/PhysRevLett.121.107001
- Ghigo G, Umbarino GA, Gozzelino L, Gerbaldo R, Laviano F, Torsello D, et al. Effects of disorder induced by heavy-ion irradiation on $(\text{Ba}_{1-x}\text{K}_x)\text{Fe}_2\text{As}_2$ single crystals, within the three-band Eliashberg s_x wave model. *Sci Rep* (2017) 7:13029. doi:10.1038/s41598-017-13303-5
- Ghigo G, Torsello D, Gerbaldo R, Gozzelino L, Pyon S, Veshchunov IS, et al. Effects of proton irradiation on the magnetic superconductor $\text{EuFe}_2(\text{As}_{1-x}\text{P}_x)_2$. *Supercond Sci Technol* (2020) 33:094011. doi:10.1088/1361-6668/aba355
- Torsello D, Umbarino G, Bekaert J, Gozzelino L, Gerbaldo R, Tanatar M, et al. Tuning the intrinsic anisotropy with disorder in the $\text{CaKFe}_4\text{As}_4$ superconductor. *Phys Rev Appl* (2020) 13:064046. doi:10.1103/PhysRevApplied.13.064046
- Torsello D, Gerbaldo R, Gozzelino L, Laviano F, Takahashi A, Park A, et al. Twofold role of columnar defects in iron based superconductors. *Supercond Sci Technol* (2020) 33:094012. doi:10.1088/1361-6668/aba350
- Hirschfeld PJ, Korshunov MM, Mazin II. Gap symmetry and structure of Fe-based superconductors. *Rep Prog Phys* (2011) 74:124508. doi:10.1088/0034-4885/74/12/124508
- Wang ZC, He CY, Wu SQ, Tang ZT, Liu Y, Ablimit A, et al. Superconductivity in $\text{KCa}_2\text{Fe}_4\text{As}_4\text{F}_2$ with separate double Fe_2As_2 layers. *J Am Chem Soc* (2016) 138:7856–9. doi:10.1021/jacs.6b04538
- Wang Z, He C, Tang Z, Wu S, Cao G. Crystal structure and superconductivity at about 30 K in $\text{ACa}_2\text{Fe}_4\text{As}_4\text{F}_2$ (A = Rb, Cs). *Sci China Mater* (2017) 60:83–9. doi:10.1007/s40843-016-5150-x
- Wu SQ, Wang ZC, He CY, Tang ZT, Liu Y, Cao GH. Superconductivity at 33–37 K in $\text{ALn}_2\text{Fe}_4\text{As}_4\text{O}_2$ (A = K and Cs; Ln = lanthanides). *Phys Rev Mater* (2017) 1:044804. doi:10.1103/PhysRevMaterials.1.044804
- Piatti E, Torsello D, Ghigo G, Daghero D. Spectroscopic studies of the superconducting gap in the 12442 family of iron-based compounds (Review article). *Low Temp Phys* (2023) 49:770–85. doi:10.1063/1.5019688
- Wang T, Zhang C, Xu L, Wang J, Jiang S, Zhu Z, et al. Strong Pauli paramagnetic effect in the upper critical field of $\text{KCa}_2\text{Fe}_4\text{As}_4\text{F}_2$. *Science China Phys Mech Astron* (2020) 63:227412–6. doi:10.1007/s11433-019-1441-4
- Yi X, Li M, Xing X, Meng Y, Zhao C, Shi Z. Single crystal growth and effects of Ni doping on the novel 12442-type iron-based superconductor $\text{RbCa}_2\text{Fe}_4\text{As}_4\text{F}_2$. *New J Phys* (2020) 22:073007. doi:10.1088/1367-2630/ab9427
- Wang ZC, Liu Y, Wu SQ, Shao YT, Ren Z, Cao GH. Giant anisotropy in superconducting single crystals of $\text{CsCa}_2\text{Fe}_4\text{As}_4\text{F}_2$. *Phys Rev B* (2019) 99:144501. doi:10.1103/PhysRevB.99.144501
- Torsello D, Piatti E, Umbarino GA, Yi X, Xing X, Shi Z, et al. Nodal multigap superconductivity in the anisotropic iron-based compound $\text{RbCa}_2\text{Fe}_4\text{As}_4\text{F}_2$. *npj Quantum Mater* (2022) 7:10–7. doi:10.1038/s41535-021-00419-1
- Blonder GE, Tinkham M, Klapwijk TM. Transition from metallic to tunneling regimes in superconducting microconstrictions: excess current, charge imbalance, and supercurrent conversion. *Phys Rev B* (1982) 25:4515–32. doi:10.1103/PhysRevB.25.4515
- Daghero D, Gonnelli RS. Probing multiband superconductivity by point-contact spectroscopy. *Supercond Sci Technol* (2010) 23:043001. doi:10.1088/0953-2048/23/4/043001
- Daghero D, Tortello M, Umbarino GA, Gonnelli RS. Directional point-contact Andreev-reflection spectroscopy of Fe-based superconductors: Fermi surface topology, gap symmetry, and electron–boson interaction. *Rep Prog Phys* (2011) 74:124509. doi:10.1088/0034-4885/74/12/124509
- Wang T, Chu J, Jin H, Feng J, Wang L, Song Y, et al. Single-crystal growth and extremely high H_{c2} of 12442-type Fe-based superconductor $\text{KCa}_2\text{Fe}_4\text{As}_4\text{F}_2$. *The J Phys Chem C* (2019) 123:13925–9. doi:10.1021/acs.jpcc.9b04624
- Xing X, Yi X, Li M, Meng Y, Mu G, Ge JY, et al. Vortex phase diagram in 12442-type $\text{RbCa}_2\text{Fe}_4\text{As}_4\text{F}_2$ single crystal revealed by magneto-transport and magnetization measurements. *Supercond Sci Technol* (2020) 33:114005. doi:10.1088/1361-6668/abb35f
- Lim SHN, McKenzie DR, Bilek MMM. Van der Pauw method for measuring resistivity of a plane sample with distant boundaries. *Rev Sci Instrum* (2009) 80:075109. doi:10.1063/1.3183503
- Ghigo G, Torsello D. *Analysis of microwave conductivity and penetration depth of iron based superconductors families*. Cham: Springer International Publishing (2022). p. 61–75. doi:10.1007/978-3-030-93910-6_3
- Ghigo G, Fracasso M, Gerbaldo R, Gozzelino L, Laviano F, Napolitano A, et al. High-frequency ac susceptibility of iron-based superconductors. *Materials* (2022) 15:1079. doi:10.3390/ma15031079
- Daghero D, Tortello M, Umbarino GA, Griveau JC, Colineau E, Eloirdi R, et al. Strong-coupling d-wave superconductivity in PuCoGa_5 probed by point-contact spectroscopy. *Nat Commun* (2012) 3:786. doi:10.1038/ncomms1785
- Naidyuk YG, Yanson I. *Point-contact spectroscopy*. New York, NY: Springer (2005).
- Daghero D, Piatti E, Zhigadlo ND, Umbarino GA, Barbero N, Shiroka T. Superconductivity of underdoped $\text{PrFeAs}(\text{O},\text{F})$ investigated via point-contact spectroscopy and nuclear magnetic resonance. *Phys Rev B* (2020) 102:104513. doi:10.1103/PhysRevB.102.104513
- Daghero D, Tortello M, Umbarino GA, Piatti E, Ghigo G, Hatano T, et al. Decoupling of critical temperature and superconducting gaps in irradiated films of a Fe-based superconductor. *Supercond Sci Technol* (2018) 31:034005. doi:10.1088/1361-6668/aaa8b9
- Daghero D, Pecchio P, Umbarino G, Nabeshima F, Imai Y, Maeda A, et al. Point-contact Andreev-reflection spectroscopy in $\text{Fe}(\text{Te},\text{Se})$ films: multiband superconductivity and electron-boson coupling. *Supercond Sci Technol* (2014) 27:124014. doi:10.1088/0953-2048/27/12/124014
- Tanaka Y, Kashiwaya S. Theory of tunneling spectroscopy of d-wave superconductors. *Phys Rev Lett* (1995) 74:3451–4. doi:10.1103/PhysRevLett.74.3451
- Kashiwaya S, Tanaka Y, Koyanagi M, Takashima H, Kajimura K. Origin of zero-bias conductance peaks in high- T_c superconductors. *Phys Rev B* (1995) 51:1350–3. doi:10.1103/PhysRevB.51.1350
- Kashiwaya S, Tanaka Y, Koyanagi M, Kajimura K. Theory for tunneling spectroscopy of anisotropic superconductors. *Phys Rev B* (1996) 53:2667–76. doi:10.1103/PhysRevB.53.2667
- Park A, Pyon S, Sun Y, Veshchunov I, Chen J, Ito N, et al. Quasiparticle scattering in 3 MeV proton irradiated $\text{BaFe}_2(\text{As}_{0.67}\text{P}_{0.33})_2$. *Phys Rev B* (2018) 98:054512. doi:10.1103/PhysRevB.98.054512
- Ziegler JF, Ziegler M, Biersack J. SRIM – the stopping and range of ions in matter. *Nucl Instrum Meth B* (2010) 268:1818–23. doi:10.1016/j.nimb.2010.02.091
- Torsello D, Gozzelino L, Gerbaldo R, Tamegai T, Ghigo G. Scaling laws for ion irradiation effects in iron-based superconductors. *Sci Rep* (2021) 11:5818. doi:10.1038/s41598-021-84699-4
- Yi X, Xing X, Meng Y, Zhou N, Wang C, Sun Y, et al. Anomalous second magnetization peak in 12442-type $\text{RbCa}_2\text{Fe}_4\text{As}_4\text{F}_2$ superconductors. *Chin Phys Lett* (2023) 40:027401. doi:10.1088/0256-307X/40/2/027401
- Tortello M, Daghero D, Umbarino GA, Stepanov VA, Jiang J, Weiss JD, et al. Multigap superconductivity and strong electron-boson coupling in Fe-based superconductors: a point-contact Andreev-reflection study of $\text{BaFe}_{1-x}\text{Co}_x\text{As}_2$ single crystals. *Phys Rev Lett* (2010) 105:237002. doi:10.1103/PhysRevLett.105.237002
- Smidman M, Kirschner FKK, Adroja DT, Hillier AD, Lang F, Wang ZC, et al. Nodal multigap superconductivity in $\text{KCa}_2\text{Fe}_4\text{As}_4\text{F}_2$. *Phys Rev B* (2018) 97:060509. doi:10.1103/PhysRevB.97.060509
- Kirschner FKK, Adroja DT, Wang ZC, Lang F, Smidman M, Baker PJ, et al. Two-gap superconductivity with line nodes in $\text{CsCa}_2\text{Fe}_4\text{As}_4\text{F}_2$. *Phys Rev B* (2018) 97:060506. doi:10.1103/PhysRevB.97.060506
- Wang T, Chu J, Feng J, Wang L, Xu X, Li W, et al. Low temperature specific heat of 12442-type $\text{KCa}_2\text{Fe}_4\text{As}_4\text{F}_2$ single crystals. *Sci China Phys Mech Astron* (2020) 63:297412–6. doi:10.1007/s11433-020-1549-9
- Torsello D, Umbarino GA, Gozzelino L, Tamegai T, Ghigo G. Comprehensive Eliashberg analysis of microwave conductivity and penetration depth of K-Co- and P-substituted BaFe_2As_2 . *Phys Rev B* (2019) 99:134518. doi:10.1103/PhysRevB.99.134518
- Chandrasekhar BS, Einzel D. The superconducting penetration depth from the semiclassical model. *Ann Phys* (1993) 505:535–46. doi:10.1002/andp.19935050604