

On the use of Infrared Atmospheric Sounding Interferometer (IASI) spectrally resolved radiances to test the EC-Earth climate model (v3.3.3) in clear-sky conditions

Original

On the use of Infrared Atmospheric Sounding Interferometer (IASI) spectrally resolved radiances to test the EC-Earth climate model (v3.3.3) in clear-sky conditions / Della Fera, S; Fabiano, F; Raspollini, P; Ridolfi, M; Cortesi, U; Barbara, F; von Hardenberg, J. - In: GEOSCIENTIFIC MODEL DEVELOPMENT. - ISSN 1991-959X. - 16:4(2023), pp. 1379-1394. [10.5194/gmd-16-1379-2023]

Availability:

This version is available at: 11583/2979849 since: 2023-07-04T18:48:57Z

Publisher:

COPERNICUS GESELLSCHAFT MBH

Published

DOI:10.5194/gmd-16-1379-2023

Terms of use:

This article is made available under terms and conditions as specified in the corresponding bibliographic description in the repository

Publisher copyright

(Article begins on next page)



On the use of Infrared Atmospheric Sounding Interferometer (IASI) spectrally resolved radiances to test the EC-Earth climate model (v3.3.3) in clear-sky conditions

Stefano Della Fera^{1,2}, Federico Fabiano³, Piera Raspollini², Marco Ridolfi⁴, Ugo Cortesi², Flavio Barbara², and Jost von Hardenberg^{5,6}

¹Department of Physics and Astronomy, University of Bologna, Bologna, Italy

²Institute of Applied Physics, National Research Council (IFAC-CNR), Sesto Fiorentino (FI), Italy

³Institute of Atmospheric Sciences and Climate, National Research Council (ISAC-CNR) Bologna, Italy

⁴National Institute of Optics, National Research Council (INO-CNR), Sesto Fiorentino (FI), Italy

⁵Department of Environment, Land and Infrastructure Engineering, Politecnico di Torino, Turin, Italy

⁶Institute of Atmospheric Sciences and Climate, National Research Council (ISAC-CNR), Turin, Italy

Correspondence: Stefano Della Fera (stefano.dellafera@unibo.it)

Received: 10 June 2022 – Discussion started: 3 August 2022

Revised: 5 January 2023 – Accepted: 30 January 2023 – Published: 28 February 2023

Abstract. The long-term comparison between simulated and observed spectrally resolved outgoing longwave radiation (OLR) can represent a stringent test for the direct verification and improvement of general circulation models (GCMs), which are regularly tuned by adjusting parameters related to subgrid processes not explicitly represented in the model to constrain the integrated OLR energy fluxes to observed values. However, a good agreement between simulated and observed integrated OLR fluxes may be obtained from the cancellation of opposite-in-sign systematic errors localized in specific spectral ranges.

Since the mid-2000s, stable hyperspectral observations of the mid-infrared region (667 to 2750 cm^{-1}) of the Earth emission spectrum have been provided by different sensors (e.g. AIRS, IASI and CrIS). Furthermore, the FORUM (Far-infrared Outgoing Radiation Understanding and Monitoring) mission, selected to be the ninth ESA Earth Explorer, will measure, starting from 2027, the terrestrial radiation emitted to space at the top of the atmosphere (TOA) from 100 to 1600 cm^{-1} , filling the observational gap in the far-infrared (FIR) region, from 100 to 667 cm^{-1} .

In this work, in anticipation of FORUM measurements, we compare Infrared Atmospheric Sounding Interferometer (IASI) Metop-A observations to radiances simulated on the basis of the atmospheric fields predicted by the EC-

Earth Global Climate Model (version 3.3.3) in clear-sky conditions. To simulate spectra based on the atmospheric and surface state provided by the climate model, the radiative transfer model σ -IASI has been integrated in the Cloud Feedback Model Intercomparison Project (COSP) package. Therefore, online simulations, provided by the EC-Earth model equipped with the new COSP- σ -IASI module, have been performed in clear-sky conditions with prescribed sea surface temperature and sea ice concentration, every 6 h, over a time frame consistent with the availability of IASI data.

Systematic comparisons between observed and simulated brightness temperature (BT) have been performed in 10 cm^{-1} spectral intervals, on a global scale over the ocean, with a specific focus on the latitudinal belt between 30° S and 30° N.

The analysis has shown a warm BT bias of about 3.5 K in the core of the CO₂ absorption band and a cold BT bias of approximately 1 K in the wing of the CO₂ band, due to a positive temperature bias in the stratosphere and a negative temperature bias in the middle troposphere of the climate model, respectively. Finally, considering a warm BT bias in the rotational–vibrational water vapour band, we have highlighted a dry bias of the water vapour concentration in the upper troposphere of the model.

1 Introduction

The outgoing longwave radiation (OLR) flux, defined as the radiance emitted at the top of the atmosphere integrated over the solid angle and over the spectral range from 100 to about 3330 cm^{-1} ($3\text{--}100\text{ }\mu\text{m}$), is a key quantity controlling the Earth's radiation budget, and its accurate representation in general circulation models (GCMs) is crucial to obtain reliable historical and future simulations. For this purpose, GCMs are regularly tuned by adjusting parameters related to subgrid processes not explicitly represented in the model to constrain the simulated OLR fluxes with observed values (Mauritsen et al., 2012; Hourdin et al., 2017) mainly provided by the Earth Radiation Budget Experiment (ERBE; Barkstrom, 1984) and the more recent Cloud and Earth Radiant Energy System (CERES) mission (Loeb et al., 2018).

The availability of long-term measurements of radiative fluxes, extending over almost 40 years, makes them fundamental to assessing the performance of GCMs. In this framework, Wild (2020) recently examined the radiative global budget of 40 state-of-the-art global climate models participating in the Coupled Model Intercomparison Project phase 6 (CMIP6) through a systematic comparison of broadband energy fluxes at the surface and top of the atmosphere (TOA) with the CERES EBAF (Energy Balanced and Filled) dataset. The study has not only shown an important improvement in the CMIP6 models compared to the earlier model generations but also a persistent intermodel spread, with a standard deviation of 2.8 Wm^{-2} for the all-sky OLR and of 2.6 Wm^{-2} for OLR in clear-sky conditions.

Despite the comparison of observed and simulated broadband fluxes providing fundamental information about the performance of climate models, the detection of model biases is complicated by the spectral integration, which may mask compensation errors in the OLR estimation. Conversely, spectrally resolved OLR contains the signatures of greenhouse gases (GHGs), water and clouds, and monitoring its behaviour by comparison to satellite measurements offers an unprecedented opportunity to identify biases in GCMs and attribute them to a specific portion of the spectrum (Kiehl and Trenberth, 1997) and, thus, to a specific variable.

The first measurements of spectrally resolved radiances from space date back to 1970s, but only starting from the 2000s have long-term and stable hyperspectral observations become available with the key satellite missions of the Atmospheric Infrared Sounder (AIRS, 2002–present; Le Marshall et al., 2006), the Infrared Atmospheric Sounding Interferometer (IASI, 2006–present; Clerbaux et al., 2009) and the Cross-track Infrared Sounder (CrIS, 2011–present; Brindley and Bantges, 2016). The large amount of data available from these sensors opened interesting perspectives for the intercomparisons of instrumental measurements and long-term analysis. Whitburn et al. (2020) computed OLR spectral fluxes, starting from IASI radiances, using precalculated Angular Distribution Models (ADMs), and compared IASI OLR

integrated fluxes to CERES and AIRS broadband OLR products (Huang et al., 2008). Susskind et al. (2012) investigated the OLR interannual variability, using AIRS data from 2002 to 2011, and compared the energy fluxes computed from spectrally resolved radiances to CERES broadband fluxes. In the same framework, Brindley et al. (2015) explored the interannual variability in spectrally resolved radiances at different spatial scales by exploiting 5 years of IASI/Metop-A data. While the aforementioned instruments are able to provide accurate measurements of the entire mid-infrared (MIR) portion of the spectrum, from 667 to 2500 cm^{-1} ($4\text{--}15\text{ }\mu\text{m}$), the far-infrared (FIR) spectral range, from 100 to 667 cm^{-1} ($15\text{--}100\text{ }\mu\text{m}$), which accounts for at least half of the Earth's energy emitted to space (Harries et al., 2008), still lacks systematic measurements from satellites because of the intrinsic difficulties in the development of the proper FIR technology (Palchetti et al., 2020). Planned for launch in 2027, the Far-Infrared Outgoing Radiation Understanding and Monitoring (FORUM) mission will fill this observational gap. FORUM will fly in loose formation with the IASI New Generation (IASI-NG) on the Meteorological operational satellite Second Generation A1 (Metop-SG-A1) satellite (Ridolfi et al., 2020). Thus, for the first time from space, the two instruments will cover the whole Earth's emission spectrum.

In this work, the OLR radiances at TOA are exploited to inspect and evaluate the performance of the EC-Earth (ECE) climate model. In particular, we describe how the comparison between simulated and observed spectrally resolved clear-sky radiances can provide detailed information on model biases in temperature and humidity at different atmospheric levels, representing them in an alternative and reliable way, in addition to retrieval products and reanalysis datasets to verify climate model performance.

For a comparison, we use a climatology of IASI clear-sky radiances built from Level 1C data over the period 2008–2016. In future, the same approach may be applied to FORUM measurements.

In order to simulate upwelling OLR radiances starting from the climate model atmosphere, the fast radiative transfer model (RTM) σ -IASI (Amato et al., 2002) has been implemented in the Cloud Feedback Model Intercomparison Project (CFMIP) Observation Simulator Package (COSP v1.4.1) inside the EC-Earth Global Climate Model. Online historical simulations with prescribed sea surface temperatures (SSTs) and sea ice concentration (SIC) have been performed using COSP- σ -IASI in clear-sky conditions, in both the MIR and FIR spectral regions, over the period 2008–2016, which is compatible with available IASI observations.

Using a similar approach, an existing negative bias in the OLR flux of about 4 Wm^{-2} in the AM2 GCM (Anderson et al., 2004) was investigated by Huang et al. (2006) by comparison of AIRS spectra to simulated radiances and attributed to a water vapour transport deficiency of the model. In the same way, Huang et al. (2007) highlighted the existence of opposite-in-sign biases in water vapour and in CO_2 spectral

bands, which produce fortuitous cancellations of spectral errors in the computation of the total broadband fluxes in the AM2 GCM.

In this work, the comparison between observed and model spectral radiance climatologies is preferred over the comparison between the climatology of atmospheric profiles (from the model and retrieved by IASI measurements) for the following reasons. The retrieval of vertical profiles from measured upwelling spectral radiances is a strongly ill-conditioned inverse problem; therefore, a priori profile estimates are always used to constrain the retrieval. The used a priori information causes both global biases and local systematic smoothing errors in the retrieved profiles (Rodgers, 2000), thus making the comparison of the climatologies of profiles derived from the model and from the inversion of spectral radiance measurements tricky (Rodgers and Connor, 2003).

The paper is organized as follows. In Sect. 2, models and observations are presented and briefly described. In Sect. 2.3, we introduce the implementation of the RTM in the COSP package in the EC-Earth climate model. In Sect. 3, we present the results obtained by the long-term comparison between EC-Earth and IASI, and we discuss the analysis method by highlighting the limits and the difficulties of the model–observations comparison in clear-sky conditions and draw the conclusions. Finally, in Appendix A, we recall the radiometric quantities used in the analysis.

2 Data and methods

2.1 Models

2.1.1 EC-Earth climate model

The EC-Earth climate model version 3.3.3 (Hazeleger et al., 2010; Döscher et al., 2022; <http://www.ec-earth.org>, last access: 16 February 2023, EC-Earth Consortium, 2019) is a state-of-the-art, high-resolution Earth system model participating in the last intercomparison project (CMIP6; Eyring et al., 2016). EC-Earth includes advanced, robust and validated components for the atmosphere (the Integrated Forecast System, IFS, model cy36r4), the ocean (NEMO 3.6; Madec et al., 2017), sea ice (LIM3; Fichefet and Maqueda, 1997) and land processes (H-TESSSEL; Balsamo et al., 2009). The model has been tuned by minimizing the differences in radiative fluxes at TOA and at the surface with respect to the observed fluxes from the CERES EBAF-Ed4.0 dataset (Döscher et al., 2022).

In this work, atmosphere-only historical simulations have been performed with prescribed SSTs and SIC from January 2008 to December 2016. The prescribed SSTs and SIC come from the Atmospheric Model Intercomparison Project (AMIP) protocol configuration for CMIP6 (Eyring et al., 2016) and are provided as standard input to all models par-

ticipating to CMIP6 (see also <https://pcmdi.llnl.gov/mips/amip/>, last access: 16 February 2023, and <https://esgf-node.llnl.gov/projects/input4mips/>, last access: 16 February 2023). The dataset is created with the procedure described in Hurrell et al. (2008) and merges the HadISST observational dataset (since 1870) and the more recent NOAA Optimum Interpolation (OI; since 1981). EC-Earth reads the SSTs and SIC as mid-month boundary conditions, which are then interpolated daily in the model run.

Furthermore, GHGs concentrations used in the simulation are derived from the standard dataset applied for the historical CMIP6 runs (Meinshausen et al., 2017). More in detail, for the last 2 years (2015–2016), we adopted the SSP2-4.5 scenario data, which matches observations until 2017 (Meinshausen et al., 2020).

In this configuration, the standard CMIP6 resolution TL255L91-ORCA1 is used; therefore, the atmospheric model IFS is characterized by a horizontal resolution of approximately 80 km and by 91 vertical layers (Döscher et al., 2022).

In order to extract spectrally resolved OLR radiances from EC-Earth, we implemented the σ -IASI radiative transfer model (RTM; Amato et al., 2002) inside the COSP module (v1.4.1), which is a simulator package able to map the climate model state into synthetic observations which are directly comparable to the measurements of the real instruments (Bodas-Salcedo et al., 2011). The current version of COSP implemented in EC-Earth includes simulators for passive sensors such as CloudSat, Moderate Resolution Imaging Spectroradiometer (MODIS) and Multi-angle Imaging SpectroRadiometer (MISR) and active sensors like CALIPSO (Cloud-Aerosol Lidar and Infrared Pathfinder Satellite Observations). It also contains a simulator of the International Satellite Cloud Climatology Project (ISCCP) dataset and an interface for an old version (v9.1) of (Radiative Transfer for the Television Infrared Observation Satellite (TIROS) Operational Vertical Sounder (RTTOV), which can be linked to the package.

2.1.2 The σ -IASI radiative transfer model

σ -IASI is a monochromatic RTM (Masiello et al., 2022) able to simulate upwelling infrared radiances at high resolution (0.01 cm^{-1}), which can be convolved with the spectral response function (SRF) of any instrument. More specifically, it has been customized to simulate the measurements by IASI-NG and of the future FORUM instrument. For each atmospheric layer, absorbing gas and wavenumber in the $10\text{--}3000 \text{ cm}^{-1}$ range, the optical depths are computed using polynomial parameterizations determined on the basis of accurate cross sections computed by KLIMA, a validated line-by-line RTM developed at IFAC-CNR (Del Bianco et al., 2013; Cortesi et al., 2014). The inputs to the σ -IASI RTM are surface pressure and temperature, surface spectral emissivity and profiles of temperature, humidity and concentrations of

11 gases (O_3 , CO_2 , N_2O , CO , CH_4 , SO_2 , HNO_3 , NH_3 , OCS , HDO and CF_4) and cloud parameters (cloud cover, ice and liquid water content, effective radius of ice and liquid particles). The radiative transfer calculations are then performed using 61 fixed pressure levels and on a fixed wavenumber grid with a step of 0.01 cm^{-1} . The radiative code is also able to compute Jacobians with respect to all the geophysical variables, including the cloud parameters. The σ -IASI RTM has been extensively validated against IASI measurements (Liuzzi et al., 2017), aircraft-based measurements (NAST-I; Grieco et al., 2007) and ground-based measurements (Serio et al., 2008).

2.2 Observations

2.2.1 IASI

As part of the payload of the Metop series of EUMETSAT polar-orbiting meteorological satellites (Edwards and Pawlak, 2000), IASI is composed of a Fourier transform spectrometer and of an associated Integrated Imaging Subsystem (IIS), a broadband radiometer with a high spatial resolution for the co-registration with the Advanced Very High Resolution Radiometer (AVHRR; Blumstein et al., 2004). Metop is characterized by a sun-synchronous orbit, with the equatorial crossing time at 09:30 and 21:30 LT (daytime and nighttime at local times, respectively). IASI has been providing continuous data since October 2006, when it was first launched aboard Metop-A. It was followed by IASI-B (Metop-B), launched in 2012, and IASI-C (Metop-C), launched in 2018.

All the three IASI instruments cover the MIR spectral range, from 645 to 2760 cm^{-1} , with a spectral resolution of 0.5 cm^{-1} and a spectral sampling of 0.25 cm^{-1} , for a total of 8461 spectral channels. The absolute calibration accuracy of the instrument is expected to be within 0.5 K (https://iasi.cnes.fr/en/IASI/radiom_res.htm, last access: 16 February 2023).

In order to obtain a uniform global coverage, IASI acquires measurements by scanning its field of regard (FOR) across the orbit track, with viewing angles that range from nadir up to 48.3° on either side of the satellite track. Angularly, each FOR has a dimension of about $3.3^\circ \times 3.3^\circ$ which, on the ground, corresponds to a footprint of about $50 \times 50\text{ km}$ at nadir. For each FOR (30 in total for the scan), the instrument simultaneously acquires four spectra, each with a field of view (FOV) of about 12 km in diameter at nadir.

In this work, we consider IASI data from the Fundamental Climate Data Record (FCDR) of reprocessed Metop-A Level 1c product (https://doi.org/10.15770/EUM_SEC_CLM_0014), provided by EUMETSAT through the European Weather Cloud (EWC) service. On the basis of this dataset, which is homogeneous and validated over the whole selected time

period (2008–2016), we build a monthly clear-sky radiance climatology on a global scale.

First, we use the quality flag (variable `GQisFlagQual`) available in the dataset to discard corrupted spectra. Then, among the 120 observed spectra of each scan across the satellite track, we only select those corresponding to the 8 pixels closest to the nadir view. The clear-sky spectra are detected by exploiting the cloud cover derived from the AVHRR (variables `GEUMAVHRR1BCLDFRAC` and `GEUMAVhrr1BQual`; Guidard et al., 2011). In the same way, we distinguish the land/ocean ground surface through the information (variable `GEUMAvhrr1BLandFrac`) provided by the AVHRR. More details about the IASI climatology will be provided in Sect. 3.2.

2.2.2 CERES

In this work, we exploit the `CERES_SYN1deg_Ed4A` products to obtain information about the observed cloud cover field on a global scale (Doelling et al., 2016). Among the various products, the dataset provides 1° regional cloud coverage every 3 h as derived from MODIS and geostationary satellites.

The high temporal resolution of the product allows us to easily find coincidences with IASI measurements and to analyse the large-scale atmospheric conditions in which the IASI spectrum has been detected. As discussed in Sect. 3.2, this is useful for the analysis, since CERES data refer to an area ($1^\circ \times 1^\circ$) of extension similar to the EC-Earth atmospheric resolution ($0.7^\circ \times 0.7^\circ$). We also use the CERES Energy Balanced and Filled (EBAF) dataset v.4.1 (Loeb et al., 2020) to estimate the observed clear-sky broadband fluxes.

2.3 Implementation of the σ -IASI RTM in the EC-Earth climate model

We created a specific GCM–RTM interface inside the COSP module of the EC-Earth climate model, in order to perform the radiative transfer calculations online, passing the instantaneous atmospheric fields on a global scale to the RTM with a time step of 6 h.

In the radiative scheme of IFS, the spectral emissivity of the surface is assumed to be constantly equal to 0.99 outside the atmospheric window region ($800\text{--}1250\text{ cm}^{-1}$). Conversely, within this region, the emissivity depends on eight types of surfaces, namely open sea, sea ice, interception layer, low and high vegetation, exposed and shaded snow and bare ground. These emissivity values are interpolated to a regular wavenumber grid with steps of 10 cm^{-1} , in the range from 100 to 3000 cm^{-1} and supplied to the σ -IASI RTM. The surface pressure and surface temperature are directly supplied to σ -IASI, while the simulated temperature, humidity and gases concentration profiles are first interpolated to the fixed pressure grid used by σ -IASI. Carbon dioxide, methane and nitrous oxide concentrations are horizon-

tally and vertically uniform, depending only on time. The ozone mixing ratio used in the model simulation is a function of pressure, latitude and time, as described in Fortuin and Langematz (1995). Finally, concentrations of the other trace gases required by σ -IASI (SO_2 , CO, HNO_3 , NH_3 , OCS, HDO and CF_4) are not modelled in the IFS; thus, they are extracted from the U.S. standard atmosphere of the Atmospheric Constituent Profiles dataset (Anderson et al., 1986).

In order to minimize the huge impact of the radiative code on the GCM computing performance, the look-up tables (LUTs) of optical depth parametrization coefficients are allocated and loaded from file only once at the beginning of the simulation and then stored and deallocated at the end of the process. Moreover, the outgoing radiance is computed only once every four latitude \times longitude grid points of the EC-Earth model, for a total of about 6000 simulated spectra every 6 h.

To limit the data storage required, the high-resolution spectrum computed by σ -IASI is convolved with a 10 cm^{-1} wide box function and sampled every 10 cm^{-1} . Since EC-Earth does not include variables with a spectral dimension, we stored the simulated spectra in new auxiliary 4D variables declared in the IFS grib code scheme, using the dimension corresponding to vertical model levels as the spectral dimension. These simplifications allowed us to strongly reduce the computational cost of the model run, passing from an initial value of 90 000 core hours per simulated year (CHPSY) to 4000 CHPSY, which is comparable to the cost of the other simulators already present in COSP and about 8 times higher than an EC-Earth standard atmosphere-only simulation without COSP (about 500 CHPSY).

3 Results and discussion

3.1 Sensitivity of a simulated OLR spectrum to atmospheric temperature and gas concentrations

In order to better correlate the differences between modelled and observed radiances to model biases, we first studied, for a reference tropical atmosphere, the sensitivity of the radiance, computed with σ -IASI, to the model temperature and trace species concentration.

Figure 1 shows a spectrum of the TOA spectrally resolved radiance simulated by σ -IASI in clear-sky conditions in the spectral range between 50 and 2250 cm^{-1} . The spectral intervals measured by IASI and FORUM are highlighted, together with the approximated spectral ranges of the atmospheric window regions and the main gas absorption bands, which are summarized in Table 1.

The FIR region (from 100 – 667 cm^{-1}) is dominated by the signature of the rotational band of water vapour (blue shade), whose study will be consolidated with the help of future FORUM measurements (Brindley and Harries, 1998). In anticipation of FORUM measurements, we focus here on part of

Table 1. Approximated spectral intervals of the atmospheric windows and the main absorption bands highlighted in Fig. 1.

Acronym	Band details	Spectral range (cm^{-1})
WV1	Water vapour (1)	100–500
CO ₂	Carbon dioxide	640–750
AW1	Atmospheric window (1)	800–950
O ₃	Ozone	980–1080
AW2	Atmospheric window (2)	1100–1250
CH ₄	Methane	1200–1400
N ₂ O	Nitrous oxide	1250–1350
WV2	Water vapour (2)	1400–1850

the MIR region of the spectrum measured by IASI, specifically between 645 – 2250 cm^{-1} . In this region, the spectrum undergoes a strong absorption between 640 – 750 cm^{-1} due to CO₂. In more detail, in the core of the CO₂ band (660 – 670 cm^{-1}), the atmosphere appears opaque from space, and the radiance reaching the TOA originates from the stratosphere. On the contrary, in the wings of the CO₂ band measured by IASI (700 – 750 cm^{-1}), the effective emission level is located in the middle to upper troposphere. From 800 to 950 cm^{-1} and from 1100 to 1250 cm^{-1} (red shades), the atmosphere is almost transparent, and the radiance reaching the TOA mainly originates from the surface or the atmospheric layers closest to the surface. Other strong absorption bands are located between 980 and 1080 cm^{-1} (ozone; green shade), between 1200 and 1400 cm^{-1} (methane; pink shade) and between 1250 and 1350 cm^{-1} (nitrous oxide; grey shade). Finally, the rotational–vibrational water vapour band, located between 1400 and 1850 cm^{-1} , is highlighted.

The radiance reaching the TOA originates mainly from upper atmospheric layers in the spectral regions of strong absorption, while in more transparent regions it originates from the lower atmospheric layers (Whitburn et al., 2021). More accurate information on the atmospheric layers contributing to the observed OLR spectrum can be extracted from the analysis of the Jacobians, defined as the partial derivatives of radiance with respect to any atmospheric parameters. In Fig. 2, we show the Jacobians of the most relevant variables computed with the σ -IASI RTM for a tropical standard atmosphere over ocean at the IASI sampling of 0.25 cm^{-1} from 10 to 2250 cm^{-1} . For a better readability of the graph, the Jacobian values shown are the absolute values and normalized, separately, to their maximum value for each quantity.

As we can see from Fig. 2, the entire spectrum is sensitive to the temperature profile (red areas).

- The atmospheric window AW1 is more transparent than the atmospheric window AW2, where the radiation is slightly sensitive to the water vapour concentration. In the first case (AW1), the radiation is affected by the temperature of the atmospheric layers between 0 and 3 km,

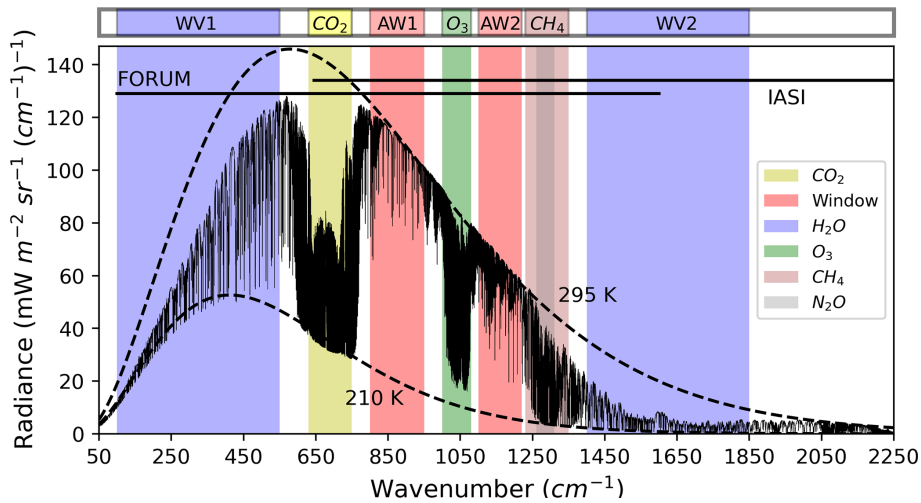


Figure 1. Spectrum simulated in clear-sky conditions over tropical ocean by the σ -IASI RTM. The main absorption bands are highlighted. Dashed lines show the equivalent blackbody emission at typical surface (295 K) and tropopause (210 K) temperatures.

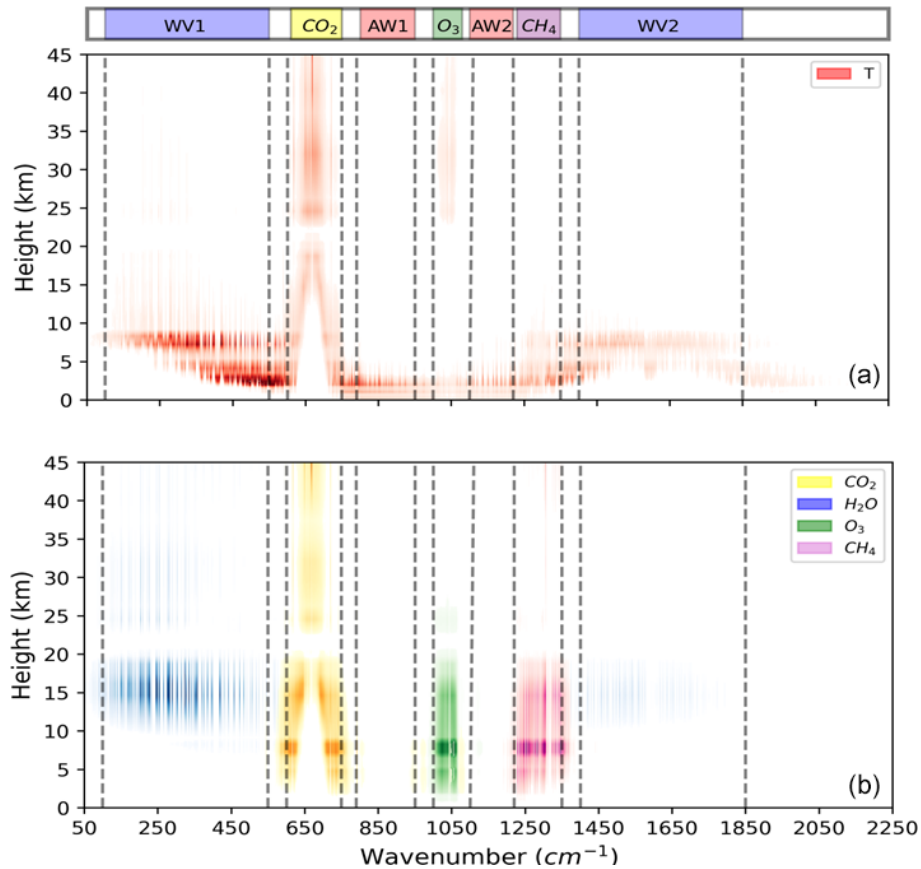


Figure 2. Absolute values of normalized Jacobians computed with σ -IASI for a tropical standard atmosphere with respect to the temperature (a) and gases concentration (b). The N_2O Jacobian is not shown because the CH_4 Jacobian completely overlaps it.

while in the second one (AW2), it is controlled by the temperature of layers at greater heights – up to about 7 km.

- The FIR is strongly affected by the temperature of lower and middle troposphere (3–10 km).
- The CO₂ absorption band is mainly sensitive to stratospheric temperature (25–40 km) in the core of the band and to mid-to-upper-tropospheric temperature (5–20 km) in the wing of the band.
- The O₃ band is affected by surface, lower troposphere and lower stratosphere temperature.
- The rotational–vibrational band of water vapour WV2 is sensitive to tropospheric temperature (3–10 km).

Specific features can be noticed for each gas.

- The outgoing radiance between 1400 and 1850 cm⁻¹ (WV2) is attenuated by H₂O in the upper troposphere (blue area) from approximately 10 to 20 km. Water vapour also reduces the OLR in the FIR region (WV1).
- Between 980 and 1080 cm⁻¹, the ozone concentration strongly influences the spectrum over most of the troposphere (green area).
- At the same levels, the spectrum is affected by CH₄ concentration between 1200 and 1400 cm⁻¹ and by N₂O between 1250 and 1350 cm⁻¹ (not shown).
- In the CO₂ band, the spectrum is sensitive to CO₂ concentration at the same height at which it is particularly sensitive to the temperature profile. Thus, it is influenced by the CO₂ concentration in the stratosphere in the core of the band, while in the wings of the band, it is sensitive to the CO₂ present in the troposphere.

A change in sign of the Jacobian is observed for all gases between the troposphere and stratosphere (see Fig. S1 in the Supplement). In fact, in the troposphere, absorption processes dominate the emission ones (so increased concentration reduces the OLR), while the opposite happens in the stratosphere.

3.2 Model–observation comparison strategy

As already mentioned, due to the complication with comparing all-sky measurements at different spatial resolutions, here we focus only on the clear-sky part, leaving the analysis of cloudy sky to a future work. In addition, the low temporal sampling of the model (the RTM is called every 6 h) and the uncertainties in the land surface emissivity do not allow us to perform accurate comparisons between measured and observed radiances over land.

Therefore, we focus on the comparison of daytime measurements and model outputs over ocean.

The selection process of simulated and measured spectra used to build the clear-sky radiance climatologies goes through the following steps. To save computing time, the EC-Earth model simulates spectra in correspondence of only once every four latitude × longitude grid cells (see Fig. S2 in the Supplement). The dimension of the model cells is 0.7 × 0.7°. For each of these cells, we compute the monthly average radiance using only the simulated spectra with the local solar time between 6 and 12 h over the ocean and only if the current cloud cover of the model cell is less than 30 %. Generally, the radiative computation in clear-sky conditions in climate models exploits the same all-sky properties (e.g. surface temperature, temperature/humidity profile, surface albedo and aerosol) but with the clouds removed. Since the temperature and humidity profiles of the model are indirectly affected by the presence of clouds, this causes a systematic negative bias when comparing observed and simulated clear-sky radiative fluxes. According to Sohn et al. (2006), this difference can reach up to -12 Wm^{-2} in the convectively active regions at tropical latitudes. In the CERES EBAF 4.1 dataset, a new adjustment factor is introduced to generate the TOA clear-sky fluxes that are more in line with the clear-sky fluxes represented in climate models, as described in Loeb et al. (2020) and Loeb et al. (2018). On the contrary, in the EC-Earth vs. IASI comparison, to mitigate this problem, we selected only the spectra computed over geographical grid points in which the simulated total cloud cover is less than 30 %. This threshold is the result of a trade-off between reducing the impact of this potential source of bias and keeping a significant number of measurements in the analysis. In principle, a lower threshold would be more desirable, but at the same time, this reduces the statistics. We then compute the monthly zonal averages by averaging the monthly mean radiances relating to the model cells within the considered latitude belt (Della Fera, 2022). With this procedure, all model cells contribute to the zonal mean with equal weight.

Concerning the measurements, IASI spectra are selected from 2° × 2° cells centred on the ECE model cells for which spectra are simulated. On the one hand, the dimension of these cells is large enough to allow the selection of a sufficiently large number of IASI spectra. On the other hand, these cells do not overlap each other; thus, each IASI measurement contributes only once to the statistics. For each of these cells, we compute the monthly average radiance using IASI measured spectra that meet the following conditions:

- The radiance is measured in daytime, in the near-nadir geometry over the ocean, and corresponds to clear-sky conditions (cloud mask of AVHRR = 0).
- The measured radiance falls into a CERES grid cell, measured within 3 h from the IASI observation time, with cloud cover less than 30 %. Since CERES grid cells have a dimension of 1 × 1°, similar to the ECE model cells, by applying the same threshold to the cloud cover,

we ensure the consistency of the atmospheric conditions between the model and observations.

Finally, we compute the monthly zonal averages of observed radiances by averaging the monthly means obtained at the $2^\circ \times 2^\circ$ cells falling within the selected latitude belt (Della Fera, 2022).

Since we have few measured spectra over polar regions, and the filter used to select clear-sky scenes is less accurate here, we limit the comparison for the latitudes ranging from 60° S to 60° N. The number of selected spectra is not homogeneously distributed, and most of the selected spectra are located in the subtropics ($15\text{--}30^\circ$ N and $15\text{--}30^\circ$ S), corresponding to the descending branch of the Hadley cell. Moreover, the used filters particularly affect the mid-latitudes ($45\text{--}60^\circ$ N and $45\text{--}60^\circ$ S), where only few IASI pixels survive to the selection process. This is one of the reasons why we will mainly focus on the tropical regions (30° S– 30° N), for which we have a large number of both modelled and observed spectra (see Figs. S3 and S4 and Table S1 in the Supplement).

3.3 Assessment of EC-Earth spectral biases in simulated clear-sky radiances with respect to IASI measurements

On the basis of these assumptions, a systematic comparison has been performed using a dataset that covers the years from 2008 to 2016, for latitudes ranging from 60° S to 60° N, over the ocean.

Figure 3 shows the 9-year zonal average of the brightness temperature (BT; defined in Appendix A) differences (model minus observations). Plots describing BT biases allow us to show more clearly the differences over all the selected spectral range. On the contrary, radiance biases in the Planckian tail tend to become too small to be visible. Considering that model SSTs are constrained to be equal to the observed values, we expect small differences between model and IASI spectral radiances in the atmospheric spectral windows (AW1 and AW2). Thus, the limited discrepancies in BTs obtained in the spectral window AW1 in the tropical belt (30° S, 30° N) confirm the self-consistency of the performed comparison. Instead, as mentioned in Sect. 3.1, the atmospheric window AW2 is more sensitive to the presence of water vapour and shows a small positive bias, approximately equal to 0.3 K. At mid-latitudes, however, especially in the Southern Hemisphere, a negative model bias of about 1 K is present in both the atmospheric windows, thus making difficult the comparison of all the frequencies at these latitudes. As mentioned before, this model bias is thought to be linked to the limited number of spectra available at these latitudes and also to the cloud cover representation in the model. This aspect will be further discussed in Sect. 3.4.

Significant discrepancies, of about 3.5 K, are present in the CO_2 band at all latitudes, which might indicate a warm bias in the model temperature of the upper troposphere and stratosphere. A warm bias of about 1 K is also seen in the

rotational–vibrational water vapour band (WV2), but this is limited to the tropical latitudinal belt between 30° S and 30° N.

In a similar way, the bias visible in the O_3 band is strictly dependent on latitude and is characterized by a positive sign at the tropics, while it tends to take negative values at mid-latitudes. As described in Sect. 3.1, this spectral band is affected by surface, lower troposphere and stratospheric temperatures.

On the basis of the above considerations, we focus our analysis on the discrepancies found over tropical ocean, where the BT differences in the atmospheric windows are close to zero.

Figure 4 shows the 2008–2016 average of the model-simulated and observed BTs over ocean, at tropical latitudes (30° S, 30° N; top panels) and their differences (bottom panels). In this case, we see that the model is generally in good agreement with the observations, and the most significant discrepancies are found in the CO_2 band, in the O_3 band and along the water vapour absorption band (WV2).

It is possible to characterize the height dependence of the model temperature bias by focusing the analysis on specific spectral bands. Therefore, Fig. 5 shows the 9-year monthly averages of simulated and observed BTs over ocean in four spectral intervals, together with the respective temperature Jacobians, which highlight the atmospheric levels that are most sensitive to the temperature.

The largest sensitivity to temperature in the stratosphere is found in the spectral interval centred at 660 cm^{-1} (Fig. 5a), while the channel at 700 cm^{-1} is sensitive to temperature in the upper troposphere and stratosphere (Fig. 5b). The maximum sensitivity to temperature in the middle troposphere is reached in the spectral interval centred at 730 cm^{-1} . Finally, as usual, the spectral channels in the atmospheric window, in this case averaged between 845 and 855 cm^{-1} , are a proxy for the lower troposphere and surface temperature. As already mentioned, the spectral intervals centred at 660, 700 and 730 cm^{-1} are not only sensitive to temperature but also to the CO_2 concentration. The model, however, uses CO_2 global average concentrations smoothly increasing with time, according to the actual measurements; thus, any uniform warm model bias cannot be attributed to an erroneous carbon dioxide concentration (see Sect. 2.1). The regional and seasonal variabilities in the CO_2 concentrations amount at most to a few parts per million and thus could cause only small local, seasonal biases.

Therefore, Fig. 5a confirms the presence of a strong stratospheric warm bias in the model. The more we move towards the lower layers of the atmosphere (Fig. 5a and b), the more the bias is reduced, until its sign reverses in the spectral band centred at 730 cm^{-1} (see Fig. 5c), which is sensitive to the middle troposphere temperature. Finally, as expected, the bias is very small in the atmospheric window over ocean (Fig. 5d). A more peaked seasonality is present in the ECE curve, which is, however, within the standard deviation of the

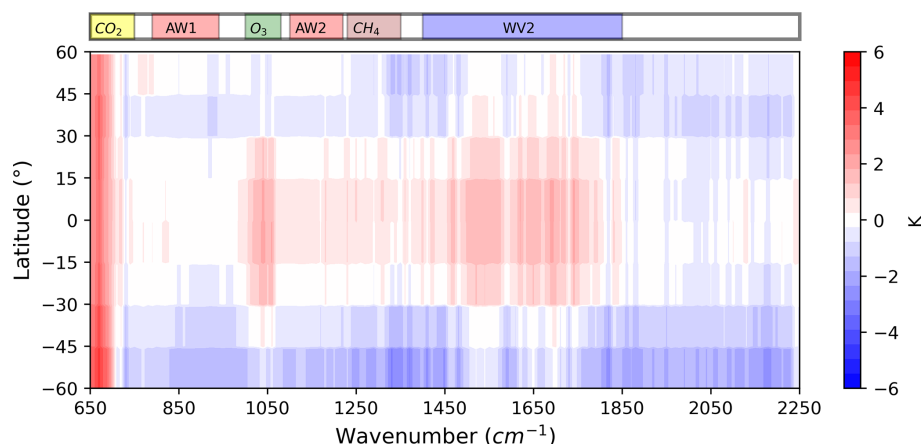


Figure 3. Brightness temperature (BT) differences (model–observations) over ocean, averaged over the period 2008–2016.

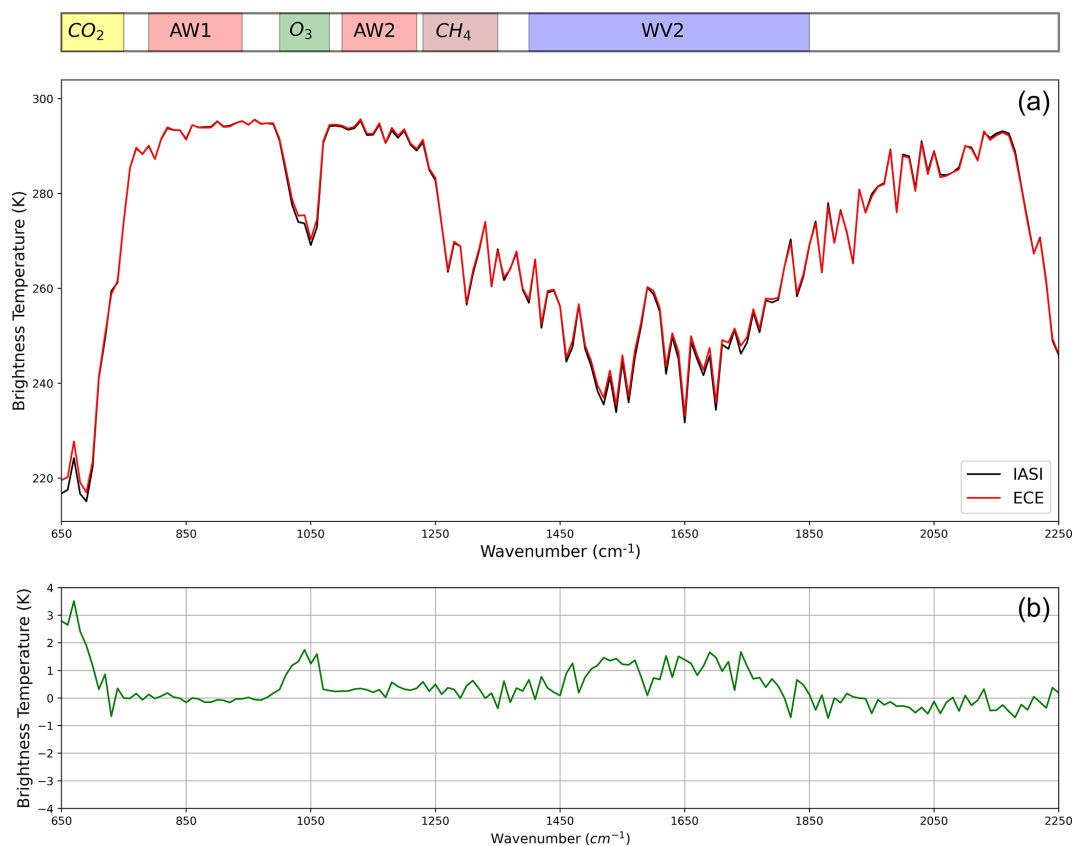


Figure 4. Average (2008–2016) brightness temperatures computed by EC-Earth and measured by IASI over the tropical ocean (30° S, 30° N) are shown in panel (a). Panel (b) shows the BT differences (model minus observation).

two curves. The BT differences between ECE and IASI in the spectral intervals of Fig. 5 are also shown on a global scale in Figs. S5, S6, S7 and S8 in the Supplement. From these plots, it is evident that the biases are homogeneous over the tropical and subtropical latitudes, where we are comparing the simulated and observed BT. Some compensating biases are only present at 850 cm^{-1} in the atmospheric window. However,

these differences are generally very small and always within 1 K.

We now exploit the intervals 725–735 and 1395–1405 cm^{-1} to explore the accuracy of the representation of the water vapour concentration in the model. In fact, as illustrated by the integrated Jacobians reported in Fig. 6a, the spectral band at 1400 cm^{-1} (WV2) is sensitive both to the

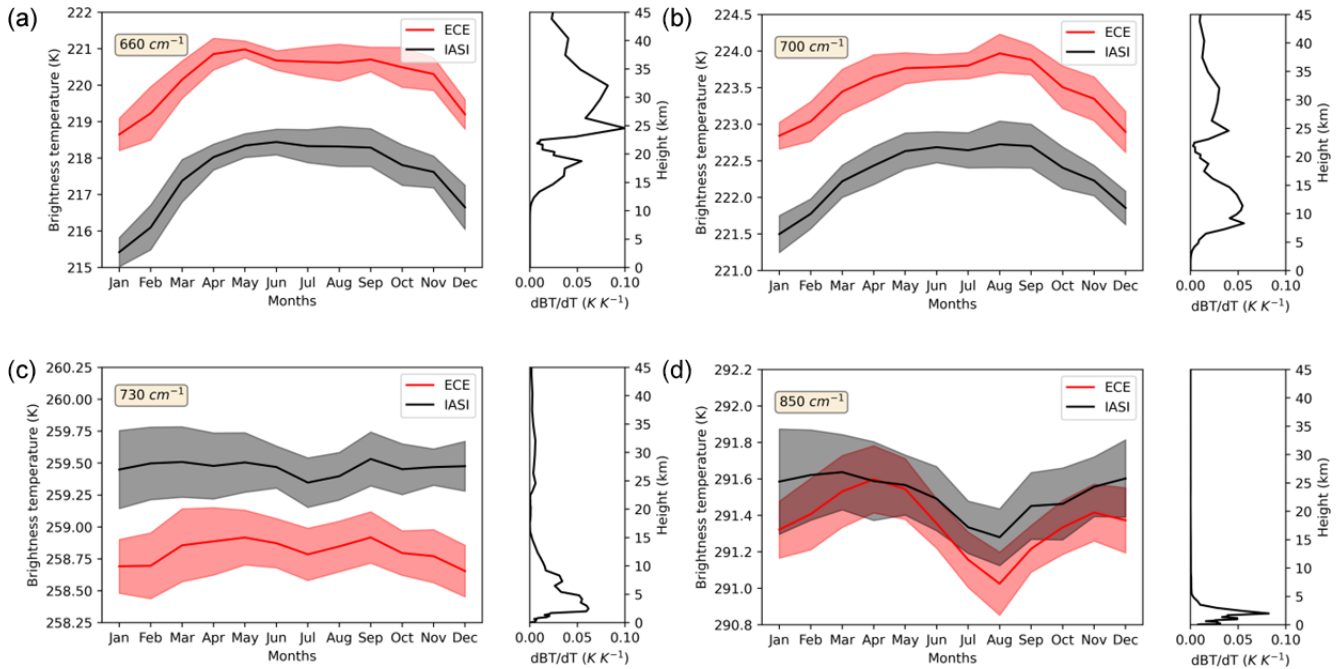


Figure 5. Brightness temperature (BT) averaged in different spectral intervals over tropical ocean (30° S, 30° N) and their respective Jacobians of BT with respect to the temperature. The red line identifies the model BT, while the black line describes the observed BT. The shadow areas represent the standard deviations. Note the different vertical scales used in the plots.

tropospheric temperature and to the upper tropospheric water vapour concentration. In both spectral intervals, the maximum sensitivity to temperature occurs between 3 and 10 km (green and pink lines in Fig. 6b). Since the previous analysis (Fig. 5c) has shown a small negative BT bias at 730 cm^{-1} assigned to a cold bias of the middle troposphere temperature in the model, if the water vapour concentration were well represented, then we would see a negative BT bias in the spectral band $1395\text{--}1405\text{ cm}^{-1}$. However, since the model BT in the spectral interval centred at 1400 cm^{-1} shows a slightly positive bias (Fig. 6c), we conclude that the negative temperature bias of the model seems to be overcompensated for by a dry bias of the water vapour profile in the 7–15 km range. In fact, a too dry upper troposphere in the model allows more radiant energy to reach the TOA, as also witnessed by the negative sign of the water Jacobian shown in Fig. 6a. BT differences between ECE and IASI in the spectral band $1395\text{--}1405\text{ cm}^{-1}$ are also shown on a global scale in Fig. S9 in the Supplement. Also, in this case, the positive bias is fairly uniform in the latitudinal band between 30° S and 30° N.

Finally, as in the CO_2 case, EC-Earth uses local climatological monthly means of methane and ozone concentrations; thus, the discrepancies occurring in the ozone and methane absorption bands (not shown) are most likely due to biases in the simulated temperature.

For the same period, the average clear-sky OLR flux computed by EC-Earth over ocean, between the latitudes 30° S and 30° N, is equal to $288.47 \pm 0.34\text{ Wm}^{-2}$. This is slightly

overestimated compared to the analogous average clear-sky flux obtained from CERES observations that is equal to $287.36 \pm 0.32\text{ Wm}^{-2}$. From the Stefan–Boltzmann law, considering the power radiated by a blackbody at the temperature of 295 K (about the average surface temperature of tropical ocean), a difference of 1 Wm^{-2} corresponds to a BT difference of about 0.2 K, i.e. smaller than the biases localized in specific wavenumber ranges that we found from the spectral analysis.

To date, systematic FIR spectral radiance measurements from space are not yet available; thus, we are not able to characterize the discrepancies between the model and observations in the whole OLR spectral range. Despite that, the analysis presented shows clearly that a good agreement between simulated and observed total OLR fluxes may be obtained from the cancellation of opposite-in-sign systematic errors localized in specific spectral ranges. In conclusion, observations of spectrally resolved OLR fluxes from space are needed for a proper tuning of model parameters.

3.4 Discussion

We have seen that a perfect spatial and temporal matching of measurements and simulations is very difficult to actualize; therefore, systematic biases could also arise from the strategy adopted to sample the data.

In order to evaluate the impact of the data sampling strategy, we carried out the following test. We interpolated the EC-Earth model cloud fraction and the measured CERES

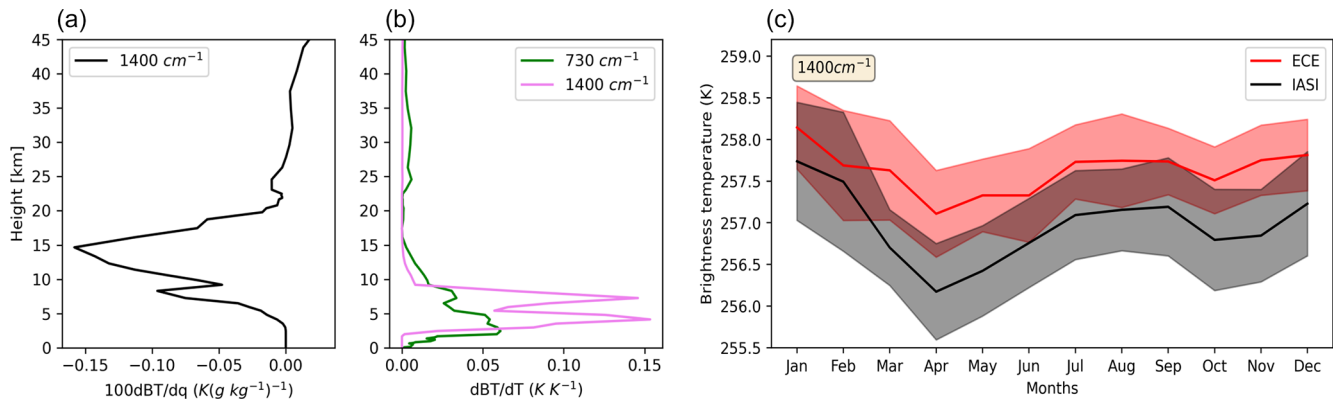


Figure 6. (a) Jacobian of water vapour integrated over the spectral band $1395\text{--}1405\text{ cm}^{-1}$ and (b) Jacobian of the temperature integrated over the spectral band $1395\text{--}1405$ and $725\text{--}735\text{ cm}^{-1}$. (c) Comparison of the brightness temperature in the spectral band centred at 1400 cm^{-1} .

cloud fraction to a regular space grid of $1^\circ \times 1^\circ$ and a time step of 6 h. Then, assuming, alternatively, the interpolated CERES and EC-Earth cloud fractions, we built the statistical distributions for the year 2008 of the same observed SSTs for the grid points with cloud fractions less than 30 %. Figure 7 shows the SST statistical distributions obtained for EC-Earth and CERES cloud fractions at tropical (Fig. 7a) and mid-latitudes (Fig. 7b). At tropical latitudes, the SST distributions obtained with the model (red boxes) and CERES (grey boxes) cloud fractions are quite similar; the average values differ by 0.4 K, and the standard deviations ($\approx 4.5\text{ K}$) differ by less than 0.1 K. On the other hand, at southern mid-latitudes (-60° S , -45° S ; see Fig. 7b), the offset between the two distributions amounts to 0.9 K.

The larger bias of 0.9 K at the southern mid-latitudes is likely contributing to the observed negative model BT bias found in the atmospheric window at the southern mid-latitudes in Fig. 3. The good agreement between the two SST distributions found in the tropical latitude belt strengthens our confidence in the previous analyses we presented for tropical latitudes. At these latitudes, the choice of comparing model and measured climatologies corresponding to cloud fractions smaller than 30 % ensures that the biases introduced by the data sampling strategy smaller than $\approx 0.5\text{ K}$, i.e. also smaller than most of the model biases inferred from Fig. 5.

We further tested the results of the spectral analysis by comparing the temperature and humidity obtained from the climate model outputs with data provided by ERA5, the latest climate reanalysis from ECMWF. The reanalysis combines available data from different instruments (satellites, ships, weather stations, etc.) with models to generate a complete and continuous global coverage of the main geophysical variables (Hersbach et al., 2020). Figure 8a shows the temperature differences between EC-Earth and ERA5 reanalysis averaged over 15 years (2000–2014). The strong warm bias in the stratosphere confirms the discrepancy found in our spectral analysis in the region between 655 and 665 cm^{-1} . On the other hand, our spectral analysis did not directly detect

the cold model bias visible in Fig. 8 at the tropopause. In fact, as shown in Fig. 2, the OLR spectrum is not very sensitive to temperature and gas concentrations at these heights. In addition, the spectral band centred at 700 cm^{-1} (Fig. 5b) is partially affected by the positive stratospheric temperature bias, which can easily mask the underlying negative bias at the tropopause. We also note that the small negative model temperature bias present in the troposphere is consistent with the difference in BTs found in the spectral band at 730 cm^{-1} (Fig. 5c).

Figure 8b shows the percentage differences between EC-Earth and ERA5 specific humidity averaged over the period 2000–2014. The absolute values of these differences are visible in Fig. S10 in the Supplement. The negative EC-Earth humidity bias found in the upper troposphere and stratosphere is consistent with the positive bias detected in the model-simulated BTs in the spectral interval between 1395 and 1405 cm^{-1} . Indeed, the drier atmosphere of the model at these heights implies a greater amount of radiation reaching the TOA in the water vapour band.

We also provide an estimation of the BT bias inferred from the temperature and water vapour biases of the EC-Earth model with respect to ERA5. First, we computed the mean profile of these temperature and water vapour biases along the tropical latitudes between 30° S and 30° N . Then, we performed the scalar product of these profiles with the respective Jacobians (Figs. 5 and 6), which was computed assuming the profiles of a standard tropical atmosphere. The result of this estimation is summarized in Table 2.

The clear-sky BT biases found in the comparison with IASI (Sect. 3.3) are generally consistent with the estimates inferred here from the comparison with ERA5. Remarkably, the sign is consistent in all cases, although some differences are found in the magnitude. The spectral analysis indicates a stronger positive bias in the stratosphere (660 cm^{-1}) than inferred from ERA5. This is also seen in the spectral band at 700 cm^{-1} . In addition, we also have a more pronounced negative bias at 730 cm^{-1} , possibly produced by a larger

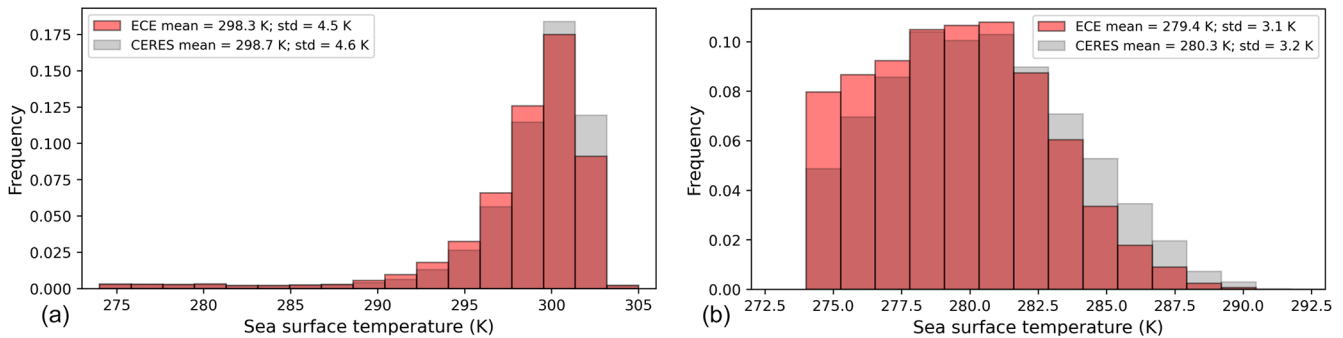


Figure 7. Distribution of sea surface temperature of the model for cloud fraction < 30 %, assuming the EC-Earth (red) or the CERES (grey) cloud fractions. The distributions were computed for tropical latitudes (-30° S, $+30^{\circ}$ N) (a) and mid-latitudes (-60° S, -45° S) (b).

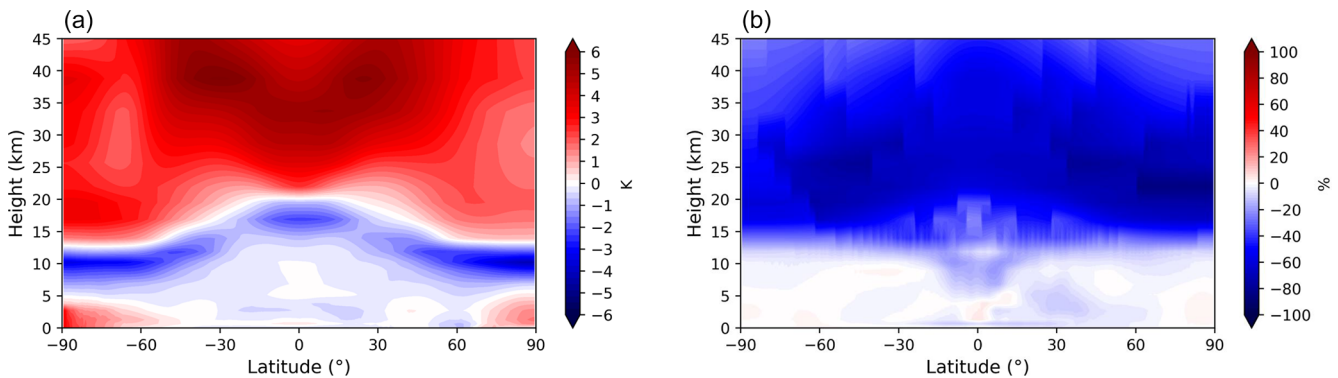


Figure 8. Differences between the EC-Earth climate model and ERA5 reanalysis temperatures (a) and percentage differences between EC-Earth climate model and ERA5 specific humidity. Differences are a 15-year (2000–2014) average.

negative temperature bias of the model in the middle troposphere. Finally, the BT biases for the spectral bands at 850 and 1400 cm^{-1} show a very good agreement with the estimates obtained from the ERA5 reanalysis. The positive BT bias at 1400 cm^{-1} is caused by the negative bias of the model water vapour in the upper troposphere.

It is important to note that the discrepancies between the BT biases, described in the last two rows of Table 2, may arise from different causes. First, the comparison of temperature and water vapour concentration profiles of Fig. 8 are performed in all-sky conditions, while the spectral analysis reflects the differences observed in clear-sky conditions. Furthermore, the Jacobian used in the estimation of Table 2 is referred to a standard tropical atmosphere, on the basis of the dataset of Anderson et al. (1986), which may differ from the real one.

4 Conclusion and future perspectives

In the measured spectral radiances, the signatures of the main climate variables can be identified, separated and used to assess climate model biases. This analysis cannot be carried out on the basis of intercomparisons of total OLR fluxes that,

as seen by the comparison of EC-Earth output and CERES observations, can easily hide compensating errors.

Thus, the availability of long-term measurements of spectrally resolved OLR radiances offers new, important perspectives to strictly evaluate GCM performance. Indeed, the spectra measured on a global scale represent a more accurate benchmark than that provided by reanalysis datasets, which are computed using both observations and model simulations. In addition, the spectral analysis is not affected by the systematic biases affecting atmospheric profiles retrieved from remote sensing measurements by applying a priori constraints to otherwise severely ill-conditioned inversions.

We implemented the σ -IASI RTM in the COSP package in order to perform online simulations of synthetic clear-sky spectra starting from the EC-Earth Global Climate Model profiles on a global scale, with a time step of 6 h for the period 2008–2016. Thus, we compared the EC-Earth-simulated spectral radiances to the IASI-measured radiances built from the Fundamental Climate Data Record (FCDR) of the reprocessed Metop-A Level 1c product on a frequency grid of 10 cm^{-1} . We limited the analysis to the clear-sky conditions identified by grid points where the observed (CERES) and simulated (EC-Earth) cloud fraction is smaller than 30 %. We found that such a small threshold limits the indirect effect of

Table 2. BT biases expected from the comparison between profiles of the climate model and ERA5 and observed in the comparison of climate model simulations and IASI observed climatologies.

Spectral interval centre (cm ⁻¹)	(660)	(700)	(730)	(850)	(1400)
Height region with temperature sensitivity (km)	(25–45)	(5–15) and (20–35)	(3–10)	(0–5)	(3–10)
Height region with water vapour sensitivity (km)	–	–	–	–	(5–20)
BT bias expected from ERA5 intercomp. (K)	+ 2.5	+ 0.8	– 0.2	– 0.2	+ 0.7
BT bias obtained from IASI intercomp. (K)	+ 3.5	+ 1.5	– 0.8	– 0.2	+ 0.5

clouds on radiation in the model. The comparison has been performed on a global scale, ensuring the spatial and temporal coincidence between the modelled and observed spectra. We focused on the daytime tropical ocean (30° S, 30° N) area, where the analysis is not affected by the uncertainties due to the land emissivity, and the discrepancies between observed and simulated radiances in the atmospheric window are close to zero.

The spectral analysis carried out in these conditions leads to the detection of the following EC-Earth model biases which, due to compensations, do not show up in the comparison of the total OLR fluxes:

- A strong (≈ 3.5 K) positive temperature bias in the stratosphere.
- A (≈ 1 K) negative temperature bias in the troposphere.
- A (≈ 0.5 K) positive bias in the BTs in the water vapour band, indicating an underestimation of the model water vapour in the upper troposphere.

Finally, we have shown that the results of our spectral analysis are generally consistent with those obtained by comparing EC-Earth temperature and specific humidity profiles to the ERA5 reanalysis. The largest discrepancy between the two intercomparisons is found in the stratospheric temperature bias, but the differences are still within 1 K.

The next phase of the work will also extend the analysis to spectral radiances in the presence of clouds, whose impact on the radiation represents the greatest source of uncertainty in climate models. The objective is to perform a spectral analysis of the cloud radiative effect and to inspect spectral model biases by comparing climate model outputs to observations in all-sky conditions. Finally, the same approach could be extended to other climate models, and in the near future, it will involve FORUM FIR measurements for a comprehensive analysis of the climate model ability in reproducing the whole Earth emission spectrum.

Appendix A: Brightness temperature and spectral OLR flux

The spectral radiance L_ν at wavenumber ν can be converted into brightness temperature (BT) by using the inverse of the

Planck function. Specifically, brightness temperature is defined as the temperature T_ν of the blackbody B_ν that emits the same radiance L_ν at wavenumber ν . Thus, we set the following:

$$L_\nu = B_\nu(T_\nu) = \frac{2h\nu^3 c^2}{e^{\frac{hc\nu}{kT_\nu}} - 1}, \quad (\text{A1})$$

where h is Planck's constant, c is the speed of light in vacuum, and k is Boltzmann's constant. Inverting this formula, we obtain the following:

$$T_\nu = \frac{hc\nu}{k \ln\left(1 + \frac{2hc^2\nu^3}{L_\nu}\right)}. \quad (\text{A2})$$

The spectral radiance is the energy flowing through the unit area, per unit of time, per unit wavenumber and solid angle. In general, the spectral radiance is not isotropic; it usually depends on the orientation of the considered solid angle. This orientation can be identified using the zenith and the azimuth angles θ and ϕ , respectively. Thus, the spectral radiance, in general, is a function $L_\nu(\theta, \phi)$. The spectral flux F_ν is defined as the integral of the radiance over a hemisphere of a solid angle, as follows:

$$F_\nu = \int_{\Omega} L_\nu(\theta, \phi) \cos(\theta) d\Omega, \quad (\text{A3})$$

where $d\Omega$ is the infinitesimal element of the solid angle Ω , the hemispheric domain of integration. In spherical coordinates, we obtain $d\Omega = \sin(\theta)d\theta d\phi$. Thus, the spectral flux F_ν is written as follows:

$$F_\nu = \int_0^{2\pi} d\phi \int_0^{\pi/2} d\theta L_\nu(\theta, \phi) \cos(\theta) \sin(\theta). \quad (\text{A4})$$

The total OLR flux is the integral of F_ν over the OLR spectral range, usually defined from 100 to 3333 cm⁻¹ (or from 3 to 100 μm in wavelength).

Code and data availability. Permission to access the EC-Earth3 source code can be requested from the EC-Earth community via the EC-Earth website (<http://www.ec-earth.org/>, EC-Earth Consortium, 2019) and may be granted if a corresponding software license agreement is signed with ECMWF.

The σ -IASI code is available on Zenodo (<https://doi.org/10.5281/zenodo.7019991>, Masiello et al., 2022).

IASI data can be downloaded from the EUMETSAT data centre (https://doi.org/10.15770/EUM_SEC_CLM_0014, EUMETSAT, 2018).

Scripts and model data used for the analysis are available on Zenodo at <https://doi.org/10.5281/zenodo.6912765> (Della Fera, 2022).

Supplement. The supplement related to this article is available online at: <https://doi.org/10.5194/gmd-16-1379-2023-supplement>.

Author contributions. SDF interfaced the σ -IASI radiative transfer model in the COSP package, with the help of FF, MR and JVH. SDF and FF configured the climate model simulation and post-processed the climate model data with the support of JVH. SDF developed the code to create the climatology of the IASI measurements, with the help of UC, PR, FB and MR. SDF drafted the paper, and all authors contributed to its final version.

Competing interests. The contact author has declared that none of the authors has any competing interests.

Disclaimer. Publisher's note: Copernicus Publications remains neutral with regard to jurisdictional claims in published maps and institutional affiliations.

Acknowledgements. The authors acknowledge CINECA, for providing computational resources through the Italian SuperComputing Resource Allocation (ISCR); projects ECECOSP and ECEIASI, and EUMETSAT for making available the huge amount of L1c IASI data through the European Weather Cloud service (EWC). The σ -IASI RTM was made available by its authors in the framework of the "FORUM-scienza" (FORUM science) project, funded by the Italian Space Agency in the 2019–2022 time frame.

Review statement. This paper was edited by Volker Grewe and reviewed by two anonymous referees.

References

- Amato, U., Masiello, G., Serio, C., and Viggiano, M.: The σ -IASI code for the calculation of infrared atmospheric radiance and its derivatives, *Environ. Modell. Softw.*, 17, 651–667, 2002.
- Anderson, G. P., Clough, S. A., Kneizys, F., Chetwynd, J. H., and Shettle, E. P.: AFGL atmospheric constituent profiles (0.120 km), Tech. rep., Air Force Geophysics Lab Hanscom AFB MA, <https://apps.dtic.mil/dtic/tr/fulltext/u2/a175173.pdf> (last access: 16 February 2023), 1986.
- Anderson, J. L., Balaji, V., Broccoli, A. J., Cooke, W. F., Delworth, T. L., Dixon, K. W., Donner, L. J., Dunne, K. A., Freidenreich, S. M., Garner, S. T., Gudgel, R. G., Gordon, C. T., Held, I. M., Hem-

- ler, R. S., Horowitz, L. W., Klein, S. A., Knutson, T. R., Kushner, P. J., Langenhost, A. R., Lau, N.-C., Liang, Z., Malyshev, S. L., Milly, P. C. D., Nath, M. J., Ploshay, J. J., Ramaswamy, V., Schwarzkopf, M. D., Shevliakova, E., Sirutis, J. J., Soden, B. J., Stern, W. F., Thompson, L. A., Wilson, R. J., Wittenberg, A. T., and Wyman, B. L.: The New GFDL Global Atmosphere and Land Model AM2–LM2: Evaluation with Prescribed SST Simulations, *J. Climate*, 17, 4641–4673, 2004.
- Balsamo, G., Beljaars, A., Scipal, K., Viterbo, P., van den Hurk, B., Hirschi, M., and Betts, A. K.: A revised hydrology for the ECMWF model: Verification from field site to terrestrial water storage and impact in the Integrated Forecast System, *J. Hydrometeorol.*, 10, 623–643, 2009.
- Barkstrom, B. R.: The earth radiation budget experiment (ERBE), *B. Am. Meteorol. Soc.*, 65, 1170–1185, 1984.
- Blumstein, D., Chalon, G., Carlier, T., Buil, C., Hebert, P., Maciaszek, T., Ponce, G., Phulpin, T., Tournier, B., Simeoni, D., Astruc, P., Clauss, A., Kayal, G., Jegou, R.: IASI instrument: Technical overview and measured performances, in: *Infrared Spaceborne Remote Sensing XII*, SPIE, 5543, 196–207, 2004.
- Bodas-Salcedo, A., Webb, M. J., Bony, S., Chepfer, H., Dufresne, J.-L., Klein, S. A., Zhang, Y., Marchand, R., Haynes, J. M., Pincus, R., and John, V. O.: COSP: Satellite simulation software for model assessment, *B. Am. Meteorol. Soc.*, 92, 1023–1043, 2011.
- Brindley, H. and Bantges, R.: The spectral signature of recent climate change, *Current Climate Change Reports*, 2, 112–126, 2016.
- Brindley, H., Bantges, R., Russell, J., Murray, J., Dancel, C., Bellotti, C., and Harries, J.: Spectral signatures of Earth's climate variability over 5 years from IASI, *J. Climate*, 28, 1649–1660, 2015.
- Brindley, H. E. and Harries, J. E.: The impact of far IR absorption on clear sky greenhouse forcing: sensitivity studies at high spectral resolution, *J. Quant. Spectrosc. Ra.*, 60, 151–180, 1998.
- Clerbaux, C., Boynard, A., Clarisse, L., George, M., Hadji-Lazaro, J., Herbin, H., Hurtmans, D., Pommier, M., Razavi, A., Turquety, S., Wespes, C., and Coheur, P.-F.: Monitoring of atmospheric composition using the thermal infrared IASI/MetOp sounder, *Atmos. Chem. Phys.*, 9, 6041–6054, <https://doi.org/10.5194/acp-9-6041-2009>, 2009.
- Cortesi, U., Del Bianco, S., Gai, M., Laurenza, L. M., Ceccherini, S., Carli, B., Barbara, F., and Buchwitz, M.: Sensitivity analysis and application of KLIMA algorithm to GOSAT and OCO validation, Technical, scientific and research reports, 6, 1–153, 2014.
- Del Bianco, S., Carli, B., Gai, M., Laurenza, L. M., and Cortesi, U.: XCO₂ retrieved from IASI using KLIMA algorithm, *Ann. Geophys.-Italy*, 56, 2013.
- Della Fera, S.: *ece_iasi_postprocessed_output*, Zenodo [data set], <https://doi.org/10.5281/zenodo.6912765>, 2022.
- Doelling, D. R., Sun, M., Nordeen, M. L., Haney, C. O., Keyes, D. F., and Mlynarczyk, P. E.: Advances in geostationary-derived longwave fluxes for the CERES synoptic (SYN1deg) product, *J. Atmos. Ocean. Technol.*, 33, 503–521, 2016.
- Döscher, R., Acosta, M., Alessandri, A., Anthoni, P., Arsouze, T., Bergman, T., Bernardello, R., Boussetta, S., Caron, L.-P., Carver, G., Castrillo, M., Catalano, F., Cvijanovic, I., Davini, P., Dekker, E., Doblas-Reyes, F. J., Docquier, D., Echevarria, P., Fladrich, U., Fuentes-Franco, R., Gröger, M., v. Hardenberg, J., Hieronymus, J., Karami, M. P., Keskinen, J.-P., Koenigk, T., Makkonen, R.,

- Massonnet, F., Ménégos, M., Miller, P. A., Moreno-Chamarro, E., Nieradzick, L., van Noije, T., Nolan, P., O'Donnell, D., Olinaho, P., van den Oord, G., Ortega, P., Prims, O. T., Ramos, A., Reerink, T., Rousset, C., Ruprich-Robert, Y., Le Sager, P., Schmith, T., Schrödner, R., Serva, F., Sicardi, V., Sloth Madsen, M., Smith, B., Tian, T., Tourigny, E., Uotila, P., Vancoppenolle, M., Wang, S., Wärilind, D., Willén, U., Wyser, K., Yang, S., Yepes-Arbós, X., and Zhang, Q.: The EC-Earth3 Earth system model for the Coupled Model Intercomparison Project 6, *Geosci. Model Dev.*, 15, 2973–3020, <https://doi.org/10.5194/gmd-15-2973-2022>, 2022.
- EC-Earth Consortium: EC-Earth – A European community Earth System Model, <http://eearth.org> (last access: 16 February 2023), 2019.
- Edwards, P. and Pawlak, D.: MetOp: The space segment for EUMETSAT's polar system, *ESA Bull.*, 102, 6–18, 2000.
- EUMETSAT: IASI Level 1C Climate Data Record Release 1 – Metop-A, European Organisation for the Exploitation of Meteorological Satellites, EUMETSAT [data set], https://doi.org/10.15770/EUM_SEC_CLM_0014, 2018.
- Eyring, V., Bony, S., Meehl, G. A., Senior, C. A., Stevens, B., Stouffer, R. J., and Taylor, K. E.: Overview of the Coupled Model Intercomparison Project Phase 6 (CMIP6) experimental design and organization, *Geosci. Model Dev.*, 9, 1937–1958, <https://doi.org/10.5194/gmd-9-1937-2016>, 2016.
- Fichefet, T. and Maqueda, M. M.: Sensitivity of a global sea ice model to the treatment of ice thermodynamics and dynamics, *J. Geophys. Res.-Oceans*, 102, 12609–12646, 1997.
- Fortuin, J. P. and Langematz, U.: Update on the global ozone climatology and on concurrent ozone and temperature trends, in: *Atmospheric Sensing and Modelling*, vol. 2311, 207–216, International Society for Optics and Photonics, <https://doi.org/10.1117/12.198578>, 1995.
- Grieco, G., Masiello, G., Matricardi, M., Serio, C., Summa, D., and Cuomo, V.: Demonstration and validation of the φ -IASI inversion scheme with NAST-I data, *Q. J. Roy. Meteor. Soc.*, 133, 217–232, 2007.
- Guidard, V., Fourrié, N., Brousseau, P., and Rabier, F.: Impact of IASI assimilation at global and convective scales and challenges for the assimilation of cloudy scenes, *Q. J. Roy. Meteor. Soc.*, 137, 1975–1987, 2011.
- Harries, J., Carli, B., Rizzi, R., Serio, C., Mlyneczek, M., Palchetti, L., Maestri, T., Brindley, H., and Masiello, G.: The far-infrared Earth, *Rev. Geophys.*, 46, RG4004, <https://doi.org/10.1029/2007RG000233>, 2008.
- Hazeleger, W., Severijns, C., Semmler, T., Ștefănescu, S., Yang, S., Wang, X., Wyser, K., Dutra, E., Baldasano, J. M., Bintanja, R., et al.: EC-Earth: a seamless earth-system prediction approach in action, *B. Am. Meteorol. Soc.*, 91, 1357–1364, 2010.
- Hersbach, H., Bell, B., Berrisford, P., Hirahara, S., Horányi, A., Muñoz-Sabater, J., Nicolas, J., Peubey, C., Radu, R., Schepers, D., et al.: The ERA5 global reanalysis, *Q. J. Roy. Meteor. Soc.*, 146, 1999–2049, 2020.
- Hourdin, F., Mauritsen, T., Gettelman, A., Golaz, J. C., Balaji, V., Duan, Q. Y., Folini, D., Ji, D. Y., Klocke, D., Qian, Y., Rauser, F., Rio, C., Tomassini, L., Watanabe, M., and Williamson, D.: The art and science of climate model tuning, *B. Am. Meteorol. Soc.*, 98, 589–602, 2017.
- Huang, X., Ramaswamy, V., and Schwarzkopf, M. D.: Quantification of the source of errors in AM2 simulated tropical clear-sky outgoing longwave radiation, *J. Geophys. Res.-Atmos.*, 111, D14107, <https://doi.org/10.1029/2005JD006576>, 2006.
- Huang, X., Yang, W., Loeb, N. G., and Ramaswamy, V.: Spectrally resolved fluxes derived from collocated AIRS and CERES measurements and their application in model evaluation: Clear sky over the tropical oceans, *J. Geophys. Res.-Atmos.*, 113, D09110, <https://doi.org/10.1029/2007JD009219>, 2008.
- Huang, Y., Ramaswamy, V., Huang, X., Fu, Q., and Bardeen, C.: A strict test in climate modeling with spectrally resolved radiances: GCM simulation versus AIRS observations, *Geophys. Res. Lett.*, 34, L24707, <https://doi.org/10.1029/2007GL031409>, 2007.
- Hurrell, J. W., Hack, J. J., Shea, D., Caron, J. M., and Rosinski, J.: A new sea surface temperature and sea ice boundary dataset for the Community Atmosphere Model, *J. Climate*, 21, 5145–5153, 2008.
- Kiehl, J. T. and Trenberth, K. E.: Earth's annual global mean energy budget, *B. Am. Meteorol. Soc.*, 78, 197–208, 1997.
- Le Marshall, J., Jung, J., Derber, J., Chahine, M., Treadon, R., Lord, S. J., Goldberg, M., Wolf, W., Liu, H. C., Joiner, J., Woollen, J., Todling, R., van Delst, P., and Tahara, Y.: Improving global analysis and forecasting with AIRS, *B. Am. Meteorol. Soc.*, 87, 891–894, 2006.
- Liuzzi, G., Masiello, G., Serio, C., Meloni, D., Di Biagio, C., and Formenti, P.: Consistency of dimensional distributions and refractive indices of desert dust measured over Lampedusa with IASI radiances, *Atmos. Meas. Tech.*, 10, 599–615, <https://doi.org/10.5194/amt-10-599-2017>, 2017.
- Loeb, N. G., Doelling, D. R., Wang, H., Su, W., Nguyen, C., Corbett, J. G., Liang, L., Mitrescu, C., Rose, F. G., and Kato, S.: Clouds and the earth's radiant energy system (CERES) energy balanced and filled (EBAF) top-of-atmosphere (TOA) edition-4.0 data product, *J. Climate*, 31, 895–918, 2018.
- Loeb, N. G., Rose, F. G., Kato, S., Rutan, D. A., Su, W., Wang, H., Doelling, D. R., Smith, W. L., and Gettelman, A.: Toward a consistent definition between satellite and model clear-sky radiative fluxes, *J. Climate*, 33, 61–75, 2020.
- Madec, G., Romain, B.-B., Pierre-Antoine, B., Clément, B., Diego, B., Daley, C., Jérôme, C., Emanuela, C., Andrew, C., Damiano, D., Christian, E., Simona, F., Tim, G., James, H., Doroteaciro, I., Dan, L., Claire, L., Tomas, L., Nicolas, M., Sébastien, M., Silvia, M., Julien, P., Clément, R., Dave, S., Andrea, S., and Martin, V.: NEMO ocean engine, Note du Pôle de modélisation de l'Institut Pierre-Simon Laplace No. 27, 386 pp., ISSN 1288-1619, 2016.
- Masiello, G., Serio, C., Liuzzi, G., Venafrà, S., Maestri, T., Martinazzo, M., Amato, U., and Grieco, G.: σ -IASI (2.2), Zenodo [code], <https://doi.org/10.5281/zenodo.7019991>, 2022.
- Mauritsen, T., Stevens, B., Roeckner, E., Crueger, T., Esch, M., Giorgetta, M., Haak, H., Jungclaus, J., Klocke, D., Matei, D., Mikolajewicz, U., Notz, D., Pincus, R., Schmidt, H., and Tomassini, L.: Tuning the climate of a global model, *J. Adv. Model. Earth Sy.*, 4, M00A01, <https://doi.org/10.1029/2012MS000154>, 2012.
- Meinshausen, M., Vogel, E., Nauels, A., Lorbacher, K., Meinshausen, N., Etheridge, D. M., Fraser, P. J., Montzka, S. A., Rayner, P. J., Trudinger, C. M., Krummel, P. B., Beyerle, U., Canadell, J. G., Daniel, J. S., Enting, I. G., Law, R. M., Lunder, C. R., O'Doherty, S., Prinn, R. G., Reimann, S., Rubino,

- M., Velders, G. J. M., Vollmer, M. K., Wang, R. H. J., and Weiss, R.: Historical greenhouse gas concentrations for climate modelling (CMIP6), *Geosci. Model Dev.*, 10, 2057–2116, <https://doi.org/10.5194/gmd-10-2057-2017>, 2017.
- Meinshausen, M., Nicholls, Z. R. J., Lewis, J., Gidden, M. J., Vogel, E., Freund, M., Beyerle, U., Gessner, C., Nauels, A., Bauer, N., Canadell, J. G., Daniel, J. S., John, A., Krummel, P. B., Luderer, G., Meinshausen, N., Montzka, S. A., Rayner, P. J., Reimann, S., Smith, S. J., van den Berg, M., Velders, G. J. M., Vollmer, M. K., and Wang, R. H. J.: The shared socioeconomic pathway (SSP) greenhouse gas concentrations and their extensions to 2500, *Geosci. Model Dev.*, 13, 3571–3605, <https://doi.org/10.5194/gmd-13-3571-2020>, 2020.
- Palchetti, L., Brindley, H., Bantges, R., Buehler, S. A., Camy-Peyret, C., Carli, B., Cortesi, U., Del Bianco, S., Di Natale, G., Dinelli, B. M., Feldman, D., Huang, X. L., C.-Labonnote, L., Li-bois, Q., Maestri, T., Mlynchak, M. G., Murray, J. E., Oetjen, H., Ridolfi, M., Riese, M., Russell, J., Saunders, R., and Serio, C.: Unique far-infrared satellite observations to better understand how Earth radiates energy to space, *B. Am. Meteorol. Soc.*, 101, E2030–E2046, 2020.
- Ridolfi, M., Del Bianco, S., Di Roma, A., Castelli, E., Belotti, C., Dandini, P., Di Natale, G., Dinelli, B. M., Labonnote, L. C., and Palchetti, L.: FORUM Earth Explorer 9: Characteristics of Level 2 Products and Synergies with IASI-NG, *Remote Sens.-Basel*, 12, 1496, <https://doi.org/10.3390/rs12091496>, 2020.
- Rodgers, C. D.: Inverse methods for atmospheric sounding: theory and practice, *Atmospheric, Oceanic and Planetary Physics*, edited by: World-Scientific, Singapore, London, 240 pp., 2000.
- Rodgers, C. D. and Connor, B. J.: Intercomparison of remote sounding instruments, *J. Geophys. Res.*, 108, 4116, <https://doi.org/10.1029/2002JD002299>, 2003.
- Serio, C., Masiello, G., Esposito, F., Di Girolamo, P., Di Iorio, T., Palchetti, L., Bianchini, G., Muscari, G., Pavese, G., Rizzi, R., Carli, B., and Cuomo, V.: Retrieval of foreign-broadened water vapor continuum coefficients from emitted spectral radiance in the H₂O rotational band from 240 to 590 cm⁻¹, *Opt. Express*, 16, 15816–15833, 2008.
- Sohn, B.-J., Schmetz, J., Stuhlmann, R., and Lee, J.-Y.: Dry bias in satellite-derived clear-sky water vapor and its contribution to longwave cloud radiative forcing, *J. Climate*, 19, 5570–5580, 2006.
- Susskind, J., Molnar, G., Iredell, L., and Loeb, N. G.: Interannual variability of outgoing longwave radiation as observed by AIRS and CERES, *J. Geophys. Res.-Atmos.*, 117, D23107, <https://doi.org/10.1029/2012JD017997>, 2012.
- Whitburn, S., Clarisse, L., Bauduin, S., George, M., Hurtmans, D., Safieddine, S., Coheur, P. F., and Clerbaux, C.: Spectrally resolved fluxes from IASI data: Retrieval algorithm for clear-sky measurements, *J. Climate*, 33, 6971–6988, 2020.
- Whitburn, S., Clarisse, L., Bouillon, M., Safieddine, S., George, M., Dewitte, S., De Longueville, H., Coheur, P.-F., and Clerbaux, C.: Trends in spectrally resolved outgoing longwave radiation from 10 years of satellite measurements, *npj climate and atmospheric science*, 4, 1–8, 2021.
- Wild, M.: The global energy balance as represented in CMIP6 climate models, *Clim. Dynam.*, 55, 553–577, 2020.