

Enhancing Robot-Environment Physical Interaction via Optimal Impedance Profiles

*Original*

Enhancing Robot-Environment Physical Interaction via Optimal Impedance Profiles / Averta, G.; Hogan, N.. - (2020), pp. 973-980. ( 8th IEEE RAS/EMBS International Conference for Biomedical Robotics and Biomechatronics, BioRob 2020 usa 2020) [10.1109/BioRob49111.2020.9224382].

*Availability:*

This version is available at: 11583/2970274 since: 2022-09-02T09:15:44Z

*Publisher:*

IEEE Computer Society

*Published*

DOI:10.1109/BioRob49111.2020.9224382

*Terms of use:*

This article is made available under terms and conditions as specified in the corresponding bibliographic description in the repository

*Publisher copyright*

IEEE postprint/Author's Accepted Manuscript

©2020 IEEE. Personal use of this material is permitted. Permission from IEEE must be obtained for all other uses, in any current or future media, including reprinting/republishing this material for advertising or promotional purposes, creating new collecting works, for resale or lists, or reuse of any copyrighted component of this work in other works.

(Article begins on next page)

# Enhancing Robot-Environment Physical Interaction via Optimal Impedance Profiles

Giuseppe Averta<sup>1,2,3</sup> and Neville Hogan<sup>4,5</sup>

**Abstract**—Physical interaction of robots with their environment is a challenging problem because of the exchanged forces. Hybrid position/force control schemes often exhibit problems during the contact phase, whereas impedance control appears to be more simple and reliable, especially when impedance is shaped to be energetically passive. Even if recent technologies enable shaping the impedance of a robot, how best to plan impedance parameters for task execution remains an open question. In this paper we present an optimization-based approach to plan not only the robot motion but also its desired end-effector mechanical impedance. We show how our methodology is able to take into account the transition from free motion to a contact condition, typical of physical interaction tasks. Results are presented for planar and three-dimensional open-chain manipulator arms. The compositionality of mechanical impedance is exploited to deal with kinematic redundancy and multi-arm manipulation.

## I. INTRODUCTION

Recent frontiers of robotics research have encountered a major obstacle in physical human-robot interaction. Contact with the environment requires fine control not only of robot position but also of the wrench exerted. The importance of this concern is even more pressing for applications in which robots are intended to interact physically with humans for working activities, for example with cobots, or for assistive applications, as is the case with exoskeletons, rehabilitative and perhaps companion robots (see [1], [2] for review).

Classical approaches, such as position control, typically fail to modulate force effectively, while force control is effective only during contact. For this reason, several studies focused on methodologies able to control in both domains. Proposed solutions to this problem can be categorized loosely into two broad classes: i) Active interaction control; ii) Passive interaction control. The first group is essentially a ‘hybrid’ combination of position and force control [3]. The reader may refer for example to [4], [5]. These approaches typically require end-effector force sensors for their implementation,

even if some techniques are available for estimating force [6]. Moreover, force control may result in unstable behavior during contact with external objects [7]. The second group, instead, implement energetically passive control of force which is not affected by typical force-control problems. Among the second group, one of the simplest effective strategies is impedance control [8]. The idea behind the impedance control, originally presented as a general control framework for manipulators in free or constrained motion, with and without dynamic interaction with the environment, is conceptually simple. The goal of the controller is to produce and maintain a desired impedance, i.e. force as a dynamic function of the deviation of position from its zero-force value. This concept appears to be effective since it manages contact with external objects in the environment without explicitly programming the transition between free motion and contact, yet preserves adequate tracking of a zero-force trajectory during free movements. Several applications have benefited from impedance control; the interested reader may refer for example to [9], [10], [11].

One characteristic of impedance control implementation is an increase in the number of parameters to be specified in the controller. That is, in addition to the zero-force trajectory, the designer is required to tune the robot stiffness, damping and (potentially) parameters related to higher-order derivatives (e.g. inertia). How best to modulate impedance parameters is still an open question. Typical implementations pre-tune these parameters depending on the specific task. It has been observed that high impedance values are desirable for fine movements, while lower values should be used for large/rapid movements [12], [13]. In [14], the authors propose a strategy to adapt robot impedance depending on the human’s behavior during a physical human-robot interaction task. Adaptive impedance control has been used to account for differences between model and manipulator parameters [15], [16]. In addition, the ability to adapt controller parameters may be used to improve system performance and has been proposed to optimize task efficiency [17], [18], [19].

In this paper, we build upon the state-of-the art and tackle the problem of planning the whole robot behavior in terms of both motion and impedance profiles. More specifically, we propose an optimization-based approach to modulate the Cartesian impedance of a generic manipulator, in terms of the desired stiffness and damping, together with the zero-force trajectory commanded to the controller. This would shape the manipulator overall behavior in a coherent and coordinated way. The results presented in this paper demonstrate that our implementation is able to cope with different kinematic structures and effectively exploit the properties of impedance

\* This project received funding from the European Union’s Horizon 2020 research and innovation programme under grant agreement Nos. 688857 (SoftPro), 810346 (Natural BionicS) and 871237 (Sophia). Additional support came from the U.S. National Science Foundation Grant Nos. 1637824, 1724135, and 1826097.

<sup>1</sup>Centro di Ricerca “Enrico Piaggio”, Università di Pisa, Largo Lucio Lazzarino 1, 56126 Pisa, Italy [giuseppe.averta@ing.unipi.it](mailto:giuseppe.averta@ing.unipi.it)

<sup>2</sup>Soft Robotics for Human Cooperation and Rehabilitation, Fondazione Istituto Italiano di Tecnologia, via Morego, 30, 16163 Genova, Italy

<sup>3</sup>Dipartimento di Ingegneria dell’Informazione, Università di Pisa, Largo Lucio Lazzarino 1, 56126 Pisa, Italy

<sup>4</sup>Department of Mechanical Engineering, Massachusetts Institute of Technology, Cambridge, MA, USA

<sup>5</sup>Department of Brain and Cognitive Sciences, Massachusetts Institute of Technology, Cambridge, MA, USA

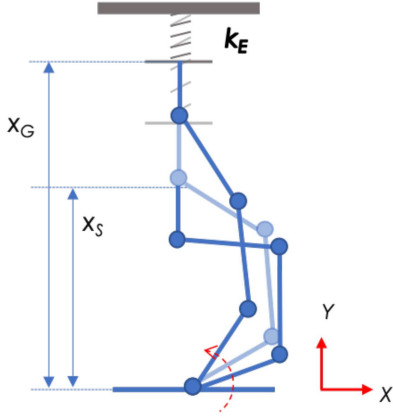


Fig. 1. Sample task for a single arm. The robot starts from an initial configuration  $x_S$  and moves to push against the spring to reach the goal position  $x_G$ . This task includes a transition from a free movement condition to an environment-interaction condition.

compositionality to manage robot redundancy. To demonstrate our approach, we present a series of simulation experiments, first with a simple planar structure, then generalizing to a multi-arm redundant three-dimensional robot. To test the effectiveness of our methodology, all tasks include a transition from free motion to contact with a compliant environment. Although an experimental validation remains to be conducted, the method described in this work develops an approach to plan the motion and impedance of a manipulator as a whole, and potentially provides a means to ensure safe and effective use of assistive and rehabilitative devices in daily life.

## II. BACKGROUND

The theory of impedance control is well established in the literature. This section reviews the main concepts necessary for the rest of this paper. As mentioned in the introduction, the general idea is to control the dynamic relation between the generalized configuration of a manipulator and the energy-dual generalized forces. Given a general operational space with  $p$  dimensions, we can define the robot generalized configuration  $x \in \mathbb{R}^p$ , its derivatives  $\dot{x}, \ddot{x}, \dots \in \mathbb{R}^p$ , and the output force/torque  $F \in \mathbb{R}^p$ . A common implementation of mechanical impedance is

$$F = Z(x, x_0, \dot{x}, \dot{x}_0, \ddot{x}, \ddot{x}_0, \dots), \quad (1)$$

where  $Z$  is an arbitrary non-linear operator and  $x_0, \dot{x}_0, \ddot{x}_0, \dots \in \mathbb{R}^p$  define the motions of the robot that yield zero force/torque,  $F = 0$ . One typical implementation is to assume a linear operator and truncate the derivatives at the first order, in such a way that the external perceived behavior is the effect of a spring and a damper. This results in the following linear controller [8]

$$F_I = -k(x - x_0) - b(\dot{x} - \dot{x}_0). \quad (2)$$

It is important to recognize that all forces/torques—whatever their origin—superimpose their effects on the inertial dynamics of a robot. As a result, multiple controllers defined in

the form of Eq. 2 may be combined linearly to increase the complexity of the behavior. That is, mechanical impedance has the property of compositionality.

So far we defined  $x$  as a generalized configuration variable but Eq. 2 can be defined in different spaces. For physical interaction, one may want to shape the impedance perceived at the robot end-effector. In that case, without any loss of generality, consider a manipulator with  $n$  revolute joints  $q = [q_1, \dots, q_n]^T$  and an end-effector moving in an  $m$ -dimensional Cartesian space which has  $\text{fk}(q)$  forward kinematics and a Jacobian matrix  $J(q) \in \mathbb{R}^{m,n}$  so that Eq. 2 may be rewritten as

$$\tau_I = J^T [-K_{EE}(\text{fk}(q) - x_0) - B_{EE}(J\dot{q} - \dot{x}_0)], \quad (3)$$

where  $K_{EE} \in \mathbb{R}^{m,m}$  and  $B_{EE} \in \mathbb{R}^{m,m}$  are the endpoint stiffness and damping matrices respectively,  $q \in \mathbb{R}^n$  is the vector of the joint angular values and  $x_0, \dot{x}_0 \in \mathbb{R}^m$  are the end-effector zero-force position and velocity.

This formulation enables control of the robot trajectory directly in Cartesian space, with a desired impedance also specified in Cartesian space. If endpoint stiffness is calculated at zero endpoint force, the map from endpoint impedance matrices to joint impedance matrices is straightforward:

$$K_q = J^T K_{EE} J \quad (4)$$

$$B_q = J^T B_{EE} J \quad (5)$$

Importantly, note that no kinematic inversion is required. For additional details on this topic, the interested reader is referred to [8], [3].

It is worth mentioning that the major goal of impedance control is to shape the interaction between the robot and the external environment rather than accurately control its motion. For this reason, in case of external forces, the actual motion of the robot will be different from the zero-force motion  $x_0, \dot{x}_0$ . Hereafter we will use the subscript  $_0$  to refer to the zero-force motion, and use the subscript  $_{goal}$  to refer to the desired motion. As previously stated, in the presence of external forces  $x_0 \neq x_{goal}$ . The difference between desired and zero-force motion will be used as an additional degree of freedom for the impedance optimization presented in the remainder of this paper.

### A. Redundant robots

In the case of robots with a more degrees of freedom than the dimension of Cartesian space, the impedance control implemented in Eq. 3 has a nullspace cardinality higher than zero. In other words, a desired Cartesian impedance can be achieved via a manifold of robot configurations. This may be an undesired effect, since a small perturbation may produce an arbitrarily large movement in the nullspace. To address this problem, one solution is to include a second impedance control which defines a configuration-space impedance with respect to a desired rest position. In this paper we implemented this concept at the joint level as:

$$\tau_J = -K_J(q - q_{rest}) - B_J\dot{q}, \quad (6)$$

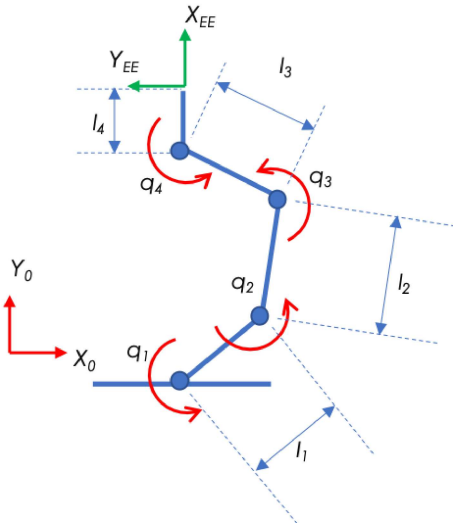


Fig. 2. Schematic model of the 4R planar manipulator used as first example.

where  $\tau_j$  are the joint torques required to control the robot configuration toward the rest position  $q_{rest}$  with stiffness and damping matrices  $K_J \in \mathbb{R}^{n,n}$  and  $B_J \in \mathbb{R}^{n,n}$  respectively.

Note that, since the rest configuration defined by the two controllers is different in general, their superimposition may produce a steady-state error at the end-effector with respect to the rest position of the Cartesian impedance control. This can be arbitrarily reduced by design if  $K_J \ll K_{EE}$ . Alternatively, zero error may be achieved via null-space projection [20], [21]. Yet another possibility is that the optimization (presented below) could adjust  $x_0$  to achieve zero steady-state error (that is  $x = x_{goal}$ ). Although we are aware that null-space projections could solve the issue in this case, other causes may also result in tracking errors (e.g. imperfect gravity compensation). In this work, we decided to follow the latter approach to show the potential of optimization to compensate for disturbances that may result in tracking error.

### III. IMPEDANCE OPTIMIZATION

In Sec. II we discussed the stiffness and damping matrices as coefficients of the controller. Typical implementations use fixed parameters selected through heuristic strategies. However, as mentioned in the introduction, having the possibility to modulate the controller parameters during task execution may be a major advantage for robot physical interaction, yet how to shape time-dependent impedance profiles is still an open question. In the following we propose a solution to this problem by presenting a novel approach to jointly optimize the impedance parameters and reference profiles for a given (arbitrary) robot interacting with its environment.

#### A. Interaction modeling

Modeling physical contact with an external object is a complex topic. However, in many applications it is sufficient to schematize it as a force experience at the contact point. A typical approach to simulating contact with a compliant

object is to calculate such a force/torque as the reaction of a spring pushed by the robot against a fixed reference. We will refer to this model in the following through the parameter  $k_E$ , which relates the strain in the contact with the corresponding exchanged force. The model can be formalized as  $W_{ext} = k_E \varepsilon$ , where the strain  $\varepsilon$  is calculate as the difference  $\varepsilon = x - x_{rest}$  between the endpoint position and the rest configuration of the spring (all defined in the same reference frame). Note that the particular model of the external environment that we assumed is neither mandatory nor a limitation of this work, since it is only used to simulate a sample task and any other model would require similar computational cost. The general experiment considered in this work is depicted in Fig. 1.

#### B. Robot definition

To show the theory behind our implementation clearly, we build this paper starting from a simple basic building block, a planar 4R manipulator (see Fig. 2). This keeps the initial complexity low, yet preserves the general goal and the essential challenges as well as the consequences of robot redundancy. Later in this paper, the complexity of the model will be increased, moving toward bi-manual 4R structures and fully humanoid structures. The motion of the manipulator is simulated by integrating a dynamic model of the serial links through the Robotics Toolbox [22], which can be formalized as in the following:

$$M(q)\ddot{q} + c(q, \dot{q}) = \tau_I + \tau_J$$

where the term related to the gravity is assumed to be compensated by a gravity compensation controller,  $M(q)$  is the inertia matrix of the manipulator and  $c(q, \dot{q})$  takes into account Coriolis and centripetal forces.

#### C. Cost function

Since mechanical impedance is a relation between force and motion, it is important to include in the objective function to be minimized at least one term related to force and one related to robot motion at the same point. The reason to do this is also practical. A penalty on end-effector position is needed to follow a desired path, while minimizing end-effector force is useful for several practical purposes, including increased safety while interacting with humans or the environment, lower power consumption, etc. [23]. The general form of the scalar objective function can be written as:

$$\zeta = \alpha_1 \|x - x_{goal}\| + \alpha_2 \|x^{fin} - x_{goal}^{fin}\| + \alpha_3 \|W_{ext}\|, \quad (7)$$

where  $x$  is the time-varying configuration of the end-effector,  $x_{goal}$  is a desired reference (virtual) trajectory,  $x^{fin}$  and  $x_{goal}^{fin}$  are the end-effector position and target at the end of the action,  $W_{ext}$  is the external wrench exerted on the end-effector.  $\alpha_1$ ,  $\alpha_2$  and  $\alpha_3 \in \mathbb{R}^+$  are task-dependent constants with proper units, and  $\|\bullet\|$  is the norm operator. Note that the first and third terms quantify the tracking error and external wrench along the whole trajectory. The particular selection of  $\alpha_1$ ,  $\alpha_2$  and  $\alpha_3$  will affect the shape of the optimization problem and, hence, the final solution to which

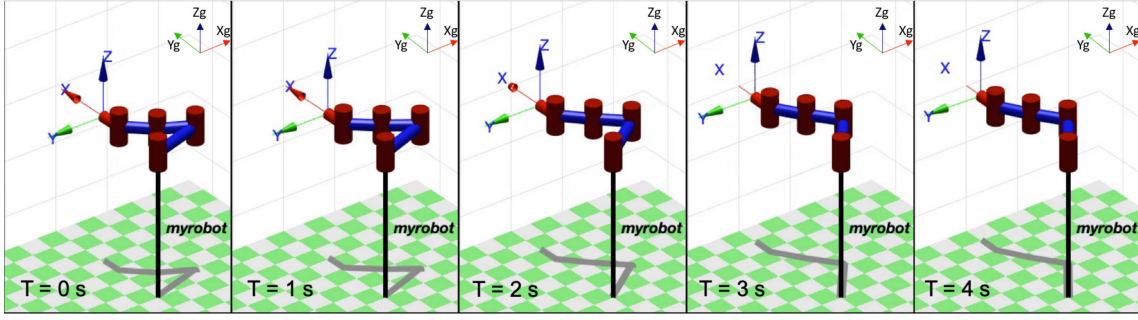


Fig. 3. Snapshots of the optimal robot behavior detailed in Fig. 4. Visualization was performed using the Robotic Toolbox [22]

the algorithm will converge. Using higher values for  $\alpha_1$  and  $\alpha_2$  will provide more precise path following, at the expense of higher interaction-forces; vice-versa, a larger value of  $\alpha_3$  will result in a reduction of  $W_{ext}$  up to the point of preventing a satisfactory path following of robot endpoint. It is hence clear that the particular selection of relative weights of cost function terms is a critical point that deserves particular care, also considering task specific conditions.

Given the cost function in Eq. 7, the optimization problem can be formalized as:

$$\begin{aligned}
 & \min_{K_{EE}, B_{EE}, x_{ref}} \zeta \\
 & \text{s. t.} \\
 & \zeta = \alpha_1 \|x - x_{goal}\| + \alpha_2 \|x^{fin} - x_{goal}^{fin}\| + \alpha_3 \|W_{ext}\| \\
 & l_{k_{i,j}} \leq k_{i,j} \leq u_{k_{i,j}} \forall i, j = 1, \dots, m, \\
 & l_{b_{i,j}} \leq b_{i,j} \leq u_{b_{i,j}} \forall i, j = 1, \dots, m \\
 & l_{x_{ref,i}} \leq x_{ref,i} \leq u_{x_{ref,i}} \forall i = 1, \dots, m \\
 & M(q)\ddot{q} + c(q, \dot{q}) = \\
 & J^T W_{ext} + \tau_J + J^T [-K_{EE}(x - x_0) - B_{EE}(J\dot{q} - \dot{x}_0)]
 \end{aligned} \tag{8}$$

where  $K_{EE}^*$ ,  $B_{EE}^*$  and  $x_{ref}^*$  are the optimal parameters for the impedance control of Eq. 3,  $k_{i,j}$ ,  $b_{i,j}$  are the  $i, j$  entries of  $K_{EE}$ ,  $B_{EE}$ , and  $l_{k_{i,j}}$ ,  $u_{k_{i,j}}$ ,  $l_{b_{i,j}}$ ,  $u_{b_{i,j}}$ ,  $l_{x_{ref,i}}$ ,  $u_{x_{ref,i}}$  are the lower- and upper- bounds for stiffness, damping and controller reference configuration in task space respectively. The optimal values  $K_{EE}^*$ ,  $B_{EE}^*$  are shaped to be diagonal, while lower bounds are set to zero to guarantee that matrices are always positive definite.

The problem of Eq. 8 is in general non-convex. However, a good approximation can be achieved with a reasonable selection of an initial guess. In our case we heuristically selected constant values for  $K_{EE}$  and  $B_{EE}$ , while the initial guess for  $x_0$  was a minimum-jerk trajectory between the initial and final desired positions. This choice of trajectory was inspired by human movements (see e.g. [24], [25]), and is typically used to generate continuous, smooth movements in robotics [17], [26]. Let  $x_1$  and  $x_N$  be the initial and final goal positions of the robot end-effector; the minimum jerk trajectory between  $x_1$  and  $x_N$  is calculated as

$$x(t) = x_1 + (x_N - x_1) * (10(t/t_N)^3 - 15(t/t_N)^4 + 6*(t/t_N)^6) \tag{9}$$

#### D. Problem complexity and generalization to parallel robots

The optimization problem formulated in Eq. 8 is written in a general form and is valid both for planar and for 3D structures. The main difference between these two conditions is the dimensionality of  $K_{EE}^*$ ,  $B_{EE}^*$  and  $x_0^*$ . For the planar case the end-effector is defined in  $m = 3$  dimensions, while for the general case  $m = 6$ . This results in an increased computational time, but the formulation of the problem is still valid. For this reason, we will present results on a planar robot first, and on a 3D humanoid robot later. To optimize the whole robot motion, each optimization variable is defined for a series of time frames, i.e.  $K_{EE} \in \mathbb{R}^{m \times m \times T}$ ,  $B_{EE} \in \mathbb{R}^{m \times m \times T}$  and  $x_0 \in \mathbb{R}^{m \times T}$ , where  $T$  is the number of time knot-points (or via-points) considered. Note that the greatest contribution to computational complexity does not arise from the dimensionality of the robot's configuration space or its end-effector workspace but rather from the number of time knot-points considered in the optimization.

To reduce complexity we defined a set of six evenly spaced knot-points and optimized the controller parameters at these points. The impedance and reference profiles were then interpolated using a piece-wise cubic polynomial. Specifically, between two adjacent knots the function was approximated by a cubic Hermite polynomial with a constraint on the derivatives at the knots. The resulting profile is guaranteed to be continuous with a continuous first derivative, while the interpolation error at the knots is zero. Interpolation via piece-wise cubic Hermite polynomials is shape preserving. This results in interpolated stiffness and reference profiles that preserve the shape of the optimized data, respect monotonicity and maintain local minima/maxima. Note that, even if the approximation of motion and impedance profiles by piece-wise cubic Hermite polynomials produces continuous variation, this does not imply continuous dynamics; interaction with the external environment may introduce discontinuities in the robot's actual motion. For additional details on the implementation we refer to [27], [28].

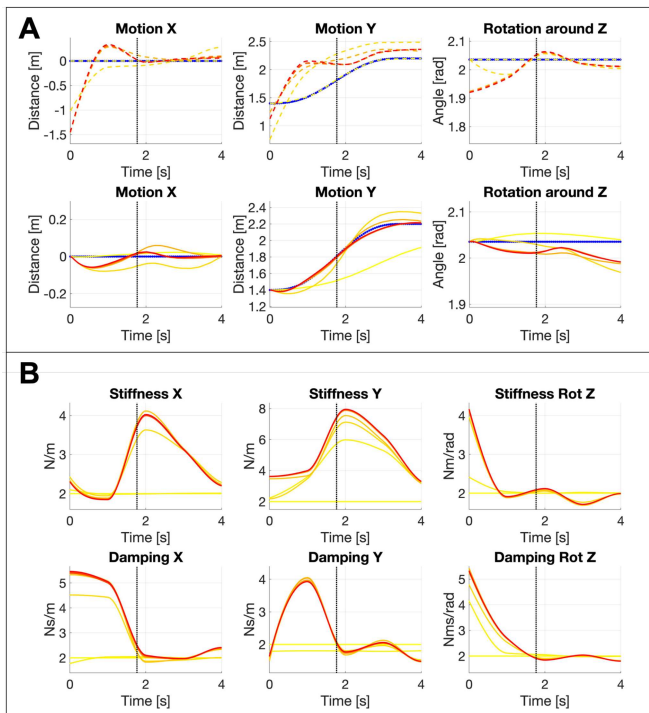


Fig. 4. Optimization of impedance control parameters. All the quantities reported in this Figure are expressed in global coordinates (see Fig.3). **Sub-figure A.** On the first row: in blue the reference trajectory, from the yellow to the red dashed line (along the color gradient) the commanded trajectory given to the impedance control, while increasing number of iterations. Red plots are the final optimal values. On the second row: in blue the reference trajectory, from the yellow to the red filled line (along the color gradient) the actual robot movement. Red plots are the final optimal values. Vertical black dotted lines identify the time at which contact occurs for the optimal case. **Sub-figure B.** On the first row: From the yellow to the red filled line (along the color gradient), stiffness profile along X and Y axis and around Z axis (rotation), while increasing number of iterations. Red plots are the final optimal values. On the second row: From the yellow to the red filled line (along the color gradient), damping profile along X and Y axis and around Z axis (rotation), while increasing number of iterations. Red plots are the final optimal values. Vertical black dotted lines identify the time at which contact occurs for the optimal case.

#### IV. RESULTS

The impedance optimization algorithm discussed in Section III was implemented and tested on several kinematic structures. To show the effectiveness of our approach we present a set of simulations performed on a 4R planar robot (see Fig. 2). In this implementation, the objective function introduced in Eq. 8 was minimized via an Interior Point Algorithm. For each iteration, the algorithm simulated the robot motion using an updated set of parameters. The end-effector goal trajectory of Eq. 7 was a minimum jerk trajectory between an initial configuration in free space and a final configuration that was within the simulated object, thus in a configuration where  $W_{ext} > 0$  (See Fig. 1). The initial guess for the optimization parameters were constant stiffness and damping and a minimum-jerk trajectory between initial and final configuration (the same as the goal trajectory). Weighting coefficients for the cost function were selected as  $\alpha_1 = 100$ ,  $\alpha_2 = 1$  and  $\alpha_3 = 5$ . Results are depicted in Fig. 4.

The algorithm was able to identify a solution that locally minimized  $\zeta$  in a small number of iterations (fewer than 40 for the 4R case). For each iteration, the time-varying profiles for the impedance control parameters were updated, until the minimum was approximated with suitable precision (step size less than  $10^{-15}$ ). It is interesting that, without any constraint on the shapes of the impedance profiles and reference trajectory, the calculated optimal solution found impedance variations that would increase the stiffness in proximity of the impact, while maintaining good tracking of the reference trajectory and avoiding overshoot. In addition, since the task space has three dimensions while the robot has four revolute joints, we can expect undesired movements of the manipulator in the nullspace of the controller. As discussed in Sec. II-A, we solve this problem using a secondary joint-space impedance controller. The parameters of this second controller were not optimized and its reference position was a constant rest configuration. Note that, even though the two controllers have different target behaviors and hence compete, the overall behavior was not affected because the optimization was able to learn the effect of the second controller on the end-effector behavior and compensate for it by commanding a modified zero-force motion to the Cartesian impedance controller, while still preserving its contribution at the joint level. This effect can be observed in Fig. 4-A. Indeed, before contact (black vertical line), one would expect a commanded trajectory (yellow-to-red lines) close to the goal trajectory (blue line), as for typical impedance control. Here, instead, the optimal solution results with a modulation of the commanded trajectory also in case of no external forces, as a compensation for the undesired Cartesian effects of  $\tau_J$  and, potentially, of other sources of steady-state errors (as, for example, inexact gravity compensation).

##### A. Extension to parallel robots

Since the procedure presented in this work is focused on the end-effector behavior, it is, from a theoretical point of view, straightforward to extend it to more complex structures. In this section, we generalize to multi-arm manipulation. Let us consider two identical robots, the first placed in a configuration resembling a right arm and the second in a left-arm configuration. The choice to use two identical manipulators was only made for convenience and is not a limitation of this work, as the only required condition is that both arms are able to move along the optimized trajectory. The task in this case is depicted in Fig. 6.

The problem formalized in Sec. III can be easily extended here with the same computational complexity. Indeed, since the optimization is designed to shape the end-effector behavior, the control of each of the two manipulators can be straightforwardly mapped as a rigid transform of the optimum behavior in the coordinates of the paired manipulators. The final robot behavior is depicted in Fig. 5. In this case, the algorithm was able to find a solution that satisfied all the task requirements.

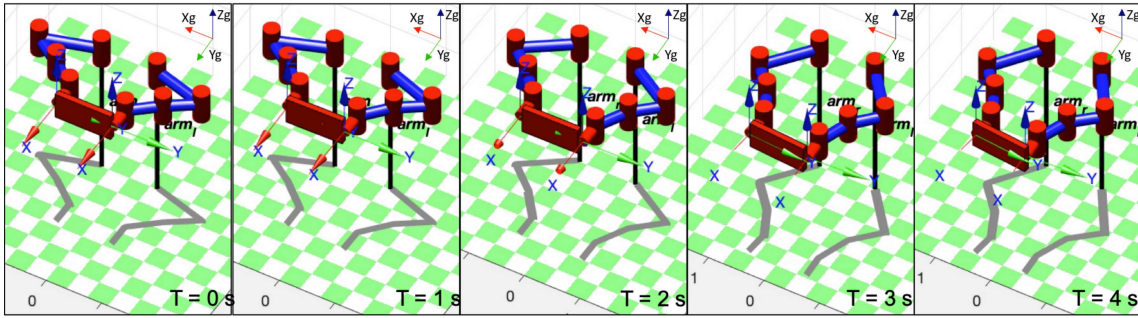


Fig. 5. Snapshots of the optimal bi-manual robot behavior. Visualization was performed using the Robotic Toolbox [22]

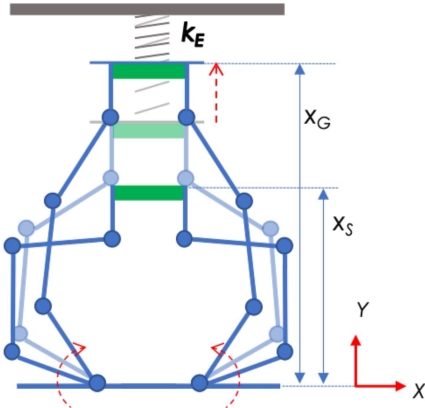


Fig. 6. Sample task for the dual-arm robot. The robot started from the initial configuration  $x_S$  and pushed against the spring to reach the goal position  $x_G$ . The dual-arm robot end-effector was defined as the mean between the single arms end-effectors. This task included a transition from a free movement condition to an environment-interaction condition.

### B. Generalization to 3D robots

In the previous sections, we discussed the application of impedance optimization to planar robots. The extension to non-planar manipulators comes with no additional theoretical complexity, and all of the framework developed in Sec. II and III is still valid. Nevertheless, from a computational point of view, the extension to 3D robots introduces non-negligible challenges, and may require excessive computation time. However, leveraging the compositionality of impedance, our implementation was still able to provide a solution in a reasonable time. We report here a set of experiments carried out on a model of a 14 degree-of-freedom Baxter Robot. In this case, the task was the same as Fig. 6 with two 7 degree-of-freedom arms moving in a 6 degree-of-freedom Cartesian space. The initial guess for the optimization parameters was constant stiffness and damping and a minimum-jerk trajectory between initial and final configuration (the same as the goal trajectory). Weighting coefficients for the cost function were selected as  $\alpha_1 = 100$ ,  $\alpha_2 = 10$  and  $\alpha_3 = 3.5$ . The optimal robot behavior (iteration 71) is reported in Fig. 8, while the resulting impedance profile and reference trajectory are presented in Fig. 7. As in the previous case, the optimization was able to provide a desired behavior at the end-effector while the kinematic redundancy was handled through

additional joint-space impedance controllers. As may be seen in Fig. 7, the goal trajectory (blue line) was implemented by the manipulator endpoint with high fidelity, resulting in a maximum average linear deviation from the goal trajectory equal to 6mm (worst case along the X direction, up to a total motion of the manipulator along X equal to 52cm). As in the previous cases, the optimization has i) learned the effect of the joint impedance controller at the endpoint and ii) planned a counter-action to maintain a good trajectory tracking while preserving the effect of  $\tau_j$  at the joint level.

## V. DISCUSSION AND CONCLUSIONS

This paper presented an optimization-based algorithm that is able to identify an optimal end-effector impedance profile for a generic task of interaction with an external compliant body. This implementation provides a coordinated, coherent and independent planning of robot dynamic behavior in Cartesian space, in terms of apparent stiffness and damping, together with the end-effector desired trajectory. Although it is common to impose a relationship between stiffness and damping, for instance to get critically damped systems (see [19] among others), in this work we decided to optimise the three parameters independently. In this way, the optimal solution was free to implement under-damped or over-damped conditions in specific portions of the motion, for example to increase velocity.

This task-oriented approach comes with several advantages, since it enables i) a clear interpretation of the results and ii) generalization to different kinematic structures. The results, derived from extensive simulations, with multiple kinematic configurations and considering both single- and multi-robot manipulation, show that this approach is effective and reliable.

We reduced computational complexity through the selection of a limited number of via-points. Controller parameter values at these points were optimized by the planner and then used as knot-points of an interpolating spline. The number of knot-points is one of the task-dependent parameters of the optimization. For example, a larger number may be required to approximate fast movements. For this reason, we are also testing the use of other methods of dimensionality reduction, for example exploiting an incremental enrollment of functional Principal Components extracted from human movements, which has already been profitably exploited in

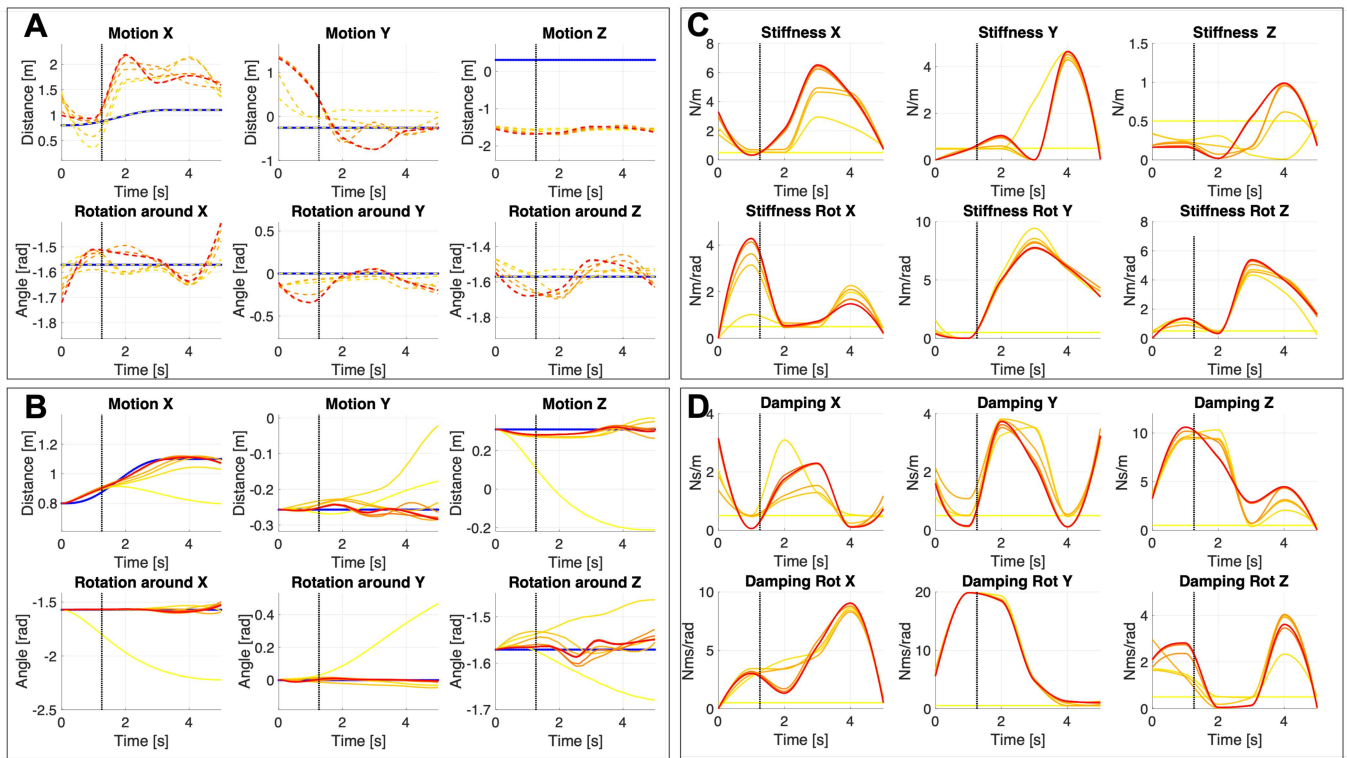


Fig. 7. Optimization of impedance control parameters for the 7 degree-of-freedom case. All the quantities reported in this Figure are expressed in global coordinates (see Fig.8). **Sub-figure A.** In blue the reference (goal) trajectory, from the yellow to the red dashed line (along the color gradient) the commanded trajectory given to the impedance control, while increasing number of iterations. Red plots are the final optimal values. Vertical black dotted lines identify the time at which contact occurs for the optimal case. **Sub-figure B.** In blue the reference (goal) trajectory, from the yellow to the red filled line (along the color gradient) the actual robot movement, while increasing number of iterations. Red plots are the final optimal values. Vertical black dotted lines identify the time at which contact occurs for the optimal case. **Sub-figure C.** From the yellow to the red filled line (along the color gradient) stiffness profile, while increasing number of iterations. Red plots are the final optimal values. Vertical black dotted lines identify the time at which contact occurs for the optimal case. **Sub-figure D.** From the yellow to the red filled line (along the color gradient) damping profile, while increasing number of iterations. Red plots are the final optimal values. Vertical black dotted lines identify the time at which contact occurs for the optimal case.

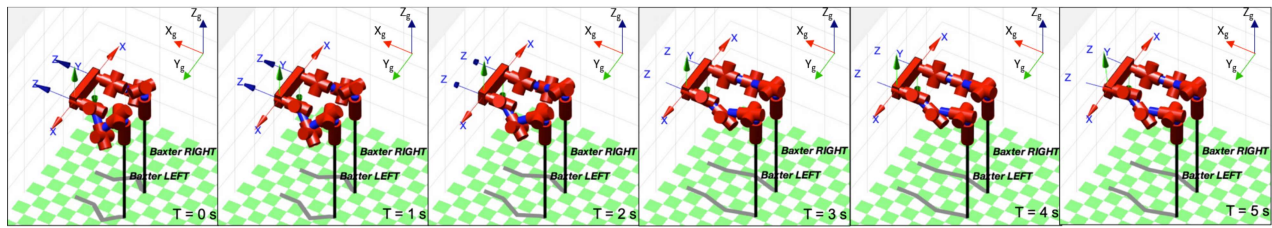


Fig. 8. Snapshot of the optimal behavior implemented on a Baxter bi-manual robot. Visualization was performed using the Robotic Toolbox [22].

human-like motion planning [29], [30]. The idea is to identify, from a dataset of human examples, a basis set of functional Principal Components, ordered by decreasing dataset variance explained. A weighted combination of these components can be used to accurately reconstruct an arbitrary time-domain signal. Exploiting the hierarchy imposed by the explained variance – in which some components are ‘more important’ than others – an algorithm can generate an approximation of the desired time-series with a limited number of functional Principal Components. In this case, the optimization is free to modulate the weighting coefficients of these functions rather their value at each time point. The hierarchy embedded

in the definition of functional Principal Components has the additional benefit that a recursive algorithm can search for the solution in a low dimensional space with the option to increase the number of independent functional Principal Components in the optimization (hence augmenting the cardinality of the optimization state) when the problem is not solved with a desired accuracy [31].

Future work will also implement this algorithm on real platforms. Particular effort will be devoted to improvement of the optimization routine in terms of computation time, to enable on-line implementation. The use of Machine Learning techniques is currently under evaluation to infer impedance

and trajectory profiles for an unknown case, leveraging on a set of previously solved examples [32], [33].

The implementation presented in this paper does not guarantee convergence to the global minimum. However, the particular selection of the optimization method is a free parameter of the problem. Indeed, the same approach can be implemented with global optimization algorithms, such as Genetic Algorithms, Multi-Search approaches or, leveraging on the particular bi-linear formulation of the cost function, with specific optimization algorithms [34]. However, we anticipate that those approaches may incur a significant expansion of the time required to converge. For this reason, whether it is worth searching for the global optimum, or instead accepting a local solution that can be identified in a reduced amount of time, remains an open question to be addressed in future developments of this work.

## REFERENCES

- [1] P. Maciejasz, J. Eschweiler, K. Gerlach-Hahn, A. Jansen-Troy, and S. Leonhardt, "A survey on robotic devices for upper limb rehabilitation," *Journal of neuroengineering and rehabilitation*, vol. 11, no. 1, p. 3, 2014.
- [2] H. S. Lo and S. Q. Xie, "Exoskeleton robots for upper-limb rehabilitation: State of the art and future prospects," *Medical engineering & physics*, vol. 34, no. 3, pp. 261–268, 2012.
- [3] L. Villani and J. De Schutter, "Force control," *Springer handbook of robotics*, pp. 161–185, 2008.
- [4] C. Schindlbeck and S. Haddadin, "Unified passivity-based cartesian force/impedance control for rigid and flexible joint robots via task-energy tanks," in *2015 IEEE international conference on robotics and automation (ICRA)*. IEEE, 2015, pp. 440–447.
- [5] T. Yoshikawa and X.-Z. Zheng, "Coordinated dynamic hybrid position/force control for multiple robot manipulators handling one constrained object," *The International Journal of Robotics Research*, vol. 12, no. 3, pp. 219–230, 1993.
- [6] A. De Luca, A. Albu-Schäffer, S. Haddadin, and G. Hirzinger, "Collision detection and safe reaction with the dlr-iii lightweight manipulator arm," in *2006 IEEE/RSJ International Conference on Intelligent Robots and Systems*. IEEE, 2006, pp. 1623–1630.
- [7] V. Ortenzi, R. Stolkin, J. Kuo, and M. Mistry, "Hybrid motion/force control: a review," *Advanced Robotics*, vol. 31, no. 19–20, pp. 1102–1113, 2017.
- [8] N. Hogan, "Impedance control—an approach to manipulation. i-theory. ii-implementation. iii-applications," *ASME Transactions Journal of Dynamic Systems and Measurement Control B*, vol. 107, pp. 1–24, 1985.
- [9] A. Ajoudani, N. Tsagarakis, and A. Bicchi, "Tele-impedance: Teleoperation with impedance regulation using a body-machine interface," *The International Journal of Robotics Research*, vol. 31, no. 13, pp. 1642–1656, 2012.
- [10] A. Albu-Schäffer, C. Ott, and G. Hirzinger, "A unified passivity-based control framework for position, torque and impedance control of flexible joint robots," *The international journal of robotics research*, vol. 26, no. 1, pp. 23–39, 2007.
- [11] H.-C. Lin, J. Smith, K. K. Babarhamati, N. Dehio, and M. Mistry, "A projected inverse dynamics approach for multi-arm cartesian impedance control," in *2018 IEEE International Conference on Robotics and Automation (ICRA)*. IEEE, 2018, pp. 1–5.
- [12] A. Lecours, B. Mayer-St-Onge, and C. Gosselin, "Variable admittance control of a four-degree-of-freedom intelligent assist device," in *2012 IEEE International Conference on Robotics and Automation*. IEEE, 2012, pp. 3903–3908.
- [13] V. Duchaine, B. M. St-Onge, D. Gao, and C. Gosselin, "Stable and intuitive control of an intelligent assist device," *IEEE Transactions on Haptics*, vol. 5, no. 2, pp. 148–159, 2012.
- [14] F. Ficuciello, L. Villani, and B. Siciliano, "Variable impedance control of redundant manipulators for intuitive human-robot physical interaction," *IEEE Transactions on Robotics*, vol. 31, no. 4, pp. 850–863, 2015.
- [15] R. Kelly, R. Carelli, M. Amestegui, and R. Ortega, "On adaptive impedance control of robot manipulators," in *Proceedings, 1989 International Conference on Robotics and Automation*. IEEE, 1989, pp. 572–577.
- [16] R. Colbaugh, H. Seraji, and K. Glass, "Direct adaptive impedance control of robot manipulators," *Journal of Robotic Systems*, vol. 10, no. 2, pp. 217–248, 1993.
- [17] J. Buchli, F. Stulp, E. Theodorou, and S. Schaal, "Learning variable impedance control," *The International Journal of Robotics Research*, vol. 30, no. 7, pp. 820–833, 2011.
- [18] C. Gabellieri, A. Palleschi, A. Mannucci, M. Pierallini, E. Stefanini, M. G. Catalano, D. Caporale, A. Settini, T. Stoyanov, M. Magnusson *et al.*, "Towards an autonomous unwrapping system for intralogistics," *IEEE Robotics and Automation Letters*, 2019.
- [19] F. Angelini, G. Xin, W. J. Wolfslag, C. Tiseo, M. Mistry, M. Garabini, A. Bicchi, and S. Vijayakumar, "Online optimal impedance planning for legged robots," in *IEEE International Conference on Intelligent Robots and Systems*, 2019.
- [20] O. Khatib, "A unified approach for motion and force control of robot manipulators: The operational space formulation," *IEEE Journal on Robotics and Automation*, vol. 3, no. 1, pp. 43–53, 1987.
- [21] A. Dietrich, C. Ott, and A. Albu-Schäffer, "An overview of null space projections for redundant, torque-controlled robots," *The International Journal of Robotics Research*, vol. 34, no. 11, pp. 1385–1400, 2015.
- [22] P. Corke, *Robotics, vision and control: fundamental algorithms In MATLAB® second, completely revised*. Springer, 2017, vol. 118.
- [23] S. Haddadin, A. Albu-Schäffer, and G. Hirzinger, "Safe physical human-robot interaction: measurements, analysis and new insights," in *Robotics research*. Springer, 2010, pp. 395–407.
- [24] T. Flash, "The control of hand equilibrium trajectories in multi-joint arm movements," *Biological cybernetics*, vol. 57, no. 4–5, pp. 257–274, 1987.
- [25] A. Piazzi and A. Visioli, "Global minimum-jerk trajectory planning of robot manipulators," *IEEE transactions on industrial electronics*, vol. 47, no. 1, pp. 140–149, 2000.
- [26] M. Zefran, V. Kumar, and C. B. Croke, "On the generation of smooth three-dimensional rigid body motions," *IEEE Transactions on Robotics and Automation*, vol. 14, no. 4, pp. 576–589, 1998.
- [27] R. E. Carlson and F. N. Fritsch, "Monotone piecewise bicubic interpolation," *SIAM journal on numerical analysis*, vol. 22, no. 2, pp. 386–400, 1985.
- [28] D. Kahaner, C. Moler, and S. Nash, "Numerical methods and software," *Englewood Cliffs: Prentice Hall*, 1989, 1989.
- [29] G. Averta, C. Della Santina, G. Valenza, M. Bianchi, and A. Bicchi, "Exploiting upper-limb functional synergies for human-like motion generation of anthropomorphic robots," *Journal of NeuroEngineering and Rehabilitation*.
- [30] G. Averta, D. Caporale, C. Della Santina, A. Bicchi, and M. Bianchi, "A technical framework for human-like motion generation with autonomous anthropomorphic redundant manipulators," in *Robotics and Automation (ICRA), 2020 IEEE International Conference on*, 2020.
- [31] G. Averta, F. Angelini, M. Bonilla, M. Bianchi, and A. Bicchi, "Incrementality and hierarchies in the enrollment of multiple synergies for grasp planning," *IEEE Robotics and Automation Letters*, vol. 3, no. 3, pp. 2686–2693, 2018.
- [32] J. F. Queißer, B. Hammer, H. Ishihara, M. Asada, and J. J. Steil, "Skill memories for parameterized dynamic action primitives on the pneumatically driven humanoid robot child affetto," in *2018 Joint IEEE 8th International Conference on Development and Learning and Epigenetic Robotics (ICDL-EpiRob)*. IEEE, 2018, pp. 39–45.
- [33] G. M. Gasparri, S. Manara, D. Caporale, G. Averta, M. Bonilla, H. Marino, M. Catalano, G. Grioli, M. Bianchi, A. Bicchi *et al.*, "Efficient walking gait generation via principal component representation of optimal trajectories: application to a planar biped robot with elastic joints," *IEEE Robotics and Automation Letters*, vol. 3, no. 3, pp. 2299–2306, 2018.
- [34] I. Quesada and I. E. Grossmann, "A global optimization algorithm for linear fractional and bilinear programs," *Journal of Global Optimization*, vol. 6, no. 1, pp. 39–76, 1995.