

Towards a FOSS Automatic Classification of Defects for Bridges Structural Health Monitoring

*Original*

Towards a FOSS Automatic Classification of Defects for Bridges Structural Health Monitoring / Belcore, E.; Di Pietra, V.; Grasso, N.; Piras, M.; Tondolo, F.; Savino, P.; Polania, D. R.; Osello, A.. - ELETTRONICO. - 1507:(2022), pp. 298-312. (ASITA 2021: Geomatics and Geospatial Technologies) [10.1007/978-3-030-94426-1\_22].

*Availability:*

This version is available at: 11583/2955236 since: 2023-09-20T13:34:34Z

*Publisher:*

Springer

*Published*

DOI:10.1007/978-3-030-94426-1\_22

*Terms of use:*



This article is made available under terms and conditions as specified in the corresponding bibliographic description in the repository

*Publisher copyright*

(Article begins on next page)



# Towards a FOSS Automatic Classification of Defects for Bridges Structural Health Monitoring

Elena Belcore<sup>1</sup> , Vincenzo Di Pietra<sup>1</sup> , Nives Grasso<sup>1</sup> , Marco Piras<sup>1</sup> ,  
Francesco Tondolo<sup>2</sup> , Pierclaudio Savino<sup>2</sup> , Daniel Rodriguez Polania<sup>2</sup>,  
and Anna Osello<sup>2</sup> 

<sup>1</sup> Department of Environmental, Land and Infrastructure Engineering (DIATI),  
Politecnico di Torino, C.so Duca degli Abruzzi 24, 10129 Turin, Italy  
{elena.belcore, vincenzo.dipietra, nives.grasso,  
marco.piras}@polito.it

<sup>2</sup> Department of Structural, Geotechnical and Building Engineering (DISEG),  
Politecnico di Torino, C.so Duca degli Abruzzi 24, 10129 Turin, Italy  
{francesco.tondolo, pierclaudio.savino,  
s258085}@studenti.polito.it, anna.osello@polito.it

**Abstract.** Bridges are among the most important structures of any road network. During their service life, they are subject to deterioration which may reduce their safety and functionality. The detection of bridge damage is necessary for proper maintenance activities. To date, assessing the health status of the bridge and all its elements is carried out by identifying a series of data obtained from visual inspections, which allows the mapping of the deterioration situation of the work and its conservation status. There are, however, situations where visual inspection may be difficult or impossible, especially in critical areas of bridges, such as the ceiling and corners. In this contribution, the authors acquire images using a prototype drone with a low-cost camera mounted upward over the body of the drone. The proposed solution was tested on a bridge in the city of Turin (Italy). The captured data was processed via photogrammetric process using the open-source Micmac solution. Subsequently, a procedure was developed with FOSS tools for the segmentation of the orthophoto of the intrados of the bridge and the automatic classification of some defects found on the analyzed structure. The paper describes the adopted approach showing the effectiveness of the proposed methodology.

**Keywords:** Bridge defect detection · Unmanned aerial vehicles (UAV) · FOSS · Machine learning · Random forest · OBIA · Photogrammetry · MicMac

## 1 Introduction

The management of existing bridges is a widespread problem throughout the world. In Italy and many other countries, bridges are nearing the end of their useful life and show

significant deterioration conditions. During its life cycle, each infrastructure will face deterioration depending on several factors such as the natural aging, the execution of works, the material quality, the planned maintenance, and the environmental condition. In recent years, many Italian bridges have been affected by severe failures or collapses that have caused significant economic and human lives losses. The main defects are related to phenomena of cracking, spalling and delamination, which significantly shorten the useful life of the bridge and make it more fragile against the traffic on wheels with a consequent increase of safety-related risks.

The current situation would require in-depth analyses to be carried out on all infrastructures in order to assess the actual level of safety, according to current regulations, and to take appropriate measures. It is a costly procedure in terms of time and money and the number of infrastructures on which it should be applied is very high, about one million bridges and viaducts just in Italy. Many of these are of mixed competence, about 30 thousand are managed by local authorities with reduced financial capacity, and as many as 1,425 viaducts are without an identified owner and manager [1]. The strategic approach suggested by the decision-making bodies is defining and developing simple and efficient methods for assessing the structural risk associated with infrastructures throughout the national territory. These assessments must be carried out following the classification and identification of deterioration and damage.

To this end, Superior Council of Public Works of the Ministry of Infrastructure and Transport has issued the “Guidelines for the Classification and Risk Management, Safety Assessment and Monitoring of Existing Bridges” [2]. They are intended to provide a procedure for managing the safety of existing bridges in order to prevent inadequate levels of damage by making the risk acceptable. One of the various aspects described by the guidelines is the classification of risk by identifying defects following a visual inspection. The guidelines explain how to identify these issues through photographic identification, measurement and geometric survey. This lends itself to automation as it is a well-structured methodology.

This automation has started with the advent of computer vision and machine-learning techniques, which provides effective tools for automatic analysis and detection of defects in bridge pictures. Image enhancement, morphological operators, object segmentation algorithms have been used on images for several years [3–5]. With the technological development of imaging sensors and the increased amount of data acquired, machine-learning techniques [6–8] and artificial neural networks [9, 10] have become of great interest in this field.

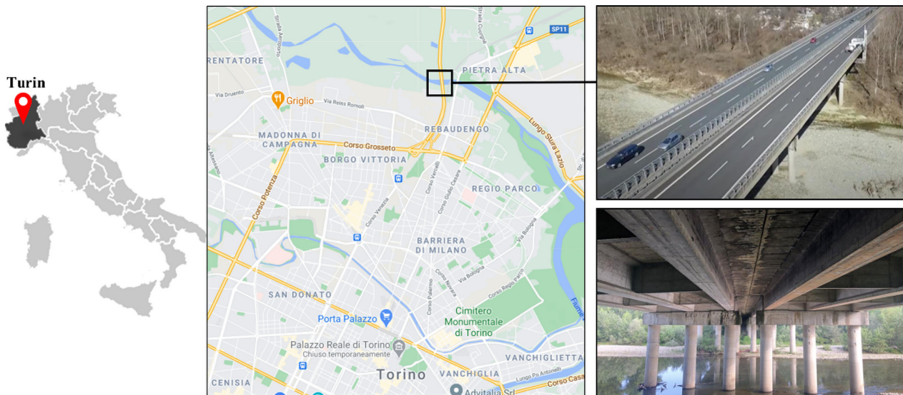
A further step forward has been the spread of remotely piloted aircraft, which allowed georeferenced images of large parts of the infrastructure to be acquired. In the specific case of bridges, these are generally complicated structures to detect due to limited access to the structure itself. This often means increased risk for the operators involved in the inspection procedures, as well as the need to stop traffic, which increases costs. The use of drones could be a solution to these problems and could also provide an effective tool for cost saving with respect to traditional techniques [11]. Unmanned Aerial Vehicles (UAV) have already been used in bridge inspection and also developed in order to acquire those non-conventional data [12, 13] for documentation. In this scenario, photogrammetric techniques are effective tools to perform more in-depth analyses: i.e. georeferencing,

measuring and quantifying defects in bridges. In fact, digital photogrammetry provides three-dimensional models and metrically accurate solid orthophotos, which could be used as a rich dataset for machine learning classification techniques [14].

This work aims to automate the procedure by means of geomatic and machine-learning techniques for the identification and automatic classification of structural defects in bridges. A UAV was modified for carrying a low-cost camera facing upward in order to acquire images of the intrados of a bridge. The automatic identification of the defects was made through a semiautomatic object-oriented (OBIA) supervised machine learning classification. The input data used as training sets were an orthoimage and a digital surface model results of the photogrammetric processing. All the steps of the work were made by means of free and open-source software (FOSS).

## 2 Case Study

The procedure proposed in this contribution was tested on the Stura bridge. The Stura river is crossed by this 150 m length double bridge, located on the motorway connection RA10, which allows the communication between Turin and the international airport Sandro Pertini (Fig. 1). The Stura Bridge is realized with two separated structures, one next to the other, each one of them corresponding to a direction of travel and 11 m wide. Each structure has five spans of variable lengths formed by a three main pre-stressed concrete girder beams system and complemented with squared sections transversal beams.

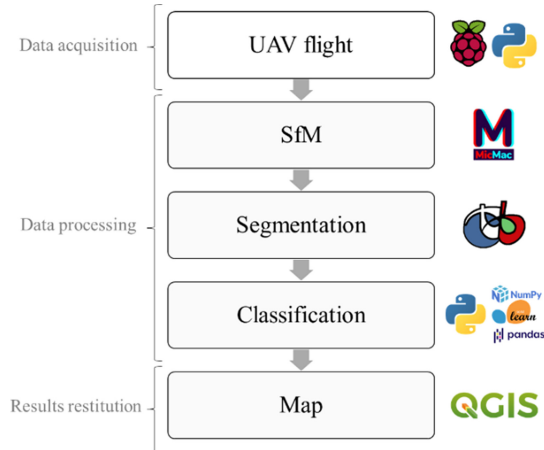


**Fig. 1.** Location of the Stura bridge on the RA10, its top and bottom view.

Given its strategic importance, the Stura bridge has been subject to various monitoring activities in recent years. Regardless of the nature of the inspection technique, monitoring the bridge's intrados is arduous because most of its length crosses the Stura river, and therefore it is hard to reach. This is especially true for geomatics approaches, which rely on different instruments. To this purpose, a novelty procedure for realising a photogrammetric survey with an upward camera installed on a UAV and the automatic classification of the defects was realized and applied on the second span of the bridge, 35 m long and 22 m wide.

### 3 The Methodology

The methodology consists of three macro-steps: data acquisition, data processing and the visual restitution of the results. It was entirely realized using FOSS (Fig. 2).

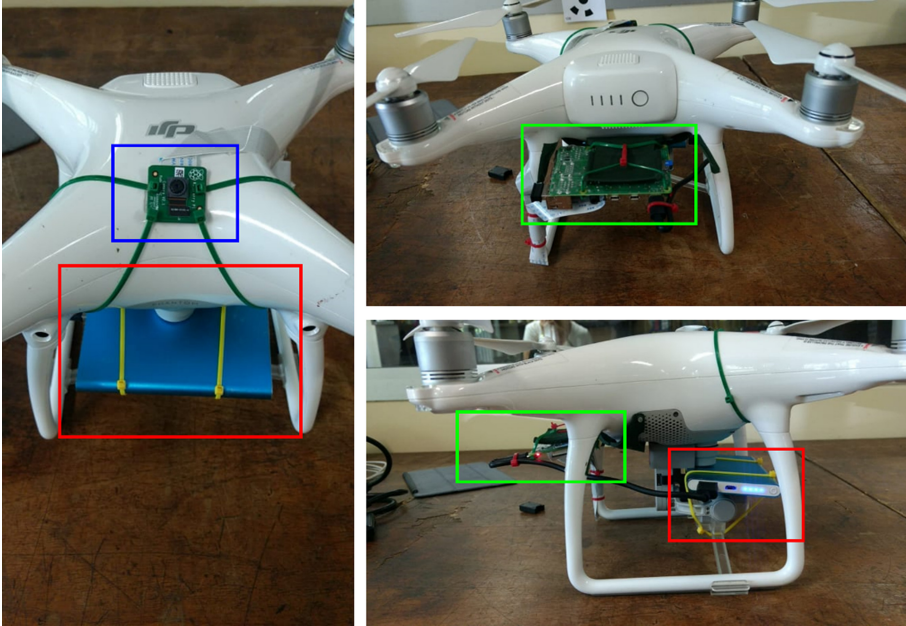


**Fig. 2.** FOSS workflow for the detection of structural damages.

#### 3.1 Data Acquisition

The input data used in this work for the automatic classification of the structural defects of the bridge was the orthophoto of its intrados. The realization of this product required a novelty approach, which involved the use of an upward camera installed on a UAV platform. Typically, the commercial UAV solution integrates a camera gimbal that can be oriented at an angle of  $90^\circ$ , from zenith to nadiral view. In some cases, where it is necessary to inspect particular structures that cannot be observed and analysed effectively with other instruments, such as the intrados of a bridge, the possibility of exploiting an upward tilt can be decisive.

For the survey, a common *Dji Phantom 4* aircraft was used. The quadrotor has a flight autonomy of about 20 min and a maximum upward orientation of the camera of  $30^\circ$ , which is insufficient for the complete photogrammetric reconstruction of the intrados. For this purpose, the UAV was equipped with a *Raspberry Pi Camera Module 2* connected and managed by a *Raspberry Pi (RPi) 3* system (Fig. 3). The advantage of this solution is the limited cost (<60 euro), their light weight and their simplicity to be used and embedded. Moreover, the RPi system can be exploited to control and process data collected from other sensors, such as inertial platforms and GNSS receivers, in order to perform the direct photogrammetry, where environmental conditions allow it [15].



**Fig. 3.** The photogrammetric system integration composed of the Raspberry Pi Camera Module V2 (in green), the Raspberry Pi 3 (in blue) and the power-bank (in red). (Color figure online)

A power-bank with 5000 mAh capacity was connected to the RPi, guaranteeing the autonomy of about 7 h. The devices were fixed with some cable ties to the camera gimble clamp of the drone and a support for a particular optical sensor (not used in this study) so as not to unbalance the platform. The total weight of the devices and the mounting components amounted to about 220 g. The RPi RGB camera module was installed upwards on the UAV to capture images with an orientation of  $45^\circ$  with respect to the zenith view. This camera sensor has an 8 MP resolution, but, for this study, a video recording at a lower resolution was set ( $1029 \times 702$  pixel) in order to automatically acquire images with a higher frame rate (2 fps) and ensure sufficient overlap between consecutive frames. To this purpose, a specific application in Python was developed to set the images acquisition with RPi camera and to store them automatically on an SD card inside the RPi. The application can be launched before the start of the flight. Due to the lack of GNSS signal, the flight was manually performed. In order to cover the entire study area, a flight path, at a distance of about five meters from the intrados, was followed, consisting of five survey lines corresponding to the spans of the bridge, each travelled in both directions. Table 1 summarizes the flight plan parameters and the characteristics of the acquired data.

**Table 1.** Flight plan parameters

Number of images	498
Flying altitude	5.29 m
Ground resolution	6.6 mm/pix
Image resolution	1024 × 720

As the external orientation of the images was unknown, external markers and photogrammetric points, easily identifiable on the images, were used as Ground Control Points (GCPs) to reference the model and to predict its accuracy. Therefore, the first step of the survey involved the construction of a topographic network composed of six vertices. Two vertices, identifying the primary network, were surveyed through a GNSS Leica GS-18 double frequency and multi-constellation receiver in static modality, standing on each point for about 1 h. The coordinates have been estimated considering a single-base solution (through the Leica Geo Office® software v.8.4) with the Torino permanent station of CORSs (Continuous Operating Reference Stations) network by Piedmont district, with an accuracy of about 3 mm.

Starting from this reference network, it was possible to acquire the position of four other points materialized on the ground under the bridge using a Leica MS-50 total station and a prism. The position of three artificial markers and of ten photogrammetric points spread on the intrados was measured from the station points of the topographic network and adjusted with the MicroSurvey StarNet v.7.0 software in order to obtain the final coordinates: the root mean square (RMS) of the estimated coordinates was lower than 1 cm.

## 4 Data Processing

The data processing regards the reconstruction of the orthophoto of the bridge's intrados and the supervised machine learning classification of the damages of the structure.

### 4.1 Photogrammetric Data Processing

Photogrammetric processing allows reconstructing of different scenarios from a set of images acquired from different points of view in the form of 3D digital model and ortho-imagery of the surveyed area. In order to maintain the FOSS approach, the free open-source photogrammetric suite MicMac (Multi-Images Correspondances, Methodes Automatiques de Correlation) from the French National Geographic Institute (IGN) [16, 17] has been used. The first step of the point cloud reconstruction is the identification of relevant features visible in multiple images, which is performed with the well-known SIFT algorithm [18]. Thanks to these common features, the position of the camera centre and the calibration parameters are computed. The MicMac libraries use the Structure from Motion procedure in order to accurately reconstruct the scene, generating the dense point cloud from which the digital elevation model (DEM) and the orthomosaic map

are extracted. All these steps are applied by running sequentially five libraries: Tapico, Tapas, Malt, Nuage2Ply and Tawny. During the process, some known reference points measured with a Total Station has been used to scale and georeference the model (GPSBascule tool). An optimization procedure which minimizes the coordinate errors is performed by Campari tool and the overall discrepancies between the reference coordinates and the estimated ones are reported in Table 2. From this procedure a DEM with resolution of 2.5 cm and an orthophoto with resolution of 0.6 cm have been extracted.

**Table 2.** Overall RMSE of the photogrammetric points on the intrados measured with the total station.

RMSE East	RMSE North	RMSE Up
7.27 mm	3.38 mm	5.68 mm

## 4.2 Damage Classification

The damages were identified through a semiautomatic object-oriented (OBIA) supervised machine learning classification.

In the Very High Resolution (VHR) image classification realm, the OBIA approach dominance is undiscussed. Ontologically, OBIA allows the identification and extraction of real-world features more accurately than pixel-based solutions and reliably from remotely sensed data only on more appropriate scales [19].

The OBIA classification is generally organized in six steps [20]:

- a. Segmentation;
- b. Features extraction and data preparation;
- c. Training and validation datasets generation;
- d. Classification algorithm;
- e. Feature selection;
- f. Validation of the classification.

The segmentation is the core process of OBIA, and several steps generally characterize it. Starting with individual pixels, OBIA algorithms merge contiguous pixels into groups (i.e., objects) based on three parameters: scale, shape, and compactness [20–22]. The objects should represent the classification features of interest (i.e. structural damages and non-damaged areas) [19]. The scale represents the degree of spectral heterogeneity allowed in each object. Generally, the higher the scale value (that is unitless), and larger the object will be because it is more heterogeneous [19, 22]. The compactness can be defined as the degree of similarity of a polygon to a circumference. The compactness parameter optimizes the resulting objects regarding the compactness.

The segmentation was realised on three-dimensional information of visible spectral information imagery using ORFEO toolbox [23], an open-source library for remote sensing application. The ORFEO project was funded in 2006 by the French space agency and it has rapidly evolved into a reliable toolbox for remote sensing practitioners. The OTB Large-Scale Mean-Shift segmentation workflow (LSMS) was applied [24]. First, the Red-Green-Blue image was smoothed with a range radius of 10 and a spatial radius of 2. Then the smoothed dataset was segmented using LSMS segmentation algorithm, with 2 as spatial radius and 5 as range radius. The LSMS Small region merging algorithm allowed the merging the smallest segments by setting the minimum segment size (i.e. 100). Finally, the segmentation was vectorised using the LSMS vectorization algorithm.

Effective use of features as input data for a classification procedure can improve classification accuracy [20, 25, 26]. Thus, the classification dataset was enriched with derivative features, namely, spectral-, textural-, and statistical-based features. The extraction of features was based on the literature classification research [27–32] and the authors' personal experience. Since the OBIA approach allows the analyst to introduce into the classification model features regarding the segmented objects' geometric characteristics and their relationship with the neighbourhood's objects, the shape, the extent and the compactness of the segments were computed too. 156 features were computed for each object. Table 3 reports the used measures for segmentation and classification. For each segment were computed the mean, the standard deviation, the median, the variance, the skewness and the kurtosis of spectral, histogram and textural features of Table 3.



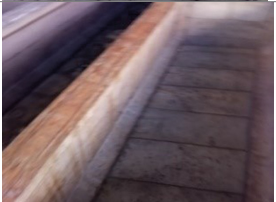
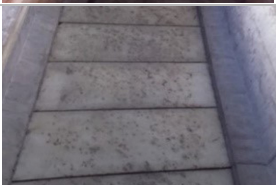

Five classes describe the existing damages over the study area: Drainage; uncovered metal bar (UMB); Oxidized rebar (OR); Non-damaged intrados; and Non-damaged beam (Table 4). For each class were visually identified 100 segments to be used as training and test (70% training – 30% test). Reaching 100 samples was not always possible since some classes are more frequent (in terms of area coverage) than others, and some other classes, although covering large areas, are spectrally homogeneous and thus described by large segments. This lead to small and unbalanced training datasets that can negatively affect the classification results. Thus, the training dataset was oversampled in Python environment. The oversampling [34] creates synthetic samples by interpolation of the feature values of the nearest neighbours. The Synthetic Minority Oversampling Technique (SMOTE) was applied considering the 6 nearest neighbour samples ( $n$ ) to reach the largest available class (100 samples of *Drainage*). The final training dataset was composed of 500 samples. Then, data were scaled according to each feature minimum-maximum values.

The classification was performed in Python environment using Pandas, NumPy and Sklearn libraries. Random Forest classification [35] model was trained using the smoted dataset. One-thousand trees with Gini criterion for the node splitting were used. The Random Forest algorithm can compute the Gini gain of each feature [36]. A simplified description of the GINI gain defines it as the sum of impurity decreases from two nodes and the parent node. The GINI is calculated for each variable of the classifier. This parameter is a proxy of the importance of each feature within the model: the variables that have high GINI gain (so they have less impurity) are more important. Features that have GINI importance less than the median values of the feature importance values were excluded from the classification.

**Table 3.** Features selected for the classification input dataset. They were computed using ORFEO toolbox.

Category	Features
Spectral-based	Color Index
Statistical-based Over the GREEN band In $5 \times 5$ neighbourhood	Variance
	Mean
	Skewness
	Kurtosis
Grey level co-occurrence matrix measures Over the GREEN band In $5 \times 5$ neighbourhood [33]	Mean
	Variance
	Dissimilarity
	Sum Average
	Sum Variance
	Sum Entropy
	Difference of Entropies
	Difference of Variances
	Image Correlation 1
	Image Correlation 2
	Energy
	Entropy
	Correlation
	Inverse Difference Moment
	Inertia
Cluster Shade	
Cluster Prominence	
Haralick Correlation	
Elevation	Digital Elevation Model
Geometric	Extension (Number of Pixels)
	Flat
	Roundness
	Longness
	Perimeter

**Table 4.** Classes of the model.

Class	Description	
Drainage	Area of the bridge that have evidence of present, or past, drainage	
Uncovered metal bar (UMB)	Metal bars of the beam that are not covered by concrete rebar	
Oxidized rebar (OR)	The concrete covering the bars with a evident oxidation process going on, thus, potentially evolving in Uncovered metal bars	
Non-damaged intrados	No evidence of damages	
Non-damaged beams	No evidence of damages	

The classification model was assessed using cross-validation approach. The cross-validation splits the test dataset in  $k$  folds of equal size and test the  $k$ -model on each fold. Since the test dataset is small (i.e. only 30 samples per class), the Leave-One-Out cross-validation (LOOCV) algorithm was applied [37, 38]. The LOOCV is a  $k$ -fold method where the number of folds is equal to the number of test samples. Thus, each fold's has only one test sample. In the case of correct classification, the fold validation is 1, and it is 0 in the case of wrong classified test samples. The assessment of the results is the mean of the assessment measures calculated on each fold. The precision, the Recall, and the F1-score were computed. It is important mentioning that the SMOTE was applied inside the LOOCV cycle.

## 5 Results and Discussion

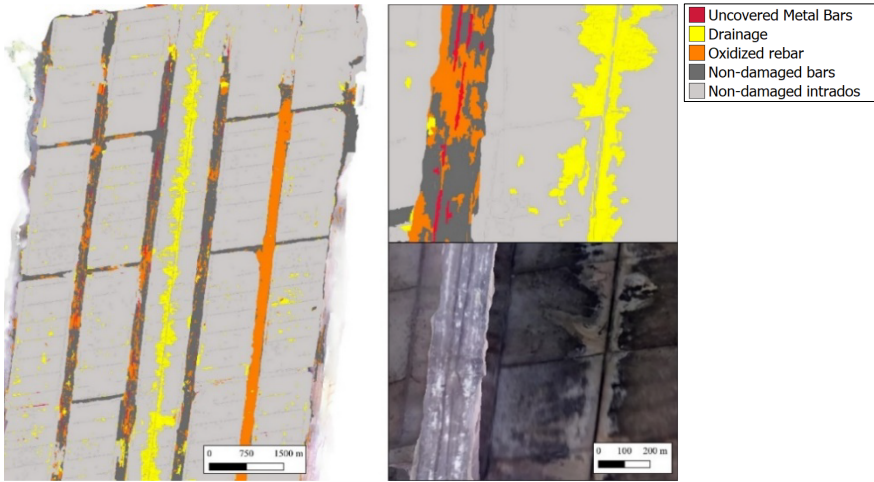
The segmentation resulted in 8068 segments characterised by 156 feature each. Figure 4 provides the visual restitution of the classification. The feature selection reduces the input classification variables from 156 to 74 without losing in accuracy. Indeed the overall accuracy of the model moved from 0.816 (without feature selection) to 0.819 (with feature selection). Table 5 reports the F1-score, Precision and Recall values of each class.

**Table 5.** Accuracy metrics calculated with LOOCV.

Metric	Uncovered metal bar (UMB)	Drainage	Oxidized rebar (OR)	Non-damaged intrados	Non-damaged beam
F1-score	0.846	0.938	0.602	0.770	0.792
Precision	0.860	0.929	0.676	0.731	0.776
Recall	0.831	0.948	0.543	0.814	0.809

The classification is well-performant in almost all the classes. Indeed, the F1-score is never below 0.750, except for the Oxidized rebar class. The latter provides the lowest accuracy; the F1-score is only 0.602. This aspect is quite interesting since there should be a clear difference over the Red band of the orthophoto. Nevertheless, within the damages classification, OR class less affects the infrastructure's stability. Precision and recall measures mirror the F1-score and are quite well balanced. The Recall value of class OR relates to a high false-negative rate. The non-damaged areas class shows opposite behaviour with respect to OR. The Recall is high, indicating a low number of false positive, but the precision is relatively low relating to high false positive.

It should be noted that in the specific case of the bridge intrados, the final result of the classification could be influenced by environmental lighting conditions. The limited illumination that characterizes this area of the infrastructure, influences both the reconstruction of the photogrammetric block and therefore the accuracy of the final model, as well as the radiometric values of the orthophoto, causing a loss of accuracy in the result of the classification procedure.



**Fig. 4.** Result of the classification.

## 6 Conclusion

This study has proposed an automatic approach for the detection of bridge defects as support for managing the safety of existing bridges in order to prevent inadequate levels of damage. The approach is intended to follow the directives of the Italian Ministry of Infrastructure and Transport, expressed in the “Guidelines for the Classification and Risk Management, Safety Assessment and Monitoring of Existing Bridges”. Nevertheless, the procedure can be extended for defect classification of bridges worldwide. In particular, the intent of this work is to check the potential of FOSS-focused unconventional photogrammetry for the classification of infrastructures’ damages. A commercial UAV has been modified with a low-cost imaging sensor managed by an opensource environment to acquire images of the intrados of a bridge. Those images have been processed in an open-source photogrammetric suite to extract an orthomosaic map and a digital surface model. Again, open source libraries for remote sensing image processing has been used to perform supervised classification. Uncovered metal bar, Drainage, oxidized rebar, non-damaged intrados and non-damaged beam has been classified with good results and metrics.

Although the application resulted in accurate results, they can be further improved by enlarging the input dataset by using sensors sensitive to infrared light. Additional studies should explore the possibility of spectral calibration to ensure the model’s replicability.

## References

1. Viadotti: 1.425 sono senza un proprietario e nessuno fa la manutenzione | Milena Gabanelli. <https://www.corriere.it/dataroom-milena-gabanelli/viadotti-1425-sono-senza-proprietario-nessuno-fa-la-manutenzione-ponti-crolli-ecco-mappa/ae3102d2-263f-11e9-9b5e-1a58eb1d569a-va.shtml>. Accessed 5 Mar 2021
2. Mit. Approvate Le Linee Guida per La Sicurezza Dei PontilMit. <https://www.mit.gov.it/comunicazione/news/mit-approvate-le-linee-guida-per-la-sicurezza-dei-ponti>. Accessed 5 Mar 2021
3. Marchewka, A., Ziólkowski, P., Aguilar-Vidal, V.: Framework for structural health monitoring of steel bridges by computer vision. *Sensors* **20**, 700 (2020). <https://doi.org/10.3390/s20030700>
4. Prasanna, P., Dana, K., Gucunski, N., Basily, B.: Computer-vision based crack detection and analysis. In: Proceedings of the Sensors and Smart Structures Technologies for Civil, Mechanical, and Aerospace Systems 2012; International Society for Optics and Photonics, April 6 2012, vol. 8345, p. 834542 (2012)
5. Dinh, T.H., Ha, Q.P., La, H.M.: Computer vision-based method for concrete crack detection. In: Proceedings of the 2016 14th International Conference on Control, Automation, Robotics and Vision (ICARCV), November 2016; pp. 1–6 (2016)
6. Hoang, N.-D.: Image Processing-Based Recognition of Wall Defects Using Machine Learning Approaches and Steerable Filters. <https://www.hindawi.com/journals/cin/2018/7913952/>. Accessed 5 Mar 2021
7. Park, J.-K., Kwon, B.-K., Park, J.-H., Kang, D.-J.: Machine learning-based imaging system for surface defect inspection. *Int. J. Precision Eng. Manuf. Green Technol.* **3**(3), 303–310 (2016). <https://doi.org/10.1007/s40684-016-0039-x>
8. Flah, M., Nunez, I., Ben Chaabene, W., Nehdi, M.L.: Machine Learning algorithms in civil structural health monitoring: a systematic review. *Arch. Comput. Methods Eng.* **28**(4), 2621–2643 (2020). <https://doi.org/10.1007/s11831-020-09471-9>
9. Xue, Y., Li, Y.: A fast detection method via region-based fully convolutional neural networks for shield tunnel lining defects: a fast detection method via region-based fully convolutional neural networks for shield tunnel lining defects. *Comput.-Aided Civ. Infrastruct. Eng.* **33**, 638–654 (2018). <https://doi.org/10.1111/mice.12367>
10. Hassan, S.I., et al.: Underground sewer pipe condition assessment based on convolutional neural networks. *Autom. Constr.* **106**, 102849 (2019). <https://doi.org/10.1016/j.autcon.2019.102849>.
11. Wells, J., Lovelace, B.: Unmanned Aircraft System Bridge Inspection Demonstration Project Phase II Final Report; Minnesota Department of Transportation: St. Paul, MN (2017)
12. Hernandez, I., Fields, T., Kevern, J.: Overcoming the challenges of using unmanned aircraft for bridge inspections. In: AIAA Atmospheric Flight Mechanics Conference; American Institute of Aeronautics and Astronautics
13. Gillins, D.T., Parrish, C., Gillins, M.N., Simpson, C.: Eyes in the Sky: Bridge Inspections with Unmanned Aerial Vehicles (2018)
14. Gopalakrishnan, K., Gholami, H., Vidyadharan, A., Choudhary, A., Agrawal, A.: Crack damage detection in unmanned aerial vehicle images of civil infrastructure using pre-trained deep learning model. *Int. J. Traffic Transp. Eng.* **8**, 1–14 (2018). [https://doi.org/10.7708/ijtte.2018.8\(1\).01](https://doi.org/10.7708/ijtte.2018.8(1).01)
15. Piras, M., Grasso, N., Abdul Jabbar, A.: UAV photogrammetric solution using a raspberry pi camera module and smart devices: test and results. In: Proceedings of the ISPRS - International Archives of the Photogrammetry, Remote Sensing and Spatial Information Sciences; Copernicus GmbH, August 24 2017; Vol. XLII-2-W6, pp. 289–296 (2017)

16. MicMac. <https://micmac.engsg.eu/index.php/Accueil>. Accessed 5 Mar 2021
17. Deseilligny, M.P., Clery, I.: Apero, an open source bundle adjustment software for automatic calibration and orientation of set of images, 8 (2011)
18. Lowe, D.G.: Object recognition from local scale-invariant features. In: Proceedings of the Proceedings of the Seventh IEEE International Conference on Computer Vision, September 1999, vol. 2, pp. 1150–1157 (1999)
19. Hussain, M., Chen, D., Cheng, A., Wei, H., Stanley, D.: Change detection from remotely sensed images: from pixel-based to object-based approaches. *ISPRS J. Photogramm. Remote Sens.* **80**, 91–106 (2013). <https://doi.org/10.1016/j.isprsjprs.2013.03.006>
20. Lu, D., Weng, Q.: A survey of image classification methods and techniques for improving classification performance. *Int. J. Remote Sens.* **28**, 823–870 (2007). <https://doi.org/10.1080/01431160600746456>
21. Meneguzzo, D.M., Liknes, G.C., Nelson, M.D.: Mapping trees outside forests using high-resolution aerial imagery: a comparison of pixel- and object-based classification approaches. *Environ. Monit. Assess.* **185**, 6261–6275 (2013). <https://doi.org/10.1007/s10661-012-3022-1>
22. Rastner, P., Bolch, T., Notarnicola, C., Paul, F.: A comparison of pixel- and object-based glacier classification with optical satellite images. *IEEE J. Sel. Top. Appl. Earth Obs. Remote Sens.* **7**, 853–862 (2014). <https://doi.org/10.1109/JSTARS.2013.2274668>
23. Orfeo ToolBox – Orfeo ToolBox Is Not a Black Box
24. Michel, J., Youssefi, D., Grizonnet, M.: Stable mean-shift algorithm and its application to the segmentation of arbitrarily large remote sensing images. *IEEE Trans. Geosci. Remote Sens.* **53**, 952–964 (2015). <https://doi.org/10.1109/TGRS.2014.2330857>
25. Maxwell, A.E., Warner, T.A., Fang, F.: Implementation of machine-learning classification in remote sensing: an applied review. *Int. J. Remote Sens.* **39**, 2784–2817 (2018). <https://doi.org/10.1080/01431161.2018.1433343>
26. Salah, M.: A Survey of Modern Classification Techniques in Remote Sensing for Improved Image Classification. **11**, 21 (2017)
27. Jin, Y., Liu, X., Chen, Y., Liang, X.: Land-cover mapping using random forest classification and incorporating NDVI time-series and texture: a case study of central shandong. *Int. J. Remote Sens.* **39**, 8703–8723 (2018). <https://doi.org/10.1080/01431161.2018.1490976>
28. Lewiński, S., Aleksandrowicz, S., Banaszkiwicz, M.: Testing texture of VHR panchromatic data as a feature of land cover classification. *Acta Geophys.* **63**(2), 547–567 (2015). <https://doi.org/10.2478/s11600-014-0250-5>
29. Zhang, X., et al.: Monitoring vegetation phenology using MODIS. *Remote Sens. Environ.* **84**, 471–475 (2003). [https://doi.org/10.1016/S0034-4257\(02\)00135-9](https://doi.org/10.1016/S0034-4257(02)00135-9)
30. Drzewiecki, W., Wawrzaszek, A., Krupiński, M., Aleksandrowicz, S., Jenerowicz, M.: Multi-fractal parameters in prediction of land-use components on satellite images. In: Proceedings of the 2019 Signal Processing: Algorithms, Architectures, Arrangements, and Applications (SPA), September 2019, pp. 296–301 (2019)
31. Merciol, F., Balem, T., Lefèvre, S.: Efficient and Large-Scale Land Cover Classification Using Multiscale Image Analysis, 5 (2019)
32. Pelletier, C., Valero, S., Inglada, J., Dedieu, G., Champion, N.: An assessment of image features and random forest for land cover mapping over large areas using high resolution satellite image time series. In: Proceedings of the 2016 IEEE International Geoscience and Remote Sensing Symposium (IGARSS), July 2016, pp. 3338–3341 (2016)
33. Haralick, R.M., Shanmugam, K., Dinstein, I.: Textural features for image classification. *IEEE Trans. Syst. Man Cybern.* **SMC-3**, 610–621 (1973). <https://doi.org/10.1109/TSMC.1973.4309314>
34. Chawla, N.V., Bowyer, K.W., Hall, L.O., Kegelmeyer, W.P.: SMOTE: synthetic minority over-sampling technique. *J. Artif. Intell. Res.* **16**, 321–357 (2002). <https://doi.org/10.1613/jair.953>

35. Breiman, L.: Random forests. *Mach. Learn.* **45**, 5–32 (2001). <https://doi.org/10.1023/A:1010933404324>
36. Hastie, T., Tibshirani, R., Friedman, J.: Random forests. In: Hastie, T., Tibshirani, R., Friedman, J. (eds.) *The Elements of Statistical Learning: Data Mining, Inference, and Prediction*; Springer Series in Statistics, pp. 587–604. Springer, New York (2009). ISBN 978-0-387-84858-7
37. Breiman, L., Spector, P.: Submodel selection and evaluation in regression. The X-Random Case. *Int. Stat. Rev. Rev. Int. Stat.* **60**, 291 (1992). <https://doi.org/10.2307/1403680>
38. Kohavi, R.: A Study of Cross-Validation and Bootstrap for Accuracy Estimation and Model Selection, 8

**Open Access** This chapter is licensed under the terms of the Creative Commons Attribution 4.0 International License (<http://creativecommons.org/licenses/by/4.0/>), which permits use, sharing, adaptation, distribution and reproduction in any medium or format, as long as you give appropriate credit to the original author(s) and the source, provide a link to the Creative Commons license and indicate if changes were made.

The images or other third party material in this chapter are included in the chapter's Creative Commons license, unless indicated otherwise in a credit line to the material. If material is not included in the chapter's Creative Commons license and your intended use is not permitted by statutory regulation or exceeds the permitted use, you will need to obtain permission directly from the copyright holder.

