

Ecclesiastical cultural heritage: risk assessment and planning of prevention and regeneration

Original

Ecclesiastical cultural heritage: risk assessment and planning of prevention and regeneration / Longhi, Andrea; de Lucia, Giulia. - ELETTRONICO. - (2021). (Europe's Living Religious Heritage web sessione del 26 novembre 2021 (sostitutiva di congresso dal vivo Barcelona maggio 2021)).

Availability:

This version is available at: 11583/2952239 since: 2022-01-21T17:36:43Z

Publisher:

Future for Religious Heritage

Published

DOI:

Terms of use:

This article is made available under terms and conditions as specified in the corresponding bibliographic description in the repository

Publisher copyright

(Article begins on next page)

ECCLESIASTICAL CULTURAL HERITAGE: RISK ASSESSMENT AND PLANNING OF PREVENTION AND REGENERATION

Director of research: Andrea Longhi; Research Board: Grazia Brunetta e Angioletta Voghera, Rosario Ceravolo, Silvia Crivello;
Project Manager: Giulia De Lucia; Research Staff: Benedetta Giudice, Stefano Salata

BCE-RPR METHOD

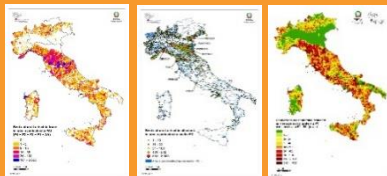
MULDISCIPLINARY TEAM

- architectural historians
- urban planners
- structural engineers
- social scientists



TERRITORIAL RISK MAPS

- National territorial vulnerabilities and risks maps: ISPRA; INGV



R3C-ELABORATIONS

- Cartographic elaboration of territorial case studies



CHURCH CENSUS SCHEDULES INTERPRETATION

Location
Typology
Structural information
Age of construction

Architectural details
Level of maintenance
Photos



VISUALIZATION OF PRIORITIES

- Index of specific risk for each church
- **Aggregate Risk index** for the large scale planning of activities



MAIN GOALS OF THE PROJECT

The project aimed the investigation of the relation between technical processes for the risk evaluation and the development of decision supporting strategies for planning heritage prevention and maintenance activities, by considering the social and relational processes that deal ecclesiastic heritage governance.

The main focuses of the project:

- investigation on the capitalization of data from Italian Census of Churches in the perspective of risk evaluation
- analysis on interoperability between national open-access databases regarding religious heritage and territorial vulnerabilities
- development of speditive methodology for the integrated risk evaluation to be applied in decisional strategies by heritage managing bodies
- State of the art of research projects, investigation methods and initiatives dealing religious heritage and community participation in the decisional processes about valorisation and regeneration
- evaluation of the strategies to include the theme of risk in the managing ordinary practices of ecclesiastical heritage

REFERENCE FRAMEWORK

16
22
25.597
➤ 66.000
➤ 100.000

ITALIAN ECCLESIASTICAL REGIONS
DIOCESES
PARISHES
ECCLESIASTICAL CHURCHES
CHURCHES INCLUDING OTHER PROPERTIES

SEISMIC RISK

FLOOD RISK

LANDSLIDE RISK

FIRE RISK

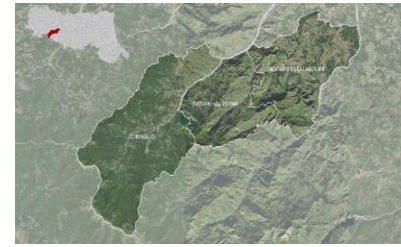
...and much more risks...

- Industrial
- War
- Volcanic
- Theft
- Abandonment
- Pollution

• Territorial and Risk Case Studies



Piedmont:
7 towns; 74 churches; 2 risks



Emilia Romagna:
3 towns; 65 churches; 2 risks



Campania:
4 towns; 37 churches; 1 risk

Future scenarios:

- Application and experimentation of the method in real territories also through inclusion of communities
- Strengthening of census procedures
- Awareness raising on the risk problems for heritage managing bodies
- Integration of databases