

Modelling and Validation of Cavitating Orifice Flow in Hydraulic Systems

Original

Modelling and Validation of Cavitating Orifice Flow in Hydraulic Systems / Casoli, Paolo; Scolari, Fabio; Rundo, Massimo. - In: SUSTAINABILITY. - ISSN 2071-1050. - ELETTRONICO. - 13:13(2021), p. 7239. [10.3390/su13137239]

Availability:

This version is available at: 11583/2911216 since: 2021-07-16T08:00:42Z

Publisher:

MDPI

Published

DOI:10.3390/su13137239

Terms of use:

This article is made available under terms and conditions as specified in the corresponding bibliographic description in the repository

Publisher copyright

(Article begins on next page)

Article

Modelling and Validation of Cavitating Orifice Flow in Hydraulic Systems

Paolo Casoli ^{1,*} , Fabio Scolari ¹  and Massimo Rundo ² ¹ Department of Engineering and Architecture, University of Parma, 43124 Parma, Italy; fabio.scolari@unipr.it² Department of Energy, Politecnico di Torino, 10129 Turin, Italy; massimo.rundo@polito.it

* Correspondence: paolo.casoli@unipr.it

Abstract: Cavitation can occur at the inlet of hydraulic pumps or in hydraulic valves; this phenomenon should be always avoided because it can generate abnormal wear and noise in fluid power components. Numerical modeling of the cavitation is widely used in research, and it allows the regions where it occurs more to be predicted. For this reason, two different approaches to the study of gas and vapor cavitation were presented in this paper. In particular, a model was developed using the computational fluid dynamics (CFD) method with particular attention to the dynamic modeling of both gaseous and vapor cavitation. A further lumped parameter model was made, where the fluid density varies as the pressure decreases due to the release of air and the formation of vapor. Furthermore, the lumped parameter model highlights the need to also know the speed of sound in the vena contracta, since it is essential for the correct calculation of the mass flow during vaporization. A test bench for the study of cavitation with an orifice was set up; cavitation was induced by increasing the speed of the fluid on the restricted section thanks to a pump located downstream of the orifice. The experimental data were compared with those predicted by CFD and lumped parameter models.



Citation: Casoli, P.; Scolari, F.; Rundo, M. Modelling and Validation of Cavitating Orifice Flow in Hydraulic Systems. *Sustainability* **2021**, *13*, 7239. <https://doi.org/10.3390/su13137239>

Academic Editor: Pedro Javier Gamez-Montero

Received: 25 May 2021
Accepted: 24 June 2021
Published: 28 June 2021

Publisher's Note: MDPI stays neutral with regard to jurisdictional claims in published maps and institutional affiliations.



Copyright: © 2021 by the authors. Licensee MDPI, Basel, Switzerland. This article is an open access article distributed under the terms and conditions of the Creative Commons Attribution (CC BY) license (<https://creativecommons.org/licenses/by/4.0/>).

Keywords: cavitation; choked flow; speed of sound

1. Introduction

In fluid power systems, the cavitation phenomenon has strong negative effects; when cavitation occurs at the inlet of a pump, the delivered flow rate is reduced, and a mechanical degradation of the internal part of the pump takes place, affecting the pump efficiency; in hydraulic valves, cavitation can occur through the internal narrow orifice.

The consequences of cavitation include erosion damage due to the implosion of air or vapor bubbles, reduction of the flow rate through the systems, and vibrations that can further damage the components of the hydraulic circuit, as well as being a source of noise. Cavitation is a very complex phenomenon that can be analyzed on two aspects: gaseous cavitation and vapor cavitation.

Gaseous cavitation occurs when the fluid pressure falls below the saturation pressure, which is generally atmospheric pressure, and it results in the release of the gas dissolved in the oil. Similarly, vapor cavitation occurs when the pressure reaches values below the vapor pressure of the fluid.

Cavitation is a topic that has been studied by numerous researchers, and several numerical models, mainly implemented in CFD codes, have been proposed to describe the phenomenon. The most used are the models proposed by Schnerr and Sauer [1], Zwart et al. [2], and Shinghal et al. [3], which are present in most commercial software packages. However, these models allow the simulation of vaporous cavitation, but do not all allow gaseous cavitation to also be included. This article presents a CFD model in which both vapor and gaseous cavitation are implemented. The first is simulated through the model proposed by Zwart et al., while the second is analyzed through Henry's law, considering the fluid as a homogeneous mixture of hydraulic oil and dissolved air. Furthermore,

both cavitation models are dynamic and require a time constant that characterizes the speed of the physical phenomenon of absorption and the release of air and of vaporization and condensation of vapor. The CFD model was implemented in Ansys[®] CFX.

Other researchers have analyzed the problem through lumped parameter mathematical models. The lumped parameter approach is widely used in the industrial field, and it is implemented in many popular software packages, such as Simcenter Amesim[®]. Zhou et al. [4,5] developed a lumped parameter model for the study of gaseous cavitation in hydraulic orifices, obtaining good results from the experimentation. Shah et al. [6] proposed a model for the study of both gaseous and vapor cavitation by applying it to gear pumps; the same authors [7,8] used the identical methodology on gerotor pumps. Rundo et al. [9] presented an article on lubrication pumps which considers the air dissolution dynamics, reaching a great correspondence with experimental results.

In this work, a lumped parameter fluid model was also developed; the density of the fluid varied because of the contribution of air release and vapor formation.

An experimental campaign was carried out where a pump generated an increasing pressure difference across the orifice, inducing the generation of cavitation. The flow rate and pressures through the orifice were measured. With these data, it was possible to identify the parameters that characterize the dynamics of the phenomenon within the CFD model. The simulations were performed with two sets of parameters found in the scientific literature, namely those from the researches of Del campo et al. [10] and Zhou et al. [4].

Furthermore, the lumped parameter model highlighted the need, during the vaporous cavitation phase, to limit the flow velocity to the sound velocity. In this way it is possible to correctly calculate the choked flow condition and the corresponding mass flow rate.

The work is structured as follows: Section 2 analytically describes the CFD model used. The Section 3 illustrates the developed lumped parameter mathematical model. The experimental activity carried out is described in Section 4, with the characteristics of the sensors used and the results obtained. Detailed comparisons between the experimental and simulated results are provided in Sections 5 and 6.

2. CFD Model

The fluid model implemented in the CFD simulations is a three-phase fluid model, composed by liquid, air, and vapor. For mass conservation, the sum of the volume fractions of the phases must be unitary:

$$f_l + f_g + f_v = 1 \quad (1)$$

where f_l is the liquid mass fraction, f_g the air mass fraction, and f_v the vapor mass fraction. Furthermore, the liquid phase is modelled as a variable composition mixture consisting of oil and dissolved air.

2.1. Gaseous Cavitation

The non-condensable gases exist in the dissolved state in the liquid and in the free gaseous state; to account for all effects of the non-condensable gases, the variation of both free and dissolved gas mass fractions has to be tracked.

The non-condensable gases mass fraction f_A of Equation (1) needs to be split into two components:

$$f_g = f_{g,g} + f_{g,l} \quad (2)$$

In the CFD code, two convection–diffusion equations have been added, Equations (3) and (4): one for non-condensable gases in gaseous phase, $f_{g,g}$ and one for non-condensable gases in dissolved liquid phase, $f_{g,l}$.

$$\frac{\partial(\rho f_{g,g})}{\partial t} + \nabla \cdot \left(\rho \vec{U} f_{g,g} - D_{g,g} (\nabla f_{g,g}) \right) = \dot{S}_{DA} \quad (3)$$

$$\frac{\partial(\rho f_{g,l})}{\partial t} + \nabla \cdot \left(\rho \vec{U} f_{g,l} - D_{g,l} (\nabla f_{g,l}) \right) = -\dot{S}_{DA} \quad (4)$$

The source term links the exchange between the two states, and the expression is

$$\dot{S}_{DA} = R_d - R_a = \begin{cases} C_d \rho_g (p_{equil} - p_g) (1 - f_{g,g}) f_{g,l} \\ C_a \rho_g (p_g - p_{equil}) (f_{g,l,lim} - f_{g,l}) f_{g,g} \end{cases} \quad (5)$$

where R_d and R_a are the mass rate for desorption and absorption, respectively. C_d and C_a are empirical coefficients to be determined that influence the speed with which the associated phenomenon occurs.

Equation (5) establishes that the driving force of the process is the equilibrium differential pressure; the release of gas happens when the gas partial pressure p_g is below the equilibrium pressure of p_{equil} . Likewise, absorption occurs when the partial pressure is above the equilibrium pressure. The equilibrium pressure is assumed as the sum of the vapor pressure and the gas partial pressure, calculated as the product between the Henry constant and the molar mass of the dissolved air.

2.2. Vapor Cavitation

To model the phenomenon of vapor cavitation, a transport equation for the vapor phase was introduced in the CFD model. The interphase mass transfer rates, \dot{m}_{fg} , of oil evaporation and condensation were studied using the Rayleigh–Plesset model, which controls the evolution of a bubble in a liquid.

$$R_B \frac{d^2 R_B}{dt^2} + \frac{3}{2} \left(\frac{dR_B}{dt} \right)^2 + \frac{2\sigma}{\rho_l R_B} = \frac{p_v - p}{\rho_l} \quad (6)$$

where R_B represents the bubble radius and p_v is the vaporization pressure.

The mathematical formulation of this model is described in [11]. The equation that regulates the condensation of vapor bubbles is

$$\dot{m}_{fg} = F \frac{3r_g \rho_g}{R_B} \sqrt{\frac{2}{3} \frac{|p_v - p|}{\rho_l}} \text{sign}(p_v - p) \quad (7)$$

while for vapor formation the control equation is

$$\dot{m}_{fg} = F \frac{3R_{nuc}(1 - r_g) \rho_g}{R_B} \sqrt{\frac{2}{3} \frac{|p_v - p|}{\rho_f}} \text{sign}(p_v - p) \quad (8)$$

In Equations (7) and (8), F is an empirical coefficient that determines the intensity of the process and could be different in the case of condensation, F_c , or vaporization, F_v .

3. Lumped Parameter Approach

A lumped parameter fluid model was developed to simulate the behavior of the fluid in the presence of both gaseous and vapor cavitation. This model, realized in the MATLAB[®] environment, assumes that at pressure levels higher than the saturation pressure, the entire quantity of gas is completely dissolved in the liquid [12]. Thus, the gas does not contribute in volume but only in mass in the equation of state of the fluid and therefore it follows the compressibility law of the liquids. Below the saturation pressure, according to the Dalton–Henry law, part of the gas begins to separate and therefore to increase the total volume of the fluid. Three different pressure ranges are considered.

- $p > p_{SAT}$

The volume fraction x of dissolved air does not contribute to increase the total volume, because the small gas molecules are placed in the interstices among the larger liquid molecules, but it only increases the mass of the fluid. In this way, the density of the fluid constituted by liquid and air is

$$\rho_0 = \rho_{L0} + \frac{x}{1-x} \rho_{G0} \quad (9)$$

Considering the liquid bulk modulus B , the following expression of the density could be obtained

$$\rho(p) = \rho_0 \cdot e^{\frac{p-p_0}{B}} \quad (10)$$

- $p_{VAPL} < p < p_{SAT}$

It is assumed that the gas begins to release at pressures below p_{SAT} and that this process ends at the lower vapor pressure p_{VAPL} . Since the lower vaporization pressure is a very low value, as reported in Table 1, once p_{VAPL} is reached, it is assumed that all gas has been completely released. The free gas fraction follows Henry's law.

$$\theta = \frac{p_{SAT} - p}{p_{SAT} - p_{VAPL}} \quad (11)$$

However, the first derivative of $\theta(p)$ is not continuous; in order to avoid discontinuities and thus avoid numerical problems, the function $\theta(p)$ was replaced by a polynomial expression with null derivative at p_{SAT} and p_{VAPL} .

At pressure levels lower than p_{VAPH} the oil begins to vaporize, and the fluid is modelled as a uniform mixture of free air, oil vapor, and liquid oil. In this pressure range, the vapor to liquid mass fraction is described with a polynomial function.

$$\varphi = \frac{m_V}{m_L} = \begin{cases} 0, & p \geq p_{VAPH} \\ \varphi(p), & p_{VAPL} < p < p_{VAPH} \\ 1, & p \leq p_{VAPL} \end{cases} \quad (12)$$

The fluid density can be expressed as a function of pressure and temperature, assuming that the liquid density is independent of temperature. It is also supposed that both free gas and vapor phases follow an isentropic transformation.

$$\rho = \frac{(1-x)\rho_{L0} + x\rho_{G0}}{(1-x)(1-\varphi) \cdot e^{\left(\frac{p_0-p}{B}\right)} + \frac{T}{T_0} \left[\frac{\varphi(1-x)\rho_{L0}}{\rho_{V0}} \left(\frac{p_{VAPH}}{p}\right)^{\frac{1}{\gamma_v}} + x\theta \left(\frac{p_0}{p}\right)^{\frac{1}{\gamma_g}} \right]} \quad (13)$$

where

$$\rho_{V0} = \frac{\tilde{m}}{\bar{R}_G \cdot T_0} p_{VAPH} \quad (14)$$

- $p < p_{VAPL}$

When the fluid pressure decreases below the lower vapor pressure, only the gas phase exists. The density can be determined setting $\varphi = 1$ in Equation (13).

The definition of the upper and lower vapor pressure is affected by the considerable uncertainty of the chemical composition of the hydraulic oil. The higher value was set to 0.2 bar, while the lower saturation pressure was estimate using the Clapeyron equation referred to the one of the oil components, the eptadecane, $C_{17}H_{36}$ [13].

Table 1. Main parameters of the model.

Variable	Value	Unit
x	9	%
p_{SAT}	1	bar
p_{VAPH}	0.2	bar
p_{VAPL}	0.0001	bar

Figure 1 shows the density of the fluid as a function of pressure. Once the saturation pressure is reached, the density decreases markedly due to the release of the air contained in the liquid; once all the air is released, the density decreases further as a result of the gradual formation of vapor.

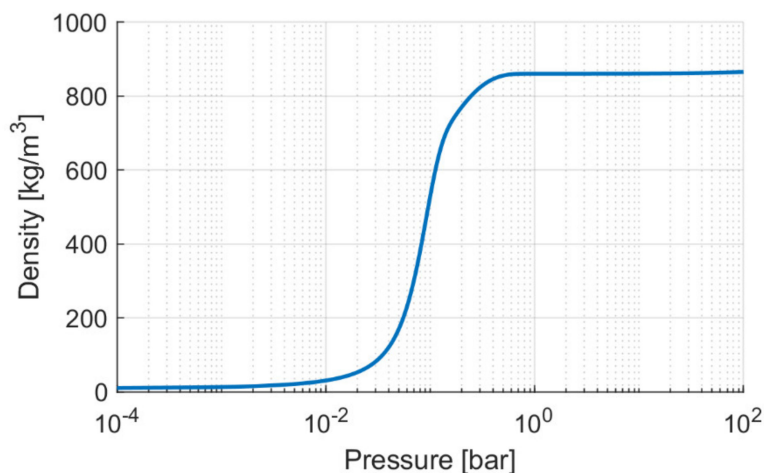


Figure 1. Density of the fluid as a function of pressure expressed in the logarithmic scale.

Adopting this model to predict the mass flow through a throat where the total pressure at inlet is p_T and the downstream pressure is p_s , the ideal fluid velocity at the throat is calculated as

$$c_{id} = \int_{p_s}^{p_T} \frac{dp}{\rho} \tag{15}$$

for $p > p_{sat}$ the integral is analytically solvable and leads to

$$c_{id} = \int_{p_s}^{p_T} \frac{dp}{\rho} = -\frac{B}{\rho_0} \left[e^{\frac{p_{ATM}-p_T}{B}} - e^{\frac{p_{ATM}-p_s}{B}} \right] \tag{16}$$

In the other cases the integral must be solved numerically.

This velocity value must be compared with the speed of sound at the static downstream pressure

$$c_{sound} = \int \frac{dp}{d\rho} \tag{17}$$

where

$$\frac{dp}{d\rho} = -\frac{\Psi}{\Pi} \left[(1-x) \left(\frac{1-\varphi}{B} - \frac{d\varphi}{dp} \right) e^{\frac{p_0-p}{B}} + \frac{\partial\varphi}{\partial p} C_1 p^{-\frac{1}{\gamma}} - \frac{C_1 + \varphi C_2}{\gamma} p^{-1-\frac{1}{\gamma}} \right]^{-1} \tag{18}$$

and

$$\Pi = (1-x)\rho_{L0} + x\rho_{G0} \tag{19}$$

$$\Psi = \left((1-x)e^{\frac{p_0-p}{B}} + \vartheta x \frac{T}{T_0} \left(\frac{p_0}{p} \right)^{\frac{1}{\gamma}} \right)^2 \tag{20}$$

$$C_1 = x \frac{T}{T_0} p_0^{\frac{1}{\gamma}} \quad (21)$$

$$C_2 = (1 - x) \frac{T}{T_0} p_{VAPH}^{\frac{1}{\gamma}} \quad (22)$$

The correct value of the velocity to be used for the calculation of the mass flow rate is the minimum between the speed of sound and the ideal velocity given by the Equation (15).

The trend of the speed of sound, calculated by means of Equation (17), is reported in Figure 2. In general, it is a very high value, but as it is possible to see from the graph, for low pressures, such as the values involved in cavitation, the speed of sound decreases markedly; it is exactly in this pressure range that it is necessary to compare it with the ideal speed calculated with Equation (15).

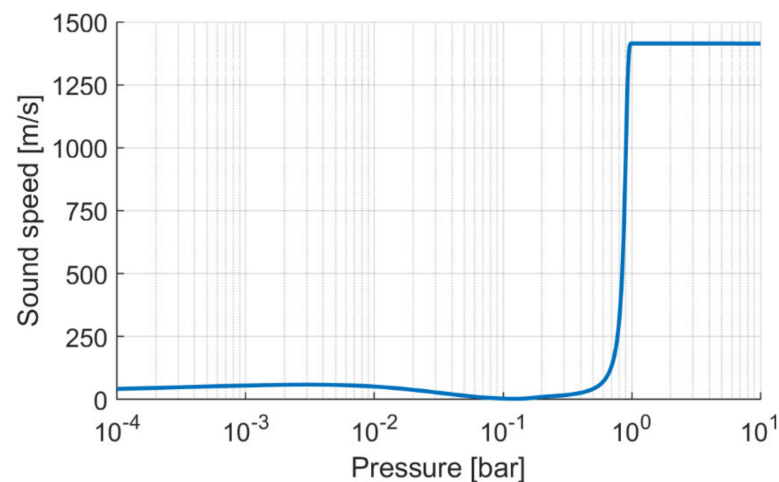


Figure 2. Speed of sound as a function of pressure.

4. Experimental Activity

The experimental activity was conducted at the test rig located in the Laboratory of the Engineering and Architectural Department at the University of Parma.

The hydraulic scheme of the experimental layout is reported in Figure 3, and the transducers' features are shown in Table 2. The oil is an ISO-VG 46, and the test temperature was set to 40 °C.

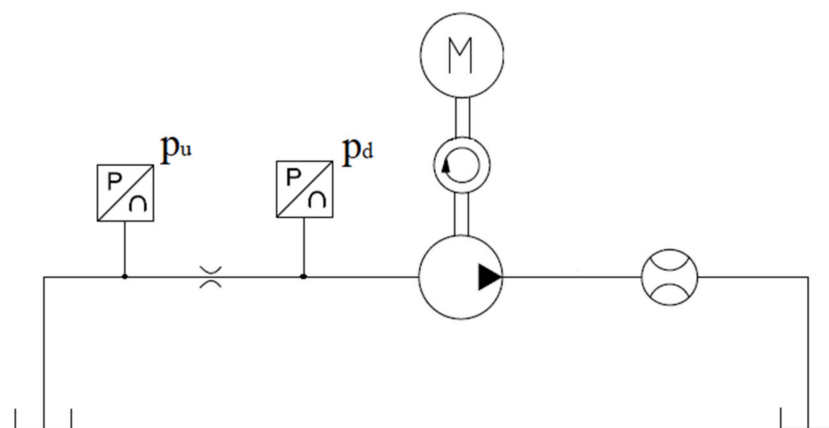


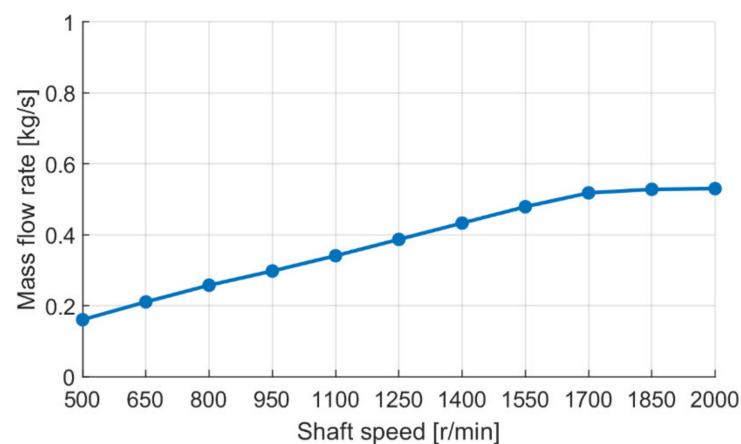
Figure 3. ISO scheme of the test bench layout.

Table 2. Sensors installed on the test bench and relative characteristics.

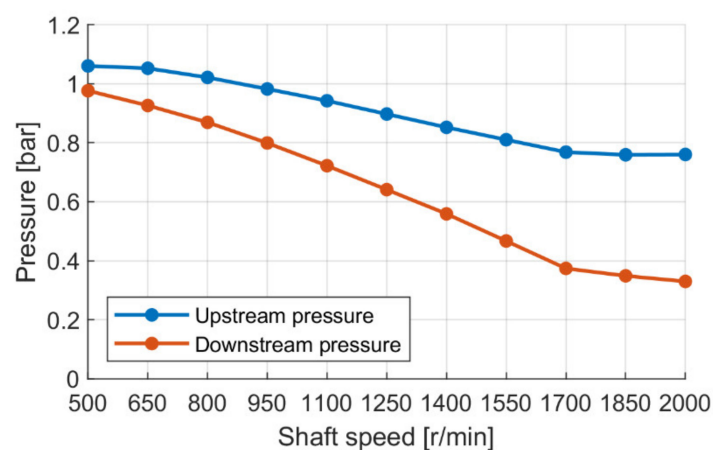
Variable	Sensor	Main Features
p_u	Pressure Transducer	0–10 barA \pm 0.5%FS
p_d	Pressure Transducer	0–10 barA \pm 0.5%FS
$\dot{V}_{delivery}$	Flow Meter	0.1–80 L/min \pm 0.3% measured value
ω	Speed sensor	accuracy class 0.05

A fixed orifice was installed upstream of the pump in order to generate a pressure drop and to provide a low pressure value at the pump inlet. The pressure drop was given by the fluid velocity passing through the orifice and was controlled by the rotational speed of the pump. In order to accurately calibrate the parameters of the CFD model, the flow rate passing through the circuit and the absolute pressures upstream and downstream of the orifice were measured.

Figure 4 shows the flow rate measured by the flowmeter as the rotational speed increases.

**Figure 4.** Experimental mass flow rate as a function of pump shaft speed.

In particular, up to 1550 r/min, the flow rate increased linearly with speed, and in this operating range, the main phenomenon was the release of a fraction of the dissolved gas; by further increasing the speed, the flow rate remained constant, and this was in accordance with what is also reported in [14]. In fact, the pressure drop across the orifice did not increase much because the phenomenon of vaporous cavitation was established, which limited the minimum pressure reached downstream of the orifice, as can be seen in Figure 5.

**Figure 5.** Experimental data of pressure acquired upstream and downstream of the orifice.

5. CFD Simulations

The geometry of the pipe is shown in the Figure 6, where the length of the channel corresponds to the distance between the two pressure sensors, and the main geometric relationships are shown in the Table 3. Since the geometry is axisymmetric, 2D geometry was used in the CFD simulations.

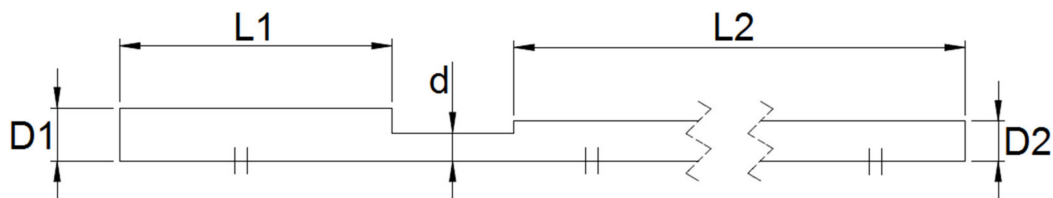


Figure 6. Sketch of the tested orifice.

Table 3. Geometric characteristic of the orifice.

Geometric Relationship	Value
$D1/d$	1.8
$D1/D2$	1.3
$L1/d$	4.9
$L2/d$	12.9

The simulations were done with ANSYS® CFX software. The gas cavitation model is not present in CFX, but it was implemented through the CFX Expression Language (CEL). CEL is a scripting language inside the main CFD code that allows operations on additional user-defined variables to be performed.

The fluid domain consists of a structured mesh, whose number of cells was established following a sensitivity analysis. The main features of the mesh are shown in Table 4.

Table 4. Mesh parameters.

Min Element Size	Max Element Size	Average Element Quality	Average Aspect Ratio	Average Orthogonal Quality	Average Skewness
$2.5 \cdot 10^{-5}$	$3.0 \cdot 10^{-4}$	$3.6 \cdot 10^{-1}$	7.2	$9.6 \cdot 10^{-1}$	$5.0 \cdot 10^{-3}$

The turbulence model used is the standard k-epsilon. The absolute pressures measured by the sensors during the experimental activity were imposed as boundary conditions at the inlet and outlet. The upper wall was considered as a wall with a no slip condition, while the symmetry boundary was imposed on the front plane where the axis of symmetry was the one indicated in Figure 6.

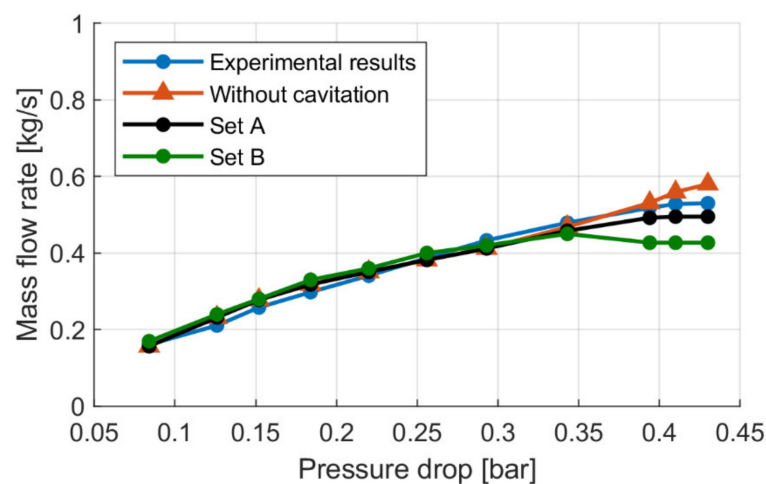
In Table 5, the parameters used in the model are reported. Two sets of parameters reported differ in the vaporization coefficients. Zhou et al. [4] proposed the values of Set A, studying gaseous cavitation by applying a model of vaporous cavitation in a hydraulic circuit with an orifice inside. These values were also reported in the research of Del Campo et al. [10], who studied the phenomenon of gaseous cavitation in external gear pumps. These values were also adopted in a previous work [11], where the influence of cavitation on textured surfaces was studied. Generally, the vaporization coefficient is greater than the condensation one, because condensation is a process that occurs more slowly than vaporization, and this aspect is quantified with the F_c and F_v parameters.

Table 5. Parameters used in numerical simulations.

	Vapor Pressure	R_b	R_{muc}	F_v	F_c	C_d	C_a
Set A	0.2 bar	10 μm	$5 \cdot 10^{-4}$	0.9	0.01	2	-0.1
Set B	0.2 bar	10 μm	$5 \cdot 10^{-4}$	50	0.01	2	-0.1

The air release and absorption model is quite innovative, and in the literature there are only applications with water with the values shown in the table. However, it was decided to use these values because, as will be seen in the simulation results, they allowed good correspondence with the experimental data to be obtained. The absorption constant C_a is smaller than desorption constant C_d for two reasons. The absorption process has to overcome surface tension effect, which opposes higher resistance; and the pressure differential during the air release is bounded by the maximum value of p_{equil} , while it is unbounded during absorption.

Figure 7 shows the mass flow rate through the orifice obtained from the CFD simulations, compared with the experimental results as a function of the pressure drop. The graph shows the simulation results obtained with the two sets of parameters; as long as the pump speed does not exceed 1500 r/min, the pressure drop across the orifice is not enough to generate vapor. In the first part of the graph, therefore, the results of the two sets of parameters are equivalent. At higher pressure drops, however, vapor is also formed, and therefore the vaporization parameters greatly influence the calculated flow rate. Since Set B has a higher vapor formation coefficient than Set A, it involves a greater quantity of vapor, which leads to a lower estimation of the flow rate passing through the orifice. Therefore, the most accurate of the two sets of parameters results is Set A, since it is possible to appreciate a good overlap of the two curves, especially where the flow rate settles and the vapor cavitation is predominant.

**Figure 7.** Comparison between experimental mass flow rate and CFD simulation results with varying parameter sets.

Since the parameter Set B underestimates the flow excessively at high speed, the following results are relative to Set A.

Figure 8 shows the oil speed distribution in the geometry considered in the case of a pressure drop of 0.256 bar; it is important to observe the speed distribution, since it has consequences on the results in terms of pressure distribution and on the formation of the gaseous phases (both air and vapor).

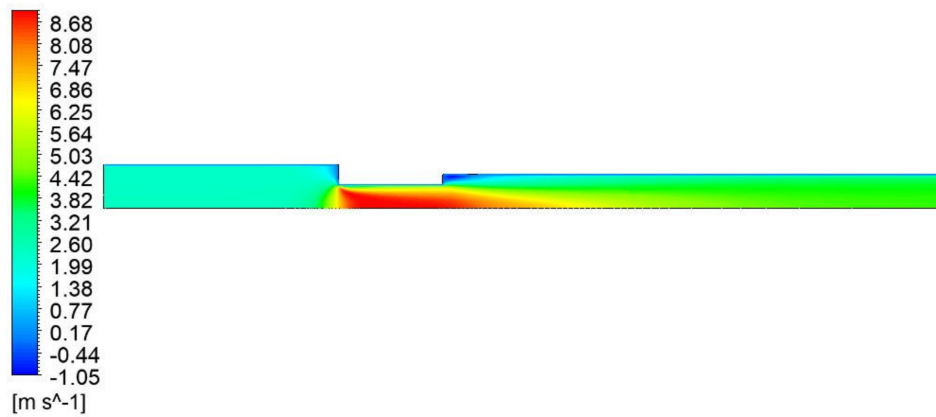


Figure 8. Fluid velocity in the domain. Pressure drop 0.256 bar, Set A parameters.

Figure 9 shows the pressure distribution relative to the case of a pressure drop of 0.256 bar. Near the orifice, where the section is convergent, there is a minimum due to the greater velocity of the fluid. Further downstream, the pressure tends to increase because of the reduction in fluid velocity and the consequent conversion of kinetic energy into pressure.

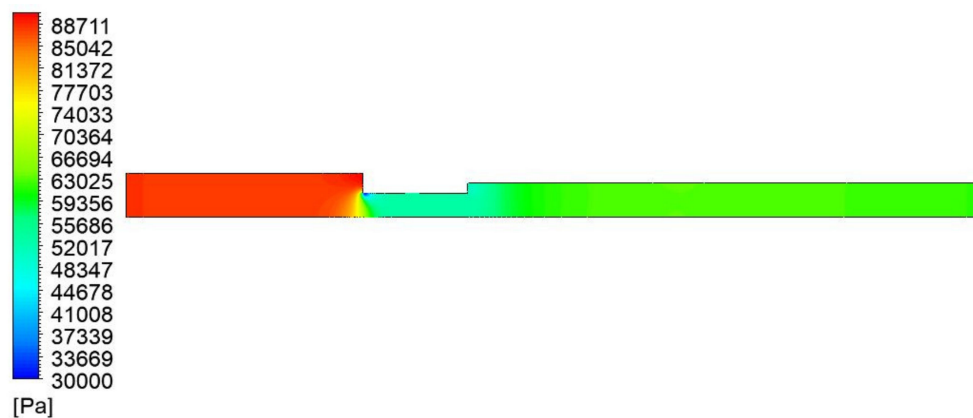


Figure 9. Pressure distribution in the fluid domain. Pressure drop 0.256 bar, Set A parameters.

The Figure 10 shows the volume distribution of free air. The greater quantity is concentrated in the divergent section since this represents a stagnation area; the fluid velocity, as seen in Figure 8, is negative and contributes to increase its concentration in this area.

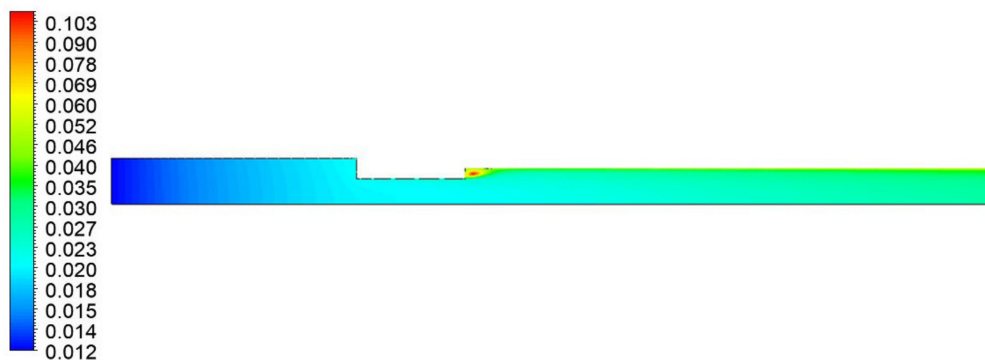


Figure 10. Air volume fraction distribution in the domain. Pressure drop 0.256 bar, Set A parameters.

In this condition, the minimum pressure to also have vapor formation is not reached. By increasing the pressure drop across the orifice, the minimum pressure reached is such

as to trigger the formation of vapor. In Figure 11, it is possible to note that the minimum pressure is the one set as vaporization pressure.

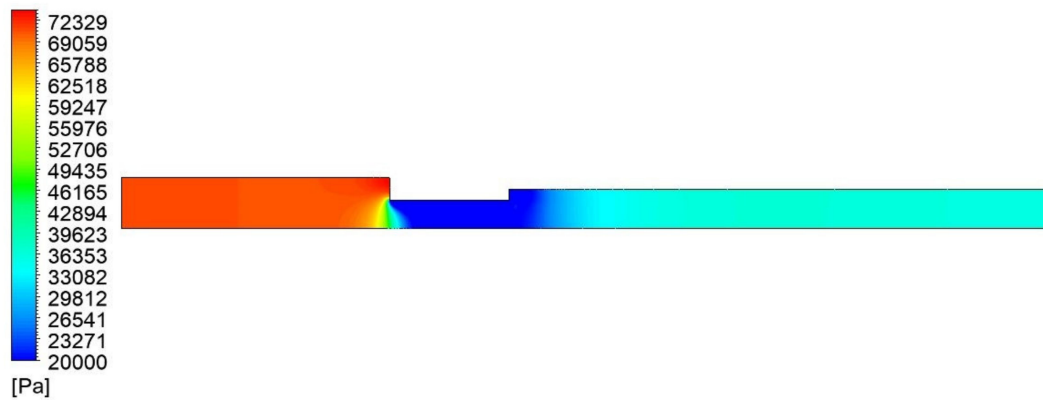


Figure 11. Pressure distribution in the fluid domain. Pressure drop 0.43 bar, Set A parameters.

Figure 12 shows the volume fraction of vapor that is formed in the domain: when the downstream static pressure drops, a region of fluid in the vapor phase forms inside the restriction which narrows the effective section where the fluid flows.

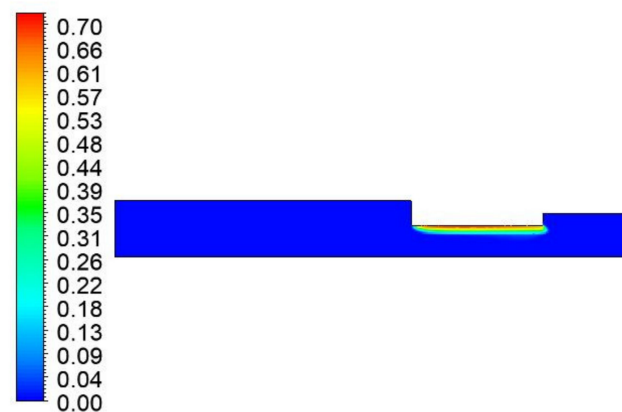


Figure 12. Vapor volume fraction distribution in the domain. Pressure drop 0.43 bar, Set A parameters.

6. Lumped Parameter Model Results

Experimentally, the downstream pressure was acquired distant from the orifice, but in order to correctly apply the orifice equation it is necessary to know its value near the outlet section, which is calculated thanks to CFD simulations.

To calculate the flow rate passing through the orifice, the following equation is used:

$$\dot{m} = C_d \cdot \Omega \cdot \rho \cdot c \quad (23)$$

where Ω is the orifice cross sectional area. The density value ρ used was obtained from Figure 1 at the orifice downstream pressure.

Figure 13 shows a comparison between the experimental results and those obtained from CFD simulations and with the lumped parameter method. As well as the CFD results, the lumped parameter model also predicts the mass flow rate with good accuracy; in fact, the maximum deviation between the experimental data and the results of the CFD simulations was 7%, while the maximum deviation between the experimental data and the lumped parameter model was 6.4%.

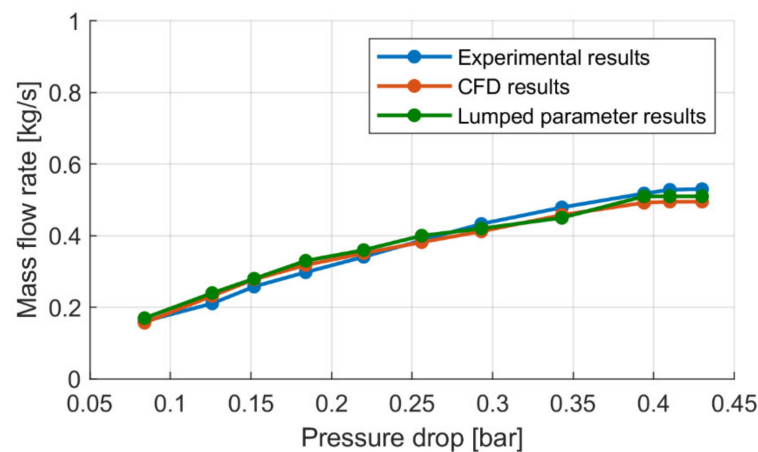


Figure 13. Comparison between experimental results and both CFD and lumped parameter approach results.

To obtain the results shown in Figure 13, it is essential to use the correct flow speed value, the c term in Equation (23), given by the comparison between the ideal speed, Equation (15), and the speed of sound, Equation (17). The use of the expression of the ideal speed in the entire range involves an important overestimation of the mass flow passing through the orifice when vapor cavitation develops (pressure drop greater than 0.34 bar), as seen in Figure 14. However, when a greater pressure drop is generated, the condition where the ideal speed exceeds the speed of sound occurs, represented by the dashed red line. In this case, the speed that should be correctly used is the speed of sound, indicated by the solid green line, while the dashed green line represents the mass flow rate calculated with the speed of sound at a smaller pressure drop. The results show that the mass flow rate predicted by the model corresponded with the experimental one using the ideal speed up to a pressure drop of 0.34 bar and the speed of sound for higher shaft speeds.

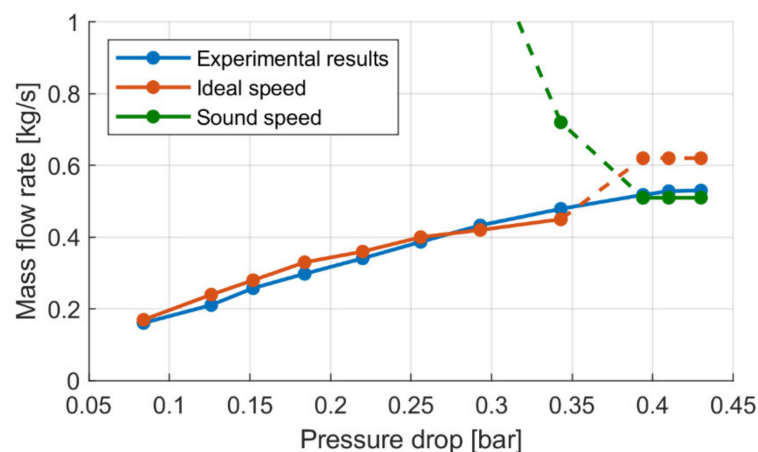


Figure 14. Comparison between the results obtained with the ideal speed and that of sound.

Figure 15 shows two graphs with the comparison between the ideal speed of the fluid and the speed of sound. The first graph, Figure 15a, relates to a total upstream pressure of 1.05 bar; this is the case of a pressure drop of 0.08 bar, and the ideal speed is well below that of sound. This case is representative of conditions up to a pressure drop of 0.34 bar. At even a higher pressure drop, the total upstream pressure is reduced, and the two speeds, ideal and sound, become comparable (Figure 15b), and when vapor is formed, the ideal speed is greater. To correctly calculate the mass flow rate, it is therefore necessary to use the value of the speed of sound.

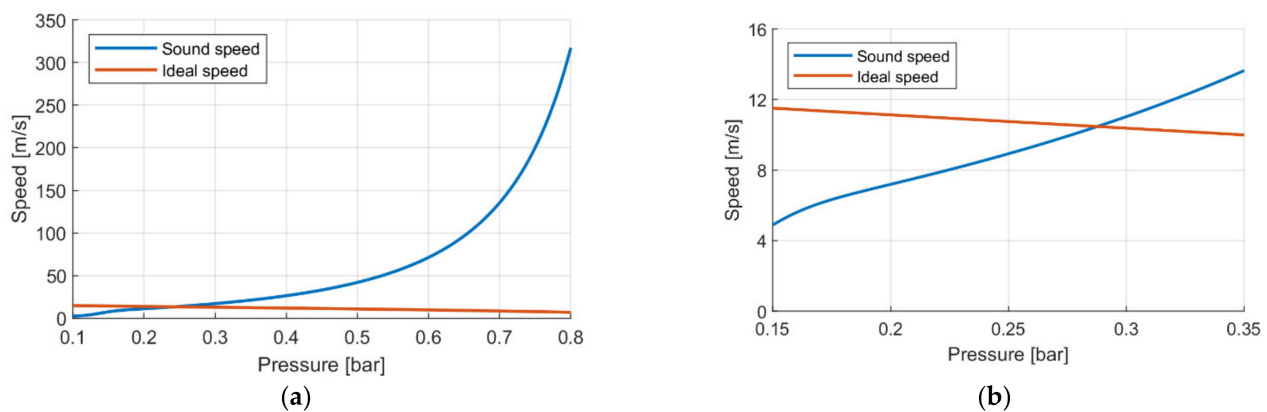


Figure 15. Comparison between ideal speed and speed of sound: (a) total upstream pressure of 1.05 bar; (b) intersection of the two curves for total upstream pressure of 0.75 bar.

7. Conclusions

This paper presents two models for predicting gaseous and vapor cavitation phenomena. One is based on a CFD approach and implemented in ANSYS[®] CFX in which an air release and absorption model is introduced, the other is a lumped parameter fluid model.

An experimental apparatus was realized to test cavitation in a hydraulic circuit where an orifice is placed on the inlet line of a pump, which serves to generate flow through the restriction.

The pressures measured by the sensors were used as boundary conditions in the simulations to obtain the measured mass flow rate through the orifice. The advantage of the CFD model is also to show where the gas phase is concentrated; this is fundamental, since the gaseous fractions represent a critical factor in the functionality of hydraulic systems. Once the CFD model was validated, the fluid dynamics simulations were necessary for the correct application of the lumped parameter model. The latter model also shows the need to correctly calculate the velocity of the fluid, not merely considering the ideal velocity but also comparing it with that of sound; otherwise, there is the possibility of overestimating the mass flow rate. The good level of correspondence with the experimental data shows the potential of both methodologies for the study of cavitation problems in hydraulic systems.

The outcome of this research will allow for the study of cavitation in hydraulic control valves or pumps through the proposed models.

Author Contributions: Conceptualization, P.C. and F.S.; methodology, P.C. and F.S.; simulations, F.S.; formal analysis, F.S.; writing—review and editing, P.C., F.S. and M.R.; supervision, P.C.; All authors have read and agreed to the published version of the manuscript.

Funding: This research received no external funding.

Institutional Review Board Statement: Not applicable.

Informed Consent Statement: Not applicable.

Data Availability Statement: The data presented in this study are available on request from the corresponding author. The data are not publicly available due to privacy reasons.

Acknowledgments: The authors would like to acknowledge Casappa S.p.A for the support for this publication.

Conflicts of Interest: The authors declare no conflict of interest.

Nomenclature

f	Mass fraction
ρ	Density
U	Velocity
R_B	Bubble radius (m)
σ	Surface tension (Pa)
p	Pressure (Pa)
\dot{m}_{fg}	Interphase mass transfer rate (kg/s)
B	Bulk modulus (Pa)
T	Temperature (K)
\tilde{R}_G	Universal gas constant
R	Mass rate
\tilde{m}	Oil vapor molecular mass (average)
p_T	Total pressure (Pa)
p_S	Static pressure (Pa)
x	Gas to liquid volume fraction
γ	Isentropic exponent
C_d	Orifice flow coefficient
c	Fluid velocity (m/s)
Subscript	
l	Liquid
g	Gas
v	Vapor
d	Desorption
a	Absorption
g,g	Gas released
g,l	Gas dissolved
o	Reference condition
SAT	Saturation condition

References

- Schnerr, G.H.; Sauer, J. Physical and numerical modelling of unsteady cavitation dynamics. In Proceedings of the 4th International Conference on Multiphase Flow, New Orleans, LA, USA, 27 May–June 2001.
- Zwart, P.; Belamri, T. A Two-Phase Flow Model for Predicting Cavitation Dynamics. In Proceedings of the 5th International Conference on Multiphase Flow, Yokohama, Japan, 30 May–4 June 2020.
- Singhal, A.K.; Athavale, M.M.; Li, H.Y.; Jiang, Y. Mathematical Basis and Validation of the Full Cavitation Model. *ASME J. Fluids Eng.* **2002**, *124*, 617–624. [[CrossRef](#)]
- Zhou, J.; Hu, J.; Jing, C. Lumped parameter modelling of cavitating orifice flow in hydraulic systems. *J. Mech. Eng.* **2016**, *6*, 373–380. [[CrossRef](#)]
- Zhou, J.; Vacca, A.; Manhartgruber, B. A Novel Approach for the Prediction of Dynamic Features of Air Release and Absorption in Hydraulic Oils. *J. Fluids Eng. Sep.* **2013**, *135*, 091305. [[CrossRef](#)]
- Shah, Y.; Vacca, A.; Dabiri, S. Air Release and Cavitation Modeling with a Lumped Parameter Approach Based on the Rayleigh–Plesset Equation: The Case of an External Gear Pump. *Energies* **2018**, *11*, 3472. [[CrossRef](#)]
- Shah, Y.G.; Vacca, A.; Dabiri, S.; Frosina, E. A fast lumped parameter approach for the prediction of both aeration and cavitation in gerotor pumps. *Meccanica* **2018**, *53*, 175–191. [[CrossRef](#)]
- Buono, D.; Schiano di Cola, F.D.; Senatore, A.; Frosina, E.; Buccilli, G.; Harrison, J. Modelling approach on a gerotor pump working in cavitation conditions. *Energy Procedia* **2016**. [[CrossRef](#)]
- Rundo, M.; Squarcini, R.; Furno, F. Modelling of a Variable Displacement Lubricating Pump with Air Dissolution Dynamics *SAEInt. J. Engines* **2018**, *11*. [[CrossRef](#)]
- Del Campo, D.; Castilla, R.; Raush, G.A.; Montero, P.J.G.; Cordina, E. Numerical Analysis of External Gear Pumps Including Cavitation. *J. Fluids Eng.* **2012**, *134*. [[CrossRef](#)]
- Casoli, P.; Scolari, F.; Rundo, M.; Lettini, A.; Rigosi, M. CFD Analyses of Textured Surfaces for Tribological Improvements in Hydraulic Pumps. *Energies* **2020**, *13*, 5799. [[CrossRef](#)]
- Casoli, P.; Vacca, A.; Franzoni, G.; Berta, G.L. Modelling of fluid properties in hydraulic positive displacement machines. *Simul. Model. Pract. Theory* **2006**, *14*, 1059–1072. [[CrossRef](#)]

-
13. Reid, R.; Prausnitz, J.; Poling, B. *Properties of Gases and Liquids*; McGraw-Hill Education: New York, NY, USA, 2001; ISBN 978-0070517998.
 14. Martelli, M.; Gessi, S.; Massarotti, G.; Marani, P.; Zarotti, L. On peculiar flow characteristics in hydraulic orifices. In Proceedings of the ASME/BATH 2017 Symposium on Fluid Power and Motion Control, Sarasota, FL, USA, 16–19 October 2017. [[CrossRef](#)]