

The Polito Surface Wave flat-file Database (PSWD): statistical properties of test results and some inter-method comparisons

Original

The Polito Surface Wave flat-file Database (PSWD): statistical properties of test results and some inter-method comparisons / Passeri, Federico; Comina, C.; Foti, S.; Socco, L. V.. - In: BULLETIN OF EARTHQUAKE ENGINEERING. - ISSN 1570-761X. - STAMPA. - (2021). [10.1007/s10518-021-01069-1]

Availability:

This version is available at: 11583/2884649 since: 2021-04-07T11:19:37Z

Publisher:

Springer Science and Business Media B.V.

Published

DOI:10.1007/s10518-021-01069-1

Terms of use:

This article is made available under terms and conditions as specified in the corresponding bibliographic description in the repository

Publisher copyright

(Article begins on next page)



The Polito Surface Wave flat-file Database (PSWD): statistical properties of test results and some inter-method comparisons

Federico Passeri¹ · Cesare Comina² · Sebastiano Foti¹ · Laura Valentina Socco³

Received: 20 February 2020 / Accepted: 22 February 2021
© The Author(s) 2021

Abstract

The compilation and maintenance of experimental databases are of crucial importance in all research fields, allowing for researchers to develop and test new methodologies. In this work, we present a flat-file database of experimental dispersion curves and shear wave velocity profiles, mainly from active surface wave testing, but including also data from passive surface wave testing and invasive methods. The Polito Surface Wave flat-file Database (PSWD) is a gathering of experimental measurements collected within the past 25 years at different Italian sites. Discussion on the database content is reported in this paper to evaluate some statistical properties of surface wave test results. Comparisons with other methods for shear wave velocity measurements are also considered. The main novelty of this work is the homogeneity of the PSWD in terms of processing and interpretation methods. A common processing strategy and a new inversion approach were applied to all the data in the PSWD to guarantee consistency. The PSWD can be useful for further correlation studies and is made available as a reference benchmark for the validation and verification of novel interpretation procedures by other researchers.

Keywords Database · Geophysics · Surface Waves · Site Response · Geotechnical Earthquake Engineering

1 Introduction

The compilation and maintenance of databases, in conjunction with big-data management methodologies, allow for relevant advances in research. Databases treatment and processing are indeed gaining increasing importance in modern probabilistic methodologies. The availability of databases is beneficial for the evaluation of statistical properties and for the

✉ Federico Passeri
federico.passeri@polito.it

¹ DISEG, Politecnico di Torino, Turin, Italy

² DST, Università degli Studi di Torino, Turin, Italy

³ DIATI, Politecnico di Torino, Turin, Italy

development of empirical correlations. In addition, reliable databases provide reference benchmarks for validation and verification purposes.

Strong motion databases are common in applied seismology and geotechnical earthquake engineering (e.g. Chiou et al. 2008; Ptilakis et al. 2013; Ancheta et al. 2014). However, there are only few examples of databases dedicated to site characterization for seismic hazard analyses. Stewart et al. (2014a) pointed out the necessity of reliable databases for the definition of new statistical models for modulus reduction and damping curves. In addition, the authors recommended the compilation of well-documented and accessible databases of shear wave velocity (V_S) profiles to investigate their statistical properties within seismic ground response studies. Moreover, these databases would be also useful to study the reliability of geophysical methods for V_S determination. The scientific literature includes some examples of such databases.

EPRI (1993) presented stochastic analyses on a database of over 350 V_S profiles (mainly from sites in the United States) to develop guidelines for site investigations. Later, Toro (1995) compiled a database for the development of a geostatistical model for the management of uncertainties in V_S profiles, using the PEA (Pacific Earthquake Analysis) database, with 745 V_S profiles (including the ones of EPRI (1993) database). Only V_S profiles that were measured in situ (i.e. 557) were included in the final data collection and were also partially used in a study by Wills et al. (2000). These V_S profiles were also classified according to GeoMatrix (Chiou et al. 2008) and to the thirty-meter harmonic shear wave velocity ($V_{S,30}$) proxies.

Moss (2008) and Comina et al. (2011) presented analyses for the quantification of measurement uncertainty propagated on the $V_{S,30}$, but their databases were limited in size. Stewart et al. (2014b) proposed a database compiled for Greece collecting information in the open literature, research reports, professional engineering reports and personal communications. Each site in this database had geophysical measurements and was categorized according to typical classification proxies, as discussed by Toro (1995). The main scope was a method for the extrapolation of $V_{S,z}$ (harmonic average shear-wave velocity profile down to depth z) to $V_{S,30}$ in case of lack of experimental data at increasing depths.

More recently, Sadiq et al. (2018) and Ahdi et al. (2018) compiled V_S databases following similar examples presented over the last few years (Kayen et al. 2004; Ahdi et al. 2017). The main goal of these works was to share information worldwide with the technical and scientific communities. Another V_S database is presented in Aimar et al. (2019) to validate simplified approaches included in the Italian building code (NTC 2018) for the soil class amplification factors. In this case, the authors also extended their database with additional synthetic profiles generated with a geostatistical model (Passeri et al. 2020).

The above-mentioned databases are affected by some limitations. First, most of the databases do not include specific information and details on processing and interpretation methods of the experimental data. In some of them, empirical correlations with other geotechnical tests were used for V_S profiles determination. Therefore, these databases cannot be used to assess the statistical properties of the results for each specific seismic method. Second, most of the databases contain a limited number of profiles: the larger databases present a substantial spatial variability between the sites (e.g. ranging from California to Italy) and only in few situations sites are grouped by distance or other proxies. Third, some of the databases include profiles with very limited investigation depths.

For inter-method comparisons between invasive and non-invasive methods, the former (e.g. down-hole DH, cross-hole CH, suspension logging, seismic cone SCPT, seismic dilatometer SDMT) are usually assumed as the ground truth. Boore and Brown (1998) performed some comparisons also looking at the dynamic response of the sites in terms

of surface-to-bedrock theoretical transfer functions (TTFs). They reported an underestimation of V_S for shallow layers and an overestimation for deep layers by surface wave tests with respect to invasive tests. The different investigated volumes among the methods were claimed as a possible motivation for the observed differences. Later, Brown et al. (2002) considered ten examples of inter-method comparisons showing large inter-method differences only where considerable lateral variability was present at the sites. For laterally homogeneous sites, lower velocity values (around 15%) by surface wave tests than by invasive tests were observed close to the surface. Nowadays, it is accepted that also invasive tests are subjected to a non-negligible uncertainty, particularly for shallow depths (Garofalo et al. 2016b). Several inter-method studies showed that the agreement between the results is good if both invasive and non-invasive tests are conducted and interpreted using state of the art methods (Foti et al. 2011; Kim et al. 2013; Piatti et al. 2013b; Cox et al. 2014; Garofalo et al. 2016a; Garofalo et al. 2016b).

The modeling of uncertainties for a specific seismic method require their identification, quantification, and management (Passeri 2019) and a neat separation (if possible) of uncertainty sources (i.e. epistemic uncertainties and aleatory variabilities). From the surface wave test perspective, uncertainties are mainly associated to the acquisition and inversion of the Experimental Dispersion Curve (EDC) (Foti et al. 2019). Uncertainties of the EDC can be estimated with repeated acquisitions and/or numerical simulations. For the SASW (Spectral Analysis of Surface Waves) method, Marosi and Hiltunen (2004) showed experimental values of the V_R (Rayleigh wave phase velocity) Coefficient of Variation (COV_{V_R}) typically around 1.5%. They also found that V_R values were normally (i.e. Gaussian) distributed for frequencies in the 20–150 Hz range. O'Neill (2004) analyzed numerical simulations and experimental results showing that the COV_{V_R} increases nonlinearly for decreasing frequencies (i.e. from 1% to around 30%) and proposed a Lorentzian distribution for the low-frequency band. According to Lai et al. (2005), the EDC could be subdivided in a low-frequency zone with high uncertainties and a high-frequency zone with low uncertainties, as a result of the natural loss of resolution of the Rayleigh waves with depth and of the experimental challenges for low-frequency waves generation. They also confirmed the normal distribution of V_R . More recently, Olafsdottir et al. (2018) confirmed the hypothesis of V_R normal distribution with a dataset in Iceland using the probabilistic theories illustrated by Shapiro and Wilk (1965) and Ross (2014).

The EDC uncertainties are then propagated to V_S models in the solution of the surface wave inverse problem. Given the inverse problem ill-posedness and the consequent solution non-uniqueness, several different V_S profiles can honor equally well the EDC. It is possible therefore to identify a set of V_S profiles which are intrinsically equivalent, i.e. their associated misfit is small if compared to the EDC uncertainties. The analyses of equivalent V_S profiles is usually undertaken by global search inversion methods with inferential statistical tests (e.g. Socco and Boiero 2008).

In this framework, this paper presents a flat-file database compiled for the assessment of statistical properties of surface wave tests (mostly active) at different sites: the Polito Surface Wave flat-file Database (PSWD). The flat-file database also includes passive surface wave data and experimental results from invasive methods at several sites, for inter-method comparison. The general characteristics of the PSWD are herein presented and discussed. The main novelty of the PSWD is its homogeneity and consistency in terms of processing and interpretation methods. Specifically, a common processing strategy and a consistent inversion approach were applied to guarantee the statistical reliability of the results. This approach is novel with respect to available databases and allow for statistical analyses also with respect to the comparisons with invasive tests, when available. The PSWD is publicly

available as an electronic supplement to this paper for validation and/or verification benchmark studies.

2 Polito Surface Wave flat-file Database (PSWD)

The primary attention of the Polito Surface Wave flat-file Database (PSWD) is devoted to surface wave tests (mostly active), however the database structure is flexible and allows for the storage of further information, including results of additional geophysical tests (for inter-method comparisons) and/or geotechnical tests (for correlation studies). The PSWD was compiled with surface wave tests performed by Politecnico di Torino (sometimes in collaboration with Università di Torino) in the last 25 years. For each site, a representative EDC was obtained following state of the art processing approaches, homogeneous through the years (Foti et al. 2007). When possible, a quantification of experimental uncertainties was also performed.

The ill-posedness of the surface wave inverse problem, which causes the non-uniqueness of the solution, was investigated through a specific statistical sampling of the model parameters space. The EDCs collected over this wide time interval were indeed systematically reinterpreted adopting a two-step inversion procedure (Passeri 2019) with an improved Monte Carlo inversion algorithm (Socco and Boiero 2008). In both steps, layer thicknesses, number of layers, shear wave velocities and the Poisson's ratios were assumed as random variables of the problem. This inversion methodology led, for each site, to a homogeneous set of equivalent solutions. This set was determined after the application of a one-tail statistical test (Socco and Boiero 2008) on the inversion results, propagating the experimental uncertainties into the V_S profiles. As a consequence, the V_S profiles in the database may be slightly different than those reported in the literature for the same sites.

The PSWD is distributed as an electronic supplement of this paper. For each site the data shared in the electronic supplement include the EDC (with experimental uncertainties, when available), the best fit (i.e. lowest misfit) V_S profile from surface wave tests and the V_S profile from invasive tests (when available). Note that the data shared in the open-access version of the flat-file database only include the lowest-misfit solution. The entire statistical sample of equivalent profiles is stored in the private version of the database and can be made available upon request. Hereafter further details on the experimental information, processing approach and inversion procedure are presented.

2.1 Experimental information and processing approach

Seventy-one Italian sites are included in the PSWD version discussed in this paper (Fig. 1). Surface wave tests provided only the fundamental mode of the EDC for these sites. The geographic location of these fundamental-mode sites is shown in Fig. 1, where each point has a specific color that will be consistently used during the entire paper. The higher densities of sites are in Central (i.e. Abruzzo and Marche regions), Northeast (i.e. Friuli region), and Northwest (i.e. Piedmont region) Italy. Figure 1 also shows a zoom of the Central Italy area that was struck by the L'Aquila earthquake in 2009 (Monaco et al. 2012) and by the Central Italy 2016 seismic sequence (Stewart et al. 2018). This area was widely characterized during the seismic microzonation projects led by the Italian Civil Protection Department (Hailemichael et al. 2020).

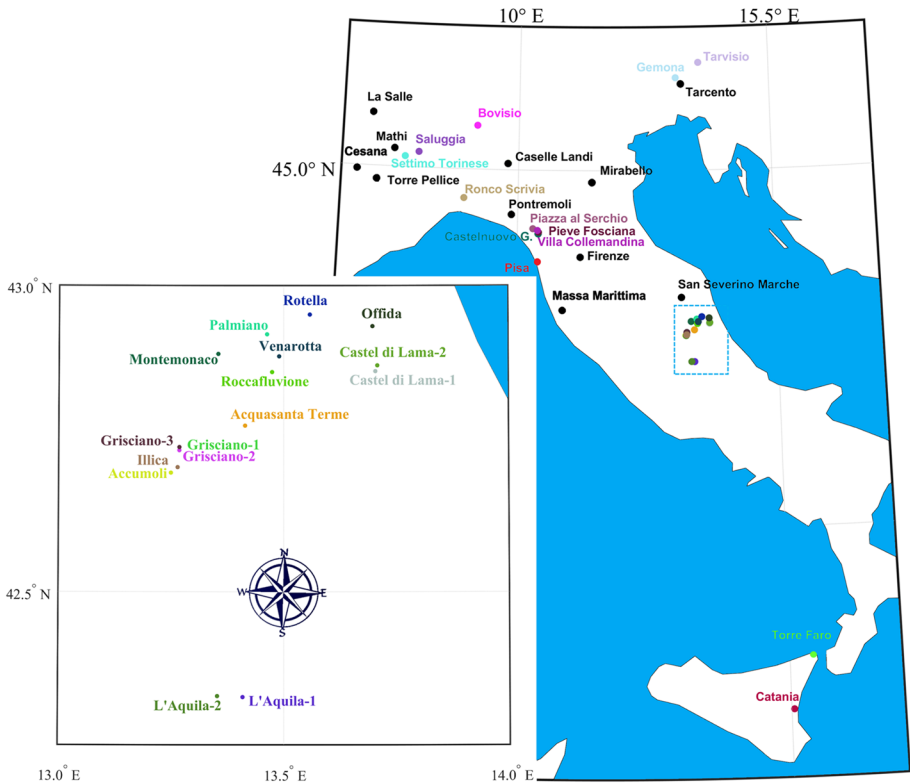


Fig. 1 Spatial distribution of the fundamental-mode sites included in the PSDW and zoom on Central Italy with the highest density of sites (the colors are consistent within the entire paper, except for the areas with multiple sites that are marked with a single black dot)

Table 1 contains general information about the sites with respect to: their geographical location, the surface wave tests setup, the properties of the EDCs and the presence of independent invasive tests (available for forty-four sites). Active surface wave data were acquired for all sites using a linear array of receivers, whose characteristics are also reported in Table 1, in the usual Multichannel Analysis of Surface Waves (MASW) approach. For seventeen sites also passive surface wave data were acquired with a 2D circular array of receivers, whose dimensions are also indicated in Table 1. The corresponding geographical location for each site represents the location around which both active and passive surveys were deployed. Each site represents therefore a single measuring point for which multiple active data acquisitions along the same line (usually not less than 10 shots) and multiple passive data recordings were performed. Literature references about the sites, containing more details on the performed surveys and on the adopted processing technique for EDC extraction are also included, when available. In these references also further details on the geological setting of the sites can be obtained to allow for eventual physical explanations of the resulting V_s profiles, based on the geology of the sites. The attended geological setting at the sites is also briefly resumed in the electronic supplement. More geological information can be obtained from available geological maps near the geographical locations of the sites (see www.isprambien

Table 1 Fundamental-mode sites included in the PSWD

ID	Site information			Surface wave tests				Ground-water table (m)	Invasive tests			References			
	Location (name)	Latitude (°)	Longitude (°)	Test setup		EDC			DH	CH	SDMT		Investigation depth (m)		
				Active Length (m)	Spacing (m)	Passive Array aperture (m)	Phase velocity dev							Maximum wave-length (m)	Minimum wave-length (m)
1	Accumoli	42.694	13.249	46	2	–	–	–	yes	yes	50				
2	Acquasanta Terme	42.771	13.414	34.5	1.5	–	–	–	yes	yes	50				
3	Bovisio	45.609	9.169	23.5	0.5	–	–	–	yes	20	2	–	Bonalumi et al. (2011)		
4	Caselle Landi-1	45.091	9.795	46	2	–	–	3	–	70	5	–	Comina et al. (2004)		
5	Caselle Landi-2	45.091	9.795	69	3	–	–	2.5	–	47	3	–	Strobbia and Foti (2006)		
6	Caselle Landi-3	45.091	9.795	92	4	–	–	2.5	–	61	3	–	Comina et al. (2004)		
7	Caselle Landi-4	45.087	9.790	69	3	–	–	2.5	–	102	3	–			
8	Castel di Lama-1	42.860	13.704	35	1	–	–	–	yes	49	3	–	yes	40	
9	Castel di Lama-2	42.870	13.708	70	2	–	–	–	yes	83	6	–	yes	50	
10	Catania	37.447	15.046	70.5	1.5	50	–	–	yes	105	2	–	yes	40	Foti et al. (2011)
11	Cesana-1	44.954	6.811	46	2	–	–	–	–	38	9	–	–	–	

Table 1 (continued)

ID	Site information			Surface wave tests				Ground-water table (m)	Invasive tests			References	
	Location (name)	Latitude (°)	Longitude (°)	Test setup		EDC			DH	CH	SDMT		Investigation depth (m)
				Active	Passive	Phase velocity dev	Maximum wave-length (m)						
				Length (m)	Spacing (m)	Array aperture (m)							
12	Cesana-2	44.953	6.809	46	2	—	—	42	3	—	—	—	
13	Castelnuovo Garfagnana	44.123	10.409	46	2	—	—	73	2	—	—	Calosi et al. (2001)	
14	Firenze-1	43.773	11.256	46	2	—	—	72	3	6	—	—	
15	Firenze-2	43.769	11.257	35	1.5	—	—	45	7	6	—	—	
16	Firenze-3	43.793	11.226	46	2	—	—	58	3	6	—	Lai et al. (2005)	
17	Gemona	46.292	13.123	141	3	—	—	73	8	—	—	Piatti et al. (2013a)	
18	Grisciano-1	42.731	13.269	47	1	—	—	124	3	2.5	—	yes	
19	Grisciano-2	42.730	13.268	94	2	—	—	89	3	4	—	yes	
20	Grisciano-3	42.736	13.268	94	2	—	—	63	5	10	—	yes	
21	Illica	42.703	13.264	35	1	—	—	55	3	4	—	yes	
22	La Salle-1	45.740	7.070	70.5	1.5	75	—	427	4	>40	—	yes	
23	La Salle-2	45.747	7.073	34.5	1.5	30	—	351	3	>40	—	yes	
24	La Salle-3	45.746	7.078	34.5	1.5	75	—	444	2	>40	—	yes	
25	La Salle-4	45.744	7.074	46	2	40	—	347	2	>40	—	yes	

Table 1 (continued)

ID	Site information			Surface wave tests				Ground-water table (m)	Invasive tests			References	
	Location (name)	Latitude (°)	Longitude (°)	Test setup		EDC			DH	CH	SDMT		Investigation depth (m)
				Active Length (m)	Spacing (m)	Passive Array aperture (m)	Phase velocity dev						
26	La Salle-5	45.743	7.078	70.5	1.5	75	yes	123	6	yes	yes	50	Comina et al. (2011)
27	L'Aquila-1	42.328	13.409	47	1	50	yes	110	1	yes	yes	30	
28	L'Aquila-2	42.330	13.353	70.5	1.5	50	yes	92	2	yes	yes	30	Comina and Foti 2007
29	Massa Marittima-1	43.050	10.888	34.5	1.5	—	—	49	3	—	—	—	
30	Massa Marittima-2	43.050	10.888	46	2	—	—	49	2	—	—	—	
31	Mathi-1	45.255	7.536	47	2	20	—	201	2	—	—	—	
32	Mathi-2	45.255	7.536	23	1	—	—	79	3	—	—	—	
33	Mirabello-1	44.836	11.449	47	1	—	yes	35	2	3.5	yes	10	Passeri et al. (2018)
34	Mirabello-2	44.836	11.449	47	1	—	yes	38	2	3.5	yes	10	
35	Mirabello-3	44.836	11.449	47	1	—	yes	42	2	3.5	yes	20	
36	Montemarnaco	42.888	13.354	105	3	—	yes	43	4	—	yes	35	
37	Offida	42.934	13.698	70	2	—	yes	101	4	—	yes	40	
38	Palmiano	42.920	13.463	23	1	—	yes	55	4	—	—	—	

Table 1 (continued)

ID	Site information			Surface wave tests				Ground-water table (m)	Invasive tests			References	
	Location (name)	Latitude (°)	Longitude (°)	Test setup		EDC			DH	CH	SDMT		Investigation depth (m)
				Active Length (m)	Spacing (m)	Passive Array aperture (m)	Phase velocity dev						
39	Piazza al Serchio	44.185	10.300	34.5	1.5	—	—	—	yes	—	40		
40	Pieve Fosciana	44.135	10.411	69	3	—	—	—	yes	—	50		
41	Pisa	43.723	10.397	57.5	2.5	40	yes	87	yes	5	66	Foti (2003)	
42	Pontremoli-1	44.371	9.881	46	2	—	yes	64	yes	1	30		
43	Pontremoli-2	44.386	9.886	46	2	—	—	39	yes	3	15	Foti et al. (2003)	
44	Pontremoli-3	44.374	9.881	46	2	—	—	79	yes	6	20		
45	Pontremoli-4	44.378	9.875	46	2	—	—	68	yes	5	25		
46	Roccafluvione	42.859	13.474	70	2	—	yes	103	—	5	34		
47	Rotella	42.953	13.558	105	3	—	yes	114	yes	6	34		
48	Ronco Scrivia	44.595	8.936	23.5	0.5	—	—	18	—	1	—	Foti et al. (2011)	
49	Saluggia	45.216	8.020	69	3	—	yes	75	yes	3	100	Comina et al. (2011)	

Table 1 (continued)

ID	Site information			Surface wave tests				Ground-water table (m)	Invasive tests			References	
	Location (name)	Latitude (°)	Longitude (°)	Test setup		EDC			DH	CH	SDMT		Investigation depth (m)
				Active Length (m)	Spacing (m)	Passive Array aperture (m)	Phase velocity dev						
50	San Severino Marche-1	43.226	13.176	35	1	—	yes	48	19	—	—	—	
51	San Severino Marche-2	43.226	13.176	45	1.5	—	yes	84	5	—	—	—	
52	Settimo Torinese	45.148	7.751	70.5	1.5	—	yes	90	4	—	—	—	
53	Tarcento-1	46.215	13.205	47	1	—	yes	49	7	14	45	Piatti et al. (2013b)	
54	Tarcento-2	46.215	13.211	47	1	60	yes	43	5	11	45	—	
55	Tarcento-3	46.217	13.215	47	1	60	yes	47	4	15	45	—	
56	Tarcento-4	46.216	13.224	47	1	—	yes	71	3	6	11	—	
57	Tarcento-5	46.211	13.207	47	1	—	yes	72	6	20	—	—	
58	Tarcento-6	46.213	13.211	47	1	—	yes	59	3	15	45	—	
59	Tarcento-7	46.213	13.216	47	1	—	yes	14	3	17	24	—	
60	Tarcento-8	46.214	13.219	47	1	—	yes	35	4	15	24	—	
61	Tarcento-9	46.211	13.216	47	1	60	yes	77	3	20	—	—	
62	Tarcento-10	46.212	13.219	47	1	60	yes	87	6	13	24	—	
63	Tarcento-11	46.209	13.220	47	1	—	yes	89	5	12	24	—	
64	Tarcento-12	46.203	13.226	47	1	—	yes	12	4	6	—	—	

Table 1 (continued)

ID	Site information			Surface wave tests				Ground-water table (m)	Invasive tests			References	
	Location (name)	Latitude (°)	Longitude (°)	Test setup		EDC			DH	CH	SDMT		Investigation depth (m)
		Active	Length (m)	Spacing (m)	Passive Array aperture (m)	Phase velocity dev	Maximum wave-length (m)						
65	Torre Pellice-1	44.817	7.220	46	2	80	yes	114	6	6	30	Socco and Comina (2017)	
66	Torre Pellice-2	44.821	7.220	46	2	60		44	3	3	50		
67	Torre Pellice-3	44.820	7.204	46	2	–		46	5	5	–	Socco et al. (2009)	
68	Torre Pellice-4	44.818	7.204	46	2	–		55	4	4	–		
69	Torre Faro	38.264	15.634	40.25	1.75	–		25	2	2	–	Foti et al. (2011)	
70	Venarotta	42.884	13.490	43.5	1.5	–		41	4	4	34		
71	Tarvisio	46.500	13.584	70.5	1.5	22		197	1	1	9	Bonetto et al., 2015	

te.gov.it/Media/carg) and further specific geological information can be made available upon request.

For all the tests a homogeneous processing procedure was adopted. Both active and passive data were processed through a frequency-wavenumber (f-k) transform of seismic records. For active data the code SWAT (Surface Wave Analysis Tool), developed in MATLAB® environment (Matlab 2018) at Politecnico di Torino, was used. For passive data a beamforming technique (Zywicki 1999) was adopted. The EDC was estimated by automatic picking of energy maxima in the f-k image within a preselected high energy area. This allows to obtain the pair of f-k parameters associated to the propagation of the Rayleigh waves. When active and passive tests were available at a site the information of the two surveys were merged (e.g. Foti et al. 2007).

Forty-nine of the sites have also an experimental evaluation of the Rayleigh velocity standard deviation (σ_{V_R}). This evaluation was obtained by processing several acquisitions along the same survey line or passive data recording. This procedure allows for the evaluation of uncertainties related to background non-stationary noise but other effects, such as errors in the geometry, cannot be assessed. Therefore, the measured uncertainty is a partial estimate of the overall one.

Figure 2 shows the experimental wavelengths (λ) associated with the EDCs at each site (the IDs reported in the first column of Table 1 identify the sites). Given the link between maximum wavelength and penetration depth of surface waves, Fig. 2 offers a direct information on the depth of investigation obtainable at the different sites. Most wavelength intervals range from 2–3 m to 50–60 m. However, several of experimental measurements cover a wider wavelength band (from 1 to 100 m). Few EDCs (most significantly at La Salle, Mathi and Tarvisio sites, see Fig. 2) show experimental wavelengths above 100 m, thanks to the use of passive surveys. Within the PSWD the only constraint to limit the wavelength validity domain of the EDCs was related to the lowest frequency limit at which the EDCs were evaluated. This was established as a function of the geophone natural frequencies (i.e. 4.5 Hz for active data and 2 Hz for passive data). No other criteria with respect to the array length or aperture were used since several

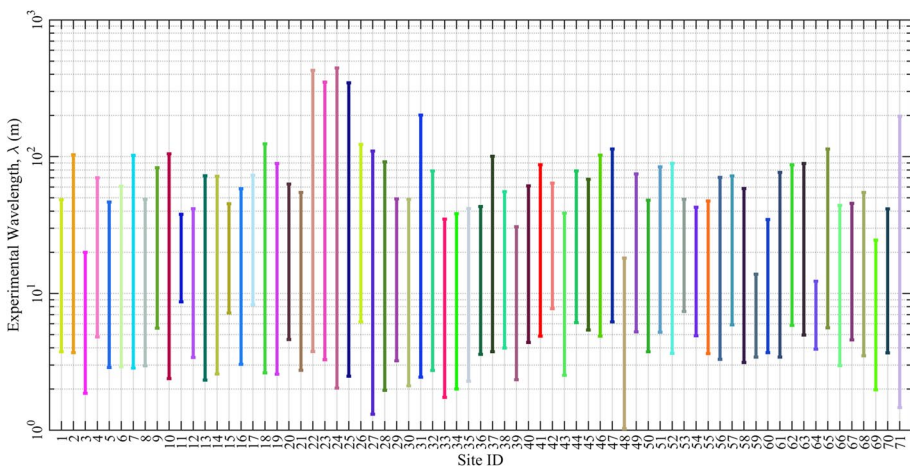


Fig. 2 Experimental wavelengths associated with each experimental dispersion curve (EDC) of the fundamental-mode sites included in the PSWD

different ranges are proposed in literature and a unique criterion is still not available (e.g. Cornou et al. 2006).

2.2 Inversion procedure and shear wave velocity profiles

The inversion of the EDCs in the PSWD followed a two-step process (Passeri 2019). First, the inversion was performed with a fixed number of layers and 2×10^5 trial models. This inversion aimed at producing a preliminary population of solutions and at reducing the size of the model space for the second step. However, a complete statistical sample of solutions can be obtained only if also the number of layers is allowed to vary in the inversion process (Cox and Teague 2016). Therefore, a further randomization for the second inversion step was implemented with 2×10^5 additional trial models, considering also the number of layers as a random variable. The assumption of the Poisson’s ratio (ν) variability (together with layer thicknesses, number of layers and shear wave velocities) in both inversion steps is a further strength of the methodology, compared to usual approaches that assume a-priori values for this parameter. The only a-priori assumption in the inversion was related to the layers densities, which were estimated from available information on the site, given the limited sensitivity of EDC to density variations. From the final population of solutions, the equivalent profiles (i.e. V_s profiles that equally fit the EDC) were determined after the application of a one-tail statistical test (Socco and Boiero 2008). The reader can refer to Passeri (2019) for further details on the proposed inversion methodology.

Examples of the inversion results are reported in Figs. 3, 4 for La Salle-1 (ID 22) and Torre Pellice-1 (ID 65) sites, respectively. These two sites show different characteristics

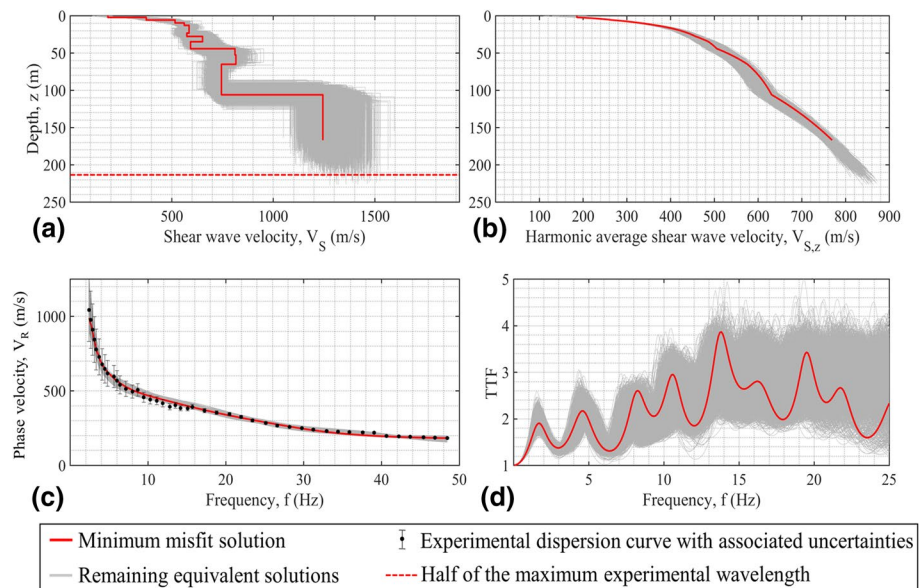


Fig. 3 Results of the inversion for La Salle-1 site (ID 22) in terms of equivalent solutions, in grey, and minimum misfit solution (i.e. the solution provided in the flat-file database), in red: **a** interval velocity profiles; **b** harmonic average velocity profiles; **c** experimental (black dots) and equivalent theoretical dispersion curves; and **d** theoretical surface-to-bedrock transfer functions (TTFs)

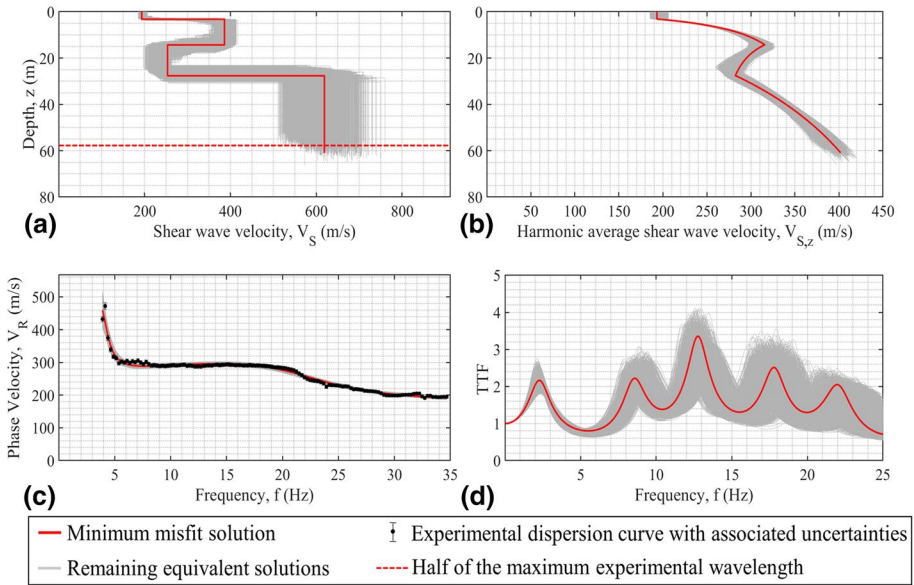


Fig. 4 Results of the inversions for Torre Pellice-1 site (ID 65) in terms of equivalent solutions, in grey, and minimum misfit solution (i.e. the solution provided in the flat-file database), in red: **a** interval velocity profiles; **b** harmonic average velocity profiles; **c** experimental (black dots) and equivalent theoretical dispersion curves; and **d** theoretical surface-to-bedrock transfer functions (TTFs)

in terms of geological and mechanical properties of the subsurface. La Salle-1 site lays on a wide alluvial fan, mainly composed by alluvial Quaternary deposits, medium to coarse grain sized, with a thickness of around 100 m, over compact glacial deposits. These characteristics were confirmed by stratigraphic logs, till 50 m depth, reporting the typical chaotic sequence of gravely soils of alpine alluvial fans, with absence of a properly layered structure. At the Torre Pellice-1 site, a velocity inversion is expected in the shallowest 30 m. This is caused by the presence of a shallow formation of fluvial sediments over softer lacustrine sediments. The thickness of the upper fluvial sediments is expected to be variable between 10 and 50 m. The bedrock is likely located at more than 100 m depth in the central part of the valley. However, it is shallower on the lateral valley portions where tests were performed.

The examples reported in Fig. 3, 4 show the equivalent interval velocity V_S profiles (Fig. 3a, 4a) and the equivalent harmonic average $V_{S,z}$ profiles (Fig. 3b and Fig. 4b), in grey. The $V_{S,z}$ was calculated for each profile with the formula:

$$V_{S,z} = \frac{\sum_n h_i}{\sum_n \frac{h_i}{V_{S,i}}} \tag{1}$$

where n is the number of layers down to the depth z , h_i is the thickness of the i th layer and $V_{S,i}$ is its shear wave velocity. The solution with the lowest misfit (i.e. the solution reported in the database) is also reported, in red, both in terms of V_S profiles (Figs. 3a, 4a) and $V_{S,z}$ profiles (Figs. 3b, 4b). The misfit (M) was calculated, following Socco and Boiero 2008 and Wathelet et al. 2004, with the formula:

$$M = \frac{\sum_n (V_{ti} - V_{ei})^2 \sigma_{ei}^{-2}}{l - (2n - 1)} \quad (2)$$

where V_{ti} and V_{ei} are respectively the theoretical and the experimental phase velocities, σ_{ei} are the experimental uncertainties, l is the number of data points in the EDC and n is the number of layers of the profile.

It can be observed an extremely limited variability in V_S and $V_{S,z}$ at shallow depths for both sites. This is typical when performing global inversion strategies over surface wave data and it is related to the reduced uncertainty of the EDC in the higher frequency range and on to the sensitivity of the EDC to the properties of the shallow layers, resulting in a well constrained inversion in the shallower portion of the profile. At greater depths the relatively high V_S variability strongly reduces in terms of $V_{S,z}$ profiles (Socco et al. 2015). Note that the dynamic response of a deposit is highly dependent on the $V_{S,z}$ (Kramer 1996), therefore the comparison should always be conducted in terms of $V_{S,z}$ (Passeri et al. 2020). In addition, the $V_{S,z}$ profile provides initial information about the investigated site if compared to the experimental dispersion curve (Socco et al. 2017; Passeri 2019).

The comparison of the EDC with the theoretical dispersion curves of the equivalent profiles is reported in Fig. 3c and Fig. 4c, where consistency between the experimental and the theoretical site signatures can be observed. Finally, the one-dimensional, linear Theoretical Transfer Functions (TTFs) are reported (Fig. 3d and Fig. 4d). They confirm that the geophysical equivalence in the V_R - f and $V_{S,z}$ - z spaces implies the equivalence in terms of the dynamic response of the deposit. Indeed at least the first two resonance peaks (which are also the most relevant for seismic response evaluations) are very consistent among the whole set of equivalent solutions, coherently with similar findings in the literature (Foti et al. 2009; Comina et al. 2011; Griffiths et al. 2016; Teague and Cox 2016; Teague et al. 2018; Passeri et al. 2019a). The higher resonance frequencies are more dispersed in the case of La Salle-1 site (Fig. 3d) because of the complex stratigraphy in the shallow layers which makes more relevant the role of uncertainty in the determination of layer boundaries.

A summary of the inversion results in terms of minimum achieved misfit (M_{\min}) and number of accepted equivalent profiles is reported in the electronic supplement of the paper for all the sites. Note that the solutions included in the PSDW can be slightly different from the ones previously proposed in the literature (see the last column of Table 1 for references). This is due to the new two-step inversion process that was systematically adopted for the entire flat-file database. However, there is a general accordance between the two interpretations. Note also that the statistical significance of the resulting number of equivalent profiles is adequate for most of the sites, indicating that the solution space was consistently sampled with the proposed inversion approach.

3 Statistical analysis of test results

The study of uncertainties and variabilities (Budnitz et al. 1997) is nowadays crucial for statistical analyses performed within a probabilistic framework (Bommer 2003). Hereafter, first the uncertainties and variabilities in the EDCs of the PSDW are discussed. Then, their influence on the solution is presented. Finally, shear wave velocity proxies from EDC are evaluated, discussed and validated.

3.1 Uncertainties in the EDC

An identification and quantification of uncertainties associated with the EDC is not straightforward. Indeed, the influence of different uncertainty sources converges into the EDC and a precise distinction between them is most often unfeasible (Teague and Cox 2016; Passeri et al. 2019a). For this reason, the uncertainties in the EDCs are usually jointly modelled via the overall COV_{V_R} as a function of frequency (Lai et al. 2005; Foti et al. 2014). However, the experimental evaluation of COV_{V_R} is often prevented in standard applications, as a statistical population of test repetitions (i.e. multiple shots at different locations) is not always available (Foti et al. 2018). Therefore, a single-deterministic EDC is often obtained and used for the inversion. Each sampled frequency is then associated to a single, deterministic V_R value, with no information on uncertainties and variabilities in the measurements (Foti et al. 2019). Hereafter, we propose a formulation for the estimate of uncertainties and variabilities in the EDC when multiple measurements are not available. Note that the uncertainties in the EDC are always relevant as they are propagated in the surface wave inverse problem and therefore on the estimated shear wave velocity profiles.

Several possible functional forms were investigated to study the COV_{V_R} variability with frequency within the PSDW for the forty-nine sites having an experimental evaluation of COV_{V_R} (Passeri 2019). Also, the dependency of COV_{V_R} on wavelength, V_R and different combinations of these two parameters was studied (Passeri 2019). In addition, various mathematical formulations and fitting algorithms were compared. In the end, the COV_{V_R} was confirmed to be mainly dependent on frequency (f) as already recognized in literature (Marosi and Hiltunen 2004, O'Neill 2004, Lai et al. 2005, Olafsdottir et al. 2018).

A preliminary analysis of $COV_{V_R}(f)$ was obtained calculating the moving average and the standard deviation of all the experimental data (Fig. 5a). Each of the forty-nine sites contributed to this analysis with its EDC. The number of data points of each EDC is reported in the electronic supplement of the paper, the total number of available data points for the forty-nine sites is above 2600. This analysis suggests a $COV_{V_R} \cong 0.05$ at high frequencies, increasing up to 0.15–0.2 at low frequencies. These values are in agreement with other examples in the literature (Marosi and Hiltunen 2004; O'Neill 2004; Lai et al. 2005; Foti et al. 2009; Comina et al. 2011; Cox et al. 2014; Garofalo et al. 2016a; Garofalo et al. 2016b; Olafsdottir et al. 2018; Teague et al. 2018).

The functional form selected for the regression is a double exponential power law:

$$COV_{V_R}(f) = a_1 e^{a_2 f} + a_3 e^{a_4 f} \quad (3)$$

where a_i are the regression coefficients and f is the independent variable.

The fitting of the experimental COV_{V_R} was performed using the LAR (i.e. least absolute residuals) robust regression algorithm (Dumouchel and O'Brien 1992, Huber 2011) obtaining an adjusted R-square value equal to 0.98.

The proposed functional form has a finite value at $f=0$ Hz ($COV_{V_R}=0.3=a_1+a_3$) and a slight increase of COV_{V_R} for high frequencies (Fig. 5b). Indeed, the increased uncertainty of surface wave tests is associated both to very low frequencies (due to the lack of penetration at large depths and near-field effects) and to very high frequencies (due to local small scale heterogeneities, spatial aliasing and attenuation). The minimum $COV_{V_R} \cong 0.03$ is obtained for frequencies between 15 and 35 Hz, where almost any array setup usually provides reliable results. The values of the fitting parameters are reported in Fig. 5b along with an additional set of parameters provided to obtain a conservative estimate, i.e. an upper bound, to be used in case of low confidence in the experimental data (dashed red line in

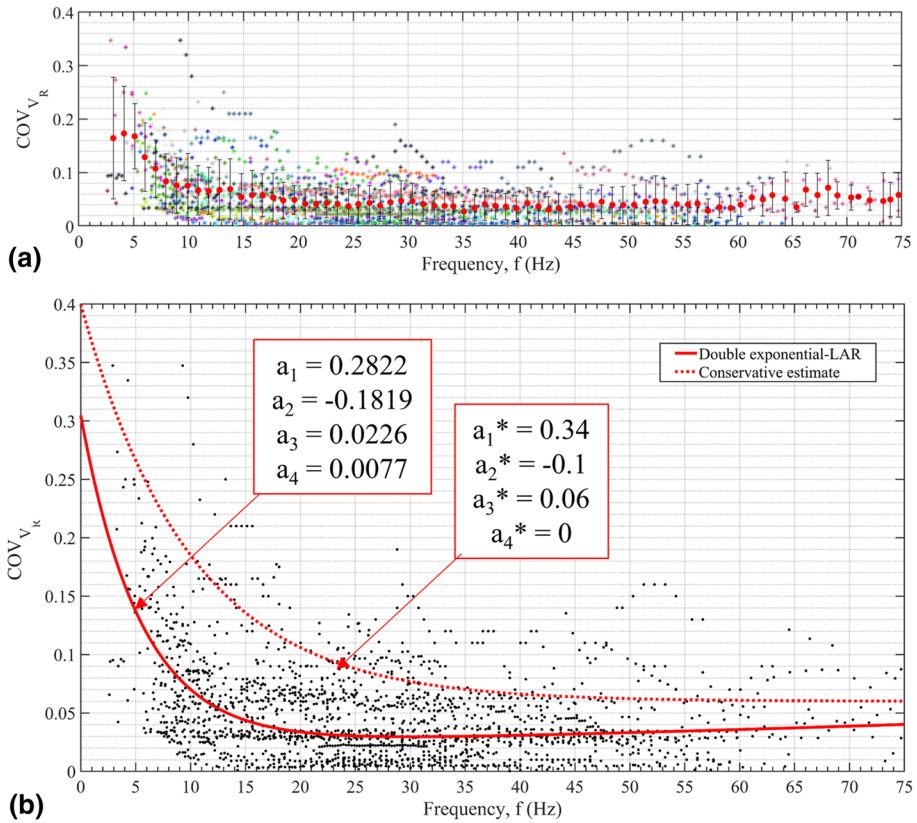


Fig. 5 Variation (COV) of the Rayleigh wave velocity as a function of frequency: **a** entire set of experimental values along with the calculated moving average; **b** selected best fitting model and suggested precautionary choice with related parameters

Fig. 5b). This upper bound is obtained as the 10th percentile (i.e. 10% of the experimental values are above the fitting line).

Note that the fitting is valid in the frequency range in which the regression was formulated (i.e. from about 2.5 to up to 75 Hz). The formulation should be adopted with caution outside this range. Also, note that the suggested relationship regards only the uncertainties for the fundamental mode of the EDC. Further analyses are needed for an estimation of the uncertainties associated with higher modes in the EDCs.

3.2 Statistical properties of the solutions

Through the EDC inversion, a set of equivalent solutions for each site was obtained. These results can be processed using a systematic statistical inference method (Ang and Tang 1984). The inferential analysis allows for the determination of the main statistical properties of the solutions.

Figure 6a shows, for each site in the PSWD, the mean $\bar{V}_{S,z}$ of all the equivalent profiles as a function of depth z , up to the depth with a minimum of fifty equivalent profiles. It can be observed that the PSWD includes a wide range of subsoil conditions. The $V_{S,z}$

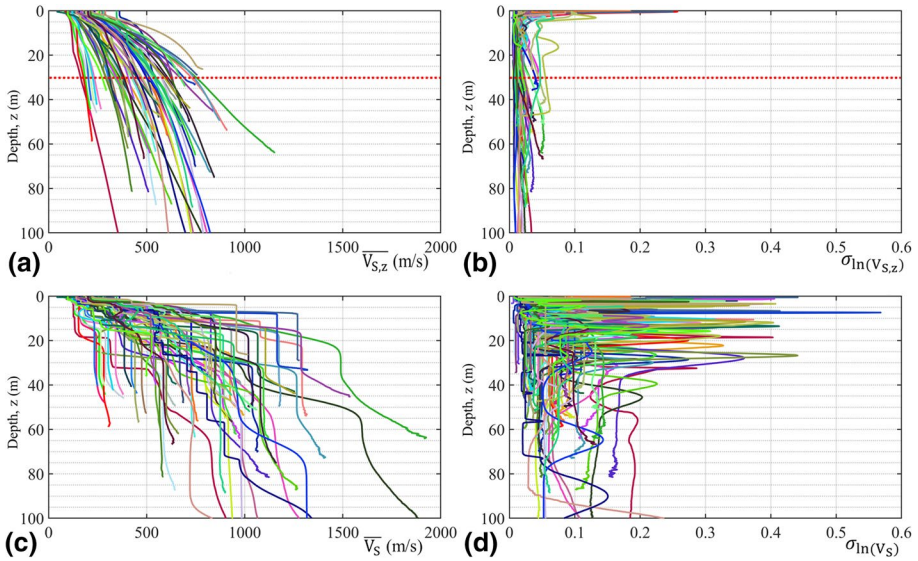


Fig. 6 Parameters of the equivalent profiles for each site (the statistics of the sample of equivalent profiles are computed with a minimum number of 50 models): **a** mean of the harmonic average shear wave velocity profiles; **b** logarithmic standard deviation of the harmonic average shear wave velocity profiles; **c** mean of the interval shear wave velocity profiles; **d** logarithmic standard deviation of the interval shear wave velocity profiles

are reported in natural values, although their calculation was conducted on the logarithmic values. Figure 6a also includes a red dotted line highlighting the depth of 30 m where the $V_{S,30}$ goes from 163 m/s (Catania-1) to 787 m/s (Tarcento-4). Figure 6b shows the logarithmic standard deviation $\sigma_{\ln(V_{S,z})}$ corresponding to each $V_{S,z}$. The $\sigma_{\ln(V_{S,z})}$ profiles show a typical range of values roughly between 0.01 and 0.05. Higher values are observed for a reduced number of sites (12%) in the first 3 m depths reflecting the wavelength content of EDCs. For increasing depths, most of the sites show a $\sigma_{\ln(V_{S,z})}$ lower than 0.025. Also, it can be observed that $\sigma_{\ln(V_{S,z})}$ can be approximated as constant with depth. Local peaks represent the residual influence of the position of the interfaces. However, the consistent global behaviour is maintained and can be modelled as depth independent. Note that a constant logarithmic standard deviation is equivalent to a constant coefficient of variation (i.e. $COV_{V_{S,z}}(z)$). This means that the Gaussian standard deviation (i.e. $\sigma_{(V_{S,z})}(z)$) increases with depth, as the harmonic average velocity typically increases. This observation is in line with the gradual loss of resolution of the surface wave tests with depth (Socco et al. 2010; Foti et al. 2014).

The same calculations were performed for the interval velocity profiles. In this case (Fig. 6c-d), the logarithmic standard deviation of the shear wave velocity is strongly influenced by the position of the interfaces and peaks are present at various depths. These peaks correspond to the depth of the interfaces, where a lognormal distribution cannot describe the interval velocity profile. Indeed, the solution non-uniqueness mostly affects the position of interfaces between layers in the interval velocity profiles. The resulted values presented in Fig. 6d mostly range from 0.02 to 0.2 and are in accordance with other evidence in the literature that are comprehensively compared in Passeri (2019).

In order to clarify the above finding, Fig. 7 shows the inference method applied to the $V_{S,z}$ profiles presented in Fig. 3b and to the V_S profiles presented in Fig. 3a for La Salle-1 site. The same analysis was conducted on the remaining sites in the PSWD showing similar results. Specifically, Fig. 7 shows both the histograms (upper panels) and the quantile–quantile plots (Q-Q plots) (lower panels) assuming a lognormal distribution (Rasmussen 2004) for a standard lognormal random variable (i.e. $V_{S,z}$ or V_S) at specific depths. The lognormal distribution is a common assumption for shear-wave velocity as it is usually preferred over the normal (i.e. Gaussian distribution) when modeling non-negative quantities.

The lognormal distribution for $V_{S,z}$ is confirmed, showing an excellent approximation for different depths, also close to the interfaces. The same lognormal distribution

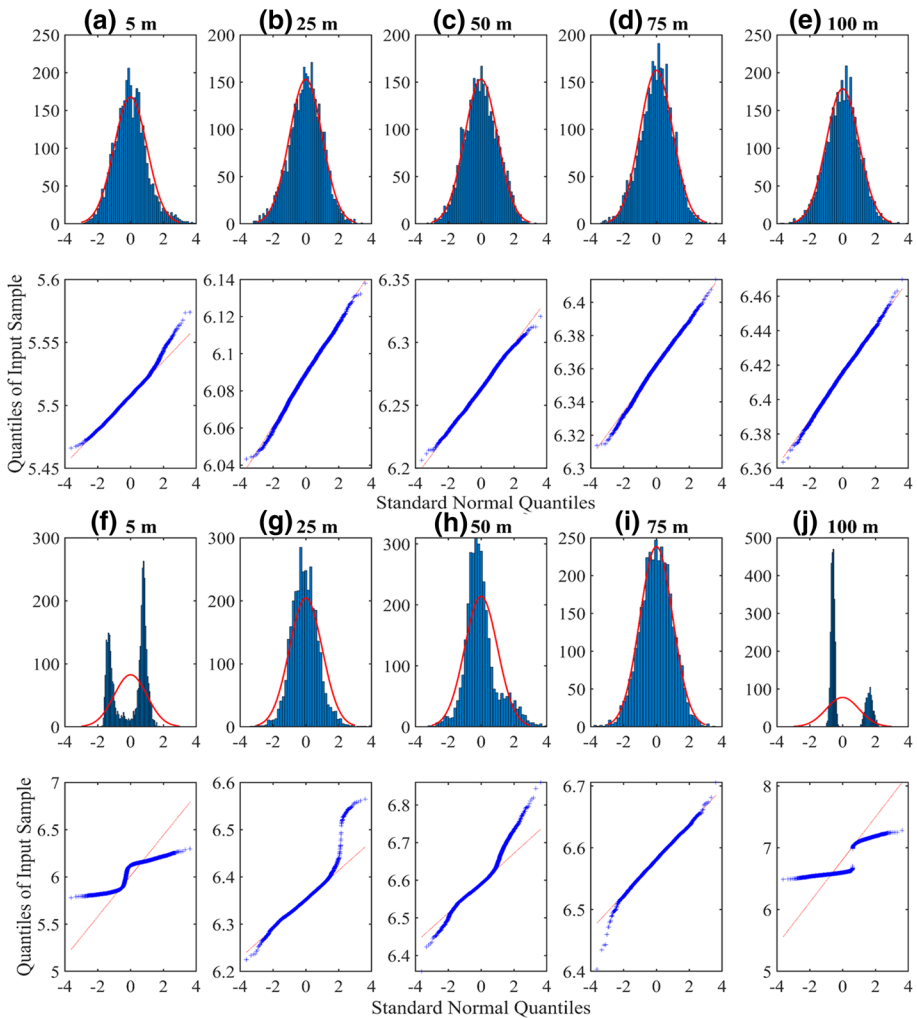


Fig. 7 Histograms and Q-Q plots of the population of equivalent profiles at La Salle-1 (ID 22) for verification of the lognormal distribution: harmonic average shear wave velocity profiles: **a, b, c, d, and e**; interval shear wave velocity profiles: **f, g, h, i, and l**

assumption cannot be however adopted for the interval velocity (i.e. V_S) as proposed by Toro (1995); Kottke and Rathje (2009); and Li and Asimaki (2010). Indeed, V_S cannot be modeled as lognormally distributed close to the interfaces between layers due to the uncertainty on the position of the interfaces which introduces discontinuities in the distribution. This is particularly clear in Fig. 7f and 7j showing a bimodal shape both from the histograms and the Q-Q plots. This is related to the presence of sharp interfaces around 5 and 100 m depth of the profile. This effect is due to the intrinsic superposition of the random variables time and space in the interval velocity profile. On the other hand, the harmonic average profiles are calculated as the ratio of depth and cumulated travel time. Therefore the separation of the two random variable provide a continuous function (Passeri 2019).

3.3 Shear wave velocity proxies from the EDC

Several Authors (Brown et al. 2000; Martin and Diehl 2004; Socco et al. 2017; Foti et al. 2018; and Passeri 2019) suggest the use of the V_R corresponding to a specific wavelength to estimate the $V_{S,30}$ without the need for a formal solution of the Rayleigh inverse problem. This concept can be extended by plotting the V_R vs. λ and the $V_{S,z}$ vs. z profiles of the statistically equivalent solutions. Indeed a remarkable similarity can be observed between the two curves, as suggested in Socco et al. (2017). A verification of the most adopted $\lambda - z$ relationship at the single depth of 30 m by means of the PSWD is hereafter discussed. In this specific case, most of the abovementioned authors suggest the use of the V_R associated with the wavelength of 42 m to be compared with $V_{S,30}$.

For the whole PSWD, Fig. 8a shows the mean of the $V_{S,30}$ of all the equivalent profiles, along with the error bars associated with their logarithmic standard deviations, versus the $V_{R,42}$. This figure provides a validation of the empirical relationships presented in the literature since most of the sites fall very near to the 1–1 line.

In addition, Fig. 8b gives a quantification of the error in the estimation of the $V_{S,30}$ by means of the only EDC, without performing any inversion, reporting an error index in the form of a normalized residual calculated as:

$$\eta = \sqrt{\frac{\left(V_{R,42} - V_{S,30}\right)^2}{\left(\sigma_{V_{S,30}}\right)^2}} \quad (4)$$

The error index estimated by Eq. 5 is reported in Fig. 8b as a function of the average stiffness of the deposit, evaluated by means of $V_{S,30}$. It can be observed that for most of the sites the error index is low, with an average value across all sites of 3.6. Few profiles show a larger error mainly related to the reduced uncertainty of the $V_{S,30}$ that weights the proposed index.

4 Inter-method comparisons

The inter-method comparisons are usually reported in literature in terms of interval velocity V_S profiles. A better understanding of the inter-method differences related to the dynamic characteristics of the deposit can be achieved comparing the $V_{S,z}$ profiles. Many authors already suggested this comparison (Moss 2008; Bergamo et al. 2011; Comina et al.

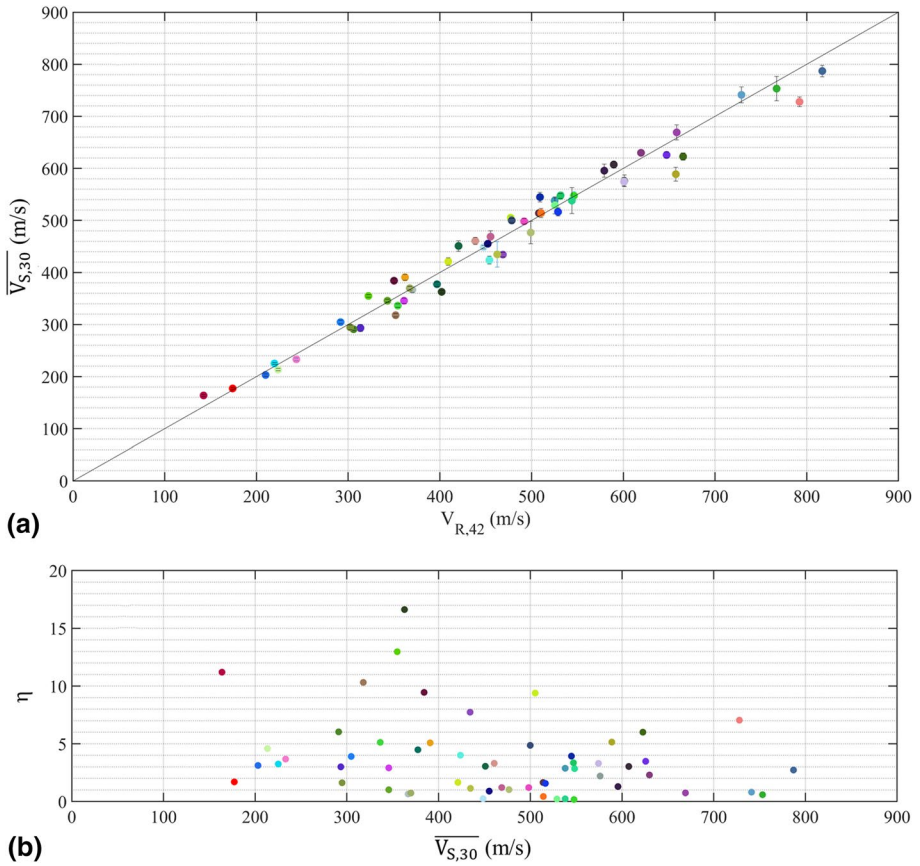


Fig. 8 Validation of the empirical relationship to estimate the harmonic average shear wave velocity at a depth of 30 m ($V_{S,30}$): **a** mean of the $V_{S,30}$ along with the associated standard deviation of the statistical sample of equivalent solutions vs. the $V_{R,42}$; **b** error index to estimate the goodness of the proposed empirical relationship as a function of $V_{S,30}$

2011; Kim et al. 2013; Garofalo et al. 2016b), generally finding good results for all soil categories. In this context, Fig. 9 presents a comparison by an inter-method comparison index (*IMC*) defined as the percent error between the tests (in decimal form):

$$IMC(z) = \frac{(V_{S,z(surface\ waves)}(z) - V_{S,z(invasive)}(z))}{V_{S,z(invasive)}(z)} \tag{5}$$

where $V_{S,z(surface\ waves)}(z)$ is the harmonic average shear wave velocity profile obtained from surface wave test and $V_{S,z(invasive)}(z)$ is the same quantity calculated for the invasive test.

Generally, it can be stated that surface wave tests provide often a lower velocity in the shallow portion of the profile with respect to invasive tests, especially for DH and CH tests (Fig. 9a-b). This difference may be related to the strain hardening due to grouting operations to prepare the hole. These near-surface effects are recognized for invasive methods which tend to have measuring errors for the few uppermost meters (e.g. Moss 2008). Also, the different volumes investigated by the two methodologies

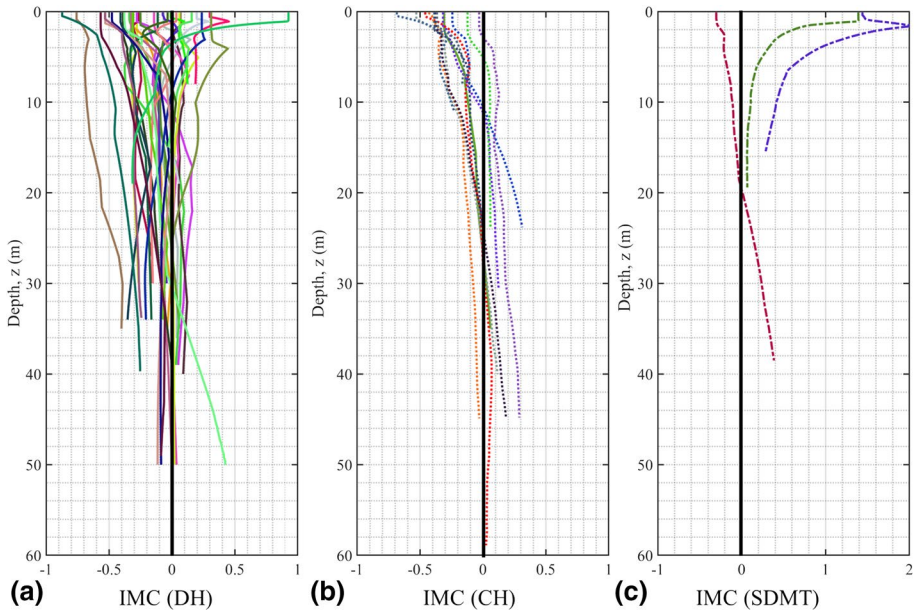


Fig. 9 Inter-method comparison index (IMC) with depth for **a** DH tests, **b** CH tests, and **c** SDMT tests

could play a role in this difference. Figure 9 shows also that 18 of the 47 profiles (note that three sites have multiple invasive tests) present a globally lower $V_{S,z}$ by the surface wave tests for the whole profile depth (i.e. consistently negative $IMCs$). Nevertheless, most of the profiles (34/47) remain within an IMC lower than 0.2 for the entire profiles.

Figure 10 presents an inter-method comparison focusing on the top 30 m of the deposit, which is considered as a proxy for amplification in most seismic codes (Borcherdt 1994, 2012). Modern building codes also consider specific categories for sites where the bedrock is at a depth less than 30 m (e.g. NTC 2018). In this case, the analyst should calculate a specific $V_{S,H}$, where H is the bedrock depth. For these reasons, Fig. 10 shows the comparison of the harmonic average $V_{S,z}$ for the depths of 5 m (Fig. 10a), 10 m (Fig. 10b), 15 m (Fig. 10c), 20 m (Fig. 10d), 25 m (Fig. 10e) and 30 m (Fig. 10f). Here the values from the statistical sample of surface wave tests are displayed as mean and logarithmic standard deviation converted in natural values to be consistently displayed as points and error bars in the graph. A substantial higher velocity is estimated by the invasive tests for the shallow part of the deposit, with a general agreement for the deepest portions. Figure 10g completes the charts comparing the $V_{R,42}$ with the $V_{S,30}$ obtained from the invasive tests. The comparison with Fig. 8a gives a more scattered result retrieved with the invasive tests that generally show higher harmonic average velocities, as expected from Fig. 10f. The values of $V_{S,30}$, both from invasive and surface wave tests, and of $V_{R,42}$ are also reported in the electronic supplement of the paper for direct numerical comparison. Please note that not all the sites have corresponding quantification of these parameters given the absence of invasive tests for some sites or the reduced penetration depth of surface wave tests in few sites.

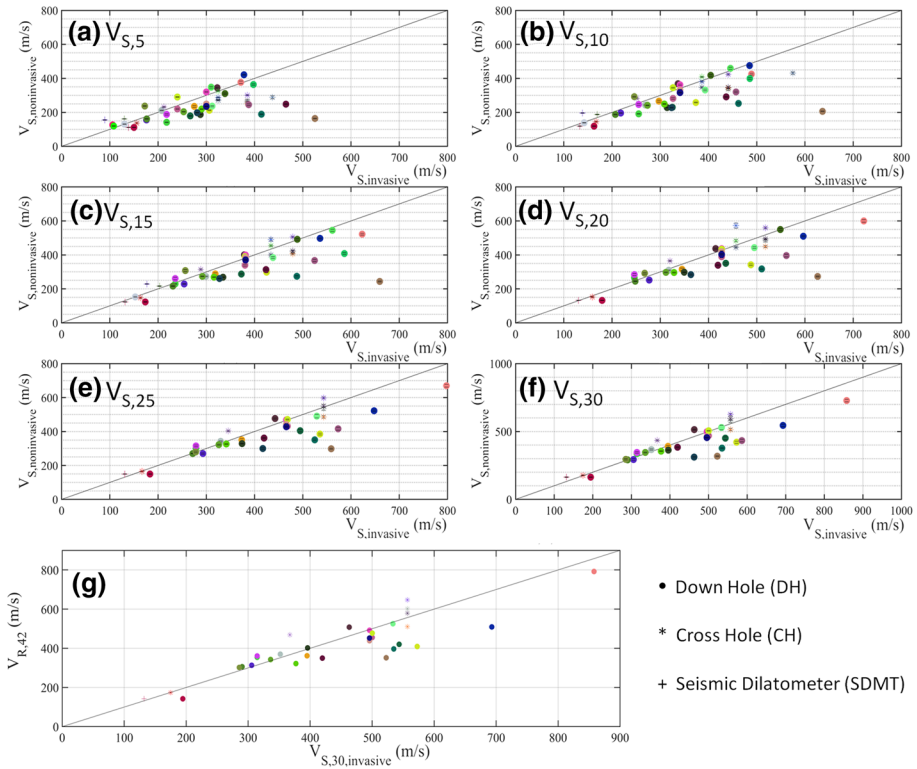


Fig. 10 Inter-method comparison of the V_S models in terms of harmonic average shear wave velocity profiles: **a** $V_{S,5}$, **b** $V_{S,10}$, **c** $V_{S,15}$, **d** $V_{S,20}$, **e** $V_{S,25}$, **f** $V_{S,30}$. Panel **g** reports a comparison of the Rayleigh wave velocity for a wavelength of 42 m against the $V_{S,30}$ from invasive methods

5 Discussions and conclusions

The Polito Surface Wave flat-file Database (PSWD) includes several sites that have been investigated in Italy during the past 25 years by the Politecnico di Torino (sometimes in collaboration with the Università di Torino). The main objectives of the flat-file database are: (i) the assessment of the statistical properties of the test results; (ii) the development of empirical correlations; (iii) inter-method comparisons and (iv) the calibration of empirical predictive models. In addition, the PSWD can be useful as a benchmark for the validation and verification of new inversion algorithms.

Some examples of use of the flat-file database are reported in the paper. The first is a formulation for the estimation of the uncertainties associated with the experimental dispersion curve (EDC). This formulation can be used when a statistically significant population of measurements is not available for a specific site. It offers the opportunity to propagate uncertainties into V_S profiles when a direct estimation of experimental uncertainties in the field is not possible. Caution must be posed in the application of the proposed formulation outside the frequency range for which it is proposed (i.e. from 2.5 to 75 Hz).

The flat-file database is also useful for the analysis of the statistical properties of the solutions. Specifically, in the paper it is shown that the harmonic average shear wave

velocity profiles can be assumed as lognormally distributed. On the other hand, the results showed that the interval velocity profiles can be used only as an engineering schematization of the subsurface but are not adequate to model the uncertainties.

The analysis of the flat-file database confirmed the physical correlation between the wavelength of the Rayleigh velocity and the depth of the associated harmonic average shear wave velocity model. This physical correlation was already shown by other authors: Aung and Leong (2015) evaluated the contribution of different layers to the surface wave propagation velocity at certain wavelengths with specific weighting factors; Haney and Tsai (2015) proposed a Dix-type relationship to obtain a depth profile directly from the experimental dispersion curve. The analysis of the PSWD shows that at 30 m depth, a direct correlation (i.e. $\lambda = 42 \text{ m} - z = 30 \text{ m}$) can be used to estimate the soil class of the deposit without the need for a solution of the inverse problem. More generally the experimental dispersion curve can be directly transformed, at any depth, through the use of a simple data transform, based on an appropriate wavelength/depth relationship, into a $V_{S,z}$ profile. This last transformation has been demonstrated to match both the $V_{S,z}$ profile obtainable from a specific inversion of the EDC and the one from independent invasive tests (Socco and Comina 2015; Socco et al. 2017).

Some inter-method comparisons are also presented between invasive and non-invasive methods. The results show a general trend to estimate lower velocity from surface wave tests than invasive tests, particularly in the shallow part of the deposit. This may be related to soil modifications induced by borehole execution or to the different volumes investigated by invasive surveys and surface wave tests. In both cases the surface wave tests providing average information on a wide investigation volume and being inherently non-invasive, could result more effective in the overall seismic characterization of a site.

In future research, further efforts may be devoted to the assessment of the experimental uncertainties associated with higher modes of the dispersion curve. In this respect additional twenty-one sites, where higher modes were influential in the dispersion curves, are yet available. These sites were not included in the current version of the PSWD, to focus on the fundamental-mode sites. Also, the assumption of the lognormal distribution for the harmonic average shear wave velocity profile should be adopted limiting the statistical sample to \pm two standard deviations, as usually proposed for other physical random variables. Finally, the $V_{S,z}-V_{R,\lambda}$ relationship could be expanded beyond the correlation for the specific depth of 30 m (i.e. $V_{S,30}$).

Supplementary Information The online version contains supplementary material available at <https://doi.org/10.1007/s10518-021-01069-1>.

Funding Open access funding provided by Politecnico di Torino within the CRUI-CARE Agreement..

Open Access This article is licensed under a Creative Commons Attribution 4.0 International License, which permits use, sharing, adaptation, distribution and reproduction in any medium or format, as long as you give appropriate credit to the original author(s) and the source, provide a link to the Creative Commons licence, and indicate if changes were made. The images or other third party material in this article are included in the article's Creative Commons licence, unless indicated otherwise in a credit line to the material. If material is not included in the article's Creative Commons licence and your intended use is not permitted by statutory regulation or exceeds the permitted use, you will need to obtain permission directly from the copyright holder. To view a copy of this licence, visit <http://creativecommons.org/licenses/by/4.0/>.

References

- Ahdi SK, Stewart JP, Ancheta TD, Kwak DY, Mitra D (2017) Development of VS profile database and proxy-based models for VS30 prediction in the Pacific Northwest Region of North America. *Bull Seismol Soc Am* 107:1781–1801
- Ahdi SK, Sadiq S, Ilhan O, Bozorgnia Y, Hashash A, Kwak DY, Park CB, Yong A (2018) Development of a United States community Shear wave velocity profile database. *Geotech Earthquake Eng Soil Dynam V GSP* 291:330
- Aimar M, Ciancimino A, Foti S (2019) An assessment of the NTC18 simplified procedure for stratigraphic seismic site amplification prediction. *Rivista Italiana di Geotecnica*
- Ancheta TD, Darragh RB, Stewart JP, Seyhan E, Silva WJ, Chiou BS-J, Wooddell KE, Graves RW, Kottke AR, Boore DM (2014) NGA-West2 database. *Earthquake Spectra* 30:989–1005
- Ang A, H-S., Tang WH (1984) *Probability concepts in engineering planning and design*
- Aung AMW, Leong EC (2015) Application of weighted average velocity (WAVe) method to determine VS₃₀. *Soils Foundat* 55:548–558. <https://doi.org/10.1016/j.sandf.2015.04.007>
- Bergamo P, Comina C, Foti S, Maraschini M (2011) Seismic characterization of shallow bedrock sites with multimodal Monte Carlo inversion of surface wave data. *Soil Dynam Earthquake Eng* 31:530–534
- Bommer JJ (2003) Uncertainty about the uncertainty in seismic hazard analysis. *Eng Geol* 70:165–168
- Bonalumi P, Colombo M, Comina C, di Prisco M, Foti S, e Galli A (2011) Characterization of blast effects on surrounding soil: internal detonations in underground pipes. *Appl Mechan Mater* 82:302–307
- Bonetto S, De Luca DA, Comina C, Stringari M, (2015) Integration of Geological and Geophysical Survey for a Geo-Exchange System Design (2015) *Engineering Geology for Society and Territory - Volume 1: Climate Change and Engineering Geology*, pp. 345–348
- Borcherdt RD (1994) Estimates of site-dependent response spectra for design (methodology and justification). *Earthquake spectra* 10:617–653
- Borcherdt RD (2012) VS30–A site-characterization parameter for use in building Codes, simplified earthquake resistant design, GMPEs, and ShakeMaps. The 15th World Conference on Earthquake Engineering.
- Boore DM, Brown LT (1998) Comparing shear-wave velocity profiles from inversion of surface-wave phase velocities with downhole measurements: systematic differences between the CXW method and downhole measurements at six USC strong-motion sites. *Seismol Res Lett* 69(3):222–229
- Brown L, Diehl JG, Nigbor RL (2000) A simplified procedure to measure average shear-wave velocity to a depth of 30 meters (VS30). *Proceedings of 12th world conference on earthquake engineering*. 1–8
- Brown LT, Boore DM, Stokoe KH (2002) Comparison of shear-wave slowness profiles at 10 strong-motion sites from noninvasive SASW measurements and measurements made in boreholes. *Bull Seismol Soc Am* 92(8):3116–3133
- Budnitz RJ, Apostolakis G, Boore DM (1997) Recommendations for probabilistic seismic hazard analysis: guidance on uncertainty and use of experts. Nuclear Regulatory Commission, Washington, DC (United States). Div. of Engineering Technology; Lawrence Livermore National Lab., CA (United States); Electric Power Research Inst., Palo Alto, CA (United States); USDOE, Washington, DC (United States)
- Calosi E, Ferrini M, Cancelli A, Foti S, Lo Presti DC, Pallara O, D'Amato Avanzi G, Pochini A, Puccinelli A, Luzi L, Rainone M, Signanini P (2001) "Geological and Geotechnical investigations for the seismic response analysis at Castelnuovo Garfagnana in Central Italy", *Proc. XV ICSMGE, Earthquake Geotechnical Engineering Satellite Conference, Istanbul, Turkey 25th August 2001 Lessons Learned from Recent Strong Earthquakes (A. Ansal ed.)*, 141–148
- Chiou B, Darragh R, Gregor N, Silva W (2008) NGA project strong-motion database. *Earthquake Spectra* 24:23–44
- Comina C, Foti S (2007) Surface Wave Tests for Vibration Mitigation Studies. *J Geotech Geoenviron Eng* 133:1320–1324
- Comina C, Foti S, Socco L, Strobbia, Geophysycal C (2004) Characterization for seepage potential assessment along the embankments of the Po river. *ISC'2*, -, 451–458.
- Comina C, Foti S, Boiero D, Socco L (2011) Reliability of VS₃₀ evaluation from surface-wave tests. *J geotech Geoenviron Eng* 137:579–586
- Cornou C, Ohrnberger M, Boore DM, Kudo K, Bard PY (2006) "Derivation of structural models from ambient vibration array recordings: results from an international blind test" Third International Symposium on the Effects of Surface Geology on Seismic Motion Grenoble, France, 30 August - 1 September 2006

- Cox BR, Teague DP (2016) Layering ratios: a systematic approach to the inversion of surface wave data in the absence of a priori information. *Geophys J Int* 207:422–438
- Cox BR, Wood CM, Teague DP (2014) Synthesis of the UTexas1 surface wave dataset blind-analysis study: inter-analyst dispersion and shear wave velocity uncertainty. *Geotechnical Special Publication*, (234 GSP), pp 850–859
- Dumouchel W, O'bien F (1992) Integrating a robust option into a multiple regression computing environment. *Computing and graphic statistics*. Springer, New York, pp 41–48
- EPRI (1993) Guidelines for Determining Design Basis Ground Motions, 1: Method and Guidelines for Estimating Earthquake Ground Motion in Eastern North America
- Foti S (2003) Small-strain stiffness and damping ratio of Pisa clay from surface wave tests. *Geotechnique* 53:455–461
- Foti S, Sambuelli L, Socco VL, Strobbia C (2003) Experiments of joint acquisition of seismic refraction and surface wave data. *Near surface geophy* 1:119–129
- Foti S, Comina C, Boiero D (2007) Reliability of combined active and passive surface wave methods. *Rivista Italiana di Geotecnica*, anno XLI, n°2, pp 39 - 47, Patron Editore, ISSN 0577–1405
- Foti S, Comina C, Boiero D, Socco L (2009) Non-uniqueness in surface-wave inversion and consequences on seismic site response analyses. *Soil Dynam Earthquake Eng* 29:982–993
- Foti S, Parolai S, Bergamo P, Di Giulio G, Maraschini M, Milana G, Picozzi M, Puglia R (2011) Surface wave surveys for seismic site characterization of accelerometric stations in ITACA. *Bull Earthq Eng* 9:1797–1820
- Foti S, Lai CG, Rix GJ, Strobbia C (2014) *Surface wave methods for near-surface site characterization*. CRC Press
- Foti S, Hollender F, Garofalo F, Albarello D, Asten M, Bard P-Y, Comina C, Cornou C, Cox B, Di Giulio G (2018) Guidelines for the good practice of surface wave analysis: a product of the InterPACIFIC project. *Bull Earthq Eng* 16:2367–2420
- Foti S, Passeri F, Rodriguez-Marek A (2019) Uncertainties and variabilities in seismic ground response analyses. *Keynote Lecture presented at the 7ICEGE (Roma, 17–20 June 2019)*
- Garofalo F, Foti S, Hollender F, Bard PY, Cornou C, Cox BR, Ohrnberger M, Sicilia D, Asten M, Di Giulio G, Forbriger T, Guillier B, Hayashi K, Martin A, Matsushima S, Mercerat D, Poggi V, Yamanaka H (2016a) InterPACIFIC project: Comparison of invasive and non-invasive methods for seismic site characterization. Part I: Intra-comparison surface wave methods. *Soil Dynam Earthquake Eng* 82:222–240
- Garofalo F, Foti S, Hollender F, Bard P, Cornou C, Cox B, Dechamp A, Ohrnberger M, Perron V, Sicilia D (2016b) InterPACIFIC project: Comparison of invasive and non-invasive methods for seismic site characterization. Part II: Inter-comparison between surface-wave and borehole methods. *Soil Dynamics and Earthquake Eng* 82:241–254
- Griffiths SC, Cox BR, Rathje EM, Teague DP (2016) Mapping dispersion misfit and uncertainty in V s profiles to variability in site response estimates. *J Geotech Geoenviron Eng* 142:04016062
- Hailemikal S, Amoroso S, Gaudiosi I (2020) Guest editorial: seismic microzonation of Central Italy following the 2016–2017 seismic sequence. *Bull Earthquake Eng* 18:5415–5422
- Haney MM, Tsai VC (2015) Non perturbational surface-wave inversion: A Dix-type relation for surface waves. *Geophysics*, 80, no. 6, EN167–EN177
- Huber PJ (2011) *Robust statistics*. International Encyclopedia of Statistical Science, Springer
- Kayen R, Seed RB, Moss RE, Cetin OK, Tanaka Y, Tokimatsu K (2004) Global shear wave velocity database for probabilistic assessment of the initiation of seismic-soil liquefaction. *Civil and Environmental Engineering*, 37
- Kim D, Park H, Bang E (2013) Round Robin test for comparative study of in-situ seismic tests. *Geotech geophysic site characterizat* 4:1427–1434
- Kottke A, Rathje E (2009) Technical manual for Strata. PEER Report 2008/10, Pacific Earthquake Engineering Research Center, College of Engineering, *University of California, Berkeley*
- Kramer SL (1996) *Geotechnical Earthquake Engineering* Prentice Hall, New York
- Lai CG, Foti S, Rix GJ (2005) Propagation of data uncertainty in surface wave inversion. *J Environ Eng Geophys* 10:219–228
- Li W, Asimaki D (2010) Site-and motion-dependent parametric uncertainty of site-response analyses in earthquake simulations. *Bull Seismol Soc Am* 100:954–968
- Marosi KT, Hiltunen DR (2004) Characterization of SASW phase angle and phase velocity measurement uncertainty. *Geotech Test J* 27:205–213
- Martin AJ, Diehl JG (2004) Practical experience using a simplified procedure to measure average shear-wave velocity to a depth of 30 meters (VS30). 13th World Conf. on Earthquake Engineering., International Association for Earthquake Engineering Tokyo

- Monaco P, Totani G, Barla G, Cavallaro A, Costanzo A, D'onofrio A, Evangelista L, Foti S, Grasso S, Lanzo G (2012) Geotechnical aspects of the L'Aquila earthquake. *Special Topics in Earthquake Geotechnical Engineering*. Springer
- Moss RES (2008) Quantifying measurement uncertainty of thirty-meter shear-wave velocity. *Bull Seismol Soc Am* 98:1399–1411
- NTC (2018) Norme Tecniche per le Costruzioni *Consiglio Superiore dei Lavori Pubblici, Ministero per le Infrastrutture e dei Trasporti*
- Olafsdottir EA, Bessason B, Erlingsson S (2018) Combination of dispersion curves from MASW measurements. *Soil Dynam Earthquake Eng* 113:473–487
- O'Neill A (2004) Shear velocity model appraisal in shallow surface wave inversion. Symposium on the Application of Geophysics to Engineering and Environmental Problems 2004, 2004. Society of Exploration Geophysicists, 1544–1555
- Passeri F (2019) *Development of an advanced geostatistical model for shear wave velocity profiles to manage uncertainties and variabilities in Ground Response Analyses* Ph.D. dissertation, Politecnico di Torino
- Passeri F, Comina C, Marangoni V, Foti S, Amoroso S (2018) Geophysical Monitoring of Blast-induced Liquefaction At the Mirabello (ne Italy) Test Site. *J Environ Eng Geophys* 23:319–333
- Passeri F, Foti S, Cox B, Rodriguez-Marek A (2019a) Influence of estimated epistemic uncertainties in shear wave velocity models on ground response analyses., *Earthquake Spectra* 35, 26
- Passeri F, Foti S, Rodriguez-Marek A 2020. A new geostatistical model for the management of uncertainties in shear wave velocity profiles, *Soil Dynamics and Earthquake Engineering*, 136, art. no. 106247
- Piatti C, Boiero SD, Foti LV, Socco (2013a) “Constrained 1D joint inversion of seismic surface waves and P-refraction traveltimes”, *Geophysical Prospecting*, 61 (Suppl. 1)
- Piatti C, Foti S, Socco LV, Boiero D (2013b) Building 3D Shear-wave velocity models using surface waves testing: the tarcento basin case history. *Bull Seismol Soc Am* 103:1038–1047
- Pitilakis K, Riga E, Anastasiadis A (2013) New code site classification, amplification factors and normalized response spectra based on a worldwide ground-motion database. *Bull Earthq Eng* 11:925–966
- Rasmussen CE (2004) Gaussian processes in machine learning. Springer, *Advanced lectures on machine learning*
- Ross SM (2014) Introduction to probability and statistics for engineers and scientists. Academic Press
- Sadiq S, Ilhan O, Ahdi SK, Bozorgnia Y, Hashash YM, Kwak DY, Park D, Yong A, Stewart J (2018) 2018. A proposed seismic velocity profile database model, GEESD V, *Geotechnical Earthquake Engineering and Soil Dynamics conference*, Austin, Texas
- Shapiro SS, Wilk MB (1965) An analysis of variance test for normality (complete samples). *Biometrika* 52:591–611
- Socco LV, Boiero D (2008) Improved Monte Carlo inversion of surface wave data. *Geophys Prospect* 56:357–371
- Socco LV, Comina C (2015) Approximate direct estimate of S-wave velocity model from surface wave dispersion curves: 21st Annual International Conference and Exhibition. EAGE, *Extended Abstracts*, p A09
- Socco LV, Comina C (2017) Time-average velocity estimation through surface-wave analysis: Part 2 — P-wave velocity. *Geophysics* 82(3):U61–U73
- Socco LV, Boiero D, Comina C, Foti S, Wisén R (2008) Seismic characterization of an Alpine site. *Near Surface Geophysics* 6:255–267
- Socco LV, Boiero D, Foti S, Wisén R (2009) Laterally constrained inversion of ground roll from seismic reflection records. *Geophysics* 74:G35–G45
- Socco LV, Foti S, Boiero D (2010) Surface-wave analysis for building near-surface velocity models—Established approaches and new perspectives. *Geophysics* 75, 75A83–75A102
- Socco LV, Mabyalaht G, Comina C (2015) Robust static estimation from surface wave data. *SEG Technic Program Expand Abstracts* 34:5222–5227
- Socco LV, Comina C, Khosro Anjom F (2017) Time-average velocity estimation through surface-wave analysis: Part 1—S-wave velocity. *Geophysics* 82:U49–U59
- Stewart JP, Afshari K, Hashash YM (2014a) Guidelines for performing hazard-consistent one-dimensional ground response analysis for ground motion prediction. *PEER Rep* 16
- Stewart JP, Klimis N, Savvaidis A, Theodoulidis N, Zargli E, Athanasopoulos G, Pelekis P, Mylonakis G, Margaris B (2014b) Compilation of a local VS profile database and its application for inference of VS 30 from geologic-and terrain-based proxies. *Bull Seismol Soc Am* 104:2827–2841

- Stewart JP, Zimmaro P, Lanzo G, Mazzoni S, Ausilio E, Aversa S, Bozzoni F, Cairo R, Capatti MC, Castiglia M (2018) Reconnaissance of 2016 Central Italy earthquake sequence. *Earthquake Spectra* 34:1547–1555
- Strobbia C, Foti S (2006) Multi-offset phase analysis of surface wave data (MOPA). *J Appl Geophys* 59:300–313
- Teague DP, Cox BR (2016) Site response implications associated with using non-unique vs profiles from surface wave inversion in comparison with other commonly used methods of accounting for vs uncertainty. *Soil Dynam Earthquake Eng* 91:87–103
- Teague DP, Cox BR, Rathje EM (2018) Measured vs. predicted site response at the garner valley down-hole array considering shear wave velocity uncertainty from borehole and surface wave methods. *Soil Dynam Earthquake Eng* 113:339–355
- Matlab 2018. 9.7.0.1190202 (R2019b), Natick, Massachusetts: The MathWorks Inc
- Toro G (1995) Probabilistic models of site velocity profiles for generic and site-specific ground-motion amplification studies. Department of Nuclear Energy Brookhaven National Laboratory, Upton, New York
- Wathelet M, Jongmans D, Ohrnberger M (2004) Surface-wave inversion using a direct search algorithm and its application to ambient vibration measurements. *Near surface geophys* 2:211–221
- Wills C, Petersen M, Bryant W, Reichle M, Saucedo G, Tan S, Taylor G, Treiman J (2000) A site-conditions map for California based on geology and shear-wave velocity. *Bull Seismol Soc Am* 90:S187–S208
- Zywicki DJ (1999) Advanced signal processing methods applied to engineering analysis of seismic surface waves. Georgia Institute of Technology, Atlanta, USA PhD dissertation

Publisher's Note Springer Nature remains neutral with regard to jurisdictional claims in published maps and institutional affiliations.