

The synergistic effect of chlorotoxin-mApoE in boosting drug-loaded liposomes across the BBB

Original

The synergistic effect of chlorotoxin-mApoE in boosting drug-loaded liposomes across the BBB / Formicola, B., Dal Magro, R., Montefusco-Pereira, C.V., Lehr, C.-M., Koch, M., Russo, L., Grasso, G., Deriu, M.A., Danani, A., Bourdoulous, S., Re, F.. - In: JOURNAL OF NANOBIO TECHNOLOGY. - ISSN 1477-3155. - 17:1(2019), p. 115. [10.1186/s12951-019-0546-3]

Availability:

This version is available at: 11583/2866000 since: 2021-01-22T23:01:28Z

Publisher:

BioMed Central Ltd.

Published

DOI:10.1186/s12951-019-0546-3

Terms of use:

This article is made available under terms and conditions as specified in the corresponding bibliographic description in the repository

Publisher copyright

(Article begins on next page)

SHORT COMMUNICATION

Open Access



The synergistic effect of chlorotoxin-mApoE in boosting drug-loaded liposomes across the BBB

Beatrice Formicola^{1*}, Roberta Dal Magro¹, Carlos V. Montefusco-Pereira², Claus-Michael Lehr², Marcus Koch³, Laura Russo⁴, Gianvito Grasso⁵, Marco A. Deriu⁶, Andrea Danani⁵, Sandrine Bourdoulous⁷ and Francesca Re¹

Abstract

We designed liposomes dually functionalized with ApoE-derived peptide (mApoE) and chlorotoxin (CITx) to improve their blood–brain barrier (BBB) crossing. Our results demonstrated the synergistic activity of CITx-mApoE in boosting doxorubicin-loaded liposomes across the BBB, keeping the anti-tumour activity of the drug loaded: mApoE acts promoting cellular uptake, while CITx promotes exocytosis of liposomes.

Keywords: Nanoparticles, Liposomes, Brain, Blood–brain barrier, Drug delivery, Doxorubicin, Chlorotoxin, Glioblastoma

Main text

The blood–brain barrier (BBB) penetration of drugs is one of the biggest challenges in the development of therapeutics for central nervous system (CNS) disorders [1].

The complexity of the BBB hampers the CNS drug delivery: it is formed by specialized brain capillary endothelial cells in direct communication with other cells of the CNS, with the circulating immune cells, and with the peripheral tissues via macromolecules exchange with the blood [2].

However, the BBB targeting and crossing, exploiting different mechanisms, remains the most promising strategy to deliver drugs to the brain without disrupting the barrier [3].

In this context, the incorporation of drugs in nanoparticles allowed the enhancement of drug permeation across the BBB, achieving a more favourable drug pharmacokinetics. Moreover, through the multiple functionalization of nanoparticles surface, a more targeted delivery can be attained [4].

We have reported that liposomes functionalized with a modified Apolipoprotein E-derived peptide (CWG-LRKLKRLLR; mApoE) are able to cross intact the BBB and to deliver the drug cargo into the brain, using both *in vitro* and *in vivo* models [5–8]. However, in animal models, the amount of mApoE-LIP reaching the brain after peripheral administration is 0.2–0.3% of injected dose [7, 8]. This order of magnitude should be not enough to achieve a therapeutic effect of carried drugs for the treatment of CNS diseases. Moreover, it should be pointed out that also the BBB alterations, in aging or disease, could limit the drug delivery [9]. To this purpose, we have reported on the reduction of brain penetration of mApoE-LIP in animal models of Alzheimer's disease, respect to healthy control mice [10].

In the present work, we aim to improve the performance of mApoE-LIP in BBB crossing by adding the neurotoxin, chlorotoxin (CITx), as second surface functionalization of LIP. CITx is a 36-amino acid peptide isolated from the venom of Giant Yellow Israeli scorpion. Since the first isolation, about 25 years ago to date, CITx has awakened strong interest in oncology due to its high binding affinity to cancer cells, brain tumours included [11–13]. It has been shown that CITx is able to overcome the BBB in *in vivo* models without damaging it, but the

*Correspondence: bformicola@campus.unimib.it

¹ School of Medicine and Surgery, University of Milano-Bicocca, Via Raoul Follereau 3, 20854 Veduggio al Lambro, MB, Italy

Full list of author information is available at the end of the article



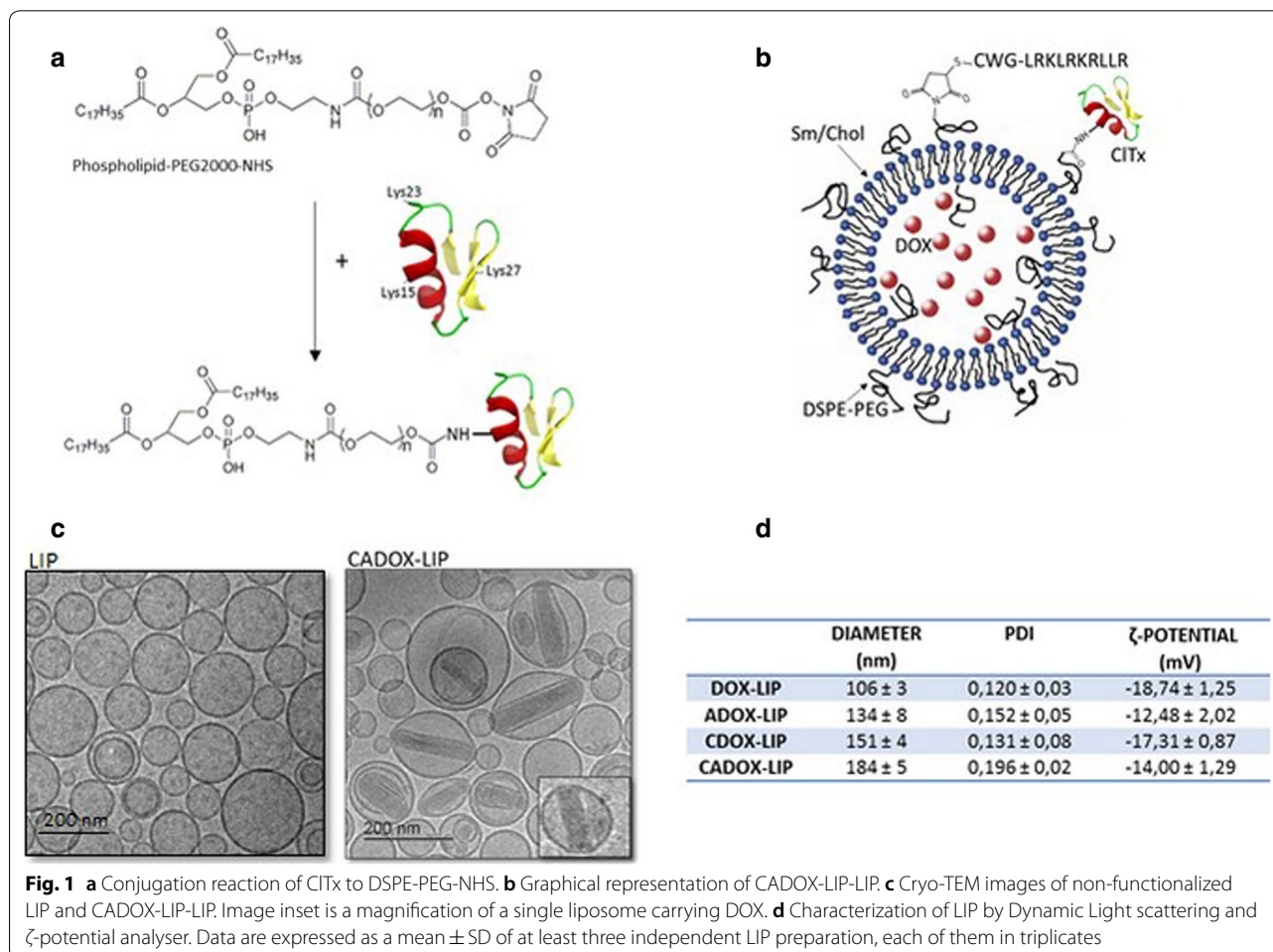
mechanism by which CITx crosses the BBB is not fully understood [14, 15].

We designed, synthesized and characterized LIP dually functionalized with mApoE peptide and with a lipid-modified CITx. Furthermore, we studied the ability of these nanovectors to cross the BBB in vitro, carrying doxorubicin (DOX) payload as a drug model.

The CITx was chemically modified by attaching 1,2-distearoyl-sn-glycero-3-phosphoethanolamine-polyethylene glycol 2000 with active succinimidyl ester (DSPE-PEG-NHS) via the amide bond formation reaction on Lys15, Lys23 and Lys27 of the peptide (Fig. 1a), following the procedure previously described [16] (Additional file 1).

Liposomes, composed of cholesterol/sphingomyelin/DSPE-PEG-maleimide (48.75/48.75/2.5 molar ratio) [5], were prepared by extrusion procedure through 100-nm filter pores at 60 ± 4 °C (Tc sphingomyelin = 54 °C; Tc DSPE = 74 °C) in 500 mM ammonium sulphate pH 5.5. These non-functionalized liposomes were defined as LIP. LIP were then dialyzed against 10 mM HEPES, 150 mM NaCl pH 7.4 in order to obtain a pH gradient

between inner and outer lipid bilayer. DOX was incorporated in LIP core by remote-loading (DOX-LIP) [16]. Subsequently, mApoE peptide with a C-terminal cysteine (Cys) was conjugated to the LIP surface through the maleimide-thiol coupling reaction using an excess of the peptide [5, 6]. These mApoE-LIP embedding DOX have been named as ADOX-LIP. These particles, or DOX-LIP, were functionalized with lipid-CITx by post-insertion procedure, generating CDOX-LIP (CITx-DOX-LIP) and CADOX-LIP-LIP (CITx-mApoE-DOX-LIP) (Fig. 1b). LIP were purified by size-exclusion chromatography and physico-chemically characterized. The yield of DOX encapsulation into LIP was $72 \pm 10\%$ and the final preparations contained 210 ± 15 µg of DOX/µmol of lipids. The yield of LIP surface functionalization with mApoE peptide was $63 \pm 3\%$, according to previously published data [5, 6]. The post-insertion yield of lipid-CITx was $70 \pm 6\%$. Since the post-insertion of a new lipid is expected to alter the membrane of the LIP [17], which may cause leakage of the entrapped drug, the DOX release after functionalization with CITx was measured. No significant



leakage of DOX was observed after lipid-CITx post-insertion. Cryo-TEM results (Fig. 1c) showed particles with a mean diameter in the order of 200 nm, predominantly unilamellar structure (>80%). The morphological changes of CADOX-LIP, compared to empty LIP, are due to the encapsulation of the drug, generating the previously reported “coffee-bean” shape [18], with DOX/sulfate co-crystals inside LIP core. All samples displayed a size <200 nm, were monodispersed (polydispersity index, PDI < 0.2) and negatively charged (Fig. 1d). These parameters remained constant for up to 15 days within the experimental error (<3.1% of variation) (Additional file 1). Considering that, ~100,000 lipids are in the outer layer of a 200-nm diameter LIP, which contain 2.5 mol % of DSPE-PEG-maleimide, the mApoE density after incubation is of ~1200 peptide molecules per single LIP. The CITx density ranging from 200–300 peptide molecules per single LIP.

The capacity of CADOX-LIP to translocate across brain endothelial cells, carrying drug payload, was assessed in an in vitro human BBB model. Immortalized

human brain capillary endothelial cells (hCMEC/D3) were cultured on semipermeable membrane filters of a transwell system (Fig. 2a) (Additional file 1). First, the effect of liposomes treatment on hCMEC/D3 features was assessed by measuring: (i) transendothelial electrical resistance (TEER); (ii) endothelial permeability (EP) to the paracellular probe lucifer yellow (LY); (iii) cell viability by MTT assay; (iv) morphological cell features by optical microscopy [7, 19] (Additional file 1). Free DOX showed an important toxic effect on BBB model, as reflected by alterations of bioelectrical (TEER = $16 \pm 3 \Omega \text{ cm}^2$, compared to $29 \pm 3 \Omega \text{ cm}^2$ of untreated cells), functional (EP to LY = $3.06 \pm 0.2 \cdot 10^{-3} \text{ cm/min}$, respect to $1.87 \pm 0.6 \cdot 10^{-3} \text{ cm/min}$ of untreated cells) and structural properties (<20% of viable cells) of hCMEC/D3 monolayer. These effects were prevented by incorporation of DOX in the LIP core, indicating that the BBB integrity can be preserved. Moreover, the surface functionalization of LIP with mApoE and CITx did not show significant toxic effect on the BBB model features (Fig. 2b–d).

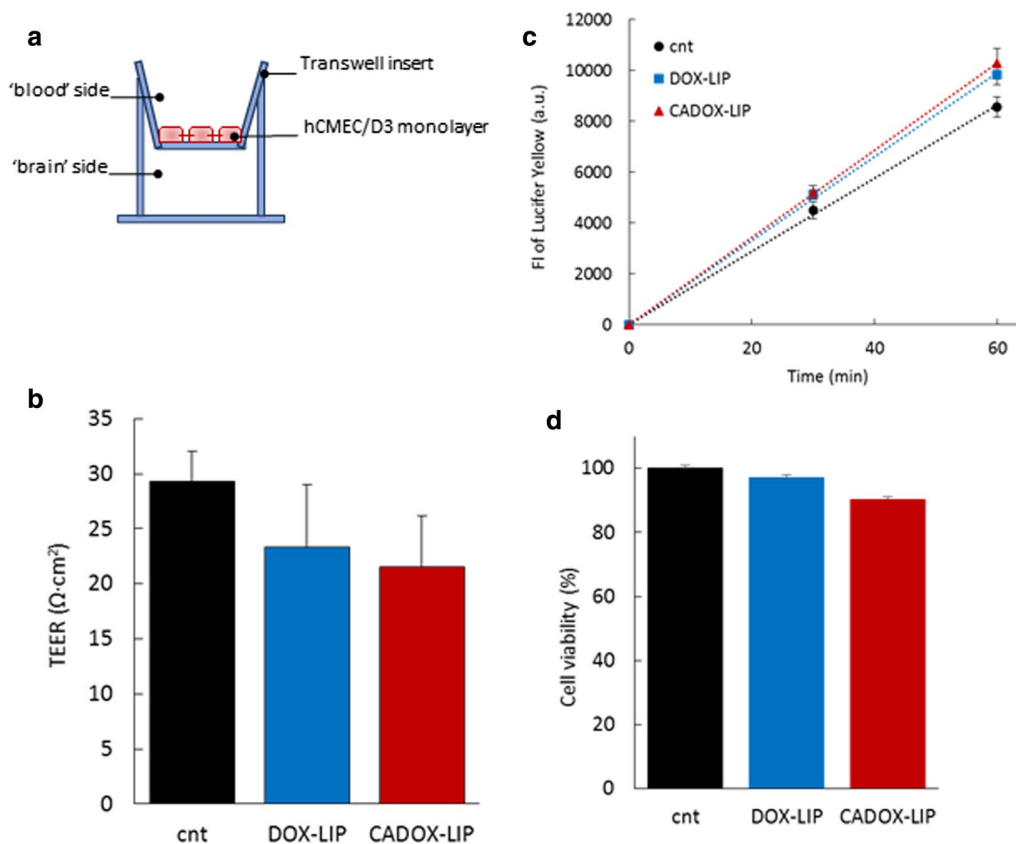


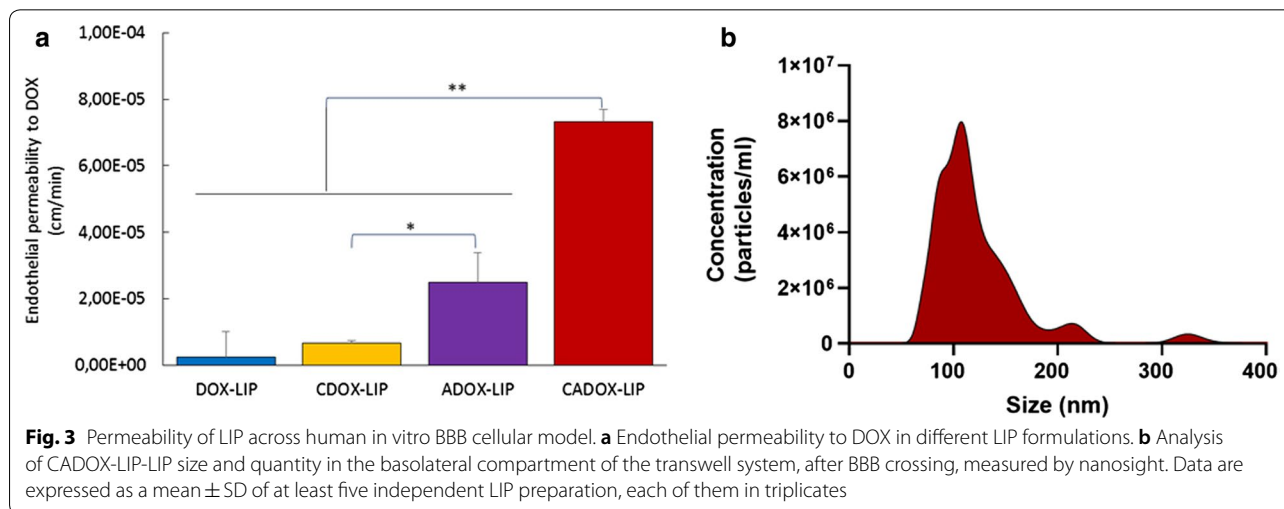
Fig. 2 **a** Graphical representation of the transwell system used to mimic the BBB. **b** TEER values. **c** Fluorescence intensity of LY in the 'brain' side of the transwell system before and after 1 h of incubation with DOX-LIP or CADOX-LIP. **d** hCMEC/D3 cell viability assessed by MTT assay after 24 h of incubation with DOX-LIP or CADOX-LIP. Data are expressed as a mean \pm SD of at least three independent LIP preparation, each of them in triplicates

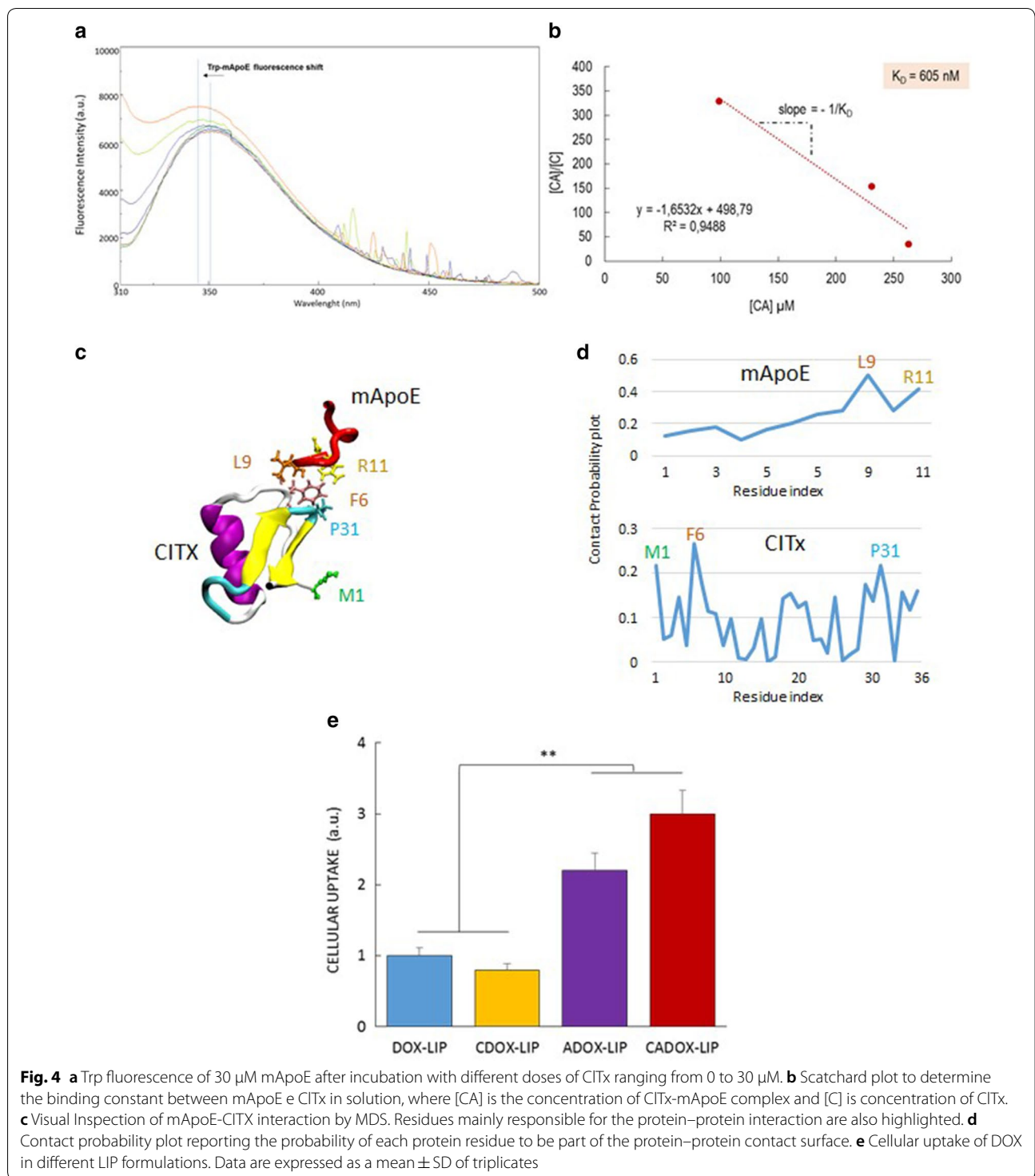
Afterwards, the EP to the different LIP formulations was calculated by measuring over time the amount of DOX in the apical ('blood' side) and in the basolateral ('brain' side) compartment of the transwell system, as reported [20] (Additional file 1). Non-functionalized LIP were not able to transport DOX across the BBB model in a significant amount, while ADOX-LIP allowed a ten-fold increase of EP to DOX, as expected and already reported using a different drug [6]. Unexpectedly, CDOX-LIP did not show a substantial enhancement of DOX passage across the cells monolayer, suggesting that the capability of CITx to permeate the BBB is too weak. This is in agreement with previously published data, showing that CITx is able to cross human endothelial cells by active transcytosis, but this passage is probably not enough to deliver drugs across the BBB [21]. Interestingly, CADOX-LIP were able to boost (~30-fold increase) DOX passage across the BBB, respect to DOX-LIP. Moreover, the increase of DOX passage was 3-times and 10-times higher when incorporated in CADOX-LIP, compared to ADOX-LIP and CDOX-LIP, respectively (Fig. 3a). This suggests the existence of a synergistic effect between the two ligands: CITx and mApoE. Nanosight analysis of LIP passed through the cells monolayers (i.e. in the basolateral compartment of the transwell system) suggested that LIP remain intact after BBB crossing (Fig. 3b), thus excluding the possibility to have followed only the passage of DOX released from LIP. The EP to free DOX was $1.27 \pm 0.2 \times 10^{-3}$ cm/min, a lot greater than when it was incorporated in LIP. This is almost certainly due to its toxic effect on hCMEC/D3 monolayer, as described above. It is important to point out that these results were obtained using endothelial cells grown in a monoculture that does not properly represent the *in vivo* BBB tightness. Unfortunately, we could not perform these experiments in advanced multicellular BBB models

because of the liposomes uptake by astrocytes, which in turn affects the calculation of EP.

In order to investigate the CITx-mApoE synergy in enhancing the LIP passage across the BBB, we evaluated the mApoE-CITx binding by spectrofluorimetry, the type of interaction by computational docking and molecular modelling analysis and the cellular uptake of DOX (Additional file 1). Following the tryptophan (Trp) fluorescence shift of mApoE after binding with increasing amounts of CITx, we observed that mApoE-CITx are able to interact between them, with a calculated affinity constant of $K_a = 1.65 \pm 0.3 \times 10^{-3}$ nM (Fig. 4a, b). Molecular dynamics simulations (MDS) confirmed that the two proteins are able to interact (Fig. 4c) and the residues mainly involved in the interaction are M1, F6, P31 of CITx and L9, R11 of mApoE (Fig. 4d), which are not engaged in reactions for LIP functionalization. However, the interaction is fleeting and not very stable. In fact, it is possible to observe many protein-protein breakdown events in the movie (Additional file 2: Movie S1). This is probably due to the strong electrostatic repulsion between the two ligands, since they are both positively charged sequences.

Finally, comparing the cellular internalization of DOX, its uptake was ~30% higher when incorporated in ADOX or CADOX-LIP (i.e. $7.80 \pm 1.29\%$ and $10.64 \pm 0.74\%$ of administered DOX was measured inside the cells, respectively), respect to DOX-LIP and CDOX-LIP (Fig. 4e). The increased DOX uptake in ADOX-LIP and CADOX-LIP supports the higher BBB permeability of these two formulations. Most interestingly, considering that the extent of DOX uptake between ADOX-LIP and CADOX-LIP is similar, and the functionalization of LIP only with CITx (CDOX-LIP) did not improve the DOX uptake, we can speculate that CITx is not involved in the cellular internalization. Rather it is possible to assert that CITx is

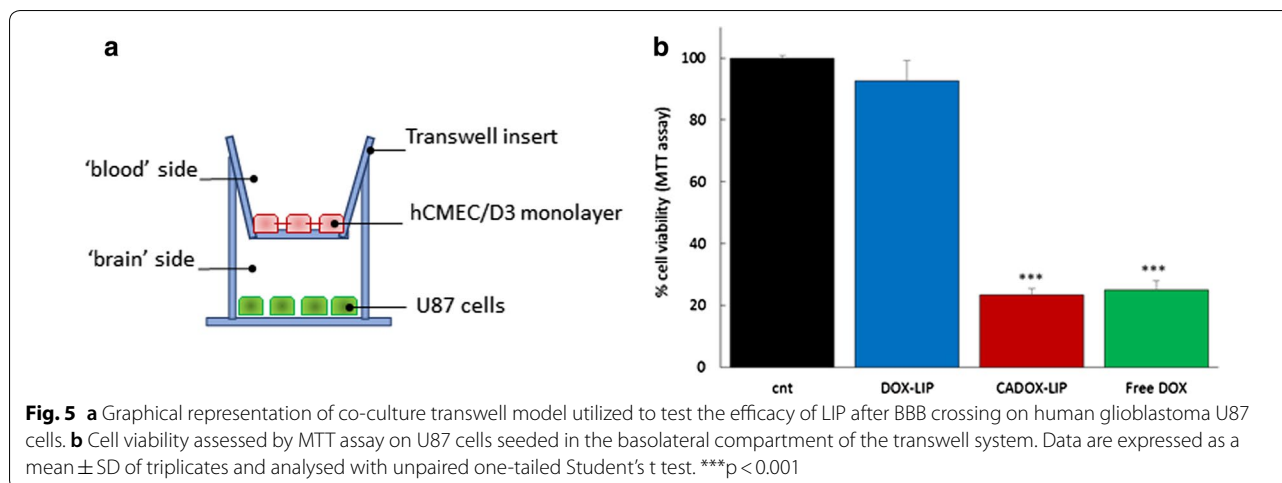




involved in the LIP egress from the basolateral side of endothelial cells.

Taken together these results suggest that there is not a cooperative action of CITx and mApoE in entering the endothelial cells, but there is a synergistic activity in

BBB crossing. In particular, mApoE acts promoting the interaction of CADOX-LIP with the apical side of human endothelial cells, probably via LDL-receptor mediated endocytosis as already demonstrated [5–7], whereas CITx acts by boosting CADOX-LIP outside of the endothelial



cells, promoting their exocytosis through the basolateral side of cell monolayers.

If we consider that the amount of DOX internalized in hCMEC/D3 is similar between ADOX and CADOX-LIP, we can propose differences in the exocytosis process. In this case, a more effective exocytosis would explain the enhanced transcytosis properties of CADOX-LIP, when compared to CDOX-LIP and ADOX-LIP.

The mechanism by which CITx is able to promote exocytosis of CADOX-LIP will deserve further investigation. However, data from literature suggest an interaction of CITx with Annexin A2, which is expressed in vascular endothelial cells, BBB included [22, 23]. Recently, it has been shown that Annexin A2 is involved in the BBB transcytosis processes of CNS pathogens, but not in their cellular adhesion and uptake, suggesting a role of Annexin A2 in the exocytosis pathway across the BBB [24, 25]. Then, CITx may promote the LIP exocytosis interacting with Annexin A2. This mechanism of action is speculative and the demonstration needs further research to deep this issue, for example by testing alternatives to CITx known for their interaction with Annexin A2.

Finally, we tested if the drug embedded in CADOX-LIP was able to retain its ability to target and to suppress the growth of a cellular model of brain tumour. To this purpose, a co-culture transwell system with hCMEC/D3 cells seeded on filter and human U87 glioblastoma cells seeded in the basolateral compartment (Fig. 5a) was prepared. The results (Fig. 5b) showed that after BBB crossing, CADOX-LIP were able to reduce (-76.6%) the viability of U87 cells seeded in the basolateral compartment, as well as free DOX, but without damaging the endothelial monolayer.

This proves the capability of CADOX-LIP to carry active DOX to cancer cells in vitro.

In conclusion, our results reveal the synergistic effect of CITx-mApoE in improving the permeability of drug-loaded LIP across a human cell-based BBB model. These data suggest that the already reported ability of mApoE to cross the BBB can be improved by CITx, which enhances the exocytosis from hCMEC/D3 cell monolayers. On the other side, mApoE can improve the already reported ability of CITx to translocate across the BBB in vitro, enhancing its penetration in endothelial cells. All these data support the use of mApoE-CITx as a dual-targeting ligands to functionalize particles to facilitate the brain delivery of different drug cargoes across the BBB.

Supplementary information

Supplementary information accompanies this paper at <https://doi.org/10.1186/s12951-019-0546-3>.

Additional file 1. Materials and methods.

Additional file 2. Movie of MDS of mApoE-CITx interaction.

Abbreviations

BBB: blood–brain barrier; CNS: central nervous system; mApoE: modified apolipoprotein E-derived peptide; Cys: cysteine; CITx: chlorotoxin; LIP: liposomes; DOX: doxorubicin; Lys: lysine; DSPE-PEG: 1,2-distearoyl-sn-glycero-3-phosphoethanolamine-N-[(polyethylene glycol)-2000]; DOX-LIP: liposomes embedding doxorubicin; ADOX-LIP: liposomes functionalized with mApoE and containing doxorubicin; CDOX-LIP: liposomes functionalized with chlorotoxin and containing doxorubicin; CADOX-LIP: liposomes bi-functionalized with chlorotoxin and mApoE, and containing doxorubicin; TEM: transmission electron microscope; hCMEC/D3: human cerebral microvascular endothelial cells/human brain capillary endothelial cells; TEER: transendothelial electrical resistance; EP: endothelial permeability; LY: lucifer yellow; PDI: polydispersity index; MTT: 3-(4,5-dimethylthiazol-2-yl)-2,5-diphenyltetrazolium bromide; MDS: molecular dynamics simulations; Trp: tryptophan.

Acknowledgements

Not applicable.

Authors' contributions

BF performed the preparation and characterization of all liposomal formulations used and the in vitro experiments on U87 cells. RD set up the cell culture

conditions and BBB crossing experiments. CMP, CML and MK performed cryo-TEM analysis. LR performed the chemical modification of CITx. GG, MAD and AD performed molecular dynamic simulations. SB set up the hCMC/D3 cell culture conditions. FR coordinated the study, designed the experiments, and analysed the data. All authors contributed to the paper revision, read and approved the submitted version, and agree to be accountable for all the aspects of the work. All authors read and approved the final manuscript.

Funding

This work was partially supported by the Grant JPND-COFUND_FP-829-031 (2016-2019) to FR and by H2020-MSCA-ITN-2014_grant agreement no. 642028 to LR.

Availability of data and materials

All data generated or analysed during this study are included in this published article and its supplementary information files.

Ethics approval and consent to participate

Not applicable.

Consent for publication

Not applicable.

Competing interests

The authors declare that they have no competing interests.

Author details

¹ School of Medicine and Surgery, University of Milano-Bicocca, Via Raoul Follereau 3, 20854 Veduggio al Lambro, MB, Italy. ² Department of Drug Delivery, Helmholtz Institute for Pharmaceutical Research Saarland, Saarland University, 66123 Saarbrücken, Germany. ³ Leibniz Institute for New Materials, Campus D2 2, 66123 Saarbrücken, Germany. ⁴ Bio Organic Chemistry Laboratory, Department of Biotechnology and Biosciences, University of Milano-Bicocca, Via Raoul Follereau 3, 20854 Veduggio al Lambro, MB, Italy. ⁵ Istituto Dalle Molle di Studi Sull'Intelligenza Artificiale (IDSIA), Scuola Universitaria Professionale Della Svizzera Italiana (SUPSI), Università Della Svizzera Italiana (USI), Manno, Switzerland. ⁶ Department of Mechanical and Aerospace Engineering (DIMEAS), Politecnico di Torino, Corso Duca degli Abruzzi 24, 10128 Turin, Italy. ⁷ U1016, Institut Cochin, Inserm, Paris, France.

Received: 2 September 2019 Accepted: 27 October 2019

Published online: 11 November 2019

References

- Banks WA. From blood-brain barrier to blood-brain interface: new opportunities for CNS drug delivery. *Nat Rev Drug Disc.* 2016;15:275–92.
- Hawkins BT, Davis TP. The blood-brain barrier/neurovascular unit in health and disease. *Pharmacol Rev.* 2005;57:173–85.
- Villaseñor R, Lampe J, Schwabinger M, Collin L. Intracellular transport and regulation of transcytosis across the blood-brain barrier. *Cell Mol Life Sci.* 2019;76:1081–92.
- Sharma G, Sharma AR, Lee SS, Bhattacharya M, Nam JS, Chakraborty C. Advances in nanocarriers enabled brain targeted drug delivery across blood brain barrier. *Int J Pharm.* 2019;559:360–72.
- Re F, Cambianica I, Sesana S, Salvati E, Cagnotto A, Salmons M, Couraud PO, Moghimi SM, Masserini M, Sancini G. Functionalization with ApoE-derived peptides enhances the interaction with brain capillary endothelial cells of nanoliposomes binding amyloid-beta peptide. *J Biotechnol.* 2010;156:341–6.
- Re F, Cambianica I, Zona C, Sesana S, Gregori M, Rigolio R, La Ferla B, Nicotra F, Forloni G, Cagnotto A, Salmons M, Masserini M, Sancini G. Functionalization of liposomes with ApoE-derived peptides at different density affects cellular uptake and drug transport across a blood-brain barrier model. *Nanomedicine.* 2011;7:551–9.
- Bana L, Minniti S, Salvati E, Sesana S, Zambelli V, Cagnotto A, Orlando A, Cazaniga E, Zwart R, Scheper W, Masserini M, Re F. Liposomes bi-functionalized with phosphatidic acid and an ApoE-derived peptide affect A β aggregation features and cross the blood-brain-barrier: implications for therapy of Alzheimer disease. *Nanomedicine.* 2014;7:1583–90.
- Balducci C, Mancini S, Minniti S, La Vitola P, Zotti M, Sancini G, Mauri M, Cagnotto A, Colombo L, Fiordaliso F, Grigoli E, Salmons M, Snellman A, Haaparanta-Solin M, Forloni G, Masserini M, Re F. Multifunctional liposomes reduce brain β -amyloid burden and ameliorate memory impairment in Alzheimer's disease mouse models. *J Neurosci.* 2014;34:14022–31.
- Zlokovic BV. Neurovascular pathways to neurodegeneration in Alzheimer's disease and other disorders. *Nat Rev Neurosci.* 2011;12:723–38.
- Dal Magro R, Cox A, Zambelli V, Mancini S, Masserini M, Re F. The ability of liposomes, tailored for blood-brain barrier targeting, to reach the brain is dramatically affected by the disease state. *Nanomedicine.* 2018;13:585–94.
- DeBin JA, Maggio JE, Strichartz GR. Purification and characterization of chlorotoxin, a chloride channel ligand from the venom of the scorpion. *Am J Physiol.* 1993;264:361–9.
- Ojeda PG, Wang CK, Craik DJ. Chlorotoxin: structure, activity, and potential uses in cancer therapy. *Biopolymers.* 2016;106:25–36.
- Lyons SA, O'Neal J, Sontheimer H. Chlorotoxin, a scorpion-derived peptide, specifically binds to gliomas and tumors of neuroectodermal origin. *Glia.* 2002;39:162–73.
- Cohen-Inbar O, Zaaroor M. Glioblastoma multiforme targeted therapy: the chlorotoxin story. *J Clin Neurosci.* 2016;33:52–8.
- Tamborini M, Locatelli E, Rasile M, Monaco I, Rodighiero S, Corradini I, Franchini MC, Passoni L, Matteoli M. A combined approach employing chlorotoxin-nanovectors and low dose radiation to reach infiltrating tumor niches in glioblastoma. *ACS Nano.* 2016;10:2509–20.
- Xiang Y, Liang L, Wang X, Wang J, Zhang X, Zhang Q. Chloride channel-mediated brain glioma targeting of chlorotoxin-modified doxorubicin-loaded liposomes. *J Control Release.* 2011;3:402–10.
- Uster PS, Allen TM, Daniel BE, Mendez CJ, Newman MS, Zhu GZ. Insertion of poly(ethylene glycol) derivatized phospholipid into pre-formed liposomes results in prolonged in vivo circulation time. *FEBS Lett.* 1996;386:243–6.
- Gaillard PJ, Appeldoorn CCM, Dorland R, van Kregten J, Manca F, Vugts DJ, Windhorst B, van Dongen GAMS, de Vries HE, Maussang D, van Tellingen O. Pharmacokinetics, brain delivery, and efficacy in brain tumor-bearing mice of glutathione pegylated liposomal doxorubicin (2B3-101). *PLoS ONE.* 2014;9:e82331.
- Mancini S, Balducci C, Micotti E, Tolomeo D, Forloni G, Masserini M, Re F. Multifunctional liposomes delay phenotype progression and prevent memory impairment in a presymptomatic stage mouse model of Alzheimer disease. *J Control Release.* 2017;258:121–9.
- Cecchelli R, Dehouck B, Descamps L, Fenart L, Buée-Scherrer VV, Duhem C. In vitro model for evaluating drug transport across the blood-brain barrier. *Adv Drug Deliv Rev.* 1999;36:165–78.
- Díaz-Perlas C, Varese M, Guardiola S, García J, Sánchez-Navarro M, Giralte E, Teixidó M. From venoms to BBB-shuttles. MiniCTX3: a molecular vector derived from scorpion venom. *Chem Commun.* 2018;54:12738–41.
- Kesavan K, Ratliff J, Johnson EW, Dahlberg W, Asara JM, Misra P, Frangioni JV, Jacoby DB. Annexin A2 is a molecular target for TM601, a peptide with tumor-targeting and anti-angiogenic effects. *J Biol Chem.* 2010;285:4366–74.
- Maule F, Bresolin S, Rampazzo E, Boso D, Della Puppa A, Esposito G, Porcù E, Mitola S, Lombardi G, Accordi B, Tumino M, Basso G, Persano L. Annexin 2A sustains glioblastoma cell dissemination and proliferation. *Oncotarget.* 2016;7:54632–49.
- Na Pombreja S, Salemi M, Phinney BS, Gelli A. The metalloprotease, Mpr1, engages annexin A2 to promote the transcytosis of fungal cells across the blood-brain barrier. *Front Cell Infect Microbiol.* 2017;7:296.
- Fang W, Fa ZZ, Xie Q, Wang GZ, Yi J, Zhang C, Meng GX, Gu JL, Liao WQ. Complex roles of annexin A2 in host blood-brain barrier invasion by *Cryptococcus neoformans*. *CNS Neurosci Ther.* 2017;4:291–300.

Publisher's Note

Springer Nature remains neutral with regard to jurisdictional claims in published maps and institutional affiliations.