

A Multi-stack Simulation Framework for Vehicular Applications Testing

*Original*

A Multi-stack Simulation Framework for Vehicular Applications Testing / Malinverno, Marco; Raviglione, Francesco; Casetti, CLAUDIO ETTORE; Chiasserini, Carla Fabiana; Manges-Bafalluy, Josep; Requena-Esteso, Manuel. - STAMPA. - (2020), pp. 17-24. ( International Symposium on Design and Analysis of Intelligent Vehicular Networks and Applications (DIVANet'20) Spain November 2020) [10.1145/3416014.3424603].

*Availability:*

This version is available at: 11583/2845615 since: 2020-11-15T13:28:26Z

*Publisher:*

ACM

*Published*

DOI:10.1145/3416014.3424603

*Terms of use:*

This article is made available under terms and conditions as specified in the corresponding bibliographic description in the repository

*Publisher copyright*

ACM postprint/Author's Accepted Manuscript, con Copyr. autore

(Article begins on next page)

# A Multi-stack Simulation Framework for Vehicular Applications Testing

Marco Malinverno  
Politecnico di Torino - CNIT  
Torino, Italy  
marco.malinverno@polito.it

Francesco Raviglione  
Politecnico di Torino - CNIT  
Torino, Italy  
francesco.raviglione@polito.it

Claudio Casetti  
Politecnico di Torino - CNIT  
Torino, Italy  
claudio.casetti@polito.it

Carla-Fabiana Chiasserini  
Politecnico di Torino - CNIT -  
CNR-IEIIT  
Torino, Italy  
carla.chiasserini@polito.it

Josep Mangués-Bafalluy  
CTTC  
Barcelona, Spain  
josep.mangués@cttc.cat

Manuel Requena-Esteso  
CTTC  
Barcelona, Spain  
manuel.requena@cttc.es

## ABSTRACT

The vast majority of vehicular applications leverage vehicle-to-everything communications (V2X) to increase road safety, optimize the available transportation resources, and improve the user experience. Because of the complexity and the high deployment costs of vehicular applications, it is usually convenient to extensively test them by simulation. We present an open-source simulation framework for the ns-3 simulator, featuring state-of-the-art vehicular communication models, in which the mobility is managed by the SUMO (Simulation of Urban MObility) simulator. Unlike other simulation frameworks, where the user is mostly limited to a single communication stack, our framework unifies multiple stacks under a single open-source repository. The framework is designed to make it easier to configure the communication stacks, and to enable a fast and easy deployment of vehicular applications. It comes with the support for centralized and distributed vehicular network architectures, embedding the IEEE 802.11p, 3GPP C-V2X Mode 4 and LTE communication stacks, and with vehicular messages dissemination stacks compliant with ETSI standards. We also present two sample applications thought to show the potentiality of the framework, namely an *area speed advisory* and an *emergency vehicle alert*.

## CCS CONCEPTS

• **Networks** → *Network protocols*; **Network simulations**; **Network performance analysis**; • **Computing methodologies** → **Model development and analysis**.

## KEYWORDS

Vehicular Networks, V2X, ns-3, SUMO, 802.11p, C-V2X, ETSI Facilities layer

### ACM Reference Format:

Marco Malinverno, Francesco Raviglione, Claudio Casetti, Carla-Fabiana Chiasserini, Josep Mangués-Bafalluy, and Manuel Requena-Esteso. 2020. A Multi-stack Simulation Framework for Vehicular Applications Testing. In *Proceedings of The 23rd International Conference on Modeling, Analysis and Simulation of Wireless and Mobile Systems (MSWiM'20)*. ACM, New York, NY, USA, 8 pages. <https://doi.org/10.1145/nnnnnnn.nnnnnnn>

## 1 INTRODUCTION

Cooperative Intelligent Transport Systems (C-ITS) have been identified by private and public stakeholders as providing a great potential to enable the technologies required by the most ambitious vehicular applications, by allowing direct and fast Vehicle-to-Everything (V2X) communications. Two main direct communication standards have been developed to enable C-ITS services: IEEE 802.11p, the WiFi proposal for vehicular networks, and 3GPP C-V2X, coming instead from the cellular world. Both technologies can operate in the 5.9 GHz band (5850-5925 MHz), which has been reserved for vehicular communications in Europe.

The debate on which of the two protocol stacks is best suited to meet market needs is still open in the scientific community, where some argue that the solution proposed by 3GPP provides higher performance in terms of throughput and reliability. Furthermore, the presence of two interfaces, namely *PC5* for Vehicle-to-Vehicle (V2V) communications, and *Uu* for communication with the cellular infrastructure, suggests that C-V2X is more suitable to enable reliable Vehicle-to-Network (V2N) services, also by taking advantage of the commercial spectrum of cellular network to access cloud-based applications.

Conversely, supporters of IEEE 802.11p maintain that C-V2X is still in its early development stage, with fewer on-field validation tests with respect to 802.11p. As a matter of fact, the IEEE solution was first approved in 2009 and later amended in 2016 and, in the meantime, there have been several field trials such as the ones in [5] and [13]. Several semiconductor companies have already designed and tested 802.11p-compliant products, and several carmakers are deploying them in their vehicles [21].

In this paper, we present a simulation framework for fast and easy deployment of V2I (Vehicle-to-Infrastructure), V2N and V2V-based applications, which allows the selection of different communication protocols (namely IEEE 802.11p, 3GPP C-V2X, and 3GPP LTE) and provides the tools that are needed to set up basic vehicular communication scenarios using state-of-the-art simulation models. It features a standard-compliant ASN.1 (Abstract Syntax Notation 1) encoder/decoder for ETSI vehicular messages, and it is based on ns-3 (network simulator 3) and SUMO (Simulation of Urban MObility), with the former providing the model of the involved communication stacks, and the latter managing vehicle mobility. The aim of this project is to support other researchers by providing them with an open-source framework [1] that contains the communication models needed to recreate centralized V2I/V2N-based services, and purely distributed V2V-based scenarios.

The rest of the paper is structured as follows: Section 2 reviews the state of the art on literature work, comparing the available V2X technologies and already released VANET simulation frameworks. Section 3 presents our proposed ns-3-based simulation framework, and Section 4 describes two sample applications we developed on top of our framework. Then, in Section 5, the main simulation results are discussed and, finally, Section 6 provides some final remarks.

## 2 RELATED WORK

A considerable amount of literature on the comparison between 802.11p and C-V2X, under multiple aspects, has been published in several works, such as in [2, 11, 14, 22, 24]. Whilst some of the high-level analyses, such as [24], try to keep a neutral position and to show the great potential and possibilities offered by the two communication protocols, as the studies go into more technical performance analysis, there is a vast majority of them suggesting that C-V2X outperforms 802.11p.

As an example, in [22] Vukadinovic *et. al.* show the superior performance, in terms of reliability, of the 3GPP-proposed solution. The analysis has been made taking into account truck platooning as baseline application. In [14], a simulation-based analysis points out the better performance of C-V2X both in terms of throughput and at the MAC layer.

The superior performance of C-V2X is also highlighted in [2], where the general radio link layer improvements are associated to better market conditions, stating that C-V2X may leverage the maturity of the cellular solutions standardized by 3GPP.

The advocates of 802.11p, such as [11], stress the number of tests drive already undergone by the IEEE-proposed solution, thus claiming it to be more mature and with more readiness towards its deployment. Furthermore, several works recognize that 802.11p outperforms the current implementations of C-V2X in terms of end-to-end latency [14], while others, such as [22], point out still open problems of C-V2X such as SPS persistent collisions.

The aim of this work is to provide a new tool to determine which protocol or implementation is best suited for centralized and distributed vehicular applications, and maybe clear some of the doubts still open in the scientific community.

Among the V2X-dedicated network simulators including the complete protocol stack of each communicating entity, the Veins framework [18] is surely one of the most established. It features a bidirectional coupling between the urban mobility simulator SUMO and the network simulator OMNeT++ [15], via the so-called *TraCI* (Traffic Control Interface). Beside its native 802.11p implementation, several other projects, such as SimuLTE [20], have been used to extend the Veins capabilities with accurate LTE models. Veins has also been extended by the Artery and Vanetza projects [17], which provide Veins with a fully functional ETSI ITS-G5 model and a flexible platform for VANET application prototyping.

In this project, the TraCI interface has been used to couple the SUMO functionalities with ns-3, by using a modified version of the module available in [4]. Unlike the other already available simulation frameworks, where the user is mostly

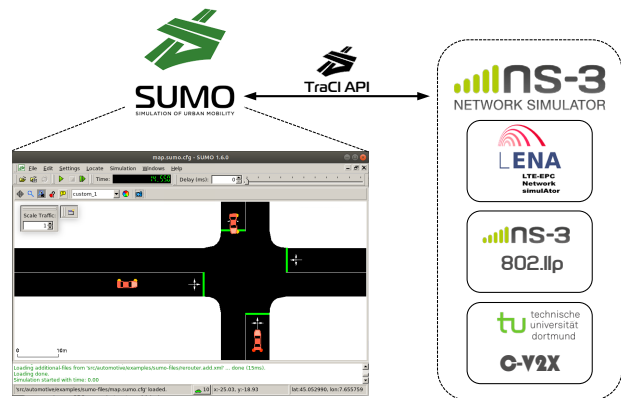


Figure 1: Main components of our simulation framework.

limited to a single communication stack, we gathered a state-of-the-art V2X ns-3-based communication framework under a single open-source repository. In this way, the user can test any kind of C-ITS application and easily change the underlying communication technology, in order to better understand which is the best solution to adopt for each relevant V2X use case. Moreover, to the best of our knowledge, this is the first ns-3 simulation framework to implement the CA (Cooperative Awareness) and DEN (Decentralized Environmental Notification) basic services, as mandated by ETSI.

The choice of ns-3 as a basic simulation platform was also driven by several advantages it provides, including the huge community behind it and the stability of the code after many years of improvements.

### 3 SIMULATION FRAMEWORK

Our simulation framework is composed by two different pieces of software, that interact among each other and together provide a flexible platform for application testing:

- SUMO v1.6.0 [12], which allows users to model the positions of the nodes of the network (i.e., in our case, the vehicles) following realistic mobility patterns and dynamics. SUMO enables the creation of arbitrarily complex vehicular scenarios, and the interaction with the simulation elements using the well-known TraCI API. SUMO is also providing a GUI to the end-user, making it possible to visualize and interact with the simulations in a much easier way than just launching them and retrieving the final results.
- ns-3 [19] v3.29, an open-source discrete-event simulator, which allows users to model all the aspects of the communication among the various entities, including the involved network stacks.

The elements of our framework are schematized in Figure 1, in which it is also possible to see the SUMO GUI during the execution of a simulation, and the different ns-3 modules which can be selected for the V2X application testing and evaluation.

In our framework, the message exchange is based on standardized ITS messages, defined by ETSI. Several different

types of message, with the aim of facilitating the exchange of data between moving vehicles, are currently defined. The most commonly encountered ones, in vehicular networks, are the so-called CAM (Cooperative Awareness Message) and DENM (Decentralized Environmental Notification Message). The first ones are messages which are periodically broadcasted by vehicles, with a frequency up to 10 Hz, containing information about the position, speed, heading and other relevant variables coming from the current status and attributes of the sender.

The second ones are instead event-based messages, which are normally sent to disseminate the information related to road hazards, possible dangerous conditions or generic events which are of potential interest for the receivers [8, 10].

#### 3.1 V2I/V2N Communication Models

In the V2I/V2N models, vehicles are configured to periodically send CAMs towards a server that collects them, runs the application logic, and sends DENMs back to vehicles, when needed.

In this case, two communication models can be used to enable the connectivity of the vehicles towards a centralized service. Depending on which one is selected, the resulting scenario can be seen as V2N or V2I. The two models are:

- (1) LTE, using LENA [3] as simulation framework, in which a classic LTE network is established, with the vehicles acting as UEs (User Equipment) connected to the eNB (eNodeB), that is in turn connected to the EPC (Evolved Packet Core) through the S1-U interface. The EPC implements the SGW (Serving Gateway) and PGW (Packet Data Network Gateway) blocks. The PGW is connected to a remote host that runs the application server logic. This communication can be seen as V2N, since the UE is connected to a service provider that can be ideally everywhere in the Internet. As far as the control-plane is concerned, LENA implements a model for the MME (Mobility Management Entity) node, that is connected to the eNB via S1-AP interface, and to the SGW-PGW block through the S11 interface. The main functions of the MME include the session initialization

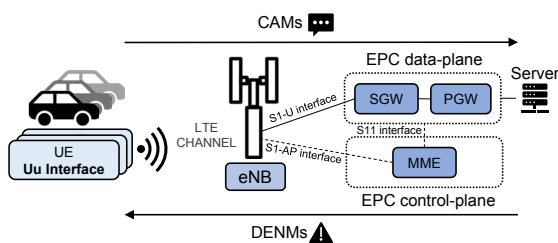


Figure 2: V2N LTE-based framework.

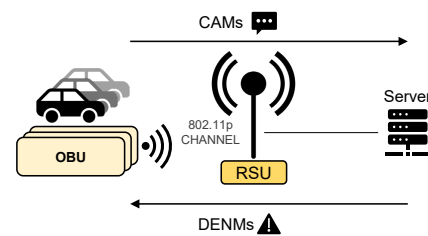


Figure 3: V2I 802.11p WAVE-based framework.

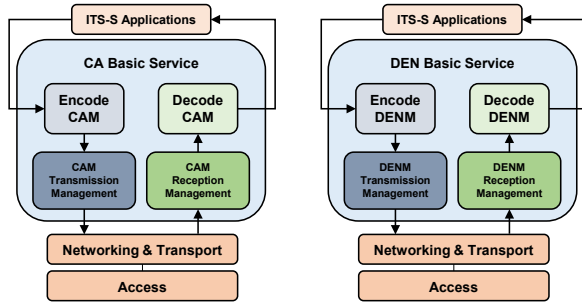


Figure 4: CA and DEN Basic Services implemented inside an ITS Station (ITS-S).

and bearer management. The resulting configuration can be seen in Figure 2.

- (2) 802.11p, using the WAVE (Wireless Access in Vehicular Environment) model available in ns-3. In this case, vehicles are equipped with OBUs (On Board Units), and communicate with a remote host that is placed behind a RSU (Road Side Unit). Due to the proximity between the clients and the server, and due to the fact that the clients and server are in the same subnet, we can define it as a V2I communication. The 802.11p WAVE framework is depicted in Figure 3.

### 3.2 V2V Communication Models

In the V2V models, vehicles are configured to broadcast CAMs and DENMs directly among themselves, using a direct communication. In this case, the application logic is deployed inside the vehicles, in a purely distributed fashion.

In order to enable such a configuration, two different communication models can be selected:

- (1) C-V2X, using the framework proposed by Eckerman et al., [6], in which a C-V2X Mode 4 network is modeled.

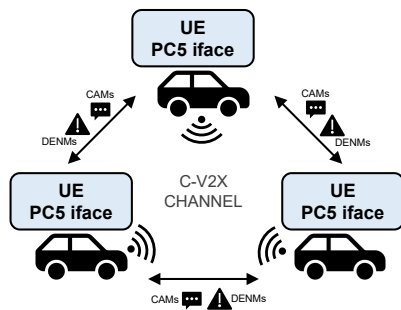


Figure 5: V2V C-V2X-based framework.

In this model, the vehicles communicate through the PC5 interface and directly exchange messages with their peers through sidelink (SL), without relying on the eNB. The resulting framework models an out-of-coverage communication scenario, and is depicted in Figure 5.

- (2) 802.11p, using the WAVE stack available in ns-3. As in the V2I scenario, vehicles are equipped with OBUs, but in this case they broadcast CAMs and DENMs among themselves. The V2V 802.11p WAVE-based communication logic is depicted in Figure 6.

### 3.3 ETSI Facilities Layer

In its ITS architecture, ETSI has defined a Facilities layer [7] to support the distribution and processing of Application messages. The implementation of ETSI-compliant features of the Facilities layer in ns-3, adds an important aspect to the simulation framework, namely, the possibility to be used in hardware-in-the-loop scenarios. The messages generated in ns-3 can thus be received and decoded by real V2X devices, which in turn can interact with simulated entities that have the possibility to decode standard-compliant messages.

These Facilities, called CA and DEN Basic Services, manage the transmission and reception of CAM and DENM messages, and are implemented in our framework following the ETSI standards on ITS messages [8–10].

ASN.1, which is used to encode CAM and DENM messages, allows the representation of complex data structures that can be read by any platform. This notation is completely programming language-agnostic, allowing different platforms, with different architectures, to exchange information.

Within the CA and DEN Basic Services, two modules for ASN.1 CAMs and DENMs encoding and decoding were created for our framework. These modules are in charge of receiving ASN.1-encoded messages, extracting the relevant information, and providing the ITS-S applications with the

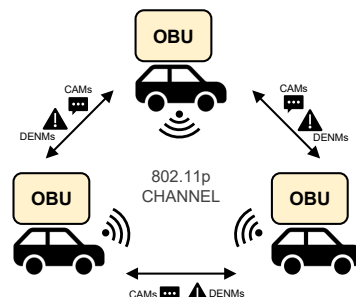


Figure 6: V2V 802.11p WAVE-based framework.

requested data. Moreover, they should also provide the overlying applications with functions to encode and send ASN.1 messages to the network interface used for communication.

The open-source tool *asn1c* [23] is used to generate the encoding and decoding functions of the ASN.1 messages.

In Figure 4, we depicted the logics implemented by the CA and DEN Basic Service at the Facilities layer. In particular, the CA Basic Service allows the ITS-S applications to encode CAM messages, and, through the CAM Transmission Management, it internally handles the CAM dissemination logic. Once a CAM is ready to be sent, the CA Basic Service delivers it to the lower layers of the communication stack. At the reception side, the CA Basic Service should manage the CAM reception from the underlying layers, and decode the ASN.1-encoded CAM messages. Finally, the information included in the CAM should be delivered to the requesting ITS-S applications. The DEN Basic Service provides similar features to the ITS-S applications sending and receiving DENM messages.

Although not all the features requested by ETSI (such as security, LDM, or GeoNetworking) are present in our model so far, the core functionalities of messages encoding/decoding in the Facilities layer have been implemented.

## 4 APPLICATIONS

The simulation framework presented in this work comes with two sample applications, one for the V2I/V2N case, developed with a centralized client/server architecture, and one for the V2V case, developed in a distributed fashion. Each of them has been developed with the aim to showcase the potentiality of the framework, and feature ETSI standard-compliant message encoding and decoding.

### 4.1 V2I/V2N Application: area speed advisory

The application proposed for the centralized V2I/V2N communication models is based on a client/server architecture. As far as the LTE communication is concerned, the server is placed in a remote host connected to the PGW, while it is located in a host directly connected to the RSU when IEEE WAVE is adopted. The main difference between the two communication models, from the application point of view, resides in the higher end-to-end latency experienced when using LTE: in this case, indeed, both CAMs and DENMs need to pass through the EPC before they are delivered, while the usage of 802.11p allows the server to be directly behind the RSU, just one hop away from the clients.

The map used in this context includes two road crossings connected through a central two-way street, and is depicted in Figure 7. The network access point (eNB for LTE and RSU for 802.11p) is placed at the center of the map, with sufficient

coverage to ensure connectivity to all vehicles traveling in the simulated area.

The core logic of the application is to divide the map in two different zones: the first zone is the central one, comprising the two crossings, in which the maximum allowed speed is 25 km/h. The second zone is instead the outer one, where the vehicles are allowed to reach a speed up to 100 km/h. The server monitors the position of the vehicles, by reading the CAMs, and warns them if they enter an area with different speed restrictions. Vehicles are configured to periodically send CAM messages, which are received by the network access point and forwarded to the server. The server, aware of the boundaries of the two areas, analyzes the position of the vehicles. Whenever it realizes that a vehicle is moving from a zone to another, it sends a DENM message, warning the driver about the necessity of reducing his/her speed or the about possibility to increase it.

Figure 7 shows the V2I/V2N sample application running in SUMO, with ns-3 managing the communication and application logic. In particular, it is possible to see 4 vehicles, two in the high-speed area (*veh1*, *veh2*) and other two in the low-speed area (*veh3* and *veh4*). In this case, once a vehicle receives a DENM informing the driver to increase the speed, ns-3 tells SUMO (through TraCI) to change the vehicle color to green and increase its speed. Conversely, whenever a vehicle moves from the high-speed to the low-speed area, its color is changed to red and its speed is reduced.

In this scenario, CAMs are sent as unicast from the vehicles to the server running the application logic. At the same time,

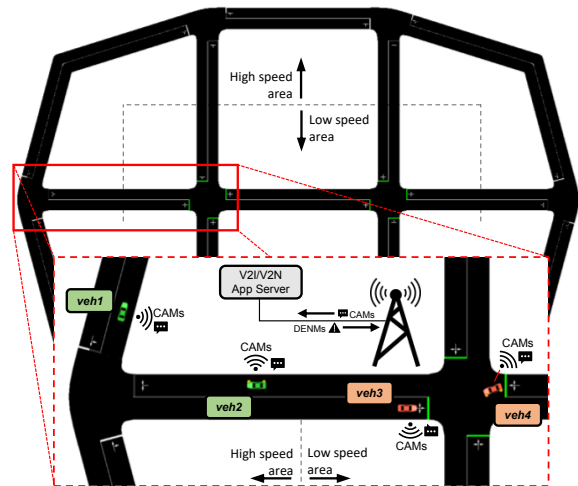


Figure 7: Two screenshots from SUMO-GUI, showing the map and the operation of the sample application for the V2I/V2N framework.

the server generates and sends unicast DENMs to notify the vehicles changing speed area.

## 4.2 V2V Application: emergency vehicle alert

Other than the aforementioned V2I/V2N application for the related models, the V2V models are showcased through an Emergency Vehicle (EV) use case, supporting both IEEE 802.11p and 3GPP C-V2X Mode 4 for vehicle connectivity and relying on ETSI CAM and DENM messages. In particular, in either case, ETSI messages are directly exchanged between vehicles. As in the previous case and in accordance to the standard, all vehicles exchange CAM messages to inform nearby nodes about their current status. The scenario also includes, however, the presence of EVs, which should be able to travel without being slowed down by the other vehicles.

An EV could be an ambulance, a police motorcycle, or a firefighter vehicle. In particular, we modeled a scenario in which two EVs are periodically sending DENM messages to all nearby vehicles. Upon reception of a relevant message (i.e., a DENM message from an approaching EV), a normal vehicle will try to limit its hindrance to the EV. If it is travelling on the same lane as the EV, it will speed up, and try to change lane as soon as possible. If on a different lane, it will slow down. In this way, the EV will be able to pass a normal vehicle without being forced to reduce its speed.

The map used in this case represents an urban scenario, where normal vehicles have a maximum speed varying between 30 km/h and 60 km/h and EVs can, instead, travel up to 75 km/h; a circular road segment is involved, with two lanes for each direction of travel.

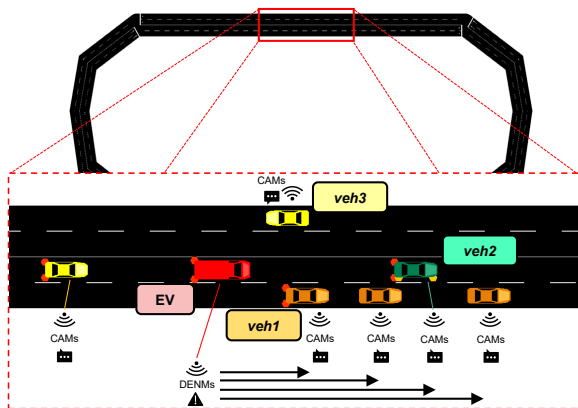


Figure 8: Two screenshots from SUMO-GUI, showing the map and the operation of the sample application for the V2V framework.

A screenshot from SUMO while running the application is presented in Figure 8. In particular, the red vehicle is an EV broadcasting DENMs, while the orange vehicles (like *veh1*) are nodes that have correctly received and parsed a DENM from the EV and are slowing down to be safely overtaken. The green vehicle (*veh2*) is instead a node traveling on the same lane as the EV. It is thus trying to accelerate to change lane as soon as possible and let the EV go by. Finally, the yellow vehicles (such as *veh3*) are cars which do not need to react to the approaching emergency vehicle, as they may be traveling in the opposite direction, they might not be directly interested by the EV trajectory or they may be still too far away.

## 5 SIMULATION RESULTS

Both applications are evaluated in this section. As the main goal of this paper is not to compare in details the main communication technologies (namely, LTE and 802.11p for the V2I/V2N case and C-V2X and 802.11p for the V2V case), but to show the potentialities of the complete framework, we focus on algorithm-based metrics, leaving a more detailed evaluation of the technology-related KPIs, such as latency and Packet Delivery Ratio, for a future work. Such a detailed evaluation would require, in fact, extensive simulations over selected use cases, varying the several parameters of the involved communication stacks.

### 5.1 V2I/V2N Application

We evaluated the performance of the V2I/V2N scenario focusing on a safety situation. We introduced two modified traffic lights always showing a green light to incoming vehicles. In this way, the vehicles will reach the intersections without slowing down due to the traffic lights, and, in some cases, they will be unable to stop and avoid a collision. We then observed the average number of collisions with and without our area speed advisory system.

Since our goal is to provide a sample application to show the potentialities of the framework, a collision avoidance scheme, in this context, has not been implemented; this solution also allows us to define a metric (i.e., the number of collisions when no traffic lights are regulating the traffic) to evaluate our sample application, both when a speed reduction is mandated through DENMs and when, instead, the algorithm is disabled and all the nodes can keep their maximum speed.

In order to evaluate the application, we tested it with several scenarios, involving different numbers of vehicles. In particular, we varied them between 5 and 40 vehicles, and we plotted the results as a function of the number of vehicles per kilometer. The vehicles could reach a maximum speed of

100 km/h, and for each density we ran 100 simulations, each lasting 200 s.

The results are plotted in Figure 9, in which the different vehicle densities are reported on the x axis and the average number of collisions at road crossings on the y axis. For each value, the 95% confidence interval on all the simulations is plotted. The results show the benefits of the speed control application on the total number of road crossing collisions. In particular, the simple application developed on top of our framework, which basically slows down the vehicles approaching the intersections, was able to avoid a large number of collisions. The average number of reported collisions, when the algorithm is disabled, increases up to 8 collisions per simulation, when the density is between 11 and 12 veh/km. Then, due to the increased traffic, and to the consequent drop in the average vehicles speed, the total number of collisions starts to decrease. Instead, when the algorithm is enabled, the number of collisions is always low, with an average of less than 1 per simulation, even when the density is high.

## 5.2 V2V Application

As the main metric for the assessment of the V2V-based application, we focused on the average speed of the EV, under different traffic conditions, comparing the case in which the alerting is enabled (i.e., DENMs are sent by the EVs), either through 802.11p or C-V2X, and the one in which it is disabled.

As before, in order to properly evaluate the proposed application, we considered different vehicle densities, ranging from a total of 3 veh/km up to more than 13 veh/km. For each density we ran 100 simulations, each lasting 200 seconds, always using different mobility traces, each one including two EVs, one per travel direction. The speed of the two EVs has been averaged over all the simulations.

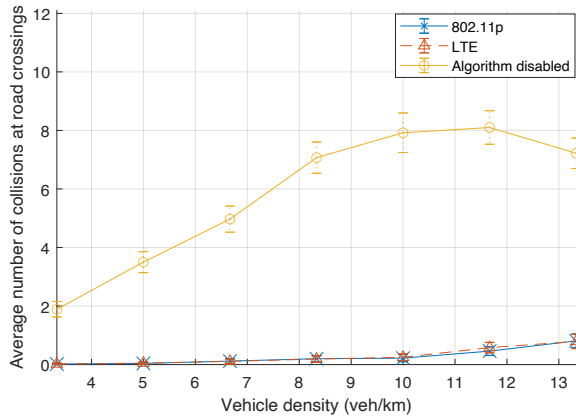


Figure 9: Results of the V2I/V2N simulation.

The results are depicted in figure 10, in which the different vehicle densities are reported on the x axis and the measured average speed on the y axis. For each value, 95% confidence intervals over the 100 simulations are reported.

As is possible to infer, the results show how the proposed solution can be an effective, yet simple, algorithm for an EV use case, and how our framework can be effectively used to assess standard compliant applications for V2V. Indeed, the EVs are almost always able to keep their maximum speed when they are sending DENMs to nearby vehicles, no matter the traffic density or pattern. Instead, when no DENMs are sent and the vehicle density starts increasing, a quite consistent speed drop (sometimes more than 10 km/h) can be observed.

It is also possible to notice how the selected V2V technology does not make a significant difference when it comes to the algorithm effectiveness, at least as long as all the needed DENMs are correctly received by the involved vehicles.

## 6 CONCLUSIONS

In this work, we presented an open-source framework for fast and easy deployment of V2X applications. The framework, which is based on the ns-3 and SUMO simulators, features state-of-the-art models for V2X communications, and standard-compliant vehicular message dissemination stacks, including the ETSI CA and DEN Basic Services. The framework provides flexibility in the application configuration, and can be used to easily switch the communication technology and the network architecture.

Thanks to the interaction with an up-to-date version of sumo-gui (i.e. SUMO's graphical user interface), it provides an easy way to visualize the simulations and, possibly, also debug them. ns-3 is also representing a stable and well-maintained network simulator, constituting a solid base for our V2X simulation framework, thanks to its community

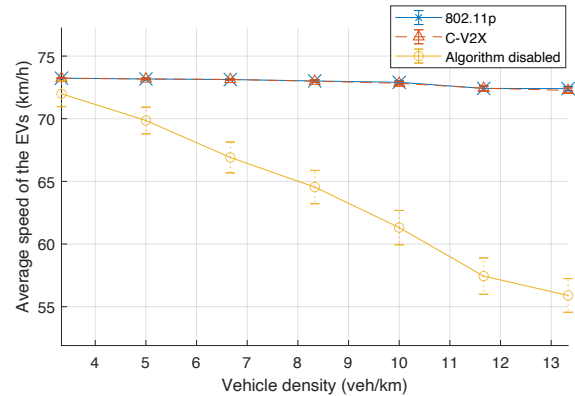


Figure 10: Results of the V2V simulation.

and to the several state-of-the-art models which has been and are currently being developed, such as the 5G version of LENA [16].

Two sample applications are presented: *area speed advisory* as a centralized service, and *emergency vehicle alert* as a distributed service. They represent a baseline for the user, which can use them as examples to build his or her own scenarios, leveraging on functions which simplify the management and usage of the ETSI CA and DEN Basic Services.

The simulation results show, for both applications, a significant improvement in the measured KPIs. In particular, the *area speed advisory* application increases the safety at road intersections, by forcing vehicles to slow down when approaching more critical road segments. The application has been proven to avert a high percentage of collisions, even in a scenario in which the vehicles approach the crossings without slowing down. The *emergency vehicle alert* application, instead, is effective in giving priority to particular classes of vehicles. Namely, it allows them to keep a higher average speed, with respect to the case in which the service is not active. In our toy scenario, two emergency vehicles were able to keep almost their maximum speed even when the density of the other vehicles was relatively high.

Those applications, although very simple in their core logic, demonstrate the potentiality of our open-source simulation framework, and the importance that vehicular applications will have in the future of ITS.

## ACKNOWLEDGMENTS

This work was supported by Spanish MINECO grant TEC2017-88373-R (5G-REFINE) and by Generalitat de Catalunya grant 2017 SGR 1195, by the EU Commission through the 5GROWTH Project under grant 856709 and through the Horizon 2020 project 5G-CARMEN under grant 825012, and by the CARS Interdepartmental Lab at Politecnico di Torino.

## REFERENCES

- [1] 2020. V2X-based Vehicular Application Framework. <https://github.com>. (2020). The framework code will be made available at the time of the paper publication.
- [2] 5GAA. 2017. *An assessment of LTE-V2X (PC5) and 802.11p direct communications technologies for improved road safety in the EU*. Technical Report.
- [3] Nicola Baldo, Marco Miozzo, Manuel Requena-Esteso, and Jaume Nin-Guerrero. 2011. An Open Source Product-oriented LTE Network Simulator Based on Ns-3. In *Proceedings of the 14th ACM International Conference on Modeling, Analysis and Simulation of Wireless and Mobile Systems*. ACM, New York, NY, USA, 293–298. <http://doi.acm.org/10.1145/2068897.2068948>
- [4] Vodafone Chair. 2019. A ns3 module for bidirectional coupling with SUMO. (2019). Retrieved May 14, 2020 from <https://github.com/vodafone-chair/ns3-sumo-coupling>
- [5] CSS Labs. 2019. OpenC2X. (2019). Retrieved May 14, 2020 from <https://www.ccs-labs.org/software/openc2x/>
- [6] F. Eckermann, M. Kahlert, and C. Wietfeld. 2019. Performance Analysis of C-V2X Mode 4 Communication Introducing an Open-Source C-V2X Simulator. In *2019 IEEE 90th Vehicular Technology Conference (VTC2019-Fall)*. 1–5.
- [7] ETSI. 2013. *ETSI TS 102 894-1 - V1.1.1 - Facility layer structure, functional requirements and specifications*. Technical Report. European Telecommunications Standards Institute.
- [8] ETSI. 2014. *ETSI EN 302 637-2 - v1.3.1 - Specification of Cooperative Awareness Basic Service*. Technical Report. European Telecommunications Standards Institute.
- [9] ETSI. 2014. *ETSI TS 102 894-2 - V1.2.1 - Applications and facilities layer common data dictionary*. Technical Report. European Telecommunications Standards Institute.
- [10] ETSI. 2019. *ETSI EN 302 637-3 - v1.3.1 - Specifications of Decentralized Environmental Notification Basic Service*. Technical Report. European Telecommunications Standards Institute.
- [11] Alessio Filippi, Kees Moerman, Gerardo Daalderop, Paul D Alexander, Franz Schober, and Werner Pfliegl. 2016. Ready to roll: Why 802.11p beats LTE and 5G for V2x. (2016).
- [12] German Aerospace Center (DLR), Institute of Transportation Systems. 2020. Simulation of Urban MOBility. (2020). Retrieved May 14, 2020 from <https://sumo.dlr.de/>
- [13] M. Klapez, C. A. Grazia, and M. Casoni. 2019. IEEE 802.11p field trials on interference minimization for safety-related V2X applications. In *2019 International Conference on Wireless and Mobile Computing, Networking and Communications (WiMob)*. 235–240.
- [14] Valerian Mannoni, Vincent Berg, Stefania Sesia, and Eric Perraud. 2019. A Comparison of the V2X Communication Systems: ITS-G5 and C-V2X. In *2019 IEEE 89th Vehicular Technology Conference (VTC2019-Spring)*. IEEE, 1–5.
- [15] OpenSim Ltd. 2020. OMNeT++. (2020). Retrieved May 14, 2020 from <https://omnetpp.org/>
- [16] Natale Patriciello, Sandra Lagen, Biljana Bojovic, and Lorenza Giupponi. 2019. An E2E simulator for 5G NR networks. *Simulation Modelling Practice and Theory* 96 (2019), 101933. <https://doi.org/10.1016/j.simpat.2019.101933>
- [17] Raphael Riebl. 2020. Artery, OMNeT++ V2X simulation framework for ETSI ITS-G5. (2020). Retrieved May 14, 2020 from <https://github.com/riehl/artery>
- [18] Cristoph Sommer. 2020. Veins, the open source vehicular network simulation framework. (2020). Retrieved May 14, 2020 from <https://veins.car2x.org/>
- [19] The NS-3 Consortium. 2020. *ns-3 Network Simulator*. Retrieved May 14, 2020 from <https://www.nsnam.org/>
- [20] Antonio Viridis, Giovanni Stea, and Giovanni Nardini. 2016. *Simulating LTE/LTE-Advanced Networks with SimuLTE*. <https://doi.org/10.1007/978-3-319-26470-7>
- [21] Volkswagen. 2018. Volkswagen Group assumes pioneering role in rapid road safety improvement. (Feb 2018). Retrieved May 14, 2020 from [https://www.volkswagenag.com/en/news/2018/02/volkswagen\\_group\\_rapid\\_road\\_safety.html](https://www.volkswagenag.com/en/news/2018/02/volkswagen_group_rapid_road_safety.html)
- [22] Vladimir Vukadinovic, Krzysztof Bakowski, Patrick Marsch, Ian Dexter Garcia, Hua Xu, Michal Sybis, Pawel Sroka, Krzysztof Wesolowski, David Lister, and Ilaria Thibault. 2018. 3GPP C-V2X and IEEE 802.11p for Vehicle-to-Vehicle communications in highway platooning scenarios. *Ad Hoc Networks* 74 (2018), 17–29.
- [23] Lev Walkin. 2019. The ASN.1 to C compiler. (2019). Retrieved May 14, 2020 from <http://lionet.info/asn1c/>
- [24] Xuyu Wang, Shiwen Mao, and Michelle Gong. 2017. *An Overview of 3GPP Cellular Vehicle-to-Everything Standards*. Vol. 21. 19–25. <https://doi.org/10.1145/3161587.3161593>