

Integrated Management Systems diffusion in South European countries

Original

Integrated Management Systems diffusion in South European countries / Cabecinhas, Monica; Domingues, Pedro; Sampaio, Paulo; Bernardo, Mercé; Franceschini, Fiorenzo; Galetto, Maurizio; Gianni, Maria; Gotzamani, Katerina; Mastrogiacomo, Luca; Hernandez Vivanco, Alfonso. - STAMPA. - 1:(2018), pp. 729-749. (2nd International Conference on Quality Engineering and Management, 2016 Guimarães (Portugal), July 13-15, 2016).

Availability:

This version is available at: 11583/2645303 since: 2016-07-19T13:56:31Z

Publisher:

International Conference on Quality Engineering and Management

Published

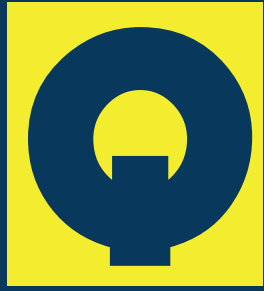
DOI:

Terms of use:

This article is made available under terms and conditions as specified in the corresponding bibliographic description in the repository

Publisher copyright

(Article begins on next page)



ICQEM 16

"A better world with Quality!"

July 13 - 15, 2016
Guimarães, Portugal

Proceedings Book

TECHNICAL RECORD

Title

Proceedings book of the 2nd International Conference on Quality Engineering and Management, 2016

Authors/Editors

Sampaio, Paulo; Domingues, Pedro; Barros, Síría; Carvalho, André; Casadesús, Marti; Costa, Acácio; Fernandes, Ana Cristina; Marimon, Frederic; Melo, Mónica; Oliveira, Rui; Pires, António Ramos; Saraiva, Pedro.

Publisher

International Conference on Quality Engineering and Management

Date

July 2016

Cover Design

Luís Coutinho

ISBN

978-989-20-6814-5

1st Edition

200 units



**2nd International Conference on
Quality Engineering and Management**

July 13-15, 2016

A better world with Quality!

University of Minho, Guimarães, Portugal

This edition is published by the International Conference on Quality Engineering and Management.

Portuguese National Library Cataloguing in Publication Data

Proceedings book of the 2nd International Conference on Quality Engineering and Management edited by
Sampaio, Paulo; Domingues, Pedro; Barros, Síría; Carvalho, André; Casadesús, Marti; Costa, Acácio;
Fernandes, Ana Cristina; Marimon, Frederic; Melo, Mónica; Oliveira, Rui; Pires, António Ramos; Saraiva,
Pedro

ISBN 978-989-20-6814-5

Publisher: International Conference on Quality Engineering and Management

Book in 1 volume, 894 pages

This book contains information obtained from authentic sources.

Reasonable efforts have been made to publish reliable data information, but the authors, as well as the publisher, cannot assume responsibility for the validity of all materials or for the consequences of their use.

Neither this book nor any part may be reproduced or transmitted in any form or by the means, electronic or physical, including photocopying, microfilming, and recording, or by any information storage or retrieval system, without prior permission in writing from the International Conference on Quality Engineering and Management Chair.

All rights reserved.

Trademark Notice: Product or corporate names may be trademarks or registered trademarks, and are used only for identification and explanation, without intent to infringe.

International Conference on Quality Engineering and Management

Paulo Sampaio - Conference Chair

School of Engineering, Systems and Production Department

Campus Gualtar, 4710-057 Braga, Portugal

<http://icqem.dps.uminho.pt/>

icqem@dps.uminho.pt

© 2016 by International Conference on Quality Engineering and Management

ISBN 978-989-20-6814-5

Organizing Committee

Chair

Paulo Sampaio, University of Minho, Portugal

Members

Acácio Costa, University of Minho, Portugal

Ana Cristina Fernandes, University of Minho, Portugal

André Carvalho, University of Minho, Portugal

António Ramos Pires, Portuguese Association for Quality, Portugal

Frederic Marimon, International University of Catalunya, Spain

Marti Casadesús, University of Girona, Spain

Mónica Melo, University of Minho, Portugal

Pedro Domingues, University of Minho, Portugal

Pedro Saraiva, University of Coimbra, Portugal

Rui Oliveira, University of Minho, Portugal

Síria Barros, University of Minho, Portugal

Scientific Committee

Alberto Á. Suárez, University of Oviedo, Spain

Alexandra Simon, Universitat Autònoma de Barcelona, Spain

Ana Cristina Fernandes, University of Minho, Portugal

Ana Fonseca, University Fernando Pessoa, Portugal

António Araújo, Estadual University of Rio de Janeiro, Brazil

António Fernando Branco Costa, Paulista Estadual University, Brazil

António Ramos Pires, Portuguese Association for Quality

Denis Devos, ASQ QMDivision Chair, Canada

Eduardo Salgado, Federal University of Alfenas, Brazil

Elizabeth Cudney, Missouri University of Science and Technology, USA

Estela Vilhena, Polytechnic Institute of Cávado and Ave, Portugal

Evandro Lorentz, Brazilian Society for Quality and Excellence in Management, Brazil

Fiorenzo Franceschini, Politecnico di Torino, Italy

Frederic Marimon, International University of Catalunya, Spain

German Arana, University of the Basque Country, Spain

Glauco Henrique de Sousa Mendes, Federal University of São Carlos, Brazil

Greg Watson, Business Excellence Solutions, Finland

Helena Alvelos, University of Aveiro, Portugal

Henriqueta Nóvoa, University of Porto, Portugal

Inaki Heras, University of the Basque Country, Spain

Isabel Lopes, University of Minho, Portugal

Jacob Kjaer Eskildsen, Aarhus University, TQM&BE Editor, Denmark

José Alvarez Garcia, University of Extremadura, Spain

José António Sarsfield Cabral, University of Porto, Portugal

José Benito Flores, Universidad de Monterrey, Mexico

Jose Francisco Molina, University of Alicante, Spain

Josep Llach, University of Girona, Spain

Juan José Tarí, University of Alicante, Spain

Katerina Gotzamani, University of Macedonia, Greece

Lance B Coleman, Full Moon Consulting, USA

Luís Lourenço, University of Beira Interior, Portugal

Manuel Barraza, Universidad de las Americas, Mexico

Márcio Machado, Paulista University, Brazil

Maria del Rio Rama, University of Vigo, Spain

Maria João Rosa, University of Aveiro, Portugal

Maria Sameiro Carvalho, University of Minho, Portugal

Mariana Carvalho, Polytechnic Institute of Cávado and Ave, Portugal

Marlene Amorim, University of Aveiro, Portugal

Marti Casadesus, University of Girona, Spain

Maurizio Galetto, Politecnico di Torino, Italy

Mercé Bernardo, University of Barcelona, Spain

Muhammad Arsalan Farooq, Massachusetts Institute of Technology (MIT), USA

Muzammil Tanveer, National University of Sciences and Technology, Pakistan

Nicky Campbell-Allen, Massey University, New Zealand

Patrícia Moura e Sá, University of Coimbra, Portugal

Paulo Augusto Cauchick Miguel, Federal University of Santa Catarina, Brazil

Paulo Sampaio, University of Minho, Portugal

Pedro Domingues, University of Minho, Portugal

Pedro Marques, ISQ, Portugal

Pedro Saraiva, University of Coimbra, Portugal

Rajesh Jugulum, Cigna, USA

Roberto Antonio Martins, Federal University of São Carlos, Brazil

Rogério Puga-Leal, New University of Lisbon, Portugal

Sérgio Sousa, University of Minho, Portugal

Ton van der Wiele, Erasmus University Rotterdam, IJQRM Quality Editor, Netherlands

Valério Salomon, São Paulo State University, Brazil

Vanderli Correia Prieto, Federal University of ABC, Brazil

Vidosav Majstorovic, Belgrade University, Serbia

Virgílio Cruz Machado, New University of Lisbon, Portugal.

FOREWORD

Welcome to the 2nd International Conference on Quality Engineering and Management!

After the successful organization of the **1st International Conference on Quality Engineering and Management** in 2014, it is our pleasure to welcome you to the conference **2nd edition** at the University of Minho, again in the historic city of Guimarães, Portugal. This event combines two areas that are not usually brought together: Quality Engineering and Quality Management. We hope that the results of our effort will translate into a successful venture, making gradually of this conference an important scientific event in the field of Quality. As was our aim, since the beginning, the conference covers different topics related to Quality Management and Quality Engineering, including Standards, Continuous Improvement, Supply Chain Quality Management, Management Systems, Six Sigma, Quality Tools, Quality Management in Higher Education, Quality Management in Services and Total Quality Management.

In this 2nd edition the balance between Quality Management papers and Quality Engineering ones is more clear, thus accomplishing one of the fundamental goals of this conference. Approximately 120 papers have been submitted and almost 85 were accepted for presentation, after review from the Conference Scientific Committee. Additionally, some of these papers were selected by the Scientific Committee to be considered for a special issue that will be published by the International Journal of Quality and Reliability Management (SCOPUS indexed journal). Papers accepted correspond to authors from all around the world, with more than 20 countries represented at this level. Therefore, a warm acknowledgment to all speakers and authors is well deserved – Thank You! The success of this second edition derives from their efforts and participation!

We would like to thank all of our four keynote speakers, who will be with us during the two days of the event: **Eric Rebentisch, Jiju Antony, Lars Sorqvist** and **Marco Reis**. We have here the chance to listen to their contributions and new research development insights, coming from some of the most influent current Quality Academicians. Many thanks also to all the excellent work carried out by the Scientific Committee during the papers selection process. We must acknowledge as well the institutional support received from the School of Engineering of the University of Minho, University of Coimbra, University of Girona, International University of Catalunya, Portuguese Association for Quality, Algoritmi Research Centre, Luso-American Foundation, American Society for Quality, Portuguese Institute for Quality, Brazilian Association of Production Engineering, Brazilian Society of Quality and Excellence in Management, Quality for Excellence Consultancy, BQualidade, Target and Cempalavras.

Again, let's take advantage of this great opportunity and make with your contributions an event with Quality, shared and built by such a top level group of participants!

Enjoy your conference! Thank you all!

University of Minho, July 14, 2016.

Paulo Sampaio (Conference Chair)



Conference Co-founders

Paulo Sampaio, University of Minho
António Ramos Pires, Portuguese Association for Quality
Pedro Saraiva, University of Coimbra
Marti Casadesús, University of Girona
Frederic Marimon, International University of Catalunya

PAPERS INDEX

Framework for monitoring process control with finite mixture distribution: Application in company of alimentary sector	1
Vicentin, D.S., Silva, B.B., Piccirillo, I.N., Bueno, F.C. and Oprime, P.C.	
Instrument that evaluates the IMS and sustainable performance	19
Poltronieri, C.F., Gerolamo, M.C., Dias, T.C.M. and Carpinetti, L.C.	
The impact of the lecturer experience on students' satisfaction	32
Beregal-Mirabent, Jasmina., Mas-Machuca, Marta. and Marimon, Frederic	
The prioritization of Attributes - A New Perspective on the RBV	49
Migowski, S.A., Teixeira, R., Libânio, C.S., Migowski, E.R. and Duarte, F.D.	
Combining Quality Tools for Effective Problem Solving	73
Matthew Barsalou	
Design Thinking and QFD: two faces of the same coin?	87
Patrícia Moura e Sá	
Simultaneous integration: a case study of an SME	100
Llonch, M. and Bernardo, M.	
The process of internalization of quality standards	112
Tari, J.J., Pereira-Moliner, J., Molina-Azorín, José F. and López-Gamero, M.D.	
Integration of Social Topics in Quality Management Curricula	124
Simon, A.	
Knowing the element "Integration and Process Management" on Sugarcane Supply Chain	135
Palota, P.H. and Martins, M.F.	
The experience on management systems certification as an enabler for social responsibility external assessment	147
Aguilar Rosado, N., Bernardo, M. and Tari, J.J.	
Reasons of relations between the constructs perceived quality, trust, and loyalty in virtual learning environment	161
Curth, M.	
Service quality study in property and casualty insurance market using the Quality Function Deployment methodology	174
Jordi Escayola Mansilla and Jesús Tricás Preckler	
Employees' Satisfaction and Quality Management in Human Resources: a Study in Spanish Thermal Centre	189
Del Río-Rama, M.C., Álvarez-García, J. and Bredis, K.	
Implementation of a quality model on a software company in Brazil	206
Silva, T.A., Queiroz, F.C.B.P., Queiroz, J.V. and Furukava, M.	
Applying Design of Experiments in Product Development Process	218
Araújo Júnior, L.Q., Queiroz, F.C.B.P., Assis, C.F., Azevedo, W.M., Queiroz, J.V. and Furukava, M.	
Using simulation for balancing a line of power plugs	239
Ramos, A.L., Ferreira, J.V. and Santos, S.T.	
Maturity and integration in management systems. Organizational sustainability	245
Escobar Rivera, D. and Simon Villar, A.	
Assessing Quality Tools Use in the Wind Power Sector	259
Castelló, J., De Castro, R. and Marimon, F.	
Supplier Evaluation Process from the perspective of the Stakeholders	272
Caran V., Krueger J.F., Ayres, L.F. and Araujo Jr. A.	
Relationship between Quality Management Practices and Innovation: The State-of-the-art	280
Bianchi, R.O. and Sampaio, P.	

Is the Biosphere certification increasing customers' satisfaction in hotels?	291
Presas, P., Bernardo, M. and Hernandez-Vivanco, A.	
Analysis of the possible impacts of ISO 9001:2015 version changes in the quality management system of construction companies	308
Santos, J. and Evangelista, A.	
What drives value? A comparative study of value drivers and how they are affected by management systems	317
Raßfeld, C., Fiegler, M., Witczak, M. and Jochem, R.	
The supply chain quality management (SCQM) in middle-income economy countries	334
Lopez Astudillo, A., Cancelado Carretero, H.M., Fajardo Toro, C.H., Balbastre Benavent, F. and Redondo Cano, A.	
Improving Quality of Healthcare through the Selection of Right Technology: An Expert System Approach for a Public Sector Hospital	352
Ayyaz Ahmad and Zahra Badar Munir	
The EFQM model and the integration of management systems as different methodologies to achieve stakeholders' satisfaction	362
Navas, J.L. and Bernardo, M.	
The evolution of intensity certification in ISO 9001 and ISO 14001: a comparative analysis by countries	376
Prestanicola, C., Galetto, M. and Marimon, F.	
Methods used for final inspection in order to obtain the conformity of housing units in the delivery to the client	392
Noronha, M.P.P., Santos, J. and Evangelista, A.C.J.	
Planning the Quality Management Organization – Development of a Roadmapping oriented QFD Approach	404
Behmer, Falk and Jochem, Roland	
Evaluating quality-inspection effectiveness and affordability in short-run productions	420
Franceschini, F., Galetto, M., Genta, G. and Maisano, D.A.	
Self-Assessment Using a Business Excellence Model: an empirical study on Brazilian SMEs	433
Machado, M.C., Mendes, E.F., Telles, R., Sampaio, P. and Santos, C.E.	
The dyad partnership-credibility and the qualification of suppliers	445
Simone Ribeiro Sarges, Marcelo Oliveira, Fernando Romero and Sérgio Sousa	
Monitoring audit quality performance: a contribution based on the analysis of audit reports	458
Ricardo Rocha, Joana Guimarães Sá and Henriqueta Nóvoa	
Total Quality Management and Corporate Social Responsibility. Literature review. The case of Nabeiro Delta Cafés Group	473
Nogueiro, T., Saraiva, M. and Jorge, F.	
Promoting change and easing quality management into higher education institutions	492
Duarte, R., Lacerda-Nobre, A., Ramos-Pires, A., Duarte, J., and Silva-Ribeiro, J.	
Bibliometric analysis about subject “Quality in hotel services”	503
Lima, T.G., Nascimento, D.C. and Shimoda, E.	
Validity of questionnaire items for customer satisfaction evaluation of hotels	514
Lima, T.G., Nascimento, D.C. and Shimoda, E.S.	
Research opportunities in Production Engineering: a diagnosis instrument proposal	531
Neves, S.M., Paiva, E.J., Pinto, J.A., Neves, I.F.M. and D’Elboux, T.V.	

Quality Management Practices and Continuous Improvement in Desiccated Coconut Millers	544
Lalith Nimal Senaweera and Priyantha Saman	
ISO 20000 service management standard: Motivations and key factors to implement	564
Cots, Santi and Casadesús, Martí	
Exploring TLS approaches: A review	576
Dias, R. and Tenera, A.	
Kaizen-Green. An opportunity for sustainable continuous improvement	593
Suárez-Barraza, M.F. and Rodríguez-González, F.G.	
Risks in quality management systems: What does ISO 9001:2015 intend?	604
Boanerges do Amaral Couto, Renato Pedroso Lee, Marcello Guimarães Couto and Marcelo Ferraz	
EQUASS Assurance Certification: The View of Pioneer Adopters	615
Melão, Nuno, Amorim, Marlene, Marimon, Frederic and Alegre, Inés	
Tailor made Excellence - Systemic analysis using sensitivity model	633
Bolboli, S.A. and Reiche, M.	
Measuring Final Inspectors' Discrimination Ability of Metal Structures in the Automotive Industry	653
Alvelos, H., Gonçalves, S. and Xambre, A.R.	
The development of a management technology systems hospital production	665
Azevedo, B.M., Erdmann, R.H., Camara, T.F. and Campos, F.L.S.	
Hospital Disaster Plan: the experience of a Brazilian hospital	678
Racy, F.C.J., Smaletz, D., Mizutani, J.K.S., Santos, T.C.G., Azevedo, B.M. and Campos, F.L.S.	
Reality Shock – Reducing the Risk	687
Campbell-Allen, N.M., Grigg, N.P. and Jayamaha, N.P.	
Implementation of six sigma methodology for the elimination of contamination in Fine Pitch connectors	705
Lopes, J.M., Lopes, I., Roque, J. and Alves, A.L.	
Logistics Business: Kanban Implementation in an Automotive Components Industry	718
Ribeiro R.B., Araujo Jr A.H.F., Barros, J.G.M. and Sabbadini, F.S.	
Integrated Management Systems diffusion in South European countries	729
Cabecinhas, M., Domingues, J.P.T., Sampaio, P., Bernardo, M., Franceschini, F., Galetto, M., Gianni, M., Gotzamani, K., Mastrogiacomo, L. and Hernandez-Vivanco, A.	
Integrating Lean Six Sigma with the new Management System Standards	750
Marques, P.A., Meyrelles, P.M., Saraiva, P.M. and Frazão-Guerreiro, F.J.	
Employeeeship – the missing link between leadership and good results	764
Marita Bergendahl and Lars Sörqvist	
Improving the quality of life through Six Sigma	771
Iorga, D., Ionescu, S. and Scarlat, C.	
Why Should We Hear Our Suppliers?	787
Dagnino, B.V.	
A model proposal for preservation process validation in microbial biobanks	793
Anabela Martins, Nelson Lima and Paulo Sampaio	
Operational Excellence Programs influence on Organizational Culture Change: a conceptual model proposal	819
Carvalho, André M., Sampaio, Paulo and Rebentisch, Eric	
Analyzing the processes at Misurata airport using the service blueprint method	833
Ramadan Abugeddida, Pat Donnellan and Enda Fallon	
ISO 9001 and EFQM Model: a good approach for Higher Education Institutions?	843
Sá, P.S, Sampaio, P. and Rosa, M.J.	

Impact of Physicians on Patients Seeking Hospital Services: Information Asymmetry Combines with Shifts in Perceived Quality	862
Wasim I.M. Sultan and José Crispim	
Reduced time in the undercut beams building process in particular	872
Santos, F.B., Sabaddini, F.S., Barros, J.G.M. and Araújo Junior, A.H.	

Integrated Management Systems diffusion in South European countries

Cabecinhas, M. ²⁾, **Domingues, J. P. T.** ²⁾, **Sampaio, P.** ²⁾, **Bernardo, M.** ¹⁾,
Franceschini, F. ³⁾, **Galetto, M.** ³⁾, **Gianni, M.** ⁴⁾, **Gotzamani, K.** ⁴⁾, **Mastrogiacomo, L.** ³⁾
and Hernandez-Vivanco, A. ¹⁾

¹⁾ Department of Business, Universitat de Barcelona, Barcelona, Spain

²⁾ Department of Production and Systems Engineering, University of Minho, Campus of Gualtar, Braga, Portugal

³⁾ DIGEP (Department of Management and Production Engineering) – Politecnico di Torino, Torino, Italy

⁴⁾ Business Administration Department, University of Macedonia, Thessaloniki, Greece

ABSTRACT

Purpose – This paper dissects the diffusion of Integrated Management Systems (IMs) encompassing the ISO 9001, ISO 14001 and OHSMS 18001 standards in the South European countries.

Design/methodology/approach – Data concerning the evolution of the amount of IMs in Greece, Italy, Portugal and Spain were collected for the time period between 1999 and 2015. The behaviour of the evolution of the number of IMs over the years was studied adopting both the Gompertz and the Logistic models. The results obtained with these two models were compared and analysed in order to provide a forecast for the next years.

Findings – The diffusion throughout the years of the number of IMs follows an S-shaped behaviour. The evolution of the amount of IMs in countries with a lower saturation level are better fitted by the Gompertz model while the Logistic model fits better when considering countries with a larger saturation level.

Research limitations/implications – For some of the analysed countries, the data related to early years are not available. In order to perform the analysis using both the Gompertz and the Logistic models, missing data have been extrapolated from the dataset provided by the annual ISO survey.

Practical implications – The obtained results provide a cross-section of the diffusion of IMs certifications in the South European countries and enable a forecast for the trend in the next years.

Originality/value – This study aims, for the first time as we were able to find out, at the analysis of the diffusion of IMs throughout the years.

Keywords: Certification standards, Integrated Management Systems (IMS), Diffusion model, Logistic model, Gompertz model.

Paper type: Research paper

1. INTRODUCTION

The concerns of the organizations related with new stakeholders have increased over the last few years. Hence, organizations seek to respond to various stakeholders through the adoption and implementation of different certification standards, which leads to the coexistence of several systems and the necessity of their integration, thus establishing a broad research field that has been explored extensively by management scholars.

International Organization for Standardization (ISO) publishes the ISO Survey of Certifications with data concerning to the number of certificates issued according to several management standards each year. However, data related to the number of Integrated Management Systems (IMS) are not available in this or any other relevant publication. Thus, this paper intends to report the first efforts of a work in progress that ultimately focus on the development of a forecasting model that may explain the diffusion of IMS in South European Countries. The present paper aims at answering important questions related to the diffusion of the Integrated Management Systems such as: (i) How has IMS diffusion evolved over time? (ii) How is it expected to evolve later on? So far, several authors have analyzed the individual diffusion of the most widely implemented and well known standards, i.e. the ISO 9001 and ISO 14001. This research enabled the development of forecasting models, highlighted the features that seem to promote a successful diffusion of certificates, outlined the path to sustainable certification and pointed out those countries where a saturation level apparently had been reached. Therefore, the development of similar work focusing IMS would bring some light on unexplored features disclosing the current path and the challenges yet to come. The results reported in this article have some shortcomings, since the simultaneous adoption of the ISO 9001, the ISO 14001 and the OHSMS 18001 standards is considered leaving out any information on the integration level of the respective Management Systems.

Besides this introduction, the remainder of the paper is structured as follows: Sect. 2 reports the analysis of the existing scientific literature about IMSs and the diffusion of certifications according to international standards for Management Systems; Sect. 3 describes the methodology of research adopted in the present work and Sect. 4 shows the obtained results, presents a discussion about the main findings of the research and proposes some elements for the future work.

2. LITERATURE REVIEW

2.1. Integrated Management Systems

Nowadays, the implementation of multiple Management Systems (MSs) is increasing, improving

effectiveness, efficiency and stakeholder assurance. Many organizations are implementing multiple MSs (Bernardo et al., 2011).

The recurring themes of the literature developed so far focusing IMSs are related with the limitations of non IMSs (Almeida et al., 2014; Domingues et al., 2014; Domingues, et al., 2012), identification of critical success factors (Almeida et al., 2014; Oliveira, 2013), guidelines and strategies for integration of MSs (Oliveira, 2013; Rebelo et al., 2014a), design of IMSs (Garengo and Biazzo, 2013; Manzanera et al., 2014; Rebelo et al., 2014b; Zeng et al., 2007), factors that influence the level of integration (Bernardo et al., 2011; Bernardo et al., 2012) and suggested integration levels or degrees (Jørgensen et al., 2006; Jørgensen, 2008; Sampaio et al., 2012), relationships between different MSs (Domingues et al., 2011a; Domingues et al., 2011b; Karanikas, 2014), and difficulties and benefits of implementing IMSs (Bernardo et al., 2015; Sampaio et al., 2012; Simon te al., 2012; Zeng et al., 2011).

More recent studies presented the development of a model to analyze the relationship between integration of MSs and innovation management performance or integration performance (Bernardo, 2014), relationship between adoption of MSs and business performance (Vílchez and Darnall, 2014), lessons learned from abandonment cases (Gianni and Gotzamani, 2015b), the role of the workflow-based electronic document management in an organizational integrated context (Pho and Tambo, 2014), how to design an IMS for building a socially responsible organization that contributes to sustainable development (Mežinska et al., 2015), and the relationships between IMSs and information MSs (Gianni and Gotzamani, 2015a).

2.2. Management systems diffusion

The growth and diffusion process was studied by several authors, focusing the patterns in terms of future trends or distribution functions in many areas, such as Biology, Innovation, Economy, etc (Carrillo and González, 2002; Meade and Islam, 2006).The study of the diffusion phenomenon of MSs is not new. Several authors have already

studied the diffusion of the ISO 9001, ISO 14001, ISO/TS 16949 and SA 8000 standards. Some relevant studies are presented in Table 1.

Table 1 – Selected articles about the diffusion of MSs certification.

Paper	Authors	Standard	Year
<i>A new forecasting model for diffusion of ISO 9000 standard certifications in European countries</i>	Fiorenzo Franceschini, Maurizio Galetto, Giovanni Gianni.	ISO 9001	2004
<i>ISO 9000 and ISO 14000 standards: an international diffusion model</i>	Frederic Marimon Viadiu, Martí Casadesús Fa, Inaki Heras Saizarbitoria.	ISO 9001 ISO 14001	2006
<i>Global Diffusion of ISO 9000 Certification Through Supply Chains</i>	Charles J. Corbett .	ISO 9001	2006
<i>A Spatiotemporal Analysis of the Global Diffusion of ISO 9000 and ISO 14000 Certification</i>	Paulo Albuquerque, Bart J. Bronnenberg, Charles J. Corbett.	ISO 9001 ISO 14001	2007
<i>ISO 14001 diffusion after the success of the ISO 9001 model</i>	Martí Casadesús, Frederic Marimon, Iñaki Heras.	ISO 9001 ISO 14001	2008

<i>The Diffusion of ISO9000 Certification in China: A Trend Analysis Based on Grey Verhulst Model</i>	Yongqing Chen, Erli Liu.	ISO 9001	2009
<i>ISO 9000 and ISO 14000 standards: A projection model for the decline phase</i>	Frederic Marimon, Iñaki Heras, Martí Casadesús.	ISO 9001 ISO 14001	2009
<i>Diffusion of ISO 14001 environmental management systems in China: rethinking on stakeholders' roles</i>	G.Y. Qi, S.X. Zeng, C.M. Tam, H.T. Yin, J.F. Wu, Z.H. Dai.	ISO 14001	2011
<i>ISO 9001 certification forecasting models</i>	Paulo Sampaio, Pedro Saraiva, António Guimarães Rodrigues.	ISO 9001	2011
<i>An institutional perspective on the diffusion of international management system standards: The case of the environmental management standard ISO 14001</i>	M. A. Delmas, M. J. Montes-Sancho.	ISO 14001	2011
<i>ISO/TS 16949: analysis of the diffusion and current trends</i>	F. Franceschini, M. Galetto, D. A. Maisano, L. Mastrogiacomio,	ISO/TS 16949	2011
<i>Diffusion of quality standards in the hospitality sector</i>	María del Mar Alonso- Almeida, Frederic Marimon, Merce Bernardo,	ISO 9001 "Q" Standard	2013
<i>Diffusion of ISO 14001 environmental management system: Global, regional and country-level analyses</i>	W. M. To, P. K. C. Lee.	ISO 14001	2014
<i>ISO 9001 certification in the American Continent: a statistical analysis and modelling</i>	Eduardo Gomes Salgado, Luiz Alberto Beijo, Paulo Sampaio, Carlos Henrique Pereira Mello, Pedro Saraiva.	ISO 9001	2015
<i>Social Accountability 8000 standard certification: analysis of worldwide diffusion</i>	Josep Llach, Frederic Marimon, María del Mar Alonso- Almeida,	SA 8000	2015

Some scholars observed the path of the diffusion certification process and they had described this path with an S-shape, similarly to the behavior of the bio-population growth curve in limited resource habitat or to a diffusion process of technologies (Chen and Liu, 2009; Franceschini et al., 2004).

Different forecasting models have been used in different areas with different degrees of success (Carrillo and González, 2002; Meade and Islam, 1995). More recently, the study of the evolution of the certification process wasn't an exception. It can be observed that several scholars studied the fitting of the logistic curve (Alonso-Almeida et al., 2013; F. Franceschini et al., 2011; Fiorenzo Franceschini et al., 2004; Llach et al., 2015; To & Lee, 2014; Viadiu et al., 2006), which is the most widely used growth curve in the case of management system diffusion.

3. MATERIALS AND METHODS

One of the critical assumptions in the growth curves for forecasting is whether the curve fitted is the correct one. (Martino, 1993) For that, the chosen growth curve must match with growth dynamics of the phenomenon observed. Thus, the behavior of the curve when extrapolated outside the range data will match the future behavior of the phenomenon (Martino, 1993).

There are many models used to fit S-shape behaviors, however, in this case we study only the logistic curve, already applied in the study of certification diffusion by many authors and the Gompertz model, which has been proposed in some studies in the area of biology and innovation showing a good performance when describing the path of the data analyzed (Meade and Islam, 1995; Zwietering et al., 1990). Other forecasting models have been presented in the scientific literature, for example, in studies of Carrillo and González (Carrillo and González, 2002), Meade and Towhidul (Meade and Islam, 1998) and Zwietering, Jongenburger, Rombouts and Riet (Zwietering et al., 1990).

Considering Gompertz and Logistic models, in both cases, the growth curve is divided in three phases:

- Lag phase: certification diffusion beginning, initial difficulties of the implementation;
- Exponential phase: faster growth, the initial difficulties of the implementation are overcome;
- Stationary phase or saturation level: growth slowdown and achieve the maximum value (Buchanan et al., 1997; Franceschini et al., 2004; Martino, 1993).

None of the models applied consider an increasing or decreasing phase after the Stationary phase (Buchanan et al., 1997). Therefore, in both cases, the rate of growth is always positive, increasing until the point of inflection (the point in time where the rate of growth changes from increasing to decreasing) and then decreasing to zero when achieve the Stationary phase (Franses, 1994; Carrillo and González, 2002). It is possible observe the mathematical properties of both curves used in the study of Winsor (Winsor, 1932).

It is important to consider that:

- the model considers only the total number of certified enterprises, paying no attention to their specific dimension and to their commodity sector;
- we suppose there are not events or external interferences that can change the natural evolution of the number of QES (for example, international/national prescriptive changes, strong regulatory/legislation changes).

The Gompertz Curve is a model widely used in the scientific literature and it is described by an S-shape, asymmetric relatively to his inflection point. The value of a gives us the saturation value, the maximum number of certified companies possible to achieve, k is a mathematic parameter of

the model and t_c represents the time at the curve reaches to his inflection point (Mar-Molinero, 1980; Meade and Islam, 1995; Carrillo and González, 2002). The shape of the Gompertz curve is sketched in **Erro! A origem da referência não foi encontrada.** There equation is presented in (1)(Carrillo and González, 2002; Winsor, 1932; Zwietering et al., 1990)

$$y(t) = a \cdot e^{-e^{-k(t-t_c)}} \quad (1)$$

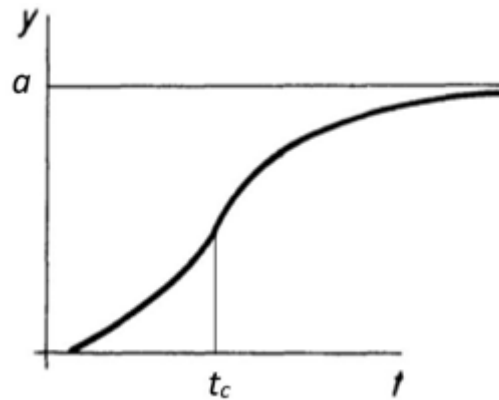


Figure 1 - Typical behavior of a Gompertz curve (Mar-Molinero, 1980)

The Simple Logistic Curve is one of the most used curves in the literature. This model differs from the Gompertz curve because it is symmetric relatively to the point of inflection, this means that happened when half of the saturation level is reached (Carrillo and González, 2002; Franses, 1994; Mar-Molinero, 1980; Meade and Islam, 1995). Like in the Gompertz curve, k is a mathematic parameter of the model and t_c represents the time at reached the inflexion point. The shape of the Logistic curve is observed in the **Erro! A origem da referência não foi encontrada.** There equation is presented in (2) (Carrillo and González, 2002; Winsor, 1932; Zwietering et al., 1990)

$$y(t) = \frac{a}{1 + e^{-k(t-t_c)}} \quad (2)$$

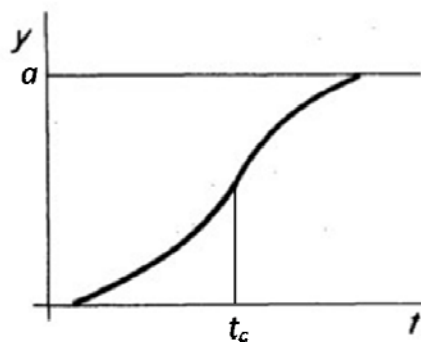


Figure 2 – Typical behavior of a Logistic curve (Mar-Molinero, 1980)

The most effective approach for fitting Gompertz or Logistic curves is the non-linear least squares regression (Seber and Wild, 1989; Martino, 1993; Meade and Islam, 1995; Zwietering et al., 1990). In the present work, we used the “Non-linear curve fits” function of the software Origin® 2016.

The performance of the fit is determined by the information present in the data used for the estimation. In particular, the result is affected by the number of collected observations and by the inclusion of the inflection point in the range of variation of the data (Meade and Islam, 1998).

4. RESULTS: ANALYSIS AND DISCUSSION

For data collection about IMS of Greece, Portugal and Spain, the local certification bodies were contacted in order to provide any information available, since there is lack of IMS information directly accessible, either public or private. In the Italian case, the required data have been obtained by the on-line database of Italian accreditation body ACCREDIA. Table 2 reports the source of the data, years and what they represent. The “number of certificates” represents the valid certificates annually issued in the studied period of time. This means that decertifications are also taken into account and, thus, data are regularly updated. The “number of companies” reflects the number of certified companies (not the number of certified sites, nor the number of certificates). There is a substantial difference between the “number of certificates” and the “number of companies”, in fact a single company may hold more than one certificate. However, in our specific situation, this difference is negligible and does not influence the results of this analysis.

Table 2 - Synthesis of the extend of the collected data, what they represent and their source

<i>Country</i>	<i>Years</i>	<i>Unit</i>	<i>Source</i>
<i>Greece</i>	2013-2015	n.º certificates	Greek Certification bodies
<i>Italy</i>	1999-2014	n.º companies	ACCREDIA
<i>Portugal</i>	2007-2013	n.º certificates	Portuguese Certification bodies
<i>Spain</i>	2008-2014	n.º certificates with standards implemented by Aenor	Aenor

In this study, data refers to IMS simultaneously certified (QES, i.e. Quality, Environment and Safety) according to ISO 9001, ISO 14001 and OSHMS 18001 standards. However, it must be highlighted that the required data for the whole time interval from 1999 to 2015 were not available for some of the analyzed countries. Hence, in order to obtain, at least, an estimate of data from 1999 until 2013 for the considered countries, the missing values for Greece, Portugal and Spain were estimated by extrapolating them from the ISO survey (ISO, 2015). In the Greek case, due to the lack of data, it was extrapolated what happened during the previous seven years (2012 until 2006) in order to had points of the exponential phase and the saturation phase. The next section describes the procedure used for the extrapolation. The initial collected data are not showed.

4.1. Estimation of the missing data in the period from 1999 to 2013 for Portugal

In other to achieve the extension of data pretended, the linear relations were studied between the number of certificates QES and the number of certificates to each standard studied. Analyzing the relations obtained (not showed), it can be observed that a linear relationship can be substantiated between the number of certificates QES and the number of certificates to the standards ISO 14001 (R-squared coefficient = 0,9613) and OHSMS 18001 (R-squared coefficient

= 0,9713). This finding was used along with the ISO survey data on ISO 14001 (no OHSAS certification international data available) to estimate the relationship of the individual certifications with the number of QES.

Observing the percentage of ISO 14001 used in QES presented in the Figure 3, it can be observed that in the years studied, there is an increasing trend between 2007 and 2012, with a last-year decrease. Analyzing the figure 3 it is also possible to verify a moderate linear relation between the % QES/ISO14001 and the year analyzed. The resulting equation (see Fig.3) was used to calculate the % QES / ISO 14001 percentage and obtain QES data since 1999 until 2007.

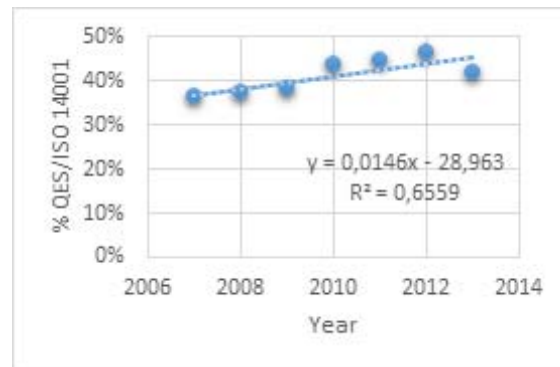


Figure 3 - Evolution of the %QES/ISO14001 from 2007 until 2013 from Portugal

The obtained QES data is presented in the Table 3. The data referring to the year 2008, it was not consider, since it was collected in August, and not in the end of the year, representing a point out of the path presented with the rest of the data collected.

4.2. Estimation of the missing data in the period from 1999 to 2014 for Spain

The starting point for the estimation of QES in Spain is the data provided by AENOR and the number of ISO certified companies (ISO, 2015).

In order to have an estimation of the QES population in Spain, the following parameters were considered for estimating the QES number.

The estimated yearly proportion of ISO 9001 certified companies with an integrated QES based on the AENOR data is calculated by the following equation (3).

$$p_i^*(QMS, QES) = \frac{QES_t}{QMS_t} \quad (3)$$

Consequently, considering the same yearly proportion of QES for the population of companies that have the ISO 9001 certification, the expected number of integrated MSs, when having ISO 9001, is written as follows in (4).

$$E^*(QMS, QES) = ISO9001_t * p_i^*(QMS, QES) \quad (4)$$

By using the same procedure, only now taking ISO14001 as reference, the expected number of integrated companies, when being ISO 14001 certified is calculated by (5):

$$E^*(EMS, QES) = ISO14001_t * p_i^*(EMS, QES) \quad (5)$$

Since both expected values take different references (ISO9001 and ISO14001), the average expected values of QES are used as estimations of the number of companies that have integrated MS at each level.

From years 1999 to 2008 the same proportions of ISO 9001 and ISO 14001 certifications relatively to QES are used, since the last available data provided by AENOR date back to 2008. The acquired data is presented in Table 3.

4.3. Estimation of the missing data in the period from 2006 to 2015 for Greece

In the Greek case, the data collected range only from 2013 to 2015. A data collection process similar to Portugal's was followed.

In this case, it was observed that QES number shows a linear relationship (R-squared coefficient greater than 0.8) with the number of companies certified to the ISO9001 and the OHSMS standards than to the number of companies certified to the ISO 14001 standard.

Due to the lack of less recent IMS (QES) data for Greece, a comparison was made with the evolution of the ISO 9001 certification percentage over the years for the Italian, Greek, Portuguese and Spanish cases. In the Figures 4, 5, 6 and 7 this evolution is presented for Italy, Greece, Portugal and Spain, respectively. These results are based on the data collected and not on extrapolated or estimated data.

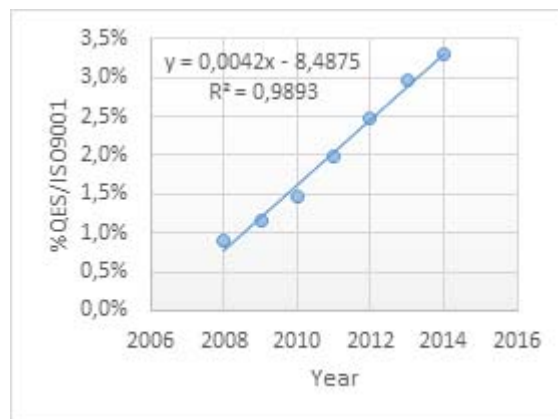


Figure 4 - Evolution of the %QES/ISO9001 from 2008 until 2014 from Italy

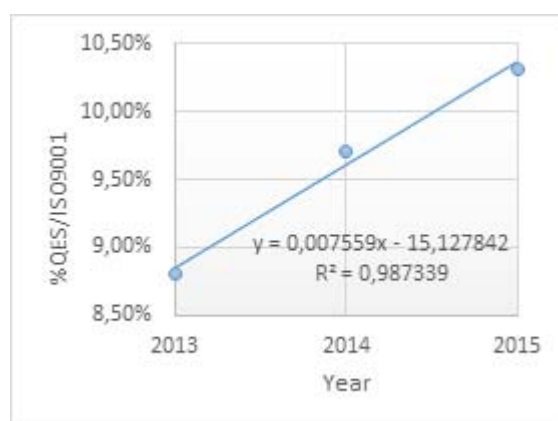


Figure 5 - Evolution of the %QES/ISO9001 from 2013 until 2015 from Greece

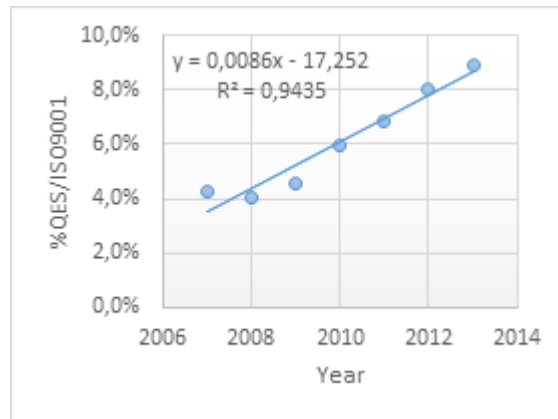


Figure 6 - Evolution of the %QES/ISO9001 from 2007 until 2013 from Portugal

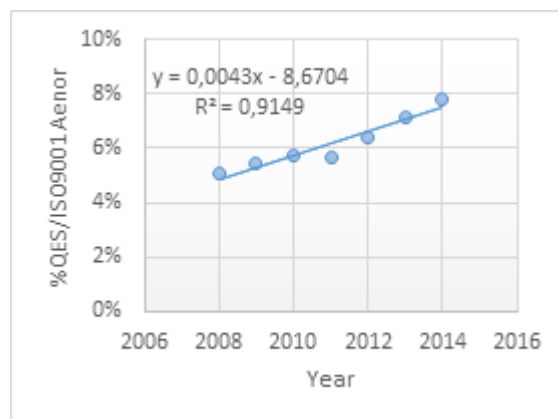


Figure 7 - Evolution of the %QES/ISO9001 from 2008 until 2014 from Spain

Comparing the different cases, it is possible conclude that the evolution of the %QES/ISO9001, in all cases, is crescent over the years, and has similar values, except for the Italian case. So, it was calculated the %QES/ISO9001 based on the data of ISO survey for the years back until 2006. Then, QES data was calculated for the time period ranging from 2006 until 2012. The data obtained is presented in Table 3.

Table 3 - Data used for constructing the forecasting models (note that **bold data** have been estimated)

Ano	Counter	Greece	Italy	Portugal	Spain
1999	1	-	3	7	240
2000	2	-	8	12	472
2001	3	-	32	25	519
2002	4	-	35	40	835
2003	5	-	53	77	968
2004	6	-	67	131	1252
2005	7	-	95	170	1486
2006	8	168	128	199	1825
2007	9	221	181	281	2105
2008	10	341	265	-	2280
2009	11	292	372	347	2198
2010	12	284	528	429	2419

2011	13	305	782	468	2120
2012	14	387	1060	577	2761
2013	15	353	1425	670	2316
2014	16	358	1759	-	2163
2015	17	308	-	-	-

Furthermore, the analysis of the Italian data seems to confirm proximity between the data collected and the estimation results. In fact the % QES/ISO9001 and the % QES/ISO14001 as a regular trend in the years after 2008 (see Figures 8 and 9). In Table 4 it is possible to verify that collected and extrapolated data for Italy are very close to each other.

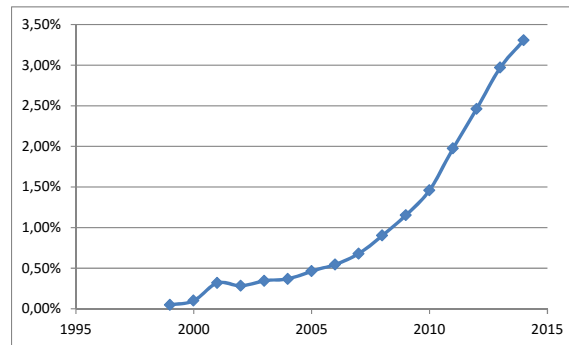


Figure 8 - Evolution of the % QES/ISO9001 from 1999 until 2014 in Italy

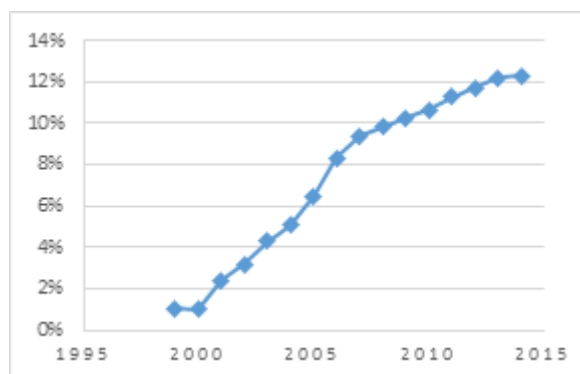


Figure 9 - Evolution of the % QES/ISO14001 from 1999 until 2014 in Italy

Table 4 – Comparison between collected and estimated data about QES certifications in Italy

Year	Collected	Estimated ISO9001	Estimated ISO14001
1999	3	26	1
2000	8	33	3
2001	32	41	6
2002	35	51	11
2003	53	63	15
2004	67	75	24
2005	95	84	35
2006	128	96	49

<i>2007</i>	181	110	143
<i>2008</i>	265	245	243
<i>2009</i>	372	406	381
<i>2010</i>	528	608	563
<i>2011</i>	782	833	789
<i>2012</i>	1060	1088	1050
<i>2013</i>	1425	1416	1397
<i>2014</i>	1759	1795	1766

4.4. Logistic and Gompertz model regression

The models for forecasting and analyzing the actual state of QES have been constructed considering data in Table 3 and using the second column ("Counter") as independent variable.

The parameters of each model applied to different countries are reported in Tables 5 and 6. With this data and the graphics presented in Figures from 10 to 17, it is possible to observe that the studied countries reach different levels of the growth. For example, observing the curves obtained for Greece and Spain, it is possible to conclude that these countries have already achieved the saturation level. Studying the statistic parameters of this two countries both models present a good fitting of data, and the final values of the saturation level respectively obtained with this two models do not present any significant difference. Therefore, it is possible to conclude that, applying this two models to countries that already reach the saturation level, similar results for the value of the saturation level can be obtained. Observing the Residual Sum of Squares it is also possible to conclude that, in the Greek case, the Gompertz curve describe better the growth, and in the Spanish case, the Logistic describes better the current dynamic.

Analyzing the values for Portugal and Italy, we found that both countries are positioned in the exponential phase of the curve, and very dissimilar results are obtained when applying each model. For Italy, it is quite obvious which forecasting model is the best fit based on the currently available data, because the saturation level predicted by the Gompertz curve is unrealistic, this could happen, because the construction of the model consider that the data used do not reached to the inflexion point and it is far from that, in the case of Gompertz. Furthermore, observing the Residual Sum of Squares, it is possible to confirm that the Logistic model performs much better than the Gompertz one. With more data (future data) could be possible to obtain better results.

Looking at the Portuguese data, it seems that Gompertz curve provides better statistic results than the Logistic curve. This is further confirmed by the Residual Sum of Squares. Then, it is concluded that, the Gompertz curve describes better the dynamics of QES growth until now for Portugal.

If comparing Portugal and Italy, the selected models respectively predict that Italy will achieve the saturation model approximately in 2025, while Portugal is still in the growing phase, this was an expected result, since Portugal is having a slower growth if compared to Italy.

Observing the actual results, it seems that Gompertz curve describes better the dynamics the countries with lower saturation level, and the Logistic curve describes better the diffusion of the countries with larger saturation level.

These results will be improved when more information will be added throughout the years, since, as mentioned in the literature review, the performance of the model is determined by the

provided information, i.e. by the number of data and their positioning along the curve shape (Meade and Islam, 1998).

Table 5 - Parameters and statistics for the Gompertz fitting of Greece, Italy, Portugal and Spain

<i>Gompertz</i>				
<i>Country</i>	Greece	Italy	Portugal	Spain
<i>a</i>	338,888	62748,162	1945,016	2524,022
<i>xc</i>	7,529	34,010	15,878	4,401
<i>k</i>	0,730	0,070	0,105	0,302
<i>Degrees of Freedom</i>	7	13	11	13
<i>Residual Sum of Squares</i>	10430,931	7547,328	4605,993	425533,31
<i>R-Square</i>	0,660	0,998	0,993	0,956

Table 6 - Parameters and statistics for the Logistic fitting of Greece, Italy, Portugal and Spain

<i>Logistics</i>				
<i>Country</i>	Greece	Italy	Portugal	Spain
<i>a</i>	336,275	3709,132	996,990	2421,936
<i>xc</i>	8,016	16,213	12,908	5,646
<i>k</i>	0,927	0,413	0,296	0,475
<i>Degrees of Freedom</i>	7	13	11	13
<i>Residual Sum of Squares</i>	10547,777	2866,908	7368,164	339517,019
<i>R-Square</i>	0,656	0,999	0,988	0,965

Gompertz Curve

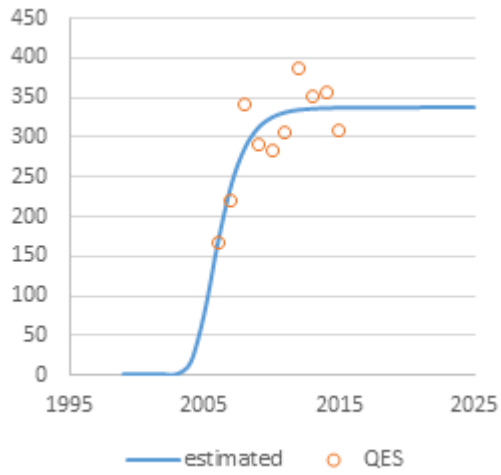


Figure 10 - Gompertz curve (Greece).



Figure 11 - Gompertz curve (Spain).

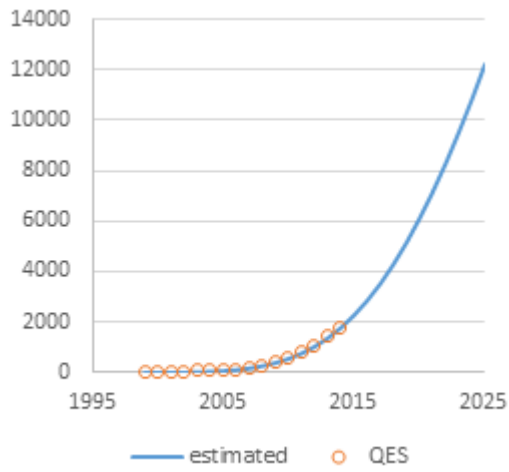


Figure 12 - Gompertz curve (Italy).

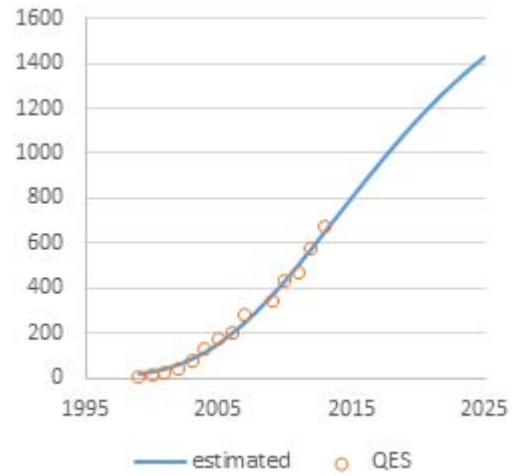


Figure 13 - Gompertz curve (Portugal).

Logistic Curve

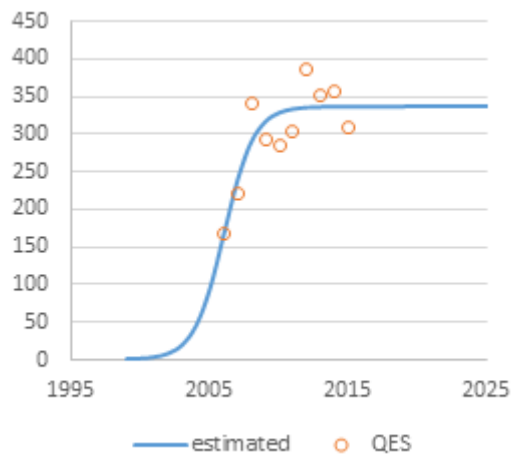


Figure 14 - Logistic curve (Greece).



Figure 15 - Logistic curve (Spain).

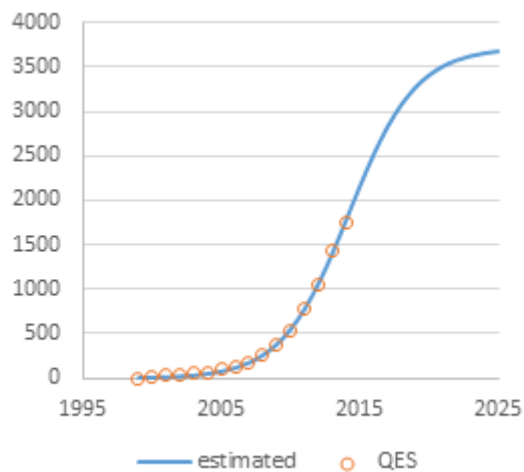


Figure 16 - Logistic curve (Italy).

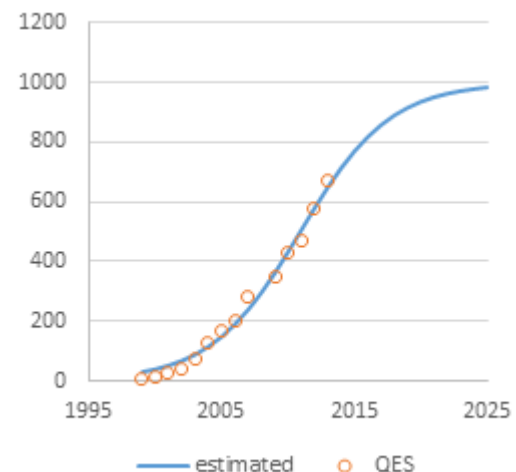


Figure 17 - Logistic curve (Portugal).

5. CONCLUSIONS

Basing on the gathered information, it is possible to conclude that, despite the geographic proximity between the countries that participated in this research (all of them being South European) cross-country results show significant dissimilarities, with regard to QES evolution.

However, there is a similar growing trend in the percentage of ISO9001 used in the QES across the participating countries. In the case of Greece and Spain, this happens, due to their decrease of ISO9001 certification rates in the last years. In the case of Portugal and Italy, the implementation of ISO9001 has increased, and the %QES/ISO9001 has increased, as well, which means that, in the last few years, domestic companies decided to integrate more.

In relation to the considered forecasting models, Gompertz and Logistic, it was found that Greece and Spain have already reached the QES saturation level and the results of both models are similar in respect with the saturation level, yet Gompertz model describes better QES evolution in Greece, whereas Logistic describes better the Spanish case.

When both models are applied to the countries found in the exponential phase, i.e. Portugal and Italy, the results are very different. In order to define which one is the best fit model in this case, more research is needed to study the trends of the countries and the factors that affect the trend of diffusion within these countries, with respect to QES.

In general, it was concluded that a single model does not fit all the paths described for the countries studied, as in the countries that already achieved the saturation level, i.e. Greece and Spain that had all the necessary information for the construction of these models in their data yet leading to different conclusions (Gompertz better for Greece, Logistic better for Spain).

The lack of information relatively to the IMS are the main limitation of the present study. The only country where data extension was available was Italy since IMS data since 1999 until 2013 were provided. Data from Greece only refers to years since 2013 until 2015. In the case of Portugal, it was needed to extrapolate data from 1999 until 2007. In the Spanish case, data for the years since 2008 until 2014 were estimated based on the AENOR and ISO survey data, and it was needed to extrapolate data for the years before. These estimations and extrapolations introduced some uncertainty in the results.

Future research on Integrated Management Systems would further highlight whether the trend of the concurrent implementation of more than one standard is increasing, which will be the impact of the actualization of the standards in the present trends. Another interesting research topic is the impact of the OHSMS 18001 turning into an ISO standard on QES evolution. Furthermore, the study of IMS diffusion across more countries may lead to more robust conclusions, shedding light on possible causes for the different state and dynamics of growth.

REFERENCES

- Albuquerque, P., Bronnenberg, B. J., & Corbett, C. J. (2007). A Spatiotemporal Analysis of the Global Diffusion of ISO 9000 and ISO 14000 Certification. *Management Science*, 53(3), 451–468. <http://doi.org/10.1287/mnsc.1060.0633>
- Almeida, J., Domingues, P., & Sampaio, P. (2014). Different perspectives on management systems integration. *Total Quality Management & Business Excellence*, 25(4), 338–351. <http://doi.org/10.1080/14783363.2013.867098>
- Alonso-Almeida, M. del M., Marimon, F., & Bernardo, M. (2013). Diffusion of quality standards in the hospitality sector. *International Journal of Operations & Production Management*, 33(5), 504–527. <http://doi.org/10.1108/01443571311322706>
- Bernardo, M. (2014). Integration of management systems as an innovation: a proposal for a new model. *Journal of Cleaner Production*, 82, 132–142. <http://doi.org/10.1016/j.jclepro.2014.06.089>
- Bernardo, M., Casadesus, M., & Karapetrovic, S. (2011). Are methods used to integrate standardized management systems a conditioning factor of the level of integration? An empirical study. *International Journal for Quality Research*, 5(3), 213–222.
- Bernardo, M., Casadesus, M., Karapetrovic, S., & Heras, I. (2012). Do integration difficulties

- influence management system integration levels? *Journal of Cleaner Production*, 21, 23–33. <http://doi.org/10.1016/j.jclepro.2011.09.008>
- Bernardo, M., Simon, A., Tari, J. J., & Molina-Azorin, J. F. (2015). Benefits of management systems integration: a literature review. *Journal of Cleaner Production*, 94, 260–267. <http://doi.org/10.1016/j.jclepro.2015.01.075>
- Buchanan, R. ., Whiting, R. ., & Damert, W. . (1997). When is simple good enough: a comparison of the Gompertz, Baranyi, and three-phase linear models for fitting bacterial growth curves. *Food Microbiology*, 14(4), 313–326. <http://doi.org/10.1006/fmic.1997.0125>
- Carrillo, M., & González, J. M. (2002). A new approach to modelling sigmoidal curves. *Technological Forecasting and Social Change*, 69(3), 233–241. [http://doi.org/10.1016/S0040-1625\(01\)00150-0](http://doi.org/10.1016/S0040-1625(01)00150-0)
- Casadesús, M., Marimon, F., & Heras, I. (2008). ISO 14001 diffusion after the success of the ISO 9001 model. *Journal of Cleaner Production*, 16, 1741–1754. <http://doi.org/10.1016/j.jclepro.2007.11.002>
- Chen, Y., & Liu, E. (2009). The Diffusion of ISO9000 Certification in China: A Trend Analysis Based on Grey Verhulst Model. *2009 International Conference on Information Management, Innovation Management and Industrial Engineering*, 223–226. <http://doi.org/10.1109/ICIII.2009.61>
- Corbett, C. J. (2006). Global Diffusion of ISO 9000 Certification Through Supply Chains. *Manufacturing & Service Operations Management*, 8(4), 330–350. <http://doi.org/10.1287/msom.1060.0120>
- Delmas, M. A., & Montes-Sancho, M. J. (2011). An institutional perspective on the diffusion of international management system standards: The case of the environmental management standard ISO 14001. *Business Ethics Quarterly*, 21(1), 103–132.
- Domingues, J. P. T., Sampaio, P., & Arezes, P. M. (2011a). Integrated Management Systems: the vision from the perspective of the Occupational Health and Safety System. In *International Symposium on Occupational Safety and Hygiene*.
- Domingues, J. P. T., Sampaio, P., & Arezes, P. M. (2011b). Management systems integration: should “quality” be redefined? In *55th EOQ Congress*. Budapest, Hungary.
- Domingues, J. P. T., Sampaio, P., & Arezes, P. M. (2014). Analysis of integrated management systems from various perspectives. *Total Quality Management & Business Excellence*, 1–24. <http://doi.org/10.1080/14783363.2014.931064>
- Domingues, P., Sampaio, P., & Arezes, P. M. (2012). New organisational issues and macroergonomics: integrating management systems. *International Journal of Human Factors and Ergonomics*, 1(4), 351–375. <http://doi.org/10.1504/IJHFE.2012.052009>
- Franceschini, F., Galetto, M., & Gianni, G. (2004). A new forecasting model for diffusion of ISO 9000 standard certifications in European countries. *International Journal of Quality & Reability Management*, 21(1), 32–50.
- Franceschini, F., Galetto, M., Maisano, D. A., & Mastrogiacomo, L. (2011). ISO/TS 16949: analysis of the diffusion and current trends. *Proceedings of the Institution of Mechanical Engineers, Part B: Journal of Engineering Manufacture*, 225, 735–745. <http://doi.org/10.1177/2041297510394061>

- Franses, P. H. (1994). Fitting a Gompertz curve. *Journal of the Operational Research Society*.
<http://doi.org/10.1057/jors.1994.11>
- Garengo, P., & Biazzo, S. (2013). From ISO quality standards to an integrated management system: an implementation process in SME. *Total Quality Management & Business Excellence*, 24(3-4), 310–335. <http://doi.org/10.1080/14783363.2012.704282>
- Gianni, M., & Gotzamani, K. (2015a). *Chapter 11 - Integrated Management Systems and Information Management Systems: Common threats*. (P. Papajorgji, F. Pinet, A. M. Guimarães, & J. Papathanasiou, Eds.) *Automated Enterprise Systems for Maximizing Business Performance*. IGI Global. <http://doi.org/10.4018/978-1-4666-8841-4.ch011>
- Gianni, M., & Gotzamani, K. (2015b). Management systems integration: lessons from an abandonment case. *Journal of Cleaner Production*, 86, 265–276. <http://doi.org/10.1016/j.jclepro.2014.08.023>
- Jørgensen, T. H. (2008). Towards more sustainable management systems: through life cycle management and integration. *Journal of Cleaner Production*, 16, 1071–1080. <http://doi.org/10.1016/j.jclepro.2007.06.006>
- Jørgensen, T. H., Remmen, A., & Mellado, M. D. (2006). Integrated management systems – three different levels of integration. *Journal of Cleaner Production*, 14, 713–722. <http://doi.org/10.1016/j.jclepro.2005.04.005>
- Karanikas, N. (2014). Defining the Interrelationship between Safety and Quality Management Systems. *International Journal of Management*, 3(1), 51–60.
- Llach, J., Marimon, F., & Alonso-Almeida, M. del M. (2015). Social Accountability 8000 standard certification: analysis of worldwide diffusion. *Journal of Cleaner Production*, 93, 288–298. <http://doi.org/10.1016/j.jclepro.2015.01.044>
- Manzanera, R., Jardí, J., Gomila, X., Pastor, J. R., Ibáñez, D., Glòria, G., ... Mestres, A. (2014). Design of an integrated management system (IMS) in a government-run medical evaluation organisation. *The TQM Journal*, 26(6), 550–565.
- Marimon, F., Heras, I., & Casadesús, M. (2009). ISO 9000 and ISO 14000 standards: A projection model for the decline phase. *Total Quality Management & Business Excellence*, 20(1), 1–21. <http://doi.org/10.1080/14783360802614257>
- Mar-Molinero, C. (1980). Tractors in Spain: a Logistic Analysis. *Journal of the Operational Research Society*, 31(2), 141–152. <http://doi.org/10.1057/jors.1981.101>
- Martino, J. P. (1993). *Technological forecasting for decision making*. (M. K. Badawy, Ed.) *McGraw-Hill Engineering and Technology Management Series* (Third Edit).
- Meade, N., & Islam, T. (1995). Forecasting with growth curves: An empirical comparison. *International Journal of Forecasting*, 11(2), 199–215. [http://doi.org/10.1016/0169-2070\(94\)00556-R](http://doi.org/10.1016/0169-2070(94)00556-R)
- Meade, N., & Islam, T. (1998). Technological Forecasting–Model Selection, Model Stability, and Combining Models. *Management Science*, 44(8), 1115–1130. <http://doi.org/10.1287/mnsc.44.8.1115>
- Meade, N., & Islam, T. (2006). Modelling and forecasting the diffusion of innovation - A 25-year review. *International Journal of Forecasting*, 22(3), 519–545. <http://doi.org/10.1016/j.ijforecast.2006.01.005>

- Mežinska, I., Lapiņa, I., & Mazais, J. (2015). Integrated management systems towards sustainable and socially responsible organisation. *Total Quality Management & Business Excellence*, 26(5-6), 469–481. <http://doi.org/10.1080/14783363.2013.835899>
- Oliveira, O. J. de. (2013). Guidelines for the integration of certifiable management systems in industrial companies. *Journal of Cleaner Production*, 57, 124–133. <http://doi.org/10.1016/j.jclepro.2013.06.037>
- Pho, H. T., & Tambo, T. (2014). Integrated management systems and workflow-based electronic document management: An empirical study. *Journal of Industrial Engineering and Management*, 7(1), 194–217. <http://doi.org/10.3926/jiem.846>
- Qi, G. Y., Zeng, S. X., Tam, C. M., Yin, H. T., Wu, J. F., & Dai, Z. H. (2011). Diffusion of ISO 14001 environmental management systems in China: rethinking on stakeholders' roles. *Journal of Cleaner Production*, 19, 1250–1256. <http://doi.org/10.1016/j.jclepro.2011.03.006>
- Rebelo, M. F., Santos, G., & Silva, R. (2014a). A Methodology to Develop the Integration of the Environmental Management System with Other Standardized Management Systems. *Computational Water, Energy, and Environmental Engineering*, 3, 170–181. <http://doi.org/10.4236/cweee.2014.34018>.
- Rebelo, M. F., Santos, G., & Silva, R. (2014b). Integration of Individualized Management Systems (MSs) as an Aggregating Factor of Sustainable Value for Organizations: An Overview Through a Review of the Literature. *Journal of Modern Accounting and Auditing*, 10(3), 356–383. Retrieved from <http://www.davidpublishing.com/davidpublishing/Upfile/4/2/2014/2014040270547697.pdf>
- Salgado, E. G., Beijo, L. A., Sampaio, P., Mello, C. H. P., & Saraiva, P. (2015). ISO 9001 certification in the American Continent: a statistical analysis and modelling. *International Journal of Production Research*, 1–18. <http://doi.org/10.1080/00207543.2015.1109719>
- Sampaio, P., Saraiva, P., & Domingues, P. (2012). Management systems: integration or addition? *International Journal of Quality & Reability Management*, 29(4), 402–424.
- Sampaio, P., Saraiva, P., & Rodrigues, A. G. (2011). ISO 9001 certification forecasting models. *International Journal of Quality & Reability Management*, 28(1), 5–26.
- Seber, G. A. F., & Wild, C. J. (1989). *Nonlinear Regression*. New York: Wiley Series in Probability and Mathematical Statistics.
- Simon, A., Karapetrovic, S., & Casadesús, M. (2012). Difficulties and benefits of integrated management systems. *Industrial Management & Data Systems*, 112(5), 828–846.
- To, W. M., & Lee, P. K. C. (2014). Diffusion of ISO 14001 environmental management system: Global, regional and country-level analyses. *Journal of Cleaner Production*, 66, 489–498. <http://doi.org/10.1016/j.jclepro.2013.11.076>
- Viadiu, F. M., Fa, M. C., & Saizarbitoria, I. H. (2006). ISO 9000 and ISO 14000 standards: an international diffusion model. *International Journal of Quality & Reability Management*, 26(2), 141–165.
- Vílchez, V. F., & Darnall, N. (2014). Two Better Than One: The Link Between Management Systems and Business Performance. *Business Strategy and the Environment*.

<http://doi.org/10.1002/bse.1864>

- Winsor, C. P. (1932). The Gompertz Curve as a Growth Curve. *Proceedings of the National Academy of Sciences*, *18*(1), 1–8. <http://doi.org/10.1073/pnas.18.1.1>
- Zeng, S. X., Shi, J. J., & Lou, G. X. (2007). A synergetic model for implementing an integrated management system: an empirical study in China. *Journal of Cleaner Production*, *15*, 1760–1767. <http://doi.org/10.1016/j.jclepro.2006.03.007>
- Zeng, S. X., Xie, X. M., Tam, C. M., & Shen, L. Y. (2011). An empirical examination of benefits from implementing integrated management systems (IMS). *Total Quality Management & Business Excellence*, *22*(2), 173–186. <http://doi.org/10.1080/14783363.2010.530797>
- Zwietering, M. H., Jongenburger, I., Rombouts, F. M., & Vantriet, K. (1990). Modeling of the bacterial growth curve. *Applied and Environmental Microbiology*, *56*(6), 1875–1881. <http://doi.org/10.1111/j.1472-765X.2008.02537.x>